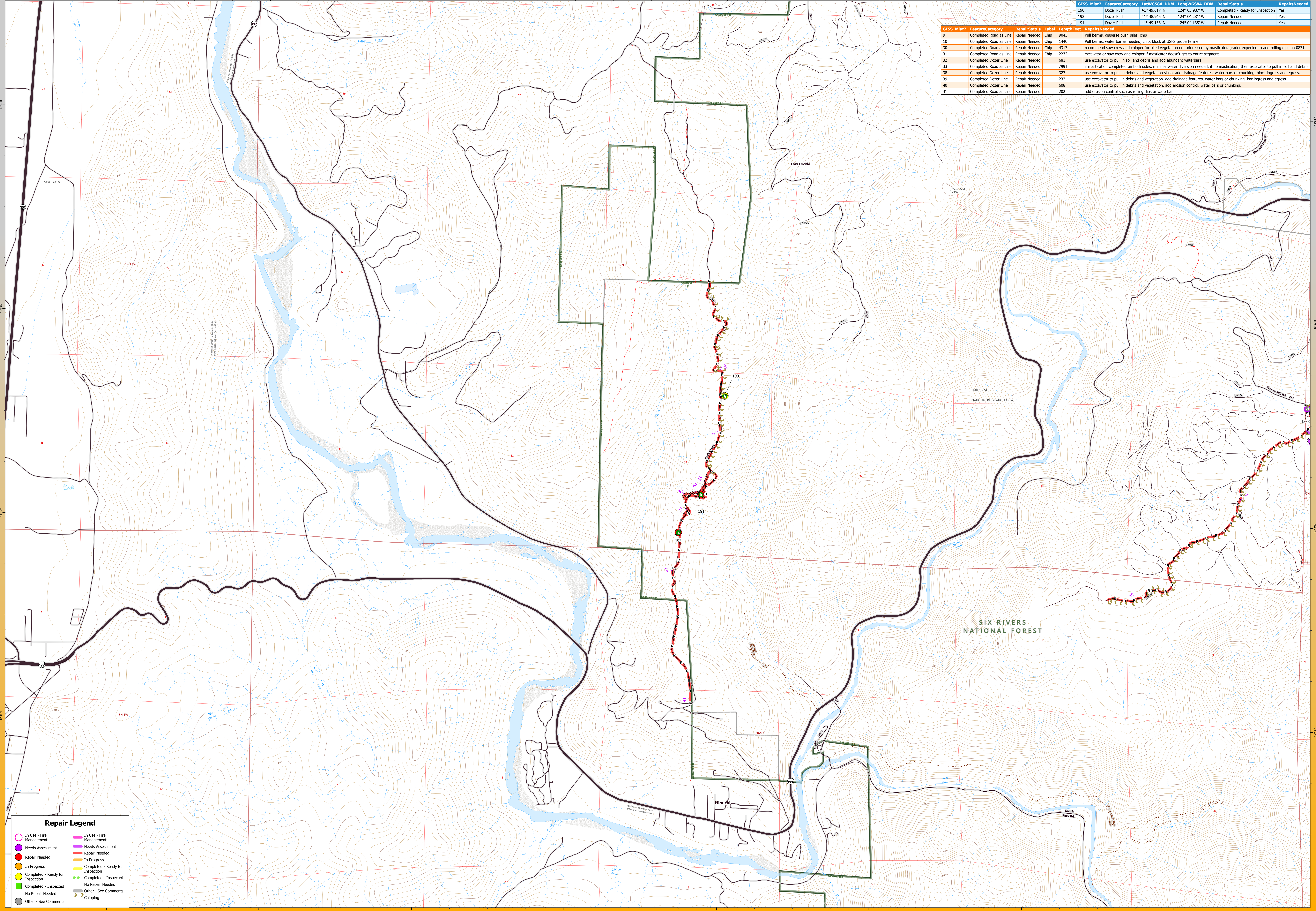


GISS_Misc2	FeatureCategory	RepairStatus	Label	LengthFeet	RepairNotes
190	Completed Road as Line	Repair Needed	Chip	1440	Pull berms, disperse push piles, chip
192	Dozer Push	Completed - Ready for Inspection			
191	Dozer Push	Repair Needed			
19	Completed Road as Line	Repair Needed	Chip	1440	Pull berms, water bar as needed, chip, block at USFS property line
30	Completed Road as Line	Repair Needed	Chip	4313	recommend saw crew and chipper for piled vegetation not addressed by masticator. grader expected to add rolling dips on 0831
31	Completed Road as Line	Repair Needed	Chip	2232	excavator or saw crew and chipper for masticator doesn't get to entire segment
32	Completed Dozer Line	Repair Needed		681	use excavator to pull in soil and debris and add abundant waterbars
33	Completed Road as Line	Repair Needed		7991	if masticator completed on both sides, minimal water diversion needed. if no mastication, then excavator to pull in soil and debris
38	Completed Dozer Line	Repair Needed		327	use excavator to pull in debris and vegetation slash, add drainage features, water bars or chunking, block ingress and egress.
39	Completed Dozer Line	Repair Needed		232	use excavator to pull in debris and vegetation, add drainage features, water bars or chunking, bar ingress and egress.
40	Completed Dozer Line	Repair Needed		608	use excavator to pull in debris and vegetation, add erosion control, water bars or chunking.
41	Completed Road as Line	Repair Needed		202	add erosion control such as rolling dips or waterbars



**Repair Legend**

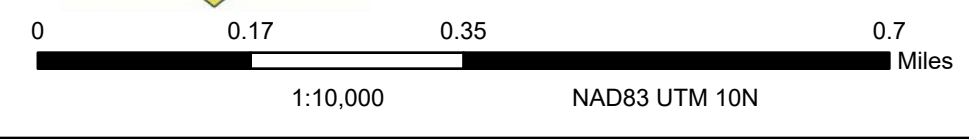
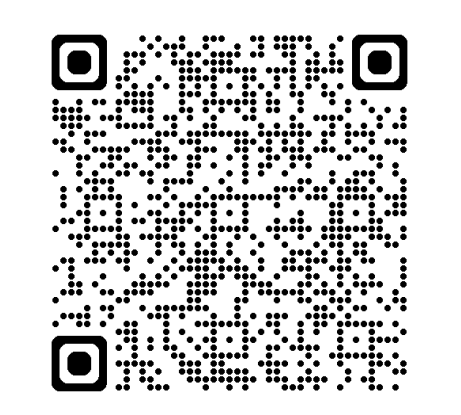
In Use - Fire Management	In Use - Fire Management
Needs Assessment	Needs Assessment
Repair Needed	Repair Needed
In Progress	In Progress
Completed - Ready for Inspection	Completed - Ready for Inspection
Completed - Inspected	Completed - Inspected
No Repair Needed	No Repair Needed
Other - See Comments	Other - See Comments
Chipping	

Gate	Gravel Road	Closed Road
Dozer Push	Primitive Road	Highway
Completed Dozer Line	Closed Roads	Local Connecting Road
Completed Road as Line	Local Road	
Paved Road	4WD	

# SPRING SUPPRESSION REPAIR

## Smith River Complex - Hiouchi Repair Area

94,639 acres as of 11/13/2023  
Map Date 05/03/2024



Smith River Complex  
CA-SRF-000968

# REPAIR