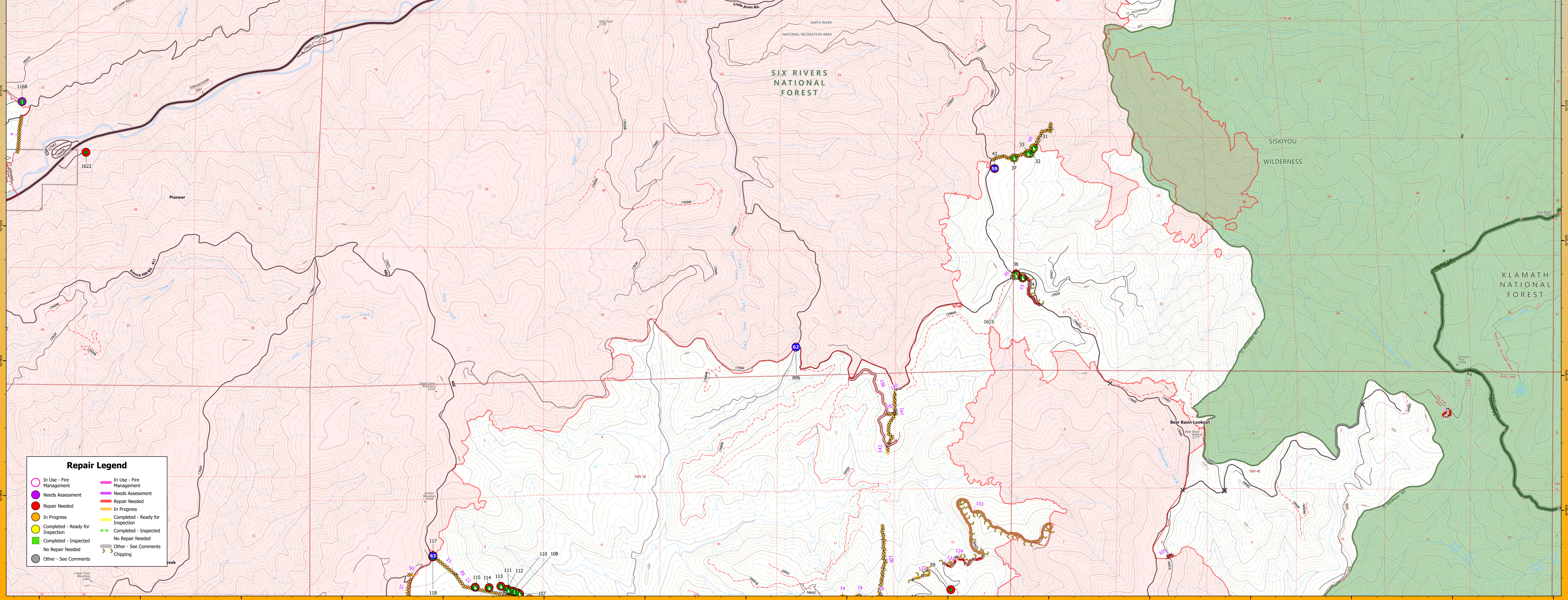


GISS Misc2	FeatureCategory	RepairStatus	Label	LengthFeet	RepairsNeeded
1	Completed Hand Line	Repair Needed	1101		Water bar, Pull back burns. Cover with associated brush. REAF B Code SRF
4	Completed Dozer Line	In Progress	2131		Water bars to forest standard, pull back berms with slash, earthbound barrier at intersection with road. 09/24 READ Gomez/ STRATEGIC LINE, no heaves, 30% cover. REAF_Thes 10/2
164	Planned Secondary Line	In Progress	17654		Critical Repair-Remove debris from road ditch, clear culverts, pull out-slope berms,Chipping
21	Completed Dozer Line	In Progress	1182		FULL REPAIR, 4 blades, pull berms and slash over line, water bar on steep slopes, block ingress/egress.
22	Completed Dozer Line	In Progress	6854		FULL REPAIR, 2-3 blades, pull berms and slash over line, water bar on steep slopes, block ingress/egress. Cleared by Arch Bonskowski/ still need dozer pushes pulled and slashed berms still need pulled along 50% of line as of 10/7 REAF_TONER 10/9
29	Completed Dozer Line	In Progress	636		Water bar, disperse berms and push piles, pull slash across line
34	Completed Dozer Line	In Progress	231		Disperse berms, scatter slash, block ingress
35	Completed Dozer Line	In Progress	339		Pull berms, spread slash REAF Kovasi 4/28/24, Disperse berms, water bar, scatter slash, these sidelines are not strategic line and could use slash pulled over them murphy-deak 10/6
36	Completed Dozer Line	Repair Needed	278		pull berms back over line and recontour, chip and/or scatter slash, block ingress/egress. Williams 9/8
167	Completed Road as Line	Needs Assessment	57		Consult roads engineer to see if should be closed REAF Kovasi 4-27-24 Repair to standard - closed or decommissioned rd?
37	Completed Dozer Line	In Progress	1529		FULL REPAIR, 2 blades, pull berms and slash over line, block ingress/egress. large pushes along green side with heavy fuels. Platt 9/16/23
50	Completed Dozer Line	In Progress	212		FULL REPAIR, Pull berms and slash over line
69	Completed Dozer Line	In Progress	4221		CRITICAL REPAIR, vernal pool soil salvage, close access, seed on the upper dry slope near DP59, potato patch on slopes, pull berms & veg in, recontour (some ridgetops/sideslopes, and drainage). BOTANIST Needed
73	Completed Dozer Line	Repair Needed	1955		pull berms back over line. chip fuel, potato patch on each end to stabilize and prevent div access. William's 9/8. ARCH Platt 9/9/23.
74	Completed Road as Line	In Progress	16103		Road will need to be monitored for fire. suppression vehicle use degradation. Intermittently apply water to reduce siltng. Placed in repair status "in progress"until fully assess.
85	Completed Dozer Line	In Progress	91		
105	Completed Dozer Line	Repair Needed	234		Pullback berms scatter vegetation. REAF BCode SRF. Arch Bonskowski 10/4
122	Completed Road as Line	In Progress	1314		chip cut vegetation
123	Completed Road as Line	Repair Needed	481		chip cut vegetation
124	Completed Road as Line	Repair Needed	2241		chip cut vegetation
128	Completed Dozer Line	In Progress	3577		
140	Completed Hand Line	In Progress	316		lop and scatter slash along line. REAF_TONER 10/12
141	Completed Dozer Line	In Progress	2536		Pull in berms, spread veg, water bar. Arch Bonskowski 10/4
142	Completed Dozer Line	In Progress	499		Pull in berms, spread veg, water bar. Arch Bonskowski 10/4
143	Completed Dozer Line	In Progress	435		Water bars on steep slopes, potato patch low gradient slopes, pull berms onto line, spread slash to obtain 75% coverage REAF_TONER 10/7
153	Repair Line	Repair Needed	9100		
191	Completed Road as Line	Repair Needed	7083		4/29 rd too wet to drive 4/29. Berms pulled, water bars installed, dozer pushes smoother out.
156	Access or Improved Road	Repair Needed	5696		pull berms, out slope road, install water bars, spread slash, block edge of road SJ 4/19
192	Completed Hand Line	Needs Assessment	1376		
193	Completed Hand Line	Needs Assessment	2087		
194	Completed Hand Line	Needs Assessment	279		
195	Completed Hand Line	Needs Assessment	2036		
196	Completed Dozer Line	Repair Needed	1322		Type 3 excavator to improve water bars and pull slash across line. THIS IS NOT A STRATEGIC LINE. More waterbars in steep sections. Clear outlets of existing water bars. Pull berms REAF Kovasi 4-28-24

GISS Misc2	FeatureCategory	LatWGS84_DDM	LongWGS84_DDM	RepairStatus	RepairsNeeded
786	Drop Point	41° 53.966' N	123° 46.210' W	Needs Assessment	
596	Drop Point	41° 49.161' N	123° 48.529' W	Needs Assessment	Spot check needed by roads/hydro to assess if repair needed. Minor soil displacement from dozer tracks but no major damage.
43	Drop Point	41° 50.498' N	123° 46.576' W	Repair Needed	pull berms back, install barriers around edge of parking area. Spread seed and mulch around edges. SJ 4/19
118	Dozer Push	41° 47.580' N	123° 52.108' W	Repair Needed	LIGHT REPAIR, block ingress/egress. pull in berms and slash to recontour.
117	Drop Point	41° 47.588' N	123° 52.105' W	Repair Needed	pull in and recontour berms and slash.
36	Dozer Push	41° 49.718' N	123° 46.353' W	Repair Needed	decompact bladed area, pull berms back over area and slash. block ingress. Williams 9/8
114	Dozer Push	41° 47.256' N	123° 51.546' W	Repair Needed	150'x75' dozer push: pull berms and slash. cleared by ARCH Bonskowski. REAF Jackson 9/20
37	Dozer Push	41° 50.376' N	123° 46.384' W	In Progress	FS CRITICAL REPAIR, recontour line to restore grade, salvage sod and replant in line. hand crew with excavator recommended Williams/Madera/Platte 9/7
32	Dozer Push	41° 50.613' N	123° 46.226' W	In Progress	pull berms and slash back over line. recontour. William's 9/7
31	Dozer Push	41° 50.653' N	123° 46.190' W	In Progress	Pull berms and slash back, decompact, roughen surface, and seed. Williams/Madera/Platt 9/7
33	Dozer Push	41° 50.612' N	123° 46.245' W	In Progress	FS CRITICAL REPAIR, recontour drainage across line. Williams 9/7
65	Repair Point	41° 53.362' N	123° 47.914' W	Repair Needed	haul logs out, remove brush and chip pile
34	Dozer Push	41° 49.690' N	123° 46.287' W	Repair Needed	pull berms in and recontour dirt piles. roughen surface (light potato patch for water run off)
72	Repair Point	41° 52.728' N	123° 49.298' W	Repair Needed	chip small material. haul or back up large material
115	Dozer Push	41° 47.358' N	123° 51.684' W	Repair Needed	pull in berms and slash. cleared by ARCH Bonskowski. REAF Jackson 9/20
59	Repair Point	41° 47.373' N	123° 46.972' W	Repair Needed	re-install road block REAF_TONER 10/8
99	Repair Point	41° 52.550' N	123° 50.565' W	Repair Needed	Chipping and log bucking needed. 10/2 REAF This
906	Repair Point	41° 52.496' N	123° 49.120' W	Needs Assessment	Monitor for effectiveness, shore up if needed
1168	Resource Location	41° 50.923' N	123° 56.226' W	Needs Assessment	Arch?
113	Dozer Push	41° 47.267' N	123° 51.430' W	Repair Needed	spread soil and slash pushed by dozer REAF_TONER 10/7
112	Dozer Push	41° 47.345' N	123° 51.367' W	Repair Needed	spread soil and slash pushed by dozer REAF_TONER 10/7
111	Dozer Push	41° 47.336' N	123° 51.355' W	Repair Needed	spread soil and slash pushed by dozer REAF_TONER 10/7
110	Dozer Push	41° 47.332' N	123° 51.315' W	Repair Needed	spread soil and slash pushed by dozer REAF_TONER 10/7
109	Dozer Push	41° 47.326' N	123° 51.293' W	Repair Needed	spread soil and slash pushed by dozer REAF_TONER 10/7
108	Dozer Push	41° 47.318' N	123° 51.262' W	Repair Needed	spread soil and slash pushed by dozer REAF_TONER 10/7
107	Dozer Push	41° 47.311' N	123° 51.244' W	Repair Needed	spread soil and slash pushed by dozer REAF_TONER 10/7
1615	Dozer Push	41° 49.707' N	123° 46.355' W	Repair Needed	Pull back berms 4-27-24 REAF Kovasi
1622	Repair Point	41° 50.552' N	123° 55.586' W	Repair Needed	Use hand crew to remove bucked logs and cut brush from creek.



	In Use - Fire Management		Repair Needed
	Needs Assessment		In Progress
	Completed - Ready for Inspection		Completed - Ready for Inspection
	Completed - Inspected		Completed - Inspected
	No Repair Needed		No Repair Needed
	Other - See Comments		Other - See Comments
	Chipping		Chipping

	Drop Point		Planned Secondary Line		Local Road
	Resource Location		Access or Improved Road		4WD
	Repair Point		Repair Line		Closed Road
	Dozer Push		Paved Road		Highway
	Completed Dozer Line		Gravel Road		Smith River Cx Wildfire Perimeter
	Completed Hand Line		Primitive Road		Federal Wilderness Boundary
	Completed Road as Line		Closed Roads		

SPRING SUPPRESSION REPAIR

Smith River Complex - Jawbone Repair Area

94,639 acres as of 11/13/2023
Map Date 05/03/2024

Smith River Complex
CA-SRF-000968
REPAIR