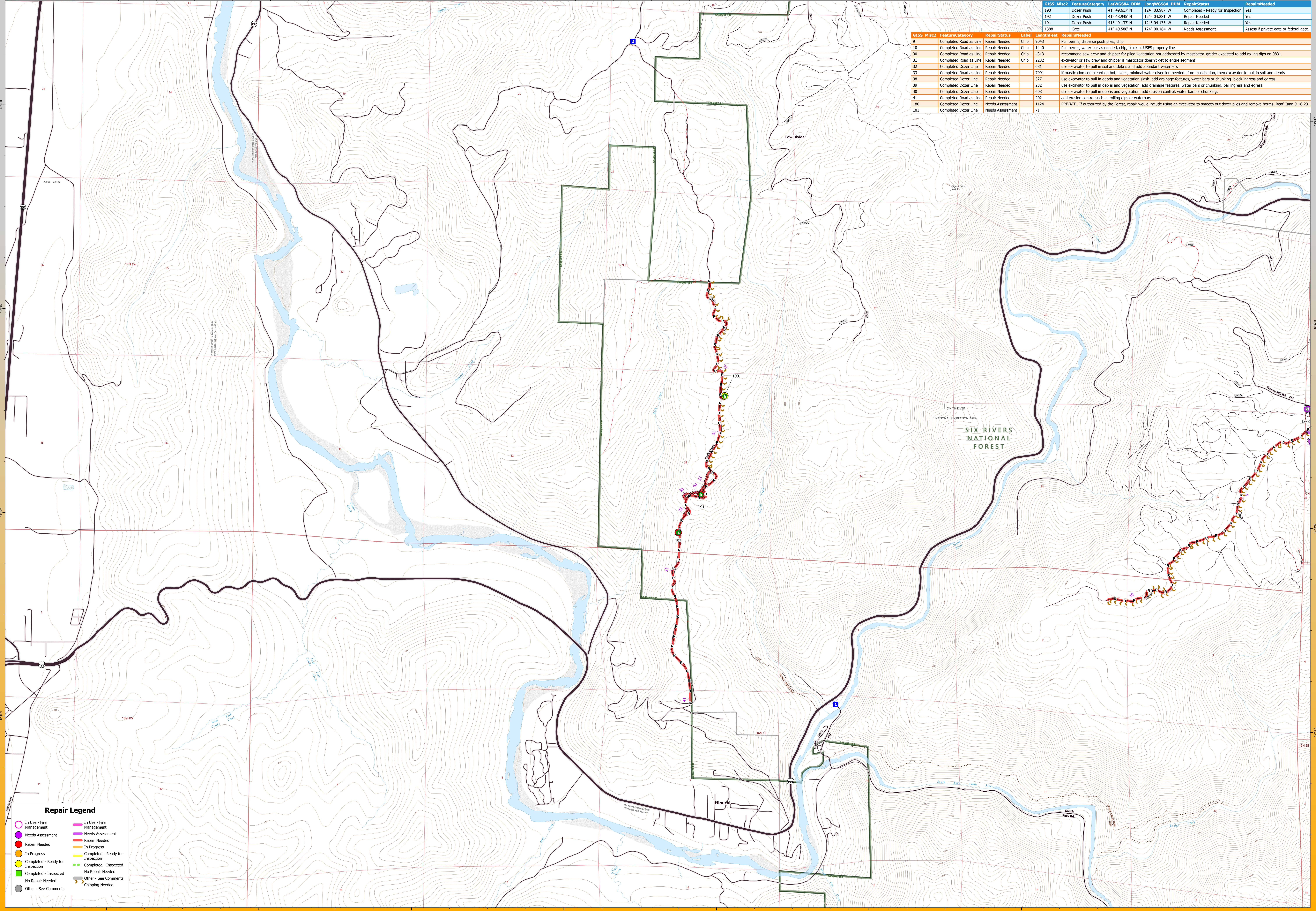


GISS_Misc2	FeatureCategory	RepairStatus	Label	Length/Feet	Repair/Notes
190	Dozer Push	Completed - Ready for Inspection			Yes
192	Dozer Push	Repair Needed			Yes
191	Dozer Push	Repair Needed			Yes
1388	Gate	Needs Assessment			Assess if private gate or federal gate.
9	Completed Road as Line	Repair Needed	Chip 9943		Pull berms, disperse push piles, chip
10	Completed Road as Line	Repair Needed	Chip 1440		Pull berms, water bar as needed, chip, block at USFS property line
30	Completed Road as Line	Repair Needed	Chip 4313		recommend saw crew and chipper for piled vegetation not addressed by masticator. grader expected to add rolling dips on 0831
31	Completed Road as Line	Repair Needed	Chip 2232		excavator or saw crew and chipper if masticator doesn't get to entire segment
32	Completed Dozer Line	Repair Needed	661		use excavator to pull in soil and debris and add abundant waterbars
33	Completed Road as Line	Repair Needed	7991		if masticator completed on both sides, minimal water diversion needed. if no masticator, then excavator to pull in soil and debris
38	Completed Dozer Line	Repair Needed	327		use excavator to pull in debris and vegetation slash, add drainage features, water bars or chinking, block ingress and egress.
39	Completed Dozer Line	Repair Needed	232		use excavator to pull in debris and vegetation, add drainage features, water bars or chinking, bar ingress and egress.
40	Completed Dozer Line	Repair Needed	608		use excavator to pull in debris and vegetation, add erosion control, water bars or chinking.
41	Completed Road as Line	Repair Needed	202		add erosion control such as rolling dips or waterbars
180	Completed Dozer Line	Needs Assessment	1124		PRIVATE. If authorized by the Forest, repair would include using an excavator to smooth out dozer piles and remove berms. Reaf Cann 9-16-23.
181	Completed Dozer Line	Needs Assessment	71		

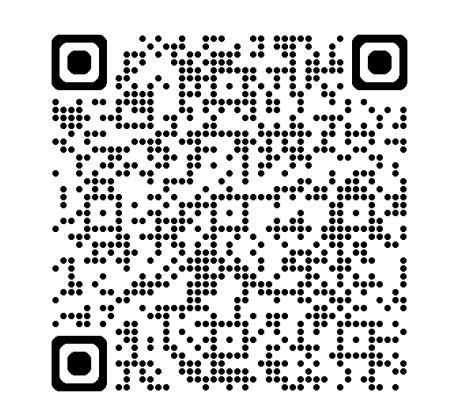
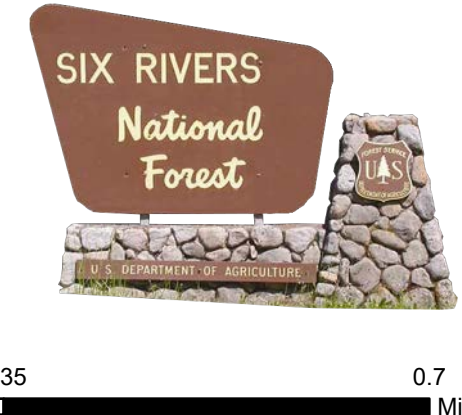


Repair Legend

In Use - Fire Management	In Use - Fire Management
Needs Assessment	Needs Assessment
Repair Needed	Repair Needed
In Progress	In Progress
Completed - Ready for Inspection	Completed - Ready for Inspection
Completed - Inspected	Completed - Inspected
No Repair Needed	No Repair Needed
Other - See Comments	Other - See Comments
Chipping Needed	

Drop Point	Paved Road	4WD
Gate	Gravel Road	Closed Road
Dozer Push	Primitive Road	Highway
Completed Dozer Line	Closed Roads	Local Connecting Road
Completed Road as Line	Local Road	

SPRING SUPPRESSION REPAIR
 Smith River Complex - Hiouchi Repair Area
 94,639 acres as of 11/13/2023
 Map Date 05/10/2024



Smith River Complex
 CA-SRF-000968
REPAIR

