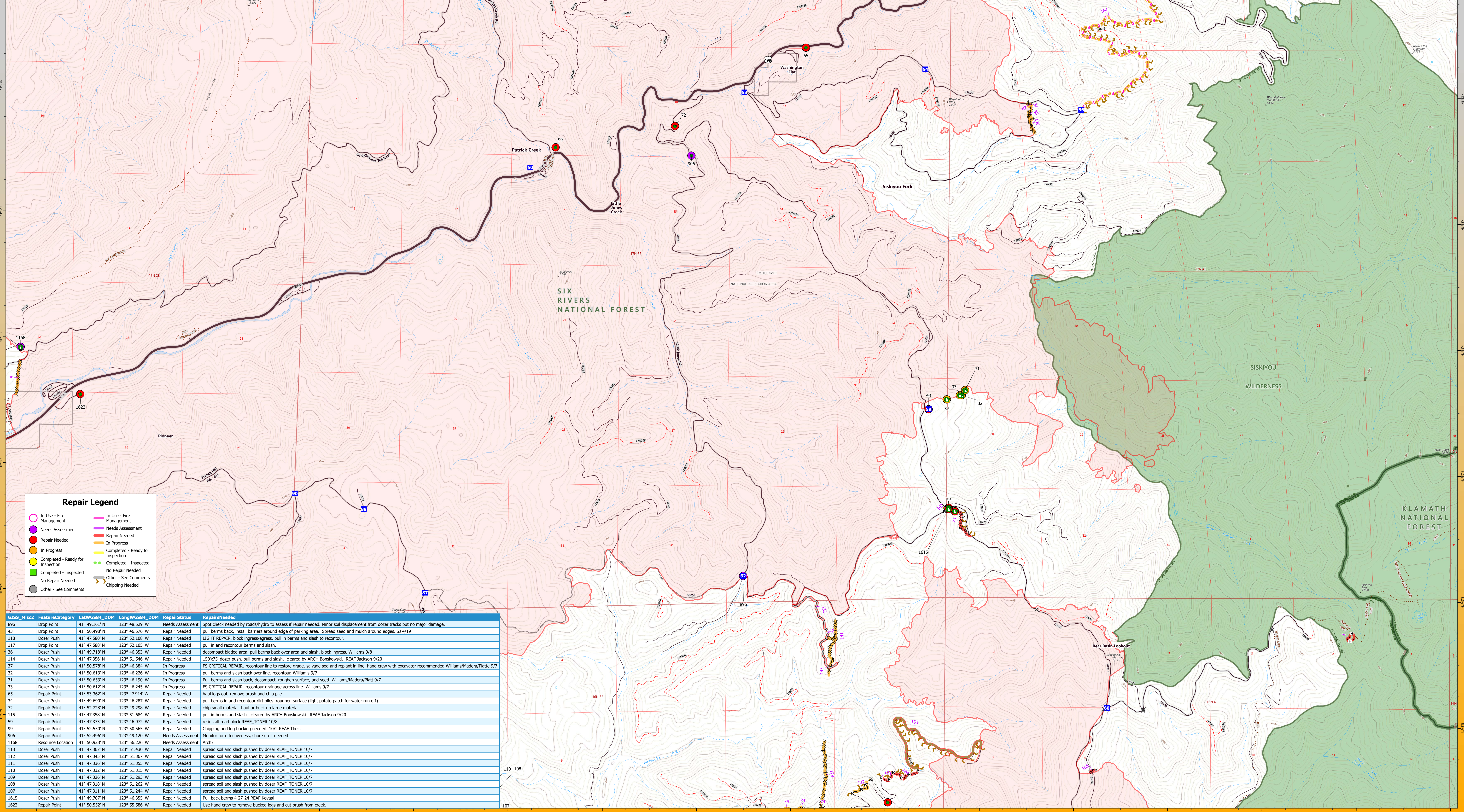


GISS_Misc2	FeatureCategory	RepairStatus	Label	Length/Foot	RepairsNeeded
1	Completed Hand Line	Repair Needed	1101		Water bar. Pull back burns. Cover with associated brush. REAF B Code SRF
4	Completed Dozer Line	In Progress	2131		Water bars to forest standard, pull back berms with slash, earthbound barrier at intersection with road. 09/24 READ Gomez// STRATEGIC LINE, no heaves, 30% cover. REAF_Thes 10/2
164	Planned Secondary Line	In Progress	17654		Critical Repair - Remove debris from road ditch, pull out-slope berms
21	Completed Dozer Line	In Progress	1182		FULL REPAIR, 4 blades, pull berms and slash over line, water bar on steep slopes, block ingress/egress.
22	Completed Dozer Line	In Progress	6854		FULL REPAIR, 2-3 blades, pull berms and slash over line, water bar on steep slopes, block ingress/egress. Cleared by Arch Bonskowski// still need dozer pushes pulled and slashed berms still need pulled along 50% of line as of 10/7 REAF_TONER 10/9
29	Completed Dozer Line	In Progress	636		hand crew to pull back soil berms and spread slash piles REAF Burton 5/6
34	Completed Dozer Line	In Progress	231		Disperse berms, scatter slash, block ingress
35	Completed Dozer Line	In Progress	339		Pull berms, spread slash REAF Kovasi 4/28/24. Disperse berms, water bar, scatter slash. these sidelines are not strategic line and could use slash pulled over them murphy-deak 10/6
36	Completed Dozer Line	Repair Needed	278		pull berms back over line and recourtour, chip and/or scatter slash, block ingress/egress. Williams 9/8
167	Completed Road as Line	Needs Assessment	57		Consult roads engineer to see if should be closed REAF Kovasi 4-27-24 Repair to standard - closed or decommissioned r7
37	Completed Dozer Line	In Progress	1529		FULL REPAIR, 2 blades, pull berms and slash over line, block ingress/egress. large pushes along green side with heavy fuels. Platt 9/16/23
50	Completed Dozer Line	In Progress	212		FULL REPAIR, Pull berms and slash over line
73	Completed Dozer Line	Repair Needed	1955		pull berms back over line, chip fuel, potato patch on each end to stabilize and prevent chv access. William's 9/8. ARCH Platt 9/9/23.
74	Completed Road as Line	In Progress	16103		Road will need to be monitored for fire. suppression vehicle use degradation. Intermittently apply water to reduce siltng. Placed in repair status "in progress"until fully assess.
85	Completed Dozer Line	In Progress	91		
105	Completed Dozer Line	Repair Needed	234		Pullback berms scatter vegetation. REAF BCode SRF. Arch Bonskowski 10/4
122	Completed Road as Line	In Progress	1314		chip cut vegetation
123	Completed Road as Line	Repair Needed	481		chip cut vegetation
124	Completed Road as Line	Repair Needed	2241		chip cut vegetation
128	Completed Dozer Line	In Progress	3577		
141	Completed Dozer Line	In Progress	2536		Pull in berms, spread veg, water bar. Arch Bonskowski 10/4
142	Completed Dozer Line	In Progress	489		Pull in berms, spread veg, water bar. Arch Bonskowski 10/4
143	Completed Dozer Line	In Progress	435		Water bars on steep slopes, potato patch low gradient slopes, pull berms onto line, spread slash to obtain 75% coverage REAF_TONER 10/7
153	Repair Line	Repair Needed	9100		
156	Access or Improved Road	Repair Needed	5696		pull berms, cut slope road, install water bars, spread slash, block edge of road S3 4/19
196	Completed Dozer Line	In Progress	1322		Hand crew to improve water bars, pull back soil berms, and spread slash across line. THIS IS NOT A STRATEGIC LINE. More waterbars in steep sections. Clear outlets of existing water bars. REAF Kovasi 4-28-24



Repair Legend

- In Use - Fire Management (Pink circle)
- Needs Assessment (Purple circle)
- Repair Needed (Red circle)
- In Progress (Yellow circle)
- Completed - Ready for Inspection (Green circle)
- Completed - Inspected (Light Green circle)
- No Repair Needed (Grey circle)
- Other - See Comments (Grey circle)
- In Use - Fire Management (Pink line)
- Needs Assessment (Purple line)
- Repair Needed (Red line)
- In Progress (Yellow line)
- Completed - Ready for Inspection (Green line)
- Completed - Inspected (Light Green line)
- No Repair Needed (Grey line)
- Other - See Comments (Grey line)
- Chipping Needed (Grey line)

GISS_Misc2	FeatureCategory	LatWGS84_DDM	LongWGS84_DDM	RepairStatus	RepairsNeeded
896	Drop Point	41° 49.161' N	123° 48.529' W	Needs Assessment	Spot check needed by roads/hydro to assess if repair needed. Minor soil displacement from dozer tracks but no major damage.
43	Drop Point	41° 50.498' N	123° 46.276' W	Repair Needed	pull berms back, install barriers around edge of parking area. Spread seed and mulch around edges. S3 4/19
118	Dozer Push	41° 47.580' N	123° 52.108' W	Repair Needed	LIGHT REPAIR, block ingress/egress. pull in berms and slash to recourtour.
117	Drop Point	41° 47.588' N	123° 52.105' W	Repair Needed	pull in and recourtour berms and slash.
36	Dozer Push	41° 49.718' N	123° 46.353' W	Repair Needed	decompact bladed area, pull berms back over area and slash. block ingress. Williams 9/8
114	Dozer Push	41° 47.356' N	123° 51.546' W	Repair Needed	150x75' dozer push. pull berms and slash. cleared by ARCH Bonskowski. REAF Jackson 9/20
37	Dozer Push	41° 50.578' N	123° 46.384' W	In Progress	FS CRITICAL REPAIR. recourtour line to restore grade, salvage soil and replant in line. hand crew with excavator recommended Williams/Madera/Platte 9/7
32	Dozer Push	41° 50.515' N	123° 46.225' W	In Progress	pull in berms and slash back over line. recourtour. Williams 9/7
31	Dozer Push	41° 50.653' N	123° 46.190' W	In Progress	Pull berms and slash back, decompact, roughen surface, and seed. Williams/Madera/Platte 9/7
33	Dozer Push	41° 50.612' N	123° 46.245' W	In Progress	FS CRITICAL REPAIR. recourtour drainage across line. Williams 9/7
65	Repair Point	41° 53.362' N	123° 47.914' W	Repair Needed	haul logs out, remove brush and chip pile
34	Dozer Push	41° 49.690' N	123° 46.287' W	Repair Needed	pull berms in and recourtour dirt piles. roughen surface (light potato patch for water run off)
72	Repair Point	41° 52.728' N	123° 49.298' W	Repair Needed	chip small material. haul or buck up large material
115	Dozer Push	41° 47.358' N	123° 51.684' W	Repair Needed	pull in berms and slash. cleared by ARCH Bonskowski. REAF Jackson 9/20
59	Repair Point	41° 47.373' N	123° 46.972' W	Repair Needed	re-install road block REAF_TONER 10/8
99	Repair Point	41° 52.550' N	123° 50.565' W	Repair Needed	Chipping and log bucking needed. 10/2 REAF Thes
906	Repair Point	41° 52.496' N	123° 49.120' W	Needs Assessment	Monitor for effectiveness, shore up if needed
1168	Resource Location	41° 50.923' N	123° 56.226' W	Needs Assessment	Arch?
113	Dozer Push	41° 47.367' N	123° 51.430' W	Repair Needed	spread soil and slash pushed by dozer REAF_TONER 10/7
112	Dozer Push	41° 47.345' N	123° 51.367' W	Repair Needed	spread soil and slash pushed by dozer REAF_TONER 10/7
111	Dozer Push	41° 47.336' N	123° 51.355' W	Repair Needed	spread soil and slash pushed by dozer REAF_TONER 10/7
110	Dozer Push	41° 47.332' N	123° 51.315' W	Repair Needed	spread soil and slash pushed by dozer REAF_TONER 10/7
109	Dozer Push	41° 47.326' N	123° 51.293' W	Repair Needed	spread soil and slash pushed by dozer REAF_TONER 10/7
108	Dozer Push	41° 47.318' N	123° 51.262' W	Repair Needed	spread soil and slash pushed by dozer REAF_TONER 10/7
107	Dozer Push	41° 47.314' N	123° 51.244' W	Repair Needed	spread soil and slash pushed by dozer REAF_TONER 10/7
1615	Dozer Push	41° 49.707' N	123° 46.355' W	Repair Needed	Pull back berms 4-27-24 REAF Kovasi
1622	Repair Point	41° 50.552' N	123° 55.586' W	Repair Needed	Use hand crew to remove bucked logs and cut brush from creek.

- Drop Point (Blue square)
- Resource Location (Green diamond)
- Repair Point (Green circle)
- Dozer Push (Green line)
- Completed Dozer Line (Dashed line)
- Completed Hand Line (Dashed line)
- Completed Road as Line (Dashed line)
- Planned Secondary Line (Pink line)
- Access or Improved Road (Brown line)
- Repair Line (Brown line)
- Paved Road (Grey line)
- Gravel Road (Grey line)
- Primitive Road (Grey line)
- Closed Roads (Red dashed line)
- Local Road (Black line)
- 4WD (Black line)
- Closed Road (Red dashed line)
- Highway (Blue line)
- Smith River Cx Wildfire Perimeter (Red dashed line)
- Federal Wilderness Boundary (Green shaded area)

SPRING SUPPRESSION REPAIR

Smith River Complex - Jawbone Repair Area

94,639 acres as of 11/13/2023
Map Date 05/10/2024

Scale: 1:16,000
NAD83 UTM 10N

Smith River Complex
CA-SRF-000968
REPAIR