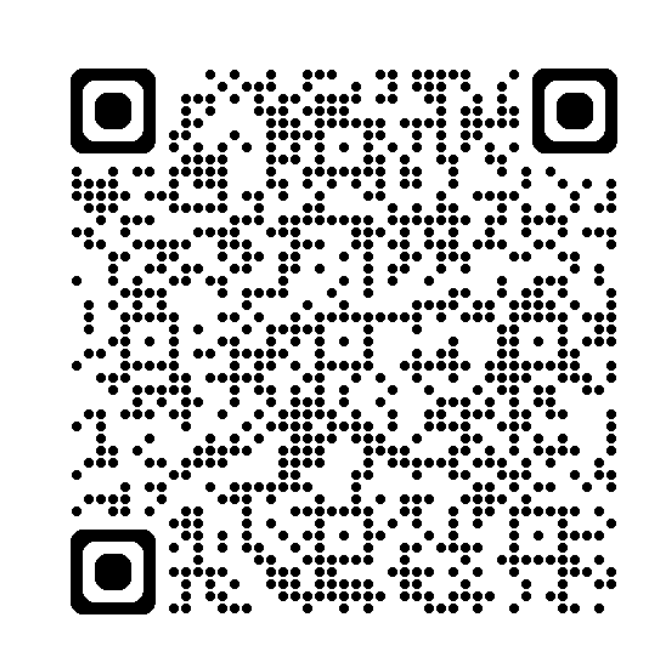


- Helispot
- Drop Point
- ⊗ POC Closure
- ⬢ Repeater
- ⊗ Completed Dozer Line
- H Completed Hand Line
- M Completed Mixed Construction Line
- R Completed Road as Line
- R Planned Road as Line
- S Planned Secondary Line
- ▬ Access or Improved Road
- ▬ Road
- ▬ Closed Roads
- ▬ Repair Line
- ▬ Road Repair
- ▬ Highway
- ▬ Local
- ▬ Connecting Road
- ▬ Paved Road
- ▬ Gravel Road
- ▬ Primitive Road
- ▬ Uninfected Area
- ▬ Federal Wilderness Boundary

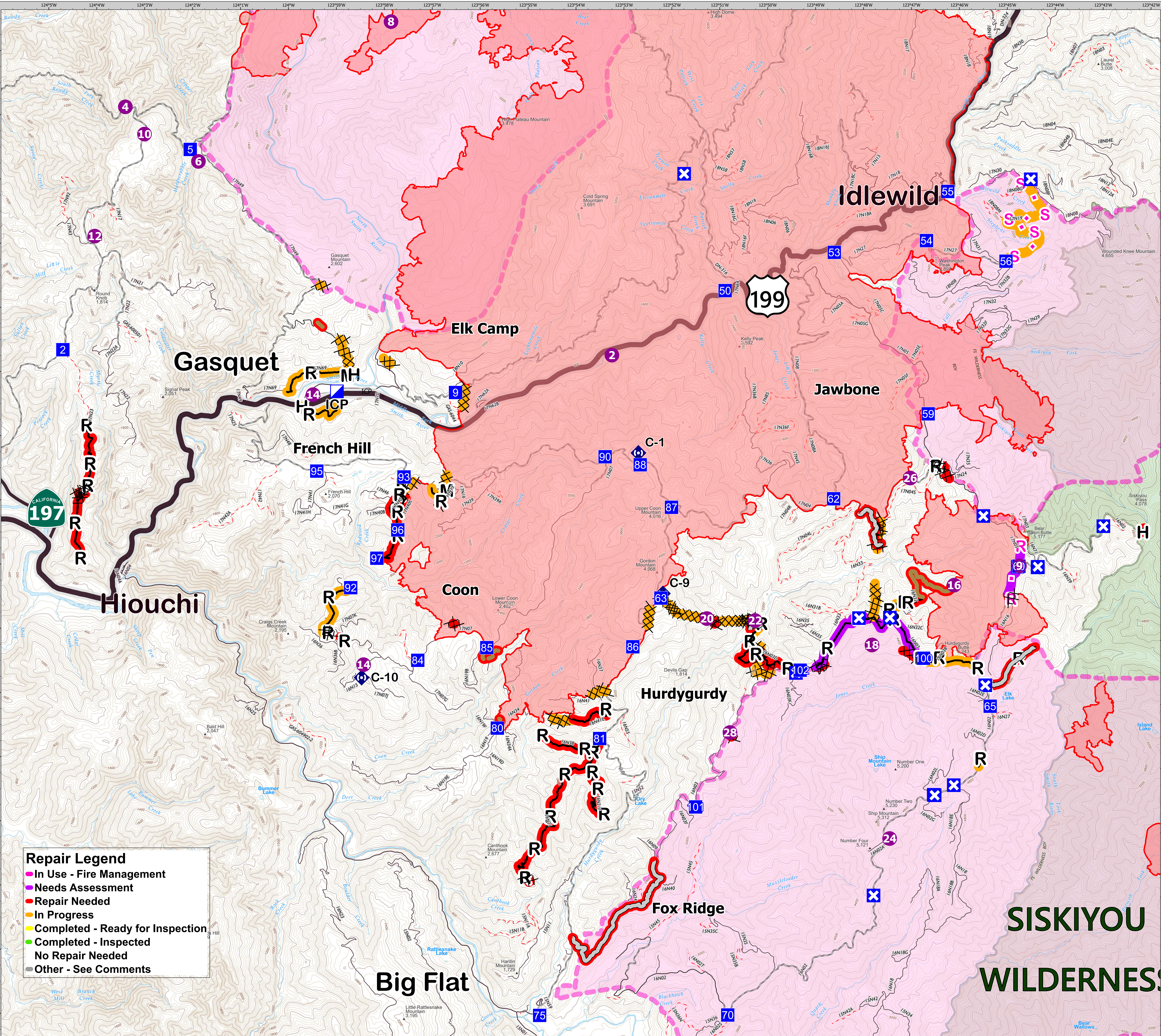
BRIEFING

Smith River Complex

CA-SRF-000968
05/12/2024
Est. acres 94,639 at 11/13/2023



0 0.5 1 2 Miles
1:28,000 NAD83 UTM 10N



Repair Legend

- In Use - Fire Management
- Needs Assessment
- Repair Needed
- In Progress
- Completed - Ready for Inspection
- Completed - Inspected
- No Repair Needed
- Other - See Comments

SISKIYOU
WILDERNES