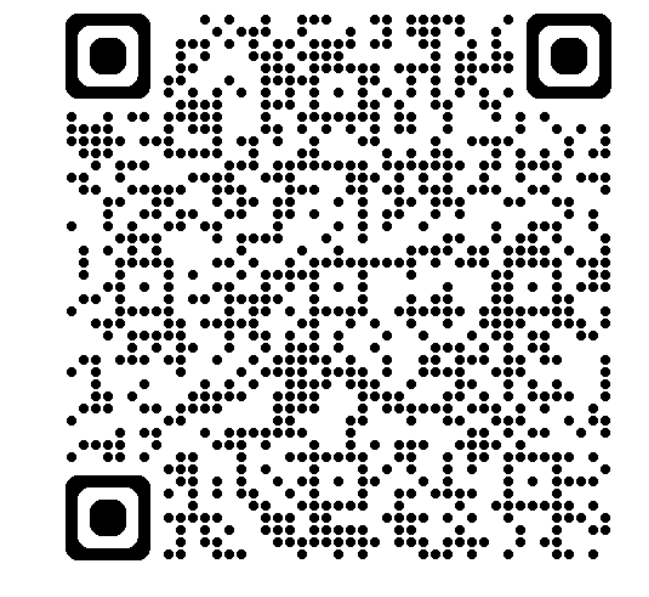


- Helispot
- Drop Point
- X POC Closure
- ◆ Repeater
- W Water Source
- ⊗ Completed Dozer Line
- H Completed Hand Line
- M Completed Mixed Construction Line
- R Completed Road as Line
- R Planned Road as Line
- S Planned Secondary Line
- = Access or Improved Road
- = Repair Line
- Highway
- Local Connecting Road
- Paved Road
- Gravel Road
- Primitive Road
- Closed Roads
- Uninfected Area
- Federal Wilderness Boundary
- Private Forest Boundary

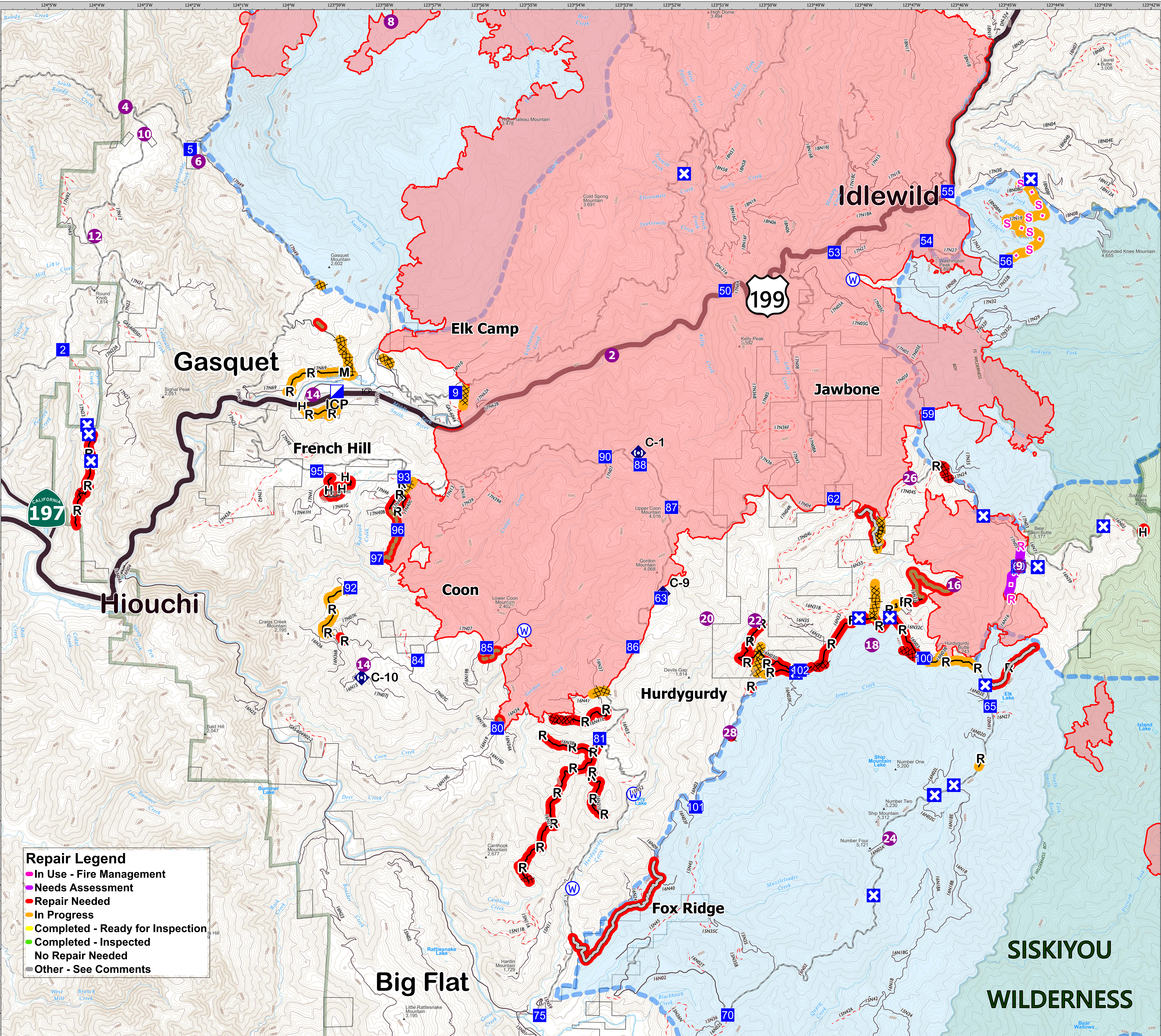
BRIEFING

Smith River Complex

CA-SRF-000968
05/16/2024
Est. acres 94,639 at 11/13/2023



0 0.5 1 2 Miles
1:28,000 NAD83 UTM 10N



Repair Legend

- In Use - Fire Management
- Needs Assessment
- Repair Needed
- In Progress
- Completed - Ready for Inspection
- Completed - Inspected
- No Repair Needed
- Other - See Comments

BrandyHurtado: 5/15/2024 5:18 PM