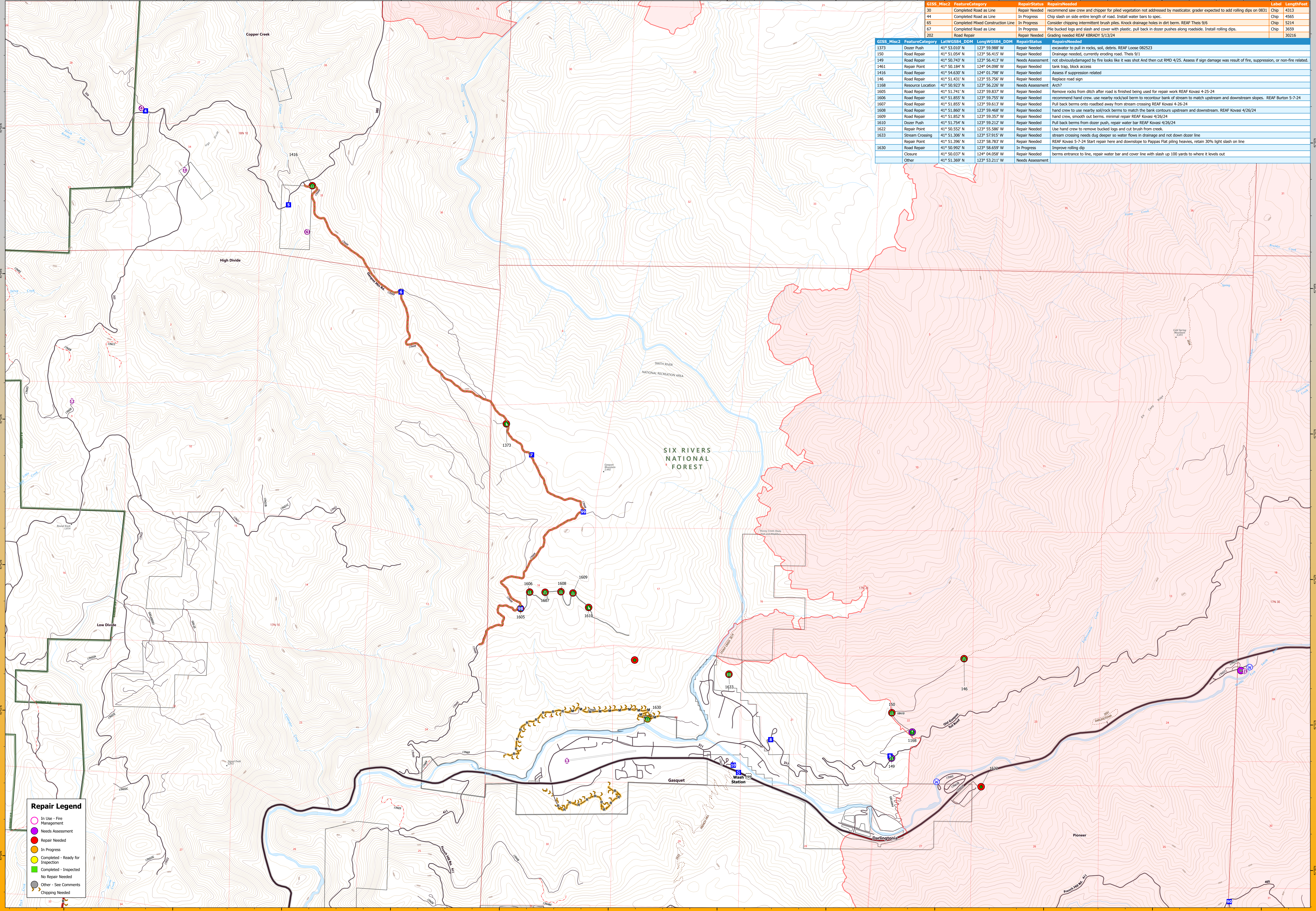


GISS_Misc2	FeatureCategory	LatWGS84_DDM	LongWGS84_DDM	RepairStatus	RepairNeeded	Label	LengthFeet
30	Completed Road as Line	41° 53.010' N	123° 59.988' W	Repair Needed	recommend saw crew and chipper for piled vegetation not addressed by masticator; grader expected to add rolling dips on 0831	Chp	4313
44	Completed Road as Line	41° 51.054' N	123° 56.413' W	In Progress	Chip slash on side entire length of road. Install water bars to spec.	Chp	4565
65	Completed Mixed Construction Line	41° 50.743' N	123° 56.413' W	In Progress	Consider chipping intermittent brush piles. Knock drainage holes in dirt berm. REAF This 9/5	Chp	5214
67	Completed Road as Line	41° 50.630' N	124° 01.798' W	In Progress	Pile bucked logs and slash and cover with plastic; pull back in dozer pushes along roadside. Install rolling dips.	Chp	3659
703	Road Repair	41° 51.431' N	123° 55.756' W	Repair Needed	Grading needed REAF KBRADY 5/13/24		30216
1373	Dozer Push	41° 53.010' N	123° 59.988' W	Repair Needed	excavator to pull in rocks, soil, debris. REAF Loose 082523		
150	Road Repair	41° 51.054' N	123° 56.413' W	Repair Needed	Drainage needed, currently eroding road. This 9/1		
149	Road Repair	41° 50.743' N	123° 56.413' W	Needs Assessment	not obviously damaged by fire looks like it was shot And then cut RMD 4/25. Assess if sign damage was result of fire, suppression, or non-fire related.		
1461	Repair Point	41° 50.194' N	124° 04.098' W	Repair Needed	bank trap, block access		
1416	Road Repair	41° 54.630' N	124° 01.798' W	Repair Needed	Assess if suppression related		
146	Road Repair	41° 51.431' N	123° 55.756' W	Repair Needed	Replace road sign		
1168	Resource Location	41° 50.923' N	123° 56.226' W	Needs Assessment	Arch?		
1605	Road Repair	41° 51.741' N	123° 59.837' W	Repair Needed	Remove rocks from ditch after road is finished being used for repair work REAF Kovasi 4-25-24		
1606	Road Repair	41° 51.855' N	123° 59.755' W	Repair Needed	recommend hand crew, use nearby rock/soil berm to recontour bank of stream to match upstream and downstream slopes. REAF Burton 5-7-24		
1607	Road Repair	41° 51.855' N	123° 59.613' W	Repair Needed	Pull back berms onto roadbed away from stream crossing REAF Kovasi 4-26-24		
1608	Road Repair	41° 51.860' N	123° 59.668' W	Repair Needed	hand crew to use nearby soil/rock berms to match the bank contours upstream and downstream. REAF Kovasi 4/26/24		
1609	Road Repair	41° 51.852' N	123° 59.357' W	Repair Needed	hand crew, smooth out berms, minimal repair REAF Kovasi 4/26/24		
1610	Dozer Push	41° 51.754' N	123° 59.212' W	Repair Needed	Pull back berms from dozer push, repair water bar REAF Kovasi 4/26/24		
1622	Repair Point	41° 50.552' N	123° 55.586' W	Repair Needed	Use hand crew to remove bucked logs and cut brush from creek.		
1633	Stream Crossing	41° 51.306' N	123° 57.915' W	Repair Needed	stream crossing needs dug deeper so water flows in drainage and not down dozer line		
1633	Repair Point	41° 51.306' N	123° 58.783' W	Repair Needed	REAF Kovasi 5-7-24 Start repair here and downslope to Peppas Flat; bring heaves, retain 30% light slash on line		
1630	Road Repair	41° 50.992' N	123° 58.659' W	In Progress	Improve rolling dip		
1630	Closure	41° 50.037' N	124° 04.058' W	Repair Needed	berms entrance to line, repair water bar and cover line with slash up 100 yards to where it levels out		
Other		41° 51.369' N	123° 53.211' W	Needs Assessment			



Repair Legend


- In Use - Fire Management
- Needs Assessment
- Repair Needed
- In Progress
- Completed - Ready for Inspection
- Completed - Inspected
- No Repair Needed
- Other - See Comments
- Chipping Needed

- Helispot
- Drop Point
- POC Gate
- Water Source
- Closure
- Other
- Stream Crossing
- Road Repair
- Resource Location
- Repair Point
- Dozer Push
- Paved Road
- Gravel Road
- Primitive Road
- Closed Roads
- Local Road
- 4WD
- Closed Road
- Highway
- Smith River Cx Wildfire Perimeter


SPRING SUPPRESSION REPAIR

Smith River Complex - Gasquet / Elk Camp Repair Area


94,639 acres as of 11/13/2023
Map Date 05/17/2024



INTERAGENCY INCIDENT MANAGEMENT TEAM



FOREST SERVICE
DEPARTMENT OF AGRICULTURE



SIX RIVERS National Forest



Smith River Complex
CA-SRF-000968

REPAIR

1:14,000 NAD83 UTM 10N