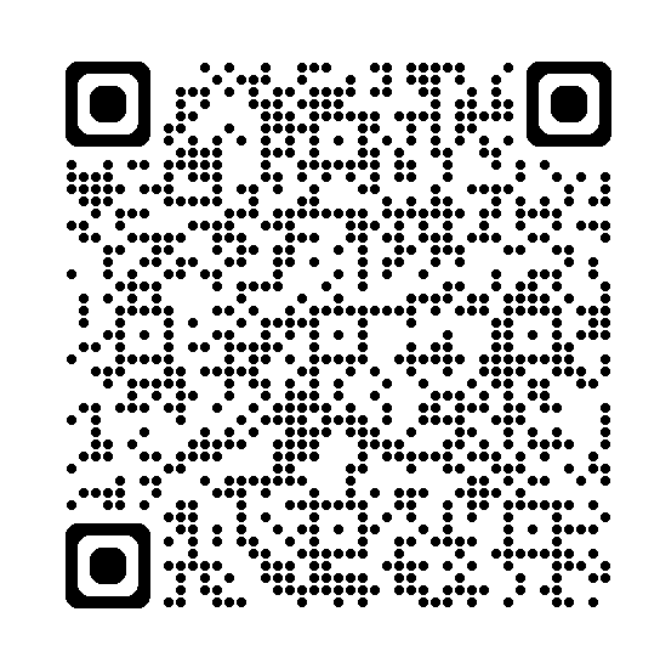


- Helispot
- ⊗ Drop Point
- ⊗ POC Closure
- ⊗ Repeater
- ⊗ Water Source
- ⊗ Completed Dozer Line
- ⊗ Completed Hand Line
- ⊗ Completed Mixed Construction Line
- ⊗ Completed Road as Line
- ⊗ Planned Road as Line
- ⊗ Planned Secondary Line
- ⊗ Access or Improved Road
- ⊗ Repair Line
- ⊗ Closed Roads
- ⊗ Uninfected Area
- ⊗ Federal Wilderness Boundary
- ⊗ Private Forest Boundary
- ⊗ Highway
- ⊗ Local Connecting Road
- ⊗ Paved Road
- ⊗ Gravel Road
- ⊗ Primitive Road

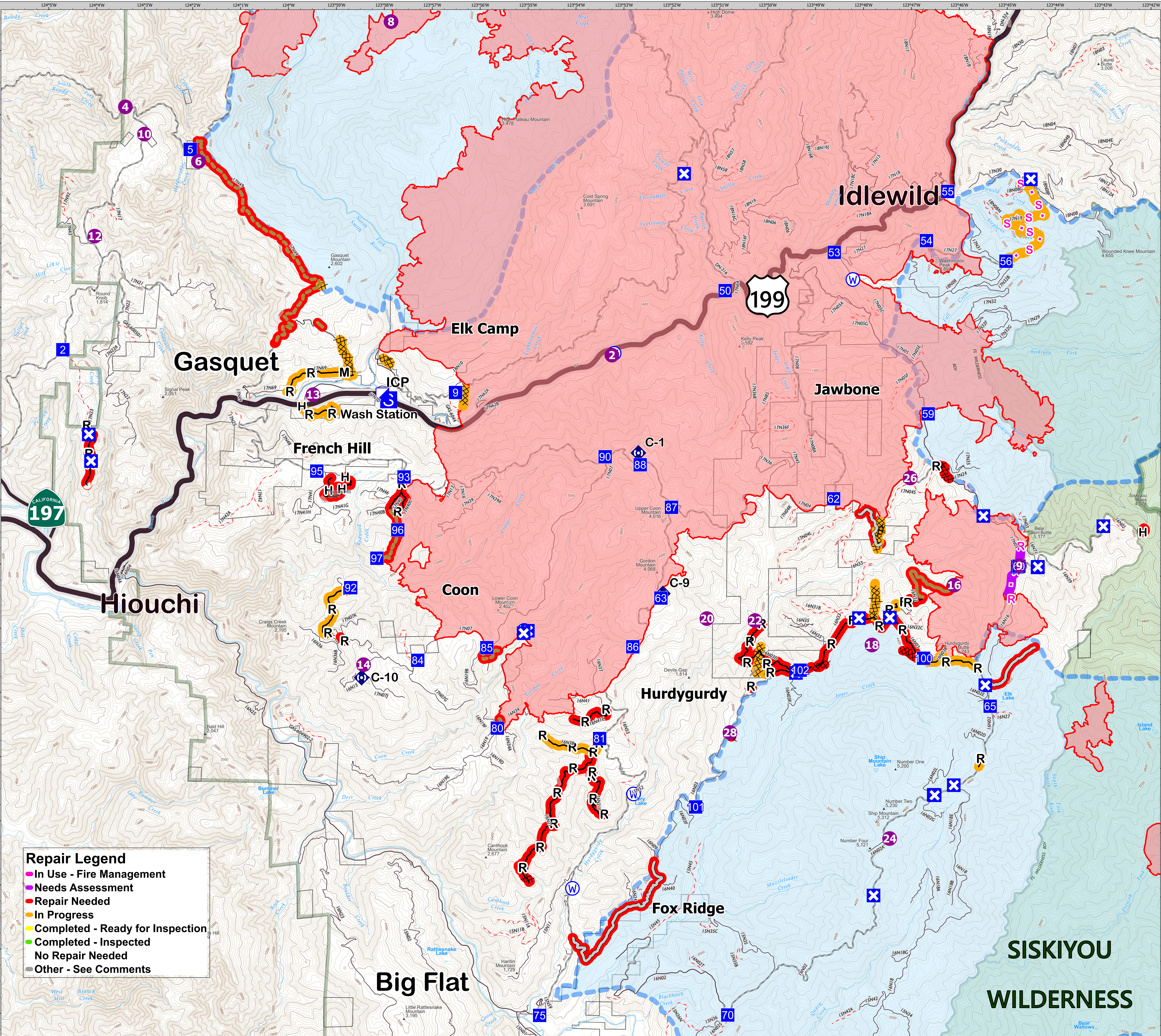
BRIEFING

Smith River Complex

CA-SRF-000968
05/17/2024
Est. acres 94,639 at 11/13/2023



0 0.5 1 2 Miles
1:28,000 NAD83 UTM 10N



- Repair Legend**
- In Use - Fire Management
 - Needs Assessment
 - Repair Needed
 - In Progress
 - Completed - Ready for Inspection
 - Completed - Inspected
 - No Repair Needed
 - Other - See Comments