

- Helispot
- Drop Point
- ✕ POC Closure
- ◆ Repeater
- ⊙ Water Source
- ⊗ Completed Dozer Line
- Completed Hand Line
- Completed Road as Line
- Planned Road as Line
- Planned Secondary Line
- Access or Improved Road
- Repair Line
- Road Repair
- Highway
- Local Connecting Road
- Paved Road
- Gravel Road
- Primitive Road
- Closed Roads
- Uninfected Area
- Federal Wilderness Boundary
- Private Forest Boundary

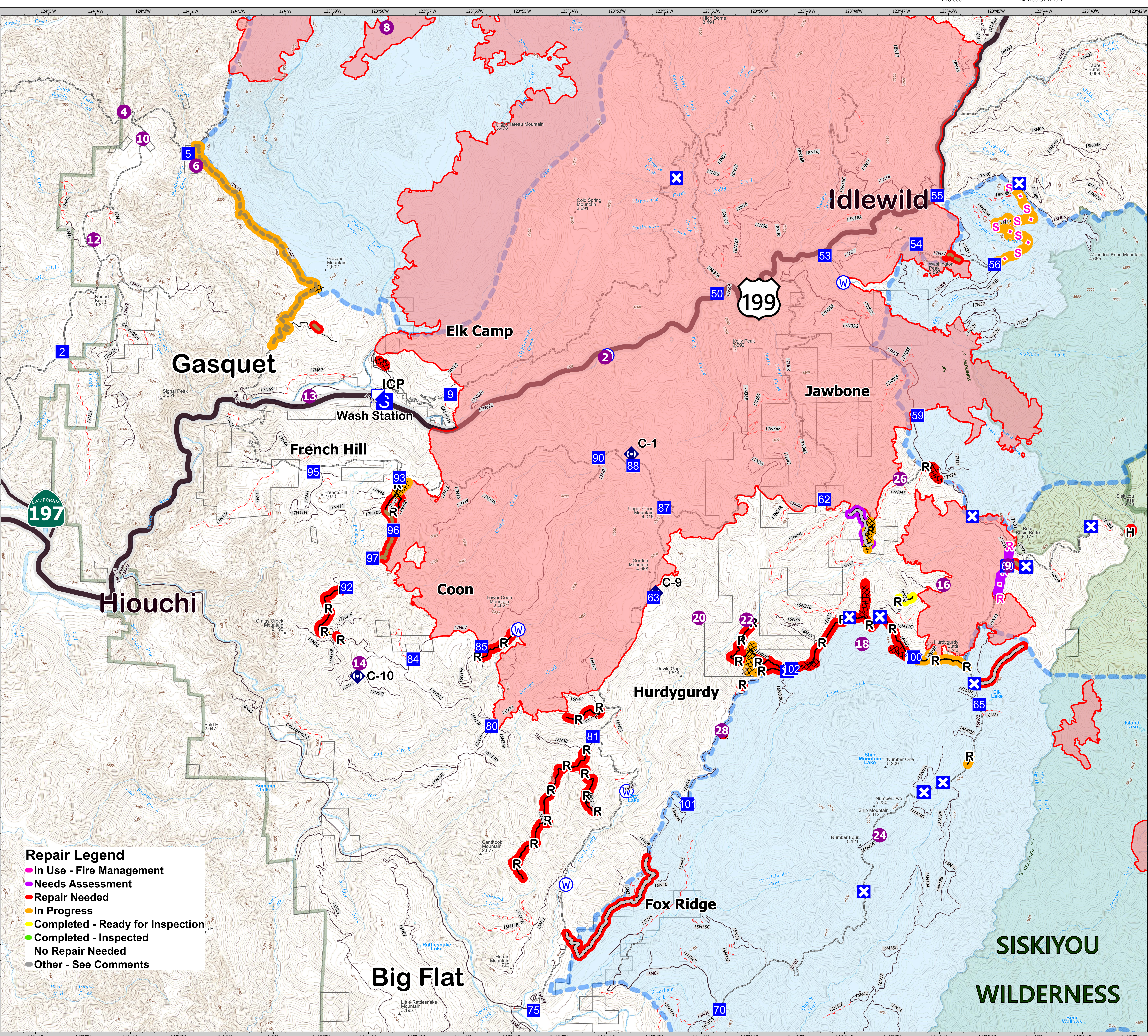
# BRIEFING

## Smith River Complex

CA-SRF-000968  
05/22/2024  
Est. acres 94,639 at 11/13/2023



0 0.5 1 2 Miles  
1:28,000 NAD83 UTM 10N



- Repair Legend**
- In Use - Fire Management
  - Needs Assessment
  - Repair Needed
  - In Progress
  - Completed - Ready for Inspection
  - Completed - Inspected
  - No Repair Needed
  - Other - See Comments