

- Helispot
- Drop Point
- ✕ POC Closure
- ⬇ Repeater
- Ⓜ Water Source
- 🌲 Landing or Log Deck
- ⌘ Completed Dozer Line
- ⌘ Completed Hand Line
- ⌘ Completed Road as Line
- ⌘ Planned Road as Line
- ⌘ Access or Improved Road
- ⌘ Road Repair
- ⌘ Highway
- Local Connecting Road
- Paved Road
- Gravel Road
- Primitive Road
- Closed Roads
- Uninfected Area
- ⌘ Little Jones TS
- Federal Wilderness Boundary
- Private Forest Boundary

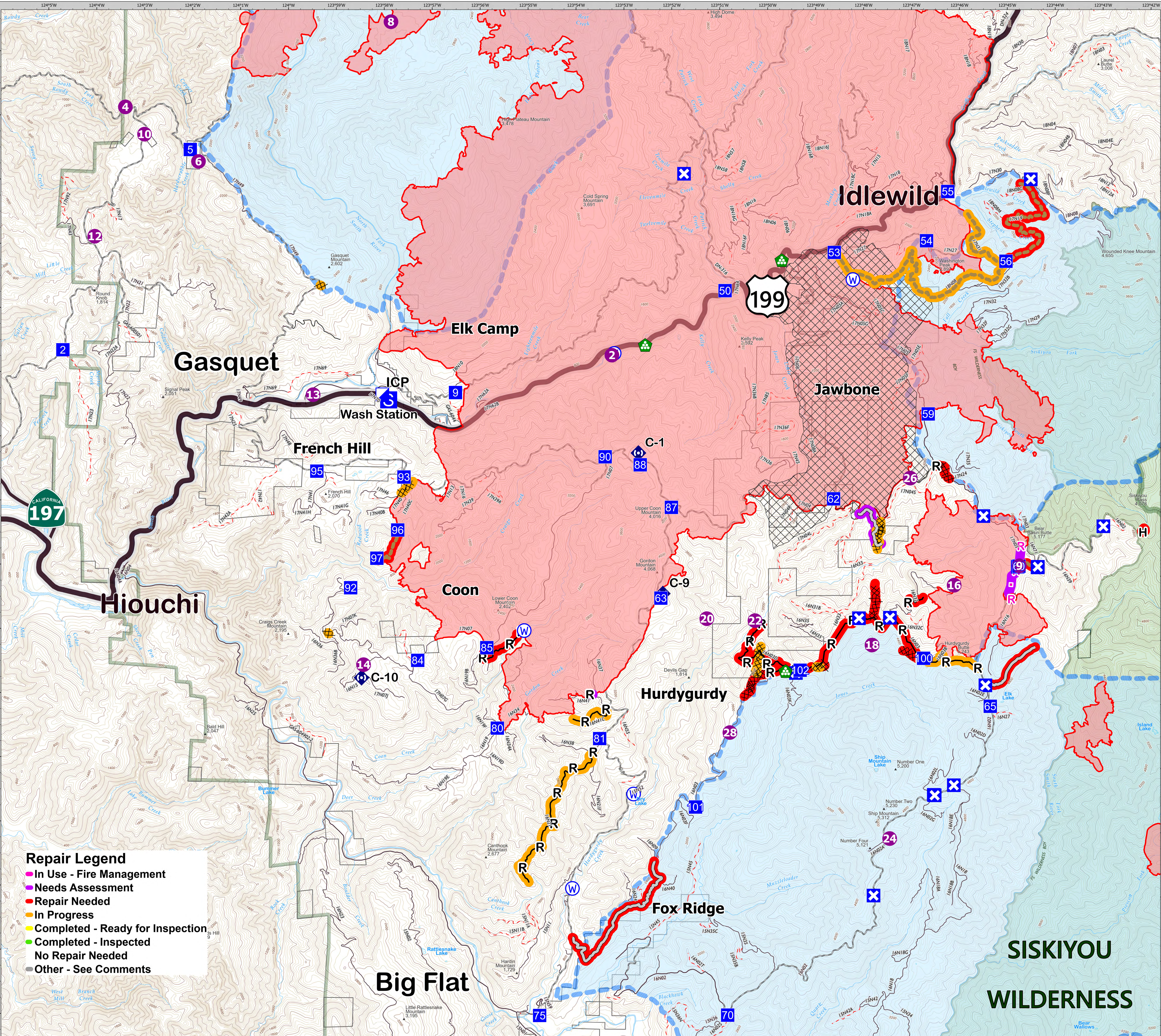
BRIEFING

Smith River Complex

CA-SRF-000968
05/24/2024
Est. acres 94,639 at 11/13/2023



0 0.5 1 2 Miles
1:28,000 NAD83 UTM 10N



- Repair Legend**
- In Use - Fire Management
 - Needs Assessment
 - Repair Needed
 - In Progress
 - Completed - Ready for Inspection
 - Completed - Inspected
 - No Repair Needed
 - Other - See Comments