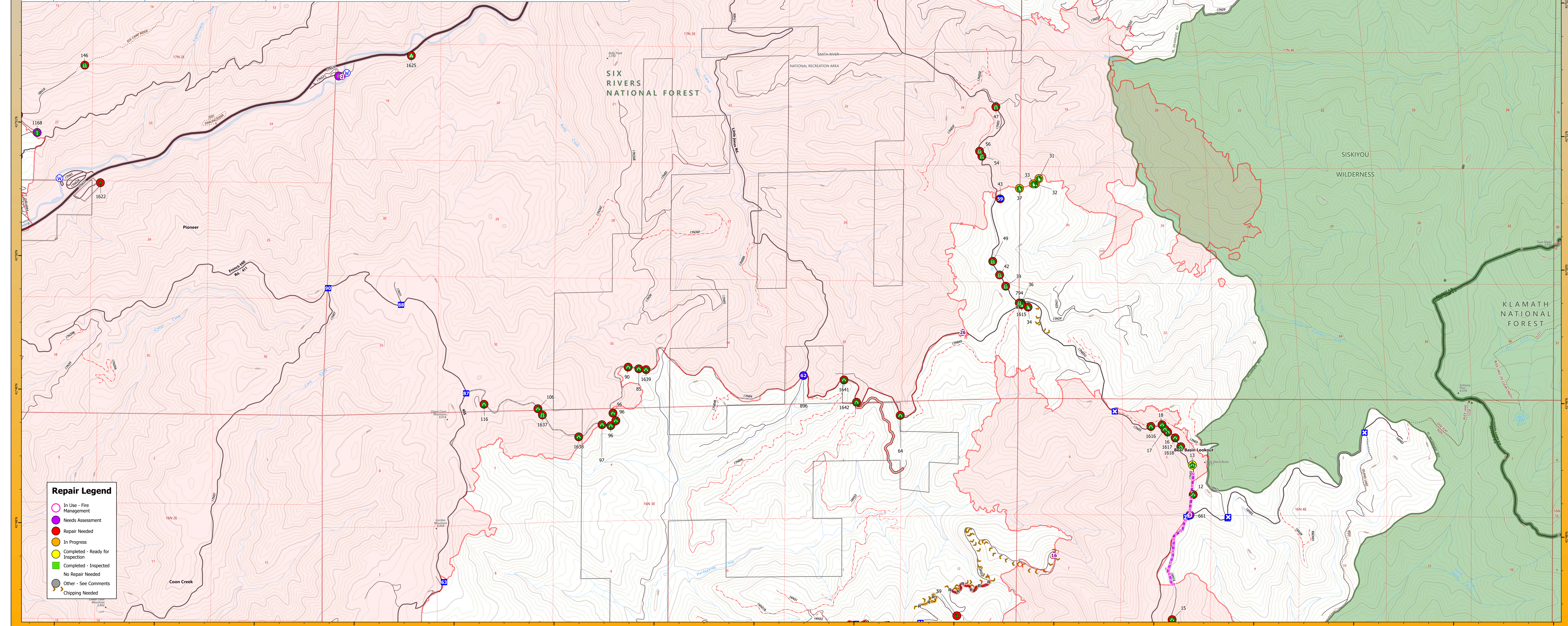


GISS_Misc2	FeatureCategory	LatWGS84_DDM	LongWGS84_DDM	RepairStatus	RepairsNeeded
896	Drop Point	41° 49.161' N	123° 48.529' W	Needs Assessment	Spot check needed by roads/hydro to assess if repair needed. Minor soil displacement from dozer tracks but no major damage.
43	Drop Point	41° 50.496' N	123° 46.576' W	Repair Needed	pull berms back, install barriers around edge of parking area. Spread seed and mulch around edges. SJ 4/19
661	Helispot	41° 48.143' N	123° 44.648' W	Needs Assessment	
36	Dozer Push	41° 49.718' N	123° 46.253' W	Repair Needed	decompact bladed area, pull berms back over area and slash. block ingress. Williams 9/8
1150	Road Repair	41° 51.054' N	123° 54.515' W	Repair Needed	Drainage needed, currently eroding road. Thels 9/1
989	Road Repair	41° 54.483' N	123° 51.748' W	Repair Needed	Burned roots likely, repair needed. Flagged. REAF Kovasi 4/26/24
1002	Road Repair	41° 52.439' N	123° 52.252' W	Repair Needed	
37	Dozer Push	41° 50.578' N	123° 46.384' W	In Progress	FS CRITICAL REPAIR, recontour line to restore grade, salvage sod and replant in line. hand crew with excavator recommended Williams/Madera/Platte 9/7
32	Dozer Push	41° 50.613' N	123° 46.226' W	In Progress	pull berms and slash back over line. recontour. Williams 9/7
31	Dozer Push	41° 50.653' N	123° 46.150' W	In Progress	Pull berms and slash back, decompact, roughen surface, and seed. Williams/Madera/Platt 9/7
33	Dozer Push	41° 50.612' N	123° 46.232' W	In Progress	FS CRITICAL REPAIR, recontour drainage across line. Williams 9/7
992	Road Repair	41° 52.407' N	123° 52.014' W	Repair Needed	Replace sign
65	Repair Point	41° 53.362' N	123° 47.914' W	Repair Needed	haul logs out, remove brush and chip pile
34	Dozer Push	41° 49.690' N	123° 46.287' W	Repair Needed	pull berms in and recontour dirt piles. roughen surface (light potato patch for water run off)
42	Road Repair	41° 49.928' N	123° 46.575' W	Repair Needed	patch chip seal.
49	Road Repair	41° 50.030' N	123° 46.645' W	Repair Needed	patch chip seal
704	Road Repair	41° 49.720' N	123° 46.232' W	Repair Needed	patch chip seal
39	Road Repair	41° 49.845' N	123° 46.513' W	Repair Needed	patch chip seal
54	Road Repair	41° 50.816' N	123° 46.763' W	Repair Needed	patch chip seal
56	Road Repair	41° 50.854' N	123° 46.787' W	Repair Needed	patch chip seal
47	Road Repair	41° 51.186' N	123° 46.627' W	Repair Needed	patch chip seal
74	Road Repair	41° 52.625' N	123° 49.260' W	Repair Needed	patch chip seal
75	Road Repair	41° 52.664' N	123° 49.256' W	Repair Needed	patch chip seal
72	Repair Point	41° 52.728' N	123° 49.298' W	Repair Needed	chip small material. haul or buck up large material
13	Culvert	41° 48.518' N	123° 44.628' W	Completed - Ready for Inspection	CRITICAL REPAIR. Remove debris from culvert inlet. REAF_TONER 9/13
15	Culvert	41° 47.358' N	123° 44.818' W	Repair Needed	FS CRITICAL REPAIR. Remove woody debris from culvert and ditch leading to culvert... type 3 excavator recommended REAF_TONER 9/16
59	Repair Point	41° 47.373' N	123° 46.972' W	Repair Needed	re-install road block REAF_TONER 10/8
18	Culvert	41° 48.817' N	123° 44.536' W	Repair Needed	dig out inlet with small excavator and hand crew. REAF_TONER 10/1
16	Culvert	41° 48.763' N	123° 44.878' W	Repair Needed	clear inlet with hand crew REAF_TONER 10/1
17	Culvert	41° 48.784' N	123° 44.906' W	Repair Needed	clear inlet, half buried
12	Culvert	41° 48.296' N	123° 44.617' W	Repair Needed	
99	Repair Point	41° 52.550' N	123° 50.565' W	Repair Needed	Chipping and log bucking needed. 10/2 REAF Thels
146	Road Repair	41° 51.431' N	123° 55.756' W	Repair Needed	Replace road sign
116	Culvert	41° 48.923' N	123° 51.724' W	Repair Needed	the following is up to date RMD 4/26. critical repair. out outlet and clear pipe for adequate drainage from ditch REAF_TONER 10/4
106	Culvert	41° 48.894' N	123° 51.184' W	Repair Needed	critical repair. clear soil and rock from inlet and improve ditch REAF_TONER 10/4
97	Culvert	41° 48.779' N	123° 50.540' W	Repair Needed	CRITICAL REPAIR. remove debris from Culvert inlet REAF_TONER 9/13 remove material from culvert inlet REAF_KBRADY 5/13/24
96	Culvert	41° 48.772' N	123° 50.453' W	Repair Needed	CRITICAL REPAIR. remove debris from Culvert inlet REAF_TONER 10/4 remove material from ditch at inlet, create a more gradual slope of ditch grade line REAF_KBRADY 5/13/24
90	Culvert	41° 49.212' N	123° 50.285' W	Repair Needed	CRITICAL REPAIR. remove debris from Culvert inlet REAF_TONER 10/4
85	Culvert	41° 49.200' N	123° 50.178' W	Repair Needed	CRITICAL REPAIR. remove debris from Culvert inlet REAF_TONER 10/4
64	Culvert	41° 48.870' N	123° 47.556' W	Repair Needed	CRITICAL REPAIR. remove debris from Culvert inlet REAF_TONER 10/4
906	Repair Point	41° 52.496' N	123° 49.120' W	Needs Assessment	Monitor for effectiveness, shore up if needed
1168	Resource Location	41° 50.923' N	123° 56.226' W	Needs Assessment	Arch?
1615	Dozer Push	41° 49.707' N	123° 46.355' W	Repair Needed	Pull back berms 4-27-24 REAF Kovasi
1616	Culvert	41° 48.803' N	123° 45.047' W	Repair Needed	Culvert clogged with rock REAF Kovasi
1617	Culvert	41° 48.720' N	123° 44.803' W	Repair Needed	Culvert clogged with debris REAF Kovasi 4-27-24
1618	Culvert	41° 48.653' N	123° 44.745' W	Repair Needed	Clogged culvert with debris REAF Kovasi 4-27-24
1619	Road Repair	41° 53.570' N	123° 44.412' W	Repair Needed	Culvert repair pull out debris
1620	Road Repair	41° 53.577' N	123° 44.438' W	Repair Needed	Pull debris out of culvert
1622	Repair Point	41° 50.552' N	123° 55.586' W	Repair Needed	Use hand crew to remove bucked logs and cut brush from creek.
1637	Road Repair	41° 48.84749392' N	123° 51.13813435' W	Repair Needed	Clear out ditch
1638	Culvert	41° 48.68622380' N	123° 50.77237407' W	Repair Needed	Clear out ditch near culvert inlet
96	Culvert	41° 48.90626258' N	123° 50.40226026' W	Repair Needed	CRITICAL REPAIR. remove debris from Culvert inlet REAF_TONER 10/4 remove material from ditch at inlet, create a more gradual slope of ditch grade line REAF_KBRADY 5/13/24
96	Culvert	41° 48.86607541' N	123° 50.43170262' W	Repair Needed	CRITICAL REPAIR. remove debris from Culvert inlet REAF_TONER 10/4 remove material from ditch at inlet, create a more gradual slope of ditch grade line REAF_KBRADY 5/13/24
1639	Culvert	41° 49.19451119' N	123° 50.10562617' W	Repair Needed	Inlet riser cover burned, needs replacing
1641	Culvert	41° 49.13169852' N	123° 48.12279521' W	Repair Needed	Inlet covered
1642	Culvert	41° 48.96531374' N	123° 47.99536555' W	Repair Needed	Inlet covered
1623	Landing or Log Deck	41° 52.953' N	123° 49.127' W	Repair Needed	Consolidate slash at centralized location.
1624	Landing or Log Deck	41° 52.870' N	123° 49.650' W	Repair Needed	Consolidate slash at centralized location.
1625	Landing or Log Deck	41° 51.528' N	123° 52.486' W	Repair Needed	Consolidate slash at centralized location.
Other		41° 51.369' N	123° 53.211' W	Needs Assessment	

GISS_Misc2	FeatureCategory	RepairStatus	RepairsNeeded	Label	Length/Foot
164	Planned Secondary Line	In Progress	Critical Repair - Remove debris from road ditch, pull out-slope berms	Chip	17654
167	Completed Road as Line	Repair Needed	Consult roads engineer to see if should be closed REAF Kovasi 4-27-24 Repair to standard - closed or decommissioned rd?	Chip	57
172	Planned Road as Line	Needs Assessment	Roadway needs grading due to ruts on the travel way. REAF BGOMEZ, 05/12/24		3529
74	Completed Road as Line	Repair Needed			16103
174	Planned Road as Line	Needs Assessment			1920
122	Completed Road as Line	In Progress	chip cut vegetation	Chip	1314
123	Completed Road as Line	Repair Needed	chip cut vegetation	Chip	481
124	Completed Road as Line	Repair Needed	chip cut vegetation	Chip	2241
156	Access or Improved Road	Repair Needed	pull berms, out slope road, install water bars, spread slash, block edge of road SJ 4/19	Chip	5696



**Repair Legend**

- In Use - Fire Management
- Needs Assessment
- Repair Needed
- In Progress
- Completed - Ready for Inspection
- Completed - Inspected
- No Repair Needed
- Other - See Comments
- Chipping Needed

- Helispot
- Drop Point
- POC Gate
- Water Source
- Helispot
- Drop Point
- Other
- Road Repair
- Resource Location
- Repair Point
- Landing or Log Deck
- Dozer Push
- Culvert
- Paved Road
- Gravel Road
- Primitive Road
- Closed Roads
- Local Road
- 4WD
- Closed Road
- Highway
- Smith River Cx Wildfire Perimeter
- Federal Wilderness Boundary

# SPRING SUPPRESSION REPAIR

## Smith River Complex - Jawbone Repair Area

94,639 acres as of 11/13/2023  
Map Date 05/17/2024

INDIANIA INTERAGENCY INCIDENT MANAGEMENT TEAM

FOREST SERVICE  
U.S. DEPARTMENT OF AGRICULTURE

SIX RIVERS National Forest

Smith River Complex  
CA-SRF-000968

# REPAIR

1:18,000  
NAD83 UTM 10N