

**** CORRECTED ****

INCIDENT ACTION PLAN SMITH RIVER COMPLEX - SOUTH

CA-SRF-000968

P5EK11



OPERATIONAL PERIOD

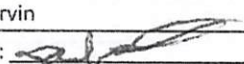
8/21/2023 0700

to

8/22/2023 0700



ORGANIZATION ASSIGNMENT LIST (ICS 203)

1. Incident Name: SMITH RIVER COMPLEX - SOUTH		2. Operational Period: Date From: 8/21/2023 Time From: 0700		Date To: 8/22/2023 Time To: 0700	
3. Incident Commander(s) and Command Staff:			7. Operation Section:		
IC/UC's	Tom Clemo / Stephen Fillmore(t)		Day Operations	Scott Grasmick / Nick Cleary(t)	
Deputy	Jon Lucas		Strategic Operations	Travis Ederer	
Safety Officer	R. Bertram / P. Cockrum / S. Davis(t)		Planning Operations	Tom Himmelrich / Mike Milkovich	
Information Officer	T. Stokesberry / T. Engberg / L. Walker				
Liaison Officer	R. Cablayan / J. Jones / B. Neumann / A. Widling		Branch	V	Shaun Craig / Erick D'Amico(t)
			Division/Group	A	Rick Dykhouse
4. Agency/Organization Representatives:			Division/Group	B	Patrick Hyde / Scott Roeber(t)
Agency/Organization	Name		Division/Group	D	Jere Classay
SRF Forest Supervisor	Ted McArthur		Division/Group	SOUTH STRUCTURE	Brett Hildebrand
Rogue/Siskiyou AREPs	D. Quinones / J. Winn / A. Watson		Division/Group		
SRF Agency Admin	K. Allen / A. Skowlund		Branch	XX	Joe Tieso
CAL OES (ESC)	Beck Blair		Division/Group	MM	Ron Oatman
CAL OES FIRE	Van Arroyo		Division/Group	PP	Corey Stowe
CAL Fire	Garrett Dean		Division/Group	SS	Unstaffed
CHP	Lt. Pete Roach		Division/Group	VV	Michael Willardson
Del Norte CO. OEM	Deborah Otenberg		Division/Group		
Crescent City Manager	Eric Wier		Branch		
SRF Sheriff Office	Jennifer Wooley		Division/Group		
Del Norte Sheriff LELO	Jon Maxwell		Division/Group		
Crescent City Police Chief	Richard Griffin		Division/Group		
Crescent City Fire Chief	Kevin Carey		Division/Group		
NPS LEO	Daniel Owens		Branch		
Tolowa Tribe	Amanda O'Connell		Division/Group		
Red Cross	Mary Dormind		Division/Group		
Resource Advisor	Donna Peppin		Division/Group		
5. Planning Section:			Division/Group		
Chief	John Germanetti		Division/Group		
Deputy	Robert Kovach		Branch		
Resource Unit	A. Hudley / J. Roberts / A. Nahas(t)		Division/Group		
Situation Unit	M. Held / J. Hunter / Z. Jackson(t)		Division/Group		
Demobilization Unit	Mike Dunkel		Division/Group		
GISS	Emily Dolhanski / Dianna Beasley		Division/Group		
FBAN	Nic Elmquist / Jennifer Anderson(t)		Division/Group		
IMET	James White		Air Operations Branch	Director:	John Crotty
Training Specialist	John Leblanc		Air Support Group Supervisor	Al Driesbach	
Check-In Recorder	David Charron(t)		Air Tactical Group Supervisor		
6. Logistics Section			Helibase Manager		
Chief	Bob Feldtz / Mike Farmer(t)				
Supply Unit			8. Finance/Administration Section		
Facilities Unit	Cassie Buckley(t)		Chief	Lisa Dow	
Ground Support Unit	Kevin Palm		Time Unit	Amanda Folendorf / Tiffanie Sachse-Santi	
Communications Unit	Glendon Chan / Chris Oliver(t)		Personnel Time	Ryan Bridgen / Terese Toomey(t)	
Medical Unit	Josh Fudge / Mike Lencioni		Comp/Claims Unit	Tina Weaver	
ITSS	Marty Cohn		Cost Unit	Sandra Tarvin	
Prepared By: Name:	Robert Kovach	Position/Title:	PSC	Signature:	
ICS 203		Date/Time:	8/20/2023 2300 hours		

UPDATED
UPDATED



Fire Weather Forecast



FORECAST NO: 4
PREDICTION FOR: Monday-Tuesday
DATE: August 21st, 2023
FORECAST ISSUED: 1800 August 20th, 2023

FIRE: Smith River Complex South
UNIT: CA-SRF-968
IMET: James White (240-778-5316)
SIGNED: *James White*

WEATHER DISCUSSION: * Valley elevations = 400ft (Gasquet), Ridgetop elevations = 3500 ft (Cold Springs) *
 Strong northeast winds gusting up to 25 mph will gradually subside this morning, leaving the east side of the fire relatively clear early in the day. Winds will quickly turn southwest this afternoon with gusts up to 20 mph in exposed areas. Southwest wind will bring cooler, moister marine air. RH will actually increase to near 50% on ridgetops this afternoon with temperatures in the low 70s. There is a slight chance of rain late today into Monday. Any accumulation will be less than 0.15 inches. Moist, cool, and cloudy conditions will persist on Tuesday.

TODAY:

WEATHER: Mostly cloudy. Heavy smoke in valleys near and west of the fires.
MAX TEMP: Valleys: 70-75°F (2-4°F ↓) **MIN RH:** Valleys: 56-61% (3-6% ↑)
 Ridgetops: 72-77°F (2-4°F ↓) **Ridgetops:** 50-55% (6-10% ↑)
CHC WTG RAIN: 5% **LAL:** 1 **SFC VIS:** 1-2 miles, clearing west side afternoon

WINDS: Valleys: Morning northeast 4-8 mph, afternoon southwest 3-6 mph.
(20 feet) Ridgetops: Morning northeast 10-15 mph gusts to 25, afternoon southwest 8-12 mph gusts to 20 mph.

MIXING HEIGHT: Rising to 7,000 ft by 1500. **TRANSPORT WIND:** Southwest 12-17 mph.

TONIGHT:

WEATHER: Cloudy. Moderate thermal belt 2500 to 4700 ft. Slight chance of rain.
MIN TEMP: Valleys: 60-64° (Little Change) **MAX RH:** Valleys: 95-100% (3-6% ↑)
 Ridgetops: 60-66° (3-6°F ↓) **Ridgetops:** 60-70% (20-30% ↑)
CHC WTG RAIN: 15% **LAL:** 1 **SFC VIS:** 1-2 miles, clearer east of the fire early morning

WINDS: Valleys: Downslope 2-4 mph.
(20 FEET) Ridgetops: North 3-6 mph.

MIXING HEIGHT: Dropping to 1,200 ft by 2200. **TRANSPORT WIND:** West 4-6 mph.

TUESDAY:

WEATHER: Cloudy. Heavy smoke in valleys near the fire in the morning. Slight chance of rain in the morning. Total accumulation of a trace to 0.1 inches.
MAX TEMP: Valleys: 68-73°F (2-4°F ↓) **MIN RH:** Valleys: 53-58% (2-4% ↓)
 Ridgetops: 66-71°F (3-6°F ↓) **Ridgetops:** 52-57% (1-3% ↑)
CHC WTG RAIN: 15% **LAL:** 1 **SFC VIS:** 1-2 miles around the fire, better if rain occurs

WINDS: Valleys: Morning downslope 2-4 mph afternoon upslope 3 to 6 mph.
(20 feet) Ridgetops: Morning northeast 2-4 mph, northwest 5-10 mph gusts to 18 mph.

MIXING HEIGHT: Rising to 7,000 ft by 1200. **TRANSPORT WIND:** Southwest 7-12 mph.

EXTENDED OUTLOOK: As the remnants of hurricane Hilary dissipate and move out of the area, weak high pressure will build in late in the week. This will kickoff a modest warming and drying trend for late in the week. Highs will return near the 80s with minimum RH in the 30s. Winds will mostly be gentle and terrain driven below 15 mph.

—————→
 Nearby Weather Observations



FIRE BEHAVIOR FORECAST

Incident Name: SMITH RIVER COMPLEX - SOUTH **Operational Period:** Date From: 8/21/23 Date To: 8/22/23
Time From: 0700 Time To: 0700

Forecast Number: 04 **Type of Fire:** Wildfire **Unit:** Six Rivers National Forest - Gasquet District

INPUTS

WEATHER SUMMARY:

See Fire Weather Forecast

FUELS SUMMARY:

Due to the below normal amount of precipitation, live fuel moisture levels did not recover this spring, making the shrubs readily available for consumption. There are abundant snag patches within the fire scars; Biscuit (2002), Coon (2015), Eclipse Complex (2017) and Slater (2020). The fuel moistures of the manzanita are around 110% and the 1000-hour fuels 9%, below critical levels. Given the dryness of the vegetation, there is abundant available fuels to continue growth of all uncontained fires within the complex.

OUTPUTS

FIRE BEHAVIOR

GENERAL:

We are currently in what is the peak of fire season for this area of the state. Historically, the fuels along the riparian areas have been resistant to burning, but that is not the case this year. Under smoky conditions, the fire will consume the heavy dead surface fuels and have isolated tree torching where there is a higher fuel load under the timber canopy. Roll-out will continue to be a driver of growth in these areas. When the fire is exposed to a stronger wind or gets established on a steep slope with aligned fuels and topography, expect rapid rates of spread with sustained crown runs and moderate range spotting. This intense fire behavior was experienced on the northern flank of the Kelly fire on August 17th and on the southern flank on August 19th.

Fire Danger Indices – 2022 IRPG Page 39
Energy Release Component (ERC): 95th
August Average ERC Percentile: 85th
2002 Biscuit Fire Large growth days ERC Percentile: 90th & 97th
Peak Burn Period - Probability of Ignition (PIG): 40% (shaded), 60% (unshaded)

SPECIFIC:

Branch V: The Corral and Diamond fires, burning in the scabbier 2002 Bisquit fire, continue to slowly grow on most portions of their perimeters. The Corral will likely grow at a faster rate to the north as it has crossed Shell Creek and will want to run the slope. The northern portion of the Kelly burned into the southeastern portion of the Holiday. The unburned fuel between the two fires will continue to consume along roads 311 and 316. The eastern flank of the Kelly fire will begin to impact Highway 199 north of Idlewild Cal Trans yard (DP 55). Winds tend to be gusty and erratic in this area, so heads up for possible spots across the highway.

Branch XX: The Hurdy Gurdy fire in Div. PP has thicker, more continuous fuels and along the western portion of the 16N16 road. The western portion of the Coon fire in Div. VV is burning in a 2015 burn scar, limiting growth in that direction. Growth will continue to be in a northeasterly direction, between the Coon and Gordon Creeks.

AIR OPERATIONS:

Sunrise 0601, Last Light 2037 (Daylength: losing 2 min, 33 sec each day)

You are operating in an extremely complex fire environment; steep slopes, critically dry fuels, and shifting winds. It is also difficult to establish good lookouts with the terrain and smoke. Ensure your adjoining resources know your location and can notify you of changing conditions.

SAFETY:

Always base actions on current and expected fire behavior given the environmental conditions in your local area. Maintain situational awareness for changing conditions as you change locations (fuel, weather, and topography).

Prepared by Fire Behavior Analyst: Nic Elmquist/Jenn Anderson (t)

Signature: *Nic Elmquist/Jenn Anderson*

Date/Time: 8/20/23 at 1800

ASSIGNMENT LIST (ICS 204 WF)

CONTROLLED UNCLASSIFIED INFORMATION//BASIC

1. Incident Name: SMITH RIVER COMPLEX - SOUTH	2. Operational Period: Date From: 08/21/23 Date To: 08/22/23 Time From: 0700 Time To: 0700	3. Branch V	Division A
--	---	------------------------------	-----------------------------

4. Operations Personnel:		Page 1 of 1	Alpha
Operations Section Chief: Scott Grasmick / Nick Cleary(t)		Operations: Tom Himmelrich / Mike Milkovich	
Branch Director: Shaun Craig / Erick D'Amico(t)		Branch Safety:	
Division/Group Supervisor: Rick Dykhouse		Air Attack:	

5. Resources Assigned:		** Resources Below in Bold are 12 Hour **					
Resource Identifier	ALS	LWD	Leader	Personnel	Request #	Hours	Reporting Location
HC2IA BLM FOLMSOM VETS		8/29	ROGER HOOPER	17	C-6	0700 - 1900	WARD FIELD CAMP
ENG3 PVT NATIONAL WILDLAND 142		9/3	JASON DAVIS	3	E-142	0700 - 1900	WARD FIELD CAMP
ENG3 PVT SCHOLLS 148		9/3	BRIAN RINGEN	3	E-148	0700 - 1900	WARD FIELD CAMP
ENG4 PVT FIRECO 136		9/2	TYLER NAIL	2	E-136	0700 - 1900	WARD FIELD CAMP
ENG4 PVT WILDFIRE 219		9/2	MIKE FOSTER	3	E-219	0700 - 1900	WARD FIELD CAMP
ENG6 PVT VALKYRIE 138		9/2	CHARLES REESE	3	E-138	0700 - 1900	WARD FIELD CAMP
ENG6 PVT HB FORESTRY		9/2	AARON GONZALEZ	3	E-211	0700 - 1900	WARD FIELD CAMP
DOZ2 STF 52		9/3	MIKE KNOTT	2	E-223	0700 - 1900	WARD FIELD CAMP
DOZ2 PVT EVANS 169		9/2	TOM EVANS	1	E-169	0700 - 1900	WARD FIELD CAMP
WTT2 PVT NATIONAL 165		9/2	AARON PHILLIPS	2	E-165	0700 - 1900	WARD FIELD CAMP
FMOD PAC RIDGELINE		9/3	ERNIE ADAMS	2	O-156	0700 - 1900	WARD FIELD CAMP
EMPF KORTEKAAS	X	9/1	JOSHUA KORTEKAAS	1	O-99	0700 - 1900	WARD FIELD CAMP
EMTF WEST		9/2	BRANDON WEST	1	O-106	0700 - 1900	WARD FIELD CAMP
<i>DOZ2 PVT GARMAN CONT 172 9/2 DOUG GRIDER 2 E-172</i>							
<i>DOZ2 PVT SMOKY MOUNTAIN 173 9/2 IKE TOMLINSON 2 E-173</i>							
<i>DOZ2 PVT JUNGWORTH 171 9/2 PETE BROWN 2 E-171</i>							

6. Work Assignments:
Construct direct and indirect hand and dozer lines where feasible to maximize suppression efforts and defend the Highway 199 corridor and adjacent communities.

7. Special Instructions:
Be aware of retardant avoidance areas, mine shafts and naturally occurring asbestos.

Safety Officer(s) assigned to Branch V: Shaun Davis

8. Communications								
Name	Ch	Function	Rx Freq	Rx Tone	Tx Freq	Tx Tone	Mode	Notes
NIFC C3	1	COMMAND	170.4250	(T3) 131.8	168.0750	(T3) 131.8	A	CAMP 6
NIFC T3	7	TACTICAL	168.6000	(T3) 131.8	168.6000	(T3) 131.8	A	
CALCORD	15	TACTICAL	156.0750	(T6) 156.7	156.0750	(T6) 156.7	A	EMS AIR COORDINATION
A/G TAC	14	A/G TAC	169.4875	0.0	169.4875	0.0	A	
AIRGUARD	16	AIRGUARD	168.6250	0.0	168.6250	(T1) 110.9	A	

9. Prepared by: Name: A. Hudley / J. Roberts / A. Nahas(t) RESL
Signature: _____
Date/Time: 8/20/2023 2200 Personnel Count: 43

** CORRECTED **

ASSIGNMENT LIST (ICS 204 WF)

CONTROLLED UNCLASSIFIED INFORMATION//BASIC

1. Incident Name: SMITH RIVER COMPLEX - SOUTH	2. Operational Period: Date From: 08/21/23 Date To: 08/22/23 Time From: 0700 Time To: 0700	3. Branch Division V D Page 1 of 1 Delta
--	---	---

4. Operations Personnel:	
Operations Section Chief: Scott Grasmick / Nick Cleary(t)	Operations: Tom Himmelrich / Mike Milkovich
Branch Director: Shaun Craig / Erick D'Amico(t)	Branch Safety:
Division/Group Supervisor: Patrick Byde / Scott Roeber(t) UPDATED	Air Attack:

5. Resources Assigned: ** Resources Below in Bold are 12 Hour **							
Resource Identifier	ALS	LWD	Leader	Personnel	Request #	Hours	Reporting Location
HC2IA BIA FORT APACHE		9/3	BRIAN QUINTERO	22	C-25	0700 - 1900	WARD FIELD CAMP
HC2 NORTH PACIFIC FORESTRY 96		8/29	JEFF ANDERSON	20	C-96	0700 - 1900	WARD FIELD CAMP
HC2 PVT JC OROZCO		9/2	JAMAL KWIATKOWSKI	20	C-1	0700 - 1900	WARD FIELD CAMP
ENG3 LPF 316		8/29	KYLE ARMSTRONG	5	E-1K	0700 - 1900	WARD FIELD CAMP
ENG3 STF 314		8/27	ANDREW KAHANA	5		0700 - 1900	WARD FIELD CAMP
ENG3 PVT TORRES E3		9/2	ADOLFO ESPINO	3	E-218	0700 - 1900	WARD FIELD CAMP
ENG6 PVT C&K WILD 116		9/2	AARON GONZALEZ	3	E-116	0700 - 1900	WARD FIELD CAMP
ENG6 PVT FENIX 117		9/2	SUZANNE FLYNN	3	E-117	0700 - 1900	WARD FIELD CAMP
WTT2 PVT DYNAMITE 168		9/3	MICHAEL RUDOLPH	2	E-168	0700 - 1900	WARD FIELD CAMP
EMPF LOPEZ	X	9/1	MIGUEL LOPEZ	1	O-96	0700 - 1900	WARD FIELD CAMP
EMTF EINEM		9/1	LORI EINEM	1	O-102	0700 - 1900	WARD FIELD CAMP
HC2I SLIDE MOUNTAIN 7		8/30	JOSH HIGGINS	19	C-7		
ENG4 DRAGON FIGHTERS 14		9/3	MIKE SPECHT	3	E-141		
ENG6 SWFS WATER		9/3	ROBERT STIGEN	3	E-112		
ENG5 PVT MONTROSE E-144		9/3	DIEGO ALVAREZ	3	E-144		
ENG5 GLOBAL WILDFIRE 143		9/3	TJ BURKY	3	E-143		

6. Work Assignments:
Construct direct handline where feasible to maximize suppression efforts and limit Corral and Diamond fire spread. Where possible, utilize tactics to minimize the impact to natural, and cultural resources.

7. Special Instructions:
Be aware of retardant avoidance areas, mine shafts and naturally occurring asbestos.

Safety Officer(s) assigned to Branch V: Shaun Davis

8. Communications								
Name	Ch	Function	Rx Freq	Rx Tone	Tx Freq	Tx Tone	Mode	Notes
NIFC C3	1	COMMAND	170.4250	(T3) 131.8	168.0750	(T3) 131.8	A	CAMP 6
NIFC T1	6	TACTICAL	168.0500	(T3) 131.8	168.0500	(T3) 131.8	A	
CALCORD	15	TACTICAL	156.0750	(T6) 156.7	156.0750	(T6) 156.7	A	EMS AIR COORDINATION
A/G TAC	14	A/G TAC	169.4875	0.0	169.4875	0.0	A	
AIRGUARD	16	AIRGUARD	168.6250	0.0	168.6250	(T1) 110.9	A	

9. Prepared by: Name: A. Hudley / J. Roberts / A. Nahas(t) RESL Signature: _____

ICS 204 Date/Time: 8/20/2023 2200 Personnel Count: 85

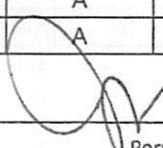
NIMS IAP

CONTROLLED UNCLASSIFIED INFORMATION//BASIC

** CORRECTED **

ASSIGNMENT LIST (ICS 204 WF)

CONTROLLED UNCLASSIFIED INFORMATION//BASIC

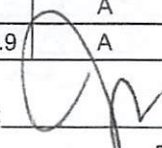
1. Incident Name: SMITH RIVER COMPLEX - SOUTH		2. Operational Period: Date From: 08/21/23 Date To: 08/22/23 Time From: 0700 Time To: 0700				3. Branch V		Division SOUTH STRUCTURE	
4. Operations Personnel:						Page 1 of 1			
Operations Section Chief: Scott Grasmick / Nick Cleary(t) Branch Director: Shaun Craig / Erick D'Amico(t) Division/Group Supervisor: Brett Hildebrand				Operations: Tom Himmelrich / Mike Milkovich Branch Safety: Air Attack:					
5. Resources Assigned:		** Resources Below in Bold are 12 Hour **							
Resource Identifier	ALS	LWD	Leader	Personnel	Request #	Hours	Reporting Location		
HC2 LAVA RIVER C-11		9/1	BERTHA CHAVEZ	20	C-23	0700 - 1900	WARD FIELD CAMP		
HC2 NORTH PACIFIC FORESTRY C-2		8/30	ANDREW KENT	20	C-2	0700 - 1900	WARD FIELD CAMP		
HC TBD						0700 - 1900	WARD FIELD CAMP		
EST1 TBD						0700 - 1900	WARD FIELD CAMP		
EST1 TBD						0700 - 1900	WARD FIELD CAMP		
EST3 XNA 2100C **24hrs**	X	9/1	ERIK MORTIMORE	22	E-88	0700 - 0700	WARD FIELD CAMP		
EST3 OES 0803C **24hrs**		9/1	PETE GONZALEZ	18	E-87	0700 - 0700	WARD FIELD CAMP		
EST3 TBD						0700 - 1900	WARD FIELD CAMP		
EST3 TBD						0700 - 1900	WARD FIELD CAMP		
ENG4 PVT INBOUND 119		9/2	EVAN RUSSELL	3	E-119	0700 - 1900	WARD FIELD CAMP		
ENG4 PVT J3 208		9/2	JOSE ARIZMENDI	3	E-208	0700 - 1900	WARD FIELD CAMP		
ENG4 PVT J3 210		9/2	ANDRE KELLEY	3	E-210	0700 - 1900	WARD FIELD CAMP		
DOZR2 PVT GARMAN CONT → A		9/2	DOUG GRIDER	2	E-172	0700 - 1900	WARD FIELD CAMP		
CHP2 PVT NORTH ZONE 227		9/3	NICK BRANSON	3	E-227	0700 - 1900	WARD FIELD CAMP		
CHP2 PVT NORTH ZONE 228		9/3	NICK BRANSON	3	E-228	0700 - 1900	WARD FIELD CAMP		
ENG-5 FORREST FIRE 248		9/2	AARON VELA	3	E-248				
ENG-4 WILDFIRE SERVICES		9/2	MIKE FOSTER	3	E-219				
ENG-6 Y2 124		9/3	STANLEY VINCENT	3	E-124				
6. Work Assignments: EMPF HARDINIA 9/2 BRANDON HARDINIA 1 0-100 Develop Structure Defense plans. Prep roads and structures in anticipation to defend the Communities along the Highway 199 corridor. ENG-6 TIMBERLINE 140 9/3 JEROME ANTONIO 3 E-140									
7. Special Instructions: Be aware of retardant avoidance areas, mine shafts and naturally occurring asbestos. Safety Officer(s) assigned to Branch V: Shaun Davis									
8. Communications									
Name	Ch	Function	Rx Freq	Rx Tone	Tx Freq	Tx Tone	Mode	Notes	
NIFC C3	1	COMMAND	170.4250	(T3) 131.8	168.0750	(T3) 131.8	A	CAMP 6	
VFIRE 24	12	TACTICAL	154.2725	(T6) 156.7	154.2725	(T6) 156.7	A	SOUTH STRUCTURE PROT	
CALCORD	15	TACTICAL	156.0750	(T6) 156.7	156.0750	(T6) 156.7	A	EMS AIR COORDINATION	
A/G TAC	14	A/G TAC	169.4875	0.0	169.4875	0.0	A		
AIRGUARD	16	AIRGUARD	168.6250	0.0	168.6250	(T1) 110.9	A		
9. Prepared by: Name: A. Hudley / J. Roberts / A. Nahas(t) RESL Signature: 									
ICS 204		Date/Time: 8/20/2023 2200				Personnel Count: 97			

NIMS IAP

CONTROLLED UNCLASSIFIED INFORMATION//BASIC

ASSIGNMENT LIST (ICS 204 WF)

CONTROLLED UNCLASSIFIED INFORMATION//BASIC

1. Incident Name: SMITH RIVER COMPLEX - SOUTH		2. Operational Period: Date From: 08/21/23 Date To: 08/22/23 Time From: 0700 Time To: 0700				3. Branch XX		Division MM	
4. Operations Personnel:						Page 1 of 2		Mike-Mike	
Operations Section Chief: Scott Grasmick / Nick Cleary(t) Branch Director: Joe Tieso Division/Group Supervisor: Ron Oatman					Operations: Tom Himmelrich / Mike Milkovich Branch Safety: Air Attack:				
5. Resources Assigned:		** Resources Below in Bold are 12 Hour **							
Resource Identifier	ALS	LWD	Leader	Personnel	Request #	Hours	Reporting Location		
ENG3 SQF 31		8/30	JOSE RIVIERA	5	E-2	0700 - 1900	WARD FIELD CAMP		
ENG3 GENESEE FIRE 932		8/30	JOSH BOYLES	5	E-1	0700 - 0700	WARD FIELD CAMP		
ENG4 IDAHO TRAILBLAZERS 157		9/1	SCOTT LEFFLER	3	E-157	0700 - 1900	WARD FIELD CAMP		
ENG4 IDAHO TRAILBLAZERS 159		9/1	OSVALDO ARENAS	3	E-159	0700 - 1900	WARD FIELD CAMP		
ENG6 WHISPERING PINES E66		8/30	GABE DONNEY	3	E-3	0700 - 1900	WARD FIELD CAMP		
ENG6 SMITH RIVER 9167		8/28	STEVE WILLIAMS	2		0700 - 1900	WARD FIELD CAMP		
ENG6 SMITH RIVER 9267		8/28	LISA TRIP	2		0700 - 1900	WARD FIELD CAMP		
ENG6 PVT FIRST STRIKE 118		9/2	JEFF PURITT	3	E-118	0700 - 1900	WARD FIELD CAMP		
ENG6 PVT GE FORESTRY 204		9/2	ARMANDO TOBAR	3	E-204	0700 - 1900	WARD FIELD CAMP		
ENG6 PVT KL FARMS 02		9/2	STEPHEN TRAM	3	E-120	0700 - 1900	WARD FIELD CAMP		
ENG6 PVT KL FARMS E-13		9/2	IAN SHELLY	3	E-147	0700 - 1900	WARD FIELD CAMP		
ENG6 PVT IDAHO TB 160		9/2	EDDY GARCIA	3	E-160	0700 - 1900	WARD FIELD CAMP		
ENG6 PVT IMPERIA FORESTRY 203		9/2	LUCIANO GONZALEZ	3	E-203	0700 - 1900	WARD FIELD CAMP		
DOZ2 PVT JUNGWORTH 171 → A		9/2	PETE BROWN	2	E-171	0700 - 1900	WARD FIELD CAMP		
DOZ2 PVT SMOKEY MTN 173 → A		9/2	IKE TOMLINSON	2	E-173	0700 - 1900	WARD FIELD CAMP		
WTT2 GASQUET WT75		8/28	WALTER FRYE	2		0700 - 1900	WARD FIELD CAMP		
WTT2 GASQUET WT76		8/28	GUY LATHAM	2		0700 - 1900	WARD FIELD CAMP		
WTT2 AZ FIRE MEDICAL AUTH 106		8/27	JUSTIN MITTON	2	E-6	0700 - 1900	WARD FIELD CAMP		
6. Work Assignments: Construct direct hand line wherever feasible to maximize suppression efforts to minimize impacts to structures and Highway 199. Prepare and defend structures in the areas of Patrick Creek and Washington Flat. Conduct damage assessment in areas that the fire has impacted.									
7. Special Instructions: Be aware of retardant avoidance areas, mine shafts and naturally occurring asbestos. Safety Officer(s) assigned to Branch XX: Patrick Cockrum and Keith Aggson									
8. Communications									
Name	Ch	Function	Rx Freq	Rx Tone	Tx Freq	Tx Tone	Mode	Notes	
NIFC C3	1	COMMAND	170.4250	(T3) 131.8	168.0750	(T3) 131.8	A	CAMP 6	
NIFC T4	8	TACTICAL	166.7250	(T3) 131.8	166.7250	(T3) 131.8	A		
CALCORD	15	TACTICAL	156.0750	(T6) 156.7	156.0750	(T6) 156.7	A	EMS AIR COORDINATION	
A/G TAC	14	A/G TAC	169.4875	0.0	169.4875	0.0	A		
AIRGUARD	16	AIRGUARD	168.6250	0.0	168.6250	(T1) 110.9	A		
9. Prepared by: Name: A. Hudley / J. Roberts / A. Nahas(t) RESL									
						Signature: 			
ICS 204		Date/Time: 8/20/2023 2200				Personnel Count: 47			

NIMS IAP

CONTROLLED UNCLASSIFIED INFORMATION//BASIC

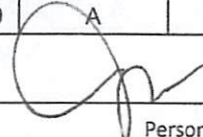
ASSIGNMENT LIST (ICS 204 WF)

CONTROLLED UNCLASSIFIED INFORMATION//BASIC

1. Incident Name: SMITH RIVER COMPLEX - SOUTH		2. Operational Period: Date From: 08/21/23 Date To: 08/22/23 Time From: 0700 Time To: 0700				3. Branch XX		Division MM	
4. Operations Personnel: Operations Section Chief: Scott Grasmick / Nick Cleary(t) Branch Director: Joe Tieso Division/Group Supervisor: Ron Oatman		Operations: Tom Himmelrich / Mike Milkovich Branch Safety: Air Attack:							
5. Resources Assigned:		** Resources Below in Bold are 12 Hour **							
Resource Identifier	ALS	LWD	Leader	Personnel	Request #	Hours	Reporting Location		
WTT2 PVT SJ WATER		9/2	KEELY JACKSON	2	E-161	0700 - 1900	WARD FIELD CAMP		
FMOD MOEN FALLERS 116		9/2	MICHEAL MOEN	2	O-116	0700 - 1900	WARD FIELD CAMP		
FMOD CHARLIE FALLERS 117		9/1	JOSIAH CLAYBORN	2	O-117	0700 - 1900	WARD FIELD CAMP		
FMOD CHARLIE FALLERS 154		9/1	DAN KECK	2	O-154	0700 - 1900	WARD FIELD CAMP		
FMOD TAYLOR FALLING 155		9/2	CHRIS TAYLOR	1	O-155	0700 - 1900	WARD FIELD CAMP		
FMOD GONZALEZ-REDWOOD EMPIRE 151		9/2	JESSE GONZALEZ	2	O-157	0700 - 1900	WARD FIELD CAMP		
TFLD EMM		9/1	KEVIN EMM	1	O-1K	0700 - 1900	WARD FIELD CAMP		
TFLD MIRANDA		9/2	MATT MIRANDA	1	O-173	0700 - 1900	WARD FIELD CAMP		
HEQB(T) NETZ		9/2	PAUL NETZ	1	O-175	0700 - 1900	WARD FIELD CAMP		
FOBS RIVAS		8/30	JEFF RIVAS	1	O-160	0700 - 1900	WARD FIELD CAMP		
FOBS McCREA		8/30	DAVID McCREA	1	O-159	0700 - 1900	WARD FIELD CAMP		
EMPF PETERS	X	9/1	DUSTIN PETERS	1	O-92	0700 - 1900	WARD FIELD CAMP		
EMTF BRISENDINE		9/2	CHAD BRISENDINE	1	O-103	0700 - 1900	WARD FIELD CAMP		
H02 PVT BLUE MOUNTAIN 5		9/2	JUAN ESPINOSA	20	C-5				
H02 WEST COAST 10		9/3	JUAN RAMOS	20	C-10				
ENG3 OUTBACK FIRE 249		9/3	JAROD ANDRA	3	E-249				
ENG0 PIERCE FIRE 158		9/2	JORDEN HOEFUNG	3	E-158				
ENG4 TETON 221		9/3	CASSY JOHNSON	4	E-221				
6. Work Assignments: ENG0 TETON 222 9/3 RYAN TURNER 4 E-222 Construct direct hand line wherever feasible to maximize suppression efforts to minimize impacts to structures and Highway 199. Prepare and defend structures in the areas of Patrick Creek and Washington Flat. Conduct damage assessment in areas that the fire has impacted.									
H01 GERONIMO IHC 8/30 JULIUS HOSETLER 20 C-27									
7. Special Instructions: Be aware of retardant avoidance areas, mine shafts and naturally occurring asbestos. Safety Officer(s) assigned to Branch XX: Patrick Cockrum and Keith Aggson									
8. Communications									
Name	Ch	Function	Rx Freq	Rx Tone	Tx Freq	Tx Tone	Mode	Notes	
NIFC C3	1	COMMAND	170.4250	(T3) 131.8	168.0750	(T3) 131.8	A	CAMP 6	
NIFC T4	8	TACTICAL	166.7250	(T3) 131.8	166.7250	(T3) 131.8	A		
CALCORD	15	TACTICAL	156.0750	(T6) 156.7	156.0750	(T6) 156.7	A	EMS AIR COORDINATION	
A/G TAC	14	A/G TAC	169.4875	0.0	169.4875	0.0	A		
AIRGUARD	16	AIRGUARD	168.6250	0.0	168.6250	(T1) 110.9	A		
9. Prepared by: Name: A. Hudley / J. Roberts / A. Nahas(t) RESL									
						Signature:			
ICS 204		Date/Time: 8/20/2023 2200				Personnel Count: 18			

ASSIGNMENT LIST (ICS 204 WF)

CONTROLLED UNCLASSIFIED INFORMATION//BASIC

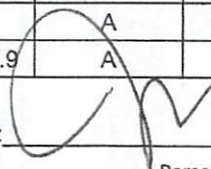
1. Incident Name: SMITH RIVER COMPLEX - SOUTH		2. Operational Period: Date From: 08/21/23 Date To: 08/22/23 Time From: 0700 Time To: 0700				3. Branch XX		Division PP	
4. Operations Personnel:						Page 1 of 1		Papa-Papa	
Operations Section Chief: Scott Grasmick / Nick Cleary(t) Branch Director: Joe Tieso Division/Group Supervisor: Corey Stowe					Operations: Tom Himmelrich / Mike Milkovich Branch Safety: Air Attack:				
5. Resources Assigned:									
** Resources Below in Bold are 12 Hour **									
Resource Identifier	ALS	LWD	Leader	Personnel	Request #	Hours	Reporting Location		
HC2 PVT BLUE MOUNTAIN 5 → PP		9/2	JUAN ESPINOSA	20	C-5	0700 - 1900	WARD FIELD CAMP		
ENG3 SRF E312		8/28	ERIC JOHNSON	5		0700 - 1900	WARD FIELD CAMP		
ENG3 PVT CASCADIA FIRE E-364		9/2	JONATHAN PAUL	3	E-111	0700 - 1900	WARD FIELD CAMP		
ENG6 PVT ABRAHAM 202		9/2	ZAC JONES	3	E-202	0700 - 1900	WARD FIELD CAMP		
ENG6 PVT ROCKY MTN E1		9/2	MICHAEL SAIVILLE	3	E-207	0700 - 1900	WARD FIELD CAMP		
ENG6 PVT RED TRUCK 66		9/2	NICK CARNEY	3	E-156	0700 - 1900	WARD FIELD CAMP		
EMPF STAMEY	X	9/2	SAM STAMEY	1	O-97	0700 - 1900	WARD FIELD CAMP		
EMPF FRITCHLE	X	9/2	NATHAN FRITCHLE	1	O-98	0700 - 1900	WARD FIELD CAMP		
WTT2 SACRAMENTO MTN - 163		9/3	RICHARD DAVIS	2	E-163				
WTT2 SACRAMENTO MTN		9/3	R	2	E-163				
ENG3 HI. COUNTRY 246		9/3	BRIAN BURNETTE	3	E-246				
6. Work Assignments: Monitor fires, develop plans, and wrap Bear Basin Lookout as resources become available.									
7. Special Instructions: Be aware of retardant avoidance areas, mine shafts and naturally occurring asbestos. Safety Officer(s) assigned to Branch V: Shaun Davis Patrick Cockrum and Keith Aggson									
8. Communications									
Name	Ch	Function	Rx Freq	Rx Tone	Tx Freq	Tx Tone	Mode	Notes	
NIFC C3	1	COMMAND	170.4250	(T3) 131.8	168.0750	(T3) 131.8	A	CAMP 6	
NIFC T5	9	TACTICAL	166.7750	(T3) 131.8	166.7750	(T3) 131.8	A		
CALCORD	15	TACTICAL	156.0750	(T6) 156.7	156.0750	(T6) 156.7	A	EMS AIR COORDINATION	
A/G TAC	14	A/G TAC	169.4875	0.0	169.4875	0.0	A		
AIRGUARD	16	AIRGUARD	168.6250	0.0	168.6250	(T1) 110.9	A		
9. Prepared by: Name: A. Hudley / J. Roberts / A. Nahas(t) RESL									
						Signature: 			
ICS 204		Date/Time: 8/20/2023 2200				Personnel Count: 39			

NIMS IAP

CONTROLLED UNCLASSIFIED INFORMATION//BASIC

ASSIGNMENT LIST (ICS 204 WF)

CONTROLLED UNCLASSIFIED INFORMATION//BASIC

1. Incident Name: SMITH RIVER COMPLEX - SOUTH		2. Operational Period: Date From: 08/21/23 Date To: 08/22/23 Time From: 0700 Time To: 0700			3. Branch Division XX VV Page 1 of 1 Victor-Victor			
4. Operations Personnel:								
Operations Section Chief: Scott Grasmick / Nick Cleary(t)			Operations: Tom Himmelrich / Mike Milkovich					
Branch Director: Joe Tieso			Branch Safety:					
Division/Group Supervisor: Michael Willardson			Air Attack:					
5. Resources Assigned:		** Resources Below in Bold are 12 Hour **						
Resource Identifier	ALS	LWD	Leader	Personnel	Request #	Hours	Reporting Location	
ENG3 PVT ALPINE WF E-7		9/2	LEIF LARSON	3	E-220	0700 - 1900	WARD FIELD CAMP	
ENG3 PVT KBM EB ALPINE EB		9/2	STEVEN VIGIL	1	E-121	0700 - 1900	WARD FIELD CAMP	
ENG5 PVT GLOBAL FLEET 143		9/3	ANTHONY BURKEY	3	E-143	0700 - 1900	WARD FIELD CAMP	
ENG5 PVT RATTLESNAKE		9/2	RICHARD OROSCO	3	E-209	0700 - 1900	WARD FIELD CAMP	
ENG6 PVT AMERICAN 114		9/2	KAYLA RIDEOUT	3	E-114	0700 - 1900	WARD FIELD CAMP	
ENG6 PVT AMERICAN 151		9/2	KAYLAR RIDEOUT	3	E-151	0700 - 1900	WARD FIELD CAMP	
ENG6 PVT PACIFIC NW 237		9/3	RAMON IBARRA	3	E-237	0700 - 1900	WARD FIELD CAMP	
ENG6 PVT AAA THUNDER 115		9/2	LOGAN CATES	3	E-115	0700 - 1900	WARD FIELD CAMP	
ENG6 PVT CRIDDLE 206		9/2	PAUL CRIDDLE	3	E-206	0700 - 1900	WARD FIELD CAMP	
WTT2 PVT NATIONAL 166		9/2	LUCAS SHAFFER	2	E-166	0700 - 1900	WARD FIELD CAMP	
HC2 PACIFIC OASIS IS		9/3	ALEX HESS	20	C-15			
EMPF QUINTANAR	X	9/1	ARMEN QUINTANAR	1	0-94			
EMTF WILSON		9/1	TIM WILSON	1	0-101			
6. Work Assignments: Construct direct and indirect hand and dozer lines where feasible to maximize suppression efforts on the Coon Fire.								
7. Special Instructions: Be aware of retardant avoidance areas, mine shafts and naturally occurring asbestos. Safety Officer(s) assigned to Branch V: Shaun Davis Patrick Cockrum and Keith Aggson								
8. Communications								
Name	Ch	Function	Rx Freq	Rx Tone	Tx Freq	Tx Tone	Mode	Notes
NIFC C3	1	COMMAND	170.4250	(T3) 131.8	168.0750	(T3) 131.8	A	CAMP 6
NIFC T6	10	TACTICAL	168.2500	(T3) 131.8	168.2500	(T3) 131.8	A	
CALCORD	15	TACTICAL	156.0750	(T6) 156.7	156.0750	(T6) 156.7	A	EMS AIR COORDINATION
A/G TAC	14	A/G TAC	169.4875	0.0	169.4875	0.0	A	
AIRGUARD	16	AIRGUARD	168.6250	0.0	168.6250	(T1) 110.9	A	
9. Prepared by: Name: A. Hudley / J. Roberts / A. Nahas(t) RESL								
						Signature: 		
ICS 204		Date/Time: 8/20/2023 2200			Personnel Count: 27			

NIMS IAP

CONTROLLED UNCLASSIFIED INFORMATION//BASIC

HEALTH AND SAFETY MESSAGE

Day \ Night Operations August 21, 2023

INCIDENT: **SRF Smith River Complex \ SOUTH**

Day: Saturday Shift: Day \ Night

Major Hazard and Risk:

- **Hazard Tree Safety:** Hazard trees, both dead snags and live green trees, are one of the most common risks encountered on the fireline. All firefighters should frequently survey their work area for potential hazards trees. **This includes your sleeping areas in camp!**
- **Extended Extraction Times:** Be familiar with the medical plan. Develop a plan on how you would get an injured firefighter out timely. Factor in how smoke inversions will reduce the likelihood of utilizing helicopters for extraction.
- **Hazardous Roads:** Narrow roads, steep drop-offs, erratic drivers, and operator fatigue are all prevalent on this and other assignments. If road conditions are an issue, contact your Division Supervisor to report.
- **Lightning:** There is a possibility of lightning \ thunderstorms tomorrow. Ensure you give your crew a good thunderstorm briefing out of the IRPG and establish trigger points to get off the hill.

Narrative: Many families were asked to leave their homes yesterday due to the incident. Those families will have many questions as to whether their homes are still standing. The anxiety may draw them to try and return home. Please be aware not everyone left most likely and could interfere with your mission. Please let them know you are doing everything in your power to ensure that their property remains safe.

Normalization of Deviation

The normalization of deviance occurs whenever someone deviates from the Standard Operating Procedure and results in no negative effect. SOP's, SOG's, Operational directive or whatever you call them are there for a reason. These are based off of many factors that determine the safe practice of operations. If you see a deviation of policy you must be courageous and say something. Not saying something leads to the normalization of that behavior. That normalization can have devastating consequences in the future if its not addressed. The more that a deviation occurs without effect the for normal it becomes until finally that big event occurs. Then we are left looking back and wondering what could have been done to prevent it. The best way to avoid that normalization is to be courageous self-leaders and have the courage to speak up. Empower everyone to have a voice and listen to it!

Exhaustion



Safety Officers:
Rick Bertram 805-471-8076
Patrick Cockrum 916-220-0335
Shaun Davis 805-205-0918
Keith Aggison 805-748-9403

Prepared: 8.20.23



ICS 205 - INCIDENT RADIO COMMUNICATIONS PLAN

CONTROLLED UNCLASSIFIED
INFORMATION//BASIC

1. Incident Name: SMITH RIVER COMPLEX - SOUTH Incident Channels			2. Date/Time Prepared Date: 08/20/2023 Time: 1930			3. Operational Period: Date From: 08/21/23 Time From: 0700 Date To: 08/22/23 Time To: 0700			
4. Communications									
Ch#	Function	Name	Assigned To	Rx Freq	Rx Tone	Tx Freq	Tx Tone	Mode	Notes
1	COMMAND	NIFC C3	ALL DIVS	170.4250	(T3) 131.8	168.0750	(T3) 131.8	A	CAMP 6
2	COMMAND	NIFC C34	ALL DIVS	173.9750	(T3) 131.8	164.8625	(T3) 131.8	A	MONKEY RIDGE
3	COMMAND	NIFC C35	ALL DIVS	173.8625	(T3) 131.8	163.8250	(T3) 131.8	A	SHIP MTN LOOKOUT
4	FOREST	SRF 12	EMER BACKUP	172.3750	0.0	164.1750	(T12) 127.3	A	SRF TONE 12, GORDON MTN
5	FOREST	SRF 4	EMER BACKUP	172.3750	0.0	164.1750	(T4) 136.5	A	SRF TONE 4, SHIP MTN
6	TACTICAL	NIFC T1	D	168.0500	(T3) 131.8	168.0500	(T3) 131.8	A	
7	TACTICAL	NIFC T3	A	168.6000	(T3) 131.8	168.6000	(T3) 131.8	A	
8	TACTICAL	NIFC T4	MM	166.7250	(T3) 131.8	166.7250	(T3) 131.8	A	
9	TACTICAL	NIFC T5	PP	166.7750	(T3) 131.8	166.7750	(T3) 131.8	A	
10	TACTICAL	NIFC T6	SS, VV	168.2500	(T3) 131.8	168.2500	(T3) 131.8	A	
11	TACTICAL	VFIRE 22	B	154.2650	(T6) 156.7	154.2650	(T6) 156.7	A	
12	TACTICAL	VFIRE 24	SOUTH STR. PROT.	154.2725	(T6) 156.7	154.2725	(T6) 156.7	A	SOUTH STRUCTURE PROTECTION
13	A/G CMD	A/G CMD	ALL DIVS	173.8500	0.0	173.8500	0.0	A	BRANCH AND DIVISION USE
14	A/G TAC	A/G TAC	ALL DIVS	169.4875	0.0	169.4875	0.0	A	AIR TO GROUND TACTICAL
15	TACTICAL	CALCORD	ALL DIVS	156.0750	(T6) 156.7	156.0750	(T6) 156.7	A	EMS AIR COORDINATION
16	AIRGUARD	AIRGUARD	ALL DIVS	168.6250	0.0	168.6250	(T1) 110.9	A	EMERGENCY
17									
18									
19									
20	AIRGUARD	AIRGUARD	ALL DIVS	168.6250	0.0	168.6250	(T1) 110.9	A	EMERGENCY
5. Special Instructions									
CURRENT CLONE: SRC818. COMMAND CHANNELS LINKED. FIND WHICH ONE WORKS BEST IN YOUR OPERATIONAL AREA. COMMUNICATIONS PHONE # 760-220-2863									
6. Prepared by (Communications Unit Leader): Name: CHRIS OLIVER COML(t)						Signature: <i>Chris Oliver</i>			
ICS 205 - CONTROLLED UNCLASSIFIED INFORMATION//BASIC					NIMS IAP	Date/Time: 08/20/23		1930	

INCIDENT RADIO COMMUNICATIONS PLAN (ICS 205)

Controlled Unclassified Information//Basic

1. Incident Name:	2. Date/Time Prepared:	3. Operational Period:	
SMITH RIVER COMPLEX NORTH	Date: 08/20/2023 Time: 1920	Date/Time From: 08/21/2023 0700	Date/Time To: 08/22/2023 0700

4. Basic Radio Channel Use:

Zone Group	Ch #	Function	Channel Name/Trunked Radio System Talkgroup	Assignment	RX Freq	RX Tone/NAC	TX Freq	TX Tone/NAC	Mode (A,D, or M)	Remarks
	1	TACTICAL	TAC 1	UNASSIGNED	168.0500	192.8	168.0500	192.8	A	UNASSIGNED
	2	TACTICAL	TAC 2	DIV I	168.2000	192.8	168.2000	192.8	A	
	3	TACTICAL	TAC 3	DIV K	168.6000	192.8	168.6000	192.8	A	
	4	TACTICAL	TAC 4	UNASSIGNED	166.7250	192.8	166.7250	192.8	A	UNASSIGNED
	5	TACTICAL	TAC 5	DIV H	166.7750	192.8	166.7750	192.8	A	
	6	TACTICAL	TAC 6	UNASSIGNED	168.2500	192.8	168.2500	192.8	A	
	7	CMD	BOLAN ADM	ALL DIV	170.5000	67.0	162.6125	186.2	A	
	8	CMD	FIDDLER ADM	ALL DIV	170.5000	67.0	162.6125	179.9	A	
	9	TACTICAL	VTAC 11	STRUCTURE	151.1375	156.7	151.1375	156.7	A	STRUCTURE GROUP
	10	TACTICAL	ODF REDNET	IA	151.3400	156.7	151.3400	156.7	A	
	11	TACTICAL	NIFC T1	DIV D	168.0500	131.8	168.0500	131.8	A	
	12	TACTICAL	NIFC T4	DIV MM	166.7250	131.8	166.7250	131.8	A	
	13	AIR TO GROUND	A/G CMD	ALL DIVS	173.8500	000.0	173.8500	000.0	A	BRANCH AND DIVISION USE
	14	AIR TO GROUND	A/G TAC	ALL DIVS	169.4875	000.0	169.4875	000.0	A	AIR TO GROUND TACTICAL
	15	AIR MEDICAL	VMED 29	ALL DIVS	155.3475	156.7	155.3475	156.7	A	EMS AIR COORDINATION
	16	AIR TO GROUND	AIRGUARD	ALL DIVS	168.6250	000.0	168.6250	110.9	A	EMERGENCY AIRCRAFT CONTACT

5. Special Instructions:

6. Prepared By COML	Name: Bruce Hanna	Signature: /s/ Bruce Hanna
ICS 205	IAP Page	Date/Time: 8/20/2023 1752

LOGISTICS MESSAGE

1. Incident Name:

SMITH RIVER COMPLEX - SOUTH

2. Operational Period: Date From:

8/21/2023

Date To:

8/22/2023

Time From:

0700

Time To:

0700



Breakfast 0600 - 1000

Dinner 1800 - 2200

Lunches, water, Gatorade and ice are available next to the kitchen at the Gasquet basecamp

FINANCE MESSAGE

1. Incident Name: SMITH RIVER COMPLEX - SOUTH	2. Operational Period: Date From: 8/21/2023 Time From: 0700	Date To: 8/22/2023 Time To: 0700
--	--	-------------------------------------

CTR and Shift Tickets:

-If you have the ability to scan a QR code with your smartphone, scan the QR code at the bottom this page to get a fillable CTR or shift tickets. Using a .pdf format, you can scan and fill, then email to your Supervisor on the incident for signature and submission.

-Another option is to complete a paper CTR / Shift Ticket, get it signed by your supervisor on the fire, and take a picture of it.

E-mailing CTRs and Shift Tickets

Subject line: TIME

Email to: 2023.smithrivercomplex.finance@firenet.gov

-This email can be used to submit finance check-in documents too, like manifests, copies of resource orders, AD casual hire forms, receipts, etc. Be sure to include your Resource Order number somewhere in the body of the email.

-You're encouraged to submit time every two days if possible to stay current, and...

REMEMBER, HARD PAPER COPIES OF DOCUMENTS ARE ALWAYS WELCOME TOO!!



TRAINING SPECIALIST MESSAGE

**A Training Specialist is on the incident.
All federal, state, and local government agency
trainees working on position task books will need
to register with the Incident Training Specialist in
order to receive proper credit for your
assignment.**

The TNSP desk is in ICP trailer row.

PLEASE CALL or TEXT if you have any questions.

John LeBlanc
Training Specialist

209.471.7229
john_leblanc@firenet.gov

Team:									
DIVS:			Date:		Time:		Order #		
Orders needed for today, need to be place by 10:00									
Orders needed for tomorrow, need to be place by 15:00									
All crew level orders will be placed through DIVS									
Delivery Location:				DP:		Mode of transportation			
Lat:						Ground Support			
Long:						Helibase			
Date Needed:						Weight:			
Time needed (ASAP is not a time):									
Order received in Supply:			Time:		Name:				
Order shipped through transportation:			Time:		Name:				
Order received by Helibase:			Time:		Name:				
#	Quantity	Item	Pending	Shipped	#	Quantity	Item	Pending	Shipped
1		Meals - Breakfasts			28		Lead Line ea.		
2		Meals - Lunches			29		Cargo Net ea.		
3		Meals - Dinners			30		Fiber Tape ea.		
4		Meals - MRE's # of cases (12/case)			31		Backpack Pump, full/empty		
5		Water, Cubie ea. (5 gals)			32		Sling Blivet, suppression		
6		Gatorade case			33		Folding Tank (1500 gal) ea.		
7		Water, Bottles case			34		Pumpkin (1500, 3000, 6000) ea.		
8		Batteries, AA Box (24 ea. box)			35		Hose 1.5" (100' roll) ea.		
9		Batteries: Specify Type ea.			36		Hose 1." (50' roll) ea.		
10		Flagging: Specify Type roll			37		Hose 3/4" (50' roll) ea.		
11		Tarps/Plastic ea. ft./roll			38		Reducer, 1.5"x1" NFES 0010 ea.		
12		Parachute Cord ft./roll			39		Reducer, 1"x3/4" 0733 ea.		
13		Garbage Bags Box/ea.			40		Gated Y 1.5" 0231 ea.		
14		20 Man First Aid Kit ea.			41		Gated Y 1" 0259 ea.		
15		Coffee Kit w/propane ea.			42		Gated Y 3/4" 0904 ea.		
16		Fuel, Unleaded gal			43		Shut-off Valve 3/4" 0835 ea.		
17		Fuel, Diesel gal			44		In-line T 1.5"x1" 0731 ea.		
18		Fuel, Drip Torch (3:1 mix) gal			45		Nozzle, 1.5" 0137 ea.		
19		Bar Oil qt./gal			46		Nozzle, 1." 0138 ea.		
20		2-Cycle Oil qt.			47		Nozzle, 3/4" 0136 ea.		
21		Drip Torches, Full/Empty ea.			48		Chainsaw Kit ea.		
22		Fusee case			49		Mark 3 Pump Kit w/10gal raw gas & 2 qt. 2 cycle oil		
23		Shovel ea.							
24		Pulaski ea.			50		Lightweight Pump kit w/5 gal raw gas & 1qt 2 cycle oil		
25		Combi ea.							
26		Tools (specify type) ea.			51		Sprinkler Kit ea.		
27		Swivel ea.							

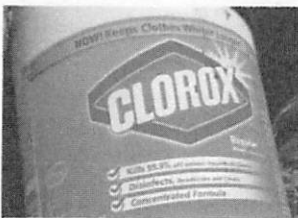
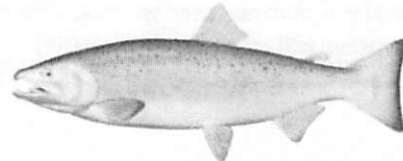
White-Supply Yellow-Helibase Pink-Driver Goldenrod-Communication
 Communication to make 1 copy for Food if needed

Smith River Complex Incident: Resource Advisor Message

Resource Advisors are Available in all Divisions. The goal is to support the mission of containing this wildfire, while minimizing resource damage. Utilize READ/REAFs for cultural and environmental resource concerns.

Fish Screens: Coho Salmon Critical Habitat

Most rivers and streams in this area are considered critical habitat for Threatened Coho salmon. Please ensure that Mark 3 and Engine/Tender suction hoses have the appropriate screen attached. Talk to a READ if you think you need a screen!



Port Orford Cedar root disease

Some local drainages are infected with a root disease that spreads via mud and water. To prevent spreading this disease to uninfected areas, all water tenders and engines will apply bleach to their tanks in a 1 to 1000 ratio (using bleach with 6.0 % Sodium hypochlorite). Talk to a READ if you need some bleach!

Cultural and Heritage Resources:

The area you are working in is rich in cultural and heritage resources which may be encountered while fighting fire. When potential cultural or heritage resource are encountered, that they are not disturbed.

- GPS its location and take a photo, but do not remove or collect anything. Work with your division to notify a READ for recommendations on how to proceed.
- Some cultural resources present hazardous conditions, such as mining shafts. Be attentive to these potential hazards when working around known mining areas or in rocky areas.
- Known resources may be flagged ahead in work areas.
- Finding of cultural resources should not be reported over the radio.
- Coordinate with READs on all dozer operations to minimize impacts to cultural and heritage sites. Limit dozer operations to pre-existing dozer lines and limit widths to the extent possible.



MEDICAL PLAN (ICS 206)

1. Incident Name: SMITH RIVER COMPLEX - SOUTH	2. Operational Period	Date From: 8/21/23	Date To: 8/22/23
		Time From: 0700	Time To: 0700

3. INCIDENT MEDICAL AID STATIONS

MEDICAL AID STATIONS	LOCATION	R.N. & EMT	
		YES	NO
Frontline Medical Support	Base Camp _ Ward Field, Gasquet	X	

4.a. AIR AMBULANCES

NAME	LOCATION	CONTACT	PARAMEDICS	
			YES	NO
Air Ambulance / Type 3	Medford, OR	Smith River Communications	X	
CHP (Daytime only Hoist) / Type 3	Redding, CA	Smith River Communications	X	
Coast Guard (Day/Night Hoist) / Type 3	Humbolt Bay, CA	Smith River Communications		X
Air Ambulance / Type 3	Redding, CA	Smith River Communications	X	
Cal Fire (Hoist)	Kneeland, CA	Smith River Communications	X	

4.b. GROUND AMBULANCES & REMS

NAME	LOCATION	PARAMEDICS	
		YES	NO
Ambulance 1 (Mountain Medics)	Gasquet Ranger District Office (Hwy 199)	X	
Ambulance 2 (Mountain Medics)	DP 90	X	
Ambulance 3 (Emergency Response)	County Rd. 305 (Corral Fire)	X	
REMS 1 (North County F.D.)	Gasquet Ranger District Office (Hwy 199)		X

5. HOSPITALS GPS DATUM - WGS 84

NAME	ADDRESS	TRAVEL TIME		PHONE LAT, LONG	HELIPAD		BURN CENTER	
		AIR	GRND		YES	NO	YES	NO
Sutter Coast Hospital (Level 4 Trauma Center)	800 E. Washington Blvd. Crescent City CA.		25 min.	707-464-8888 Lat: 41 46.454 Long: 124 11.537		X		X
Rogue Regional Medical (Level 2 Trauma Center)	2825 E Barnett Rd. Medford, OR	35 min.	4.5 hrs	541-789-7178 Lat: 42 19.10 Long: 122 49.50	X OR99			X
Mercy Medical Center (Level 2 Trauma Center)	2175 Rosaline Ave. Redding, CA	55 min.	4.5 hrs.	530-225-6000 Lat: 40 34.14 Long: 122 23.97	X 7CA3			X
UC Davis Medical Center (Level 1 Trauma & Burn)	2315 Stockton Blvd. Sacramento, CA	1.5 hr.	7 hrs.	916-734-3636 Lat: 38 33.20 Long: 121 27.28	X 3CLO		X	

6. MEDICAL EMERGENCY PROCEDURES

<p>LINE "MEDICAL EMERGENCY" PLAN:</p> <p>Crew Supervisor to contact Division Supervisor/Operations with:</p> <ul style="list-style-type: none"> • Patient Complaint, Condition and Location via Tactical or Command Frequency. Priority 1/Red & 2/Yellow patients • Triggers Incident within Incident (IWI) <p>Division Supervisor/*POC contacts Smith River Communications:</p> <ul style="list-style-type: none"> • Division Supervisor or *POC will run "Medical-Emergency" on Command Frequency. • Division Supervisor or *POC to use "Medical Plan (ICS 206 WF)" worksheet in the IAP or IRPG. • Communications contacts Medical Unit Leader on the Command Frequency or cell phone (909-559-5196) <p>*POC (Point of Contact)</p>	<p>LINE "NON-EMERGENCY INCIDENT" PLAN:</p> <p>Crew Supervisor to contact Division Supervisor with:</p> <ul style="list-style-type: none"> • Patient Complaint, Condition and Location via Tactical or Command Frequency. Priority 3/Green Patients • Does not trigger Incident within Incident (IWI). <p>Division Supervisor/POC Contacts Smith River Communications</p> <ul style="list-style-type: none"> • Division Supervisor or *POC will run "Non-Emergency Incident" on the Command Frequency. • Division Supervisor or *POC to use "Medical Incident Report" worksheet on back of this page or in IRPG. • Communications contacts Medical Unit Leader on the Command Frequency or Cell Phone (909-559-5196) <p>IN-CAMP – 24 HOUR MEDICAL</p> <p>Contact Smith River Communications with: Patient Complaint, Condition, and Location via phone (760) 220-2863 or Command Frequency</p>
---	--

ICS 206	7. PREPARED BY: (Medical Unit Leader)	8. REVIEWED BY: (Safety Officer)
	Josh Fudge / Mike Lencioni <i>Josh Fudge</i>	Rick Bertram <i>Rick Bertram</i>

MEDICAL PLAN (ICS 206 WF)

Controlled Unclassified Information//Basic

Medical Incident Report					
FOR A NON-EMERGENCY INCIDENT, WORK THROUGH CHAIN OF COMMAND TO REPORT AND TRANSPORT INJURED PERSONNEL AS NECESSARY. FOR A MEDICAL EMERGENCY: IDENTIFY ON-SCENE INCIDENT COMMANDER BY NAME AND POSITION AND ANNOUNCE "MEDICAL EMERGENCY" TO INITIATE RESPONSE FROM IMT COMMUNICATIONS/DISPATCH.					
Use the following items to communicate situation to communications/dispatch.					
1. CONTACT COMMUNICATIONS / DISPATCH (Verify correct frequency prior to starting report) <i>Ex: "Communications, Div. Alpha. Stand-by for Emergency Traffic."</i>					
2. INCIDENT STATUS: Provide incident summary (including number of patients) and command structure. <i>Ex: "Communications, I have a Red priority patient, unconscious, struck by a falling tree. Requesting air ambulance to Forest Road 1 at (Lat/Long.) This will be the Trout Meadow Medical, IC is TFLD Jones. EMT Smith is providing medical care."</i>					
Severity of Emergency / Transport Priority	<input type="checkbox"/> RED / PRIORITY 1 Life or limb threatening injury or illness. Evacuation need is IMMEDIATE <i>Ex: Unconscious, difficulty breathing, bleeding severely, 2^o - 3^o burns more than 4 palm sizes, heat stroke, disoriented.</i> <input type="checkbox"/> YELLOW / PRIORITY 2 Serious Injury or illness. Evacuation may be DELAYED if necessary. <i>Ex: Significant trauma, unable to walk, 2^o - 3^o burns not more than 1-3 palm sizes.</i> <input type="checkbox"/> GREEN / PRIORITY 3 Minor Injury or illness. Non-Emergency transport <i>Ex: Sprains, strains, minor heat-related illness.</i>				
Nature of Injury or Illness & Mechanism of Injury			Brief Summary of Injury or Illness <i>(Ex: Unconscious, Struck by Falling Tree)</i>		
Evacuation Request			Air Ambulance / Short Haul/Hoist Ground Ambulance / Other		
Patient Location			Descriptive Location & Lat. / Long. (WGS84)		
Incident Name			Geographic Name + Medical <i>(Ex: Trout Meadow Medical)</i>		
On-Scene Incident Commander			Name of on-scene IC of Incident within an Incident <i>(Ex: TFLD Jones)</i>		
Patient Care			Name of Care Provider <i>(Ex: EMT Smith)</i>		
3. INITIAL PATIENT ASSESSMENT: Complete this section for each patient as applicable (start with the most severe patient)					
Patient Assessment: See IRPG PAGE 106					
Treatment:					
4. EVACUATION PLAN:					
Evacuation Location (if different): (Descriptive Location (drop point, intersection, etc.) or Lat. / Long.) Patient's ETA to Evacuation Location:					
Helispot / Extraction Site Size and Hazards:					
5. ADDITIONAL RESOURCES / EQUIPMENT NEEDS:					
<i>Example: Paramedic/EMT, crews, immobilization devices, AED, oxygen, trauma bag, IV/fluid(s), splints, rope rescue, wheeled litter, HAZMAT, extrication</i>					
6. COMMUNICATIONS: Identify State Air/Ground EMS Frequencies and Hospital Contacts as applicable					
Function	Channel Name/Number	Receive (RX)	Tone/NAC *	Transmit (TX)	Tone/NAC *
COMMAND					
AIR-TO-GRND					
TACTICAL					
7. CONTINGENCY: Considerations: If primary options fail, what actions can be implemented in conjunction with primary evacuation method? Be thinking ahead..					
8. ADDITIONAL INFORMATION: Updates/Changes, etc.					
REMEMBER: Confirm ETAs of resources ordered. Act according to your level of training. Be Alert. Keep Calm. Think Clearly. Act Decisively.					