



## FINANCE MESSAGE

**Finance Email:** [2023.smithrivercomplex.finance@firenet.gov](mailto:2023.smithrivercomplex.finance@firenet.gov)

**Finance Phones:** Equipment: 971-245-0259 Time: 971-762-8750

**This incident requires electronic documentation.** Please email your time to the Finance email address daily *with the word "NORTH" as the first word in the subject line.* Finance documents required upon check in are:

### Required Documents

Overhead, Agency Crews & Cooperators	Contract Resources
<b>Check-in docs needed:</b> Resource Order, Manifest, Cooperative Agreement, Casual Hire Form w/ECI# (as applicable)	<b>Check-in docs needed:</b> Resource Order, Manifest, Full Contract/Agreement, Certifications ( <i>If required</i> ) Pre-Inspection
<b>Daily:</b> CTRs, Shift Tickets	<b>Daily:</b> CTRs, Shift Tickets, receipts (claims, etc.)
<b>Demob:</b> Signed OF-288; Signed OF-286	<b>Demob:</b> Contractor Evaluations, Shift Tickets, receipt(s) for Addition/Deductions, Post-Inspection, Signed OF-286

Additional Incident Information (to be added to your Shift Ticket or CTR)

Incident Name: Smith River Complex North

Incident Number: CA-SRF-000968

Financial codes:

DOI – QJ6L

Washington DNR 221-ICM

USDA – P5QJ6L (0510)

**THANK YOU!!**

## LOGISTICS

### Lake Selmac ICP

#### Kitchen Hours

- Breakfast 0530 – 0900
- Lunch/Water/ICE available at ICP
- Dinner 1800 – 2100

#### Supply

- Open 0600 – 2100

#### Fuel Tender

- Open 0600 – 1000
- Open 1500 – 2100

**Showers & Laundry – Arriving on Wednesday 08/23**

## CHECK-IN

Please complete the virtual check-in process via the link below. If you have any questions, please email check-in at [2023.smithrivercomplex.checkin@firenet.gov](mailto:2023.smithrivercomplex.checkin@firenet.gov). Please put NORTH in the subject line when emailing check-in.

You are not checked in until you provide the following:

- Red Cards
- Resource Order
- Roster/Manifest



#### **Process for crew/operator personnel swaps:**

Contact Check-In at 208-891-6877 or stop by Lake Selmac ICP and provide the necessary information on personnel changes 48 hours prior to swapping crew members/operators.

<b>INCIDENT OBJECTIVES</b>	<b>1. Incident Name</b> Smith River Complex North	<b>2. Date</b> August 21, 2023	<b>3. Time</b> 2000
<b>4. Operational Period: 08/22/2023 0600-2200</b>			
<p><b>5. General Objectives:</b></p> <p>Implement a FULL suppression strategy for the Smith River Complex:</p> <ul style="list-style-type: none"> <li>• Provide for firefighter and public safety through hazard recognition and application of the risk management process.</li> <li>• Coordinate public information to provide timely and continuous updates to affected agency partners, cooperators, and the public.</li> <li>• Coordinate suppression activities with READs to minimize impacts on natural and cultural resources.</li> <li>• Effectively manage and track costs for all incidents identified within the Smith River Complex.</li> <li>• Close coordination with Region 5/6 fire leadership to ensure effective and efficient management of firefighting resources.</li> <li>• Smith River Complex has two IMTS managing the incident with CA-15 to the south and PNW-13 to the north.</li> <li>• Effectively manage and track costs for all incidents identified within the Smith River Complex.</li> </ul> <p>Smith River Complex North (PNW-13):</p> <ul style="list-style-type: none"> <li>• Protect and minimize the impact to the communities of Elk creek, Illinois valley, Dwight creek, Takelma, and Sun star.</li> <li>• Evaluate control features, develop structure protection group.</li> <li>• Work with Josephine and Curry Counties in Oregon, as well as Del Norte County in California for evacuation levels and future recommendations.</li> <li>• Develop a PACE model, in coordination with CA-15.</li> </ul> <p>Smith River Complex South (CA-15):</p> <ul style="list-style-type: none"> <li>• Minimize impact to the communities and outlying areas near Gasquet, Pioneer, Lower Jones Creek, Washington Flat, Siskiyou Fork, French Hill, Coon Creek, Rock Creek, and Crescent City, as well as water resources, transportation routes, electrical infrastructure, and natural and cultural resources.</li> <li>• East of the Six Rivers National Forest boundary</li> <li>• West of the Six Rivers and Klamath National Forest boundary</li> <li>• North of the 15N01 forest road</li> <li>• South of the Rouge Siskiyou National Forest Boundary</li> </ul>			
<p><b>5a. Incident Requirements</b></p> <ul style="list-style-type: none"> <li>• Provide Agency Administrator updates and briefings on incident status as conditions evolve.</li> <li>• The Smith River Complex is being managed with a full suppression strategy.</li> <li>• Personnel on the incident will implement a risk-based decision-making process, with shared AA alignment.</li> <li>• Firefighting operations will implement tactics that offer the highest probability of success to achieve the strategy of suppressing the fire, preventing unnecessary exposure to ground personal, suppression related damage, and protecting values at risk.</li> <li>• Values include the safety of the public, and firefighters; including private and tribally held timberlands.</li> </ul>			
<p><b>5b. Leaders Intent</b></p> <ul style="list-style-type: none"> <li>• <b>Safety:</b> Firefighter, public, and aviation safety will be addressed through hazard/exposure risk mitigation processes.</li> <li>• <b>Risk Management:</b> Utilize an aligned risk assessment process which mitigates exposure to firefighters through evaluation of conditions during the duration of the incident.</li> <li>• <b>Communication:</b> Keep Agency Administrators and firefighters informed of strategic actions, accomplishments, and challenges.</li> <li>• <b>Operations:</b> Make informed strategic/tactical decisions suppressing the fire in the right geographic locations with the appropriate resources having the highest probability of success.</li> <li>• <b>Stakeholders:</b> Collaborate with local partners, officials, and landowners to provide situational updates pertinent to the fire.</li> <li>• <b>Logistics:</b> Provide support ensuring food, water, and shelter for incident responders.</li> <li>• <b>Human Resources:</b> Ensure that all incident personnel are treated with dignity and respect, while having zero tolerance for harassment, alcohol, or illegal drug use.</li> <li>• <b>Public Information:</b> Provide timely and accurate information through media outlets, trap lines, briefings, community meetings, and social platforms.</li> <li>• <b>Finance:</b> Monitor and communicate incident cost associated with meeting incident objectives.</li> <li>• <b>Planning:</b> Provide incident documentation, resource tracking, and accurate data management.</li> </ul>			
<b>6. Weather Forecast &amp; General Safety Message for Period – See Attached</b>			
<b>7. Attachments (mark if attached)</b>			
<input checked="" type="checkbox"/> Organization List - ICS 203	<input checked="" type="checkbox"/> Weather Forecast	<input checked="" type="checkbox"/> Safety Message	
<input checked="" type="checkbox"/> Div. Assignment Lists - ICS204	<input checked="" type="checkbox"/> Fire Behavior Forecast	<input type="checkbox"/> Medical Emergency Com Plan	
<input checked="" type="checkbox"/> Communications Plan - ICS 205	<input checked="" type="checkbox"/> Incident Map	<input type="checkbox"/>	
<input checked="" type="checkbox"/> Medical Plan - ICS 206	<input checked="" type="checkbox"/> Air Operations - ICS 220	<input type="checkbox"/>	
<b>9. Prepared by</b> Aileen Nichols	<b>9. Approved by (Incident Commander)</b> Eric Riener 		

<b>ORGANIZATION ASSIGNMENT LIST</b>	
1. Incident Name <b>Smith River Complex North</b>	
2. Date <b>August 21, 2023</b>	3. Time <b>1830</b>
4. Operational Period <b>August 22, 2023 0600-2200</b>	
<b>Position</b>	<b>Name</b>
<b>NWIMT 13 LWD 9/02/2023</b>	
5. Incident Commander and Staff	
Incident Commander	<b>Eric Riener</b>
Liaison Officer/Deputy IC	<b>Larry Nickey</b>
Safety Officer	<b>Ray Hershey</b>
Information Officer	<b>Randall Rische</b>
Information Officer Deputy	<b>Eric Waters</b>
Human Resource Specialist	<b>Margaret Dietrich</b>
6. Agency/Organization Representative(s):	
USFS RSF Agency Administrator	<b>Al Watson</b>
USFS RSF River Agency Representative	<b>Scott Blower</b>
USFS RSF Fire Management Liaison	<b>Mike McCann</b>
BLM Agency Administrator	<b>Steven Lydick</b>
BLM Agency Representative	<b>Chris Foster</b>
Oregon Department of Forestry	<b>Ryan Gorden</b>
7. Planning Section	
Plans Chief	<b>Aileen Nichols</b>
Resources Unit	<b>Meredith Butcher</b>
Resources Unit - t	<b>Carolyn Zanotto</b>
Status Check-In	<b>Sandy Hoffman</b>
Status Check-In/Documentation Unit - t	<b>Robert Wandel</b>
Demob Unit	<b>Laura Backlund</b>
Situation Unit - t	<b>Laurie Bergvall</b>
Fire Behavior Analyst	<b>Dean Warner</b>
Incident Meteorologist	<b>Jonathan Chriest</b>
GIS Specialist	<b>Kayla Fermin</b>
GIS Specialist - t	<b>David Hines</b>
Computer Specialist	<b>Dave Johnson</b>
Computer Specialist	<b>Jeff Hixon</b>
Computer Specialist - t	<b>Zak Thomas</b>
8. Logistics Section	
Logistics Chief	<b>Bryan Swanberg</b>
Logistics Chief - t	<b>Cindy Preston</b>
Deputy Logistics Chief	<b>Jim Hammer</b>
Deputy Logistics Chief	<b>Peter Fitzmaurice</b>
Supply Unit Leader - t	<b>Jon Byerly</b>
Ordering Manager - t	<b>Robert Yarnall</b>
Communications Unit Ldr - t	<b>Bruce Hanna</b>
Incident Comm Mgr	<b>Alandra Swords</b>
Com Tech	<b>Kevin Alexander</b>
Food Unit Leader	<b>Pat Young</b>
Facilities Unit Leader	<b>Keith Yonaka</b>
Facilities Unit Leader	<b>Shannon Anderson</b>
Medical Unit Leader	<b>Ben Mecham</b>
Medical Unit Leader	<b>James Brown</b>
Ground Support Unit	<b>Dave Hesburn</b>
Ground Support Unit	<b>Billie Hunter</b>
Receiving/Distribution Mgr - t	<b>Aaron Ritter</b>
Base Camp Manager - t	<b>Justin Schmal</b>

9. Operations Section		
Operations (Field)	<b>John Spencer</b> <b>Jesse Stone - t</b>	
Operations (Planning/ Strategic)	<b>Shawn Jaca</b>	
Operations (Planning)	<b>Tim Crawley-Murphey - t</b>	
<b>a. North</b>		
Branch Director		
Division Supervisor	<b>H</b>	<b>Anna Graves</b> <b>Jothan McGaughey - t</b>
Division Supervisor	<b>I/K</b>	<b>Whitney Machado</b> <b>Silas Baffa - t</b>
Group Supervisor	<b>Structure</b>	<b>Robert Boles</b> <b>Shannon Clark - t</b>
Group Supervisor	<b>Contingency</b>	<b>Randy Anderson</b> <b>Mark Johnson - t</b>
<b>b.</b>		
Branch Director		
Division Supervisor		
Division Supervisor		
<b>c. Air Operations Branch</b>		
Air Operations	<b>Steve Markason</b>	
Air Support Group	<b>Jim Dotson</b>	
Air Support Group - t	<b>Bert Smith - t</b>	
10. Finance Section		
Finance Chief	<b>Veronika Klukas</b>	
Finance Chief - t	<b>Lori Price</b>	
Cost Unit	<b>Paula James</b>	
Time Unit	<b>Angie Chapman</b>	
Time Unit - t	<b>Heather Fitzpatrick</b>	
Proc Unit Leader	<b>Laurette Gaylord</b>	
Proc Unit Leader - t	<b>Eric Soto</b>	
COMPS/CLAIMS		
Incident Cont. Project Insp	<b>Stan Zazado</b>	
Equipment Time Recorder		
PTRC/In-Box Manager - t	<b>Ryker Aldred</b>	
<b>PREPARED BY: Meredith Butcher</b>		



# Fire Weather Forecast



**FORECAST NO: 5**  
**PREDICTION FOR: Tuesday-Wednesday**  
**DATE: August 22<sup>nd</sup>, 2023**  
**FORECAST ISSUED: 1800 August 21<sup>st</sup>, 2023**

**FIRE: Smith River Complex South**  
**UNIT: CA-SRF-968**  
**IMET: James White (240-778-5316)**  
**SIGNED: *James White***

**WEATHER DISCUSSION:** \* Valley elevations = 400ft (Gasquet), Ridgetop elevations = 3500 ft (Cold Springs) \*  
 The remnants of hurricane Hilary will help bring consistent cloud cover and moist, onshore winds today. Under consistent clouds, highs will struggle to rise above the low 70s with RH in the mid-50s. There is a very slight chance of drizzle and wetting rain in the morning but any accumulation will stay below 0.1 inches. Winds will be gentle out of the west. Transient high pressure will help warm and dry conditions on Wednesday with regular, diurnally driven winds returning.

**TODAY:**

**WEATHER:** Cloudy. Heavy smoke in valleys near the fires. Slight chance (10%) of rain in the morning. Total accumulation of a trace to 0.1 inches.

<b>MAX TEMP:</b>	<b>Valleys:</b> 69-74°F (4-7°F ↓)	<b>MIN RH:</b>	<b>Valleys:</b> 53-58% (2-4% ↑)
	<b>Ridgetops:</b> 65-70°F (3-6°F ↓)		<b>Ridgetops:</b> 52-57% (Little Change)
<b>CHC WTG RAIN:</b> 10%	<b>LAL:</b> 1	<b>SFC VIS:</b> 1-2 miles around the fire, better if rain occurs	

**WINDS:** **Valleys:** Morning downslope 1-3 mph afternoon upslope 2-4 mph.  
**(20 feet)** **Ridgetops:** Morning northeast 2-4 mph, northwest 4-8 mph gusts to 15 mph.

**MIXING HEIGHT:** Rising to 5,000 ft by 1400. **TRANSPORT WIND:** Southwest 7-12 mph.

**TONIGHT:**

**WEATHER:** Mostly clear. Strong thermal belt 2500 to 3500 ft.

<b>MIN TEMP:</b>	<b>Valleys:</b> 55-60° (3-6°F ↓)	<b>MAX RH:</b>	<b>Valleys:</b> 90-95% (3-6% ↓)
	<b>Ridgetops:</b> 62-68° (2-4°F ↑)		<b>Ridgetops:</b> 45-55% (10-15% ↓)
<b>CHC WTG RAIN:</b> 0%	<b>LAL:</b> 1	<b>SFC VIS:</b> 1-2 miles, clearer east of the fire early morning	

**WINDS:** **Valleys:** Downslope 2-4 mph.  
**(20 FEET)** **Ridgetops:** Northeast 5-10 mph, infrequent gusts to 15 mph.

**MIXING HEIGHT:** Dropping to 1,000 ft by 0100. **TRANSPORT WIND:** Northeast 10-14 mph.

**WEDNESDAY:**

**WEATHER:** Clear. Heavy smoke in valleys near the fire in the morning.

<b>MAX TEMP:</b>	<b>Valleys:</b> 73-78°F (3-6°F ↑)	<b>MIN RH:</b>	<b>Valleys:</b> 46-51% (4-10% ↓)
	<b>Ridgetops:</b> 71-76°F (4-7°F ↑)		<b>Ridgetops:</b> 33-38% (10-20% ↓)
<b>CHC WTG RAIN:</b> 0%	<b>LAL:</b> 1	<b>SFC VIS:</b> 1-2 miles, better west in the afternoon	

**WINDS:** **Valleys:** Morning downslope 2-4 mph afternoon upslope 3-6 mph.  
**(20 feet)** **Ridgetops:** Morning northeast 4-8 mph, northwest 4-8 mph gusts to 18 mph.

**MIXING HEIGHT:** Rising to 7,000 ft by 1200. **TRANSPORT WIND:** North 6-10 mph.

**EXTENDED OUTLOOK:** Warming and drying will continue into Thursday with temperatures approaching 80 and afternoon RH in the mid-30s. Winds will remain gentle and terrain driven, though high pressure will slightly enhance regular overnight northeast winds with poor overnight recoveries in the upper 30s. A prolonged cool and moist period is expected to build in this weekend into next week.

—————→  
 Nearby Weather Observations



## Fire Behavior Forecast #2

**Incident:** Smith River Cmplx North CA-SRF-000968

**TYPE OF FIRE:** Wildfire

**DATE/TIME ISSUED:** 8/21/23 1900

**OPERATIONAL PERIOD:** 8/22/23 Day Shift

**FBAN:** Dean Warner

**Signed:** 

**Weather Summary** - See Incident Weather Forecast:  
Moderated weather will keep temps low and RH high.

### Fuels

**Shrub:** Shrubs and brush are 1 to 3 feet high with a low to moderate load of grass intermixed with sparse stems of conifer. Manzanita brush and other live fuels are drought stressed from below normal amounts of spring precipitation. These live fuels are cured enough to contribute to fire spread. Given the typical exposed nature of this fuel, eye level winds in excess of 6 mph can cause rates of spread to exceed 8 chains per hour. Without wind these fuels will typically exhibit low rates of spread.

**Timber litter and shrub:** Primary carrier of the fire is understory brush with timber and leaf litter. Expect slow rates of spread under moderated weather conditions. Canopy closure will shelter fuels from wind. Eye level winds in excess of 6 mph will typically allow fire to reach the canopy and result in torching. The drought stressed brush will contribute to fire spread. Areas of abundant dead fuel loading will exasperate fuel spread.

**OUTPUTS:**

Expected Fine Dead Fuel Moisture: 5%-8%

POI: 60%-70%

Active Fire Behavior  
Max. spot distance: ¼ mile  
Haines Index: 3  
LAL: 1  
ERC: 65=95 percentile  
Camp Lookout RAWs

Fuel/Type Model	Maximum Rate of Spread	Maximum Flame Length
Shrub	8 ch/hr	2 ft.
Timber litter shrub	2 ch/hr	1 ft.

Expected Fire Behavior: Based on the Warmest, Driest, Windiest Conditions Forecasted

### General/Potential:

Moderated weather conditions will keep fire activity at the surface. Limited torching possible but only in areas with abundant ladder fuels. Fuel dryness will maintain fire spread.

**Hotel:** Fire will continue backing into the North Fork Diamond Creek Drainage. Expect fire to continue spreading into the Diamond Creek drainage between ridge lines. The 4022 road up to 112 road is not expected to be impacted today, same is true for the 112 road.

**India:** Fire will continue backing off of Monkey Creek Ridge towards the Hwy 199 corridor. Conditions will be favorable for tactical firing operations. Expect a slow progression of fire spread given light forecasted winds.

**Kilo:** Fire will continue to progress north on the east side of Hwy 199, watch for fast uphill runs as the fire moves through small drainages and creates slope reversals.

### Air Operations

Smoke and morning inversion will delay aviation until 1100 hours.

### Safety

Watch Out Situation 11 is emphasized today: **Unburned fuel between you and the fire.** We have a great deal of this situation in all divisions. The patchy fuels and steep terrain can cause unexpected rapid developments in fire behavior. Remain alert for unanticipated runs through these fuels toward your location.

<b>DIVISION ASSIGNMENT LIST</b>			1. Branch		2. Division <b>H</b>	
3. Incident Name <b>Smith River Complex North</b>			4. Operational Period Date: <b>08/22/2023</b> Time: <b>0600-2200</b>			
5. Operations Personnel						
Operations Chief		<b>John Spencer Jesse Stone - t</b>		Division Supervisor		<b>Anna Graves Jothan McGaughey - t</b>
Safety Officer		<b>Ray Hershey</b>		Air Attack		
6. Resources Assigned this Period						
	Strike Team/Task Force/Resource Designator	Leader	# Persons	LWD	Drop Off PT./Time	Pick Up PT./Time
<b>1</b>	<b>E-50061 ENG6 3Bs</b>	<b>Jonathan Toebben</b>	<b>3</b>	<b>8/31</b>	<b>Lake Selmac ICP</b>	<b>Lake Selmac ICP</b>
<b>2</b>	<b>E-50062 ENG6 Lone Pine</b>	<b>Katy Adams</b>	<b>3</b>	<b>8/31</b>	<b>Lake Selmac ICP</b>	<b>Lake Selmac ICP</b>
<b>3</b>						
<b>4</b>						
<b>5</b>						
<b>6</b>						
<b>7</b>						
<b>8</b>						
<b>9</b>						
<b>10</b>						
<b>11</b>						
<b>12</b>						
<b>13</b>						
<b>14</b>						
<b>15</b>						
<b>16</b>						
<b>17</b>						
<b>18</b>	<b>Pacific Power Task Force</b>	<b>Anna Arritola</b>	<b>12</b>		<b>No meals</b>	
<b>19</b>						
<b>20</b>						
<b>21</b>	<b>O-68 Medic 2</b>	<b>Erica Jackson</b>	<b>1</b>		<b>Lake Selmac</b>	<b>Lake Selmac</b>
<b>22</b>						
		<b>Meal count</b>	<b>7</b>			
7. Control Operations: <b>Task:</b> Identify opportunities for alternate indirect line. Establish drop points and helispots. Establish water sources. Wrap power poles from fire edge to the north. <b>Purpose:</b> Minimize impacts to communities and infrastructure to the north. <b>End state:</b> Impacts have been minimized to communities and infrastructure to the north.						
8. Special Instructions: *						
9. Division/Group Communication Summary <b>See Communications Plan</b>						
Prepared by (Resource Unit Ldr) <i>Meredith Butcher/Carolyn Zanotto</i>		Approved by (Planning Sect. Ch.) <i>Aileen Nichols</i>		Date <b>08/21/2023</b>	Time <b>2000</b>	

<b>DIVISION ASSIGNMENT LIST</b>				1. Branch		2. Division <b>I/K</b>	
3. Incident Name <b>Smith River Complex North</b>				4. Operational Period Date: <b>08/22/2023</b> Time: <b>0600-2200</b>			
5. Operations Personnel							
Operations Chief		<b>John Spencer Jesse Stone - t</b>		Division Supervisor		<b>Whitney Machado Silas Baffa - t</b>	
Safety Officer		<b>Ray Hershey</b>		Air Attack			
6. Resources Assigned this Period							
Strike Team/Task Force/Resource Designator		Leader	# Persons	LWD	Drop Off PT./Time		Pick Up PT./Time
<b>1</b>	<b>O-50015 TFLD</b>	<b>Jyota Smith-Howard</b>	<b>1</b>	<b>9/3</b>	<b>Lake Selmac ICP</b>		<b>Lake Selmac ICP</b>
<b>2</b>	<b>O-50014 HEQB</b>	<b>Clint Foster</b>	<b>1</b>	<b>9/3</b>	<b>Lake Selmac ICP</b>		<b>Lake Selmac ICP</b>
<b>3</b>							
<b>4</b>	<b>O-50045 FMOD Toms Timber LLC</b>	<b>Tyler Pacheco</b>	<b>2</b>	<b>9/2</b>	<b>Lake Selmac ICP</b>		<b>Lake Selmac ICP</b>
<b>5</b>							
<b>6</b>	<b>CRW1 Redmond IHC</b>	<b>Dave Varon</b>	<b>22</b>	<b>8/31</b>	<b>Lake Selmac ICP</b>		<b>Lake Selmac ICP</b>
<b>7</b>	<b>CRW1 Palomar IHC</b>	<b>Jose Ortega</b>	<b>20</b>	<b>8/29</b>	<b>Lake Selmac ICP</b>		<b>Lake Selmac ICP</b>
<b>8</b>							
<b>9</b>	<b>C-50013 CR2I Pacific Oasis 14A</b>	<b>Jason Maza</b>	<b>20</b>	<b>8/31</b>	<b>Lake Selmac ICP</b>		<b>Lake Selmac ICP</b>
<b>10</b>							
<b>11</b>	<b>E-50065 ENG6 GE Forestry 1</b>	<b>Edgar Aguilar</b>	<b>3</b>	<b>8/31</b>	<b>Lake Selmac ICP</b>		<b>Lake Selmac ICP</b>
<b>12</b>	<b>E-42 ENG6 Fuego 6</b>	<b>Chase Workman</b>	<b>3</b>	<b>9/1</b>	<b>Lake Selmac ICP</b>		<b>Lake Selmac ICP</b>
<b>13</b>	<b>E-50058 ENG6 Lomakatski 65</b>	<b>Antonio Lopez</b>	<b>3</b>	<b>8/31</b>	<b>Lake Selmac ICP</b>		<b>Lake Selmac ICP</b>
<b>14</b>	<b>E-50059 ENG6 Green Mtn 88</b>	<b>Scott Brennan</b>	<b>3</b>	<b>8/31</b>	<b>Lake Selmac ICP</b>		<b>Lake Selmac ICP</b>
<b>15</b>	<b>E-50060 ENG6 Sundance 5</b>	<b>Emilio Garcia</b>	<b>3</b>	<b>8/31</b>	<b>Lake Selmac ICP</b>		<b>Lake Selmac ICP</b>
<b>16</b>							
<b>17</b>	<b>E-39 WTS2 Sugden 1</b>	<b>Tom Sugden</b>	<b>1</b>	<b>8/31</b>	<b>Lake Selmac ICP</b>		<b>Lake Selmac ICP</b>
<b>18</b>	<b>E-50056 WTS2 Autobrot 1</b>	<b>Dakota Williams</b>	<b>2</b>	<b>8/31</b>	<b>Lake Selmac ICP</b>		<b>Lake Selmac ICP</b>
<b>19</b>	<b>E-40001 MBM2 Morris Forestry LLC</b>	<b>Todd Donahue</b>	<b>2</b>	<b>9/3</b>	<b>Lake Selmac ICP</b>		<b>Lake Selmac ICP</b>
<b>20</b>	<b>E-40002 DZR2 Table Mtn. Forestry</b>	<b>Mitchell West</b>	<b>2</b>		<b>Lake Selmac ICP</b>		<b>Lake Selmac ICP</b>
<b>21</b>	<b>O-50013 Medic 1</b>	<b>Joel Bower</b>	<b>1</b>		<b>Lake Selmac ICP</b>		<b>Lake Selmac ICP</b>
<b>22</b>	<b>O-50031 EMT 99</b>	<b>Jessica Kiel</b>	<b>1</b>		<b>Lake Selmac ICP</b>		<b>Lake Selmac ICP</b>
		<b>Meal count</b>	<b>90</b>				
7. Control Operations: <b>Task:</b> Construct fireline along Monkey Ridge down to Hwy 199. Scout and identify contingency lines east of Hwy 199. Tie fireline into Hwy 199 and establish contingency lines. <b>Purpose:</b> Keep fire south of Elk Valley and Illinois Valley communities. <b>End state:</b> Impacts have been minimized to communities and infrastructure.							
8. Special Instructions:							
9. Division/Group Communication Summary <b>See Communications Plan</b>							
Prepared by (Resource Unit Ldr) <i>Meredith Butcher/Carolyn Zanotto</i>			Approved by (Planning Sect. Ch.) <i>Aileen Nichols</i>			Date <b>08/21/2023</b>	Time <b>2000</b>



<b>DIVISION ASSIGNMENT LIST</b>			1. Branch		2. Division <b>Structure North</b>	
3. Incident Name <b>Smith River Complex North</b>			4. Operational Period Date: <b>08/22/2023</b> Time: <b>0600-2200</b>			
5. Operations Personnel						
Operations Chief		<b>John Spencer Jesse Stone - t</b>		Division Supervisor		<b>Robert Boles Shannon Clark - t</b>
Safety Officer		<b>Ray Hershey</b>		Air Attack		
6. Resources Assigned this Period						
	Strike Team/Task Force/Resource Designator	Leader	# Persons	LWD	Drop Off PT./Time	Pick Up PT./Time
1	<b>**TASK FORCE 1**</b>					
2	<b>O-559 TFLD</b>	<b>Mike Lambert</b>	<b>1</b>		<b>Lake Selmac ICP</b>	<b>Lake Selmac ICP</b>
3	<b>C-91 CRW2 Pacific Oasis</b>		<b>20</b>	<b>9/1</b>	<b>Lake Selmac ICP</b>	<b>Lake Selmac ICP</b>
4	<b>E-408 ENG4</b>		<b>3</b>	<b>9/1</b>	<b>Lake Selmac ICP</b>	<b>Lake Selmac ICP</b>
5	<b>E-403 ENG6</b>		<b>3</b>	<b>9/1</b>	<b>Lake Selmac ICP</b>	<b>Lake Selmac ICP</b>
6	<b>E-4000 WTS2 Darrah Logging 4</b>	<b>Bob Cretton</b>	<b>1</b>	<b>8/29</b>	<b>Lake Selmac ICP</b>	<b>Lake Selmac ICP</b>
7						
8						
9						
10						
11						
12						
13						
14						
15						
16						
17						
18						
19						
20						
21						
22						
		<b>Meal count</b>	<b>28</b>			
7. Control Operations: <b>Task:</b> Preparation for point protection. <b>Purpose:</b> Minimize fire impacts to private residences in the fire area. <b>End state:</b> Area to be protected is prepped and secured.						
8. Special Instructions:						
9. Division/Group Communication Summary <b>See Communications Plan</b>						
Prepared by (Resource Unit Ldr) <i>Meredith Butcher/Carolyn Zanotto</i>		Approved by (Planning Sect. Ch.) <i>Aileen Nichols</i>		Date <b>08/21/2023</b>	Time <b>2000</b>	

<b>DIVISION ASSIGNMENT LIST</b>			1. Branch		2. Division <b>Contingency North</b>	
3. Incident Name <b>Smith River Complex North</b>			4. Operational Period Date: <b>08/22/2023</b> Time: <b>0600-2200</b>			
5. Operations Personnel						
Operations Chief		<b>John Spencer Jesse Stone - t</b>		Division Supervisor		<b>Randy Anderson Mark Johnson - t</b>
Safety Officer		<b>Ray Hershey</b>		Air Attack		
6. Resources Assigned this Period						
Strike Team/Task Force/Resource Designator		Leader	# Persons	LWD	Drop Off PT./Time	Pick Up PT./Time
1						
2						
3						
4						
5						
6						
7						
8						
9						
10						
11						
12						
13						
14						
15						
16						
17						
18						
19						
20						
21						
22						
		<b>Meal count</b>				
7. Control Operations: <b>Task:</b> Scout for alternate lines. <b>Purpose:</b> <b>End state:</b>						
8. Special Instructions:						
9. Division/Group Communication Summary <b>See Communications Plan</b>						
Prepared by (Resource Unit Ldr) <i>Meredith Butcher/Carolyn Zanotto</i>			Approved by (Planning Sect. Ch.) <i>Aileen Nichols</i>		Date <b>08/21/2023</b>	Time <b>2000</b>

AIR OPERATIONS SUMMARY ICS-220										Time Prepared		Date Prepared		Prepared By			
Incident Name / Number		Sunrise	Startup	Cutoff	Sunset	Shutdown		Operational Period - Date		Operational Period - Time		John Crofty/Steve Markason					
SMITH RIVER COMPLEX - CA-SRF-000958		6:29	6:59	19:38	20:08	20:38		Monday, August 21, 2023		Tuesday August 22, 2023		0700-2100					
<b>General Remarks, Safety Notes, Hazards, Air Operations Special Equipment, etc.</b> TRACK ALL DIPSITE LOCATIONS / NUMBER OF DIPS / GALLONS TAKEN. TRACK ALL DROP LOCATIONS / NUMBER OF DROPS / GALLONS DROPPED ALL GPS DATA TO BE COLLECTED IN <u>DEGREES, MINUTES, DECIMAL MINUTES</u> FORMAT. <i>AVOID Aerial Application of Retardant / Foam / Agent within 300' of Waterways, Bodies of Water, etc.</i> <i>If Retardant / Foam / Agent is Dropped Within These Areas Immediately Notify the AOB/D and Provide the Following Information: Lat / Long, Estimated Number of Gallons and a Map Detailing The Area. Watch for Powerlines. Caution when operating in non-TFR areas.</i>										<b>Helibase Information</b> Name Gasquet Latitude 41 50.667 Longitude 123 59.455  Name Cave Junction Latitude 42 06.250 Longitude 123 40.916 (use page 2 if needed)		<b>TFR Information</b> Request # Rectangle NM Altitude: 8,000 MSL Multi Lat Multi Long Centerpoint: 3/7752 NOTAMS: Frequency 126.0750 <a href="http://tfr.faa.gov/tfr2/list.html">http://tfr.faa.gov/tfr2/list.html</a>		<b>Rescue Ship Information</b> Day Hoist Name CHP H14 Phone Astar B3 Make/Model Redding Location Bell 212 Benton SAC METRO 1		<b>Request Procedure for These Aircraft:</b> See Below for OR Aircraft <b>See Medical Plan For Additional Info</b>	
FAA #	Type	Make/Model	Helibase	Avail	Start	Remarks	FAA #	Type	Make/Model	Helibase	Avail	Start	Remarks				
HT 16FH	1	UH-60	Cave	0800	0830	LL BUCKET											
HB 534VG	1	UH-60	Cave	0800	0830	LL BUCKET											
HB 391SH	1	UH-60	Cave	0800	0830	LL BUCKET											
HB 699RH	1	KMAX	Cave	0800	0830	LL BUCKET											
H-527	2	Bell 212	Cave	0800	0830	LL BUCKET											
H-8BH	3	Bell 407	Cave	0800	0830	HICO											
H-2AE	3	AS350B3E	Cave	ETA	1230	Pax/Recon/PSD											
20695	1	HH-60M	RBG			<b>OR Nat'l Guad Hoist - Roseburg</b>											
H-902	2	MH-65	Humboldt			Coast Guard											
	2	UH1	Kneeland			Cal Fire											
<b>FIXED WING ( Use Page 2 if Needed )</b>																	
FAA #	Type	Make/Model	Base	Avail	Start	Remarks	FAA #	Type	Make/Model	Base	Avail	Start	Remarks				
N-7MZ	1	C-501	RDD	0800	0830	ATGS											

Your Sunrise and Sunset info has not been updated for the current Op period

**HELICOPTERS ( Use page 2 if Needed )**

# INCIDENT RADIO COMMUNICATIONS PLAN (ICS 205)

## Controlled Unclassified Information//Basic

1. Incident Name:		2. Date/Time Prepared:		3. Operational Period:						
SMITH RIVER COMPLEX NORTH		Date: 08/21/2023 Time: 1920		Date/Time From: 08/22/2023 0600 Date/Time To: 08/22/2023 2200						
<b>4. Basic Radio Channel Use:</b>										
Zone Group	Ch #	Function	Channel Name/Trunked Radio System Talkgroup	Assignment	RX Freq	RX Tone/NAC	TX Freq	TX Tone/NAC	Mode (A, D, or M)	Remarks
	1	TACTICAL	TAC 1	UNASSIGNED	168.0500	192.8	168.0500	192.8	A	UNASSIGNED
	2	TACTICAL	TAC 2	DIV I	168.2000	192.8	168.2000	192.8	A	
	3	TACTICAL	TAC 3	DIV K	168.6000	192.8	168.6000	192.8	A	
	4	TACTICAL	TAC 4	UNASSIGNED	166.7250	192.8	166.7250	192.8	A	UNASSIGNED
	5	TACTICAL	TAC 5	DIV H	166.7750	192.8	166.7750	192.8	A	
	6	TACTICAL	TAC 6	UNASSIGNED	168.2500	192.8	168.2500	192.8	A	
	7	CMD	BOLAN ADM	ALL DIV	170.5000	67.0	162.6125	186.2	A	
	8	CMD	FIDDLER ADM	ALL DIV	170.5000	67.0	162.6125	179.9	A	
	9	TACTICAL	VTAC 11	STRUCTURE	151.1375	156.7	151.1375	156.7	A	STRUCTURE GROUP
	10	TACTICAL	ODF REDNET	IA	151.3400	156.7	151.3400	156.7	A	
	11	TACTICAL	NIFC T1	DIV D	168.0500	131.8	168.0500	131.8	A	SRC South
	12	TACTICAL	NIFC T4	DIV MM	166.7250	131.8	166.7250	131.8	A	SRC South
	13	AIR TO GROUND	A/G CMD	ALL DIVS	173.8500	000.0	173.8500	000.0	A	BRANCH AND DIVISION USE
	14	AIR TO GROUND	A/G TAC	ALL DIVS	169.4875	000.0	169.4875	000.0	A	AIR TO GROUND TACTICAL
	15	AIR MEDICAL	VMED 29	ALL DIVS	155.3475	156.7	155.3475	156.7	A	EMS AIR COORDINATION
	16	AIR TO GROUND	AIRGUARD	ALL DIVS	168.6250	000.0	168.6250	110.9	A	EMERGENCY AIRCRAFT CONTACT
<b>5. Special Instructions:</b>										
<b>6. Prepared By COML</b>										
Name: Bruce Hanna				Signature: /s/ Bruce Hanna						
<b>ICS 205</b>										
IAP Page				Date/Time: 8/20/2023 1752						

# INCIDENT RADIO COMMUNICATIONS PLAN (ICS 205)

## Controlled Unclassified Information//Basic

<b>1. Incident Name:</b>	<b>2. Date/Time Prepared:</b>	<b>3. Operational Period:</b>
SMITH RIVER COMPLEX NORTH INITIAL ATTACK ZONE	Date: 08/21/2023 Time: 20:00	Date/Time From: 08/22/2023 0600 Date/Time To: 08/22/2023 2200

**4. Basic Radio Channel Use:**

Zone Group	Ch #	Function	Channel Name/Trunked Radio System Talkgroup	Assignment	RX Freq	RX Tone/NAC	TX Freq	TX Tone/NAC	Mode (A, D, or M)	Remarks
IA	1	CMD	MONKEY	IA	172.3750	000.0	164.1750	110.9	A	6 RIVERS MONKEY RIDGE
IA	2	CMD	WILD RVR	IA	171.3875	67.0	164.9625	67.0	A	WILD RIVERS
IA	3	CMD	GOLD BCH	IA	170.3750	67.0	164.1250	67.0	A	GOLD BEACH
IA	4	CMD	ODF SEXTON	IA	151.1450	000.0	159.2850	179.9	A	ODF SEXTON
IA	5	CMD	ODF GRAY BK	IA	151.1450	000.0	159.2850	151.4	A	ODF GREY BACK
IA	6	TAC	ODF RED	IA	151.3400	000.0	151.3400	156.7	A	ODF RED
IA	7	A/G	ODF WHITE	IA	151.3100	000.0	151.3100	156.7	A	ODF WHITE A/G
IA	8	TAC	ODF RVT	IA	159.2400	000.0	159.2400	156.7	A	ODF RVT
IA	9	A/G	FS A/G51	IA	168.3125	000.0	168.3125	000.0	A	A/G 51
IA	10	A/G	FS A/G62	IA	169.3625	000.0	169.3625	000.0	A	A/G 62
IA	11	CMD	BOLAN ADM	IA	170.5000	167.0	162.6125	186.2	A	
IA	12	CMD	FIDDLER	IA	170.5000	167.0	162.6125	179.9	A	
IA	13	A/G	A/G CMD	IA	173.8500	000.0	173.8500	000.0	A	
IA	14	A/G	A/G TAC	IA	169.4875	000.0	169.4875	000.0	A	
IA	15	A/G	VMED 29	IA	155.3475	156.7	155.3475	156.7	A	EMS AIR COORDINATION
IA	16	A/G	CAL CORD	IA	156.0750	156.7	156.0750	156.7	A	EMS AIR CORD

**5. Special Instructions:**

<b>6. Prepared By</b>	Name: Bruce Hanna	Signature: /s/ Bruce Hanna
ICS 205	(Communications Unit Leader)	Date/Time:

# ICS 205 - INCIDENT RADIO COMMUNICATIONS PLAN

CONTROLLED UNCLASSIFIED  
INFORMATION//BASIC

<b>1. Incident Name:</b> SMITH RIVER COMPLEX - SOUTH Incident Channels		<b>2. Date/Time Prepared</b> Date: 08/21/2023 Time: 1930		<b>3. Operational Period:</b> Date From: 08/22/23 Time From: 0700		<b>Date To:</b> 08/23/23 <b>Time To:</b> 0700			
<b>4. Communications</b>									
Ch#	Function	Name	Assigned To	Rx Freq	Rx Tone	Tx Freq	Tx Tone	Mode	Notes
1	COMMAND	NIFC C3	ALL DIVS	170.4250	(T3) 131.8	168.0750	(T3) 131.8	A	CAMP 6
2	COMMAND	NIFC C34	ALL DIVS	173.9750	(T3) 131.8	164.8625	(T3) 131.8	A	MONKEY RIDGE
3	COMMAND	NIFC C35	ALL DIVS	173.8625	(T3) 131.8	163.8250	(T3) 131.8	A	SHIP MTN LOOKOUT
4	FOREST	SRF 12	EMER BACKUP	172.3750	0.0	164.1750	(T12) 127.3	A	SRF TONE 12, GORDON MTN
5	FOREST	SRF 4	EMER BACKUP	172.3750	0.0	164.1750	(T4) 136.5	A	SRF TONE 4, SHIP MTN
6	TACTICAL	NIFC T1	D	168.0500	(T3) 131.8	168.0500	(T3) 131.8	A	
7	TACTICAL	NIFC T3	A	168.6000	(T3) 131.8	168.6000	(T3) 131.8	A	
8	TACTICAL	NIFC T4	MM	166.7250	(T3) 131.8	166.7250	(T3) 131.8	A	
9	TACTICAL	NIFC T5	PP	166.7750	(T3) 131.8	166.7750	(T3) 131.8	A	
10	TACTICAL	NIFC T6	SS, VV	168.2500	(T3) 131.8	168.2500	(T3) 131.8	A	
11	TACTICAL	VFIRE 22	B	154.2650	(T6) 156.7	154.2650	(T6) 156.7	A	
12	TACTICAL	VFIRE 24	SOUTH STRUCTURE	154.2725	(T6) 156.7	154.2725	(T6) 156.7	A	SOUTH STRUCTURE PROTECTION
13	A/G CMD	A/G CMD	ALL DIVS	173.8500	0.0	173.8500	0.0	A	BRANCH AND DIVISION USE
14	A/G TAC	A/G TAC	ALL DIVS	169.4875	0.0	169.4875	0.0	A	AIR TO GROUND TACTICAL
15	TACTICAL	CALCORD	ALL DIVS	156.0750	(T6) 156.7	156.0750	(T6) 156.7	A	EMS AIR COORDINATION
16	AIRGUARD	AIRGUARD	ALL DIVS	168.6250	0.0	168.6250	(T1) 110.9	A	EMERGENCY
17									
18									
19									
20	AIRGUARD	AIRGUARD	ALL DIVS	168.6250	0.0	168.6250	(T1) 110.9	A	EMERGENCY
<b>5. Special Instructions</b>									
<b>CURRENT CLONE: SRC818. COMMAND CHANNELS LINKED. FIND WHICH ONE WORKS BEST IN YOUR OPERATIONAL AREA. COMMUNICATIONS PHONE # 760-220-2863</b>									
<b>6. Prepared by (Communications Unit Leader):</b> Name: CHRIS OLIVER COML(t)				Signature: <i>Chris Oliver</i>				Date/Time: 08/21/23	
ICS 205 - CONTROLLED UNCLASSIFIED INFORMATION//BASIC				NIMS IAP				1930	

Smith River Complex North  
August 22, 2023

### **Drug and Alcohol Guidelines**



The Incident Command Team and host agencies are committed to providing a drug and alcohol free work environment for all incident members.

There is zero-tolerance for drug or alcohol violations.

If drugs or alcohol use are observed, please report these incidents immediately to your supervisor or the Human Resource Specialist.

### **Training**

If you are ordered as a trainee you can bring me your task book along with your red card or email it to [Team13trsp@outlook.com](mailto:Team13trsp@outlook.com) and I will enter you into the training database for the fire. If you have questions feel free to call, text, email, or drop in.

Have a productive and safe day!

**Margaret Dietrich, Human Resource Specialist/Training Specialist**  
**360-701-3154, [team13trsp@outlook.com](mailto:team13trsp@outlook.com)**

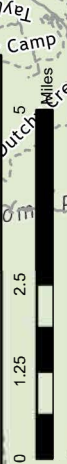
*Thought for the day: Human beings can alter their lives by altering their attitudes.*  
*--Norman Vincent Peale*

# Transportation

Smith River Complex North

CA-SRF-000968

8/21/2023 24hr

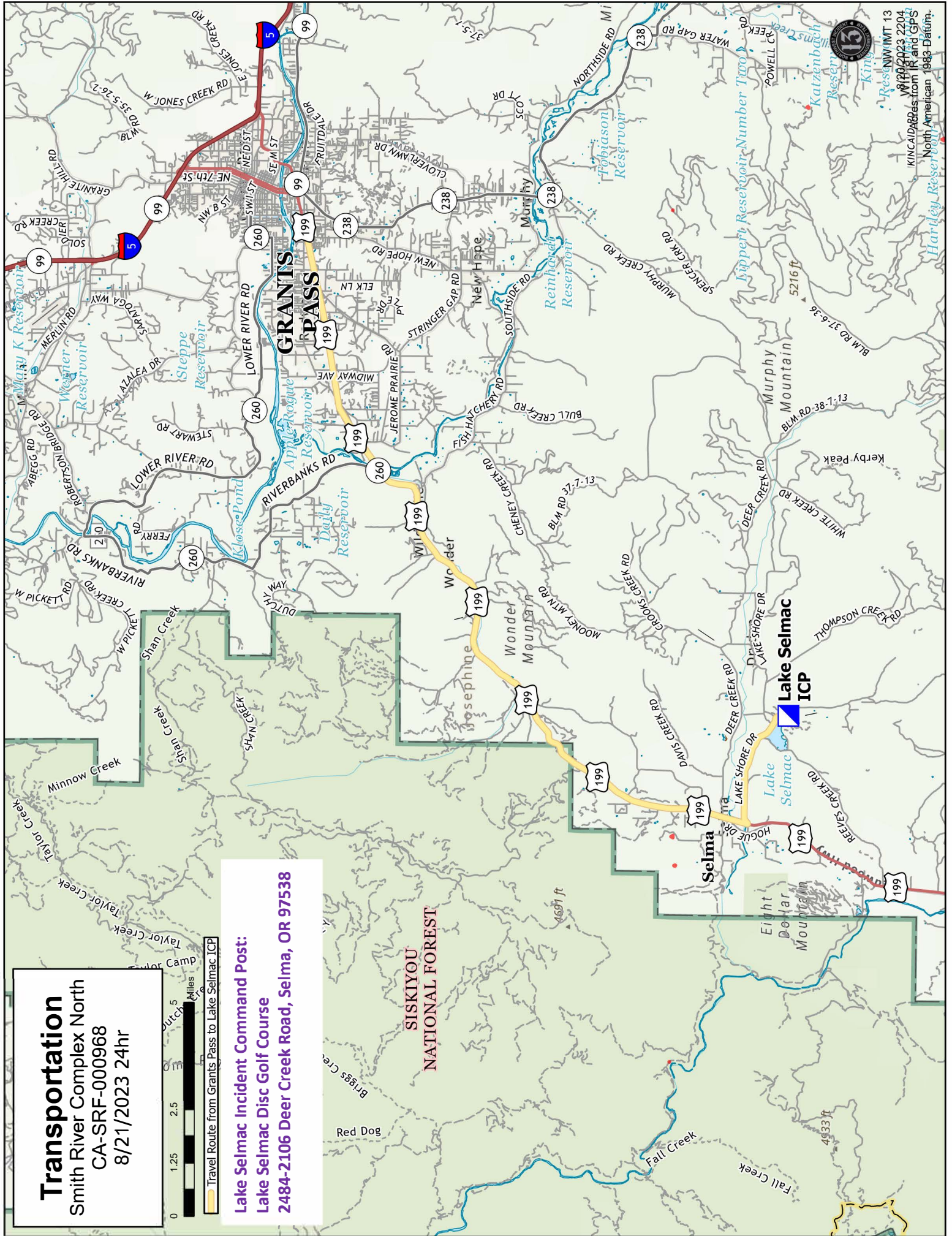


Travel Route from Grants Pass to Lake Selmac ICP

Lake Selmac Incident Command Post:

Lake Selmac Disc Golf Course

2484-2106 Deer Creek Road, Selma, OR 97538



Reservoirs: Mary K, Steppe, Apogee, Daily, Reinhardt, Fobiason, Hipplit, Katzenbach, Kings, Reservoir, NW IMT 13, V829/2023 2204, KINCAID Res from ICP and GPS, North American 1983 Datum, Hartley Reservoir



**RETURN TO PLANNING OPS BY 1300 HRS**  
**Via radio (preferred method), text, email, photo, or cell phone**  
**Project for Next Operational Period and 48 & 72 hours in the Future**

<b>DIVISION PLANNING SHEET</b>		Division/ Group	Name Of Division /Group Supervisor		
Next Operational Period Date:					
Operations and Resource unit text number and e-mail					
<input type="checkbox"/> - Roll over assigned Resources <input type="checkbox"/> -Excess resources <input type="checkbox"/> -Correction to 204					
E or C number	Strike Team/Task Force/ Resource Designator	Leader	Number Persons	Comments	
<input type="checkbox"/> -Request for additional Resources					
Number	Type	Resource Kind	Number	Type	Resource Kind
Operational Projection/Resource Needs/Excess Resources (48 hours):					
Operational Projection/Resource Needs/Excess Resources (72 hours):					
Comments					



# MEDICAL PLAN (206 WF)

1. Incident/Project Name				2. Operational Period							
<b>Smith River Complex North</b>				Date/Time: <b>8/22 600 – 8/22 2200</b>							
3. Ambulance Services											
Name		Complete Address		Phone		Advanced Life Support (ALS) Yes          No					
AMR		Cave Junction, OR		911		X					
4. Air Ambulance Services											
Name		Phone		Type of Aircraft & Capability							
Mercy Flight		1-800-903-9000 (Press 0)		Critical Care Team of Paramedic and RN 24 hr, 100'x100' LZ.							
REACH		1-800-338-4045		Critical Care Team of Paramedic and RN 24 hr, 100'x100' LZ.							
Teton Short Haul		Smith North Comms/Rogue CC		ALS, Short Haul, Daytime-Sunriver, OR							
National Guard Hoist		Smith North Comms/NWCC		24 hr, Roseburg, OR							
5. Hospitals											
Name		Degrees Decimal Minutes		Travel Time From ICP Air          Gnd.		Phone		Helipad Yes      No		Level of Care	
Asante 3 Rivers Medical Center (Grants Pass, OR)		Lat:	42° 25.27' N		20	90	541-472-7081	X		Level III Trauma	
		Long:	123° 20.56' W		Min	Min.					
Asante Rogue Regional Medical Center (Medford, OR)		Lat:	42° 19.05' N		40	120	541-789-7367	X		Level II Trauma	
		Long:	122° 50.00' W		Min	Min.					
Legacy Emanuel Hospital (Portland, OR)		Lat:	45° 32.668' N		1.5	5	503-413-4121	X		Level I Trauma Burn Center	
		Long:	122° 40.293' W		Hrs.	Hrs.					
Sutter Coast Hospital (Crescent City, CA)		Lat:	41° 46.27454' N		X	2	707-464-8888		X	Level III Trauma	
		Long:	124° 11.537' W			Hrs.					
Mercy Medical Center (Redding, CA)		Lat:	40° 34.14' N		1	4	530-225-6000	X		Level II Trauma	
		Long:	122° 23.97' W		Hr.	Hrs.					
UC Davis Medical Center (Sacramento, CA)		Lat:	38° 33.20' N		2	6	916-734-3636	X		Level I Trauma Burn Center	
		Long:	121° 27.28' W		Hrs.	Hrs.					
<b>ICP</b>		<b>EMS Responders &amp; Capability:</b>				James Brown MEDL, EMPF 360-775-5413 Ben Meacham MEDL, EMTF 360-921-3817 Mark Notaras MEDL, EMTF 509-386-7860					
		Equipment Available on Scene:				ALS Kit, LP15 defib, O2, OTC meds					
		Medical Emergency Channel:				Smith River North Communications Plan					
		ETA for Ambulance to Scene:									
		Air:				30 – 60 min					
		Ground:				30 – 60 min					
		Approved Heli-Spot									
		Lat: Long:									
<b>DIV I / K</b>		<b>EMS Responders &amp; Capability:</b>				Medic 1- Joel Bower 360-461-7390 ALS Kit/AED EMT 99- Jessica Kiel 206-375-7053 BLS Kit					
		Equipment Available on Scene:				ALS Kit, defib, O2, OTC meds					
		Medical Emergency Channel:				Smith River North Communications Plan					
		ETA for Ambulance to Scene:									
		Air:				30-60 min					
		Ground:				60 min					
		Approved Heli-Spot									
		Lat: Long:									
<b>DIV H</b>		<b>EMS Responders &amp; Capability:</b>				Medic 2- Erica Jackson 662-588-2328 ALS Kit/AED					
		Equipment Available on Scene:				ALS Kit, defib, O2, OTC meds					
		Medical Emergency Channel:				Smith River North Communications Plan					
		ETA for Ambulance to Scene:									
		Air:				30-60 min					
		Ground:				60 min					
		Approved Heli-Spot									
		Lat: Long:									

Prepared By (Medical Unit Leader)	Date	Reviewed By (Safety Officer)	Date
Ben Meacham MEDL	8/21/2023	Ray Hershey SOF2	8/21/2023
Signature: <i>Ben Meacham</i>		Signature: <i>Ray Hershey</i>	

# MEDICAL PLAN (ICS 206 WF)

Controlled Unclassified Information//Basic

## Medical Incident Report

**FOR A NON-EMERGENCY INCIDENT, WORK THROUGH CHAIN OF COMMAND TO REPORT AND TRANSPORT INJURED PERSONNEL AS NECESSARY.**

**FOR A MEDICAL EMERGENCY: IDENTIFY ON-SCENE INCIDENT COMMANDER BY NAME AND POSITION AND ANNOUNCE "MEDICAL EMERGENCY" TO INITIATE RESPONSE FROM IMT COMMUNICATIONS/DISPATCH.**

**Use the following items to communicate situation to communications/dispatch.**

**1. CONTACT COMMUNICATIONS / DISPATCH** (Verify correct frequency prior to starting report)

*Ex: "Communications, Div. Alpha. Stand-by for Emergency Traffic."*

**2. INCIDENT STATUS:** Provide incident summary (including number of patients) and command structure.

*Ex: "Communications, I have a Red priority patient, unconscious, struck by a falling tree. Requesting air ambulance to Forest Road 1 at (Lat./Long.) This will be the Trout Meadow Medical, IC is TFLD Jones. EMT Smith is providing medical care."*

Severity of Emergency / Transport Priority	<input type="checkbox"/> <b>RED / PRIORITY 1 Life or limb threatening injury or illness. Evacuation need is IMMEDIATE</b> <i>Ex: Unconscious, difficulty breathing, bleeding severely, 2<sup>o</sup> – 3<sup>o</sup> burns more than 4 palm sizes, heat stroke, disoriented.</i> <input type="checkbox"/> <b>YELLOW / PRIORITY 2 Serious Injury or illness. Evacuation may be DELAYED if necessary.</b> <i>Ex: Significant trauma, unable to walk, 2<sup>o</sup> – 3<sup>o</sup> burns not more than 1-3 palm sizes.</i> <input type="checkbox"/> <b>GREEN / PRIORITY 3 Minor Injury or illness. Non-Emergency transport</b> <i>Ex: Sprains, strains, minor heat-related illness.</i>	
Nature of Injury or Illness & Mechanism of Injury		<i>Brief Summary of Injury or Illness (Ex: Unconscious, Struck by Falling Tree)</i>
Evacuation Request		<i>Air Ambulance / Short Haul/Hoist Ground Ambulance / Other</i>
Patient Location		<i>Descriptive Location &amp; Lat. / Long. (WGS84)</i>
Incident Name		<i>Geographic Name + Medical (Ex: Trout Meadow Medical)</i>
On-Scene Incident Commander		<i>Name of on-scene IC of Incident within an Incident (Ex: TFLD Jones)</i>
Patient Care		<i>Name of Care Provider (Ex: EMT Smith)</i>

**3. INITIAL PATIENT ASSESSMENT:** Complete this section for each patient as applicable (start with the most severe patient)

Patient Assessment: See IRPG PAGE 106

Treatment:

**4. EVACUATION PLAN:**

Evacuation Location (if different): (Descriptive Location (drop point, intersection, etc.) or Lat. / Long.) Patient's ETA to Evacuation Location:

Helispot / Extraction Site Size and Hazards:

**5. ADDITIONAL RESOURCES / EQUIPMENT NEEDS:**

*Example: Paramedic/EMT, crews, immobilization devices, AED, oxygen, trauma bag, IV/fluid(s), splints, rope rescue, wheeled litter, HAZMAT, extrication*

**6. COMMUNICATIONS: Identify State Air/Ground EMS Frequencies and Hospital Contacts as applicable**

Function	Channel Name/Number	Receive (RX)	Tone/NAC *	Transmit (TX)	Tone/NAC *
COMMAND					
AIR-TO-GRND					
TACTICAL					

**7. CONTINGENCY: Considerations:** If primary options fail, what actions can be implemented in conjunction with primary evacuation method? Be thinking ahead..

**8. ADDITIONAL INFORMATION:** Updates/Changes, etc.

**REMEMBER:** Confirm ETAs of resources ordered. Act according to your level of training. Be Alert. Keep Calm. Think Clearly. Act Decisively.