

FINANCE MESSAGE

Finance Email: 2023.smithrivercomplex.finance@firenet.gov

Finance Phones: *Contractors: 971-245-0259 Agency Personnel: 971-762-8750*

This incident requires electronic documentation. Please email your time to the Finance email address daily *with the word "NORTH" as the first word in the subject line.* Finance documents required upon check in are:

Required Documents

Overhead, Agency Crews & Cooperators	Contract Resources
Check-in docs needed: Resource Order, Manifest, Cooperative Agreement, Casual Hire Form w/ECI# (as applicable)	Check-in docs needed: Resource Order, Manifest, Full Contract/Agreement, Certifications (<i>If required</i>) Pre-Inspection
Daily: CTRs, Shift Tickets	Daily: CTRs, Shift Tickets, receipts (claims, etc.)
Demob: Signed OF-288; Signed OF-286	Demob: Contractor Evaluations, Shift Tickets, receipt(s) for Addition/Deductions, Post-Inspection, Signed OF-286

Additional Incident Information (to be added to your Shift Ticket or CTR)

Incident Name: Smith River Complex North

Incident Number: CA-SRF-000968

Financial codes:

DOI – QJ6L

Washington DNR 221-ICM

USDA – P5QJ6L (0510)

THANK YOU!!

LOGISTICS Lake Selmac ICP

Kitchen Hours

- Breakfast 0530 – 0900
- Lunch/Water/ICE available at ICP
- Dinner 1800 – 2100

Supply

- Open 0600 – 2100

Fuel Tender

- Open 0600 – 1000
- Open 1500 – 2100

Showers

- Open 0500 – 1200
- Open 1400 – 2200

Laundry – Arriving on Wednesday 08/23

CHECK-IN

Please complete the virtual check-in process via the link below. If you have any questions, please email check-in at 2023.smithrivercomplex.checkin@firenet.gov. Please put NORTH in the subject line when emailing check-in.

You are not checked in until you provide the following:


- Red Cards
- Roster/Manifest



Process for crew/operator personnel swaps:

Contact Check-In at 208-891-6877 or stop by Lake Selmac ICP and provide the necessary information on personnel changes 48 hours prior to swapping crew members/operators.

If you have DEMOB questions call 541-414-6539.

INCIDENT OBJECTIVES	1. Incident Name Smith River Complex North	2. Date August 22, 2023	3. Time 2000
4. Operational Period: 08/23-24/2023 0600-0600			
<p>5. General Objectives: Implement a FULL suppression strategy for the Smith River Complex:</p> <ul style="list-style-type: none"> • Provide for firefighter and public safety through hazard recognition and application of the risk management process. • Coordinate public information to provide timely and continuous updates to affected agency partners, cooperators, and the public. • Coordinate suppression activities with READs to minimize impacts on natural and cultural resources. • Effectively manage and track costs for all incidents identified within the Smith River Complex. • Close coordination with Regions 5 and 6 fire leadership to ensure effective and efficient management of firefighting resources. • Smith River Complex has two IMTS managing the incident with CA-15 to the south and PNW-13 to the north. • Effectively manage and track costs for all incidents identified within the Smith River Complex. <p>Smith River Complex North (PNW-13):</p> <ul style="list-style-type: none"> • Protect and minimize the impact to the communities of Elk creek, Illinois valley, Dwight creek, Takelma, and Sun star. • Evaluate control features, develop structure protection group. • Work with Josephine and Curry Counties in Oregon, as well as Del Norte County in California for evacuation levels and future recommendations. • Develop a PACE model, in coordination with CA-15. <p>Smith River Complex South (CA-15):</p> <ul style="list-style-type: none"> • Minimize impact to the communities and outlying areas near Gasquet, Pioneer, Lower Jones Creek, Washington Flat, Siskiyou Fork, French Hill, Coon Creek, Rock Creek, and Crescent City, as well as water resources, transportation routes, electrical infrastructure, and natural and cultural resources. • East of the Six Rivers National Forest boundary • West of the Six Rivers and Klamath National Forest boundary • North of the 15N01 forest road • South of the Rouge Siskiyou National Forest Boundary 			
<p>5a. Incident Requirements</p> <ul style="list-style-type: none"> • Provide Agency Administrator updates and briefings on incident status as conditions evolve. • The Smith River Complex is being managed with a full suppression strategy. • Personnel on the incident will implement a risk-based decision-making process, with shared AA alignment. • Firefighting operations will implement tactics that offer the highest probability of success to achieve the strategy of suppressing the fire, preventing unnecessary exposure to ground personal, suppression related damage, and protecting values at risk. • Values include the safety of the public, and firefighters; including private and tribally held timberlands. 			
<p>5b. Leaders Intent</p> <ul style="list-style-type: none"> • Safety: Firefighter, public, and aviation safety will be addressed through hazard/exposure risk mitigation processes. • Risk Management: Utilize an aligned risk assessment process which mitigates exposure to firefighters through evaluation of conditions during the duration of the incident. • Communication: Keep Agency Administrators and firefighters informed of strategic actions, accomplishments, and challenges. • Operations: Make informed strategic/tactical decisions suppressing the fire in the right geographic locations with the appropriate resources having the highest probability of success. • Stakeholders: Collaborate with local partners, officials, and landowners to provide situational updates pertinent to the fire. • Logistics: Provide support ensuring food, water, and shelter for incident responders. • Human Resources: Ensure that all incident personnel are treated with dignity and respect, while having zero tolerance for harassment, alcohol, or illegal drug use. • Public Information: Provide timely and accurate information through media outlets, trap lines, briefings, community meetings, and social platforms. • Finance: Monitor and communicate incident cost associated with meeting incident objectives. • Planning: Provide incident documentation, resource tracking, and accurate data management. 			
6. Weather Forecast & General Safety Message for Period – See Attached			
7. Attachments (mark if attached)			
<input checked="" type="checkbox"/> Organization List - ICS 203	<input checked="" type="checkbox"/> Weather Forecast	<input checked="" type="checkbox"/> Safety Message	
<input checked="" type="checkbox"/> Div. Assignment Lists - ICS204	<input checked="" type="checkbox"/> Fire Behavior Forecast	<input type="checkbox"/> Medical Emergency Com Plan	
<input checked="" type="checkbox"/> Communications Plan - ICS 205	<input checked="" type="checkbox"/> Incident Map	<input type="checkbox"/>	
<input checked="" type="checkbox"/> Medical Plan - ICS 206	<input checked="" type="checkbox"/> Air Operations - ICS 220	<input type="checkbox"/>	
9. Prepared by Aileen Nichols	9. Approved by (Incident Commander) Eric Riener 		

ICS 202007

ORGANIZATION ASSIGNMENT LIST	
1. Incident Name Smith River Complex North	
2. Date August 22, 2023	3. Time 1830
4. Operational Period August 23-24, 2023 0600-0600	
Position	Name
NWIMT 13 LWD 9/02/2023	
5. Incident Commander and Staff	
Incident Commander	Eric Riener
Liaison Officer/Deputy IC	Larry Nickey
Safety Officer	Ray Hershey
Information Officer	Randall Rishe
Information Officer Deputy	Eric Waters
Human Resource Specialist	Margaret Dietrich
6. Agency/Organization Representative(s):	
USFS RSF Agency Administrator	Al Watson
USFS RSF River Agency Representative	Scott Blower
USFS RSF Fire Management Liaison	Mike McCann
BLM Agency Administrator	Steven Lydick
BLM Agency Representative	Chris Foster
BLM Agency Representative - t	Heidi Lowery
Oregon Department of Forestry	Ryan Gorden
Lead READ	Stacy Johnson
7. Planning Section	
Plans Chief	Aileen Nichols
Resources Unit	Meredith Butcher
Resources Unit - t	Carolyn Zanotto
Status Check-In	Sandy Hoffman
Status Check-In/Documentation Unit - t	Robert Wandel
Demob Unit	Laura Backlund
Situation Unit - t	Laurie Bergvall
Fire Behavior Analyst	Dean Warner
Incident Meteorologist	Jonathan Chriest
GIS Specialist	Kayla Fermin
GIS Specialist - t	David Hines
Computer Specialist	Dave Johnson
Computer Specialist	Jeff Hixon
Computer Specialist - t	Zak Thomas
8. Logistics Section	
Logistics Chief	Bryan Swanberg
Logistics Chief - t	Cindy Preston
Deputy Logistics Chief	Jim Hammer
Deputy Logistics Chief	Peter Fitzmaurice
Supply Unit Leader - t	Jon Byerly
Ordering Manager	Rob Jeter
Ordering Manager - t	Robert Yarnall
Communications Unit Ldr - t	Bruce Hanna
Incident Comm Mgr	Alandra Swords
Com Tech	Kevin Alexander
Food Unit Leader	Pat Young
Facilities Unit Leader	Keith Yonaka
Facilities Unit Leader	Shannon Anderson
Medical Unit Leader	Ben Meacham
Medical Unit Leader	James Brown
Ground Support Unit	Dave Hesburn

Ground Support Unit		Billie Hunter
Receiving/Distribution Mgr - t		Aaron Ritter
Base Camp Manager - t		Justin Schmal
9. Operations Section		
Operations (Field)		John Spencer Jesse Stone - t
Operations (Planning/ Strategic)		Shawn Jaca
Operations (Planning)		Tim Crawley-Murphey - t
Operations (Night)		Larry Pingle
a. North		
Branch Director		
Division Supervisor	H	Anna Graves Jothan McGaughey - t
Division Supervisor	I/K	Whitney Machado Silas Baffa - t
Group Supervisor	Structure	Robert Boles Shannon Clark - t
Group Supervisor	Contingency	Randy Anderson Mark Johnson - t
Manager	Staging	Rick Long
b.		
Branch Director		
Division Supervisor		
Division Supervisor		
c. Air Operations Branch		
Air Operations		Steve Markason
Air Support Group		Jim Dotson
Air Support Group - t		Bert Smith - t
10. Finance Section		
Finance Chief		Veronika Klukas
Finance Chief - t		Lori Price
Cost Unit		Paula James
Time Unit		Angie Chapman
Time Unit - t		Heather Fitzpatrick
Proc Unit Leader		Laurette Gaylord
Proc Unit Leader - t		Eric Soto
COMPS/CLAIMS		Hanna Jeter
Incident Cont. Project Insp		Stan Zazado
Equipment Time Recorder		
PTRC/In-Box Manager - t		Ryker Aldred
PREPARED BY: Meredith Butcher		



Fire Weather Forecast



FORECAST NO: 1
PREDICTION FOR: Wednesday-Thursday
DATE: August 23, 2023
FORECAST ISSUED: 1800 August 22, 2023

FIRE: Smith River Complex North
UNIT: CA-SRF-968
IMET: Jonathan Chriest (425-765-3749)
SIGNED: *Jonathan Chriest*

WEATHER DISCUSSION: Valley elevations = 1400 ft (Illinois Valley), Ridgetop elevations = 3300 ft (Monkey Ridge)
 An inverted trough will linger offshore this morning, bringing strong NE winds over ridgetops in the morning. Temperatures will rise sharply as high pressure builds into the area. Relative humidities will be lower under clear skies and a prolonged period of offshore flow. A thermal trough will develop inland on Thursday, which will bring west winds and a return of dense smoke. Temperatures in valleys on Thursday will also climb into the 90s. There is a slight (~10%) chance of thunderstorms Thursday evening.

TODAY:

WEATHER: Clear. Heavy smoke in valleys near the fire in the morning. Visibility improving in the afternoon
MAX TEMP: Valleys: 82-87°F (10-13°F ↑) MIN RH: Valleys: 29-36% (10-15% ↓)
 Ridgetops: 75-79°F (5-9°F ↑) Ridgetops: 33-38% (10-20% ↓)
CHC WTG RAIN: 0% LAL: 1 SFC VIS: 1-2 miles, better NE of the fire in the afternoon
WINDS: Valleys: Morning: NE 3-7 mph, afternoon: N 5-9 mph.
 (20 feet) Ridgetops: Morning: NE 10-15 mph gusts to 20 mph, afternoon: NW 4-7 mph gusts to 10 mph
MIXING HEIGHT: Rising to 6,000 ft by 1200. **TRANSPORT WIND:** North 6-10 mph.

TONIGHT:

WEATHER: Mostly clear.
MIN TEMP: Valleys: 49-54° (4-6°F ↑) MAX RH: Valleys: 50-56% (15-20% ↓)
 Ridgetops: 55-59° (5-7°F ↑) Ridgetops: 46-51% (13-18% ↓)
CHC WTG RAIN: 0% LAL: 1 SFC VIS: 1-2 miles
WINDS: Valleys: Downslope 2-4 mph.
 (20 FEET) Ridgetops: East 8-12 mph, infrequent gusts to 18 mph.
MIXING HEIGHT: Dropping to 1,000 ft by 0100. **TRANSPORT WIND:** Northeast 6-8 mph.

THURSDAY:

WEATHER: Clear. Periods of heavy smoke. 10% chance of evening thunderstorms.
MAX TEMP: Valleys: 90-95°F (10-14°F ↑) MIN RH: Valleys: 30-36% (Little change)
 Ridgetops: 83-87°F (6-10°F ↑) Ridgetops: 33-38% (Little change)
CHC WTG RAIN: 0% LAL: 1 SFC VIS: 1-2 miles, worsening in the afternoon
WINDS: Valleys: Morning: downslope 3-6 mph, afternoon: west 3-7 mph.
 (20 feet) Ridgetops: Morning: east 8-12 mph, afternoon: west 7-12 mph gusts to 20 mph.
MIXING HEIGHT: Rising to 9,000 ft by 1300. **TRANSPORT WIND:** Southwest 10-14 mph.

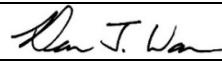
EXTENDED OUTLOOK: Temperatures will cool slightly Friday but remain in the upper 70s over ridges and mid to upper 80s in valleys under clear skies through the weekend. A diurnal wind pattern will develop with gusty W winds expected each afternoon. Moderate to good RH recovery is expected each night. No precipitation or thunderstorm activity is expected through early next week.



Nearby Weather Observations

Please send weather observations to Jonathan Chriest (IMET) at jonathan.chriest@noaa.gov or 425-765-3749

Fire Behavior Forecast #3

Incident: Smith River Cx North CA-SRF-000968	TYPE OF FIRE: Wildfire
DATE/TIME ISSUED: 8/21/23 1900	OPERATIONAL PERIOD: 8/22-24/23 All Shifts
FBAN: Dean Warner	Signed: 

Weather Summary - See Incident Weather Forecast:
Moderated weather will keep temps low and RH high.

Fuels

Shrub: Shrubs and brush are 1 to 3 feet high with a low to moderate load of grass intermixed with sparse stems of conifer. Manzanita brush and other live fuels are drought stressed from below normal amounts of spring precipitation. These live fuels are cured enough to contribute fire spread. Given the typical exposed nature of this fuel, eye level winds in excess of 6 mph can cause rates of spread to exceed 8 chains per hour. Without wind these fuels will typically exhibit low rates of spread.

Timber litter and shrub: Primary carrier of the fire is understory brush with timber and leaf litter. Expect slow rates of spread under moderate weather conditions. Canopy closure shelters fuels from wind but fire spread will be slow and continuous. Eye level winds in excess of 6 mph will allow fire to reach the canopy, resulting in torching and possible crowning. The drought stressed vegetation and areas of abundant dead fuel loading will exasperate fuel spread.

OUTPUTS: Expected Fine Dead Fuel Moisture: 5%-8% POI: 60%-70%

Fire Behavior: Active Max. spot distance: ¼ mile LAL: 1 ERC: 63=93 percentile Camp Lookout RAWS	Fuel/Type Model	Maximum Rate of Spread	Maximum Flame Length
	Shrub	8 ch/hr	2 ft.
	Timber litter shrub	2 ch/hr	1 ft.

Expected Fire Behavior: Based on the Warmest, Driest, Windiest Conditions Forecasted

General/Potential:

NE to NW wind flow should keep fire activity from aligning with slope and provide favorable conditions for line construction and tactical burning operations. These favorable conditions will end by tomorrow morning. Starting Thursday, temperature, RH, and wind direction will not favor our operational effort.

Hotel: Fire will continue to advance on the 4402 road and 112 road from the Diamond Creek drainages and Monkey Creek.

India: Fire will continue backing off of Monkey Creek Ridge towards the Hwy 199 corridor. Conditions will be favorable for tactical firing operations. Expect a slow progression of fire spread given favorable predicted NE winds.

Kilo: Fire will continue to progress north and east on the east side of Hwy 199, watch for fire to establish in the Siskiyou and Middle Forks of the Smith River, the riparian influenced areas offer abundant fuels for fire to progress up drainage to the east.

Air Operations

Morning inversion may break early but smoke will affect aviation operations throughout the day.

Safety

Watch Out Situation 15 is emphasized today: **Wind increases and/or changes direction.** Fuel dryness maintains consumption but winds have a compounding and profound effect as well. Daily variable speed and direction changes provide an extra operational challenge. Take note of hourly weather observations and adjust your situational awareness accordingly.

DIVISION ASSIGNMENT LIST			1. Branch		2. Division H	
3. Incident Name Smith River Complex North			4. Operational Period Date: 08/23/2023 Time: 0600-2200			
5. Operations Personnel						
Operations Chief		John Spencer Jesse Stone - t		Division Supervisor		Anna Graves Jothan McGaughey - t
Safety Officer		Ray Hershey		Air Attack		
6. Resources Assigned this Period						
Strike Team/Task Force/Resource Designator		Leader	# Persons	LWD	Drop Off PT./Time	Pick Up PT./Time
1	O-50014 HEQB	Clint Foster	1	9/3	Lake Selmac ICP	Lake Selmac ICP
2						
3	E-50040 CHP2 Prometheus	Steven Carrick	3	9/5	Lake Selmac ICP	Lake Selmac ICP
4	E-40001 MBM2 Morris Forestry LLC	Todd Donahue	2	9/3	Lake Selmac ICP	Lake Selmac ICP
5						
6	**E-50061 ENG6 3Bs	Jonathan Toebben	3	8/31	Lake Selmac ICP	Lake Selmac ICP
7	**E-50062 ENG6 Lone Pine	Katy Adams	3	8/31	Lake Selmac ICP	Lake Selmac ICP
8						
9						
10						
11	Pacific Power Task Force	Anna Arritola	12		No meals	
12						
13						
14						
15						
16						
17						
18						
19	O-68 Medic 2	Erica Jackson	1		Lake Selmac ICP	Lake Selmac ICP
20	O-50029 Medic 3	Stephan Smith	1		Lake Selmac ICP	Lake Selmac ICP
21	O-50032 EMT1	Lisa Johnson	1		Lake Selmac ICP	Lake Selmac ICP
22						
		Meal count	15			
7. Control Operations: Task: Scout the 019 road. Start prepping 019 road and old dozer line from the Biscuit fire. Finish prepping power poles. Gain access to slop over on 4402 road. Purpose: Minimize impacts to communities and infrastructure to the north. End state: Impacts have been minimized to communities and infrastructure to the north.						
8. Special Instructions: **Indicates IA Resources.						
9. Division/Group Communication Summary						
See Communications Plan						
Prepared by (Resource Unit Ldr) <i>Meredith Butcher/Carolyn Zanotto</i>			Approved by (Planning Sect. Ch.) <i>Aileen Nichols</i>		Date 08/22/2023	Time 2000

DIVISION ASSIGNMENT LIST				1. Branch		2. Division I/K	
3. Incident Name Smith River Complex North				4. Operational Period Date: 08/23/2023 Time: 0600-2200			
5. Operations Personnel							
Operations Chief		John Spencer Jesse Stone - t		Division Supervisor		Whitney Machado Silas Baffa - t	
Safety Officer		Ray Hershey		Air Attack			
6. Resources Assigned this Period							
Strike Team/Task Force/Resource Designator		Leader	# Persons	LWD	Drop Off PT./Time	Pick Up PT./Time	
1	O-50015 TFLD	Jyota Smith-Howard	1	9/3	Lake Selmac ICP	Lake Selmac ICP	
2	O-50045 FMOD Toms Timber LLC	Tyler Pacheco	2	9/2	Lake Selmac ICP	Lake Selmac ICP	
3	O-50044 FMOD Cut Rite Inc	Dave Hillsman	2	9/4	Lake Selmac ICP	Lake Selmac ICP	
4	C-50017 CR2I Redmond IHC	Dave Varon	22	8/31	Lake Selmac ICP	Lake Selmac ICP	
5	C-50016 CRW1 Palomar IHC	Jose Ortega	23	8/29	Lake Selmac ICP	Lake Selmac ICP	
6	C-50004 CRW2 Pacific Coast	Javier Ramos	20	9/4	Lake Selmac ICP	Lake Selmac ICP	
7	**C-50013 CR2I Pacific Oasis 14A	Jason Maza	20	8/31	Lake Selmac ICP	Lake Selmac ICP	
8	**E-50065 ENG6 GE Forestry 1	Edgar Aguilar	3	8/31	Lake Selmac ICP	Lake Selmac ICP	
9	**E-50057 ENG6 Fuego 6	Chase Workman	3	9/1	Lake Selmac ICP	Lake Selmac ICP	
10	E-50058 ENG6 Lomakatski 65	Antonio Lopez	3	8/31	Lake Selmac ICP	Lake Selmac ICP	
11	E-50059 ENG6 Green Mtn 88	Scott Brennan	3	8/31	Lake Selmac ICP	Lake Selmac ICP	
12	E-50060 ENG6 Sundance 5	Emilio Garcia	3	8/31	Lake Selmac ICP	Lake Selmac ICP	
13	**E-39 WTS2 Sugden 1	Tom Sugden	1	8/31	Lake Selmac ICP	Lake Selmac ICP	
14	E-50056 WTS2 Autobrot 1	Dakota Williams	2	8/31	Lake Selmac ICP	Lake Selmac ICP	
15	E-40003 DZR2 Ace Earth Moving	Wade Comyford	2	9/4	Lake Selmac ICP	Lake Selmac ICP	
16	E-40002 DZR2 Table Mtn. Forestry	Mitchell West	2		Lake Selmac ICP	Lake Selmac ICP	
17							
18	O-50013 Medic 1	Joel Bower	1	9/5	Lake Selmac ICP	Lake Selmac ICP	
19	O-50031 EMT 99	Jessica Kiel	1	9/5	Lake Selmac ICP	Lake Selmac ICP	
20	O-50025 EMT 2	James Henson	1	9/5	Lake Selmac ICP	Lake Selmac ICP	
21	*O-50015 REMS 1	Dan Blaul	4	9/5	Lake Selmac ICP	Lake Selmac ICP	
22							
		Meal count	119				
7. Control Operations: Task: Construct fireline along Monkey Ridge down to Hwy 199. Scout and identify contingency lines east of Hwy 199. Tie fireline into Hwy 199 and establish contingency lines. Purpose: Keep fire south of Elk Valley and Illinois Valley communities. End state: Impacts have been minimized to communities and infrastructure.							
8. Special Instructions: *REMS 1 staged at DP31 **Indicates IA Resources.							
9. Division/Group Communication Summary See Communications Plan							
Prepared by (Resource Unit Ldr) <i>Meredith Butcher/Carolyn Zanotto</i>			Approved by (Planning Sect. Ch.) <i>Aileen Nichols</i>			Date 08/22/2023	Time 2000

DIVISION ASSIGNMENT LIST				1. Branch		2. Division Structure North	
3. Incident Name Smith River Complex North				4. Operational Period Date: 08/23/2023 Time: 0600-2200			
5. Operations Personnel							
Operations Chief		John Spencer Jesse Stone - t		Division Supervisor		Robert Boles Shannon Clark - t	
Safety Officer		Ray Hershey		Air Attack			
6. Resources Assigned this Period							
Strike Team/Task Force/Resource Designator		Leader	# Persons	LWD	Drop Off PT./Time		Pick Up PT./Time
1	C-50002 CRW2 Lomakatsi Ecological	Braulio Maya	20	9/4	Lake Selmac ICP		Lake Selmac ICP
2							
3	E-50041 ENG3 Allied Water Service	Matthew	3	9/5	Lake Selmac ICP		Lake Selmac ICP
4							
5	E-50005 WTS2 Rouge Basin Fire	Matthew Jordan	1	9/5	Lake Selmac ICP		Lake Selmac ICP
6	E-50036 WTS2 Lavenbarg	Dan Lavenbarg	1	9/5	Lake Selmac ICP		Lake Selmac ICP
7							
8							
9	TASK FORCE 1						
10	O-50107 TFLD	Mike Lambert	1	8/23	Lake Selmac ICP		Lake Selmac ICP
11	C-91 CRW2 Pacific Oasis	James Spriggs	20	8/23	Lake Selmac ICP		Lake Selmac ICP
12	E-408 ENG4	Mike Misek	3	8/29	Lake Selmac ICP		Lake Selmac ICP
13	E-403 ENG6	David Bryant	3	8/26	Lake Selmac ICP		Lake Selmac ICP
14	E-4000 WTS2 Darrah Logging 4	Bob Cretton	1	8/30	Lake Selmac ICP		Lake Selmac ICP
15							
16	L/L Task Force South						
17	E-256 ENG5		3	9/4	Lake Selmac ICP		Lake Selmac ICP
18	E-253 ENG6		3	9/4	Lake Selmac ICP		Lake Selmac ICP
19	E-29 ENG6		3	9/4	Lake Selmac ICP		Lake Selmac ICP
20	E-255 ENG5		3	9/4	Lake Selmac ICP		Lake Selmac ICP
21	E-252 ENG5		3	9/4	Lake Selmac ICP		Lake Selmac ICP
22							
		Meal count	68				
7. Control Operations: Task: Assess and prep the Hwy 199 corridor and Lone Pine Rd in Div K. Purpose: Minimize fire impacts to private residences in the fire area. End state: Area to be protected is prepped and secured.							
8. Special Instructions:							
9. Division/Group Communication Summary							
See Communications Plan							
Prepared by (Resource Unit Ldr) <i>Meredith Butcher/Carolyn Zanotto</i>			Approved by (Planning Sect. Ch.) <i>Aileen Nichols</i>			Date 08/22/2023	Time 2000

-DIVISION ASSIGNMENT LIST			1. Branch		2. Division Contingency North	
3. Incident Name Smith River Complex North			4. Operational Period Date: 08/23/2023 Time: 0600-2200			
5. Operations Personnel						
Operations Chief		John Spencer Jesse Stone - t		Division Supervisor		Randy Anderson Marc Johnson - t
Safety Officer		Ray Hershey		Air Attack		
6. Resources Assigned this Period						
	Strike Team/Task Force/Resource Designator	Leader	# Persons	LWD	Drop Off PT./Time	Pick Up PT./Time
1	E-40000 MBM2 Lone Star Ent.	Mike Bunker	2	9/5	Lake Selmac ICP	Lake Selmac ICP
2						
3	E-50037 WTS2 Lavenbarg	John Dalton	1	9/5	Lake Selmac ICP	Lake Selmac ICP
4						
5						
6						
7						
8						
9						
10						
11						
12						
13						
14						
15						
16						
17						
18						
19						
20						
21						
22						
		Meal count	3			
7. Control Operations: Task: Brush the 18 & 11 Rd from Hwy 199 east to forest road 444. Purpose: Use the district border as a contingency line. End state: Area to be protected is prepped and secured.						
8. Special Instructions:						
9. Division/Group Communication Summary See Communications Plan						
Prepared by (Resource Unit Ldr) <i>Meredith Butcher/Carolyn Zanotto</i>		Approved by (Planning Sect. Ch.) <i>Aileen Nichols</i>		Date 08/22/2023	Time 2000	

-DIVISION ASSIGNMENT LIST			1. Branch		2. Division Nights North	
3. Incident Name Smith River Complex North			4. Operational Period Date: 08/23/2023 – 8/24/2023 Time: 1500-0700			
5. Operations Personnel						
Operations Chief		Larry Pingle		Division Supervisor		
Safety Officer		Ray Hershey		Air Attack		
6. Resources Assigned this Period						
Strike Team/Task Force/Resource Designator		Leader	# Persons	LWD	Drop Off PT./Time	Pick Up PT./Time
1	RSF Surge Resources – 4 engines	Monty Edwards	12			
2						
3	Mutual Aid Task Force		40			
4						
5						
6						
7						
8						
9						
10						
11						
12						
13						
14						
15						
16						
17						
18						
19						
20						
21						
22						
		Meal count	120		Includes double lunch	
7. Control Operations: Task: Structure protection. Purpose: Protect structures. End state: Impacts have been minimized to communities and infrastructure.						
8. Special Instructions:						
9. Division/Group Communication Summary						
See Communications Plan						
Prepared by (Resource Unit Ldr) <i>Meredith Butcher/Carolyn Zanotto</i>		Approved by (Planning Sect. Ch.) <i>Aileen Nichols</i>		Date 08/22/2023	Time 2000	

INCIDENT RADIO COMMUNICATIONS PLAN (ICS 205)

Controlled Unclassified Information//Basic

1. Incident Name:		2. Date/Time Prepared:		3. Operational Period:						
SMITH RIVER COMPLEX NORTH		Date: 08/22/2023 Time: 1920		Date/Time From: 08/23/2023 0600 Date/Time To: 08/24/2023 0600						
4. Basic Radio Channel Use:										
Zone Group	Ch #	Function	Channel Name/Trunked Radio System Talkgroup	Assignment	RX Freq	RX Tone/NAC	TX Freq	TX Tone/NAC	Mode (A, D, or M)	Remarks
	1	TACTICAL	TAC 1	UNASSIGNED	168.0500	192.8	168.0500	192.8	A	UNASSIGNED
	2	TACTICAL	TAC 2	DIV I	168.2000	192.8	168.2000	192.8	A	
	3	TACTICAL	TAC 3	DIV K	168.6000	192.8	168.6000	192.8	A	
	4	TACTICAL	TAC 4	UNASSIGNED	166.7250	192.8	166.7250	192.8	A	UNASSIGNED
	5	TACTICAL	TAC 5	DIV H	166.7750	192.8	166.7750	192.8	A	
	6	TACTICAL	TAC 6	UNASSIGNED	168.2500	192.8	168.2500	192.8	A	
	7	CMD	BOLAN ADM	ALL DIV	170.5000	67.0	162.6125	186.2	A	
	8	CMD	FIDDLER ADM	ALL DIV	170.5000	67.0	162.6125	179.9	A	
	9	TACTICAL	VTAC 11	STRUCTURE	151.1375	156.7	151.1375	156.7	A	STRUCTURE GROUP
	10	TACTICAL	ODF REDNET	IA	151.3400	156.7	151.3400	156.7	A	
	11	TACTICAL	NIFC T1	DIV D	168.0500	131.8	168.0500	131.8	A	SRC South
	12	TACTICAL	NIFC T4	DIV MM	166.7250	131.8	166.7250	131.8	A	SRC South
	13	AIR TO GROUND	A/G CMD	ALL DIVS	173.8500	000.0	173.8500	000.0	A	BRANCH AND DIVISION USE
	14	AIR TO GROUND	A/G TAC	ALL DIVS	169.4875	000.0	169.4875	000.0	A	AIR TO GROUND TACTICAL
	15	AIR MEDICAL	VMED 29	ALL DIVS	155.3475	156.7	155.3475	156.7	A	EMS AIR COORDINATION
	16	AIR TO GROUND	AIRGUARD	ALL DIVS	168.6250	000.0	168.6250	110.9	A	EMERGENCY AIRCRAFT CONTACT
5. Special Instructions:										
6. Prepared By COML										
Name: Bruce Hanna				Signature: /s/ Bruce Hanna						
ICS 205										
IAP Page				Date/Time: 8/20/2023 1752						

INCIDENT RADIO COMMUNICATIONS PLAN (ICS 205)

Controlled Unclassified Information//Basic

1. Incident Name:	2. Date/Time Prepared:	3. Operational Period:
SMITH RIVER COMPLEX NORTH INITIAL ATTACK ZONE	Date: 08/21/2023 Time: 20:00	Date/Time From: 08/22/2023 0600 Date/Time To: 08/23/2023 0600

4. Basic Radio Channel Use:											
Zone Group	Ch #	Function	Channel Name/Trunked Radio System Talkgroup	Assignment	RX Freq	RX Tone/NAC	TX Freq	TX Tone/NAC	Mode (A, D, or M)	Remarks	
IA	1	CMD	MONKEY	IA	172.3750	000.0	164.1750	110.9	A	6 RIVERS MONKEY RIDGE	
IA	2	CMD	WILD RVR	IA	171.3875	67.0	164.9625	67.0	A	WILD RIVERS	
IA	3	CMD	GOLD BCH	IA	170.3750	67.0	164.1250	67.0	A	GOLD BEACH	
IA	4	CMD	ODF SEXTON	IA	151.1450	000.0	159.2850	179.9	A	ODF SEXTON	
IA	5	CMD	ODF GRAY BK	IA	151.1450	000.0	159.2850	151.4	A	ODF GREY BACK	
IA	6	TAC	ODF RED	IA	151.3400	000.0	151.3400	156.7	A	ODF RED	
IA	7	A/G	ODF WHITE	IA	151.3100	000.0	151.3100	156.7	A	ODF WHITE A/G	
IA	8	TAC	ODF RVT	IA	159.2400	000.0	159.2400	156.7	A	ODF RVT	
IA	9	A/G	FS A/G51	IA	168.3125	000.0	168.3125	000.0	A	A/G 51	
IA	10	A/G	FS A/G62	IA	169.3625	000.0	169.3625	000.0	A	A/G 62	
IA	11	CMD	BOLAN ADM	IA	170.5000	67.0	162.6125	186.2	A		
IA	12	CMD	FIDDLER ADM	IA	170.5000	67.0	162.6125	179.9	A		
IA	13	A/G	A/G CMD	IA	173.8500	000.0	173.8500	000.0	A		
IA	14	A/G	A/G TAC	IA	169.4875	000.0	169.4875	000.0	A		
IA	15	A/G	VMED 29	IA	155.3475	156.7	155.3475	156.7	A	EMS AIR COORDINATION	
IA	16	A/G	CAL CORD	IA	156.0750	156.7	156.0750	156.7	A	EMS AIR CORD	

5. Special Instructions:	
6. Prepared By (Communications Unit Leader)	Name: Bruce Hanna
Signature: /s/ Bruce Hanna	Date/Time:
ICS 205	IAP Page

ICS 205 - INCIDENT RADIO COMMUNICATIONS PLAN

CONTROLLED UNCLASSIFIED
INFORMATION//BASIC

1. Incident Name: SMITH RIVER COMPLEX - SOUTH Incident Channels		2. Date/Time Prepared Date: 08/22/2023 Time: 1930		3. Operational Period: Date From: 08/23/23 Time From: 0700		Date To: 08/24/23 Time To: 0700			
4. Communications									
Ch#	Function	Name	Assigned To	Rx Freq	Rx Tone	Tx Freq	Tx Tone	Mode	Notes
1	COMMAND	NIFC C3	ALL DIVS	170.4250	(T3) 131.8	168.0750	(T3) 131.8	A	CAMP 6
2	COMMAND	NIFC C34	ALL DIVS	173.9750	(T3) 131.8	164.8625	(T3) 131.8	A	MONKEY RIDGE
3	COMMAND	NIFC C35	ALL DIVS	173.8625	(T3) 131.8	163.8250	(T3) 131.8	A	SHIP MTN LOOKOUT
4	FOREST	SRF 12	EMER BACKUP	172.3750	0.0	164.1750	(T12) 127.3	A	SRF TONE 12, GORDON MTN
5	FOREST	SRF 4	EMER BACKUP	172.3750	0.0	164.1750	(T4) 136.5	A	SRF TONE 4, SHIP MTN
6	TACTICAL	NIFC T1	D	168.0500	(T3) 131.8	168.0500	(T3) 131.8	A	
7	TACTICAL	NIFC T3	A	168.6000	(T3) 131.8	168.6000	(T3) 131.8	A	
8	TACTICAL	NIFC T4	MM	166.7250	(T3) 131.8	166.7250	(T3) 131.8	A	
9	TACTICAL	NIFC T5	PP	166.7750	(T3) 131.8	166.7750	(T3) 131.8	A	
10	TACTICAL	NIFC T6	SS, VV	168.2500	(T3) 131.8	168.2500	(T3) 131.8	A	
11	TACTICAL	VFIRE 22	B	154.2650	(T6) 156.7	154.2650	(T6) 156.7	A	
12	TACTICAL	VFIRE 24	S STRUCTURE/NIGHT	154.2725	(T6) 156.7	154.2725	(T6) 156.7	A	SOUTH STRUCTURE/NIGHT
13	A/G CMD	A/G CMD	ALL DIVS	173.8500	0.0	173.8500	0.0	A	BRANCH AND DIVISION USE
14	A/G TAC	A/G TAC	ALL DIVS	169.4875	0.0	169.4875	0.0	A	AIR TO GROUND TACTICAL
15	TACTICAL	CALCORD	ALL DIVS	156.0750	(T6) 156.7	156.0750	(T6) 156.7	A	EMS AIR COORDINATION
16	AIRGUARD	AIRGUARD	ALL DIVS	168.6250	0.0	168.6250	(T1) 110.9	A	EMERGENCY
17									
18									
19									
20	AIRGUARD	AIRGUARD	ALL DIVS	168.6250	0.0	168.6250	(T1) 110.9	A	EMERGENCY
5. Special Instructions									
CURRENT CLONE: SRC818. COMMAND CHANNELS LINKED. FIND WHICH ONE WORKS BEST IN YOUR OPERATIONAL AREA. SMITH RIVER COMPLEX - SOUTH COMMUNICATIONS PHONE # 760-220-2863									
6. Prepared by (Communications Unit Leader): Name: CHRIS OLIVER COML(t)								Signature: <i>Chris Oliver</i>	
ICS 205 - CONTROLLED UNCLASSIFIED INFORMATION//BASIC								Date/Time: 08/22/23	
								1930	

MUTUAL RESPECT

Each of us has a responsibility to behave in a manner that ensures a harassment-free work environment. This is accomplished when we treat others with dignity and respect.

In today's world it often seems we are living on parallel planets, where the vast partisan/cultural divide has led to two different information streams. Here our mission is to work together to put out the fire. The best way to accomplish that is to show one another mutual respect.

This type of responsible behavior supports a positive work environment and is considered appropriate behavior. Inappropriate behavior is divisive, disruptive and damaging to teamwork. Appropriate behavior builds relationships.

Training

If you are ordered as a trainee you can bring me your task book along with your red card or email it to Team13trsp@outlook.com and I will enter you into the training database for the fire. If you have questions feel free to call, text, email, or drop in.

My cell 360-701-3154, or Team13trsp@outlook.com

**Margaret Dietrich
Human Resource Specialist/Training Specialist**

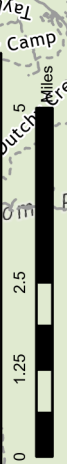


Transportation

Smith River Complex North

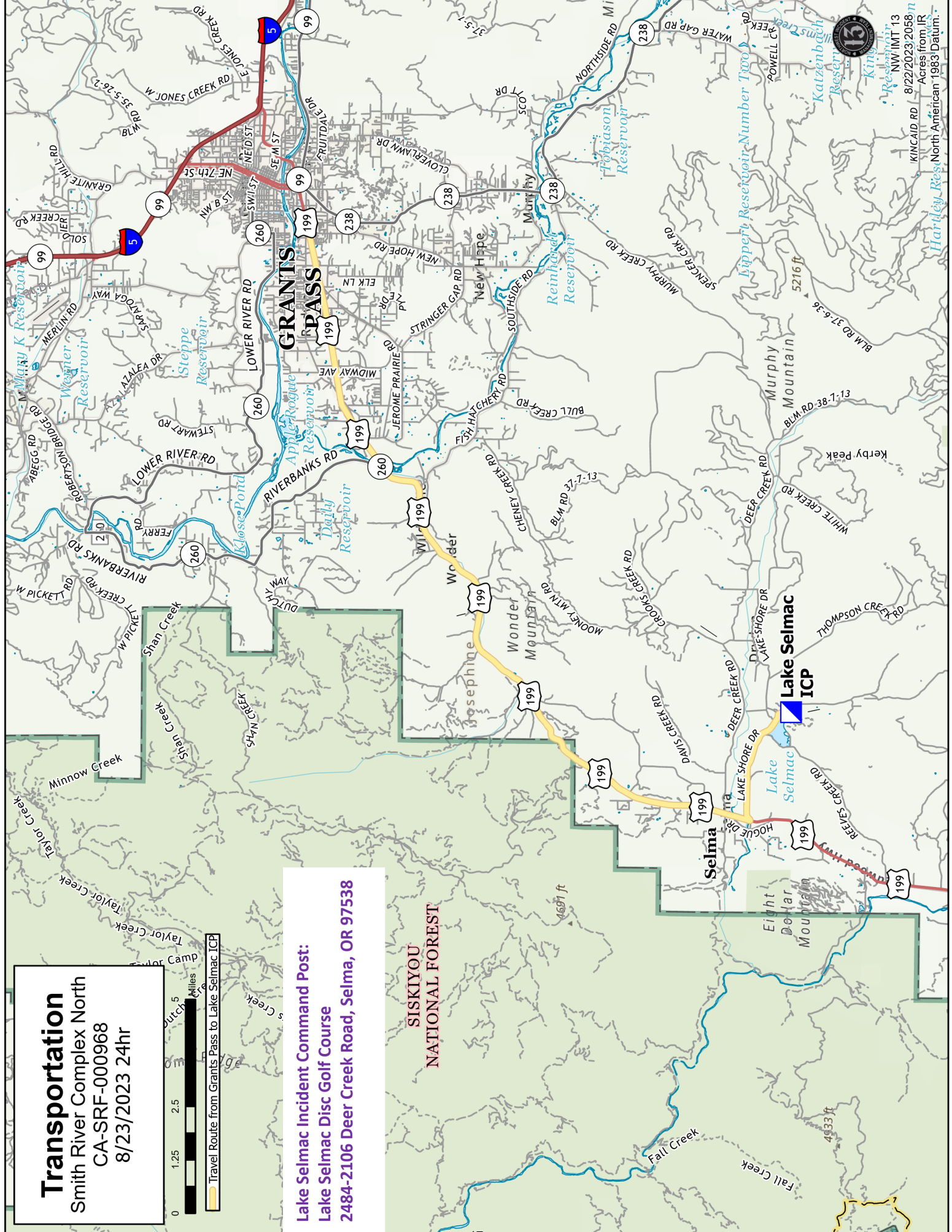
CA-SRF-000968

8/23/2023 24hr



Travel Route from Grants Pass to Lake Selmac ICP

Lake Selmac Incident Command Post:
Lake Selmac Disc Golf Course
2484-2106 Deer Creek Road, Selma, OR 97538



KINCAID RD 8/22/2023 2058
NW IMT 13
Reservoir
Acres from IR
North American 1983 Datum
Hardley Res
Katzendish
Reservoir
King
Hippert Reservoir Number Two
Powell Crk
Water Gap Rd
Northside Rd MI
238
Murry Crk
Reinhart Reservoir
Fobiason Reservoir
3151
3151
Y DR
SCOTT DR
CLOVERLAWN DR
FRUITDALE DR
NE 7th St
SE 1st St
NE 2nd St
NE 3rd St
NE 4th St
NE 5th St
NE 6th St
NE 7th St
NE 8th St
NE 9th St
NE 10th St
NE 11th St
NE 12th St
NE 13th St
NE 14th St
NE 15th St
NE 16th St
NE 17th St
NE 18th St
NE 19th St
NE 20th St
NE 21st St
NE 22nd St
NE 23rd St
NE 24th St
NE 25th St
NE 26th St
NE 27th St
NE 28th St
NE 29th St
NE 30th St
NE 31st St
NE 32nd St
NE 33rd St
NE 34th St
NE 35th St
NE 36th St
NE 37th St
NE 38th St
NE 39th St
NE 40th St
NE 41st St
NE 42nd St
NE 43rd St
NE 44th St
NE 45th St
NE 46th St
NE 47th St
NE 48th St
NE 49th St
NE 50th St
NE 51st St
NE 52nd St
NE 53rd St
NE 54th St
NE 55th St
NE 56th St
NE 57th St
NE 58th St
NE 59th St
NE 60th St
NE 61st St
NE 62nd St
NE 63rd St
NE 64th St
NE 65th St
NE 66th St
NE 67th St
NE 68th St
NE 69th St
NE 70th St
NE 71st St
NE 72nd St
NE 73rd St
NE 74th St
NE 75th St
NE 76th St
NE 77th St
NE 78th St
NE 79th St
NE 80th St
NE 81st St
NE 82nd St
NE 83rd St
NE 84th St
NE 85th St
NE 86th St
NE 87th St
NE 88th St
NE 89th St
NE 90th St
NE 91st St
NE 92nd St
NE 93rd St
NE 94th St
NE 95th St
NE 96th St
NE 97th St
NE 98th St
NE 99th St
NE 100th St

RETURN TO PLANNING OPS BY 1300 HRS
Via radio (preferred method), text, email, photo, or cell phone
Project for Next Operational Period and 48 & 72 hours in the Future

DIVISION PLANNING SHEET		Division/ Group	Name Of Division /Group Supervisor		
Next Operational Period Date:					
Operations and Resource unit text number and e-mail					
<input type="checkbox"/> - Roll over assigned Resources <input type="checkbox"/> -Excess resources <input type="checkbox"/> -Correction to 204					
E or C number	Strike Team/Task Force/ Resource Designator	Leader	Number Persons	Comments	
<input type="checkbox"/> -Request for additional Resources					
Number	Type	Resource Kind	Number	Type	Resource Kind
Operational Projection/Resource Needs/Excess Resources (48 hours):					
Operational Projection/Resource Needs/Excess Resources (72 hours):					
Comments					

MEDICAL PLAN (206 WF)

1. Incident/Project Name				2. Operational Period				
Smith River Complex North				Date/Time: 8/23 0600 – 8/24 0600				
3. Ambulance Services								
Name	Complete Address	Phone	Advanced Life Support (ALS)					
AMR	Cave Junction, OR	911	X	Yes	No			
4. Air Ambulance Services								
Name	Phone	Type of Aircraft & Capability						
Mercy Flight	1-800-903-9000 (Press 0)	Critical Care Team of Paramedic and RN 24 hr, 100'x100' LZ.						
REACH	1-800-338-4045	Critical Care Team of Paramedic and RN 24 hr, 100'x100' LZ.						
Teton Short Haul	Smith North Comms/Rogue CC	ALS, Short Haul, Daytime-Sunriver, OR						
National Guard Hoist	Smith North Comms/NWCC	24 hr, Roseburg, OR						
5. Hospitals								
Name	Degrees Decimal Minutes		Travel Time From ICP		Phone	Helipad		Level of Care
Asante 3 Rivers Medical Center (Grants Pass, OR)	Lat:	42° 25.27' N	20	90	541-472-7081	X		Level III Trauma
	Long:	123° 20.56' W	Min	Min.				
Asante Rogue Regional Medical Center (Medford, OR)	Lat:	42° 19.05' N	40	120	541-789-7367	X		Level II Trauma
	Long:	122° 50.00' W	Min	Min.				
Legacy Emanuel Hospital (Portland, OR)	Lat:	45° 32.668' N	1.5	5	503-413-4121	X		Level I Trauma Burn Center
	Long:	122° 40.293' W	Hrs.	Hrs.				
Sutter Coast Hospital (Crescent City, CA)	Lat:	41° 46.27454' N	X	2	707-464-8888		X	Level III Trauma
	Long:	124° 11.537' W		Hrs.				
Mercy Medical Center (Redding, CA)	Lat:	40° 34.14' N	1	4	530-225-6000	X		Level II Trauma
	Long:	122° 23.97' W	Hr.	Hrs.				
UC Davis Medical Center (Sacramento, CA)	Lat:	38° 33.20' N	2	6	916-734-3636	X		Level I Trauma Burn Center
	Long:	121° 27.28' W	Hrs.	Hrs.				
ICP	EMS Responders & Capability:		James Brown MEDL, EMPF 360-775-5413 Ben Meacham MEDL, EMTF 360-921-3817 Mark Notaras MEDL, EMTF 509-386-7860					
	Equipment Available on Scene:		ALS Kit, LP15 defib, O2, OTC meds					
	Medical Emergency Channel:		Smith River North Communications Plan					
	ETA for Ambulance to Scene:							
	Air:		30 – 60 min					
	Ground:		30 – 60 min					
	Approved Heli-Spot							
	Lat: Long:							
DIV I / K	EMS Responders & Capability:		Medic 1- Joel Bower 360-461-7390 ALS Kit/AED EMT 99- Jessica Kiel 206-375-7053 BLS Kit EMT 2- James Henson 208-316-4658 BLS Kit REMS 1- Dan Blaul 949-577-2663 ALS Kit/UTV Rope Rescue					
	Equipment Available on Scene:		ALS Kit, defib, O2, OTC meds					
	Medical Emergency Channel:		Smith River North Communications Plan					
	ETA for Ambulance to Scene:							
	Air:		30-60 min					
	Ground:		60 min					
	Approved Heli-Spot							
	Lat: Long:							
DIV H	EMS Responders & Capability:		Medic 2- Erica Jackson 662-588-2328 ALS Kit/AED Medic 3- Stephan Smith 636-748-0373 ALS Kit/AED EMT 1- Lisa Johnson 909-632-5999 BLS Kit					
	Equipment Available on Scene:		ALS Kit, defib, O2, OTC meds					
	Medical Emergency Channel:		Smith River North Communications Plan					
	ETA for Ambulance to Scene:							
	Air:		30-60 min					
	Ground:		60 min					
	Approved Heli-Spot							
	Lat: Long:							

Prepared By (Medical Unit Leader)	Date	Reviewed By (Safety Officer)	Date
Ben Meacham MEDL	8/22/2023	Ray Hershey SOF2	8/22/2023
Signature: <i>Ben Meacham</i>		Signature: <i>Ray Hershey</i>	

MEDICAL PLAN (ICS 206 WF)

Controlled Unclassified Information//Basic

Medical Incident Report

FOR A NON-EMERGENCY INCIDENT, WORK THROUGH CHAIN OF COMMAND TO REPORT AND TRANSPORT INJURED PERSONNEL AS NECESSARY.

FOR A MEDICAL EMERGENCY: IDENTIFY ON-SCENE INCIDENT COMMANDER BY NAME AND POSITION AND ANNOUNCE "MEDICAL EMERGENCY" TO INITIATE RESPONSE FROM IMT COMMUNICATIONS/DISPATCH.

Use the following items to communicate situation to communications/dispatch.

1. CONTACT COMMUNICATIONS / DISPATCH (Verify correct frequency prior to starting report)

Ex: "Communications, Div. Alpha. Stand-by for Emergency Traffic."

2. INCIDENT STATUS: Provide incident summary (including number of patients) and command structure.

Ex: "Communications, I have a Red priority patient, unconscious, struck by a falling tree. Requesting air ambulance to Forest Road 1 at (Lat./Long.) This will be the Trout Meadow Medical, IC is TFLD Jones. EMT Smith is providing medical care."

Severity of Emergency / Transport Priority	<input type="checkbox"/> RED / PRIORITY 1 Life or limb threatening injury or illness. Evacuation need is IMMEDIATE <i>Ex: Unconscious, difficulty breathing, bleeding severely, 2° – 3° burns more than 4 palm sizes, heat stroke, disoriented.</i> <input type="checkbox"/> YELLOW / PRIORITY 2 Serious Injury or illness. Evacuation may be DELAYED if necessary. <i>Ex: Significant trauma, unable to walk, 2° – 3° burns not more than 1-3 palm sizes.</i> <input type="checkbox"/> GREEN / PRIORITY 3 Minor Injury or illness. Non-Emergency transport <i>Ex: Sprains, strains, minor heat-related illness.</i>	
Nature of Injury or Illness & Mechanism of Injury		<i>Brief Summary of Injury or Illness (Ex: Unconscious, Struck by Falling Tree)</i>
Evacuation Request		<i>Air Ambulance / Short Haul/Hoist Ground Ambulance / Other</i>
Patient Location		<i>Descriptive Location & Lat. / Long. (WGS84)</i>
Incident Name		<i>Geographic Name + Medical (Ex: Trout Meadow Medical)</i>
On-Scene Incident Commander		<i>Name of on-scene IC of Incident within an Incident (Ex: TFLD Jones)</i>
Patient Care		<i>Name of Care Provider (Ex: EMT Smith)</i>

3. INITIAL PATIENT ASSESSMENT: Complete this section for each patient as applicable (start with the most severe patient)

Patient Assessment: See IRPG PAGE 106

Treatment:

4. EVACUATION PLAN:

Evacuation Location (if different): (Descriptive Location (drop point, intersection, etc.) or Lat. / Long.) Patient's ETA to Evacuation Location:

Helispot / Extraction Site Size and Hazards:

5. ADDITIONAL RESOURCES / EQUIPMENT NEEDS:

Example: Paramedic/EMT, crews, immobilization devices, AED, oxygen, trauma bag, IV/fluid(s), splints, rope rescue, wheeled litter, HAZMAT, extrication

6. COMMUNICATIONS: Identify State Air/Ground EMS Frequencies and Hospital Contacts as applicable

Function	Channel Name/Number	Receive (RX)	Tone/NAC *	Transmit (TX)	Tone/NAC *
COMMAND					
AIR-TO-GRND					
TACTICAL					

7. CONTINGENCY: Considerations: If primary options fail, what actions can be implemented in conjunction with primary evacuation method? Be thinking ahead..

8. ADDITIONAL INFORMATION: Updates/Changes, etc.

REMEMBER: Confirm ETAs of resources ordered. Act according to your level of training. Be Alert. Keep Calm. Think Clearly. Act Decisively.