

*\*\* CORRECTED \*\**

# INCIDENT ACTION PLAN SMITH RIVER COMPLEX - SOUTH

CA-SRF-000968

P5QJ6L



## OPERATIONAL PERIOD

8/23/2023 0700

to

8/24/2023 0700

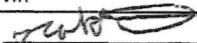


THE GREAT FORTY

...



## ORGANIZATION ASSIGNMENT LIST (ICS 203)

<b>1. Incident Name:</b> SMITH RIVER COMPLEX - SOUTH		<b>2. Operational Period: Date From:</b> 8/23/2023 Time From: 0700		<b>Date To:</b> 8/24/2023 <b>Time To:</b> 0700	
<b>3. Incident Commander(s) and Command Staff:</b>			<b>7. Operation Section:</b>		
IC/UC's	Tom Clemo / Stephen Fillmore(t)	Day Operations	Scott Grasmick / Nick Cleary(t)		
Deputy	Jon Lucas	Strategic Operations	Travis Ederer		
Safety Officer	R. Bertram / P. Cockrum / S. Davis(t)	Planning Operations	Tom Himmelrich		
Information Officer	T. Stokesberry / T. Engberg / L. Walker				
Liaison Officer	R. Cablayan / J. Jones / B. Neumann / A. Widling	<b>Branch</b>	<b>V</b>	<b>Shaun Craig / Erick D'Amico(t)</b>	
		Division/Group	A	Rick Dykhouse	
		Division/Group	B	Jere Classay	
		Division/Group	<del>ASO</del>	Patrick Bye / Scott Roeber(t)	
<b>4. Agency/Organization Representatives:</b>					
Agency/Organization	Name	Division/Group	<del>SOUTH STRUCTURE</del>	Brett Hildebrand / <b>SHIFFERT</b>	
SRF Forest Supervisor	Ted McArthur	Division/Group	<del>DIVIDE SG</del>	<b>TODD / ROBERTS (T)</b>	
Rogue/Siskiyou AREPs	D. Quinones / J. Winn / A. Watson	Division/Group			
SRF Agency Admin	K. Allen / A. Skowlund	<b>Branch</b>	<b>XX</b>	<b>Joe Tieso</b>	
CAL OES (ESC)	Beck Blair	Division/Group	MM	Ron Oatman / Josh Fudge(t)	
CAL OES FIRE	Van Arroyo	Division/Group	PP	Corey Stowe	
CAL Fire	Garrett Dean	Division/Group	SS	Unstaffed	
CHP	Lt. Pete Roach	Division/Group	VV	Michael Willardson	
Del Norte CO. OEM	Deborah Otenberg	Division/Group			
Crescent City Manager	Eric Wier	<b>Branch</b>			
SRF Sheriff Office	Jennifer Wooley	Division/Group			
Del Norte Sheriff LEO	Jon Maxwell	Division/Group			
Crescent City Police Chief	Richard Griffin	Division/Group			
Crescent City Fire Chief	Kevin Carey	Division/Group			
NPS LEO	Daniel Owens	<b>Branch</b>			
Bureau of Indian Affairs	Nathan Gogna	Division/Group	NIGHT	Ryan Edmondson	
Tolowa Tribe	Amanda O'Connell	Division/Group			
Red Cross	Mary Dormind	Division/Group			
Resource Advisor	Donna Peppin	Division/Group			
<b>5. Planning Section:</b>			Division/Group		
Chief	John Germanetti	<b>Branch</b>			
Deputy	Robert Kovach	Division/Group			
Resource Unit	Hudley/Roberts/Nahas(t)/Sketo(t)	Division/Group			
Situation Unit	M. Held / J. Hunter / Z. Jackson(t)	Division/Group			
Demobilization Unit	Mike Dunkel	Division/Group			
GISS	Emily Dolhanski / Dianna Beasley	Division/Group			
FBAN	Nic Elmquist / Jennifer Anderson(t)	<b>Air Operations Branch</b>		<b>Director:</b>	<b>John Crotty</b>
IMET	James White	Air Support Group Supervisor		Al Driesbach	
Training Specialist	John Leblanc	Air Tactical Group Supervisor			
Check-In Recorder	David Charron(t)/Margot Leech(t)	Helibase Manager			
<b>6. Logistics Section</b>					
Chief	Bob Feldtz / Mike Farmer(t)	<b>8. Finance/Administration Section</b>			
Facilities Unit	Cassie Buckley(t)	<b>Chief</b>	Lisa Dow		
Ground Support Unit	Kevin Palm	<b>Time Unit</b>	Amanda Folendorf / Tiffanie Sachse-Santi		
Communications Unit	Glendon Chan / Chris Oliver(t)	<b>Personnel Time</b>	Ryan Bridgen / Terese Toomey(t)		
Medical Unit	J. Emerson/M. Lencioni/M. Caffey(t)	<b>Comp/Claims Unit</b>	Tina Weaver		
ITSS	Marty Cohn	<b>Cost Unit</b>	Sandra Tarvin		
<b>Prepared By: Name:</b>	Robert Kovach	<b>Position/Title:</b>	PSC	<b>Signature:</b> 	
<b>ICS 203</b>		<b>Date/Time:</b>	8/22/2023 2300 hours		



# Fire Weather Forecast



**FORECAST NO: 6**  
**PREDICTION FOR: Wednesday-Thursday**  
**DATE: August 23<sup>rd</sup>, 2023**  
**FORECAST ISSUED: 1800 August 22<sup>nd</sup>, 2023**

**FIRE: Smith River Complex South**  
**UNIT: CA-SRF-968**  
**IMET: James White (240-778-5316)**  
**SIGNED: *James White***

**WEATHER DISCUSSION:** \* Valley elevations = 400ft (Gasquet), Ridgetop elevations = 3500 ft (Cold Springs) \*  
 High pressure will begin to build in today, kicking off a brief but marked change in weather. Temperatures will reach back near 80 where smoke allows with RH dropping back near 40%, especially on ridgetops. Winds will remain mostly gentle and terrain driven. Gusty, dry northeast winds will build back in quickly tonight around 2100 with high pressure helping push them lower near 1500 ft. These winds will shut off early by 0400 with generally hotter, and drier weather on Thursday. Greater instability Thursday will likely allow for slightly better mixing along with a slight chance (10%) of isolated thunder.

**TODAY:**

**WEATHER:** Clear. Heavy smoke in valleys near the fire in the morning.  
**MAX TEMP:** Valleys: 75-80°F (2-4°F ↑)      **MIN RH:** Valleys: 38-43% (1-3% ↓)  
 Ridgetops: 72-77°F (4-7°F ↑)      Ridgetops: 36-41% (15-25% ↓)  
**CHC WTG RAIN:** 0%      **LAL:** 1      **SFC VIS:** 1-2 miles, better west in the afternoon

**WINDS:** Valleys: Morning downslope 2-4 mph afternoon upslope 3-6 mph.  
**(20 feet)** Ridgetops: Morning northeast 6-10 mph, northwest 4-8 mph gusts to 16 mph.

**MIXING HEIGHT:** Rising to 8,000 ft by 1300.      **TRANSPORT WIND:** Northwest 8-12 mph.

**TONIGHT:**

**WEATHER:** Mostly clear. Strong thermal belt 1500 to 3500 ft. Strongest winds 2100 to 0200  
**MIN TEMP:** Valleys: 55-60° (2-4°F ↑)      **MAX RH:** Valleys: 86-91% (3-6% ↓)  
 Ridgetops: 62-68° (4-8°F ↑)      Ridgetops: 35-45% (5-10% ↓)  
**CHC WTG RAIN:** 0%      **LAL:** 1      **SFC VIS:** 1-2 miles, clearer east of the fire early morning

**WINDS:** Valleys: Downslope 2-4 mph.  
**(20 FEET)** Ridgetops: Northeast 10-15 mph, infrequent gusts to 25 mph.

**MIXING HEIGHT:** Dropping to 1,500 ft by 2200.      **TRANSPORT WIND:** Northeast 10-14 mph.

**THURSDAY:**

**WEATHER:** Clear. Heavy smoke in valleys near the fire in the morning. Very slight (10%) risk of thunderstorms in the afternoon. Any thunder would accompany dangerous lightning and erratic outflow to 40 mph.  
**MAX TEMP:** Valleys: 75-80°F (Little Change)      **MIN RH:** Valleys: 38-43% (2-4% ↓)  
 Ridgetops: 75-80°F (2-4°F ↑)      Ridgetops: 33-38% (3-6% ↓)  
**CHC WTG RAIN:** 0%      **LAL:** 2      **SFC VIS:** 1-2 miles, better west in the afternoon

**WINDS:** Valleys: Morning downslope 2-4 mph afternoon upslope 3-6 mph.  
**(20 feet)** Ridgetops: Morning northeast 8-12 mph, northwest 4-8 mph gusts to 16 mph.

**MIXING HEIGHT:** Rising to 11,000 ft by 1100.      **TRANSPORT WIND:** Southwest 8-12 mph.

**EXTENDED OUTLOOK:** High pressure will be short lived with a persistent trough forming off the coast of central California bringing regular, strong marine influence to the fire area this weekend into early next week. This will bring generally cooler and moister conditions alongside mostly gentle terrain winds.

—————→  
 Nearby Weather Observations



FIRE BEHAVIOR FORECAST			
<b>Incident Name:</b> SMITH RIVER COMPLEX - SOUTH		<b>Operational Period:</b> Date From: 8/23/23 Date To: 8/24/23 Time From: 0700 Time To: 0700	
<b>Forecast Number:</b> 06	<b>Type of Fire:</b> Wildfire	<b>Unit:</b> Six Rivers National Forest - Gasquet District	
INPUTS			
<b>WEATHER SUMMARY:</b>  ***See Fire Weather Forecast***			
<b>FUELS SUMMARY:</b> Due to the below normal amount of precipitation, live fuel moisture levels did not recover this spring, making the shrubs readily available for consumption. There are abundant snag patches within the fire scars; Biscuit (2002), Coon (2015), Eclipse Complex (2017) and Slater (2020). The fuel moistures of the manzanita are around 110% and the 1000-hour fuels 9%, below critical levels. Given the dryness of the vegetation, there is abundant available fuels to continue growth of all uncontained fires within the complex.			
OUTPUTS			
<b>FIRE BEHAVIOR</b>			
<b>GENERAL:</b>  We are currently in what is peak of fire season for this area of the state. Historically, the fuels along the riparian areas have been resistant to burning, but that is not the case this year. Under smoky conditions, the fire will consume the heavy dead surface fuels and have isolated tree torching where there is a higher fuel load under the timber canopy. Roll-out will continue to be a driver of growth in these areas. When the fire is exposed to a stronger wind or gets established on a steep slope with aligned fuels and topography, expect rapid rates of spread with sustained crown runs and moderate range spotting. Adding to the complexity of the fire environment is a daily wind shift as it turns westerly during the heat of the day and easterly overnight with limited humidity recovery on upper elevations.  <p style="text-align: center;"><b>Fire Danger Indices – 2022 IRPG Page 39</b> Energy Release Component (ERC): 90th August Average ERC Percentile: 85th 2020 Slater Fire Large growth days (September 10th) - ERC Percentile: 99th Peak Burn Period (1400 – 2000) - Probability of Ignition (PIG): 40% (shaded), 60% (unshaded)</p>			
<b>SPECIFIC:</b>  <b>Branch V:</b> The afternoon westerly flow will be favorable for the Corral fire as it burns away from the 305 road. The Kelly fire continues to fill in on both flanks towards Patrick Creek. Pay special attention for gusty and erratic afternoon winds along the river and Hwy 199 corridor.  <b>Branch XX:</b> The portion of the Kelly fire south of the highway continues to have plenty of heat and will continue to burn to the south & west. Fire will continue to back against the afternoon westerly winds and down towards Hwy 199. The Coon & Kelly fires will likely grow together today. Think about your access and egress into your work locations, taking into consideration the afternoon westerly winds.  <b>**Night shift**:</b> Predicted high winds late tonight with gusts to 20 mph above 2000' with alignment can result in increased fire spread, especially at the upper elevations.			
<b>AIR OPERATIONS:</b> Sunrise 0604, Last Light 2033 (Daylength: losing 2 min, 35 sec each day)			
Smoke will continue to be an issue for the foreseeable future. However, the afternoon westerly flow should provide another day of good conditions on the western portion of the complex.			
<b>SAFETY:</b>			
Monitor your escape route throughout the shift. Wind can produce prolific spotting, which could block your egress. Place lookouts that know your location and your escape route.			
<b>Prepared by Fire Behavior Analyst:</b> Nic Elmquist/Jenn Anderson (t)		<b>Signature:</b> <i>Nic Elmquist/Jenn Anderson</i>	
		Date/Time: 8/22/23 at 1800	

## ASSIGNMENT LIST (ICS 204 WF)

CONTROLLED UNCLASSIFIED INFORMATION//BASIC

<b>1. Incident Name:</b> <b>SMITH RIVER COMPLEX - SOUTH</b>	<b>2. Operational Period:</b> Date From: 08/23/23    Date To: 08/24/23 Time From: 0700    Time To: 0700	<b>3. Branch</b> <b>V</b>	<b>Division</b> <b>A</b>
<b>4. Operations Personnel:</b>		Page 1 of 1	Alpha

Operations Section Chief: <b>Scott Grasmick / Nick Cleary(t)</b> Branch Director: <b>Shaun Craig / Erick D'Amico(t)</b> Division/Group Supervisor: <b>Rick Dykhouse</b>	Operations: <b>Tom Himmelrich</b> Branch Safety: Air Attack:
---	--

5. Resources Assigned:		**Shaded resources below are 24 hour**					
Resource Identifier	ALS	LWD	Leader	Personnel	Request #	Hours	Reporting Location
HC1 VENTANA IHC		9/4	HAROLD COOK	22	C-32	0700-1900	WARD FIELD CAMP
HC2IA BLM FOLSOM VETS		8/29	ROGER HOOPER	17	C-6	0700-1900	WARD FIELD CAMP
TF SNF 2023		8/30	RON SANDLING	18	E-312	0700-1900	WARD FIELD CAMP
ENG3 PVT NATIONAL WILDLAND 142		9/3	JASON DAVIS	3	E-142	0700-1900	WARD FIELD CAMP
ENG3 PVT SCHOLLS 148		9/3	BRIAN RINGEN	3	E-148	0700-1900	WARD FIELD CAMP
ENG4 PVT FIRECO 136		9/2	TYLER NAIL	2	E-136	0700-1900	WARD FIELD CAMP
ENG6 PVT VALKYRIE 138		9/2	CHARLES REESE	3	E-138	0700-1900	WARD FIELD CAMP
ENG6 PVT HB FORESTRY 211		9/2	AARON GONZALEZ	3	E-211	0700-1900	WARD FIELD CAMP
DO22 PVT EVANS BROTHERS 169	→ B	9/2	TOM EVANS	1	E-169	0700-1900	WARD FIELD CAMP
DO22 PVT GARMAN CONT 172	→ B	9/2	DOUG GRIDER	2	E-172	0700-1900	WARD FIELD CAMP
DO22 PVT SMOKEY MTN 173	→ GSP	9/2	IKE TOMLINSON	2	E-173	0700-1900	WARD FIELD CAMP
DO22 PVT JUNGWORTH 171	→ GSP	9/2	PETE BROWN	2	E-171	0700-1900	WARD FIELD CAMP
WTT2 PVT NATIONAL 165		9/2	AARON PHILLIPS	2	E-165	0700-1900	WARD FIELD CAMP
FMOD PAC RIDGELINE 156		9/3	ERNIE ADAMS	2	O-156	0700-1900	WARD FIELD CAMP
HEQB(T) NETZ	→ B	9/2	PAUL NETZ	1	O-175	0700-1900	WARD FIELD CAMP

**6. Work Assignments:**  
 Construct direct and indirect hand and dozer lines where feasible to maximize suppression efforts and defend the Highway 199 corridor and the adjacent communities.

**7. Special Instructions:**  
 -Be aware of retardant avoidance areas, mine shafts and naturally occurring asbestos.  
 -Maintain awareness of fire conditions affecting road systems in your area that might be a primary escape route and establish secondary egress to safe area. Ensure trigger points are established and re-evaluated throughout the shift.  
**Safety Officers assigned to Branch V:** Ray Franco and Shaun Davis

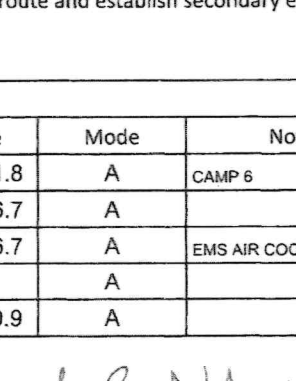
**8. Communications**

Name	Ch	Function	Rx Freq	Rx Tone	Tx Freq	Tx Tone	Mode	Notes
NIFC C3	1	COMMAND	170.4250	(T3) 131.8	168.0750	(T3) 131.8	A	CAMP 6
NIFC T3	7	TACTICAL	168.6000	(T3) 131.8	168.6000	(T3) 131.8	A	
CALCORD	15	TACTICAL	156.0750	(T6) 156.7	156.0750	(T6) 156.7	A	EMS AIR COORDINATION
A/G TAC	14	A/G TAC	169.4875	0.0	169.4875	0.0	A	
AIRGUARD	16	AIRGUARD	168.6250	0.0	168.6250	(T1) 110.9	A	

<b>9. Prepared by: Name:</b>	Hudley/Roberts/Nahas(t)/Sketo(t)	RESL	Signature:
ICS 204	Date/Time: 8/22/2023	2200	Personnel Count: 83

## ASSIGNMENT LIST (ICS 204 WF)

CONTROLLED UNCLASSIFIED INFORMATION//BASIC

<b>1. Incident Name:</b> <b>SMITH RIVER COMPLEX - SOUTH</b>		<b>2. Operational Period:</b> Date From: 08/23/23    Date To: 08/24/23 Time From: 0700    Time To: 0700				<b>3. Branch</b> <b>V</b>		<b>Division</b> <b>B</b>	
						Page 1 of 1		Bravo	
<b>4. Operations Personnel:</b> Operations Section Chief: <b>Scott Grasmick / Nick Cleary(t)</b> Branch Director: <b>Shaun Craig / Erick D'Amico(t)</b> Division/Group Supervisor: <b>Jere Classay</b>						Operations: <b>Tom Himmelrich</b> Branch Safety: Air Attack:			
<b>5. Resources Assigned:</b>		**Shaded resources below are 24 hour**							
Resource Identifier	ALS	LWD	Leader	Personnel	Request #	Hours	Reporting Location		
HC2 PVT PACIFIC OASIS 24		9/2	CASEY DOWNS	20	C-24	0700-1900	WARD FIELD CAMP		
ENG3 PVT NESBITTS 135		9/2	VAS NAIKER	3	E-135	0700-1900	WARD FIELD CAMP		
ENG4 PVT CONTRACT WATER 113		9/3	MIKE MUSIA	3	E-113	0700-1900	WARD FIELD CAMP		
ENG4 PVT ARCHER 123		9/2	JAMES HARTER	3	E-123	0700-1900	WARD FIELD CAMP		
ENG4 PVT FLASHBACK 149		9/2	TREVOR MCWATERS	3	E-149	0700-1900	WARD FIELD CAMP		
ENG4 PVT J3 205		9/2	CHRIS DESROSIER	3	E-205	0700-1900	WARD FIELD CAMP		
ENG4 PVT GRIZ ONE 129		9/4	JOHN CRAFT	3	E-129	0700-1900	WARD FIELD CAMP		
ENG6 PVT FLORES 257		9/4	SHAD LOFONTISE	3	E-257	0700-1900	WARD FIELD CAMP		
DO22 PVT LEESVILLE 293		9/4	NATE RUBINI	2	E-293	0700-1900	WARD FIELD CAMP		
DO22 PVT LONESTAR 170		9/2	ROBERT ASCHERIN	2	E-170	0700-1900	WARD FIELD CAMP		
FOBS McCREA		8/30	DAVID McCREA	1	Q-159	0700-1900	WARD FIELD CAMP		
FOBS RIVAS		8/30	JEFF RIVAS	1	Q-160	0700-1900	WARD FIELD CAMP		
EMPF LOPEZ	X	9/1	MIGUEL LOPEZ	1	O-96	0700-1900	WARD FIELD CAMP		
EMTF EINEM		9/1	LORI EINEM	1	O-102	0700-1900	WARD FIELD CAMP		
DO22 PVT EVANS Bass 169		9/2	Tom EVANS	1	E-169				
DO22 PVT GARDNER Unit 172		9/2	Doug Gardner	2	E-172				
HEQB(L) NETZ		9/2	Raul NETZ	1	O-175				
<b>6. Work Assignments:</b> Construct direct and indirect fire lines and prepare roadways where feasible to maximize suppression efforts and defend from the Highway 199 corridor and the adjacent communities North to the B/D break.									
<b>7. Special Instructions:</b> -Be aware of retardant avoidance areas, mine shafts and naturally occurring asbestos. -Maintain awareness of fire conditions affecting road systems in your area that might be a primary escape route and establish secondary egress to safe area. Ensure trigger points are established and re-evaluated throughout the shift. Safety Officers assigned to Branch V: Ray Franco and Shaun Davis									
<b>8. Communications</b>									
Name	Ch	Function	Rx Freq	Rx Tone	Tx Freq	Tx Tone	Mode	Notes	
NIFC C3	1	COMMAND	170.4250	(T3) 131.8	168.0750	(T3) 131.8	A	CAMP 6	
VFIRE 22	11	TACTICAL	154.2650	(T6) 156.7	154.2650	(T6) 156.7	A		
CALCORD	15	TACTICAL	156.0750	(T6) 156.7	156.0750	(T6) 156.7	A	EMS AIR COORDINATION	
A/G TAC	14	A/G TAC	169.4875	0.0	169.4875	0.0	A		
AIRGUARD	16	AIRGUARD	168.6250	0.0	168.6250	(T1) 110.9	A		
<b>9. Prepared by: Name:</b>		Hudley/Roberts/Nahas(t)/Sketo(t)			RESL		Signature: 		
ICS 204		Date/Time: 8/22/2023		2200		Personnel Count: 49			



## ASSIGNMENT LIST (ICS 204 WF)

CONTROLLED UNCLASSIFIED INFORMATION//BASIC

<b>1. Incident Name:</b>	<b>2. Operational Period:</b>	<b>3. Branch</b>	<b>Division</b>
<b>SMITH RIVER COMPLEX - SOUTH</b>	Date From: 08/23/23    Date To: 08/24/23 Time From: 0700    Time To: 0700	<b>V</b>	<b>D</b>

<b>4. Operations Personnel:</b>	Page 1 of 1    Delta
Operations Section Chief: <b>Scott Grasmick / Nick Cleary(t)</b> Branch Director: <b>Shaun Craig / Erick D'Amico(t)</b> Division/Group Supervisor: <b>Patrick Byde / Scott Roeber(t) 8/29</b>	Operations: <b>Tom Himmelrich</b> Branch Safety: Air Attack:

<b>5. Resources Assigned:</b>	<b>**Shaded resources below are 24 hour**</b>						
Resource Identifier	ALS	LWD	Leader	Personnel	Request #	Hours	Reporting Location
HC2I BIA FORT APACHE		9/3	BRIAN QUINTERO	22	C-25	0700-1900	WARD FIELD CAMP
HC2I NLTX SLIDE MOUNTAIN 7		9/3	JOSH HIGGINS	19	C-7	0700-1900	WARD FIELD CAMP
HC2 PVT NORTH PACIFIC FORESTRY 96		8/29	JEFF ANDERSON	20	C-96	0700-1900	WARD FIELD CAMP
HC2 PVT JC OROZCO 1		9/2	JAMAL KWIATKOWSKI	20	C-1	0700-1900	WARD FIELD CAMP
ENG3 LPF 316		8/29	KYLE ARMSTRONG	5	E-282	0700-1900	WARD FIELD CAMP
ENG3 STF 314		8/27	ANDREW KAHANA	5		0700-1900	WARD FIELD CAMP
ENG3 PVT TORRES E3		9/2	ADOLFO ESPINO	3	E-218	0700-1900	WARD FIELD CAMP
ENG4 PVT DRAGON FIGHTERS 141		9/3	MIKE SPECHT	3	E-141	0700-1900	WARD FIELD CAMP
ENG5 PVT GLOBAL WILDFIRE 143		9/3	TJ BURKEY	3	E-143	0700-1900	WARD FIELD CAMP
ENG5 PVT MONTROSE 144		9/3	DIEGO ALVAREZ	3	E-144	0700-1900	WARD FIELD CAMP
ENG6 PVT SWFS 112		9/3	ROBERT STIGEN	3	E-112	0700-1900	WARD FIELD CAMP
ENG6 PVT C&K WILD 116		9/2	AARON GONZALEZ	3	E-116	0700-1900	WARD FIELD CAMP
ENG6 PVT FENIX 117		9/2	SUZANNE FLYNN	3	E-117	0700-1900	WARD FIELD CAMP
WTT2 PVT DYNAMITE 168		9/3	MICHAEL RUDOLPH	2	E-168	0700-1900	WARD FIELD CAMP
EMPF MUNDS	X	9/1	NOAH MUNDS	1	O-91	0700-1900	WARD FIELD CAMP
EMPF QUINTANAR	X	9/1	ARMEN QUINTANAR	1	O-94	0700-1900	WARD FIELD CAMP
EMTF HAPKE		9/1	MIKE HAPKE	1	O-105	0700-1900	WARD FIELD CAMP

**6. Work Assignments:**  
 Construct direct handline where feasible to maximize suppression efforts and limit Corral and Diamond fire spread. Where possible, utilize tactics to minimize the impact to natural, and cultural resources.

**7. Special Instructions:**  
 -Be aware of retardant avoidance areas, mine shafts and naturally occurring asbestos.  
 -Maintain awareness of fire conditions affecting road systems in your area that might be a primary escape route and establish secondary egress to safe area. Ensure trigger points are established and re-evaluated throughout the shift.  
**Safety Officers assigned to Branch V:** Ray Franco and Shaun Davis

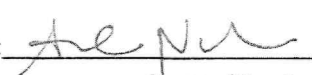
**8. Communications**

Name	Ch	Function	Rx Freq	Rx Tone	Tx Freq	Tx Tone	Mode	Notes
NIFC C3	1	COMMAND	170.4250	(T3) 131.8	168.0750	(T3) 131.8	A	CAMP 6
NIFC T1	6	TACTICAL	168.0500	(T3) 131.8	168.0500	(T3) 131.8	A	
CALCORD	15	TACTICAL	156.0750	(T6) 156.7	156.0750	(T6) 156.7	A	EMS AIR COORDINATION
A/G TAC	14	A/G TAC	169.4875	0.0	169.4875	0.0	A	
AIRGUARD	16	AIRGUARD	168.6250	0.0	168.6250	(T1) 110.9	A	

<b>9. Prepared by: Name:</b>	Hudley/Roberts/Nahas(t)/Sketo(t)	RESL	Signature:
ICS 204	Date/Time: 8/22/2023	2200	Personnel Count: 117

## ASSIGNMENT LIST (ICS 204 WF)

CONTROLLED UNCLASSIFIED INFORMATION//BASIC

<b>1. Incident Name:</b> SMITH RIVER COMPLEX - SOUTH		<b>2. Operational Period:</b> Date From: 08/23/23    Date To: 08/24/23 Time From: 0700    Time To: 0700				<b>3. Branch</b> <b>Division</b> V    CASQUE SOUTH STRUCTURE		
<b>4. Operations Personnel:</b> Operations Section Chief: Scott Grasmick / Nick Cleary(t) Branch Director: Shaun Craig / Erick D'Amico(t) Division/Group Supervisor: Brett Hildebrand / SHIFFERS (T)					Operations: Tom Himmelrich Branch Safety: Air Attack:			
<b>5. Resources Assigned:</b>		**Shaded resources below are 24 hour**						
Resource Identifier	ALS	LWD	Leader	Personnel	Request #	Hours	Reporting Location	
HC2 PVT LAVA RIVER C-11		9/1	BERTHA CHAVEZ	20	C-23	0700-1900	WARD FIELD CAMP	
HC2 PVT NORTH PACIFIC FORESTRY C-2		8/30	ANDREW KENT	20	C-2	0700-1900	WARD FIELD CAMP	
EST1 OES 2801A **24hrs**		9/3	TY BECERRA	22	E-240	0700-0700	WARD FIELD CAMP	
EST3 XNA 2100C **24hrs**	X	9/1	ERIK MORTIMORE	22	E-88	0700-0700	WARD FIELD CAMP	
EST3 OES 0803C **24hrs**		9/1	PETE GONZALEZ	18	E-87	0700-0700	WARD FIELD CAMP	
EST1 OES 2802A		9/3	JOSE CASTREJON	21	E-241	0700-1900	WARD FIELD CAMP	
EST1 OES 2803A		9/3	JOEL ABELSON	21	E-242	0700-1900	WARD FIELD CAMP	
EST1 OES 5805A		9/4	RAYMOND RUSSELL	21	E-244	0700-1900	WARD FIELD CAMP	
EST6 OES 2861F		8/28	BRIAN METCHO	19	E-270	0700-1900	WARD FIELD CAMP	
ENG1 CRT E-5112		9/3	BEAU SMITH	4		0700-1900	WARD FIELD CAMP	
ENG4 PVT INBOUND 119		9/2	EVAN RUSSELL	3	E-119	0700-1900	WARD FIELD CAMP	
ENG4 PVT J3 208		9/2	JOSE ARIZMENDI	3	E-208	0700-1900	WARD FIELD CAMP	
ENG4 PVT J3 210		9/2	ANDRE KELLEY	3	E-210	0700-1900	WARD FIELD CAMP	
ENG4 PVT WILDFIRE 219		9/2	MIKE FOSTER	3	E-219	0700-1900	WARD FIELD CAMP	
ENG5 PVT FORREST 248		9/3	AARON VELA	3	E-248	0700-1900	WARD FIELD CAMP	
ENG6 PVT Y2 124		9/3	STANLEY VINCENT	3	E-124	0700-1900	WARD FIELD CAMP	
ENG6 PVT TIMBERLINE 140		9/3	JEROME ANTONIO	3	E-140	0700-1900	WARD FIELD CAMP	
WTS1 CRT WT-5159		9/3	JASON BORGES	2		0700-1900	WARD FIELD CAMP	
CHP2 PVT NORTH ZONE 227		9/3	DARRIUS DEMERY	3	E-227	0700-1900	WARD FIELD CAMP	
CHP2 PVT NORTH ZONE 228		9/3	KOBE HOUSTON	3	E-228	0700-1900	WARD FIELD CAMP	
TFLD ILLINGWORTH		9/4	GAVIN ILLINGWORTH	1	O-252	0700-1900	WARD FIELD CAMP	
<b>6. Work Assignments:</b> Construct direct handline wherever feasible to maximize suppression efforts to minimize impacts to structures and Highway 199. Prepare and defend structures in Highway 199 corridor and adjacent communities. Conduct damage assessment in areas that the fire has impacted. DOZ2 PVT ILLINGWORTH 171    9/2    PETERSON 2 E171 DOZ2 PVT SMOKEY MTR 173    9/3    ILLINGWORTH 2 E173								
<b>7. Special Instructions:</b> -Be aware of retardant avoidance areas, mine shafts and naturally occurring asbestos. -Maintain awareness of fire conditions affecting road systems in your area that might be a primary escape route and establish secondary egress to safe area. Ensure trigger points are established and re-evaluated throughout the shift. Safety Officers assigned to Branch V: Ray Franco and Shaun Davis								
<b>8. Communications</b>								
Name	Ch	Function	Rx Freq	Rx Tone	Tx Freq	Tx Tone	Mode	Notes
NIFC C3	1	COMMAND	170.4250	(T3) 131.8	168.0750	(T3) 131.8	A	CAMP 6
VFIRE 24	12	TACTICAL	154.2725	(T6) 156.7	154.2725	(T6) 156.7	A	SOUTH STRUCTURE/NIGHT
CALCORD	15	TACTICAL	156.0750	(T6) 156.7	156.0750	(T6) 156.7	A	EMS AIR COORDINATION
A/G TAC	14	A/G TAC	169.4875	0.0	169.4875	0.0	A	
AIRGUARD	16	AIRGUARD	168.6250	0.0	168.6250	(T1) 110.9	A	
<b>9. Prepared by: Name:</b> Hudley/Roberts/Nahas(t)/Sketo(t)			RESL		Signature: 			
ICS 204		Date/Time: 8/22/2023    2200			Personnel Count: 218			

NIMS IAP

CONTROLLED UNCLASSIFIED INFORMATION//BASIC

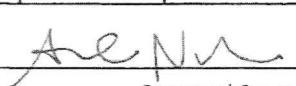
## ASSIGNMENT LIST (ICS 204 WF)

CONTROLLED UNCLASSIFIED INFORMATION//BASIC

<b>1. Incident Name:</b>		<b>2. Operational Period:</b>				<b>3. Branch</b>		<b>Division</b>	
SMITH RIVER COMPLEX - SOUTH		Date From: 08/23/23		Date To: 08/24/23		XX		MM	
		Time From: 0700		Time To: 0700		Page 1 of 2		Mike-Mike	
<b>4. Operations Personnel:</b>									
Operations Section Chief: <b>Scott Grasmick / Nick Cleary(t)</b>					Operations: <b>Tom Himmelrich</b>				
Branch Director: <b>Joe Tieso</b>					Branch Safety:				
Division/Group Supervisor: <b>Ron Oatman / Josh Fudge(t)</b>					Air Attack:				
<b>5. Resources Assigned:</b>			**Shaded resources below are 24 hour**						
Resource Identifier	ALS	LWD	Leader	Personnel	Request #	Hours	Reporting Location		
HC1 GERONIMO IHC		9/3	JULIUS HOSTETLER	20	C-27	0700-1900	WARD FIELD CAMP		
HC1 TAHOE IHC		9/3	GERMAN GUERRERO	21	C-28	0700-1900	WARD FIELD CAMP		
HC2 PVT BLUE MOUNTAIN 5		9/2	JUAN ESPINOSA	20	C-5	0700-1900	WARD FIELD CAMP		
HC2 PVT WEST COAST 16		9/3	JUAN RAMOS	20	C-16	0700-1900	WARD FIELD CAMP		
ENG3 SQF 31		8/30	JOSE RIVIERA	5	E-281	0700-1900	WARD FIELD CAMP		
ENG3 GENESEE FIRE 932		8/30	JOSH BOYLES	5	E-1	0700-1900	WARD FIELD CAMP		
ENG3 PVT OUTBACK 249		8/30	JARED ANDRA	3	E-249	0700-1900	WARD FIELD CAMP		
ENG4 PVT IDAHO TRAILBLAZERS 157		9/1	SCOTT LEFFLER	3	E-157	0700-1900	WARD FIELD CAMP		
ENG4 PVT IDAHO TRAILBLAZERS 159		9/1	OSVALDO ARENAS	3	E-159	0700-1900	WARD FIELD CAMP		
ENG4 PVT TETON 221		9/3	CASSY JOHNSON	4	E-221	0700-1900	WARD FIELD CAMP		
ENG6 WHISPERING PINES E66		8/30	GABE DONNEY	3	E-280	0700-1900	WARD FIELD CAMP		
ENG6 SMITH RIVER 9167- DEMOB		8/28	STEVE WILLIAMS	2		0700-1900	WARD FIELD CAMP		
ENG6 SMITH RIVER 9267 DEMOB		8/28	LISA TRIP	2		0700-1900	WARD FIELD CAMP		
ENG6 PVT FIRST STRIKE 118		9/2	JEFF PURITT	3	E-118	0700-1900	WARD FIELD CAMP		
ENG6 PVT GE FORESTRY 204		9/2	ARMANDO TOBAR	3	E-204	0700-1900	WARD FIELD CAMP		
ENG6 PVT KL FARMS E-02		9/2	STEPHEN TRAM	3	E-120	0700-1900	WARD FIELD CAMP		
ENG6 PVT KL FARMS E-13		9/2	IAN SHELLY	3	E-147	0700-1900	WARD FIELD CAMP		
ENG6 PVT PIERCE FIRE 158		8/31	JORDAN HOEFLING	3	E-158	0700-1900	WARD FIELD CAMP		
ENG6 PVT IDAHO TRAILBLAZERS 160		9/2	EDDY GARCIA	3	E-160	0700-1900	WARD FIELD CAMP		
ENG6 PVT IMPERIA FORESTRY 203		9/2	LUCIANO GONZALEZ	3	E-203	0700-1900	WARD FIELD CAMP		
<b>6. Work Assignments:</b>									
Construct direct and indirect lines wherever feasible to maximize suppression efforts. Conduct damage assessment in areas that the fire has impacted.									
<p>Exc 2 Ck WP 114 9/3 STEVE ADAMS 2 E-298</p> <p>HE21A Blue Cab 2 9/5 GUSTAVO SANTUJO 21 C-33</p> <p>STDA STEN BARKER 1 0-251</p>									
<b>7. Special Instructions:</b>									
<p>STEMLT) NICK EVANS 1 0-253</p> <p>-Be aware of retardant avoidance areas, mine shafts and naturally occurring asbestos.</p> <p>-Maintain awareness of fire conditions affecting road systems in your area that might be a primary escape route and establish secondary egress to safe area. Ensure trigger points are established and re-evaluated throughout the shift.</p> <p>Safety Officers assigned to Branch XX: Patrick Cockrum and Keith Aggson</p>									
<b>8. Communications</b>									
Name	Ch	Function	Rx Freq	Rx Tone	Tx Freq	Tx Tone	Mode	Notes	
NIFC C3	1	COMMAND	170.4250	(T3) 131.8	168.0750	(T3) 131.8	A	CAMP 6	
NIFC T4	8	TACTICAL	166.7250	(T3) 131.8	166.7250	(T3) 131.8	A		
CALCORD	15	TACTICAL	156.0750	(T6) 156.7	156.0750	(T6) 156.7	A	EMS AIR COORDINATION	
A/G TAC	14	A/G TAC	169.4875	0.0	169.4875	0.0	A		
AIRGUARD	16	AIRGUARD	168.6250	0.0	168.6250	(T1) 110.9	A		
<b>9. Prepared by: Name:</b>			Hudley/Roberts/Nahas(t)/Sketo(t)			RESL			
						Signature:			
ICS 204		Date/Time: 8/22/2023 2200			Personnel Count: 43				

## ASSIGNMENT LIST (ICS 204 WF)

CONTROLLED UNCLASSIFIED INFORMATION//BASIC

<b>1. Incident Name:</b>			<b>2. Operational Period:</b>				<b>3. Branch</b>		<b>Division</b>	
<b>SMITH RIVER COMPLEX - SOUTH</b>			Date From: 08/23/23	Date To: 08/24/23			<b>XX</b>		<b>MM</b>	
			Time From: 0700	Time To: 0700			Page 2 of 2		Mike-Mike	
<b>4. Operations Personnel:</b>										
Operations Section Chief: <b>Scott Grasmick / Nick Cleary(t)</b>						Operations: <b>Tom Himmelrich</b>				
Branch Director: <b>Joe Tieso</b>						Branch Safety:				
Division/Group Supervisor: <b>Ron Oatman / Josh Fudge(t)</b>						Air Attack:				
<b>5. Resources Assigned:</b>			<b>**Shaded resources below are 24 hour**</b>							
Resource Identifier	ALS	LWD	Leader	Personnel	Request #	Hours	Reporting Location			
ENG6 PVT TETON 222		9/3	RYAN TURNER	4	E-222	0700-1900	WARD FIELD CAMP			
DO22 STF 52		9/3	MIKE KNOTT	2	E-223	0700-1900	WARD FIELD CAMP			
MBM2 PVT NORTHSTATE 230		9/4	TYLER WAITS	2	E-230	0700-1900	WARD FIELD CAMP			
WTT2 GASQUET WT75		8/28	WALTER FRYE	2		0700-1900	WARD FIELD CAMP			
WTT2 GASQUET WT76		8/28	GUY LATHAM	2		0700-1900	WARD FIELD CAMP			
WTT2 AZ FIRE MEDICAL AUTH 106		8/27	JUSTIN MITTON	2	E-6	0700-1900	WARD FIELD CAMP			
WTT2 PVT 5J WATER 161		9/2	KEELY JACKSON	2	E-161	0700-1900	WARD FIELD CAMP			
FMOD MOEN FALLERS 116		9/1	MICHEAL MOEN	2	O-116	0700-1900	WARD FIELD CAMP			
FMOD CHARLIE FALLERS 117		9/1	JOSIAH CLAYBORN	2	O-117	0700-1900	WARD FIELD CAMP			
FMOD CHARLIE FALLERS 154		9/1	DAN KECK	2	O-154	0700-1900	WARD FIELD CAMP			
FMOD TAYLOR FALLING 155		9/2	CHRIS TAYLOR	1	O-155	0700-1900	WARD FIELD CAMP			
FMOD REDWOOD EMPIRE 157		9/2	JESSE GONZALEZ	2	O-157	0700-1900	WARD FIELD CAMP			
TFLD EMM		9/1	KEVIN EMM	1	O-224	0700-1900	WARD FIELD CAMP			
TFLD MIRANDA		9/2	MATT MIRANDA	1	O-173	0700-1900	WARD FIELD CAMP			
EMPF PETERS	X	9/1	DUSTIN PETERS	1	O-92	0700-1900	WARD FIELD CAMP			
EMPF HARDINA	X	9/1	BRANDON HARDINA	1	O-100	0700-1900	WARD FIELD CAMP			
EMTF BRISENDINE		9/2	CHAD BRISENDINE	1	O-103	0700-1900	WARD FIELD CAMP			
<b>6. Work Assignments:</b>										
Construct direct and indirect lines wherever feasible to maximize suppression efforts. Conduct damage assessment in areas that the fire has impacted.										
<b>7. Special Instructions:</b>										
-Be aware of retardant avoidance areas, mine shafts and naturally occurring asbestos.										
-Maintain awareness of fire conditions affecting road systems in your area that might be a primary escape route and establish secondary egress to safe area. Ensure trigger points are established and re-evaluated throughout the shift.										
Safety Officers assigned to Branch XX: Patrick Cockrum and Keith Aggson										
<b>8. Communications</b>										
Name	Ch	Function	Rx Freq	Rx Tone	Tx Freq	Tx Tone	Mode	Notes		
NIFC C3	1	COMMAND	170.4250	(T3) 131.8	168.0750	(T3) 131.8	A	CAMP 6		
NIFC T4	8	TACTICAL	166.7250	(T3) 131.8	166.7250	(T3) 131.8	A			
CALCORD	15	TACTICAL	156.0750	(T6) 156.7	156.0750	(T6) 156.7	A	EMS AIR COORDINATION		
A/G TAC	14	A/G TAC	169.4875	0.0	169.4875	0.0	A			
AIRGUARD	16	AIRGUARD	168.6250	0.0	168.6250	(T1) 110.9	A			
<b>9. Prepared by: Name:</b> Hudley/Roberts/Nahas(t)/Sketo(t) RESL										
						Signature: 				
ICS 204		Date/Time: 8/22/2023 2200				Personnel Count: 18				





## ASSIGNMENT LIST (ICS 204 WF)

CONTROLLED UNCLASSIFIED INFORMATION//BASIC

<b>1. Incident Name:</b> SMITH RIVER COMPLEX - SOUTH		<b>2. Operational Period:</b> Date From: 08/23/23    Date To: 08/24/23 Time From: 0700    Time To: 0700				<b>3. Branch</b> XX		<b>Division</b> VV	
<b>4. Operations Personnel:</b>						Page 1 of 2		Victor-Victor	
Operations Section Chief: <b>Scott Grasmick / Nick Cleary(t)</b> Branch Director: <b>Joe Tieso</b> Division/Group Supervisor: <b>Michael Willardson</b>					Operations: <b>Tom Himmelrich</b> Branch Safety: Air Attack:				
<b>5. Resources Assigned:</b>		**Shaded resources below are 24 hour**							
Resource Identifier	ALS	LWD	Leader	Personnel	Request #	Hours	Reporting Location		
HC2 PVT PAC OASIS 15		9/3	ALEX HESS	20	C-15	0700-1900	WARD FIELD CAMP		
EST6 OES 6805F		8/28	ROBERT PETERSON	18	E-271	0700-1900	WARD FIELD CAMP		
ENG3 PVT ALPINE WF E-7		9/2	LEIF LARSON	3	E-220	0700-1900	WARD FIELD CAMP		
ENG3 PVT ALPINE WF E-8		9/2	STEVEN VIGIL	1	E-121	0700-1900	WARD FIELD CAMP		
ENG3 PVT SABINO 134		9/3	BRYAN CARDENAS	3	E-134	0700-1900	WARD FIELD CAMP		
ENG4 PVT ID HEATSEEKER 233		9/3	HEATH ORABANEC	3	E-233	0700-1900	WARD FIELD CAMP		
ENG4 PVT ID HEATSEEKER 234		9/3	AUSTIN WELLS	3	E-234	0700-1900	WARD FIELD CAMP		
ENG4 PVT TANGO KILO 122		9/3	DON BEARD	3	E-122	0700-1900	WARD FIELD CAMP		
ENG4 BLM IDTFD E2413		9/3	RAD KULASEVIC	5	E-251	0700-1900	WARD FIELD CAMP		
ENG4 PVT PALLAS 133		9/3	FRED AVILA	3	E-133	0700-1900	WARD FIELD CAMP		
ENG5 PVT RATTLESNAKE 209		9/2	RICHARD OROSCO	3	E-209	0700-1900	WARD FIELD CAMP		
ENG5 PVT DB JET 127		9/3	PHILLIP CRISTIE	3	E-127	0700-1900	WARD FIELD CAMP		
ENG5 PVT LATHAN 137 <i>324v ers</i>		9/4	MURRAY HANNAWEEKA	3	E-137	0700-1900	WARD FIELD CAMP		
ENG6 PVT AMERICAN 114		9/2	BILL MORRIS	3	E-114	0700-1900	WARD FIELD CAMP		
ENG6 PVT PINO ONE 145		9/4	DARREN PINO	3	E-145	0700-1900	WARD FIELD CAMP		
ENG6 PVT AMERICAN 151		9/2	LOUIS LIPHART	3	E-151	0700-1900	WARD FIELD CAMP		
ENG6 PVT PACIFIC NW 237		9/3	RAMON IBARRA	3	E-237	0700-1900	WARD FIELD CAMP		
ENG6 PVT AAA THUNDER 115		9/2	LOGAN CATES	3	E-115	0700-1900	WARD FIELD CAMP		
<b>6. Work Assignments:</b> Construct direct and indirect lines wherever feasible to maximize suppression efforts.									
<b>7. Special Instructions:</b> -Be aware of retardant avoidance areas, mine shafts and naturally occurring asbestos. -Maintain awareness of fire conditions affecting road systems in your area that might be a primary escape route and establish secondary egress to safe area. Ensure trigger points are established and re-evaluated throughout the shift. Safety Officers assigned to Branch XX: Patrick Cockrum and Keith Aggson									
<b>8. Communications</b>									
Name	Ch	Function	Rx Freq	Rx Tone	Tx Freq	Tx Tone	Mode	Notes	
NIFC C3	1	COMMAND	170.4250	(T3) 131.8	168.0750	(T3) 131.8	A	CAMP 6	
NIFC T6	10	TACTICAL	168.2500	(T3) 131.8	168.2500	(T3) 131.8	A		
CALCORD	15	TACTICAL	156.0750	(T6) 156.7	156.0750	(T6) 156.7	A	EMS AIR COORDINATION	
A/G TAC	14	A/G TAC	169.4875	0.0	169.4875	0.0	A		
AIRGUARD	16	AIRGUARD	168.6250	0.0	168.6250	(T1) 110.9	A		
<b>9. Prepared by: Name:</b>			Hudley/Roberts/Nahas(t)/Sketo(t)			RESL			
ICS 204			Date/Time: 8/22/2023 2200			Signature: <i>[Handwritten Signature]</i>		Personnel Count: 63	

NIMS IAP

CONTROLLED UNCLASSIFIED INFORMATION//BASIC









AIR OPERATIONS SUMMARY ICS-220													
Incident Name / Number		Sunrise	Startup	Cutoff	Sunset	Time Prepared		Date Prepared					
SMITH RIVER COMPLEX - SOUTH / CA-SRF-000968		6:31	7:01	1905	20:05	1900		Tuesday, August 22, 2023					
Prepared By		Shutdown		Operational Period - Date		Operational Period - Time		John Croty/Steve Markason					
6:31		7:01		20:05		20:35		0700-2100					
<b>General Remarks, Safety Notes, Hazards, Air Operations Special Equipment, etc.</b> TRACK ALL DIPSITE LOCATIONS / NUMBER OF DIPS / GALLONS TAKEN. TRACK ALL DROP LOCATIONS / NUMBER OF DROPS / GALLONS DROPPED ALL GPS DATA TO BE COLLECTED IN DEGREES, MINUTES, DECIMAL MINUTES, FORMAT. AVOID Aerial Application of Retardant / Foam / Agent within 300' of Waterways, Bodies of Water, etc. If Retardant / Foam / Agent is Dropped Within These Areas Immediately Notify the AOBDD and Provide the Following Information: Lat / Long, Estimated Number of Gallons and a Map Detailing The Area. Watch for Powerlines. Caution when operating in non-TFR areas.													
Helibase Information		Name Gasquet		Name Cave Junction		Request #		TFR Information					
Latitude 41 50.667		Longitude 123 59.455		Latitude 42 06.250		Longitude 123 40.916		Reclangle NM					
(use page 2 if needed)		(use page 2 if needed)		(use page 2 if needed)		(use page 2 if needed)		Altitude: 8,000 MSL					
Name		Position		Name		Phone		Multi Lat					
John Croty		AOBD		John Croty		805-440-6186		Multi Long					
Curt Warner		ASGS		Curt Warner		805-478-1231		3/8052					
George Leite		HEBM		George Leite		360-581-8428		NOTAMS:					
Matt Lynde		HLCO		Matt Lynde		530-941-4600		Frequency					
Rick Thompson		ATGS		Rick Thompson		970-209-6989		126.0750					
Cave Helibase		NORTH AOBDD		Cave Helibase		208-891-6878		<a href="http://nir.faa.gov/tfr2/nir.html">http://nir.faa.gov/tfr2/nir.html</a>					
Steve Markason		NORTH ASGS		Steve Markason		307-690-5185							
Jim Dotson				Jim Dotson		307-413-2024							
Bert Smith				Bert Smith		408-660-7371							
<b>HELICOPTERS ( Use page 2 if Needed )</b>													
FAA #	Type	Make/Model	Helibase	Avail	Start	Remarks	FAA #	Type	Make/Model	Helibase	Avail	Start	Remarks
HT 16FH	1	UH-60	Cave	0800	0830	LL BUCKET	HB 625CK	1	S-61N	Merlin	0800	0830	LL BUCKET
HB 534VG	1	UH-60	Cave	0800	0830	LL BUCKET	HT 917	1	S-61	Merlin	0800	0830	LL TANK
HB 391SH	1	UH-60	Cave	0800	0830	LL BUCKET	H-18BH	3	Bell 407	Cove	0800	0830	HLCO
HB 899RH	1	KMAX	Cave	0800	0830	LL BUCKET	H-942AE	3	AS-350B3E	Crescent	0800	0830	PAX RECON LL PSD
H-527	2	Bell 212	Cave	0800	0830	LL BUCKET							
UAS													
UR31	3	Alta X		TBD	TBD	IR/PSD							
SOUTH	MEDICAL A/C												
	3	MH-65	Humboldt			Coast Guard	NORTH						
H-902	2	UH1	Kneeland			Cal Fire	20695	1	HH-60M	Roseburg			OR National Guard
							H-38HX	3	AS-250B3	Sun River			Shorthaul - 187 nm
<b>FIXED WING ( Use Page 2 if Needed )</b>													
FAA #	Type	Make/Model	Base	Avail	Start	Remarks	FAA #	Type	Make/Model	Base	Avail	Start	Remarks
N-7M2	1	C-501	RDD	0800	0830	ATGS							

## SAFETY MESSAGE

INCIDENT NAME: Smith River Complex  
CA-SRF-000968

Operational Period: 8\23\23 Day\Night

### Life First, Everyone Goes Home Stop, Think, Talk and then Act

#### MAJOR HAZARDS AND RISKS:

**Fatigue:** With multiple days working in this terrain your body is most likely suffering some. Please ensure you are eating and drinking enough through out the day and try to get enough rest.

**Difficult Terrain:** This incident has some of the most challenging topography. Always know where you are and the easiest and quickest way out. Don't wait until you have an problem. Use the LCES process and make sure your plan continues to stay valid through out the day. The terrain your in creates challenges to maintaining your escape routes and quality safety zones.

**Hazardous Trees:** Be alert of snags. Crews are working in very hazardous areas with numerous snags. Stay diligent, use lookouts, and flag hazardous areas. Damaged and weakened trees are a serious hazard that should not be taken lightly. Stay at least 1.5 to 2 lengths of the height of the tree away from any snag or hazard tree. Please ensure others around you are engaged in the prevention of a tree strike, we have already had one.

**Hazardous Roads:** These roads are narrow, steep, and unforgiving. Watch your speed and watch out for each other and wildlife on the roads. Take your time while driving and flag roads for others into and out of the divisions.

**Extreme Fire Behavior:** Stay alert for changes in the smoke conditions, wind direction and intensity. Monitor temperature and RH throughout the day and pass that information on to other divisions. Establish trigger points and use lookouts. Make sure safety zones are within obtainable timeline.

**Aircraft:** If a helicopter is used, maintain good communication with the pilot and be clear of drop area. Always consider risk verses gain and pilot safety before a request for a ship is made. Read the IRPG section in the Blue Pages on directing bucket drops.

**Rolling Rock/Debris:** Utilize good spacing and post lookouts in hazardous areas. Never trust the stability of materials on the upslope and loudly shout out anything coming down the hill. Stay diligent while driving for roll out of rocks and trees.

**Mines:** There are numerous mines throughout this complex, please stay alert for any possible areas for mines. There are many vertical shafts that have claimed lives in this area over the years. If you see one, please GPS and flag the area and notify your Division.

Prepared By:  Rick Bertram  Position/Title: SOFC  
805-471-8076

ICS 208	IAP Page	Date/Time: 8\22\23
---------	----------	--------------------

# ICS 205 - INCIDENT RADIO COMMUNICATIONS PLAN

1. Incident Name: SMITH RIVER COMPLEX - SOUTH		2. Date/Time Prepared Date: 08/22/2023 Time: 1930		3. Operational Period: Date From: 08/23/23 Time From: 0700		Date To: 08/24/23 Time To: 0700			
4. Communications Incident Channels		Assigned To		Rx Freq	Rx Tone	Tx Freq	Tx Tone	Mode	Notes
Ch#	Function	Name							
1	COMMAND	NIFC C3	ALL DIVS	170.4250	(T3) 131.8	168.0750	(T3) 131.8	A	CAMP 6
2	COMMAND	NIFC C34	ALL DIVS	173.9750	(T3) 131.8	164.8625	(T3) 131.8	A	MONKEY RIDGE
3	COMMAND	NIFC C35	ALL DIVS	173.8625	(T3) 131.8	163.8250	(T3) 131.8	A	SHIP MTN LOOKOUT
4	FOREST	SRF 12	EMER BACKUP	172.3750	0.0	164.1750	(T12) 127.3	A	SRF TONE 12, GORDON MTN
5	FOREST	SRF 4	EMER BACKUP	172.3750	0.0	164.1750	(T4) 136.5	A	SRF TONE 4, SHIP MTN
6	TACTICAL	NIFC T1	D	168.0500	(T3) 131.8	168.0500	(T3) 131.8	A	
7	TACTICAL	NIFC T3	A	168.6000	(T3) 131.8	168.6000	(T3) 131.8	A	
8	TACTICAL	NIFC T4	MM	166.7250	(T3) 131.8	166.7250	(T3) 131.8	A	
9	TACTICAL	NIFC T5	PP	166.7750	(T3) 131.8	166.7750	(T3) 131.8	A	
10	TACTICAL	NIFC T6	SS, VV	168.2500	(T3) 131.8	168.2500	(T3) 131.8	A	
11	TACTICAL	VFIRE 22	B	154.2650	(T6) 156.7	154.2650	(T6) 156.7	A	
12	TACTICAL	VFIRE 24	S STRUCTURE/NIGHT	154.2725	(T6) 156.7	154.2725	(T6) 156.7	A	SOUTH STRUCTURE/NIGHT
13	A/G CMD	A/G CMD	ALL DIVS	173.8500	0.0	173.8500	0.0	A	BRANCH AND DIVISION USE
14	A/G TAC	A/G TAC	ALL DIVS	169.4875	0.0	169.4875	0.0	A	AIR TO GROUND TACTICAL
15	TACTICAL	CALCORD	ALL DIVS	156.0750	(T6) 156.7	156.0750	(T6) 156.7	A	EMS AIR COORDINATION
16	AIRGUARD	AIRGUARD	ALL DIVS	168.6250	0.0	168.6250	(T1) 110.9	A	EMERGENCY
17									
18									
19									
20	AIRGUARD	AIRGUARD	ALL DIVS	168.6250	0.0	168.6250	(T1) 110.9	A	EMERGENCY
5. Special Instructions									
CURRENT CLONE: SRC818. COMMAND CHANNELS LINKED. FIND WHICH ONE WORKS BEST IN YOUR OPERATIONAL AREA. SMITH RIVER COMPLEX - SOUTH COMMUNICATIONS PHONE # 760-220-2863									
6. Prepared by (Communications Unit Leader): Name: CHRIS OLIVER COM1(t)				Signature: <i>Chris Oliver</i>		Date/Time: 08/22/23		1930	
ICS 205 - CONTROLLED UNCLASSIFIED INFORMATION//BASIC									

# INCIDENT RADIO COMMUNICATIONS PLAN (ICS 205)

Controlled Unclassified Information//Basic

1. Incident Name:		2. Date/Time Prepared:		3. Operational Period:						
SMITH RIVER COMPLEX NORTH		Date: 08/20/2023 Time: 19:20	Date/Time From: 08/23/2023 07:00	Date/Time To: 08/23/2023 22:00						
4. Basic Radio Channel Use:										
Zone Group	Ch #	Function	Channel Name/Trunked Radio System Talkgroup	Assignment	RX Freq	RX Tone/NAC	TX Freq	TX Tone/NAC	Mode (A, D, or M)	Remarks
	1	TACTICAL	TAC 1	UNASSIGNED	168.0500	192.8	168.0500	192.8	A	UNASSIGNED
	2	TACTICAL	TAC 2	DIV 1	168.2000	192.8	168.2000	192.8	A	
	3	TACTICAL	TAC 3	DIV K	168.6000	192.8	168.6000	192.8	A	
	4	TACTICAL	TAC 4	STRUCTURE	166.7250	192.8	166.7250	192.8	A	UNASSIGNED
	5	TACTICAL	TAC 5	DIV H	166.7750	192.8	166.7750	192.8	A	
	6	TACTICAL	TAC 6	UNASSIGNED	168.2500	192.8	168.2500	192.8	A	
	7	CMD	BOLAN ADM	ALL DIV	170.5000	67.0	162.6125	186.2	A	
	8	CMD	FIDDLER ADM	ALL DIV	170.5000	67.0	162.6125	179.9	A	
	9	TACTICAL	VTAC 11	STRUCTURE	151.1375	156.7	151.1375	156.7	A	STRUCTURE GROUP
	10	TACTICAL	ODF REDNET	IA	151.3400	156.7	151.3400	156.7	A	
	11	TACTICAL	NIFC T1	DIV D	168.0500	131.8	168.0500	131.8	A	
	12	TACTICAL	NIFC T4	DIV MM	166.7250	131.8	166.7250	131.8	A	
	13	AIR TO GROUND	AVG CMD	ALL DIVS	173.8500	000.0	173.8500	000.0	A	BRANCH AND DIVISION USE
	14	AIR TO GROUND	AVG TAC	ALL DIVS	169.4875	000.0	169.4875	000.0	A	AIR TO GROUND TACTICAL
	15	AIR MEDICAL	VMED 29	ALL DIVS	155.3475	156.7	155.3475	156.7	A	EMS AIR COORDINATION
	16	AIR TO GROUND	AIRGUARD	ALL DIVS	168.6250	000.0	168.6250	110.9	A	EMERGENCY AIRCRAFT CONTACT
5. Special Instructions:										
6. Prepared By COM1				Name: Bruce Hanna		Signature: /s/ Bruce Hanna				
ICS 205						Date/Time: 8/20/2023 1752				

**LOGISTICS MESSAGE**

1. Incident Name:

SMITH RIVER COMPLEX - SOUTH

2. Operational Period: Date From: 8/23/2023

Date To: 8/24/2023

Time From: 0700

Time To: 0700



**Kitchen Hours**

Breakfast 0600 - 1000

Dinner 1800 - 2200

**Fuel Tender Hours**

0630-1200, 1400-2100

**Weed Wash Hours**

0630-1200, 1400-2100

Lunches, water, Gatorade and ice are available next to the kitchen at the Gasquet Base Camp.

## INCIDENT LINE SUPPLY ORDER FORM

INCIDENT NAME:		DATE:	TIME:
DIVS:	DATE:	TIME:	ORDER #:

**\*\*ORDERS NEEDED FOR TODAY, NEED TO PLACE BY 10:00. ORDERS NEEDED FOR TOMORROW, NEED TO BE PLACED BY 15:00. ALL CREW ORDERS WILL BE PLACED THROUGH DIVS.\*\***

DELIVERY LOCATION:		MODE OF TRANSPORTATION:	
LAT:	DP:	GROUND SUPPORT	
LONG:		HELIBASE:	
DATE NEEDED:		WEIGHT:	
TIME NEEDED (ASAP IS NOT A TIME):			
Order received in supply:	Time:	Name:	
Order shipped through transportation:	Time:	Name:	
Order received by Helibase:	Time:	Name:	

### ITEMS ORDERED

#	QTY	Item	Pending	Shipped	#	QTY	Item	Pending	Shipped
1		Meals-Breakfasts			28		Lead Line ea		
2		Meals-Lunches			29		Cargo Net ea		
3		Meals-Dinners			30		Fiber Tape ea		
4		Meals-MRE's #of cases 12/case)			31		Backpack Pump, Full / Empty		
5		Water, Cubie ea. (5gals)			32		Sling Blivet, suppression		
6		Gatorade case			33		Folding Tank (1500 gal) ea		
7		Water, Bottles case			34		Pumpkin (1500,3000, 6000) ea		
8		Batteries, AA Box (24 ea. box)			35		Hose 1.5" (100'roll) ea		
9		Batteries: Specify Type: ea.			36		Hose 1" (100' roll) ea		
10		Flagging: Specific Type: roll			37		Hose ¾" (50' roll) ea		
11		Tarps/Plastic ea.ft/roll			38		Reducer, 1.5" x 1" NFES 0010 ea.		
12		Parachute Cord ft/roll			39		Reducer, 1" x ¾" 0733 ea		
13		Garbage Bags Box/ea.			40		Gated Y 1.5" 0231 ea		
14		20 Man First Aid Kit ea.			41		Gated Y 1" 0259 ea		
15		Coffee Kit w/propane ea.			42		Gated Y" ¾" 0904 ea		
16		Fuel, Unleaded gal			43		Shut-off Valve ¾" 0835 ea		
17		Fuel, Diesel gal			44		In-line T 1.5" x 1" 0731 ea		
18		Fuel, Drip Torch (3:1 mix) gal			45		Nozzle, 1.5" 0137 ea		
19		Bar Oil qt/ gal			46		Nozzle, 1" 0138 ea		
20		2-Cycle Oil qt			47		Nozzle, ¾" 0136 ea		
21		Drip Torches, Full / Empty ea			48		Chainsaw Kit ea		
22		Fusee case			49		Mark 3 Pump Kit w/ 10 gal raw gas & 2 qt. 2 cycle oil		
23		Shovel ea			50				
24		Pulaski ea			51				
25		Combi ea			52		Lightweight Pump kit/ 5 gal raw gas & 1 qt 2 cycle oil		
26		Tools (specify type) ea			53		Sprinkler Kit ea		
27		Swivel ea			54				

\*\*\*Communications to make a copy for Food if needed



**FINANCE MESSAGE**

1. Incident Name:  
SMITH RIVER COMPLEX - SOUTH

2. Operational Period: Date From: 8/23/2023 Date To: 8/24/2023  
Time From: 0700 Time To: 0700

**CTR and Shift Tickets:**

-If you have the ability to scan a QR code with your smartphone, scan the QR code at the bottom this page to get a fillable CTR or shift tickets. Using a .pdf format, you can scan and fill, then email to your Supervisor on the incident for signature and submission.

-Another option is to complete a paper CTR / Shift Ticket, get it signed by your supervisor on the fire, and take a picture of it.

**E-mailing CTRs and Shift Tickets**

**Subject line: SOUTH TIME**

**Include your Resource #**

**Email to: [2023.smithrivercomplex.finance@firenet.gov](mailto:2023.smithrivercomplex.finance@firenet.gov)**

-If you are emailing your CTR, SHIFT TICKET, or any type of pay documentation to FINANCE, please put SOUTH in the subject line.

-This email can be used to submit finance check-in documents too, like manifests, copies of resource orders, AD casual hire forms, receipts, etc. Be sure to include your Resource Order number somewhere in the body of the email.

-You're encouraged to submit time every two days if possible to stay current, and...

Contact us from: 0530 to 2200  
Personnel Phone # 669-206-2317  
Equipment Phone # 669-206-2316

**REMEMBER, HARD PAPER COPIES OF DOCUMENTS ARE ALWAYS  
WELCOME TOO!!**



## Smith River Complex Incident: Resource Advisor Message

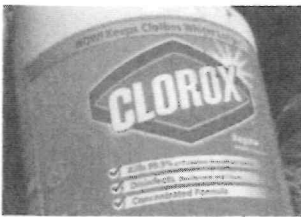
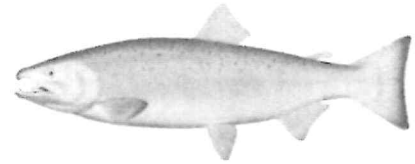
Resource Advisors are Available to all Divisions. The goal is to support the mission of containing this wildfire, while minimizing resource damage. Utilize READ/REAFs for cultural and environmental resource concerns.

### READ Flagging –

- Yellow/white striped - 'Equipment Exclusion'
- Blue and white – Resource Avoidance

### Fish Screens: Coho Salmon Critical Habitat

Most rivers and streams in this area are considered critical habitat for Threatened Coho salmon. Please ensure that Mark 3 and Engine/Tender suction hoses have the appropriate screen attached. Talk to a READ if you think you need a screen!



### Port Orford Cedar root disease

Some local drainages are infected with a root disease that spreads via mud and water. To prevent spreading this disease to uninfected areas, all water tenders and engines will apply bleach to their tanks in a 1 to 1000 ratio (using bleach with 6.0 % Sodium hypochlorite). Talk to a READ if you need some bleach!

### Cultural and Heritage Resources:

The area you are working in is rich in cultural and heritage resources which may be encountered while fighting fire. When potential cultural or heritage resource are encountered, that they are not disturbed.

- GPS its location and take a photo, but do not remove or collect anything. Work with your division to notify a READ for recommendations on how to proceed.
- Some cultural resources present hazardous conditions, such as mining shafts. Be attentive to these potential hazards when working around known mining areas or in rocky areas.
- Known resources may be flagged ahead in work areas.
- Finding of cultural resources should not be reported over the radio.
- Coordinate with READs on all dozer operations to minimize impacts to cultural and heritage sites. Limit dozer operations to pre-existing dozer lines and limit widths to the extent possible.



# **TRAINING SPECIALIST MESSAGE**

**A Training Specialist is on the incident.  
All federal, state, and local government agency  
trainees working on position task books will need  
to register with the Incident Training Specialist in  
order to receive proper credit for your  
assignment.**

**The TNSP desk is in ICP trailer row.  
PLEASE CALL or TEXT if you have any questions.**

*John LeBlanc  
Training Specialist*

john\_leblanc@firenet.gov  
209.471.7229



Sign in training







### MEDICAL PLAN (ICS 206)

<b>1. Incident Name:</b> SMITH RIVER COMPLEX - SOUTH		<b>2. Operational Period:</b> Date From: 8/23/23 Date To: 8/24/23 Time From: 0700 Time To: 0700						
<b>3. INCIDENT MEDICAL AID STATIONS</b>								
MEDICAL AID STATIONS		LOCATION						
Frontline Medical Support		Base Camp - Ward Field, Gasquet						
		R.N. & EMT						
		YES NO						
		X						
<b>4.a. AIR AMBULANCES</b>								
NAME		LOCATION	CONTACT	PARAMEDICS				
				YES NO				
Air Ambulance / Type 3		Medford, OR	South Smith Communications	X				
CHP (Daytime only Hoist) / Type 3		Redding, CA	South Smith Communications	X				
Coast Guard (Day/Night Hoist) / Type 3		Humbolt Bay, CA	South Smith Communications	X				
Air Ambulance / Type 3		Redding, CA	South Smith Communications	X				
Cal Fire (Hoist)		Kneeland, CA	South Smith Communications	X				
<b>4.b. GROUND AMBULANCES &amp; REMS</b>								
NAME		LOCATION		PARAMEDICS				
				YES NO				
Ambulance 1 (Mountain Medics)		Gasquet Ranger District Office (Hwy 199)		X				
Ambulance 2 (Mountain Medics)		DP 90		X				
Ambulance 3 (Emergency Response)		County Rd. 305 (Corral Fire)		X				
Ambulance 4 (LMR F.D.)		Gasquet Base Camp		X				
REMS 1 (North County F.D.)		Gasquet Ranger District Office (Hwy 199)		X				
<b>5. HOSPITALS GPS DATUM - WGS 84</b>								
NAME	ADDRESS	TRAVEL TIME		PHONE LAT, LONG	HELIPAD		BURN CENTER	
		AIR	GRND		YES	NO	YES	NO
Sutter Coast Hospital (Level 4 Trauma Center)	800 E. Washington Blvd. Crescent City CA.		25 min.	707-464-8888 Lat: 41 46.454 Long: 124 11.537		X		X
Rogue Regional Medical (Level 2 Trauma Center)	2825 E Barnett Rd. Medford, OR	35 min.	4.5 hrs	541-789-7178 Lat: 42 19.10 Long: 122 49.50	X OR99			X
Mercy Medical Center (Level 2 Trauma Center)	2175 Rosaline Ave. Redding, CA	55 min.	4.5 hrs.	530-225-6000 Lat: 40 34.14 Long: 122 23.97	X 7CA3			X
UC Davis Medical Center (Level 1 Trauma & Burn)	2315 Stockton Blvd. Sacramento, CA	1.5 hr.	7 hrs.	916-734-3636 Lat: 38 33.20 Long: 121 27.28	X 3CLO		X	
<b>6. MEDICAL EMERGENCY PROCEDURES</b>								
<p style="text-align: center;"><b>LINE "MEDICAL EMERGENCY" PLAN:</b></p> <p><b>Crew Supervisor</b> to contact Division Supervisor/Operations with:</p> <ul style="list-style-type: none"> <li>• Patient Complaint, Condition and Location via Tactical or Command Frequency. <b>Priority 1/Red &amp; 2/Yellow</b> patients</li> <li>• <u>Triggers</u> Incident within Incident (IWI)</li> </ul> <p><b>Division Supervisor/*POC</b> contacts South Smith Communications:</p> <ul style="list-style-type: none"> <li>• Division Supervisor or *POC will run "<b>Medical-Emergency</b>" on Command Frequency.</li> <li>• <b>Division Supervisor</b> or *POC to use "<b>Medical Plan (ICS 206 WF)</b>" worksheet in the IAP or IRPG.</li> <li>• Communications contacts Medical Unit Leader on the Command Frequency or cell phone (805-570-9061)</li> </ul> <p><b>*POC (Point of Contact)</b></p>					<p style="text-align: center;"><b>LINE "NON-EMERGENCY INCIDENT" PLAN:</b></p> <p><b>Crew Supervisor</b> to contact Division Supervisor with:</p> <ul style="list-style-type: none"> <li>• Patient Complaint, Condition and Location via Tactical or Command Frequency. <b>Priority 3/Green</b> Patients</li> <li>• <u>Does not</u> trigger Incident within Incident (IWI).</li> </ul> <p><b>Division Supervisor/POC</b> Contacts South Smith Communications</p> <ul style="list-style-type: none"> <li>• Division Supervisor or *POC will run "<b>Non-Emergency Incident</b>" on the Command Frequency.</li> <li>• Division Supervisor or *POC to use "<b>Medical Incident Report</b>" worksheet on back of this page or in IRPG.</li> <li>• Communications contacts Medical Unit Leader on the Command Frequency or Cell Phone (805) 570-9061</li> </ul> <p><b>IN-CAMP – 24 HOUR MEDICAL</b> Contact South Smith Communications with: Patient Complaint, Condition, and Location via phone (760) 220-2863 or Command Frequency</p>			
ICS 206	<b>7. PREPARED BY: (Medical Unit Leader)</b> J. Emerson/M. Lencioni/M. Caffey(t) <i>Jim Emerson</i>			<b>8. REVIEWED BY: (Safety Officer)</b> Rick Bertram <i>Rick Bertram</i>				

## MEDICAL PLAN (ICS 206 WF)

Controlled Unclassified Information//Basic

Medical Incident Report					
FOR A NON-EMERGENCY INCIDENT, WORK THROUGH CHAIN OF COMMAND TO REPORT AND TRANSPORT INJURED PERSONNEL AS NECESSARY. FOR A MEDICAL EMERGENCY: IDENTIFY ON-SCENE INCIDENT COMMANDER BY NAME AND POSITION AND ANNOUNCE "MEDICAL EMERGENCY" TO INITIATE RESPONSE FROM IMT COMMUNICATIONS/DISPATCH.					
Use the following items to communicate situation to communications/dispatch.					
<b>1. CONTACT COMMUNICATIONS / DISPATCH</b> (Verify correct frequency prior to starting report) <i>Ex: "Communications, Div. Alpha. Stand-by for Emergency Traffic."</i>					
<b>2. INCIDENT STATUS:</b> Provide incident summary (including number of patients) and command structure. <i>Ex: "Communications, I have a Red priority patient, unconscious, struck by a falling tree. Requesting air ambulance to Forest Road 1 at (Lat/Long.) This will be the Trout Meadow Medical, IC is TFLD Jones. EMT Smith is providing medical care."</i>					
Severity of Emergency / Transport Priority	<input type="checkbox"/> <b>RED / PRIORITY 1</b> Life or limb threatening injury or illness. Evacuation need is IMMEDIATE <i>Ex: Unconscious, difficulty breathing, bleeding severely, 2<sup>o</sup> - 3<sup>o</sup> burns more than 4 palm sizes, heat stroke, disoriented.</i> <input type="checkbox"/> <b>YELLOW / PRIORITY 2</b> Serious Injury or illness. Evacuation may be DELAYED if necessary. <i>Ex: Significant trauma, unable to walk, 2<sup>o</sup> - 3<sup>o</sup> burns not more than 1-3 palm sizes.</i> <input type="checkbox"/> <b>GREEN / PRIORITY 3</b> Minor Injury or illness. Non-Emergency transport <i>Ex: Sprains, strains, minor heat-related illness.</i>				
Nature of Injury or Illness & Mechanism of Injury			Brief Summary of Injury or Illness <i>(Ex: Unconscious, Struck by Falling Tree)</i>		
Evacuation Request	Air Ambulance / Short Haul/Hoist Ground Ambulance / Other				
Patient Location	Descriptive Location & Lat. / Long. (WGS84)				
Incident Name	Geographic Name + Medical <i>(Ex: Trout Meadow Medical)</i>				
On-Scene Incident Commander	Name of on-scene IC of Incident within an Incident <i>(Ex: TFLD Jones)</i>				
Patient Care	Name of Care Provider <i>(Ex: EMT Smith)</i>				
<b>3. INITIAL PATIENT ASSESSMENT:</b> Complete this section for each patient as applicable (start with the most severe patient)					
Patient Assessment: See IRPG PAGE 106					
Treatment:					
<b>4. EVACUATION PLAN:</b> Evacuation Location ( <i>if different</i> ): (Descriptive Location (drop point, intersection, etc.) or Lat. / Long.) Patient's ETA to Evacuation Location:					
Helispot / Extraction Site Size and Hazards:					
<b>5. ADDITIONAL RESOURCES / EQUIPMENT NEEDS:</b> <i>Example: Paramedic/EMT, crews, immobilization devices, AED, oxygen, trauma bag, IV/fluid(s), splints, rope rescue, wheeled litter, HAZMAT, extrication</i>					
<b>6. COMMUNICATIONS: Identify State Air/Ground EMS Frequencies and Hospital Contacts as applicable</b>					
Function	Channel Name/Number	Receive (RX)	Tone/NAC *	Transmit (TX)	Tone/NAC *
COMMAND					
AIR-TO-GRND					
TACTICAL					
<b>7. CONTINGENCY: Considerations:</b> If primary options fail, what actions can be implemented in conjunction with primary evacuation method? Be thinking ahead..					
<b>8. ADDITIONAL INFORMATION:</b> Updates/Changes, etc.					
<b>REMEMBER:</b> Confirm ETAs of resources ordered. Act according to your level of training. Be Alert. Keep Calm. Think Clearly. Act Decisively.					