



## FINANCE MESSAGE

**Finance Email:** [2023.smithrivercomplex.finance@firenet.gov](mailto:2023.smithrivercomplex.finance@firenet.gov)

**Finance Phones:** *Contractors: 971-245-0259 Agency Personnel: 971-762-8750*

**This incident requires electronic documentation.** Please email your time to the Finance email address daily *with the word "NORTH" as the first word in the subject line.* Finance documents required upon check in are:

### Required Documents

Overhead, Agency Crews & Cooperators	Contract Resources
<b>Check-in docs needed:</b> Resource Order, Manifest, Cooperative Agreement, Casual Hire Form w/ECI# (as applicable)	<b>Check-in docs needed:</b> Resource Order, Manifest, Full Contract/Agreement, Certifications ( <i>If required</i> ) Pre-Inspection
<b>Daily:</b> CTRs, Shift Tickets	<b>Daily:</b> CTRs, Shift Tickets, receipts (claims, etc.)
<b>Demob:</b> Signed OF-288; Signed OF-286	<b>Demob:</b> Contractor Evaluations, Shift Tickets, receipt(s) for Addition/Deductions, Post-Inspection, Signed OF-286

Additional Incident Information (to be added to your Shift Ticket or CTR)

Incident Name: Smith River Complex North

Incident Number: CA-SRF-000968

Financial codes:

DOI – QJ6L

Washington DNR 221-ICM

USDA – P5QJ6L (0510)

**THANK YOU!!**

## DEMOB

**Fliers complete the "Air Travel Request" QR code below, 72 hours prior to flight date.**

- Return supplies to the Cache
- Return radios, antennas, etc., to Communications
- Contact Finance about closing out your paperwork
- If you are a Trainee contact the Training Specialist, stop by or call 360-701-3154

**Once the above items have been completed, SCAN the DMOB QR code and complete the questions.**



Air Travel



DEMOB

**Call Demob at 971-713-0265 to confirm the information has been received.**

## CHECK-IN

Please complete the virtual check-in process via the link below. If you have any questions, please email check-in at [2023.smithrivercomplex.checkin@firenet.gov](mailto:2023.smithrivercomplex.checkin@firenet.gov). Please put NORTH in the subject line when emailing check-in.


You are not checked in until you provide the following:

- Red Cards
- Roster/Manifest



### **Process for crew/operator personnel swaps:**

Contact Check-In at 208-891-6877 or stop by Lake Selmac ICP and provide the necessary information on personnel changes 48 hours prior to swapping crew members/operators.

<b>INCIDENT OBJECTIVES</b>	<b>1. Incident Name</b> Smith River Complex North	<b>2. Date</b> August 22, 2023	<b>3. Time</b> 2000		
<b>4. Operational Period: 08/23-24/2023 0600-0600</b>					
<b>5. General Objectives:</b>					
Implement a FULL suppression strategy for the Smith River Complex:					
<ul style="list-style-type: none"> <li>• Provide for firefighter and public safety through hazard recognition and application of the risk management process.</li> <li>• Coordinate public information to provide timely and continuous updates to affected agency partners, cooperators, and the public.</li> <li>• Coordinate suppression activities with READs to minimize impacts on natural and cultural resources.</li> <li>• Effectively manage and track costs for all incidents identified within the Smith River Complex.</li> <li>• Close coordination with Regions 5 and 6 fire leadership to ensure effective and efficient management of firefighting resources.</li> <li>• Smith River Complex has two IMTS managing the incident with CA-15 to the south and PNW-13 to the north.</li> <li>• Effectively manage and track costs for all incidents identified within the Smith River Complex.</li> </ul>					
Smith River Complex North (PNW-13):					
<ul style="list-style-type: none"> <li>• Protect and minimize the impact to the communities of Elk creek, Illinois valley, Dwight creek, Takelma, and Sun star.</li> <li>• Evaluate control features, develop structure protection group.</li> <li>• Work with Josephine and Curry Counties in Oregon, as well as Del Norte County in California for evacuation levels and future recommendations.</li> <li>• Develop a PACE model, in coordination with CA-15.</li> </ul>					
Smith River Complex South (CA-15):					
<ul style="list-style-type: none"> <li>• Minimize impact to the communities and outlying areas near Gasquet, Pioneer, Lower Jones Creek, Washington Flat, Siskiyou Fork, French Hill, Coon Creek, Rock Creek, and Crescent City, as well as water resources, transportation routes, electrical infrastructure, and natural and cultural resources.</li> <li>• East of the Six Rivers National Forest boundary</li> <li>• West of the Six Rivers and Klamath National Forest boundary</li> <li>• North of the 15N01 forest road</li> <li>• South of the Rouge Siskiyou National Forest Boundary</li> </ul>					
<b>5a. Incident Requirements</b>					
<ul style="list-style-type: none"> <li>• Provide Agency Administrator updates and briefings on incident status as conditions evolve.</li> <li>• The Smith River Complex is being managed with a full suppression strategy.</li> <li>• Personnel on the incident will implement a risk-based decision-making process, with shared AA alignment.</li> <li>• Firefighting operations will implement tactics that offer the highest probability of success to achieve the strategy of suppressing the fire, preventing unnecessary exposure to ground personal, suppression related damage, and protecting values at risk.</li> <li>• Values include the safety of the public, and firefighters; including private and tribally held timberlands.</li> </ul>					
<b>5b. Leaders Intent</b>					
<ul style="list-style-type: none"> <li>• <b>Safety:</b> Firefighter, public, and aviation safety will be addressed through hazard/exposure risk mitigation processes.</li> <li>• <b>Risk Management:</b> Utilize an aligned risk assessment process which mitigates exposure to firefighters through evaluation of conditions during the duration of the incident.</li> <li>• <b>Communication:</b> Keep Agency Administrators and firefighters informed of strategic actions, accomplishments, and challenges.</li> <li>• <b>Operations:</b> Make informed strategic/tactical decisions suppressing the fire in the right geographic locations with the appropriate resources having the highest probability of success.</li> <li>• <b>Stakeholders:</b> Collaborate with local partners, officials, and landowners to provide situational updates pertinent to the fire.</li> <li>• <b>Logistics:</b> Provide support ensuring food, water, and shelter for incident responders.</li> <li>• <b>Human Resources:</b> Ensure that all incident personnel are treated with dignity and respect, while having zero tolerance for harassment, alcohol, or illegal drug use.</li> <li>• <b>Public Information:</b> Provide timely and accurate information through media outlets, trap lines, briefings, community meetings, and social platforms.</li> <li>• <b>Finance:</b> Monitor and communicate incident cost associated with meeting incident objectives.</li> <li>• <b>Planning:</b> Provide incident documentation, resource tracking, and accurate data management.</li> </ul>					
<b>6. Weather Forecast &amp; General Safety Message for Period – See Attached</b>					
<b>7. Attachments (mark if attached)</b>					
<input checked="" type="checkbox"/>	Organization List - ICS 203	<input checked="" type="checkbox"/>	Weather Forecast	<input checked="" type="checkbox"/>	Safety Message
<input checked="" type="checkbox"/>	Div. Assignment Lists - ICS204	<input checked="" type="checkbox"/>	Fire Behavior Forecast	<input type="checkbox"/>	Medical Emergency Com Plan
<input checked="" type="checkbox"/>	Communications Plan - ICS 205	<input checked="" type="checkbox"/>	Incident Map	<input type="checkbox"/>	
<input checked="" type="checkbox"/>	Medical Plan - ICS 206	<input checked="" type="checkbox"/>	Air Operations - ICS 220	<input type="checkbox"/>	
<b>9. Prepared by</b> Aileen Nichols			<b>9. Approved by (Incident Commander)</b> Eric Riener 		

<b>ORGANIZATION ASSIGNMENT LIST</b>	
1. Incident Name <b>Smith River Complex North</b>	
2. Date <b>August 23, 2023</b>	3. Time <b>1830</b>
4. Operational Period <b>August 24-25, 2023 0600-0600</b>	
<b>Position</b>	<b>Name</b>
<b>NWIMT 13 LWD 9/02/2023</b>	
<b>5. Incident Commander and Staff</b>	
Incident Commander	<b>Eric Riener</b>
Liaison Officer/Deputy IC	<b>Larry Nickey</b>
Safety Officer	<b>Ray Hershey</b>
Information Officer	<b>Randall Rishe</b>
Information Officer Deputy	<b>Eric Waters</b>
Human Resource Specialist	<b>Margaret Dietrich</b>
<b>6. Agency/Organization Representative(s):</b>	
USFS RSF Agency Administrator	<b>Al Watson</b>
USFS RSF River Agency Representative	<b>Scott Blower</b>
USFS RSF Fire Management Liaison	<b>Mike McCann</b>
BLM Agency Administrator	<b>Steven Lydick</b>
BLM Agency Representative	<b>Chris Foster</b>
BLM Agency Representative - t	<b>Heidi Lowery</b>
Oregon Department of Forestry	<b>Ryan Gorden</b>
Lead READ	<b>Stacy Johnson</b>
<b>7. Planning Section</b>	
Plans Chief	<b>Aileen Nichols</b>
Resources Unit	<b>Meredith Butcher</b>
Resources Unit - t	<b>Carolyn Zanofto</b>
Status Check-In	<b>Sandy Hoffman</b>
Status Check-In/Documentation Unit - t	<b>Robert Wandel</b>
Demob Unit	<b>Laura Backlund</b>
Situation Unit - t	<b>Laurie Bergvall</b>
Fire Behavior Analyst	<b>Dean Warner</b>
Incident Meteorologist	<b>Jonathan Chriest</b>
GIS Specialist	<b>Kayla Fermin</b>
GIS Specialist - t	<b>David Hines</b>
Computer Specialist	<b>Dave Johnson</b>
Computer Specialist	<b>Jeff Hixon</b>
Computer Specialist - t	<b>Zak Thomas</b>
Strategic Operational Planner - t	<b>Scott Brewer</b>
<b>8. Logistics Section</b>	
Logistics Chief	<b>Bryan Swanberg</b>
Logistics Chief - t	<b>Cindy Preston</b>
Deputy Logistics Chief	<b>Jim Hammer</b>
Deputy Logistics Chief	<b>Peter Fitzmaurice</b>
Supply Unit Leader - t	<b>Jon Byerly</b>
Ordering Manager	<b>Rob Jeter</b>
Ordering Manager - t	<b>Robert Yarnall</b>
Communications Unit Ldr - t	<b>Bruce Hanna</b>
Incident Comm Mgr	<b>Alandra Swords</b>
Com Tech	<b>Kevin Alexander</b>
Food Unit Leader	<b>Pat Young</b>
Facilities Unit Leader	<b>Keith Yonaka</b>
Facilities Unit Leader	<b>Shannon Anderson</b>
Medical Unit Leader	<b>Ben Meacham</b>
Medical Unit Leader	<b>James Brown</b>

Ground Support Unit		<b>Dave Hesburn</b>
Ground Support Unit		<b>Billie Hunter</b>
Receiving/Distribution Mgr - t		<b>Aaron Ritter</b>
Base Camp Manager - t		<b>Justin Schmal</b>
<b>9. Operations Section</b>		
Operations (Field)		<b>John Spencer</b> <b>Jesse Stone - t</b>
Operations (Planning/ Strategic) Operations (Planning)		<b>Shawn Jaca</b> <b>Tim Crawley-Murphey - t</b>
Operations (Night)		<b>Larry Pingle</b>
<b>a. North</b>		
Branch Director		
Division Supervisor	<b>H</b>	<b>Anna Graves</b> <b>Jothan McGaughey - t</b>
Division Supervisor	<b>I</b>	<b>Whitney Machado</b> <b>Silas Baffa - t</b>
Division Supervisor	<b>K</b>	<b>Derrick Youngerman</b>
Group Supervisor	<b>Structure West</b>	<b>Robert Boles</b> <b>Shannon Clark - t</b>
Group Supervisor	<b>Structure East</b>	<b>Miranda Stuart</b> <b>Billy Turner - t</b>
Group Supervisor	<b>Contingency West</b>	<b>Derreck Johnson</b>
Group Supervisor	<b>Contingency East</b>	<b>Randy Anderson</b> <b>Mark Johnson - t</b>
Manager	<b>Staging</b>	<b>Rick Long</b>
<b>b.</b>		
Branch Director		
Division Supervisor		
Division Supervisor		
<b>c. Air Operations Branch</b>		
Air Operations		<b>Steve Markason</b>
Air Support Group		<b>Jim Dotson</b>
Air Support Group - t		<b>Bert Smith - t</b>
<b>10. Finance Section</b>		
Finance Chief		<b>Veronika Klukas</b>
Finance Chief - t		<b>Lori Price</b>
Cost Unit		<b>Paula James</b>
Time Unit		<b>Angie Chapman</b>
Time Unit - t		<b>Heather Fitzpatrick</b>
Proc Unit Leader		<b>Laurette Gaylord</b>
Proc Unit Leader - t		<b>Eric Soto</b>
COMPS/CLAIMS		<b>Hanna Jeter</b>
Incident Cont. Project Insp		<b>Stan Zazado</b>
PTRC/In-Box Manager - t		<b>Ryker Aldred</b>
<b>PREPARED BY: Meredith Butcher</b>		



# Fire Weather Forecast



**FORECAST NO: 2**  
**PREDICTION FOR: Thursday-Friday**  
**DATE: August 24, 2023**  
**FORECAST ISSUED: 1800 August 23, 2023**

**FIRE: Smith River Complex North**  
**UNIT: CA-SRF-968**  
**IMET: Jonathan Chriest (425-765-3749)**  
**SIGNED: Jonathan Chriest**

**WEATHER DISCUSSION: Valley elevations = 1400 ft (Illinois Valley), Ridgetop elevations = 3300 ft (Monkey Ridge)**

An upper level disturbance will bring widely scattered, mainly dry fast moving thunderstorms beginning around 1500 today. Should thunderstorms form, they are likely to form quickly right over the immediate area, and may bring erratic outflow winds as strong as 40 mph. High pressure remains in place at the surface and today will be the peak of hot conditions before a low aloft shifts south off the coast, bringing a moderated weather pattern.

**TODAY: \*\*RED FLAG WARNING FOR LIGHTNING AND DRY FUELS IN EFFECT FROM 1500 UNTIL 0800 FRI\*\***

**WEATHER:** Clear, becoming partly cloudy in the afternoon. Widely scattered, mostly dry fast moving thunderstorms after 1500. Storms will move from SE -> NW. Any thunder would accompany dangerous lightning and erratic outflow winds to 40 mph. Periods of heavy smoke in the afternoon.

<b>MAX TEMP:</b>	<b>Valleys:</b> 90-95°F (6-9°F ↑)	<b>MIN RH:</b>	<b>Valleys:</b> 29-36% (Little change)
	<b>Ridgetops:</b> 83-87°F (6-10°F ↑)		<b>Ridgetops:</b> 33-38% (Little change)
<b>CHC WTG RAIN:</b> 5%	<b>LAL:</b> 3	<b>SFC VIS:</b> 3-4 miles -> 1-2 miles or less in the afternoon	

**WINDS:** **Valleys:** Morning: downslope 3-6 mph, afternoon: west 3-7 mph.  
**(20 feet)** **Ridgetops:** East 8-12 mph, turning west 7-12 mph with gusts to 20 mph around 1200.

**MIXING HEIGHT:** Rising to 9,000 ft by 1300. **TRANSPORT WIND:** Southwest 10-14 mph.

**TONIGHT: \*\*RED FLAG WARNING FOR LIGHTNING AND DRY FUELS IN EFFECT UNTIL 0800 FRI\*\***

**WEATHER:** Partly cloudy, becoming mostly clear. Widely scattered, mostly dry fast moving thunderstorms, becoming isolated after 0100. Any thunder would accompany dangerous lightning and erratic outflow winds to 40 mph. Periods of heavy smoke.

<b>MIN TEMP:</b>	<b>Valleys:</b> 49-54° (1-2°F ↑)	<b>MAX RH:</b>	<b>Valleys:</b> 65-75% (12-18% ↑)
	<b>Ridgetops:</b> 56-60° (1-2°F ↑)		<b>Ridgetops:</b> 55-60% (6-8% ↑)
<b>CHC WTG RAIN:</b> 5%	<b>LAL:</b> 3 -> 2	<b>SFC VIS:</b> 1-2 miles	

**WINDS:** **Valleys:** Downslope 2-4 mph.  
**(20 FEET)** **Ridgetops:** Light and variable, becoming west 2-5 mph around 0300.

**MIXING HEIGHT:** Dropping to 2,000 ft by 2200. **TRANSPORT WIND:** South 6-8 mph.

**FRIDAY:**

**WEATHER:** Mostly clear. Periods of heavy smoke.

<b>MAX TEMP:</b>	<b>Valleys:</b> 85-90°F (4-6°F ↓)	<b>MIN RH:</b>	<b>Valleys:</b> 36-43% (7-10% ↑)
	<b>Ridgetops:</b> 77-81°F (4-6°F ↓)		<b>Ridgetops:</b> 41-47% (7-10% ↑)
<b>CHC WTG RAIN:</b> 0%	<b>LAL:</b> 1	<b>SFC VIS:</b> 1-2 miles	

**WINDS:** **Valleys:** Morning: downslope 2-4 mph, afternoon: west 3-7 mph.  
**(20 feet)** **Ridgetops:** Morning: southeast 3-5 mph, afternoon: west 5-9 mph gusts to 15 mph.

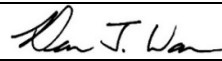
**MIXING HEIGHT:** Rising to 8,000 ft by 1300. **TRANSPORT WIND:** Southwest 7-10 mph.

**EXTENDED OUTLOOK:** A low aloft off the coast will shift south and stall, bringing a more persistent weather pattern into early next week. A diurnal wind pattern will develop with gusty W winds expected each afternoon. Temperatures will stay mostly in the 80s, with a slight cooling trend. Moderate to good RH recovery is expected each night. Beyond today, no precipitation or thunderstorm activity is expected through early next week.

Please send weather observations to Jonathan Chriest (IMET) at [jonathan.chriest@noaa.gov](mailto:jonathan.chriest@noaa.gov) or 425-765-3749



### Fire Behavior Forecast #4

<b>Incident:</b> Smith River Cx North CA-SRF-000968	<b>TYPE OF FIRE:</b> Wildfire
<b>DATE/TIME ISSUED:</b> 8/23/23 1900	<b>OPERATIONAL PERIOD:</b> 8/24-25/23 All Shifts
<b>FBAN:</b> Dean Warner	<b>Signed:</b> 

**Weather Summary** - See Incident Weather Forecast:

\*\*\*\*\* RED FLAG WARNING – Abundant lightning over dry fuels – Late afternoon to early morning.\*\*\*\*\*

#### Fuels

**Shrub:** Shrubs and brush are 1 to 3 feet high with a low to moderate load of grass intermixed with sparse stems of conifer. Manzanita brush and other live fuels are drought stressed from below normal amounts of spring precipitation. These live fuels are cured enough to contribute to fire spread. Given the exposed nature of this fuel type, eye level winds in excess of 6 mph can cause rates of spread to exceed 8 chains per hour. Without wind these fuels will typically exhibit low rates of spread.

**Timber litter and shrub:** Primary carrier of the fire is understory brush with timber and leaf litter. Expect slow rates of spread under moderate weather conditions. Canopy closure shelters fuels from wind but fire spread will be slow and continuous. Eye level winds in excess of 6 mph will allow fire to reach the canopy, resulting in torching and possible crowning. The drought stressed vegetation and areas of abundant dead fuel loading will exasperate fuel spread.

**OUTPUTS:**      Expected Fine Dead Fuel Moisture: 6%      POI: 60%

Fire Behavior: Active Atmosphere: Unstable Max. spot distance: ¼ mile LAL: 3 ERC: 63=93 percentile Camp Lookout RAWS	<b>Fuel/Type Model</b>	<b>Maximum Rate of Spread</b>	<b>Maximum Flame Length</b>
	Shrub	6 ch/hr	2 ft.
	Timber litter shrub	4 ch/hr	1 ft.

Expected Fire Behavior is Based on the Warmest, Driest, Windiest Conditions Forecasted.

**General/Potential:** Poor overnight recovery will set the stage for an active fire today, while temperature, RH, and afternoon wind direction will not favor our operational effort. East to west flowing drainages will provide the best alignment for afternoon west winds. Additionally, lightning is predicted for our area which could produce new starts and strong outflow winds. Conversely, topographically sheltered areas will not realize the full potential of the wind.

**Hotel:** The drainages in this division will best align with the afternoon winds. Very little topographic sheltering will protect the fuels. Expect a strong fire advance to the 4402 road and 112 road from the Diamond Creek and Monkey Creek drainages.

**India:** Fire will continue backing off of Monkey Creek Ridge towards the Hwy 199 corridor. Fire is also expected to advance down into the West Fork of the Illinois River; however, the fire is sheltered from the west wind and likely to burn into sparse fuels which will further decrease rate of spread.

**Kilo:** Fire will continue to progress north and east on the east side of Hwy 199, watch for fire to establish in the Siskiyou and Middle Forks of the Smith River, the riparian influenced areas offer abundant fuels for fire to progress up drainage to the east.

#### Air Operations

Morning inversion may break early but smoke will affect aviation operations throughout the day.

#### Safety

Standard Order Number 2 is emphasized today: **Know what your fire is doing at all times.** There are many weather elements in play today. Each could have a different or compounding effect on fire movement. Implementing strategies and tactics for successful outcomes requires knowledge. Most importantly, maintain knowledge of what the fire is doing at all times.

<b>DIVISION ASSIGNMENT LIST</b>				1. Branch		2. Division <b>H</b>	
3. Incident Name <b>Smith River Complex North</b>				4. Operational Period Date: <b>08/24/2023</b> Time: <b>0600-2200</b>			
5. Operations Personnel							
Operations Chief		<b>John Spencer Jesse Stone - t</b>		Division Supervisor		<b>Anna Graves Jothan McGaughey - t</b>	
Safety Officer		<b>Ray Hershey</b>		Air Attack			
6. Resources Assigned this Period							
Strike Team/Task Force/Resource Designator		Leader	# Persons	LWD	Drop Off PT./Time		Pick Up PT./Time
<b>1</b>	<b>**E-50061 ENG6 3Bs</b>	<b>Jonathan Toebben</b>	<b>3</b>	<b>8/31</b>	<b>Lake Selmac ICP</b>		<b>Lake Selmac ICP</b>
<b>2</b>	<b>**E-50062 ENG6 Lone Pine</b>	<b>Katy Adams</b>	<b>3</b>	<b>8/31</b>	<b>Lake Selmac ICP</b>		<b>Lake Selmac ICP</b>
<b>3</b>							
<b>4</b>	<b>E-50040 CHP2 Prometheus</b>	<b>Steven Carrick</b>	<b>3</b>	<b>9/5</b>	<b>Lake Selmac ICP</b>		<b>Lake Selmac ICP</b>
<b>5</b>							
<b>6</b>							
<b>7</b>							
<b>8</b>							
<b>9</b>							
<b>10</b>							
<b>11</b>							
<b>12</b>							
<b>13</b>							
<b>14</b>							
<b>15</b>							
<b>16</b>	<b>Pacific Power Task Force</b>	<b>Anna Arritola</b>	<b>5</b>		<b>No meals</b>		
<b>17</b>							
<b>18</b>							
<b>19</b>	<b>O-68 Medic 2</b>	<b>Erica Jackson</b>	<b>1</b>		<b>Lake Selmac ICP</b>		<b>Lake Selmac ICP</b>
<b>20</b>	<b>O-50032 EMT1</b>	<b>Lisa Johnson</b>	<b>1</b>		<b>Lake Selmac ICP</b>		<b>Lake Selmac ICP</b>
<b>21</b>	<b>O-50123 REMS 2</b>	<b>Brady Graham</b>	<b>4</b>		<b>Lake Selmac ICP</b>		<b>Lake Selmac ICP</b>
<b>22</b>							
		<b>Meal count</b>	<b>15</b>				
7. Control Operations: <b>Task:</b> Scout the 019 road. Start prepping 019 road and old dozer line from the Biscuit fire. Finish prepping power poles. Finish prepping on 4402 road. <b>Purpose:</b> Minimize impacts to communities and infrastructure to the north. <b>End state:</b> Impacts have been minimized to communities and infrastructure to the north.							
8. Special Instructions: **Indicates IA Resources. REAFs Bucher, Mero, Saunders and Reha will contact DIVS upon entering and exiting their respective divisions.							
9. Division/Group Communication Summary							
<b>See Communications Plan</b>							
Prepared by (Resource Unit Ldr) <i>Meredith Butcher/Carolyn Zanotto</i>			Approved by (Planning Sect. Ch.) <i>Aileen Nichols</i>			Date <b>08/23/2023</b>	Time <b>2000</b>

DIVISION ASSIGNMENT LIST				1. Branch		2. Division I	
3. Incident Name <b>Smith River Complex North</b>				4. Operational Period Date: <b>08/24/2023</b> Time: <b>0600-2200</b>			
5. Operations Personnel							
Operations Chief		<b>John Spencer Jesse Stone - t</b>		Division Supervisor		<b>Derrick Youngerman</b>	
Safety Officer		<b>Ray Hershey</b>		Air Attack			
6. Resources Assigned this Period							
Strike Team/Task Force/Resource Designator	Leader	# Persons	LWD	Drop Off PT./Time	Pick Up PT./Time		
1 O-50015 TFLD	Jyota Smith-Howard	1	9/3	Lake Selmac ICP	Lake Selmac ICP		
2 O-50014 HEQB	Clint Foster	1	9/3	Lake Selmac ICP	Lake Selmac ICP		
3 O-50045 FMOD Toms Timber LLC	Tyler Pacheco	2	9/2	Lake Selmac ICP	Lake Selmac ICP		
4 O-50044 FMOD Cut Rite Inc	Dave Hillsman	2	9/4	Lake Selmac ICP	Lake Selmac ICP		
5 O-50075 FMOD Cut Rite Inc	Scott Opheim	2	9/5	Lake Selmac ICP	Lake Selmac ICP		
6 C-50017 CR2I Redmond IHC	Dave Varon	22	8/31	Lake Selmac ICP	Lake Selmac ICP		
7 C-50016 CRW1 Palomar IHC	Jose Ortega	23	8/29	Lake Selmac ICP	Lake Selmac ICP		
8 C-50004 CRW2 Pacific Coast	Javier Ramos	20	9/4	Lake Selmac ICP	Lake Selmac ICP		
9 **C-50013 CR2I Pacific Oasis 14A	Jason Maza	20	8/31	Lake Selmac ICP	Lake Selmac ICP		
10 **E-50065 ENG6 GE Forestry 1	Edgar Aguilar	3	8/31	Lake Selmac ICP	Lake Selmac ICP		
11 **E-50057 ENG6 Fuego 6	Chase Workman	3	9/1	Lake Selmac ICP	Lake Selmac ICP		
12 E-50058 ENG6 Lomakatsi 65	Antonio Lopez	3	8/31	Lake Selmac ICP	Lake Selmac ICP		
13 E-50059 ENG6 Green Mtn 88	Scott Brennan	3	8/31	Lake Selmac ICP	Lake Selmac ICP		
14 E-50060 ENG6 Sundance 5	Emilio Garcia	3	8/31	Lake Selmac ICP	Lake Selmac ICP		
15 **E-39 WTS2 Sugden 1	Tom Sugden	1	8/31	Lake Selmac ICP	Lake Selmac ICP		
16 E-50056 WTS2 Autobrot 1	Dakota Williams	2	8/31	Lake Selmac ICP	Lake Selmac ICP		
17 E-40003 DZR2 Ace Earth Moving	Wade Comyford	2	9/4	Lake Selmac ICP	Lake Selmac ICP		
18 E-40002 DZR2 Table Mtn. Forestry	Mitchell West	2		Lake Selmac ICP	Lake Selmac ICP		
19 E-40001 MBM2 Morris Forestry LLC	Todd Donahue	2	9/3	Lake Selmac ICP	Lake Selmac ICP		
20							
21 O-50029 Medic 4	Chad Payletz	1	9/5	Lake Selmac ICP	Lake Selmac ICP		
22 O-50022 EMT 4	Jonathon Cahill	1	9/5	Lake Selmac ICP	Lake Selmac ICP		
23 O-50024 EMT 5	Johnna Hyde	1	9/5	Lake Selmac ICP	Lake Selmac ICP		
24 E-50031 AMBO 1	Mike Wertz	2	9/5	Lake Selmac ICP	Lake Selmac ICP		
	Meal count	122					
7. Control Operations: <b>Task:</b> Establish fireline from 4402 to Hwy 199. <b>Purpose:</b> Keep fire south of Elk Valley and Illinois Valley communities. <b>End state:</b> Impacts have been minimized to communities and infrastructure.							
8. Special Instructions: *REMS 1 staged at DP31. **Indicates IA Resources. REAFs Porter, Saunders, Reha and Hughes will contact DIVS upon entering and exiting their respective divisions.							
9. Division/Group Communication Summary							
<b>See Communications Plan</b>							
Prepared by (Resource Unit Ldr) <i>Meredith Butcher/Carolyn Zanotto</i>			Approved by (Planning Sect. Ch.) <i>Aileen Nichols</i>			Date <b>08/23/2023</b>	Time <b>2000</b>



<b>DIVISION ASSIGNMENT LIST</b>			1. Branch		2. Division <b>K</b>	
3. Incident Name <b>Smith River Complex North</b>			4. Operational Period Date: <b>08/24/2023</b> Time: <b>0600-2200</b>			
5. Operations Personnel						
Operations Chief		<b>John Spencer Jesse Stone - t</b>		Division Supervisor		<b>Whitney Machado Silas Baffa - t</b>
Safety Officer		<b>Ray Hershey</b>		Air Attack		
6. Resources Assigned this Period						
Strike Team/Task Force/Resource Designator		Leader	# Persons	LWD	Drop Off PT./Time	Pick Up PT./Time
<b>1</b>	<b>E-50050 ENG3 TMFR Brush</b>	<b>Scott Fenley</b>	<b>4</b>	<b>9/5</b>	<b>Lake Selmac ICP</b>	<b>Lake Selmac ICP</b>
<b>2</b>	<b>E-50043 ENG6 B and B</b>	<b>Tim Bailey</b>	<b>3</b>	<b>9/5</b>	<b>Lake Selmac ICP</b>	<b>Lake Selmac ICP</b>
<b>3</b>						
<b>4</b>	<b>E-50037 WTS2 Lavenbarg</b>	<b>John Dalton</b>	<b>1</b>	<b>9/5</b>	<b>Lake Selmac ICP</b>	<b>Lake Selmac ICP</b>
<b>5</b>	<b>E-50039 DZR2 Barry Brown</b>	<b>Ed Machuse</b>	<b>3</b>	<b>9/5</b>	<b>Lake Selmac ICP</b>	<b>Lake Selmac ICP</b>
<b>6</b>	<b>E-40000 MBM2 Lone Star Ent.</b>	<b>Mike Bunker</b>	<b>2</b>	<b>9/5</b>	<b>Lake Selmac ICP</b>	<b>Lake Selmac ICP</b>
<b>7</b>						
<b>8</b>						
<b>9</b>						
<b>10</b>						
<b>11</b>						
<b>12</b>						
<b>13</b>						
<b>14</b>						
<b>15</b>						
<b>16</b>						
<b>17</b>						
<b>18</b>						
<b>19</b>	<b>O-50013 Medic 1</b>	<b>Joel Bower</b>	<b>1</b>	<b>9/5</b>	<b>Lake Selmac ICP</b>	<b>Lake Selmac ICP</b>
<b>20</b>	<b>O-50029 Medic 3</b>	<b>Stephan Smith</b>	<b>1</b>	<b>9/5</b>	<b>Lake Selmac ICP</b>	<b>Lake Selmac ICP</b>
<b>21</b>	<b>O-50025 EMT 2</b>	<b>James Henson</b>	<b>1</b>	<b>9/5</b>	<b>Lake Selmac ICP</b>	<b>Lake Selmac ICP</b>
<b>22</b>	<b>*O-50015 REMS 1</b>	<b>Dan Blaul</b>	<b>4</b>	<b>9/5</b>	<b>Lake Selmac ICP</b>	<b>Lake Selmac ICP</b>
		<b>Meal count</b>	<b>20</b>			
7. Control Operations: <b>Task:</b> Establish fireline from 4402 to Hwy 199. <b>Purpose:</b> Keep fire south of Elk Valley and Illinois Valley communities. <b>End state:</b> Impacts have been minimized to communities and infrastructure.						
8. Special Instructions: **Indicates IA Resources. REAFs Porter, Saunders, Reha and Hughes will contact DIVS upon entering and exiting their respective divisions.						
9. Division/Group Communication Summary <b>See Communications Plan</b>						
Prepared by (Resource Unit Ldr) <i>Meredith Butcher/Carolyn Zanotto</i>		Approved by (Planning Sect. Ch.) <i>Aileen Nichols</i>		Date <b>08/23/2023</b>	Time <b>2000</b>	

<b>DIVISION ASSIGNMENT LIST</b>				1. Branch		2. Group <b>Structure West</b>	
3. Incident Name <b>Smith River Complex North</b>				4. Operational Period Date: <b>08/24/2023</b> Time: <b>0600-2200</b>			
5. Operations Personnel							
Operations Chief		<b>John Spencer Jesse Stone - t</b>		Group Supervisor		<b>Robert Boles Shannon Clark - t</b>	
Safety Officer		<b>Ray Hershey</b>		Air Attack			
6. Resources Assigned this Period							
Strike Team/Task Force/Resource Designator		Leader	# Persons	LWD	Drop Off PT./Time		Pick Up PT./Time
<b>1</b>	<b>C-50002 CRW2 Lomakatsi</b>	<b>Braulio Maya</b>	<b>20</b>	<b>9/1</b>	<b>Lake Selmac ICP</b>		<b>Lake Selmac ICP</b>
<b>2</b>	<b>O-50070 STEN</b>	<b>Rich McIntyre</b>	<b>1</b>	<b>9/5</b>	<b>Lake Selmac ICP</b>		<b>Lake Selmac ICP</b>
<b>3</b>							
<b>4</b>	<b>E-50042 ENG3 J3 Contracting</b>	<b>Chris Escudero</b>	<b>3</b>	<b>9/5</b>	<b>Lake Selmac ICP</b>		<b>Lake Selmac ICP</b>
<b>5</b>	<b>E-50049 ENG6 Sundance Fire</b>	<b>Dean Norton</b>	<b>3</b>	<b>9/5</b>	<b>Lake Selmac ICP</b>		<b>Lake Selmac ICP</b>
<b>6</b>							
<b>7</b>	<b>E-50005 WTS2 Rouge Basin Fire</b>	<b>Matthew Jordan</b>	<b>1</b>	<b>9/5</b>	<b>Lake Selmac ICP</b>		<b>Lake Selmac ICP</b>
<b>8</b>	<b>E-50036 WTS2 Lavenbarg</b>	<b>Dan Lavenbarg</b>	<b>1</b>	<b>9/5</b>	<b>Lake Selmac ICP</b>		<b>Lake Selmac ICP</b>
<b>9</b>	<b>E-50035 WTS2 Double R&amp;C</b>	<b>Tate Harron</b>	<b>1</b>	<b>9/5</b>	<b>Lake Selmac ICP</b>		<b>Lake Selmac ICP</b>
<b>10</b>	<b>E-50039 DZR2 Barry Brown</b>	<b>Ed Machuse</b>	<b>1</b>	<b>9/5</b>	<b>Lake Selmac ICP</b>		<b>Lake Selmac ICP</b>
<b>11</b>							
<b>12</b>	<b>L/L Task Force South</b>						
<b>13</b>	<b>E-256 ENG5</b>	<b>Brandon McCoy</b>	<b>3</b>	<b>9/4</b>	<b>Lake Selmac ICP</b>		<b>Lake Selmac ICP</b>
<b>14</b>	<b>E-253 ENG6</b>	<b>Rick Sisson</b>	<b>3</b>	<b>9/4</b>	<b>Lake Selmac ICP</b>		<b>Lake Selmac ICP</b>
<b>15</b>	<b>E-139 ENG6</b>	<b>David Melendez</b>	<b>3</b>	<b>9/4</b>	<b>Lake Selmac ICP</b>		<b>Lake Selmac ICP</b>
<b>16</b>	<b>E-255 ENG5</b>	<b>Nick Miller</b>	<b>3</b>	<b>9/4</b>	<b>Lake Selmac ICP</b>		<b>Lake Selmac ICP</b>
<b>17</b>	<b>E-252 ENG5</b>	<b>Brook Hogrefe</b>	<b>3</b>	<b>9/4</b>	<b>Lake Selmac ICP</b>		<b>Lake Selmac ICP</b>
<b>18</b>							
<b>19</b>							
<b>20</b>							
<b>21</b>							
<b>22</b>	<b>O-50023 EMT 3</b>	<b>Trevor Brant</b>	<b>1</b>	<b>9/5</b>	<b>Lake Selmac ICP</b>		<b>Lake Selmac ICP</b>
<b>23</b>							
		<b>Meal count</b>	<b>47</b>				
7. Control Operations: <b>Task:</b> Assess and prep the Hwy 199 corridor and Lone Pine Rd in Div K. <b>Purpose:</b> Minimize fire impacts to private residences in the fire area. <b>End state:</b> Area to be protected is prepped and secured.							
8. Special Instructions:							
9. Division/Group Communication Summary							
<b>See Communications Plan</b>							
Prepared by (Resource Unit Ldr) <i>Meredith Butcher/Carolyn Zanutto</i>				Approved by (Planning Sect. Ch.) <i>Aileen Nichols</i>		Date <b>08/23/2023</b>	Time <b>2000</b>

<b>DIVISION ASSIGNMENT LIST</b>			1. Branch		2. Group <b>Structure East</b>	
3. Incident Name <b>Smith River Complex North</b>			4. Operational Period Date: <b>08/24/2023</b> Time: <b>0600-2200</b>			
5. Operations Personnel						
Operations Chief		<b>John Spencer Jesse Stone - t</b>		Group Supervisor		<b>Miranda Stuart Billy Turner - t</b>
Safety Officer		<b>Ray Hershey</b>		Air Attack		
6. Resources Assigned this Period						
	Strike Team/Task Force/Resource Designator	Leader	# Persons	LWD	Drop Off PT./Time	Pick Up PT./Time
1	<b>E-50041 ENG3 Allied Water Service</b>	<b>Matthew</b>	<b>3</b>	<b>9/5</b>	<b>Lake Selmac ICP</b>	<b>Lake Selmac ICP</b>
2	<b>E-50046 ENG3 Grande Ronde Tribe</b>	<b>Brett daniels</b>	<b>5</b>	<b>9/5</b>	<b>Lake Selmac ICP</b>	<b>Lake Selmac ICP</b>
3	<b>E-50045 ENG6 Grande Ronde Tribe</b>	<b>Waylon Rich</b>	<b>3</b>	<b>9/5</b>	<b>Lake Selmac ICP</b>	<b>Lake Selmac ICP</b>
4	<b>E-50051 ENG6 Woodland Hills FD</b>	<b>Lance Wollebaek</b>	<b>3</b>	<b>9/5</b>	<b>Lake Selmac ICP</b>	<b>Lake Selmac ICP</b>
5						
6						
7	<b>TASK FORCE 1*</b>					
8	<b>E-408 ENG4</b>	<b>Mike Misek</b>	<b>3</b>	<b>8/29</b>	<b>Lake Selmac ICP</b>	<b>Lake Selmac ICP</b>
9	<b>E-403 ENG6</b>	<b>David Bryant</b>	<b>3</b>	<b>8/26</b>	<b>Lake Selmac ICP</b>	<b>Lake Selmac ICP</b>
10	<b>E-4000 WTS2 Darrah Logging 4</b>	<b>Bob Cretton</b>	<b>1</b>	<b>8/30</b>	<b>Lake Selmac ICP</b>	<b>Lake Selmac ICP</b>
11						
12						
13						
14						
15						
16						
17						
18						
19						
20						
21	<b>O-50027 Medic 6</b>	<b>Alex Vera</b>	<b>1</b>	<b>9/5</b>	<b>Lake Selmac ICP</b>	<b>Lake Selmac ICP</b>
22						
		<b>Meal count</b>	<b>22</b>			
7. Control Operations: <b>Task:</b> Assess and prep the Hwy 199 corridor and Lone Pine Rd in Div K. <b>Purpose:</b> Minimize fire impacts to private residences in the fire area. <b>End state:</b> Area to be protected is prepped and secured.						
8. Special Instructions:						
9. Division/Group Communication Summary <b>See Communications Plan</b>						
Prepared by (Resource Unit Ldr) <i>Meredith Butcher/Carolyn Zanotto</i>		Approved by (Planning Sect. Ch.) <i>Aileen Nichols</i>		Date <b>08/23/2023</b>	Time <b>2000</b>	

<b>DIVISION ASSIGNMENT LIST</b>				1. Branch		2. Group <b>Contingency West</b>	
3. Incident Name <b>Smith River Complex North</b>				4. Operational Period Date: <b>08/24/2023</b> Time: <b>0600-2200</b>			
5. Operations Personnel							
Operations Chief		<b>John Spencer Jesse Stone - t</b>		Group Supervisor		<b>Derreck Johnson</b>	
Safety Officer		<b>Ray Hershey</b>		Air Attack			
6. Resources Assigned this Period							
Strike Team/Task Force/Resource Designator		Leader	# Persons	LWD	Drop Off PT./Time		Pick Up PT./Time
<b>1</b>	<b>O-60001TFLD</b>	<b>Tarilton Beall</b>	<b>1</b>	<b>9/5</b>	<b>Lake Selmac ICP</b>		<b>Lake Selmac ICP</b>
<b>2</b>	<b>O-60002 TFLD</b>	<b>Doug Thackery</b>	<b>1</b>	<b>9/5</b>	<b>Lake Selmac ICP</b>		<b>Lake Selmac ICP</b>
<b>3</b>	<b>O-60003 HEQB</b>	<b>Hunter Stratton</b>	<b>1</b>	<b>9/5</b>	<b>Lake Selmac ICP</b>		<b>Lake Selmac ICP</b>
<b>4</b>	<b>O-60004 HEQB</b>	<b>Travis Wyndearo</b>	<b>1</b>	<b>9/5</b>	<b>Lake Selmac ICP</b>		<b>Lake Selmac ICP</b>
<b>5</b>	<b>O-60005 HEQB</b>	<b>Ivan Carrier</b>	<b>1</b>	<b>9/5</b>	<b>Lake Selmac ICP</b>		<b>Lake Selmac ICP</b>
<b>6</b>	<b>O-60006 HEQB – t</b>	<b>George Sheppard</b>	<b>1</b>	<b>9/5</b>	<b>Lake Selmac ICP</b>		<b>Lake Selmac ICP</b>
<b>7</b>	<b>O-60009 SFAL Crow Cutting</b>		<b>1</b>	<b>9/5</b>	<b>Lake Selmac ICP</b>		<b>Lake Selmac ICP</b>
<b>8</b>	<b>O-60007 FMOD Armijo Kyle</b>		<b>2</b>	<b>9/5</b>	<b>Lake Selmac ICP</b>		<b>Lake Selmac ICP</b>
<b>9</b>	<b>O-60008 FMOD C &amp; K Wildland Fire</b>	<b>Cameron Hartness</b>	<b>2</b>	<b>9/5</b>	<b>Lake Selmac ICP</b>		<b>Lake Selmac ICP</b>
<b>10</b>	<b>O-60010 FMOD Arrows Timber &amp; Fire</b>		<b>2</b>	<b>9/5</b>	<b>Lake Selmac ICP</b>		<b>Lake Selmac ICP</b>
<b>11</b>							
<b>12</b>	<b>E-60000 MBM2 Parker Excavation</b>	<b>Malachi Parker</b>	<b>2</b>	<b>9/5</b>	<b>Lake Selmac ICP</b>		<b>Lake Selmac ICP</b>
<b>13</b>	<b>E-60001 MBM2 Parker Excavation</b>		<b>2</b>	<b>9/5</b>	<b>Lake Selmac ICP</b>		<b>Lake Selmac ICP</b>
<b>14</b>	<b>E-60002 DZR1 Hyde Trucking</b>	<b>Luke Hyde</b>	<b>2</b>	<b>9/5</b>	<b>Lake Selmac ICP</b>		<b>Lake Selmac ICP</b>
<b>15</b>	<b>E-60003 DZR1 Ira IV Excavating</b>	<b>Ed Podoll</b>	<b>2</b>	<b>9/5</b>	<b>Lake Selmac ICP</b>		<b>Lake Selmac ICP</b>
<b>16</b>	<b>E-60004 DZR1 Gregg Hyde Logging</b>	<b>Gregg Hyde</b>	<b>2</b>	<b>9/5</b>	<b>Lake Selmac ICP</b>		<b>Lake Selmac ICP</b>
<b>17</b>	<b>E-60010 DZR1 Pacific Ridgeline</b>		<b>2</b>	<b>9/5</b>	<b>Lake Selmac ICP</b>		<b>Lake Selmac ICP</b>
<b>18</b>	<b>E-60005 DZR3 Arrows Timber &amp; Fire</b>	<b>Dan Syfert</b>	<b>2</b>	<b>9/5</b>	<b>Lake Selmac ICP</b>		<b>Lake Selmac ICP</b>
<b>19</b>	<b>E-60006 DZR3 Ira IV Excavating</b>	<b>Ed Podoll III</b>	<b>2</b>	<b>9/5</b>	<b>Lake Selmac ICP</b>		<b>Lake Selmac ICP</b>
<b>20</b>							
<b>21</b>							
<b>22</b>							
		<b>Meal count</b>	<b>29</b>				
7. Control Operations: <b>Task:</b> Brush the 18N11 Rd from Hwy 199 east to forest road 444. <b>Purpose:</b> Use the district border as a contingency line. <b>End state:</b> Area to be protected is prepped and secured.							
8. Special Instructions: UTVs E-60007, E-60008, E-60009 Grayback Forestry.							
9. Division/Group Communication Summary							
<b>See Communications Plan</b>							
Prepared by (Resource Unit Ldr) <i>Meredith Butcher/Carolyn Zanotto</i>			Approved by (Planning Sect. Ch.) <i>Aileen Nichols</i>			Date <b>08/23/2023</b>	Time <b>2000</b>

<b>DIVISION ASSIGNMENT LIST</b>			1. Branch		2. Group <b>Contingency East</b>	
3. Incident Name <b>Smith River Complex North</b>			4. Operational Period Date: <b>08/24/2023</b> Time: <b>0600-2200</b>			
5. Operations Personnel						
Operations Chief		<b>John Spencer Jesse Stone - t</b>		Group Supervisor		<b>Randy Anderson Marc Johnson - t</b>
Safety Officer		<b>Ray Hershey</b>		Air Attack		
6. Resources Assigned this Period						
Strike Team/Task Force/Resource Designator		Leader	# Persons	LWD	Drop Off PT./Time	Pick Up PT./Time
1						
2						
3						
4						
5						
6						
7						
8						
9						
10						
11						
12						
13						
14						
15						
16						
17						
18						
19						
20						
21						
22						
		<b>Meal count</b>				
7. Control Operations: <b>Task:</b> Scout for contingency line southeast of Hwy 199. <b>Purpose:</b> Validate alternate and contingency PACE lines. <b>End state:</b> PACE lines have been prepped to protect the communities to the north and northeast (Takilma and Sun Star).						
8. Special Instructions:						
9. Division/Group Communication Summary <b>See Communications Plan</b>						
Prepared by (Resource Unit Ldr) <i>Meredith Butcher/Carolyn Zanotto</i>			Approved by (Planning Sect. Ch.) <i>Aileen Nichols</i>		Date <b>08/23/2023</b>	Time <b>2000</b>

<b>DIVISION ASSIGNMENT LIST</b>			1. Branch		2. Division <b>Night North</b>	
3. Incident Name <b>Smith River Complex North</b>			4. Operational Period Date: <b>08/24/2023 – 8/25/2023</b> Time: <b>1500-0700</b>			
5. Operations Personnel						
Operations Chief		<b>Larry Pingle</b>		Division Supervisor		
Safety Officer		<b>Ray Hershey</b>		Air Attack		
6. Resources Assigned this Period						
	Strike Team/Task Force/Resource Designator	Leader	# Persons	LWD	Drop Off PT./Time	Pick Up PT./Time
<b>1</b>	<b>RSF Surge Resources – 4 engines</b>	<b>Monty Edwards</b>	<b>12</b>			
<b>2</b>						
<b>3</b>	<b>Mutual Aid Task Force</b>		<b>40</b>			
<b>4</b>						
<b>5</b>						
<b>6</b>						
<b>7</b>						
<b>8</b>						
<b>9</b>						
<b>10</b>						
<b>11</b>						
<b>12</b>						
<b>13</b>						
<b>14</b>						
<b>15</b>						
<b>16</b>						
<b>17</b>						
<b>18</b>						
<b>19</b>						
<b>20</b>						
<b>21</b>						
<b>22</b>						
		<b>Meal count</b>	<b>120</b>		<b>Includes double lunch</b>	
7. Control Operations: <b>Task:</b> Structure protection. <b>Purpose:</b> Protect structures. <b>End state:</b> Impacts have been minimized to communities and infrastructure.						
8. Special Instructions:						
9. Division/Group Communication Summary						
<b>See Communications Plan</b>						
Prepared by (Resource Unit Ldr) <i>Meredith Butcher/Carolyn Zanotto</i>		Approved by (Planning Sect. Ch.) <i>Aileen Nichols</i>		Date <b>08/23/2023</b>	Time <b>2000</b>	

## AIR OPERATIONS SUMMARY ICS-220

<b>Incident Name / Number</b> SMITH RIVER COMPLEX CA-SRF-000968	<b>Sunrise</b> 6:32	<b>Startup</b> 7:02	<b>Cutoff</b> 19:32	<b>Sunset</b> 20:05
--	------------------------	------------------------	------------------------	------------------------

**General Remarks, Safety Notes, Hazards, Air Operations Special Equipment, etc.**  
 TRACK ALL DIPSITE LOCATIONS / NUMBER OF DIPS / GALLONS TAKEN.  
 TRACK ALL DROP LOCATIONS / NUMBER OF DROPS / GALLONS DROPPED.  
 ALL GPS DATA TO BE COLLECTED IN DEGREES, MINUTES, DECIMAL MINUTES FORMAT.  
 AVOID Aerial Application of Retardant / Foam / Agent within 300' of Waterways, Bodies of Water, etc.  
 If Retardant / Foam / Agent is Dropped Within These Areas Immediately Notify the AOB and Provide the Following Information: Lat / Long, Estimated Number of Gallons and a Map Detailing The Area. Watch for Powerlines. Caution when operating in non-TFR areas.

Frequencies	TX	Tone	RX	Tone	AM / FM	<a href="#">Update</a>
Command-South	168.0750	(T3) 131.8	170.4250	(T3) 131.8	FM	
Command North Bowlan	162.6125	(T31) 186.2	170.5000	(T17) 67.0	FM	
Command North Fiddler	162.6125	(T30) 179.9	170.5000	(T17) 67.0	FM	
AIR/GROUND - TACTICAL	169.4875	0.0000	169.4875	0.0000	FM	
AIR/AIR ROTARY WING	123.7250	0.0000	123.7250	0.0000	AM	
TFR	126.0750	0.0000	126.0750	0.0000	AM	
AIR TACTICS	173.7000	0.0000	173.7000	0.0000	FM	
AIR/GROUND COMMAND	173.8500	0.0000	173.8500	0.0000	AM	
VMED 29 MEDICAL North	155.3475	156.7	155.3475	156.7	AM	
TOLC	168.1375	0.0000	168.1375	0.0000	FM	
CALCORD - MEDICAL South	156.0750	156.7 (6)	156.0750	156.7 (6)	FM	
AIRGUARD - Emergency Only	168.6250	110.9 (1)	168.6250	0.0000	FM	

Your Sunrise and Sunset info has not been updated for the current Op period

<b>Time Prepared</b> 1900	<b>Date Prepared</b> Wednesday, August 23, 2023	<b>Prepared By</b> John Croffy/Steve Markason
<b>Shutdown</b> 20:35	<b>Operational Period - Date</b> Thursday August 24, 2023	<b>Operational Period - Time</b> 0700-2100

<b>Helibase Information</b> Name Gasquet Latitude 41 50.667 Longitude 123 59.455 Name Cave Junction Latitude 42 06.250 Longitude 123 40.916 (use page 2 if needed)	<b>TFR Information</b> Request # Rectangle NM Altitude: 8,000 MSL Multi Lat Centerpoint: Multi Long NOTAMS: 3/9897 Frequency 126.0750 <a href="http://tfr.faa.gov/tfr2/list.html">http://tfr.faa.gov/tfr2/list.html</a>
---	---

<b>Rescue Ship Information</b> Name CHP H14 Phone Make/Model Astar B3 Location Redding Request Procedure for These Aircraft: See Below for OR Aircraft See Medical Plan For Additional Info	<b>Trainee</b> Name Phone Location Request Procedure for These Aircraft: See Below for OR Aircraft See Medical Plan For Additional Info
--	---

Position	Name	Phone	Trainee	Phone
AOBD	John Croffy	805-440-6186		
ASGS	Curt Warner	805-478-1231		
HEBM	George Leite	360-581-8428		
HLCO	Casey Jones	559-696-3878	Antonio Jimenez	530-310-5797
ATGS	Rick Thompson	970-209-6989	Matt Oakleaf	208-995-6042
UR31	Steve Ramaekers	208-473-8708		
UR32	Zach Freundlich	508-380-1904		
	Cave Helibase	208-891-6878		ivhb2023@gmail.com
NORTH AOBD	Steve Markason	307-690-5185		
NORTH ASGS	Jim Dotson	307-413-2024	Bert Smith	406-660-7371

HELICOPTERS ( Use page 2 if Needed )													
FAA #	Type	Make/Model	Helibase	Avail	Start	Remarks	FAA #	Type	Make/Model	Helibase	Avail	Start	Remarks
HT 16FH	1	UH-60	Cave	0800	0830	LL BUCKET	HB 625CK	1	S-61N	Merlin	0800	0830	LL BUCKET
HB 534VG	1	UH-60	Cave	0800	0830	LL BUCKET	HT 917	1	S-61	Merlin	0800	0830	LL TANK
HB 391SH	1	UH-60	Cave	0800	0830	LL BUCKET	H-18BH	3	Bell 407	Cove	0800	0830	HLCO
HB 699RH	1	KMAX	Cave	0800	0830	LL BUCKET	H-942AE	3	AS-350B3E	Crescent	0800	0830	PAX/RECON/LL/PSD
H-527	2	Bell 212	Cave	0800	0830	LL BUCKET							
UR31	3	Alta X	Gasquet	TBD	TBD	IR/PSD	UR32	3	Alta X/DJI	Cave	TBD	TBD	
SOUTH MEDICAL A/C							NORTH MEDICAL A/C						
TBD	3	MH-65	Humboldt			Coast Guard	20695	1	HH-60M	Roseburg			OR National Guard
H-902	2	UH1	Kneeland			Cal Fire	H-38HX	3	AS-250B3	Sun River			Shorthaul - 187 nm

FIXED WING ( Use Page 2 if Needed )													
FAA #	Type	Make/Model	Base	Avail	Start	Remarks	FAA #	Type	Make/Model	Base	Avail	Start	Remarks
N-7MZ	1	C-501	RDD	0800	0830	ATGS							

# INCIDENT RADIO COMMUNICATIONS PLAN (ICS 205)

## Controlled Unclassified Information//Basic

1. Incident Name:		2. Date/Time Prepared:		3. Operational Period:						
SMITH RIVER COMPLEX NORTH		Date: 08/20/2023 Time: 19:20		Date/Time From: 08/24/2023 06:00 Date/Time To: 08/25/2023 06:00						
<b>4. Basic Radio Channel Use:</b>										
Zone Group	Ch #	Function	Channel Name/Trunked Radio System Talkgroup	Assignment	RX Freq	RX Tone/NAC	TX Freq	TX Tone/NAC	Mode (A, D, or M)	Remarks
	1	TACTICAL	TAC 1	UNASSIGNED	168.0500	192.8	168.0500	192.8	A	UNASSIGNED
	2	TACTICAL	TAC 2	DIV I	168.2000	192.8	168.2000	192.8	A	
	3	TACTICAL	TAC 3	DIV K	168.6000	192.8	168.6000	192.8	A	
	4	TACTICAL	TAC 4	STRUCTURE	166.7250	192.8	166.7250	192.8	A	UNASSIGNED
	5	TACTICAL	TAC 5	DIV H	166.7750	192.8	166.7750	192.8	A	
	6	TACTICAL	TAC 6	UNASSIGNED	168.2500	192.8	168.2500	192.8	A	
	7	CMD	BOLAN ADM	ALL DIV	170.5000	67.0	162.6125	186.2	A	
	8	CMD	FIDDLER ADM	ALL DIV	170.5000	67.0	162.6125	179.9	A	
	9	TACTICAL	VTAC 11	STRUCTURE	151.1375	156.7	151.1375	156.7	A	STRUCTURE GROUP
	10	TACTICAL	ODF REDNET	IA	151.3400	156.7	151.3400	156.7	A	
	11	TACTICAL	NIFC T1	DIV D	168.0500	131.8	168.0500	131.8	A	
	12	TACTICAL	NIFC T4	DIV MM	166.7250	131.8	166.7250	131.8	A	
	13	AIR TO GROUND	A/G CMD	ALL DIVS	173.8500	000.0	173.8500	000.0	A	BRANCH AND DIVISION USE
	14	AIR TO GROUND	A/G TAC	ALL DIVS	169.4875	000.0	169.4875	000.0	A	AIR TO GROUND TACTICAL
	15	AIR MEDICAL	VMED 29	ALL DIVS	155.3475	156.7	155.3475	156.7	A	EMS AIR COORDINATION
	16	AIR TO GROUND	AIRGUARD	ALL DIVS	168.6250	000.0	168.6250	110.9	A	EMERGENCY AIRCRAFT CONTACT
<b>5. Special Instructions:</b>										
<b>6. Prepared By COML</b>										
Name: Bruce Hanna				Signature: /s/ Bruce Hanna						
<b>ICS 205</b>										
IAP Page				Date/Time: 8/23/2023 17:52						



# INCIDENT RADIO COMMUNICATIONS PLAN (ICS 205)

## Controlled Unclassified Information//Basic

1. Incident Name:		2. Date/Time Prepared:		3. Operational Period:							
SMITH RIVER COMPLEX NORTH INITIAL ATTACK ZONE		Date: 08/21/2023 Time: 20:00	Date/Time From: 08/24/23 06:00	Date/Time To: 08/25/23 06:00							
4. Basic Radio Channel Use:											
Zone Group	Ch #	Function	Channel Name/Trunked Radio System Talkgroup	Assignment	RX Freq	RX Tone/NAC	TX Freq	TX Tone/NAC	Mode (A, D, or M)	Remarks	
IA	1	CMD	MONKEY	IA	172.3750	000.0	164.1750	110.9	A	6 RIVERS MONKEY RIDGE	
IA	2	CMD	WILD RVR	IA	171.3875	67.0	164.9625	67.0	A	WILD RIVERS	
IA	3	CMD	GOLD BCH	IA	170.3750	67.0	164.1250	67.0	A	GOLD BEACH	
IA	4	CMD	ODF SEXTON	IA	151.1450	000.0	159.2850	179.9	A	ODF SEXTON	
IA	5	CMD	ODF GRAY BK	IA	151.1450	000.0	159.2850	151.4	A	ODF GREY BACK	
IA	6	TAC	ODF RED	IA	151.3400	000.0	151.3400	156.7	A	ODF RED	
IA	7	A/G	ODF WHITE	IA	151.3100	000.0	151.3100	156.7	A	ODF WHITE A/G	
IA	8	TAC	ODF RVT	IA	159.2400	000.0	159.2400	156.7	A	ODF RVT	
IA	9	A/G	FS A/G51	IA	168.3125	000.0	168.3125	000.0	A	A/G 51	
IA	10	A/G	FS A/G62	IA	169.3625	000.0	169.3625	000.0	A	A/G 62	
IA	11	CMD	BOLAN ADM	IA	170.5000	67.0	162.6125	186.2	A		
IA	12	CMD	FIDDLER ADM	IA	170.5000	67.0	162.6125	179.9	A		
IA	13	A/G	A/G CMD	IA	173.8500	000.0	173.8500	000.0	A		
IA	14	A/G	A/G TAC	IA	169.4875	000.0	169.4875	000.0	A		
IA	15	A/G	VMED 29	IA	155.3475	156.7	155.3475	156.7	A	EMS AIR COORDINATION	
IA	16	A/G	CAL CORD	IA	156.0750	156.7	156.0750	156.7	A	EMS AIR CORD	
5. Special Instructions:											
6. Prepared By				Name: Bruce Hanna				Signature: /s/ Bruce Hanna			
(Communications Unit Leader)											
ICS 205				IAP Page				Date/Time: 8/23/23 17:15			

# ICS 205 - INCIDENT RADIO COMMUNICATIONS PLAN

CONTROLLED UNCLASSIFIED  
INFORMATION//BASIC

1. Incident Name: SMITH RIVER COMPLEX - SOUTH Incident Channels		2. Date/Time Prepared Date: 08/23/2023 Time: 1930		3. Operational Period: Date From: 08/24/23 Time From: 0700		Date To: 08/25/23 Time To: 0700			
4. Communications									
Ch#	Function	Name	Assigned To	Rx Freq	Rx Tone	Tx Freq	Tx Tone	Mode	Notes
1	COMMAND	NIFC C3	ALL DIVS	170.4250	(T3) 131.8	168.0750	(T3) 131.8	A	CAMP 6
2	COMMAND	NIFC C34	ALL DIVS	173.9750	(T3) 131.8	164.8625	(T3) 131.8	A	MONKEY RIDGE
3	COMMAND	NIFC C35	ALL DIVS	173.8625	(T3) 131.8	163.8250	(T3) 131.8	A	SHIP MTN LOOKOUT
4	FOREST	SRF 12	EMER BACKUP	172.3750	0.0	164.1750	(T12) 127.3	A	SRF TONE 12, GORDON MTN
5	FOREST	SRF 4	EMER BACKUP	172.3750	0.0	164.1750	(T4) 136.5	A	SRF TONE 4, SHIP MTN
6	TACTICAL	NIFC T1	D	168.0500	(T3) 131.8	168.0500	(T3) 131.8	A	
7	TACTICAL	NIFC T3	A	168.6000	(T3) 131.8	168.6000	(T3) 131.8	A	
8	TACTICAL	NIFC T4	MM	166.7250	(T3) 131.8	166.7250	(T3) 131.8	A	
9	TACTICAL	NIFC T5	PP, DIVIDE STR GP	166.7750	(T3) 131.8	166.7750	(T3) 131.8	A	
10	TACTICAL	NIFC T6	SS, VV	168.2500	(T3) 131.8	168.2500	(T3) 131.8	A	
11	TACTICAL	VFIRE 22	B	154.2650	(T6) 156.7	154.2650	(T6) 156.7	A	
12	TACTICAL	VFIRE 24	GASQT STR GP/NIGHT	154.2725	(T6) 156.7	154.2725	(T6) 156.7	A	GASQUET STRUCTURE/NIGHT
13	A/G CMD	A/G CMD	ALL DIVS	173.8500	0.0	173.8500	0.0	A	OPS, BRANCH AND DIVISION USE
14	A/G TAC	A/G TAC	ALL DIVS	169.4875	0.0	169.4875	0.0	A	AIR TO GROUND TACTICAL
15	TACTICAL	CALCORD	ALL DIVS	156.0750	(T6) 156.7	156.0750	(T6) 156.7	A	EMS AIR COORDINATION
16	AIRGUARD	AIRGUARD	ALL DIVS	168.6250	0.0	168.6250	(T1) 110.9	A	EMERGENCY
17									
18									
19									
20	AIRGUARD	AIRGUARD	ALL DIVS	168.6250	0.0	168.6250	(T1) 110.9	A	EMERGENCY
5. Special Instructions									
CURRENT CLONE: SRC818. COMMAND CHANNELS LINKED. FIND WHICH ONE WORKS BEST IN YOUR OPERATIONAL AREA. SMITH RIVER COMPLEX - SOUTH COMMUNICATIONS PHONE # 760-220-2863									
6. Prepared by (Communications Unit Leader): Name: CHRIS OLIVER COML(t)								Signature: <i>Chris Oliver</i>	
ICS 205 - CONTROLLED UNCLASSIFIED INFORMATION//BASIC								Date/Time: 08/23/23	
								1930	

**PREVENT SEXUAL HARASSMENT**

SEXUAL HARASSMENT at work, including emergency incidents, occurs whenever unwelcome conduct on the basis of gender, adversely affects a person’s ability to do their job, and contributes to a hostile work environment. Sexual harassment includes, but is not limited to, the following types of conduct:

- Unwelcome sexual advances, requests for sexual favors, discussing sexual activities, telling off-color jokes, unnecessary touching, displaying sexually suggestive pictures, using demeaning or inappropriate terms, using indecent gestures, using crude and offensive language, commenting on physical attributes, to name a few.

Inappropriate behavior is harassment, including sexual and racial harassment and shall not be tolerated. Part of my job on the fire is to be sure everyone is experiencing a safe and respectful workplace. If you see something say something!

**Training**

If you are ordered as a trainee you can bring me your task book along with your red card or email it to [Team13trsp@outlook.com](mailto:Team13trsp@outlook.com) and I will enter you into the training database for the fire. If you have questions feel free to call, text, email, or drop in.

Margaret Dietrich  
Human Resource Specialist/Training Specialist  
Cell 360-701-3154, or [Team13trsp@outlook.com](mailto:Team13trsp@outlook.com)



**LOGISTICS**

**Kitchen Hours**

- Breakfast 0530 – 0900
- Lunch/Water/ICE available at ICP
- Dinner 1730 **Swing Shift Only**
- Dinner 1800 – 2200

**Supply**

- Open 0600 – 2100

**Fuel Tender**

- Open 0600 – 1000
- Open 1500 – 2100

**Showers**

- Open 0500 – 1200
- Open 1400 – 2200

**Laundry – (located next to showers)**

- Open 0500-2200 24hr turnaround

# Transportation

Smith River Complex North

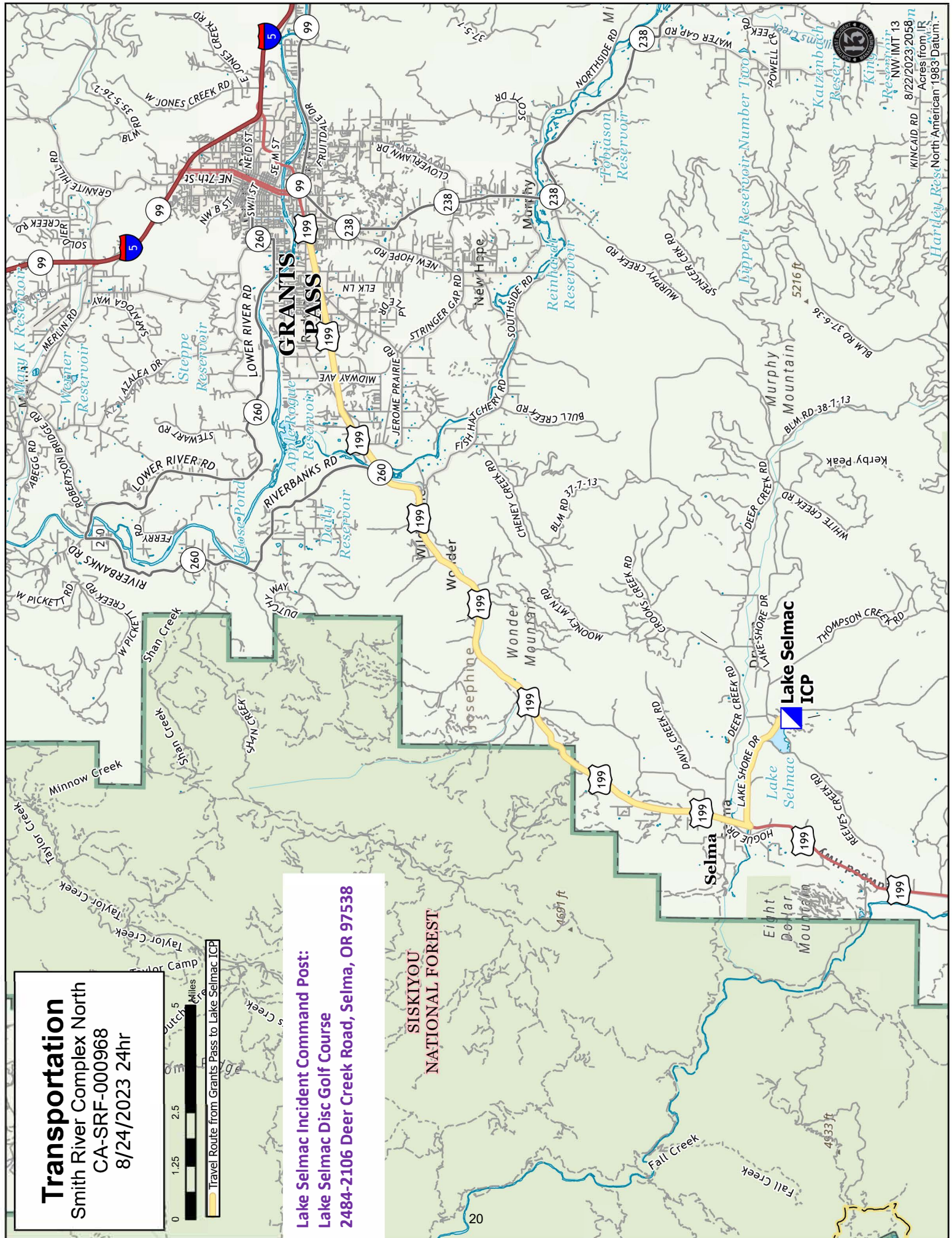
CA-SRF-000968

8/24/2023 24hr



Travel Route from Grants Pass to Lake Selmac ICP

**Lake Selmac Incident Command Post:**  
**Lake Selmac Disc Golf Course**  
**2484-2106 Deer Creek Road, Selma, OR 97538**



Bureau of Land Management  
NW IMT 13  
8/22/2023 20:58:07  
Acres from IR  
North American 1983 Datum

**RETURN TO PLANNING OPS BY 1300 HRS**  
**Via radio (preferred method), text, email, photo, or cell phone**  
**Project for Next Operational Period and 48 & 72 hours in the Future**

<b>DIVISION PLANNING SHEET</b>		Division/ Group	Name Of Division /Group Supervisor		
Next Operational Period Date:					
Operations and Resource unit text number and e-mail					
<input type="checkbox"/> - Roll over assigned Resources <input type="checkbox"/> -Excess resources <input type="checkbox"/> -Correction to 204					
E or C number	Strike Team/Task Force/ Resource Designator	Leader	Number Persons	Comments	
<input type="checkbox"/> -Request for additional Resources					
Number	Type	Resource Kind	Number	Type	Resource Kind
Operational Projection/Resource Needs/Excess Resources (48 hours):					
Operational Projection/Resource Needs/Excess Resources (72 hours):					
Comments					





# MEDICAL PLAN (206 WF)

1. Incident/Project Name				2. Operational Period				
<b>Smith River Complex North</b>				Date/Time: <b>8/24 0600 – 8/25 0600</b>				
<b>3. Ambulance Services</b>								
Name	Complete Address	Phone	Advanced Life Support (ALS)					
			Yes	No				
AMR	Cave Junction, OR	911	X					
<b>4. Air Ambulance Services</b>								
Name	Phone	Type of Aircraft & Capability						
Meracy Flight	1-800-903-9000 (Press 0)	Critical Care Team of Paramedic and RN 24 hr, 100'x100' LZ.						
REACH	1-800-338-4045	Critical Care Team of Paramedic and RN 24 hr, 100'x100' LZ.						
Teton Short Haul	Smith North Comms/Rogue CC	ALS, Short Haul, Daytime-Sunriver, OR						
National Guard Hoist	Smith North Comms /NWCC	24 hr, Roseburg, OR						
<b>5. Hospitals</b>								
Name	Degrees Decimal Minutes		Travel Time From ICP		Phone	Helipad		Level of Care
	Lat:		Air	Gnd.		Yes	No	
Asante 3 Rivers Medical Center (Grants Pass, OR)	42° 25.27' N		20 Min	90 Min.	541-472-7081	X		Level III Trauma
	Long:	123° 20.56' W						
Asante Rogue Regional Medical Center (Medford, OR)	42° 19.05' N		40 Min	120 Min.	541-789-7367	X		Level II Trauma
	Long:	122° 50.00' W						
Legacy Emanuel Hospital (Portland, OR)	45° 32.668' N		1.5 Hrs.	5 Hrs.	503-413-4121	X		Level I Trauma Burn Center
	Long:	122° 40.293' W						
Sutter Coast Hospital (Crescent City, CA)	41° 46.27454' N		X	2 Hrs.	707-464-8888		X	Level IV Trauma
	Long:	124° 11.537' W						
Mercy Medical Center (Redding, CA)	40° 34.14' N		1 Hr.	4 Hrs.	530-225-6000	X		Level II Trauma
	Long:	122° 23.97' W						
UC Davis Medical Center (Sacramento, CA)	38° 33.20' N		2 Hrs.	6 Hrs.	916-734-3636	X		Level I Trauma Burn Center
	Long:	121° 27.28' W						
<b>ICP</b>	<b>EMS Responders &amp; Capability:</b>		James Brown MEDL, EMPF 360-775-5413 Ben Meacham MEDL, EMTF 360-921-3817 Mark Notaras MEDL, EMTF 509-386-7860					
	Equipment Available on Scene:		ALS Kit, LP15 defib, O2, OTC meds					
	Medical Emergency Channel:		Smith River North Communications Plan					
	ETA for Ambulance to Scene:							
	Air:		30 – 60 min					
	Ground:		30 – 60 min					
	Approved Heli-Spot							
<b>DIV H</b>	<b>EMS Responders &amp; Capability:</b>		Medic 2 Erica Jackson 662-588-2328 ALS Kit/AED EMT 1 Lisa Johnson 909-632-5999 BLS Kit/AED REMS 2 Brady Graham 541-282-4637 ALS Kit/UTV Rope Rescue					
	Equipment Available on Scene:		ALS Kit, defib, O2, OTC meds					
	Medical Emergency Channel:		Smith River North Communications Plan					
	ETA for Ambulance to Scene:							
	Air:		30-60 min					
	Ground:		60 min					
	Approved Heli-Spot							
<b>DIV I</b>	<b>EMS Responders &amp; Capability:</b>		Medic 4 Chad Payletz 954-326-9006 ALS Kit/AED EMT 5 Johnna Hyde 218-343-7491 BLS Kit/AED EMT 4 Jonathon Cahill 319-431-1663 BLS Kit/AED AMBO 1 Mike Wertz 928-303-0856 ALS 4X4 Ambulance					
	Equipment Available on Scene:		ALS Kit, defib, O2, OTC meds					
	Medical Emergency Channel:		Smith River North Communications Plan					
	ETA for Ambulance to Scene:							
	Air:		30-60 min					
	Ground:		60 min					
	Approved Heli-Spot							
Lat:								
Long:								



# MEDICAL PLAN (206 WF)

<b>DIV K</b>	<b>EMS Responders &amp; Capability:</b>	<b>Medic 1 Joel Bower</b> 360-461-7390 ALS Kit/AED <b>Medic 3 Stephan Smith</b> 636-748-0373 ALS Kit/AED <b>EMT 2 James Henson</b> 208-316-4658 BLS Kit/AED <b>REMS 1 Dan Blaul</b> 949-577-2663 ALS Kit/UTV Rope Rescue
	Equipment Available on Scene:	ALS Kit, defib, O2, OTC meds
	Medical Emergency Channel:	Smith River North Communications Plan
	ETA for Ambulance to Scene:	
	Air:	30-60 min
	Ground:	60 min
	Approved Heli-Spot	
	Lat: Long:	
<b>STRUCTURE EAST</b>	<b>EMS Responders &amp; Capability:</b>	<b>Medic 6 Alex Vera</b> 773-698-3224 ALS Kit/AED
	Equipment Available on Scene:	ALS Kit, defib, O2, OTC meds
	Medical Emergency Channel:	Smith River North Communications Plan
	ETA for Ambulance to Scene:	
	Air:	30-60 min
	Ground:	60 min
	Approved Heli-Spot	
	Lat: Long:	
<b>STRUCTURE WEST</b>	<b>EMS Responders &amp; Capability:</b>	<b>EMT 3 Trevor Brant</b> 217-622-9158 BLS Kit/AED
	Equipment Available on Scene:	BLS Kit, defib, O2
	Medical Emergency Channel:	Smith River North Communications Plan
	ETA for Ambulance to Scene:	
	Air:	30-60 min
	Ground:	60 min
	Approved Heli-Spot	
	Lat: Long:	
<b>CAVE HELIBASE</b>	<b>EMS Responders &amp; Capability:</b>	<b>Medic 5 Ryan Shank</b> 717-490-4990 ALS Kit/AED
	Equipment Available on Scene:	ALS Kit, defib, O2, OTC meds
	Medical Emergency Channel:	Smith River North Communications Plan
	ETA for Ambulance to Scene:	
	Air:	
	Ground:	10 min
	Approved Heli-Spot	
	Lat: Long:	

Prepared By (Medical Unit Leader)	Date	Reviewed By (Safety Officer)	Date
Ben Meacham MEDL	8/23/2023	Ray Hershey SOF2	8/23/2023
Signature: <i>Ben Meacham</i>		Signature: <i>Ray Hershey</i>	

# MEDICAL PLAN (ICS 206 WF)

Controlled Unclassified Information//Basic

## Medical Incident Report

**FOR A NON-EMERGENCY INCIDENT, WORK THROUGH CHAIN OF COMMAND TO REPORT AND TRANSPORT INJURED PERSONNEL AS NECESSARY.**

**FOR A MEDICAL EMERGENCY: IDENTIFY ON-SCENE INCIDENT COMMANDER BY NAME AND POSITION AND ANNOUNCE "MEDICAL EMERGENCY" TO INITIATE RESPONSE FROM IMT COMMUNICATIONS/DISPATCH.**

**Use the following items to communicate situation to communications/dispatch.**

**1. CONTACT COMMUNICATIONS / DISPATCH** (Verify correct frequency prior to starting report)

*Ex: "Communications, Div. Alpha. Stand-by for Emergency Traffic."*

**2. INCIDENT STATUS:** Provide incident summary (including number of patients) and command structure.

*Ex: "Communications, I have a Red priority patient, unconscious, struck by a falling tree. Requesting air ambulance to Forest Road 1 at (Lat./Long.) This will be the Trout Meadow Medical, IC is TFLD Jones. EMT Smith is providing medical care."*

Severity of Emergency / Transport Priority	<input type="checkbox"/> <b>RED / PRIORITY 1 Life or limb threatening injury or illness. Evacuation need is IMMEDIATE</b> <i>Ex: Unconscious, difficulty breathing, bleeding severely, 2° – 3° burns more than 4 palm sizes, heat stroke, disoriented.</i> <input type="checkbox"/> <b>YELLOW / PRIORITY 2 Serious Injury or illness. Evacuation may be DELAYED if necessary.</b> <i>Ex: Significant trauma, unable to walk, 2° – 3° burns not more than 1-3 palm sizes.</i> <input type="checkbox"/> <b>GREEN / PRIORITY 3 Minor Injury or illness. Non-Emergency transport</b> <i>Ex: Sprains, strains, minor heat-related illness.</i>	
Nature of Injury or Illness & Mechanism of Injury		<i>Brief Summary of Injury or Illness (Ex: Unconscious, Struck by Falling Tree)</i>
Evacuation Request		<i>Air Ambulance / Short Haul/Hoist Ground Ambulance / Other</i>
Patient Location		<i>Descriptive Location &amp; Lat. / Long. (WGS84)</i>
Incident Name		<i>Geographic Name + Medical (Ex: Trout Meadow Medical)</i>
On-Scene Incident Commander		<i>Name of on-scene IC of Incident within an Incident (Ex: TFLD Jones)</i>
Patient Care		<i>Name of Care Provider (Ex: EMT Smith)</i>

**3. INITIAL PATIENT ASSESSMENT:** Complete this section for each patient as applicable (start with the most severe patient)

Patient Assessment: See IRPG PAGE 106

Treatment:

**4. EVACUATION PLAN:**

Evacuation Location (if different): (Descriptive Location (drop point, intersection, etc.) or Lat. / Long.) Patient's ETA to Evacuation Location:

Helispot / Extraction Site Size and Hazards:

**5. ADDITIONAL RESOURCES / EQUIPMENT NEEDS:**

*Example: Paramedic/EMT, crews, immobilization devices, AED, oxygen, trauma bag, IV/fluid(s), splints, rope rescue, wheeled litter, HAZMAT, extrication*

**6. COMMUNICATIONS: Identify State Air/Ground EMS Frequencies and Hospital Contacts as applicable**

Function	Channel Name/Number	Receive (RX)	Tone/NAC *	Transmit (TX)	Tone/NAC *
COMMAND					
AIR-TO-GRND					
TACTICAL					

**7. CONTINGENCY: Considerations:** If primary options fail, what actions can be implemented in conjunction with primary evacuation method? Be thinking ahead..

**8. ADDITIONAL INFORMATION:** Updates/Changes, etc.

**REMEMBER:** Confirm ETAs of resources ordered. Act according to your level of training. Be Alert. Keep Calm. Think Clearly. Act Decisively.