

FINANCE MESSAGE

Finance Email: 2023.smithrivercomplex.finance@firenet.gov

Finance Phones: Contractors: 971-245-0259 Agency Personnel: 971-762-8750

Please email your time to the Finance email address daily *with the word "NORTH" in the subject line.*

See Finance if you have not closed out your time for Large Fire Support

Finance documents required upon check in are:

Required Documents

Overhead, Agency Crews & Cooperators	Contract Resources
Check-in docs needed: Resource Order, Manifest, Cooperative Agreement, Casual Hire Form w/ECI# (as applicable)	Check-in docs needed: Resource Order, Manifest, Full Contract/Agreement, Certifications (<i>if required</i>) Pre-Inspection
Daily: CTRs, Shift Tickets	Daily: CTRs, Shift Tickets, receipts (claims, etc.)
Demob: Signed OF-288; Signed OF-286	Demob: Contractor Evaluations, Shift Tickets, receipt(s) for Addition/Deductions, Post-Inspection, Signed OF-286

Additional Incident Information (to be added to your Shift Ticket or CTR)

Incident Name: Smith River Complex North

Incident Number: CA-SRF-000968

Financial codes:

DOI – QJ6L

Washington DNR 221-ICM

USDA – P5QJ6L (0510)

DEMOB

Fliers complete the "Air Travel Request" QR code below, 72 hours prior to flight date.

- Return supplies to the Cache
- Return radios, antennas, etc., to Communications
- Contact Finance about closing out your paperwork
- If you are a Trainee contact the Training Specialist, stop by or call 360-701-3154

Once the above items have been completed, SCAN the DEMOB QR code and complete the questions.



Air Travel



DEMOB

Call Demob at 971-713-0265 to confirm the information has been received.

CHECK-IN

Please complete the virtual check-in process via the link below. If you have any questions, please email check-in at 2023.smithrivercomplex.checkin@firenet.gov. Please put NORTH in the subject line when emailing check-in.


You are not checked in until you provide the following:

- Red Cards
- Roster/Manifest



Process for crew/operator personnel swaps:

Contact Check-In at 208-891-6877 or stop by Lake Selmac ICP and provide the necessary information on personnel changes 48 hours prior to swapping crew members/operators.

INCIDENT OBJECTIVES	1. Incident Name Smith River Complex North	2. Date August 23, 2023	3. Time 2000
4. Operational Period: 08/24-25/2023 0600-0600			
5. General Objectives: Implement a FULL suppression strategy for the Smith River Complex: <ul style="list-style-type: none"> • Provide for firefighter and public safety through hazard recognition and application of the risk management process. • Coordinate public information to provide timely and continuous updates to affected agency partners, cooperators, and the public. • Coordinate suppression activities with READs to minimize impacts on natural and cultural resources. • Effectively manage and track costs for all incidents identified within the Smith River Complex. • Close coordination with Regions 5 and 6 fire leadership to ensure effective and efficient management of firefighting resources. • Smith River Complex has two IMTS managing the incident with CA-15 to the south and PNW-13 to the north. • Effectively manage and track costs for all incidents identified within the Smith River Complex. Smith River Complex North (PNW-13): <ul style="list-style-type: none"> • Protect and minimize the impact to the communities of Elk creek, Illinois valley, Dwight creek, Takelma, and Sun star. • Evaluate control features, develop structure protection group. • Work with Josephine and Curry Counties in Oregon, as well as Del Norte County in California for evacuation levels and future recommendations. • Develop a PACE model, in coordination with CA-15. Smith River Complex South (CA-15): <ul style="list-style-type: none"> • Minimize impact to the communities and outlying areas near Gasquet, Pioneer, Lower Jones Creek, Washington Flat, Siskiyou Fork, French Hill, Coon Creek, Rock Creek, and Crescent City, as well as water resources, transportation routes, electrical infrastructure, and natural and cultural resources. • East of the Six Rivers National Forest boundary • West of the Six Rivers and Klamath National Forest boundary • North of the 15N01 forest road • South of the Rouge Siskiyou National Forest Boundary 			
5a. Incident Requirements <ul style="list-style-type: none"> • Provide Agency Administrator updates and briefings on incident status as conditions evolve. • The Smith River Complex is being managed with a full suppression strategy. • Personnel on the incident will implement a risk-based decision-making process, with shared AA alignment. • Firefighting operations will implement tactics that offer the highest probability of success to achieve the strategy of suppressing the fire, preventing unnecessary exposure to ground personal, suppression related damage, and protecting values at risk. • Values include the safety of the public, and firefighters; including private and tribally held timberlands. 			
5b. Leaders Intent <ul style="list-style-type: none"> • Safety: Firefighter, public, and aviation safety will be addressed through hazard/exposure risk mitigation processes. • Risk Management: Utilize an aligned risk assessment process which mitigates exposure to firefighters through evaluation of conditions during the duration of the incident. • Communication: Keep Agency Administrators and firefighters informed of strategic actions, accomplishments, and challenges. • Operations: Make informed strategic/tactical decisions suppressing the fire in the right geographic locations with the appropriate resources having the highest probability of success. • Stakeholders: Collaborate with local partners, officials, and landowners to provide situational updates pertinent to the fire. • Logistics: Provide support ensuring food, water, and shelter for incident responders. • Human Resources: Ensure that all incident personnel are treated with dignity and respect, while having zero tolerance for harassment, alcohol, or illegal drug use. • Public Information: Provide timely and accurate information through media outlets, trap lines, briefings, community meetings, and social platforms. • Finance: Monitor and communicate incident cost associated with meeting incident objectives. • Planning: Provide incident documentation, resource tracking, and accurate data management. 			
6. Weather Forecast & General Safety Message for Period – See Attached			
7. Attachments (mark if attached)			
<input checked="" type="checkbox"/> Organization List - ICS 203	<input checked="" type="checkbox"/> Weather Forecast	<input checked="" type="checkbox"/> Safety Message	
<input checked="" type="checkbox"/> Div. Assignment Lists - ICS204	<input checked="" type="checkbox"/> Fire Behavior Forecast	<input type="checkbox"/> Medical Emergency Com Plan	
<input checked="" type="checkbox"/> Communications Plan - ICS 205	<input checked="" type="checkbox"/> Incident Map	<input type="checkbox"/>	
<input checked="" type="checkbox"/> Medical Plan - ICS 206	<input checked="" type="checkbox"/> Air Operations - ICS 220	<input type="checkbox"/>	
9. Prepared by Aileen Nichols		9. Approved by (Incident Commander) Eric Riener 	

ORGANIZATION ASSIGNMENT LIST	
1. Incident Name Smith River Complex North	
2. Date August 24, 2023	3. Time 1830
4. Operational Period August 25-26, 2023 0600-0600	
Position	Name
NWIMT 13 LWD 9/02/2023	
5. Incident Commander and Staff	
Incident Commander	Eric Riener
Deputy Incident Commander	Brian Gales
Liaison Officer	Larry Nickey
Safety Officer	Ray Hershey
Information Officer	Randall Rische
Information Officer Deputy	Eric Waters
Human Resource Specialist	Margaret Dietrich
6. Agency/Organization Representative(s):	
USFS RSF Agency Administrator	Al Watson
USFS RSF River Agency Representative	Scott Blower
USFS RSF Fire Management Liaison	Mike McCann
BLM Agency Administrator	Steven Lydick
BLM Agency Administrator - t	Heidi Lowery
BLM Agency Representative	Chris Foster
Oregon Department of Forestry	Ryan Gorden
Lead READ	Rachel Showalter
7. Planning Section	
Plans Chief	Aileen Nichols
Resources Unit	Meredith Butcher
Resources Unit - t	Carolyn Zanofto
Status Check-In	Sandy Hoffman
Status Check-In/Documentation Unit - t	Robert Wandel
Demob Unit	Laura Backlund
Situation Unit - t	Laurie Bergvall
Fire Behavior Analyst	Dean Warner
Incident Meteorologist	Jonathan Chriest
GIS Specialist	Kayla Fermin
GIS Specialist - t	David Hines
Computer Specialist	Dave Johnson
Computer Specialist	Jeff Hixon
Computer Specialist - t	Zak Thomas
Strategic Operational Planner - t	Scott Brewer
8. Logistics Section	
Logistics Chief	Bryan Swanberg
Logistics Chief - t	Cindy Preston
Deputy Logistics Chief	Jim Hammer
Deputy Logistics Chief	Peter Fitzmaurice
Supply Unit Leader - t	Jon Byerly
Ordering Manager	Rob Jeter
Ordering Manager - t	Robert Yarnall
Communications Unit Ldr - t	Bruce Hanna
Incident Comm Mgr	Alandra Swords
Com Tech	Kevin Alexander
Food Unit Leader	Pat Young
Facilities Unit Leader	Keith Yonaka
Facilities Unit Leader	Shannon Anderson
Medical Unit Leader	Ben Meacham

Medical Unit Leader	James Brown	
Ground Support Unit	Dave Hesburn	
Ground Support Unit	Billie Hunter	
Receiving/Distribution Mgr - t	Aaron Ritter	
Base Camp Manager - t	Justin Schmal	
9. Operations Section		
Operations (Field)	John Spencer Jesse Stone - t	
Operations (Planning/ Strategic)	Shawn Jaca	
Operations (Planning)	Tim Crawley-Murphey - t	
Operations (Night)	Larry Pingle	
a. North		
Branch Director		
Division Supervisor	H	Anna Graves Jothan McGaughey - t
Division Supervisor	I	Whitney Machado Silas Baffa - t
Division Supervisor	K	Derrick Youngerman
Group Supervisor	Structure West	Robert Boles Shannon Clark - t
Group Supervisor	Structure East	Miranda Stuart Billy Turner - t
Group Supervisor	Contingency West	Derreck Johnson
Group Supervisor	Contingency East	Randy Anderson Mark Johnson - t
Manager	Staging	Rick Long
b.		
Branch Director		
Division Supervisor		
Division Supervisor		
c. Air Operations Branch		
Air Operations	Steve Markason	
Air Support Group	Jim Dotson	
Air Support Group - t	Bert Smith - t	
10. Finance Section		
Finance Chief	Veronika Klukas	
Finance Chief - t	Lori Price	
Cost Unit	Paula James	
Time Unit	Angie Chapman	
Time Unit - t	Heather Fitzpatrick	
Proc Unit Leader	Laurette Gaylord	
Proc Unit Leader - t	Eric Soto	
COMPS/CLAIMS	Hanna Jeter	
Incident Cont. Project Insp	Stan Zazado	
PTRC/In-Box Manager - t	Ryker Aldred	
PREPARED BY: Meredith Butcher		



Fire Weather Forecast



FORECAST NO: 3
PREDICTION FOR: Friday-Saturday
DATE: August 25, 2023
FORECAST ISSUED: 1800 August 24, 2023

FIRE: Smith River Complex North
UNIT: CA-SRF-968
IMET: Jonathan Christ (425-765-3749)
SIGNED: *Jonathan Christ*

WEATHER DISCUSSION: Valley elevations = 1400 ft (Illinois Valley), Ridgetop elevations = 3300 ft (Monkey Ridge)
 An upper level trough will move south off the coast of California, bringing southwest flow aloft and moderated temperatures and relative humidities on Friday. Along with this will come a more diurnal wind pattern with west winds each afternoon. West winds will bring heavy smoke and low visibility over the fire area and the Illinois Valley. Expect visibility as low as one half mile through Saturday. Thunderstorms or precipitation are not expected. Saturday will see a slight warming and drying trend.

TODAY:

WEATHER: Mostly clear. Very smoky with low visibility.

MAX TEMP: Valleys: 82-87°F (7-9°F ↓)
 Ridgetops: 77-81°F (4-6°F ↓)

MIN RH: Valleys: 36-43% (7-10% ↑)
 Ridgetops: 41-47% (7-10% ↑)

CHC WTG RAIN: 0% **LAL:** 1

SFC VIS: 0.5-1 mile.

WINDS: Valleys: Morning: downslope 2-4 mph, afternoon: west 5-10 mph, gusts to 15 mph in aligned valleys.
(20 feet) Ridgetops: Morning: southwest 3-5 mph, afternoon: west 5-9 mph gusts to 15 mph.

MIXING HEIGHT: Rising to 7,000 ft by 1300.

TRANSPORT WIND: Southwest 7-10 mph.

TONIGHT:

WEATHER: Mostly clear. Very smoky with low visibility, improving slightly by the early morning.

MIN TEMP: Valleys: 48-52° (1-2°F ↓)
 Ridgetops: 55-58° (1-2°F ↓)

MAX RH: Valleys: 69-79% (3-5% ↑)
 Ridgetops: 55-60% (Little change)

CHC WTG RAIN: 0% **LAL:** 1

SFC VIS: 0.5-1 mile, becoming 1-2 miles by 0500.

WINDS: Valleys: Downslope 2-4 mph.
(20 FEET) Ridgetops: Light and variable, becoming NE 3-5 mph around 0300.

MIXING HEIGHT: Dropping to 1,000 ft by 2200.

TRANSPORT WIND: Northeast 3-6 mph.

SATURDAY:

WEATHER: Clear. Periods of heavy smoke.

MAX TEMP: Valleys: 83-88°F (1-2°F ↑)
 Ridgetops: 79-83°F (1-2°F ↑)

MIN RH: Valleys: 33-39% (3-5% ↓)
 Ridgetops: 35-42% (5-7% ↓)

CHC WTG RAIN: 0% **LAL:** 1

SFC VIS: 0.5-1 mile.

WINDS: Valleys: Morning: downslope 2-4 mph, afternoon: southwest 3-7 mph, becoming W 6-8 mph after 1500.
(20 feet) Ridgetops: Morning: southwest 2-5 mph, afternoon: west 5-8 mph gusts to 15 mph.

MIXING HEIGHT: Rising to 7,000 ft by 1300.

TRANSPORT WIND: Southwest 8-10 mph.

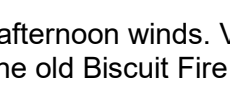
EXTENDED OUTLOOK: A low aloft off the coast will persist into early next week, bringing continued moderated conditions. West winds are expected each afternoon and evening, and with that, very low visibility and smoky conditions. A possible northeast wind event during the middle of next week is increasing in probability.

Nearby Weather Observations



Please send weather observations to Jonathan Christ (IMET) at jonathan.christ@noaa.gov or 425-765-3749

Fire Behavior Forecast #5

Incident: Smith River Cx North CA-SRF-000968	TYPE OF FIRE: Wildfire
DATE/TIME ISSUED: 8/24/23 1900	OPERATIONAL PERIOD: 8/25-26/23 All Shifts
FBAN: Dean Warner	Signed: 

Weather Summary - See Incident Weather Forecast:
Persistent dry and warm weather with morning east flow and afternoon west winds.

Fuels

Shrub: Shrubs and brush are 1 to 3 feet high with a low to moderate load of grass intermixed with sparse stems of conifer. Manzanita brush and other live fuels are drought stressed from below normal amounts of spring precipitation. These live fuels are cured enough to contribute to fire spread. Given the exposed nature of this fuel type, eye level winds in excess of 6 mph can cause rates of spread to exceed 8 chains per hour. Without wind these fuels will typically exhibit low rates of spread.

Timber litter and shrub: Primary carrier of the fire is understory brush with timber and leaf litter. Expect slow rates of spread under moderate weather conditions. Canopy closure shelters fuels from wind but fire spread will be slow and continuous. Eye level winds in excess of 6 mph will allow fire to reach the canopy, resulting in torching and possible crowning. The drought stressed vegetation and areas of abundant dead fuel loading will exasperate fuel spread.

OUTPUTS: Expected Fine Dead Fuel Moisture: 6% POI: 60%

Fire Behavior: Active Atmosphere: Stable Max. spot distance: ¼ mile LAL: 1 ERC: 62 = 92 percentile Camp Lookout RAWS	Fuel/Type Model	Maximum Rate of Spread	Maximum Flame Length
	Shrub	6 ch/hr	2 ft.
	Timber litter shrub	4 ch/hr	1 ft.

Expected Fire Behavior is Based on the Warmest, Driest, Windiest Conditions Forecasted.

General/Potential: Good overnight RH recovery should narrow the burn window today. Fuels will remain dry and afternoon winds will continue to be unfavorable for our operational effort. East to west flowing drainages will provide the best alignment for afternoon west winds. Areas of sparse fuel arrangement may impede fire spread if winds are light or fuels are sheltered from the wind.

Hotel: The ridgetop location in this division will best align with the afternoon winds. Very little topographic sheltering will protect the fuels. Expect a strong fire advance into the old Biscuit Fire scar, beyond the 112 road and also into Whiskey Creek.

India: Fire is firmly entrenched in the West Fork of the Illinois River. Expect the fire to advance north while making uphill runs to Oregon Mountain and to the west on the ridge line separating Blue Creek. Although the fuels may look sparse they will carry the fire with very little wind.

Kilo: Fire is not expected to get east of Highway 199, north of the Collier Tunnel. South of the Tunnel, watch for fire to establish in the Siskiyou and Middle Forks of the Smith River, the riparian influenced areas offer abundant fuels for fire to progress up drainage to the east.

Night Operations: Around night fall, winds will shift to an east flow providing favorable conditions for operational efforts.

Air Operations

Expect smoke impacts to aviation assets throughout the day.

Safety - Wildland Urban Interface Hazards

If you are fighting fire in the wildland urban interface, you may encounter hazards other than the fire itself such as hazardous materials, utility lines, poor access, and even difficult people. Be prepared to mitigate any and all hazards before engaging the fire.

DIVISION ASSIGNMENT LIST			1. Branch		2. Division H	
3. Incident Name Smith River Complex North			4. Operational Period Date: 08/25/2023 Time: 0600-2200			
5. Operations Personnel						
Operations Chief		John Spencer Jesse Stone - t		Division Supervisor		Anna Graves Jothan McGaughey - t
Safety Officer		Ray Hershey		Air Attack		
6. Resources Assigned this Period						
	Strike Team/Task Force/Resource Designator	Leader	# Persons	LWD	Drop Off PT./Time	Pick Up PT./Time
1	**E-50061 ENG6 3Bs	Jonathan Toebben	3	8/31	Lake Selmac ICP	Lake Selmac ICP
2	**E-50062 ENG6 Lone Pine	Katy Adams	3	8/31	Lake Selmac ICP	Lake Selmac ICP
3						
4	E-50040 CHP2 Prometheus	Steven Carrick	3	9/5	Lake Selmac ICP	Lake Selmac ICP
5						
6						
7						
8						
9						
10						
11						
12						
13						
14						
15						
16	Pacific Power Task Force	Anna Arritola	5		No meals	
17						
18						
19	O-68 Medic 2	Erica Jackson	1		Lake Selmac ICP	Lake Selmac ICP
20	O-50032 EMT1	Lisa Johnson	1		Lake Selmac ICP	Lake Selmac ICP
21						
22						
		Meal count	16			
7. Control Operations: Task: Continue prep on the 4402 Rd. Hold fire west of 4402 Rd. Purpose: Minimize impacts to communities and infrastructure to the north and east. End state: Impacts have been minimized to communities and infrastructure to the north and east.						
8. Special Instructions: **Indicates IA Resources. REAFs Bucher, Mero and Reha will contact DIVS upon entering and exiting their respective divisions.						
9. Division/Group Communication Summary						
See Communications Plan						
Prepared by (Resource Unit Ldr) <i>Meredith Butcher/Carolyn Zanotto</i>		Approved by (Planning Sect. Ch.) <i>Aileen Nichols</i>		Date 08/24/2023	Time 2000	

DIVISION ASSIGNMENT LIST				1. Branch		2. Division I	
3. Incident Name Smith River Complex North				4. Operational Period Date: 08/25/2023 Time: 0600-2200			
5. Operations Personnel							
Operations Chief		John Spencer Jesse Stone - t		Division Supervisor		Whitney Machado Silas Baffa - t	
Safety Officer		Ray Hershey		Air Attack			
6. Resources Assigned this Period							
Strike Team/Task Force/Resource Designator		Leader	# Persons	LWD	Drop Off PT./Time	Pick Up PT./Time	
1	O-50015 TFLD	Jyota Smith-Howard	1	9/3	Lake Selmac ICP	Lake Selmac ICP	
2	O-50014 HEQB	Clint Foster	1	9/3	Lake Selmac ICP	Lake Selmac ICP	
3	O-50045 FMOD Toms Timber LLC	Tyler Pacheco	2	9/2	Lake Selmac ICP	Lake Selmac ICP	
4	O-50044 FMOD Cut Rite Inc	Dave Hillsman	2	9/4	Lake Selmac ICP	Lake Selmac ICP	
5	O-50075 FMOD Cut Rite Inc	Scott Opheim	2	9/5	Lake Selmac ICP	Lake Selmac ICP	
6	C-50017 CR2I Redmond IHC	Dave Varon	22	8/31	Lake Selmac ICP	Lake Selmac ICP	
7	C-50016 CRW1 Palomar IHC	Jose Ortega	23	8/29	Lake Selmac ICP	Lake Selmac ICP	
8	C-50004 CRW2 Pacific Coast	Javier Ramos	20	9/4	Lake Selmac ICP	Lake Selmac ICP	
9	C-50006 CRW2 Pacific Oasis	Jonathan Culp	20	9/7	Lake Selmac ICP	Lake Selmac ICP	
10	C-50022 CRW2 Tom Fery Farm	R. Hoffman-Wenting	20	9/7	Lake Selmac ICP	Lake Selmac ICP	
11	**C-50013 CR2I Pacific Oasis 14A	Jason Maza	20	8/31	Lake Selmac ICP	Lake Selmac ICP	
12	**E-50065 ENG6 GE Forestry 1	Edgar Aguilar	3	8/31	Lake Selmac ICP	Lake Selmac ICP	
13	**E-50057 ENG6 Fuego 6	Chase Workman	3	9/1	Lake Selmac ICP	Lake Selmac ICP	
14	E-50058 ENG6 Lomakatsi 65	Antonio Lopez	3	8/31	Lake Selmac ICP	Lake Selmac ICP	
15	E-50059 ENG6 Green Mtn 88	Scott Brennan	3	8/31	Lake Selmac ICP	Lake Selmac ICP	
16	E-50060 ENG6 Sundance 5	Emilio Garcia	3	8/31	Lake Selmac ICP	Lake Selmac ICP	
17	**E-39 WTS2 Sugden 1	Tom Sugden	1	8/31	Lake Selmac ICP	Lake Selmac ICP	
18	E-50056 WTS2 Autobrot 1	Dakota Williams	2	8/31	Lake Selmac ICP	Lake Selmac ICP	
19	E-40003 DZR2 Ace Earth Moving	Wade Comyford	2	9/4	Lake Selmac ICP	Lake Selmac ICP	
20	E-40002 DZR2 Table Mtn. Forestry	Mitchell West	2	9/4	Lake Selmac ICP	Lake Selmac ICP	
21	E-40001 MBM2 Morris Forestry LLC	Todd Donahue	2	9/3	Lake Selmac ICP	Lake Selmac ICP	
22	*O-50015 REMS 1	Dan Blaul	4	9/5	Lake Selmac ICP	Lake Selmac ICP	
23	O-50029 Medic 4	Chad Payletz	1	9/5	Lake Selmac ICP	Lake Selmac ICP	
24	O-50022 EMT 4	Jonathon Cahill	1	9/5	Lake Selmac ICP	Lake Selmac ICP	
25	O-50024 EMT 5	Johnna Hyde	1	9/5	Lake Selmac ICP	Lake Selmac ICP	
26	E-50031 AMBO 1	Mike Wertz	2	9/5	Lake Selmac ICP	Lake Selmac ICP	
		Meal count	166				
7. Control Operations: Task: Establish fireline from 4402 to Hwy 199. Purpose: Keep fire south of fireline. End state: Impacts have been minimized to communities and infrastructure.							
8. Special Instructions: *REMS 1 staged at DP31. **Indicates IA Resources. REAFs Porter and Hughes will contact DIVS upon entering and exiting their respective divisions.							
9. Division/Group Communication Summary							
See Communications Plan							
Prepared by (Resource Unit Ldr) <i>Meredith Butcher/Carolyn Zanotto</i>			Approved by (Planning Sect. Ch.) <i>Aileen Nichols</i>			Date 08/24/2023	Time 2000

DIVISION ASSIGNMENT LIST				1. Branch	2. Division K	
3. Incident Name Smith River Complex North				4. Operational Period Date: 08/25/2023 Time: 0600-2200		
5. Operations Personnel						
Operations Chief		John Spencer Jesse Stone - t		Division Supervisor		Derrick Youngerman
Safety Officer		Ray Hershey		Air Attack		
6. Resources Assigned this Period						
Strike Team/Task Force/Resource Designator		Leader	# Persons	LWD	Drop Off PT./Time	Pick Up PT./Time
1	O-50140 TFLD	Russ Macal	1	9/7	Lake Selmac ICP	Lake Selmac ICP
2						
3	O-50076 FMOD Summers Timber	Jarret Wilsey	3	9/6	Lake Selmac ICP	Lake Selmac ICP
4	O-50096 FMOD C&K Wildland Fire	T.D. Woodruff	2	9/6	Lake Selmac ICP	Lake Selmac ICP
5	O-50097 FMOD A&C Cutting	Bill Smith	2	9/6	Lake Selmac ICP	Lake Selmac ICP
6	O-60007 FMOD Top Notch	Steve Hayter	2	9/5	Lake Selmac ICP	Lake Selmac ICP
7	O-60008 FMOD C&K Wildland Fire	Cameron Hartness	2	9/5	Lake Selmac ICP	Lake Selmac ICP
8	O-50098 FMOD Top Notch	Kyle Armijo	2	9/7	Lake Selmac ICP	Lake Selmac ICP
9	E-50046 ENG3 Grande Ronde Tribes	Brett Daniels	5	9/5	Lake Selmac ICP	Lake Selmac ICP
10	E-50050 ENG3 TMFR Brush	Scott Fenley	4	9/5	Lake Selmac ICP	Lake Selmac ICP
11	E-50043 ENG6 B&B	Tim Bailey	3	9/5	Lake Selmac ICP	Lake Selmac ICP
12						
13	E-50037 WTS2 Lavenbarg	John Dalton	1	9/5	Lake Selmac ICP	Lake Selmac ICP
14	E-50039 DZR2 Barry Brown	Ed Machuse	3	9/5	Lake Selmac ICP	Lake Selmac ICP
15	E-50038 DZR2 Backwoods Equip	Jimm Hill	2	9/5	Lake Selmac ICP	Lake Selmac ICP
16	E-40000 MBM2 Lone Star Ent.	Mike Bunker	2	9/5	Lake Selmac ICP	Lake Selmac ICP
17	E-50083 FEL1 Ponsse Miller Timber	Scott McElhaney	2	9/7	Lake Selmac ICP	Lake Selmac ICP
18						
19	O-50013 Medic 1	Joel Bower	1	9/5	Lake Selmac ICP	Lake Selmac ICP
20	O-50029 Medic 3	Stephan Smith	1	9/5	Lake Selmac ICP	Lake Selmac ICP
21	O-50025 EMT 2	James Henson	1	9/5	Lake Selmac ICP	Lake Selmac ICP
22	O-50123 REMS 2	Brady Graham	2		Lake Selmac ICP	Lake Selmac ICP
23	AMBO					
		Meal count	41			
7. Control Operations: Task: Construct fireline from Hwy 199 east along 18N11 Rd to 444 Rd. Scout and prep existing dozer line to the west of 18N11 Rd to Oregon Mtn Rd. Purpose: Keep fire south of the 18N11 Rd and east of Hwy 199. End state: Impacts have been minimized to communities and critical infrastructure to the north.						
8. Special Instructions: REAFs Saunders and Galuchie will contact DIVS upon entering and exiting their respective divisions.						
9. Division/Group Communication Summary See Communications Plan						
Prepared by (Resource Unit Ldr) <i>Meredith Butcher/Carolyn Zanotto</i>			Approved by (Planning Sect. Ch.) <i>Aileen Nichols</i>		Date 08/24/2023	Time 2000

DIVISION ASSIGNMENT LIST				1. Branch		2. Group Structure West	
3. Incident Name Smith River Complex North				4. Operational Period Date: 08/25/2023 Time: 0600-2200			
5. Operations Personnel							
Operations Chief		John Spencer Jesse Stone - t		Group Supervisor		Robert Boles Shannon Clark - t	
Safety Officer		Ray Hershey		Air Attack			
6. Resources Assigned this Period							
Strike Team/Task Force/Resource Designator		Leader	# Persons	LWD	Drop Off PT./Time		Pick Up PT./Time
1	C-50002 CRW2 Lomakatsi	Braulio Maya	20	9/1	Lake Selmac ICP		Lake Selmac ICP
2	O-50070 STEN	Rich McIntyre	1	9/5	Lake Selmac ICP		Lake Selmac ICP
3							
4	E-50042 ENG3 J3 Contracting	Chris Escudero	3	9/5	Lake Selmac ICP		Lake Selmac ICP
5	E-50049 ENG6 Sundance Fire	Dean Norton	3	9/5	Lake Selmac ICP		Lake Selmac ICP
6							
7	E-50005 WTS2 Rouge Basin Fire	Matthew Jordan	1	9/5	Lake Selmac ICP		Lake Selmac ICP
8	E-50036 WTS2 Lavenbarg	Dan Lavenbarg	1	9/5	Lake Selmac ICP		Lake Selmac ICP
9	E-50035 WTS2 Double R&C	Tate Harron	1	9/5	Lake Selmac ICP		Lake Selmac ICP
10	E-50039 DZR2 Barry Brown	Ed Machuse	1	9/5	Lake Selmac ICP		Lake Selmac ICP
11							
12	L/L Task Force South						
13	E-256 ENG5	Brandon McCoy	3	9/4	Lake Selmac ICP		Lake Selmac ICP
14	E-253 ENG6	Rick Sisson	3	9/4	Lake Selmac ICP		Lake Selmac ICP
15	E-139 ENG6	David Melendez	3	9/4	Lake Selmac ICP		Lake Selmac ICP
16	E-255 ENG5	Nick Miller	3	9/4	Lake Selmac ICP		Lake Selmac ICP
17	E-252 ENG5	Brook Hogrefe	3	9/4	Lake Selmac ICP		Lake Selmac ICP
18							
19							
20	OSFM Task Force 35	Mike Berger	13	8/26	Lake Selmac ICP		Lake Selmac ICP
21							
22	O-50023 EMT 3	Trevor Brant	1	9/5	Lake Selmac ICP		Lake Selmac ICP
23							
		Meal count	60				
7. Control Operations: Task: Assess and prep west of Hwy 199 corridor and Lone Pine Rd in Div H and I. Purpose: Minimize fire impacts to private residences in the fire area. End state: Area to be protected is prepped and secured.							
8. Special Instructions:							
9. Division/Group Communication Summary							
See Communications Plan							
Prepared by (Resource Unit Ldr) <i>Meredith Butcher/Carolyn Zanotto</i>				Approved by (Planning Sect. Ch.) <i>Aileen Nichols</i>		Date 08/24/2023	Time 2000

DIVISION ASSIGNMENT LIST				1. Branch		2. Group Structure East	
3. Incident Name Smith River Complex North				4. Operational Period Date: 08/25/2023 Time: 0600-2200			
5. Operations Personnel							
Operations Chief		John Spencer Jesse Stone - t		Group Supervisor		Miranda Stuart Billy Turner - t	
Safety Officer		Ray Hershey		Air Attack			
6. Resources Assigned this Period							
Strike Team/Task Force/Resource Designator		Leader	# Persons	LWD	Drop Off PT./Time		Pick Up PT./Time
1	C-50005 CRW2 Lava River	Roberto Ceja	20	9/7	Lake Selmac ICP		Lake Selmac ICP
2							
3	E-50041 ENG3 Allied Water Service	Matthew	3	9/5	Lake Selmac ICP		Lake Selmac ICP
4	E-50094 ENG3 Grayback Forestry	Stephen Jones	3	9/6	Lake Selmac ICP		Lake Selmac ICP
5	E-50045 ENG6 Grande Ronde Tribe	Waylon Rich	3	9/5	Lake Selmac ICP		Lake Selmac ICP
6	E-50051 ENG6 Woodland Hills FD	Lance Wollebaek	3	9/5	Lake Selmac ICP		Lake Selmac ICP
7							
8							
9	TASK FORCE 1*						
10	E-408 ENG4	Mike Misek	3	8/29	Lake Selmac ICP		Lake Selmac ICP
11	E-403 ENG6	David Bryant	3	8/26	Lake Selmac ICP		Lake Selmac ICP
12	E-4000 WTS2 Darrah Logging 4	Bob Cretton	1	8/30	Lake Selmac ICP		Lake Selmac ICP
13							
14							
15							
16							
17							
18							
19							
20							
21	O-50027 Medic 6	Alex Vera	1	9/5	Lake Selmac ICP		Lake Selmac ICP
22							
		Meal count	40				
7. Control Operations: Task: Assess and prep east of the Hwy 199 corridor and structures in Div K. Purpose: Minimize fire impacts to private residences in the fire area. End state: Area to be protected is prepped and secured.							
8. Special Instructions:							
9. Division/Group Communication Summary See Communications Plan							
Prepared by (Resource Unit Ldr) <i>Meredith Butcher/Carolyn Zannotto</i>			Approved by (Planning Sect. Ch.) <i>Aileen Nichols</i>			Date 08/24/2023	Time 2000

DIVISION ASSIGNMENT LIST				1. Branch		2. Group Contingency West	
3. Incident Name Smith River Complex North				4. Operational Period Date: 08/25/2023 Time: 0600-2200			
5. Operations Personnel							
Operations Chief		John Spencer Jesse Stone - t		Group Supervisor		Derreck Johnson	
Safety Officer		Ray Hershey		Air Attack			
6. Resources Assigned this Period							
Strike Team/Task Force/Resource Designator		Leader	# Persons	LWD	Drop Off PT./Time		Pick Up PT./Time
1	O-60001TFLD	Tarilton Beall	1	9/5	Lake Selmac ICP		Lake Selmac ICP
2	O-60002 TFLD	Doug Thackery	1	9/5	Lake Selmac ICP		Lake Selmac ICP
3	O-60003 HEQB	Hunter Stratton	1	9/5	Lake Selmac ICP		Lake Selmac ICP
4	O-60004 HEQB	Travis Wyndearo	1	9/5	Lake Selmac ICP		Lake Selmac ICP
5	O-60005 HEQB	Ivan Carrier	1	9/5	Lake Selmac ICP		Lake Selmac ICP
6	O-60006 HEQB – t	George Sheppard	1	9/5	Lake Selmac ICP		Lake Selmac ICP
7	O-60009 SFAL Crow Cutting		1	9/5	Lake Selmac ICP		Lake Selmac ICP
8	O-60010 FMOD Arrows Timber & Fire		2	9/5	Lake Selmac ICP		Lake Selmac ICP
9							
10	C-60000 CRW2 Grayback Forestry	Dan Siller	20	9/7	Lake Selmac ICP		Lake Selmac ICP
11							
12	E-60000 MBM2 Parker Excavation	Malachi Parker	2	9/5	Lake Selmac ICP		Lake Selmac ICP
13	E-60001 MBM2 Parker Excavation		2	9/5	Lake Selmac ICP		Lake Selmac ICP
14	E-60002 DZR1 Hyde Trucking	Luke Hyde	2	9/5	Lake Selmac ICP		Lake Selmac ICP
15	E-60003 DZR1 Ira IV Excavating	Ed Podoll	2	9/5	Lake Selmac ICP		Lake Selmac ICP
16	E-60004 DZR1 Gregg Hyde Logging	Gregg Hyde	2	9/5	Lake Selmac ICP		Lake Selmac ICP
17	E-60010 DZR1 Pacific Ridgeline		2	9/5	Lake Selmac ICP		Lake Selmac ICP
18	E-60005 DZR3 Arrows Timber & Fire	Dan Syfert	2	9/5	Lake Selmac ICP		Lake Selmac ICP
19	E-60006 DZR3 Ira IV Excavating	Ed Podoll III	2	9/5	Lake Selmac ICP		Lake Selmac ICP
20							
21							
22							
		Meal count	45				
7. Control Operations: Task: Scout and establish control lines. Purpose: Keep fire south of control lines and west of 4402 Rd. End state: Minimize impacts to communities and infrastructure.							
8. Special Instructions: UTVs E-60007, E-60008, E-60009 Grayback Forestry.							
9. Division/Group Communication Summary							
See Communications Plan							
Prepared by (Resource Unit Ldr) <i>Meredith Butcher/Carolyn Zanotto</i>			Approved by (Planning Sect. Ch.) <i>Aileen Nichols</i>			Date 08/24/2023	Time 2000

DIVISION ASSIGNMENT LIST			1. Branch		2. Group Contingency East	
3. Incident Name Smith River Complex North			4. Operational Period Date: 08/25/2023 Time: 0600-2200			
5. Operations Personnel						
Operations Chief		John Spencer Jesse Stone - t		Group Supervisor		Randy Anderson Marc Johnson - t
Safety Officer		Ray Hershey		Air Attack		
6. Resources Assigned this Period						
Strike Team/Task Force/Resource Designator		Leader	# Persons	LWD	Drop Off PT./Time	Pick Up PT./Time
1						
2						
3						
4						
5						
6						
7						
8						
9						
10						
11						
12						
13						
14						
15						
16						
17						
18						
19						
20						
21						
22						
		Meal count				
7. Control Operations: Task: Scout for contingency line southeast of Hwy 199. Purpose: Validate alternate and contingency PACE lines. End state: PACE lines have been prepped to protect the communities to the north and northeast (Takilma and Sun Star).						
8. Special Instructions:						
9. Division/Group Communication Summary See Communications Plan						
Prepared by (Resource Unit Ldr) <i>Meredith Butcher/Carolyn Zanotto</i>			Approved by (Planning Sect. Ch.) <i>Aileen Nichols</i>		Date 08/24/2023	Time 2000

DIVISION ASSIGNMENT LIST			1. Branch		2. Division Staging	
3. Incident Name Smith River Complex North			4. Operational Period Date: 08/25/2023 Time: 0600-2200			
5. Operations Personnel						
Operations Chief		John Spencer Jesse Stone - t		Division Supervisor		
Safety Officer		Ray Hershey		Air Attack		
6. Resources Assigned this Period						
	Strike Team/Task Force/Resource Designator	Leader	# Persons	LWD	Drop Off PT./Time	Pick Up PT./Time
1	E-50113 WTS2 Hull Transportation	Brett Hull	1	9/6		
2						
3	E-50066 EXC2 DC Fire LLC	Dan Chancler	2	9/6		
4	E-50068 FEL1 Inland Timber Co	Shane Dougherty	2	9/6		
5	E-50069 FEL1 Nash Contracting	Travis Taruscio	2	9/6		
6	E-50034 MBM1 Upper Valley	James Kruckeberg	2	9/6		
7	E-50033 MBM1 Cate Land Inc.	E.C. Cates	2	9/7		
8						
9						
10						
11						
12						
13						
14						
15						
16						
17						
18						
19						
20						
21						
22						
		Meal count	11			
7. Control Operations: Task: Purpose: End state:						
8. Special Instructions:						
9. Division/Group Communication Summary See Communications Plan						
Prepared by (Resource Unit Ldr) <i>Meredith Butcher/Carolyn Zanotto</i>		Approved by (Planning Sect. Ch.) <i>Aileen Nichols</i>		Date 08/24/2023	Time 2000	

DIVISION ASSIGNMENT LIST			1. Branch		2. Division Night North	
3. Incident Name Smith River Complex North			4. Operational Period Date: 08/25/2023 – 8/26/2023 Time: 1800-0700			
5. Operations Personnel						
Operations Chief		Larry Pingle		Division Supervisor		
Safety Officer		Ray Hershey		Air Attack		
6. Resources Assigned this Period						
Strike Team/Task Force/Resource Designator		Leader	# Persons	LWD	Drop Off PT./Time	Pick Up PT./Time
1	OSFM Task Force 36	Zach Leigh	13	8/26		
2						
3						
4						
5						
6						
7						
8						
9						
10						
11						
12						
13						
14						
15						
16						
17						
18						
19						
20						
21						
22						
		Meal count	13			
7. Control Operations: Task: Structure protection. Purpose: Protect structures. End state: Impacts have been minimized to communities and infrastructure.						
8. Special Instructions:						
9. Division/Group Communication Summary						
See Communications Plan						
Prepared by (Resource Unit Ldr) <i>Meredith Butcher/Carolyn Zanotto</i>			Approved by (Planning Sect. Ch.) <i>Aileen Nichols</i>		Date 08/24/2023	Time 2000

INCIDENT RADIO COMMUNICATIONS PLAN (ICS 205)

Controlled Unclassified Information//Basic

1. Incident Name:		2. Date/Time Prepared:		3. Operational Period:						
SMITH RIVER COMPLEX NORTH		Date: 08/20/2023 Time: 19:20		Date/Time From: 08/25/2023 06:00 Date/Time To: 08/26/2023 0600						
4. Basic Radio Channel Use:										
Zone Group	Ch #	Function	Channel Name/Trunked Radio System Talkgroup	Assignment	RX Freq	RX Tone/NAC	TX Freq	TX Tone/NAC	Mode (A, D, or M)	Remarks
	1	TACTICAL	TAC 1	UNASSIGNED	168.0500	192.8	168.0500	192.8	A	UNASSIGNED
	2	TACTICAL	TAC 2	DIV I	168.2000	192.8	168.2000	192.8	A	
	3	TACTICAL	TAC 3	DIV K	168.6000	192.8	168.6000	192.8	A	
	4	TACTICAL	TAC 4	STRUCTURE	166.7250	192.8	166.7250	192.8	A	UNASSIGNED
	5	TACTICAL	TAC 5	DIV H	166.7750	192.8	166.7750	192.8	A	
	6	TACTICAL	TAC 6	UNASSIGNED	168.2500	192.8	168.2500	192.8	A	
	7	CMD	BOLAN ADM	ALL DIV	170.5000	67.0	162.6125	186.2	A	
	8	CMD	FIDDLER ADM	ALL DIV	170.5000	67.0	162.6125	179.9	A	
	9	TACTICAL	VTAC 11	STRUCTURE	151.1375	156.7	151.1375	156.7	A	STRUCTURE GROUP
	10	TACTICAL	ODF REDNET	IA	151.3400	156.7	151.3400	156.7	A	
	11	TACTICAL	NIFC T1	DIV D	168.0500	131.8	168.0500	131.8	A	
	12	TACTICAL	NIFC T4	DIV MM	166.7250	131.8	166.7250	131.8	A	
	13	AIR TO GROUND	A/G CMD	ALL DIVS	173.8500	000.0	173.8500	000.0	A	BRANCH AND DIVISION USE
	14	AIR TO GROUND	A/G TAC	ALL DIVS	169.4875	000.0	169.4875	000.0	A	AIR TO GROUND TACTICAL
	15	AIR MEDICAL	VMED 29	ALL DIVS	155.3475	156.7	155.3475	156.7	A	EMS AIR COORDINATION
	16	AIR TO GROUND	AIRGUARD	ALL DIVS	168.6250	000.0	168.6250	110.9	A	EMERGENCY AIRCRAFT CONTACT
5. Special Instructions:										
6. Prepared By COML						Name: Bruce Hanna		Signature: /s/ Bruce Hanna		
ICS 205						IAP Page		Date/Time: 8/24/2023 17:52		

INCIDENT RADIO COMMUNICATIONS PLAN (ICS 205)

Controlled Unclassified Information//Basic

1. Incident Name:		2. Date/Time Prepared:		3. Operational Period:							
SMITH RIVER COMPLEX NORTH INITIAL ATTACK ZONE		Date: 08/21/2023 Time: 20:00	Date/Time From: 08/25/23 06:00	Date/Time To: 08/26/23 06:00							
4. Basic Radio Channel Use:											
Zone Group	Ch #	Function	Channel Name/Trunked Radio System Talkgroup	Assignment	RX Freq	RX Tone/NAC	TX Freq	TX Tone/NAC	Mode (A, D, or M)	Remarks	
IA	1	CMD	MONKEY	IA	172.3750	000.0	164.1750	110.9	A	6 RIVERS MONKEY RIDGE	
IA	2	CMD	WILD RVR	IA	171.3875	67.0	164.9625	67.0	A	WILD RIVERS	
IA	3	CMD	GOLD BCH	IA	170.3750	67.0	164.1250	67.0	A	GOLD BEACH	
IA	4	CMD	ODF SEXTON	IA	151.1450	000.0	159.2850	179.9	A	ODF SEXTON	
IA	5	CMD	ODF GRAY BK	IA	151.1450	000.0	159.2850	151.4	A	ODF GREY BACK	
IA	6	TAC	ODF RED	IA	151.3400	000.0	151.3400	156.7	A	ODF RED	
IA	7	A/G	ODF WHITE	IA	151.3100	000.0	151.3100	156.7	A	ODF WHITE A/G	
IA	8	TAC	ODF RVT	IA	159.2400	000.0	159.2400	156.7	A	ODF RVT	
IA	9	A/G	FS A/G51	IA	168.3125	000.0	168.3125	000.0	A	A/G 51	
IA	10	A/G	FS A/G62	IA	169.3625	000.0	169.3625	000.0	A	A/G 62	
IA	11	CMD	BOLAN ADM	IA	170.5000	67.0	162.6125	186.2	A		
IA	12	CMD	FIDDLER ADM	IA	170.5000	67.0	162.6125	179.9	A		
IA	13	A/G	A/G CMD	IA	173.8500	000.0	173.8500	000.0	A		
IA	14	A/G	A/G TAC	IA	169.4875	000.0	169.4875	000.0	A		
IA	15	A/G	VMED 29	IA	155.3475	156.7	155.3475	156.7	A	EMS AIR COORDINATION	
IA	16	A/G	CAL CORD	IA	156.0750	156.7	156.0750	156.7	A	EMS AIR CORD	
5. Special Instructions:											
6. Prepared By				Name: Bruce Hanna				Signature: /s/ Bruce Hanna			
(Communications Unit Leader)											
ICS 205				IAP Page				Date/Time: 8/24/23 17:15			

ICS 205 - INCIDENT RADIO COMMUNICATIONS PLAN

CONTROLLED UNCLASSIFIED
INFORMATION//BASIC

1. Incident Name: SMITH RIVER COMPLEX - SOUTH Incident Channels		2. Date/Time Prepared Date: 08/24/2023 Time: 1930		3. Operational Period: Date From: 08/25/23 Time From: 0700 Date To: 08/26/23 Time To: 0700					
4. Communications									
Ch#	Function	Name	Assigned To	Rx Freq	Rx Tone	Tx Freq	Tx Tone	Mode	Notes
1	COMMAND	NIFC C3	ALL DIVS	170.4250	(T3) 131.8	168.0750	(T3) 131.8	A	CAMP 6
2	COMMAND	NIFC C34	ALL DIVS	173.9750	(T3) 131.8	164.8625	(T3) 131.8	A	MONKEY RIDGE
3	COMMAND	NIFC C35	ALL DIVS	173.8625	(T3) 131.8	163.8250	(T3) 131.8	A	SHIP MTN LOOKOUT
4	COMMAND	NIFC C48	ALL DIVS	165.4625	(T3) 131.8	162.1750	(T3) 131.8	A	HIGH DIVIDE
5	FUTURE	NIFC C55	NOT IN USE	165.5125	(T3) 131.8	173.8375	(T3) 131.8	A	FUTURE USE
6	TACTICAL	NIFC T1	D	168.0500	(T3) 131.8	168.0500	(T3) 131.8	A	
7	TACTICAL	NIFC T3	A	168.6000	(T3) 131.8	168.6000	(T3) 131.8	A	
8	TACTICAL	NIFC T4	MM, YY	166.7250	(T3) 131.8	166.7250	(T3) 131.8	A	
9	TACTICAL	NIFC T5	PP, DIVIDE STR GP	166.7750	(T3) 131.8	166.7750	(T3) 131.8	A	
10	TACTICAL	NIFC T6	SS, VV, CONTINGENCY	168.2500	(T3) 131.8	168.2500	(T3) 131.8	A	
11	TACTICAL	VFIRE 22	B	154.2650	(T6) 156.7	154.2650	(T6) 156.7	A	
12	TACTICAL	VFIRE 24	GASQT STR GP/NIGHT	154.2725	(T6) 156.7	154.2725	(T6) 156.7	A	GASQUET STRUCTURE/NIGHT
13	A/G CMD	A/G CMD	ALL DIVS	173.8500	0.0	173.8500	0.0	A	OPS, BRANCH AND DIVISION USE
14	A/G TAC	A/G TAC	ALL DIVS	169.4875	0.0	169.4875	0.0	A	AIR TO GROUND TACTICAL
15	TACTICAL	CALCORD	ALL DIVS	156.0750	(T6) 156.7	156.0750	(T6) 156.7	A	EMS AIR COORDINATION
16	AIRGUARD	AIRGUARD	ALL DIVS	168.6250	0.0	168.6250	(T1) 110.9	A	EMERGENCY
17									
18									
19									
20	AIRGUARD	AIRGUARD	ALL DIVS	168.6250	0.0	168.6250	(T1) 110.9	A	EMERGENCY
5. Special Instructions									
CURRENT CLONE: SSRC825. COMMAND CHANNELS LINKED. FIND WHICH ONE WORKS BEST IN YOUR OPERATIONAL AREA. SMITH RIVER COMPLEX - SOUTH COMMUNICATIONS PHONE # 760-220-2863									
6. Prepared by (Communications Unit Leader): Name: CHRIS OLIVER COML(t)			Signature: <i>Chris Oliver</i>						
ICS 205 - CONTROLLED UNCLASSIFIED INFORMATION//BASIC			Date/Time: 08/24/23 1930						

Hydration

Dehydration is the result of the body trying to regulate its temperature naturally through sweating. Maintaining body fluids is essential for sweating. You must hydrate before, during, and after your shift.

Studies conducted on wildland firefighters indicate that during fire suppression activities firefighters need to drink a minimum of one quart of fluid each hour of work.

Before work, you should take extra fluids to prepare for the heat. Drink one or two cups of water, juice, or a sports drink before work.

While working, drink at least one quart of fluid per hour. Drink as much as you can during the lunch break. Water is your greatest need during work in the heat.

Thirst always underestimates fluid needs, so you should drink more than you think you need.

You can assess your hydration by observing the volume, color, and concentration of your urine. Low volumes of dark, concentrated urine or painful urination indicate a serious need for rehydration. Other signs of dehydration include a rapid heart rate, weakness, excessive fatigue, and dizziness.

Rapid loss of several pounds of body weight is a certain sign of dehydration. Rehydrate before returning to work; working in a dehydrated state can lead to serious consequences, including heat stroke, muscle breakdown, and kidney failure.

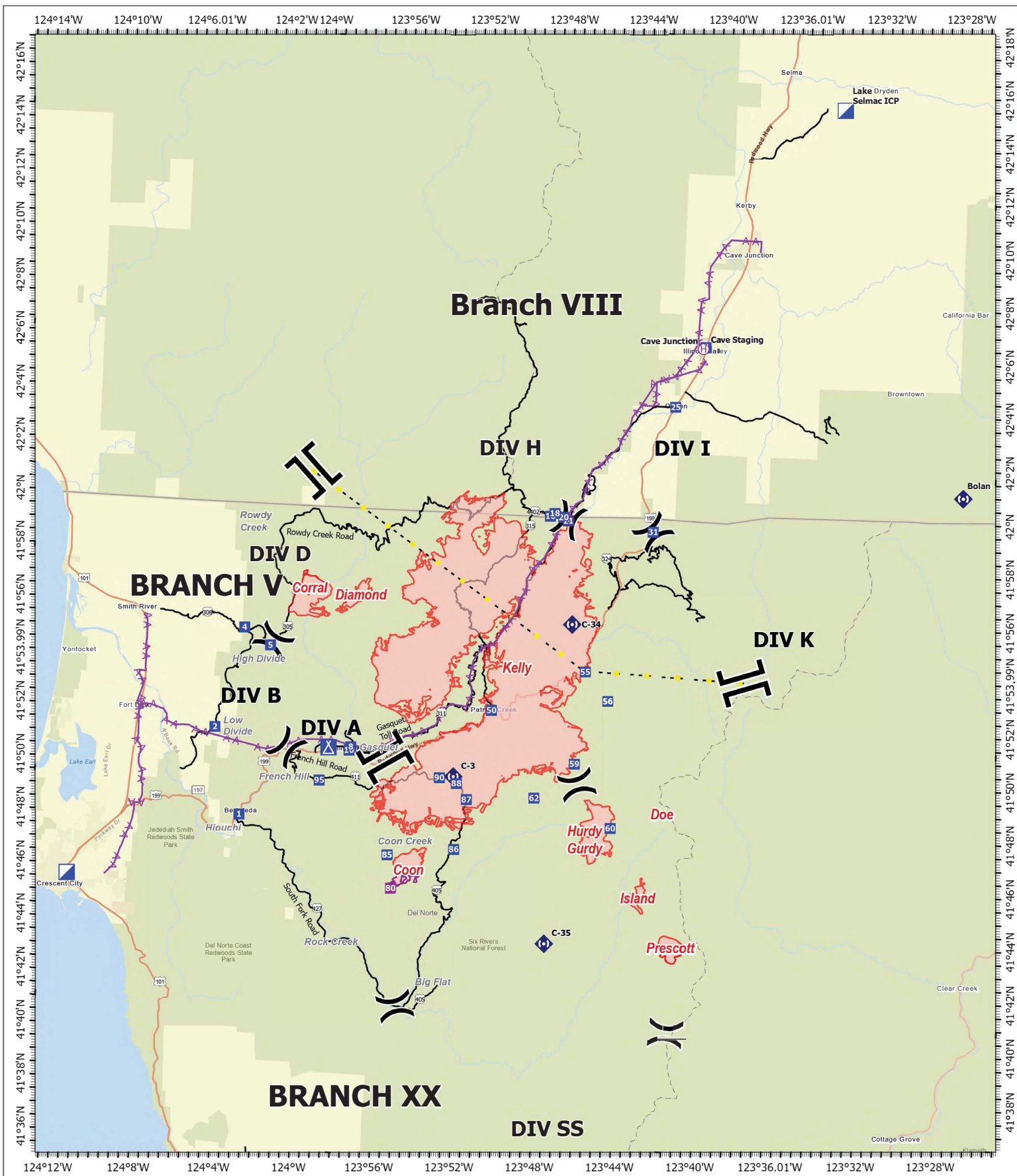
What are you doing right now to ensure that you are hydrated?

Margaret Dietrich, HRSP/TNSP
 Cell 360-701-3154 or Team13trsp@outlook.com



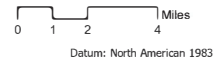
LOGISTICS

Lake Selmac ICP	Rough & Ready Supply/Ground Support (located across Hwy 199 from Cave Staging)
<p>Kitchen Hours</p> <ul style="list-style-type: none"> • Breakfast 0530 – 0900 • Lunch/Water/ICE available at ICP • Dinner 1730 Swing Shift Only • Dinner 1800 – 2200 <p>Showers</p> <ul style="list-style-type: none"> • Open 0500 – 1200 • Open 1400 – 2200 <p>Laundry – (located next to showers)</p> <ul style="list-style-type: none"> • Open 0500-2200 24hr turnaround 	<p>Supply</p> <ul style="list-style-type: none"> • Open 0600 – 2100 <p>Fuel Tender</p> <ul style="list-style-type: none"> • Open 0600 – 1000 • Open 1500 – 2100



**SMITH RIVER
COMPLEX
NORTH**
CA-SRF-000968
8/25/2023
57,225 acres
IR updated 08/23/2023 @ 1829

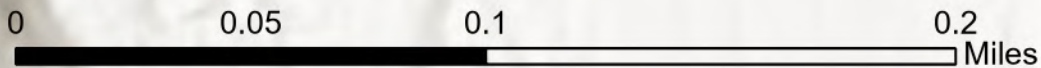
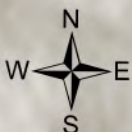
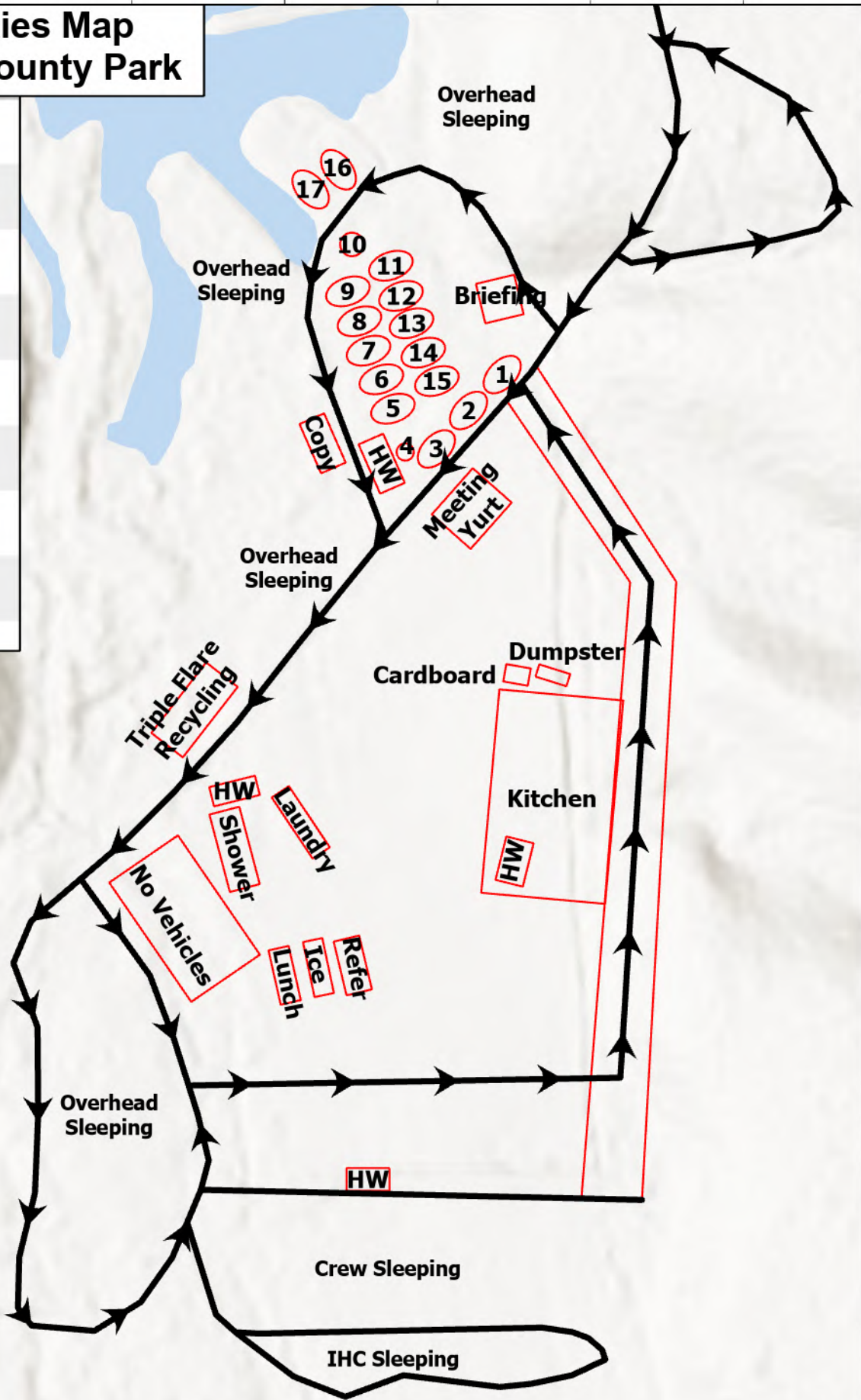
- Label Point
- Helispot
- Helibase
- Division Break
- Branch Break
- Incident Command Post
- Drop Point
- Camp
- Staging Area
- Repeater
- Highlighted Feature
- Aerial Hazard
- County Road
- Wildfire Daily Fire Perimeter
- Community/Areas
- L_20230822_1845_SmithRiverCoNorth_CASRF00968_majorOpsRds



Camp Facilities Map Lake Selmac County Park

Security	1
Communications	2
Medical	3
Ordering	4
Check-in/Demob	5
Plans	6
GIS/Situation	7
Logistics	8
IC/Liason	9
HR/Training	10
Operations	11
Resources/Air Ops	12
Safety/FBAN/IMET	13
PIO	14
Finance	15
Agency Administrators	16
Meeting Yurt	17

Ground support and supply moved to 30365 Redwood Hwy Cave Junction, OR 97523



MEDICAL PLAN (206 WF)

1. Incident/Project Name				2. Operational Period			
Smith River Complex North				Date/Time: 8/25 0600 – 8/26 0600			
3. Ambulance Services							
Name	Complete Address	Phone	Advanced Life Support (ALS)				
AMR	Cave Junction, OR	911	Yes	No	X		
4. Air Ambulance Services							
Name	Phone	Type of Aircraft & Capability					
Mercy Flight	1-800-903-9000 (Press 0)	Critical Care Team of Paramedic and RN 24 hr, 100'x100' LZ.					
REACH	1-800-338-4045	Critical Care Team of Paramedic and RN 24 hr, 100'x100' LZ.					
Teton Short Haul	Smith North Comms/Rogue CC	ALS, Short Haul, Daytime-Sunriver, OR					
National Guard Hoist	Smith North Comms/NWCC	24 hr, Roseburg, OR					
5. Hospitals							
Name	Degrees Decimal Minutes	Travel Time From ICP		Phone	Helipad		Level of Care
Asante 3 Rivers Medical Center (Grants Pass, OR)	Lat: 42° 25.27' N	20	90	541-472-7081	X		Level III Trauma
	Long: 123° 20.56' W	Min	Min.				
Asante Rogue Regional Medical Center (Medford, OR)	Lat: 42° 19.05' N	40	120	541-789-7367	X		Level II Trauma
	Long: 122° 50.00' W	Min	Min.				
Legacy Emanuel Hospital (Portland, OR)	Lat: 45° 32.668' N	1.5	5	503-413-4121	X		Level I Trauma Burn Center
	Long: 122° 40.293' W	Hrs.	Hrs.				
Sutter Coast Hospital (Crescent City, CA)	Lat: 41° 46.27454' N	X	2	707-464-8888		X	Level IV Trauma
	Long: 124° 11.537' W		Hrs.				
Mercy Medical Center (Redding, CA)	Lat: 40° 34.14' N	1	4	530-225-6000	X		Level II Trauma
	Long: 122° 23.97' W	Hr.	Hrs.				
UC Davis Medical Center (Sacramento, CA)	Lat: 38° 33.20' N	2	6	916-734-3636	X		Level I Trauma Burn Center
	Long: 121° 27.28' W	Hrs.	Hrs.				
ICP	EMS Responders & Capability:		James Brown MEDL, EMPF 360-775-5413 Ben Meacham MEDL, EMTF 360-921-3817 Mark Notaras MEDL, EMTF 509-386-7860				
	Equipment Available on Scene:		ALS Kit, LP15 defib, O2, OTC meds				
	Medical Emergency Channel:		Smith River North Communications Plan				
	ETA for Ambulance to Scene:						
	Air:		30 – 60 min				
	Ground:		30 – 60 min				
	Approved Heli-Spot						
	Lat: Long:						
DIV H	EMS Responders & Capability:		Medic 2 Erica Jackson 662-588-2328 ALS Kit/AED EMT 1 Lisa Johnson 909-632-5999 BLS Kit/AED				
	Equipment Available on Scene:		ALS Kit, defib, O2, OTC meds				
	Medical Emergency Channel:		Smith River North Communications Plan				
	ETA for Ambulance to Scene:						
	Air:		30-60 min				
	Ground:		60 min				
	Approved Heli-Spot						
	Lat: Long:						
DIV I	EMS Responders & Capability:		Medic 4 Chad Payletz 954-326-9006 ALS Kit/AED EMT 5 Johnna Hyde 218-343-7491 BLS Kit/AED EMT 4 Jonathon Cahill 319-431-1663 BLS Kit/AED AMBO 1 Mike Wertz 928-303-0856 ALS 4X4 Ambulance REMS 1 Dan Blaul 949-577-2663 ALS Kit/UTV Rope Rescue				
	Equipment Available on Scene:		ALS Kit, defib, O2, OTC meds				
	Medical Emergency Channel:		Smith River North Communications Plan				
	ETA for Ambulance to Scene:						
	Air:		30-60 min				
	Ground:		60 min				
	Approved Heli-Spot						
	Lat: Long:						

MEDICAL PLAN (206 WF)

DIV K	EMS Responders & Capability:	Medic 1 Joel Bower 360-461-7390 ALS Kit/AED Medic 3 Stephan Smith 636-748-0373 ALS Kit/AED EMT 2 James Henson 208-316-4658 BLS Kit/AED AMBO 2 Lanee Forkner 480-625-5353 ALS 4X4 Ambulance REMS 2 Brady Graham 541-282-4637 ALS Kit/UTV Rope Rescue
	Equipment Available on Scene:	ALS Kit, defib, O2, OTC meds
	Medical Emergency Channel:	Smith River North Communications Plan
	ETA for Ambulance to Scene:	
	Air:	30-60 min
	Ground:	60 min
	Approved Heli-Spot	
	Lat:	
Long:		
STRUCTURE EAST	EMS Responders & Capability:	Medic 6 Alex Vera 773-698-3224 ALS Kit/AED
	Equipment Available on Scene:	ALS Kit, defib, O2, OTC meds
	Medical Emergency Channel:	Smith River North Communications Plan
	ETA for Ambulance to Scene:	
	Air:	30-60 min
	Ground:	60 min
	Approved Heli-Spot	
	Lat:	
Long:		
STRUCTURE WEST	EMS Responders & Capability:	EMT 3 Trevor Brant 217-622-9158 BLS Kit/AED
	Equipment Available on Scene:	BLS Kit, defib, O2
	Medical Emergency Channel:	Smith River North Communications Plan
	ETA for Ambulance to Scene:	
	Air:	30-60 min
	Ground:	60 min
	Approved Heli-Spot	
	Lat:	
Long:		
CAVE HELIBASE	EMS Responders & Capability:	Medic 5 Ryan Shank 717-490-4990 ALS Kit/AED
	Equipment Available on Scene:	ALS Kit, defib, O2, OTC meds
	Medical Emergency Channel:	Smith River North Communications Plan
	ETA for Ambulance to Scene:	
	Air:	
	Ground:	10 min
	Approved Heli-Spot	
	Lat:	
Long:		

Prepared By (Medical Unit Leader)	Date	Reviewed By (Safety Officer)	Date
Ben Meacham MEDL	8/24/2023	Ray Hershey SOF2	8/24/2023
Signature: <i>Ben Meacham</i>		Signature: <i>Ray Hershey</i>	

MEDICAL PLAN (ICS 206 WF)

Controlled Unclassified Information//Basic

Medical Incident Report

FOR A NON-EMERGENCY INCIDENT, WORK THROUGH CHAIN OF COMMAND TO REPORT AND TRANSPORT INJURED PERSONNEL AS NECESSARY.

FOR A MEDICAL EMERGENCY: IDENTIFY ON-SCENE INCIDENT COMMANDER BY NAME AND POSITION AND ANNOUNCE "MEDICAL EMERGENCY" TO INITIATE RESPONSE FROM IMT COMMUNICATIONS/DISPATCH.

Use the following items to communicate situation to communications/dispatch.

1. CONTACT COMMUNICATIONS / DISPATCH (Verify correct frequency prior to starting report)

Ex: "Communications, Div. Alpha. Stand-by for Emergency Traffic."

2. INCIDENT STATUS: Provide incident summary (including number of patients) and command structure.

Ex: "Communications, I have a Red priority patient, unconscious, struck by a falling tree. Requesting air ambulance to Forest Road 1 at (Lat./Long.) This will be the Trout Meadow Medical, IC is TFLD Jones. EMT Smith is providing medical care."

Severity of Emergency / Transport Priority	<input type="checkbox"/> RED / PRIORITY 1 Life or limb threatening injury or illness. Evacuation need is IMMEDIATE <i>Ex: Unconscious, difficulty breathing, bleeding severely, 2° – 3° burns more than 4 palm sizes, heat stroke, disoriented.</i> <input type="checkbox"/> YELLOW / PRIORITY 2 Serious Injury or illness. Evacuation may be DELAYED if necessary. <i>Ex: Significant trauma, unable to walk, 2° – 3° burns not more than 1-3 palm sizes.</i> <input type="checkbox"/> GREEN / PRIORITY 3 Minor Injury or illness. Non-Emergency transport <i>Ex: Sprains, strains, minor heat-related illness.</i>	
Nature of Injury or Illness & Mechanism of Injury		Brief Summary of Injury or Illness <i>(Ex: Unconscious, Struck by Falling Tree)</i>
Evacuation Request		Air Ambulance / Short Haul/Hoist Ground Ambulance / Other
Patient Location		Descriptive Location & Lat. / Long. (WGS84)
Incident Name		Geographic Name + Medical <i>(Ex: Trout Meadow Medical)</i>
On-Scene Incident Commander		Name of on-scene IC of Incident within an Incident <i>(Ex: TFLD Jones)</i>
Patient Care		Name of Care Provider <i>(Ex: EMT Smith)</i>

3. INITIAL PATIENT ASSESSMENT: Complete this section for each patient as applicable (start with the most severe patient)

Patient Assessment: See IRPG PAGE 106

Treatment:

4. EVACUATION PLAN:

Evacuation Location (if different): (Descriptive Location (drop point, intersection, etc.) or Lat. / Long.) Patient's ETA to Evacuation Location:

Helispot / Extraction Site Size and Hazards:

5. ADDITIONAL RESOURCES / EQUIPMENT NEEDS:

Example: Paramedic/EMT, crews, immobilization devices, AED, oxygen, trauma bag, IV/fluid(s), splints, rope rescue, wheeled litter, HAZMAT, extrication

6. COMMUNICATIONS: Identify State Air/Ground EMS Frequencies and Hospital Contacts as applicable

Function	Channel Name/Number	Receive (RX)	Tone/NAC *	Transmit (TX)	Tone/NAC *
COMMAND					
AIR-TO-GRND					
TACTICAL					

7. CONTINGENCY: Considerations: If primary options fail, what actions can be implemented in conjunction with primary evacuation method? Be thinking ahead..

8. ADDITIONAL INFORMATION: Updates/Changes, etc.

REMEMBER: Confirm ETAs of resources ordered. Act according to your level of training. Be Alert. Keep Calm. Think Clearly. Act Decisively.