



## FINANCE MESSAGE

**Finance Email:** [2023.smithrivercomplex.finance@firenet.gov](mailto:2023.smithrivercomplex.finance@firenet.gov)

**Finance Phones:** Contractors: 971-245-0259 Agency Personnel: 971-762-8750

Please email your time to the Finance email address daily *with the word "NORTH" in the subject line.*

**See Finance if you have not closed out your time for Large Fire Support**

Finance documents required upon check in are:

### Required Documents

Overhead, Agency Crews & Cooperators	Contract Resources
<b>Check-in docs needed:</b> Resource Order, Manifest, Cooperative Agreement, Casual Hire Form w/ECI# (as applicable)	<b>Check-in docs needed:</b> Resource Order, Manifest, Full Contract/Agreement, Certifications ( <i>if required</i> ) Pre-Inspection
<b>Daily:</b> CTRs, Shift Tickets	<b>Daily:</b> CTRs, Shift Tickets, receipts (claims, etc.)
<b>Demob:</b> Signed OF-288; Signed OF-286	<b>Demob:</b> Contractor Evaluations, Shift Tickets, receipt(s) for Addition/Deductions, Post-Inspection, Signed OF-286

#### Additional Incident Information (to be added to your Shift Ticket or CTR)

Incident Name: Smith River Complex North

Incident Number: CA-SRF-000968

Financial codes:

DOI – QJ6L

Washington DNR 221-ICM

USDA – P5QJ6L (0510)

## DEMOB

**Fliers complete the "Air Travel Request" QR code below, 72 hours prior to flight date.**

- Return supplies to the Cache
- Return radios, antennas, etc., to Communications
- Contact Finance about closing out your paperwork
- If you are a Trainee contact the Training Specialist, stop by or call 360-701-3154

**Once the above items have been completed, SCAN the DMOB QR code and complete the questions.**



Air Travel



DEMOB

**Call Demob at 971-713-0265 to confirm the information has been received.**

## CHECK-IN

Please complete the virtual check-in process via the link below. If you have any questions, please email check-in at [2023.smithrivercomplex.checkin@firenet.gov](mailto:2023.smithrivercomplex.checkin@firenet.gov). Please include NORTH and your request number in the subject line when emailing check-in.

You are not checked in until you provide the following:

- Red Cards
- Roster/Manifest



#### **Process for crew/operator personnel swaps:**

Contact Check-In at 208-891-6877 or stop by Lake Selmac ICP and provide the necessary information on personnel changes 48 hours prior to swapping crew members/operators.

<b>INCIDENT OBJECTIVES</b>	1. Incident Name <b>Smith River Complex North</b>	2. Date <b>August 25, 2023</b>	3. Time <b>2000</b>
<b>4. Operational Period: 08/26-27/2023 0700-0700</b>			
<b>5. General Objectives:</b>			
Implement a FULL suppression strategy for the Smith River Complex:			
<ul style="list-style-type: none"> <li>• Provide for firefighter and public safety through hazard recognition and application of the risk management process.</li> <li>• Coordinate public information to provide timely and continuous updates to affected agency partners, cooperators, and the public.</li> <li>• Coordinate suppression activities with READs to minimize impacts on natural and cultural resources.</li> <li>• Effectively manage and track costs for all incidents identified within the Smith River Complex.</li> <li>• Close coordination with Regions 5 and 6 fire leadership to ensure effective and efficient management of firefighting resources.</li> <li>• Smith River Complex has two IMTS managing the incident with CA-15 to the south and PNW-13 to the north.</li> <li>• Effectively manage and track costs for all incidents identified within the Smith River Complex.</li> </ul>			
Smith River Complex North (PNW-13):			
<ul style="list-style-type: none"> <li>• Protect and minimize the impact to the communities of Elk creek, Illinois valley, Dwight creek, Takelma, and Sun star.</li> <li>• Evaluate control features, develop structure protection group.</li> <li>• Work with Josephine and Curry Counties in Oregon, as well as Del Norte County in California for evacuation levels and future recommendations.</li> <li>• Develop a PACE model, in coordination with CA-15.</li> </ul>			
Smith River Complex South (CA-15):			
<ul style="list-style-type: none"> <li>• Minimize impact to the communities and outlying areas near Gasquet, Pioneer, Lower Jones Creek, Washington Flat, Siskiyou Fork, French Hill, Coon Creek, Rock Creek, and Crescent City, as well as water resources, transportation routes, electrical infrastructure, and natural and cultural resources.</li> <li>• East of the Six Rivers National Forest boundary</li> <li>• West of the Six Rivers and Klamath National Forest boundary</li> <li>• North of the 15N01 forest road</li> <li>• South of the Rouge Siskiyou National Forest Boundary</li> </ul>			
<b>5a. Incident Requirements</b>			
<ul style="list-style-type: none"> <li>• Provide Agency Administrator updates and briefings on incident status as conditions evolve.</li> <li>• The Smith River Complex is being managed with a full suppression strategy.</li> <li>• Personnel on the incident will implement a risk-based decision-making process, with shared AA alignment.</li> <li>• Firefighting operations will implement tactics that offer the highest probability of success to achieve the strategy of suppressing the fire, preventing unnecessary exposure to ground personal, suppression related damage, and protecting values at risk.</li> <li>• Values include the safety of the public, and firefighters; including private and tribally held timberlands.</li> </ul>			
<b>5b. Leaders Intent</b>			
<ul style="list-style-type: none"> <li>• <b>Safety:</b> Firefighter, public, and aviation safety will be addressed through hazard/exposure risk mitigation processes.</li> <li>• <b>Risk Management:</b> Utilize an aligned risk assessment process which mitigates exposure to firefighters through evaluation of conditions during the duration of the incident.</li> <li>• <b>Communication:</b> Keep Agency Administrators and firefighters informed of strategic actions, accomplishments, and challenges.</li> <li>• <b>Operations:</b> Make informed strategic/tactical decisions suppressing the fire in the right geographic locations with the appropriate resources having the highest probability of success.</li> <li>• <b>Stakeholders:</b> Collaborate with local partners, officials, and landowners to provide situational updates pertinent to the fire.</li> <li>• <b>Logistics:</b> Provide support ensuring food, water, and shelter for incident responders.</li> <li>• <b>Human Resources:</b> Ensure that all incident personnel are treated with dignity and respect, while having zero tolerance for harassment, alcohol, or illegal drug use.</li> <li>• <b>Public Information:</b> Provide timely and accurate information through media outlets, trap lines, briefings, community meetings, and social platforms.</li> <li>• <b>Finance:</b> Monitor and communicate incident cost associated with meeting incident objectives.</li> <li>• <b>Planning:</b> Provide incident documentation, resource tracking, and accurate data management.</li> </ul>			
<b>6. Weather Forecast &amp; General Safety Message for Period – See Attached</b>			
<b>7. Attachments (mark if attached)</b>			
<input checked="" type="checkbox"/> Organization List - ICS 203	<input checked="" type="checkbox"/> Weather Forecast	<input checked="" type="checkbox"/> Safety Message	
<input checked="" type="checkbox"/> Div. Assignment Lists - ICS204	<input checked="" type="checkbox"/> Fire Behavior Forecast	<input type="checkbox"/> Medical Emergency Com Plan	
<input checked="" type="checkbox"/> Communications Plan - ICS 205	<input checked="" type="checkbox"/> Incident Map	<input type="checkbox"/>	
<input checked="" type="checkbox"/> Medical Plan - ICS 206	<input checked="" type="checkbox"/> Air Operations - ICS 220	<input type="checkbox"/>	
<b>9. Prepared by</b> Aileen Nichols		<b>9. Approved by (Incident Commander)</b> Eric Riener	

<b>ORGANIZATION ASSIGNMENT LIST</b>	
1. Incident Name <b>Smith River Complex North</b>	
2. Date <b>August 25, 2023</b>	3. Time <b>1830</b>
4. Operational Period <b>August 26-27, 2023 0700-0700</b>	
<b>Position</b>	<b>Name</b>
<b>NWIMT 13 LWD 9/02/2023</b>	
<b>5. Incident Commander and Staff</b>	
Incident Commander	<b>Eric Riener</b>
Deputy Incident Commander	<b>Brian Gales</b>
Liaison Officer	<b>Larry Nickey</b>
Safety Officer	<b>Ray Hershey</b>
Information Officer	<b>Randall Rische</b>
Information Officer Deputy	<b>Eric Waters</b>
Human Resource Specialist	<b>Margaret Dietrich</b>
<b>6. Agency/Organization Representative(s):</b>	
USFS RSF Agency Administrator	<b>Al Watson</b>
USFS RSF River Agency Representative	<b>Scott Blower</b>
USFS RSF Fire Management Liaison	<b>Mike McCann</b>
BLM Agency Administrator	<b>Steven Lydick</b>
BLM Agency Administrator - t	<b>Heidi Lowery</b>
BLM Agency Representative	<b>Chris Foster</b>
Oregon Department of Forestry	<b>Ryan Gorden</b>
Lead READ	<b>Stacy Johnson</b>
<b>7. Planning Section</b>	
Plans Chief	<b>Aileen Nichols</b>
Resources Unit	<b>Meredith Butcher</b>
Resources Unit - t	<b>Carolyn Zanofto</b>
Status Check-In	<b>Sandy Hoffman</b>
Status Check-In/Documentation Unit - t	<b>Robert Wandel</b>
Demob Unit	<b>Laura Backlund</b>
Situation Unit - t	<b>Laurie Bergvall</b>
Fire Behavior Analyst	<b>Dean Warner</b>
Incident Meteorologist	<b>Jonathan Chriest</b>
Air Resource Advisor	<b>Tod Johnson</b>
Air Resource Advisor - t	<b>Ghazal Majidi-Weese</b>
GIS Specialist	<b>Kayla Fermin</b>
GIS Specialist - t	<b>David Hines</b>
Computer Specialist	<b>Dave Johnson</b>
Computer Specialist	<b>Jeff Hixon</b>
Computer Specialist - t	<b>Zak Thomas</b>
Strategic Operational Planner - t	<b>Scott Brewer</b>
<b>8. Logistics Section</b>	
Logistics Chief	<b>Bryan Swanberg</b>
Logistics Chief - t	<b>Cindy Preston</b>
Deputy Logistics Chief	<b>Jim Hammer</b>
Deputy Logistics Chief	<b>Peter Fitzmaurice</b>
Supply Unit Leader - t	<b>Jon Byerly</b>
Ordering Manager	<b>Rob Jeter</b>
Ordering Manager - t	<b>Robert Yarnall</b>
Communications Unit Ldr - t	<b>Bruce Hanna</b>
Incident Comm Mgr	<b>Alandra Swords</b>
Com Tech	<b>Kevin Alexander</b>
Food Unit Leader	<b>Pat Young</b>
Facilities Unit Leader	<b>Keith Yonaka</b>

Facilities Unit Leader	<b>Shannon Anderson</b>	
Medical Unit Leader	<b>Ben Meacham</b>	
Medical Unit Leader	<b>James Brown</b>	
Ground Support Unit	<b>Dave Hesburn</b>	
Ground Support Unit	<b>Billie Hunter</b>	
Receiving/Distribution Mgr - t	<b>Aaron Ritter</b>	
Base Camp Manager - t	<b>Justin Schmal</b>	
<b>9. Operations Section</b>		
Operations (Field)	<b>John Spencer Jesse Stone - t</b>	
Operations (Planning/ Strategic)	<b>Shawn Jaca</b>	
Operations (Planning)	<b>Tim Crawley-Murphey - t</b>	
Operations (Night)	<b>Larry Pingle</b>	
<b>a. North</b>		
Branch Director		
Division Supervisor	<b>H</b>	<b>Anna Graves Jothan McGaughey - t</b>
Division Supervisor	<b>I</b>	<b>Whitney Machado Silas Baffa - t</b>
Division Supervisor	<b>K</b>	<b>Derrick Youngerman</b>
Group Supervisor	<b>Structure West</b>	<b>Robert Boles Shannon Clark - t</b>
Group Supervisor	<b>Structure East</b>	<b>Miranda Stuart Billy Turner - t</b>
Group Supervisor	<b>Contingency West</b>	<b>Derreck Johnson</b>
Group Supervisor	<b>Contingency East</b>	<b>Randy Anderson Mark Johnson - t</b>
Manager	<b>Staging</b>	<b>Rick Long</b>
<b>b.</b>		
Branch Director		
Division Supervisor		
Division Supervisor		
<b>c. Air Operations Branch</b>		
Air Operations	<b>Steve Markason</b>	
Air Support Group	<b>Jim Dotson</b>	
Air Support Group - t	<b>Bert Smith</b>	
Helibase Manager (Cave)	<b>George Leite</b>	
<b>10. Finance Section</b>		
Finance Chief	<b>Veronika Klukas</b>	
Finance Chief - t	<b>Lori Price</b>	
Cost Unit	<b>Paula James</b>	
Time Unit	<b>Angie Chapman</b>	
Time Unit - t	<b>Heather Fitzpatrick</b>	
Proc Unit Leader	<b>Laurette Gaylord</b>	
Proc Unit Leader - t	<b>Eric Soto</b>	
COMPS/CLAIMS	<b>Hanna Jeter</b>	
Incident Cont. Project Insp	<b>Stan Zazado</b>	
PTRC/In-Box Manager - t	<b>Ryker Aldred</b>	
<b>PREPARED BY: Meredith Butcher</b>		



# Fire Weather Forecast



**FORECAST NO: 4**  
**PREDICTION FOR: Saturday-Sunday**  
**DATE: August 26, 2023**  
**FORECAST ISSUED: 1800 August 25, 2023**

**FIRE: Smith River Complex North**  
**UNIT: CA-SRF-968**  
**IMET: Jonathan Chriest (425-765-3749)**  
**SIGNED: *Jonathan Chriest***

**WEATHER DISCUSSION:** Valley elevations = 1400 ft (Illinois Valley), Ridgetop elevations = 3300 ft (Monkey Ridge)  
 An upper level trough remains stationary off the coast of northern California. This trough will bring a diurnal wind regime to the fire area, with light northeast winds over ridgetops in the overnight and early morning hours and southwest winds in the afternoon and evening hours. This will keep heavy smoke and low visibility over the fire area and in the Illinois Valley. The strength of the southwest winds in the afternoon will increase slightly each day through Monday. Today will be slightly warmer and drier than Friday, with little change expected for Sunday.

**TODAY:**

**WEATHER:** Smoke and patchy fog in the morning. Periods of heavy smoke in the afternoon, otherwise clear.

<b>MAX TEMP:</b>	<b>Valleys:</b> 83-89°F (1-3°F ↑)	<b>MIN RH:</b>	<b>Valleys:</b> 28-36% (5-7% ↓)
	<b>Ridgetops:</b> 79-83°F (1-2°F ↑)		<b>Ridgetops:</b> 39-45% (5-7% ↓)

<b>CHC WTG RAIN:</b> 0%	<b>LAL:</b> 1	<b>SFC VIS:</b> 0.5-1 mile.
-------------------------	---------------	-----------------------------

<b>WINDS:</b>	<b>Valleys:</b> Morning: downslope 2-4 mph, after 1200: WSW 6-9 mph with gusts to 18 mph in aligned valleys.
<b>(20 feet)</b>	<b>Ridgetops:</b> Morning: northeast 2-5 mph, after 1200: southwest 8-12 mph gusts to 20 mph.

<b>MIXING HEIGHT:</b> Rising to 6,000 ft by 1300.	<b>TRANSPORT WIND:</b> Southwest 6-9 mph.
---	---

**TONIGHT:**

**WEATHER:** Mostly clear. Very smoky with low visibility.

<b>MIN TEMP:</b>	<b>Valleys:</b> 48-52° (1-2°F ↓)	<b>MAX RH:</b>	<b>Valleys:</b> 75-85% (3-5% ↓)
	<b>Ridgetops:</b> 55-58° (1-2°F ↓)		<b>Ridgetops:</b> 51-59% (4-6% ↓)

<b>CHC WTG RAIN:</b> 0%	<b>LAL:</b> 1	<b>SFC VIS:</b> 0.5-1 mile.
-------------------------	---------------	-----------------------------

<b>WINDS:</b>	<b>Valleys:</b> Downslope 2-4 mph.
<b>(20 FEET)</b>	<b>Ridgetops:</b> Southwest 3-7 mph before 2200, then NE 4-6 mph.

<b>MIXING HEIGHT:</b> Dropping to 1,000 ft by 2200.	<b>TRANSPORT WIND:</b> Northeast 2-4 mph.
---	---

**SUNDAY:**

**WEATHER:** Mostly clear. Periods of heavy smoke.

<b>MAX TEMP:</b>	<b>Valleys:</b> 83-89°F (Little change)	<b>MIN RH:</b>	<b>Valleys:</b> 30-38% (1-2% ↑)
	<b>Ridgetops:</b> 79-83°F (Little change)		<b>Ridgetops:</b> 41-47% (1-2% ↑)

<b>CHC WTG RAIN:</b> 0%	<b>LAL:</b> 1	<b>SFC VIS:</b> 0.5-1 mile.
-------------------------	---------------	-----------------------------

<b>WINDS:</b>	<b>Valleys:</b> Morning: downslope 2-4 mph, after 1100: southwest 5-9 mph gusts to 18 mph.
<b>(20 feet)</b>	<b>Ridgetops:</b> Morning: east 2-5 mph, after 1100: WSW 8-12 mph gusts to 20 mph.

<b>MIXING HEIGHT:</b> Rising to 5,000 ft by 1300.	<b>TRANSPORT WIND:</b> Southwest 8-10 mph.
---	--

**EXTENDED OUTLOOK:** Monday will be a similar day to Sunday with another slight increase in the strength of west and southwest winds over ridgetops and through aligned valleys. On Tuesday, the upper level trough will move east across the area, bringing a shift to northwest winds. After the trough moves through, winds quickly turn to being from the NE on Wednesday and Thursday with strong gusts over ridgetops and through channeled valleys. Improved visibility is likely.

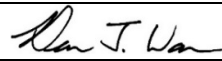


Nearby Weather Observations

Please send weather observations to Jonathan Chriest (IMET) at [jonathan.chriest@noaa.gov](mailto:jonathan.chriest@noaa.gov) or 425-765-3749



## Fire Behavior Forecast #6

<b>Incident:</b> Smith River Cx North CA-SRF-000968	<b>TYPE OF FIRE:</b> Wildfire
<b>DATE/TIME ISSUED:</b> 8/25/23 1900	<b>OPERATIONAL PERIOD:</b> 8/26-27/23 All Shifts
<b>FBAN:</b> Dean Warner	<b>Signed:</b> 

**Weather Summary** - See Incident Weather Forecast:  
Persistent dry and warm weather with morning east flow and afternoon west winds.

### Fuels

**Shrub:** Shrubs and brush are 1 to 3 feet high with a low to moderate load of grass intermixed with sparse stems of conifer. Manzanita brush and other live fuels are drought stressed from below normal amounts of spring precipitation. These live fuels are cured enough to contribute to fire spread. Given the exposed nature of this fuel type, eye level winds in excess of 6 mph can cause rates of spread to exceed 8 chains per hour. Without wind these fuels will typically exhibit low rates of spread.

**Timber litter and shrub:** Primary carrier of the fire is understory brush with timber and leaf litter. Expect slow rates of spread under moderate weather conditions. Canopy closure shelters fuels from wind so fire spread will be slow and continuous. Eye level winds in excess of 6 mph will allow fire to reach the canopy, resulting in torching and possible crowning. The drought stressed vegetation and areas of abundant dead fuel loading will promote fuel spread.

**OUTPUTS:**      Expected Fine Dead Fuel Moisture: 6%      POI: 60%

Fire Behavior: Active Atmosphere: Stable Max. spot distance: ¼ mile LAL: 1 ERC: 62 = 92 percentile Camp Lookout RAWS	<b>Fuel/Type Model</b>	<b>Maximum Rate of Spread</b>	<b>Maximum Flame Length</b>
	Shrub	6 ch/hr	2 ft.
	Timber litter shrub	4 ch/hr	1 ft.

Expected Fire Behavior is Based on the Warmest, Driest, Windiest Conditions Forecasted.

**General/Potential:** Good overnight RH recovery should narrow the burn window today. Fuels will remain dry and afternoon winds will continue to be unfavorable for our operational effort. East to west or south flowing drainages will provide the best alignment for afternoon west winds. Do not count on topography to shelter fuels from wind.

**Hotel:** The ridgetop location in this division will best align with the afternoon winds. Expect a strong fire advance into the old Biscuit Fire scar, beyond the 112 road and also into Whiskey Creek

**India:** Fire is firmly entrenched in the West Fork of the Illinois River. Expect the fire to advance north while making uphill runs to Oregon Mountain and to the west on the ridge line separating Blue Creek. Although the fuels may look sparse they will carry the fire with very little wind.

**Kilo:** Fire is not expected to get east of Highway 199, north of the Collier Tunnel. South of the tunnel, watch for fire to establish in the Siskiyou and Middle Forks of the Smith River, the riparian influenced areas offer abundant fuels for fire to progress up drainage to the east.

**Night Operations:** Around night fall, winds will shift to an east flow providing favorable conditions for operational efforts. Expect good burning conditions through midnight.

### Air Operations

Expect smoke impacts to aviation assets throughout the day.

### Safety

**Standard Order #2** Is emphasized today: **Know what your fire is doing at all times.** This fire encompasses a large footprint and fire behavior can differ in several areas. It is critically important to remain in communications to know what this fire is doing at all times. Post lookouts to improve your situational awareness. Prepare to react for changes that may affect your plan. And, as always, know your escape routes and safety zones in case you need to disengage from the fire.

<b>DIVISION ASSIGNMENT LIST</b>				1. Branch	2. Division <b>H</b>	
3. Incident Name <b>Smith River Complex North</b>				4. Operational Period Date: <b>08/26/2023</b> Time: <b>0600-2200</b>		
5. Operations Personnel						
Operations Chief		<b>John Spencer Jesse Stone - t</b>		Division Supervisor		<b>Anna Graves Jothan McGaughey - t</b>
Safety Officer		<b>Ray Hershey</b>		Air Attack		
6. Resources Assigned this Period						
	Strike Team/Task Force/Resource Designator	Leader	# Persons	LWD	Drop Off PT./Time	Pick Up PT./Time
1	<b>**E-50061 ENG6 3Bs</b>	<b>Jonathan Toeppen</b>	<b>3</b>	<b>8/31</b>	<b>Lake Selmac ICP</b>	<b>Lake Selmac ICP</b>
2	<b>**E-50062 ENG6 Lone Pine</b>	<b>Katy Adams</b>	<b>3</b>	<b>8/31</b>	<b>Lake Selmac ICP</b>	<b>Lake Selmac ICP</b>
3						
4	<b>E-50040 CHP2 Prometheus</b>	<b>Steven Carrick</b>	<b>3</b>	<b>9/5</b>	<b>Lake Selmac ICP</b>	<b>Lake Selmac ICP</b>
5						
6						
7						
8						
9						
10						
11						
12						
13						
14						
15						
16	<b>Pacific Power Task Force</b>	<b>Anna Arritola</b>	<b>5</b>		<b>No meals</b>	
17						
18						
19	<b>O-68 Medic 2</b>	<b>Erica Jackson</b>	<b>1</b>		<b>Lake Selmac ICP</b>	<b>Lake Selmac ICP</b>
20	<b>O-50032 EMT1</b>	<b>Lisa Johnson</b>	<b>1</b>		<b>Lake Selmac ICP</b>	<b>Lake Selmac ICP</b>
21						
22						
		<b>Meal count</b>	<b>16</b>			
7. Control Operations: <b>Task:</b> Continue prep on the 4402 Rd. Hold fire west of 4402 Rd. <b>Purpose:</b> Minimize impacts to communities and infrastructure to the north and east. <b>End state:</b> Impacts have been minimized to communities and infrastructure to the north and east.						
8. Special Instructions: **Indicates IA Resources. REAFs Bucher and Mero will contact DIVS upon entering and exiting their respective divisions.						
9. Division/Group Communication Summary						
<b>See Communications Plan</b>						
Prepared by (Resource Unit Ldr) <i>Meredith Butcher/Carolyn Zanotto</i>			Approved by (Planning Sect. Ch.) <i>Aileen Nichols</i>		Date <b>08/25/2023</b>	Time <b>2000</b>

DIVISION ASSIGNMENT LIST				1. Branch		2. Division <b>I (page 1)</b>	
3. Incident Name <b>Smith River Complex North</b>				4. Operational Period Date: <b>08/26/2023</b> Time: <b>0600-2200</b>			
5. Operations Personnel							
Operations Chief		<b>John Spencer Jesse Stone - t</b>		Division Supervisor		<b>Whitney Machado Silas Baffa - t</b>	
Safety Officer		<b>Ray Hershey</b>		Air Attack			
6. Resources Assigned this Period							
Strike Team/Task Force/Resource Designator		Leader	# Persons	LWD	Drop Off PT./Time	Pick Up PT./Time	
1	<b>O-50015 TFLD</b>	<b>Jyota Smith-Howard</b>	<b>1</b>	<b>9/3</b>	<b>Lake Selmac ICP</b>	<b>Lake Selmac ICP</b>	
2	<b>O-50014 HEQB</b>	<b>Clint Foster</b>	<b>1</b>	<b>9/3</b>	<b>Lake Selmac ICP</b>	<b>Lake Selmac ICP</b>	
3							
4	<b>O-50045 FMOD Toms Timber LLC</b>	<b>Tyler Pacheco</b>	<b>2</b>	<b>9/2</b>	<b>Lake Selmac ICP</b>	<b>Lake Selmac ICP</b>	
5	<b>O-50044 FMOD Cut Rite Inc</b>	<b>Dave Hillsman</b>	<b>2</b>	<b>9/4</b>	<b>Lake Selmac ICP</b>	<b>Lake Selmac ICP</b>	
6	<b>O-50075 FMOD Cut Rite Inc</b>	<b>Scott Opheim</b>	<b>2</b>	<b>9/5</b>	<b>Lake Selmac ICP</b>	<b>Lake Selmac ICP</b>	
7							
8	<b>C-50010 CRW1 Laguna IHC</b>	<b>Eddie Arellano</b>	<b>23</b>	<b>9/7</b>	<b>Lake Selmac ICP</b>	<b>Lake Selmac ICP</b>	
9	<b>C-50016 CRW1 Palomar IHC</b>	<b>Jose Ortega</b>	<b>23</b>	<b>8/29</b>	<b>Lake Selmac ICP</b>	<b>Lake Selmac ICP</b>	
10							
11	<b>C-50017 CR2I Redmond IHC</b>	<b>Dave Varon</b>	<b>22</b>	<b>8/31</b>	<b>Lake Selmac ICP</b>	<b>Lake Selmac ICP</b>	
12	<b>**C-50013 CR2I Pacific Oasis 14A</b>	<b>Jason Maza</b>	<b>20</b>	<b>8/31</b>	<b>Lake Selmac ICP</b>	<b>Lake Selmac ICP</b>	
13	<b>C-50022 CRW2 Tom Fery Farm</b>	<b>R. Hoffman-Wenting</b>	<b>20</b>	<b>9/7</b>	<b>Lake Selmac ICP</b>	<b>Lake Selmac ICP</b>	
14	<b>C-50004 CRW2 Pacific Coast</b>	<b>Javier Ramos</b>	<b>20</b>	<b>9/4</b>	<b>Lake Selmac ICP</b>	<b>Lake Selmac ICP</b>	
15	<b>C-50006 CRW2 Pacific Oasis</b>	<b>Jonathan Culp</b>	<b>20</b>	<b>9/7</b>	<b>Lake Selmac ICP</b>	<b>Lake Selmac ICP</b>	
16							
17	<b>**E-50065 ENG6 GE Forestry 1</b>	<b>Edgar Aguilar</b>	<b>3</b>	<b>8/31</b>	<b>Lake Selmac ICP</b>	<b>Lake Selmac ICP</b>	
18	<b>**E-50057 ENG6 Fuego 6</b>	<b>Chase Workman</b>	<b>3</b>	<b>9/1</b>	<b>Lake Selmac ICP</b>	<b>Lake Selmac ICP</b>	
19	<b>E-50058 ENG6 Lomakatsi 65</b>	<b>Antonio Lopez</b>	<b>3</b>	<b>8/31</b>	<b>Lake Selmac ICP</b>	<b>Lake Selmac ICP</b>	
20	<b>E-50059 ENG6 Green Mtn 88</b>	<b>Scott Brennan</b>	<b>3</b>	<b>8/31</b>	<b>Lake Selmac ICP</b>	<b>Lake Selmac ICP</b>	
21	<b>E-50060 ENG6 Sundance 5</b>	<b>Emilio Garcia</b>	<b>3</b>	<b>8/31</b>	<b>Lake Selmac ICP</b>	<b>Lake Selmac ICP</b>	
22							
		<b>Meal count</b>	<b>171</b>				
7. Control Operations: <b>Task:</b> Establish fireline from 4402 to Hwy 199. <b>Purpose:</b> Keep fire south of Gilligan Butte and west of Dwight Creek. <b>End state:</b> Impacts have been minimized to communities and infrastructure.							
8. Special Instructions: *REMS 1 staged at DP31. **Indicates IA Resources. REAFs Porter, Hughes, Saunders and Galuchie will contact DIVS upon entering and exiting their respective divisions.							
9. Division/Group Communication Summary							
<b>See Communications Plan</b>							
Prepared by (Resource Unit Ldr) <i>Meredith Butcher/Carolyn Zanotto</i>			Approved by (Planning Sect. Ch.) <i>Aileen Nichols</i>			Date <b>08/25/2023</b>	Time <b>2000</b>



<b>DIVISION ASSIGNMENT LIST</b>			1. Branch		2. Group <b>I (page 2)</b>	
3. Incident Name <b>Smith River Complex North</b>			4. Operational Period Date: <b>08/26/2023</b> Time: <b>0600-2200</b>			
5. Operations Personnel						
Operations Chief		<b>John Spencer Jesse Stone - t</b>		Group Supervisor		<b>Whitney Machado Silas Baffa - t</b>
Safety Officer		<b>Ray Hershey</b>		Air Attack		
6. Resources Assigned this Period						
Strike Team/Task Force/Resource Designator		Leader	# Persons	LWD	Drop Off PT./Time	Pick Up PT./Time
1	<b>**E-39 WTS2 Sugden 1</b>	<b>Tom Sugden</b>	<b>1</b>	<b>8/31</b>	<b>Lake Selmac ICP</b>	<b>Lake Selmac ICP</b>
2	<b>E-50056 WTS2 Autobrot 1</b>	<b>Dakota Williams</b>	<b>2</b>	<b>8/31</b>	<b>Lake Selmac ICP</b>	<b>Lake Selmac ICP</b>
3						
4	<b>E-40003 DZR2 Ace Earth Moving</b>	<b>Wade Comyford</b>	<b>2</b>	<b>9/4</b>	<b>Lake Selmac ICP</b>	<b>Lake Selmac ICP</b>
5	<b>E-40002 DZR2 Table Mtn. Forestry</b>	<b>Mitchell West</b>	<b>2</b>	<b>9/4</b>	<b>Lake Selmac ICP</b>	<b>Lake Selmac ICP</b>
6						
7	<b>E-40001 MBM2 Morris Forestry LLC</b>	<b>Todd Donahue</b>	<b>2</b>	<b>9/3</b>	<b>Lake Selmac ICP</b>	<b>Lake Selmac ICP</b>
8						
9						
10						
11						
12						
13						
14						
15						
16	<b>*O-50015 REMS 1</b>	<b>Dan Blaul</b>	<b>4</b>	<b>9/5</b>	<b>Lake Selmac ICP</b>	<b>Lake Selmac ICP</b>
17	<b>E-50099 Medic 24</b>	<b>Cody Baker</b>	<b>2</b>	<b>9/8</b>	<b>Lake Selmac ICP</b>	<b>Lake Selmac ICP</b>
18	<b>O-50029 Medic 4</b>	<b>Chad Payletz</b>	<b>1</b>	<b>9/5</b>	<b>Lake Selmac ICP</b>	<b>Lake Selmac ICP</b>
19	<b>O-50022 EMT 4</b>	<b>Jonathon Cahill</b>	<b>1</b>	<b>9/5</b>	<b>Lake Selmac ICP</b>	<b>Lake Selmac ICP</b>
20	<b>O-50024 EMT 5</b>	<b>Johnna Hyde</b>	<b>1</b>	<b>9/5</b>	<b>Lake Selmac ICP</b>	<b>Lake Selmac ICP</b>
21	<b>E-50031 AMBO 1</b>	<b>Mike Wertz</b>	<b>2</b>	<b>9/5</b>	<b>Lake Selmac ICP</b>	<b>Lake Selmac ICP</b>
22						
		<b>Meal count</b>	<b>20</b>			
7. Control Operations: <b>Task:</b> Establish fireline from 4402 to Hwy 199. <b>Purpose:</b> Keep fire south of Gilligan Butte and west of Dwight Creek. <b>End state:</b> Impacts have been minimized to communities and infrastructure.						
8. Special Instructions: *REMS 1 staged at DP31. **Indicates IA Resources. REAFs Porter, Hughes, Saunders and Galuchie will contact DIVS upon entering and exiting their respective divisions.						
9. Division/Group Communication Summary						
<b>See Communications Plan</b>						
Prepared by (Resource Unit Ldr) <i>Meredith Butcher/Carolyn Zanotto</i>			Approved by (Planning Sect. Ch.) <i>Aileen Nichols</i>		Date <b>08/25/2023</b>	Time <b>2000</b>

<b>DIVISION ASSIGNMENT LIST</b>			1. Branch		2. Division <b>K</b>	
3. Incident Name <b>Smith River Complex North</b>			4. Operational Period Date: <b>08/26/2023</b> Time: <b>0600-2200</b>			
5. Operations Personnel						
Operations Chief		<b>John Spencer Jesse Stone - t</b>		Division Supervisor		<b>Derrick Youngerman</b>
Safety Officer		<b>Ray Hershey</b>		Air Attack		
6. Resources Assigned this Period						
Strike Team/Task Force/Resource Designator		Leader	# Persons	LWD	Drop Off PT./Time	Pick Up PT./Time
<b>1</b>	<b>O-50140 TFLD</b>	<b>Russ Macal</b>	<b>1</b>	<b>9/7</b>	<b>Lake Selmac ICP</b>	<b>Lake Selmac ICP</b>
<b>2</b>	<b>O-50117 TFLD</b>	<b>Craig Kostrzewski</b>	<b>1</b>	<b>9/7</b>	<b>Lake Selmac ICP</b>	<b>Lake Selmac ICP</b>
<b>3</b>	<b>O-50095 FMOD The Art of Felling</b>	<b>Jeff Quebral</b>	<b>2</b>	<b>9/7</b>	<b>Lake Selmac ICP</b>	<b>Lake Selmac ICP</b>
<b>4</b>	<b>O-50076 FMOD Summers Timber</b>	<b>Jarret Wilsey</b>	<b>3</b>	<b>9/6</b>	<b>Lake Selmac ICP</b>	<b>Lake Selmac ICP</b>
<b>5</b>	<b>O-50096 FMOD C&amp;K Wildland Fire</b>	<b>T.D. Woodruff</b>	<b>2</b>	<b>9/6</b>	<b>Lake Selmac ICP</b>	<b>Lake Selmac ICP</b>
<b>6</b>	<b>O-50097 FMOD A&amp;C Cutting</b>	<b>Bill Smith</b>	<b>2</b>	<b>9/6</b>	<b>Lake Selmac ICP</b>	<b>Lake Selmac ICP</b>
<b>7</b>	<b>O-60007 FMOD Top Notch</b>	<b>Steve Hayter</b>	<b>2</b>	<b>9/5</b>	<b>Lake Selmac ICP</b>	<b>Lake Selmac ICP</b>
<b>8</b>	<b>O-60008 FMOD C&amp;K Wildland Fire</b>	<b>Cameron Hartness</b>	<b>2</b>	<b>9/5</b>	<b>Lake Selmac ICP</b>	<b>Lake Selmac ICP</b>
<b>9</b>	<b>O-50098 FMOD Top Notch</b>	<b>Kyle Armijo</b>	<b>2</b>	<b>9/7</b>	<b>Lake Selmac ICP</b>	<b>Lake Selmac ICP</b>
<b>10</b>	<b>E-50046 ENG3 Grande Ronde Tribes</b>	<b>Brett Daniels</b>	<b>5</b>	<b>9/5</b>	<b>Lake Selmac ICP</b>	<b>Lake Selmac ICP</b>
<b>11</b>	<b>E-50050 ENG3 TMFR Brush</b>	<b>Scott Fenley</b>	<b>4</b>	<b>9/5</b>	<b>Lake Selmac ICP</b>	<b>Lake Selmac ICP</b>
<b>12</b>	<b>E-50043 ENG6 B&amp;B</b>	<b>Tim Bailey</b>	<b>3</b>	<b>9/5</b>	<b>Lake Selmac ICP</b>	<b>Lake Selmac ICP</b>
<b>13</b>	<b>E-50037 WTS2 Lavenbarg</b>	<b>John Dalton</b>	<b>1</b>	<b>9/5</b>	<b>Lake Selmac ICP</b>	<b>Lake Selmac ICP</b>
<b>14</b>	<b>E-50039 DZR2 Barry Brown</b>	<b>Ed Machuse</b>	<b>3</b>	<b>9/5</b>	<b>Lake Selmac ICP</b>	<b>Lake Selmac ICP</b>
<b>15</b>	<b>E-50038 DZR2 Backwoods Equip</b>	<b>Jimm Hill</b>	<b>2</b>	<b>9/5</b>	<b>Lake Selmac ICP</b>	<b>Lake Selmac ICP</b>
<b>16</b>	<b>E-50069 FEL1 Nash Contracting</b>	<b>Travis Taruscio</b>	<b>2</b>	<b>9/6</b>	<b>Lake Selmac ICP</b>	<b>Lake Selmac ICP</b>
<b>17</b>	<b>E-50083 FEL1 Ponsse Miller Timber</b>	<b>Scott McElhaney</b>	<b>2</b>	<b>9/7</b>	<b>Lake Selmac ICP</b>	<b>Lake Selmac ICP</b>
<b>18</b>	<b>E-50034 MBM1 Upper Valley</b>	<b>James Kruckeberg</b>	<b>2</b>	<b>9/6</b>	<b>Lake Selmac ICP</b>	<b>Lake Selmac ICP</b>
<b>19</b>	<b>E-50138 MBM2 Hacker</b>	<b>Chris Hacker</b>	<b>2</b>	<b>9/8</b>	<b>Lake Selmac ICP</b>	<b>Lake Selmac ICP</b>
<b>20</b>	<b>E-50066 EXC2 DC Fire LLC</b>	<b>Dan Chancler</b>	<b>2</b>	<b>9/6</b>	<b>Lake Selmac ICP</b>	<b>Lake Selmac ICP</b>
<b>21</b>	<b>O-50013 Medic 1</b>	<b>Joel Bower</b>	<b>1</b>	<b>9/5</b>	<b>Lake Selmac ICP</b>	<b>Lake Selmac ICP</b>
<b>22</b>	<b>O-50029 Medic 3</b>	<b>Stephan Smith</b>	<b>1</b>	<b>9/5</b>	<b>Lake Selmac ICP</b>	<b>Lake Selmac ICP</b>
<b>23</b>	<b>O-50025 EMT 2</b>	<b>James Henson</b>	<b>1</b>	<b>9/5</b>	<b>Lake Selmac ICP</b>	<b>Lake Selmac ICP</b>
<b>24</b>	<b>O-50123 REMS 2</b>	<b>Brady Graham</b>	<b>2</b>		<b>Lake Selmac ICP</b>	<b>Lake Selmac ICP</b>
<b>23</b>	<b>AMBO 2</b>	<b>Lanee Forkner</b>	<b>2</b>	<b>9/6</b>	<b>Lake Selmac ICP</b>	<b>Lake Selmac ICP</b>
		<b>Meal count</b>	<b>50</b>			
7. Control Operations: <b>Task:</b> Continue construction of fireline from Hwy 199 east to 444 Rd. Prep existing dozer line to the west of 18N11 Rd. Prep existing line north of cell tower to Oregon Mtn Rd. <b>Purpose:</b> Keep fire south of the 18N11 Rd and east of Hwy 199. <b>End state:</b> Impacts have been minimized to communities and critical infrastructure to the north.						
8. Special Instructions: REAFs Bucher, Mero, Saunders and Galuchie will contact DIVS upon entering and exiting their respective divisions.						
9. Division/Group Communication Summary <b>See Communications Plan</b>						
Prepared by (Resource Unit Ldr) <i>Meredith Butcher/Carolyn Zanotto</i>		Approved by (Planning Sect. Ch.) <i>Aileen Nichols</i>		Date <b>08/25/2023</b>		Time <b>2000</b>

<b>DIVISION ASSIGNMENT LIST</b>				1. Branch		2. Group <b>Structure West</b>	
3. Incident Name <b>Smith River Complex North</b>				4. Operational Period Date: <b>08/26/2023</b> Time: <b>0600-2200</b>			
5. Operations Personnel							
Operations Chief		<b>John Spencer Jesse Stone - t</b>		Group Supervisor		<b>Robert Boles Shannon Clark - t</b>	
Safety Officer		<b>Ray Hershey</b>		Air Attack			
6. Resources Assigned this Period							
Strike Team/Task Force/Resource Designator		Leader	# Persons	LWD	Drop Off PT./Time		Pick Up PT./Time
<b>1</b>	<b>**O-50070 STEN</b>	<b>Rich McIntyre</b>	<b>1</b>	<b>9/5</b>	<b>Lake Selmac ICP</b>		<b>Lake Selmac ICP</b>
<b>2</b>							
<b>3</b>	<b>C-50002 CRW2 Lomakatsi</b>	<b>Braulio Maya</b>	<b>20</b>	<b>9/4</b>	<b>Lake Selmac ICP</b>		<b>Lake Selmac ICP</b>
<b>4</b>							
<b>5</b>	<b>E-50042 ENG3 J3 Contracting</b>	<b>Chris Escudero</b>	<b>3</b>	<b>9/6</b>	<b>Lake Selmac ICP</b>		<b>Lake Selmac ICP</b>
<b>6</b>	<b>E-50049 ENG6 Sundance Fire</b>	<b>Dean Norton</b>	<b>3</b>	<b>9/5</b>	<b>Lake Selmac ICP</b>		<b>Lake Selmac ICP</b>
<b>7</b>							
<b>8</b>	<b>E-50005 WTS2 Rogue Basin Fire</b>	<b>Matthew Jordan</b>	<b>1</b>	<b>9/5</b>	<b>Lake Selmac ICP</b>		<b>Lake Selmac ICP</b>
<b>9</b>	<b>E-50036 WTS2 Lavenbarg</b>	<b>Dan Lavenbarg</b>	<b>1</b>	<b>9/5</b>	<b>Lake Selmac ICP</b>		<b>Lake Selmac ICP</b>
<b>10</b>	<b>E-50035 WTS2 Double R&amp;C</b>	<b>Tate Harron</b>	<b>1</b>	<b>9/5</b>	<b>Lake Selmac ICP</b>		<b>Lake Selmac ICP</b>
<b>11</b>	<b>E-50039 DZR2 Barry Brown</b>	<b>Ed Machuse</b>	<b>1</b>	<b>9/5</b>	<b>Lake Selmac ICP</b>		<b>Lake Selmac ICP</b>
<b>12</b>							
<b>13</b>	<b>L/L Task Force South</b>						
<b>14</b>	<b>**E-256 ENG5</b>	<b>Branden McCoy</b>	<b>3</b>	<b>9/4</b>	<b>Lake Selmac ICP</b>		<b>Lake Selmac ICP</b>
<b>15</b>	<b>**E-253 ENG6</b>	<b>Rick Sisson</b>	<b>3</b>	<b>9/4</b>	<b>Lake Selmac ICP</b>		<b>Lake Selmac ICP</b>
<b>16</b>	<b>**E-139 ENG6</b>	<b>David Melendez</b>	<b>3</b>	<b>9/4</b>	<b>Lake Selmac ICP</b>		<b>Lake Selmac ICP</b>
<b>17</b>	<b>**E-255 ENG5</b>	<b>Nick Miller</b>	<b>3</b>	<b>9/4</b>	<b>Lake Selmac ICP</b>		<b>Lake Selmac ICP</b>
<b>18</b>	<b>**E-252 ENG5</b>	<b>Brooke Hogrefe</b>	<b>3</b>	<b>9/4</b>	<b>Lake Selmac ICP</b>		<b>Lake Selmac ICP</b>
<b>19</b>							
<b>20</b>	<b>OSFM Task Force 35</b>	<b>Mike Berger</b>	<b>13</b>	<b>8/26</b>	<b>Lake Selmac ICP</b>		<b>Lake Selmac ICP</b>
<b>21</b>							
<b>22</b>	<b>O-50023 EMT 3</b>	<b>Trevor Brant</b>	<b>1</b>	<b>9/5</b>	<b>Lake Selmac ICP</b>		<b>Lake Selmac ICP</b>
<b>23</b>							
		<b>Meal count</b>	<b>60</b>				
7. Control Operations: <b>Task:</b> Prep line and structures from inspection station to Arrowhead. <b>Purpose:</b> Minimize fire impacts to private residences in the fire area. <b>End state:</b> Area to be protected is prepped and secured.							
8. Special Instructions: **Indicates IA Resources.							
9. Division/Group Communication Summary							
<b>See Communications Plan</b>							
Prepared by (Resource Unit Ldr) <i>Meredith Butcher/Carolyn Zanotto</i>			Approved by (Planning Sect. Ch.) <i>Aileen Nichols</i>			Date <b>08/25/2023</b>	Time <b>2000</b>

<b>DIVISION ASSIGNMENT LIST</b>				1. Branch		2. Group <b>Structure East</b>	
3. Incident Name <b>Smith River Complex North</b>				4. Operational Period Date: <b>08/26/2023</b> Time: <b>0600-2200</b>			
5. Operations Personnel							
Operations Chief		<b>John Spencer Jesse Stone - t</b>		Group Supervisor		<b>Miranda Stuart Billy Turner - t</b>	
Safety Officer		<b>Ray Hershey</b>		Air Attack			
6. Resources Assigned this Period							
Strike Team/Task Force/Resource Designator		Leader	# Persons	LWD	Drop Off PT./Time		Pick Up PT./Time
<b>1</b>	<b>O-50150 TFLD</b>	<b>Aaron Bruning</b>	<b>1</b>	<b>9/8</b>	<b>Lake Selmac ICP</b>		<b>Lake Selmac ICP</b>
<b>2</b>							
<b>3</b>	<b>C-50005 CRW2 Lava River</b>	<b>Roberto Ceja</b>	<b>20</b>	<b>9/7</b>	<b>Lake Selmac ICP</b>		<b>Lake Selmac ICP</b>
<b>4</b>	<b>C-50024 CRW2 Big Bark</b>	<b>TJ Hiner</b>	<b>20</b>	<b>9/8</b>	<b>Lake Selmac ICP</b>		<b>Lake Selmac ICP</b>
<b>5</b>	<b>C-62 CRW2 Alliance</b>		<b>20</b>	<b>9/7</b>	<b>Lake Selmac ICP</b>		<b>Lake Selmac ICP</b>
<b>6</b>							
<b>7</b>	<b>E-50041 ENG3 Allied Water Service</b>	<b>Matthew</b>	<b>3</b>	<b>9/5</b>	<b>Lake Selmac ICP</b>		<b>Lake Selmac ICP</b>
<b>8</b>	<b>E-50094 ENG3 Grayback Forestry</b>	<b>Stephen Jones</b>	<b>3</b>	<b>9/6</b>	<b>Lake Selmac ICP</b>		<b>Lake Selmac ICP</b>
<b>9</b>	<b>E-50045 ENG6 Grande Ronde Tribe</b>	<b>Waylon Rich</b>	<b>3</b>	<b>9/5</b>	<b>Lake Selmac ICP</b>		<b>Lake Selmac ICP</b>
<b>10</b>	<b>E-50051 ENG6 Woodland Hills FD</b>	<b>Lance Wollebaek</b>	<b>3</b>	<b>9/5</b>	<b>Lake Selmac ICP</b>		<b>Lake Selmac ICP</b>
<b>11</b>							
<b>12</b>							
<b>13</b>							
<b>14</b>							
<b>15</b>	<b>TASK FORCE 1</b>						
<b>16</b>	<b>E-408 ENG4</b>	<b>Mike Misek</b>	<b>3</b>	<b>8/29</b>	<b>Lake Selmac ICP</b>		<b>Lake Selmac ICP</b>
<b>17</b>	<b>E-403 ENG6</b>	<b>David Bryant</b>	<b>3</b>	<b>8/26</b>	<b>Lake Selmac ICP</b>		<b>Lake Selmac ICP</b>
<b>18</b>	<b>E-279 WTS2 Darrah Logging 4</b>	<b>Bob Cretton</b>	<b>1</b>	<b>8/30</b>	<b>Lake Selmac ICP</b>		<b>Lake Selmac ICP</b>
<b>19</b>							
<b>20</b>							
<b>21</b>	<b>O-50027 Medic 6</b>	<b>Alex Vera</b>	<b>1</b>	<b>9/5</b>	<b>Lake Selmac ICP</b>		<b>Lake Selmac ICP</b>
<b>22</b>							
		<b>Meal count</b>	<b>81</b>				
7. Control Operations: <b>Task:</b> Assess and prep east of the Hwy 199 corridor and structures in Div K. <b>Purpose:</b> Minimize fire impacts to private residences in the fire area. <b>End state:</b> Area to be protected is prepped and secured.							
8. Special Instructions:							
9. Division/Group Communication Summary <b>See Communications Plan</b>							
Prepared by (Resource Unit Ldr) <i>Meredith Butcher/Carolyn Zanotto</i>			Approved by (Planning Sect. Ch.) <i>Aileen Nichols</i>			Date <b>08/25/2023</b>	Time <b>2000</b>

<b>DIVISION ASSIGNMENT LIST</b>				1. Branch		2. Group <b>Contingency West</b>	
3. Incident Name <b>Smith River Complex North</b>				4. Operational Period Date: <b>08/26/2023</b> Time: <b>0600-2200</b>			
5. Operations Personnel							
Operations Chief		<b>John Spencer Jesse Stone - t</b>		Group Supervisor		<b>Derreck Johnson</b>	
Safety Officer		<b>Ray Hershey</b>		Air Attack			
6. Resources Assigned this Period							
Strike Team/Task Force/Resource Designator		Leader	# Persons	LWD	Drop Off PT./Time		Pick Up PT./Time
<b>1</b>	<b>O-60001TFLD</b>	<b>Tarilton Beall</b>	<b>1</b>	<b>9/5</b>	<b>Lake Selmac ICP</b>		<b>Lake Selmac ICP</b>
<b>2</b>	<b>O-60002 TFLD</b>	<b>Doug Thackery</b>	<b>1</b>	<b>9/5</b>	<b>Lake Selmac ICP</b>		<b>Lake Selmac ICP</b>
<b>3</b>	<b>O-60003 HEQB</b>	<b>Hunter Stratton</b>	<b>1</b>	<b>9/5</b>	<b>Lake Selmac ICP</b>		<b>Lake Selmac ICP</b>
<b>4</b>	<b>O-60004 HEQB</b>	<b>Travis Wyndearo</b>	<b>1</b>	<b>9/5</b>	<b>Lake Selmac ICP</b>		<b>Lake Selmac ICP</b>
<b>5</b>	<b>O-60005 HEQB</b>	<b>Ivan Carrier</b>	<b>1</b>	<b>9/5</b>	<b>Lake Selmac ICP</b>		<b>Lake Selmac ICP</b>
<b>6</b>	<b>O-60006 HEQB – t</b>	<b>George Sheppard</b>	<b>1</b>	<b>9/5</b>	<b>Lake Selmac ICP</b>		<b>Lake Selmac ICP</b>
<b>7</b>	<b>O-60009 SFAL Crow Cutting</b>	<b>William Crow</b>	<b>1</b>	<b>9/5</b>	<b>Lake Selmac ICP</b>		<b>Lake Selmac ICP</b>
<b>8</b>	<b>O-60010 FMOD Arrows Timber &amp; Fire</b>	<b>Tom O'Donnel</b>	<b>2</b>	<b>9/5</b>	<b>Lake Selmac ICP</b>		<b>Lake Selmac ICP</b>
<b>9</b>							
<b>10</b>	<b>C-60000 CRW2 Grayback Forestry</b>	<b>Dan Siller</b>	<b>20</b>	<b>9/7</b>	<b>Lake Selmac ICP</b>		<b>Lake Selmac ICP</b>
<b>11</b>							
<b>12</b>	<b>E-60000 MBM2 Parker Excavation</b>	<b>Ryan Lehman</b>	<b>2</b>	<b>9/5</b>	<b>Lake Selmac ICP</b>		<b>Lake Selmac ICP</b>
<b>13</b>	<b>E-60001 MBM2 Parker Excavation</b>	<b>Jeff Moody</b>	<b>2</b>	<b>9/5</b>	<b>Lake Selmac ICP</b>		<b>Lake Selmac ICP</b>
<b>14</b>	<b>E-60002 DZR1 Hyde Trucking</b>	<b>Luke Hyde</b>	<b>2</b>	<b>9/5</b>	<b>Lake Selmac ICP</b>		<b>Lake Selmac ICP</b>
<b>15</b>	<b>E-60003 DZR1 Ira IV Excavating</b>	<b>Ed Podoll</b>	<b>2</b>	<b>9/5</b>	<b>Lake Selmac ICP</b>		<b>Lake Selmac ICP</b>
<b>16</b>	<b>E-60004 DZR1 Gregg Hyde Logging</b>	<b>Gregg Hyde</b>	<b>2</b>	<b>9/5</b>	<b>Lake Selmac ICP</b>		<b>Lake Selmac ICP</b>
<b>17</b>	<b>E-60010 DZR1 Pacific Ridgeline</b>		<b>2</b>	<b>9/5</b>	<b>Lake Selmac ICP</b>		<b>Lake Selmac ICP</b>
<b>18</b>	<b>E-60005 DZR3 Arrows Timber &amp; Fire</b>	<b>Dan Syfert</b>	<b>2</b>	<b>9/5</b>	<b>Lake Selmac ICP</b>		<b>Lake Selmac ICP</b>
<b>19</b>	<b>E-60006 DZR3 Ira IV Excavating</b>	<b>Ed Podoll III</b>	<b>2</b>	<b>9/5</b>	<b>Lake Selmac ICP</b>		<b>Lake Selmac ICP</b>
<b>20</b>							
<b>21</b>							
<b>22</b>							
		<b>Meal count</b>	<b>45</b>				
7. Control Operations: <b>Task:</b> Scout and establish control lines. <b>Purpose:</b> Keep fire south of control lines and west of 4402 Rd. <b>End state:</b> Minimize impacts to communities and infrastructure.							
8. Special Instructions: UTVs E-60007, E-60008, E-60009 Grayback Forestry. REAFs Porter, Hughes, Saunders, Galuchie, Bucher and Mero will contact DIVS upon entering and exiting their respective divisions.							
9. Division/Group Communication Summary							
<b>See Communications Plan</b>							
Prepared by (Resource Unit Ldr) <i>Meredith Butcher/Carolyn Zanotto</i>			Approved by (Planning Sect. Ch.) <i>Aileen Nichols</i>			Date <b>08/25/2023</b>	Time <b>2000</b>

<b>DIVISION ASSIGNMENT LIST</b>			1. Branch		2. Group <b>Contingency East</b>	
3. Incident Name <b>Smith River Complex North</b>			4. Operational Period Date: <b>08/26/2023</b> Time: <b>0600-2200</b>			
5. Operations Personnel						
Operations Chief		<b>John Spencer Jesse Stone - t</b>		Group Supervisor		<b>Randy Anderson Marc Johnson - t</b>
Safety Officer		<b>Ray Hershey</b>		Air Attack		
6. Resources Assigned this Period						
Strike Team/Task Force/Resource Designator		Leader	# Persons	LWD	Drop Off PT./Time	Pick Up PT./Time
1						
2						
3						
4						
5						
6						
7						
8						
9						
10						
11						
12						
13						
14						
15						
16						
17						
18						
19						
20						
21						
22						
		<b>Meal count</b>				
7. Control Operations: <b>Task:</b> Scout for contingency line southeast of Hwy 199. <b>Purpose:</b> Validate alternate and contingency PACE lines. <b>End state:</b> PACE lines have been prepped to protect the communities to the north and northeast (Takilma and Sunstar).						
8. Special Instructions:						
9. Division/Group Communication Summary <b>See Communications Plan</b>						
Prepared by (Resource Unit Ldr) <i>Meredith Butcher/Carolyn Zanotto</i>			Approved by (Planning Sect. Ch.) <i>Aileen Nichols</i>		Date <b>08/25/2023</b>	Time <b>2000</b>

<b>DIVISION ASSIGNMENT LIST</b>			1. Branch		2. Division <b>Staging</b>	
3. Incident Name <b>Smith River Complex North</b>			4. Operational Period Date: <b>08/26/2023</b> Time: <b>0600-2200</b>			
5. Operations Personnel						
Operations Chief		<b>John Spencer Jesse Stone - t</b>		Division Supervisor		
Safety Officer		<b>Ray Hershey</b>		Air Attack		
6. Resources Assigned this Period						
Strike Team/Task Force/Resource Designator		Leader	# Persons	LWD	Drop Off PT./Time	Pick Up PT./Time
1	<b>E-50113 WTS2 Hull Transportation</b>	<b>Brett Hull</b>	<b>1</b>	<b>9/6</b>	<b>Lake Selmac ICP</b>	<b>Lake Selmac ICP</b>
2						
3	<b>E-50093 DZR2 Lone Pine</b>	<b>Terry Wimmer</b>	<b>2</b>	<b>9/8</b>	<b>Lake Selmac ICP</b>	<b>Lake Selmac ICP</b>
4						
5	<b>E-50068 FEL1 Inland Timber Co</b>	<b>Shane Dougherty</b>	<b>2</b>	<b>9/6</b>	<b>Lake Selmac ICP</b>	<b>Lake Selmac ICP</b>
6	<b>E-50063 Processor Gibson &amp; Son</b>	<b>Andrew Jager</b>	<b>2</b>	<b>9/8</b>	<b>Lake Selmac ICP</b>	<b>Lake Selmac ICP</b>
7						
8	<b>E-50033 MBM1 Cate Land Inc.</b>	<b>E.C. Cates</b>	<b>2</b>	<b>9/7</b>	<b>Lake Selmac ICP</b>	<b>Lake Selmac ICP</b>
9						
10						
11						
12						
13						
14						
15						
16						
17						
18						
19						
20						
21						
22						
		<b>Meal count</b>	<b>9</b>			
7. Control Operations: <b>Task:</b> <b>Purpose:</b> <b>End state:</b>						
8. Special Instructions:						
9. Division/Group Communication Summary						
<b>See Communications Plan</b>						
Prepared by (Resource Unit Ldr) <i>Meredith Butcher/Carolyn Zanotto</i>		Approved by (Planning Sect. Ch.) <i>Aileen Nichols</i>		Date <b>08/25/2023</b>	Time <b>2000</b>	



<b>DIVISION ASSIGNMENT LIST</b>			1. Branch		2. Division <b>Night North</b>	
3. Incident Name <b>Smith River Complex North</b>			4. Operational Period Date: <b>08/26/2023 – 8/27/2023</b> Time: <b>1700-0900</b>			
5. Operations Personnel						
Operations Chief		<b>Larry Pingle</b>		Division Supervisor		
Safety Officer		<b>Ray Hershey</b>		Air Attack		
6. Resources Assigned this Period						
Strike Team/Task Force/Resource Designator		Leader	# Persons	LWD	Drop Off PT./Time	Pick Up PT./Time
<b>1</b>	<b>O-50118 TFLD</b>	<b>Brandon Rea</b>	<b>1</b>	<b>9/8</b>	<b>Lake Selmac ICP</b>	<b>Lake Selmac ICP</b>
<b>2</b>						
<b>3</b>	<b>C-50025 CRW1 Lakeview IHC</b>	<b>Sam Johnson</b>	<b>21</b>	<b>9/8</b>	<b>Lake Selmac ICP</b>	<b>Lake Selmac ICP</b>
<b>4</b>						
<b>5</b>	<b>E-50047 ENG3 J3</b>	<b>Matt Wilson</b>	<b>3</b>	<b>9/7</b>	<b>Lake Selmac ICP</b>	<b>Lake Selmac ICP</b>
<b>6</b>	<b>E-50048 ENG6 Prescription Pyro</b>	<b>Jim Wheeler</b>	<b>3</b>	<b>9/7</b>	<b>Lake Selmac ICP</b>	<b>Lake Selmac ICP</b>
<b>7</b>	<b>E-50095 ENG6 3B's</b>	<b>Sharon Tanguay</b>	<b>3</b>	<b>9/7</b>	<b>Lake Selmac ICP</b>	<b>Lake Selmac ICP</b>
<b>8</b>	<b>E-50096 ENG6 Knight Fire</b>	<b>Chris Carswen</b>	<b>3</b>	<b>9/7</b>	<b>Lake Selmac ICP</b>	<b>Lake Selmac ICP</b>
<b>9</b>	<b>E-50101 ENG6 PatRick</b>	<b>Josh Northrup</b>	<b>3</b>	<b>9/7</b>	<b>Lake Selmac ICP</b>	<b>Lake Selmac ICP</b>
<b>10</b>	<b>E-373 ENG3</b>		<b>3</b>		<b>Lake Selmac ICP</b>	<b>Lake Selmac ICP</b>
<b>11</b>	<b>E-374 ENG3</b>	<b>Truett Chico</b>	<b>3</b>		<b>Lake Selmac ICP</b>	<b>Lake Selmac ICP</b>
<b>12</b>	<b>E-396 ENG4 Rattlesnake</b>	<b>Fabian Bremerman</b>	<b>3</b>		<b>Lake Selmac ICP</b>	<b>Lake Selmac ICP</b>
<b>13</b>	<b>E-264 ENG4</b>		<b>3</b>		<b>Lake Selmac ICP</b>	<b>Lake Selmac ICP</b>
<b>14</b>	<b>E-157 ENG4</b>	<b>Scott Leffler</b>	<b>3</b>		<b>Lake Selmac ICP</b>	<b>Lake Selmac ICP</b>
<b>15</b>	<b>E-247 ENG6</b>	<b>Jessica Wilcox</b>	<b>3</b>		<b>Lake Selmac ICP</b>	<b>Lake Selmac ICP</b>
<b>16</b>	<b>E-50092 DZR2 Lone Pine Equipment</b>	<b>Rusty Lamar</b>	<b>2</b>	<b>9/8</b>	<b>Lake Selmac ICP</b>	<b>Lake Selmac ICP</b>
<b>17</b>						
<b>18</b>	<b>OSFM Task Force 36</b>	<b>Zach Leigh</b>	<b>13</b>	<b>8/26</b>	<b>Lake Selmac ICP</b>	<b>Lake Selmac ICP</b>
<b>19</b>						
<b>20</b>	<b>E-50086 AMBO 3</b>	<b>Darren Hearn</b>	<b>2</b>	<b>9/8</b>	<b>Lake Selmac ICP</b>	<b>Lake Selmac ICP</b>
<b>21</b>	<b>E-50098 Medic 23</b>	<b>Michael Weig</b>	<b>2</b>	<b>9/8</b>	<b>Lake Selmac ICP</b>	<b>Lake Selmac ICP</b>
<b>22</b>	<b>E-50097 Medic 22</b>	<b>Chris Hardesty</b>	<b>2</b>	<b>9/8</b>	<b>Lake Selmac ICP</b>	<b>Lake Selmac ICP</b>
		<b>Meal count</b>	<b>76</b>			
7. Control Operations: <b>Task:</b> Structure protection. <b>Purpose:</b> Protect structures. <b>End state:</b> Impacts have been minimized to communities and infrastructure.						
8. Special Instructions:						
9. Division/Group Communication Summary <b>See Communications Plan</b>						
Prepared by (Resource Unit Ldr) <i>Meredith Butcher/Carolyn Zanutto</i>		Approved by (Planning Sect. Ch.) <i>Aileen Nichols</i>		Date <b>08/25/2023</b>	Time <b>2000</b>	

## AIR OPERATIONS SUMMARY ICS-220

<b>Incident Name / Number</b>	SMITH RIVER COMPLEX - CA-SRF-000968
<b>Sunrise</b>	6:34
<b>Startup</b>	7:04
<b>Cutoff</b>	19:28
<b>Sunset</b>	7:58:00 PM

**General Remarks, Safety Notes, Hazards, Air Operations Special Equipment, etc.**  
 TRACK ALL DIPSITE LOCATIONS / NUMBER OF DIPS / GALLONS TAKEN.  
 TRACK ALL DROP LOCATIONS / NUMBER OF DROPS / GALLONS DROPPED.  
 ALL GPS DATA TO BE COLLECTED IN DEGREES, MINUTES, DECIMAL MINUTES FORMAT.  
 AVOID Aerial Application of Retardant / Foam / Agent within 300' of Waterways, Bodies of Water, etc.  
 If Retardant / Foam / Agent is Dropped Within These Areas Immediately Notify the AOBDD and Provide the Following Information: Lat / Long, Estimated Number of Gallons and a Map Detailing The Area. Watch for Powerlines. Caution when operating in non-TFR areas.

Your Sunrise and Sunset info has not been updated for the current Op period Update

Frequencies	TX	Tone	RX	Tone	AM / FM
Command-South	168.0750	(T3) 131.8	170.4250	(T3) 131.8	FM
Command-North Bowlan	162.6125	(T31) 186.2	170.5000	(T17) 67.0	FM
Command-North Fiddler	162.6125	(T30) 179.9	170.5000	(T17) 67.0	FM
AIR / GROUND - TACTICAL	169.4875	0.0000	169.4875	0.0000	FM
AIR/AIR ROTARY WING	123.7250	0.0000	123.7250	0.0000	AM
TFR	126.0750	0.0000	126.0750	0.0000	AM
AIR TACTICS	173.7000	0.0000	173.7000	0.0000	FM
AIR/GROUND COMMAND	173.8500	0.0000	173.8500	0.0000	AM
VMED 29-MEDICAL North	155.3475	156.7	155.3475	156.7	AM
TOLC	168.1375	0.0000	168.1375	0.0000	FM
CALCORD - MEDICAL South	156.0750	156.7 (6)	156.0750	156.7 (6)	FM
AIRGUARD - Emergency Only	168.6250	110.9 (1)	168.6250	0.0000	FM

### HELICOPTERS ( Use page 2 if Needed )

FAA #	Type	Make/Model	Helibase	Avail	Start	Remarks
HT 16FH	1	UH-60	Cave	0800	0830	LL BUCKET
HB 534VG	1	UH-60	Cave	0800	0830	LL BUCKET
HB 391SH	1	UH-60	Cave	0800	0830	LL BUCKET
HB 699RH	1	KMAX	Cave	0800	0830	LL BUCKET
H-527	2	Bell 212	Cave	0800	0830	LL BUCKET
UR31	3	Alta X	Gasquet	TBD	TBD	IR/PSD
UR33	3	Alta X	Gasquet	TBD	TBD	IR/PSD
SOUTH MEDICAL A/C						
TBD	3	MH-65	Humboldt			Coast Guard
H-902	2	UH1	Kneeland			Cal Fire

### FIXED WING ( Use Page 2 if Needed )

FAA #	Type	Make/Model	Base	Avail	Start	Remarks
N-7MZ	1	C-501	RDD	0800	0830	ATGS (RDD)

Time Prepared	Date Prepared	Prepared By
1900	Friday, August 25, 2023	John Crotty/Steve Markason
<b>Shutdown</b> 20:28	<b>Operational Period - Date</b> Saturday August 26, 2023	<b>Operational Period - Time</b> 0700-2100

Helibase Information	
Name	Gasquet
Latitude	41 50.667
Longitude	123 59.455
Name	Cave Junction
Latitude	42 06.250
Longitude	123 40.916 (use page 2 if needed)

TFR Information	
Request #	NM
Rectangle	8,000 MSL
Altitude:	Multi Lat
Centerpoint:	Multi Long
NOTAMS:	3/9897
Frequency	126.0750
<a href="http://tfr.faa.gov/tfr2/list.html">http://tfr.faa.gov/tfr2/list.html</a>	

Rescue Ship Information	
<b>Day Hoist</b>	<b>Night Hoist</b>
Name	CHP H14
Phone	SAC METRO 1
Make/Model	Astar B3
Location	Redding
	Bell 212
	Benton

Request #	Name	Phone	Request Procedure for These Aircraft:
	John Crotty	805-440-6186	See Below for OR Aircraft
	Curt Warner	805-478-1231	See Medical Plan For Additional Info
	George Leite (Cave)	360-581-8428	
	Natalie Bench (Crescent)	928-358-0963	
	Casey Jones	559-696-3878	Antonio Jimenez 530-310-5797
	Rick Thompson	970-209-6989	Matt Oakleaf 208-995-6042
	Lucas Rhea	702-521-8406	
	Steve Ramaekers	208-473-8708	
	Zach Freundlich	508-380-1904	
	Steve Markason	307-690-5185	
	Bert Smith (T)	406-660-7371	
	Cave Helibase	208-891-6878	ihvb2023@gmail.com

FAA #	Type	Make/Model	Helibase	Avail	Start	Remarks
HB 625CK	1	S-61N	Merlin	0800	0830	LL BUCKET
HT 917	1	S-61	Merlin	0800	0830	LL TANK
H-18BH	3	Bell 407	Cave	0800	0830	HLCO
H-132BH	3	AS-350B3	Cave	0800	0830	PAX/RECON/LL/PSD
H-942AE	3	AS-350B3E	Crescent	0800	0830	PAX/RECON/LL/PSD
UR32	3	Alta X/DJI	Cave	TBD	TBD	IR/PSD
UR34	3	Alta X/DJI	Cave	TBD	TBD	IR/PSD
UR35	3	DJI M600	Cave	TBD	TBD	IR/PSD
NORTH MEDICAL A/C						
20695	1	HH-60M	Roseburg			OR National Guard
H-38HX	3	AS-250B3	Sun River			Shorthaul - 187 nm

# INCIDENT RADIO COMMUNICATIONS PLAN (ICS 205)

## Controlled Unclassified Information//Basic

1. Incident Name:		2. Date/Time Prepared:		3. Operational Period:						
SMITH RIVER COMPLEX NORTH		Date: 08/25/2023 Time: 18:00		Date/Time From: 08/26/2023 0700 Date/Time To: 08/27/2023 0700						
<b>4. Basic Radio Channel Use:</b>										
Zone Group	Ch #	Function	Channel Name/Trunked Radio System Talkgroup	Assignment	RX Freq	RX Tone/NAC	TX Freq	TX Tone/NAC	Mode (A, D, or M)	Remarks
	1	TACTICAL	TAC 1	UNASSIGNED	168.0500	192.8	168.0500	192.8	A	UNASSIGNED
	2	TACTICAL	TAC 2	DIV I	168.2000	192.8	168.2000	192.8	A	
	3	TACTICAL	TAC 3	DIV K	168.6000	192.8	168.6000	192.8	A	
	4	TACTICAL	TAC 4	STRUCTURE E	166.7250	192.8	166.7250	192.8	A	
	5	TACTICAL	TAC 5	DIV H	166.7750	192.8	166.7750	192.8	A	
	6	TACTICAL	TAC 6	STRUCTURE W	168.2500	192.8	168.2500	192.8	A	
	7	CMD	CMD 7	ALL DIV	172.9875	162.2	165.0500	162.2	A	BOLAN MOUNTAIN (E)
	8	CMD	CMD 8	ALL DIV	170.3000	162.2	164.0000	162.2	A	FIDDLER MOUNTAIN (N)
	9	CMD	CMD 9	ALL DIV	169.0750	162.2	162.4125	162.2	A	MONKEY CR RIDGE (S)
	10	TACTICAL	VTAC 11	UNASSIGNED	151.1375	156.7	151.1375	156.7	A	UNASSIGNED
	11	TACTICAL	NIFC T1	DIV D	168.0500	131.8	168.0500	131.8	A	
	12	TACTICAL	NIFC T4	DIV MM	166.7250	131.8	166.7250	131.8	A	
	13	AIR TO GROUND	A/G CMD	ALL DIVS	173.8500	000.0	173.8500	000.0	A	BRANCH AND DIVISION USE
	14	AIR TO GROUND	A/G TAC	ALL DIVS	169.4875	000.0	169.4875	000.0	A	AIR TO GROUND TACTICAL
	15	AIR MEDICAL	VMED 29	ALL DIVS	155.3475	156.7	155.3475	156.7	A	EMS AIR COORDINATION
	16	AIR TO GROUND	AIRGUARD	ALL DIVS	168.6250	000.0	168.6250	110.9	A	EMERGENCY AIRCRAFT CONTACT
<b>5. Special Instructions:</b>										
<b>6. Prepared By COML</b>						Name: Bruce Hanna		Signature: /s/ Bruce Hanna		
<b>ICS 205</b>						<b>IAP Page</b>		Date/Time: 8/25/2023 18:00		

# INCIDENT RADIO COMMUNICATIONS PLAN (ICS 205)

## Controlled Unclassified Information//Basic

<b>1. Incident Name:</b>	<b>2. Date/Time Prepared:</b>	<b>3. Operational Period:</b>
SMITH RIVER COMPLEX NORTH INITIAL ATTACK ZONE	Date: 08/25/2023 Time: 16:35	Date/Time From: 08/26/23 07:00 Date/Time To: 08/27/23 07:00

4. Basic Radio Channel Use:										
Zone Group	Ch #	Function	Channel Name/Trunked Radio System Talkgroup	Assignment	RX Freq	RX Tone/NAC	TX Freq	TX Tone/NAC	Mode (A, D, or M)	Remarks
IA	1	CMD	MONKEY	IA	172.3750	000.0	164.1750	110.9	A	6 RIVERS MONKEY RIDGE
IA	2	CMD	ONION	IA	171.3875	67.0	164.9625	173.8	A	RSF ONION
IA	3	CMD	FIDDLER	IA	171.3875	67.0	164.9625	179.9	A	RSF FIDDLER
IA	4	CMD	BOLAN	IA	171.3875	67.0	164.9625	186.2	A	RSF BOLAN
IA	5	CMD	MT EMILY	IA	170.3750	67.0	164.1250	118.8	A	RSF GOLD BEACH (EMILY)
IA	6	CMD	ODF SEXTON	IA	151.1450	000.0	159.2850	179.9	A	ODF SEXTON
IA	7	CMD	ODF GRAY BK	IA	151.1450	000.0	159.2850	151.4	A	ODF GREY BACK
IA	8	TAC	ODF RED	IA	151.3400	000.0	151.3400	156.7	A	ODF RED
IA	9	A/G	ODF WHITE	IA	151.3100	000.0	151.3100	156.7	A	ODF WHITE A/G
IA	10	TAC	ODF RVT	IA	159.2400	000.0	159.2400	156.7	A	ODF RVT
IA	11	A/G	FS A/G51	IA	168.3125	000.0	168.3125	000.0	A	A/G 51
IA	12	A/G	FS A/G62	IA	169.3625	000.0	169.3625	000.0	A	A/G 62
IA	13	A/G	A/G CMD	IA	173.8500	000.0	173.8500	000.0	A	
IA	14	A/G	A/G TAC	IA	169.4875	000.0	169.4875	000.0	A	
IA	15	A/G	VMED 29	IA	155.3475	156.7	155.3475	156.7	A	EMS AIR COORDINATION
IA	16	A/G	CAL CORD	IA	156.0750	156.7	156.0750	156.7	A	EMS AIR CORD

<b>5. Special Instructions:</b>	
<b>6. Prepared By</b> (Communications Unit Leader)	Name: Bruce Hanna
Signature: /s/ Bruce Hanna	Date/Time: 8/25/2023 18:35
<b>ICS 205</b>	<b>IAP Page</b>

# ICS 205 - INCIDENT RADIO COMMUNICATIONS PLAN

CONTROLLED UNCLASSIFIED  
INFORMATION//BASIC

1. Incident Name: SMITH RIVER COMPLEX - SOUTH Incident Channels		2. Date/Time Prepared Date: 08/25/2023 Time: 1930		3. Operational Period: Date From: 08/26/23 Time From: 0700		Date To: 08/27/23 Time To: 0700			
4. Communications									
Ch#	Function	Name	Assigned To	Rx Freq	Rx Tone	Tx Freq	Tx Tone	Mode	Notes
1	COMMAND	NIFC C3	ALL DIVS	170.4250	(T3) 131.8	168.0750	(T3) 131.8	A	CAMP 6
2	COMMAND	NIFC C34	ALL DIVS	173.9750	(T3) 131.8	164.8625	(T3) 131.8	A	MONKEY RIDGE
3	COMMAND	NIFC C35	ALL DIVS	173.8625	(T3) 131.8	163.8250	(T3) 131.8	A	SHIP MTN LOOKOUT
4	COMMAND	NIFC C48	ALL DIVS	165.4625	(T3) 131.8	162.1750	(T3) 131.8	A	HIGH DIVIDE
5	FUTURE	NIFC C55	NOT IN USE	173.8375	(T3) 131.8	165.5125	(T3) 131.8	A	FUTURE USE
6	TACTICAL	NIFC T1	D, NIGHT B/D	168.0500	(T3) 131.8	168.0500	(T3) 131.8	A	
7	TACTICAL	NIFC T3	A	168.6000	(T3) 131.8	168.6000	(T3) 131.8	A	
8	TACTICAL	NIFC T4	MM, B	166.7250	(T3) 131.8	166.7250	(T3) 131.8	A	
9	TACTICAL	NIFC T5	PP, DIVIDE STR GP	166.7750	(T3) 131.8	166.7750	(T3) 131.8	A	
10	TACTICAL	NIFC T6	SS, VV, CONTINGENCY	168.2500	(T3) 131.8	168.2500	(T3) 131.8	A	
11	TACTICAL	VFIRE 22	YY, NIGHT YY	154.2650	(T6) 156.7	154.2650	(T6) 156.7	A	
12	TACTICAL	VFIRE 24	GASQT/NIGHT STR GP	154.2725	(T6) 156.7	154.2725	(T6) 156.7	A	GASQUET STR GROUP/NIGHT STR GROUP
13	A/G CMD	A/G CMD	ALL DIVS	173.8500	0.0	173.8500	0.0	A	OPS, BRANCH AND DIVISION USE
14	A/G TAC	A/G TAC	ALL DIVS	169.4875	0.0	169.4875	0.0	A	AIR TO GROUND TACTICAL
15	TACTICAL	CALCORD	ALL DIVS	156.0750	(T6) 156.7	156.0750	(T6) 156.7	A	EMS AIR COORDINATION
16	AIRGUARD	AIRGUARD	ALL DIVS	168.6250	0.0	168.6250	(T1) 110.9	A	EMERGENCY
17									
18									
19									
20	AIRGUARD	AIRGUARD	ALL DIVS	168.6250	0.0	168.6250	(T1) 110.9	A	EMERGENCY
5. Special Instructions									
CURRENT CLONE: SSRC825. COMMAND CHANNELS LINKED. FIND WHICH ONE WORKS BEST IN YOUR OPERATIONAL AREA. SMITH RIVER COMPLEX - SOUTH COMMUNICATIONS PHONE # 760-220-2863									
6. Prepared by (Communications Unit Leader): Name: CHRIS OLIVER COML(t)								Signature: <i>Chris Oliver</i>	
ICS 205 - CONTROLLED UNCLASSIFIED INFORMATION//BASIC								Date/Time: 08/25/23	
								1930	

# ICS 205 - IA ZONE INCIDENT RADIO COMMUNICATIONS PLAN

CONTROLLED UNCLASSIFIED INFORMATION//BASIC

<b>1. Incident Name:</b> SMITH RIVER COMPLEX - SOUTH Page 2	<b>2. Date/Time Prepared</b> Date: 08/25/2023 Time: 1930	<b>3. Operational Period:</b> Date From: 08/26/23 Time From: 0700 Date To: 08/27/23 Time To: 0700
---	--	---

4. Communications									
Ch#	Function	Name	Assigned To	Rx Freq	Rx Tone	Tx Freq	Tx Tone	Mode	Notes
1	FOREST	SRF 12	I/A CMD	172.3750	0.0	164.1750	(T12) 127.3	A	GORDON MOUNTAIN, TONE 12
2	FOREST	SRF 4	I/A CMD	172.3750	0.0	164.1750	(T4) 136.5	A	SHIP MOUNTAIN, TONE 4
3	FOREST	SRF 1	I/A CMD	172.3750	0.0	164.1750	(T1) 110.9	A	MONKEY RIDGE, TONE 1
4	DISPATCH	HUU RPT	DISPATCH	151.2500	(T1) 110.9	159.4050	(T14) 151.4	A	Tx 151.4 T14, Rx 110.9 T1
5	TACTICAL	NIFC T2	I/A TAC	168.2000	0.0	168.2000	0.0	A	NIFC TAC 2
6	TACTICAL	R5 T4	I/A TAC	166.5500	0.0	166.5500	0.0	A	R-5 TAC 4
7	TACTICAL	R5 T5	I/A TAC	167.1125	0.0	167.1125	0.0	A	R-5 TAC 5
8	TACTICAL	R5 PROJ	I/A TAC	168.6625	0.0	168.6625	0.0	A	R5 PROJECT
9	TACTICAL	VTAC 14	I/A TAC	159.4725	(T6) 156.7	159.4725	(T6) 156.7	A	Tx/Rx 156.7 Tone 6
10	TACTICAL	CDF T3	I/A TAC	151.1750	(T16) 192.8	151.1750	(T16) 192.8	A	CDF Tac 3 Tx/Rx 192.8 Tone 16
11	TACTICAL	R5 T6	I/A TAC	168.2375	0.0	168.2375	0.0	A	R-5 TAC 6
12	LOCAL	GASQ>16	LOCAL	154.4150	0.0	154.0100	(T16) 192.8	A	Gasquet VFD Rpt Tx 192.8 Tone 16
13	A/G	AG-43	ALL DIVS	167.6000	0.0	167.6000	0.0	A	AIR TO GROUND PRIMAR
14	A/G	AG-08	ALL DIVS	166.8750	0.0	166.8750	0.0	A	AIR TO GROUND SECONDARY
15	TACTICAL	CALCORD	MEDICAL EVAC	156.0750	(T6) 156.7	156.0750	(T6) 156.7	A	EMS AIR COORDINATION
16	AIRGUARD	AIRGUARD	EMERGENCY	168.6250	0.0	168.6250	(T1) 110.9	A	EMERGENCY
17									
18									
19									
20	AIRGUARD	AIRGUARD	ALL DIVS	168.6250	0.0	168.6250	(T1) 110.9	A	

5. Special Instructions									
CLONE NAME: SSCR25 SMITH RIVER COMPLEX SOUTH IA ZONE									

<b>6. Prepared by (Communications Unit Leader):</b> Name: CHRIS OLIVER COML(t)	Signature: _____
ICS 205 - CONTROLLED UNCLASSIFIED INFORMATION//BASIC	NIMS IAP Date/Time: 08/25/23 1930

**Work and Fatigue in Wildland Firefighting effects your physical and emotional state!**

Wildland Firefighting is arduous work, performed for long shifts in difficult environmental conditions. The work can be dangerous due to the fire and working conditions. Heat, smoke, rolling rocks, falling snags, and other hazards threaten the firefighter. Fatigue can impair performance and decision making, increasing the risk of injury. Prolonged exposure to fatigue, stress, smoke, and poor nutrition has the potential to increase the incidence of upper respiratory illness, but also mental lapses.

The stress response is necessary to prepare an athlete, firefighter or soldier for a maximal effort in a physical challenge, but it can be unhealthy if it occurs too often in the wrong setting.

**Definitions:**

**Fatigue**—A sense of tiredness, either mental or physical, brought on by stress (lack of sleep, physical work, nutritional inadequacies, or mental stresses). Fatigue following work or sleep deprivation is a normal state and can be reversed with adequate recovery or rest.

Fatigued workers perform poorly and behave carelessly, tolerate greater errors, and become inattentive. They display decreased motivation, increased irritability and depression, and low morale. Accumulated fatigue is more persistent, producing a wider array of effects on performance, health, and morale than ordinary fatigue. Accumulated fatigue requires longer recovery periods than ordinary fatigue.

**Correct Nutrition, Hydration and Rest are good coping mechanisms for stress and fatigue. Make use of your down time and rest per the work/rest guidelines.**

Margaret Dietrich, HRSP/TNSP  
 Cell 360-701-3154 or Team13trsp@outlook.com



**LOGISTICS**

<p><b>Lake Selmac ICP</b>  <b>Communications Phone #:</b> 971-245-0253</p>	<p><b>Rough &amp; Ready Supply/Ground Support</b>                  (located across Hwy 199 from Cave Staging)</p>
<p><b>Kitchen Hours</b></p> <ul style="list-style-type: none"> <li>• Breakfast 0530 – 0900</li> <li>• Lunch/Water/ICE available at ICP</li> <li>• Dinner 1730 <b>Swing/Night Shift Only</b></li> <li>• Dinner 1800 – 2200</li> </ul> <p><b>Showers</b></p> <ul style="list-style-type: none"> <li>• Open 0500 – 1200</li> <li>• Open 1400 – 2200</li> </ul> <p><b>Laundry – (located next to showers)</b></p> <ul style="list-style-type: none"> <li>• Open 0500-2200 24hr turnaround</li> </ul>	<p><b>Supply</b></p> <ul style="list-style-type: none"> <li>• Open 0600 – 2100</li> </ul> <p><b>Fuel Tender @ Cave Staging</b></p> <ul style="list-style-type: none"> <li>• Open 0600 – 1000</li> <li>• Open 1500 – 2100</li> </ul>



## Noxious Weeds - Alyssum - Economic Impacts



Noxious weeds have a huge economic impact on Oregon communities. **Oregonians lose an estimated \$125 million a year to just 21 of Oregon's 137 state-listed noxious weeds.** Economic impacts include lost agricultural production, fire damage, control expenses, decreased property values, and increased food and consumer product costs.

In the Illinois Valley, we have the highest priority regional noxious weed called *Alyssum murale*, or yellowtuft, native to Europe. The Illinois Valley is also a hotspot of biodiversity, one of only 36 biodiversity hotspots in the world. This area has the highest amount of rare plant species in all of North America and the rare plants are threatened by the invasive Alyssum.

The Illinois Valley of Oregon has the only infestation in North America of this invasive plant. It has spurred an interagency effort for the last 15 years to treat and remove every single plant. This removal of this plant has totaled nearly \$1,500,000 to date. With your help we can assist with the enormous invasive suppression effort and not spread Alyssum (or any other noxious weeds in our area).



**The Weed Wash has arrived!**

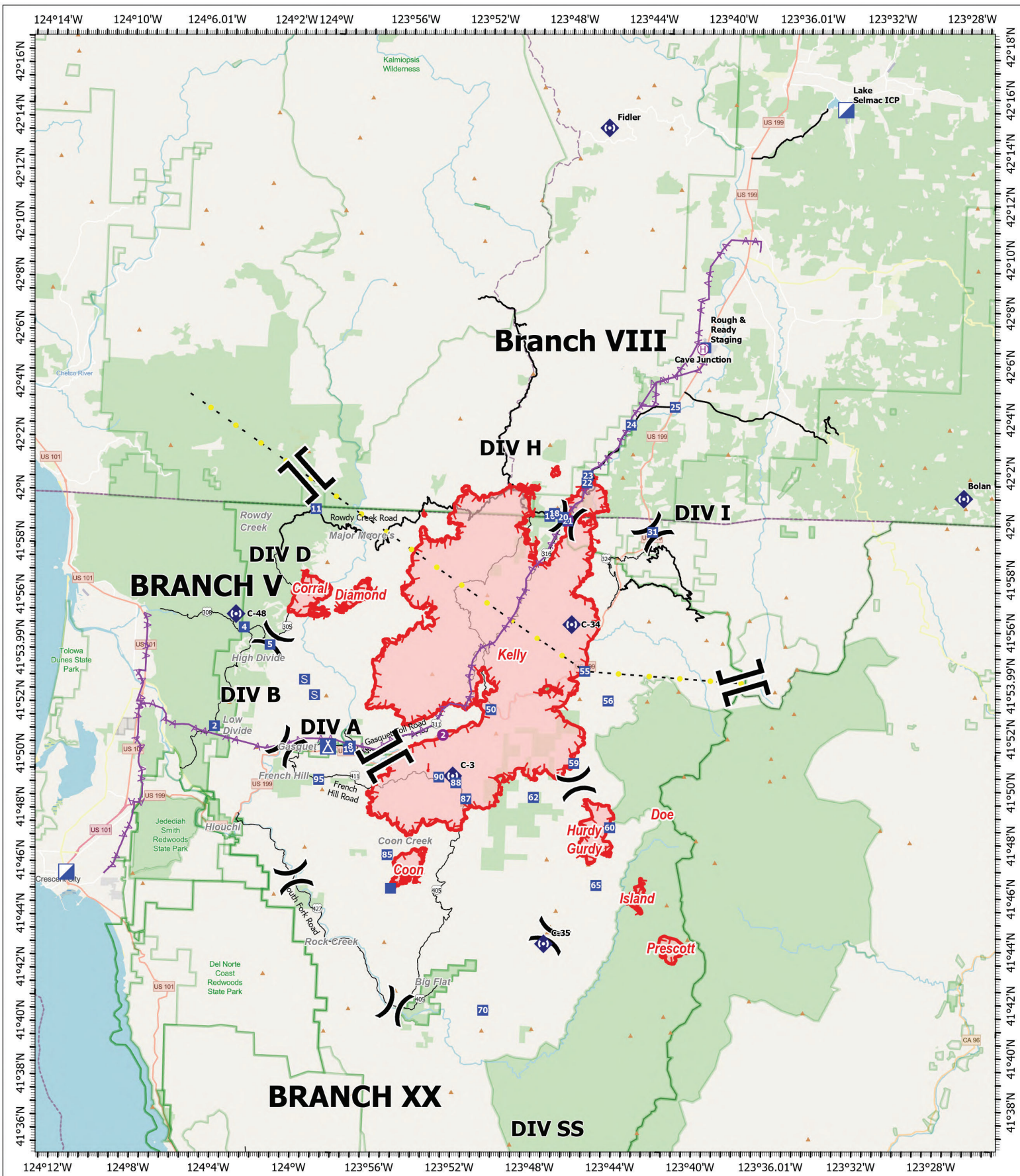
***(Located at Rough and Ready Staging Area, directly off Hwy 199)***

**Prevention is our best tool.**

**Please use the weed wash. Check clothing for seeds.**

**Please don't carry hitchhiker seeds to another division (or home) with you.**





**SMITH RIVER  
COMPLEX  
NORTH**  
CA-SRF-000968  
8/25/2023  
66,505 acres  
IR updated 08/24/2023 @ 1829

- |                  |                         |                                 |
|------------------|-------------------------|---------------------------------|
| ● Label Point    | ■ Incident Command Post | ▭ Uncontained                   |
| ⊕ Helispot       | ■ Drop Point            | ▬ County Road                   |
| ⊙ Helibase       | ⊗ Camp                  | ▬ Wildfire Daily Fire Perimeter |
| ⌋ Division Break | ⊙ Staging Area          | ▬ Community Areas               |
| ⌌ Branch Break   | ⊙ Repeater              | ▬ Major Roads                   |
|                  | ● Highlighted Feature   |                                 |
|                  | ⚡ Aerial Hazard         |                                 |
|                  | ▬ Contained             |                                 |



0 1 2 4 Miles

Datum: North American 1983

Author Name Updated: 8/25/2023 2102

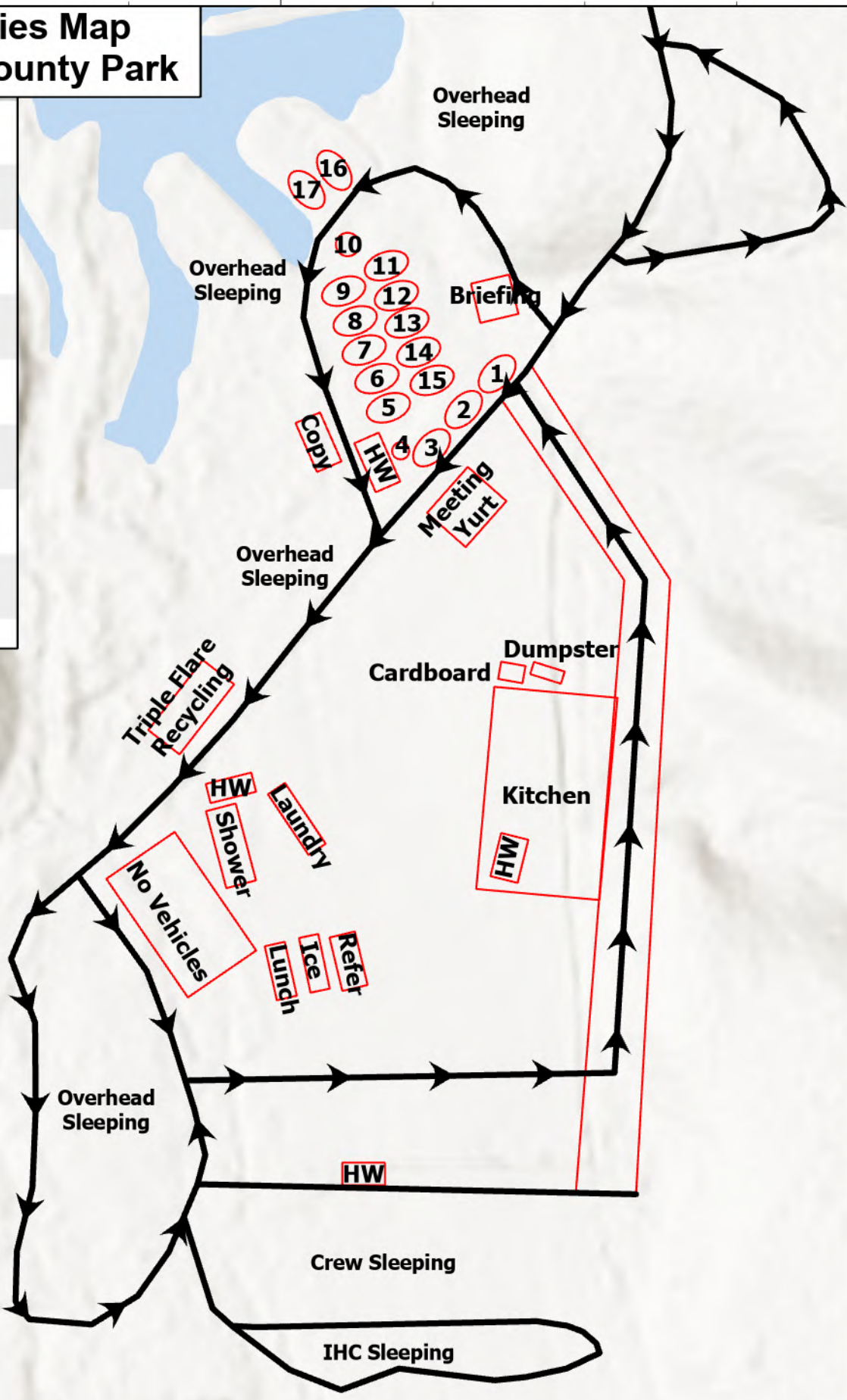


# Camp Facilities Map Lake Selmac County Park

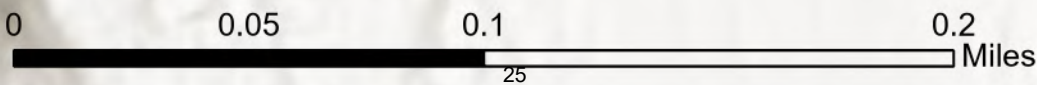
42°15.5'N

42°15.5'N

Security	1
Communications	2
Medical	3
Ordering	4
Check-in/Demob	5
Plans	6
GIS/Situation	7
Logistics	8
IC/Liason	9
HR/Training	10
Operations	11
Resources/Air Ops	12
Safety/FBAN/IMET	13
PIO	14
Finance	15
Agency Administrators	16
Meeting Yurt	17



Ground support and supply moved to 30365 Redwood Hwy Cave Junction, OR 97523



## RETURN TO PLANNING OPS BY 1300 HRS

Via radio (preferred method), text, email, photo, or cell phone

Project for Next Operational Period and 48 & 72 hours in the Future

<b>DIVISION PLANNING SHEET</b>		Division/ Group		Name Of Division /Group Supervisor	
Next Operational Period Date:					
Operations and Resource unit text number and e-mail					
<input type="checkbox"/> - Roll over assigned Resources <input type="checkbox"/> -Excess resources <input type="checkbox"/> -Correction to 204					
E or C number	Strike Team/Task Force/ Resource Designator	Leader	Number Persons	Comments	
<input type="checkbox"/> -Request for additional Resources					
Number	Type	Resource Kind	Number	Type	Resource Kind
Operational Projection/Resource Needs/Excess Resources (48 hours):					
Operational Projection/Resource Needs/Excess Resources (72 hours):					
Comments					

# ACTIVITY LOG (ICS 214)

<b>1. Incident Name:</b>		<b>2. Operational Period:</b> Date From: _____ Date To: _____ Time From: _____ Time To: _____	
<b>3. Name:</b>		<b>4. ICS Position:</b>	<b>5. Home Agency (and Unit):</b>
<b>6. Resources Assigned:</b>			
Name		ICS Position	Home Agency (and Unit)
<b>7. Activity Log:</b>			
Date/Time	Notable Activities		
<b>8. Prepared by:</b> Name: _____ Position/Title: _____ Signature: _____			
<b>ICS 214, Page 1</b>		Date/Time: _____	

# MEDICAL PLAN (206 WF)

1. Incident/Project Name				2. Operational Period				
<b>Smith River Complex North</b>				Date/Time: <b>8/26 0700 – 8/27 0700</b>				
<b>3. Ambulance Services</b>								
Name	Complete Address	Phone	Advanced Life Support (ALS)					
			Yes	No				
AMR	Cave Junction, OR	911	X					
<b>4. Air Ambulance Services</b>								
Name	Phone	Type of Aircraft & Capability						
Mercy Flight	1-800-903-9000 (Press 0)	Critical Care Team of Paramedic and RN 24 hr, 100'x100' LZ.						
REACH	1-800-338-4045	Critical Care Team of Paramedic and RN 24 hr, 100'x100' LZ.						
Teton Short Haul	Smith North Comms/Rogue CC	ALS, Short Haul, Daytime-Sunriver, OR						
National Guard Hoist	Smith North Comms/NWCC	24 hr, Roseburg, OR						
<b>5. Hospitals</b>								
Name	Degrees Decimal Minutes		Travel Time From ICP		Phone	Helipad		Level of Care
	Lat:		Air	Gnd.		Yes	No	
Asante 3 Rivers Medical Center (Grants Pass, OR)	42° 25.27' N		20 Min	90 Min.	541-472-7081	X		Level III Trauma
	Long:	123° 20.56' W						
Asante Rogue Regional Medical Center (Medford, OR)	42° 19.05' N		40 Min	120 Min.	541-789-7367	X		Level II Trauma
	Long:	122° 50.00' W						
Legacy Emanuel Hospital (Portland, OR)	45° 32.668' N		1.5 Hrs.	5 Hrs.	503-413-4121	X		Level I Trauma Burn Center
	Long:	122° 40.293' W						
Sutter Coast Hospital (Crescent City, CA)	41° 46.27454' N		X	2 Hrs.	707-464-8888		X	Level IV Trauma
	Long:	124° 11.537' W						
Mercy Medical Center (Redding, CA)	40° 34.14' N		1 Hr.	4 Hrs.	530-225-6000	X		Level II Trauma
	Long:	122° 23.97' W						
UC Davis Medical Center (Sacramento, CA)	38° 33.20' N		2 Hrs.	6 Hrs.	916-734-3636	X		Level I Trauma Burn Center
	Long:	121° 27.28' W						
<b>ICP</b>	<b>EMS Responders &amp; Capability:</b>		James Brown MEDL, EMPF 360-775-5413 Ben Meacham MEDL, EMTF 360-921-3817 Mark Notaras MEDL, EMTF 509-386-7860					
	Equipment Available on Scene:		ALS Kit, LP15 defib, O2, OTC meds					
	Medical Emergency Channel:		Smith River North Communications Plan					
	ETA for Ambulance to Scene:							
	Air:		30 – 60 min					
	Ground:		30 – 60 min					
	Approved Heli-Spot							
<b>DIV H</b>	<b>EMS Responders &amp; Capability:</b>		Medic 2 Erica Jackson 662-588-2328 ALS Kit/AED EMT 1 Lisa Johnson 909-632-5999 BLS Kit/AED					
	Equipment Available on Scene:		ALS Kit, defib, O2, OTC meds					
	Medical Emergency Channel:		Smith River North Communications Plan					
	ETA for Ambulance to Scene:							
	Air:		30-60 min					
	Ground:		60 min					
	Approved Heli-Spot							
<b>DIV I</b>	<b>EMS Responders &amp; Capability:</b>		Medic 4 Chad Payletz 954-326-9006 ALS Kit/AED Medic 24 Cody Baker 205-389-7064 ALS kit/AED EMT 4 Jonathon Cahill 319-431-1663 BLS Kit/AED AMBO 1 Mike Wertz 928-303-0856 ALS 4X4 Ambulance REMS 1 Dan Blaul 949-577-2663 ALS Kit/UTV Rope Rescue					
	Equipment Available on Scene:		ALS Kit, defib, O2, OTC meds					
	Medical Emergency Channel:		Smith River North Communications Plan					
	ETA for Ambulance to Scene:							
	Air:		30-60 min					
	Ground:		60 min					
	Approved Heli-Spot							
Lat:								
Long:								

## MEDICAL PLAN (206 WF)

<b>DIV K</b>	<b>EMS Responders &amp; Capability:</b>	<b>Medic 1 Joel Bower</b> 360-461-7390 ALS Kit/AED <b>Medic 3 Stephan Smith</b> 636-748-0373 ALS Kit/AED <b>EMT 2 James Henson</b> 208-316-4658 BLS Kit/AED <b>AMBO 2 Lanee Forkner</b> 480-625-5353 ALS 4X4 Ambulance <b>REMS 2 Brady Graham</b> 541-282-4637 ALS Kit/UTV Rope Rescue
	Equipment Available on Scene:	ALS Kit, defib, O2, OTC meds
	Medical Emergency Channel:	Smith River North Communications Plan
	ETA for Ambulance to Scene:	
	Air:	30-60 min
	Ground:	60 min
	Approved Heli-Spot	
	Lat: Long:	
<b>STRUCTURE EAST</b>	<b>EMS Responders &amp; Capability:</b>	<b>Medic 6 Alex Vera</b> 773-698-3224 ALS Kit/AED
	Equipment Available on Scene:	ALS Kit, defib, O2, OTC meds
	Medical Emergency Channel:	Smith River North Communications Plan
	ETA for Ambulance to Scene:	
	Air:	30-60 min
	Ground:	60 min
	Approved Heli-Spot	
	Lat: Long:	
<b>STRUCTURE WEST</b>	<b>EMS Responders &amp; Capability:</b>	<b>EMT 3 Trevor Brant</b> 217-622-9158 BLS Kit/AED
	Equipment Available on Scene:	BLS Kit, defib, O2
	Medical Emergency Channel:	Smith River North Communications Plan
	ETA for Ambulance to Scene:	
	Air:	30-60 min
	Ground:	60 min
	Approved Heli-Spot	
	Lat: Long:	
<b>CAVE HELIBASE</b>	<b>EMS Responders &amp; Capability:</b>	<b>Medic 5 Ryan Shank</b> 717-490-4990 ALS Kit/AED
	Equipment Available on Scene:	ALS Kit, defib, O2, OTC meds
	Medical Emergency Channel:	Smith River North Communications Plan
	ETA for Ambulance to Scene:	
	Air:	
	Ground:	10 min
	Approved Heli-Spot	
	Lat: Long:	
<b>NIGHT NORTH</b>	<b>EMS Responders &amp; Capability:</b>	<b>Medic 23 Michael Weig</b> 605-545-5866 ALS Kit/AED <b>Medic 22 Chris Hardesty</b> 760-984-9915 ALS Kit/AED <b>AMBO 3 Darren Hearn</b> 302-245-5375 ALS 4X4 Ambulance
	Equipment Available on Scene:	ALS Kit, defib, O2, OTC meds
	Medical Emergency Channel:	Smith River North Communications Plan
	ETA for Ambulance to Scene:	
	Air:	60 min
	Ground:	60 min
	Approved Heli-Spot	
	Lat: Long:	

Prepared By (Medical Unit Leader)	Date	Reviewed By (Safety Officer)	Date
Ben Meacham MEDL	8/25/2023	Ray Hershey SOF2	8/25/2023
Signature: <i>Ben Meacham</i>		Signature: <i>Ray Hershey</i>	



# MEDICAL PLAN (ICS 206 WF)

Controlled Unclassified Information//Basic

## Medical Incident Report

**FOR A NON-EMERGENCY INCIDENT, WORK THROUGH CHAIN OF COMMAND TO REPORT AND TRANSPORT INJURED PERSONNEL AS NECESSARY.**

**FOR A MEDICAL EMERGENCY: IDENTIFY ON-SCENE INCIDENT COMMANDER BY NAME AND POSITION AND ANNOUNCE "MEDICAL EMERGENCY" TO INITIATE RESPONSE FROM IMT COMMUNICATIONS/DISPATCH.**

**Use the following items to communicate situation to communications/dispatch.**

**1. CONTACT COMMUNICATIONS / DISPATCH** (Verify correct frequency prior to starting report)

*Ex: "Communications, Div. Alpha. Stand-by for Emergency Traffic."*

**2. INCIDENT STATUS:** Provide incident summary (including number of patients) and command structure.

*Ex: "Communications, I have a Red priority patient, unconscious, struck by a falling tree. Requesting air ambulance to Forest Road 1 at (Lat./Long.) This will be the Trout Meadow Medical, IC is TFLD Jones. EMT Smith is providing medical care."*

Severity of Emergency / Transport Priority	<input type="checkbox"/> <b>RED / PRIORITY 1 Life or limb threatening injury or illness. Evacuation need is IMMEDIATE</b> <i>Ex: Unconscious, difficulty breathing, bleeding severely, 2° – 3° burns more than 4 palm sizes, heat stroke, disoriented.</i> <input type="checkbox"/> <b>YELLOW / PRIORITY 2 Serious Injury or illness. Evacuation may be DELAYED if necessary.</b> <i>Ex: Significant trauma, unable to walk, 2° – 3° burns not more than 1-3 palm sizes.</i> <input type="checkbox"/> <b>GREEN / PRIORITY 3 Minor Injury or illness. Non-Emergency transport</b> <i>Ex: Sprains, strains, minor heat-related illness.</i>	
Nature of Injury or Illness & Mechanism of Injury		<i>Brief Summary of Injury or Illness (Ex: Unconscious, Struck by Falling Tree)</i>
Evacuation Request		<i>Air Ambulance / Short Haul/Hoist Ground Ambulance / Other</i>
Patient Location		<i>Descriptive Location &amp; Lat. / Long. (WGS84)</i>
Incident Name		<i>Geographic Name + Medical (Ex: Trout Meadow Medical)</i>
On-Scene Incident Commander		<i>Name of on-scene IC of Incident within an Incident (Ex: TFLD Jones)</i>
Patient Care		<i>Name of Care Provider (Ex: EMT Smith)</i>

**3. INITIAL PATIENT ASSESSMENT:** Complete this section for each patient as applicable (start with the most severe patient)

Patient Assessment: See IRPG PAGE 106

Treatment:

**4. EVACUATION PLAN:**

Evacuation Location (if different): (Descriptive Location (drop point, intersection, etc.) or Lat. / Long.) Patient's ETA to Evacuation Location:

Helispot / Extraction Site Size and Hazards:

**5. ADDITIONAL RESOURCES / EQUIPMENT NEEDS:**

*Example: Paramedic/EMT, crews, immobilization devices, AED, oxygen, trauma bag, IV/fluid(s), splints, rope rescue, wheeled litter, HAZMAT, extrication*

**6. COMMUNICATIONS: Identify State Air/Ground EMS Frequencies and Hospital Contacts as applicable**

Function	Channel Name/Number	Receive (RX)	Tone/NAC *	Transmit (TX)	Tone/NAC *
COMMAND					
AIR-TO-GRND					
TACTICAL					

**7. CONTINGENCY: Considerations:** If primary options fail, what actions can be implemented in conjunction with primary evacuation method? Be thinking ahead..

**8. ADDITIONAL INFORMATION:** Updates/Changes, etc.

**REMEMBER:** Confirm ETAs of resources ordered. Act according to your level of training. Be Alert. Keep Calm. Think Clearly. Act Decisively.