

INCIDENT ACTION PLAN

SMITH RIVER COMPLEX - SOUTH

CA-SRF-000968
P5QJ6L



OPERATIONAL PERIOD


8/26/2023 0700

to

8/27/2023 0700



ORGANIZATION ASSIGNMENT LIST (ICS 203)

1. Incident Name: SMITH RIVER COMPLEX - SOUTH		2. Operational Period: Date From: 8/26/2023		Date To: 8/27/2023	
		Time From: 0700		Time To: 0700	
3. Incident Commander(s) and Command Staff:			7. Operation Section:		
IC/UC's	Tom Clemo / Stephen Fillmore(t)		Day Operations	Scott Grasmick / Nick Cleary(t)	
Deputy	Jon Lucas		Strategic Operations	Travis Ederer	
Safety Officer	Rick Bertram		Planning Operations	Tom Himmelrich / Trevor Johnson	
Information Officer	T. Stokesberry / T. Engberg / L. Walker		Night Operations	Joe Reyes	
Liaison Officer	R. Cablayan / J. Jones / B. Neumann / A. Widling		Branch	V	Shaun Craig / Erick D'Amico(t)
			Division/Group	A	Rick Dykhouse / Neal McCann(t)
4. Agency/Organization Representatives:			Division/Group	B	Jere Classay / Andy Beller(t)
Agency/Organization	Name		Division/Group	D	Patrick Bye / Scott Roeber(t)
SRF Forest Supervisor	Ted McArthur		Division/Group	GASQUET STR GRP	Brett Hildebrand/ Michael Shiffar(t)
Rogue/Siskiyou AREPs	D. Quinones / J. Winn / A. Watson		Division/Group	DIVIDE STR GRP	Cameron Todd / Rodnie Roberts(t)
SRF Agency Admin	K. Allen / A. Skowlund		Branch	XX	Joe Tieso
CAL OES (ESC)	Robyn Cole		Division/Group	MM	Ron Oatman / Josh Fudge(t)
CAL OES FIRE	Ryan Wakefield		Division/Group	PP	Corey Stowe / Jason Falarski(t)
CAL Fire	Kurt McCray / Brandon Rodgers		Division/Group	SS	TBD / Richard Zinchuk(t)
CHP	Lt. Pete Roach		Division/Group	VV	Michael Willardson / Kevin Montoya(t)
Del Norte CO. OEM	Deborah Otenberg		Division/Group	YY	Todd McNeal / Keith McMillen(t)
Crescent City Manager	Eric Wier		Branch	CONTINGENCY	Jeff Shea
SRF Sheriff Office	Jennifer Wooley		Division/Group	CONTINGENCY	Nick Nava / Rich Durrell(t)
Del Norte Sheriff LELO	Jon Maxwell		Division/Group		
Crescent City Police Chief	Richard Griffin		Division/Group		
Crescent City Fire Chief	Kevin Carey		Division/Group		
NPS LEO	Daniel Owens		Branch		
Bureau of Indian Affairs	Nathan Gogna		Division/Group	NIGHT STR GRP	Ryan Edmondson / Jonathan Cripe(t)
Tolowa Tribe	Amanda O'Connell		Division/Group	NIGHT A/B/D	Josh Sunde / Brad Arganbright
Red Cross	Mary Dormind		Division/Group	NIGHT YY	James Robbins / Paul Coda(t)
Resource Advisor	AJ Donnell		Division/Group		
5. Planning Section:			Division/Group		
Chief	John Germanetti		Branch		
Deputy	Robert Kovach		Division/Group		
Resource Unit	Hudley/Roberts/Nahas(t)/Sketo(t)/Moreno(t)		Division/Group		
Situation Unit	M. Held / J. Hunter / Z. Jackson(t)		Division/Group		
Demobilization Unit	Mike Dunkel		Division/Group		
GISS	E. Dolhanski / D. Beasley / E. Opliger		Division/Group		
FBAN	Nic Elmquist		Air Operations Branch		Director: John Crotty
IMET	James White		Air Support Group Supervisor		Curt Warner
Training Specialist	John Leblanc		Air Tactical Group Supervisor		
Check-In Recorder	David Charron(t)/Margot Leech(t)		Helibase Manager		
6. Logistics Section			8. Finance/Administration Section		
Chief	Bob Feldtz / Mike Farmer(t)		Chief	Lisa Dow	
Facilities Unit	Cassie Buckley(t)		Time Unit	Amanda Folendorf / Tiffanie Sachse-Santi	
Ground Support Unit	Kevin Palm		Personnel Time	Ryan Bridgen / Terese Toomey(t)	
Communications Unit	Glendon Chan / Chris Oliver(t)		Comp/Claims Unit	Tina Weaver	
Medical Unit	J. Emerson/M. Lencioni/M. Caffey(t)		Cost Unit	Sandra Tarvin	
ITSS	Marty Cohn / Justin Martin(t)				
Prepared By: Name:	Robert Kovach	Position/Title:	PSC	Signature:	
ICS 203		Date/Time:	8/25/2023 2300 hours		



Fire Weather Forecast



FORECAST NO: 9
PREDICTION FOR: Saturday-Sunday
DATE: August 26th, 2023
FORECAST ISSUED: 1800 August 25th, 2023

FIRE: Smith River Complex South
UNIT: CA-SRF-968
IMET: James White (240-778-5316)
SIGNED: *James White*

WEATHER DISCUSSION: * Valley elevations = 400ft (Gasquet), Ridgetop elevations = 3500 ft (Camp Six) *
 As low pressure persists off the coast of Central California, a calm period marked by increased marine influence will continue to settle across the area. Where smoke allows, temperatures will gradually rise into the low 70s by late morning with RH around 50%. Increasing westerly wind each afternoon will both help mix out smoke along the west side of the fire and suppress any further warming and drying. Winds will remain gentle below 8 mph except in wind channeling terrain exposed to the west. Nights will be similarly as benign except poor recoveries as low as 45% will persist each night right above the inversion under the influence of gentle northeast winds.

TODAY:

WEATHER: Clear. Heavy smoke in valleys near the fire.

MAX TEMP: Valleys: 72-77°F (1-3°F ↑)
 Ridgetops: 70-75°F (1-3°F ↑)

MIN RH: Valleys: 50-60% (2-6% ↓)
 Ridgetops: 55-65% (2-4% ↓)

CHC WTG RAIN: 0% **LAL:** 1

SFC VIS: 1-2 miles, better west in the afternoon

WINDS: Valleys: Morning downslope 2-4 mph afternoon upslope 2-6 mph.
 (20 feet) Ridgetops: Morning northeast 2-4 mph, west 4-8 mph gusts to 16 mph.

MIXING HEIGHT: Rising to 4,000 ft by 1400.

TRANSPORT WIND: West 6-10 mph.

TONIGHT:

WEATHER: Mostly clear. Weak thermal belt 1500 to 4000 ft.

MIN TEMP: Valleys: 52-57° (1-3°F ↑)
 Ridgetops: 58-66° (Little Change)

MAX RH: Valleys: 92-97% (1-3% ↓)
 Ridgetops: 45-55% (2-4% ↓)

CHC WTG RAIN: 0% **LAL:** 1

SFC VIS: 1-2 miles.

WINDS: Valleys: Downslope 2-4 mph.
 (20 FEET) Ridgetops: Northeast 4-8 mph infrequent gusts to 12 mph.

MIXING HEIGHT: Dropping to 1,500 ft by 2200.

TRANSPORT WIND: Northeast 3-6 mph.

SUNDAY:

WEATHER: Clear. Heavy smoke in valleys near the fire.

MAX TEMP: Valleys: 72-77°F (Little Change)
 Ridgetops: 70-75°F (Little Change)

MIN RH: Valleys: 50-60% (Little Change)
 Ridgetops: 55-65% (Little Change)

CHC WTG RAIN: 0% **LAL:** 1

SFC VIS: 1-2 miles, better west in the afternoon

WINDS: Valleys: Morning downslope 2-4 mph afternoon upslope 3-6 mph.
 (20 feet) Ridgetops: Morning northeast 2-4 mph, west 5-10 mph gusts to 18 mph.

MIXING HEIGHT: Rising to 4,000 ft by 1400.

TRANSPORT WIND: West 8-12 mph.

EXTENDED OUTLOOK: A similar, generally favorable pattern will continue into early next week. The main changing variable will be the depth and strength of the marine layer on any given day which will slightly modify overall conditions. Weather models show with high consistency and confidence and a moderate but prolonged east wind event around next Wednesday through Thursday. Current model estimates show the highest wind gusts at night around 45 mph on ridgetops.

→ Nearby Weather Observations



FIRE BEHAVIOR FORECAST	
Incident Name: SMITH RIVER COMPLEX - SOUTH	Operational Period: Date From: 8/26/23 Date To: 8/27/23 Time From: 0700 Time To: 0700
Forecast Number: 09	Type of Fire: Wildfire
Unit: Six Rivers National Forest - Gasquet District	
INPUTS	
WEATHER SUMMARY: ***See Fire Weather Forecast***	
FUELS SUMMARY: Due to the below normal amount of precipitation, live fuel moisture levels did not recover this spring, making the shrubs readily available for consumption. There are abundant snag patches within the fire scars; Biscuit (2002), Coon (2015), Eclipse Complex (2017) and Slater (2020). The fuel moistures of the manzanita are around 110% and the 1000-hour fuels 9%, below critical levels. Given the dryness of the vegetation, there is abundant available fuels to continue growth of the Kelly fire as it fills in the pockets between recent fire scars.	
OUTPUTS	
FIRE BEHAVIOR	
GENERAL: We are currently in what is peak of fire season for this area of the state. Historically, the fuels along the riparian areas have been resistant to burning, but that is not the case this year. Under smoky conditions, the fire will consume the heavy dead surface fuels and have isolated tree torching where there is a higher fuel load under the timber canopy. Roll-out will continue to be a driver of growth in these areas. When the fire is exposed to a stronger wind or gets established on a steep slope with aligned fuels and topography, expect rapid rates of spread with sustained crown runs and moderate range spotting. Fire Danger Indices – 2022 IRPG Page 39 Energy Release Component (ERC): 90th (trending down) August Average ERC Percentile: 85th 2020 Slater Fire Large growth days (September 10th) - ERC Percentile: 99th Peak Burn Period (1400 – 2000) - Probability of Ignition (PIG): 40% (shaded), 40% (unshaded)	
SPECIFIC: Branch V: Slightly drier conditions should allow for an earlier burn window in Div. D and B. The afternoon westerly flow will be favorable for this operation as well. The window for burning in Div. A will be later in the day due to its lower elevation being more likely to feel the effects of overnight smoke and marine layer intrusion. The burn window will also be shorter in Div. A than in the other divisions. The fire will continue to back down to the South Fork of Smith River in Div. MM. This creek appears narrower and more vegetated, so at some point the fire will spot across and make an uphill run towards DP 56. Branch XX: The afternoon westerly flow will keep the fire backing off French Hill Road towards Hwy 199 and the Tahoe handline connecting the two. An area of concern in the longer term is connecting the 17N40 road south to Craigs Creek and up to the 2015 Coon fire scar. This piece will take some time to prep and fire ahead of the strong easterly winds predicted middle of next week. After an estimated 0.2" of rain the other evening, there was little heat showing on the Island and Prescott fires.	
AIR OPERATIONS: Sunrise 0607, Last Light 2028 (Daylength: losing 2 min, 35 sec each day) Smoke and marine layer influence will keep air support limited early in the shift, with clearing expected in the afternoon.	
SAFETY: Communicate all burning operations with adjacent divisions to ensure all resources are aware of the plan.	
Prepared by Fire Behavior Analyst: Nic Elmquist	Signature: <i>Nic Elmquist</i>
Date/Time: 8/26/23 at 1800	

ASSIGNMENT LIST (ICS 204 WF)

CONTROLLED UNCLASSIFIED INFORMATION//BASIC

1. Incident Name:		2. Operational Period:				3. Branch		Division	
SMITH RIVER COMPLEX - SOUTH		Date From: 08/26/23		Date To: 08/27/23		V		A	
		Time From: 0700		Time To: 0700		Page 1 of 1		Alpha	
4. Operations Personnel:									
Operations Section Chief: Scott Grasmick / Nick Cleary(t)			Planning Ops: Tom Himmelrich / Trevor Johnson						
Branch Director: Shaun Craig / Erick D'Amico(t)			Night Ops: Joe Reyes						
Division/Group Supervisor: Rick Dykhouse / Neal McCann(t)			Air Attack:						
5. Resources Assigned:		**Shaded resources below are 24 hour**							
Resource Identifier	ALS	LWD	Leader	Personnel	Request #	Hours	Reporting Location		
HC1 VENTANA IHC		9/4	HAROLD COOK	22	C-32	1400-0200	WARD FIELD CAMP		
HC1 VNC CREW 12		9/5	JOHN ENNEKING	19	C-36	0700-1900	WARD FIELD CAMP		
HC2IA BLM FOLSOM VETS		8/29	ROGER HOOPER	17	C-6	0700-1900	WARD FIELD CAMP		
TF SNF 2023		8/30	RON SANDLING	18	E-312	0700-1900	WARD FIELD CAMP		
EST6 XSB 1520F		9/6	SCOTT NUNEZ	14	E-314	1400-0200	WARD FIELD CAMP		
ENG3 PVT NATIONAL WILDLAND 142		9/3	JASON DAVIS	3	E-142	0700-1900	WARD FIELD CAMP		
ENG3 PVT SCHOLLS 148		9/3	BRIAN RINGEN	3	E-148	0700-1900	WARD FIELD CAMP		
ENG4 PVT FIRECO 136		9/2	TYLER NAIL	2	E-136	0700-1900	WARD FIELD CAMP		
ENG4 PVT PIERSOL 267		9/6	BRIDGER LARSEN	3	E-267	0700-1900	WARD FIELD CAMP		
ENG6 PVT VALKYRIE 138		9/2	CHARLES REESE	3	E-138	0700-1900	WARD FIELD CAMP		
ENG6 PVT HB FORESTRY 211		9/2	AARON GONZALEZ	3	E-211	0700-1900	WARD FIELD CAMP		
DO22 PNF DZ2		9/6	TOM SANCHEZ	2	E-328	0700-1900	WARD FIELD CAMP		
WTT2 PVT NATIONAL 165		9/2	AARON PHILLIPS	2	E-165	0700-1900	WARD FIELD CAMP		
FMOD PAC RIDGELINE 156		9/3	ERNIE ADAMS	2	O-156	0700-1900	WARD FIELD CAMP		
EMPF MORGAN	X	9/6	ROBERT MORGAN	1	O-376	0700-1900	WARD FIELD CAMP		
EMTF(T) AMBRIZ		9/6	MANUEL AMBRIZ	1	O-299	0700-1900	WARD FIELD CAMP		
6. Work Assignments:									
Keep the fire north of Highway 199 and east of County Road 305 in order to protect the natural, cultural, and infrastructure values utilizing dozer and handline, firing where appropriate, and providing holding forces during operations.									
7. Special Instructions:									
-Be aware of retardant avoidance areas, mine shafts and naturally occurring asbestos.									
-Maintain awareness of fire conditions affecting road systems in your area that might be a primary escape route and establish secondary egress to safe area. Ensure trigger points are established and re-evaluated throughout the shift.									
Safety Officers assigned to Division A/Divide & Gasquet Structure Protection: Guadalupe Fernandez									
REMS 1 & 4 assigned to Branch V									
REAFs: Berg, Gray, Clark									
8. Communications									
Name	Ch	Function	Rx Freq	Rx Tone	Tx Freq	Tx Tone	Mode	Notes	
NIFC C3	1	COMMAND	170.4250	(T3) 131.8	168.0750	(T3) 131.8	A	CAMP 6	
NIFC T3	7	TACTICAL	168.6000	(T3) 131.8	168.6000	(T3) 131.8	A		
CALCORD	15	TACTICAL	156.0750	(T6) 156.7	156.0750	(T6) 156.7	A	EMS AIR COORDINATION	
A/G TAC	14	A/G TAC	169.4875	0.0	169.4875	0.0	A		
AIRGUARD	16	AIRGUARD	168.6250	0.0	168.6250	(T1) 110.9	A		
9. Prepared by: Name:		Hudley/Roberts/Nahas(t)/Sketo(t)/More no(t)							
		RESL				Signature: <i>Smorono</i>			
ICS 204		Date/Time: 8/25/2023 2200				Personnel Count: 115			

ASSIGNMENT LIST (ICS 204 WF)

CONTROLLED UNCLASSIFIED INFORMATION//BASIC

1. Incident Name:	2. Operational Period:	3. Branch	Division
SMITH RIVER COMPLEX - SOUTH	Date From: 08/26/23 Date To: 08/27/23 Time From: 0700 Time To: 0700	V	B
4. Operations Personnel:		Page 1 of 2	Bravo

Operations Section Chief: Scott Grasmick / Nick Cleary(t)	Planning Ops: Tom Himmelrich / Trevor Johnson
Branch Director: Shaun Craig / Erick D'Amico(t)	Night Ops: Joe Reyes
Division/Group Supervisor: Jere Classay / Andy Beller(t)	Air Attack:

5. Resources Assigned:	**Shaded resources below are 24 hour**							
Resource Identifier	ALS	LWD	Leader	Personnel	Request #	Hours	Reporting Location	
HC1 SMITH RIVER IHC		9/7	DOUG DENLING	21	C-63	0700-1900	WARD FIELD CAMP	
HC2I NLTX SLIDE MOUNTAIN 7		8/30	JOSH HIGGINS	19	C-7	0700-1900	WARD FIELD CAMP	
HC2I BIA FORT APACHE		9/3	BRIAN QUINTERO	22	C-25	0700-1900	WARD FIELD CAMP	
HC2 PVT PACIFIC OASIS 24		9/2	CASEY DOWNS	20	C-24	0700-1900	WARD FIELD CAMP	
HC2 PVT GFP ENT 56		9/7	MITCHELL ELSTAD	20	C-56	0700-1900	WARD FIELD CAMP	
HC2 PVT 3B'S FORESTRY		9/6	MICHEAL MARLOW	20	C-60	0700-1900	WARD FIELD CAMP	
ENG3 PVT NESBITTS 135		9/2	VAS NAIKER	3	E-135	0700-1900	WARD FIELD CAMP	
ENG4 PVT CONTRACT WATER 113		9/3	MIKE MUSIA	3	E-113	0700-1900	WARD FIELD CAMP	
ENG4 PVT ARCHER 123		9/2	JAMES HARTER	3	E-123	0700-1900	WARD FIELD CAMP	
ENG4 PVT FLASHBACK 149		9/3	TREVOR MCWATERS	3	E-149	0700-1900	WARD FIELD CAMP	
ENG4 PVT J3 205		9/2	CHRIS DESROSIER	3	E-205	0700-1900	WARD FIELD CAMP	
DO22 PVT EVANS BROTHERS 169		9/2	TOM EVANS	1	E-169	0700-1900	WARD FIELD CAMP	
DO22 PVT LONESTAR 170		9/2	ROBERT ASCHERIN	2	E-170	0700-1900	WARD FIELD CAMP	
DO22 PVT GARMAN CONT 172		9/2	DOUG GRIDER	2	E-172	0700-1900	WARD FIELD CAMP	
WTT2 PVT 310 DUST CONTROL 348		9/7	CAMERON MULLINS	2	E-348	0700-1900	WARD FIELD CAMP	
TFLD POWERS		9/7	BRIAN POWERS	1	O-288	0700-1900	WARD FIELD CAMP	
TFLD(T) WRENN		9/5	WILLIAM WRENN	1	O-231	0700-1900	WARD FIELD CAMP	
TFLD(T) ASHER		9/7	MICHEAL ASHER	1	O-289	0700-1900	WARD FIELD CAMP	

6. Work Assignments:
Keep the fire north of Highway 199 and east of County Road 305 in order to protect the natural, cultural, and infrastructure values utilizing dozer and handline, firing where appropriate, and providing holding forces during operations.

7. Special Instructions:
-Be aware of retardant avoidance areas, mine shafts and naturally occurring asbestos.
-Maintain awareness of fire conditions affecting road systems in your area that might be a primary escape route and establish secondary egress to safe area. Ensure trigger points are established and re-evaluated throughout the shift.
Safety Officers assigned to Division B/D: Ray Franco and Shaun Davis(t)
REMS 1 & 4 assigned to Branch V
REAFs: Clark, Stubbs, Siedel, Loose


8. Communications								
Name	Ch	Function	Rx Freq	Rx Tone	Tx Freq	Tx Tone	Mode	Notes
NIFC C3	1	COMMAND	170.4250	(T3) 131.8	168.0750	(T3) 131.8	A	CAMP 6
NIFC T4	8	TACTICAL	166.7250	(T3) 131.8	166.7250	(T3) 131.8	A	
CALCORD	15	TACTICAL	156.0750	(T6) 156.7	156.0750	(T6) 156.7	A	EMS AIR COORDINATION
A/G TAC	14	A/G TAC	169.4875	0.0	169.4875	0.0	A	
AIRGUARD	16	AIRGUARD	168.6250	0.0	168.6250	(T1) 110.9	A	

9. Prepared by: Name: Hudley/Roberts/Nahas(t)/Sketo(t)/More no(t) RESL Signature: Smoreno

ICS 204 Date/Time: 8/25/2023 2200 Personnel Count: 147

ASSIGNMENT LIST (ICS 204 WF)

CONTROLLED UNCLASSIFIED INFORMATION//BASIC

1. Incident Name: SMITH RIVER COMPLEX - SOUTH		2. Operational Period: Date From: 08/26/23 Date To: 08/27/23 Time From: 0700 Time To: 0700			3. Branch V		Division D	
4. Operations Personnel:					Page 1 of 1		Delta	
Operations Section Chief: Scott Grasmick / Nick Cleary(t)				Planning Ops: Tom Himmelrich / Trevor Johnson				
Branch Director: Shaun Craig / Erick D'Amico(t)				Night Ops: Joe Reyes				
Division/Group Supervisor: Patrick Bye / Scott Roeber(t)				Air Attack:				
5. Resources Assigned:		**Shaded resources below are 24 hour**						
Resource Identifier	ALS	LWD	Leader	Personnel	Request #	Hours	Reporting Location	
HC1 LAC ST1170G		9/7	ROB MORALES	25	C-40	0700-1900	WARD FIELD CAMP	
HC2 PVT NORTH PACIFIC FORESTRY 96		8/29	JEFF ANDERSON	20	C-96	0700-1900	WARD FIELD CAMP	
HC2 PVT JC OROZCO 1		9/2	JAMAL KWIATKOWSKI	20	C-1	0700-1900	WARD FIELD CAMP	
ENG3 LPF 316		8/29	KYLE ARMSTRONG	5	E-282	0700-1900	WARD FIELD CAMP	
ENG3 STF 314		8/27	ANDREW KAHANA	5	E-357	0700-1900	WARD FIELD CAMP	
ENG3 PVT TORRES E3		9/2	ADOLFO ESPINO	3	E-218	0700-1900	WARD FIELD CAMP	
ENG3 PVT J3 258		9/6	WES WALLACE	3	E-258	0700-1900	WARD FIELD CAMP	
ENG4 PVT DRAGON FIGHTERS 141		9/3	MIKE SPECHT	3	E-141	0700-1900	WARD FIELD CAMP	
ENG5 PVT GLOBAL WILDFIRE 143		9/3	TJ BURKEY	3	E-143	0700-1900	WARD FIELD CAMP	
ENG5 PVT MONTROSE 144		9/3	DIEGO ALVAREZ	3	E-144	0700-1900	WARD FIELD CAMP	
ENG6 PVT SWFS 112		9/3	ROBERT STIGEN	3	E-112	0700-1900	WARD FIELD CAMP	
ENG6 PVT ADAMS 116		9/2	MILAN TORRES	3	E-116	0700-1900	WARD FIELD CAMP	
ENG6 PVT FENIX 117		9/2	SUZANNE FLYNN	3	E-117	0700-1900	WARD FIELD CAMP	
ENG6 PVT J3 CONTRACTING 259		9/6	BEN MYERS	3	E-259	0700-1900	WARD FIELD CAMP	
WTS1 PVT BERRY 342		9/6	STEVEN BERRY	1	E-342	0700-1900	WARD FIELD CAMP	
WTT2 PVT SACRAMENTO MTN 163		9/3	RICHARD DAVIS	2	E-163	0700-1900	WARD FIELD CAMP	
WTT2 PVT DYNAMITE 168		9/3	MICHAEL RUDOLPH	2	E-168	0700-1900	WARD FIELD CAMP	
GRD1 PVT ANDERSON ROCK 289		9/7	NICK ANDERSON	2	E-289	0700-1900	WARD FIELD CAMP	
TFLD ELLSBERRY		9/6	RICHARD ELLSBERRY	1	O-293	0700-1900	WARD FIELD CAMP	
STEN MADDEN		9/6	CLINT MADDEN	1	O-258	0700-1900	WARD FIELD CAMP	
EMPF MUNDS	X	9/1	NOAH MUNDS	1	O-91	0700-1900	WARD FIELD CAMP	
EMTF HAPKE		9/1	MIKE HAPKE	1	O-105	0700-1900	WARD FIELD CAMP	
6. Work Assignments: Keep the fire north of Highway 199 and east of County Road 305 in order to protect the natural, cultural, and infrastructure values utilizing dozer and handline, firing where appropriate, and providing holding forces during operations.								
7. Special Instructions: -Be aware of retardant avoidance areas, mine shafts and naturally occurring asbestos. -Maintain awareness of fire conditions affecting road systems in your area that might be a primary escape route and establish secondary egress to safe area. Ensure trigger points are established and re-evaluated throughout the shift. Safety Officers assigned to Division B/D: Ray Franco and Shaun Davis(t) REMS 1 & 4 assigned to Branch V REAFs: Stubbs, Siedel, Loose								
8. Communications								
Name	Ch	Function	Rx Freq	Rx Tone	Tx Freq	Tx Tone	Mode	Notes
NIFC C3	1	COMMAND	170.4250	(T3) 131.8	168.0750	(T3) 131.8	A	CAMP 6
NIFC T1	6	TACTICAL	168.0500	(T3) 131.8	168.0500	(T3) 131.8	A	
CALCORD	15	TACTICAL	156.0750	(T6) 156.7	156.0750	(T6) 156.7	A	EMS AIR COORDINATION
A/G TAC	14	A/G TAC	169.4875	0.0	169.4875	0.0	A	
AIRGUARD	16	AIRGUARD	168.6250	0.0	168.6250	(T1) 110.9	A	
9. Prepared by: Name: Hudley/Roberts/Nahas(t)/Sketo(t)/More no(t) RESL								
						Signature: 		
ICS 204		Date/Time: 8/25/2023 2200			Personnel Count: 113			

NIMS IAP

CONTROLLED UNCLASSIFIED INFORMATION//BASIC

ASSIGNMENT LIST (ICS 204 WF)

CONTROLLED UNCLASSIFIED INFORMATION//BASIC

1. Incident Name:		2. Operational Period:				3. Branch		Division	
SMITH RIVER COMPLEX - SOUTH		Date From: 08/26/23	Date To: 08/27/23			V		GASQUET STR GRP	
		Time From: 0700	Time To: 0700						
4. Operations Personnel:									
Operations Section Chief: Scott Grasmick / Nick Cleary(t)					Planning Ops: Tom Himmelrich / Trevor Johnson				
Branch Director: Shaun Craig / Erick D'Amico(t)					Night Ops: Joe Reyes				
Division/Group Supervisor: Brett Hildebrand/ Michael Shiffrar(t)					Air Attack:				
5. Resources Assigned:									
Shaded resources below are 24 hour									
Resource Identifier	ALS	LWD	Leader	Personnel	Request #	Hours	Reporting Location		
HC2 PVT LAVA RIVER C-11		9/1	BERTHA CHAVEZ	20	C-23	0700-1900	WARD FIELD CAMP		
HC2 PVT NORTH PACIFIC FORESTRY C-2		8/30	ANDREW KENT	20	C-2	0700-1900	WARD FIELD CAMP		
EST1 XSM 2276A **24hrs**		9/2	MATT SAMSON	22	E-95	0700-0700	WARD FIELD CAMP		
EST3 XME 2150C **24hrs**		9/1	MITCH FRANKLIN	20	E-86	0700-0700	WARD FIELD CAMP		
EST6 OES 2862F **24hrs**		9/2	BROOK BAKER	17	E-224	0700-0700	WARD FIELD CAMP		
EST1 OES 2802A		9/3	JOSE CASTREJON	21	E-241	0700-1900	WARD FIELD CAMP		
EST1 OES 2803A		9/3	JOEL ABELSON	21	E-242	0700-1900	WARD FIELD CAMP		
EST1 OES 5805A		9/4	RAYMOND RUSSELL	21	E-244	0700-1900	WARD FIELD CAMP		
EST6 OES 2861F		8/28	BRIAN METCHO	19	E-270	0700-1900	WARD FIELD CAMP		
ENG1 CRT E-5112		9/3	BEAU SMITH	4		0700-1900	WARD FIELD CAMP		
ENG4 PVT INBOUND 119		9/2	EVAN RUSSELL	3	E-119	0700-1900	WARD FIELD CAMP		
ENG4 PVT J3 208		9/2	JOSE ARIZMENDI	3	E-208	0700-1900	WARD FIELD CAMP		
ENG4 PVT J3 210		9/2	ANDRE KELLEY	3	E-210	0700-1900	WARD FIELD CAMP		
ENG4 PVT WILDFIRE 219		9/2	MIKE FOSTER	3	E-219	0700-1900	WARD FIELD CAMP		
ENG5 PVT FORREST 248		9/3	AARON VELA	3	E-248	0700-1900	WARD FIELD CAMP		
ENG6 PVT Y2 124		9/3	STANLEY VINCENT	3	E-124	0700-1900	WARD FIELD CAMP		
WTS1 CRT WT-5159		9/3	JASON BORGES	2		0700-1900	WARD FIELD CAMP		
WTS1 PVT NORTHSTATE 340		9/6	WILLIAM YENTSCH	1	E-340	0700-1900	WARD FIELD CAMP		
CHP2 PVT GRAYBACK 304		9/6	JARED COPURMOYER	3	E-304	0700-1900	WARD FIELD CAMP		
TFLD ILLINGWORTH		9/4	GAVIN ILLINGWORTH	1	O-252	0700-1900	WARD FIELD CAMP		
STEN(T) NAUSHA		9/7	DANIEL NAUSHA	1	O-254	0700-1900	WARD FIELD CAMP		
6. Work Assignments:									
Keep the fire north of Highway 199 and east of County Road 305 in order to protect the natural, cultural, and infrastructure values utilizing dozer and handline, firing where appropriate, and providing holding forces during operations. Prepare and defend structures in Highway 199 corridor and adjacent communities. Conduct damage assessment in areas that the fire has impacted.									
7. Special Instructions:									
-Be aware of retardant avoidance areas, mine shafts and naturally occurring asbestos.									
-Maintain awareness of fire conditions affecting road systems in your area that might be a primary escape route and establish secondary egress to safe area. Ensure trigger points are established and re-evaluated throughout the shift.									
REMS 1 & 4 assigned to Branch V									
8. Communications									
Name	Ch	Function	Rx Freq	Rx Tone	Tx Freq	Tx Tone	Mode	Notes	
NIFC C3	1	COMMAND	170.4250	(T3) 131.8	168.0750	(T3) 131.8	A	CAMP 6	
VFIRE 24	12	TACTICAL	154.2725	(T6) 156.7	154.2725	(T6) 156.7	A	GASQUET STR GROUP/NIG	
CALCORD	15	TACTICAL	156.0750	(T6) 156.7	156.0750	(T6) 156.7	A	EMS AIR COORDINATION	
A/G TAC	14	A/G TAC	169.4875	0.0	169.4875	0.0	A		
AIRGUARD	16	AIRGUARD	168.6250	0.0	168.6250	(T1) 110.9	A		
9. Prepared by: Name:									
			Hudley/Roberts/Nahas(t)/Sketo(t)/More no(t)			RESL			
						Signature: <i>Smareno</i>			
ICS 204		Date/Time: 8/25/2023 2200			Personnel Count: 211				


ASSIGNMENT LIST (ICS 204 WF)

CONTROLLED UNCLASSIFIED INFORMATION//BASIC

1. Incident Name:		2. Operational Period:				3. Branch		Division		
SMITH RIVER COMPLEX - SOUTH		Date From: 08/26/23	Date To: 08/27/23			XX		MM		
		Time From: 0700	Time To: 0700			Page 1 of 2		Mike-Mike		
4. Operations Personnel:										
Operations Section Chief: Scott Grasmick / Nick Cleary(t)				Planning Ops: Tom Himmelrich / Trevor Johnson						
Branch Director: Joe Tieso				Night Ops: Joe Reyes						
Division/Group Supervisor: Ron Oatman / Josh Fudge(t)				Air Attack:						
5. Resources Assigned:		**Shaded resources below are 24 hour**								
Resource Identifier	ALS	LWD	Leader	Personnel	Request #	Hours	Reporting Location			
WFM2 EAGLE LAKE WFM		9/6	DANE NESBITT	9	O-383	0700-1900	WARD FIELD CAMP			
ENG3 SQF 31		8/30	JOSE RIVIERA	5	E-281	0700-1900	WARD FIELD CAMP			
ENG3 GENESEE FIRE 932		8/30	JOSH BOYLES	5	E-1	0700-1900	WARD FIELD CAMP			
ENG3 PVT OUTBACK 249		8/30	JARED ANDRA	3	E-249	0700-1900	WARD FIELD CAMP			
ENG4 PVT IDAHO TRAILBLAZERS 159		9/1	OSVALDO ARENAS	3	E-159	0700-1900	WARD FIELD CAMP			
ENG4 PVT TETON 221		9/3	CASSY JOHNSON	4	E-221	0700-1900	WARD FIELD CAMP			
ENG6 WHISPERING PINES E66		8/30	GABE DONNEY	3	E-280	0700-1900	WARD FIELD CAMP			
ENG6 PVT FIRST STRIKE 118		9/2	JEFF PURITT	3	E-118	0700-1900	WARD FIELD CAMP			
ENG6 PVT IDAHO TRAILBLAZERS 160		9/2	EDDY GARCIA	3	E-160	0700-1900	WARD FIELD CAMP			
ENG6 PVT IMPERIA FORESTRY 203		9/2	LUCIANO GONZALEZ	3	E-203	0700-1900	WARD FIELD CAMP			
ENG6 PVT BLACKSTONE 354		9/6	JORDAN JESSEE	3	E-354	0700-1900	WARD FIELD CAMP			
DO22 STF 52		9/3	MIKE KNOTT	2	E-223	0700-1900	WARD FIELD CAMP			
DO22 PVT SMOKEY MTN 173		9/2	IKE TOMLINSON	2	E-173	0700-1900	WARD FIELD CAMP			
WTT2 AZ FIRE MEDICAL AUTH 106		8/26	JUSTIN MITTON	2	E-6	0700-1900	WARD FIELD CAMP			
WTT2 PVT 5J WATER 161		9/2	KEELY JACKSON	2	E-161	0700-1900	WARD FIELD CAMP			
CHP2 PVT NORTH ZONE 227		9/3	DARRIUS DEMERY	3	E-227	0700-1900	WARD FIELD CAMP			
CHP2 PVT SAYLOR 302		9/7	CALEB FINK	3	E-302	0700-1900	WARD FIELD CAMP			
CHP2 PVT PACIFIC RIDGELINE 303		9/7	JONATHAN CAMPBELL	3	E-303	0700-1900	WARD FIELD CAMP			
6. Work Assignments:										
Keep the fire South of Highway 199 in order to protect the natural, cultural, and infrastructure values utilizing dozer and handline, firing where appropriate, and providing holding forces during operations. Conduct damage assessment in areas that the fire has impacted.										
7. Special Instructions:										
-Be aware of retardant avoidance areas, mine shafts and naturally occurring asbestos.										
-Maintain awareness of fire conditions affecting road systems in your area that might be a primary escape route and establish secondary egress to safe area. Ensure trigger points are established and re-evaluated throughout the shift.										
Safety Officers assigned to Division MM: Bryon Shropshire										
REMS 2 & 3 assigned to Branch XX										
8. Communications										
Name	Ch	Function	Rx Freq	Rx Tone	Tx Freq	Tx Tone	Mode	Notes		
NIFC C3	1	COMMAND	170.4250	(T3) 131.8	168.0750	(T3) 131.8	A	CAMP 6		
NIFC T4	8	TACTICAL	166.7250	(T3) 131.8	166.7250	(T3) 131.8	A			
CALCORD	15	TACTICAL	156.0750	(T6) 156.7	156.0750	(T6) 156.7	A	EMS AIR COORDINATION		
A/G TAC	14	A/G TAC	169.4875	0.0	169.4875	0.0	A			
AIRGUARD	16	AIRGUARD	168.6250	0.0	168.6250	(T1) 110.9	A			
9. Prepared by: Name: Hudley/Roberts/Nahas(t)/Sketo(t)/More no(t) RESL										
Signature: <u>Smoreno</u>										
ICS 204		Date/Time: 8/25/2023 2200				Personnel Count: 61				

ASSIGNMENT LIST (ICS 204 WF)

CONTROLLED UNCLASSIFIED INFORMATION//BASIC

1. Incident Name:		2. Operational Period:				3. Branch		Division							
SMITH RIVER COMPLEX - SOUTH		Date From: 08/26/23	Date To: 08/27/23	Time From: 0700	Time To: 0700	XX		MM							
4. Operations Personnel:						Page 2 of 2		Mike-Mike							
Operations Section Chief: Scott Grasmick / Nick Cleary(t)				Planning Ops: Tom Himmelrich / Trevor Johnson											
Branch Director: Joe Tieso				Night Ops: Joe Reyes											
Division/Group Supervisor: Ron Oatman / Josh Fudge(t)				Air Attack:											
Shaded resources below are 24 hour															
5. Resources Assigned:															
Resource Identifier	ALS	LWD	Leader	Personnel	Request #	Hours	Reporting Location								
FMOD MOEN FALLERS 116		9/1	MICHEAL MOEN	2	O-116	0700-1900	WARD FIELD CAMP								
FMOD CHARLIE FALLERS 117		9/1	JOSIAH CLAYBORN	2	O-117	0700-1900	WARD FIELD CAMP								
FMOD CHARLIE FALLERS 154		9/1	DAN KECK	2	O-154	0700-1900	WARD FIELD CAMP								
TFLD MIRANDA		9/2	MATT MIRANDA	1	O-173	0700-1900	WARD FIELD CAMP								
TFLD(T) KOEPENICK		9/7	NICK KOEPENICK	1	O-362	0700-1900	WARD FIELD CAMP								
TFLD(T) LOWERY		9/6	SEAN LOWERY	1	O-295	0700-1900	WARD FIELD CAMP								
STEN BARKER		9/5	JASON BARKER	1	O-251	0700-1900	WARD FIELD CAMP								
STEN BRISTOL		9/6	NATHAN BRISTOL	1	O-256	0700-1900	WARD FIELD CAMP								
STEN(T) EISAN		9/5	NICK EISAN	1	O-253	0700-1900	WARD FIELD CAMP								
STEN(T) HANNAN		9/6	JOSHUA HANNAN	1	O-357	0700-1900	WARD FIELD CAMP								
HEQB FAWCETT		9/6	DANIEL FAWCETT	1	O-238	0700-1900	WARD FIELD CAMP								
EMPF HARDINA	X	9/1	BRANDON HARDINA	1	O-100	0700-1900	WARD FIELD CAMP								
EMTF BRISENDINE		9/2	CHAD BRISENDINE	1	O-103	0700-1900	WARD FIELD CAMP								
FOBS McCREA		8/30	DAVID McCREA	1	O-159	0700-1900	WARD FIELD CAMP								
FOBS RIVAS		8/30	JEFF RIVAS	1	O-160	0700-1900	WARD FIELD CAMP								
6. Work Assignments:															
Keep the fire South of Highway 199 in order to protect the natural, cultural, and infrastructure values utilizing dozer and handline, firing where appropriate, and providing holding forces during operations. Conduct damage assessment in areas that the fire has impacted.															
7. Special Instructions:															
-Be aware of retardant avoidance areas, mine shafts and naturally occurring asbestos.															
-Maintain awareness of fire conditions affecting road systems in your area that might be a primary escape route and establish secondary egress to safe area. Ensure trigger points are established and re-evaluated throughout the shift.															
Safety Officers assigned to Division MM: Bryon Shropshire															
REMS 2 & 3 assigned to Branch XX															
8. Communications															
Name	Ch	Function	Rx Freq	Rx Tone	Tx Freq	Tx Tone	Mode	Notes							
NIFC C3	1	COMMAND	170.4250	(T3) 131.8	168.0750	(T3) 131.8	A	CAMP 6							
NIFC T4	8	TACTICAL	166.7250	(T3) 131.8	166.7250	(T3) 131.8	A								
CALCORD	15	TACTICAL	156.0750	(T6) 156.7	156.0750	(T6) 156.7	A	EMS AIR COORDINATION							
A/G TAC	14	A/G TAC	169.4875	0.0	169.4875	0.0	A								
AIRGUARD	16	AIRGUARD	168.6250	0.0	168.6250	(T1) 110.9	A								
9. Prepared by: Name:															
Hudley/Roberts/Nahas(t)/Sketo(t)/More no(t)				RESL		Signature: 									
<table style="width: 100%; border: none;"> <tr> <td style="border: 1px solid black; width: 15%;">ICS 204</td> <td style="width: 35%;"></td> <td style="width: 15%;">Date/Time: 8/25/2023</td> <td style="width: 15%;">2200</td> <td style="width: 20%;"></td> <td style="width: 10%; text-align: right;">Personnel Count: 18</td> </tr> </table>										ICS 204		Date/Time: 8/25/2023	2200		Personnel Count: 18
ICS 204		Date/Time: 8/25/2023	2200		Personnel Count: 18										

ASSIGNMENT LIST (ICS 204 WF)

CONTROLLED UNCLASSIFIED INFORMATION//BASIC

1. Incident Name:	2. Operational Period:	3. Branch	Division
SMITH RIVER COMPLEX - SOUTH	Date From: 08/26/23 Date To: 08/27/23 Time From: 0700 Time To: 0700	XX	VV

4. Operations Personnel: Page 1 of 2 Victor-Victor

Operations Section Chief: Scott Grasmick / Nick Cleary(t)	Planning Ops: Tom Himmelrich / Trevor Johnson
Branch Director: Joe Tieso	Night Ops: Joe Reyes
Division/Group Supervisor: Michael Willardson / Kevin Montoya(t)	Air Attack:

5. Resources Assigned: **Shaded resources below are 24 hour**

Resource Identifier	ALS	LWD	Leader	Personnel	Request #	Hours	Reporting Location
HC2 PVT PACIFIC OASIS 15		9/3	ALEX HESS	20	C-15	0700-1900	WARD FIELD CAMP
HC2 PVT PONDEROSA 54		9/7	SAUL BECCERA	20	C-54	0700-1900	WARD FIELD CAMP
HC2 PVT THREE STRIPES 55		9/7	MELECIO CONTRER	20	C-55	0700-1900	WARD FIELD CAMP
EST6 OES 6805F	X	8/28	ROBERT PETERSON	18	E-271	0700-1900	WARD FIELD CAMP
ENG3 PVT ALPINE WF E-7		9/2	LEIF LARSON	3	E-220	0700-1900	WARD FIELD CAMP
ENG3 PVT ALPINE WF E-8		9/2	STEVEN VIGIL	1	E-121	0700-1900	WARD FIELD CAMP
ENG3 PVT SABINO 134		9/3	BRYAN CARDENAS	3	E-134	0700-1900	WARD FIELD CAMP
ENG4 PVT ID HEATSEEKER 233		9/3	HEATH ORABANEC	3	E-233	0700-1900	WARD FIELD CAMP
ENG4 PVT ID HEATSEEKER 234		9/3	AUSTIN WELLS	3	E-234	0700-1900	WARD FIELD CAMP
ENG4 PVT TANGO KILO 122		9/3	DON BEARD	3	E-122	0700-1900	WARD FIELD CAMP
ENG4 BLM IDTFD E2413		9/3	RAD KULASEVIC	5	E-251	0700-1900	WARD FIELD CAMP
ENG4 PVT PALLAS 133		9/3	FRED AVILA	3	E-133	0700-1900	WARD FIELD CAMP
ENG5 PVT RATTLESNAKE 209		9/2	RICHARD OROSCO	3	E-209	0700-1900	WARD FIELD CAMP
ENG5 PVT DB JET 127		9/3	PHILLIP CRISTIE	3	E-127	0700-1900	WARD FIELD CAMP
ENG5 PVT 3 RIVERS 137		9/4	MURRAY HANNAWEEKA	3	E-137	0700-1900	WARD FIELD CAMP
ENG5 PVT GCT LAND 2		9/5	ROBERT MCGIRR	3	E-2	0700-1900	WARD FIELD CAMP
ENG6 PVT AMERICAN 114		9/2	BILL MORRIS	3	E-114	0700-1900	WARD FIELD CAMP
ENG6 PVT PINO ONE 145		9/4	DARREN PINO	3	E-145	0700-1900	WARD FIELD CAMP
ENG6 PVT AMERICAN 151		9/2	LOUIS LIPHART	3	E-151	0700-1900	WARD FIELD CAMP
ENG6 PVT PACIFIC NW 237		9/3	RAMON IBARRA	3	E-237	0700-1900	WARD FIELD CAMP

6. Work Assignments:
Keep the fire South of Highway 199 and East of the South Fork/G-O roads in order to protect the natural, cultural, and infrastructure values utilizing dozer and handline, firing where appropriate, and providing holding forces during operations.

7. Special Instructions:
-Be aware of retardant avoidance areas, mine shafts and naturally occurring asbestos.
-Maintain awareness of fire conditions affecting road systems in your area that might be a primary escape route and establish secondary egress to safe area. Ensure trigger points are established and re-evaluated throughout the shift.
Safety Officers assigned to Division VV/PP: Keith Aggson(t)
REMS 2 & 3 assigned to Branch XX
REAFs: Berg, Gray

8. Communications

Name	Ch	Function	Rx Freq	Rx Tone	Tx Freq	Tx Tone	Mode	Notes
NIFC C3	1	COMMAND	170.4250	(T3) 131.8	168.0750	(T3) 131.8	A	CAMP 6
NIFC T6	10	TACTICAL	168.2500	(T3) 131.8	168.2500	(T3) 131.8	A	
CALCORD	15	TACTICAL	156.0750	(T6) 156.7	156.0750	(T6) 156.7	A	EMS AIR COORDINATION
A/G TAC	14	A/G TAC	169.4875	0.0	169.4875	0.0	A	
AIRGUARD	16	AIRGUARD	168.6250	0.0	168.6250	(T1) 110.9	A	

9. Prepared by: Name: Hudley/Roberts/Nahas(t)/Sketo(t)/More no(t) RESL Signature: *SMoreno*

ICS 204 Date/Time: 8/25/2023 2200 Personnel Count: 126

ASSIGNMENT LIST (ICS 204 WF)

CONTROLLED UNCLASSIFIED INFORMATION//BASIC

1. Incident Name:	2. Operational Period:	3. Branch	Division
SMITH RIVER COMPLEX - SOUTH	Date From: 08/26/23 Date To: 08/27/23 Time From: 0700 Time To: 0700	XX	VV


4. Operations Personnel:		Page 2 of 2	Victor-Victor
Operations Section Chief: Scott Grasmick / Nick Cleary(t)		Planning Ops: Tom Himmelrich / Trevor Johnson	
Branch Director: Joe Tieso		Night Ops: Joe Reyes	
Division/Group Supervisor: Michael Willardson / Kevin Montoya(t)		Air Attack:	

5. Resources Assigned:		**Shaded resources below are 24 hour**					
Resource Identifier	ALS	LWD	Leader	Personnel	Request #	Hours	Reporting Location
ENG6 PVT AAA THUNDER 115		9/2	LOGAN CATES	3	E-115	0700-1900	WARD FIELD CAMP
ENG6 PVT CRIDDLE 206		9/2	PAUL CRIDDLE	3	E-206	0700-1900	WARD FIELD CAMP
ENG6 PVT ID HEATSEEKER 235		9/3	WENDY JOHNSON	3	E-235	0700-1900	WARD FIELD CAMP
ENG6 PVT ID HEATSEEKER 236		9/3	JEEP DARRAH	3	E-236	0700-1900	WARD FIELD CAMP
ENG6 PVT DARE ENT 245		9/3	COOPER BERRY	3	E-245	0700-1900	WARD FIELD CAMP
DO22 PVT JUNGWORTH 171		9/2	PETE BROWN	2	E-171	0700-1900	WARD FIELD CAMP
WTT2 PVT NATIONAL 166		9/2	LUCAS SHAFFER	2	E-166	0700-1900	WARD FIELD CAMP
CHP2 PVT NORTH ZONE 228		9/3	KOBE HOUSTON	3	E-228	0700-1900	WARD FIELD CAMP
TFLD CHRISTY		8/31	KEVIN CHRISTY	1	O-369	0700-1900	WARD FIELD CAMP
STEN PEARSON		9/5	RYAN PEARSON	1	O-257	0700-1900	WARD FIELD CAMP
HEQB BULL		9/6	BRIAN BULL	1	O-248	0700-1900	WARD FIELD CAMP
HEQB RUIZ		9/6	JOSHUE RUIZ	1	O-266	0700-1900	WARD FIELD CAMP
HEQB GROSENBACH		9/7	MICHAEL GROSENBACH	1	O-272	0700-1900	WARD FIELD CAMP
EMPF STAMEY	X	9/2	SAM STAMEY	1	O-97	0700-1900	WARD FIELD CAMP
EMTF WILSON		9/1	TIM WILSON	1	O-101	0700-1900	WARD FIELD CAMP

6. Work Assignments:
 Keep the fire South of Highway 199 and East of the South Fork/G-O roads in order to protect the natural, cultural, and infrastructure values utilizing dozer and handline, firing where appropriate, and providing holding forces during operations.

7. Special Instructions:
 -Be aware of retardant avoidance areas, mine shafts and naturally occurring asbestos.
 -Maintain awareness of fire conditions affecting road systems in your area that might be a primary escape route and establish secondary egress to safe area. Ensure trigger points are established and re-evaluated throughout the shift.
Safety Officers assigned to Division VV/PP: Keith Aggson(t)
REMS 2 & 3 assigned to Branch XX
REAFs: Berg and Gray


8. Communications								
Name	Ch	Function	Rx Freq	Rx Tone	Tx Freq	Tx Tone	Mode	Notes
NIFC C3	1	COMMAND	170.4250	(T3) 131.8	168.0750	(T3) 131.8	A	CAMP 6
NIFC T6	10	TACTICAL	168.2500	(T3) 131.8	168.2500	(T3) 131.8	A	
CALCORD	15	TACTICAL	156.0750	(T6) 156.7	156.0750	(T6) 156.7	A	EMS AIR COORDINATION
A/G TAC	14	A/G TAC	169.4875	0.0	169.4875	0.0	A	
AIRGUARD	16	AIRGUARD	168.6250	0.0	168.6250	(T1) 110.9	A	

9. Prepared by: Name: Hudley/Roberts/Nahas(t)/Sketo(t)/More no(t) RESL
 Signature: 

ICS 204 Date/Time: 8/25/2023 2200 Personnel Count: 29

ASSIGNMENT LIST (ICS 204 WF)

CONTROLLED UNCLASSIFIED INFORMATION//BASIC

1. Incident Name:		2. Operational Period:				3. Branch		Division	
SMITH RIVER COMPLEX - SOUTH		Date From: 08/26/23	Date To: 08/27/23	Time From: 0700	Time To: 0700	XX		YY	
4. Operations Personnel:						Page 1 of 2 Yankee-Yankee			
Operations Section Chief: Scott Grasmick / Nick Cleary(t)				Planning Ops: Tom Himmelrich / Trevor Johnson					
Branch Director: Joe Tieso				Night Ops: Joe Reyes					
Division/Group Supervisor: Todd McNeal / Keith McMillen(t)				Air Attack:					
5. Resources Assigned:		**Shaded resources below are 24 hour**							
Resource Identifier	ALS	LWD	Leader	Personnel	Request #	Hours	Reporting Location		
HC1 TAHOE IHC		9/3	GERMAN GUERRERO	21	C-28	0700-1900	WARD FIELD CAMP		
HC2I GERONIMO		9/3	MARIO DIA	18	C-27	0700-1900	WARD FIELD CAMP		
HC2I SQF BLACK EAGLES		9/5	GUSTAVO SANTOYO	21	C-33	0700-1900	WARD FIELD CAMP		
HC2I KRN GOLDEN EMPIRE C10		9/6	NATHANIEL PREST	25	C-34	0700-1900	WARD FIELD CAMP		
HC2 PVT WEST COAST 16		9/3	JUAN RAMOS	20	C-16	0700-1900	WARD FIELD CAMP		
HC2 PVT BLUE MOUNTAIN 5		9/2	JUAN ESPINOSA	20	C-5	0700-1900	WARD FIELD CAMP		
ENG1 GASQUET E-75		8/28	WALTER FRYE	5		0700-1900	WARD FIELD CAMP		
ENG6 PVT KL FARMS E-02		9/2	STEPHEN TRAIN	3	E-120	0700-1900	WARD FIELD CAMP		
ENG6 PVT KL FARMS E-13		9/2	IAN SHELLY	3	E-147	0700-1900	WARD FIELD CAMP		
ENG6 PVT PIERCE FIRE 158		9/1	JORDAN HOEFLING	3	E-158	0700-1900	WARD FIELD CAMP		
ENG6 PVT GE FORESTRY 204		9/2	ARMANDO TOBAR	3	E-204	0700-1900	WARD FIELD CAMP		
ENG6 PVT TETON 222		9/3	RYAN TURNER	4	E-222	0700-1900	WARD FIELD CAMP		
DO22 PVT MORRISON 296		9/7	MATTHEW MORRISON	2	E-296	0700-1900	WARD FIELD CAMP		
DO22 PVT LEESVILLE 293		9/4	NATE RUBINI	2	E-293	0700-1900	WARD FIELD CAMP		
DO22 PVT KENNETH 294		9/5	KENNY DREW	1	E-294	0700-1900	WARD FIELD CAMP		
WTT2 GASQUET WT76		8/28	GUY LATHAM	2		0700-1900	WARD FIELD CAMP		
MBM2 PVT ZEB'S TREE 335		9/7	RON WAKE	2	E-335	0700-1900	WARD FIELD CAMP		
MBM2 PVT NORTHSTATE 230		9/4	TYLER WAITS	2	E-230	0700-1900	WARD FIELD CAMP		
GRD1 PVT LET-ER-BUCK 288		9/5	STEVE LASSEN	2	E-288	0700-1900	WARD FIELD CAMP		
EXC2 PVT ADAMS 298		9/5	STEVE ADAMS	2	E-298	0700-1900	WARD FIELD CAMP		
6. Work Assignments:									
Keep the fire South of Highway 199 and East of the South Fork/G-O roads in order to protect the natural, cultural, and infrastructure values utilizing dozer and handline, firing where appropriate, and providing holding forces during operations.									
7. Special Instructions:									
-Be aware of retardant avoidance areas, mine shafts and naturally occurring asbestos.									
-Maintain awareness of fire conditions affecting road systems in your area that might be a primary escape route and establish secondary egress to safe area. Ensure trigger points are established and re-evaluated throughout the shift.									
Safety Officers assigned to Division YY: Pat Cochrum									
REMS 2 & 3 assigned to Branch XX									
REAFs: Leonard, Meingast									
8. Communications									
Name	Ch	Function	Rx Freq	Rx Tone	Tx Freq	Tx Tone	Mode	Notes	
NIFC C3	1	COMMAND	170.4250	(T3) 131.8	168.0750	(T3) 131.8	A	CAMP 6	
VFIRE 22	11	TACTICAL	154.2650	(T6) 156.7	154.2650	(T6) 156.7	A		
CALCORD	15	TACTICAL	156.0750	(T6) 156.7	156.0750	(T6) 156.7	A	EMS AIR COORDINATION	
A/G TAC	14	A/G TAC	169.4875	0.0	169.4875	0.0	A		
AIRGUARD	16	AIRGUARD	168.6250	0.0	168.6250	(T1) 110.9	A		
9. Prepared by: Name: Hudley/Roberts/Nahas(t)/Sketo(t)/More no(t) RESL									
Signature: 									
ICS 204		Date/Time: 8/25/2023 2200				Personnel Count: 161			

ASSIGNMENT LIST (ICS 204 WF)

CONTROLLED UNCLASSIFIED INFORMATION//BASIC

1. Incident Name:	2. Operational Period:	3. Branch	Division
SMITH RIVER COMPLEX - SOUTH	Date From: 08/26/23 Date To: 08/27/23 Time From: 0700 Time To: 0700	NIGHT STR GRP	

4. Operations Personnel:		Page 1 of 1
Operations Section Chief: Scott Grasmick / Nick Cleary(t)	Planning Ops: Tom Himmelrich / Trevor Johnson	
Branch Director:	Night Ops: Joe Reyes	
Division/Group Supervisor: Ryan Edmondson / Jonathan Cripe(t)	Air Attack:	

5. Resources Assigned:	**Shaded resources below are 24 hour**						
Resource Identifier	ALS	LWD	Leader	Personnel	Request #	Hours	Reporting Location
HC2 PVT PONDEROSA 53		9/7	SERGIO BENCOMO	20	C-53	1900-0700	WARD FIELD CAMP
ENG4 PVT GRIZ ONE 126		9/4	CORY TABER	3	E-126	1900-0700	WARD FIELD CAMP
ENG4 PVT BLAZE RUNNER 128		9/4	AARON CARLSON	3	E-128	1900-0700	WARD FIELD CAMP
ENG4 PVT GRIZ ONE 129		9/4	JOHN CRAFT	3	E-129	1900-0700	WARD FIELD CAMP
ENG4 PVT BLAZE RUNNER 132		9/4	ADAN ESTRADA	3	E-132	1900-0700	WARD FIELD CAMP
ENG5 PVT TIMBERMAN 150		9/4	JONATHAN TALLUM	3	E-150	1900-0700	WARD FIELD CAMP
ENG6 PVT JNJ 125		9/4	NEIL WILLIAMS	3	E-125	1900-0700	WARD FIELD CAMP
ENG6 PVT FIRE SOLUTIONS 263		9/4	BRIANNE SHOMATE	3	E-263	1900-0700	WARD FIELD CAMP
ENG6 PVT FIRE SOLUTIONS 265		9/4	DEREK MESTROVICH	3	E-265	1900-0700	WARD FIELD CAMP
ENG5 PVT NORTH UTAH 266		9/7		3	E-266	1900-0700	WARD FIELD CAMP
ENG6 PVT BLAZE RUNNER 268		9/4	JERRY FUGATE	3	E-268	1900-0700	WARD FIELD CAMP
ENG6 PVT BLAZE RUNNER 269		9/4	COREY CAYWOOD	3	E-269	1900-0700	WARD FIELD CAMP
HEQB MATTSON		9/6	ERICK MATTSON	1	O-264	1900-0700	WARD FIELD CAMP
AMB2 EMERGENCY RESPONSE 91	X	9/2	JEFF KWIECIEN	2	E-91	1900-0700	WARD FIELD CAMP

6. Work Assignments:
Patrol, re-enforce, improve and continue work in Divisions and Structure Groups.

7. Special Instructions:
 -REMS available out of Gasquet.
 -Be aware of retardant avoidance areas, mine shafts and naturally occurring asbestos.
 -Maintain awareness of fire conditions affecting road systems in your area that might be a primary escape route and establish secondary egress to safe area. Ensure trigger points are established and re-evaluated throughout the shift.
Safety Officers assigned to Division Night: Lucas Lambert

8. Communications								
Name	Ch	Function	Rx Freq	Rx Tone	Tx Freq	Tx Tone	Mode	Notes
NIFC C3	1	COMMAND	170.4250	(T3) 131.8	168.0750	(T3) 131.8	A	CAMP 6
VFIRE 24	12	TACTICAL	154.2725	(T6) 156.7	154.2725	(T6) 156.7	A	
CALCORD	15	TACTICAL	156.0750	(T6) 156.7	156.0750	(T6) 156.7	A	EMS AIR COORDINATION
A/G TAC	14	A/G TAC	169.4875	0.0	169.4875	0.0	A	
AIRGUARD	16	AIRGUARD	168.6250	0.0	168.6250	(T1) 110.9	A	

9. Prepared by: Name: Hudley/Roberts/Nahas(t)/Sketo(t)/More no(t) RESL Signature: *Smoreno*

ICS 204 Date/Time: 8/25/2023 2200 Personnel Count: 56

AIR OPERATIONS SUMMARY ICS-220						Time Prepared 1900	Date Prepared Friday, August 25, 2023	Prepared By John Crotty/Steve Markason																									
Incident Name / Number		Sunrise	Startup	Cutoff	Sunset	Shutdown	Operational Period - Date		Operational Period - Time																								
SMITH RIVER COMPLEX - SOUTH / CA-SRF-000968		6:34	7:04	19:28	7:58:00 PM	20:28	Saturday August 26, 2023		0700-2100																								
General Remarks, Safety Notes, Hazards, Air Operations Special Equipment, etc. TRACK ALL DIPSITE LOCATIONS / NUMBER OF DIPS / GALLONS TAKEN. TRACK ALL DROP LOCATIONS / NUMBER OF DROPS / GALLONS DROPPED. All GPS DATA TO BE COLLECTED IN <u>DEGREES. MINUTES. DECIMAL MINUTES</u> FORMAT. <i>AVOID Aerial Application of Retardant / Foam / Agent within 300' of Waterways, Bodies of Water, etc. If Retardant / Foam / Agent is Dropped Within These Areas Immediately Notify the AOB and Provide the Following Information: Lat / Long, Estimated Number of Gallons and a Map Detailing The Area. Watch for Powerlines. Caution when operating in non-TFR areas.</i>						Helibase Information Name Gasquet Latitude 41 50.667 Longitude 123 59.455 Name Cave Junction Latitude 42 06.250 Longitude 123 40.916 (use page 2 if needed)		TFR Information Request # Rectangle NM Altitude: 8,000 MSL Multi Lat Multi Long Centerpoint: NOTAMS: 3/1109 Frequency 126.0750 http://tfr.faa.gov/tfr2/list.html		Rescue Ship Information <table border="1"> <thead> <tr> <th colspan="2">Day Hoist</th> <th colspan="2">Night Hoist</th> </tr> </thead> <tbody> <tr> <td>Name</td> <td>CHP H14</td> <td colspan="2">SAC METRO 1</td> </tr> <tr> <td>Phone</td> <td></td> <td colspan="2"></td> </tr> <tr> <td>Make/Model</td> <td>Astar B3</td> <td colspan="2">Bell 212</td> </tr> <tr> <td>Location</td> <td>Redding</td> <td colspan="2">Benton</td> </tr> </tbody> </table> Request Procedure for These Aircraft: See Below for OR Aircraft See Medical Plan For Additional Info				Day Hoist		Night Hoist		Name	CHP H14	SAC METRO 1		Phone				Make/Model	Astar B3	Bell 212		Location	Redding	Benton	
														Day Hoist		Night Hoist																	
Name	CHP H14	SAC METRO 1																															
Phone																																	
Make/Model	Astar B3	Bell 212																															
Location	Redding	Benton																															
Frequencies	TX	Tone	RX	Tone	AM / FM	Position	Name	Phone	Trainee	Phone																							
Command-South	168.0750	(T3) 131.8	170.4250	(T3) 131.8	FM	AOBD	John Crotty	805-440-6186																									
Command-North Bowlan	162.6125	(T31) 186.2	170.5000	(T17) 67.0	FM	ASGS	Curt Warner	805-478-1231																									
Command-North Fiddler	162.6125	(T30) 179.9	170.5000	(T17) 67.0	FM	HEBM	George Leita (Cave)	360-581-8428																									
AIR / GROUND - TACTICAL	169.4875	0.0000	169.4875	0.0000	FM	HEBM	Natalie Bench (Crescent)	928-358-0863																									
AIR/AIR ROTARY WING	123.7250	0.0000	123.7250	0.0000	AM	HLCO	Casey Jones	559-696-3878	Antonio Jimenez	530-310-5797																							
TFR	126.0750	0.000	126.0750	0.0000	AM	ATGS	Rick Thompson	970-209-6989																									
AIR TACTICS	173.7000	0.0000	173.7000	0.0000	FM	ATGS	Lucas Rhea	702-521-8406																									
AIR/GROUND COMMAND	173.8500	0.0000	173.8500	0.0000	AM	UR31	Steve Ramaekers	208-473-8708																									
VMED 29-MEDICAL North	155.3475	156.7	155.3475	156.7	AM	UR32	Zach Freundlich	508-380-1904																									
TOLC	168.1375	0.0000	168.1375	0.0000	FM	NORTH AOBD	Steve Markason	307-690-5185																									
CALCORD - MEDICAL South	156.0750	156.7 (6)	156.0750	156.7 (6)	FM	NORTH ASGS	Bert Smith (T)	406-660-7371																									
AIRGUARD - Emergency Only	168.6250	110.9 (1)	168.6250	0.0000	FM		Cave Helibase	208-891-6878		ivhb2023@gmail.com																							
HELICOPTERS (Use page 2 if Needed)																																	
FAA #	Type	Make/Model	Helibase	Avail	Start	Remarks	FAA #	Type	Make/Model	Helibase	Avail	Start	Remarks																				
HT 16FH	1	UH-60	Cave	0800	0830	LL BUCKET	HB 625CK	1	S-61N	Merlin	0800	0830	LL BUCKET																				
HB 534VG	1	UH-60	Cave	0800	0830	LL BUCKET	HT 917	1	S-61	Merlin	0800	0830	LL TANK																				
HB 391SH	1	UH-60	Cave	0800	0830	LL BUCKET	H-18BH	3	Bell 407	Cave	0800	0830	HLCO																				
HB 699RH	1	KMAX	Cave	0800	0830	LL BUCKET	H-132BH	3	AS-350B3	Cave	0800	0830	PAX/RECON/LL/PSD																				
H-527	2	Bell 212	Cave	0800	0830	LL BUCKET	H-942AE	3	AS-350B3E	Crescent	0800	0830	PAX/RECON/LL/PSD																				
UR31	3	Alta X	Gasquet	TBD	TBD	IR/PSD	UR32	3	Alta X/DJI	Cave	TBD	TBD	IR/PSD																				
UR33	3	Alta X	Gasquet	TBD	TBD	IR Eagle Lake WFM	UR34	3	Alta X/DJI	Cave	TBD	TBD	IR/PSD																				
							UR35	3	DJI M800	Cave	TBD	TBD	IR/PSD																				
SOUTH	MEDICAL A/C						NORTH	MEDICAL A/C																									
TBD	3	MH-65	Humboldt			Coast Guard	20695	1	HH-60M	Roseburg			OR National Guard																				
H-902	2	UH1	Kneeland			Cal Fire	H-38HX	3	AS-250B3	Sun River			Shorthaul - 187 nm																				
FIXED WING (Use Page 2 if Needed)																																	
FAA #	Type	Make/Model	Base	Avail	Start	Remarks	FAA #	Type	Make/Model	Base	Avail	Start	Remarks																				
N-7MZ	1	C-501	RDD	0800	0830	ATGS (RDD)	N-688TM	1	AC-680V	MED	800	830	ATGS (MFR)																				

HEALTH AND SAFETY MESSAGE

Life First: Stop, Think, Talk then Act.

INCIDENT: **Smith River Complex South**

DATE: 8.26 Day \ 8.27 Night

Major Hazards and Risks:

- ❖ **STEEP TERRAIN:** Watch your footing at all times in steep terrain.
- ❖ **ROLLING ROCKS:** Watch and listen for rolling rocks...they are coming down.
- ❖ **DEHYDRATION:** Remember to drink 4-6 quarts of fluid each operational period.
- ❖ **DRIVING:** Keep speeds down and lights on. These roads present a variety of hazards.
- ❖ **HAZARD TREES:** Assess ALL Trees in Work Area. In addition to suppression and mop-up operations, assess hazard trees where you sleep or take breaks.

Narrative: The Fire Orders and Watch Outs in your IRPG are not just reading material. They are to be taken seriously and should be second nature in everything you do on the fire every day. Just as you get on a bike and ride it, those orders and watch outs should be second nature to you and if you aren't sure you should look it up. Don't short cut it or think you have a better way of doing it because unfortunately a good portion of the IRPG is written out of tragedy.

DRIVING

- **Make sure you know where the other resources are in your division.**
- **Know your way out and safety zone locations if you need to pull back.**
- **Ensure vehicles are properly positioned on the fire for easy egress.**
- **Increase spacing on dirt and dusty roads.**
- **Although some roads are closed, don't assume the public will not get in there.**
- **Access the stability of the road shoulder before attempting to turn around on mountain roads.**
- **Exercise caution on Hwy 199, you know the hazards.**

HAZARD TREE SAFETY

Hazard Tree Indicators:

- ✓ **Trees that have burned**
- ✓ **Shallow tree root systems**
- ✓ **Dead & broken top trees**
- ✓ **Leaning or hung up trees**
- ✓ **Many trees have no indicators**

Feeling comfortable?



Rick Bertram -Team Safety 925 588 6109

ICS 205 - INCIDENT RADIO COMMUNICATIONS PLAN

CONTROLLED UNCLASSIFIED
INFORMATION//BASIC

1. Incident Name: SMITH RIVER COMPLEX - SOUTH Incident Channels			2. Date/Time Prepared Date: 08/25/2023 Time: 1930			3. Operational Period: Date From: 08/26/23 Date To: 08/27/23 Time From: 0700 Time To: 0700				
4. Communications										
Ch#	Function	Name	Assigned To	Rx Freq	Rx Tone	Tx Freq	Tx Tone	Mode	Notes	
1	COMMAND	NIFC C3	ALL DIVS	170.4250	(T3) 131.8	168.0750	(T3) 131.8	A	CAMP 6	
2	COMMAND	NIFC C34	ALL DIVS	173.9750	(T3) 131.8	164.8625	(T3) 131.8	A	MONKEY RIDGE	
3	COMMAND	NIFC C35	ALL DIVS	173.8625	(T3) 131.8	163.8250	(T3) 131.8	A	SHIP MTN LOOKOUT	
4	COMMAND	NIFC C48	ALL DIVS	165.4625	(T3) 131.8	162.1750	(T3) 131.8	A	HIGH DIVIDE	
5	FUTURE	NIFC C55	NOT IN USE	173.8375	(T3) 131.8	165.5125	(T3) 131.8	A	FUTURE USE	
6	TACTICAL	NIFC T1	D, NIGHT A/B/D	168.0500	(T3) 131.8	168.0500	(T3) 131.8	A		
7	TACTICAL	NIFC T3	A	168.6000	(T3) 131.8	168.6000	(T3) 131.8	A		
8	TACTICAL	NIFC T4	MM, B	166.7250	(T3) 131.8	166.7250	(T3) 131.8	A		
9	TACTICAL	NIFC T5	PP, DIVIDE STR GP	166.7750	(T3) 131.8	166.7750	(T3) 131.8	A		
10	TACTICAL	NIFC T6	SS, VV, CONTINGENCY	168.2500	(T3) 131.8	168.2500	(T3) 131.8	A		
11	TACTICAL	VFIRE 22	YY, NIGHT YY	154.2650	(T6) 156.7	154.2650	(T6) 156.7	A		
12	TACTICAL	VFIRE 24	GASQT/NIGHT STR GP	154.2725	(T6) 156.7	154.2725	(T6) 156.7	A	GASQUET STR GROUP/NIGHT STR GROUP	
13	A/G CMD	A/G CMD	ALL DIVS	173.8500	0.0	173.8500	0.0	A	OPS, BRANCH AND DIVISION USE	
14	A/G TAC	A/G TAC	ALL DIVS	169.4875	0.0	169.4875	0.0	A	AIR TO GROUND TACTICAL	
15	TACTICAL	CALCORD	ALL DIVS	156.0750	(T6) 156.7	156.0750	(T6) 156.7	A	EMS AIR COORDINATION	
16	AIRGUARD	AIRGUARD	ALL DIVS	168.6250	0.0	168.6250	(T1) 110.9	A	EMERGENCY	
17										
18										
19										
20	AIRGUARD	AIRGUARD	ALL DIVS	168.6250	0.0	168.6250	(T1) 110.9	A	EMERGENCY	
5. Special Instructions CURRENT CLONE: SSRC825. COMMAND CHANNELS LINKED. FIND WHICH ONE WORKS BEST IN YOUR OPERATIONAL AREA. SMITH RIVER COMPLEX - SOUTH COMMUNICATIONS PHONE # 760-220-2863										
6. Prepared by (Communications Unit Leader): Name: CHRIS OLIVER COML(t)						Signature: <i>Chris Oliver</i>				
ICS 205 - CONTROLLED UNCLASSIFIED INFORMATION//BASIC					NIMS IAP	Date/Time: 08/25/23		1930		

ICS 205 - IA ZONE INCIDENT RADIO COMMUNICATIONS PLAN

CONTROLLED UNCLASSIFIED INFORMATION//BASIC

1. Incident Name: SMITH RIVER COMPLEX - SOUTH Page 2			2. Date/Time Prepared Date: 08/25/2023 Time: 1930			3. Operational Period: Date From: 08/26/23 Date To: 08/27/23 Time From: 0700 Time To: 0700				
4. Communications										
Ch#	Function	Name	Assigned To	Rx Freq	Rx Tone	Tx Freq	Tx Tone	Mode	Notes	
1	FOREST	SRF 12	I/A CMD	172.3750	0.0	164.1750	(T12) 127.3	A	GORDON MOUNTAIN, TONE 12	
2	FOREST	SRF 4	I/A CMD	172.3750	0.0	164.1750	(T4) 136.5	A	SHIP MOUNTAIN, TONE 4	
3	FOREST	SRF 1	I/A CMD	172.3750	0.0	164.1750	(T1) 110.9	A	MONKEY RIDGE, TONE 1	
4	DISPATCH	HUU RPT	DISPATCH	151.2500	(T1) 110.9	159.4050	(T14) 151.4	A	Tx 151.4 T14, Rx 110.9 T1	
5	TACTICAL	NIFC T2	I/A TAC	168.2000	0.0	168.2000	0.0	A	NIFC TAC 2	
6	TACTICAL	R5 T4	I/A TAC	166.5500	0.0	166.5500	0.0	A	R-5 TAC 4	
7	TACTICAL	R5 T5	I/A TAC	167.1125	0.0	167.1125	0.0	A	R-5 TAC 5	
8	TACTICAL	R5 PROJ	I/A TAC	168.6625	0.0	168.6625	0.0	A	R5 PROJECT	
9	TACTICAL	VTAC 14	I/A TAC	159.4725	(T6) 156.7	159.4725	(T6) 156.7	A	Tx/Rx 156.7 Tone 6	
10	TACTICAL	CDF T3	I/A TAC	151.1750	(T16) 192.8	151.1750	(T16) 192.8	A	CDF Tac 3 Tx/Rx 192.8 Tone 16	
11	TACTICAL	R5 T6	I/A TAC	168.2375	0.0	168.2375	0.0	A	R-5 TAC 6	
12	LOCAL	GASQ>16	LOCAL	154.4150	0.0	154.0100	(T16) 192.8	A	Gasquet VFD Rpt Tx 192.8 Tone 16	
13	A/G	AG-43	ALL DIVS	167.6000	0.0	167.6000	0.0	A	AIR TO GROUND PRIMAR	
14	A/G	AG-08	ALL DIVS	166.8750	0.0	166.8750	0.0	A	AIR TO GROUND SECONDARY	
15	TACTICAL	CALCORD	MEDICAL EVAC	156.0750	(T6) 156.7	156.0750	(T6) 156.7	A	EMS AIR COORDINATION	
16	AIRGUARD	AIRGUARD	EMERGENCY	168.6250	0.0	168.6250	(T1) 110.9	A	EMERGENCY	
17										
18										
19										
20	AIRGUARD	AIRGUARD	ALL DIVS	168.6250	0.0	168.6250	(T1) 110.9	A		
5. Special Instructions										
CLONE NAME: SSRCA25 SMITH RIVER COMPLEX SOUTH IA ZONE										
6. Prepared by (Communications Unit Leader): Name: CHRIS OLIVER COML(t)						Signature: <i>Chris Oliver</i>				
ICS 205 - CONTROLLED UNCLASSIFIED INFORMATION//BASIC					NIMS IAP	Date/Time: 08/25/23		1930		

INCIDENT RADIO COMMUNICATIONS PLAN (ICS 205)

Controlled Unclassified Information//Basic

1. Incident Name:	2. Date/Time Prepared:	3. Operational Period:	
SMITH RIVER COMPLEX NORTH	Date: 08/25/2023 Time: 18:00	Date/Time From: 08/26/2023 0600	Date/Time To: 08/27/2023 0600

4. Basic Radio Channel Use:										
Zone Group	Ch #	Function	Channel Name/Trunked Radio System Talkgroup	Assignment	RX Freq	RX Tone/NAC	TX Freq	TX Tone/NAC	Mode (A,D, or M)	Remarks
	1	TACTICAL	TAC 1	UNASSIGNED	168.0500	192.8	168.0500	192.8	A	UNASSIGNED
	2	TACTICAL	TAC 2	DIV I	168.2000	192.8	168.2000	192.8	A	
	3	TACTICAL	TAC 3	DIV K	168.6000	192.8	168.6000	192.8	A	
	4	TACTICAL	TAC 4	STRUCTURE E	166.7250	192.8	166.7250	192.8	A	
	5	TACTICAL	TAC 5	DIV H	166.7750	192.8	166.7750	192.8	A	
	6	TACTICAL	TAC 6	STRUCTURE W	168.2500	192.8	168.2500	192.8	A	
	7	CMD	CMD 7	ALL DIV	172.9875	162.2	165.0500	162.2	A	BOLAN MOUNTAIN (E)
	8	CMD	CMD 8	ALL DIV	170.3000	162.2	164.0000	162.2	A	FIDDLER MOUNTAIN (N)
	9	CMD	CMD 9	ALL DIV	169.0750	162.2	162.4125	162.2	A	MONKEY CR RIDGE (S)
	10	TACTICAL	VTAC 11	UNASSIGNED	151.1375	156.7	151.1375	156.7	A	UNASSIGNED
	11	TACTICAL	NIFC T1	DIV D	168.0500	131.8	168.0500	131.8	A	
	12	TACTICAL	NIFC T4	DIV MM	166.7250	131.8	166.7250	131.8	A	
	13	AIR TO GROUND	A/G CMD	ALL DIVS	173.8500	000.0	173.8500	000.0	A	BRANCH AND DIVISION USE
	14	AIR TO GROUND	A/G TAC	ALL DIVS	169.4875	000.0	169.4875	000.0	A	AIR TO GROUND TACTICAL
	15	AIR MEDICAL	VMED 29	ALL DIVS	155.3475	156.7	155.3475	156.7	A	EMS AIR COORDINATION
	16	AIR TO GROUND	AIRGUARD	ALL DIVS	168.6250	000.0	168.6250	110.9	A	EMERGENCY AIRCRAFT CONTACT

5. Special Instructions:

6. Prepared By COML	Name: Bruce Hanna	Signature: /s/ Bruce Hanna
ICS 205	IAP Page	Date/Time: 8/25/2023 18:00

FINANCE MESSAGE

1. Incident Name:
SMITH RIVER COMPLEX - SOUTH

2. Operational Period: Date From: 8/26/2023 Date To: 8/27/2023
Time From: 0700 Time To: 0700

CTR and Shift Tickets:

-If you have the ability to scan a QR code with your smartphone, scan the QR code at the bottom this page to get a fillable CTR or shift tickets. Using a .pdf format, you can scan and fill, then email to your Supervisor on the incident for signature and submission.

-Another option is to complete a paper CTR / Shift Ticket, get it signed by your supervisor on the fire, and take a picture of it.

E-mailing CTRs and Shift Tickets

Subject line: SOUTH TIME

Include your Resource #

Email to: 2023.smithrivercomplex.finance@firenet.gov

-If you are emailing your CTR, SHIFT TICKET, or any type of pay documentation to FINANCE, please put SOUTH TIME in the subject line.

-This email can be used to submit finance check-in documents too, like manifests, copies of resource orders, AD casual hire forms, receipts, etc. Be sure to include your Resource Order number somewhere in the body of the email.

-You're encouraged to submit time every two days if possible to stay current, and...

Contact us from: 0530 to 2200

Personnel Phone # 669-206-2317

Equipment/Contract Time Phone # 669-206-2316

REMEMBER, HARD PAPER COPIES OF DOCUMENTS ARE ALWAYS WELCOME TOO!!

E-mail QR



CTR/Shift Tickets



Smith River Complex Fire Information

Name the six rivers that the Six Rivers National Forest is named after?

Answer: The forest is named after the 1. Eel, 2. Van Duzen, 3. Klamath, 4. Trinity, 5. Mad and 6. Smith rivers, which pass through or near the forest's boundaries. The Six Rivers National Forest is a U.S. National Forest located in the northwestern corner of California. It was established on June 3, 1947 by U.S. President Harry S. Truman from portions of Klamath, Siskiyou and Trinity National Forests. Its over one million acres (4,000 km²) of land contain a variety of ecosystems and 137,000 acres (550 km²) of old growth forest.[1] It lies in parts of four counties; in descending order of forestland area they are Del Norte, Humboldt, Trinity, and Siskiyou counties.



Contacts

2023.smithrivercomplex@firenet.gov

Phone: 707.383.9727

Snail Mail

Name, E# or O#

c/o Smith River Complex Incident

Del Norte Fairgrounds

421 U.S. 101

Crescent City, CA 95531

More: including maps and Facebook pages.





CAL OES 5262



<-- PLEASE CHECK IN

*Please take a picture of the QR Code
and save for reference. All links for
OES are in our LinkTree*

CONTACT INFORMATION

OES ASST. CHIEF - RYAN WAKEFIELD

1-916-704-3445

OES 5262 SUPPORT PERSONNEL

1-916-761-4901

caloes5262@gmail.com



Smith River Complex Incident: Resource Advisor Message

IMPORTANT: Yellow/Black Striped flagging indicates resource **AVOIDANCE** areas.

Cultural and Heritage Resources:

The area you are working in is rich in cultural and heritage resources which may be encountered while fighting fire. When potential cultural or heritage resource are encountered, that they are not disturbed. There is a potential that undocumented cultural resources will be encountered while fighting fire. It is important when a potential cultural resource is encountered that they are not disturbed in any manner.



GPS its location and take a photo, but do not remove or collect anything. Findings of cultural resources should not be reported over the radio. Work with your division to notify a resource advisor for recommendations on how to proceed.

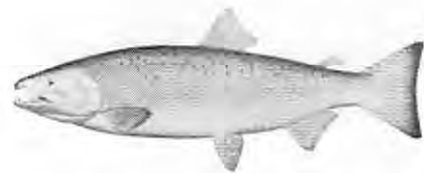
Invasive Plant Species – PLEASE USE WEED WASH



The area in and around the Smith River Complex, are home to many sensitive species. Infestations of highly invasive plant species are one of the largest threats to sensitive species populations here. Spread via vehicles and foot traffic as well as re-activation via fire is of high concern. To help protect these sensitive places, do not park in and try to avoid areas flagged areas. **Make sure to visit the WEED WASH at end of shift AND at demob.** Located on Hwy 199 on the right just past the Ranger Station.

Fish Screens: Coho Salmon Critical Habitat

Most rivers and streams in this area are considered critical habitat for Threatened Coho salmon. Please ensure that Mark 3 and Engine/Tender suction hoses have the appropriate screen attached. Talk to a READ if you think you need a screen!



Port Orford Cedar root disease

Some local drainages are infected with a root disease that spreads via mud and water. To prevent spreading this disease to uninfected areas, all water tenders and engines will apply bleach to their tanks in a 1:1000 ratio (using bleach with 6.0 % Sodium hypochlorite). Talk to a READ if you need some bleach!

TRAINING SPECIALIST MESSAGE

**A Training Specialist is on the incident.
All federal, state, and local government agency
trainees working on position task books will need
to register with the Incident Training Specialist in
order to receive proper credit for your
assignment.**

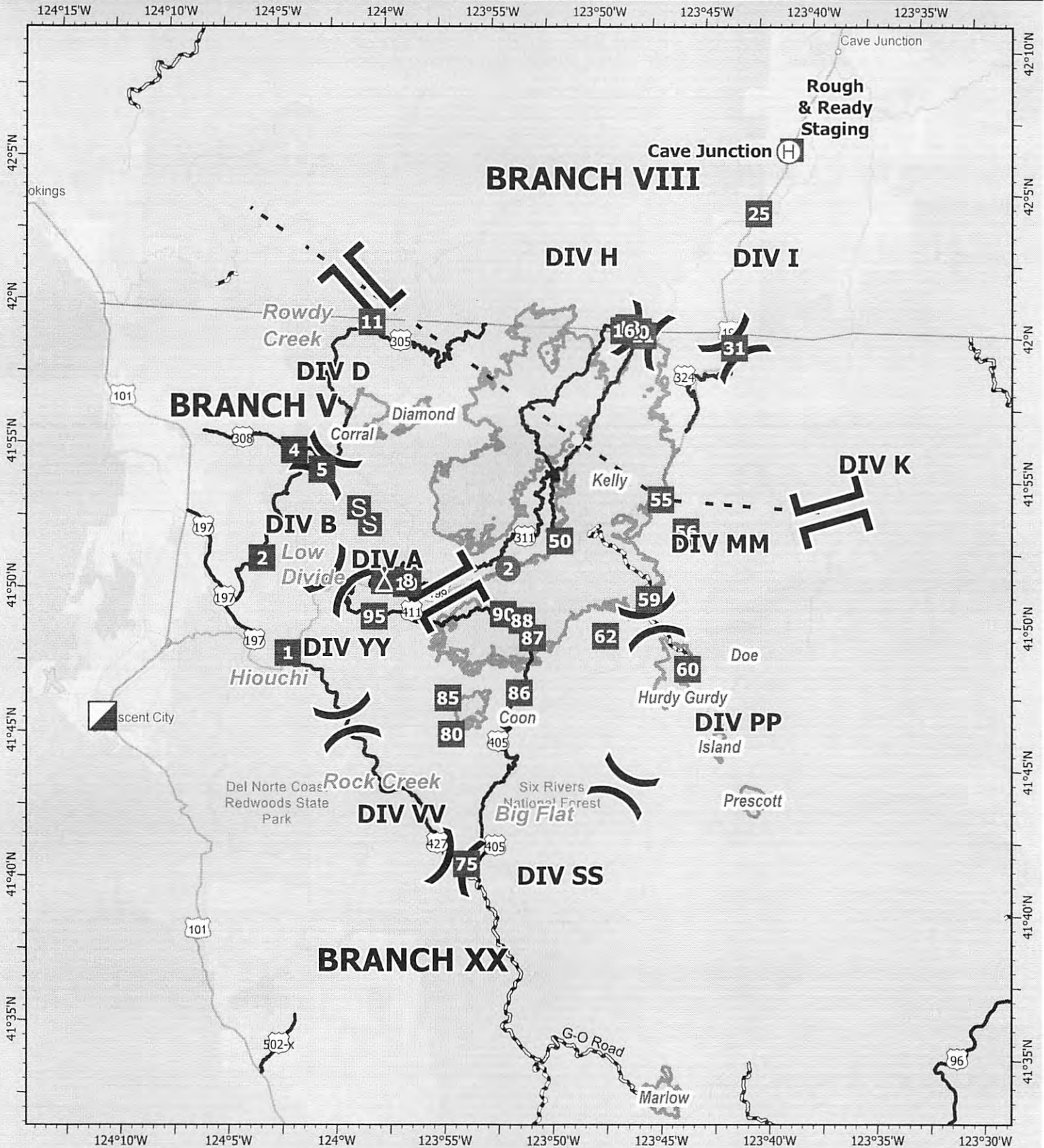
**The TNSP desk is in ICP trailer row.
PLEASE CALL or TEXT if you have any questions.**

*John LeBlanc
Training Specialist*

john_leblanc@firenet.gov
209.471.7229



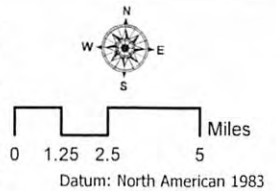
Sign in training



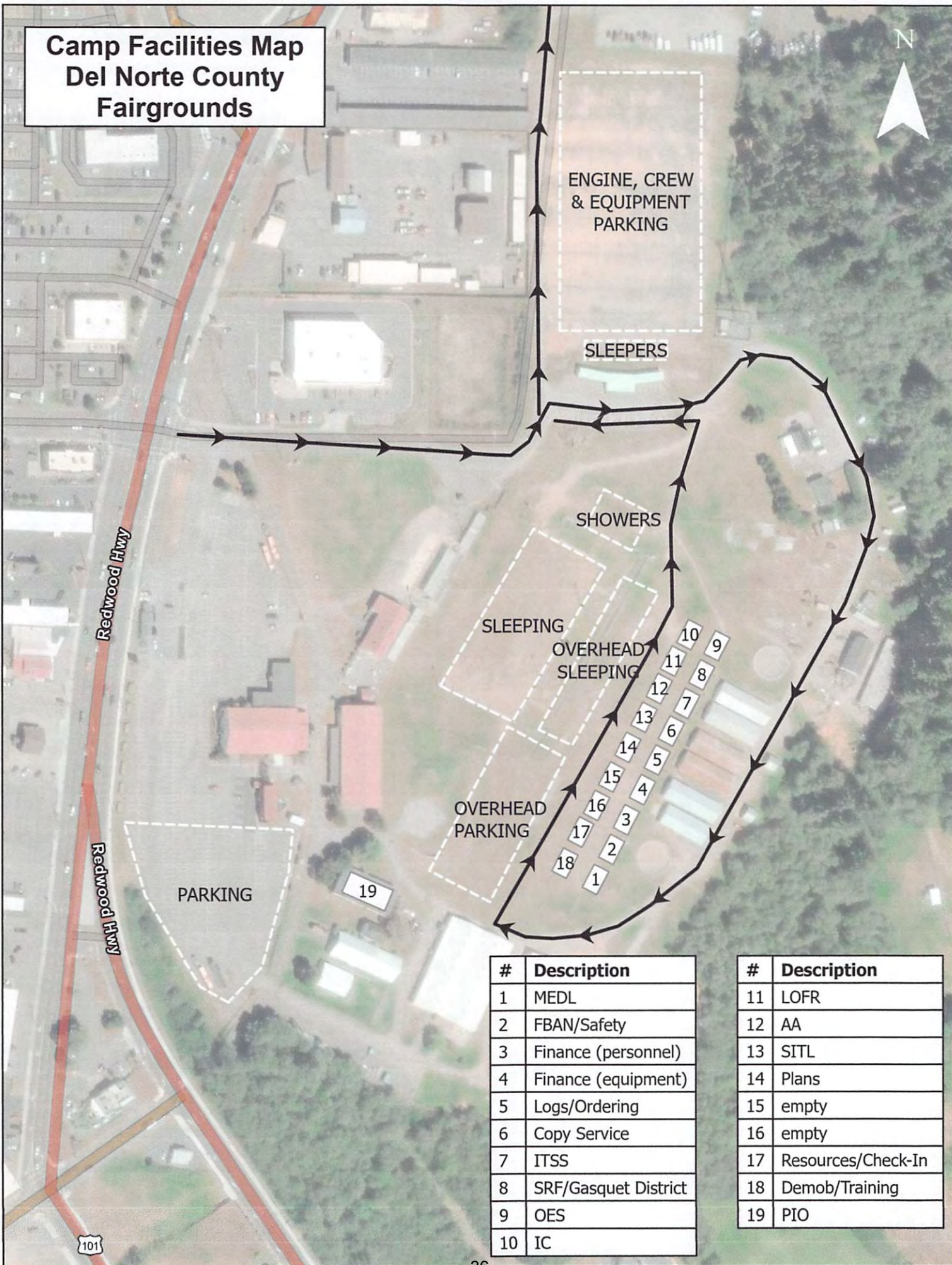
SMITH RIVER COMPLEX - SOUTH

CA-SRF-000968
August 26, 2023

- Wildfire Daily Fire Perimeter
- Highlighted Feature
- County Road
- Paved or Gravel
- Paved
- Helispot
- Helibase
- Division Break
- Branch Break
- Incident Command Post
- Drop Point
- Camp
- Staging Area



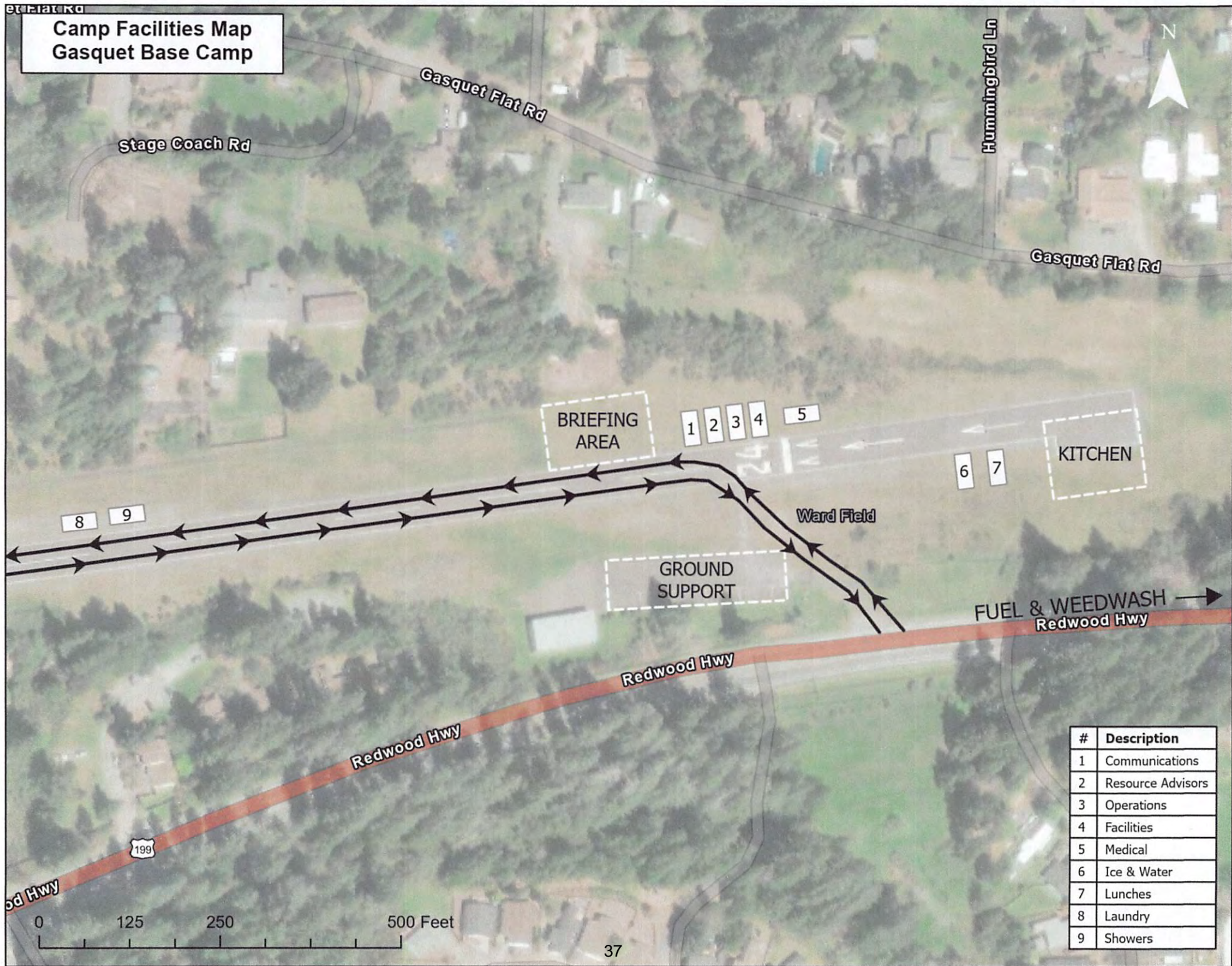
Camp Facilities Map Del Norte County Fairgrounds



#	Description
1	MEDL
2	FBAN/Safety
3	Finance (personnel)
4	Finance (equipment)
5	Logs/Ordering
6	Copy Service
7	ITSS
8	SRF/Gasquet District
9	OES
10	IC

#	Description
11	LOFR
12	AA
13	SITL
14	Plans
15	empty
16	empty
17	Resources/Check-In
18	Demob/Training
19	PIO

**Camp Facilities Map
Gasquet Base Camp**



#	Description
1	Communications
2	Resource Advisors
3	Operations
4	Facilities
5	Medical
6	Ice & Water
7	Lunches
8	Laundry
9	Showers

MEDICAL PLAN (ICS 206)

1. Incident Name: SMITH RIVER COMPLEX - SOUTH	2. Operational Period:	Date From:	8/26/23	Date To:	8/27/23
		Time From:	0700	Time To:	0700

3. INCIDENT MEDICAL AID STATIONS

MEDICAL AID STATIONS	LOCATION	R.N. & EMT	
		YES	NO
Frontline Medical Support	Base Camp - Ward Field, Gasquet	X	

4.a. AIR AMBULANCES

NAME	LOCATION	CONTACT	PARAMEDICS	
			YES	NO
Air Ambulance / Type 3	Medford, OR	South Smith Communications	X	
CHP (Daytime only Hoist) / Type 3	Redding, CA	South Smith Communications	X	
Coast Guard (Day/Night Hoist) / Type 3	Humbolt Bay, CA	South Smith Communications		X
Reach Air Medical Type 3	Brookings, OR	South Smith Communications	X	
Cal Fire (Hoist)	Kneeland, CA	South Smith Communications	X	

4.b. GROUND AMBULANCES & REMS

NAME	LOCATION	PARAMEDICS	
		YES	NO
Ambulance 1 (Mountain Medics)	DP 1	X	
Ambulance 2 (Mountain Medics)	DP 90	X	
Ambulance 4 (LMR F.D.)	DP 5	X	
REMS 1 (North County F.D.)	Branch XX		X
REMS 2 (Remote Access Medical)	Branch V	X	
REMS 3 (Blackwoods Emergency Resources)	Branch V	X	
REMS 4 (Blackwoods Emergency Resources)	Branch XX	X	

5. HOSPITALS - GPS DATUM - WGS 84

NAME	ADDRESS	TRAVEL TIME		PHONE LAT, LONG	HELIPAD		BURN CENTER	
		AIR	GRND		YES	NO	YES	NO
Sutter Coast Hospital (Level 4 Trauma Center)	800 E. Washington Blvd. Crescent City CA.		25 min.	707-464-8888 Lat: 41 46.454 Long: 124 11.537		X		X
Rogue Regional Medical (Level 2 Trauma Center)	2825 E Barnett Rd. Medford, OR	35 min.	4.5 hrs	541-789-7178 Lat: 42 19.10 Long: 122 49.50	X OR99			X
Mercy Medical Center (Level 2 Trauma Center)	2175 Rosaline Ave. Redding, CA	55 min.	4.5 hrs.	530-225-6000 Lat: 40 34.14 Long: 122 23.97	X 7CA3			X
UC Davis Medical Center (Level 1 Trauma & Burn)	2315 Stockton Blvd. Sacramento, CA	1.5 hr.	7 hrs.	916-734-3636 Lat: 38 33.20 Long: 121 27.28	X 3CLO		X	

6. MEDICAL EMERGENCY PROCEDURES

<p align="center">LINE "MEDICAL EMERGENCY" PLAN:</p> <p>Crew Supervisor to contact Division Supervisor/Operations with:</p> <ul style="list-style-type: none"> • Patient Complaint, Condition and Location via Tactical or Command Frequency. Priority 1/Red & 2/Yellow patients • <u>Triggers</u> Incident within Incident (IWI) <p>Division Supervisor/*POC contacts South Smith Communications:</p> <ul style="list-style-type: none"> • Division Supervisor or *POC will run "Medical-Emergency" on Command Frequency. • Division Supervisor or *POC to use "Medical Plan (ICS 206 WF)" worksheet in the IAP or IRPG. • Communications contacts Medical Unit Leader on the Command Frequency or cell phone. <p>*POC (Point of Contact)</p>	<p align="center">LINE "NON-EMERGENCY INCIDENT" PLAN:</p> <p>Crew Supervisor to contact Division Supervisor with:</p> <ul style="list-style-type: none"> • Patient Complaint, Condition and Location via Tactical or Command Frequency. Priority 3/Green Patients • <u>Does not</u> trigger Incident within Incident (IWI). Contact Communications via cell Phone (760) 220-2863 or Command if no cell service. <p>Division Supervisor/POC Contact Smith River Communications</p> <ul style="list-style-type: none"> • Division Supervisor or *POC will run "Non-Emergency Incident" via Cell phone or Command if no Cell service. • Division Supervisor or *POC to use "Medical Incident Report" worksheet on back of this page or in IRPG. • Communications contacts Medical Unit Leader on the Command Frequency or Cell Phone (805) 570-9061 <p>IN-CAMP – 24 HOUR MEDICAL</p> <p>Contact Smith River Communications with: Patient Complaint, Condition, and Location via phone (760) 220-2863, Command Frequency, or 911.</p>
---	---

ICS 206	7. PREPARED BY: (Medical Unit Leader-T)	8. REVIEWED BY: (Safety Officer)
	J. Emerson/M. Lencioni/M. Caffey(t) <i>Matthew Caffey</i>	Rick Bertram <i>Rick Bertram</i>

Medical Incident Report

FOR A **NON-EMERGENCY INCIDENT**: WORK THROUGH CHAIN OF COMMAND TO REPORT AND TRANSPORT INJURED PERSONNEL AS NECESSARY.

FOR A **MEDICAL EMERGENCY**: IDENTIFY ON SCENE INCIDENT COMMANDER BY NAME AND POSITION AND ANNOUNCE **"MEDICAL EMERGENCY"** TO INITIATE RESPONSE FROM COMMUNICATIONS

Use the following items to communicate situation to communications/dispatch.

1. CONTACT COMMUNICATIONS / DISPATCH (Verify correct frequency prior to starting report)

Ex: "Communications, Div. Alpha. Stand-by for Emergency Traffic."

2. INCIDENT STATUS: Provide incident summary (including number of patients) and command structure.

Ex: "Communications, I have a Red priority patient, unconscious, struck by a falling tree.

Requesting air ambulance to Forest Road 1 at (Lat./Long.)

This will be the Trout Meadow Medical Incident, IC is TFLD Jones. EMT Smith is providing medical care.

Severity of Emergency AND Transport Priority (priority 1, 2, 3)	<input type="checkbox"/> RED / PRIORITY 1 Life or limb threatening injury or illness. Evacuation need is IMMEDIATE <i>Ex: Unconscious, difficulty breathing, bleeding severely, 2° - 3° burns more than 4 palm sizes, heat stroke, disoriented.</i>	
	<input type="checkbox"/> YELLOW / PRIORITY 2 Serious Injury or illness. Evacuation may be DELAYED if necessary. <i>Ex: Significant trauma, unable to walk, 2° - 3° burns not more than 1-3 palm sizes.</i>	
	<input type="checkbox"/> GREEN / PRIORITY 3 Minor Injury or illness. Non-Emergency transport <i>Ex: Sprains, strains, minor heat-related illness.</i>	
Nature of Injury or Illness & Mechanism of Injury		Brief Summary of Injury or Illness (Ex: Unconscious, Struck by Falling Tree)
Transport Request		Air Ambulance / Short Haul/Hoist Ground Ambulance / Other
Patient Location		Descriptive Location & Lat. / Long. (WGS84)
Incident Name		Geographic Name + "Medical" (Ex: Trout Meadow Medical)
On-Scene Incident Commander		Name of on-scene IC of Incident within an Incident (Ex: TFLD Jones)
Crew Patient Care		Name of Care Provider (Ex: EMT Smith)

3. INITIAL PATIENT ASSESSMENT: Complete this section for each patient as applicable (start with the most severe patient)

Agency Affiliation: (NO PATIENT NAMES) Federal Contractor Local Government

Patient Assessment: Age: Weight: Chief Complaint:

(If pertinent to Injury) Skin Signs: (color/moisture/temp) Level of Consciousness: BP: HR: Respirations:

Treatment:

4. TRANSPORT PLAN:

Evacuation Location (drop point, intersection, helispot, Lat. / Long, hazards) Patient's ETA to Location:

5. ADDITIONAL RESOURCES / EQUIPMENT NEEDS:

Paramedic / EMT - Crews - Immobilization Devices - AED - Oxygen - Trauma Bag - IV/Fluid(s) - Splints - Rope rescue - Wheeled litter - HAZMAT - Extrication

6. COMMUNICATIONS: Identify State Air/Ground EMS Frequencies and Hospital Contacts as applicable

Function	Channel Name/Number	Receive (RX)	Tone/NAC *	Transmit (TX)	Tone/NAC *
COMMAND					
AIR-TO-GRND					

7. CONTINGENCY: Considerations: If primary options fail, what actions can be implemented in conjunction with primary evacuation method?
Be thinking ahead.

8. ADDITIONAL INFORMATION: Updates/Changes, etc.

REMEMBER: Confirm ETA's of resources ordered. Act according to your level of training. Be Alert - Keep Calm - Think Clearly - Act Decisively

*** Follow up with MEDL upon return to ICP ***