

# INCIDENT ACTION PLAN

## SMITH RIVER COMPLEX - SOUTH

CA-SRF-000968  
P5QJ6L



**BENJAMIN CHARLES SAPPER**  
**FIREFIGHTER**  
**ROGUE RIVER-SISKIYOU NF**  
August 4<sup>th</sup>, 2023



### OPERATIONAL PERIOD

8/27/2023      0700  
to  
8/28/2023      0700



# In Remembrance



On Wednesday we honored the life of first-year firefighter Benjamin Charles Sapper with a cordon of honor and flag ceremony in Gold Beach, Oregon. Benjamin was tragically killed in an on-duty vehicle accident that occurred near Powers, Oregon, on August 4th.

A memorial service is being planned for Benjamin on August 27th in his hometown of Boulder, Colorado, where we will continue to pay our respects and stand together with his family, friends, and co-workers in honor of his life and public service.

Benjamin was 21 years old. He joined the Forest Service because he had a desire to serve the community and be a part of a remarkable team. He had a passion for baseball, chess, skiing and engaging in deep discussions on topics ranging from philosophy to mathematics. Benjamin's zest for life was truly inspiring, and his crew said he left a lasting impact on everyone he encountered.

During this challenging time, let us come together to extend our support not only to Benjamin's grieving family but also to our fellow colleagues on the Gold Beach Ranger District and Rogue River-Siskiyou National Forest. Together, we can be a source of strength and solace for one another as we navigate this period of sorrow and loss.

Thank you for your unwavering support and for being part of a team that stands together in times of both triumph and tribulation. Let's remember Benjamin for the remarkable person he was and strive to make a positive difference in his honor.




Randy Moore  
Chief

Forest Service  
Washington Office



## ORGANIZATION ASSIGNMENT LIST (ICS 203)

<b>1. Incident Name:</b> SMITH RIVER COMPLEX - SOUTH		<b>2. Operational Period: Date From:</b> 8/27/2023 Time From: 0700		<b>Date To:</b> 8/28/2023 <b>Time To:</b> 0700	
<b>3. Incident Commander(s) and Command Staff:</b>			<b>7. Operation Section:</b>		
IC/UC's	Tom Clemo / Stephen Fillmore(t)		Day Operations	Scott Grasmick / Nick Cleary(t)	
Deputy	Jon Lucas		Strategic Operations	Travis Ederer	
Safety Officer	Rick Bertram, Ronald Plummer		Planning Operations	Tom Himmelrich / Trevor Johnson	
Information Officer	T. Stokesberry / T. Engberg / L. Walker		Night Operations	Joe Reyes	
Liaison Officer	R. Cablayan / J. Jones / B. Neumann / A. Widling / D. Gatewood		Branch	V	Shaun Craig / Erick D'Amico(t)
			Division/Group	A	Rick Dykhouse / Neal McCann(t)
<b>4. Agency/Organization Representatives:</b>			Division/Group	B	Jere Classay / Andy Beller(t)
Agency/Organization	Name		Division/Group	D	Patrick Bye / Scott Roeber(t)
SRF Forest Supervisor	Ted McArthur		Division/Group	GASQUET STR GRP	Brett Hildebrand/ Michael Shiffar(t)
Rogue/Siskiyou AREPs	D. Quinones / J. Winn / A. Watson		Division/Group	DIVIDE STR GRP	C. Todd / N. Gamboa / R. Roberts(t)
SRF Agency Admin	K. Allen / A. Skowlund		Branch	XX	Joe Tieso
CAL OES (ESC)	Robyn Cole		Division/Group	MM	Ron Oatman / Josh Fudge(t)
CAL OES FIRE	Ryan Wakefield		Division/Group	PP	Corey Stowe / Jason Falarski(t)
CAL Fire	Kurt McCray / Brandon Rodgers		Division/Group	SS	Brandon Paige / Richard Zinchuk(t)
CHP	Lt. Pete Roach		Division/Group	VV	Michael Willardson / Kevin Montoya(t)
Del Norte CO. OEM	Deborah Otenberg		Division/Group	YY	T. McNeal / K. McMillen(t)
Crescent City Manager	Eric Wier		Branch	CONTINGENCY	Jeff Shea
SRF Sheriff Office	Jennifer Wooley		Division/Group	CONTINGENCY	Nick Nava / Rich Durrell(t)
Del Norte Sheriff LELO	Jon Maxwell		Division/Group	CAL FIRE CONTINGENCY	Anthony Pescatore / Ryan Blume(t)
Crescent City Police Chief	Richard Griffin		Division/Group		
Crescent City Fire Chief	Kevin Carey		Division/Group		
NPS LEO	Daniel Owens		Branch		
Bureau of Indian Affairs	Nathan Gogna		Division/Group	NIGHT STR GRP	Ryan Edmondson / Jonathan Cripe(t)
Tolowa Tribe	Amanda O'Connell		Division/Group	NIGHT B/D	Josh Sunde / Brad Arganbright
Red Cross	Mary Dormind		Division/Group	NIGHT YY	James Robbins / Paul Coda(t)
Resource Advisor	AJ Donnell		Division/Group		
<b>5. Planning Section:</b>			Division/Group		
Chief	John Germanetti		Branch		
Deputy	Jonathan Roberts (t)		Division/Group		
Resource Unit	Hudley/Nahas(t)/Sketo(t)/Moreno(t)		Division/Group		
Situation Unit	M. Held / J. Hunter / Z. Jackson(t)		Division/Group		
Demobilization Unit	Mike Dunkel		Division/Group		
GISS	E.Dolhanski / D. Beasley / E.Opliger		Division/Group		
FBAN	Nic Elmquist		<b>Air Operations Branch</b>		<b>Director:</b> John Crotty
IMET	James White		Air Support Group Supervisor		Curt Warner
Training Specialist	John Leblanc		Air Tactical Group Supervisor		
Check-In Recorder	David Charron(t)/Margot Leech(t)		Helibase Manager		
<b>6. Logistics Section</b>					
Chief	Bob Feldtz / Mike Farmer(t)		<b>8. Finance/Administration Section</b>		
Facilities Unit	Cassie Buckley(t)		Chief	Lisa Dow	
Ground Support Unit	Kevin Palm		Time Unit	Amanda Folendorf / Tiffanie Sachse-Santi	
Communications Unit	Glendon Chan / Chris Oliver(t)		Personnel Time	Ryan Bridgen / Terese Toomey(t)	
Medical Unit	J. Emerson/M. Lencioni/M. Caffey(t)		Comp/Claims Unit	Tina Weaver	
ITSS	Marty Cohn / Justin Martin(t)		Cost Unit	Sandra Tarvin	
<b>Prepared By: Name:</b>	John Germanetti	<b>Position/Title:</b>	PSC	<b>Signature:</b> 	
<b>ICS 203</b>		<b>Date/Time:</b>	8/26/2023 2300 hours		



# Fire Weather Forecast



**FORECAST NO: 10**  
**PREDICTION FOR: Sunday-Monday**  
**DATE: August 27<sup>th</sup>, 2023**  
**FORECAST ISSUED: 1800 August 26<sup>th</sup>, 2023**

**FIRE: Smith River Complex South**  
**UNIT: CA-SRF-968**  
**IMET: James White (240-778-5316)**  
**SIGNED: *James White***

**WEATHER DISCUSSION:** \* Valley elevations = 400ft (Gasquet), Ridgetop elevations = 3500 ft (Camp Six) \*  
 A largely steady and quiet weather pattern will continue today. Very slight cooling is expected under heavy smoke. Weak onshore winds combined with a strong, shallow inversion will allow for significant smoke accumulation in valleys. With the marine inversion intersecting the terrain even during the day. RH will continue to be highly variable with elevation. Large RH swings can be expected on ridgetops where the marine layer pops in and out. Monday will be similar albeit slightly stronger smoke transport should allow for very slight warming.

**TODAY:**

**WEATHER:** Clear. Heavy smoke in valleys near the fire.  
**MAX TEMP:** Valleys: 70-75°F (2-4°F ↓)      **MIN RH:** Valleys: 50-60% (Little Change)  
                   Ridgetops: 68-73°F (2-4°F ↓)      **Ridgetops:** 55-65% (Little Change)  
**CHC WTG RAIN:** 0%                                      **LAL:** 1                                      **SFC VIS:** 0.5-1 mile, better afternoon.  
**WINDS:** Valleys: Morning downslope 2-4 mph afternoon upslope 3-6 mph.  
**(20 feet)**      **Ridgetops:** Morning northeast 2-4 mph, southwest 4-8 mph gusts to 14 mph.  
**MIXING HEIGHT:** Rising to 4,000 ft by 1400.                                      **TRANSPORT WIND:** West 6-10 mph.

**TONIGHT:**

**WEATHER:** Mostly clear. Weak thermal belt 1500 to 4000 ft.  
**MIN TEMP:** Valleys: 52-57° (Little Change)      **MAX RH:** Valleys: 90-95% (Little Change)  
                   Ridgetops: 58-66° (Little Change)      **Ridgetops:** 50-60% (3-6% ↑)  
**CHC WTG RAIN:** 0%                                      **LAL:** 1                                      **SFC VIS:** 0.5 mile.  
**WINDS:** Valleys: Downslope 2-4 mph.  
**(20 FEET)**      **Ridgetops:** Northeast 4-8 mph infrequent gusts to 12 mph.  
**MIXING HEIGHT:** Dropping to 1,500 ft by 100.                                      **TRANSPORT WIND:** Northeast 3-6 mph.

**MONDAY:**

**WEATHER:** Clear. Heavy smoke in valleys near the fire.  
**MAX TEMP:** Valleys: 72-77°F (1-3°F ↑)      **MIN RH:** Valleys: 50-60% (Little Change)  
                   Ridgetops: 70-75°F (1-3°F ↑)      **Ridgetops:** 55-65% (Little Change)  
**CHC WTG RAIN:** 0%                                      **LAL:** 1                                      **SFC VIS:** 1-2 miles, better west in the afternoon  
**WINDS:** Valleys: Morning downslope 2-4 mph afternoon upslope 3-6 mph.  
**(20 feet)**      **Ridgetops:** Morning northeast 2-4 mph, west 5-10 mph gusts to 18 mph.  
**MIXING HEIGHT:** Rising to 4,000 ft by 1400.                                      **TRANSPORT WIND:** West 8-12 mph.

**EXTENDED OUTLOOK:** A similar, generally favorable pattern will continue into early next week. The main changing variable will be the depth and strength of the marine layer on any given day which will slightly modify overall conditions. Weather models show with high consistency a moderate but prolonged east wind event around next Wednesday through Thursday. Current model estimates show the highest wind gusts at night around 40 mph on ridgetops.


—————→  
 Nearby Weather Observations



<b>FIRE BEHAVIOR FORECAST</b>	
<b>Incident Name:</b> <b>SMITH RIVER COMPLEX - SOUTH</b>	<b>Operational Period:</b> Date From: 8/27/23 Date To: 8/28/23 Time From: 0700 Time To: 0700
<b>Forecast Number:</b> 09	<b>Type of Fire:</b> Wildfire
<b>Unit:</b> Six Rivers National Forest - Gasquet District	
<b>INPUTS</b>	
<b>WEATHER SUMMARY:</b>  <b>***See Fire Weather Forecast***</b>	
<b>FUELS SUMMARY:</b> Due to the below normal amount of precipitation, live fuel moisture levels did not recover this spring, making the shrubs readily available for consumption. There are snag patches within the fire scars with scabbier fuels; Biscuit (2002), Coon (2015), Eclipse Complex (2017) and Slater (2020). The fuel moistures of the manzanita are around 110% and the 1000-hour fuels 9%, below critical levels. The fire scars, including the 2002 Biscuit fire, has hampered growth of the Corral, Diamond, and western portion of the Kelly fire.	
<b>OUTPUTS</b>	
<b>FIRE BEHAVIOR</b>	
<b>GENERAL:</b> We are currently on the tail end of what is peak of fire season for this area of the state. Under smoky conditions, the fire will consume the heavy dead surface fuels and have isolated tree torching where there is a higher fuel load under the timber canopy. Roll-out will continue to be a driver of growth in these areas. When the fire is exposed to a stronger wind or gets established on a steep slope with aligned fuels and topography, expect rapid rates of spread with sustained crown runs and moderate range spotting. Take advantage of a few more days of favorable conditions to secure as much of the fires edge as possible before a more adverse weather pattern brings drier conditions and easterly flow over  <b>Fire Danger Indices – 2022 IRPG Page 39</b> Energy Release Component (ERC): 85th August Average ERC Percentile: 85th 2020 Slater Fire Large growth days (September 10th) - ERC Percentile: 99th <b>Peak Burn Period (1400 – 2000) - Probability of Ignition (PIG): 40% (shaded), 40% (unshaded)</b>	
<b>SPECIFIC:</b> <b>Branch V:</b> A similar day weather wise is expected over the fire area. Anticipate the burn window to finish tying in the firing operation up the North Fork Smith River to the Biscuit to open around noon. This should be around the same time the westerly flow will kick in, so all signs point to good burning conditions. Aggressively mop-up and secure as much of the control lines north of Gasquet.  <b>Branch XX:</b> Strong work tying in a tough piece of line and locking off the north slope of the French Hill Road down to Hwy 199. The afternoon westerly flow should keep the westerly progression of the main fire on both side of Craig's Creek from making any strong runs to the dozer line along the 17N40 Road in Div. YY. As always, post lookouts that can see the main fire and notify resources of changing conditions. This piece of the complex is going to likely have the biggest potential when the east winds arrive next week.  <b>**Night shift**:</b> An inversion should settle in over the fire area around 2200. Most of the fire intensity during the day will	
<b>AIR OPERATIONS:</b> Sunrise 0608, Last Light 2027 (Daylength: losing 2 min, 35 sec each day) Smoke and marine layer influence will keep air support limited early in the shift, but afternoon westerly flow should allow for partial clearing along the westside of the complex.	
<b>SAFETY:</b> Heavy smoke mixed with the marine layer is producing dense fog on many of the access roads. Drive defensively and use your lights to ensure people can see you.	
<b>Prepared by Fire Behavior Analyst:</b> Nic Elmquist	<b>Signature:</b> <i>Nic Elmquist</i>
<b>Date/Time:</b> 8/26/23 at 1800	


## ASSIGNMENT LIST (ICS 204 WF)

CONTROLLED UNCLASSIFIED INFORMATION//BASIC

<b>1. Incident Name:</b>		<b>2. Operational Period:</b>				<b>3. Branch</b>		<b>Division</b>	
<b>SMITH RIVER COMPLEX - SOUTH</b>		Date From: 08/27/23	Date To: 08/28/23			<b>V</b>		<b>A</b>	
		Time From: 0700	Time To: 0700			Page 1 of 1		Alpha	
<b>4. Operations Personnel:</b>									
Operations Section Chief: <b>Scott Grasmick / Nick Cleary(t)</b>					Planning Ops: <b>Tom Himmelrich / Trevor Johnson</b>				
Branch Director: <b>Shaun Craig / Erick D'Amico(t)</b>					Night Ops: <b>Joe Reyes</b>				
Division/Group Supervisor: <b>Rick Dykhouse / Neal McCann(t)</b>					Air Attack:				
<b>5. Resources Assigned:</b>									
<b>**Shaded resources below are 24 hour**</b>									
Resource Identifier	ALS	LWD	Leader	Personnel	Request #	Hours	Reporting Location		
HC1 VENTANA IHC		9/4	HAROLD COOK	22	C-32	0700-1900	WARD FIELD CAMP		
HC2IA BLM FOLSOM VETS		8/29	ROGER HOOPER	17	C-6	0700-1900	WARD FIELD CAMP		
TF SNF 2023		8/30	RON SANDLING	18	E-312	0700-1900	WARD FIELD CAMP		
EST6 XSB 1520F		9/6	SCOTT NUNEZ	14	E-314	0700-1900	WARD FIELD CAMP		
ENG3 PVT NATIONAL WILDLAND 142		9/3	JASON DAVIS	3	E-142	0700-1900	WARD FIELD CAMP		
ENG3 PVT SCHOLLS 148		9/3	BRIAN RINGEN	3	E-148	0700-1900	WARD FIELD CAMP		
ENG4 PVT FIRECO 136		9/2	TYLER NAIL	2	E-136	0700-1900	WARD FIELD CAMP		
ENG4 PVT PIERSOL 267		9/6	BRIDGER LARSEN	3	E-267	0700-1900	WARD FIELD CAMP		
ENG6 PVT VALKYRIE 138		9/2	CHARLES REESE	3	E-138	0700-1900	WARD FIELD CAMP		
ENG6 PVT HB FORESTRY 211		9/2	AARON GONZALEZ	3	E-211	0700-1900	WARD FIELD CAMP		
DOZ2 PNF D22		9/6	TOM SANCHEZ	2	E-328	0700-1900	WARD FIELD CAMP		
WTT2 PVT NATIONAL 165		9/2	AARON PHILLIPS	2	E-165	0700-1900	WARD FIELD CAMP		
FMOD PAC RIDGELINE 156		9/3	ERNIE ADAMS	2	O-156	0700-1900	WARD FIELD CAMP		
EMPF MORGAN	X	9/6	ROBERT MORGAN	1	O-376	0700-1900	WARD FIELD CAMP		
EMTF(T) AMBRIZ		9/6	MANUEL AMBRIZ	1	O-299	0700-1900	WARD FIELD CAMP		
<b>6. Work Assignments:</b>									
Keep the fire north of Highway 199 and east of County Road 305 in order to protect the natural, cultural, and infrastructure values utilizing dozer and handline, firing where appropriate, and providing holding forces during operations.									
<b>7. Special Instructions:</b>									
-Be aware of retardant avoidance areas, mine shafts and naturally occurring asbestos.									
-Maintain awareness of fire conditions affecting road systems in your area that might be a primary escape route and establish secondary egress to safe area. Ensure trigger points are established and re-evaluated throughout the shift.									
Safety Officers assigned to Division A/Divide & Gasquet Structure Protection: Guadalupe Fernandez									
REMS 1 & 4 assigned to Branch V									
REAFs: Berg, Gray, Clark									
<b>8. Communications</b>									
Name	Ch	Function	Rx Freq	Rx Tone	Tx Freq	Tx Tone	Mode	Notes	
NIFC C3	1	COMMAND	170.4250	(T3) 131.8	168.0750	(T3) 131.8	A	CAMP 6	
NIFC T3	7	TACTICAL	168.6000	(T3) 131.8	168.6000	(T3) 131.8	A		
CALCORD	15	TACTICAL	156.0750	(T6) 156.7	156.0750	(T6) 156.7	A	EMS AIR COORDINATION	
A/G TAC	14	A/G TAC	169.4875	0.0	169.4875	0.0	A		
AIRGUARD	16	AIRGUARD	168.6250	0.0	168.6250	(T1) 110.9	A		
<b>9. Prepared by: Name:</b>									
Hudley/Nahas(t)/Sketo(t)/Moreno(t)					RESL				
					Signature: 				
<b>ICS 204</b>		Date/Time: 8/26/2023			2200		Personnel Count: 96		

# ASSIGNMENT LIST (ICS 204 WF)

CONTROLLED UNCLASSIFIED INFORMATION//BASIC

<b>1. Incident Name:</b>		<b>2. Operational Period:</b>				<b>3. Branch</b>		<b>Division</b>	
<b>SMITH RIVER COMPLEX - SOUTH</b>		Date From: 08/27/23	Date To: 08/28/23	Time From: 0700	Time To: 0700	<b>V</b>		<b>B</b>	
<b>4. Operations Personnel:</b>						Page 1 of 2		Bravo	
Operations Section Chief: <b>Scott Grasmick / Nick Cleary(t)</b>				Planning Ops: <b>Tom Himmelrich / Trevor Johnson</b>					
Branch Director: <b>Shaun Craig / Erick D'Amico(t)</b>				Night Ops: <b>Joe Reyes</b>					
Division/Group Supervisor: <b>Jere Classay / Andy Beller(t)</b>				Air Attack:					
<b>5. Resources Assigned:</b>		<b>**Shaded resources below are 24 hour**</b>							
Resource Identifier	ALS	LWD	Leader	Personnel	Request #	Hours	Reporting Location		
HC1 SMITH RIVER IHC		9/7	DOUG DENLING	21	C-63	0700-1900	WARD FIELD CAMP		
HC2I NLTX SLIDE MOUNTAIN 7		8/30	JOSH HIGGINS	19	C-7	0700-1900	WARD FIELD CAMP		
HC2I BIA FORT APACHE		9/3	BRIAN QUINTERO	22	C-25	0700-1900	WARD FIELD CAMP		
HC2 PVT PACIFIC OASIS 24		9/2	CASEY DOWNS	20	C-24	0700-1900	WARD FIELD CAMP		
HC2 PVT GFP ENT 56		9/7	MITCHELL ELSTAD	20	C-56	0700-1900	WARD FIELD CAMP		
HC2 PVT 3B'S FORESTRY		9/6	MICHEAL MARLOW	20	C-60	0700-1900	WARD FIELD CAMP		
WFM2 EAGLE LAKE WFM		9/6	DANE NESBITT	9	O-383	0700-1900	WARD FIELD CAMP		
ENG3 PVT NESBITTS 135		9/2	VAS NAIKER	3	E-135	0700-1900	WARD FIELD CAMP		
ENG4 PVT CONTRACT WATER 113		9/3	MIKE MUSIA	3	E-113	0700-1900	WARD FIELD CAMP		
ENG4 PVT ARCHER 123		9/2	JAMES HARTER	3	E-123	0700-1900	WARD FIELD CAMP		
ENG4 PVT FLASHBACK 149		9/3	TREVOR MCWATERS	3	E-149	0700-1900	WARD FIELD CAMP		
ENG4 PVT J3 205		9/2	CHRIS DESROSIER	3	E-205	0700-1900	WARD FIELD CAMP		
ENG6 BIA AZFTA E5263		9/8	PETER PAXSON	1	E-395	0700-1900	WARD FIELD CAMP		
DO22 PVT EVANS BROTHERS 169		9/2	TOM EVANS	1	E-169	0700-1900	WARD FIELD CAMP		
DO22 PVT LONESTAR 170		9/2	ROBERT ASCHERIN	2	E-170	0700-1900	WARD FIELD CAMP		
DO22 PVT GARMAN CONT 172		9/2	DOUG GRIDER	2	E-172	0700-1900	WARD FIELD CAMP		
WTT2 PVT 310 DUST CONTROL 348		9/7	CAMERON MULLINS	2	E-348	0700-1900	WARD FIELD CAMP		
TFLD POWERS		9/7	BRIAN POWERS	1	O-288	0700-1900	WARD FIELD CAMP		
TFLD(T) WRENN		9/5	WILLIAM WRENN	1	O-231	0700-1900	WARD FIELD CAMP		
TFLD(T) ASHER		9/7	MICHEAL ASHER	1	O-289	0700-1900	WARD FIELD CAMP		
<b>6. Work Assignments:</b>									
Keep the fire north of Highway 199 and east of County Road 305 in order to protect the natural, cultural, and infrastructure values utilizing dozer and handline, firing where appropriate, and providing holding forces during operations.									
<b>7. Special Instructions:</b>									
-Be aware of retardant avoidance areas, mine shafts and naturally occurring asbestos.									
-Maintain awareness of fire conditions affecting road systems in your area that might be a primary escape route and establish secondary egress to safe area. Ensure trigger points are established and re-evaluated throughout the shift.									
Safety Officers assigned to Division B/D: Ray Franco and Shaun Davis(t)									
REMS 1 & 4 assigned to Branch V									
REAFs: Clark, Stubbs, Siedel, Loose									
<b>8. Communications</b>									
Name	Ch	Function	Rx Freq	Rx Tone	Tx Freq	Tx Tone	Mode	Notes	
NIFC C3	1	COMMAND	170.4250	(T3) 131.8	168.0750	(T3) 131.8	A	CAMP 6	
NIFC T5	9	TACTICAL	166.7750	(T3) 131.8	166.7750	(T3) 131.8	A		
CALCORD	15	TACTICAL	156.0750	(T6) 156.7	156.0750	(T6) 156.7	A	EMS AIR COORDINATION	
A/G TAC	14	A/G TAC	169.4875	0.0	169.4875	0.0	A		
AIRGUARD	16	AIRGUARD	168.6250	0.0	168.6250	(T1) 110.9	A		
<b>9. Prepared by: Name:</b>		Hudley/Nahas(t)/Sketo(t)/Moreno(t)				RESL			
ICS 204		Date/Time: 8/26/2023 2200				Signature: 		Personnel Count: 157	


CONTROLLED UNCLASSIFIED INFORMATION//BASIC





## ASSIGNMENT LIST (ICS 204 WF)

CONTROLLED UNCLASSIFIED INFORMATION//BASIC

<b>1. Incident Name:</b> <b>SMITH RIVER COMPLEX - SOUTH</b>		<b>2. Operational Period:</b> Date From: 08/27/23    Date To: 08/28/23 Time From: 0700    Time To: 0700				<b>3. Branch</b> <b>V</b>		<b>Division</b> <b>D</b>	
<b>4. Operations Personnel:</b>						Page 1 of 1		Delta	
Operations Section Chief: <b>Scott Grasmick / Nick Cleary(t)</b>				Planning Ops: <b>Tom Himmelrich / Trevor Johnson</b>					
Branch Director: <b>Shaun Craig / Erick D'Amico(t)</b>				Night Ops: <b>Joe Reyes</b>					
Division/Group Supervisor: <b>Patrick Byde / Scott Roeber(t)</b>				Air Attack:					
<b>5. Resources Assigned:</b>		<b>**Shaded resources below are 24 hour**</b>							
Resource Identifier	ALS	LWD	Leader	Personnel	Request #	Hours	Reporting Location		
HC1 LAC ST1170G		9/7	ROB MORALES	25	C-40	0700-1900	WARD FIELD CAMP		
HC2 PVT NORTH PACIFIC FORESTRY 96		8/29	JEFF ANDERSON	20	C-50020	0700-1900	WARD FIELD CAMP		
HC2 PVT JC OROZCO 1		9/2	JAMAL KWIATKOWSKI	20	C-1	0700-1900	WARD FIELD CAMP		
ENG3 LPF 316		8/29	KYLE ARMSTRONG	5	E-282	0700-1900	WARD FIELD CAMP		
ENG3 STF 314		8/27	ANDREW KAHANA	5	E-357	0700-1900	WARD FIELD CAMP		
ENG3 PVT TORRES E3		9/2	ADOLFO ESPINO	3	E-218	0700-1900	WARD FIELD CAMP		
ENG3 PVT J3 258		9/6	WES WALLACE	3	E-258	0700-1900	WARD FIELD CAMP		
ENG4 PVT DRAGON FIGHTERS 141		9/3	MIKE SPECHT	3	E-141	0700-1900	WARD FIELD CAMP		
ENG5 PVT GLOBAL WILDFIRE 143		9/3	TJ BURKEY	3	E-143	0700-1900	WARD FIELD CAMP		
ENG5 PVT MONTROSE 144		9/3	DIEGO ALVAREZ	3	E-144	0700-1900	WARD FIELD CAMP		
ENG6 PVT SWFS 112		9/3	ROBERT STIGEN	3	E-112	0700-1900	WARD FIELD CAMP		
ENG6 PVT ADAMS 116		9/2	MILAN TORRES	3	E-116	0700-1900	WARD FIELD CAMP		
ENG6 PVT FENIX 117		9/2	SUZANNE FLYNN	3	E-117	0700-1900	WARD FIELD CAMP		
ENG6 PVT J3 CONTRACTING 259		9/6	BEN MYERS	3	E-259	0700-1900	WARD FIELD CAMP		
WTS1 PVT BERRY 342		9/6	STEVEN BERRY	1	E-342	0700-1900	WARD FIELD CAMP		
WTT2 PVT SACRAMENTO MTN 163		9/6	RICHARD DAVIS	2	E-163	0700-1900	WARD FIELD CAMP		
WTT2 PVT DYNAMITE 168		9/3	MICHAEL RUDOLPH	2	E-168	0700-1900	WARD FIELD CAMP		
GRD1 PVT ANDERSON ROCK 289		9/7	NICK ANDERSON	2	E-289	0700-1900	WARD FIELD CAMP		
TFLD ELLSBERRY		9/6	RICHARD ELLSBERRY	1	O-293	0700-1900	WARD FIELD CAMP		
STEN MADDEN		9/6	CLINT MADDEN	1	O-258	0700-1900	WARD FIELD CAMP		
EMPF MUNDS	X	9/1	NOAH MUNDS	1	O-91	0700-1900	WARD FIELD CAMP		
EMTF HAPKE		9/1	MIKE HAPKE	1	O-105	0700-1900	WARD FIELD CAMP		
<b>6. Work Assignments:</b> Keep the fire north of Highway 199 and east of County Road 305 in order to protect the natural, cultural, and infrastructure values utilizing dozer and handline, firing where appropriate, and providing holding forces during operations. Continue to look for opportunity to construct direct fireline on the Corral and Diamond fires.									
<b>7. Special Instructions:</b> -Be aware of retardant avoidance areas, mine shafts and naturally occurring asbestos. -Maintain awareness of fire conditions affecting road systems in your area that might be a primary escape route and establish secondary egress to safe area. Ensure trigger points are established and re-evaluated throughout the shift. <b>Safety Officers assigned to Division B/D:</b> Ray Franco and Shaun Davis(t) REMS 1 & 4 assigned to Branch V REAFs: Stubbs, Siedel, Loose									
<b>8. Communications</b>									
Name	Ch	Function	Rx Freq	Rx Tone	Tx Freq	Tx Tone	Mode	Notes	
NIFC C3	1	COMMAND	170.4250	(T3) 131.8	168.0750	(T3) 131.8	A	CAMP 6	
NIFC T1	6	TACTICAL	168.0500	(T3) 131.8	168.0500	(T3) 131.8	A		
CALCORD	15	TACTICAL	156.0750	(T6) 156.7	156.0750	(T6) 156.7	A	EMS AIR COORDINATION	
A/G TAC	14	A/G TAC	169.4875	0.0	169.4875	0.0	A		
AIRGUARD	16	AIRGUARD	168.6250	0.0	168.6250	(T1) 110.9	A		
<b>9. Prepared by: Name:</b>		Hudley/Nahas(t)/Sketo(t)/Moreno(t)				RESL			
ICS 204		Date/Time: 8/26/2023 2200				Signature: 		Personnel Count: 113	

# ASSIGNMENT LIST (ICS 204 WF)

CONTROLLED UNCLASSIFIED INFORMATION//BASIC

<b>1. Incident Name:</b> <b>SMITH RIVER COMPLEX - SOUTH</b>		<b>2. Operational Period:</b> Date From: 08/27/23    Date To: 08/28/23 Time From: 0700    Time To: 0700				<b>3. Branch</b> <b>Division</b> <b>V</b> <b>GASQUET STR GRP</b>		
						Page 1 of 2		
<b>4. Operations Personnel:</b>								
Operations Section Chief: <b>Scott Grasmick / Nick Cleary(t)</b>					Planning Ops: <b>Tom Himmelrich / Trevor Johnson</b>			
Branch Director: <b>Shaun Craig / Erick D'Amico(t)</b>					Night Ops: <b>Joe Reyes</b>			
Division/Group Supervisor: <b>Brett Hildebrand/ Michael Shiffar(t)</b>					Air Attack:			
<b>5. Resources Assigned:</b>		<b>**Shaded resources below are 24 hour**</b>						
Resource Identifier	ALS	LWD	Leader	Personnel	Request #	Hours	Reporting Location	
HC2 PVT LAVA RIVER C-11		9/1	BERTHA CHAVEZ	20	C-23	0700-1900	WARD FIELD CAMP	
HC2 PVT NORTH PACIFIC FORESTRY C-2		8/30	ANDREW KENT	20	C-2	0700-1900	WARD FIELD CAMP	
EST1 OES 2801A **24hrs**		9/3	TY BECERRA	22	E-240	0700-0700	WARD FIELD CAMP	
EST3 OES 0803C **24hrs**		9/1	PETE GONZALEZ	18	E-87	0700-0700	WARD FIELD CAMP	
EST3 XNA 2201C **24hrs**	X	9/1	ERIK MORTIMORE	22	E-88	0700-0700	WARD FIELD CAMP	
EST1 OES 2802A		9/3	JOSE CASTREJON	21	E-241	0700-1900	WARD FIELD CAMP	
EST1 OES 2803A		9/3	JOEL ABELSON	21	E-242	0700-1900	WARD FIELD CAMP	
EST1 OES 5805A		9/4	RAYMOND RUSSELL	21	E-244	0700-1900	WARD FIELD CAMP	
EST6 OES 2861F		8/28	BRIAN METCHO	19	E-270	0700-1900	WARD FIELD CAMP	
ENG1 CRT E-5112		9/3	BEAU SMITH	4		0700-1900	WARD FIELD CAMP	
ENG4 PVT INBOUND 119		9/2	EVAN RUSSELL	3	E-119	0700-1900	WARD FIELD CAMP	
ENG4 PVT J3 208		9/2	JOSE ARIZMENDI	3	E-208	0700-1900	WARD FIELD CAMP	
ENG4 PVT J3 210		9/2	ANDRE KELLEY	3	E-210	0700-1900	WARD FIELD CAMP	
ENG4 PVT WILDFIRE 219		9/2	MIKE FOSTER	3	E-219	0700-1900	WARD FIELD CAMP	
ENG5 PVT FORREST 248		9/3	AARON VELA	3	E-248	0700-1900	WARD FIELD CAMP	
ENG4 PVT TORRES CONT 403		9/8	JAMES VALDEZ	1	E-403	0700-1900	WARD FIELD CAMP	
ENG5 PVT FORREST 248		9/3	AARON VELA	3	E-248	0700-1900	WARD FIELD CAMP	
ENG6 PVT Y2 124		9/3	STANLEY VINCENT	3	E-124	0700-1900	WARD FIELD CAMP	
ENG6 PVT TIMBERLINE 140		9/3	JEROME ANTONIO	3	E-140	0700-1900	WARD FIELD CAMP	
<b>6. Work Assignments:</b>								
Keep the fire north of Highway 199 and east of County Road 305 in order to protect the natural, cultural, and infrastructure values utilizing dozer and handline, firing where appropriate, and providing holding forces during operations. Prepare and defend structures in Highway 199 corridor and adjacent communities. Conduct damage assessment in areas that the fire has impacted.								
<b>7. Special Instructions:</b>								
-Be aware of retardant avoidance areas, mine shafts and naturally occurring asbestos.								
-Maintain awareness of fire conditions affecting road systems in your area that might be a primary escape route and establish secondary egress to safe area. Ensure trigger points are established and re-evaluated throughout the shift.								
Safety Officer(s) assigned to Division A/Divide & Gasquet Structure Protection: Guadalupe Fernandez								
REMS 1 & 4 assigned to Branch V								
<b>8. Communications</b>								
Name	Ch	Function	Rx Freq	Rx Tone	Tx Freq	Tx Tone	Mode	Notes
NIFC C3	1	COMMAND	170.4250	(T3) 131.8	168.0750	(T3) 131.8	A	CAMP 6
VFIRE 24	12	TACTICAL	154.2725	(T6) 156.7	154.2725	(T6) 156.7	A	GASQUET STR GROUP/NIG
CALCORD	15	TACTICAL	156.0750	(T6) 156.7	156.0750	(T6) 156.7	A	EMS AIR COORDINATION
A/G TAC	14	A/G TAC	169.4875	0.0	169.4875	0.0	A	
AIRGUARD	16	AIRGUARD	168.6250	0.0	168.6250	(T1) 110.9	A	
<b>9. Prepared by: Name:</b> Hudley/Nahas(t)/Sketo(t)/Moreno(t)    RESL								
						Signature:		
ICS 204		Date/Time: 8/26/2023    2200				Personnel Count: 213		





## ASSIGNMENT LIST (ICS 204 WF)

CONTROLLED UNCLASSIFIED INFORMATION//BASIC

<b>1. Incident Name:</b>	<b>2. Operational Period:</b>	<b>3. Branch</b>	<b>Division</b>
<b>SMITH RIVER COMPLEX - SOUTH</b>	Date From: 08/27/23    Date To: 08/28/23 Time From: 0700    Time To: 0700	<b>XX</b>	<b>MM</b>

<b>4. Operations Personnel:</b>		Page 1 of 2	Mike-Mike
Operations Section Chief: <b>Scott Grasmick / Nick Cleary(t)</b>	Planning Ops: <b>Tom Himmelrich / Trevor Johnson</b>		
Branch Director: <b>Joe Tieso</b>	Night Ops: <b>Joe Reyes</b>		
Division/Group Supervisor: <b>Ron Oatman / Josh Fudge(t)</b>	Air Attack:		


<b>5. Resources Assigned:</b>		**Shaded resources below are 24 hour**					
Resource Identifier	ALS	LWD	Leader	Personnel	Request #	Hours	Reporting Location
HC2 PVT NORTH PACIFIC FORESTRY C1		9/8	ALEX GALICIA	20	C-57	0700-1900	WARD FIELD CAMP
HC2 PVT LAVA RIVER 58		9/7	WILL CONTREAS	20	C-58	0700-1900	WARD FIELD CAMP
HC2 PVT BIG BARK 59		9/7	CHESTER FULBRIG	20	C-59	0700-1900	WARD FIELD CAMP
HC2 PVT ALTA PACIFIC C-7		9/7		20	C-61	0700-1900	WARD FIELD CAMP
ENG3 SQF 31		8/30	JOSE RIVIERA	5	E-281	0700-1900	WARD FIELD CAMP
ENG3 GENESEE FIRE 932		8/30	JOSH BOYLES	5	E-1	0700-1900	WARD FIELD CAMP
ENG3 PVT OUTBACK 249		8/30	JARED ANDRA	3	E-249	0700-1900	WARD FIELD CAMP
ENG4 PVT IDAHO TRAILBLAZERS 159		9/1	OSVALDO ARENAS	3	E-159	0700-1900	WARD FIELD CAMP
ENG4 PVT TETON 221		9/3	CASSY JOHNSON	4	E-221	0700-1900	WARD FIELD CAMP
ENG6 WHISPERING PINES E66		8/30	GABE DONNEY	3	E-280	0700-1900	WARD FIELD CAMP
ENG6 PVT FIRST STRIKE 118		9/2	JEFF PURITT	3	E-118	0700-1900	WARD FIELD CAMP
ENG6 PVT IDAHO TRAILBLAZERS 160		9/2	EDDY GARCIA	3	E-160	0700-1900	WARD FIELD CAMP
ENG6 PVT IMPERIA FORESTRY 203		9/2	LUCIANO GONZALEZ	3	E-203	0700-1900	WARD FIELD CAMP
ENG6 PVT BLACKSTONE 354		9/6	JORDAN JESSEE	3	E-354	0700-1900	WARD FIELD CAMP
DOZZ STF 52		9/3	MIKE KNOTT	2	E-223	0700-1900	WARD FIELD CAMP
DOZZ PVT SMOKEY MTN 173		9/2	IKE TOMLINSON	2	E-173	0700-1900	WARD FIELD CAMP
WTT2 AZ FIRE MEDICAL AUTH 106		8/26	JUSTIN MITTON	2	E-6	0700-1900	WARD FIELD CAMP
WTT2 PVT 5J WATER 161		9/2	KEELY JACKSON	2	E-161	0700-1900	WARD FIELD CAMP
WTT2 PVT LOOMIS 344		9/8	JEAN LOOMIS	2	E-344	0700-1900	WARD FIELD CAMP
GRD1 PVT LET-ER-BUCK 288		9/5	STEVE LASSEN	2	E-288	0700-1900	WARD FIELD CAMP

**6. Work Assignments:**  
 Keep the fire South of Highway 199 in order to protect the natural, cultural, and infrastructure values utilizing dozer and handline, firing where appropriate, and providing holding forces during operations. Conduct damage assessment in areas that the fire has impacted. Continue to coordinate operations with PNW Branch XIII Div K.

**7. Special Instructions:**  
 -Be aware of retardant avoidance areas, mine shafts and naturally occurring asbestos.  
 -Maintain awareness of fire conditions affecting road systems in your area that might be a primary escape route and establish secondary egress to safe area. Ensure trigger points are established and re-evaluated throughout the shift.  
**Safety Officers assigned to Division MM:** Bryon Shropshire  
**REMS 2, 3, & 5** are assigned to Branch XX

**8. Communications**

Name	Ch	Function	Rx Freq	Rx Tone	Tx Freq	Tx Tone	Mode	Notes
NIFC C3	1	COMMAND	170.4250	(T3) 131.8	168.0750	(T3) 131.8	A	CAMP 6
NIFC T4	8	TACTICAL	166.7250	(T3) 131.8	166.7250	(T3) 131.8	A	
CALCORD	15	TACTICAL	156.0750	(T6) 156.7	156.0750	(T6) 156.7	A	EMS AIR COORDINATION
A/G TAC	14	A/G TAC	169.4875	0.0	169.4875	0.0	A	
AIRGUARD	16	AIRGUARD	168.6250	0.0	168.6250	(T1) 110.9	A	

**9. Prepared by: Name:** Hudley/Nahas(t)/Sketo(t)/Moreno(t)    RESL  
 Signature:   
**ICS 204**    Date/Time: 8/26/2023 2200    Personnel Count: 127









## ASSIGNMENT LIST (ICS 204 WF)

CONTROLLED UNCLASSIFIED INFORMATION//BASIC

<b>1. Incident Name:</b> <b>SMITH RIVER COMPLEX - SOUTH</b>	<b>2. Operational Period:</b> Date From: 08/27/23    Date To: 08/28/23 Time From: 0700    Time To: 0700	<b>3. Branch</b> <b>Division</b>  <b>XX</b> <b>VV</b>  Page 1 of 2    Victor-Victor
--	---	---

<b>4. Operations Personnel:</b> Operations Section Chief: <b>Scott Grasmick / Nick Cleary(t)</b> Branch Director: <b>Joe Tieso</b> Division/Group Supervisor: <b>Michael Willardson / Kevin Montoya(t)</b>	Planning Ops: <b>Tom Himmelrich / Trevor Johnson</b> Night Ops: <b>Joe Reyes</b> Air Attack:
---	--

5. Resources Assigned:		**Shaded resources below are 24 hour**					
Resource Identifier	ALS	LWD	Leader	Personnel	Request #	Hours	Reporting Location
HC2 PVT PACIFIC OASIS 15		9/3	ALEX HESS	20	C-15	0700-1900	WARD FIELD CAMP
HC2 PVT PONDEROSA 54		9/7	SAUL BECCERA	20	C-54	0700-1900	WARD FIELD CAMP
HC2 PVT THREE STRIPES 55		9/7	MELECIO CONTRER	20	C-55	0700-1900	WARD FIELD CAMP
EST6 OES 6805F	X	8/28	ROBERT PETERSON	18	E-271	0700-1900	WARD FIELD CAMP
ENG3 PVT ALPINE WF E-7		9/2	LEIF LARSON	3	E-220	0700-1900	WARD FIELD CAMP
ENG3 PVT ALPINE WF E-8		9/2	STEVEN VIGIL	3	E-121	0700-1900	WARD FIELD CAMP
ENG3 PVT SABINO 134		9/3	BRYAN CARDENAS	3	E-134	0700-1900	WARD FIELD CAMP
ENG4 PVT ID HEATSEEKER 233		9/3	HEATH ORABANEC	3	E-233	0700-1900	WARD FIELD CAMP
ENG4 PVT ID HEATSEEKER 234		9/3	AUSTIN WELLS	3	E-234	0700-1900	WARD FIELD CAMP
ENG4 PVT TANGO KILO 122		9/3	DON BEARD	3	E-122	0700-1900	WARD FIELD CAMP
ENG4 BLM IDTFD E2413		9/3	RAD KULASEVIC	5	E-251	0700-1900	WARD FIELD CAMP
ENG4 PVT PALLAS 133		9/3	FRED AVILA	3	E-133	0700-1900	WARD FIELD CAMP
ENG5 PVT RATTLESNAKE 209		9/2	RICHARD OROSCO	3	E-209	0700-1900	WARD FIELD CAMP
ENG5 PVT DB JET 127		9/3	PHILLIP CRISTIE	3	E-127	0700-1900	WARD FIELD CAMP
ENG5 PVT 3 RIVERS 137		9/4	MURRAY HANNAWEEKA	3	E-137	0700-1900	WARD FIELD CAMP
ENG5 PVT WINTERS 401		9/8	LARRY WINTERS	3	E-401	0700-1900	WARD FIELD CAMP
ENG5 PVT GCT LAND 2		9/5	ROBERT MCGIRR	3	E-2	0700-1900	WARD FIELD CAMP
ENG6 PVT WINDSWEPT 402		9/8	DAVID MARIK	3	E-402	0700-1900	WARD FIELD CAMP
ENG6 PVT AMERICAN 114		9/2	BILL MORRIS	3	E-114	0700-1900	WARD FIELD CAMP
ENG6 PVT PINO ONE 145		9/4	DARREN PINO	3	E-145	0700-1900	WARD FIELD CAMP
ENG6 PVT AMERICAN 151		9/2	LOUIS LIPHART	3	E-151	0700-1900	WARD FIELD CAMP
ENG6 UTSWS E664		9/8	LUCAS TWITCHELL	5	E-397	0700-1900	WARD FIELD CAMP

**6. Work Assignments:**  
Keep the fire South of Highway 199 and East of the South Fork/G-O roads in order to protect the natural, cultural, and infrastructure values utilizing dozer and handline, firing where appropriate, and providing holding forces during operations.

**7. Special Instructions:**  
-Be aware of retardant avoidance areas, mine shafts and naturally occurring asbestos.  
-Maintain awareness of fire conditions affecting road systems in your area that might be a primary escape route and establish secondary egress to safe area. Ensure trigger points are established and re-evaluated throughout the shift.  
**Safety Officers assigned to Division VV/PP:** Keith Aggson(t)  
**REMS 2 & 3 assigned to Branch XX**

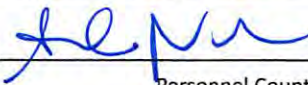
8. Communications								
Name	Ch	Function	Rx Freq	Rx Tone	Tx Freq	Tx Tone	Mode	Notes
NIFC C3	1	COMMAND	170.4250	(T3) 131.8	168.0750	(T3) 131.8	A	CAMP 6
NIFC T6	10	TACTICAL	168.2500	(T3) 131.8	168.2500	(T3) 131.8	A	
CALCORD	15	TACTICAL	156.0750	(T6) 156.7	156.0750	(T6) 156.7	A	EMS AIR COORDINATION
A/G TAC	14	A/G TAC	169.4875	0.0	169.4875	0.0	A	
AIRGUARD	16	AIRGUARD	168.6250	0.0	168.6250	(T1) 110.9	A	

<b>9. Prepared by: Name:</b>	Hudley/Nahas(t)/Sketo(t)/Moreno(t)	RESL	Signature:
<b>ICS 204</b>	Date/Time: 8/26/2023	2200	Personnel Count: 136



# ASSIGNMENT LIST (ICS 204 WF)

CONTROLLED UNCLASSIFIED INFORMATION//BASIC

<b>1. Incident Name:</b>		<b>2. Operational Period:</b>				<b>3. Branch</b>		<b>Division</b>	
<b>SMITH RIVER COMPLEX - SOUTH</b>		Date From: 08/27/23	Date To: 08/28/23			<b>XX</b>		<b>YY</b>	
		Time From: 0700	Time To: 0700			Page 1 of 2		Yankee-Yankee	
<b>4. Operations Personnel:</b>									
Operations Section Chief: <b>Scott Grasmick / Nick Cleary(t)</b>					Planning Ops: <b>Tom Himmelrich / Trevor Johnson</b>				
Branch Director: <b>Joe Tieso</b>					Night Ops: <b>Joe Reyes</b>				
Division/Group Supervisor: <b>T. McNeal / K. McMillen(t)</b>					Air Attack:				
<b>5. Resources Assigned:</b>									
<b>**Shaded resources below are 24 hour**</b>									
Resource Identifier	ALS	LWD	Leader	Personnel	Request #	Hours	Reporting Location		
HC1 TAHOE IHC		9/3	GERMAN GUERRERO	21	C-28	0700-1900	WARD FIELD CAMP		
HC2I SQF BLACK EAGLES		9/5	GUSTAVO SANTOYO	21	C-33	0700-1900	WARD FIELD CAMP		
HC2I KRN GOLDEN EMPIRE C10		9/6	NATHANIEL PREST	25	C-34	0700-1900	WARD FIELD CAMP		
HC2I BLM ARAVAIPA IHC		9/9	WADE IRISH	21	C-43	0700-1900	WARD FIELD CAMP		
HC2 PVT WEST COAST 16		9/3	JUAN RAMOS	20	C-16	0700-1900	WARD FIELD CAMP		
HC2 PVT BLUE MOUNTAIN 5		9/2	JUAN ESPINOSA	20	C-5	0700-1900	WARD FIELD CAMP		
TF TNF 4662		9/8	RYAN HERRERA	24	E-366	0700-1900	WARD FIELD CAMP		
ENG1 GASQUET E-75		8/28	WALTER FRYE	5		0700-1900	WARD FIELD CAMP		
ENG6 PVT KL FARMS E-02		9/2	STEPHEN TRAIN	3	E-120	0700-1900	WARD FIELD CAMP		
ENG6 PVT KL FARMS E-13		9/2	IAN SHELLY	3	E-147	0700-1900	WARD FIELD CAMP		
ENG6 PVT PIERCE FIRE 158		9/1	JORDAN HOEFLING	3	E-158	0700-1900	WARD FIELD CAMP		
ENG6 PVT GE FORESTRY 204		9/2	ARMANDO TOBAR	3	E-204	0700-1900	WARD FIELD CAMP		
ENG6 PVT TETON 222		9/3	RYAN TURNER	4	E-222	0700-1900	WARD FIELD CAMP		
DO22 PVT MORRISON 296		9/7	MATTHEW MORRISON	2	E-296	0700-1900	WARD FIELD CAMP		
DO22 PVT LEESVILLE 293		9/4	NATE RUBINI	2	E-293	0700-1900	WARD FIELD CAMP		
DO22 PVT KENNETH 294		9/5	KENNY DREW	2	E-294	0700-1900	WARD FIELD CAMP		
WTT2 ANF WT-34		9/8	ALAN MARQUEZ	2	E-346	0700-1900	WARD FIELD CAMP		
WTT2 GASQUET WT76		8/28	GUY LATHAM	2		0700-1900	WARD FIELD CAMP		
<b>6. Work Assignments:</b>									
Keep the fire South of Highway 199 and East of the South Fork/G-O roads in order to protect the natural, cultural, and infrastructure values utilizing dozer and handline, firing where appropriate, and providing holding forces during operations.									
<b>7. Special Instructions:</b>									
-Be aware of retardant avoidance areas, mine shafts and naturally occurring asbestos.									
-Maintain awareness of fire conditions affecting road systems in your area that might be a primary escape route and establish secondary egress to safe area. Ensure trigger points are established and re-evaluated throughout the shift.									
Safety Officer(s) assigned to Division YY: Pat Cockrum									
REMS 2 & 3 assigned to Branch XX									
REAFs: Leonard, Meingast									
<b>8. Communications</b>									
Name	Ch	Function	Rx Freq	Rx Tone	Tx Freq	Tx Tone	Mode	Notes	
NIFC C3	1	COMMAND	170.4250	(T3) 131.8	168.0750	(T3) 131.8	A	CAMP 6	
VFIRE 22	11	TACTICAL	154.2650	(T6) 156.7	154.2650	(T6) 156.7	A		
CALCORD	15	TACTICAL	156.0750	(T6) 156.7	156.0750	(T6) 156.7	A	EMS AIR COORDINATION	
A/G TAC	14	A/G TAC	169.4875	0.0	169.4875	0.0	A		
AIRGUARD	16	AIRGUARD	168.6250	0.0	168.6250	(T1) 110.9	A		
<b>9. Prepared by: Name:</b> Hudley/Nahas(t)/Sketo(t)/Moreno(t) RESL									
						Signature: 			
<b>ICS 204</b>		Date/Time: 8/26/2023 2200			Personnel Count: 183				

# ASSIGNMENT LIST (ICS 204 WF)

CONTROLLED UNCLASSIFIED INFORMATION//BASIC

<b>1. Incident Name:</b>	<b>2. Operational Period:</b>	<b>3. Branch</b>	<b>Division</b>
<b>SMITH RIVER COMPLEX - SOUTH</b>	Date From: 08/27/23      Date To: 08/28/23 Time From: 0700              Time To: 0700	<b>XX</b>	<b>YY</b>

<b>4. Operations Personnel:</b>		Page 2 of 2	Yankee-Yankee
Operations Section Chief: <b>Scott Grasmick / Nick Cleary(t)</b>		Planning Ops: <b>Tom Himmelrich / Trevor Johnson</b>	
Branch Director: <b>Joe Tieso</b>		Night Ops: <b>Joe Reyes</b>	
Division/Group Supervisor: <b>T. McNeal / K. McMillen(t)</b>		Air Attack:	

5. Resources Assigned:		**Shaded resources below are 24 hour**					
Resource Identifier	ALS	LWD	Leader	Personnel	Request #	Hours	Reporting Location
MBM2 PVT ZEB'S TREE 335		9/7	RON WAKE	2	E-335	0700-1900	WARD FIELD
MBM2 PVT NORTHSTATE 230		9/4	TYLER WAITS	2	E-230	0700-1900	WARD FIELD
MBM2 PVT MURRAY 337		9/8	JEFF OCHS	2	E-337	0700-1900	WARD FIELD
FMOD TAYLOR FALLING 155		9/2	CHRIS TAYLOR	1	O-155	0700-1900	WARD FIELD
FMOD REDWOOD EMPIRE 157		9/2	JESSE GONZALEZ	2	O-157	0700-1900	WARD FIELD
TFLD EMM		9/1	KEVIN EMM	1	O-224	0700-1900	WARD FIELD
HEQB BAUMGARTNER		9/7	KYLE BAUMGARTNER	1	O-268	0700-1900	WARD FIELD
HEQB(T) HERRERA		9/7	GABRIEL HERRERA	1	O-269	0700-1900	WARD FIELD
HEQB(T) HERSHMAN		9/7	LOGAN HERSHMAN	1	O-393	0700-1900	WARD FIELD
EMPF PETERS	X	9/1	DUSTIN PETERS	1	O-92	0700-1900	WARD FIELD
EMPF QUINTANAR	X	9/1	ARMEN QUINTANAR	1	O-94	0700-1900	WARD FIELD

**6. Work Assignments:**  
 Keep the fire South of Highway 199 and East of the South Fork/G-O roads in order to protect the natural, cultural, and infrastructure values utilizing dozer and handline, firing where appropriate, and providing holding forces during operations.

**7. Special Instructions:**  
 -Be aware of retardant avoidance areas, mine shafts and naturally occurring asbestos.  
 -Maintain awareness of fire conditions affecting road systems in your area that might be a primary escape route and establish secondary egress to safe area. Ensure trigger points are established and re-evaluated throughout the shift.  
**Safety Officer(s) assigned to Division YY:** Pat Cockrum  
**REMS 2 & 3** assigned to Branch XX  
**REAFs:** Leonard, Meingast

8. Communications								
Name	Ch	Function	Rx Freq	Rx Tone	Tx Freq	Tx Tone	Mode	Notes
NIFC C3	1	COMMAND	170.4250	(T3) 131.8	168.0750	(T3) 131.8	A	CAMP 6
VFIRE 22	11	TACTICAL	154.2650	(T6) 156.7	154.2650	(T6) 156.7	A	
CALCORD	15	TACTICAL	156.0750	(T6) 156.7	156.0750	(T6) 156.7	A	EMS AIR COORDINATION
A/G TAC	14	A/G TAC	169.4875	0.0	169.4875	0.0	A	
AIRGUARD	16	AIRGUARD	168.6250	0.0	168.6250	(T1) 110.9	A	

**9. Prepared by: Name:** Hudley/Nahas(t)/Sketo(t)/Moreno(t)      RESL  
 Signature:   
**ICS 204**      Date/Time: 8/26/2023 2200      Personnel Count: 15





# ASSIGNMENT LIST (ICS 204 WF)

CONTROLLED UNCLASSIFIED INFORMATION//BASIC

<b>1. Incident Name:</b> <b>SMITH RIVER COMPLEX - SOUTH</b>	<b>2. Operational Period:</b> Date From: 08/27/23    Date To: 08/28/23 Time From: 0700    Time To: 0700	<b>3. Branch</b> <b>Division</b>  <b>NIGHT STR GRP</b>
--	---	--

Page 1 of 1

<b>4. Operations Personnel:</b>	
Operations Section Chief: <b>Scott Grasmick / Nick Cleary(t)</b>	Planning Ops: <b>Tom Himmelrich / Trevor Johnson</b>
Branch Director:	Night Ops: <b>Joe Reyes</b>
Division/Group Supervisor: <b>Ryan Edmondson / Jonathan Cripe(t)</b>	Air Attack:

<b>5. Resources Assigned:</b>		<b>**Shaded resources below are 24 hour**</b>					
Resource Identifier	ALS	LWD	Leader	Personnel	Request #	Hours	Reporting Location
HC2 PVT PONDEROSA 53		9/7	SERGIO BENCOMO	20	C-53	1900-0700	WARD FIELD CAMP
EST3 ANF 1605C		9/7	SALVADOR CORTEZ	26	E-381	1900-0700	WARD FIELD CAMP
ENG4 PVT GRIZ ONE 126		9/4	CORY TABER	3	E-126	1900-0700	WARD FIELD CAMP
ENG4 PVT BLAZE RUNNER 128		9/4	AARON CARLSON	3	E-128	1900-0700	WARD FIELD CAMP
ENG4 PVT GRIZ ONE 129		9/4	JOHN CRAFT	3	E-129	1900-0700	WARD FIELD CAMP
ENG4 PVT BLAZE RUNNER 132		9/4	ADAN ESTRADA	3	E-132	1900-0700	WARD FIELD CAMP
ENG5 PVT TIMBERMAN 150		9/4	JONATHAN TALLUM	3	E-150	1900-0700	WARD FIELD CAMP
ENG5 PVT NORTH UTAH 266		9/7		3	E-266	1900-0700	WARD FIELD CAMP
ENG6 PVT JNJ 125		9/4	NEIL WILLIAMS	3	E-125	1900-0700	WARD FIELD CAMP
ENG6 PVT FIRE SOLUTIONS 263		9/4	BRIANNE SHOMATE	3	E-263	1900-0700	WARD FIELD CAMP
ENG6 PVT FIRE SOLUTIONS 265		9/4	DEREK MESTROVICH	3	E-265	1900-0700	WARD FIELD CAMP
ENG6 PVT BLAZE RUNNER 268		9/4	JERRY FUGATE	3	E-268	1900-0700	WARD FIELD CAMP
ENG6 PVT BLAZE RUNNER 269		9/4	COREY CAYWOOD	3	E-269	1900-0700	WARD FIELD CAMP
HEQB MATTSON		9/6	ERICK MATTSON	1	O-264	1900-0700	WARD FIELD CAMP

**6. Work Assignments:**  
Patrol, re-enforce, improve and continue work in Divisions and Structure Groups.

**7. Special Instructions:**  
 -REMS and Ambulance 3 is available out of Gasquet  
 -Be aware of retardant avoidance areas, mine shafts and naturally occurring asbestos.  
 -Maintain awareness of fire conditions affecting road systems in your area that might be a primary escape route and establish secondary egress to safe area. Ensure trigger points are established and re-evaluated throughout the shift.  
**Safety Officers assigned to Division Night:** Lucas Lambert

**8. Communications**

Name	Ch	Function	Rx Freq	Rx Tone	Tx Freq	Tx Tone	Mode	Notes
NIFC C3	1	COMMAND	170.4250	(T3) 131.8	168.0750	(T3) 131.8	A	CAMP 6
VFIRE 24	12	TACTICAL	154.2725	(T6) 156.7	154.2725	(T6) 156.7	A	GASQUET STR GROUP/NIG
CALCORD	15	TACTICAL	156.0750	(T6) 156.7	156.0750	(T6) 156.7	A	EMS AIR COORDINATION
A/G TAC	14	A/G TAC	169.4875	0.0	169.4875	0.0	A	
AIRGUARD	16	AIRGUARD	168.6250	0.0	168.6250	(T1) 110.9	A	

**9. Prepared by: Name:**                      Hudley/Nahas(t)/Sketo(t)/Moreno(t)                      RESL  
 Signature:                      Personnel Count: 80







AIR OPERATIONS SUMMARY ICS-220						Time Prepared 1900		Date Prepared Saturday, August 26, 2023			Prepared By John Crotty/Steve Markason		
Incident Name / Number		Sunrise	Startup	Cutoff	Sunset	Shutdown 20:27		Operational Period - Date Sunday August 27, 2023			Operational Period - Time 0700-2100		
SMITH RIVER COMPLEX - CA-SRF-000968		6:35	7:05	19:27	7:57:00 PM								
<b>General Remarks, Safety Notes, Hazards, Air Operations Special Equipment, etc.</b> TRACK ALL DIPSITE LOCATIONS / NUMBER OF DIPS / GALLONS TAKEN. TRACK ALL DROP LOCATIONS / NUMBER OF DROPS / GALLONS DROPPED. All GPS DATA TO BE COLLECTED IN <u>DEGREES, MINUTES, DECIMAL MINUTES</u> FORMAT. <i>AVOID Aerial Application of Retardant / Foam / Agent within 300' of Waterways, Bodies of Water, etc.            If Retardant / Foam / Agent is Dropped Within These Areas Immediately Notify the AOB and Provide the Following Information: Lat / Long, Estimated Number of Gallons and a Map Detailing The Area. Watch for Powerlines. Caution when operating in non-TFR areas.</i>						<b>Helibase Information</b> Name Gasquet Latitude 41 50.667 Longitude 123 59.455  Name Cave Junction Latitude 42 06.250 Longitude 123 40.916 (use page 2 if needed)		<b>TFR Information</b> Request # Rectangle <b>NM</b> Altitude: 8,000 <b>MSL</b> Multi <b>Lat</b> Centerpoint: Multi <b>Long</b> NOTAMS: 3/1109 Frequency 126.0750 <a href="http://tfr.faa.gov/tfr2/list.html">http://tfr.faa.gov/tfr2/list.html</a>			<b>Rescue Ship Information</b> Day Hoist Name Kern H-407 Phone Make/Model Bell 205 Location Siskiyou Night Hoist SAC METRO 1 Bell 212 Benton <b>Request Procedure for These Aircraft:</b> See Below for OR Aircraft See Medical Plan For Additional Info		
Frequencies	TX	Tone	RX	Tone	AM / FM	Position	Name	Phone	Trainee	Phone			
Command-South (Linked)	See South 205				FM	AOBD	John Crotty	805-440-6186					
Command-North (Linked)	See North 205				FM	ASGS	Curt Warner	805-478-1231					
AIR / GROUND - TACTICAL	169.4875	0.0000	169.4875	0.0000	FM	HEBM	George Leite (Cave)	360-581-8428					
AIR/AIR ROTARY WING	123.7250	0.0000	123.7250	0.0000	AM	HEBM	Natalie Bench (Crescent)	928-358-0963					
TFR	126.0750	0.000	126.0750	0.0000	AM	HLCO	Casey Jones	559-696-3878	Antonio Jimenez	530-310-5797			
AIR TACTICS	173.7000	0.0000	173.7000	0.0000	FM	ATGS	Rick Thompson	970-209-6989					
AIR/GROUND COMMAND	173.8500	0.0000	173.8500	0.0000	AM	ATGS	Lucas Rhea	702-521-8406	Seth Alberts	308-215-0425			
VMED 29-MEDICAL North	155.3475	156.7	155.3475	156.7	AM	UR31	Steve Ramaekers	208-473-8708					
TOLC	168.1375	0.0000	168.1375	0.0000	FM	UR32/34	Zach Freundlich	508-380-1904					
CALCORD - MEDICAL South	156.0750	156.7 (6)	156.0750	156.7 (6)	FM	NORTH AOBD	Steve Markason	307-690-5185					
AIRGUARD - Emergency Only	168.6250	110.9 (1)	168.6250	0.0000	FM	NORTH ASGS	Bert Smith (T)	406-660-7371					
*See IAP for IA 205's*							Cave Helibase	208-891-6878		ivhb2023@gmail.com			
HELICOPTERS ( Use page 2 if Needed )													
FAA #	Type	Make/Model	Helibase	Avail	Start	Remarks	FAA #	Type	Make/Model	Helibase	Avail	Start	Remarks
HT 16FH	1	UH-60	Cave	0800	0830	LL BUCKET	HB 625CK	1	S-61N	Merlin	0800	0830	LL BUCKET
HB 534VG	1	UH-60	Cave	0800	0830	LL BUCKET	HT 917	1	S-61	Merlin	0800	0830	LL TANK
HB 391SH	1	UH-60	Cave	0800	0830	LL BUCKET	H-18BH	3	Bell 407	Cave	0800	0830	HLCO
HB 699RH	1	KMAX	Cave	0800	0830	LL BUCKET	H-132BH	3	AS-350B3	Cave	0800	0830	PAX/RECON/LL/PSD
H-527	2	Bell 212	Cave	0800	0830	LL BUCKET	H-942AE	3	AS-350B3E	Crescent	0800	0830	PAX/RECON/LL/PSD
UR31	3	Alta X	Gasquet	TBD	TBD	IR/PSD (Independence)	UR32/34	3	Alta X/DJI	Cave	TBD	TBD	IR/PSD (Black Module)
UR33	3	Alta X	Gasquet	TBD	TBD	IR (Eagle Lake WFM)	UR35	3	DJI M600	Cave	TBD	TBD	IR/PSD (Lakeview IHC - Night)
UF1	1	Aerovel Flextr	Gasquet	TBD	TBD	IR (Stroud Module)							
<b>SOUTH</b>	<b>MEDICAL A/C</b>						<b>NORTH</b>	<b>MEDICAL A/C</b>					
TBD	3	MH-65	Humboldt			Coast Guard	20695	1	HH-60M	Roseburg			OR National Guard
H-902	2	UH1	Kneeland			Cal Fire	H-38HX	3	AS-250B3	Sun River			Shorthaul - 187 nm
H-14	3	A-Star B3	Redding			CHP							
FIXED WING ( Use Page 2 if Needed )													
FAA #	Type	Make/Model	Base	Avail	Start	Remarks	FAA #	Type	Make/Model	Base	Avail	Start	Remarks
N-7MZ	1	C-501	RDD	0800	0830	ATGS (RDD)	N-688TM	1	AC-680V	MED	800	830	ATGS (MFR)

# HEALTH AND SAFETY MESSAGE

*SAFETY* starts with *YOU*

We are ALL accountable for SAFE behaviors

<b>Incident:</b> Smith River Complex	<b>Date:</b> August 27,2023	<b>Shift:</b> Day /night
---	--------------------------------	-----------------------------

**SAFETY THOUGHT**  
Headlights on, buckle up, slow down, clean windshields.

<b>MAJOR HAZARDS AND RISKS</b>		
<ul style="list-style-type: none"> <li>➤ Hazard Trees</li> <li>➤ Driving and Traffic</li> <li>➤ Air Operations</li> <li>➤ Extended Medical Timeframes</li> </ul>	<ul style="list-style-type: none"> <li>➤ Fatigue and overexertion</li> <li>➤ Heavy Equipment</li> <li>➤ Spot fires</li> <li>➤ Steep Terrain/Rolling Debris</li> </ul>	<ul style="list-style-type: none"> <li>➤ Poor Communications</li> <li>➤ Spike Camp</li> <li>➤ Bucket drops</li> </ul>

## \*\*YOU ARE RESPONSIBLE FOR YOUR OWN SAFETY\*\*

-If you practice safety, your co-workers will appreciate it and your personal welfare can be protected-

**Remember that it is your life that is on the line. You have the right to voice your opinion and concerns about personal safety. Don't hesitate to speak up if you feel uncomfortable with the situation or the circumstance in which you are. Firefighting is inherently hazardous. Discuss your concerns with your immediate supervisor or with a Safety Officer. We are in this together!**



## FIRE SAFETY BEGINS WITH U



- ✓ Most accidents happen on the smaller fires or on isolated portions of larger fires.
- ✓ Most fires are innocent in appearance before unexpected shifts in wind direction and/or speed results in "flare-ups" or "extreme fire behavior." In some cases, tragedies occur in the mop-up stage.
- ✓ Flare-ups generally occur in deceptively light fuels, such as grass and light brush.
- ✓ Fires run uphill surprisingly fast in chimneys, gullies, and on steep slopes.

Safety Officers:

Rick Bertram SOFC    Ron Plummer SOF2

# ICS 205 - INCIDENT RADIO COMMUNICATIONS PLAN

CONTROLLED UNCLASSIFIED  
INFORMATION//BASIC

<b>1. Incident Name:</b> SMITH RIVER COMPLEX - SOUTH Incident Channels	<b>2. Date/Time Prepared</b> Date: 08/26/2023 Time: 1930	<b>3. Operational Period:</b> Date From: 08/27/23      Date To: 08/28/23 Time From: 0700          Time To: 0700
--	--	---

4. Communications									
Ch#	Function	Name	Assigned To	Rx Freq	Rx Tone	Tx Freq	Tx Tone	Mode	Notes
1	COMMAND	NIFC C3	ALL DIVS	170.4250	(T3) 131.8	168.0750	(T3) 131.8	A	CAMP 6
2	COMMAND	NIFC C34	ALL DIVS	173.9750	(T3) 131.8	164.8625	(T3) 131.8	A	MONKEY RIDGE
3	COMMAND	NIFC C35	ALL DIVS	173.8625	(T3) 131.8	163.8250	(T3) 131.8	A	SHIP MTN LOOKOUT
4	COMMAND	NIFC C48	ALL DIVS	165.4625	(T3) 131.8	162.1750	(T3) 131.8	A	HIGH DIVIDE
5	FUTURE	NIFC C55	NOT IN USE	173.8375	(T3) 131.8	165.5125	(T3) 131.8	A	FUTURE USE
6	TACTICAL	NIFC T1	DIVIDE STR GRP, D, NIGHT B/D	168.0500	(T3) 131.8	168.0500	(T3) 131.8	A	
7	TACTICAL	NIFC T3	A	168.6000	(T3) 131.8	168.6000	(T3) 131.8	A	
8	TACTICAL	NIFC T4	MM	166.7250	(T3) 131.8	166.7250	(T3) 131.8	A	
9	TACTICAL	NIFC T5	PP, B	166.7750	(T3) 131.8	166.7750	(T3) 131.8	A	
10	TACTICAL	NIFC T6	SS, VV, ALL CONTINGENCY	168.2500	(T3) 131.8	168.2500	(T3) 131.8	A	
11	TACTICAL	VFIRE 22	YY, NIGHT YY	154.2650	(T6) 156.7	154.2650	(T6) 156.7	A	
12	TACTICAL	VFIRE 24	GASQT/NIGHT STR GP	154.2725	(T6) 156.7	154.2725	(T6) 156.7	A	GASQUET STR GROUP/NIGHT STR GROUP
13	A/G CMD	A/G CMD	ALL DIVS	173.8500	0.0	173.8500	0.0	A	OPS, BRANCH AND DIVISION USE
14	A/G TAC	A/G TAC	ALL DIVS	169.4875	0.0	169.4875	0.0	A	AIR TO GROUND TACTICAL
15	TACTICAL	CALCORD	ALL DIVS	156.0750	(T6) 156.7	156.0750	(T6) 156.7	A	EMS AIR COORDINATION
16	AIRGUARD	AIRGUARD	ALL DIVS	168.6250	0.0	168.6250	(T1) 110.9	A	EMERGENCY
17									
18									
19									
20	AIRGUARD	AIRGUARD	ALL DIVS	168.6250	0.0	168.6250	(T1) 110.9	A	EMERGENCY

**5. Special Instructions**  
 CURRENT CLONE: SSR825. COMMAND CHANNELS LINKED. FIND WHICH ONE WORKS BEST IN YOUR OPERATIONAL AREA. SMITH RIVER COMPLEX - SOUTH COMMUNICATIONS PHONE # 760-220-2863

<b>6. Prepared by (Communications Unit Leader): Name:</b> GLENDON CHAN	Signature: <i>Glendon Chan</i>
ICS 205 - CONTROLLED UNCLASSIFIED INFORMATION//BASIC	Date/Time: 08/26/23      1930

# ICS 205 - IA ZONE INCIDENT RADIO COMMUNICATIONS PLAN

CONTROLLED UNCLASSIFIED INFORMATION//BASIC

<b>1. Incident Name:</b> SMITH RIVER COMPLEX - SOUTH Page 2	<b>2. Date/Time Prepared</b> Date: 08/26/2023 Time: 1930	<b>3. Operational Period:</b> Date From: 08/27/23      Date To: 08/28/23 Time From: 0700          Time To: 0700
---	--	---

4. Communications									
Ch#	Function	Name	Assigned To	Rx Freq	Rx Tone	Tx Freq	Tx Tone	Mode	Notes
1	FOREST	SRF 12	I/A CMD	172.3750	0.0	164.1750	(T12) 127.3	A	GORDON MOUNTAIN, TONE 12
2	FOREST	SRF 4	I/A CMD	172.3750	0.0	164.1750	(T4) 136.5	A	SHIP MOUNTAIN, TONE 4
3	FOREST	SRF 1	I/A CMD	172.3750	0.0	164.1750	(T1) 110.9	A	MONKEY RIDGE, TONE 1
4	DISPATCH	HUU RPT	DISPATCH	151.2500	(T1) 110.9	159.4050	(T14) 151.4	A	Tx 151.4 T14, Rx 110.9 T1
5	TACTICAL	NIFC T2	I/A TAC	168.2000	0.0	168.2000	0.0	A	NIFC TAC 2
6	TACTICAL	R5 T4	I/A TAC	166.5500	0.0	166.5500	0.0	A	R-5 TAC 4
7	TACTICAL	R5 T5	I/A TAC	167.1125	0.0	167.1125	0.0	A	R-5 TAC 5
8	TACTICAL	R5 PROJ	I/A TAC	168.6625	0.0	168.6625	0.0	A	R5 PROJECT
9	TACTICAL	VTAC 14	I/A TAC	159.4725	(T6) 156.7	159.4725	(T6) 156.7	A	Tx/Rx 156.7 Tone 6
10	TACTICAL	CDF T3	I/A TAC	151.1750	(T16) 192.8	151.1750	(T16) 192.8	A	CDF Tac 3 Tx/Rx 192.8 Tone 16
11	TACTICAL	R5 T6	I/A TAC	168.2375	0.0	168.2375	0.0	A	R-5 TAC 6
12	LOCAL	GASQ>16	LOCAL	154.4150	0.0	154.0100	(T16) 192.8	A	Gasquet VFD Rpt Tx 192.8 Tone 16
13	A/G	AG-43	ALL DIVS	167.6000	0.0	167.6000	0.0	A	AIR TO GROUND PRIMAR
14	A/G	AG-08	ALL DIVS	166.8750	0.0	166.8750	0.0	A	AIR TO GROUND SECONDARY
15	TACTICAL	CALCORD	MEDICAL EVAC	156.0750	(T6) 156.7	156.0750	(T6) 156.7	A	EMS AIR COORDINATION
16	AIRGUARD	AIRGUARD	EMERGENCY	168.6250	0.0	168.6250	(T1) 110.9	A	EMERGENCY
17									
18									
19									
20	AIRGUARD	AIRGUARD	ALL DIVS	168.6250	0.0	168.6250	(T1) 110.9	A	

**5. Special Instructions**  
 CLONE NAME: SSRCA25 SMITH RIVER COMPLEX SOUTH IA ZONE

**6. Prepared by (Communications Unit Leader):** Name: **GLENDON CHAN**      Signature: *Glendon Chan*

# INCIDENT RADIO COMMUNICATIONS PLAN (ICS 205)

Controlled Unclassified Information//Basic

<b>1. Incident Name:</b>	<b>2. Date/Time Prepared:</b>	<b>3. Operational Period:</b>	
SMITH RIVER COMPLEX NORTH	Date: 08/25/2023 Time: 18:00	Date/Time From: 08/27/2023 0600	Date/Time To: 08/28/2023 0600

4. Basic Radio Channel Use:										
Zone Group	Ch #	Function	Channel Name/Trunked Radio System Talkgroup	Assignment	RX Freq	RX Tone/NAC	TX Freq	TX Tone/NAC	Mode (A,D, or M)	Remarks
	1	TACTICAL	TAC 1	UNASSIGNED	168.0500	192.8	168.0500	192.8	A	UNASSIGNED
	2	TACTICAL	TAC 2	DIV I	168.2000	192.8	168.2000	192.8	A	
	3	TACTICAL	TAC 3	DIV K	168.6000	192.8	168.6000	192.8	A	
	4	TACTICAL	TAC 4	STRUCTURE E	166.7250	192.8	166.7250	192.8	A	
	5	TACTICAL	TAC 5	DIV H	166.7750	192.8	166.7750	192.8	A	
	6	TACTICAL	TAC 6	STRUCTURE W	168.2500	192.8	168.2500	192.8	A	
	7	CMD	CMD 7	ALL DIV	172.9875	162.2	165.0500	162.2	A	BOLAN MOUNTAIN (E)
	8	CMD	CMD 8	ALL DIV	170.3000	162.2	164.0000	162.2	A	FIDDLER MOUNTAIN (N)
	9	CMD	CMD 9	ALL DIV	169.0750	162.2	162.4125	162.2	A	MONKEY CR RIDGE (S)
	10	TACTICAL	VTAC 11	UNASSIGNED	151.1375	156.7	151.1375	156.7	A	UNASSIGNED
	11	TACTICAL	NIFC T1	DIV D	168.0500	131.8	168.0500	131.8	A	
	12	TACTICAL	NIFC T4	DIV MM	166.7250	131.8	166.7250	131.8	A	
	13	AIR TO GROUND	A/G CMD	ALL DIVS	173.8500	000.0	173.8500	000.0	A	BRANCH AND DIVISION USE
	14	AIR TO GROUND	A/G TAC	ALL DIVS	169.4875	000.0	169.4875	000.0	A	AIR TO GROUND TACTICAL
	15	AIR MEDICAL	VMED 29	ALL DIVS	155.3475	156.7	155.3475	156.7	A	EMS AIR COORDINATION
	16	AIR TO GROUND	AIRGUARD	ALL DIVS	168.6250	000.0	168.6250	110.9	A	EMERGENCY AIRCRAFT CONTACT

**5. Special Instructions:**

<b>6. Prepared By COML</b>	Name: Bruce Hanna	Signature: /s/ Bruce Hanna
ICS 205	IAP Page	Date/Time: 8/26/2023 18:00





**LOGISTICS MESSAGE**

**1. Incident Name:**  
SMITH RIVER COMPLEX - SOUTH

**2. Operational Period:** Date From: 8/27/2023 Date To: 8/28/2023  
Time From: 0700 Time To: 0700



**Kitchen Hours**

Breakfast 0600 -1000

Dinner 1800 - 2200

**Shower Hours**

0500 - 1200, 1400 - 2200

**Laundry Hours**

0530 - 2300

Gasquet Only

**Fuel Tenders Hours**

0630 - 1200, 1400 - 2100

Vehicles are only permitted to refuel at the designated fueling station.

No refueling permitted in camp.

**Weed Wash Hours**

0630 - 1200, 1400 - 2100

Lunches, water, gatorade and ice are available next to the kitchen at the Gasquet Base Camp.

## INCIDENT LINE SUPPLY ORDER FORM

<b>INCIDENT NAME:</b>	<b>DATE:</b>	<b>TIME:</b>
<b>DIVS:</b>	<b>DATE:</b>	<b>TIME:</b>
		<b>ORDER #:</b>

**\*\*ORDERS NEEDED FOR TODAY, NEED TO PLACE BY 10:00. ORDERS NEEDED FOR TOMORROW, NEED TO BE PLACED BY 15:00. ALL CREW ORDERS WILL BE PLACED THROUGH DIVS.\*\***

<b>DELIVERY LOCATION:</b>	<b>MODE OF TRANSPORTATION:</b>
<b>LAT:</b>	<b>GROUND SUPPORT</b>
<b>LONG:</b>	<b>HELIBASE:</b>
<b>DATE NEEDED:</b>	<b>WEIGHT:</b>
<b>TIME NEEDED (ASAP IS NOT A TIME):</b>	

<b>Order received in supply:</b>	<b>Time:</b>	<b>Name:</b>
<b>Order shipped through transportation:</b>	<b>Time:</b>	<b>Name:</b>
<b>Order received by Helibase:</b>	<b>Time:</b>	<b>Name:</b>

### ITEMS ORDERED

#	QTY	Item	Pending	Shipped	#	QTY	Item	Pending	Shipped
1		Meals-Breakfasts			28		Lead Line ea		
2		Meals-Lunches			29		Cargo Net ea		
3		Meals-Dinners			30		Fiber Tape ea		
4		Meals-MRE's #of cases 12/case)			31		Backpack Pump, Full / Empty		
5		Water, Cubie ea. (5gals)			32		Sling Blivet, suppression		
6		Gatorade case			33		Folding Tank (1500 gal) ea		
7		Water, Bottles case			34		Pumpkin (1500,3000, 6000) ea		
8		Batteries, AA Box (24 ea.box)			35		Hose 1.5" (100'roll) ea		
9		Batteries: Specify Type: ea.			36		Hose 1" (100' roll) ea		
10		Flagging: Specific Type: roll			37		Hose ¾" (50' roll) ea		
11		Tarps/Plastic ea.ft/roll			38		Reducer, 1.5" x 1" NFES 0010 ea.		
12		Parachute Cord ft/roll			39		Reducer, 1" x ¾" 0733 ea		
13		Garbage Bags Box/ea.			40		Gated Y 1.5" 0231 ea		
14		20 Man First Aid Kit ea.			41		Gated Y 1" 0259 ea		
15		Coffee Kit w/propane ea.			42		Gated Y" ¾" 0904 ea		
16		Fuel, Unleaded gal			43		Shut-off Valve ¾" 0835 ea		
17		Fuel, Diesel gal			44		In-line T 1.5" x 1" 0731 ea		
18		Fuel, Drip Torch (3:1 mix) gal			45		Nozzle, 1.5" 0137 ea		
19		Bar Oil qt/ gal			46		Nozzle, 1" 0138 ea		
20		2-Cycle Oil qt			47		Nozzle, ¾" 0136 ea		
21		Drip Torches, Full / Empty ea			48		Chainsaw Kit ea		
22		Fusee case			49		Mark 3 Pump Kit w/ 10 gal raw gas & 2 qt. 2 cycle oil		
23		Shovel ea			50				
24		Pulaski ea			51		Lightweight Pump kit/ 5 gal raw gas & 1 qt 2 cycle oil		
25		Combi ea			52				
26		Tools (specify type) ea			53		Sprinkler Kit ea		
27		Swivel ea			54				

\*\*\*Communications to make a copy for Food if needed

**FINANCE MESSAGE**

**1. Incident Name:**  
SMITH RIVER COMPLEX - SOUTH

**2. Operational Period:** Date From: 8/27/2023 Date To: 8/28/2023  
Time From: 0700 Time To: 0700

**CTR and Shift Tickets:**

-If you have the ability to scan a QR code with your smartphone, scan the QR code at the bottom this page to get a fillable CTR or shift tickets. Using a .pdf format, you can scan and fill, then email to your Supervisor on the incident for signature and submission.

-Another option is to complete a paper CTR / Shift Ticket, get it signed by your supervisor on the fire, and take a picture of it.

**E-mailing CTRs and Shift Tickets**

**Subject line: SOUTH TIME**

**Include your Resource #**

**Email to: 2023.smithrivercomplex.finance@firenet.gov**

-If you are emailing your CTR, SHIFT TICKET, or any type of pay documentation to FINANCE, please put SOUTH TIME in the subject line.

-This email can be used to submit finance check-in documents too, like manifests, copies of resource orders, AD casual hire forms, receipts, etc. Be sure to include your Resource Order number somewhere in the body of the email.

-You're encouraged to submit time every two days if possible to stay current, and...

**REMEMBER, HARD PAPER COPIES OF DOCUMENTS ARE ALWAYS WELCOME TOO!!**

**Resources need to check with Finance:**

O-185	O-155	E-97	E-125	C-23
O-154	E-205	E-280	E-292	C-2
E-248	E-273			

**Contact us from: 0530 to 2200**

**Personnel Phone # 669-206-2317**

**Equipment/Contract Time Phone # 669-206-2316**

**NOTE: Contractor Evaluation forms can be found under the Incident QR code.**

E-mail QR



CTR/Shift Tickets



# Smith River Complex

## Fire Information

### Contacts

Send us pictures!

Send to:

[2023.smithrivercomplex@firenet.gov](mailto:2023.smithrivercomplex@firenet.gov)

Phone: 707.383.9727

### Snail Mail

Name, E# or O#

c/o Smith River Complex Incident

Del Norte Fairgrounds

421 U.S. 101

Crescent City, CA 95531



### About the Six Rivers National Forest – Where we Are

President Harry S. Truman established the **Six Rivers National Forest** by Presidential proclamation on June 3, 1947. The new Forest's initial 900,000 acres were carved from the western portions of the Klamath and Trinity National Forests and the southern portion of the Siskiyou National Forest.

The Six Rivers—named for the six major rivers that run within its boundaries: the Smith, Klamath, Trinity, Mad, Van Duzen and Eel—has more than 1,500 miles of streams, constituting 9 percent of California's total freshwater runoff. The Smith, Klamath, Trinity, and Eel River watersheds include more than 365 miles of designated Wild and Scenic River. The Salmon River on the Ukonom Ranger District is also a Wild and Scenic River. The Smith River is the only major undammed, naturally flowing river remaining in California. The rivers provide many recreational opportunities. While rafting and kayaking are popular water-based recreational activities, the resilient watersheds of the forest are perhaps best known for providing some of the best anadromous fishing opportunities in California. In addition to river recreation, popular activities in the Six Rivers include camping, hiking, backpacking, picnicking, and motorized vehicle use.

The Six Rivers shares management of four wilderness areas—the Siskiyou, Trinity Alps, Yolla-Bolly, and Marble Mountain—with nearby national forests, and has sole responsibility for managing the North Fork Wilderness. The federally designated Smith River National Recreation Area consists of 307,973 acres of the northernmost section of the forest. Commercial uses in the forest include timber harvesting and grazing, and, to a lesser extent, mineral extraction and harvest of special forest products, such as Christmas trees and mushrooms. Additionally, the Six Rivers contains more than 1,260 known historical or archaeological sites.

## Smith River Complex Incident: Resource Advisor Message

**IMPORTANT: Yellow/Black Striped flagging** indicates resource **AVOIDANCE** areas.

### Cultural and Heritage Resources:

The area you are working in is rich in cultural and heritage resources which may be encountered while fighting fire. When potential cultural or heritage resource are encountered, that they are not disturbed. There is a potential that undocumented cultural resources will be encountered while fighting fire. It is important when a potential cultural resource is encountered that they are not disturbed in any manner.



GPS its location and take a photo, but do not remove or collect anything. Findings of cultural resources should not be reported over the radio. Work with your division to notify a resource advisor for recommendations on how to proceed.

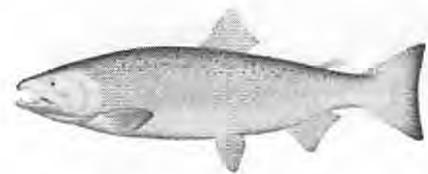
### Invasive Plant Species – PLEASE USE WEED WASH



The area in and around the Smith River Complex, are home to many sensitive species. Infestations of highly invasive plant species are one of the largest threats to sensitive species populations here. Spread via vehicles and foot traffic as well as re-activation via fire is of high concern. To help protect these sensitive places, do not park in and try to avoid areas flagged areas. **Make sure to visit the WEED WASH at end of shift AND at demob.** Located on Hwy 199 on the right just past the Ranger Station.

### Fish Screens: Coho Salmon Critical Habitat

Most rivers and streams in this area are considered critical habitat for Threatened Coho salmon. Please ensure that Mark 3 and Engine/Tender suction hoses have the appropriate screen attached. Talk to a READ if you think you need a screen!



### Port Orford Cedar root disease

Some local drainages are infected with a root disease that spreads via mud and water. To prevent spreading this disease to uninfected areas, all water tenders and engines will apply bleach to their tanks in a 1:1000 ratio (using bleach with 6.0 % Sodium hypochlorite). Talk to a READ if you need some bleach!

# **TRAINING SPECIALIST MESSAGE**

**A Training Specialist is on the incident.  
All federal, state, and local government agency  
trainees working on position task books will need  
to register with the Incident Training Specialist in  
order to receive proper credit for your  
assignment.**

**The TNSP desk is in ICP trailer row.  
PLEASE CALL or TEXT if you have any questions.**

*John LeBlanc*  
*Training Specialist*

john\_leblanc@firenet.gov  
209.471.7229



Sign in training

All DEMOBing resources, **BEFORE** leaving camp, must obtain signatures for the base camp sections below. Start with Ground Support unit at your assigned time, not before. After base camp signatures have been obtained, return to ICP to close out times and return this sheet to DEMOB.

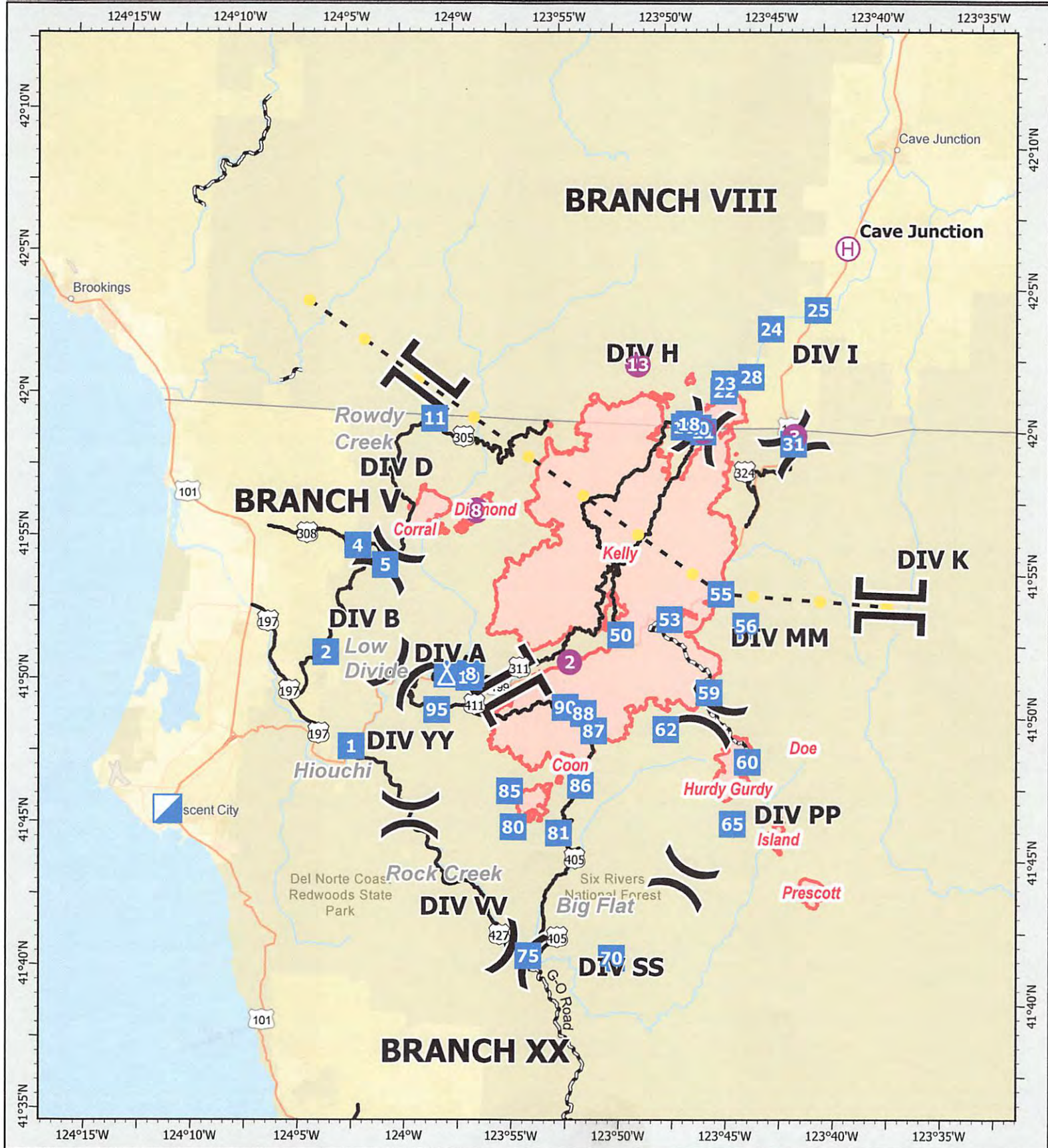
## DEMOBILIZATION CHECKOUT

ICS-221

1. INCIDENT NAME/NUMBER	US-CA-SRF-000968	2. DATE/TIME	3. DEMOB NO.
<b>SMITH RIVER COMPLEX</b>			
4. PERSONNEL RELEASED			
<p><b>BASE CAMP CHECKOUT</b></p> <p><input checked="" type="checkbox"/> SUPPLY UNIT _____</p> <p><input checked="" type="checkbox"/> GROUND SUPPORT UNIT _____</p> <p><input checked="" type="checkbox"/> COMMUNICATIONS UNIT _____</p> <p><input checked="" type="checkbox"/> WEED WASH _____</p> <p><b>ICP CHECKOUT</b></p> <p><input checked="" type="checkbox"/> DEMOB UNIT _____</p> <p><input checked="" type="checkbox"/> TIME UNIT _____</p>			
12. REMARKS			
221 ICS 1/83			

# TRANSPORTATION

8/27/2023

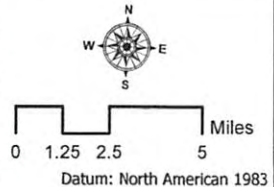


## SMITH RIVER COMPLEX - SOUTH

CA-SRF-000968  
August 27, 2023

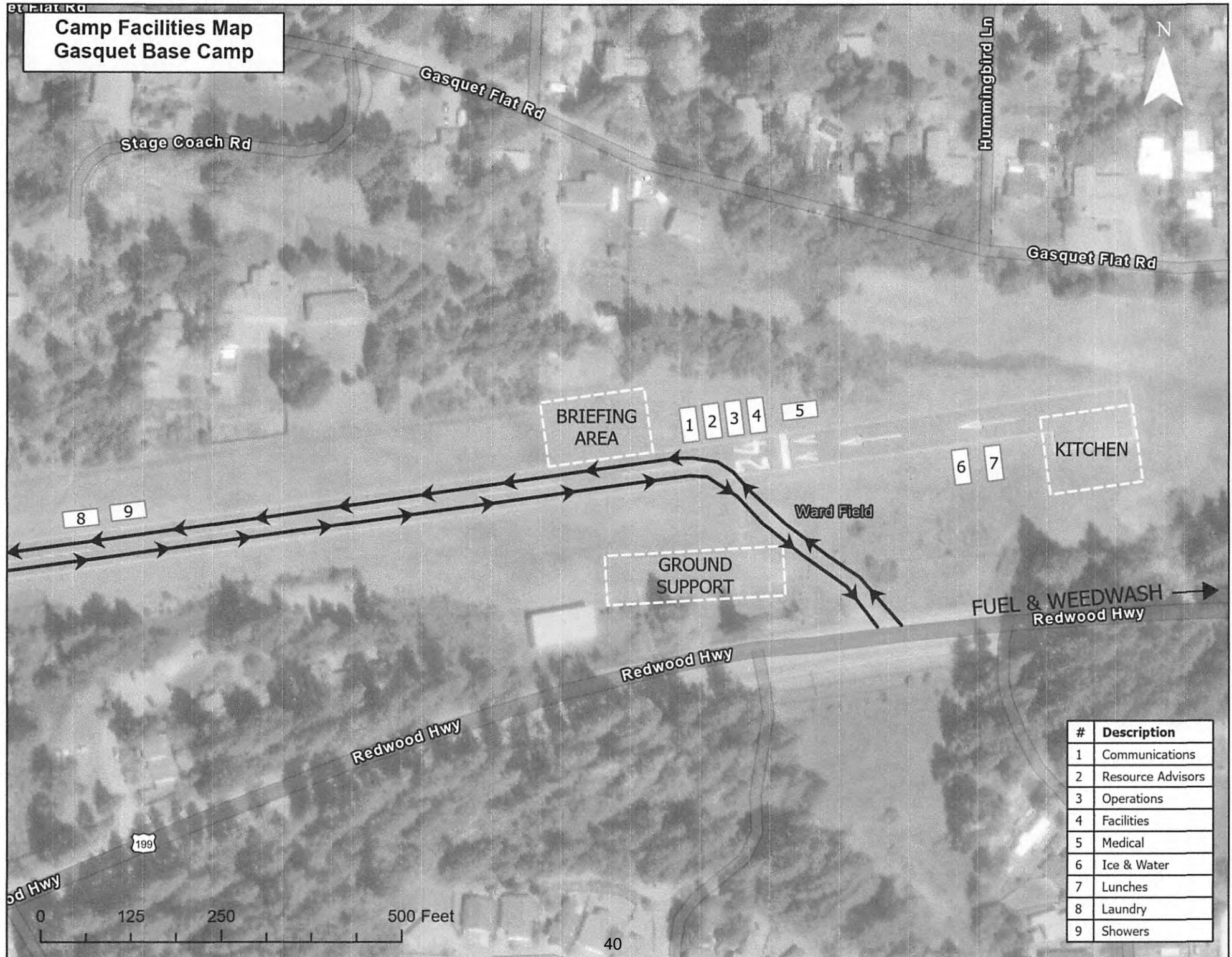
- Wildfire Daily Fire Perimeter
- Highlighted Feature
- County Road
- Paved or Gravel
- Paved
- Helispot
- Helibase
- Division Break
- Branch Break
- Incident Command Post
- Drop Point
- Camp

39





**Camp Facilities Map  
Gasquet Base Camp**



#	Description
1	Communications
2	Resource Advisors
3	Operations
4	Facilities
5	Medical
6	Ice & Water
7	Lunches
8	Laundry
9	Showers

0 125 250 500 Feet







**MEDICAL PLAN (ICS 206)**

<b>1. Incident Name:</b>  SMITH RIVER COMPLEX - SOUTH	<b>2. Operational Period:</b>	Date From: 8/27/23	Date To: 8/28/23
		Time From: 0700	Time To: 0700

**3. INCIDENT MEDICAL AID STATIONS**

MEDICAL AID STATIONS	LOCATION	R.N. & EMT	
		YES	NO
Frontline Medical Support	Base Camp - Ward Field, Gasquet	X	

**4.a. AIR AMBULANCES**

NAME	LOCATION	CONTACT	PARAMEDICS	
			YES	NO
Air Ambulance / Type 3	Medford, OR	South Smith Communications	X	
CHP (Daytime only Hoist) / Type 3	Redding, CA	South Smith Communications	X	
Coast Guard (Day/Night Hoist) / Type 3	Humbolt Bay, CA	South Smith Communications		X
Reach Air Medical Type 3	Brookings, OR	South Smith Communications	X	
Cal Fire (Hoist)	Kneeland, CA	South Smith Communications	X	

**4.b. GROUND AMBULANCES & REMS**

NAME	LOCATION	PARAMEDICS	
		YES	NO
Ambulance 1 (Mountain Medics)	DP 1	X	
Ambulance 2 (Mountain Medics)	DP 56	X	
Ambulance 3 (Emergency Response Logistics)	Gasquet Night	X	
Ambulance 4 (LMR F.D.)	DP 5	X	
REMS 1 (North County F.D.)	Branch XX		X
REMS 2 (Remote Access Medical)	Branch V	X	
REMS 3 (Blackwoods Emergency Resources)	Branch V	X	
REMS 4 (Blackwoods Emergency Resources)	Branch XX	X	

**5. HOSPITALS GPS DATUM - WGS 84**

NAME	ADDRESS	TRAVEL TIME		PHONE LAT, LONG	HELIPAD		BURN CENTER	
		AIR	GRND		YES	NO	YES	NO
Sutter Coast Hospital (Level 4 Trauma Center)	800 E. Washington Blvd. Crescent City CA.		25 min.	707-464-8888 Lat: 41 46.454 Long: 124 11.537		X		X
Rogue Regional Medical (Level 2 Trauma Center)	2825 E Barnett Rd. Medford, OR	35 min.	4.5 hrs	541-789-7178 Lat: 42 19.10 Long: 122 49.50	X OR99			X
Mercy Medical Center (Level 2 Trauma Center)	2175 Rosaline Ave. Redding, CA	55 min.	4.5 hrs.	530-225-6000 Lat: 40 34.14 Long: 122 23.97	X 7CA3			X
UC Davis Medical Center (Level 1 Trauma & Burn)	2315 Stockton Blvd. Sacramento, CA	1.5 hr.	7 hrs.	916-734-3636 Lat: 38 33.20 Long: 121 27.28	X 3CLO		X	

**6. MEDICAL EMERGENCY PROCEDURES**

<p align="center"><b><u>LINE "MEDICAL EMERGENCY" PLAN:</u></b></p> <p><b>Crew Supervisor</b> to contact Division Supervisor/Operations with:</p> <ul style="list-style-type: none"> <li>• Patient Complaint, Condition and Location via Tactical or Command Frequency. <b>Priority 1/Red &amp; 2/Yellow</b> patients</li> <li>• <u>Triggers</u> Incident within Incident (IWI)</li> </ul> <p><b>Division Supervisor*/POC</b> contacts South Smith Communications:</p> <ul style="list-style-type: none"> <li>• Division Supervisor or *POC will run "<b>Medical-Emergency</b>" on Command Frequency.</li> <li>• <b>Division Supervisor</b> or *POC to use "<b>Medical Plan (ICS 206 WF)</b>" worksheet in the IAP or IRPG.</li> <li>• Communications contacts Medical Unit Leader on the Command Frequency or cell phone.</li> </ul> <p><b>*POC (Point of Contact)</b></p>	<p align="center"><b><u>LINE "NON-EMERGENCY INCIDENT" PLAN:</u></b></p> <p><b>Crew Supervisor</b> to contact Division Supervisor with:</p> <ul style="list-style-type: none"> <li>• Patient Complaint, Condition and Location via Tactical or Command Frequency. <b>Priority 3/Green</b> Patients</li> <li>• <u>Does not</u> trigger Incident within Incident (IWI). Contact Communications via cell Phone (760) 220-2863 or Command if no cell service.</li> </ul> <p><b>Division Supervisor/POC</b> Contact Smith River Communications</p> <ul style="list-style-type: none"> <li>• Division Supervisor or *POC will run "<b>Non-Emergency Incident</b>" via Cell phone or Command if no Cell service.</li> <li>• Division Supervisor or *POC to use "<b>Medical Incident Report</b>" worksheet on back of this page or in IRPG.</li> <li>• Communications contacts Medical Unit Leader on the Command Frequency or Cell Phone (805) 570-9061</li> </ul> <p><b><u>IN-CAMP – 24 HOUR MEDICAL</u></b></p> <p>Contact Smith River Communications with: Patient Complaint, Condition, and Location via phone (760) 220-2863, Command Frequency, or 911.</p>
--	---

ICS 206	<b>7. PREPARED BY: (Medical Unit Leader-T)</b>	<b>8. REVIEWED BY: (Safety Officer)</b>
	J. Emerson/M. Lencioni/M. Caffey(t) <i>Matthew Caffey</i>	Rick Bertram <i>Rick Bertram</i>

**Medical Incident Report**

FOR A **NON-EMERGENCY INCIDENT**: WORK THROUGH CHAIN OF COMMAND TO REPORT AND TRANSPORT INJURED PERSONNEL AS NECESSARY.

FOR A **MEDICAL EMERGENCY**: IDENTIFY ON SCENE INCIDENT COMMANDER BY NAME AND POSITION AND ANNOUNCE **"MEDICAL EMERGENCY"** TO INITIATE RESPONSE FROM COMMUNICATIONS

**Use the following items to communicate situation to communications/dispatch.**

**1. CONTACT COMMUNICATIONS / DISPATCH** (Verify correct frequency prior to starting report)

*Ex: "Communications, Div. Alpha. Stand-by for Emergency Traffic."*

**2. INCIDENT STATUS:** Provide incident summary (including number of patients) and command structure.

*Ex: "Communications, I have a Red priority patient, unconscious, struck by a falling tree.*

*Requesting air ambulance to Forest Road 1 at (Lat./Long.)*

*"This will be the Trout Meadow Medical Incident, IC is TFLD Jones. EMT Smith is providing medical care."*

Severity of Emergency AND Transport Priority (priority 1, 2, 3)	<input type="checkbox"/> <b>RED / PRIORITY 1 Life or limb threatening injury or illness. Evacuation need is IMMEDIATE</b> <i>Ex: Unconscious, difficulty breathing, bleeding severely, 2° – 3° burns more than 4 palm sizes, heat stroke, disoriented.</i>	
	<input type="checkbox"/> <b>YELLOW / PRIORITY 2 Serious Injury or illness. Evacuation may be DELAYED if necessary.</b> <i>Ex: Significant trauma, unable to walk, 2° – 3° burns not more than 1-3 palm sizes.</i>	
	<input type="checkbox"/> <b>GREEN / PRIORITY 3 Minor Injury or illness. Non-Emergency transport</b> <i>Ex: Sprains, strains, minor heat-related illness.</i>	
Nature of Injury or Illness & Mechanism of Injury		Brief Summary of Injury or Illness ( <i>Ex: Unconscious, Struck by Falling Tree</i> )
Transport Request		Air Ambulance / Short Haul/Hoist Ground Ambulance / Other
Patient Location		Descriptive Location & Lat. / Long. (WGS84)
Incident Name		Geographic Name + "Medical" ( <i>Ex: Trout Meadow Medical</i> )
On-Scene Incident Commander		Name of on-scene IC of Incident within an Incident ( <i>Ex: TFLD Jones</i> )
Crew Patient Care		Name of Care Provider ( <i>Ex: EMT Smith</i> )

**3. INITIAL PATIENT ASSESSMENT:** Complete this section for each patient as applicable (start with the most severe patient)

Agency Affiliation: (NO PATIENT NAMES)                      Federal                      Contractor                      Local Government

Patient Assessment:                      Age:                      Weight:                      Chief Complaint:

(If pertinent to Injury)                      Skin Signs: (color/moisture/temp)                      Level of Consciousness:                      BP:                      HR:                      Respirations:

Treatment:

**4. TRANSPORT PLAN:**

Evacuation Location (*drop point, intersection, helispot, Lat. / Long, hazards*)                      Patient's ETA to Location:

**5. ADDITIONAL RESOURCES / EQUIPMENT NEEDS:**

*Paramedic / EMT - Crews - Immobilization Devices - AED - Oxygen - Trauma Bag - IV/Fluid(s) - Splints - Rope rescue - Wheeled litter - HAZMAT - Extrication*

**6. COMMUNICATIONS: Identify State Air/Ground EMS Frequencies and Hospital Contacts as applicable**

Function	Channel Name/Number	Receive (RX)	Tone/NAC *	Transmit (TX)	Tone/NAC *
COMMAND					
AIR-TO-GRND					

**7. CONTINGENCY: Considerations:** If primary options fail, what actions can be implemented in conjunction with primary evacuation method?  
*Be thinking ahead.*

**8. ADDITIONAL INFORMATION:** Updates/Changes, etc.

**REMEMBER:** Confirm ETA's of resources ordered. Act according to your level of training. Be Alert - Keep Calm - Think Clearly - Act Decisively

\*\*\* Follow up with MEDL upon return to ICP \*\*\*