

FINANCE MESSAGE

Finance Email: 2023.smithrivercomplex.finance@firenet.gov

Finance Phones: *Contractors: 971-245-0259 Agency Personnel: 971-762-8750*

Please email your time to the Finance email address daily *with the word "NORTH" in the subject line.*

See Finance if you have not closed out your time for Large Fire Support

Finance documents required upon check in are:

Required Documents

Overhead, Agency Crews & Cooperators	Contract Resources
Finance docs needed: Resource Order, Manifest, Cooperative Agreement, Casual Hire Form w/ECI# (as applicable)	Finance docs needed: Resource Order, Manifest, Full Contract/Agreement, Certifications (<i>if required</i>) Pre-Inspection
Daily: CTRs, Shift Tickets	Daily: CTRs, Shift Tickets, receipts (claims, etc.) NOTE: Document travel times and odometer readings.
Demob: Signed OF-288; Signed OF-286	Demob: Contractor Evaluations, Shift Tickets, receipt(s) for Addition/Deductions, Post-Inspection, Signed OF-286
Additional Incident Information: <u>Incident Name:</u> Smith River Complex North <u>Incident Number:</u> CA-SRF-000968 <u>Financial codes:</u> DOI – QJ6L Washington DNR 221-ICM USDA – P5QJ6L (0510)	Please call finance regarding issues with your time: E-50013 O-50013 E-50079 E-50051 O-50052 E-50059 E-50042 O-50042 E-50050 E-50045 O-50025 E-50046 E-50033 O-50024 E-50039 E-50031 E-50007

DEMOB

Fliers complete the "Air Travel Request" QR code below, 72 hours prior to flight date.

- Return supplies to the Cache
- Return radios, antennas, etc., to Communications
- Contact Finance about closing out your paperwork
- If you are a Trainee contact the Training Specialist, stop by or call 360-701-3154

Once the above items have been completed, SCAN the DEMOB QR code and complete the questions.



Air Travel



DEMOB

Call Demob at 971-713-0265 to confirm the information has been received.

CHECK-IN

Please complete the virtual check-in process via the link below. If you have any questions, please email check-in at 2023.smithrivercomplex.checkin@firenet.gov. Please include NORTH and your request number in the subject line when emailing check-in.

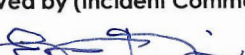
You are not checked in until you provide the following:

- Red Cards
- Roster/Manifest



Process for crew/operator personnel swaps:

Contact Check-In at 208-891-6877 or stop by Lake Selmac ICP and provide the necessary information on personnel changes 48 hours prior to swapping crew members/operators.

INCIDENT OBJECTIVES	1. Incident Name Smith River Complex North	2. Date August 27, 2023	3. Time 2000
4. Operational Period: 08/28-29/2023 0700-0700			
<p>5. General Objectives:</p> <p>Implement a FULL suppression strategy for the Smith River Complex:</p> <ul style="list-style-type: none"> • Provide for firefighter and public safety through hazard identification and application of a shared risk management process. • Coordinate public information to provide timely updates to agency partners, cooperators, and the public. • Coordinate suppression activities with READs to minimize impacts on natural and cultural resources. • Effectively manage and track costs for all incidents identified within the Smith River Complex. • Coordinate with agency leadership to ensure effective and efficient management of firefighting resources. <p>Smith River Complex North (NWIMT-13):</p> <ul style="list-style-type: none"> • Protect and minimize the impact to the communities within the Illinois Valley and identify future areas of control to limit spread of the fire west towards Brookings and north to Elk creek and Dwight creek. Focus suppression efforts to keep fire west of 4402 road, south of Gilligan Butte and west of Highway 199. • Utilize a structure protection group to suppress fire in the event fire reaches structure protection blocks. Work with local fire district to build informal structure protection plan. • Work with Josephine and Curry Counties in Oregon, as well as Del Norte County in California for evacuation levels and recommendations. • Develop a PACE model that aligns fire suppression efforts with CA-15 to protect communities, infrastructure, commerce, and primary travel routes. <p>Smith River Complex South (CA-15):</p> <ul style="list-style-type: none"> • Minimize impact to the communities and outlying areas near Gasquet, Pioneer, Lower Jones Creek, Washington Flat, Siskiyou Fork, French Hill, Coon Creek, Rock Creek, and Crescent City, as well as water resources, transportation routes, electrical infrastructure, and natural and cultural resources. • East of the Six Rivers National Forest boundary • West of the Six Rivers and Klamath National Forest boundary • North of the 15N01 forest road • South of the Rouge Siskiyou National Forest Boundary 			
<p>5a. Incident Requirements</p> <ul style="list-style-type: none"> • Provide Agency Administrator updates and briefings on incident status as conditions evolve. • Firefighting operations will implement tactics that offer the highest probability of success to protect priority values and minimize unnecessary exposure. Priority values are firefighter and public safety, communities, critical infrastructure, private and tribal timber lands and natural resources. <p>5b. Leaders Intent</p> <ul style="list-style-type: none"> • Safety: Firefighter, public, and aviation safety will be addressed through hazard/exposure risk mitigation processes. • Risk Management: Utilize an aligned risk assessment process which mitigates exposure to firefighters through evaluation of conditions during the duration of the incident. • Communication: Keep Agency Administrators and firefighters informed of strategic actions, accomplishments, and challenges. • Operations: Make informed strategic/tactical decisions suppressing the fire in the right geographic locations with the appropriate resources having the highest probability of success. • Stakeholders: Collaborate with local partners, officials, and landowners to provide situational updates pertinent to the fire. • Logistics: Provide support ensuring food, water, and shelter for incident responders. • Human Resources: Ensure that all incident personnel are treated with dignity and respect, while having zero tolerance for harassment, alcohol, or illegal drug use. • Public Information: Provide timely and accurate information through media outlets, trap lines, briefings, community meetings, and social platforms. • Finance: Monitor and communicate incident cost associated with meeting incident objectives. • Planning: Provide incident documentation, resource tracking, and accurate data management. 			
6. Weather Forecast & General Safety Message for Period – See Attached			
7. Attachments (mark if attached)			
<input checked="" type="checkbox"/> Organization List - ICS 203	<input checked="" type="checkbox"/> Weather Forecast	<input checked="" type="checkbox"/> Safety Message	
<input checked="" type="checkbox"/> Div. Assignment Lists - ICS204	<input checked="" type="checkbox"/> Fire Behavior Forecast	<input type="checkbox"/> Medical Emergency Com Plan	
<input checked="" type="checkbox"/> Communications Plan - ICS 205	<input checked="" type="checkbox"/> Incident Map	<input type="checkbox"/>	
<input checked="" type="checkbox"/> Medical Plan - ICS 206	<input checked="" type="checkbox"/> Air Operations - ICS 220	<input type="checkbox"/>	
9. Prepared by Aileen Nichols	9. Approved by (Incident Commander) Eric Riener 		

ORGANIZATION ASSIGNMENT LIST		
1. Incident Name Smith River Complex North		
2. Date August 27, 2023	3. Time 1830	
4. Operational Period August 28-29, 2023 0700-0700		
Position	Name	
NWIMT 13 LWD 9/02/2023		
5. Incident Commander and Staff		
Incident Commander	Eric Riener	
Deputy Incident Commander	Brian Gales	
Liaison Officer	Larry Nickey	
Strategic Operations Chief	Robert Burnside	
Safety Officer	Ray Hershey	
Information Officer	Randall Rishe	
Information Officer Deputy	Eric Waters	
Human Resource Specialist	Margaret Dietrich	
6. Agency/Organization Representative(s):		
USFS RSF Agency Administrator	Al Watson	
USFS RSF River Agency Representative	Scott Blower	
USFS RSF Fire Management Liaison	Mike McCann	
BLM Agency Administrator	Steven Lydick	
BLM Agency Administrator - t	Heidi Lowery	
BLM Agency Representative	Chris Foster	
Oregon Department of Forestry	Brandon Ferguson	
Lead READ	Rachel Showalter	
7. Planning Section		
Plans Chief	Aileen Nichols	
Resources Unit	Meredith Butcher	
Resources Unit - t	Carolyn Zanofto	
Status Check-In	Sandy Hoffman	
Status Check-In/Documentation Unit - t	Robert Wandel	
Demob Unit	Laura Backlund	
Situation Unit - t	Laurie Bergvall	
Fire Behavior Analyst	Dean Warner	
Fire Behavior Analyst/Long Term Fire Analyst	Ryan Jones	
Incident Meteorologist	Jonathan Chriest	
Air Resource Advisor	Tod Johnson	
Air Resource Advisor - t	Ghazal Majidi-Weese	
GIS Specialist	Craig Higbee	
GIS Specialist - t	David Hines	
Computer Specialist	Dave Johnson	
Computer Specialist	Jeff Hixon	
Computer Specialist - t	Zak Thomas	
Strategic Operational Planner - t	Scott Brewer	
8. Logistics Section		
Logistics Chief	Bryan Swanberg	
Logistics Chief - t	Cindy Preston	
Deputy Logistics Chief	Jim Hammer	
Deputy Logistics Chief	Peter Fitzmaurice	
Supply Unit Leader - t	Jon Byerly	
Ordering Manager	Rob Jefer	
Ordering Manager - t	Robert Yarnall	
Communications Unit Ldr - t	Bruce Hanna	
Incident Comm Mgr	Alandra Swords	
Com Tech	Kevin Alexander	

Food Unit Leader	Pat Young	
Facilities Unit Leader	Keith Yonaka	
Facilities Unit Leader	Shannon Anderson	
Medical Unit Leader	Ben Meacham	
Medical Unit Leader	James Brown	
Ground Support Unit	Dave Hesburn	
Ground Support Unit	Billie Hunter	
Receiving/Distribution Mgr - t	Aaron Ritter	
Base Camp Manager - t	Justin Schmal	
9. Operations Section		
Operations (Field)	John Spencer Jesse Stone - t	
Operations (Planning/ Strategic)	Shawn Jaca	
Operations (Planning)	Tim Crawley-Murphey - t	
Operations (Night)	Larry Pingel	
a. North		
Branch Director		
Division Supervisor	H	Anna Graves Jothan McGaughey - t
Division Supervisor	I	Whitney Machado Silas Baffa - t
Division Supervisor	K	Derrick Youngerman Marc Johnson - t
Group Supervisor	Structure West	Robert Boles Shannon Clark - t
Group Supervisor	Structure East	Miranda Stuart Billy Turner - t
Group Supervisor	Contingency West	Derreck Johnson
Group Supervisor	Contingency East	Randy Anderson
Group Supervisor	Night North	Josh Morris - t
Manager	Staging	Rick Long
b.		
Branch Director		
Division Supervisor		
Division Supervisor		
c. Air Operations Branch		
Air Operations	Steve Markason	
Air Support Group - t	Bert Smith	
Helibase Manager (Cave)	George Leite	
10. Finance Section		
Finance Chief	Veronika Klukas	
Finance Chief - t	Lori Price	
Cost Unit	Paula James	
Time Unit	Angie Chapman	
Time Unit - t	Heather Fitzpatrick	
Proc Unit Leader	Laurette Gaylord	
Proc Unit Leader - t	Eric Soto	
COMPS/CLAIMS	Hanna Jefer	
Incident Cont. Project Insp	Stan Zazado	
PTRC/In-Box Manager - t	Ryker Aldred	
PREPARED BY: Meredith Butcher		



Fire Weather Forecast



FORECAST NO: 6
PREDICTION FOR: Monday-Tuesday
DATE: August 28, 2023
FORECAST ISSUED: 1800 August 27, 2023

FIRE: Smith River Complex North
UNIT: CA-SRF-968
IMET: Jonathan Chriest (425-765-3749)
SIGNED: *Jonathan Chriest*

WEATHER DISCUSSION: Valley elevations = 1400 ft (Illinois Valley), Ridgetop elevations = 3300 ft (Monkey Ridge)
 An upper level trough that has been very persistent off of the coast of northern California will begin to move inland this evening. This will bring slightly cooler temperatures and slightly higher relative humidities. It will also turn winds more westerly, which is less favorable for channeling through the highway 199 corridor. West winds over ridgetops will gust to 23 mph in the afternoon. Expect visibility to continue to be less than one half mile. Overnight into Tuesday, west winds will persist over ridgetops and through valleys. On Tuesday, the trough will continue to move east through the area, bringing wind gusts to 22 mph over ridgetops from the NW, along with cooler temperatures.

TODAY:

WEATHER: Heavy smoke, otherwise mostly clear of clouds.

MAX TEMP: Valleys: 78-84°F (2-3°F ↓)
 Ridgetops: 75-80°F (1-2°F ↓)

MIN RH: Valleys: 35-43% (4-6% ↑)
 Ridgetops: 46-54% (5-7% ↑)

CHC WTG RAIN: 0% **LAL:** 1

SFC VIS: 0.25-0.5 miles.

WINDS: Valleys: Morning: downslope 2-4 mph, after 1200: WSW 7-11 mph gusts to 20 mph.
(20 feet) Ridgetops: Morning: NW 2-3 mph, after 1200: W 9-13 mph gusts to 23 mph.

MIXING HEIGHT: Rising to 5,000 ft by 1300.

TRANSPORT WIND: West 8-10 mph.

TONIGHT:

WEATHER: Mostly clear. Heavy smoke.

MIN TEMP: Valleys: 45-49° (2-3°F ↓)
 Ridgetops: 49-52° (3-4°F ↓)

MAX RH: Valleys: 90-100% (Little Change)
 Ridgetops: 65-75% (6-15% ↑)

CHC WTG RAIN: 0% **LAL:** 1

SFC VIS: 0.25-0.5 mile.

WINDS: Valleys: W 4-6 mph.
(20 FEET) Ridgetops: W 7-11 mph gusts to 17 mph before 2200, then W 4-6 mph.

MIXING HEIGHT: Dropping to 1,000 ft by 2200.

TRANSPORT WIND: Northeast 5-6 mph.

TUESDAY:

WEATHER: Mostly clear. Slightly improved visibility.

MAX TEMP: Valleys: 74-79°F (4-5°F ↓)
 Ridgetops: 70-75°F (4-6°F ↓)

MIN RH: Valleys: 37-45% (2-3% ↑)
 Ridgetops: 41-47% (5-7% ↓)

CHC WTG RAIN: 0% **LAL:** 1

SFC VIS: 0.5-1 miles.

WINDS: Valleys: Morning: downslope 2-4 mph, after 1200: NW 5-8 mph gusts to 16 mph.
(20 feet) Ridgetops: Morning: NE 2-5 mph, after 1200: NW 9-13 mph gusts to 22 mph.

MIXING HEIGHT: Rising to 7,000 ft by 1300.

TRANSPORT WIND: Northwest 8-12 mph.

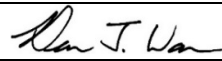
EXTENDED OUTLOOK: Winds turn northerly on Wednesday, with northeast winds over ridgetops peaking overnight Wednesday into Thursday gusting to 25 mph. A chance of precipitation comes into the picture on Thursday and continues into Friday and Saturday with cooler temperatures and higher relative humidities expected.

Nearby Weather Observations



Please send weather observations to Jonathan Chriest
 (IMET) at jonathan.chriest@noaa.gov or 425-765-3749

Fire Behavior Forecast #8

Incident: Smith River Cx North CA-SRF-000968	TYPE OF FIRE: Wildfire
DATE/TIME ISSUED: 8/27/23 1900	OPERATIONAL PERIOD: 8/28-29/23 All Shifts
FBAN: Dean Warner	Signed: 

Weather Summary - See Incident Weather Forecast: Persistent dry and warm weather with afternoon **WEST** winds.

Fuels

Shrub: Shrubs and brush are 1 to 3 feet high with a low to moderate load of grass intermixed with sparse stems of conifer. Manzanita brush and other live fuels are drought stressed from below normal amounts of spring precipitation. These live fuels are cured enough to contribute to fire spread. Given the exposed nature of this fuel type, eye level winds in excess of 6 mph can cause rates of spread to exceed 8 chains per hour. Without wind these fuels will typically exhibit low rates of spread.

Timber litter and shrub: Primary carrier of the fire is understory brush with timber and leaf litter. Expect slow rates of spread under moderate weather conditions. Canopy closure shelters fuels from wind so fire spread will be slow and continuous. Eye level winds in excess of 6 mph will allow fire to reach the canopy, resulting in torching and possible crowning. The drought stressed vegetation and areas of abundant dead fuel loading will promote fuel spread.

OUTPUTS: Expected Fine Dead Fuel Moisture: 6% POI: 60%

Fire Behavior: Active Atmosphere: Stable Max. spot distance: ¼ mile LAL: 1	Fuel/Type Model	Maximum Rate of Spread	Maximum Flame Length
	Shrub	6 ch/hr	2 ft.
	Timber litter shrub	4 ch/hr	1 ft.

Expected Fire Behavior is Based on the Warmest, Driest, Windiest Conditions Forecasted.

General/Potential: Given the warm dry weather conditions and state of fuel dryness, any overnight RH recovery for the fuels will be short lived. Fuels will remain dry but afternoon **WEST** winds will test our efforts. For most areas of the fire, this new west wind will force the fire into a downhill backing mode (see specific divisions for west effects). Do not count on topography to shelter fuels from wind.

Hotel: The west wind will allow the fire to flank and move into the Whiskey creek drainage. Expect a slope reversal in the no name drainage north of Whiskey Creek. Fire spread could impact the wrapped bridge on the 4402 road near the confluence of Whiskey Creek and West Fork Illinois River.

India: The west wind will align well with tertiary drainages on the west slopes of the Gilligan Butte ridge. Watch for unburned pockets to produce torching trees. Spotting across the line will be the primary threat to containment and west winds align well with this potential. All fuels are highly receptive to glowing embers, especially dense fuels with mixed tree species.

Kilo: Fire is not expected to get east of Highway 199, north of the Collier Tunnel. South of the tunnel, west wind will align with Siskiyou and Middle Forks of the Smith River. Abundant fuels are available for fire to progress up drainages and to the east.

Night Operations: West winds will continue through the night but decrease in intensity before midnight. Expect good burning conditions through midnight and likely beyond.

Air Operations

Expect smoke impacts to aviation assets throughout the day.

Safety:

Tactical firing operations, utilized to strengthen a fire line by consuming fuels between the fire edge and control perimeter, require a commitment to stay informed on weather and fire behavior. Listen to hourly weather updates and adjust operations as fire weather and behavior change.

DIVISION ASSIGNMENT LIST			1. Branch		2. Division H	
3. Incident Name Smith River Complex North			4. Operational Period Date: 08/28/2023 Time: 0600-2200			
5. Operations Personnel						
Operations Chief		John Spencer Jesse Stone - t		Division Supervisor		Anna Graves Jothan McGaughey - t
Safety Officer		Ray Hershey		Air Attack		
6. Resources Assigned this Period						
Strike Team/Task Force/Resource Designator		Leader	# Persons	LWD	Drop Off PT./Time	Pick Up PT./Time
1	O-50146 TFLD	Jesse Holguin	1	9/10	Lake Selmac ICP	Lake Selmac ICP
2	O-50147 TFLD - t	Marcos Munoz	1	9/10	Lake Selmac ICP	Lake Selmac ICP
3	O-50121 HEQB	Andy Bumgarner	1	9/8	Lake Selmac ICP	Lake Selmac ICP
4						
5						
6	C-50033 CRW2 TJ Forestry	Jasmine Orozco	20	9/8	Lake Selmac ICP	Lake Selmac ICP
7	C-50034 CRW2 A&G Forestry	Alberto Garcia	20	9/8	Lake Selmac ICP	Lake Selmac ICP
8						
9	**E-50061 ENG6 3Bs	Jonathan Toebben	3	8/31	Lake Selmac ICP	Lake Selmac ICP
10	**E-50062 ENG6 Lone Pine	Katy Adams	3	8/31	Lake Selmac ICP	Lake Selmac ICP
11						
12	E-50040 CHP2 Prometheus	Steven Carrick	3	9/5	Lake Selmac ICP	Lake Selmac ICP
13	E-50033 MBM1 Cate Land Inc.	E.C. Cates	2	9/7	Lake Selmac ICP	Lake Selmac ICP
14						
15						
16	Pacific Power Task Force	Anna Arritola	5		No meals	
17						
18						
19	O-68 Medic 2	Erica Jackson	1		Lake Selmac ICP	Lake Selmac ICP
20	O-50032 EMT1	Lisa Johnson	1		Lake Selmac ICP	Lake Selmac ICP
21						
22						
		Meal count	61			
7. Control Operations: Task: Continue prep on the 4402 Rd. Purpose: Minimize impacts to communities and infrastructure to the north and east and keep fire west of the 4402 Rd. End state: Impacts have been minimized to communities and infrastructure to the north and east.						
8. Special Instructions: **Indicates IA Resources. REAFs Bucher and Mero will contact DIVS upon entering and exiting their respective divisions.						
9. Division/Group Communication Summary						
See Communications Plan						
Prepared by (Resource Unit Ldr) <i>Meredith Butcher/Carolyn Zanotto</i>		Approved by (Planning Sect. Ch.) <i>Aileen Nichols</i>		Date 08/27/2023	Time 2000	

DIVISION ASSIGNMENT LIST				1. Branch		2. Division I (page 1)	
3. Incident Name Smith River Complex North				4. Operational Period Date: 08/28/2023 Time: 0600-2200			
5. Operations Personnel							
Operations Chief		John Spencer Jesse Stone - t		Division Supervisor		Whitney Machado Silas Baffa - t	
Safety Officer		Ray Hershey		Air Attack			
6. Resources Assigned this Period							
Strike Team/Task Force/Resource Designator		Leader	# Persons	LWD	Drop Off PT./Time	Pick Up PT./Time	
1	O-50015 TFLD	Jyota Smith-Howard	1	9/3	Lake Selmac ICP	Lake Selmac ICP	
2	O-390 TFLD	Ryan Lewis	1	9/8	Lake Selmac ICP	Lake Selmac ICP	
3	O-50014 HEQB	Clint Foster	1	9/3	Lake Selmac ICP	Lake Selmac ICP	
4	O-50152 STEQ	Mike Borowski	1	9/8	Lake Selmac ICP	Lake Selmac ICP	
5	O-50045 FMOD Toms Timber LLC	Tyler Pacheco	2	9/2	Lake Selmac ICP	Lake Selmac ICP	
6	O-50044 FMOD Cut Rite Inc	Dave Hillsman	2	9/4	Lake Selmac ICP	Lake Selmac ICP	
7							
8							
9	C-50016 CRW1 Palomar IHC	Jose Ortega	23	8/29	Lake Selmac ICP	Lake Selmac ICP	
10	C-50037 CRW1 Stanislaus IHC	Brandon Hull	23	9/8	Lake Selmac ICP	Lake Selmac ICP	
11	C-50017 CR2I Redmond IHC	Dave Varon	22	8/31	Lake Selmac ICP	Lake Selmac ICP	
12	C-50036 CR2I Kern Valley IHC	Kyle Clendenen	19	9/9	Lake Selmac ICP	Lake Selmac ICP	
13							
14	C-50022 CRW2 Tom Fery Farm	R. Hoffman-Wenting	20	9/7	Lake Selmac ICP	Lake Selmac ICP	
15	C-50004 CRW2 Pacific Coast	Javier Ramos	20	9/4	Lake Selmac ICP	Lake Selmac ICP	
16	C-50032 CRW2 North Pacific	Jose Garibay	20	9/8	Lake Selmac ICP	Lake Selmac ICP	
17							
18	E-455 ENG4 BIA Blue Lake	Rocky Colegrove	7	9/10	Lake Selmac ICP	Lake Selmac ICP	
19	**E-50065 ENG6 GE Forestry 1	Edgar Aguilar	3	8/31	Lake Selmac ICP	Lake Selmac ICP	
20	**E-50057 ENG6 Fuego 6	Chase Workman	3	9/1	Lake Selmac ICP	Lake Selmac ICP	
21	E-50058 ENG6 Lomakatsi 65	Antonio Lopez	3	8/31	Lake Selmac ICP	Lake Selmac ICP	
22	E-50060 ENG6 Sundance 5	Emilio Garcia	3	8/31	Lake Selmac ICP	Lake Selmac ICP	
		Meal count	174				
7. Control Operations: Task: Establish fireline from 4402 to Hwy 199. Purpose: Keep fire south of Lone Mountain and west of Gilligan Butte and Dwight Creek. End state: Impacts have been minimized to communities and infrastructure.							
8. Special Instructions: *REMS 1 staged at DP31. **Indicates IA Resources. REAFs Porter, Hughes, Spindel, Saunders and Galuchie will contact DIVS upon entering and exiting their respective divisions.							
9. Division/Group Communication Summary							
See Communications Plan							
Prepared by (Resource Unit Ldr) <i>Meredith Butcher/Carolyn Zanotto</i>			Approved by (Planning Sect. Ch.) <i>Aileen Nichols</i>			Date 08/27/2023	Time 2000

DIVISION ASSIGNMENT LIST			1. Branch		2. Group I (page 2)	
3. Incident Name Smith River Complex North			4. Operational Period Date: 08/28/2023 Time: 0600-2200			
5. Operations Personnel						
Operations Chief		John Spencer Jesse Stone - t		Group Supervisor		Whitney Machado Silas Baffa - t
Safety Officer		Ray Hershey		Air Attack		
6. Resources Assigned this Period						
Strike Team/Task Force/Resource Designator	Leader	# Persons	LWD	Drop Off PT./Time	Pick Up PT./Time	
1 **E-39 WTS2 Sugden 1	Tom Sugden	1	8/31	Lake Selmac ICP	Lake Selmac ICP	
2 E-50056 WTS2 Autobrot 1	Dakota Williams	2	8/31	Lake Selmac ICP	Lake Selmac ICP	
3 E-50005 WTS2 Rogue Basin Fire	Matthew Jordan	1	9/5	Lake Selmac ICP	Lake Selmac ICP	
4						
5 E-40003 DZR2 Ace Earth Moving	Wade Comyford	2	9/4	Lake Selmac ICP	Lake Selmac ICP	
6 E-50158 DZR3 Inland Timber	Jim Daugherty	2	9/10	Lake Selmac ICP	Lake Selmac ICP	
7						
8 E-50155 SKG1 Hacker Machines	Dennis Artoff	2	9/8	Lake Selmac ICP	Lake Selmac ICP	
9 E-50157 SKG1 Pacific Ridgeline	Justin Hewitt	2	9/8	Lake Selmac ICP	Lake Selmac ICP	
10 E-50156 SKG1 Top Notch	Mike Eagan	2	9/10	Lake Selmac ICP	Lake Selmac ICP	
11						
12 E-50068 FEL1 Inland Timber Co	Shane Dougherty	2	9/6	Lake Selmac ICP	Lake Selmac ICP	
13 E-50069 FEL1 Nash Contracting	Travis Taruscio	2	9/6	Lake Selmac ICP	Lake Selmac ICP	
14						
15 E-40001 MBM2 Morris Forestry LLC	Todd Donahue	2	9/3	Lake Selmac ICP	Lake Selmac ICP	
16 E-50070 LOGL Mark Jones Trucking	William Duffield	2	9/9	Lake Selmac ICP	Lake Selmac ICP	
17						
18 *O-50015 REMS 1	Dan Blaul	4	9/5	Lake Selmac ICP	Lake Selmac ICP	
19 E-50099 Medic 24	Cody Baker	2	9/8	Lake Selmac ICP	Lake Selmac ICP	
20 O-50029 Medic 4	Chad Payletz	1	9/5	Lake Selmac ICP	Lake Selmac ICP	
21 O-50022 EMT 4	Jonathon Cahill	1	9/5	Lake Selmac ICP	Lake Selmac ICP	
22 E-50031 AMBO 1	Mike Wertz	2	9/5	Lake Selmac ICP	Lake Selmac ICP	
	Meal count	32				
7. Control Operations: Task: Establish fireline from 4402 to Hwy 199. Purpose: Keep fire south of Lone Mountain and west of Gilligan Butte and Dwight Creek. End state: Impacts have been minimized to communities and infrastructure.						
8. Special Instructions: *REMS 1 staged at DP31. **Indicates IA Resources. REAFs Porter, Hughes, Spendel, Saunders and Galuchie will contact DIVS upon entering and exiting their respective divisions.						
9. Division/Group Communication Summary See Communications Plan						
Prepared by (Resource Unit Ldr) <i>Meredith Butcher/Carolyn Zanotto</i>		Approved by (Planning Sect. Ch.) <i>Aileen Nichols</i>		Date 08/27/2023	Time 2000	

DIVISION ASSIGNMENT LIST				1. Branch		2. Division K (page 1)	
3. Incident Name Smith River Complex North				4. Operational Period Date: 08/28/2023 Time: 0600-2200			
5. Operations Personnel							
Operations Chief		John Spencer Jesse Stone - t		Division Supervisor		Derrick Youngerman Marc Johnson - t	
Safety Officer		Ray Hershey		Air Attack			
6. Resources Assigned this Period							
Strike Team/Task Force/Resource Designator		Leader	# Persons	LWD	Drop Off PT./Time	Pick Up PT./Time	
1	O-50140 TFLD	Russ Macal	1	9/7	Lake Selmac ICP	Lake Selmac ICP	
2	O-50117 TFLD	Craig Kostrzewski	1	9/8	Lake Selmac ICP	Lake Selmac ICP	
3							
4	O-50095 FMOD The Art of Felling	Jeff Quebral	2	9/7	Lake Selmac ICP	Lake Selmac ICP	
5	O-50076 FMOD Summers Timber	Jarret Wilsey	3	9/6	Lake Selmac ICP	Lake Selmac ICP	
6	O-50096 FMOD C&K Wildland Fire	T.D. Woodruff	2	9/6	Lake Selmac ICP	Lake Selmac ICP	
7	O-50097 FMOD A&C Cutting	Bill Smith	2	9/6	Lake Selmac ICP	Lake Selmac ICP	
8	O-60007 FMOD Top Notch	Steve Hayter	2	9/6	Lake Selmac ICP	Lake Selmac ICP	
9	O-60008 FMOD C&K Wildland Fire	Cameron Hartness	2	9/6	Lake Selmac ICP	Lake Selmac ICP	
10	O-50098 FMOD Top Notch	Kyle Armijo	2	9/7	Lake Selmac ICP	Lake Selmac ICP	
11	O-50075 FMOD Cut Rite Inc	Scott Opheim	2	9/5	Lake Selmac ICP	Lake Selmac ICP	
12							
13	**C-50013 CR2I Pacific Oasis 14A	Jason Maza	20	8/31	Lake Selmac ICP	Lake Selmac ICP	
14	C-50040 CR2I Hat Creek	Jake Fitzgerald	18	9/10	Lake Selmac ICP	Lake Selmac ICP	
15	C-50030 CRW2 Alpine Services	Samir Mohamed	20	9/8	Lake Selmac ICP	Lake Selmac ICP	
16	C-50031 CRW2 Willamette Valley	Luis Cervantes	20	9/8	Lake Selmac ICP	Lake Selmac ICP	
17	C-50035 CRW2 GE Forestry	Raul Chaparro	20	9/8	Lake Selmac ICP	Lake Selmac ICP	
18							
19	E-50094 ENG3 Grayback Forestry	Stephen Jones	3	9/6	Lake Selmac ICP	Lake Selmac ICP	
20	E-50046 ENG3 Grande Ronde Tribes	Brett Daniels	5	9/5	Lake Selmac ICP	Lake Selmac ICP	
21	E-50050 ENG3 TMFR Brush	Scott Fenley	4	9/5	Lake Selmac ICP	Lake Selmac ICP	
22	E-50043 ENG6 B&B	Tim Bailey	3	9/5	Lake Selmac ICP	Lake Selmac ICP	
		Meal count	132				
7. Control Operations: Task: Prep 18N11 from Hwy 199 east to Little Sanger Peak. Hazard tree mitigation from DP55 north on Hwy 199 to Collier tunnel. Purpose: Keep fire east of Hwy 199, south of 18N11 and west 18N02. End state: Impacts have been minimized to critical infrastructure and the communities to the north and east.							
8. Special Instructions: **Indicates IA Resources. REAFs Bucher, Mero, Spendel, Saunders and Galuchie will contact DIVS upon entering and exiting their respective divisions.							
9. Division/Group Communication Summary See Communications Plan							
Prepared by (Resource Unit Ldr) <i>Meredith Butcher/Carolyn Zanotto</i>			Approved by (Planning Sect. Ch.) <i>Aileen Nichols</i>			Date 08/27/2023	Time 2000

DIVISION ASSIGNMENT LIST				1. Branch		2. Division K (page 2)	
3. Incident Name Smith River Complex North				4. Operational Period Date: 08/28/2023 Time: 0600-2200			
5. Operations Personnel							
Operations Chief		John Spencer Jesse Stone - t		Division Supervisor		Derrick Youngerman Marc Johnson - t	
Safety Officer		Ray Hershey		Air Attack			
6. Resources Assigned this Period							
Strike Team/Task Force/Resource Designator	Leader	# Persons	LWD	Drop Off PT./Time	Pick Up PT./Time		
1 E-50037 WTS2 Lavenbarg	John Dalton	1	9/5	Lake Selmac ICP	Lake Selmac ICP		
2 E-50113 WTS2 Hull Transportation	Brett Hull	1	9/6	Lake Selmac ICP	Lake Selmac ICP		
3							
4 E-50038 DZR2 Backwoods Equip	Jimm Hill	2	9/5	Lake Selmac ICP	Lake Selmac ICP		
5 E-50093 DZR2 Lone Pine	Terry Wimmer	2	9/8	Lake Selmac ICP	Lake Selmac ICP		
6 E-50039 DZR2 Barry Brown	Ed Machuse	3	9/5	Lake Selmac ICP	Lake Selmac ICP		
7							
8 E-50083 FEL1 Ponsse Miller Timber	Scott McElhaney	2	9/7	Lake Selmac ICP	Lake Selmac ICP		
9 E-50084 FEL1 Axsus Enterprises	Wade Rainbolt	2	9/9	Lake Selmac ICP	Lake Selmac ICP		
10							
11 E-50034 MBM1 Upper Valley	James Kruckeberg	2	9/6	Lake Selmac ICP	Lake Selmac ICP		
12 E-50138 MBM2 Hacker	Chris Hacker	2	9/8	Lake Selmac ICP	Lake Selmac ICP		
13 E-50139 MBM2 Steve Giles	Don Gilbert	2	9/10	Lake Selmac ICP	Lake Selmac ICP		
14 E-50063 Processor Gibson & Son	Andrew Jager	2	9/8	Lake Selmac ICP	Lake Selmac ICP		
15 E-50066 EXC2 DC Fire LLC	Dan Chancler	2	9/6	Lake Selmac ICP	Lake Selmac ICP		
16							
17 O-50013 Medic 1	Joel Bower	1	9/5	Lake Selmac ICP	Lake Selmac ICP		
18 O-50029 Medic 3	Stephan Smith	1	9/5	Lake Selmac ICP	Lake Selmac ICP		
19 O-50025 EMT 2	James Henson	1	9/5	Lake Selmac ICP	Lake Selmac ICP		
20 O-50123 REMS 2	Brady Graham	2		Lake Selmac ICP	Lake Selmac ICP		
21 AMBO 2	Lanee Forkner	2	9/6	Lake Selmac ICP	Lake Selmac ICP		
22							
	Meal count	30					
7. Control Operations: Task: Prep 18N11 from Hwy 199 east to Little Sanger Peak. Hazard tree mitigation from DP55 north on Hwy 199 to Collier tunnel. Purpose: Keep fire east of Hwy 199, south of 18N11 and west 18N02. End state: Impacts have been minimized to critical infrastructure and the communities to the north and east.							
8. Special Instructions: **Indicates IA Resources. REAFs Bucher, Mero, Spindel, Saunders and Galuchie will contact DIVS upon entering and exiting their respective divisions.							
9. Division/Group Communication Summary See Communications Plan							
Prepared by (Resource Unit Ldr) <i>Meredith Butcher/Carolyn Zanotto</i>		Approved by (Planning Sect. Ch.) <i>Aileen Nichols</i>		Date 08/27/2023		Time 2000	

DIVISION ASSIGNMENT LIST			1. Branch		2. Group Structure West	
3. Incident Name Smith River Complex North			4. Operational Period Date: 08/28/2023 Time: 0600-2200			
5. Operations Personnel						
Operations Chief		John Spencer Jesse Stone - t		Group Supervisor		Robert Boles Shannon Clark - t
Safety Officer		Ray Hershey		Air Attack		
6. Resources Assigned this Period						
Strike Team/Task Force/Resource Designator		Leader	# Persons	LWD	Drop Off PT./Time	Pick Up PT./Time
1	**O-50070 STEN	Rich McIntyre	1	9/5	Lake Selmac ICP	Lake Selmac ICP
2						
3	C-50002 CRW2 Lomakatsi	Braulio Maya	20	9/4	Lake Selmac ICP	Lake Selmac ICP
4	C-50023 CRW2 Firestorm	William Nerbonne	20	9/8	Lake Selmac ICP	Lake Selmac ICP
5						
6	E-50042 ENG3 J3 Contracting	Chris Escudero	3	9/6	Lake Selmac ICP	Lake Selmac ICP
7	E-50103 ENG5 Bullhide Fire	Kevin Johnson	3	9/9	Lake Selmac ICP	Lake Selmac ICP
8	E-50104 ENG6 Timberline	Gray Racicot	3	9/8	Lake Selmac ICP	Lake Selmac ICP
9	E-50105 ENG6 Castle Mountain	Aiden Stewart	3	9/8	Lake Selmac ICP	Lake Selmac ICP
10						
11	E-50036 WTS2 Lavenbarg	Dan Lavenbarg	1	9/5	Lake Selmac ICP	Lake Selmac ICP
12	E-50035 WTS2 Double R&C	Tate Harron	1	9/5	Lake Selmac ICP	Lake Selmac ICP
13						
14	L/L Task Force South					
15	**E-256 ENG5	Branden McCoy	3	9/4	Lake Selmac ICP	Lake Selmac ICP
16	**E-253 ENG6	Rick Sisson	3	9/4	Lake Selmac ICP	Lake Selmac ICP
17	**E-139 ENG6	David Melendez	3	9/4	Lake Selmac ICP	Lake Selmac ICP
18	**E-255 ENG5	Nick Miller	3	9/4	Lake Selmac ICP	Lake Selmac ICP
19	**E-252 ENG5	Brooke Hogrefe	3	9/4	Lake Selmac ICP	Lake Selmac ICP
20						
21	OSFM Task Force 35	Mike Berger	13		Lake Selmac ICP	Lake Selmac ICP
22	OSFM Task Force 36	Zach Leigh	13		Lake Selmac ICP	Lake Selmac ICP
23	O-50023 EMT 3	Trevor Brant	1	9/5	Lake Selmac ICP	Lake Selmac ICP
		Meal count	97			
7. Control Operations: Task: Assess and prep structures from Collier tunnel west of Hwy 199 to town of O'Brien. Purpose: Minimize fire impacts to private residences west of Hwy 199. End state: Area to be protected is prepped and secured.						
8. Special Instructions: **Indicates IA Resources. OSFM Task Force 35 & 36 assigned to structure assessment and prep in zones 4 & 5.						
9. Division/Group Communication Summary						
See Communications Plan						
Prepared by (Resource Unit Ldr) <i>Meredith Butcher/Carolyn Zanotto</i>		Approved by (Planning Sect. Ch.) <i>Aileen Nichols</i>		Date 08/27/2023	Time 2000	

DIVISION ASSIGNMENT LIST				1. Branch		2. Group Structure East	
3. Incident Name Smith River Complex North				4. Operational Period Date: 08/28/2023 Time: 0600-2200			
5. Operations Personnel							
Operations Chief		John Spencer Jesse Stone - t		Group Supervisor		Miranda Stuart Billy Turner - t	
Safety Officer		Ray Hershey		Air Attack			
6. Resources Assigned this Period							
Strike Team/Task Force/Resource Designator		Leader	# Persons	LWD	Drop Off PT./Time		Pick Up PT./Time
1	O-50150 TFLD	Aaron Bruning	1	9/8	Lake Selmac ICP		Lake Selmac ICP
2	O-255 STEN - t	Mike McCaslin	1	9/8	Lake Selmac ICP		Lake Selmac ICP
3	C-50005 CRW2 Lava River	Roberto Ceja	20	9/7	Lake Selmac ICP		Lake Selmac ICP
4	C-50024 CRW2 Big Bark	TJ Hiner	20	9/8	Lake Selmac ICP		Lake Selmac ICP
5	C-62 CRW2 Alliance	Caesar Andrade	20	9/7	Lake Selmac ICP		Lake Selmac ICP
6	E-50041 ENG3 Allied Water Service	Matthew	3	9/5	Lake Selmac ICP		Lake Selmac ICP
7	E-50153 ENG3 NW Fire	Larry Bear	4	9/9	Lake Selmac ICP		Lake Selmac ICP
8	E-50045 ENG6 Grande Ronde Tribe	Waylon Rich	3	9/5	Lake Selmac ICP		Lake Selmac ICP
9	E-50051 ENG6 Woodland Hills FD	Lance Wollabaek	3	9/5	Lake Selmac ICP		Lake Selmac ICP
10	E-50150 ENG6 Mojave Valley	David Aragon	3	9/8	Lake Selmac ICP		Lake Selmac ICP
11	E-50145 ENG6 BIA 0463	Spencer Washakie	3	9/9	Lake Selmac ICP		Lake Selmac ICP
12	E-50151 ENG6 Surprise Fire	Hap Reitz	3	9/9	Lake Selmac ICP		Lake Selmac ICP
13	E-50144 ENG6 Smithfield	Dustin Hooton	3	9/9	Lake Selmac ICP		Lake Selmac ICP
14	E-50137 WTS2 Genesis	Gary Quinones	1	9/8	Lake Selmac ICP		Lake Selmac ICP
15	E-50159 DZR3 Dirt Doctor	Steve Haight	2	9/10	Lake Selmac ICP		Lake Selmac ICP
16							
17	TASK FORCE 1						
18	E-408 ENG4	Mike Misek	3	8/29	Lake Selmac ICP		Lake Selmac ICP
19	E-279 WTS2 Darrah Logging 4	Bob Cretton	1	8/30	Lake Selmac ICP		Lake Selmac ICP
20							
21	O-50027 Medic 6	Alex Vera	1	9/5	Lake Selmac ICP		Lake Selmac ICP
22							
		Meal count	95				
7. Control Operations: Task: Assess and prep structures east of Hwy 199. Purpose: Minimize fire impacts to private residences in the fire area. End state: Area to be protected is prepped and secured.							
8. Special Instructions:							
9. Division/Group Communication Summary							
See Communications Plan							
Prepared by (Resource Unit Ldr) <i>Meredith Butcher/Carolyn Zanotto</i>				Approved by (Planning Sect. Ch.) <i>Aileen Nichols</i>		Date 08/27/2023	Time 2000

DIVISION ASSIGNMENT LIST				1. Branch		2. Group Contingency West	
3. Incident Name Smith River Complex North				4. Operational Period Date: 08/28/2023 Time: 0600-2200			
5. Operations Personnel							
Operations Chief		John Spencer Jesse Stone - t		Group Supervisor		Derreck Johnson	
Safety Officer		Ray Hershey		Air Attack			
6. Resources Assigned this Period							
Strike Team/Task Force/Resource Designator		Leader	# Persons	LWD	Drop Off PT./Time		Pick Up PT./Time
1	O-60001TFLD	Tarilton Beall	1	9/5	Lake Selmac ICP		Lake Selmac ICP
2	O-60002 TFLD	Doug Thackery	1	9/5	Lake Selmac ICP		Lake Selmac ICP
3	O-60003 HEQB	Hunter Stratton	1	9/5	Lake Selmac ICP		Lake Selmac ICP
4	O-60004 HEQB	Travis Wyndearo	1	9/5	Lake Selmac ICP		Lake Selmac ICP
5	O-60006 HEQB - t	George Sheppard	1	9/5	Lake Selmac ICP		Lake Selmac ICP
6							
7	O-60009 SFAL Crow Cutting	William Crow	1	9/5	Lake Selmac ICP		Lake Selmac ICP
8	O-60010 FMOD Arrows Timber & Fire	Tom O'Donnel	2	9/5	Lake Selmac ICP		Lake Selmac ICP
9							
10	C-60000 CRW2 Grayback Forestry	Dan Siller	20	9/7	Lake Selmac ICP		Lake Selmac ICP
11							
12	E-60000 MBM2 Parker Excavation	Ryan Lehman	2	9/5	Lake Selmac ICP		Lake Selmac ICP
13	E-60001 MBM2 Parker Excavation	Jeff Moody	2	9/5	Lake Selmac ICP		Lake Selmac ICP
14	E-60002 DZR1 Hyde Trucking	Luke Hyde	2	9/5	Lake Selmac ICP		Lake Selmac ICP
15	E-60003 DZR1 Ira IV Excavating	Ed Podoll	2	9/5	Lake Selmac ICP		Lake Selmac ICP
16	E-60004 DZR1 Gregg Hyde Logging	Gregg Hyde	2	9/5	Lake Selmac ICP		Lake Selmac ICP
17	E-60005 DZR3 Arrows Timber & Fire	Dan Syfert	2	9/5	Lake Selmac ICP		Lake Selmac ICP
18	E-60006 DZR3 Ira IV Excavating	Ed Podoll III	2	9/5	Lake Selmac ICP		Lake Selmac ICP
19							
20							
21							
22							
		Meal count	42				
7. Control Operations: Task: Scout and establish control lines west of 4402 Rd, including residences on Arrowhead Dr between Hwy 199 & 4402 Rd. Purpose: Keep fire south of control lines and west of 4402 Rd. End state: Minimize impacts to communities and infrastructure.							
8. Special Instructions: UTVs E-60007, E-60008, E-60009 Grayback Forestry. REAFs Porter, Hughes, Saunders, Galuchie, Spendel, Bucher and Mero will contact DIVS upon entering and exiting their respective divisions.							
9. Division/Group Communication Summary							
See Communications Plan							
Prepared by (Resource Unit Ldr) <i>Meredith Butcher/Carolyn Zanotto</i>			Approved by (Planning Sect. Ch.) <i>Aileen Nichols</i>			Date 08/27/2023	Time 2000

DIVISION ASSIGNMENT LIST			1. Branch		2. Group Contingency East	
3. Incident Name Smith River Complex North			4. Operational Period Date: 08/28/2023 Time: 0600-2200			
5. Operations Personnel						
Operations Chief		John Spencer Jesse Stone - t		Group Supervisor		Randy Anderson
Safety Officer		Ray Hershey		Air Attack		
6. Resources Assigned this Period						
Strike Team/Task Force/Resource Designator		Leader	# Persons	LWD	Drop Off PT./Time	Pick Up PT./Time
1						
2						
3						
4						
5						
6						
7						
8						
9						
10						
11						
12						
13						
14						
15						
16						
17						
18						
19						
20						
21						
22						
		Meal count				
7. Control Operations: Task: Assess and scout Little Sanger Peak & Chicago Creek drainage for future control lines. Purpose: Establish contingency lines to connect with Div MM to the south. End state: Minimize impacts to residences in Takilma and Sunstar north and east of control lines.						
8. Special Instructions:						
9. Division/Group Communication Summary						
See Communications Plan						
Prepared by (Resource Unit Ldr) <i>Meredith Butcher/Carolyn Zanotto</i>		Approved by (Planning Sect. Ch.) <i>Aileen Nichols</i>		Date 08/27/2023	Time 2000	

DIVISION ASSIGNMENT LIST			1. Branch		2. Division Staging	
3. Incident Name Smith River Complex North			4. Operational Period Date: 08/28/2023 Time: 0600-2200			
5. Operations Personnel						
Operations Chief		John Spencer Jesse Stone - t		Division Supervisor		
Safety Officer		Ray Hershey		Air Attack		
6. Resources Assigned this Period						
Strike Team/Task Force/Resource Designator		Leader	# Persons	LWD	Drop Off PT./Time	Pick Up PT./Time
1						
2						
3						
4						
5						
6						
7						
8						
9						
10						
11						
12						
13						
14						
15						
16						
17						
18						
19						
20						
21						
22						
		Meal count				
7. Control Operations: Task: Purpose: End state:						
8. Special Instructions:						
9. Division/Group Communication Summary See Communications Plan						
Prepared by (Resource Unit Ldr) <i>Meredith Butcher/Carolyn Zanotto</i>		Approved by (Planning Sect. Ch.) <i>Aileen Nichols</i>		Date 08/27/2023	Time 2000	

DIVISION ASSIGNMENT LIST			1. Branch		2. Division Night North (page 1)	
3. Incident Name Smith River Complex North			4. Operational Period Date: 08/28/2023 – 8/29/2023 Time: 1700-0900			
5. Operations Personnel						
Operations Chief		Larry Pingel		Division Supervisor		Josh Morris - t
Safety Officer		Ray Hershey		Air Attack		
6. Resources Assigned this Period						
Strike Team/Task Force/Resource Designator		Leader	# Persons	LWD	Drop Off PT./Time	Pick Up PT./Time
1 WEST						
2						
3 O-50118 TFLD		Brandon Rea	1	9/8	Lake Selmac ICP	Lake Selmac ICP
4						
5 C-50025 CRW1 Lakeview IHC		Sam Johnson	21	9/8	Lake Selmac ICP	Lake Selmac ICP
6 C-50010 CRW1 Laguna IHC		Eddie Arellano	23	9/7	Lake Selmac ICP	Lake Selmac ICP
7 C-50006 CRW2 Pacific Oasis 17		Donovan Culp	20	9/7	Lake Selmac ICP	Lake Selmac ICP
8						
9 E-50047 ENG3 J3		Matt Wilson	3	9/7	Lake Selmac ICP	Lake Selmac ICP
10 E-50102 ENG4 CSR Enterprises		Jaime Davila	3	9/8	Lake Selmac ICP	Lake Selmac ICP
11 E-50142 ENG6 Rue Forest		Anthony Cunial	3	9/9	Lake Selmac ICP	Lake Selmac ICP
12 E-50048 ENG6 Prescription Pyro		Jim Wheeler	3	9/7	Lake Selmac ICP	Lake Selmac ICP
13 E-50095 ENG6 3B's		Sharon Tanguay	3	9/7	Lake Selmac ICP	Lake Selmac ICP
14 E-50096 ENG6 Knight Fire		Chris Carswen	3	9/7	Lake Selmac ICP	Lake Selmac ICP
15 E-50101 ENG6 PatRick		Josh Northrup	3	9/7	Lake Selmac ICP	Lake Selmac ICP
16 E-50106 ENG6 BLR-5161		Jeremy Bollin	3	9/6	Lake Selmac ICP	Lake Selmac ICP
17						
18 E-50136 WTS2 Rogue Valley		Kevin George	1	9/8	Lake Selmac ICP	Lake Selmac ICP
19						
20 E-50125 DZR2 Table Mtn Forestry		Mitchell West	2	9/4	Lake Selmac ICP	Lake Selmac ICP
21						
22						
23 E-50086 AMBO 3		Darren Hearn	2	9/8	Lake Selmac ICP	Lake Selmac ICP
24 E-50098 Medic 23		Michael Weig	2	9/8	Lake Selmac ICP	Lake Selmac ICP
25						
		Meal count	98			
7. Control Operations: Task: Structure protection. Purpose: Protect structures. End state: Impacts have been minimized to communities and infrastructure.						
8. Special Instructions:						
9. Division/Group Communication Summary See Communications Plan						
Prepared by (Resource Unit Ldr) <i>Meredith Butcher/Carolyn Zanotto</i>		Approved by (Planning Sect. Ch.) <i>Aileen Nichols</i>		Date 08/27/2023	Time 2000	

DIVISION ASSIGNMENT LIST			1. Branch		2. Division Night North (page 2)	
3. Incident Name Smith River Complex North			4. Operational Period Date: 08/28/2023 – 8/29/2023 Time: 1700-0900			
5. Operations Personnel						
Operations Chief		Larry Pingel		Division Supervisor		Josh Morris - t
Safety Officer		Ray Hershey		Air Attack		
6. Resources Assigned this Period						
Strike Team/Task Force/Resource Designator		Leader	# Persons	LWD	Drop Off PT./Time	Pick Up PT./Time
1	EAST					
2						
3	O-50159 TFLD	Jacob Miller	1	9/9	Lake Selmac ICP	Lake Selmac ICP
4	O-50141 TFLD- t	Henry Mott	1	9/8	Lake Selmac ICP	Lake Selmac ICP
5						
6	E-398 ENG3 ESSI	Bryan Crawley	3		Lake Selmac ICP	Lake Selmac ICP
7	E-373 ENG3 Martinez	Mike Jaramillo	3		Lake Selmac ICP	Lake Selmac ICP
8	E-374 ENG3 J3 Contracting	Truett Chico	3	9/7	Lake Selmac ICP	Lake Selmac ICP
9	E-443 ENG3 BLM 8335	Mike Peak	5		Lake Selmac ICP	Lake Selmac ICP
10	E-396 ENG4 Rattlesnake Ridge Fire	Fabian Bremerman	3		Lake Selmac ICP	Lake Selmac ICP
11	E-264 ENG4 Piersol	Ashton Karel	3		Lake Selmac ICP	Lake Selmac ICP
12	E-157 ENG4 Idaho Trailblazers	Scott Leffler	3		Lake Selmac ICP	Lake Selmac ICP
13	E-247 ENG6 Oregon Woods	Jessica Wilcox	3		Lake Selmac ICP	Lake Selmac ICP
14	E-255 ENG6 West Coast	Nick Miller	3		Lake Selmac ICP	Lake Selmac ICP
15	E-399 ENG6 Allen Fire	Pete Allen	3		Lake Selmac ICP	Lake Selmac ICP
16						
17	E-378 WTT2 Pine Top	Omar Apodaca	2		Lake Selmac ICP	Lake Selmac ICP
18						
19	E-50155 SKG1 Hacker Machines		2	9/8	Lake Selmac ICP	Lake Selmac ICP
20	E-50157 SKG1 Pacific Ridgeline		2	9/8	Lake Selmac ICP	Lake Selmac ICP
21	E-50092 DZR2 Lone Pine Equipment	Rusty Lamar	2	9/8	Lake Selmac ICP	Lake Selmac ICP
22						
23	E-50161 AMBO 4	Charlie Campbell	2	9/10	Lake Selmac ICP	Lake Selmac ICP
24	E-50097 Medic 22	Chris Hardesty	2	9/8	Lake Selmac ICP	Lake Selmac ICP
25					Lake Selmac ICP	Lake Selmac ICP
		Meal count	46			
7. Control Operations: Task: Structure protection. Purpose: Protect structures. End state: Impacts have been minimized to communities and infrastructure.						
8. Special Instructions:						
9. Division/Group Communication Summary						
See Communications Plan						
Prepared by (Resource Unit Ldr) <i>Meredith Butcher/Carolyn Zanotto</i>		Approved by (Planning Sect. Ch.) <i>Aileen Nichols</i>		Date 08/27/2023	Time 2000	

AIR OPERATIONS SUMMARY ICS-220

Incident Name / Number SMITH RIVER COMPLEX - CA-SRF-000968	Sunrise 6:36	Startup 7:06	Cutoff 19:25	Sunset 7:55:00 PM
--	------------------------	------------------------	------------------------	-----------------------------

General Remarks, Safety Notes, Hazards, Air Operations Special Equipment, etc.
 TRACK ALL DIPSITE LOCATIONS / NUMBER OF DIPS / GALLONS TAKEN.
 TRACK ALL DROP LOCATIONS / NUMBER OF DROPS / GALLONS DROPPED.
 ALL GPS DATA TO BE COLLECTED IN DEGREES, MINUTES, DECIMAL MINUTES, FORMAT.
*AVOID Aerial Application of Retardant / Foam / Agent within 300' of Waterways, Bodies of Water, etc.
 If Retardant / Foam / Agent is Dropped Within These Areas Immediately Notify the AOB/D and Provide the Following Information: Lat / Long, Estimated Number of Gallons and a Map Detailing The Area. Watch for Powerlines. Caution when operating in non-TFR areas.*

Report % Effort of Buckets in Cost Sheet Notes: % Federal & % Private (ODF)

Frequencies	TX	Tone	RX	Tone	AM / FM	Position		Name	Phone	Trainee	Phone
						AOBD	ASGS				
Command-South (Linked)	See South 205				FM			John Crotty	805-440-6186		
Command-North (Linked)	See North 205				FM			Curt Warner	805-478-1231		
AIR / GROUND - TACTICAL	169.4875	0.0000	169.4875	0.0000	FM			George Leite (Cave)	360-581-8428		
AIR/AIR ROTARY WING	123.7250	0.0000	123.7250	0.0000	AM			Natalie Bench (Crescent)	928-358-0963		
TFR	126.0750	0.0000	126.0750	0.0000	AM			Casey Jones	559-696-3878	Antonio Jimenez	530-310-5797
AIR TACTICS	173.7000	0.0000	173.7000	0.0000	FM			Rick Thompson	970-209-6989		
AIR/GROUND COMMAND	173.8500	0.0000	173.8500	0.0000	AM			Lucas Rhea	702-521-8406	Seth Alberts	308-215-0425
VMED 29-MEDICAL North	155.3475	156.7	155.3475	156.7	AM			Steve Ramaekers	208-473-8708		
TOLC	168.1375	0.0000	168.1375	0.0000	FM			Zach Freundlich	508-380-1904		
CALCORD - MEDICAL South	156.0750	156.7 (6)	156.0750	156.7 (6)	FM			Steve Markason	307-690-5185		
AIRGUARD - Emergency Only	168.6250	110.9 (1)	168.6250	0.0000	FM			Bert Smith (T)	406-660-7371		
See IAP for IA 205's								Cave Helibase	208-891-6878		ivhb2023@gmail.com

HELICOPTERS (Use page 2 if Needed)

FAA #	Type	Make/Model	Helibase	Avail	Start	Remarks	FAA #	Type	Make/Model	Helibase	Avail	Start	Remarks
HT 16FH	1	UH-60	Cave	0800	0830	LL BUCKET	HB 625CK	1	S-61N	Merlin	0800	0830	LL BUCKET
HB 534VG	1	UH-60	Cave	0800	0830	LL BUCKET	HT 917	1	S-61	Merlin	0800	0830	LL TANK
HB 391SH	1	UH-60	Cave	0800	0830	LL BUCKET	H-18BH	3	Bell 407	Cave	0800	0830	HLCO
HB 699RH	1	KMAX	Cave	0800	0830	LL BUCKET	H-132BH	3	AS-350B3	Cave	0800	0830	PAX/RECON/LL/PSD
H-527	2	Bell 212	Cave	0800	0830	LL BUCKET	H-942AE	3	AS-350B3E	Brookings	0800	0830	PAX/RECON/LL/PSD
UR31	3	Alta X	Gasquet	TBD	TBD	IR/PSD (Independence)	UR32/34	3	Alta X/DJI	Cave	TBD	TBD	IR/PSD (Black Module)
UR33	3	Alta X	Gasquet	TBD	TBD	IR (Eagle Lake WFM)	UR35	3	DJI M600	Cave	TBD	TBD	IR/PSD (Lakeview IHC - Night)
UF1	1	Aerovel Flex	Gasquet	TBD	TBD	IR (Stroud Module)							
SOUTH MEDICAL A/C							NORTH	MEDICAL A/C					
TBD	3	MH-65	Humboldt			Coast Guard	20695	1	HH-60M	Roseburg			OR National Guard
H-902	2	UH1	Kneeland			Cal Fire	H-38HX	3	AS-250B3	Sun River			Shorthaul - 187 nm
H-14	3	A-Star B3	Redding			CHP							

FIXED WING (Use Page 2 if Needed)

FAA #	Type	Make/Model	Base	Avail	Start	Remarks	FAA #	Type	Make/Model	Base	Avail	Start	Remarks
N-7MZ	1	C-501	RDD	0800	0830	ATGS (RDD)	N-688TM	1	AC-680V	MED	800	830	ATGS (MFR)

INCIDENT RADIO COMMUNICATIONS PLAN (ICS 205)

Controlled Unclassified Information//Basic

1. Incident Name:		2. Date/Time Prepared:		3. Operational Period:						
SMITH RIVER COMPLEX NORTH		Date: 08/27/2023 Time: 18:00		Date/Time From: 08/28/2023 0700 Date/Time To: 08/29/2023 0700						
4. Basic Radio Channel Use:										
Zone Group	Ch #	Function	Channel Name/Trunked Radio System Talkgroup	Assignment	RX Freq	RX Tone/NAC	TX Freq	TX Tone/NAC	Mode (A, D, or M)	Remarks
	1	TACTICAL	TAC 1	UNASSIGNED	168.0500	192.8	168.0500	192.8	A	UNASSIGNED
	2	TACTICAL	TAC 2	DIV I	168.2000	192.8	168.2000	192.8	A	
	3	TACTICAL	TAC 3	DIV K	168.6000	192.8	168.6000	192.8	A	
	4	TACTICAL	TAC 4	STRUCTURE E	166.7250	192.8	166.7250	192.8	A	
	5	TACTICAL	TAC 5	DIV H	166.7750	192.8	166.7750	192.8	A	
	6	TACTICAL	TAC 6	STRUCTURE W	168.2500	192.8	168.2500	192.8	A	
	7	CMD	CMD 7	ALL DIV	172.9875	162.2	165.0500	162.2	A	BOLAN MOUNTAIN (E)
	8	CMD	CMD 8	ALL DIV	170.3000	162.2	164.0000	162.2	A	FIDDLER MOUNTAIN (N)
	9	CMD	CMD 9	ALL DIV	169.0750	162.2	162.4125	162.2	A	MONKEY CR RIDGE (S)
	10	TACTICAL	VTAC 11	UNASSIGNED	151.1375	156.7	151.1375	156.7	A	UNASSIGNED
	11	TACTICAL	NIFC T1	DIV D	168.0500	131.8	168.0500	131.8	A	
	12	TACTICAL	NIFC T4	DIV MM	166.7250	131.8	166.7250	131.8	A	
	13	AIR TO GROUND	A/G CMD	ALL DIVS	173.8500	000.0	173.8500	000.0	A	BRANCH AND DIVISION USE
	14	AIR TO GROUND	A/G TAC	ALL DIVS	169.4875	000.0	169.4875	000.0	A	AIR TO GROUND TACTICAL
	15	AIR MEDICAL	VMED 29	ALL DIVS	155.3475	156.7	155.3475	156.7	A	EMS AIR COORDINATION
	16	AIR TO GROUND	AIRGUARD	ALL DIVS	168.6250	000.0	168.6250	110.9	A	EMERGENCY AIRCRAFT CONTACT
5. Special Instructions: COMMUNICATIONS NORTH PHONE NUMBER: 971-245-0253 (NORTH ONLY)										
6. Prepared By COML										
				Name: Bruce Hanna						
				Signature: /s/ Bruce Hanna						
ICS 205										
				IAP Page						
				Date/Time: 8/27/2023 19:00						

INCIDENT RADIO COMMUNICATIONS PLAN (ICS 205)

Controlled Unclassified Information//Basic

1. Incident Name:		2. Date/Time Prepared:		3. Operational Period:							
SMITH RIVER COMPLEX NORTH INITIAL ATTACK ZONE		Date: 08/27/2023 Time: 17:00	Date/Time From: 08/28/23 0700	Date/Time To: 08/29/23 0700							
4. Basic Radio Channel Use:											
Zone Group	Ch #	Function	Channel Name/Trunked Radio System Talkgroup	Assignment	RX Freq	RX Tone/NAC	TX Freq	TX Tone/NAC	Mode (A, D, or M)	Remarks	
IA	1	CMD	MONKEY	IA	172.3750	000.0	164.1750	110.9	A	6 RIVERS MONKEY RIDGE	
IA	2	CMD	ONION	IA	171.3875	67.0	164.9625	173.8	A	RSF ONION	
IA	3	CMD	FIDDLER	IA	171.3875	67.0	164.9625	179.9	A	RSF FIDDLER	
IA	4	CMD	BOLAN	IA	171.3875	67.0	164.9625	186.2	A	RSF BOLAN	
IA	5	CMD	MT EMILY	IA	170.3750	67.0	164.1250	118.8	A	RSF GOLD BEACH (EMILY)	
IA	6	CMD	ODF SEXTON	IA	151.1450	000.0	159.2850	179.9	A	ODF SEXTON	
IA	7	CMD	ODF GRAY BK	IA	151.1450	000.0	159.2850	151.4	A	ODF GREY BACK	
IA	8	TAC	ODF RED	IA	151.3400	000.0	151.3400	156.7	A	ODF RED	
IA	9	A/G	ODF WHITE	IA	151.3100	000.0	151.3100	156.7	A	ODF WHITE A/G	
IA	10	TAC	ODF RVT	IA	159.2400	000.0	159.2400	156.7	A	ODF RVT	
IA	11	A/G	FS A/G51	IA	168.3125	000.0	168.3125	000.0	A	A/G 51	
IA	12	A/G	FS A/G62	IA	169.3625	000.0	169.3625	000.0	A	A/G 62	
IA	13	A/G	A/G CMD	IA	173.8500	000.0	173.8500	000.0	A		
IA	14	A/G	A/G TAC	IA	169.4875	000.0	169.4875	000.0	A		
IA	15	A/G	VMED 29	IA	155.3475	156.7	155.3475	156.7	A	EMS AIR COORDINATION	
IA	16	A/G	CAL CORD	IA	156.0750	156.7	156.0750	156.7	A	EMS AIR CORD	
5. Special Instructions: COMMUNICATIONS NORTH PHONE NUMBER: 971-245-0253 (NORTH ONLY)											
6. Prepared By (Communications Unit Leader)				Name: Bruce Hanna				Signature: /s/ Bruce Hanna			
ICS 205				IAP Page				Date/Time: 8/27/2023 19:35			

ICS 205 - INCIDENT RADIO COMMUNICATIONS PLAN

CONTROLLED UNCLASSIFIED
INFORMATION/BASIC

1. Incident Name: SMITH RIVER COMPLEX - SOUTH Incident Channels		2. Date/Time Prepared Date: 08/27/2023 Time: 1930		3. Operational Period: Date From: 08/28/23 Time From: 0700		Date To: 08/29/23 Time To: 0700			
4. Communications									
Ch#	Function	Name	Assigned To	Rx Freq	Rx Tone	Tx Freq	Tx Tone	Mode	Notes
1	COMMAND	NIFC C3	ALL DIVS	170.4250	(T3) 131.8	168.0750	(T3) 131.8	A	CAMP 6
2	COMMAND	NIFC C34	ALL DIVS	173.9750	(T3) 131.8	164.8625	(T3) 131.8	A	MONKEY RIDGE
3	COMMAND	NIFC C35	ALL DIVS	173.8625	(T3) 131.8	163.8250	(T3) 131.8	A	SHIP MTN LOOKOUT
4	COMMAND	NIFC C48	ALL DIVS	165.4625	(T3) 131.8	162.1750	(T3) 131.8	A	HIGH DIVIDE
5	COMMAND	NIFC C55	ALL DIVS	173.8375	(T3) 131.8	165.5125	(T3) 131.8	A	UNNAMED KNOB ABOVE RC DIP
6	TACTICAL	NIFC T1	DIVIDE STR GRP, D, NIGHT B/D	168.0500	(T3) 131.8	168.0500	(T3) 131.8	A	
7	TACTICAL	NIFC T3	A	168.6000	(T3) 131.8	168.6000	(T3) 131.8	A	
8	TACTICAL	NIFC T4	MM	166.7250	(T3) 131.8	166.7250	(T3) 131.8	A	
9	TACTICAL	NIFC T5	PP, B	166.7750	(T3) 131.8	166.7750	(T3) 131.8	A	
10	TACTICAL	NIFC T6	SS, VV, ALL CONTINGENCY	168.2500	(T3) 131.8	168.2500	(T3) 131.8	A	
11	TACTICAL	VFIRE 22	YY, NIGHT YY	154.2650	(T6) 156.7	154.2650	(T6) 156.7	A	
12	TACTICAL	VFIRE 24	GASQT/NIGHT STR GP	154.2725	(T6) 156.7	154.2725	(T6) 156.7	A	GASQUET STR GROUP/NIGHT STR GROUP
13	A/G CMD	A/G CMD	ALL DIVS	173.8500	0.0	173.8500	0.0	A	OPS, BRANCH AND DIVISION USE
14	A/G TAC	A/G TAC	ALL DIVS	169.4875	0.0	169.4875	0.0	A	AIR TO GROUND TACTICAL
15	TACTICAL	CALCORD	ALL DIVS	156.0750	(T6) 156.7	156.0750	(T6) 156.7	A	EMS AIR COORDINATION
16	AIRGUARD	AIRGUARD	ALL DIVS	168.6250	0.0	168.6250	(T1) 110.9	A	EMERGENCY
17									
18									
19									
20	AIRGUARD	AIRGUARD	ALL DIVS	168.6250	0.0	168.6250	(T1) 110.9	A	EMERGENCY
5. Special Instructions									
CURRENT CLONE: SSR825. COMMAND CHANNELS LINKED. FIND WHICH ONE WORKS BEST IN YOUR OPERATIONAL AREA. SMITH RIVER COMPLEX - SOUTH COMMUNICATIONS PHONE # 669-206-2274									
6. Prepared by (Communications Unit Leader): Name: GLENDON CHAN					Signature: <i>Glendon Chan</i>				
ICS 205 - CONTROLLED UNCLASSIFIED INFORMATION//BASIC					NIMS IAP		Date/Time: 08/27/23		
					1930				

I/A ICS 205 - INITIAL ATTACK INCIDENT RADIO COMMUNICATIONS PLAN

1. Incident Name: SMITH RIVER COMPLEX - SOUTH Page 2		2. Date/Time Prepared Date: 08/27/2023 Time: 1930		3. Operational Period: Date From: 08/28/23 Time From: 0700		Date To: 08/29/23 Time To: 0700	
---	--	--	--	---	--	------------------------------------	--

4. Communications									
Ch#	Function	Name	Assigned To	Rx Freq	Rx Tone	Tx Freq	Tx Tone	Mode	Notes
1	FOREST	SRF 12	I/A CMD	172.3750	0.0	164.1750	(T12) 127.3	A	GORDON MOUNTAIN, TONE 12
2	FOREST	SRF 4	I/A CMD	172.3750	0.0	164.1750	(T4) 136.5	A	SHIP MOUNTAIN, TONE 4
3	FOREST	SRF 1	I/A CMD	172.3750	0.0	164.1750	(T1) 110.9	A	MONKEY RIDGE, TONE 1
4	DISPATCH	HUU RPT	DISPATCH	151.2500	(T1) 110.9	159.4050	(T14) 151.4	A	Tx 151.4 T14, Rx 110.9 T1
5	TACTICAL	NIFC T2	I/A TAC	168.2000	0.0	168.2000	0.0	A	NIFC TAC 2
6	TACTICAL	R5 T4	I/A TAC	166.5500	0.0	166.5500	0.0	A	R-5 TAC 4
7	TACTICAL	R5 T5	I/A TAC	167.1125	0.0	167.1125	0.0	A	R-5 TAC 5
8	TACTICAL	R5 PROJ	I/A TAC	168.6625	0.0	168.6625	0.0	A	R5 PROJECT
9	TACTICAL	VTAC 14	I/A TAC	159.4725	(T6) 156.7	159.4725	(T6) 156.7	A	Tx/Rx 156.7 Tone 6
10	TACTICAL	CDF T3	I/A TAC	151.1750	(T16) 192.8	151.1750	(T16) 192.8	A	CDF Tac 3 Tx/Rx 192.8 Tone 16
11	TACTICAL	R5 T6	I/A TAC	168.2375	0.0	168.2375	0.0	A	R-5 TAC 6
12	LOCAL	GASQ>16	LOCAL	154.4150	0.0	154.0100	(T16) 192.8	A	Gasquet VFD Rpt Tx 192.8 Tone 16
13	A/G	AG-43	ALL DIVS	167.6000	0.0	167.6000	0.0	A	AIR TO GROUND PRIMAR
14	A/G	AG-08	ALL DIVS	166.8750	0.0	166.8750	0.0	A	AIR TO GROUND SECONDARY
15	TACTICAL	CALCORD	MEDICAL EVAC	156.0750	(T6) 156.7	156.0750	(T6) 156.7	A	EMS AIR COORDINATION
16	AIRGUARD	AIRGUARD	EMERGENCY	168.6250	0.0	168.6250	(T1) 110.9	A	EMERGENCY
17									
18									
19									
20	AIRGUARD	AIRGUARD	ALL DIVS	168.6250	0.0	168.6250	(T1) 110.9	A	

5. Special Instructions									
CLONE NAME: SSRCIA25 SMITH RIVER COMPLEX SOUTH IA ZONE									

6. Prepared by (Communications Unit Leader): Name: GLENDON CHAN					Signature: <i>Glendon Chan</i>				
ICS 205 - CONTROLLED UNCLASSIFIED INFORMATION//BASIC					Date/Time: 08/27/23				
					1930				

Mutual Respect

It's hot!

What we don't need is a hot head. It's time in the incident to remind everyone about mutual respect.

Please be patient and courteous. We work better when we are.

Remember, danger is only one letter away from anger.

Breaks

Breaks are an important component of our workday. They help us to stay focused, maintain positive attitudes, and ensure a safe work environment. Breaks also serve as opportunities to build or recharge crew and/or team morale.

Be cool, and have a safe shift.

Training

If you have been ordered as a trainee bring me your task book along with your red card or email it to *Team13trsp@outlook.com* and I will enter you into the training database for the fire. If you have questions feel free to call, text, email, or drop in.

Margaret Dietrich, HRSP/TNSP
Cell 360-701-3154 or Team13trsp@outlook.com



LOGISTICS

<p>Lake Selmac ICP Communications Phone #: 971-245-0253</p>	<p>Rough & Ready Supply/Ground Support (located across Hwy 199 from Cave Staging)</p>
<p>Kitchen Hours</p> <ul style="list-style-type: none"> • Breakfast 0530 – 0900 • Lunch/Water/ICE available at ICP • Dinner 1730 Swing/Night Shift Only • Dinner 1800 – 2200 <p>Showers</p> <ul style="list-style-type: none"> • Open 0500 – 1200 • Open 1400 – 2200 <p>Laundry – (located next to showers)</p> <ul style="list-style-type: none"> • Open 0500-2200 24hr turnaround 	<p>Supply</p> <ul style="list-style-type: none"> • Open 0600 – 2100 <p>Fuel Tender @ Cave Staging</p> <ul style="list-style-type: none"> • Open 0600 – 1000 • Open 1500 – 2100 <p>Weed Wash @ Cave Staging</p> <ul style="list-style-type: none"> • Open 0700 – 1900

Draft Sites and Pump Guidelines

Despite a wet spring, our region is still considered to be in a drought, which affects the average summer flow of many of our streams. Under these low-flow conditions, salmonids and other species are at risk of mortality due to higher-than-normal stream temps coupled with water shortage. Our water use during this incident could be the defining make-it-or-break-it threshold for the aquatic residents of some of these streams.

At draft sites, we ask that you pay special attention to the following;

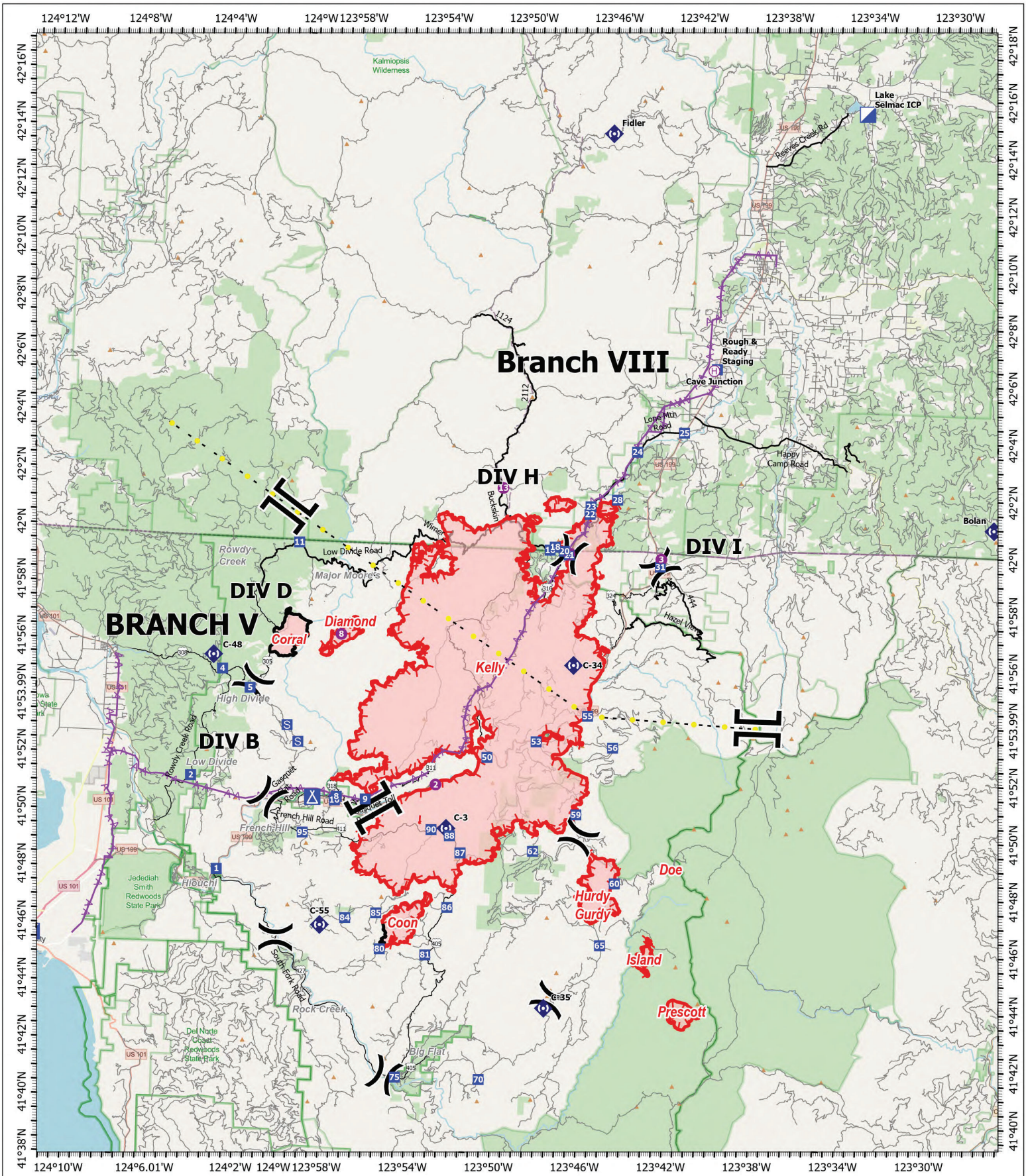
- If you need to construct a dam at the draft site to enhance the pool depth, please **do not fully dam the area** – make sure and **allow for at least half the water input to continue flowing** past / over the dam.
- If there are fine gravels, it is ok to move them around to deepen the intake area, but please **do not remove these fine gravels from the stream channel**. These gravels are what the fish use to spawn, so they are an extremely important component to the streams.
- If the **ingress/egress area starts getting muddy** please let a Resource Advisor know – we need to avoid increasing the sediment levels, especially during a drought year.

Thank you for helping to keep our water resources clean and critical fisheries intact! We really appreciate your efforts to **ensure the following guidelines are followed when using pumps;**

- **Use 3/32" fish screens** – if you need one, ask a Resource Advisor.
- All pumps must have a **spill kit** properly deployed.
- **Set pumps, fuel, jerry cans, etc. on level ground and ensure absorbent pads are changed when they become 50% saturated.**
- **Pads and liners need to be bagged, labeled, and hauled** to drop points or the designated site at ICP.

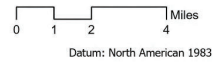


Good pump set-up



**SMITH RIVER
COMPLEX
NORTH**
CA-SRF-000968
8/27/2023
69,945 acres
IR updated 08/27/2023 @ 1142 PT

- Helispot
- Ⓜ Helibase
-) Division Break
- ⌌ Branch Break
- Incident Command Post
- Drop Point
- ⓧ Camp
- Ⓢ Staging Area
- Ⓜ Repeater
- Highlighted Feature
- ⚡ Aerial Hazard
- ▬ Contained
- ▬ Uncontained
- ▬ County Road
- ▬ Community Areas
- ▬ Major Roads
- ▬ Wildfire Daily Fire Perimeter



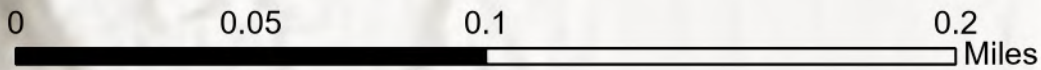
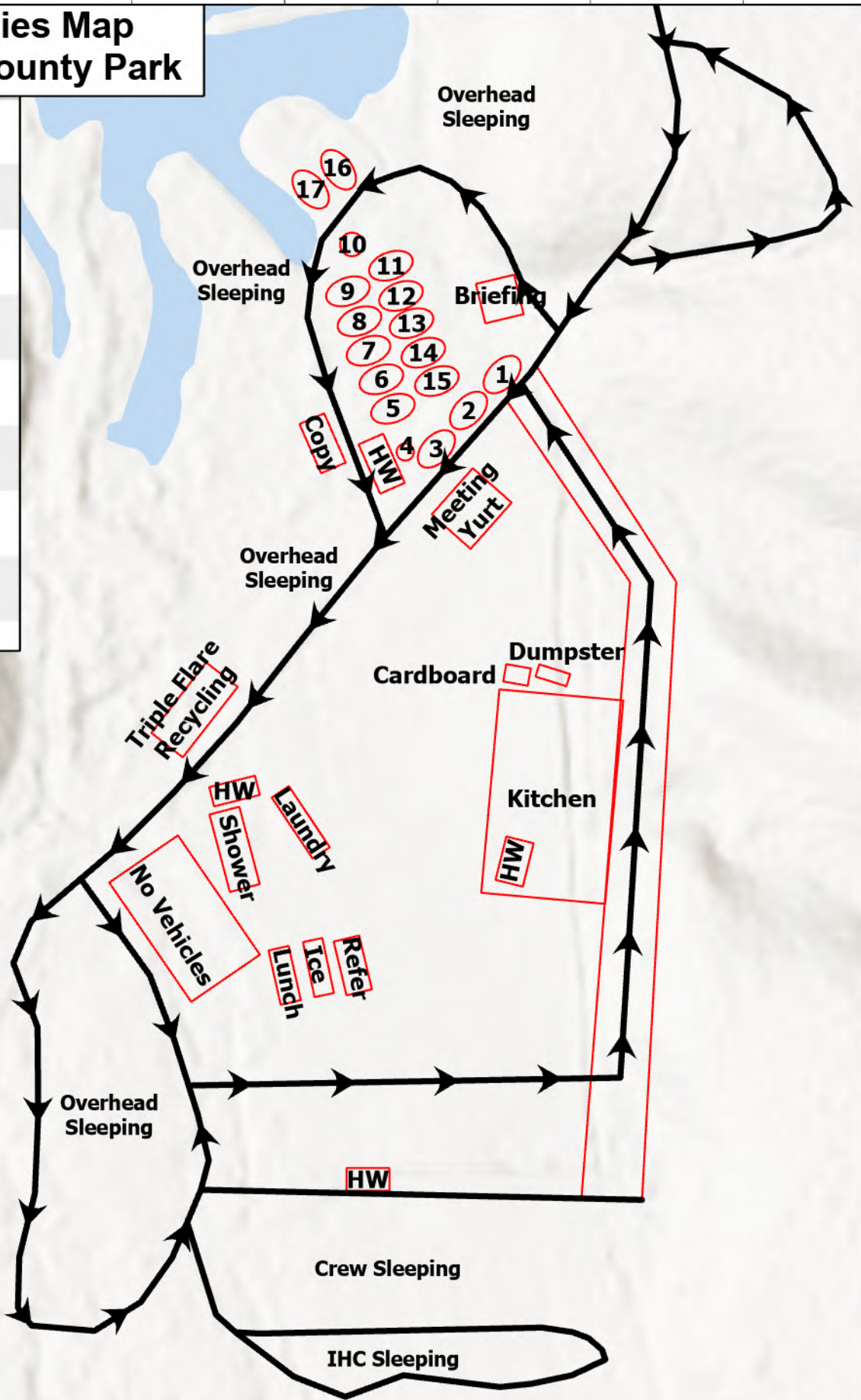
Datum: North American 1983

Author Name Updated: 8/27/2023 1508

Camp Facilities Map Lake Selmac County Park

Security	1
Communications	2
Medical	3
Ordering	4
Check-in/Demob	5
Plans	6
GIS/Situation	7
Logistics	8
IC/Liason	9
HR/Training	10
Operations	11
Resources/Air Ops	12
Safety/FBAN/IMET	13
PIO	14
Finance	15
Agency Administrators	16
Meeting Yurt	17

Ground support and supply moved to 30365 Redwood Hwy Cave Junction, OR 97523



RETURN TO PLANNING OPS BY 1300 HRS
Via radio (preferred method), text, email, photo, or cell phone
Project for Next Operational Period and 48 & 72 hours in the Future

DIVISION PLANNING SHEET		Division/ Group	Name Of Division /Group Supervisor		
Next Operational Period Date:					
Operations and Resource unit text number and e-mail					
<input type="checkbox"/> - Roll over assigned Resources <input type="checkbox"/> -Excess resources <input type="checkbox"/> -Correction to 204					
E or C number	Strike Team/Task Force/ Resource Designator	Leader	Number Persons	Comments	
<input type="checkbox"/> -Request for additional Resources					
Number	Type	Resource Kind	Number	Type	Resource Kind
Operational Projection/Resource Needs/Excess Resources (48 hours):					
Operational Projection/Resource Needs/Excess Resources (72 hours):					
Comments					

ACTIVITY LOG (ICS 214)

1. Incident Name:		2. Operational Period: Date From: _____ Date To: _____ Time From: _____ Time To: _____	
3. Name:	4. ICS Position:	5. Home Agency (and Unit):	
6. Resources Assigned:			
Name	ICS Position	Home Agency (and Unit)	
7. Activity Log:			
Date/Time	Notable Activities		
8. Prepared by: Name: _____ Position/Title: _____ Signature: _____			
ICS 214, Page 1		Date/Time: _____	

MEDICAL PLAN (206 WF)

1. Incident/Project Name				2. Operational Period				
Smith River Complex North				Date/Time: 8/28 0700 – 8/29 0700				
3. Ambulance Services								
Name	Complete Address	Phone	Advanced Life Support (ALS)					
AMR	Cave Junction, OR	911	Yes	No				
4. Air Ambulance Services								
Name	Phone	Type of Aircraft & Capability						
Mercy Flight	1-800-903-9000 (Press 0)	Critical Care Team of Paramedic and RN 24 hr, 100'x100' LZ.						
REACH	1-800-338-4045	Critical Care Team of Paramedic and RN 24 hr, 100'x100' LZ.						
Teton Short Haul	Smith North Comms/Rogue CC	ALS, Short Haul, Daytime-Sunriver, OR						
National Guard Hoist	Smith North Comms /NWCC	24 hr, Roseburg, OR						
5. Hospitals								
Name	Degrees Decimal Minutes		Travel Time From ICP		Phone	Helipad		Level of Care
	Lat:	42° 25.27' N	Air	90	541-472-7081	X		Level III Trauma
Asante 3 Rivers Medical Center (Grants Pass, OR)	Long:	123° 20.56' W	20	Min.				
	Lat:	42° 19.05' N	40	120	541-789-7367	X		Level II Trauma
Asante Rogue Regional Medical Center (Medford, OR)	Long:	122° 50.00' W	Min	Min.				
	Lat:	45° 32.668' N	1.5	5	503-413-4121	X		Level I Trauma Burn Center
Legacy Emanuel Hospital (Portland, OR)	Long:	122° 40.293' W	Hrs.	Hrs.				
	Lat:	41° 46.27454' N	X	2	707-464-8888		X	Level IV Trauma
Sutter Coast Hospital (Crescent City, CA)	Long:	124° 11.537' W		Hrs.				
	Lat:	40° 34.14' N	1	4	530-225-6000	X		Level II Trauma
Mercy Medical Center (Redding, CA)	Long:	122° 23.97' W	Hr.	Hrs.				
	Lat:	38° 33.20' N	2	6	916-734-3636	X		Level I Trauma Burn Center
UC Davis Medical Center (Sacramento, CA)	Long:	121° 27.28' W	Hrs.	Hrs.				
ICP	EMS Responders & Capability:		James Brown MEDL, EMPF 360-775-5413 Ben Meacham MEDL, EMTF 360-921-3817 Mark Notaras MEDL, EMTF 509-386-7860					
	Equipment Available on Scene:		ALS Kit, LP15 defib, O2, OTC meds					
	Medical Emergency Channel:		Smith River North Communications Plan					
	ETA for Ambulance to Scene:							
	Air:		30 – 60 min					
	Ground:		30 – 60 min					
	Approved Heli-Spot							
	Lat:							
Long:								
DIV H	EMS Responders & Capability:		Medic 2 Erica Jackson 662-588-2328 ALS Kit/AED EMT 1 Lisa Johnson 909-632-5999 BLS Kit/AED					
	Equipment Available on Scene:		ALS Kit, defib, O2, OTC meds					
	Medical Emergency Channel:		Smith River North Communications Plan					
	ETA for Ambulance to Scene:							
	Air:		30-60 min					
	Ground:		60 min					
	Approved Heli-Spot							
	Lat:							
Long:								
DIV I	EMS Responders & Capability:		Medic 4 Chad Payletz 954-326-9006 ALS Kit/AED Medic 24 Cody Baker 205-389-7064 ALS kit/AED/UTV EMT 4 Jonathon Cahill 319-431-1663 BLS Kit/AED AMBO 1 Mike Wertz 928-303-0856 ALS 4X4 Ambulance REMS 1 Dan Blaul 949-577-2663 ALS Kit/UTV Rope Rescue					
	Equipment Available on Scene:		ALS Kit, defib, O2, OTC meds					
	Medical Emergency Channel:		Smith River North Communications Plan					
	ETA for Ambulance to Scene:							
	Air:		30-60 min					
	Ground:		60 min					
	Approved Heli-Spot							
	Lat:							
Long:								

MEDICAL PLAN (206 WF)

DIV K	EMS Responders & Capability:	Medic 1 Joel Bower 360-461-7390 ALS Kit/AED Medic 3 Stephan Smith 636-748-0373 ALS Kit/AED EMT 2 James Henson 208-316-4658 BLS Kit/AED AMBO 2 Lanee Forkner 480-625-5353 ALS 4X4 Ambulance REMS 2 Brady Graham 541-282-4637 ALS Kit/UTV Rope Rescue
	Equipment Available on Scene:	ALS Kit, defib, O2, OTC meds
	Medical Emergency Channel:	Smith River North Communications Plan
	ETA for Ambulance to Scene:	
	Air:	30-60 min
	Ground:	60 min
	Approved Heli-Spot	
	Lat: Long:	
STRUCTURE EAST	EMS Responders & Capability:	Medic 6 Alex Vera 773-698-3224 ALS Kit/AED
	Equipment Available on Scene:	ALS Kit, defib, O2, OTC meds
	Medical Emergency Channel:	Smith River North Communications Plan
	ETA for Ambulance to Scene:	
	Air:	30-60 min
	Ground:	60 min
	Approved Heli-Spot	
	Lat: Long:	
STRUCTURE WEST	EMS Responders & Capability:	EMT 3 Trevor Brant 217-622-9158 BLS Kit/AED
	Equipment Available on Scene:	BLS Kit, defib, O2
	Medical Emergency Channel:	Smith River North Communications Plan
	ETA for Ambulance to Scene:	
	Air:	30-60 min
	Ground:	60 min
	Approved Heli-Spot	
	Lat: Long:	
CAVE HELIBASE	EMS Responders & Capability:	Medic 5 Ryan Shank 717-490-4990 ALS Kit/AED
	Equipment Available on Scene:	ALS Kit, defib, O2, OTC meds
	Medical Emergency Channel:	Smith River North Communications Plan
	ETA for Ambulance to Scene:	
	Air:	
	Ground:	10 min
	Approved Heli-Spot	
	Lat: Long:	
NIGHT NORTH	EMS Responders & Capability:	Medic 23 Michael Weig 605-545-5866 ALS Kit/AED/UTV Medic 22 Chris Hardesty 760-984-9915 ALS Kit/AED/UTV AMBO 3 Darren Hearn 302-245-5375 ALS 4X4 Ambulance AMBO 4 Charlie Campbell 360-798-3685 ALS Ambulance
	Equipment Available on Scene:	ALS Kit, defib, O2, OTC meds
	Medical Emergency Channel:	Smith River North Communications Plan
	ETA for Ambulance to Scene:	
	Air:	60 min
	Ground:	60 min
	Approved Heli-Spot	
	Lat: Long:	

Prepared By (Medical Unit Leader)	Date	Reviewed By (Safety Officer)	Date
Ben Meacham MEDL	8/27/2023	Ray Hershey SOF2	8/27/2023
Signature: <i>Ben Meacham</i>		Signature: <i>Ray Hershey</i>	

MEDICAL PLAN (ICS 206 WF)

Controlled Unclassified Information//Basic

Medical Incident Report

FOR A NON-EMERGENCY INCIDENT, WORK THROUGH CHAIN OF COMMAND TO REPORT AND TRANSPORT INJURED PERSONNEL AS NECESSARY.

FOR A MEDICAL EMERGENCY: IDENTIFY ON-SCENE INCIDENT COMMANDER BY NAME AND POSITION AND ANNOUNCE "MEDICAL EMERGENCY" TO INITIATE RESPONSE FROM IMT COMMUNICATIONS/DISPATCH.

Use the following items to communicate situation to communications/dispatch.

1. CONTACT COMMUNICATIONS / DISPATCH (Verify correct frequency prior to starting report)

Ex: "Communications, Div. Alpha. Stand-by for Emergency Traffic."

2. INCIDENT STATUS: Provide incident summary (including number of patients) and command structure.

Ex: "Communications, I have a Red priority patient, unconscious, struck by a falling tree. Requesting air ambulance to Forest Road 1 at (Lat./Long.) This will be the Trout Meadow Medical, IC is TFLD Jones. EMT Smith is providing medical care."

Severity of Emergency / Transport Priority	<input type="checkbox"/> RED / PRIORITY 1 Life or limb threatening injury or illness. Evacuation need is IMMEDIATE <i>Ex: Unconscious, difficulty breathing, bleeding severely, 2° – 3° burns more than 4 palm sizes, heat stroke, disoriented.</i> <input type="checkbox"/> YELLOW / PRIORITY 2 Serious Injury or illness. Evacuation may be DELAYED if necessary. <i>Ex: Significant trauma, unable to walk, 2° – 3° burns not more than 1-3 palm sizes.</i> <input type="checkbox"/> GREEN / PRIORITY 3 Minor Injury or illness. Non-Emergency transport <i>Ex: Sprains, strains, minor heat-related illness.</i>	
Nature of Injury or Illness & Mechanism of Injury		<i>Brief Summary of Injury or Illness (Ex: Unconscious, Struck by Falling Tree)</i>
Evacuation Request		<i>Air Ambulance / Short Haul/Hoist Ground Ambulance / Other</i>
Patient Location		<i>Descriptive Location & Lat. / Long. (WGS84)</i>
Incident Name		<i>Geographic Name + Medical (Ex: Trout Meadow Medical)</i>
On-Scene Incident Commander		<i>Name of on-scene IC of Incident within an Incident (Ex: TFLD Jones)</i>
Patient Care		<i>Name of Care Provider (Ex: EMT Smith)</i>

3. INITIAL PATIENT ASSESSMENT: Complete this section for each patient as applicable (start with the most severe patient)

Patient Assessment: See IRPG PAGE 106

Treatment:

4. EVACUATION PLAN:

Evacuation Location (if different): (Descriptive Location (drop point, intersection, etc.) or Lat. / Long.) Patient's ETA to Evacuation Location:

Helispot / Extraction Site Size and Hazards:

5. ADDITIONAL RESOURCES / EQUIPMENT NEEDS:

Example: Paramedic/EMT, crews, immobilization devices, AED, oxygen, trauma bag, IV/fluid(s), splints, rope rescue, wheeled litter, HAZMAT, extrication

6. COMMUNICATIONS: Identify State Air/Ground EMS Frequencies and Hospital Contacts as applicable

Function	Channel Name/Number	Receive (RX)	Tone/NAC *	Transmit (TX)	Tone/NAC *
COMMAND					
AIR-TO-GRND					
TACTICAL					

7. CONTINGENCY: Considerations: If primary options fail, what actions can be implemented in conjunction with primary evacuation method? Be thinking ahead..

8. ADDITIONAL INFORMATION: Updates/Changes, etc.

REMEMBER: Confirm ETAs of resources ordered. Act according to your level of training. Be Alert. Keep Calm. Think Clearly. Act Decisively.