

INCIDENT ACTION PLAN

SMITH RIVER COMPLEX - SOUTH

CA-SRF-000968

P5QJ6L



OPERATIONAL PERIOD


8/28/2023 0700

to

8/29/2023 0700



ORGANIZATION ASSIGNMENT LIST (ICS 203)

1. Incident Name: SMITH RIVER COMPLEX - SOUTH		2. Operational Period: Date From: 8/28/2023 Time From: 0700		Date To: 8/29/2023 Time To: 0700	
3. Incident Commander(s) and Command Staff:			7. Operation Section:		
IC/UC's	Tom Clemo / Stephen Fillmore(t)	Day Operations	Scott Grasmick / Nick Cleary(t)		
Deputy	Jon Lucas	Strategic Operations	Travis Ederer		
Safety Officer	Rick Bertram, Ronald Plummer	Planning Operations	Tom Himmelrich / Trevor Johnson		
Information Officer	T. Stokesberry / T. Engberg / L. Walker	Night Operations	Joe Reyes		
Liaison Officer	R. Cablayan / J. Jones / B. Neumann / A. Widling / D. Gatewood	Branch	V	Shaun Craig / Erick D'Amico(t)	
		Division/Group	A	Rick Dykhouse / Neal McCann(t)	
4. Agency/Organization Representatives:			Division/Group	B	Jere Classay / Andy Bellar-Mariscal(t)
Agency/Organization	Name	Division/Group	D	Patrick Bye / Scott Roeber(t)	
SRF Forest Supervisor	Ted McArthur	Division/Group	GASQUET STR GRP	Brett Hildebrand/ Michael Shiffar(t)	
Rogue/Siskiyou AREPs	D. Quinones / J. Winn / A. Watson	Division/Group	DIVIDE STR GRP	C. Todd / N. Gamboa / R. Roberts(t)	
SRF Agency Admin	K. Allen / A. Skowlund	Branch	XX	Joe Tieso	
CAL OES (ESC)	Robyn Cole	Division/Group	MM	Ron Oatman / Josh Fudge(t)	
CAL OES FIRE	Ryan Wakefield	Division/Group	PP	Corey Stowe / Jason Falarski(t)	
CAL Fire	Kurt McCray / Brandon Rodgers	Division/Group	SS	Brandon Paige / Richard Zinchuk(t)	
CHP	Lt. Pete Roach	Division/Group	VV	Michael Willardson / Kevin Montoya(t)	
Del Norte CO. OEM	Deborah Otenberg	Division/Group	YY	Todd McNeal / Keith McMillen(t)	
Crescent City Manager	Eric Wier	Branch	CONTINGENCY	Jeff Shea	
SRF Sheriff Office	Jennifer Wooley	Division/Group	CONTINGENCY	Nick Nava / Rich Durrell(t)	
Del Norte Sheriff LELO	Jon Maxwell	Division/Group	CAL FIRE CONTINGENCY	Anthony Pescatore / Ryan Blume(t)	
Crescent City Police Chief	Richard Griffin	Division/Group			
Crescent City Fire Chief	Kevin Carey	Division/Group			
NPS LEO	Daniel Owens	Branch			
Bureau of Indian Affairs	Nathan Gogna	Division/Group	NIGHT STR GRP	Ryan Edmondson / Jonathan Cripe(t)	
Tolowa Tribe	Amanda O'Connell	Division/Group	NIGHT B/D	Josh Sunde / Brad Arganbright(t)	
Red Cross	Mary Dormind	Division/Group	NIGHT YY	James Robbins / Paul Coda(t)	
Resource Advisor	AJ Donnell	Division/Group			
5. Planning Section:			Division/Group		
Chief	John Germanetti	Branch			
Deputy	Jonathan Roberts (t)	Division/Group			
Resource Unit	Hudley/Nahas(t)/Sketo(t)/Moreno(t)	Division/Group			
Situation Unit	M. Held / J. Hunter / Z. Jackson(t)	Division/Group			
Demobilization Unit	Mike Dunkel	Division/Group			
GISS	E.Dolhanski / D. Beasley / E.Opliger	Division/Group			
FBAN	Nic Elmquist	Air Operations Branch		Director:	John Crotty
IMET	Donny Dumont	Air Support Group Supervisor		Curt Warner	
Training Specialist	John Leblanc	Air Tactical Group Supervisor			
Check-In Recorder	David Charron(t)/Margot Leech(t)	Helibase Manager			
6. Logistics Section					
Chief	Bob Feldtz / Mike Farmer(t)	8. Finance/Administration Section			
Facilities Unit	Cassie Buckley(t)	Chief	Lisa Dow		
Ground Support Unit	Kevin Palm	Time Unit	Amanda Folendorf / Tiffanie Sachse-Santi		
Communications Unit	Glendon Chan / Chris Oliver(t)	Personnel Time	Ryan Bridgen / Terese Toomey(t)		
Medical Unit	J. Emerson/M. Lencioni/M. Caffey(t)	Comp/Claims Unit	Tina Weaver		
ITSS	Marty Cohn / Justin Martin(t)	Cost Unit	Sandra Tarvin		
Prepared By: Name:	Jonathan Roberts	Position/Title:	PSC	Signature:	
ICS 203		Date/Time:	8/27/2023 2300 hours		



Fire Weather Forecast



FORECAST NO: 11
PREDICTION FOR: Monday-Tuesday
DATE: August 28th, 2023
FORECAST ISSUED: 1800 August 27th, 2023

FIRE: Smith River Complex South
UNIT: CA-SRF-968
IMET: Donny Dumont (208-577-1622)
SIGNED: *Donny Dumont*

WEATHER DISCUSSION: * Valley elevations = 400ft (Gasquet), Ridgetop elevations = 3500 ft (Camp Six) *
 Another day of moderated fire weather conditions with marine intrusion airmass, light diurnally driven winds and smoke leading to significant shading below 3K feet on western side of fire. Expect extremely low visibility once again in the morning due to the combination of smoke and fog, with visibility improving on west side of fire by noon as inversion lifts. Downslope winds will become southwest during the afternoon but will remain light with gusts below 15mph on ridges. Inversion will develop overnight with weak easterly winds on the ridges and downslope winds in valleys. By Tuesday a weak trough moves through the area bringing slightly stronger westerly winds.

TODAY:

WEATHER: Early morning fog west side of fire, clearing by 9am. Heavy smoke in valleys near the fire, visibility improves west side of fire during the afternoon.

MAX TEMP:	Valleys: 73-78°F (Little Change)	MIN RH:	Valleys: 50-60% (Little Change)
	Ridgetops: 70-75°F (Little Change)		Ridgetops: 45-55% (Little Change)

CHC WTG RAIN: 0% **LAL:** 1 **SFC VIS:** .5 to 1 mile, better west in the afternoon

WINDS: **Valleys:** Morning downslope 2-4 mph afternoon upslope 4-9 mph.
(20 feet) **Ridgetops:** Morning northeast 5 mph, west 7-12 mph gusts to 18 mph.

MIXING HEIGHT: Rising to 3,000 ft by 1400. **TRANSPORT WIND:** West 8-12 mph.

TONIGHT:

WEATHER: Mostly clear with valley smoke below 3500ft. Weak thermal belt 2000 to 3500 ft.

MIN TEMP:	Valleys: 52-57° (Little Change)	MAX RH:	Valleys: 90-95% (Little Change)
	Ridgetops: 58-66° (Little Change)		Ridgetops: 50-60% (3-6% ↑)

CHC WTG RAIN: 0% **LAL:** 1 **SFC VIS:** 0.5 mile.

WINDS: **Valleys:** Downslope 2-4 mph.
(20 FEET) **Ridgetops:** Northeast 4-8 mph infrequent gusts to 12 mph.

MIXING HEIGHT: Dropping to 1,500 ft by 0100. **TRANSPORT WIND:** Northeast 5-8 mph.

TUESDAY:

WEATHER: Mostly Clear. Heavy smoke in valleys near the fire with better smoke transport to the east in afternoon.

MAX TEMP:	Valleys: 72-77°F (1-3°F ↑)	MIN RH:	Valleys: 45-55% (5% ↓)
	Ridgetops: 70-75°F (1-3°F ↑)		Ridgetops: 50-60% (5% ↓)

CHC WTG RAIN: 0% **LAL:** 1 **SFC VIS:** 1-2 miles, improving to 3 to 5 miles afternoon

WINDS: **Valleys:** Morning downslope 2-4 mph afternoon upslope 6-12 mph.
(20 feet) **Ridgetops:** Morning north 5-8 mph, afternoon northwest 7-10 mph gusts to 22 mph.

MIXING HEIGHT: Rising to 4,000 ft by 1400. **TRANSPORT WIND:** Northwest 12 mph.

EXTENDED OUTLOOK: Wind shift to the northeast is still expected to begin Tuesday night as a trough moves inland to our north. Winds will remain offshore moving smoke more westward than previous days along with warmer temperatures. Offshore wind pattern weakens by Thursday as another Pacific trough begins to develop off the coast with a return to southwest flow, increased cloud cover and a chance for showers and thunderstorms headed into Friday.

—————→
 Nearby Weather Observations



FIRE BEHAVIOR FORECAST	
Incident Name: SMITH RIVER COMPLEX - SOUTH	Operational Period: Date From: 8/28/23 Date To: 8/29/23 Time From: 0700 Time To: 0700
Forecast Number: 11	Type of Fire: Wildfire
Unit: Six Rivers National Forest - Gasquet District	
INPUTS	
WEATHER SUMMARY: ***See Fire Weather Forecast***	
FUELS SUMMARY: Due to the below normal amount of precipitation, live fuel moisture levels did not fully recover this spring, making the shrubs readily available for consumption. There are snag patches within the fire scars with scabbier fuels; Biscuit (2002), Coon (2015), Bear (2015), Oak (2017) and Slater (2020). The fuel moistures of the manzanita are around 110% and the 1000-hour fuels 9%, below critical levels. The fire scars, including the 2002 Biscuit fire, are a grass and low shrub fuel type (GS2) and have hampered growth of the Corral, Diamond, and western portion of the Kelly fire. Outside of the fire scars, the fuels are dominated by a high load conifer with shrub fuel type (TU5).	
OUTPUTS	
FIRE BEHAVIOR	
GENERAL: We are currently on the tail end of what is peak of fire season for this area of the state. Under smoky conditions, the fire will consume the heavy dead surface fuels with relatively slow rates of spread. Roll-out is a driver of growth in these areas. When the fire is exposed to a stronger wind or gets established on a steep slope with aligned fuels and topography, expect rapid rates of spread with sustained crown runs and moderate range spotting. Take advantage of a few more days of favorable conditions to secure as much of the fires edge as possible before a more adverse weather pattern brings drier conditions and easterly flow over the area in the middle of next week. Fire Danger Indices – 2022 IRPG Page 39 Energy Release Component (ERC): 85th August Average ERC Percentile: 75th 2020 Slater Fire Large growth days (September 10th) - ERC Percentile: 99th Maximum Spotting Distance: 0.2 miles Peak Burn Period (1400 – 2000) - Probability of Ignition (PIG): 40% (shaded), 40% (unshaded)	
SPECIFIC: Branch V: The forecasted weather will keep the opportunity to conduct firing operations to a similar window as yesterday. Be prepared to take advantage when it opens around noon. Given the current conditions and the placement of the fire perimeter on the slope, backing fires with limited intensity and good consumption should be expected. Branch XX: The weather pattern will remain favorable to complete the contingency line from Craigs Creek to the 2015 Coon fire. This section will have limited time to complete and burnout prior to the winds shift to unfavorable Tuesday night through Thursday. The Coon fire has a finger burning up the slope but should remain on the west side of road 405. The Island and Prescott fires continue to show minimal growth as they are burning in the 2017 Oak fire. The western flank of the Hurdy Gurdy will continue to spread west in denser fuels and steep terrain. The eastern flank is burning in a 4,000-acre island of unburned between the Bear and Oak fires. **Night shift**: An inversion should settle in over the fire area around 2200. Most of the fire intensity during the day will be at an elevation below this inversion, limiting fire activity keeping overall fire behavior to a minimum overnight.	
AIR OPERATIONS: Sunrise 0609, Last Light 2025 (Daylength: losing 2 min, 38 sec each day) Smoke and marine layer influence will keep air support limited in the morning, with clearing on the west side later in the day.	
SAFETY: Gravity accumulates towards the bottom of the hill. Pay attention to what is going on above you and avoid parking and working in chutes and drainages.	
Prepared by Fire Behavior Analyst: Nic Elmquist	Signature: <i>Nic Elmquist</i>
Date/Time: 8/27/23 at 1800	

ASSIGNMENT LIST (ICS 204 WF)

CONTROLLED UNCLASSIFIED INFORMATION//BASIC


1. Incident Name:			2. Operational Period:				3. Branch		Division	
SMITH RIVER COMPLEX - SOUTH			Date From: 08/28/23	Date To: 08/29/23			V		A	
			Time From: 0700	Time To: 0700			Page 1 of 1		Alpha	
4. Operations Personnel:										
Operations Section Chief: Scott Grasmick / Nick Cleary(t)				Planning Ops: Tom Himmelrich / Trevor Johnson						
Branch Director: Shaun Craig / Erick D'Amico(t)				Night Ops: Joe Reyes						
Division/Group Supervisor: Rick Dykhouse / Neal McCann(t)				Air Attack:						
5. Resources Assigned:		**Shaded resources below are 24 hour**								
Resource Identifier	ALS	LWD	Leader	Personnel	Request #	Hours	Reporting Location			
HC1 VENTANA IHC		9/4	HAROLD COOK	22	C-32	0700-1900	WARD FIELD CAMP			
HC2IA BLM FOLSOM VETS		8/29	ROGER HOOPER	17	C-6	0700-1900	WARD FIELD CAMP			
TF SNF 2023		8/30	RON SANDLING	18	E-312	0700-1900	WARD FIELD CAMP			
EST6 XSB 1520F		9/6	SCOTT NUNEZ	14	E-314	0700-1900	WARD FIELD CAMP			
ENG3 PVT NATIONAL WILDLAND 142		9/3	JASON DAVIS	3	E-142	0700-1900	WARD FIELD CAMP			
ENG3 PVT SCHOLLS 148		9/3	BRIAN RINGEN	3	E-148	0700-1900	WARD FIELD CAMP			
ENG4 PVT FIRECO 136		9/2	TYLER NAIL	2	E-136	0700-1900	WARD FIELD CAMP			
ENG4 PVT PIERSOL 267		9/6	BRIDGER LARSEN	3	E-267	0700-1900	WARD FIELD CAMP			
ENG6 PVT VALKYRIE 138		9/2	CHARLES REESE	3	E-138	0700-1900	WARD FIELD CAMP			
ENG6 PVT HB FORESTRY 211		9/2	AARON GONZALEZ	3	E-211	0700-1900	WARD FIELD CAMP			
DOZ2 PNF DZ2		9/6	TOM SANCHEZ	2	E-328	0700-1900	WARD FIELD CAMP			
WTT2 PVT NATIONAL 165		9/2	AARON PHILLIPS	2	E-165	0700-1900	WARD FIELD CAMP			
FMOD PAC RIDGELINE 156		9/3	ERNIE ADAMS	2	O-156	0700-1900	WARD FIELD CAMP			
EMPF MORGAN	X	9/6	ROBERT MORGAN	1	O-376	0700-1900	WARD FIELD CAMP			
EMTF(T) AMBRIZ		9/6	MANUEL AMBRIZ	1	O-299	0700-1900	WARD FIELD CAMP			
6. Work Assignments:										
Keep the fire north of Highway 199 and east of County Road 305 in order to protect the natural, cultural, and infrastructure values utilizing dozer and handline, firing where appropriate, and providing holding forces during operations.										
7. Special Instructions:										
-Be aware of retardant avoidance areas, mine shafts and naturally occurring asbestos.										
-Maintain awareness of fire conditions affecting road systems in your area that might be a primary escape route and establish secondary egress to safe area. Ensure trigger points are established and re-evaluated throughout the shift.										
Safety Officer(s) assigned to Division A/Divide & Gasquet Structure Protection: Guadalupe Fernandez										
REMS 1 & 4 assigned to Branch V										
REAFs: Coons, Berg, Clark										
8. Communications										
Name	Ch	Function	Rx Freq	Rx Tone	Tx Freq	Tx Tone	Mode	Notes		
NIFC C3	1	COMMAND	170.4250	(T3) 131.8	168.0750	(T3) 131.8	A	CAMP 6		
NIFC T3	7	TACTICAL	168.6000	(T3) 131.8	168.6000	(T3) 131.8	A			
CALCORD	15	TACTICAL	156.0750	(T6) 156.7	156.0750	(T6) 156.7	A	EMS AIR COORDINATION		
A/G TAC	14	A/G TAC	169.4875	0.0	169.4875	0.0	A	AIR TO GROUND TACTICAL		
AIRGUARD	16	AIRGUARD	168.6250	0.0	168.6250	(T1) 110.9	A	EMERGENCY		
9. Prepared by: Name:			Hudley/Nahas(t)/Sketo(t)/Moreno(t)			RESL				
						Signature: <i>Smoreno</i>				
ICS 204		Date/Time: 8/27/2023 2200			Personnel Count: 96					

NIMS IAP

CONTROLLED UNCLASSIFIED INFORMATION//BASIC

ASSIGNMENT LIST (ICS 204 WF)

CONTROLLED UNCLASSIFIED INFORMATION//BASIC

1. Incident Name: SMITH RIVER COMPLEX - SOUTH		2. Operational Period: Date From: 08/28/23 Date To: 08/29/23 Time From: 0700 Time To: 0700				3. Branch V Page 1 of 2		Division B Bravo	
4. Operations Personnel:									
Operations Section Chief: Scott Grasmick / Nick Cleary(t)					Planning Ops: Tom Himmelrich / Trevor Johnson				
Branch Director: Shaun Craig / Erick D'Amico(t)					Night Ops: Joe Reyes				
Division/Group Supervisor: Jere Classay / Andy Bellar-Mariscal(t)					Air Attack:				
5. Resources Assigned:									
Shaded resources below are 24 hour									
Resource Identifier	ALS	LWD	Leader	Personnel	Request #	Hours	Reporting Location		
HC1 SMITH RIVER IHC		9/7	DOUG DENLING	21	C-63	0700-1900	ICP		
HC2I NLTX SLIDE MOUNTAIN 7		8/30	JOSH HIGGINS	19	C-7	0700-1900	ICP		
HC2I BIA FORT APACHE		9/3	BRIAN QUINTERO	22	C-25	0700-1900	ICP		
HC2 PVT PACIFIC OASIS 24		9/2	CASEY DOWNES	20	C-24	0700-1900	ICP		
HC2 PVT 3B'S FORESTRY		9/6	MICHEAL MARLOW	20	C-60	0700-1900	ICP		
WFM2 EAGLE LAKE WFM		9/6	DANE NESBITT	9	O-383	0700-1900	ICP		
ENG3 PVT NESBITTS 135		9/2	VAS NAIKER	3	E-135	0700-1900	ICP		
ENG4 PVT CONTRACT WATER 113		9/3	MIKE MUSIA	3	E-113	0700-1900	ICP		
ENG4 PVT ARCHER 123		9/2	JAMES HARTER	3	E-123	0700-1900	ICP		
ENG4 PVT FLASHBACK 149		9/3	TREVOR MCWATERS	3	E-149	0700-1900	ICP		
ENG4 PVT J3 205		9/2	CHRIS DESROSIER	3	E-205	0700-1900	ICP		
ENG6 BIA AZFTA E5263		9/8	PETER PAXSON	3	E-395	0700-1900	ICP		
DO22 PVT EVANS BROTHERS 169		9/2	TOM EVANS	2	E-169	0700-1900	ICP		
DO22 PVT LONESTAR 170		9/2	ROBERT ASCHERIN	2	E-170	0700-1900	ICP		
CHP2 PVT SAWTOOTH 225		9/9	EMILY LINDEMOND	3	E-225	0700-1900	ICP		
WTT2 PVT 310 DUST CONTROL 348		9/7	CAMERON MULLINS	2	E-348	0700-1900	ICP		
TFLD POWERS		9/7	BRIAN POWERS	1	O-288	0700-1900	ICP		
TFLD(T) WRENN		9/5	WILLIAM WRENN	1	O-231	0700-1900	ICP		
6. Work Assignments:									
Keep the fire north of Highway 199 and east of County Road 305 in order to protect the natural, cultural, and infrastructure values utilizing dozer and handline, firing where appropriate, and providing holding forces during operations.									
7. Special Instructions:									
-Be aware of retardant avoidance areas, mine shafts and naturally occurring asbestos.									
-Maintain awareness of fire conditions affecting road systems in your area that might be a primary escape route and establish secondary egress to safe area. Ensure trigger points are established and re-evaluated throughout the shift.									
Safety Officers assigned to Division B/D: Ray Franco and Shaun Davis(t)									
REMS 1 & 4 assigned to Branch V									
REAFs: Clark, Stubbs, Siedel, Loose									
8. Communications									
Name	Ch	Function	Rx Freq	Rx Tone	Tx Freq	Tx Tone	Mode	Notes	
NIFC C3	1	COMMAND	170.4250	(T3) 131.8	168.0750	(T3) 131.8	A	CAMP 6	
NIFC T5	9	TACTICAL	166.7750	(T3) 131.8	166.7750	(T3) 131.8	A		
CALCORD	15	TACTICAL	156.0750	(T6) 156.7	156.0750	(T6) 156.7	A	EMS AIR COORDINATION	
A/G TAC	14	A/G TAC	169.4875	0.0	169.4875	0.0	A	AIR TO GROUND TACTICAL	
AIRGUARD	16	AIRGUARD	168.6250	0.0	168.6250	(T1) 110.9	A	EMERGENCY	
9. Prepared by: Name: Hudley/Nahas(t)/Sketo(t)/Moreno(t) RESL									
							Signature: 		
ICS 204		Date/Time: 8/27/2023 2200				Personnel Count: 140			

ASSIGNMENT LIST (ICS 204 WF)

CONTROLLED UNCLASSIFIED INFORMATION//BASIC

1. Incident Name:	2. Operational Period:	3. Branch	Division
SMITH RIVER COMPLEX - SOUTH	Date From: 08/28/23 Date To: 08/29/23 Time From: 0700 Time To: 0700	V	B
4. Operations Personnel:		Page 2 of 2	Bravo

Operations Section Chief: Scott Grasmick / Nick Cleary(t)	Planning Ops: Tom Himmelrich / Trevor Johnson
Branch Director: Shaun Craig / Erick D'Amico(t)	Night Ops: Joe Reyes
Division/Group Supervisor: Jere Classay / Andy Bellar-Mariscal(t)	Air Attack:

5. Resources Assigned:		**Shaded resources below are 24 hour**					
Resource Identifier	ALS	LWD	Leader	Personnel	Request #	Hours	Reporting Location
TFLD(T) ASHER		9/7	MICHEAL ASHER	1	O-289	0700-1900	ICP
HEQB WILSON		9/6	ANDY WILSON	1	O-271	0700-1900	ICP
HEQB(T) NETZ		9/2	PAUL NETZ	1	O-175	0700-1900	ICP
FOBS McCREA		8/30	DAVID McCREA	1	O-159	0700-1900	ICP
FOBS RIVAS		8/30	JEFF RIVAS	1	O-160	0700-1900	ICP
EMPF LOPEZ	X	9/1	MIGUEL LOPEZ	1	O-96	0700-1900	ICP
EMTF STILLMAN		9/10	THOMAS STILLMAN	1	O-431	0700-1900	ICP
EMTF KOJI		9/10	ALEX KOJI	1	O-433	0700-1900	ICP
EMTF GILIO		9/10	MARCO GILIO	1	O-432	0700-1900	ICP

6. Work Assignments:
 Keep the fire north of Highway 199 and east of County Road 305 in order to protect the natural, cultural, and infrastructure values utilizing dozer and handline, firing where appropriate, and providing holding forces during operations.

7. Special Instructions:
 -Be aware of retardant avoidance areas, mine shafts and naturally occurring asbestos.
 -Maintain awareness of fire conditions affecting road systems in your area that might be a primary escape route and establish secondary egress to safe area. Ensure trigger points are established and re-evaluated throughout the shift.
Safety Officers assigned to Division B/D: Shaun Davis(t)
REMS 1 & 4 assigned to Branch V
REAFs: Clark, Stubbs, Siedel, Loose

8. Communications

Name	Ch	Function	Rx Freq	Rx Tone	Tx Freq	Tx Tone	Mode	Notes
NIFC C3	1	COMMAND	170.4250	(T3) 131.8	168.0750	(T3) 131.8	A	CAMP 6
NIFC T5	9	TACTICAL	166.7750	(T3) 131.8	166.7750	(T3) 131.8	A	
CALCORD	15	TACTICAL	156.0750	(T6) 156.7	156.0750	(T6) 156.7	A	EMS AIR COORDINATION
A/G TAC	14	A/G TAC	169.4875	0.0	169.4875	0.0	A	AIR TO GROUND TACTICAL
AIRGUARD	16	AIRGUARD	168.6250	0.0	168.6250	(T1) 110.9	A	EMERGENCY

9. Prepared by: Name: Hudley/Nahas(t)/Sketo(t)/Moreno(t) RESL
 Signature: *Smaleno*
ICS 204 Date/Time: 8/27/2023 2200 Personnel Count: 9

ASSIGNMENT LIST (ICS 204 WF)

CONTROLLED UNCLASSIFIED INFORMATION//BASIC


1. Incident Name: SMITH RIVER COMPLEX - SOUTH		2. Operational Period: Date From: 08/28/23 Date To: 08/29/23 Time From: 0700 Time To: 0700				3. Branch V		Division D	
4. Operations Personnel:						Page 1 of 1		Delta	
Operations Section Chief: Scott Grasmick / Nick Cleary(t)					Planning Ops: Tom Himmelrich / Trevor Johnson				
Branch Director: Shaun Craig / Erick D'Amico(t)					Night Ops: Joe Reyes				
Division/Group Supervisor: Patrick Bye / Scott Roeber(t)					Air Attack:				
5. Resources Assigned:		**Shaded resources below are 24 hour**							
Resource Identifier	ALS	LWD	Leader	Personnel	Request #	Hours	Reporting Location		
HC2 PVT NORTH PACIFIC FORESTRY 96		9/14	JEFF ANDERSON	20	C-50020	0700-1900	ICP		
HC2 PVT JC OROZCO 1		9/2	JAMAL KWIATKOWSKI	20	C-1	0700-1900	ICP		
ENG3 LPF 316		8/29	KYLE ARMSTRONG	5	E-282	0700-1900	ICP		
ENG3 STF 314		PD	ANDREW KAHANA	5	E-357	0700-1900	ICP		
ENG3 PVT TORRES E3		9/2	ADOLFO ESPINO	3	E-218	0700-1900	ICP		
ENG3 PVT J3 258		9/6	WES WALLACE	3	E-258	0700-1900	ICP		
ENG5 PVT MONTROSE 144		9/3	DIEGO ALVAREZ	3	E-144	0700-1900	ICP		
ENG6 PVT SWFS 112		9/3	ROBERT STIGEN	3	E-112	0700-1900	ICP		
ENG6 PVT ADAMS 116		9/2	MILAN TORRES	3	E-116	0700-1900	ICP		
ENG6 PVT J3 CONTRACTING 259		9/6	BEN MYERS	3	E-259	0700-1900	ICP		
WTS1 PVT BERRY 342		9/6	STEVEN BERRY	1	E-342	0700-1900	ICP		
WTT2 PVT SACRAMENTO MTN 163		9/6	RICHARD DAVIS	2	E-163	0700-1900	ICP		
WTT2 PVT DYNAMITE 168		9/3	MICHAEL RUDOLPH	2	E-168	0700-1900	ICP		
CHP2 PVT NORTH ZONE 228		9/3	TRISTAN BRANSON	3	E-228	0700-1900	ICP		
CHP2 PVT TOP NOTCH 305		9/7	JOSHUA DEVORE	3	E-305	0700-1900	ICP		
TFLD ELLSBERRY		9/6	RICHARD ELLSBERRY	1	O-293	0700-1900	ICP		
STEN MADDEN		9/6	CLINT MADDEN	1	O-258	0700-1900	ICP		
EMPF MUNDS	X	9/1	NOAH MUNDS	1	O-91	0700-1900	ICP		
EMTF HAPKE		9/1	MIKE HAPKE	1	O-105	0700-1900	ICP		
6. Work Assignments: Prepare direct and indirect containment lines to keep fire east of the 305 Rd. utilizing direct/indirect lines, firing where appropriate, and providing holding forces during operations.									
7. Special Instructions: -Be aware of retardant avoidance areas, mine shafts and naturally occurring asbestos. Maintain awareness of fire conditions affecting road systems in your area that might be a primary escape route and establish secondary egress to safe area. Ensure trigger points are established and re-evaluated throughout the shift. Safety Officers assigned to Division B/D: Shaun Davis(t) REMS 1 & 4 assigned to Branch V REAFs: Stubbs, Siedel, Loose									
8. Communications									
Name	Ch	Function	Rx Freq	Rx Tone	Tx Freq	Tx Tone	Mode	Notes	
NIFC C3	1	COMMAND	170.4250	(T3) 131.8	168.0750	(T3) 131.8	A	CAMP 6	
NIFC T1	6	TACTICAL	168.0500	(T3) 131.8	168.0500	(T3) 131.8	A		
CALCORD	15	TACTICAL	156.0750	(T6) 156.7	156.0750	(T6) 156.7	A	EMS AIR COORDINATION	
A/G TAC	14	A/G TAC	169.4875	0.0	169.4875	0.0	A	AIR TO GROUND TACTICAL	
AIRGUARD	16	AIRGUARD	168.6250	0.0	168.6250	(T1) 110.9	A	EMERGENCY	
9. Prepared by: Name:		Hudley/Nahas(t)/Sketo(t)/Moreno(t)				RESL			
ICS 204		Date/Time: 8/27/2023 2200				Signature: <i>Smoreno</i>		Personnel Count: 83	

NIMS IAP

CONTROLLED UNCLASSIFIED INFORMATION//BASIC

ASSIGNMENT LIST (ICS 204 WF)

CONTROLLED UNCLASSIFIED INFORMATION//BASIC

1. Incident Name: SMITH RIVER COMPLEX - SOUTH		2. Operational Period: Date From: 08/28/23 Date To: 08/29/23 Time From: 0700 Time To: 0700			3. Branch V		Division GASQUET STR GRP		
4. Operations Personnel:				Page 1 of 2					
Operations Section Chief: Scott Grasmick / Nick Cleary(t)				Planning Ops: Tom Himmelrich / Trevor Johnson					
Branch Director: Shaun Craig / Erick D'Amico(t)				Night Ops: Joe Reyes					
Division/Group Supervisor: Brett Hildebrand/ Michael Shiffrar(t)				Air Attack:					
5. Resources Assigned:		**Shaded resources below are 24 hour**							
Resource Identifier	ALS	LWD	Leader	Personnel	Request #	Hours	Reporting Location		
HC2 PVT LAVA RIVER C-11		9/1	BERTHA CHAVEZ	20	C-23	0700-1900	WARD FIELD CAMP		
HC2 PVT NORTH PACIFIC FORESTRY C-2		8/30	ANDREW KENT	20	C-2	0700-1900	WARD FIELD CAMP		
EST1 XSM 2276A **24hrs**		9/2	MATT SAMSON	22	E-95	0700-0700	WARD FIELD CAMP		
EST3 XME 2150C **24hrs**		9/1	MITCH FRANKLIN	20	E-86	0700-0700	WARD FIELD CAMP		
EST6 OES 2862F **24hrs**		9/2	BROOK BAKER	17	E-224	0700-0700	WARD FIELD CAMP		
EST1 OES 2802A		9/3	JOSE CASTREJON	21	E-241	0700-1900	WARD FIELD CAMP		
EST1 OES 2803A		9/3	JOEL ABELSON	21	E-242	0700-1900	WARD FIELD CAMP		
EST1 OES 5805A		9/4	RAYMOND RUSSELL	21	E-244	0700-1900	WARD FIELD CAMP		
EST6 OES 2861F		8/28	BRIAN METCHO	19	E-270	0700-1900	WARD FIELD CAMP		
ENG1 CRT E-5112		9/3	BEAU SMITH	4	E-451	0700-1900	WARD FIELD CAMP		
ENG4 PVT INBOUND 119		9/2	EVAN RUSSELL	3	E-119	0700-1900	WARD FIELD CAMP		
ENG4 PVT J3 208		9/9	JOSE ARIZMENDI	3	E-208	0700-1900	WARD FIELD CAMP		
ENG4 PVT J3 210		9/9	ANDRE KELLEY	3	E-210	0700-1900	WARD FIELD CAMP		
ENG4 PVT WILDFIRE 219		9/2	MIKE FOSTER	3	E-219	0700-1900	WARD FIELD CAMP		
ENG4 PVT TORRES CONT 403		9/8	JAMES VALDEZ	4	E-403	0700-1900	WARD FIELD CAMP		
ENG5 PVT FORREST 248		9/3	AARON VELA	3	E-248	0700-1900	WARD FIELD CAMP		
ENG6 PVT Y2 124		9/3	STANLEY VINCENT	3	E-124	0700-1900	WARD FIELD CAMP		
ENG6 PVT TIMBERLINE 140		9/3	JEROME ANTONIO	3	E-140	0700-1900	WARD FIELD CAMP		
6. Work Assignments: Keep the fire north of Highway 199 and east of County Road 305 in order to protect the natural, cultural, and infrastructure values utilizing dozer and handline, firing where appropriate, and providing holding forces during operations. Prepare and defend structures in Highway 199 corridor and adjacent communities. Conduct damage assessment in areas that the fire has impacted.									
7. Special Instructions: -Be aware of retardant avoidance areas, mine shafts and naturally occurring asbestos. -Maintain awareness of fire conditions affecting road systems in your area that might be a primary escape route and establish secondary egress to safe area. Ensure trigger points are established and re-evaluated throughout the shift. Safety Officer(s) assigned to Division A/Divide & Gasquet Structure Protection: Guadalupe Fernandez REMS 1 & 4 assigned to Branch V									
8. Communications									
Name	Ch	Function	Rx Freq	Rx Tone	Tx Freq	Tx Tone	Mode	Notes	
NIFC C3	1	COMMAND	170.4250	(T3) 131.8	168.0750	(T3) 131.8	A	CAMP 6	
VFIRE 24	12	TACTICAL	154.2725	(T6) 156.7	154.2725	(T6) 156.7	A	GASQUET STR GROUP/INIG	
CALCORD	15	TACTICAL	156.0750	(T6) 156.7	156.0750	(T6) 156.7	A	EMS AIR COORDINATION	
A/G TAC	14	A/G TAC	169.4875	0.0	169.4875	0.0	A	AIR TO GROUND TACTICAL	
AIRGUARD	16	AIRGUARD	168.6250	0.0	168.6250	(T1) 110.9	A	EMERGENCY	
9. Prepared by: Name:		Hudley/Nahas(t)/Sketo(t)/Moreno(t)			RESL		Signature: 		
ICS 204		Date/Time: 8/27/2023 2200			Personnel Count: 210				

NIMS IAP

CONTROLLED UNCLASSIFIED INFORMATION//BASIC


ASSIGNMENT LIST (ICS 204 WF)

CONTROLLED UNCLASSIFIED INFORMATION//BASIC

1. Incident Name: SMITH RIVER COMPLEX - SOUTH		2. Operational Period: Date From: 08/28/23 Date To: 08/29/23 Time From: 0700 Time To: 0700				3. Branch XX		Division MM	
4. Operations Personnel:						Page 1 of 2		Mike-Mike	
Operations Section Chief: Scott Grasmick / Nick Cleary(t)				Planning Ops: Tom Himmelrich / Trevor Johnson					
Branch Director: Joe Tieso				Night Ops: Joe Reyes					
Division/Group Supervisor: Ron Oatman / Josh Fudge(t)				Air Attack:					
5. Resources Assigned:		**Shaded resources below are 24 hour**							
Resource Identifier	ALS	LWD	Leader	Personnel	Request #	Hours	Reporting Location		
HC2 PVT NORTH PACIFIC FORESTRY C1		9/8	ALEX GALICIA	20	C-57	0700-1900	WARD FIELD CAMP		
HC2 PVT LAVA RIVER 58		9/5	WILL CONTREAS	20	C-58	0700-1900	WARD FIELD CAMP		
HC2 PVT BIG BARK 59		9/7	CHESTER FULBRIG	20	C-59	0700-1900	WARD FIELD CAMP		
HC2 PVT ALTA PACIFIC C-7		9/7	JOSE TORRES	20	C-61	0700-1900	WARD FIELD CAMP		
ENG3 SQF 31		8/30	JOSE RIVIERA	5	E-281	0700-1900	WARD FIELD CAMP		
ENG3 GENESEE FIRE 932		8/30	JOSH BOYLES	5	E-1	0700-1900	WARD FIELD CAMP		
ENG3 PVT OUTBACK 249		8/30	JARED ANDRA	3	E-249	0700-1900	WARD FIELD CAMP		
ENG4 PVT IDAHO TRAILBLAZERS 159		9/1	OSVALDO ARENAS	3	E-159	0700-1900	WARD FIELD CAMP		
ENG4 PVT TETON 221		9/3	CASSY JOHNSON	4	E-221	0700-1900	WARD FIELD CAMP		
ENG6 WHISPERING PINES E66		8/30	GABE DONNEY	3	E-280	0700-1900	WARD FIELD CAMP		
ENG6 PVT FIRST STRIKE 118		9/2	JEFF PURITT	3	E-118	0700-1900	WARD FIELD CAMP		
ENG6 PVT IDAHO TRAILBLAZERS 160		9/2	EDDY GARCIA	3	E-160	0700-1900	WARD FIELD CAMP		
ENG6 PVT IMPERIA FORESTRY 203		9/2	LUCIANO GONZALEZ	3	E-203	0700-1900	WARD FIELD CAMP		
ENG6 PVT BLACKSTONE 354		9/6	JORDAN JESSEE	3	E-354	0700-1900	WARD FIELD CAMP		
WTT2 PVT 5J WATER 161		9/2	KEELY JACKSON	2	E-161	0700-1900	WARD FIELD CAMP		
WTT2 PVT LOOMIS 344		9/8	JEAN LOOMIS	2	E-344	0700-1900	WARD FIELD CAMP		
WTT2 PVT GREAT BASIN 345		9/9	GENE HANCOCK	2	E-345	0700-1900	WARD FIELD CAMP		
DOZ2 STF 52		9/3	MIKE KNOTT	2	E-223	0700-1900	WARD FIELD CAMP		
DOZ2 PVT KENNETH 294		9/5	KENNY DREW	2	E-294	0700-1900	WARD FIELD CAMP		
DOZ2 PVT SMOKEY MTN 173		9/2	IKE TOMLINSON	2	E-173	0700-1900	WARD FIELD CAMP		
GRD1 PVT LET-ER-BUCK 288		9/5	STEVE LASSEN	2	E-288	0700-1900	WARD FIELD CAMP		
6. Work Assignments: Keep the fire South of Highway 199 in order to protect the natural, cultural, and infrastructure values utilizing dozer and handline, firing where appropriate, and providing holding forces during operations. Conduct damage assessment in areas that the fire has impacted. Continue to coordinate operations with PNW Branch VIII Div K.									
7. Special Instructions: -Be aware of retardant avoidance areas, mine shafts and naturally occurring asbestos. -Maintain awareness of fire conditions affecting road systems in your area that might be a primary escape route and establish secondary egress to safe area. Ensure trigger points are established and re-evaluated throughout the shift. Safety Officers assigned to Division MM: Bryon Shropshire REMS 2, 3, & 5 are assigned to Branch XX REAF Leonard, Toner									
8. Communications									
Name	Ch	Function	Rx Freq	Rx Tone	Tx Freq	Tx Tone	Mode	Notes	
NIFC C3	1	COMMAND	170.4250	(T3) 131.8	168.0750	(T3) 131.8	A	CAMP 6	
NIFC T4	8	TACTICAL	166.7250	(T3) 131.8	166.7250	(T3) 131.8	A		
CALCORD	15	TACTICAL	156.0750	(T6) 156.7	156.0750	(T6) 156.7	A	EMS AIR COORDINATION	
A/G TAC	14	A/G TAC	169.4875	0.0	169.4875	0.0	A	AIR TO GROUND TACTICAL	
AIRGUARD	16	AIRGUARD	168.6250	0.0	168.6250	(T1) 110.9	A	EMERGENCY	
9. Prepared by: Name:		Hudley/Nahas(t)/Sketo(t)/Moreno(t)			RESL		Signature: <i>Smoreno</i>		
ICS 204		Date/Time: 8/27/2023			2200		Personnel Count: 129		

ASSIGNMENT LIST (ICS 204 WF)

CONTROLLED UNCLASSIFIED INFORMATION//BASIC

1. Incident Name:		2. Operational Period:				3. Branch		Division	
SMITH RIVER COMPLEX - SOUTH		Date From: 08/28/23	Date To: 08/29/23	Time From: 0700	Time To: 0700	XX		MM	
4. Operations Personnel:						Page 2 of 2		Mike-Mike	
Operations Section Chief: Scott Grasmick / Nick Cleary(t)				Planning Ops: Tom Himmelrich / Trevor Johnson					
Branch Director: Joe Tieso				Night Ops: Joe Reyes					
Division/Group Supervisor: Ron Oatman / Josh Fudge(t)				Air Attack:					
5. Resources Assigned:		**Shaded resources below are 24 hour**							
Resource Identifier	ALS	LWD	Leader	Personnel	Request #	Hours	Reporting Location		
EXC2 PVT SMOKEY MTN 301		9/7	BRIGGS TOMLINSON	2	E301	0700-1900	WARD FIELD CAMP		
CHP2 PVT NORTH ZONE 227		9/3	DARRIUS DEMERY	3	E-227	0700-1900	WARD FIELD CAMP		
CHP2 PVT SAYLOR 302		9/7	CALEB FINK	3	E-302	0700-1900	WARD FIELD CAMP		
CHP2 PVT PACIFIC RIDGELINE 303		9/7	JONATHAN CAMPBELL	3	E-303	0700-1900	WARD FIELD CAMP		
FMOD MOEN FALLERS 116		9/1	MICHEAL MOEN	2	O-116	0700-1900	WARD FIELD CAMP		
FMOD CHARLIE FALLERS 117		9/1	JOSIAH CLAYBORN	2	O-117	0700-1900	WARD FIELD CAMP		
FMOD CHARLIE FALLERS 154		9/1	DAN KECK	2	O-154	0700-1900	WARD FIELD CAMP		
TFLD MIRANDA		9/2	MATT MIRANDA	1	O-173	0700-1900	WARD FIELD CAMP		
TFLD(T) KOEPENICK		9/7	NICK KOEPENICK	1	O-362	0700-1900	WARD FIELD CAMP		
TFLD(T) LOWERY		9/6	SEAN LOWERY	1	O-295	0700-1900	WARD FIELD CAMP		
STEN BARKER		9/5	JASON BARKER	1	O-251	0700-1900	WARD FIELD CAMP		
STEN BRISTOL		9/6	NATHAN BRISTOL	1	O-256	0700-1900	WARD FIELD CAMP		
STEN(T) EISAN		9/5	NICK EISAN	1	O-253	0700-1900	WARD FIELD CAMP		
STEN(T) HANNAN		9/6	JOSHUA HANNAN	1	O-357	0700-1900	WARD FIELD CAMP		
HEQB FAWCETT		9/6	DANIEL FAWCETT	1	O-238	0700-1900	WARD FIELD CAMP		
HEQB MOONEY		9/8	AARON MOONEY	1	O-270	0700-1900	WARD FIELD CAMP		
EMPF HARDINA	X	9/1	BRANDON HARDINA	1	O-100	0700-1900	WARD FIELD CAMP		
EMPF KORTEKAAS	X	9/1	JOSHUA KORTEKAAS	1	O-99	0700-1900	WARD FIELD CAMP		
6. Work Assignments:									
Keep the fire South of Highway 199 in order to protect the natural, cultural, and infrastructure values utilizing dozer and handline, firing where appropriate, and providing holding forces during operations. Conduct damage assessment in areas that the fire has impacted. Continue to coordinate operations with PNW Branch VIII Div K.									
7. Special Instructions:									
-Be aware of retardant avoidance areas, mine shafts and naturally occurring asbestos.									
-Maintain awareness of fire conditions affecting road systems in your area that might be a primary escape route and establish secondary egress to safe area. Ensure trigger points are established and re-evaluated throughout the shift.									
Safety Officers assigned to Division MM: Bryon Shropshire									
REMS 2, 3, & 5 are assigned to Branch XX									
REAF Leonard, Toner									
8. Communications									
Name	Ch	Function	Rx Freq	Rx Tone	Tx Freq	Tx Tone	Mode	Notes	
NIFC C3	1	COMMAND	170.4250	(T3) 131.8	168.0750	(T3) 131.8	A	CAMP 6	
NIFC T4	8	TACTICAL	166.7250	(T3) 131.8	166.7250	(T3) 131.8	A		
CALCORD	15	TACTICAL	156.0750	(T6) 156.7	156.0750	(T6) 156.7	A	EMS AIR COORDINATION	
A/G TAC	14	A/G TAC	169.4875	0.0	169.4875	0.0	A	AIR TO GROUND TACTICAL	
AIRGUARD	16	AIRGUARD	168.6250	0.0	168.6250	(T1) 110.9	A	EMERGENCY	
9. Prepared by: Name:		Hudley/Nahas(t)/Sketo(t)/Moreno(t)			RESL		Signature: 		
ICS 204		Date/Time: 8/27/2023 2200			Personnel Count: 28				

ASSIGNMENT LIST (ICS 204 WF)

CONTROLLED UNCLASSIFIED INFORMATION//BASIC

1. Incident Name: SMITH RIVER COMPLEX - SOUTH		2. Operational Period: Date From: 08/28/23 Date To: 08/29/23 Time From: 0700 Time To: 0700				3. Branch XX		Division PP	
4. Operations Personnel:						Page 1 of 1		Papa-Papa	
Operations Section Chief: Scott Grasmick / Nick Cleary(t)					Planning Ops: Tom Himmelrich / Trevor Johnson				
Branch Director: Joe Tieso					Night Ops: Joe Reyes				
Division/Group Supervisor: Corey Stowe / Jason Falarski(t)					Air Attack:				
5. Resources Assigned:		**Shaded resources below are 24 hour**							
Resource Identifier	ALS	LWD	Leader	Personnel	Request #	Hours	Reporting Location		
HCS1 ORC 1418G		9/7	BRADEN DAVIS	27	C-39	0700-1900	WARD FIELD CAMP		
HC2I PVT PATRICK 67		9/9	LEVI MILLER	20	C-67	0700-1900	WARD FIELD CAMP		
ENG3 SRF E312		8/28	ERIC JOHNSON	5	E-464	0700-1900	WARD FIELD CAMP		
ENG3 PVT CASCADIA FIRE E-364		9/2	JONATHAN PAUL	3	E-111	0700-1900	WARD FIELD CAMP		
ENG3 PVT HI COUNTRY 246		9/3	BRIAN BURNETTE	3	E-246	0700-1900	WARD FIELD CAMP		
ENG3 SHF E343		9/8	CHRISTOPHER GRAHAM	5	E-441	0700-1900	WARD FIELD CAMP		
ENG16 PVT RX FIRE 152		9/4	ERIK KROL	3	E-152	0700-1900	WARD FIELD CAMP		
ENG6 PVT ABRAHAM 202		9/2	ZAC JONES	3	E-202	0700-1900	WARD FIELD CAMP		
ENG6 PVT ROCKY MTN E1		9/2	MICHAEL SAIVILLE	3	E-207	0700-1900	WARD FIELD CAMP		
ENG6 PVT RED TRUCK 66		9/2	NICK CARNEY	3	E-156	0700-1900	WARD FIELD CAMP		
DOZ2 ANF DOZ12		9/8	DOUGLAS LANDER	2	E-297	0700-1900	WARD FIELD CAMP		
DOZ2 PVT MORRISON 296		9/7	MATTHEW MORRISON	2	E-296	0700-1900	WARD FIELD CAMP		
EXC1 PVT LONESTAR 299		9/7	CASEY MOORE	2	E-299	0700-1900	WARD FIELD CAMP		
WTT2 AZ SUNSITES TT304		9/9	MARK BONIN	2	E-379	0700-1900	WARD FIELD CAMP		
TFLD(T) MOLINA		9/6	ROBERT MOLINA	1	O-292	0700-1900	WARD FIELD CAMP		
EMPF FRITCHLE	X	9/2	NATHAN FRITCHLE	1	O-98	0700-1900	WARD FIELD CAMP		
EMTF WEST		9/2	BRANDON WEST	1	O-106	0700-1900	WARD FIELD CAMP		
6. Work Assignments: Prep proposed primary and contingency lines to prevent movement of the Hurdy Gurdy fire. Mop up 100' and hold existing containment lines.									
7. Special Instructions: -Be aware of retardant avoidance areas, mine shafts and naturally occurring asbestos. -Maintain awareness of fire conditions affecting road systems in your area that might be a primary escape route and establish secondary egress to safe area. Ensure trigger points are established and re-evaluated throughout the shift. Safety Officer(s) assigned to Division PP/VV: Ray Franco REMS 2,3 & 5 assigned to Branch XX. EMPF Klein assigned to REMS 5. REAF Leonard, Toner, Coons, Berg									
B. Communications									
Name	Ch	Function	Rx Freq	Rx Tone	Tx Freq	Tx Tone	Mode	Notes	
NIFC C3	1	COMMAND	170.4250	(T3) 131.8	168.0750	(T3) 131.8	A	CAMP 6	
NIFC T5	9	TACTICAL	166.7750	(T3) 131.8	166.7750	(T3) 131.8	A		
CALCORD	15	TACTICAL	156.0750	(T6) 156.7	156.0750	(T6) 156.7	A	EMS AIR COORDINATION	
A/G TAC	14	A/G TAC	169.4875	0.0	169.4875	0.0	A	AIR TO GROUND TACTICAL	
AIRGUARD	16	AIRGUARD	168.6250	0.0	168.6250	(T1) 110.9	A	EMERGENCY	
9. Prepared by: Name:			Hudley/Nahas(t)/Sketo(t)/Moreno(t)			RESL			
						Signature:			
ICS 204		Date/Time: 8/27/2023 2200			Personnel Count: 86				

NIMS IAP

CONTROLLED UNCLASSIFIED INFORMATION//BASIC

ASSIGNMENT LIST (ICS 204 WF)

CONTROLLED UNCLASSIFIED INFORMATION//BASIC

1. Incident Name:	2. Operational Period:	3. Branch	Division
SMITH RIVER COMPLEX - SOUTH	Date From: 08/28/23 Date To: 08/29/23 Time From: 0700 Time To: 0700	XX	VV

4. Operations Personnel: Page 1 of 3 Victor-Victor

Operations Section Chief: Scott Grasmick / Nick Cleary(t) Branch Director: Joe Tieso Division/Group Supervisor: Michael Willardson / Kevin Montoya(t)	Planning Ops: Tom Himmelrich / Trevor Johnson Night Ops: Joe Reyes Air Attack:
--	--

5. Resources Assigned: **Shaded resources below are 24 hour**

Resource Identifier	ALS	LWD	Leader	Personnel	Request #	Hours	Reporting Location
HCS1 LAC ST1170G		9/7	ROB MORALES	25	C-40	0700-1900	WARD FIELD CAMP
HC1 PNF BECKWOURTH IHC		9/8	MIKE WINTCH	21	C-45	0700-1900	WARD FIELD CAMP
HC2 PVT PACIFIC OASIS 15		9/3	ALEX HESS	20	C-15	0700-1900	WARD FIELD CAMP
HC2 PVT PONDEROSA 54		9/7	SAUL BECCERA	20	C-54	0700-1900	WARD FIELD CAMP
HC2 PVT THREE STRIPES 55		9/7	MELECIO CONTRER	20	C-55	0700-1900	WARD FIELD CAMP
HC2 PVT GFP ENT 56		9/7	MITCHELL ELSTAD	20	C-56	0700-1900	WARD FIELD CAMP
EST6 OES 6805F	X	8/28	ROBERT PETERSON	18	E-271	0700-1900	WARD FIELD CAMP
ENG3 PVT ALPINE WF E-7		9/2	LEIF LARSON	3	E-220	0700-1900	WARD FIELD CAMP
ENG3 PVT ALPINE WF E-8		9/2	STEVEN VIGIL	3	E-121	0700-1900	WARD FIELD CAMP
ENG3 SNF E352		9/9	STEPHAN OSMOND	5	E-445	0700-1900	WARD FIELD CAMP
ENG3 PVT SABINO 134		9/3	BRYAN CARDENAS	3	E-134	0700-1900	WARD FIELD CAMP
ENG4 PVT ID HEATSEEKER 233		9/3	HEATH ORABANEC	3	E-233	0700-1900	WARD FIELD CAMP
ENG4 PVT ID HEATSEEKER 234		9/3	AUSTIN WELLS	3	E-234	0700-1900	WARD FIELD CAMP
ENG4 PVT TANGO KILO 122		9/3	DON BEARD	3	E-122	0700-1900	WARD FIELD CAMP
ENG4 BLM IDTFD E2413		9/3	RAD KULASEVIC	5	E-251	0700-1900	WARD FIELD CAMP
ENG4 PVT PALLAS 133		9/3	FRED AVILA	3	E-133	0700-1900	WARD FIELD CAMP
ENG5 PVT RATTLESNAKE 209		9/2	RICHARD OROSCO	3	E-209	0700-1900	WARD FIELD CAMP
ENG5 PVT DB JET 127		9/3	PHILLIP CRISTIE	3	E-127	0700-1900	WARD FIELD CAMP
ENG5 PVT 3 RIVERS 137		9/4	MURRAY HANNAWEEKA	3	E-137	0700-1900	WARD FIELD CAMP
ENG5 PVT WINTERS 401		9/8	LARRY WINTERS	3	E-401	0700-1900	WARD FIELD CAMP
ENG5 PVT GCT LAND 2		9/5	ROBERT MCGIRR	3	E-2	0700-1900	WARD FIELD CAMP
ENG6 PVT WINDSWEPT 402		9/8	DAVID MARIK	3	E-402	0700-1900	WARD FIELD CAMP
ENG6 PVT WINDSWEPT 402		9/8	DAVID MARIK	3	E-402	0700-1900	WARD FIELD CAMP

6. Work Assignments:
 Keep the fire South of Highway 199 and East of the South Fork/G-O roads in order to protect the natural, cultural, and infrastructure values utilizing dozer and handline, firing where appropriate, and providing holding forces during operations.

7. Special Instructions:
 -Be aware of retardant avoidance areas, mine shafts and naturally occurring asbestos.
 -Maintain awareness of fire conditions affecting road systems in your area that might be a primary escape route and establish secondary egress to safe area. Ensure trigger points are established and re-evaluated throughout the shift.
 Safety Officer(s) assigned to Division PP/VV: Ray Franco
 REMS 2,3 & 5 assigned to Branch XX.
 REAF Meingast, Chestnut, Coons, Berg

8. Communications

Name	Ch	Function	Rx Freq	Rx Tone	Tx Freq	Tx Tone	Mode	Notes
NIFC C3	1	COMMAND	170.4250	(T3) 131.8	168.0750	(T3) 131.8	A	CAMP 6
NIFC T6	10	TACTICAL	168.2500	(T3) 131.8	168.2500	(T3) 131.8	A	
CALCORD	15	TACTICAL	156.0750	(T6) 156.7	156.0750	(T6) 156.7	A	EMS AIR COORDINATION
A/G TAC	14	A/G TAC	169.4875	0.0	169.4875	0.0	A	AIR TO GROUND TACTICAL
AIRGUARD	16	AIRGUARD	168.6250	0.0	168.6250	(T1) 110.9	A	EMERGENCY

9. Prepared by: Name: Hudley/Nahas(t)/Sketo(t)/Moreno(t) RESL
 Signature: _____

ICS 204 Date/Time: 8/27/2023 2200 Personnel Count: 196

ASSIGNMENT LIST (ICS 204 WF)

CONTROLLED UNCLASSIFIED INFORMATION//BASIC

1. Incident Name: SMITH RIVER COMPLEX - SOUTH	2. Operational Period: Date From: 08/28/23 Date To: 08/29/23 Time From: 0700 Time To: 0700	3. Branch XX	Division VV
--	---	-------------------------------	------------------------------


4. Operations Personnel:		Page 2 of 3	Victor-Victor
Operations Section Chief: Scott Grasmick / Nick Cleary(t)	Planning Ops: Tom Himmelrich / Trevor Johnson		
Branch Director: Joe Tieso	Night Ops: Joe Reyes		
Division/Group Supervisor: Michael Willardson / Kevin Montoya(t)	Air Attack:		

5. Resources Assigned:							
Shaded resources below are 24 hour							
Resource Identifier	ALS	LWD	Leader	Personnel	Request #	Hours	Reporting Location
ENG6 PVT PINO ONE 145		9/4	DARREN PINO	3	E-145	0700-1900	WARD FIELD CAMP
ENG6 PVT AMERICAN 151		9/2	LOUIS LIPHART	3	E-151	0700-1900	WARD FIELD CAMP
ENG6 UTSWS E664		9/8	LUCAS TWITCHELL	5	E-397	0700-1900	WARD FIELD CAMP
ENG6 PVT PACIFIC NW 237		9/3	RAMON IBARRA	3	E-237	0700-1900	WARD FIELD CAMP
ENG6 PVT AAA THUNDER 115		9/2	LOGAN CATES	3	E-115	0700-1900	WARD FIELD CAMP
ENG6 PVT CRIDDLE 206		9/2	PAUL CRIDDLE	3	E-206	0700-1900	WARD FIELD CAMP
ENG6 PVT ID HEATSEEKER 235		9/3	WENDY JOHNSON	3	E-235	0700-1900	WARD FIELD CAMP
ENG6 PVT ID HEATSEEKER 236		9/3	JEEP DARRAH	3	E-236	0700-1900	WARD FIELD CAMP
ENG6 PVT DARE ENT 245		9/3	COOPER BERRY	3	E-245	0700-1900	WARD FIELD CAMP
ENG6 PVT FLORES 400		9/9	DANNY ROGERS	3	E-400	0700-1900	WARD FIELD CAMP
ENG6 PVT BIG STATE WILDFIRE		9/10	RONNIE OUIMETTE	3	O-404	0700-1900	WARD FIELD CAMP
ENG3 BLM 6330		9/9	BRYAN DIAZ	5	E-444	0700-1900	WARD FIELD CAMP
DZS2 XFR 5001L		9/9	JARED KRUM	6	E-343	0700-1900	WARD FIELD CAMP
DOZ2 BDF D23		9/9	COLBY CHRISTNER	4	E-394	0700-1900	WARD FIELD CAMP
DOZ2 PVT JUNGWORTH 171		9/2	PETE BROWN	2	E-171	0700-1900	WARD FIELD CAMP
DOZ2 PVT GENERAL EXC 295		9/7	RAYMOND BEAIRST	2	E-295	0700-1900	WARD FIELD CAMP
MBM2 PVT BELL ENT 229		9/8	BRIAN BELL	2	E-229	0700-1900	WARD FIELD CAMP
MBM2 PVT LAP CONT 333		9/9	H. HUNT	2	E-333	0700-1900	WARD FIELD CAMP
WTT2 MNF T2-258		9/9	MATTHEW ADAMS	1	E-375	0700-1900	WARD FIELD CAMP
WTT2 PVT NATIONAL 165		9/2	AARON PHILLIPS	2	E-165	0700-1900	WARD FIELD CAMP

6. Work Assignments:
Keep the fire South of Highway 199 and East of the South Fork/G-O roads in order to protect the natural, cultural, and infrastructure values utilizing dozer and handline, firing where appropriate, and providing holding forces during operations.

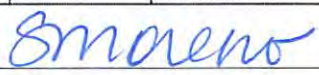
7. Special Instructions:
-Be aware of retardant avoidance areas, mine shafts and naturally occurring asbestos.
-Maintain awareness of fire conditions affecting road systems in your area that might be a primary escape route and establish secondary egress to safe area. Ensure trigger points are established and re-evaluated throughout the shift.
Safety Officer(s) assigned to Division PP/VV: Ray Franco
REMS 2,3 & 5 assigned to Branch XX.
REAF Meingast, Chestnut, Coons, Berg

8. Communications								
Name	Ch	Function	Rx Freq	Rx Tone	Tx Freq	Tx Tone	Mode	Notes
NIFC C3	1	COMMAND	170.4250	(T3) 131.8	168.0750	(T3) 131.8	A	CAMP 6
NIFC T6	10	TACTICAL	168.2500	(T3) 131.8	168.2500	(T3) 131.8	A	
CALCORD	15	TACTICAL	156.0750	(T6) 156.7	156.0750	(T6) 156.7	A	EMS AIR COORDINATION
A/G TAC	14	A/G TAC	169.4875	0.0	169.4875	0.0	A	AIR TO GROUND TACTICAL
AIRGUARD	16	AIRGUARD	168.6250	0.0	168.6250	(T1) 110.9	A	EMERGENCY

9. Prepared by: Name: Hudley/Nahas(t)/Sketo(t)/Moreno(t) RESL
Signature: 
ICS 204 Date/Time: 8/27/2023 2200 Personnel Count: 61

ASSIGNMENT LIST (ICS 204 WF)

CONTROLLED UNCLASSIFIED INFORMATION//BASIC


1. Incident Name: SMITH RIVER COMPLEX - SOUTH		2. Operational Period: Date From: 08/28/23 Date To: 08/29/23 Time From: 0700 Time To: 0700				3. Branch XX		Division YY	
4. Operations Personnel:						Page 1 of 2		Yankee-Yankee	
Operations Section Chief: Scott Grasmick / Nick Cleary(t)					Planning Ops: Tom Himmelrich / Trevor Johnson				
Branch Director: Joe Tieso					Night Ops: Joe Reyes				
Division/Group Supervisor: Todd McNeal / Kelth McMillen(t)					Air Attack:				
5. Resources Assigned:		**Shaded resources below are 24 hour**							
Resource Identifier	ALS	LWD	Leader	Personnel	Request #	Hours	Reporting Location		
HC1 TAHOE IHC		9/3	GERMAN GUERRERO	21	C-28	0700-1900	WARD FIELD CAMP		
HC2I SQF BLACK EAGLES		9/5	GUSTAVO SANTOYO	21	C-33	0700-1900	WARD FIELD CAMP		
HC2I KRN GOLDEN EMPIRE C10		9/6	NATHANIEL PREST	25	C-34	0700-1900	WARD FIELD CAMP		
HC2I BLM ARAVAIPA IHC		9/9	WADE IRISH	21	C-43	0700-1900	WARD FIELD CAMP		
HC2 PVT WEST COAST 16		9/3	JUAN RAMOS	20	C-16	0700-1900	WARD FIELD CAMP		
HC2 PVT BLUE MOUNTAIN 5		9/2	JUAN ESPINOSA	20	C-5	0700-1900	WARD FIELD CAMP		
TF TNF 4662		9/8	RYAN HERRERA	24	E-366	0700-1900	WARD FIELD CAMP		
ENG1 GASQUET E-75		8/28	WALTER FRYE	5	E-448	0700-1900	WARD FIELD CAMP		
ENG6 PVT KL FARMS E-02		9/2	STEPHEN TRAIN	3	E-120	0700-1900	WARD FIELD CAMP		
ENG6 PVT KL FARMS E-13		9/2	IAN SHELLY	3	E-147	0700-1900	WARD FIELD CAMP		
ENG6 PVT PIERCE FIRE 158		9/1	JORDAN HOEFLING	3	E-158	0700-1900	WARD FIELD CAMP		
ENG6 PVT GE FORESTRY 204		9/2	ARMANDO TOBAR	3	E-204	0700-1900	WARD FIELD CAMP		
ENG6 PVT TETON 222		9/3	RYAN TURNER	4	E-222	0700-1900	WARD FIELD CAMP		
WTT2 ANF WT-34		9/8	ALAN MARQUEZ	2	E-346	0700-1900	WARD FIELD CAMP		
WTT2 GASQUET WT76		8/28	GUY LATHAM	2	E-449	0700-1900	WARD FIELD CAMP		
DOZ2 PVT LEESVILLE 293		9/4	NATE RUBINI	2	E-293	0700-1900	WARD FIELD CAMP		
MBM2 PVT ZEB'S TREE 335		9/7	RON WAKE	2	E-335	0700-1900	WARD FIELD CAMP		
MBM2 PVT NORTHSTATE 230		9/4	TYLER WAITS	2	E-230	0700-1900	WARD FIELD CAMP		
6. Work Assignments: Keep the fire South of Highway 199 and East of the South Fork/G-O roads in order to protect the natural, cultural, and infrastructure values utilizing dozer and handline, firing where appropriate, and providing holding forces during operations.									
7. Special Instructions: -Be aware of retardant avoidance areas, mine shafts and naturally occurring asbestos. -Maintain awareness of fire conditions affecting road systems in your area that might be a primary escape route and establish secondary egress to safe area. Ensure trigger points are established and re-evaluated throughout the shift. Safety Officer(s) assigned to Division YY: Pat Cockrum REMS 2, 3 & 5 assigned to Branch XX. REAFs: Meingast, Chestnut									
8. Communications									
Name	Ch	Function	Rx Freq	Rx Tone	Ix Freq	Ix Tone	Mode	Notes	
NIFC C3	1	COMMAND	170.4250	(T3) 131.8	168.0750	(T3) 131.8	A	CAMP 6	
VFIRE 22	11	TACTICAL	154.2650	(T6) 156.7	154.2650	(T6) 156.7	A		
CALCORD	15	TACTICAL	156.0750	(T6) 156.7	156.0750	(T6) 156.7	A	EMS AIR COORDINATION	
A/G TAC	14	A/G TAC	169.4875	0.0	169.4875	0.0	A	AIR TO GROUND TACTICAL	
AIRGUARD	16	AIRGUARD	168.6250	0.0	168.6250	(T1) 110.9	A	EMERGENCY	
9. Prepared by: Name:			Hudley/Nahas(t)/Sketo(t)/Moreno(t)			RESL			
						Signature: 			
ICS 204		Date/Time: 8/27/2023 2200			Personnel Count: 183				

NIMS IAP

CONTROLLED UNCLASSIFIED INFORMATION//BASIC

ASSIGNMENT LIST (ICS 204 WF)

CONTROLLED UNCLASSIFIED INFORMATION//BASIC

1. Incident Name:			2. Operational Period:				3. Branch		Division	
SMITH RIVER COMPLEX - SOUTH			Date From: 08/28/23	Date To: 08/29/23			NIGHT STR GRP			
			Time From: 0700	Time To: 0700			Page 1 of 1			
4. Operations Personnel:										
Operations Section Chief: Scott Grasmick / Nick Cleary(t)						Planning Ops: Tom Himmelrich / Trevor Johnson				
Branch Director:						Night Ops: Joe Reyes				
Division/Group Supervisor: Ryan Edmondson / Jonathan Cripe(t)						Air Attack:				
5. Resources Assigned:			**Shaded resources below are 24 hour**							
Resource Identifier	ALS	LWD	Leader	Personnel	Request #	Hours	Reporting Location			
HC2 PVT PONDEROSA 53		9/7	SERGIO BENCOMO	20	C-53	1900-0700	ICP			
EST3 ANF 1605C		9/7	SALVADOR CORTEZ	26	E-381	1900-0700	ICP			
ENG3 PVT HEATSEEKER 131		9/4	JACOB MACDONALD	3	E-131	1900-0700	ICP			
ENG4 PVT GRIZ ONE 126		9/4	CORY TABER	3	E-126	1900-0700	ICP			
ENG4 PVT BLAZE RUNNER 128		9/4	AARON CARLSON	3	E-128	1900-0700	ICP			
ENG4 PVT GRIZ ONE 129		9/4	JOHN CRAFT	3	E-129	1900-0700	ICP			
ENG4 PVT BLAZE RUNNER 132		9/4	ADAN ESTRADA	3	E-132	1900-0700	ICP			
ENG5 PVT TIMBERMAN 150		9/4	KERWIN LESTER	3	E-150	1900-0700	ICP			
ENG5 PVT NORTH UTAH 266		9/7	DOMINIC SMITH	3	E-266	1900-0700	ICP			
ENG6 PVT JNJ 125		9/4	NEIL WILLIAMS	3	E-125	1900-0700	ICP			
ENG6 PVT FIRE SOLUTIONS 263		9/4	BRIANNE SHOMATE	3	E-263	1900-0700	ICP			
ENG6 PVT FIRE SOLUTIONS 265		9/4	HEATHER HERDT	3	E-265	1900-0700	ICP			
ENG6 PVT BLAZE RUNNER 268		9/4	JERRY FUGATE	3	E-268	1900-0700	ICP			
ENG6 PVT BLAZE RUNNER 269		9/6	COREY CAYWOOD	3	E-269	1900-0700	ICP			
TFLD MATTSON		9/6	ERICK MATTSON	1	O-264	1900-0700	ICP			
AMB2 EMERGENCY RESPONSE 91	X	9/2	JEFF KWIECIEN	2	E-91	1900-0700	ICP			
6. Work Assignments:										
Patrol, re-enforce, improve and continue work in Division A and Structure Groups										
7. Special Instructions:										
-REMS and Ambulance available out of Gasquet.										
-Be aware of retardant avoidance areas, mine shafts and naturally occurring asbestos.										
-Maintain awareness of fire conditions affecting road systems in your area that might be a primary escape route and establish secondary egress to safe area. Ensure trigger points are established and re-evaluated throughout the shift.										
Safety Officer(s) assigned to Division Night: Lucas Lambert										
8. Communications										
Name	Ch	Function	Rx Freq	Rx Tone	Tx Freq	Tx Tone	Mode	Notes		
NIFC C3	1	COMMAND	170.4250	(T3) 131.8	168.0750	(T3) 131.8	A	CAMP 6		
VFIRE 24	12	TACTICAL	154.2725	(T6) 156.7	154.2725	(T6) 156.7	A	GASQUET STR GROUP/NIG		
CALCORD	15	TACTICAL	156.0750	(T6) 156.7	156.0750	(T6) 156.7	A	EMS AIR COORDINATION		
A/G TAC	14	A/G TAC	169.4875	0.0	169.4875	0.0	A	AIR TO GROUND TACTICAL		
AIRGUARD	16	AIRGUARD	168.6250	0.0	168.6250	(T1) 110.9	A	EMERGENCY		
9. Prepared by: Name: Hudley/Nahas(t)/Sketo(t)/Moreno(t) RESL										
Signature: 										
ICS 204										
Date/Time: 8/27/2023 2200										
Personnel Count: 85										

ASSIGNMENT LIST (ICS 204 WF)

CONTROLLED UNCLASSIFIED INFORMATION//BASIC

1. Incident Name: SMITH RIVER COMPLEX - SOUTH	2. Operational Period: Date From: 08/28/23 Date To: 08/29/23 Time From: 0700 Time To: 0700	3. Branch Division NIGHT B/D
4. Operations Personnel:		Page 1 of 1

Operations Section Chief: Scott Grasmick / Nick Cleary(t)	Planning Ops: Tom Himmelrich / Trevor Johnson
Branch Director:	Night Ops: Joe Reyes
Division/Group Supervisor: Josh Sunde / Brad Arganbright(t)	Air Attack:

5. Resources Assigned:		**Shaded resources below are 24 hour**					
Resource Identifier	ALS	LWD	Leader	Personnel	Request #	Hours	Reporting Location
ENG3 NVRNOX RENO 385		9/7	MARSHALL BRIN	4	E-355	1900-0700	ICP
ENG3 PVT J3 371		9/7	LARRY STARK	3	E-371	1900-0700	ICP
ENG6 PVT GRIFFITH WILLIAM 146		9/7	WILLIAM GRIFFITH	3	E-146	1900-0700	ICP
ENG6 PVT LATHAN/LUERAS 154		9/7	PATRICK TAFOYA	3	E-154	1900-0700	ICP
EMPF(T) CASTRO	X	9/6	BEN CASTRO	1	O-296	1900-0700	ICP
EMTF BRISENDINE		9/2	CHAD BRISENDINE	1	O-103	1900-0700	ICP
EMTF(T) FELIX		9/6	ELISHA FELIX	1	O-298	1900-0700	ICP

6. Work Assignments:
Patrol, re-enforce, improve and continue work in Division B and Division D.

7. Special Instructions:
-REMS 6 and Ambulance 3 available out of Gasquet.
-Be aware of retardant avoidance areas, mine shafts and naturally occurring asbestos.
-Maintain awareness of fire conditions affecting road systems in your area that might be a primary escape route and establish secondary egress to safe area. Ensure trigger points are established and re-evaluated throughout the shift.
Safety Officers assigned to Division Night: Lucas Lambert

8. Communications								
Name	Ch	Function	Rx Freq	Rx Tone	Tx Freq	Tx Tone	Mode	Notes
NIFC C3	1	COMMAND	170.4250	(T3) 131.8	168.0750	(T3) 131.8	A	CAMP 6
NIFC T1	6	TACTICAL	168.0500	(T3) 131.8	168.0500	(T3) 131.8	A	
CALCORD	15	TACTICAL	156.0750	(T6) 156.7	156.0750	(T6) 156.7	A	EMS AIR COORDINATION
A/G TAC	14	A/G TAC	169.4875	0.0	169.4875	0.0	A	AIR TO GROUND TACTICAL
AIRGUARD	16	AIRGUARD	168.6250	0.0	168.6250	(T1) 110.9	A	EMERGENCY

9. Prepared by: Name: Hudley/Nahas(t)/Sketo(t)/Moreno(t) RESL
Signature: *Smareno*
ICS 204 Date/Time: 8/27/2023 2200 Personnel Count: 16

ASSIGNMENT LIST (ICS 204 WF)

CONTROLLED UNCLASSIFIED INFORMATION//BASIC



1. Incident Name: SMITH RIVER COMPLEX - SOUTH		2. Operational Period: Date From: 08/28/23 Date To: 08/29/23 Time From: 0700 Time To: 0700			3. Branch NIGHT YY		Division		
4. Operations Personnel:					Page 1 of 1				
Operations Section Chief: Scott Grasmick / Nick Cleary(t)				Planning Ops: Tom Himmelrich / Trevor Johnson					
Branch Director:				Night Ops: Joe Reyes					
Division/Group Supervisor: James Robbins / Paul Coda(t)				Air Attack:					
5. Resources Assigned:		**Shaded resources below are 24 hour**							
Resource Identifier	ALS	LWD	Leader	Personnel	Request #	Hours	Reporting Location		
HC2I TLC OAK VALLEY		9/6	JOSE PORRA	15	C-37	1900-0700	ICP		
ENG3 FWS 8430		9/6	ZACH MCGARR	4	E-353	1900-0700	ICP		
ENG3 PVT GRIZ ONE 130		9/4	KIRK HENNEFER	3	E-130	1900-0700	ICP		
ENG3 PVT HEATSEEKER 131		9/4	JACOB MACDONALD	3	E-131	1900-0700	ICP		
WTS1 PVT OILER 341		9/6	GARY HEMSTED	1	E-341	1900-0700	ICP		
EMPF(T) CASTRO	X	9/6	BEN CASTRO	1	O-296	1900-0700	ICP		
EMTF PRADO		9/9	ANTHONY PRADO	1	O-434	1900-0700	ICP		
6. Work Assignments: Patrol, re-enforce, improve and continue work in Division YY.									
7. Special Instructions: -REMS 6 and Ambulance 3 available out of Gasquet. -Be aware of retardant avoidance areas, mine shafts and naturally occurring asbestos. -Maintain awareness of fire conditions affecting road systems in your area that might be a primary escape route and establish secondary egress to safe area. Ensure trigger points are established and re-evaluated throughout the shift. Safety Officers assigned to Division Night: Lucas Lambert									
8. Communications									
Name	Ch	Function	Rx Freq	Rx Tone	Tx Freq	Tx Tone	Mode	Notes	
NIFC C3	1	COMMAND	170.4250	(T3) 131.8	168.0750	(T3) 131.8	A	CAMP 6	
VFIRE 22	11	TACTICAL	154.2650	(T6) 156.7	154.2650	(T6) 156.7	A		
CALCORD	15	TACTICAL	156.0750	(T6) 156.7	156.0750	(T6) 156.7	A	EMS AIR COORDINATION	
A/G TAC	14	A/G TAC	169.4875	0.0	169.4875	0.0	A	AIR TO GROUND TACTICAL	
AIRGUARD	16	AIRGUARD	168.6250	0.0	168.6250	(T1) 110.9	A	EMERGENCY	
9. Prepared by: Name: Hudley/Nahas(t)/Sketo(t)/Moreno(t)				RESL		Signature:			
ICS 204	Date/Time: 8/27/2023 2200			Personnel Count: 28					

AIR OPERATIONS SUMMARY ICS-220						Time Prepared 1900	Date Prepared Sunday, August 27, 2023	Prepared By John Crotty/Steve Markason					
Incident Name / Number		Sunrise	Startup	Cutoff	Sunset	Shutdown	Operational Period - Date				Operational Period - Time		
SMITH RIVER COMPLEX - CA-SRF-000968		6:36	7:06	19:25	7:55:00 PM	20:25	Monday August 28, 2023				0700-2100		
General Remarks, Safety Notes, Hazards, Air Operations Special Equipment, etc. TRACK ALL DIPSITE LOCATIONS / NUMBER OF DIPS / GALLONS TAKEN. TRACK ALL DROP LOCATIONS / NUMBER OF DROPS / GALLONS DROPPED. All GPS DATA TO BE COLLECTED IN <u>DEGREES, MINUTES, DECIMAL MINUTES</u> FORMAT. <i>AVOID Aerial Application of Retardant / Foam / Agent within 300' of Waterways, Bodies of Water, etc. If Retardant / Foam / Agent is Dropped Within These Areas Immediately Notify the AOB and Provide the Following Information: Lat / Long, Estimated Number of Gallons and a Map Detailing The Area. Watch for Powerlines. Caution when operating in non-TFR areas.</i> Report % Effort of Buckets in Cost Sheet Notes: % Federal & % Private (ODF)						Helibase Information Name Gasquet Latitude 41 50.667 Longitude 123 59.455 Name Cave Junction Latitude 42 06.250 Longitude 123 40.916 (use page 2 if needed)		TFR Information Request # Rectangle NM Altitude: 10,000' MSL Multi Lat Centerpoint: Multi Long NOTAMS: 3/1685 Frequency 126.0750 http://tfr.faa.gov/tfr2/list.html		Rescue Ship Information Day Helist Name Kern H-407 Phone Make/Model Bell 205 Location Yreka Night Helist SAC METRO 1 Bell 212 Benton Request Procedure for These Aircraft: See Below for OR Aircraft See Medical Plan For Additional Info			
						Frequencies	TX	Tone	RX	Tone	AM / FM	Position	Name
Command-South (Linked)	See South 205				FM	AOBD	John Crotty	805-440-6186					
Command-North (Linked)	See North 205				FM	ASGS	Curt Warner	805-478-1231					
AIR / GROUND - TACTICAL	169.4875	0.0000	169.4875	0.0000	FM	HEBM	George Leite (Cave)	360-581-8428					
AIR/AIR ROTARY WING	123.7250	0.0000	123.7250	0.0000	AM	HEBM	Natalie Bench (Crescent)	928-358-0963					
TFR	126.0750	0.000	126.0750	0.0000	AM	HLCO	Casey Jones	559-696-3878	Antonio Jimenez	530-310-5797			
AIR TACTICS	173.7000	0.0000	173.7000	0.0000	FM	ATGS	Rick Thompson	970-209-6989					
AIR/GROUND COMMAND	173.8500	0.0000	173.8500	0.0000	AM	ATGS	Lucas Rhea	702-521-8406	Seth Alberts	308-215-0425			
VMED 29-MEDICAL North	155.3475	156.7	155.3475	156.7	AM	UR31	Steve Ramaekers	208-473-8708					
TOLC	168.1375	0.0000	168.1375	0.0000	FM	UR32/34	Zach Freundlich	508-380-1904					
CALCORD - MEDICAL South	156.0750	156.7 (6)	156.0750	156.7 (6)	FM	NORTH AOBD	Steve Markason	307-690-5185					
IRGUARD - Emergency Only	168.6250	110.9 (1)	168.6250	0.0000	FM	NORTH ASGS	Bert Smith (T)	406-660-7371					
See IAP for IA 205's							Cave Helibase	208-891-6878		ivhb2023@gmail.com			
HELICOPTERS (Use page 2 if Needed)													
FAA #	Type	Make/Model	Helibase	Avail	Start	Remarks	FAA #	Type	Make/Model	Helibase	Avail	Start	Remarks
HT 16FH	1	UH-60	Cave	0800	0830	LL BUCKET	HB 625CK	1	S-61N	Merlin	0800	0830	LL BUCKET
HB 534VG	1	UH-60	Cave	0800	0830	LL BUCKET	HT 917	1	S-61	Merlin	0800	0830	LL TANK
HB 391SH	1	UH-60	Cave	0800	0830	LL BUCKET	H-18BH	3	Bell 407	Cave	0800	0830	HLCO
HB 899RH	1	KMAX	Cave	0800	0830	LL BUCKET	H-132BH	3	AS-350B3	Cave	0800	0830	PAX/RECON/LL/PSD
H-527	2	Bell 212	Cave	0800	0830	LL BUCKET	H-942AE	3	AS-350B3E	Brookings	0800	0830	PAX/RECON/LL/PSD
UR31	3	Alta X	Gasquet	TBD	TBD	IR/PSD (Independence)	UR32/34	3	Alta X/DJI	Cave	TBD	TBD	IR/PSD (Black Module)
UR33	3	Alta X	Gasquet	TBD	TBD	IR (Eagle Lake WFM)	UR35	3	DJI M600	Cave	TBD	TBD	IR/PSD (Lakeview IHC - Night)
UF1	1	Aerovel Flex	Gasquet	TBD	TBD	IR (Stroud Module)							
SOUTH MEDICAL A/C							NORTH MEDICAL A/C						
TBD	3	MH-65	Humboldt			Coast Guard	20695	1	HH-60M	Roseburg			OR National Guard
H-902	2	UH1	Kneeland			Cal Fire	H-38HX	3	AS-250B3	Sun River			Shorthaut - 187 nm
H-14	3	A-Star B3	Redding			CHP							
FIXED WING (Use Page 2 if Needed)													
FAA #	Type	Make/Model	Base	Avail	Start	Remarks	FAA #	Type	Make/Model	Base	Avail	Start	Remarks
N-7MZ	1	C-501	RDD	0800	0830	ATGS (RDD)	N-688TM	1	AC-680V	MED	800	830	ATGS (MFR)

HEALTH AND SAFETY MESSAGE

SAFETY starts with **YOU**
We are **ALL** accountable for **SAFE** behaviors

For Day/Night Operations: August 28-29, 2023

INCIDENT: Smith River Complex	Day: Monday Shift: Day Night
<p>Major Hazard and Risk:</p> <ul style="list-style-type: none"> ➤ Hazard Trees: Keep safe distance if possible, use spotters, maintain situational awareness. ➤ Driving and Traffic: Be prepared for adverse driving conditions due to a change in weather. Go slow to be fast. ➤ Heat/Cold Related Injuries: Stay hydrated, eat properly, take frequent breaks, and pay attention to your body. Utilize appropriate cold weather gear based on a current forecast to stay warm and dry. ➤ Extended Extraction Times: Be familiar with the medical plan. Develop a plan on how you would get an injured firefighter out timely. Factor in how smoke inversions and fog can reduce the likelihood of utilizing helicopters for a medivac. Pay attention to incoming weather for further complications with transport. 	
<p><u>Standard Firefighting Order of the Day:</u> Maintain control of your forces at all times.</p> <p><u>Watch Out Situation #7:</u> No communication link with crewmembers or supervisor</p>	
<p><u>Working around heavy equipment</u></p> <ul style="list-style-type: none"> • Ensure communications • Avoid working below equipment • Maintain separation <div style="text-align: center; margin-top: 20px;">  </div>	<p><u>Operational Tempo</u></p> <ul style="list-style-type: none"> • Risk little to gain little • Risk more to gain more • The right tempo for the Job <div style="text-align: center; margin-top: 20px;">  </div>
<p>Thanks from your Safety Team!! Rick Bertram SOFC Ron Plummer SOF 2</p>	<p><i>There are no secrets to success. It is the result of preparation, hard work, and learning from failure.</i></p> <p>- Colin Powell</p>

ICS 205 - INCIDENT RADIO COMMUNICATIONS PLAN

CONTROLLED UNCLASSIFIED
INFORMATION//BASIC

1. Incident Name: SMITH RIVER COMPLEX - SOUTH Incident Channels			2. Date/Time Prepared Date: 08/27/2023 Time: 1930			3. Operational Period: Date From: 08/28/23 Date To: 08/29/23 Time From: 0700 Time To: 0700			
4. Communications									
Ch#	Function	Name	Assigned To	Rx Freq	Rx Tone	Tx Freq	Tx Tone	Mode	Notes
1	COMMAND	NIFC C3	ALL DIVS	170.4250	(T3) 131.8	168.0750	(T3) 131.8	A	CAMP 6
2	COMMAND	NIFC C34	ALL DIVS	173.9750	(T3) 131.8	164.8625	(T3) 131.8	A	MONKEY RIDGE
3	COMMAND	NIFC C35	ALL DIVS	173.8625	(T3) 131.8	163.8250	(T3) 131.8	A	SHIP MTN LOOKOUT
4	COMMAND	NIFC C48	ALL DIVS	165.4625	(T3) 131.8	162.1750	(T3) 131.8	A	HIGH DIVIDE
5	COMMAND	NIFC C55	ALL DIVS	173.8375	(T3) 131.8	165.5125	(T3) 131.8	A	UNNAMED KNOB ABOVE RC DIP
6	TACTICAL	NIFC T1	DIVIDE STR GRP, D, NIGHT B/D	168.0500	(T3) 131.8	168.0500	(T3) 131.8	A	
7	TACTICAL	NIFC T3	A	168.6000	(T3) 131.8	168.6000	(T3) 131.8	A	
8	TACTICAL	NIFC T4	MM	166.7250	(T3) 131.8	166.7250	(T3) 131.8	A	
9	TACTICAL	NIFC T5	PP, B	166.7750	(T3) 131.8	166.7750	(T3) 131.8	A	
10	TACTICAL	NIFC T6	SS, VV, ALL CONTINGENCY	168.2500	(T3) 131.8	168.2500	(T3) 131.8	A	
11	TACTICAL	VFIRE 22	YY, NIGHT YY	154.2650	(T6) 156.7	154.2650	(T6) 156.7	A	
12	TACTICAL	VFIRE 24	GASQT/NIGHT STR GP	154.2725	(T6) 156.7	154.2725	(T6) 156.7	A	GASQUET STR GROUP/NIGHT STR GROUP
13	A/G CMD	A/G CMD	ALL DIVS	173.8500	0.0	173.8500	0.0	A	OPS, BRANCH AND DIVISION USE
14	A/G TAC	A/G TAC	ALL DIVS	169.4875	0.0	169.4875	0.0	A	AIR TO GROUND TACTICAL
15	TACTICAL	CALCORD	ALL DIVS	156.0750	(T6) 156.7	156.0750	(T6) 156.7	A	EMS AIR COORDINATION
16	AIRGUARD	AIRGUARD	ALL DIVS	168.6250	0.0	168.6250	(T1) 110.9	A	EMERGENCY
17									
18									
19									
20	AIRGUARD	AIRGUARD	ALL DIVS	168.6250	0.0	168.6250	(T1) 110.9	A	EMERGENCY
5. Special Instructions									
CURRENT CLONE: SSR825. COMMAND CHANNELS LINKED. FIND WHICH ONE WORKS BEST IN YOUR OPERATIONAL AREA. SMITH RIVER COMPLEX - SOUTH COMMUNICATIONS PHONE # 669-206-2274									
6. Prepared by (Communications Unit Leader): Name: GLENDON CHAN						Signature: <i>Glendon Chan</i>			
ICS 205 - CONTROLLED UNCLASSIFIED INFORMATION//BASIC						Date/Time: 08/27/23		1930	

I/A ICS 205 - INITIAL ATTACK INCIDENT RADIO COMMUNICATIONS PLAN

CONTROLLED UNCLASSIFIED INFORMATION//BASIC

1. Incident Name: SMITH RIVER COMPLEX - SOUTH Page 2	2. Date/Time Prepared Date: 08/27/2023 Time: 1930	3. Operational Period: Date From: 08/28/23 Date To: 08/29/23 Time From: 0700 Time To: 0700		
---	--	---	--	--

4. Communications

Ch#	Function	Name	Assigned To	Rx Freq	Rx Tone	Tx Freq	Tx Tone	Mode	Notes
1	FOREST	SRF 12	I/A CMD	172.3750	0.0	164.1750	(T12) 127.3	A	GORDON MOUNTAIN, TONE 12
2	FOREST	SRF 4	I/A CMD	172.3750	0.0	164.1750	(T4) 136.5	A	SHIP MOUNTAIN, TONE 4
3	FOREST	SRF 1	I/A CMD	172.3750	0.0	164.1750	(T1) 110.9	A	MONKEY RIDGE, TONE 1
4	DISPATCH	HUU RPT	DISPATCH	151.2500	(T1) 110.9	159.4050	(T14) 151.4	A	Tx 151.4 T14, Rx 110.9 T1
5	TACTICAL	NIFC T2	I/A TAC	168.2000	0.0	168.2000	0.0	A	NIFC TAC 2
6	TACTICAL	R5 T4	I/A TAC	166.5500	0.0	166.5500	0.0	A	R-5 TAC 4
7	TACTICAL	R5 T5	I/A TAC	167.1125	0.0	167.1125	0.0	A	R-5 TAC 5
8	TACTICAL	R5 PROJ	I/A TAC	168.6625	0.0	168.6625	0.0	A	R5 PROJECT
9	TACTICAL	VTAC 14	I/A TAC	159.4725	(T6) 156.7	159.4725	(T6) 156.7	A	Tx/Rx 156.7 Tone 6
10	TACTICAL	CDF T3	I/A TAC	151.1750	(T16) 192.8	151.1750	(T16) 192.8	A	CDF Tac 3 Tx/Rx 192.8 Tone 16
11	TACTICAL	R5 T6	I/A TAC	168.2375	0.0	168.2375	0.0	A	R-5 TAC 6
12	LOCAL	GASQ>16	LOCAL	154.4150	0.0	154.0100	(T16) 192.8	A	Gasquet VFD Rpt Tx 192.8 Tone 16
13	A/G	AG-43	ALL DIVS	167.6000	0.0	167.6000	0.0	A	AIR TO GROUND PRIMAR
14	A/G	AG-08	ALL DIVS	166.8750	0.0	166.8750	0.0	A	AIR TO GROUND SECONDARY
15	TACTICAL	CALCORD	MEDICAL EVAC	156.0750	(T6) 156.7	156.0750	(T6) 156.7	A	EMS AIR COORDINATION
16	AIRGUARD	AIRGUARD	EMERGENCY	168.6250	0.0	168.6250	(T1) 110.9	A	EMERGENCY
17									
18									
19									
20	AIRGUARD	AIRGUARD	ALL DIVS	168.6250	0.0	168.6250	(T1) 110.9	A	

5. Special Instructions

CLONE NAME: SSRCA25 SMITH RIVER COMPLEX SOUTH IA ZONE

6. Prepared by (Communications Unit Leader): Name: GLENDON CHAN 31 Signature: *Glendon Chan*

INCIDENT RADIO COMMUNICATIONS PLAN (ICS 205)

Controlled Unclassified Information//Basic

1. Incident Name:	2. Date/Time Prepared:	3. Operational Period:	
SMITH RIVER COMPLEX NORTH	Date: 08/27/2023 Time: 18:00	Date/Time From: 08/28/2023 0600	Date/Time To: 08/29/2023 0600

4. Basic Radio Channel Use:

Zone Group	Ch #	Function	Channel Name/Trunked Radio System Talkgroup	Assignment	RX Freq	RX Tone/NAC	TX Freq	TX Tone/NAC	Mode (A,D, or M)	Remarks
	1	TACTICAL	TAC 1	UNASSIGNED	168.0500	192.8	168.0500	192.8	A	UNASSIGNED
	2	TACTICAL	TAC 2	DIV I	168.2000	192.8	168.2000	192.8	A	
	3	TACTICAL	TAC 3	DIV K	168.6000	192.8	168.6000	192.8	A	
	4	TACTICAL	TAC 4	STRUCTURE E	166.7250	192.8	166.7250	192.8	A	
	5	TACTICAL	TAC 5	DIV H	166.7750	192.8	166.7750	192.8	A	
	6	TACTICAL	TAC 6	STRUCTURE W	168.2500	192.8	168.2500	192.8	A	
	7	CMD	CMD 7	ALL DIV	172.9875	162.2	165.0500	162.2	A	BOLAN MOUNTAIN (E)
	8	CMD	CMD 8	ALL DIV	170.3000	162.2	164.0000	162.2	A	FIDDLER MOUNTAIN (N)
	9	CMD	CMD 9	ALL DIV	169.0750	162.2	162.4125	162.2	A	MONKEY CR RIDGE (S)
	10	TACTICAL	VTAC 11	UNASSIGNED	151.1375	156.7	151.1375	156.7	A	UNASSIGNED
	11	TACTICAL	NIFC T1	DIV D	168.0500	131.8	168.0500	131.8	A	
	12	TACTICAL	NIFC T4	DIV MM	166.7250	131.8	166.7250	131.8	A	
	13	AIR TO GROUND	A/G CMD	ALL DIVS	173.8500	000.0	173.8500	000.0	A	BRANCH AND DIVISION USE
	14	AIR TO GROUND	A/G TAC	ALL DIVS	169.4875	000.0	169.4875	000.0	A	AIR TO GROUND TACTICAL
	15	AIR MEDICAL	VMED 29	ALL DIVS	155.3475	156.7	155.3475	156.7	A	EMS AIR COORDINATION
	16	AIR TO GROUND	AIRGUARD	ALL DIVS	168.6250	000.0	168.6250	110.9	A	EMERGENCY AIRCRAFT CONTACT

5. Special Instructions: COMMUNICATIONS NORTH PHONE NUMBER: 971-245-0253 (NORTH ONLY)

6. Prepared By COML	Name: Bruce Hanna	Signature: /s/ Bruce Hanna
ICS 205	IAP Page	Date/Time: 8/27/2023 19:00

COMMUNICATIONS LIST (ICS 205A)

1. Incident Name: SMITH RIVER COMPLEX - SOUTH	2. Operational Period: Date From: 08/28/23 Date To: 08/29/23 Time From: 0700 Time To: 0700
---	--

3. Basic Local Communications Information		
Name	Location	Method(s) of Contact (phone, pager, cell, etc.)
Safety	ICP	669-206-2318
Agency Admin	ICP	669-206-2273
Liason	ICP	669-206-2278
Plans	ICP	669-206-2275
Resources	ICP	669-206-2272
Demob / Check In	ICP	669-206-2271
Logistics / Ordering	ICP	669-206-2314
Time / Personnel / Comp Claims	ICP	669-206-2317
FSC / Equipment / Contract Time	ICP	669-206-2316
Medical	ICP	669-206-2315
IMET / James Cell	ICP	240-778-5316

4. Prepared by: Name:	Kathi Sizemore	Position/Title: INCM	Signature: <u><i>Kathi Sizemore</i></u>
ICS 205A	<small>NIMS IAP</small>	Date/Time: 08/27/23	

LOGISTICS MESSAGE

1. Incident Name:
SMITH RIVER COMPLEX - SOUTH

2. Operational Period: Date From: 8/28/2023 Date To: 8/29/2023
Time From: 0700 Time To: 0700



Kitchen Hours

Breakfast 0600 -1000
Dinner 1800 - 2200

Shower Hours

0500 - 1200, 1400 - 2200

Laundry Hours

0530 - 2300
Gasquet Only

Fuel Tenders Hours

0630 - 1200, 1400 - 2100

Vehicles are only permitted to refuel at the designated fueling station.
No refueling permitted in camp.

Weed Wash Hours

0630 - 1200, 1400 - 2100

Lunches, water, and ice are available at
Gasquet Base Camp at the far west end of the runway.

FINANCE MESSAGE

1. Incident Name: SMITH RIVER COMPLEX - SOUTH	2. Operational Period: Date From: 8/28/2023 Time From: 0700	Date To: 8/29/2023 Time To: 0700
---	--	---

CTR and Shift Tickets:

-If you have the ability to scan a QR code with your smartphone, scan the QR code at the bottom this page to get a fillable CTR or shift tickets. Using a .pdf format, you can scan and fill, then email to your Supervisor on the incident for signature and submission.

-Another option is to complete a paper CTR / Shift Ticket, get it signed by your supervisor on the fire, and take a picture of it.

E-mailing CTRs and Shift Tickets

Subject line: SOUTH TIME

Include your Resource #

Email to: 2023.smithrivercomplex.finance@firenet.gov

-If you are emailing your CTR, SHIFT TICKET, or any type of pay documentation to FINANCE, please put SOUTH TIME in the subject line.

-This email can be used to submit finance check-in documents too, like manifests, copies of resource orders, AD casual hire forms, receipts, etc. Be sure to include your Resource Order number somewhere in the body of the email.

-You're encouraged to submit time every two days if possible to stay current, and...

REMEMBER, HARD PAPER COPIES OF DOCUMENTS ARE ALWAYS WELCOME TOO!!

Resources need to check with Finance:

O-185	O-155	E-97	E-125	C-23
O-154	E-205	E-280	E-292	C-2
E-248	E-273	O-126	O-113	

NOTE: Contractor Evaluation forms can be found under the Incident QR code.

E-mail QR



CTR/Shift Tickets



TRAINING SPECIALIST MESSAGE

**A Training Specialist is on the incident.
All federal, state, and local government agency
trainees working on position task books will need
to register with the Incident Training Specialist in
order to receive proper credit for your
assignment.**

**The TNSP desk is in ICP trailer row.
PLEASE CALL or TEXT if you have any questions.**

*John LeBlanc
Training Specialist*

john_leblanc@firenet.gov
209.471.7229



Sign in training

Smith River Complex—South Fire Information

Contacts

Send us pictures!

Send to:

2023.smithrivercomplex@firenet.gov

Phone: 707.383.9727

Snail Mail

Name, E# or O#

c/o Smith River Complex Incident

Del Norte Fairgrounds

421 U.S. 101

Crescent City, CA 95531

Today's trivia...

What are the three largest fires
in California history?

Is the Lodge still
standing?

What's going
on with the
fire?

Is the road
open?



Answer:

1. August Complex 1.32 million acres.
Date: August 26, 2020
2. Dixie Fire 963,309 acres.
Date: 2021
3. Mendocino Complex. 459, 123 acres.
Date: 2018

Smith River Complex Incident: Resource Advisor Message

IMPORTANT: Yellow/Black Striped flagging indicates resource **AVOIDANCE** areas.

Cultural and Heritage Resources:

The area you are working in is rich in cultural and heritage resources which may be encountered while fighting fire. When potential cultural or heritage resource are encountered, that they are not disturbed. There is a potential that undocumented cultural resources will be encountered while fighting fire. It is important when a potential cultural resource is encountered that they are not disturbed in any manner.



GPS its location and take a photo, but do not remove or collect anything. Findings of cultural resources should not be reported over the radio. Work with your division to notify a resource advisor for recommendations on how to proceed.

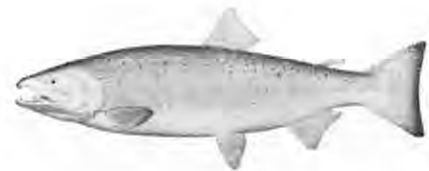
Invasive Plant Species – PLEASE USE WEED WASH



The area in and around the Smith River Complex, are home to many sensitive species. Infestations of highly invasive plant species are one of the largest threats to sensitive species populations here. Spread via vehicles and foot traffic as well as re-activation via fire is of high concern. To help protect these sensitive places, do not park in and try to avoid areas flagged areas. **Make sure to visit the WEED WASH at end of shift AND at demob.** Located on Hwy 199 on the right just past the Ranger Station.

Fish Screens: Coho Salmon Critical Habitat

Most rivers and streams in this area are considered critical habitat for Threatened Coho salmon. Please ensure that Mark 3 and Engine/Tender suction hoses have the appropriate screen attached. Talk to a READ if you think you need a screen!

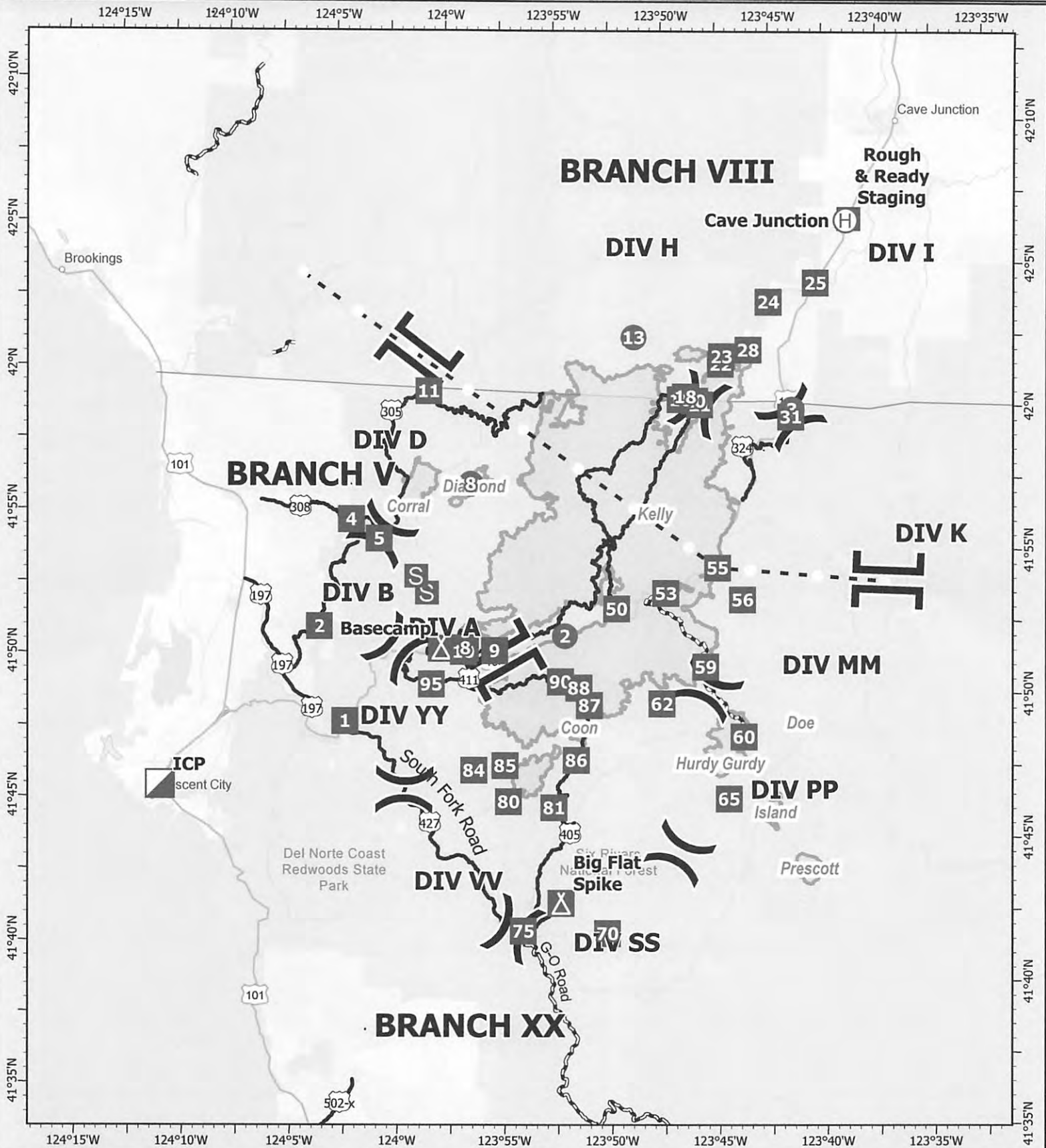


Port Orford Cedar root disease

Some local drainages are infected with a root disease that spreads via mud and water. To prevent spreading this disease to uninfected areas, all water tenders and engines will apply bleach to their tanks in a 1:1000 ratio (using bleach with 6.0 % Sodium hypochlorite). Talk to a READ if you need some bleach!

TRANSPORTATION

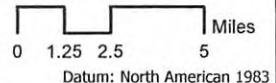
8/28/20



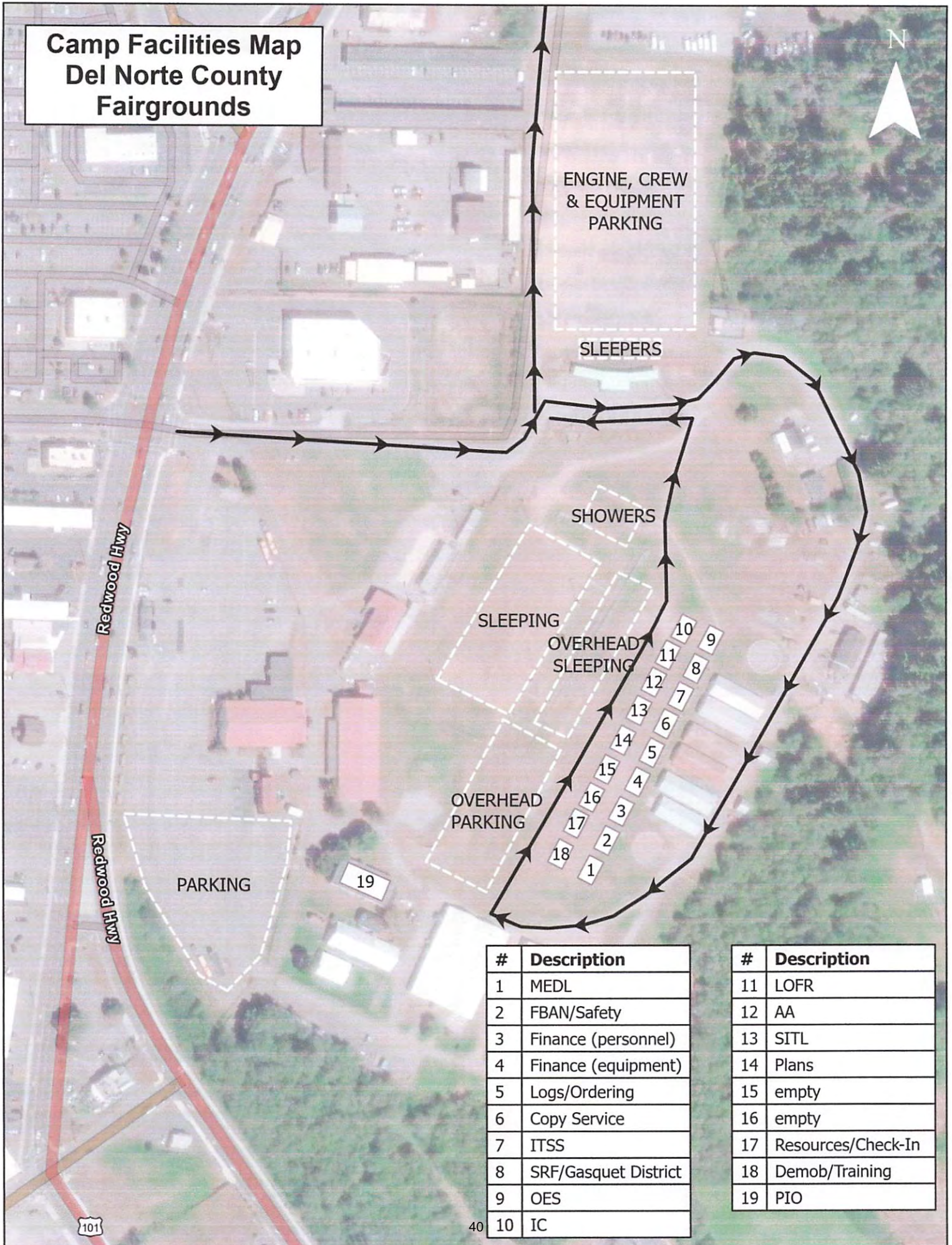
SMITH RIVER COMPLEX - SOUTH

CA-SRF-000968
August 28, 2023

- Wildfire Daily Fire Perimeter
- Highlighted Feature
- County Road
- Paved or Gravel
- Paved
- Helispot
- Helibase
- Division Break
- Branch Break
- Incident Command Post
- Drop Point
- Camp
- Staging Area 39



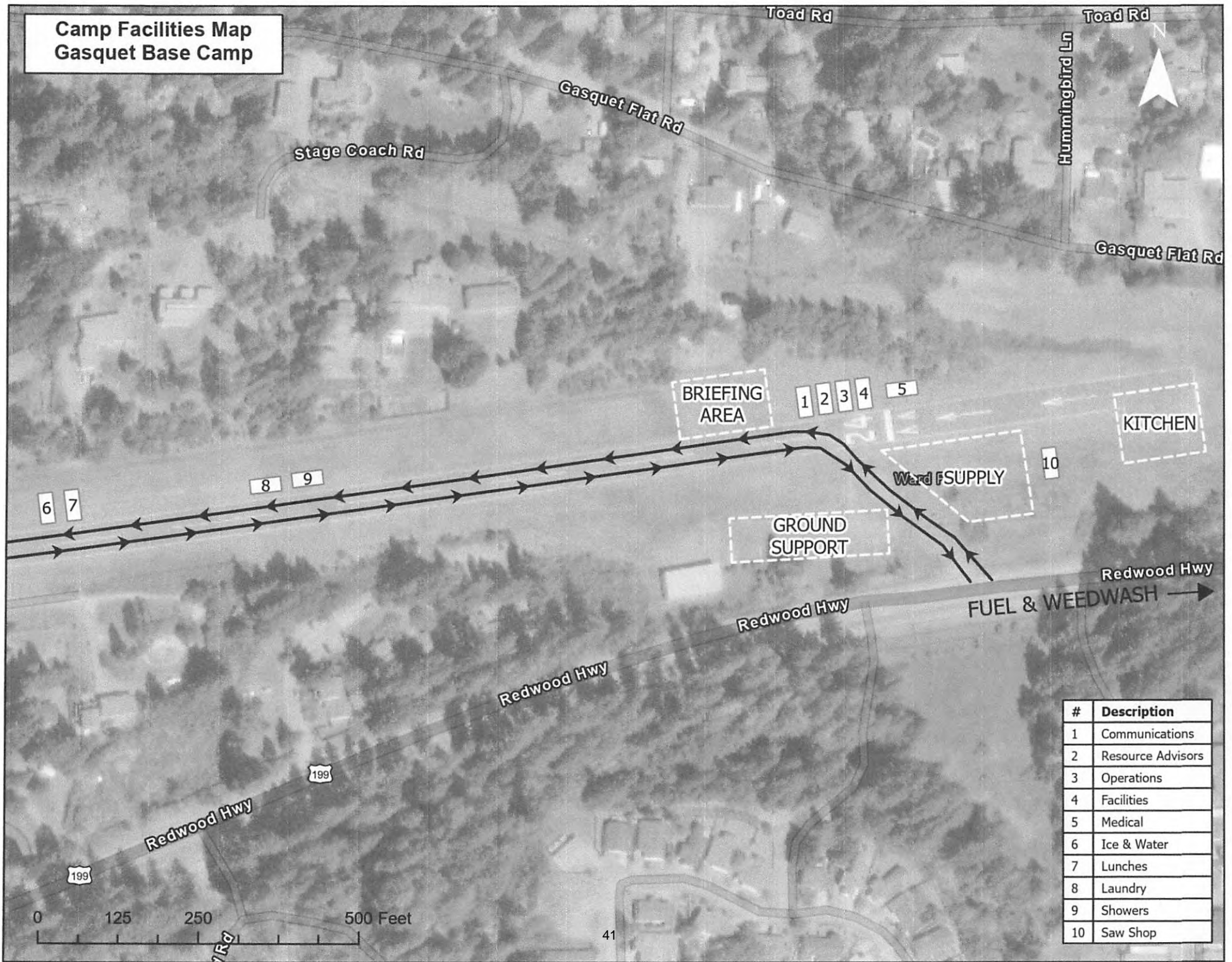
Camp Facilities Map Del Norte County Fairgrounds



#	Description
1	MEDL
2	FBAN/Safety
3	Finance (personnel)
4	Finance (equipment)
5	Logs/Ordering
6	Copy Service
7	ITSS
8	SRF/Gasquet District
9	OES
10	IC

#	Description
11	LOFR
12	AA
13	SITL
14	Plans
15	empty
16	empty
17	Resources/Check-In
18	Demob/Training
19	PIO

**Camp Facilities Map
Gasquet Base Camp**



#	Description
1	Communications
2	Resource Advisors
3	Operations
4	Facilities
5	Medical
6	Ice & Water
7	Lunches
8	Laundry
9	Showers
10	Saw Shop

MEDICAL PLAN (ICS 206)

1. Incident Name: SMITH RIVER COMPLEX - SOUTH	2. Operational Period:	Date From:	8/28/23	Date To:	8/29/23
		Time From:	0700	Time To:	0700

3. INCIDENT MEDICAL AID STATIONS

MEDICAL AID STATIONS	LOCATION	R.N. & EMT	
		YES	NO
Frontline Medical Support	Base Camp - Ward Field, Gasquet	X	

4.a. AIR AMBULANCES

NAME	LOCATION	CONTACT	PARAMEDICS	
			YES	NO
Air Ambulance / Type 3	Medford, OR	South Smith Communications	X	
CHP (Daytime only Hoist) / Type 3	Redding, CA	South Smith Communications	X	
Coast Guard (Day/Night Hoist) / Type 3	Humbolt Bay, CA	South Smith Communications		X
Reach Air Medical Type 3	Brookings, OR	South Smith Communications	X	
Cal Fire (Hoist)	Kneeland, CA	South Smith Communications	X	

4.b. GROUND AMBULANCES & REMS

NAME	LOCATION	PARAMEDICS	
		YES	NO
Ambulance 1 (Mountain Medics)	DP 1	X	
Ambulance 2 (Mountain Medics)	DP 56	X	
Ambulance 3 (Emergency Response Logistics)	Night Operations Gasquet	X	
Ambulance 4 (LMR F.D.)	DP 5	X	
REMS 1 (North County F.D.)	Branch V	X	
REMS 2 (Remote Access Medical)	Branch XX	X	
REMS 3 (Blackwoods Emergency Resources)	Branch XX	X	
REMS 4 (Blackwoods Emergency Resources)	Branch V	X	
REMS 5 (CA-PAS)	Branch XX	X	
REMS 6 (Blackwoods Emergency Resources)	Night Operations Gasquet	X	

5. HOSPITALS GPS DATUM - WGS 84

NAME	ADDRESS	TRAVEL TIME		PHONE LAT, LONG	HELIPAD		BURN CENTER	
		AIR	GRND		YES	NO	YES	NO
Sutter Coast Hospital (Level 4 Trauma Center)	800 E. Washington Blvd. Crescent City CA.		25 min.	707-464-8888 Lat: 41 46.454 Long: 124 11.537		X		X
Rogue Regional Medical (Level 2 Trauma Center)	2825 E Barnett Rd. Medford, OR	35 min.	4.5 hrs	541-789-7178 Lat: 42 19.10 Long: 122 49.50	X OR99			X
Mercy Medical Center (Level 2 Trauma Center)	2175 Rosaline Ave. Redding, CA	55 min.	4.5 hrs.	530-225-6000 Lat: 40 34.14 Long: 122 23.97	X 7CA3			X
UC Davis Medical Center (Level 1 Trauma & Burn)	2315 Stockton Blvd. Sacramento, CA	1.5 hr.	7 hrs.	916-734-3636 Lat: 38 33.20 Long: 121 27.28	X 3CLO		X	

6. MEDICAL EMERGENCY PROCEDURES

<p>LINE "MEDICAL EMERGENCY" PLAN:</p> <p>Crew Supervisor to contact Division Supervisor/Operations with:</p> <ul style="list-style-type: none"> • Patient Complaint, Condition and Location via Tactical or Command Frequency. Priority 1/Red & 2/Yellow patients • <u>Triggers</u> Incident within Incident (IWI) <p>Division Supervisor/*POC contacts South Smith Communications:</p> <ul style="list-style-type: none"> • Division Supervisor or *POC will run "<u>Medical-Emergency</u>" on Command Frequency. • Division Supervisor or *POC to use "Medical Plan (ICS 206 WF)" worksheet in the IAP or IRPG. • Communications contacts Medical Unit Leader on the Command Frequency or cell phone. <p>*POC (Point of Contact)</p>	<p>LINE "NON-EMERGENCY INCIDENT" PLAN:</p> <p>Crew Supervisor to contact Division Supervisor with:</p> <ul style="list-style-type: none"> • Patient Complaint, Condition and Location via Tactical or Command Frequency. Priority 3/Green Patients • <u>Does not</u> trigger Incident within Incident (IWI). Contact Communications via cell Phone (669) 206-2274 or Command if no cell service. <p>Division Supervisor/POC Contact Smith River Communications</p> <ul style="list-style-type: none"> • Division Supervisor or *POC will run "<u>Non-Emergency Incident</u>" via Cell phone or Command if no Cell service. • Division Supervisor or *POC to use "<u>Medical Incident Report</u>" worksheet on back of this page or in IRPG. • Communications contacts Medical Unit Leader on the Command Frequency or Cell Phone (805) 570-9061 <p>IN-CAMP - 24 HOUR MEDICAL.</p> <p>Contact Smith River Communications with: Patient Complaint, Condition, and Location via phone (669) 206-2274, Command Frequency, or 911.</p>
---	---

ICS 206	7. PREPARED BY: (Medical Unit Leader-T)	8. REVIEWED BY: (Safety Officer)
	J. Emerson/M. Lencioni/M. Caffey(t) <i>Matthew Caffey</i>	Rick Bertram <i>Rick Bertram</i>

Medical Incident Report

FOR A **NON-EMERGENCY INCIDENT**: WORK THROUGH CHAIN OF COMMAND TO REPORT AND TRANSPORT INJURED PERSONNEL AS NECESSARY.

FOR A **MEDICAL EMERGENCY**: IDENTIFY ON SCENE INCIDENT COMMANDER BY NAME AND POSITION AND ANNOUNCE **"MEDICAL EMERGENCY"** TO INITIATE RESPONSE FROM COMMUNICATIONS

Use the following items to communicate situation to communications/dispatch.

1. CONTACT COMMUNICATIONS / DISPATCH (Verify correct frequency prior to starting report)

Ex: "Communications, Div. Alpha. Stand-by for Emergency Traffic."

2. INCIDENT STATUS: Provide incident summary (including number of patients) and command structure.

Ex: "Communications, I have a Red priority patient, unconscious, struck by a falling tree.

Requesting air ambulance to Forest Road 1 at (Lat./Long.)

"This will be the Trout Meadow Medical Incident, IC is TFLD Jones. EMT Smith is providing medical care."

Severity of Emergency AND Transport Priority (priority 1, 2, 3)	<input type="checkbox"/> RED / PRIORITY 1 Life or limb threatening injury or illness. Evacuation need is IMMEDIATE <i>Ex: Unconscious, difficulty breathing, bleeding severely, 2° - 3° burns more than 4 palm sizes, heat stroke, disoriented.</i>	
	<input type="checkbox"/> YELLOW / PRIORITY 2 Serious Injury or illness. Evacuation may be DELAYED if necessary. <i>Ex: Significant trauma, unable to walk, 2° - 3° burns not more than 1-3 palm sizes.</i>	
	<input type="checkbox"/> GREEN / PRIORITY 3 Minor Injury or illness. Non-Emergency transport <i>Ex: Sprains, strains, minor heat-related illness.</i>	
Nature of Injury or Illness & Mechanism of Injury		Brief Summary of Injury or Illness (Ex: Unconscious, Struck by Falling Tree)
Transport Request		Air Ambulance / Short Haul/Hoist Ground Ambulance / Other
Patient Location		Descriptive Location & Lat. / Long. (WGS84)
Incident Name		Geographic Name + "Medical" (Ex: Trout Meadow Medical)
On-Scene Incident Commander		Name of on-scene IC of Incident within an Incident (Ex: TFLD Jones)
Crew Patient Care		Name of Care Provider (Ex: EMT Smith)

3. INITIAL PATIENT ASSESSMENT: Complete this section for each patient as applicable (start with the most severe patient)

Agency Affiliation: (NO PATIENT NAMES) Federal Contractor Local Government

Patient Assessment: Age: Weight: Chief Complaint:

(If pertinent to Injury) Skin Signs: (color/moisture/temp) Level of Consciousness: BP: HR: Respirations:

Treatment:

4. TRANSPORT PLAN:

Evacuation Location (drop point, intersection, helispot, Lat. / Long, hazards) Patient's ETA to Location:

5. ADDITIONAL RESOURCES / EQUIPMENT NEEDS:

Paramedic / EMT - Crews - Immobilization Devices - AED - Oxygen - Trauma Bag - IV/Fluid(s) - Splints - Rope rescue - Wheeled litter - HAZMAT - Extrication

6. COMMUNICATIONS: Identify State Air/Ground EMS Frequencies and Hospital Contacts as applicable

Function	Channel Name/Number	Receive (RX)	Tone/NAC *	Transmit (TX)	Tone/NAC *
COMMAND					
AIR-TO-GRND					

7. CONTINGENCY: Considerations: If primary options fail, what actions can be implemented in conjunction with primary evacuation method? Be thinking ahead.

8. ADDITIONAL INFORMATION: Updates/Changes, etc.

REMEMBER: Confirm ETA's of resources ordered. Act according to your level of training. Be Alert - Keep Calm - Think Clearly - Act Decisively

*** Follow up with MEDL upon return to ICP ***