



## FINANCE MESSAGE

**Finance Email:** [2023.smithrivercomplex.finance@firenet.gov](mailto:2023.smithrivercomplex.finance@firenet.gov)

**Finance Phones:** *Contractors: 971-245-0259 Agency Personnel: 971-762-8750*

Please email your time to the Finance email address daily *with the word "NORTH" in the subject line.*

**See Finance if you have not closed out your time for Large Fire Support**

Finance documents required upon check in are:

### Required Documents

Overhead, Agency Crews & Cooperators	Contract Resources
<b>Finance docs needed:</b> Resource Order, Manifest, Cooperative Agreement, Casual Hire Form w/ECI# (as applicable)	<b>Finance docs needed:</b> Resource Order, Manifest, Full Contract/Agreement, Certifications ( <i>if required</i> ) Pre-Inspection
<b>Daily:</b> CTRs, Shift Tickets	<b>Daily:</b> CTRs, Shift Tickets, receipts (claims, etc.)
	<b>NOTE: Document travel times and odometer readings.</b>
<b>Demob:</b> Signed OF-288; Signed OF-286	<b>Demob:</b> Contractor Evaluations, Shift Tickets, receipt(s) for Addition/Deductions, Post-Inspection, Signed OF-286
<b>Additional Incident Information:</b>  <u>Incident Name:</u> Smith River Complex North <u>Incident Number:</u> CA-SRF-000968 <b><u>Financial codes:</u></b> DOI – QJ6L Washington DNR 221-ICM USDA – P5QJ6L (0510)	<b>Please call finance regarding issues with your time:</b> O-50127 Stuart            O-50152 Borowski O-50064 St Pierre        O-50180 Spindle O-50267 Metok            C-50010 Laguna O-50203 Fore O-50265 Cortazor

## LOGISTICS

Lake Selmac ICP	Rough & Ready Supply/Ground Support (located across Hwy 199 from Cave Staging)
<b>Kitchen Hours</b> <ul style="list-style-type: none"> <li>• Breakfast 0530 – 0900</li> <li>• Lunch/Water/ICE available at ICP</li> <li>• Dinner 1730 <b>Swing/Night Shift Only</b></li> <li>• Dinner 1800 – 2200</li> </ul> <b>Showers A1 (located near laundry)</b> <ul style="list-style-type: none"> <li>• Open 0600 – 1200</li> <li>• Open 1400 – 2300</li> </ul> <b>Showers All American (located near sleeper trailers)</b> <ul style="list-style-type: none"> <li>• Open 0430 – 1200</li> <li>• Open 1400 – 2130</li> </ul> <b>Laundry – (located near showers)</b> <ul style="list-style-type: none"> <li>• Open 0500-2200 24hr turnaround</li> </ul> <b>Fuel Tender</b> <ul style="list-style-type: none"> <li>• Open 0600 – 1200</li> <li>• Open 1300 – 2100</li> </ul>	<b>Supply</b> <ul style="list-style-type: none"> <li>• Open 0600 – 2100</li> </ul> <b>Fuel Tender @ Cave Staging</b> <ul style="list-style-type: none"> <li>• Open 0600 – 1200</li> <li>• Open 1300 – 2100</li> </ul> <b>Weed Wash @ Cave Staging</b> <ul style="list-style-type: none"> <li>• Open 0700 – 1900</li> </ul>


<b>INCIDENT OBJECTIVES</b>	<b>1. Incident Name</b> Smith River Complex North	<b>2. Date</b> September 4, 2023	<b>3. Time</b> 2000
<b>4. Operational Period: 09/05- 09/06/2023 0700-0700</b>			
<p><b>5. General Objectives:</b> Implement a FULL suppression strategy for the Smith River Complex:</p> <ul style="list-style-type: none"> <li>• Provide for firefighter and public safety through hazard identification and application of a shared risk management process.</li> <li>• Coordinate public information to provide timely updates to agency partners, cooperators, and the public.</li> <li>• Coordinate suppression activities with READs to minimize impacts on natural and cultural resources.</li> <li>• Effectively manage and track costs for all incidents identified within the Smith River Complex.</li> <li>• Coordinate with agency leadership to ensure effective and efficient management of firefighting resources.</li> </ul> <p>Smith River Complex North (NW13):</p> <ul style="list-style-type: none"> <li>• Protect and minimize the impact to the communities within the Illinois Valley and identify future areas of control to limit spread of the fire west towards Brookings and north to Elk Creek and Dwight Creek. Focus suppression efforts to keep fire west of 4402 road, south of Gilligan Butte and west of Highway 199.</li> <li>• Utilize a structure protection group to suppress fire in the event fire reaches structure protection blocks. Work with local fire district to build incident structure protection plan.</li> <li>• Work with Josephine and Curry Counties in Oregon, as well as Del Norte County in California, for evacuation levels and recommendations.</li> <li>• Develop a PACE model that aligns fire suppression efforts with CA-15 to protect communities, infrastructure, commerce, and primary travel routes.</li> </ul> <p>Smith River Complex South (SW2):</p> <ul style="list-style-type: none"> <li>• Provide for firefighter and public safety through hazard recognition and application of the risk management process.</li> <li>• Coordinate public information to provide frequent and timely situation updates to affected agency partners, cooperators, and the public.</li> <li>• Coordinate suppression and repair activities with Resource Advisors to minimize impacts to natural and cultural resources.</li> <li>• Effectively manage and track costs for all incidents within the Smith River Complex.</li> <li>• Coordinate closely with Region VI fire leadership to ensure effective and efficient management of firefighting resources.</li> </ul>			
<p><b>5a. Incident Requirements</b></p> <ul style="list-style-type: none"> <li>• Provide Agency Administrator updates and briefings on incident status as conditions evolve.</li> <li>• Firefighting operations will implement tactics that offer the highest probability of success to protect priority values and minimize unnecessary exposure.</li> <li>• Priority values are firefighter and public safety, communities, critical infrastructure, private and tribal timber lands and natural resources.</li> </ul> <p><b>5b. Leaders Intent</b></p> <ul style="list-style-type: none"> <li>• <b>Safety:</b> Firefighter, public, and aviation safety will be addressed through hazard/exposure risk mitigation processes.</li> <li>• <b>Risk Management:</b> Utilize an aligned risk assessment process that mitigates exposure to firefighters through evaluation of conditions during the duration of the incident.</li> <li>• <b>Communication:</b> Keep Agency Administrators and firefighters informed of strategic actions, accomplishments, and challenges.</li> <li>• <b>Operations:</b> Make informed strategic/tactical decisions suppressing the fire in the right geographic locations with the appropriate resources having the highest probability of success.</li> <li>• <b>Stakeholders:</b> Collaborate with local partners, officials, and landowners to provide situational updates pertinent to the fire.</li> <li>• <b>Logistics:</b> Provide support ensuring food, water, and shelter for incident responders.</li> <li>• <b>Human Resources:</b> Ensure that all incident personnel are treated with dignity and respect, while having zero tolerance for harassment, alcohol, or illegal drug use.</li> <li>• <b>Public Information:</b> Provide timely and accurate information through media outlets, trap lines, briefings, community meetings, and social platforms.</li> <li>• <b>Finance:</b> Monitor and communicate incident cost associated with meeting incident objectives.</li> <li>• <b>Planning:</b> Provide incident documentation, resource tracking, and accurate data management.</li> </ul>			
<b>6. Weather Forecast &amp; General Safety Message for Period – See Attached</b>			
<b>7. Attachments (mark if attached)</b>			
<input checked="" type="checkbox"/> Organization List - ICS 203	<input checked="" type="checkbox"/> Weather Forecast	<input checked="" type="checkbox"/> Safety Message	
<input checked="" type="checkbox"/> Div. Assignment Lists - ICS204	<input checked="" type="checkbox"/> Fire Behavior Forecast	<input type="checkbox"/> Medical Emergency Com Plan	
<input checked="" type="checkbox"/> Communications Plan - ICS 205	<input checked="" type="checkbox"/> Incident Map	<input type="checkbox"/>	
<input checked="" type="checkbox"/> Medical Plan - ICS 206	<input checked="" type="checkbox"/> Air Operations - ICS 220	<input type="checkbox"/>	
<b>9. Prepared by</b> Aileen Nichols	<b>9. Approved by (Incident Commander)</b> Eric Riener 		

<b>ORGANIZATION ASSIGNMENT LIST</b>	
1. Incident Name <b>Smith River Complex North</b>	
2. Date <b>September 4, 2023</b>	3. Time <b>1830</b>
4. Operational Period <b>September 5 - September 6, 2023 0700-0700</b>	
Position	Name
<b>NWIMT 13 LWD 9/05/2023</b>	
5. Incident Commander and Staff	
Incident Commander	<b>Eric Riener</b>
Incident Commander	<b>Brian Gales</b>
Liaison Officer/Deputy Incident Commander	<b>Larry Nickey</b>
Strategic Operations Chief	<b>Robert Burnside</b>
Safety Officer	<b>Ray Hershey</b>
Safety Officer - t	<b>Todd Meyer</b>
Safety Officer - t	<b>Tim Klukas</b>
Information Officer	<b>Randall Rische</b>
Information Officer Deputy	<b>Eric Waters</b>
Human Resource Specialist	<b>Margaret Dietrich</b>
6. Agency/Organization Representative(s):	
USFS RSF Agency Administrator	<b>Chris Christofferson</b>
USFS RSF River Agency Representative	<b>Scott Blower</b>
USFS RSF Fire Management Liaison	<b>Mike McCann</b>
BLM Agency Administrator	<b>Steven Lydick</b>
BLM Agency Administrator - t	<b>Heidi Lowery</b>
BLM Agency Representative	<b>Chris Foster</b>
Oregon Department of Forestry	<b>Brandon Ferguson</b>
Lead READ	<b>Stacy Johnson</b>
7. Planning Section	
Plans Chief	<b>Aileen Nichols</b>
Resources Unit	<b>Meredith Butcher</b>
Resources Unit - t	<b>Carolyn Zanofto</b>
Status Check-In	<b>Sandy Hoffman</b>
Status Check-In/Documentation Unit - t	<b>Robert Wandel</b>
Demob Unit	<b>Laura Backlund</b>
Situation Unit - t	<b>Laurie Bergvall</b>
Fire Behavior Analyst	<b>Dean Warner</b>
Fire Behavior Analyst/Long Term Fire Analyst	<b>Ryan Jones</b>
Incident Meteorologist	<b>Phil Manuel</b>
Air Resource Advisor	<b>Tod Johnson</b>
Air Resource Advisor - t	<b>Ghazal Majidi-Weese</b>
GIS Specialist	<b>Craig Higbee</b>
Computer Specialist	<b>Dave Johnson</b>
Computer Specialist	<b>Jeff Hixon</b>
Computer Specialist - t	<b>Zak Thomas</b>
Strategic Operational Planner - t	<b>Scott Brewer</b>
8. Logistics Section	
Logistics Chief	<b>Jim Hammer</b>
Logistics Chief - t	<b>Cindy Preston</b>
Supply Unit Leader - t	<b>Jon Byerly</b>
Ordering Manager	<b>Rob Jeter</b>
Ordering Manager - t	<b>Robert Yarnall</b>
Communications Unit Ldr - t	<b>Bruce Hanna</b>
Incident Comm Mgr	<b>Alandra Swords</b>
Food Unit Leader	<b>Pat Young</b>
Facilities Unit Leader	<b>Keith Yonaka</b>

Facilities Unit Leader	<b>Shannon Anderson</b>	
Medical Unit Leader	<b>Ben Meacham</b>	
Medical Unit Leader	<b>James Brown</b>	
Ground Support Unit	<b>Billie Hunter</b>	
Receiving/Distribution Mgr - t	<b>Aaron Ritter</b>	
Base Camp Manager - t	<b>Justin Schmal</b>	
9. Operations Section		
Operations (Field)	<b>John Spencer</b>	
Operations (Planning/ Strategic)	<b>Shawn Jaca</b>	
Operations (Planning)	<b>Tim Cawley-Murphree - t</b>	
Operations (Night)		
a. Branch VIII		
Branch Director		<b>Danny Bryant</b>
Division Supervisor	<b>E</b>	<b>Keith Smith Aaron Bruning - t</b>
Division Supervisor	<b>F</b>	<b>Jason Bunker Josh Morris - t</b>
Division Supervisor	<b>G</b>	<b>Jesse Stone Billy Turner - t</b>
b. Branch X		
Branch Director		<b>Randy Anderson</b>
Division Supervisor	<b>H</b>	<b>Anna Graves</b>
Division Supervisor	<b>I</b>	<b>Whitney Machado Robert Boles Silas Baffa - t</b>
Division Supervisor	<b>K</b>	<b>Derrick Youngerman Marc Johnson - t</b>
Group Supervisor	<b>Contingency Group</b>	<b>Rob Fore</b>
Task Force Leader	<b>Night</b>	<b>Brandon Rea</b>
c. Air Operations Branch		
Air Support Group	<b>Chuck Turner</b>	
Helibase Manager (Cave)	<b>George Leite</b>	
10. Finance Section		
Finance Chief	<b>Veronika Klukas</b>	
Cost Unit	<b>Paula James</b>	
Time Unit	<b>Angie Chapman</b>	
Time Unit - t	<b>Heather Fitzpatrick</b>	
Proc Unit Leader	<b>Laurette Gaylord</b>	
Proc Unit Leader - t	<b>Eric Soto</b>	
COMPS/CLAIMS	<b>Hanna Jeter</b>	
Incident Cont. Project Insp	<b>Bob Gavenas</b>	
Incident Cont. Project Insp	<b>Stan Zazado</b>	
<b>PREPARED BY: Meredith Butcher</b>		



## Fire Behavior Forecast #16

<b>Incident:</b> Smith River Cx North CA-SRF-000968	<b>TYPE OF FIRE:</b> Wildfire
<b>DATE/TIME ISSUED:</b> 9/4/23 1900	<b>OPERATIONAL PERIOD:</b> 9/5-9/6/23 All Shifts
<b>FBAN:</b> Dean Warner, Ryan Jones	<b>Signed:</b>  Ryan Jones

**Weather Summary** - See Incident Weather Forecast: West winds with moderate conditions.

### Fuels

**Shrub:** Shrubs and brush are 1 to 3 feet high with a low to moderate load of grass intermixed with sparse stems of conifer. Manzanita brush and other live fuels are drought stressed from below normal amounts of spring precipitation. Given the exposed nature of this fuel type, eye level winds in excess of 6 mph can cause rates of spread to exceed 8 chains per hour. Without wind these fuels will typically exhibit low rates of spread.

**Timber litter and shrub:** Primary carrier of the fire is understory brush with timber and leaf litter. Expect slow rates of spread under moderate weather conditions. Canopy closure shelters fuels from wind, making fire spread slow and continuous with low to moderate winds.

**OUTPUTS:**      Expected Fine Dead Fuel Moisture: 8-11%      POI: 20-40%

Fire Behavior: Moderate to active Atmosphere: Stable Max. spot distance: 0.2 mile LAL: 2 ERC: 42 IV Airport (Below average)	<b>Fuel/Type Model</b>	<b>Maximum Rate of Spread</b>	<b>Maximum Flame Length</b>
	Shrub	2 ch/hr	<2 ft.
	Timber litter shrub	<1 ch/hr	<1 ft.

Expected Fire Behavior is Based on the Warmest, Driest, Windiest Conditions Forecasted.

**General/Potential:** Recent precipitation will provide short-term relief to fuels as a drying trend begins over the next 3-5 days. Fuel moistures in grass/shrub fuel types on exposed slopes will be the most responsive to solar heating and could resume consumption later this afternoon. Fuels under dense canopies will lag behind exposed fuels, expect minimal fire activity in dense timber stands. Also, ERC values are trending upward. Within a couple of days fuel dryness will be above average.

**Golf:** Most fire spread is in a backing mode. Watch for rolling debris and the potential for uphill spread, especially in areas of dense canopy.

**Hotel:** Most fuels are exposed, if solar radiation is abundant, expect more smoldering and the return of minimal fire activity. The forecasted NW/W wind will favor tactical operations.

**India:** Expect fuels under dense canopies to be available for consumption. West winds have the potential to increase smoldering and spread in interior pockets that have partially burned.

**Kilo:** Fire is not expected to cross east of Highway 199, north of the Collier Tunnel.

**Night Ops:** Expect minimal fire behavior with some isolated smoldering and creeping in the duff.

### Air Operations:

Aviation operations should have no issues throughout the day.

**Safety:** Expect incremental warming and drying to occur in the coming days. Potential fire behavior needs to be anticipated throughout the day. Base all actions on current and expected behavior of the fire. Every day brings us one day closer to the end of fire season, but we still have at least one, and possibly several more periods of hot dry weather still to come.

<b>DIVISION ASSIGNMENT LIST</b>				1. Branch <b>VIII</b>	2. Division <b>E</b>	
3. Incident Name <b>Smith River Complex North</b>				4. Operational Period Date: <b>09/05/2023</b> Time: <b>0600-2200</b>		
5. Operations Personnel						
Operations Chief		<b>John Spencer</b>		Division Supervisor		<b>Keith Smith Aaron Bruning-t</b>
Safety Officer		<b>Ray Hershey</b>		Air Attack		
6. Resources Assigned this Period						
Strike Team/Task Force/Resource Designator		Leader	# Persons	LWD	Drop Off PT./Time	Pick Up PT./Time
<b>1</b>	<b>O-50204 TFLD</b>	<b>Matt Noss</b>	<b>1</b>		<b>Lake Selmac ICP</b>	<b>Elk Valley FOB</b>
<b>2</b>	<b>O-50152 TFLD - t</b>	<b>Mike Borowski</b>	<b>1</b>	<b>9/8</b>	<b>Lake Selmac ICP</b>	<b>Elk Valley FOB</b>
<b>3</b>	<b>O-50166 HEQB</b>	<b>Mike Black</b>	<b>1</b>	<b>9/10</b>	<b>Lake Selmac ICP</b>	<b>Elk Valley FOB</b>
<b>4</b>						
<b>5</b>	<b>**E-50227 ENG4 Fuego</b>	<b>Corey Nunnally</b>	<b>3</b>	<b>9/14</b>	<b>Lake Selmac ICP</b>	<b>Elk Valley FOB</b>
<b>6</b>	<b>**E-50146 ENG6 Wildland Fire Service</b>	<b>Rhys van Anderson</b>	<b>3</b>	<b>9/14</b>	<b>Lake Selmac ICP</b>	<b>Elk Valley FOB</b>
<b>7</b>						
<b>8</b>	<b>E-50251 WTS2 Table Mtn Forestry</b>		<b>1</b>		<b>Elk Valley FOB</b>	<b>Elk Valley FOB</b>
<b>9</b>	<b>E-50040 CHP2 Prometheus</b>	<b>Joshua Roxberg</b>	<b>3</b>	<b>9/5</b>	<b>Lake Selmac ICP</b>	<b>Elk Valley FOB</b>
<b>10</b>	<b>E-50216 SKD1 Partridge</b>	<b>Ryan McCord</b>	<b>2</b>	<b>9/14</b>	<b>Lake Selmac ICP</b>	<b>Elk Valley FOB</b>
<b>11</b>	<b>E-50247 FEL1 Pathfinder Engineering</b>		<b>2</b>		<b>Elk Valley FOB</b>	<b>Elk Valley FOB</b>
<b>12</b>	<b>E-50068 FEL1 Inland Timber</b>	<b>Shane Dougherty</b>	<b>2</b>	<b>9/6</b>	<b>Lake Selmac ICP</b>	<b>Elk Valley FOB</b>
<b>13</b>	<b>E-50070 LOGL Mark Jones Trucking</b>	<b>William Duffield</b>	<b>2</b>	<b>9/9</b>	<b>Lake Selmac ICP</b>	<b>Elk Valley FOB</b>
<b>14</b>	<b>E-50158 DZR2 Inland Timber</b>	<b>Jim Daugherty</b>	<b>2</b>	<b>9/10</b>	<b>Lake Selmac ICP</b>	<b>Elk Valley FOB</b>
<b>15</b>	<b>E-50063 Processor Gibson &amp; Son</b>	<b>Andrew Jager</b>	<b>2</b>	<b>9/8</b>	<b>Lake Selmac ICP</b>	<b>Elk Valley FOB</b>
<b>16</b>	<b>E-50249 GRD2 Fortner Excavation</b>		<b>2</b>		<b>Elk Valley FOB</b>	<b>Elk Valley FOB</b>
<b>17</b>	<b>E-50255 EXC1 Cockrell Ranches</b>		<b>2</b>		<b>Elk Valley FOB</b>	<b>Elk Valley FOB</b>
<b>18</b>	<b>E-50253 MBM2 Southwest Equipment</b>		<b>2</b>		<b>Elk Valley FOB</b>	<b>Elk Valley FOB</b>
<b>19</b>	<b>E-50254 MBM2 LAP Contracting</b>		<b>2</b>		<b>Elk Valley FOB</b>	<b>Elk Valley FOB</b>
<b>20</b>	<b>O-50277 SOFR</b>	<b>Brent Johnson</b>	<b>1</b>	<b>9/17</b>	<b>Elk Valley FOB</b>	<b>Elk Valley FOB</b>
<b>21</b>	<b>O-50013 Medic 1</b>	<b>Joel Bower</b>	<b>1</b>	<b>9/10</b>	<b>Lake Selmac ICP</b>	<b>Elk Valley FOB</b>
<b>22</b>	<b>O-633 EMT 9</b>	<b>Dillon Wadhams</b>	<b>1</b>	<b>9/16</b>	<b>Lake Selmac ICP</b>	<b>Elk Valley FOB</b>
		<b>Meal count</b>	<b>35</b>			
7. Control Operations: <b>Task:</b> Scout and assess primary and alternate line locations. <b>Purpose:</b> To minimize impact of fire to the communities of Smith River and Brookings. <b>End state:</b> Impacts to the communities of Smith River and Brookings have been minimized.						
8. Special Instructions:						
9. Division/Group Communication Summary						
<b>See Communications Plan</b>						
Prepared by (Resource Unit Ldr) <i>Meredith Butcher/Carolyn Zanotto</i>		Approved by (Planning Sect. Ch.) <i>Aileen Nichols</i>		Date <b>09/04/2023</b>	Time <b>2000</b>	

<b>DIVISION ASSIGNMENT LIST</b>			1. Branch <b>VIII</b>		2. Division <b>F</b>	
3. Incident Name <b>Smith River Complex North</b>			4. Operational Period Date: <b>09/05/2023</b> Time: <b>0600-2200</b>			
5. Operations Personnel						
Operations Chief		<b>John Spencer</b>		Division Supervisor		<b>Jason Bunker Josh Morris-t</b>
Safety Officer		<b>Ray Hershey</b>		Air Attack		
6. Resources Assigned this Period						
	Strike Team/Task Force/Resource Designator	Leader	# Persons	LWD	Drop Off PT./Time	Pick Up PT./Time
1	<b>O-50159 TFLD</b>	<b>Jacob Miller</b>	<b>1</b>	<b>9/9</b>	<b>Elk Valley FOB</b>	<b>Elk Valley FOB</b>
2	<b>O-50141 TFLD - t</b>	<b>Henry Mott</b>	<b>1</b>	<b>9/9</b>	<b>Elk Valley FOB</b>	<b>Elk Valley FOB</b>
3						
4	<b>O-50098 FMOD Top Notch</b>	<b>Lucas Maxwell</b>	<b>2</b>	<b>9/7</b>	<b>Elk Valley FOB</b>	<b>Elk Valley FOB</b>
5						
6	<b>**E-399 ENG6 Allen Fire</b>	<b>Pete Allen</b>	<b>3</b>	<b>9/9</b>	<b>Elk Valley FOB</b>	<b>Elk Valley FOB</b>
7	<b>**E-50238 ENG5 Stone Mountain</b>	<b>Harris Toya</b>	<b>3</b>	<b>9/14</b>	<b>Elk Valley FOB</b>	<b>Elk Valley FOB</b>
8	<b>**E-50145 ENG6 BIA 0463</b>	<b>Spencer Washakie</b>	<b>3</b>	<b>9/9</b>	<b>Elk Valley FOB</b>	<b>Elk Valley FOB</b>
9	<b>E-50252 WTS2 Table Mtn Forestry</b>		<b>1</b>		<b>Elk Valley FOB</b>	<b>Elk Valley FOB</b>
10						
11	<b>E-50192 CHP2 Archer Mtn</b>	<b>Reuben Germain</b>	<b>3</b>	<b>9/11</b>	<b>Elk Valley FOB</b>	<b>Elk Valley FOB</b>
12	<b>E-50217 SKD1 Pacific Ridgeline</b>	<b>Aaron Miller</b>	<b>2</b>	<b>9/14</b>	<b>Lake Selmac ICP</b>	<b>Elk Valley FOB</b>
13	<b>E-50034 MBM1 Upper Valley</b>	<b>James Kruckeberg</b>	<b>2</b>	<b>9/6</b>	<b>Lake Selmac ICP</b>	<b>Elk Valley FOB</b>
14	<b>E-50189 FEL1 McKellar Tree Service</b>	<b>Brett Strong</b>	<b>2</b>	<b>9/14</b>	<b>Lake Selmac ICP</b>	<b>Elk Valley FOB</b>
15	<b>E-50069 FEL1 Nash Contracting</b>	<b>Travis Taruscio</b>	<b>2</b>	<b>9/6</b>	<b>Lake Selmac ICP</b>	<b>Elk Valley FOB</b>
16	<b>E-50246 DZR3 Traffic &amp; Construction</b>		<b>2</b>		<b>Elk Valley FOB</b>	<b>Elk Valley FOB</b>
17	<b>E-50039 DZR2 Barry Brown</b>	<b>Ed Machuse</b>	<b>3</b>	<b>9/17</b>	<b>Lake Selmac ICP</b>	<b>Elk Valley FOB</b>
18	<b>E-50250 GRD1 Dudleys' Excavating</b>		<b>2</b>		<b>Elk Valley FOB</b>	<b>Elk Valley FOB</b>
19						
20	<b>O-50277 SOFR</b>	<b>Brent Johnson</b>	<b>1</b>	<b>9/17</b>	<b>Elk Valley FOB</b>	<b>Elk Valley FOB</b>
21	<b>O-50259 Medic 7</b>	<b>Cody Gilmore</b>	<b>1</b>	<b>9/10</b>	<b>Lake Selmac ICP</b>	<b>Elk Valley FOB</b>
22	<b>O-50260 EMT 7</b>	<b>Lauren Burton</b>	<b>1</b>	<b>9/15</b>	<b>Lake Selmac ICP</b>	<b>Elk Valley FOB</b>
23	<b>E-50259 AMBO 5</b>	<b>Shanna Cramer</b>	<b>1</b>	<b>9/17</b>	<b>Lake Selmac ICP</b>	<b>Elk Valley FOB</b>
		<b>Meal count</b>	<b>35</b>			
7. Control Operations: <b>Task:</b> Scout and assess alternate line locations using the 1107 road from the California border north to the Chetco River. <b>Purpose:</b> To minimize impact of fire to the communities of Smith River and Brookings. <b>End state:</b> Impacts to the communities of Smith River and Brookings have been minimized.						
8. Special Instructions:						
9. Division/Group Communication Summary <b>See Communications Plan</b>						
Prepared by (Resource Unit Ldr) <i>Meredith Butcher/Carolyn Zanotto</i>		Approved by (Planning Sect. Ch.) <i>Aileen Nichols</i>		Date <b>09/04/2023</b>	Time <b>2000</b>	



<b>DIVISION ASSIGNMENT LIST</b>			1. Branch <b>VIII</b>		2. Division <b>G</b>	
3. Incident Name <b>Smith River Complex North</b>			4. Operational Period Date: <b>09/05/2023</b> Time: <b>0600-2200</b>			
5. Operations Personnel						
Operations Chief		<b>John Spencer</b>		Division Supervisor		<b>Jesse Stone Billy Turner-t</b>
Safety Officer		<b>Ray Hershey</b>		Air Attack		
6. Resources Assigned this Period						
	Strike Team/Task Force/Resource Designator	Leader	# Persons	LWD	Drop Off PT./Time	Pick Up PT./Time
1						
2						
3						
4						
5						
6						
7						
8						
9						
10						
11						
12						
13						
14						
15						
16						
17						
18						
19						
20						
21						
22						
		<b>Meal count</b>				
7. Control Operations: <b>Task:</b> Continue tactical firing operations from Div H to the southwest as conditions allow, utilizing Hotel resources. <b>Purpose:</b> To stop fire progression to the west. <b>End state:</b> All incident control objectives are met.						
8. Special Instructions:						
9. Division/Group Communication Summary						
<b>See Communications Plan</b>						
Prepared by (Resource Unit Ldr) <i>Meredith Butcher/Carolyn Zanotto</i>			Approved by (Planning Sect. Ch.) <i>Aileen Nichols</i>		Date <b>09/04/2023</b>	Time <b>2000</b>

<b>DIVISION ASSIGNMENT LIST</b>				1. Branch <b>X</b>	2. Division <b>H</b>	
3. Incident Name <b>Smith River Complex North</b>				4. Operational Period Date: <b>09/05/2023</b> Time: <b>0600-2200</b>		
5. Operations Personnel						
Operations Chief		<b>John Spencer</b>		Division Supervisor		<b>Anna Graves</b>
Safety Officer		<b>Ray Hershey</b>		Air Attack		
6. Resources Assigned this Period						
Strike Team/Task Force/Resource Designator		Leader	# Persons	LWD	Drop Off PT./Time	Pick Up PT./Time
<b>1</b>	<b>O-50121 HEQB</b>	<b>Andy Bumgarner</b>	<b>1</b>	<b>9/8</b>	<b>Lake Selmac ICP</b>	<b>Lake Selmac ICP</b>
<b>2</b>						
<b>3</b>	<b>O-50096 FMOD C&amp;K Wildland Fire</b>	<b>T.D. Woodruff</b>	<b>2</b>	<b>9/6</b>	<b>Lake Selmac ICP</b>	<b>Lake Selmac ICP</b>
<b>4</b>						
<b>5</b>	<b>C-50039 CRW1 Mad River IHC</b>	<b>Erick Esquivel</b>	<b>21</b>	<b>9/6</b>	<b>Lake Selmac ICP</b>	<b>Lake Selmac ICP</b>
<b>6</b>	<b>C-50036 CR2I Kern Valley IHC</b>	<b>Kyle Clendenen</b>	<b>19</b>	<b>9/9</b>	<b>Lake Selmac ICP</b>	<b>Lake Selmac ICP</b>
<b>7</b>						
<b>8</b>	<b>E-50203 SKG1 Rim Rock</b>	<b>Jon Allen</b>	<b>2</b>	<b>9/12</b>	<b>Lake Selmac ICP</b>	<b>Lake Selmac ICP</b>
<b>9</b>						
<b>10</b>	<b>Pacific Power Task Force</b>	<b>Anna Arritola</b>	<b>5</b>		<b>No meals</b>	
<b>11</b>						
<b>12</b>	<b>O-50105 SOF2</b>	<b>Larry Wright</b>	<b>1</b>	<b>9/14</b>	<b>Lake Selmac ICP</b>	<b>Lake Selmac ICP</b>
<b>13</b>	<b>E-50086 AMBO 3</b>	<b>Darren Hearn</b>	<b>2</b>	<b>9/8</b>	<b>Lake Selmac ICP</b>	<b>Lake Selmac ICP</b>
<b>14</b>	<b>E-50097 Medic 22</b>	<b>Chris Hardesty</b>	<b>2</b>	<b>9/15</b>	<b>Lake Selmac ICP</b>	<b>Lake Selmac ICP</b>
<b>15</b>	<b>E-50015 REMS1</b>	<b>Sorrell</b>	<b>4</b>	<b>9/5</b>	<b>Lake Selmac ICP</b>	<b>Lake Selmac ICP</b>
<b>16</b>						
<b>17</b>						
<b>18</b>						
<b>19</b>						
<b>20</b>						
<b>21</b>						
<b>22</b>						
		<b>Meal count</b>	<b>55</b>			
7. Control Operations: <b>Task:</b> Continue tactical firing operations to H13 as conditions allow. <b>Purpose:</b> Minimize impacts to communities and infrastructure to the north and east and keep fire west of the 4402 Rd. <b>End state:</b> Impacts have been minimized to communities and infrastructure to the north and east.						
8. Special Instructions: REAFs Porter, Jones, Hughes, Saunders, Galuchie, Smith-Metok, Spindel, Burton, and Reha will contact DIVS upon entering and exiting their respective divisions.						
9. Division/Group Communication Summary						
<b>See Communications Plan</b>						
Prepared by (Resource Unit Ldr) <i>Meredith Butcher/Carolyn Zanotto</i>			Approved by (Planning Sect. Ch.) <i>Aileen Nichols</i>		Date <b>09/04/2023</b>	Time <b>2000</b>

<b>DIVISION ASSIGNMENT LIST</b>			1. Branch <b>X</b>		2. Division <b>I (pg1)</b>	
3. Incident Name <b>Smith River Complex North</b>			4. Operational Period Date: <b>09/05/2023</b> Time: <b>0600-2200</b>			
5. Operations Personnel						
Operations Chief		<b>John Spencer</b>		Division Supervisor		<b>Robert Boles Whitney Machado Silas Baffa-t</b>
Safety Officer		<b>Ray Hershey</b>		Air Attack		
6. Resources Assigned this Period						
	Strike Team/Task Force/Resource Designator	Leader	# Persons	LWD	Drop Off PT./Time	Pick Up PT./Time
1	<b>**O-50157 TFLD</b>	<b>David Deleon</b>	<b>1</b>	<b>9/11</b>	<b>Lake Selmac ICP</b>	<b>Lake Selmac ICP</b>
2	<b>**O-517 TFLD-t</b>	<b>Tony Bova</b>	<b>1</b>	<b>9/11</b>	<b>Lake Selmac ICP</b>	<b>Lake Selmac ICP</b>
3	<b>**E-50148 ENG6 Carbon Works</b>	<b>Alberta Medrano</b>	<b>3</b>	<b>9/10</b>	<b>Lake Selmac ICP</b>	<b>Lake Selmac ICP</b>
4	<b>**E-50152 ENG6 L&amp;A Wildfire</b>	<b>Larry Martinez</b>	<b>3</b>	<b>9/11</b>	<b>Lake Selmac ICP</b>	<b>Lake Selmac ICP</b>
5	<b>**E-50149 ENG4 COHO Forestry</b>	<b>Lonnie Harrison</b>	<b>3</b>	<b>9/10</b>	<b>Lake Selmac ICP</b>	<b>Lake Selmac ICP</b>
6	<b>**E-50052 ENG6 HB Forestry</b>	<b>Mike Misek</b>	<b>3</b>	<b>9/14</b>	<b>Lake Selmac ICP</b>	<b>Lake Selmac ICP</b>
7	<b>**E-50190 WTS2 Freshwater Delivery</b>	<b>Cole Broadbent</b>	<b>1</b>	<b>9/11</b>	<b>Lake Selmac ICP</b>	<b>Lake Selmac ICP</b>
8	<b>**E-50159 DZR3 Dirt Doctor</b>	<b>Steve Haight</b>	<b>2</b>	<b>9/9</b>	<b>Lake Selmac ICP</b>	<b>Lake Selmac ICP</b>
9	<b>**C-50023 CRW2 Firestorm</b>	<b>William Nerbonne</b>	<b>20</b>	<b>9/8</b>	<b>Lake Selmac ICP</b>	<b>Lake Selmac ICP</b>
10						
11	<b>O-50127 TFLD</b>	<b>Miranda Stuart</b>	<b>1</b>	<b>9/6</b>	<b>Lake Selmac ICP</b>	<b>Lake Selmac ICP</b>
12	<b>O-50088 TFLD-t</b>	<b>Grant Davis</b>	<b>1</b>	<b>9/5</b>	<b>Lake Selmac ICP</b>	<b>Lake Selmac ICP</b>
13	<b>O-50256 TFLD</b>	<b>Jason Miller</b>	<b>1</b>	<b>9/14</b>	<b>Lake Selmac ICP</b>	<b>Lake Selmac ICP</b>
14	<b>O-50070 STEN</b>	<b>Rich McIntyre</b>	<b>1</b>	<b>9/6</b>	<b>Lake Selmac ICP</b>	<b>Lake Selmac ICP</b>
15						
16	<b>O-50045 FMOD Toms Timber LLC</b>	<b>Tyler Pacheco</b>	<b>2</b>	<b>9/10</b>	<b>Lake Selmac ICP</b>	<b>Lake Selmac ICP</b>
17						
18	<b>C-50041 CR2I Firestorm</b>	<b>Daniel Slinde</b>	<b>18</b>	<b>9/10</b>	<b>Lake Selmac ICP</b>	<b>Lake Selmac ICP</b>
19	<b>C-50032 CRW2 North Pacific</b>	<b>Jose Garibay</b>	<b>20</b>	<b>9/8</b>	<b>Lake Selmac ICP</b>	<b>Lake Selmac ICP</b>
20	<b>C-50024 CRW2 Big Bark</b>	<b>TJ Hinder</b>	<b>20</b>	<b>9/7</b>	<b>Lake Selmac ICP</b>	<b>Lake Selmac ICP</b>
21						
22	<b>E-50154 ENG3 Superstition Fire</b>	<b>Brian Logsdon</b>	<b>3</b>	<b>9/10</b>	<b>Lake Selmac ICP</b>	<b>Lake Selmac ICP</b>
23	<b>E-50153 ENG3 NW Fire</b>	<b>Larry Bear</b>	<b>4</b>	<b>9/10</b>	<b>Lake Selmac ICP</b>	<b>Lake Selmac ICP</b>
		<b>Meal count</b>	<b>108</b>			
7. Control Operations: <b>Task:</b> Continue to secure and mop up fires edge. Continue to patrol communities on the southern end of the Illinois Valley. Support other divisions as needed. <b>Purpose:</b> Minimize fire impacts to private residences in the fire area. <b>End state:</b> Area to be protected is prepped and secure.						
8. Special Instructions: <b>** Indicates IA Resources</b> REAFs Saunders and Galuchie will contact DIVS upon entering and exiting their respective divisions.						
9. Division/Group Communication Summary <b>See Communications Plan</b>						
Prepared by (Resource Unit Ldr) <i>Meredith Butcher/Carolyn Zanotto</i>		Approved by (Planning Sect. Ch.) <i>Aileen Nichols</i>		Date <b>09/04/2023</b>	Time <b>2000</b>	

<b>DIVISION ASSIGNMENT LIST</b>				1. Branch <b>X</b>		2. Division <b>I (pg2)</b>	
3. Incident Name <b>Smith River Complex North</b>				4. Operational Period Date: <b>09/05/2023</b> Time: <b>0600-2200</b>			
5. Operations Personnel							
Operations Chief		<b>John Spencer</b>		Division Supervisor		<b>Robert Boles Whitney Machado Silas Baffa-t</b>	
Safety Officer		<b>Ray Hershey</b>		Air Attack			
6. Resources Assigned this Period							
Strike Team/Task Force/Resource Designator		Leader	# Persons	LWD	Drop Off PT./Time		Pick Up PT./Time
<b>1</b>	<b>E-50151 ENG6 Surprise Fire</b>	<b>Hap Reitz</b>	<b>3</b>	<b>9/10</b>	<b>Lake Selmac ICP</b>		<b>Lake Selmac ICP</b>
<b>2</b>	<b>E-50144 ENG6 Smithfield</b>	<b>Dustin Hooton</b>	<b>3</b>	<b>9/10</b>	<b>Lake Selmac ICP</b>		<b>Lake Selmac ICP</b>
<b>3</b>	<b>E-50147 ENG6 Bali-Son</b>	<b>Kevin Trapp</b>	<b>3</b>	<b>9/11</b>	<b>Lake Selmac ICP</b>		<b>Lake Selmac ICP</b>
<b>4</b>	<b>E-50141 ENG6 Griz One Firefighting</b>	<b>Shaun Berke</b>	<b>3</b>	<b>9/11</b>	<b>Lake Selmac ICP</b>		<b>Lake Selmac ICP</b>
<b>5</b>	<b>E-50150 ENG6 Mojave Valley</b>	<b>David Aragon</b>	<b>3</b>	<b>9/9</b>	<b>Lake Selmac ICP</b>		<b>Lake Selmac ICP</b>
<b>6</b>	<b>E-50143 ENG3 Wildland Fire Service</b>	<b>Damon Anderson</b>	<b>3</b>	<b>9/11</b>	<b>Lake Selmac ICP</b>		<b>Lake Selmac ICP</b>
<b>7</b>	<b>E-50142 ENG6 Rue Forest</b>	<b>Anthony Cunial</b>	<b>3</b>	<b>9/10</b>	<b>Lake Selmac ICP</b>		<b>Lake Selmac ICP</b>
<b>8</b>	<b>E-50257 ENG6 UMF 642</b>	<b>Zach Hyer</b>	<b>4</b>	<b>9/14</b>	<b>Lake Selmac ICP</b>		<b>Lake Selmac ICP</b>
<b>9</b>	<b>E-50036 WTS2 Lavenberg</b>	<b>Don Lavenberg</b>	<b>1</b>	<b>9/21</b>	<b>Lake Selmac ICP</b>		<b>Lake Selmac ICP</b>
<b>10</b>							
<b>11</b>	<b>O-50186 SOFR</b>	<b>Larry Welsh</b>	<b>1</b>	<b>9/11</b>	<b>Lake Selmac ICP</b>		<b>Lake Selmac ICP</b>
<b>12</b>	<b>O-50105 SOF2</b>	<b>Larry Wright</b>	<b>1</b>	<b>9/14</b>	<b>Lake Selmac ICP</b>		<b>Lake Selmac ICP</b>
<b>13</b>							
<b>14</b>	<b>O-50022 EMT 4</b>	<b>Jonathon Cahill</b>	<b>1</b>	<b>9/13</b>	<b>Lake Selmac ICP</b>		<b>Lake Selmac ICP</b>
<b>15</b>	<b>O-50032 EMT1</b>	<b>Lisa Johnson</b>	<b>1</b>	<b>9/11</b>	<b>Lake Selmac ICP</b>		<b>Lake Selmac ICP</b>
<b>16</b>	<b>O-50029 Medic 4</b>	<b>Chad Payletz</b>	<b>1</b>	<b>9/5</b>	<b>Lake Selmac ICP</b>		<b>Lake Selmac ICP</b>
<b>17</b>	<b>O-50027 Medic 6</b>	<b>Alex Vera</b>	<b>1</b>	<b>9/11</b>	<b>Lake Selmac ICP</b>		<b>Lake Selmac ICP</b>
<b>18</b>	<b>E-50098 Medic 23</b>	<b>Michael Weig</b>	<b>2</b>	<b>9/15</b>	<b>Lake Selmac ICP</b>		<b>Lake Selmac ICP</b>
<b>19</b>	<b>E-50085 AMBO 2</b>	<b>Lanee Forkner</b>	<b>2</b>	<b>9/14</b>	<b>Lake Selmac ICP</b>		<b>Lake Selmac ICP</b>
<b>20</b>							
		<b>Meal count</b>	<b>36</b>				
7. Control Operations: <b>Task:</b> Continue to secure and mop up fires edge. Continue to patrol communities on the southern end of the Illinois Valley. Support other divisions as needed. <b>Purpose:</b> Minimize fire impacts to private residences in the fire area. <b>End state:</b> Area to be protected is prepped and secure.							
8. Special Instructions: ** Indicates IA Resources REAFs Saunders and Galuchie will contact DIVS upon entering and exiting their respective divisions.							
9. Division/Group Communication Summary							
<b>See Communications Plan</b>							
Prepared by (Resource Unit Ldr) <i>Meredith Butcher/Carolyn Zanotto</i>			Approved by (Planning Sect. Ch.) <i>Aileen Nichols</i>			Date <b>09/04/2023</b>	Time <b>2000</b>

<b>DIVISION ASSIGNMENT LIST</b>			1. Branch <b>X</b>	2. Division <b>K</b>		
3. Incident Name <b>Smith River Complex North</b>			4. Operational Period Date: <b>09/05/2023</b> Time: <b>0600-2200</b>			
5. Operations Personnel						
Operations Chief		<b>John Spencer</b>		Division Supervisor		<b>Derrick Youngerman</b>
Safety Officer		<b>Ray Hershey</b>		Air Attack		
6. Resources Assigned this Period						
	Strike Team/Task Force/Resource Designator	Leader	# Persons	LWD	Drop Off PT./Time	Pick Up PT./Time
1	<b>O-50140 TFLD</b>	<b>Russ Macal</b>	<b>1</b>	<b>9/7</b>	<b>Lake Selmac ICP</b>	<b>Lake Selmac ICP</b>
2	<b>O-50117 TFLD</b>	<b>Craig Kostrzewski</b>	<b>1</b>	<b>9/8</b>	<b>Lake Selmac ICP</b>	<b>Lake Selmac ICP</b>
3	<b>O-50075 FMOD Cut Rite Inc</b>	<b>Scott Opheim</b>	<b>2</b>	<b>9/5</b>	<b>Lake Selmac ICP</b>	<b>Lake Selmac ICP</b>
4						
5	<b>C-50037 CRW1 Stanislaus IHC</b>	<b>Brandon Hull</b>	<b>23</b>	<b>9/8</b>	<b>Lake Selmac ICP</b>	<b>Lake Selmac ICP</b>
6	<b>C-50044 CRW1 Del Rosa IHC</b>	<b>Brett Pascale</b>	<b>21</b>	<b>9/14</b>	<b>Lake Selmac ICP</b>	<b>Lake Selmac ICP</b>
7	<b>C-50043 CR2I Breckenridge</b>	<b>Corey Carrea</b>	<b>18</b>	<b>9/15</b>	<b>Lake Selmac ICP</b>	<b>Lake Selmac ICP</b>
8	<b>C-50040 CR2I Hat Creek</b>	<b>Jake Fitzgerald</b>	<b>18</b>	<b>9/10</b>	<b>Lake Selmac ICP</b>	<b>Lake Selmac ICP</b>
9	<b>C-50030 CRW2 Alpine Services</b>	<b>Samir Mohamed</b>	<b>20</b>	<b>9/8</b>	<b>Lake Selmac ICP</b>	<b>Lake Selmac ICP</b>
10	<b>C-50031 CRW2 Willamette Valley</b>	<b>Luis Cervantes</b>	<b>20</b>	<b>9/9</b>	<b>Lake Selmac ICP</b>	<b>Lake Selmac ICP</b>
11	<b>C-50035 CRW2 GE Forestry</b>	<b>Raul Chaparro</b>	<b>20</b>	<b>9/9</b>	<b>Lake Selmac ICP</b>	<b>Lake Selmac ICP</b>
12						
13	<b>E-50046 ENG3 Grande Ronde Tribes</b>	<b>Brett Daniels</b>	<b>5</b>	<b>9/6</b>	<b>Lake Selmac ICP</b>	<b>Lake Selmac ICP</b>
14	<b>E-50050 ENG3 TMFR Brush</b>	<b>Scott Fenley</b>	<b>4</b>	<b>9/5</b>	<b>Lake Selmac ICP</b>	<b>Lake Selmac ICP</b>
15	<b>E-50037 WTS2 Lavenbarg</b>	<b>Don Lavenbarg</b>	<b>1</b>	<b>9/19</b>	<b>Lake Selmac ICP</b>	<b>Lake Selmac ICP</b>
16	<b>E-50083 FEL1 Ponsse Miller Timber</b>	<b>Scott McElhaney</b>	<b>2</b>	<b>9/6</b>	<b>Lake Selmac ICP</b>	<b>Lake Selmac ICP</b>
18	<b>E-50084 FEL1 Axsus Enterprises</b>	<b>Dusty Rieckers</b>	<b>2</b>	<b>9/9</b>	<b>Lake Selmac ICP</b>	<b>Lake Selmac ICP</b>
19						
20	<b>O-50187 SOF2</b>	<b>Tim Benedict</b>	<b>1</b>	<b>9/12</b>	<b>Lake Selmac ICP</b>	<b>Lake Selmac ICP</b>
21	<b>O-50186 SOFR</b>	<b>Larry Welsh</b>	<b>1</b>	<b>9/11</b>	<b>Lake Selmac ICP</b>	<b>Lake Selmac ICP</b>
22	<b>O-50025 EMT 2</b>	<b>James Henson</b>	<b>1</b>	<b>9/13</b>	<b>Lake Selmac ICP</b>	<b>Lake Selmac ICP</b>
23	<b>O-50302 EMT 8</b>	<b>Ryan Nohrenberg</b>	<b>1</b>	<b>9/10</b>	<b>Lake Selmac ICP</b>	<b>Lake Selmac ICP</b>
24	<b>O-50030 Medic 3</b>	<b>Stephan Smith</b>	<b>1</b>	<b>9/12</b>	<b>Lake Selmac ICP</b>	<b>Lake Selmac ICP</b>
25	<b>E-50099 Medic 24</b>	<b>Cody Baker</b>	<b>2</b>	<b>9/09</b>	<b>Lake Selmac ICP</b>	<b>Lake Selmac ICP</b>
26	<b>E-50161 AMBO 4</b>	<b>Charlie Campbell</b>	<b>2</b>	<b>9/10</b>	<b>Lake Selmac ICP</b>	<b>Lake Selmac ICP</b>
27	<b>O-50123 REMS2</b>	<b>Brady Graham</b>	<b>2</b>	<b>9/8</b>	<b>Lake Selmac ICP</b>	<b>Lake Selmac ICP</b>
		<b>Meal count</b>	<b>166</b>			
7. Control Operations: <b>Task:</b> Complete fireline from Little Sanger Peak to Chicago Creek Rd. Prep the 18N07 Rd from Little Sanger Peak to Young's trailhead. Control remaining heat west of Hwy 199. <b>Purpose:</b> Keep fire west of Hwy 199, south of 18N11 and west 18N02. <b>End state:</b> Impacts have been minimized to critical infrastructure and communities to the north and east. Hwy 199 is secure and passable.						
8. Special Instructions: REAFs Bucher, Mero, Burton, and Spendel will contact DIVS upon entering and exiting their respective divisions.						
9. Division/Group Communication Summary						
<b>See Communications Plan</b>						
Prepared by (Resource Unit Ldr) <i>Meredith Butcher/Carolyn Zanotto</i>			Approved by (Planning Sect. Ch.) <i>Aileen Nichols</i>		Date <b>09/04/2023</b>	Time <b>2000</b>

<b>DIVISION ASSIGNMENT LIST</b>			1. Branch <b>X</b>		2. Group <b>Contingency Group</b>	
3. Incident Name <b>Smith River Complex North</b>			4. Operational Period Date: <b>09/05/2023</b> Time: <b>0600-2200</b>			
5. Operations Personnel						
Operations Chief		<b>John Spencer</b>		Division Supervisor		<b>Rob Fore</b>
Safety Officer		<b>Ray Hershey</b>		Air Attack		
6. Resources Assigned this Period						
Strike Team/Task Force/Resource Designator		Leader	# Persons	LWD	Drop Off PT./Time	Pick Up PT./Time
1						
2						
3						
4						
5						
6						
7						
8						
9						
10						
11						
12						
13						
14						
15						
16						
17						
18						
19						
20						
21						
22						
		<b>Meal count</b>				
7. Control Operations: <b>Task:</b> Patrol and download information with incoming DIVS. <b>Purpose:</b> Minimize impacts to the communities of O'Brien and Cave Junction to the east. <b>End state:</b> Impacts to the communities of O'Brien and Cave Junction have been minimized.						
8. Special Instructions: REAFs Saunders and Gluchie will contact DIVS upon entering and exiting their respective divisions.						
9. Division/Group Communication Summary <b>See Communications Plan</b>						
Prepared by (Resource Unit Ldr) <i>Meredith Butcher/Carolyn Zanotto</i>		Approved by (Planning Sect. Ch.) <i>Aileen Nichols</i>		Date <b>09/04/2023</b>		Time <b>2000</b>

<b>DIVISION ASSIGNMENT LIST</b>			1. Branch <b>X</b>		2. Division <b>Staging</b>	
3. Incident Name <b>Smith River Complex North</b>			4. Operational Period Date: <b>09/05/2023</b> Time: <b>0600-2200</b>			
5. Operations Personnel						
Operations Chief		<b>John Spencer</b>		Staging Manager		
Safety Officer		<b>Ray Hershey</b>		Air Attack		
6. Resources Assigned this Period						
Strike Team/Task Force/Resource Designator		Leader	# Persons	LWD	Drop Off PT./Time	Pick Up PT./Time
<b>1</b>	<b>O-50146 TFLD</b>	<b>Jesse Holguin</b>	<b>1</b>	<b>9/10</b>	<b>Lake Selmac ICP</b>	<b>Lake Selmac ICP</b>
<b>2</b>	<b>O-50147 TFLD-t</b>	<b>Marcos Munoz</b>	<b>1</b>	<b>9/10</b>	<b>Lake Selmac ICP</b>	<b>Lake Selmac ICP</b>
<b>3</b>						
<b>4</b>	<b>E-50033 MBM1 Cate Land Inc.</b>	<b>E.C. Cates</b>	<b>2</b>	<b>9/7</b>	<b>Lake Selmac ICP</b>	<b>Lake Selmac ICP</b>
<b>5</b>						
<b>6</b>	<b>O-50210 SOFR</b>	<b>Josh Nuttall</b>	<b>1</b>	<b>9/5</b>	<b>Lake Selmac ICP</b>	<b>Lake Selmac ICP</b>
<b>7</b>	<b>O-50023 EMT 3</b>	<b>Trevor Brant</b>	<b>1</b>	<b>9/5</b>	<b>Lake Selmac ICP</b>	<b>Lake Selmac ICP</b>
<b>8</b>	<b>O-50224 EMT 6</b>	<b>Nathan Schaeffer</b>	<b>1</b>	<b>9/6</b>	<b>Lake Selmac ICP</b>	<b>Lake Selmac ICP</b>
<b>9</b>						
<b>10</b>						
<b>11</b>						
<b>12</b>						
<b>13</b>						
<b>14</b>						
<b>15</b>						
<b>16</b>						
<b>17</b>						
<b>18</b>						
<b>19</b>						
<b>20</b>						
<b>21</b>						
<b>22</b>						
<b>23</b>						
<b>24</b>						
		<b>Meal count</b>	<b>7</b>			
7. Control Operations: <b>Task:</b> Remain ready and available for divisions as needed. <b>Purpose:</b> To assist divisions as needed to complete missions as appropriate. <b>End state:</b> Support suppression efforts as needed to protect communities.						
8. Special Instructions:						
9. Division/Group Communication Summary <b>See Communications Plan</b>						
Prepared by (Resource Unit Ldr) <i>Meredith Butcher/Carolyn Zanotto</i>		Approved by (Planning Sect. Ch.) <i>Aileen Nichols</i>		Date <b>09/04/2023</b>	Time <b>2000</b>	

<b>DIVISION ASSIGNMENT LIST</b>				1. Branch <b>X</b>		2. Division <b>Night</b>	
3. Incident Name <b>Smith River Complex North</b>				4. Operational Period Date: <b>09/05/2023 – 09/06/2023</b> Time: <b>1700-0900</b>			
5. Operations Personnel							
Operations Chief		<b>John Spencer</b>		Division Supervisor			
Safety Officer		<b>Ray Hershey</b>		Air Attack			
6. Resources Assigned this Period							
Strike Team/Task Force/Resource Designator		Leader	# Persons	LWD	Drop Off PT./Time		Pick Up PT./Time
<b>1</b>	<b>O-50118 TFLD</b>	<b>Brandon Rea</b>	<b>1</b>	<b>9/8</b>	<b>Lake Selmac ICP</b>		<b>Lake Selmac ICP</b>
<b>2</b>							
<b>3</b>	<b>E-50047 ENG3 J3</b>	<b>Matt Wilson</b>	<b>3</b>	<b>9/14</b>	<b>Lake Selmac ICP</b>		<b>Lake Selmac ICP</b>
<b>4</b>	<b>E-373 ENG3 Martinez</b>	<b>Mike Jaramillo</b>	<b>3</b>	<b>9/14</b>	<b>Lake Selmac ICP</b>		<b>Lake Selmac ICP</b>
<b>5</b>	<b>E-443 ENG3 BLM 8335</b>	<b>Mike Peak</b>	<b>5</b>	<b>9/9</b>	<b>Lake Selmac ICP</b>		<b>Lake Selmac ICP</b>
<b>6</b>	<b>E-247 ENG6 Oregon Woods</b>	<b>Jessica Wilcox</b>	<b>3</b>	<b>9/11</b>	<b>Lake Selmac ICP</b>		<b>Lake Selmac ICP</b>
<b>7</b>	<b>E-50106 ENG6 BLR-5161</b>	<b>Jeremy Bollin</b>	<b>3</b>	<b>9/6</b>	<b>Lake Selmac ICP</b>		<b>Lake Selmac ICP</b>
<b>8</b>							
<b>9</b>							
<b>10</b>	<b>E-50244 AMBO 6</b>	<b>Jason Eyerly</b>	<b>2</b>	<b>9/18</b>	<b>Lake Selmac ICP</b>		<b>Lake Selmac ICP</b>
<b>11</b>							
<b>12</b>							
<b>13</b>							
<b>14</b>							
<b>15</b>							
<b>16</b>							
<b>17</b>							
<b>18</b>							
<b>19</b>							
<b>20</b>							
<b>21</b>							
<b>22</b>							
<b>23</b>							
<b>24</b>							
		<b>Meal count</b>	<b>20</b>				
7. Control Operations: <b>Task:</b> Patrol as needed. <b>Purpose:</b> Secure primary and alternate lines to keep the fire from impacting communities. <b>End state:</b> Impacts have been minimized to communities and infrastructure.							
8. Special Instructions:							
9. Division/Group Communication Summary							
<b>See Communications Plan</b>							
Prepared by (Resource Unit Ldr) <i>Meredith Butcher/Carolyn Zanotto</i>			Approved by (Planning Sect. Ch.) <i>Aileen Nichols</i>			Date <b>09/04/2023</b>	Time <b>2000</b>



AIR OPERATIONS SUMMARY ICS-220										Time Prepared		Date Prepared		Prepared By					
Incident Name / Number		Sunrise	Startup	Cutoff	Sunset	Shutdown				Operational Period - Date		Operational Period - Time							
SMITH RIVER COMPLEX - CA-SRF-000968		6:44	7:14	19:12	7:42:00 PM	20:12				Monday, September 4, 2023		Galen Young/Steve Markason							
<b>General Remarks, Safety Notes, Hazards, Air Operations Special Equipment, etc.</b> TRACK ALL DIPSITE LOCATIONS / NUMBER OF DIPS / GALLONS TAKEN. TRACK ALL DROP LOCATIONS / NUMBER OF DROPS / GALLONS DROPPED. COLLECT ALL GPS DATA IN DEGREES, MINUTES, DECIMAL MINUTES FORMAT.  AVOID Aerial Application of Retardant / Foam / Agent within 300' of Waterways, Bodies of Water, etc. If Retardant / Foam / Agent is Dropped Within These Areas Immediately Notify the AOB and Provide the Following Information: Lat / Long, Estimated Number of Gallons and a Map Detailing The Area.										<b>Helibase Information</b> Name Brookings Latitude 42.04.44 Longitude 124.17.39  Name Cave Latitude 42.06.250 Longitude 123.40.916		<b>TFR information</b> Request # A-160 Rectangle NM Altitude: 10,000' MSL Centerpoint: Multi Lat Multi Long NOTAMS: 3/4936 Frequency 126.0750 <a href="http://tfr.faa.gov/tfr2/list.html">http://tfr.faa.gov/tfr2/list.html</a>		<b>Rescue Ship Information</b> Day Helist Name Kern H-407 Phone 24hr Bell 205 Location Yreka Benton Bell 212 Benton Request Procedure for These Aircraft: See Below for OR Aircraft See Medical Plan For Additional Info					
Record % Buckets Dropped in Cost Summaries Notes: % Fed and % Private																			
Frequencies	TX	Tone	RX	Tone	AM / FM	Position	Name	Phone	Trainee/Helibase	Phone									
Command-South (Linked)	See South 205				FM	SOUTH AOB	Galen Young	575-574-8720											
Command-North (Linked)	See North 205				FM	SOUTH ASGS	Kent Wedin	575-538-1075											
AIR / GROUND - TACTICAL	169.4875	0.0000	169.4875	0.0000	AM	SOUTH ASGS	Chuck Turner	623-208-9843											
AIR/AIR ROTARY WING	123.7250	0.0000	123.7250	0.0000	AM	HEBM	George Leite (Cave)	360-581-8428	Cave Helibase	208-891-6878									
TFR	126.0750	0.0000	126.0750	0.0000	AM	HEBM	Natalie Bench (Brookings)	928-358-0963	Cave Email	ivhb2023@gmail.com									
FW AIR TACTICS	173.7000	0.0000	173.7000	0.0000	FM	HLCO	Josh Hutchison	916-709-6747	Tyler Williams	530-310-3510									
AIR/GROUND COMMAND	173.8500	0.0000	173.8500	0.0000	AM	HLCO	Bill Lampert	530-598-4128	Andre Evans	805 319 0494									
VMED 29-MEDICAL North	155.3475	156.7	155.3475	156.7	AM	ATGS	Rick Thompson	970-209-6989	Matt Oakleaf (Q)	208-995-6042									
TOLC	168.1375	0.0000	168.1375	0.0000	FM	ATGS	Zac Sullivan	970-744-8937											
CALCORD - MEDICAL South	156.0750	156.7 (6)	156.0750	156.7 (6)	FM	UR31	Steve Ramaekers	208-473-8708											
AIRGUARD - Emergency Only	168.6250	110.9 (1)	168.6250	0.0000	FM	NORTH AOB	Steve Markason	307-690-5185											
*See IAP for IA 205's*						NORTH ASGS	Stefan Goldstein (T)	760-937-6512											
HELICOPTERS ( Use page 2 if Needed )																			
FAA #	Type	Make/Model	Helibase	Avail	Start	Remarks	FAA #	Type	Make/Model	Helibase	Avail	Start	Remarks						
HB-16FH	1	UH-60	Cave	0800	0830	LL BUCKET	HB-625CK	1	S-61N	Merlin	0800	0830	LL TANK						
HB-534VG	1	UH-60	Cave	0800	0830	LL BUCKET	HT-917	1	S-61	Merlin	0800	0830	LL TANK						
HB-391SH	1	UH-60	Cave	0800	0830	LL BUCKET	H-18BH	3	Bell 407	Cave	0800	0830	HLCO						
HB-699RH	1	KMAX	Cave	0800	0830	LL BUCKET	H-132BH	3	AS-350B3	Merlin	0800	0830	PAX/RECON/LL/PSD						
H-527	2	Bell 212	Cave	0800	0830	LL BUCKET	H-942AE	3	AS-350B3E	Brookings	0800	0830	PAX/RECON/LL/PSD						
UR31	3	Alta X	Gasquet	0800	0830	IR/PSD (Ramaekers Mod.)													
UR33	3	Alta X	Gasquet	0800	0830	IR (Eagle Lake WFM)													
UR25	3	DJI M600	DIVD	0800	0830	IR/PSD (Lakeview IHC)													
UF1	1	Aerovel Flex	Gasquet	1700	0900	IR (Shroud Module)													
<b>SOUTH MEDICAL A/C</b>																			
TBD	3	MH-65	Humboldt			Coast Guard	NORTH	MEDICAL A/C											
H-902	2	UH1	Kneeland			Cal Fire	695	1	HH-60M	Roseburg			OR National Guard - 24 hours						
H-14	3	A-Star B3	Redding			CHP	H-38HX	3	AS-250B3	Sun River			Shorthaul - 187 nm						
<b>FIXED WING ( Use Page 2 if Needed )</b>																			
FAA #	Type	Make/Model	Base	Avail	Start	Remarks	FAA #	Type	Make/Model	Base	Avail	Start	Remarks						
N-7MZ	1	C-501	RDD	0800	0830	ATGS (RDD)	N-688TM	1	AC-680V	MED	0800	0830	ATGS (MFR)						

# INCIDENT RADIO COMMUNICATIONS PLAN (ICS 205)

## Controlled Unclassified Information//Basic

<b>1. Incident Name:</b>		<b>2. Date/Time Prepared:</b>		<b>3. Operational Period:</b>						
<b>BRANCH VIII (NSR BR08)</b> SMITH RIVER COMPLEX - NORTH		Date: 09/04/2023 Time: 17:20		Date/Time From: 09/05/2023 07:00 Date/Time To: 09/06/2023 07:00						
<b>4. Basic Radio Channel Use:</b>										
Zone Group	Ch #	Function	Channel Name/Trunked Radio System Talkgroup	Assignment	RX Freq	RX Tone/NAC	TX Freq	TX Tone/NAC	Mode (A, D, or M)	Remarks
	1	TACTICAL	TAC 1	RESERVED	168.0500	162.2	168.0500	162.2	A	RESERVED
	2	TACTICAL	TAC 2	RESERVED	168.2000	162.2	168.2000	162.2	A	RESERVED
	3	TACTICAL	TAC 3	DIV F	168.6000	162.2	168.6000	162.2	A	
	4	TACTICAL	TAC 4	DIV E	166.7250	162.2	166.7250	162.2	A	
	5	TACTICAL	TAC 5	RESERVED	166.7750	162.2	166.7750	162.2	A	RESERVED
	6	TACTICAL	TAC 6	DIV G	168.2500	162.2	168.2500	162.2	A	
	7	CMD	CMD 7	ALL DIV	172.9875	162.2	165.0500	162.2	A	BOLAN MOUNTAIN (E)
	8	CMD	CMD 8	ALL DIV	170.3000	162.2	164.0000	162.2	A	8 DOLLAR MTN (ILLINOIS VLY)
	9	CMD	CMD 9	ALL DIV	169.0750	162.2	162.4125	162.2	A	MONKEY CR RIDGE (S)
	10	CMD	CMD 10	ALL DIV	173.0500	162.2	164.8500	162.2	A	VULCAN PK (N)
	11	TACTICAL	NIFC T1	DIV D / NIGHT	168.0500	131.8	168.0500	131.8	A	S RESOURCES INTEROP
	12	TACTICAL	VTAC 11	DIV/BRANCH INTEROP-TAC	151.1375	156.7	151.1375	156.7	A	INTEROP > BRANCH-DIVISIONS
	13	AIR TO GROUND	A/G CMD	ALL DIVS	173.8500	000.0	173.8500	000.0	A	BRANCH AND DIVISION USE
	14	AIR TO GROUND	A/G TAC	ALL DIVS	169.4875	000.0	169.4875	000.0	A	AIR TO GROUND TACTICAL
	15	AIR MEDICAL	VMED 29	ALL DIVS	155.3475	156.7	155.3475	156.7	A	EMS AIR COORDINATION
	16	AIR TO GROUND	AIRGUARD	ALL DIVS	168.6250	000.0	168.6250	110.9	A	EMERGENCY AIRCRAFT CONTACT
<b>5. Special Instructions: COMMS NORTH PHONE #: 971-245-0253 (NORTH ONLY)</b>										
<b>6. Prepared By COML</b>										
				Name: Bruce Hanna						
				Signature: /s/ Bruce Hanna						
<b>ICS 205</b>										
				Date/Time: 9/04/2023 17:20						

# INCIDENT RADIO COMMUNICATIONS PLAN (ICS 205)

## Controlled Unclassified Information//Basic

<b>1. Incident Name:</b>		<b>2. Date/Time Prepared:</b>		<b>3. Operational Period:</b>						
<b>BRANCH X (NSR BR10)</b>		Date: 09/04/2023 Time: 17:20		Date/Time From: 09/05/2023 07:00	Date/Time To: 09/06/2023 07:00					
<b>SMITH RIVER COMPLEX - NORTH</b>										
<b>4. Basic Radio Channel Use:</b>										
Zone Group	Ch #	Function	Channel Name/Trunked Radio System Talkgroup	Assignment	RX Freq	RX Tone/NAC	TX Freq	TX Tone/NAC	Mode (A, D, or M)	Remarks
	1	TACTICAL	TAC 1	CONTINGENCY W	168.0500	192.8	168.0500	192.8	A	
	2	TACTICAL	TAC 2	DIV I / NIGHT I	168.2000	192.8	168.2000	192.8	A	DAY & NIGHT (INDIA)
	3	TACTICAL	TAC 3	DIV K	168.6000	192.8	168.6000	192.8	A	
	4	TACTICAL	TAC 4	RESERVED	166.7250	192.8	166.7250	192.8	A	RESERVED
	5	TACTICAL	TAC 5	DIV H / NIGHT H	166.7750	192.8	166.7750	192.8	A	DAY & NIGHT (HOTEL)
	6	TACTICAL	TAC 6	RESERVED	168.2500	192.8	168.2500	192.8	A	RESERVED
	7	CMD	CMD 7	ALL DIV	172.9875	162.2	165.0500	162.2	A	BOLAN MOUNTAIN (E)
	8	CMD	CMD 8	ALL DIV	170.3000	162.2	164.0000	162.2	A	8 DOLLAR MTN (ILLINOIS VLY)
	9	CMD	CMD 9	ALL DIV	169.0750	162.2	162.4125	162.2	A	MONKEY CR RIDGE (S)
	10	CMD	CMD 10	ALL DIV	173.0500	162.2	164.8500	162.2	A	VULCAN PK (N)
	11	TACTICAL	NIFC T4	DIV MM	166.7250	131.8	166.7250	131.8	A	S RESOURCE INTEROP
	12	TACTICAL	VTAC 11	DIV/BRANCH INTEROP-TAC	151.1375	156.7	151.1375	156.7	A	INTEROP > BRANCH-DIVISIONS
	13	AIR TO GROUND	A/G CMD	ALL DIVS	173.8500	000.0	173.8500	000.0	A	BRANCH AND DIVISION USE
	14	AIR TO GROUND	A/G TAC	ALL DIVS	169.4875	000.0	169.4875	000.0	A	AIR TO GROUND TACTICAL
	15	AIR MEDICAL	VMED 29	ALL DIVS	155.3475	156.7	155.3475	156.7	A	EMS AIR COORDINATION
	16	AIR TO GROUND	AIRGUARD	ALL DIVS	168.6250	000.0	168.6250	110.9	A	EMERGENCY AIRCRAFT CONTACT
<b>5. Special Instructions: COMMUNICATIONS NORTH PHONE NUMBER: 971-245-0253 (NORTH ONLY)</b>										
<b>6. Prepared By COML</b>				Name: Bruce Hanna				Signature: /s/ Bruce Hanna		
<b>ICS 205</b>				<b>IAP Page</b>				Date/Time: 9/04/2023 17:20		

# INCIDENT RADIO COMMUNICATIONS PLAN (ICS 205)

## Controlled Unclassified Information//Basic

1. Incident Name:		2. Date/Time Prepared:		3. Operational Period:							
<b>INITIAL ATTACK ZONE</b> SMITH RIVER COMPLEX - NORTH		Date: 09/04/2023 Time: 12:32	Date/Time From: 09/05/23 07:00	Date/Time To: 09/06/23 07:00							
<b>4. Basic Radio Channel Use:</b>											
Zone Group	Ch #	Function	Channel Name/Trunked Radio System Talkgroup	Assignment	RX Freq	RX Tone/NAC	TX Freq	TX Tone/NAC	Mode (A, D, or M)	Remarks	
IA	1	CMD	MONKEY	IA	172.3750	000.0	164.1750	110.9	A	6 RIVERS MONKEY RIDGE	
IA	2	CMD	ONION	IA	171.3875	67.0	164.9625	173.8	A	RSF ONION	
IA	3	CMD	FIDDLER	IA	171.3875	67.0	164.9625	179.9	A	RSF FIDDLER	
IA	4	CMD	BOLAN	IA	171.3875	67.0	164.9625	186.2	A	RSF BOLAN	
IA	5	CMD	MT EMILY	IA	170.3750	67.0	164.1250	118.8	A	RSF GOLD BEACH (EMILY)	
IA	6	CMD	ODF SEXTON	IA	151.1450	000.0	159.2850	179.9	A	ODF SEXTON	
IA	7	CMD	ODF GRAY BK	IA	151.1450	000.0	159.2850	151.4	A	ODF GREY BACK	
IA	8	TAC	ODF RED	IA	151.3400	000.0	151.3400	156.7	A	ODF RED	
IA	9	A/G	ODF WHITE	IA	151.3100	000.0	151.3100	156.7	A	ODF WHITE A/G	
IA	10	TAC	ODF RVT	IA	159.2400	000.0	159.2400	156.7	A	ODF RVT	
IA	11	A/G	FS A/G51	IA	168.3125	000.0	168.3125	000.0	A	A/G 51	
IA	12	A/G	FS A/G62	IA	169.3625	000.0	169.3625	000.0	A	A/G 62	
IA	13	A/G	A/G CMD	IA	173.8500	000.0	173.8500	000.0	A		
IA	14	A/G	A/G TAC	IA	169.4875	000.0	169.4875	000.0	A		
IA	15	A/G	VMED 29	IA	155.3475	156.7	155.3475	156.7	A	EMS AIR COORDINATION	
IA	16	A/G	CAL CORD	IA	156.0750	156.7	156.0750	156.7	A	EMS AIR CORD	
<b>5. Special Instructions: COMMUNICATIONS NORTH PHONE NUMBER: 971-245-0253 (NORTH ONLY)</b>											
<b>6. Prepared By</b> (Communications Unit Leader)						Name: Bruce Hanna	Signature: /s/ Bruce Hanna				
<b>ICS 205</b>						<b>IAP Page</b>		Date/Time: 9/04/2023 12:32			

Incident Radio Communications Plan (ICS 205) Day and night Operations					
Incident Name: <b>SMITH RIVER COMPLEX SOUTH</b>			<b>SOUTHWEST AREA TYPE 1 INCIDENT MANAGEMENT TEAM2</b> DAVE BALES, JEFF ANDREWS		Operational Period: <b>9/5/2023</b>
Ch	Function	Label	Frequency	N/W	Assignment & Remarks
1	Command	NIFC C3	<b>RX:170.4250 TX:168.0750</b> rx & tx tone:131.8	N	<b>CAMP 6</b>
2	Command	NIFC C34	<b>RX:173.9750 TX:164.8625</b> rx & tx tone:131.8	N	<b>MONKEY RIDGE</b>
3	Command	NIFC C35	<b>RX:173.8625 TX:163.8250</b> rx & tx tone:131.8	N	<b>SHIP MTN LOOKOUT</b>
4	Command	NIFC C48	<b>RX:165.4625 TX:162.1750</b> rx & tx tone:131.8	N	<b>HIGH DIVIDE</b>
5	Command	NIFC C55	<b>RX:173.8375 TX:165.5125</b> rx & tx tone:131.8	N	<b>KNOB ABOVE RC DIP</b>
6	TAC	NIFC T1	<b>168.0500</b> rx&tx tone:131.8	N	<b>DIV D, STAGING, NIGHT HOLDING BRANCH V</b>
7	TAC	NIFC T3	<b>168.6000</b> rx&tx tone:131.8	N	<b>DIV A, DIV PP</b>
8	TAC	NIFC T4	<b>166.7250</b> rx&tx tone:131.8	N	<b>DIV MM, CALFIRE CONTINGENCY</b>
9	TAC	NIFC T5	<b>166.7750</b> rx&tx tone:131.8	N	<b>DIV B, DIV SS</b>
10	TAC	NIFC T6	<b>168.2500</b> rx&tx tone:131.8	N	<b>DIV VV, NIGHT HOLDING BRANCH XX</b>
11	TAC	VFIRE 22	<b>154.2650</b> rx&tx tone:156.7	N	<b>DIV YY</b>
12	TAC	VFIRE 24	<b>154.2725</b> rx&tx tone:156.7	N	<b>GASQUET STR GRP</b>
13	A/G	A/G CMD	<b>173.8500</b>	N	OPS, BRANCH AND DIVISION USE
14	A/G	A/G TAC	<b>169.4875</b>	N	<b>A/G TACTICAL</b>
15	TAC	CALCORD	156.0750 rx&tx tone: 156.7	N	<b>EMS AIR COORDINATOR</b>
16	Air Guard	AIRGUARD	<b>168.6250</b> tx tone: <b>110.9</b>	N	<b>Emergency Use only</b>
Prepared by: Martin Johns COML <i>Martin Johns</i> Press and hold # for latest Clone=SSRC825					
<b>Note: All Command Repeaters are Linked</b> <span style="float: right;"><b>COMM UNIT: 669-206-2274</b></span>					

Incident Radio Communications Plan (ICS 205) Day Operations					
Incident Name: SMITH RIVER COMPLEX IA			SOUTHWEST AREA TYPE 1 INCIDENT MANAGEMENT TEAM2 DAVE BALES, JEFF ANDREWS		Operational Period: 9/5/2023
Ch	Function	Label	Frequency	N/W	Assignment & Remarks
1	DISPATCH	SRF 12	RX:172.3750 TX:164.1750 tx tone:127.3	N	GORDON MOUNTAIN
2	DISPATCH	SRF 4	RX:172.3750 TX:164.1750 tx tone:136.5	N	SHIP MOUNTAIN
3	DISPATCH	SRF 12	RX:172.3750 TX:164.1750 tx tone:110.9	N	MONKEY RIDGE
4	DISPATCH	HUU RPT	RX:151.2500 TX:159.4050 rx tone:110.9 tx tone:151.4	N	FORTUNA
5	TAC	NIFC T2	168.2000	N	I/A SURGE
6	TAC	R5 T4	166.5500	N	
7	TAC	R5 T5	167.1125	N	
8	TAC	R5 PROJ	168.6625	N	
9	TAC	VTAC 14	159.4725 rx&tx tone:156.7	N	
10	TAC	CDF T3	151.1750 rx&tx tone:192.8	N	
11	TAC	R5 T6	168.2375	N	
12	TAC	LOCAL	154.4150 tx tone:192.8	N	GASQUET VFD
13	A/G	A/G-43	167.6000	N	Primary A/G
14	A/G	A/G-08	166.8750	N	Secondary A/G
15	TAC	CALCORD	156.0750 rx&tx tone: 156.7	N	EMS AIR COORDINATOR
16	Air Guard	AIRGUARD	168.6250 tx tone: 110.9	N	Emergency Use only

Prepared by: Martin Johns COML *Martin Johns* Press and hold # for latest Clone=IASRC825

**Note:** COMM UNIT: 699-206-2274

Thank You

We're demobing and going home tomorrow. NW13 would like to thank each of you for the professional and competent manner in which you approached your fire assignment.

You were proactive at maintaining good work relationships and creating a harassment-free work environment. Due to your efforts, personnel-related issues on this incident have been minimal.

Thank you for a job well done. Our team looks forward to working with you again on future fire assignments.

“Be kind whenever possible. It is always possible.” – Dalai Lama

Margaret Dietrich, HRSP/TNSP

DEMOB

Fliers complete the “Air Travel Request” QR code below, 72 hours prior to flight date.

- Return supplies to the Cache
- Return radios, antennas, etc., to Communications
- Contact Finance about closing out your paperwork
- If you are a Trainee contact the Training Specialist, stop by or call 360-701-3154

Once the above items have been completed, SCAN the DMOB QR code and complete the questions.



Air Travel North



North DMOB



South DEMOB

Call Demob at 541-414-6539 to confirm the information has been received.

CHECK-IN

Please complete the virtual check-in process via the link below. If you have any questions, please email check-in at 2023.smithrivercomplex.checkin@firenet.gov. Please include NORTH and your request number in the subject line when emailing check-in.

You are not checked in until you provide the following:

- Red Cards
- Roster/Manifest



Process for crew/operator personnel swaps:

Contact Check-In at 208-891-6877 or stop by Lake Selmac ICP and provide the necessary information on personnel changes 48 hours prior to swapping crew members/operators.

## DEMOB LIST

DEMOB DATE	REQ NUMBER	RESOURCE NAME	ITEM CODE
<b>9/5/2023</b>			
9/5/2023	C-50022 1600	CRW2 - TOM FERY FARM	CRW2
9/5/2023	C-50033 0800	TJ FORESTRY CONTRACTING C-4	CRW2
9/5/2023	C-60000 0800	ODF IRA – C156 GRAYBACK FORESTRY INC.	CRW2
9/5/2023	E-279	WTS2 - DARRAH LOGGING	WTS2
9/5/2023	E-455	CANCA 4441	ENG4
9/5/2023	E-50013	JM HEAVY EQUIP. REPAIR, JARED MCCASLAND - DKZ976	STMH
9/5/2023	E-50026	AQUATIC LOGISTICS LLC - 280051	PUP1
9/5/2023	E-50038 1200	BACKWOODS EQUIPMENT , INC. - B45109	DZR2
9/5/2023	E-50043 0900	ENG6 - B & B FIRE SUPPRESSION LLC - B56424	ENG6
9/5/2023	E-50094 0900	ENG3 - GRAYBACK FORESTRY, INC. - J59463	ENG3
9/5/2023	E-50101 1100	PATRICK ENVIRONMENTAL INC, E-14 - D02357	ENG6
9/5/2023	E-50125	DZR2 - TABLE MOUNTAIN FORESTRY LLC - 501075, ID: D3	DZR2
9/5/2023	E-50126 1200	DZR2 - ACE EARTHMOVING, LLC - D01225	DZR2
9/5/2023	E-50136 0800	WTS2 - ROGUE VALLEY H2O LLC - 208782	WTS2
9/5/2023	E-50138 1000	MBM2 - HACKER MACHINES LLC - F00951	MBM2
9/5/2023	E-50139 1300	MBM2 - STEVE GILES	MBM2
9/5/2023	E-50156 1300	SKG1 TOP NOTCH	SKG1
9/5/2023	E-50191 1000	ZEB'S TREE SERVICE, LLC - 22457	CHP2
9/5/2023	E-50193 1100	CHIPPER - ABRAHAM CONTRACTING	CHP2
9/5/2023	O-50042	CHRIEST, JONATHAN ALAN	IMET
9/5/2023	O-50076 1600	FALLING MOD - ARROWS TIMBER & FIRE	FMOD
9/5/2023	O-50082.22	HINES, DAVID MAURICE	GISS
<b>9/6/2023</b>			
9/6/2023	E-50006	WTS2 - FIRE SAIL LP - 045098, ID112	WTS2
9/6/2023	E-50015	MEDICAL - REMS	MESV
9/6/2023	E-50024	SOUTHERN OREGON FORESTY UNLIMITED LLC - C13763	STK1
9/6/2023	E-50025	STK1 - ARNOLD BARBARA - C13445, ID F-20	STK1
9/6/2023	E-50027	PUP1 - GOFF, BRYAN L - B72001	PUP1
9/6/2023	E-50031	AMB1 - AZHLN HUALAPAI NATION FPD 1432 V2A4CEA	AMB1
9/6/2023	E-50040	CHP2 - PROMETHEUS REFORESTATION SUPPORT LLC - 020589	CHP2
9/6/2023	E-50043	ENG6 - B & B FIRE SUPPRESSION LLC - B56424	ENG6
9/6/2023	E-50050	ENG3 - NVTMFX TRUCKEE MEADOWS FPD B0500	ENG3
9/6/2023	E-50171	WTS2 - MIKE'S WATER TRUCK SERVICE, LLC - W65474	WTS2
9/6/2023	O-50029	EMERGENCYRESPONSELOGISTICSLLC, FERL006	EMPF
9/6/2023	O-50055	COATS, COURTNEY	SEC2
9/6/2023	O-50075	FMOD - FALLER MODULE -CUT RITE	FMOD
9/6/2023	O-50082	IMT2 – NW – TEAM 13 – GALES	IMT2
9/6/2023	O-50087	BREWER, SCOTT J	SOPL
9/6/2023	O-50088	DAVIS, GRANT	FOBS
9/6/2023	O-50198	JOHANSEN, CHRISTOPHER HARKINS	BCMG
9/6/2023	O-50199	CONTRERAS, CATHERINA P	RADO
9/6/2023	O-50210	NUTTALL, JOSH D	SOFR



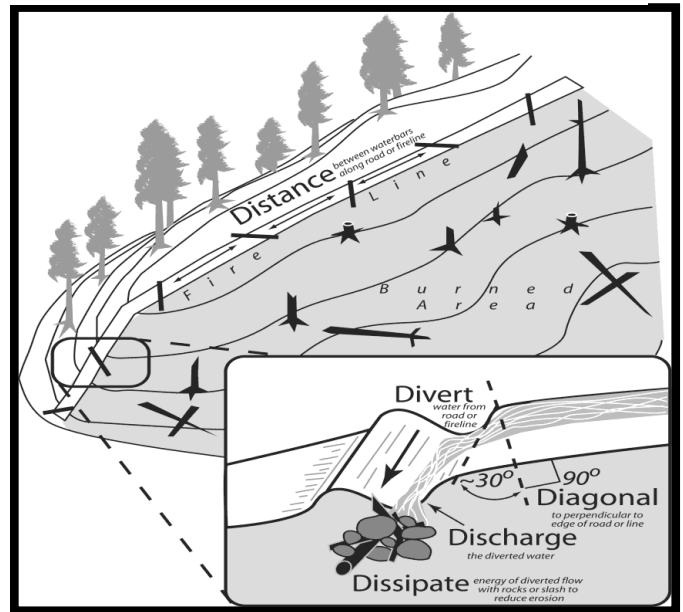
# Mop-Up Standards, Waterbar guidelines, and the Top 5 Natural Resources Take-homes from Smith River Complex Fire

In addition to the upcoming task of constructing waterbars during Suppression Repair, as well as the current Mop-Up standards, here are the top 5 messaging points and/or tidbits of info that we have shared that will prove useful whenever you are fighting fire in the Illinois Valley. Thank you for your most excellent work here and safe travels as you time out and return to your home units!

Constructing EFFECTIVE waterbars on firelines includes attention following the 5-D's; Distance, Divert, Diagonal, Discharge, and Dissipate. The purpose of waterbars is to slow water down as it travels downhill. When constructed correctly, waterbars help reduce excessive erosion and mitigate sediment transfer to streams and rivers.

<b>Fireline Slope</b>	<b>Maximum Spacing</b>
1-6%	300 ft.
7-9%	200 ft.
10-14%	150 ft.
15-20%	90 ft.
21-40%	50 ft.
41-60+%	25 ft.

Figure 1. *The Five-D System for Effective Fireline Waterbars.* Furniss (undated) PNW



## Mop-Up Standards for BLM- and USFS-Managed Lands

The following are the mop up standards for BLM- and USFS-managed lands. The intent of mop up is to make the likelihood of the fire escaping the containment perimeter very unlikely through the rest of the fire season or onset of significant rains. Mop up will be implemented to the degree and location necessary to meet the stated intent.

- The BLM's and USFS's approach to mop up, in order to minimize unnecessary exposure to firefighters, is not to specify a distance or percentage "standard." There may be parts of the fire that are too dangerous for any mop up (e.g., snag patches, extremely steep/rocky terrain).
- To reduce hazards during mop up, fall snags that pose "imminent" danger to firefighters (ref **Field Guide for Danger Tree Identification and Response**, RG-NR-FP-PR-01-08).
- Spot fires outside the control lines will be mopped up commensurate with exposure and values. The perimeter of spots will be mapped in GIS.
- Mop up of partially burned areas further inside the lines will be the exception and determined on a case-by-case basis by the Resource Advisor, Safety Officer, and Operations depending on the specific values at risk.
- As mop up specifications are met on a Division, Operations will work with the Resource Advisors to develop a plan for the resources and equipment to be left in place that may be required for future contingency actions.

## Mop-up Standards for State and Private Lands

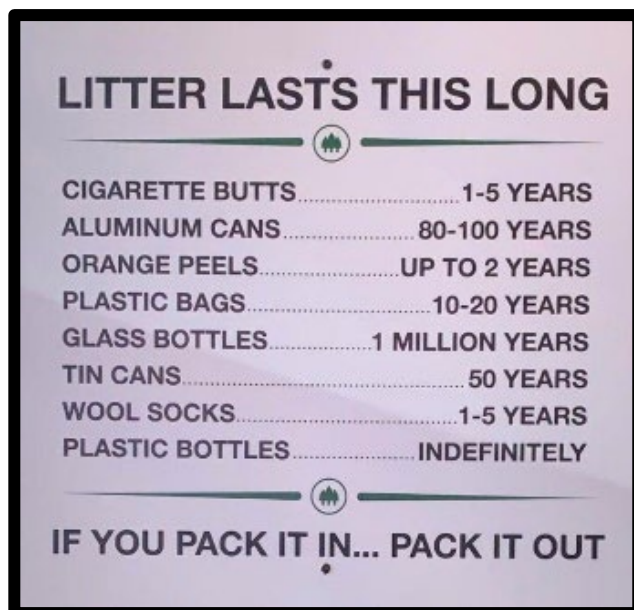
The following are the mop up standards for Smith River Complex North **on State and private lands**. At no time shall firefighter safety be compromised to meet these standards. All hazards associated with these standards will be mitigated based on experience and deference to firefighter expertise prior to implementation.

- Mop up to the degree necessary to make the likelihood of escape very low, with mop up based on experience, terrain, fuel types, and fuel conditions, and current/predicted weather conditions. Engage in dialogue with your supervisor in order to determine the appropriate distance.

- Snag and hazard tree removal: complete felling of all snags and fire damaged trees that have been identified as a safety concern or have the potential to cause spotting outside the control lines.
- Mop up a minimum of 200 ft or 1 tree length along the perimeter with the following exceptions;
  - Some areas may require additional mop up commensurate with the risk of possible escape (i.e. dirty-burn areas). Verify mop up of perimeter with the use of IR equipment in those areas of heavy fuel concentrations.
  - Structures - 300 ft
  - Dirty burn areas – 300 ft
  - Unburned areas within fire perimeter (i.e. islands, drainages, etc) – 300 ft.
- Fire must be secured from rolling material or falling trees/snags crossing the fire lines.
- Avoid creating erosion when using water to mop up.
- Mop up all spot fires outside the main fire perimeter 100%.
- Knock down and scatter all dozer berms during mop up operations.

## Top 5 Natural Resource Take-Homes from the Smith River Complex North

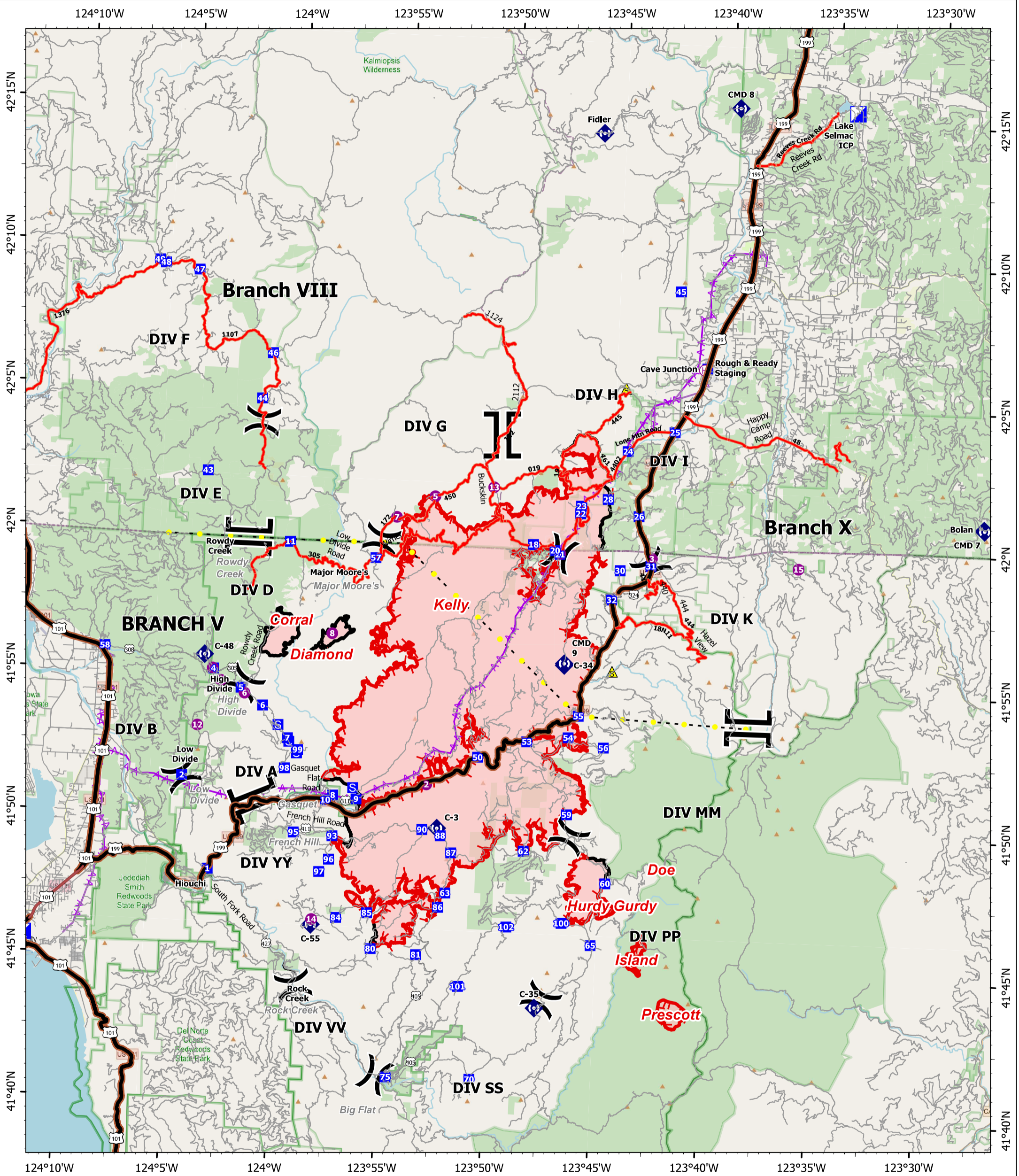
- 1) **WE ARE WITHIN THE RANGE OF PORT-ORFORD CEDAR AND ROOT-ROT, WHICH IS WHY WE BLEACH OUR WATER WITH A 1% SOLUTION (BLEACH KILLS THE ROOT-ROT SPORES).**
- 2) Control efforts and economic losses stemming from noxious weeds are extremely costly – upwards of \$125 million, in Oregon alone. In the Illinois Valley, we have a noxious weed, Alyssum (*Alyssum corsicum* and *Alyssum murale*), that is the only infestation known in North America. Noxious weed seeds can remain viable for 1 – 80 years, depending on species; Alyssum seeds can remain viable for 10-20 years. The best thing we can do is to prevent the spread; use the weed wash whenever possible, check your clothing for seeds, and ensure no plant parts/seeds make the journey home with you.
- 3) *Avoid drafting from smaller streams – if you need to dam up a source, ensure at least 50% of the outflow remains, and pull the fine gravel (which salmonids use for spawning) to the side so that it can be easily re-integrated into the pool. And make sure your absorbent pads are changed when they become 50% saturated.*
- 4) **Serpentine soils account for a high number of native endemic plants in this area, including the California pitcher plant (*Darlingtonia californica*), a carnivorous species that is found in fens, or areas with constant flow of shallow water.**
- 5) You'd be surprised how long trash persists; a Ziplock bag takes ~ 1,000 years to decompose! Thanks for keeping our yard clean!!



**Final fun fact; one-half inch of rain over the 83K acres that the Smith River Complex fire encompasses equates to roughly 1,150,769,228 gallons of water over the area PER event.**

# TRANSPORTATION

9/5/2023

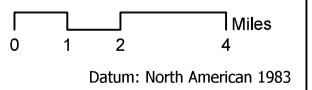
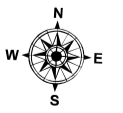


## SMITH RIVER COMPLEX NORTH

9/5/2023

85,429 acres  
IR updated 9/04/2023 0137 PDT

- |                       |                     |               |                               |
|-----------------------|---------------------|---------------|-------------------------------|
| Helispot              | Drop Point          | Aerial Hazard | Tunnel                        |
| Helibase              | Staging Area        | Contained     | Minor roads                   |
| Division Break        | Repeater            | Uncontained   | Major ops roads               |
| Branch Break          | Safety Zone         | County Road   | USGS Roads                    |
| Incident Command Post | Highlighted Feature | Major Roads   | Wildfire Daily Fire Perimeter |
|                       |                     | Expressway    |                               |
|                       |                     | Secondary Hwy |                               |



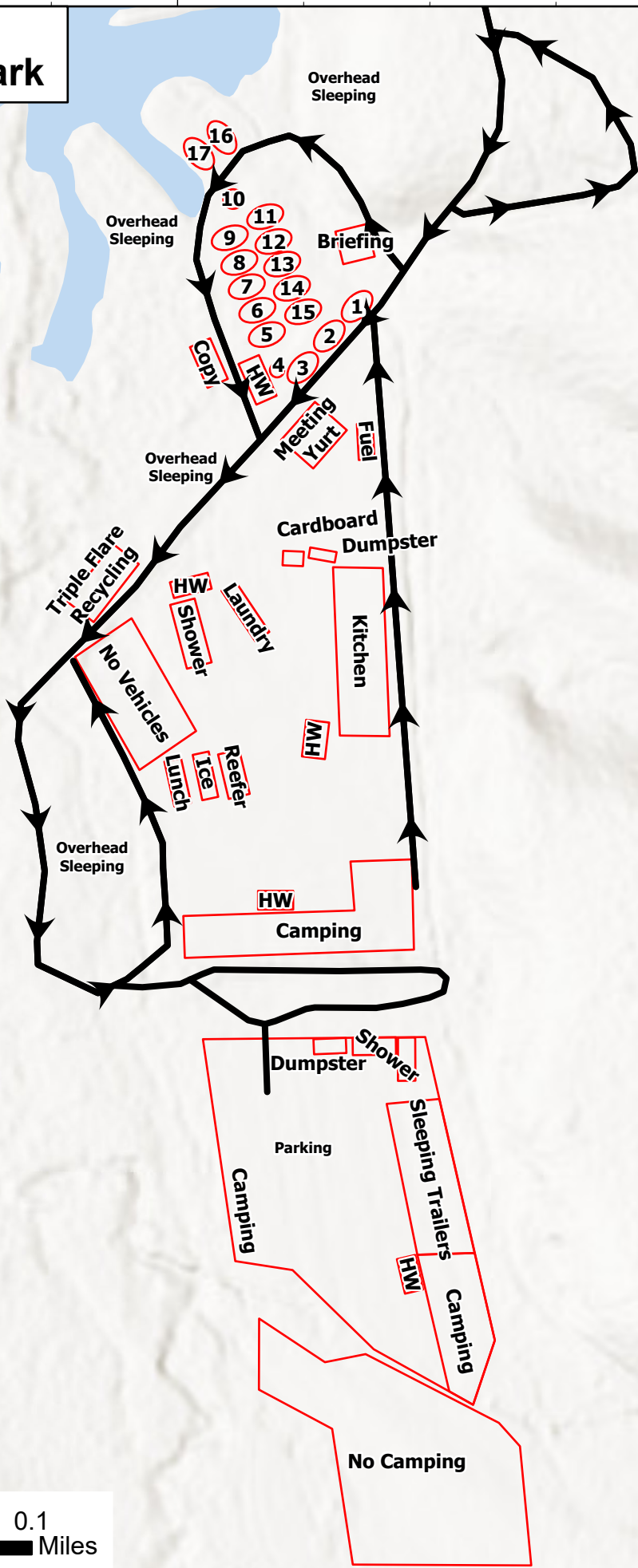
Datum: North American 1983

Author Name Updated: 9/4/2023 1804

# Camp Facilities Map Lake Selmac County Park

Comm. Techs	1
Communications	2
Medical	3
Ordering	4
Check-in/Demob	5
Plans	6
GIS/Situation	7
Logistics	8
IC/Liason	9
HR/Training	10
Operations	11
Resources/Air Ops	12
Safety/FBAN/IMET	13
PIO	14
Finance	15
Agency Administrators	16
Yurt	17

Ground support, weed wash, and supply moved to 30365 Redwood Hwy Cave Junction, OR 97523









# MEDICAL PLAN (206 WF)

1. Incident/Project Name				2. Operational Period			
<b>Smith River Complex North</b>				Date/Time: <b>9/5 0700 – 9/6 0700</b>			
<b>3. Ambulance Services</b>							
Name	Complete Address	Phone	Advanced Life Support (ALS)				
			Yes	No			
AMR	Cave Junction, OR	911	X				
<b>4. Air Ambulance Services</b>							
Name	Phone	Type of Aircraft & Capability					
Meracy Flight	1-800-903-9000 (Press 0)	Critical Care Team of Paramedic and RN 24 hr, 100'x100' LZ.					
REACH	1-800-338-4045	Critical Care Team of Paramedic and RN 24 hr, 100'x100' LZ.					
Teton Short Haul	Smith North Comms/Rogue CC	ALS, Short Haul, Daytime-Sunriver, OR					
National Guard Hoist	Smith North Comms /NWCC	24 hr, Roseburg, OR					
<b>5. Hospitals</b>							
Name	Degrees Decimal Minutes	Travel Time From ICP		Phone	Helipad		Level of Care
	Lat:     42° 25.27' N	20	90		X		
Asante 3 Rivers Medical Center (Grants Pass, OR)	Long:   123° 20.56' W	Min	Min.	541-472-7081			Level III Trauma
	Lat:     42° 19.05' N	40	120		X		
Asante Rogue Regional Medical Center (Medford, OR)	Long:   122° 50.00' W	Min	Min.	541-789-7367			Level II Trauma
	Lat:     45° 32.668' N	1.5	5		X		
Legacy Emanuel Hospital (Portland, OR)	Long:   122° 40.293' W	Hrs.	Hrs.	503-413-4121			Level I Trauma Burn Center
	Lat:     41° 46.27454' N	X	2			X	
Sutter Coast Hospital (Crescent City, CA)	Long:   124° 11.537' W		Hrs.	707-464-8888			Level IV Trauma
	Lat:     40° 34.14' N	1	4		X		
Mercy Medical Center (Redding, CA)	Long:   122° 23.97' W	Hr.	Hrs.	530-225-6000			Level II Trauma
	Lat:     38° 33.20' N	2	6		X		
UC Davis Medical Center (Sacramento, A)	Long:   121° 27.28' W	Hrs.	Hrs.	916-734-3636			Level I Trauma Burn Center
<b>ICP</b>	<b>EMS Responders &amp; Capability:</b>		James Brown MEDL, EMPF 360-775-5413 Ben Meacham MEDL, EMTF 360-921-3817 Mark Notaras MEDL, EMTF 509-386-7860				
	Equipment Available on Scene:		ALS Kit, LP15 defib, O2, OTC meds				
	Medical Emergency Channel:		Smith River North Communications Plan				
	ETA for Ambulance to Scene:						
	Air:		30 – 60 min				
	Ground:		30 – 60 min				
	Approved Heli-Spot:						
<b>DIV E</b>	<b>EMS Responders &amp; Capability:</b>		Medic 1 Joel Bower 360-461-7390 ALS Kit/AED EMT 9 Dillon Wadhams 619-647-8492 BLS Kit/AED				
	Equipment Available on Scene:		ALS Kit, defib, O2, OTC meds				
	Medical Emergency Channel:		Smith River North Communications Plan				
	ETA for Ambulance to Scene:						
	Air:		70 min				
	Ground:		60 min				
	Approved Heli-Spot:						
<b>DIV F</b>	<b>EMS Responders &amp; Capability:</b>		Medic 7 Cody "Happy" Gillmore 918-703-9103 ALS Kit/AED EMT 7 Lauren Burton 509-378-5253 BLS Kit/AED AMBO 5 Shanna Cramer 228-214-8199 ALS Ambulance				
	Equipment Available on Scene:		ALS Kit, defib, O2, OTC meds				
	Medical Emergency Channel:		Smith River North Communications Plan				
	ETA for Ambulance to Scene:						
	Air:		60 min				
	Ground:		60 min				
	Approved Heli-Spot:						
<b>DIV H</b>	<b>EMS Responders &amp; Capability:</b>		Medic 22 Chris Hardesty 760-984-9915 ALS Kit/AED/UTV REMS 1 Dan Blaul 949-577-2663 ALS Kit/UTV Rope Rescue AMBO 3 Darren Hearn 302-245-5375 ALS 4X4 Ambulance				
	Equipment Available on Scene:		ALS Kit, defib, O2, OTC meds				
	Medical Emergency Channel:		Smith River North Communications Plan				
	ETA for Ambulance to Scene:						
	Air:		30-60 min				
	Ground:		60 min				
	Approved Heli-Spot:						



# MEDICAL PLAN (206 WF)

<b>DIV I</b>	<b>EMS Responders &amp; Capability:</b>	<b>Medic 4 Chad Payletz</b> 954-326-9006 ALS Kit/AED <b>Medic 6 Alex Vera</b> 773-698-3224 ALS Kit/AED <b>EMT 1 Lisa Johnson</b> 909-632-5999 BLS Kit/AED <b>EMT 4 Jonathon Cahill</b> 319-431-1663 BLS Kit/AED <b>Medic 23 Michael Weig</b> 605-545-5866 ALS Kit/AED/UTV <b>AMBO 2 Lanee Forkner</b> 480-625-5353 ALS 4X4 Ambulance
	Equipment Available on Scene:	ALS Kit, defib, O2, OTC meds
	Medical Emergency Channel:	Smith River North Communications Plan
	ETA for Ambulance to Scene:	
	Air:	30-60 min
	Ground:	60 min
	Approved Heli-Spot:	
	Lat:	
Long:		
<b>DIV K</b>	<b>EMS Responders &amp; Capability:</b>	<b>Medic 3 Stephan Smith</b> 636-748-0373 ALS Kit/AED <b>EMT 2 James Henson</b> 208-316-4658 BLS Kit/AED <b>EMT 8 Ryan Nohrenberg</b> 360-487-9769 BLS Kit/AED <b>Medic 24 Cody Baker</b> 205-389-7064 ALS kit/AED/UTV <b>REMS 2 Brian Weidman</b> 541-301-0579 ALS/UTV Rope Rescue <b>AMBO 4 Charlie Campbell</b> 360-798-3685 ALS Ambulance
	Equipment Available on Scene:	ALS Kit, defib, O2, OTC meds
	Medical Emergency Channel:	Smith River North Communications Plan
	ETA for Ambulance to Scene:	
	Air:	30-60 min
	Ground:	60 min
	Approved Heli-Spot:	
	Lat:	
Long:		
<b>CAVE HELIBASE</b>	<b>EMS Responders &amp; Capability:</b>	<b>Medic 5 Ryan Shank</b> 717-490-4990 ALS Kit/AED
	Equipment Available on Scene:	ALS Kit, defib, O2, OTC meds
	Medical Emergency Channel:	Smith River North Communications Plan
	ETA for Ambulance to Scene:	
	Air:	
	Ground:	10 min
Approved Heli-Spot:		
<b>NIGHT  DIV H / I</b>	<b>EMS Responders &amp; Capability:</b>	<b>AMBO 6 Jason Eyerly</b> 646-574-0705 ALS 4X4 Ambulance
	Equipment Available on Scene:	ALS Kit, defib, O2, OTC meds
	Medical Emergency Channel:	Smith River North Communications Plan
	ETA for Ambulance to Scene:	
	Air:	60 min
	Ground:	60 min
	Approved Heli-Spot:	

Prepared By (Medical Unit Leader)	Date	Reviewed By (Safety Officer)	Date
Ben Meacham MEDL	9/4/2023	Ray Hershey SOF2	9/4/2023
Signature: Ben Meacham		Signature: Ray Hershey	

# MEDICAL PLAN (ICS 206 WF)

Controlled Unclassified Information//Basic

## Medical Incident Report

**FOR A NON-EMERGENCY INCIDENT, WORK THROUGH CHAIN OF COMMAND TO REPORT AND TRANSPORT INJURED PERSONNEL AS NECESSARY.**

**FOR A MEDICAL EMERGENCY: IDENTIFY ON-SCENE INCIDENT COMMANDER BY NAME AND POSITION AND ANNOUNCE "MEDICAL EMERGENCY" TO INITIATE RESPONSE FROM IMT COMMUNICATIONS/DISPATCH.**

**Use the following items to communicate situation to communications/dispatch.**

**1. CONTACT COMMUNICATIONS / DISPATCH** (Verify correct frequency prior to starting report)

*Ex: "Communications, Div. Alpha. Stand-by for Emergency Traffic."*

**2. INCIDENT STATUS:** Provide incident summary (including number of patients) and command structure.

*Ex: "Communications, I have a Red priority patient, unconscious, struck by a falling tree. Requesting air ambulance to Forest Road 1 at (Lat./Long.) This will be the Trout Meadow Medical, IC is TFLD Jones. EMT Smith is providing medical care."*

Severity of Emergency / Transport Priority	<input type="checkbox"/> <b>RED / PRIORITY 1 Life or limb threatening injury or illness. Evacuation need is IMMEDIATE</b> <i>Ex: Unconscious, difficulty breathing, bleeding severely, 2° – 3° burns more than 4 palm sizes, heat stroke, disoriented.</i> <input type="checkbox"/> <b>YELLOW / PRIORITY 2 Serious Injury or illness. Evacuation may be DELAYED if necessary.</b> <i>Ex: Significant trauma, unable to walk, 2° – 3° burns not more than 1-3 palm sizes.</i> <input type="checkbox"/> <b>GREEN / PRIORITY 3 Minor Injury or illness. Non-Emergency transport</b> <i>Ex: Sprains, strains, minor heat-related illness.</i>	
Nature of Injury or Illness & Mechanism of Injury		<i>Brief Summary of Injury or Illness (Ex: Unconscious, Struck by Falling Tree)</i>
Evacuation Request		<i>Air Ambulance / Short Haul/Hoist Ground Ambulance / Other</i>
Patient Location		<i>Descriptive Location &amp; Lat. / Long. (WGS84)</i>
Incident Name		<i>Geographic Name + Medical (Ex: Trout Meadow Medical)</i>
On-Scene Incident Commander		<i>Name of on-scene IC of Incident within an Incident (Ex: TFLD Jones)</i>
Patient Care		<i>Name of Care Provider (Ex: EMT Smith)</i>

**3. INITIAL PATIENT ASSESSMENT:** Complete this section for each patient as applicable (start with the most severe patient)

Patient Assessment: See IRPG PAGE 106

Treatment:

**4. EVACUATION PLAN:**

Evacuation Location (if different): (Descriptive Location (drop point, intersection, etc.) or Lat. / Long.) Patient's ETA to Evacuation Location:

Helispot / Extraction Site Size and Hazards:

**5. ADDITIONAL RESOURCES / EQUIPMENT NEEDS:**

*Example: Paramedic/EMT, crews, immobilization devices, AED, oxygen, trauma bag, IV/fluid(s), splints, rope rescue, wheeled litter, HAZMAT, extrication*

**6. COMMUNICATIONS: Identify State Air/Ground EMS Frequencies and Hospital Contacts as applicable**

Function	Channel Name/Number	Receive (RX)	Tone/NAC *	Transmit (TX)	Tone/NAC *
COMMAND					
AIR-TO-GRND					
TACTICAL					

**7. CONTINGENCY: Considerations:** If primary options fail, what actions can be implemented in conjunction with primary evacuation method? Be thinking ahead..

**8. ADDITIONAL INFORMATION:** Updates/Changes, etc.

**REMEMBER:** Confirm ETAs of resources ordered. Act according to your level of training. Be Alert. Keep Calm. Think Clearly. Act Decisively.