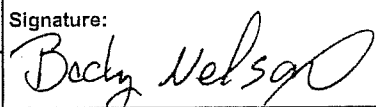




## ORGANIZATION ASSIGNMENT LIST (ICS 203)

<b>1. Incident Name:</b>		<b>2. Operational Period:</b> DAY SHIFT	
SMITH RIVER COMPLEX NORTH		Date/Time From: 09/24/2023 0700	Date/Time To: 09/24/2023 2100
		SUN	SUN
<b>3. Incident Commander(s) and Command Staff:</b>		<b>6. Logistics Section:</b>	
INCIDENT COMMANDER	KEVIN STOCK	CHIEF	VICKI RAMMING
DEPUTY	BRIAN EBERT	SUPPLY UNIT	KAREN BRAND GLENN HUFFMAN (T)
SAFETY OFFICER	JEFF BISHOP JERRY VAN DYNE	FACILITIES UNIT	ROBERT RAWLINGS NICK MILLER
INFORMATION OFFICER	PAM SICHTING JIM CAHILL	GROUND SUPPORT UNIT	EVAN JOHNSON
READ LIASON	ERICA LAMB	GROUND SUPPORT UNIT (HARBOR CAMP)	WLADIMIR SENUTOVITCH
LIAISON OFFICER	SLATER TURNER; TIM KEITH ERIK LARSON (T);	COMMUNICATIONS UNIT	MIKE NORMAN
HUMAN RESOURCES	STEW SOUDERS	MEDICAL UNIT (SELMAC ICP)	CHLOE READ (T)
		MEDICAL UNIT (HARBOR CAMP)	LISA PONCELET
<b>4. Agency/Organization Representative(s):</b>		FOOD UNIT	JOY THOMPSON SAMUEL KATANICH
<b>Agency/Organization</b>	<b>Name</b>	<b>7. Operations Section:</b>	
USFS RSF AA	JENNIFER SANBORN	PLANNING OPS	MEL DURRANT
USFS RSF AREP	SCOTT BLOWER	FIELD OPS	ROD BONACKER
USFS RSF FIRE MGMT LIASON	MIKE MCCANN	STRATEGIC OPS	DAVE ROBERTSON
USFS SRF AA	ELLEN BOGARDUS-SZYMANIAK	Branch	<b>VIII</b>
BLM AA	HEIDI LOWERY	BRANCH DIRECTOR	GORDON FOSTER
OREGON DOF	BRANDON FERGUSON	DIVISION/GROUP	DIV E DREW DINGMANN JAMISON BIRD (T)
LEAD READ	JOSEF PORTER ADAM BUCHER (T)	DIVISION/GROUP	DIV F RENEE JACK JYOTA SMITH-HOWARD (T)
		Branch	<b>X</b>
		BRANCH DIRECTOR	
<b>5. Planning Section:</b>		DIVISION/GROUP	DIV G / H MACKER BABB
CHIEF	MIKE WILLIAMS JIM STONE; ALEX ENNA (T)	DIVISION/GROUP	DIV I/K ROD BJORVIK JERE CLASSAY
RESOURCES UNIT	BECKY NELSON SANDY DODGE	DIVISION/GROUP	SUPPRESSION REPAIR JON AIRHART
SITUATION UNIT	DALE PUTMAN	<b>7b. Air Operations Branch:</b>	
DOCUMENTATION UNIT	CHRIS ROHRBACH (V)	AIR OPS BRANCH DIRECTOR	NORM SEALING
DEMOB UNIT	FRANK DAVIS	AIR SUPPORT GROUP SUPERVISOR	THOMAS RAWLINGS (T)
FIRE BEHAVIOR ANALYST	SCOTT MACDONALD	<b>8. Finance/Administration Section:</b>	
GIS SPECIALIST	RACHEL ARMSTRONG ALLYSON BUCCANERO; BRIGIT ANDERSON (T)	CHIEF	JUDY MORGAN JANET MCDONALD (T)
TECH SUPPORT SPECIALIST	PAUL DZIALOWY; LIZ SHEPARD (T) TERRI MILLER (T)	TIME UNIT	ROBYN FITZGERALD
INCIDENT METEOROLOGIST	MATTHEW MEHLE	PROCUREMENT UNIT	PAULA WINNINGHAM
		COMPENSATION UNIT	MICHAEL KELLY
		COST UNIT	RANDY TOTTEN MURA RIDDLE (T)
<b>9. Prepared By:</b>	<b>Name:</b> BECKY NELSON	<b>Position/Title:</b> RESL	<b>Signature:</b>
ICS 203	IAP Page	Date/Time: 09/23/2023 2000	

FINAL

Page 1 of 1



# Fire Weather Forecast



FORECAST NO: 32  
 PREDICTION FOR: Sunday-Monday  
 DATE: September 24, 2023  
 FORECAST ISSUED: 1900 September 23, 2023

FIRE: Smith River Complex North  
 UNIT: CA-SRF-968  
 IMET: Matt Mehle  
 SIGNED: *Matt Mehle*

WEATHER DISCUSSION: Valley elevations = 1400 ft (Illinois Valley), Ridgetop elevations = 4000 ft (H13)

**\*\*\*Flood Watch in effect Sunday evening through Monday evening\*\*\*  
 \*\*\*Wind Advisory in effect Sunday afternoon through Monday evening\*\*\***

The leading edge of a potent storm will bring cool, wet, and windy conditions to the Smith River Complex Sunday. Southerly winds will increase throughout the day with the highest gusts over the higher terrain of Branch X. A cold front will sweep through the region late Sunday night and early Monday. This frontal passage will bring moderate to heavy rain, gusty winds, and isolated thunderstorms. The heavy rain will bring increased likelihood of flooding, ponding of water, and local debris flows. The strong winds may bring down fire weakened trees as well.

### SUNDAY:

**WEATHER:** Scattered showers throughout the day.  
**MAX TEMP:** Valleys: 66-65°F (Little Change)      **MIN RH:** Valleys: 50-60% (5-10↑)  
                   Ridgetops: 55-60°F (Little Change)      Ridgetops: 60-70% (10 ↑)  
**CHC WTG RAIN:** 45-55%      **LAL:** 1      **SFC VIS:** 3-6 miles.

**WINDS:** Valleys: Southwest 8-13 G 35 mph in the afternoon .  
 (20 feet) Ridgetops: Southwest 10-15 G 40 mph in the afternoon.

**MIXING HEIGHT:** Rising to 2,500 ft by 1500.      **TRANSPORT WIND:** Southwest 15 to 30 mph.

### SUNDAY NIGHT:

**WEATHER:** Cloudy with rain showers.  
**MIN TEMP:** Valleys: 46-49° (little change)      **MAX RH:** Valleys: 70-80% (Little Change)  
                   Ridgetops: 46-49° (little change)      Ridgetops: 75-85% (Little Change)  
**CHC WTG RAIN:** 70%      **LAL:** 1      **SFC VIS:** 3-6 miles.

**WINDS:** Valleys: Southwest 10-15 G 35-40 mph.  
 (20 feet) Ridgetops: Southwest 10-20 G 40-45 mph.

**MIXING HEIGHT:** Dropping under 1000 ft by 2200.

### MONDAY:

**WEATHER:** Cloudy with periods of rain in the morning then scattered showers/t-storms in the afternoon.  
**MAX TEMP:** Valleys: 66-65°F (Little Change)      **MIN RH:** Valleys: 55-65% (10↑)  
                   Ridgetops: 55-60°F (Little Change)      Ridgetops: 60-70% (10 ↑)  
**CHC WTG RAIN:** 95%      **LAL:** 2      **SFC VIS:** 3 miles.

**WINDS:** Valleys: Southwest 10-15 G 35-40 mph.  
 (20 feet) Ridgetops: Southwest 10-20 G 40-45 mph.

**MIXING HEIGHT:** Rising to 2,500 ft by 1500.      **TRANSPORT WIND:** Southwest-south 20 to 30 mph.

EXTENDED OUTLOOK: Winds will weaken by Tuesday, but scattered showers and cool temperatures remain.



Nearby Weather Observations

Please send weather observations to Matt Mehle [mtrimet22@gmail.com](mailto:mtrimet22@gmail.com)

### Fire Behavior Forecast #35

<b>Incident:</b> Smith River Cx North CA-SRF-000968	<b>TYPE OF FIRE:</b> Wildfire
<b>DATE/TIME ISSUED:</b> September 23, 2023 1900	<b>OPERATIONAL PERIOD:</b> Sept. 24, 2023 0700-1800
<b>FBAN:</b> Scott MacDonald (541)-993-3444	<b>Signed:</b> <i>Wm. Scott MacDonald</i>

**Weather Summary** - See Incident Weather Forecast:

#### Fuels

**Shrub:** Shrubs and brush 1 to 3 feet high with a very low load of grass intermixed with sparse conifer. Manzanita brush and other live fuels are moderately available for consumption with independent fire. These fuels will be more reactive to higher wind speeds and show greater rates-of-spread in exposed areas (ridges)

**Timber litter and shrub:** Primary carrier of the fire is understory brush with timber and leaf litter. Expect moderate spread rates in sheltered areas. Canopy closure shelters fuels from wind, making fire spread to be slow with low to moderate winds.

**Grass/light fuels:** Primary carrier of the fire is open grass areas with light shrub and mixed timber at lower elevations (valley bottoms in IA response area). Grasses are fully cured with seasonal drying, and will be reactive to higher winds

<b>Fire Behavior:</b> Low to Minimal (very low) <b>Max. spot distance:</b> < .1 mile <b>Wild Rivers ERC%:</b> 77 <sup>th</sup> percentile <b>BI%:</b> 78 <sup>th</sup> percentile <b>POI =</b> 20 to 30 percent	<b>Fuel/Type Model</b>	<b>Maximum Rate of Spread</b>	<b>Maximum Flame Length</b>
	Shrub	1 - 3 Ch./hr.	1 - 2 ft.
	Timber litter shrub	2 - 6 Ch./Hr.	1 - 3 ft.
	Grass (lower elevations)	6 - 22 Ch./hr.	1 - 4 ft.

**Expected Fire Behavior is Based on the Warmest, Driest, Windiest Conditions Forecasted assuming wind/slope/fuels are aligned**

**General/Potential:** Skies will have increased cloud-cover as day progresses, increasing overall shading on fire area; Lower temps and increasing RH will continue to lower fire behavior potential; Southerly winds on ridges/exposed areas expected as front approaches, continuing to keep **potential** fire behavior low to moderate outside burn perimeter with wind/slope alignment (see table above), until fuel moistures increase. POI lower with increased shading, lower temps, and higher RH. As precipitation occurs, fire behavior will move towards minimal fire behavior (very low)

**Div. E/F:** If initial attack fire occurs expect moderate fire behavior affected by wind, slope and heavy timber with short range (< .1 miles) spotting from timber stands, until cloud cover and precipitation increases dead fuel moisture content. Fire behavior moving from **moderate to minimal** (very low) as fuel moistures increase.

**Div. G/H (includes Utility Group area):** Fire activity will continue to be low to moderate in green islands of fuel until precipitation occurs; SW winds by morning, slightly higher than yesterday with gusts approaching 35 in some areas. Smoldering, creeping, and heavy fuels continue consuming. Limited backing/flanking behavior in green islands. Single tree or small group torching not likely. As day progresses, fire behavior will move from **low-moderate to minimal** (very low), as fuel moistures increase.

**India/Kilo:** Some smoldering and creeping likely to occur in unburned islands of fuel until higher fuel moistures occur with precipitation; fire behavior moving from **low to minimal** (very low).

**IA Response:** Potential for moderate ROS in light flashy fuels in valley bottoms due to wind. Fine fuels, such as cured grass, tend to react to wind speed quickly, even as RH increases are occurring until moisture of extinction is reached (above 16% find dead fuel moisture).

#### Air Operations:

Increasing clouds may limit air operations due to visibility distances and gusty winds – see weather forecast

#### Safety:

Use of **LCES** is not just for fire situations; applies readily to any hazardous event. Make sure you have **lookouts, communication, escape routes, and safety zones** for all operations.

**Division/Group Assignment List (ICS 204 WF)**  
Controlled Unclassified Information//Basic

1. Incident Name:				3.		
SMITH RIVER COMPLEX NORTH				VIII	E	
2. Operational Period: DAY SHIFT						
Date/Time From: 09/24/2023 0700 SUN		Date/Time To: 09/24/2023 2100 SUN				
4. Operations Personnel						
PLANNING OPERATIONS			MELVIN DURRANT		FIELD OPERATIONS	
BRANCH DIRECTOR			GORDON FOSTER		DIVISION SUPERVISOR	
					ROD BONACKER	
					DREW DINGMAN (9/27) JAMISON BIRD (T) (9/24)	
5. Resources Assigned this Period						
Strike Team / Task Force / Resource Designator		LWD	Leader	Number Persons	Drop Off PT./Time	Pick Up PT./Time
O-50502.44 TFLD		10/02	ZEB WATTS	1	HARBOR CAMP/	HARBOR CAMP/
O-50513 TFLD (T)		10/01	ROBERT SNYDER	1	HARBOR CAMP/	HARBOR CAMP/
O-50525 HEQB		10/05	KEATON SHEPHERD	1	HARBOR CAMP/	HARBOR CAMP/
O-50404 HEQB (T)		09/24	COLTON WITT	1	HARBOR CAMP/	HARBOR CAMP/
E-50253 MBM2 SOUTHWEST EQUIPMENT		10/01	JAKE STUMP	3	HARBOR CAMP/	HARBOR CAMP/
E-50139 MBM2 STEVE GILES		09/26	DON GILBERT	2	HARBOR CAMP/	HARBOR CAMP/
E-50309 EXC2 ACE EARTHMOVING		09/27	WADE COMYFORD	2	HARBOR CAMP/	HARBOR CAMP/
E-50321 LOGP AXSUS ENTERPRISES		10/04	COLTON HAYNES	2	HARBOR CAMP/	HARBOR CAMP/
E-50320 LOGL AXSUS ENTERPRISES		10/02	JAY BYERS	2	HARBOR CAMP/	HARBOR CAMP/
O-50362 HEQB		09/24	JAMES LINDSAY	1	HARBOR CAMP/	HARBOR CAMP/
O-50541 HEQB		10/06	RILEY IRWIN	1	HARBOR CAMP/	HARBOR CAMP/
E-50216 SKD1 PARTRIDGE		10/01	RYAN MCCORD	2	HARBOR CAMP/	HARBOR CAMP/
E-50325 SKD1 INLAND TIMBER		09/29	TOM O'DONNELL	2	HARBOR CAMP/	HARBOR CAMP/
E-50069 FEL1 NASH CONTRACTING		10/04	TRAVIS TARUSCIO	2	HARBOR CAMP/	HARBOR CAMP/
E-50189 FEL1 MCKELLAR		09/29	BRET STRONG	2	HARBOR CAMP/	HARBOR CAMP/
E-50343 LOGP AXSUS		10/06	WADE RAINVOLT	1	HARBOR CAMP/	HARBOR CAMP/
E-50251 WTS2 TABLE MOUNTAIN FORESTRY		10/01	JERRY WISNIEWSKI	1	HARBOR CAMP/	HARBOR CAMP/
O-50406 REAF (T)		10/01	CHARLES GRELL	1	HARBOR CAMP/	HARBOR CAMP/
8. Division/Group Communication Summary						
Function	Channel	RX Frequency N/W	RX Tone/NAC	TX Frequency N/W	TX Tone/NAC	Mode
TACTICAL	TAC 12	168.2500	192.8	168.2500	192.8	A
COMMAND	CMD 6	173.0625	162.2	162.1625	162.2	A
AIR TO GROUND	A/G TAC	169.4875	000.0	169.4875	000.0	A
AIR TO GROUND	VMED 29	155.3475	156.7	155.3475	156.7	A
9. Prepared By (Resource Unit Leader)			Approved By (Planning Section Chief)		Date	Time
BECKY NELSON; SANDY DODGE			JIM STONE, ALEX ENNA (T)		09/23/2023	1700

## Division/Group Assignment List (ICS 204 WF)

Controlled Unclassified Information//Basic

1. Incident Name:			3.			
SMITH RIVER COMPLEX NORTH			Branch:		Division/Group	
2. Operational Period: DAY SHIFT			VIII		E	
Date/Time From: 09/24/2023 0700	SUN	Date/Time To: 09/24/2023 2100				SUN
4. Operations Personnel						
PLANNING OPERATIONS		MELVIN DURRANT		FIELD OPERATIONS		
BRANCH DIRECTOR		GORDON FOSTER		DIVISION SUPERVISOR		
				DREW DINGMAN (9/27) JAMISON BIRD (T) (9/24)		
5. Resources Assigned this Period						
Strike Team / Task Force / Resource Designator	LWD	Leader	Number Persons	Drop Off PT./Time	Pick Up PT./Time	
O-50397 SOF2	09/25	THOMAS GREILING	1	HARBOR CAMP/	HARBOR CAMP/	
O-50502.9 SOF2	10/01	RENEE LAMOREAUX	1	HARBOR CAMP/	HARBOR CAMP/	
O-50495 SOFR (T)	09/25	JOSH LEUTZINGER	1	HARBOR CAMP/	HARBOR CAMP/	
E-50301 UTV (GREILING)				HARBOR CAMP/	HARBOR CAMP/	
E-50099 MEDIC 24	09/28	MICHAEL WEIG	2	HARBOR CAMP/	HARBOR CAMP/	
		TOTAL	33			
6. Control Operations/Work Assignments:						
<p>Task: Construct secondary containment line.                  Purpose: To minimize the impact of fire to the communities of Smith-River and Brookings.                  End State: Impacts to the communities of Smith River and Brookings have been minimized.</p>						
7. Special Instructions:						
<p>SOF2 Lamoreaux, SOF2 Greiling and SOFR (T) Leutzinger covering both DIV E &amp; F.</p> <p>REAF (T) Charlie Grell will be in both DIV E &amp; F.                  REAF Adam Butcher is roaming as needed. Will contact DIVS upon entering respective divisions.</p> <p>Please use bleach treatment in all water applied to the fire. Bleach is in supply and at the lunch pickup area. 1 gallon of bleach to 1,000 gallons of water.</p>						
8. Division/Group Communication Summary						
Function	Channel	RX Frequency N/W	RX Tone/NAC	TX Frequency N/W	TX Tone/NAC	Mode
TACTICAL	TAC 12	168.2500	192.8	168.2500	192.8	A
COMMAND	CMD 6	173.0625	162.2	162.1625	162.2	A
AIR TO GROUND	A/G TAC	169.4875	000.0	169.4875	000.0	A
AIR TO GROUND	VMED 29	155.3475	156.7	155.3475	156.7	A
9. Prepared By (Resource Unit Leader)			Approved By (Planning Section Chief)		Date	Time
BECKY NELSON; SANDY DODGE			JIM STONE, ALEX ENNA (T)		09/23/2023	1700



**Division/Group Assignment List (ICS 204 WF)**  
Controlled Unclassified Information//Basic

1. Incident Name:				3.		
SMITH RIVER COMPLEX NORTH				Branch:  VIII	Division/Group  F	
2. Operational Period: DAY SHIFT						
Date/Time From: 09/24/2023 0700 SUN		Date/Time To: 09/24/2023 2100 SUN				
4. Operations Personnel						
PLANNING OPERATIONS			MEL DURRANT	FIELD OPERATIONS		ROD BONACKER
BRANCH DIRECTOR			GORDON FOSTER	DIVISION/GROUP SUPERVISOR		RENEE JACK JYOTA SMITH-HOWARD (T)
5. Resources Assigned this Period						
Strike Team / Task Force / Resource Designator	LWD	Leader	Number Persons	Drop Off PT./Time	Pick Up PT./Time	
O-50356 TFLD	09/29	RENETTE SABA	1	HARBOR CAMP/	HARBOR CAMP/	
O-50364 HEQB (T)	09/25	MATTHEW LEDFORD	1	HARBOR CAMP/	HARBOR CAMP/	
E-50158 DZR3 INLAND TIMBER	09/26	JIM DAUGHTERY	2	HARBOR CAMP/	HARBOR CAMP/	
E-50068 FEL1 INLAND TIMBER	09/29	SHANE DOUGHERTY	2	HARBOR CAMP/	HARBOR CAMP/	
E-50070 LOGL MARK JONES TRUCKING	09/26	RON STROHM	2	HARBOR CAMP/	HARBOR CAMP/	
E-50302 LOGP MARK JONES TRUCKING	09/26	ERIK HELLENTHAL	2	HARBOR CAMP/	HARBOR CAMP/	
E-50287 SKD1 WARNER ENTERPRISES	10/02	GARRETTE STEVENS	2	HARBOR CAMP/	HARBOR CAMP/	
E-399 ENG6 ALLEN FIRE	09/25	PETE ALLEN	3	HARBOR CAMP/	HARBOR CAMP/	
E-50226 UTV (LEDFORD)				HARBOR CAMP/	HARBOR CAMP/	
O-50438 TFLD	09/27	RYAN LOBRE	1	HARBOR CAMP/	HARBOR CAMP/	
O-827 TFLD (T)	09/24	LIAM DILLAWAY	1	HARBOR CAMP/	HARBOR CAMP/	
O-50458 HEQB	09/28	ANDREY ZIMMERMAN (T)	1	HARBOR CAMP/	HARBOR CAMP/	
E-232 MBM2 WARREN KIRK PARTRIDGE	09/24	MICHELLE PARTRIDGE	2	HARBOR CAMP/	HARBOR CAMP/	
E-50329 EXC2 AXSUS ENTERPRISES	10/02	RYAN CUNNINGTON	2	HARBOR CAMP/	HARBOR CAMP/	
O-50436 HEQB	09/28	GRAHAM CASON	1	HARBOR CAMP/	HARBOR CAMP/	
E-50146 ENG6 WILDLAND FIRE SERVICES	09/30	RHYS VAN ANDERSON	3	HARBOR CAMP/	HARBOR CAMP/	
E-50252 WTS2 TABLE MOUNTAIN	10/01	GRAHAM COLTON	1	HARBOR CAMP/	HARBOR CAMP/	
E-50224 UTV (ZIMMERMAN)				HARBOR CAMP/	HARBOR CAMP/	
8. Division/Group Communication Summary						
Function	Channel	RX Frequency N/W	RX Tone/NAC	TX Frequency N/W	TX Tone/NAC	Mode
TACTICAL	TAC 3	168.6000	192.8	168.6000	192.8	A
COMMAND	CMD 6	173.0625	162.2	162.1625	162.2	A
AIR TO GROUND	A/G TAC	169.4875	000.0	169.4875	000.0	A
AIR TO GROUND	VMED 29	155.3475	156.7	155.3475	156.7	A
9. Prepared By (Resource Unit Leader)			Approved By (Planning Section Chief)		Date	Time
BECKY NELSON; SANDY DODGE			JIM STONE, ALEX ENNA (T)		09/23/2023	1700

**Division/Group Assignment List (ICS 204 WF)**  
Controlled Unclassified Information//Basic

1. Incident Name: SMITH RIVER COMPLEX NORTH			3.			
2. Operational Period: DAY SHIFT			Branch:  VIII		Division/Group  F	
Date/Time From: 09/24/2023 0700 SUN		Date/Time To: 09/24/2023 2100 SUN				
4. Operations Personnel						
PLANNING OPERATIONS		MEL DURRANT		FIELD OPERATIONS		ROD BONACKER
BRANCH DIRECTOR		GORDON FOSTER		DIVISION/GROUP SUPERVISOR		RENEE JACK JYOTA SMITH-HOWARD (T)
5. Resources Assigned this Period						
Strike Team / Task Force / Resource Designator		LWD	Leader	Number Persons	Drop Off PT./Time	Pick Up PT./Time
O-50434 FALB (T)		09/27	COOPER SEMPLE	1	HARBOR CAMP/	HARBOR CAMP/
O-50098 FMOD TOP NOTCH		09/25	CONNOR SOCKLER	2	HARBOR CAMP/	HARBOR CAMP/
O-50533 FMOD THE ART OF FELLING		10/05	VICTORIA HOUSER	2	HARBOR CAMP/	HARBOR CAMP/
E-50339 FORW AXSUS 9513		10/07	RUEBEN AKRE	2	HARBOR CAMP/	HARBOR CAMP/
E-50340 FORW AXSUS 1439		10/07	JUSTIN GARLAND	2	HARBOR CAMP/	HARBOR CAMP/
O-50406 REAF (T)		10/01	CHARLES GRELL	1	HARBOR CAMP/	HARBOR CAMP/
O-50502.9 SOF2		10/01	RENEE LAMOREAUX	1	HARBOR CAMP/	HARBOR CAMP/
O-50495 SOFR (T)		09/25	JOSH LEUTZINGER	1	HARBOR CAMP/	HARBOR CAMP/
O-50397 SOF2		09/25	THOMAS GREILING	1	HARBOR CAMP/	HARBOR CAMP/
O-50474 MEDIC 6		09/30	DUSTIN YUAN	1	HARBOR CAMP/	HARBOR CAMP/
E-50259 AMBO 5		09/30	CODY BAKER	2	HARBOR CAMP/	HARBOR CAMP/
-			TOTAL	39		
6. Control Operations/Work Assignments: Task: Construct secondary containment line. Purpose: To minimize the impact of fire to the communities of Smith River and Brookings. End State: Impacts to the communities of Smith River and Brookings have been minimized.						
7. Special Instructions: SOF2 Lamoreaux, SOF2 Greiling and SOFR (T) Leutzinger covering both DIV E & F. REAF(T) Charlie Grell will be in both DIV E & F. REAF Adam Bucher is roaming as needed. Will contact DIVS upon entering respective divisions. Please use bleach treatment in all water applied to the fire. Bleach is in supply and at the lunch pickup area. 1 gallon of bleach to 1,000 gallons of water.						
8. Division/Group Communication Summary						
Function	Channel	RX Frequency N/W	RX Tone/NAC	TX Frequency N/W	TX Tone/NAC	Mode
TACTICAL	TAC 3	168.6000	192.8	168.6000	192.8	A
COMMAND	CMD 6	173.0625	162.2	162.1625	162.2	A
AIR TO GROUND	A/G TAC	169.4875	000.0	169.4875	000.0	A
AIR TO GROUND	VMED 29	155.3475	156.7	155.3475	156.7	A
9. Prepared By (Resource Unit Leader) BECKY NELSON; SANDY DODGE			Approved By (Planning Section Chief) JIM STONE, ALEX ENNA (T)		Date 09/23/2023	Time 1700

**Division/Group Assignment List (ICS 204 WF)**  
Controlled Unclassified Information//Basic

1. Incident Name: SMITH RIVER COMPLEX NORTH			3.			
2. Operational Period: DAY SHIFT			Branch:  X	Division/Group  G/H		
Date/Time From: 09/24/2023 0700 SUN	Date/Time To: 09/24/2023 2100 SUN					
4. Operations Personnel						
PLANNING OPERATIONS	MEL DURRANT	FIELD OPERATIONS		ROD BONACKER		
BRANCH DIRECTOR		DIVISION SUPERVISOR		MACKER BABB (9/27)		
5. Resources Assigned this Period						
Strike Team / Task Force / Resource Designator	LWD	Leader	Number Persons	Drop Off PT./Time	Pick Up PT./Time	
O-50455 TFLD	09/29	JESSICA STEFFEN	1	LAKE SELMAC ICP/	LAKE SELMAC ICP/	
C-50054 CRW2 OC 18 (CA-PNF)	09/28	ESLY ROMAN	22	LAKE SELMAC ICP/	LAKE SELMAC ICP/	
(IA) E-50148 ENG6 CARBON WORKS	09/26	ALBERTA MEDRANO	3	LAKE SELMAC ICP/	LAKE SELMAC ICP/	
E-50079 UTV MOTO TOYS (STEFFEN)				H13/	H13/	
E-50080 UTV BOSS OF THE WOODS (BABB)				H13/	H13/	
O-50502.10 SOF2	10/01	DAN RIDENOUR	1	LAKE SELMAC ICP/	LAKE SELMAC ICP/	
O-50471 SOF2	09/29	THOMAS NASH	1	LAKE SELMAC ICP/	LAKE SELMAC ICP/	
E-50015 REMS 1	10/02	DAN BLAUL	4	LAKE SELMAC ICP/	LAKE SELMAC ICP/	
		TOTAL	32			
6. Control Operations/Work Assignments:						
Task: Initiate suppression repair and backhaul equipment. Work in cooperation with incident READ's.						
Purpose: Mitigate fire suppression impacts to agency lands.						
End State: Fireline is repaired to agency standards.						
8. Division/Group Communication Summary						
Function	Channel	RX Frequency N/W	RX Tone/NAC	TX Frequency N/W	TX Tone/NAC	Mode
TACTICAL	TAC 4	166.7250	192.8	166.7250	192.8	A
COMMAND	CMD 8	170.3000	162.2	164.0000	162.2	A
AIR TO GROUND	A/G TAC	169.4875	0.00	169.4875	0.00	A
AIR TO GROUND	VMED 29	155.3475	156.7	155.3475	156.7	A
9. Prepared By (Resource Unit Leader)		Approved By (Planning Section Chief)		Date	Time	
BECKY NELSON; SANDY DODGE		JIM STONE, ALEX ENNA (T)		09/23/2023	1700	

**Division/Group Assignment List (ICS 204 WF)**  
Controlled Unclassified Information//Basic

1. Incident Name:			3.			
SMITH RIVER COMPLEX NORTH			Branch:		Division/Group	
2. Operational Period: DAY SHIFT			X		G / H	
Date/Time From: 09/24/2023 0700      SUN	Date/Time To: 09/24/2023 2100      SUN					
4. Operations Personnel						
PLANNING OPERATIONS		MEL DURRANT		FIELD OPERATIONS		
BRANCH DIRECTOR				ROD BONACKER		
				DIVISION SUPERVISOR		
				MACKER BABB (9/27)		
7. Special Instructions:						
(IA) - IA Resource						
<p>**SOFs Ridenour and Nash working in Divisions H/G, I/K, and Suppression Repair. SOF2 Lamoreaux, SOF2 Greiling and SOFR (T) Leutzinger covering both DIV E &amp; F. AMBO 3 available to Divisions H, I/K, and Suppression Repair; staged at DP24</p> <p>REAF (T) Charlie Grell will be in both DIV E &amp; F. REAF Adam Bucher is roaming as needed. Will contact DIVS upon entering respective divisions.</p> <p>Please use bleach treatment in all water applied to the fire. Bleach is in supply and at the lunch pickup area. 1 gallon of bleach to 1,000 gallons of water.</p> <p>Pacific Power task force working in division. Anna Arritola is the contact.</p>						
8. Division/Group Communication Summary						
Function	Channel	RX Frequency N/W	RX Tone/NAC	TX Frequency N/W	TX Tone/NAC	Mode
TACTICAL	TAC 4	166.7250	192.8	166.7250	192.8	A
COMMAND	CMD 8	170.3000	162.2	164.0000	162.2	A
AIR TO GROUND	A/G TAC	169.4875	0.00	169.4875	0.00	A
AIR TO GROUND	VMED 29	155.3475	156.7	155.3475	156.7	A
9. Prepared By (Resource Unit Leader)		Approved By (Planning Section Chief)		Date		Time
BECKY NELSON; SANDY DODGE		JIM STONE, ALEX ENNA (T)		09/23/2023		1700



**Division/Group Assignment List (ICS 204 WF)**  
Controlled Unclassified Information//Basic

1. Incident Name:				3.			
SMITH RIVER COMPLEX NORTH				Branch:		Division/Group	
2. Operational Period: DAY SHIFT				X		I / K	
Date/Time From: 09/24/2023 0700 SUN		Date/Time To: 09/24/2023 2100 SUN					
4. Operations Personnel							
PLANNING OPERATIONS		MEL DURRANT		FIELD OPERATIONS		ROD BONACKER	
BRANCH DIRECTOR				DIVISION SUPERVISOR		ROD BJORVIK	
5. Resources Assigned this Period							
Strike Team / Task Force / Resource Designator		LWD	Leader	Number Persons	Drop Off PT./Time	Pick Up PT./Time	
6. Control Operations/Work Assignments:							
<p>Task: Continue suppression repair and backhaul equipment. Work in cooperation with incident READ's. Maintain operational readiness for IA.</p> <p>Purpose: Mitigate fire suppression impacts to private and agency lands. Prevent future fire growth and impacts to the surrounding communities.</p> <p>End State: Fireline is repaired to agency standards. Provide incident support and respond to IA as needed.</p>							
7. Special Instructions:							
<p>(IA) - IA resource</p> <p>SOFs Ridenour and Nash working in Divisions H/G, I/K, and Suppression Repair.</p> <p>REMS2 available to Division I/K and Suppression Repair</p> <p>**AMBO3 available to Division I/K and Suppression Repair; staged at DP24</p> <p>**AMBO4 available to Division I/K and Suppression Repair; staged at DP271</p> <p>REAF Adam Bucher is roaming as needed. Will contact DIVS upon entering respective divisions.</p> <p>Please use bleach treatment in all water applied to the fire. Bleach is in supply and at the lunch pickup area. 1 gallon of bleach to 1,000 gallons of water.</p>							
8. Division/Group Communication Summary							
Function	Channel	RX Frequency N/W	RX Tone/NAC	TX Frequency N/W	TX Tone/NAC	Mode	
TACTICAL	TAC 3	168.6000	192.8	168.6000	192.8	A	
COMMAND	CMD 7	172.9875	162.2	165.0500	162.2	A	
AIR TO GROUND	A/G TAC	169.4875	0.00	169.4875	0.00	A	
AIR TO GROUND	VMED 29	155.3475	156.7	155.3475	156.7	A	
9. Prepared By (Resource Unit Leader)			Approved By (Planning Section Chief)			Date	Time
BECKY NELSON; SANDY DODGE			JIM STONE, ALEX ENNA (T)			09/23/2023	1700

**Division/Group Assignment List (ICS 204 WF)**  
Controlled Unclassified Information//Basic

1. Incident Name:			3.			
SMITH RIVER COMPLEX NORTH			Branch:		Division/Group	
2. Operational Period: DAY SHIFT			X		<b>SUPPRESSION REPAIR</b>	
Date/Time From: 09/24/2023 0700      SUN	Date/Time To: 09/24/2023 2100      SUN					
4. Operations Personnel						
PLANNING OPERATIONS		MEL DURRANT		FIELD OPERATIONS		
BRANCH DIRECTOR				DIVISION SUPERVISOR		
				JON AIRHART (9/28)		
5. Resources Assigned this Period						
Strike Team / Task Force / Resource Designator	LWD	Leader	Number Persons	Drop Off PT./Time	Pick Up PT./Time	
O-50417 TFLD	09/27	KORY DAVIS	1	LAKE SELMAC ICP/	LAKE SELMAC ICP/	
O-50512 TFLD (T)	10/01	OMAR SUTHERLAND	1	LAKE SELMAC ICP/	LAKE SELMAC ICP/	
C-112 CR2I NEW YORK - NYS #1	09/27	ERIC STRATTON	20	LAKE SELMAC ICP/	LAKE SELMAC ICP/	
C-50053 CRW2 WY'EAST WILDLANDS	09/28	CHRISTOPHER HANEY	20	LAKE SELMAC ICP/	LAKE SELMAC ICP/	
E-50330 EXC2 DC FIRE LLC	10/03	LAYNE PAULY	2	LAKE SELMAC ICP/	LAKE SELMAC ICP/	
O-50435 HEQB	09/26	SARAH LEE	1	LAKE SELMAC ICP/	LAKE SELMAC ICP/	
O-50519 HEQB	10/05	RYAN PAPENDORF	1	LAKE SELMAC ICP/	LAKE SELMAC ICP/	
O-50442 HEQB (T)	09/27	JOSH BISSENAS	1	LAKE SELMAC ICP/	LAKE SELMAC ICP/	
O-50443 HEQB (T)	09/27	CHAD FOSTER	1	LAKE SELMAC ICP/	LAKE SELMAC ICP/	
E-50273 EXC2 ZEB'S TREE SERVICE	10/07	JESSICA CARPENTER	2	LAKE SELMAC ICP/	LAKE SELMAC ICP/	
E-50332 EXC2 FRANK S ZABEL TRUCKING	10/03	FRANK ZABEL	2	LAKE SELMAC ICP/	LAKE SELMAC ICP/	
E-50328 EXC2 AXSUS	10/04	WADE RAINBOLT	2	LAKE SELMAC ICP/	LAKE SELMAC ICP/	
E-50319 EXC4 B&S EXCAVATING INC.	10/01	KYLE BEAIRSTO	2	LAKE SELMAC ICP/	LAKE SELMAC ICP/	
E-50331 EXC2 JERRY A JUNGWIRTH JR	10/02	JERRY JUNGWIRTH	2	LAKE SELMAC ICP/	LAKE SELMAC ICP/	
E-50334 SKD2 RIDGE LOGGING, INC	10/03	JASON WALKER	2	LAKE SELMAC ICP/	LAKE SELMAC ICP/	
E-50280 UTV (AIRHART)				LAKE SELMAC ICP/	LAKE SELMAC ICP/	
O-50501 REAF	10/01	STACY JOHNSON	1	LAKE SELMAC ICP/	LAKE SELMAC ICP/	
O-50078 REAF	09/25	JOSEF PORTER	1	LAKE SELMAC ICP/	LAKE SELMAC ICP/	
8. Division/Group Communication Summary						
Function	Channel	RX Frequency N/W	RX Tone/NAC	TX Frequency N/W	TX Tone/NAC	Mode
TACTICAL	TAC 2	168.2000	192.8	168.2000	192.8	A
COMMAND	CMD 7	172.9875	162.2	165.0500	162.2	A
AIR TO GROUND	A/G TAC	169.4875	0.00	169.4875	0.00	A
AIR TO GROUND	VMED 29	155.3475	156.7	155.3475	156.7	A
9. Prepared By (Resource Unit Leader)			Approved By (Planning Section Chief)		Date	Time
BECKY NELSON; SANDY DODGE			JIM STONE, ALEX ENNA (T)		09/23/2023	1700

**Division/Group Assignment List (ICS 204 WF)**  
Controlled Unclassified Information//Basic

1. Incident Name:			3.			
SMITH RIVER COMPLEX NORTH			Branch:		Division/Group	
2. Operational Period: DAY SHIFT			X		<b>SUPPRESSION REPAIR</b>	
Date/Time From: 09/24/2023 0700      SUN	Date/Time To: 09/24/2023 2100      SUN					
4. Operations Personnel						
PLANNING OPERATIONS		MEL DURRANT		FIELD OPERATIONS		
BRANCH DIRECTOR				ROD BONACKER		
				DIVISION SUPERVISOR		
				JON AIRHART (9/28)		
5. Resources Assigned this Period						
Strike Team / Task Force / Resource Designator		LWD	Leader	Number Persons	Drop Off PT./Time	Pick Up PT./Time
O-50123 REMS 2		10/01	CURTIS ULRICH	2	LAKE SELMAC ICP/	LAKE SELMAC ICP/
-			TOTAL	64		
6. Control Operations/Work Assignments:						
<p>Task: Continue suppression repair. Work in cooperation with incident READ's.                  Purpose: Mitigate fire suppression impacts to private and agency lands.                  End State: Fireline is repaired to agency standards.</p>						
7. Special Instructions:						
<p>*REMS2 available to Divisions I/K and Suppression Repair                  AMBO3 available to Division I/K and Suppression Repair; staged at DP24                  AMBO4 available to Division I/K and Suppression Repair; staged at H11</p> <p>**SOFs Ridenour and Nash working in Divisions H/G, I/K, and Suppression Repair.</p> <p>REAF Adam Bucher is roaming as needed. Will contact DIVS upon entering respective divisions.</p> <p>Please use bleach treatment in all water applied to the fire. Bleach is in supply and at the lunch pickup area. 1 gallon of bleach to 1,000 gallons of water.</p>						
8. Division/Group Communication Summary						
Function	Channel	RX Frequency N/W	RX Tone/NAC	TX Frequency N/W	TX Tone/NAC	Mode
TACTICAL	TAC 2	168.2000	192.8	168.2000	192.8	A
COMMAND	CMD 7	172.9875	162.2	165.0500	162.2	A
AIR TO GROUND	A/G TAC	169.4875	0.00	169.4875	0.00	A
AIR TO GROUND	VMED 29	155.3475	156.7	155.3475	156.7	A
9. Prepared By (Resource Unit Leader)			Approved By (Planning Section Chief)		Date	Time
BECKY NELSON; SANDY DODGE			JIM STONE, ALEX ENNA (T)		09/23/2023	1700



**AIR OPERATIONS SUMMARY ICS-220**

Incident Name / Number		Sunrise		Cutoff		Sunset	
SMITH RIVER COMPLEX - CA-SRF-008968		7:04		7:34		19:08	
General Remarks: Safety Notes, Hazards, Air Operations Special Equipment, etc. TRACK ALL DIPSITE LOCATIONS / NUMBER OF DIPS / GALLONS TAKEN. TRACK ALL DROP LOCATIONS / NUMBER OF DROPS / GALLONS DROPPED. COLLECT ALL GPS DATA IN DEGREES, MINUTES, DECIMAL MINUTES, FORMAT. AVOID aerial application of retardant / foam / agent within 300' of waterways, bodies of water, etc. If retardant / foam / agent is dropped within these areas, immediately notify the AOB and provide the following information: Lat / long, estimated number of gallons and a map detailing the area.							
Record % Buckets Dropped in Cost Summaries Notes: % Fed and % Private							

Time Prepared	Date Prepared	Prepared By
15:00	Saturday, September 23, 2023	Isidoro Solis/Norm Sealing
19:38	Sunday, September 24, 2023	Operational Period - Time 0700-2100
Helibase Information	TFR Information	Rescue Ship Information
Name Cave	Request # A-160	Day Helist
Latitude 42 06.260	Rectangle NM	Name YNP S-Haul
Longitude 123 40.916	Altitude: 10,000' MSL	Phone 541-618-2510
	Centerpoint: Multi Lat	Make/Model AS-350B3
		Location Merfin, OR
	NOTAMS: 3/0449	Request Procedure for These Aircraft: Shorthaul through Regus Dispatch (Aircraft)
	Frequency 126.0750	See Medical Plan For Additional Info
	<a href="http://tfr.faa.gov/tfr2/list.html">http://tfr.faa.gov/tfr2/list.html</a>	

Frequency	TX	Tone	RX	Tone	AM / FM	Position	Name	Phone	Trainee/Helibase	Phone
Command-South (Linked)	See South 205				FM	SOUTH AOB	Isl Solis	760-417-9298		
Command-North (Linked)	See North 205				FM	SOUTH ASGS	Mark Empey	928-245-1798		
AIR / GROUND - TACTICAL	169.4875	0.0000	169.4875	0.0000	FM	SOUTH ASGS	Staci Dickson	530-277-5153		
AIR/AIR ROTARY WING	123.7250	0.0000	123.7250	0.0000	AM					
TFR	126.0750	0.0000	126.0750	0.0000	AM					
F/W AIR TACTICS	173.7000	0.0000	173.7000	0.0000	FM	NORTH AOB	Tom Rawlings	406-261-1673	Cave Helibase	971-713-0297
AIR/GROUND COMMAND	173.8500	0.0000	173.8500	0.0000	FM	NORTH ASGS(t)	Cammy Roy	907-750-6620	Cave Email	lvhb2023@gmail.com
V/MED 28-MEDICAL North	155.3475	156.7	155.3475	156.7	FM	Cave HEBM				
TOLC	168.1375	0.0000	168.1375	0.0000	FM					
CALCORD - MEDICAL South	156.0750	156.7 (6)	156.0750	156.7 (6)	FM					
AIRGUARD - Emergency Only	168.6250	110.9 (1)	168.6250	0.0000	FM	UR36	Jacob Shuler	707-672-3187		

FAA #	Type	Make/Model	Helibase	Avail	Start	Remarks	Start	Avail	Base	Make/Model	Helibase	Avail	Start	Remarks
HB-16FH	1	UH-60	Cave	0800	0830	LL BUCKET		0800		AS-350B3	Cave	0800	0830	PAX/RECON/LL
H-570	2	Bell 212	Cave	0800	0830	LL BUCKET								
H-535	3	Bell 407	Gasquet	0800	0830	PAX/RECON/LL								
UR36	3	DJI M600	Gasquet	0800	0830	IR/PSD (Shuler Mod.)								
SOUTH	MEDICAL A/C													
TBD	3	MH-65	Humboldt			Coast Guard								
H-902	2	UH1	Kneeland			Cal Fire								
H-14	3	A-Star B3	Redding			CHP								
H-407	2	Bell 205	Montague			Night Hoist								YNP Shorthaul, last shift 9/26

FIXED WING ( Use Page 2 if Needed )														
FAA #	Type	Make/Model	Base	Avail	Start	Remarks	Start	Avail	Base	Make/Model	Helibase	Avail	Start	Remarks
TBD	1	TBD	RDD	0800	0830	ATGS (RDD) (Pool)		0800	MFR	TBD		0800	0830	ATGS (MFR) (Pool)



# INCIDENT RADIO COMMUNICATIONS PLAN (ICS 205)

## Controlled Unclassified Information//Basic

1. Incident Name:		2. Date/Time Prepared:		3. Operational Period:							
BRANCH V111 & X (CMD)		Date: 09/23/2023		Date/Time From: 09/24/2023							
SMITH RIVER COMPLEX -- NORTH Pg 1		Time: 17:30		0700							
Date/Time To: 09/24/2023		2300									
4. Basic Radio Channel Use:											
Zone Group	Ch #	Function	Channel Name/Trunked Radio System Talkgroup	Assignment	RX Freq	RX Tone/NAC	TX Freq	TX Tone/NAC	Mode (A,D, or M)	Remarks	
	1	TACTICAL	TAC 1	UTILITY GROUP	168.0500	192.8	168.0500	192.8	A		
	2	TACTICAL	TAC 2	SUPPRESSION	168.2000	192.8	168.2000	192.8	A	SHARED	
	3	TACTICAL	TAC 3	DIV K&I / DIV F	168.6000	192.8	168.6000	192.8	A	DIV K&I SHARED WITH DIV F	
	4	TACTICAL	TAC 4	DIV G / H	166.7250	192.8	166.7250	192.8	A	DIV GOLF / HOTEL	
	5	TACTICAL	TAC 5	UNASSIGNED	166.7750	192.8	166.7750	192.8	A		
	6	CMD	CMD 6	WEST DIV's	173.0625	162.2	162.1625	162.2	A	BOSLEY MT	
	7	CMD	CMD 7	SOUTH/EAST DIV's	172.9875	162.2	165.0500	162.2	A	BOLAN MT	
	8	CMD	CMD 8	NORTH DIV's	170.3000	162.2	164.0000	162.2	A	8 DOLLAR MTN (ILLINOIS VLY)	
	9	CMD	CMD 9	CENTRAL DIV's	169.0750	162.2	162.4125	162.2	A	MONKEY CR RIDGE (S)	
	10	CMD	CMD 10	NORTHWEST DIV's	173.0500	162.2	164.8500	162.2	A	VULCAN PK (N)	
	11	TACTICAL	NIFC T4	DIV YY	166.7250	131.8	166.7250	131.8	A	S RESOURCE INTEROP	
	12	TACTICAL	TAC 12	DIV E	168.2500	192.8	168.2500	192.8	A		
	13	AIR TO GROUND	A/G CMD	ALL DIVS	173.8500	000.0	173.8500	000.0	A	BRANCH AND DIVISION USE	
	14	AIR TO GROUND	A/G TAC	ALL DIVS	169.4875	000.0	169.4875	000.0	A	AIR TO GROUND TACTICAL	
	15	AIR MEDICAL	V/MED 29	ALL DIVS	155.3475	156.7	155.3475	156.7	A	EMS AIR COORDINATION	
	16	AIR TO GROUND	AIRGUARD	ALL DIVS	168.6250	000.0	168.6250	110.9	A	EMERGENCY AIRCRAFT CONTACT	
5. Special Instructions: COMMUNICATIONS NORTH PHONE NUMBER: 971-245-0255 (NORTH ONLY)											
6. Prepared By COM1				Name: Mike Norman		Signature: <i>M Norman</i>					
ICS 205				IAP Page		Date/Time: 9/23/2023 17:30					

# INCIDENT RADIO COMMUNICATIONS PLAN (ICS 205)

## Controlled Unclassified Information//Basic

1. Incident Name: INITIAL ATTACK ZONE SMITH RIVER COMPLEX – NORTH Pg 2

2. Date/Time Prepared: 09/23/2023 1630 Date/Time From: 09/24/23 0700 Date/Time To: 09/24/23 2300

3. Operational Period:

Zone Group	Ch #	Function	Channel Name/Trunked Radio System Talkgroup	Assignment	RX Freq	RX Tone/NAC	TX Freq	TX Tone/NAC	Mode (A,D, or M)	Remarks
IA	1	CMD	MONKEY	IA	172.3750	000.0	164.1750	110.9	A	6 RIVERS MONKEY RIDGE
IA	2	CMD	ONION	IA	171.3875	67.0	164.9625	173.8	A	RSF ONION
IA	3	CMD	FIDDLER	IA	171.3875	67.0	164.9625	179.9	A	RSF FIDDLER
IA	4	CMD	BOLAN	IA	171.3875	67.0	164.9625	186.2	A	RSF BOLAN
IA	5	CMD	MT EMILY	IA	170.3750	67.0	164.1250	118.8	A	RSF GOLD BEACH (EMILY)
IA	6	CMD	ODF SEXTON	IA	151.1450	000.0	159.2850	179.9	A	ODF SEXTON
IA	7	CMD	ODF GRAY BK	IA	151.1450	000.0	159.2850	151.4	A	ODF GREY BACK
IA	8	TAC	ODF RED	IA	151.3400	000.0	151.3400	156.7	A	ODF RED
IA	9	A/G	ODF WHITE	IA	151.3100	000.0	151.3100	156.7	A	ODF WHITE A/G
IA	10	TAC	ODF RVT	IA	159.2400	000.0	159.2400	156.7	A	ODF RVT
IA	11	A/G	FS A/G51	IA	168.3125	000.0	168.3125	000.0	A	A/G 51
IA	12	A/G	FS A/G62	IA	169.3625	000.0	169.3625	000.0	A	A/G 62
IA	13	A/G	A/G CMD	IA	173.8500	000.0	173.8500	000.0	A	
IA	14	A/G	A/G TAC	IA	169.4875	000.0	169.4875	000.0	A	
IA	15	A/G	V/MED 29	IA	155.3475	156.7	155.3475	156.7	A	EMS AIR COORDINATION
IA	16	A/G	CAL CORD	IA	156.0750	156.7	156.0750	156.7	A	EMS AIR CORD

5. Special Instructions: COMMUNICATIONS NORTH PHONE NUMBER: 971-245-0255 (NORTH ONLY)

6. Prepared By (Communications Unit Leader) Name: Mike Norman Signature: *[Signature]*

ICS 205 IAP Page Date/Time: 9/23/2023 17:30

# ICS 205 - INCIDENT RADIO COMMUNICATIONS PLAN

<b>1. Incident Name:</b> SMITH RIVER COMPLEX SOUTH Incident Channels		<b>2. Date/Time Prepared</b> Date: 09/23/2023 Time: 1930		<b>3. Operational Period:</b> Date From: 09/24/23 Time From: 0700 Date To: Time To: 0700					
<b>4. Communications</b>									
Ch#	Function	Name	Assigned To	Rx Freq	Rx Tone	Tx Freq	Tx Tone	Mode	Notes
1	COMMAND	NIFC C3	ALL BRANCHES	170.4250	(T3) 131.8	168.0750	(T3) 131.8	A	CAMP 6 all rpt. linked to ICP
2	COMMAND	NIFC C34	ALL BRANCHES	173.9750	(T3) 131.8	164.8625	(T3) 131.8	A	MONKEY RIDGE all rpt. linked to ICP
3	COMMAND	NIFC C35	ALL BRANCHES	173.8625	(T3) 131.8	163.8250	(T3) 131.8	A	SHIP LOOKOUT all rpt. linked to ICP
4	COMMAND	NIFC C48	ALL BRANCHES	165.4625	(T3) 131.8	162.1750	(T3) 131.8	A	HIGH DIVIDE all rpt. linked to ICP
5	COMMAND	NIFC C55	ALL BRANCHES	173.8375	(T3) 131.8	165.5125	(T3) 131.8	A	RC DIP all rpt. linked to ICP
6	TACTICAL	NIFC T1	DIV RR/STEVEN REPAIR	168.0500	(T3) 131.8	168.0500	(T3) 131.8	A	
7	TACTICAL	NIFC T3	SMITH REPAIR	168.6000	(T3) 131.8	168.6000	(T3) 131.8	A	
8	TACTICAL	NIFC T4	DIV MM / PP	166.7250	(T3) 131.8	166.7250	(T3) 131.8	A	
9	TACTICAL	NIFC T5	DIV SS/ VV	166.7750	(T3) 131.8	166.7750	(T3) 131.8	A	
10	TACTICAL	NIFC T6	GASQUET REPAIR	168.2500	(T3) 131.8	168.2500	(T3) 131.8	A	
11	TACTICAL	VFIRE 22	DIV YY	154.2650	(T6) 156.7	154.2650	(T6) 156.7	A	
12	TACTICAL	VFIRE 24	DIV LL	154.2725	(T6) 156.7	154.2725	(T6) 156.7	A	
13	A/G CMD	A/G CMD	ALL BRANCHES	173.8500	0.0	173.8500	0.0	A	
14	A/G TAC	A/G TAC	A/G TACTICAL	169.4875	0.0	169.4875	0.0	A	
15	TACTICAL	CALCORD	ALL DIVS	156.0750	(T6) 156.7	156.0750	(T6) 156.7	A	EMS AIR COORDINATOR
16	AIRGUARD	AIRGUARD	ALL DIVS	168.6250	0.0	168.6250	(T1) 110.9	A	EMERGENCY USE ONLY
17									
18									
19									
20	AIRGUARD	AIRGUARD	EMERGENCY	168.6250	0.0	168.6250	(T1) 110.9	A	
<b>5. Special Instructions</b>									
COMMUNICATION PHONE # 208-850-7093 24HOUR SHOP									
<b>6. Prepared by (Communications Unit Leader):</b> Name: Sal Bonilla Jr., Kevin Janes, Tim Maguire CIIMT 4 COM1			Signature: _____						
ICS 205 - CONTROLLED UNCLASSIFIED INFORMATION//BASIC			Date/Time: 09/23/23 1930						

# ICS 205 - INCIDENT RADIO COMMUNICATIONS PLAN

<b>1. Incident Name:</b> SMITH RIVER IA Page 2	<b>2. Date/Time Prepared</b> Date: 09/23/2023 Time: 1930	<b>3. Operational Period:</b> Date To: 09/25/23 Time To: 0700
--	--	---

4. Communications										
Ch#	Function	Name	Assigned To	Rx Freq	Rx Tone	Tx Freq	Tx Tone	Mode	Notes	
1	DISPATCH	SRF 12	DISPATCH	172.3750	0.0	164.1750	(T12) 127.3	A	GORDON MOUNTAIN	
2	DISPATCH	SRF 4	DISPATCH	172.3750	0.0	164.1750	(T4) 136.5	A	SHIP MOUNTAIN	
3	DISPATCH	SRF 1	DISPATCH	172.3750	0.0	164.1750	(T1) 110.9	A	MONKEY RIDGE	
4	DISPATCH	HUU RPT	FORTUNA	151.2500	(T1) 110.9	159.4050	(T14) 151.4	A	FORTUNA	
5	TACTICAL	NIFC T2	TACTICAL	168.2000	0.0	168.2000	0.0	A	I/A SURGE	
6	TACTICAL	R5 T4	TACTICAL	166.5500	0.0	166.5500	0.0	A		
7	TACTICAL	R5 T5	TACTICAL	167.1125	0.0	167.1125	0.0	A		
8	TACTICAL	R5 PROJ	TACTICAL	168.6625	0.0	168.6625	0.0	A		
9	TACTICAL	VTAC 14	TACTICAL	159.4725	(T6) 156.7	159.4725	(T6) 156.7	A		
10	TACTICAL	CDF T3	TACTICAL	151.1750	(T16) 192.8	151.1750	(T16) 192.8	A		
11	TACTICAL	R5 T6	TACTICAL	168.2375	0.0	168.2375	0.0	A		
12	TACTICAL	LOCAL	GASQUET VFD	154.4150	0.0	154.4150	(T16) 192.8	A	GASQUET VFD	
13	A/G	A/G-43	PRIMARY A/G	167.6000	0.0	167.6000	0.0	A	PRIMARY A/G	
14	A/G	A/G-08	SECONDARY A/G	166.8750	0.0	166.8750	0.0	A	SECONDARY A/G	
15	TACTICAL	CALCORD	ALL DIVS	156.0750	(T6) 156.7	156.0750	(T6) 156.7	A	EMS AIR COORDINATOR	
16	AIRGUARD	AIRGUARD	EMERGENCY	168.6250	0.0	168.6250	(T1) 110.9	A	EMERGENCY USE ONLY	
17										
18										
19										
20	AIRGUARD	AIRGUARD	EMERGENCY	168.6250	0.0	168.6250	(T1) 110.9	A		

**5. Special Instructions**

<b>6. Prepared by (Communications Unit Leader):</b> Name: Sal Bonilla Jr., Kevin Janes, Tim Maguire CIIMT 4 COML	<b>Signature:</b>
ICS 205 - CONTROLLED UNCLASSIFIED INFORMATION//BASIC	NIMS IAP
	Date/Time: 09/23/23
	1930

Position	Name	Phone	Email
<b>COMMAND</b>			
Incident Commander	Stock, Kevin	541-410-2415	kevin.stock@usda.gov
Deputy Incident Commander	Ebert, Brian	541-969-3553	brian_ebert@firenet.gov
Liaison	Keith, Tim	503-779-7760	tim.efcc@gmail.com
Liaison	Turner, Slater	541-480-0104	slater.turner@usda.gov
Safety	Bishop, Jeff	541-480-1361	jeff_bishop@firenet.gov
Safety	Ridenour, Dan	541-589-1991	pridenour@centurylink.net
Safety	Lamoreaux, Renee	541-678-3047	rlfirefly@gmail.com
PIO2 (Lead)	Sichting, Pam	541-670-0812	pam_sichting@firenet.gov
PIO2	Cahill, Jim	360-399-9780	jim_cahill@firenet.gov

<b>PLANNING</b>			
PSC2	Jim Stone	541-977-5265	shaun_larson@firenet.gov
PSCC-t	Enna, Alex	541-410-1691	alex_enna@firenet.gov
PSCC (Harbor Camp)	Williams, Mike	828-835-0094	michael_j_williams@firenet.gov
SITL	Putman, Dale	541-410-6821	charles_putman@firenet.gov
GISS	Armstrong, Rachel	541-410-2392	rachel_armstrong@firenet.gov
FBAN	McDonald, Scott	541-993-3444	ebb-6241@charter.net
IMET	Matt Mehle	617-851-2042	mtrimet22@gmail.com
RESL	Dodge, Sandy	307-262-5877	sandra_dodge@firenet.gov
Documentation	Rohrbach, Chris	484-358-6258	
DMOB	Davis, Frank	541-220-8155	frank_davis@firenet.gov
ITSS	Dzialowy, Paul	541-680-7476	paul_dzialowy@firenet.gov
HR	Souders, Stew	360-259-3288	stew_souders@firenet.gov

<b>LOGISTICS</b>			
LSC	Ramming, Vicki	541-382-7229	Vsramming@gmail.com
Facilities	Miller, Nick	541-589-5527	n1miller@blm.gov
Communications		971-245-0255	
COML	Norman, Mike	928-245-2584	Mike.Norman@vfdmail.org
EQPM	Tschida, Austin	541-977-7477	atschida@blm.gov
SPUL (T)	Huffman, Glenn	509-899-5373	ghuffman@esf-r.org
SPUL	Brand, Karen	541-419-3851	
ORDM	Webb, Della	541-915-9650	della_webb@firenet.gov
Security	Burgess, Rico	541-280-2632	

<b>MEDICAL</b>			
MEDL	Lisa Poncelet	(206) 276-5509	lisamponcelet@gmail.com
MEDL	Zeb Watts	(541) 270-4131	zebron83179@yahoo.com

<b>FINANCE</b>			
FSC2	Morgan, Judy	541-620-0061	judy_morgan@firenet.gov
EQTR	Hargis, Debbie	541-420-2198	debra_hargis@firenet.gov
COMP	Kelly, Michael	509-669-4455	michael_kelly@firenet.gov
ICPI	Simmons, Michael P	541-480-7846	Mpsimmons01@yahoo.com

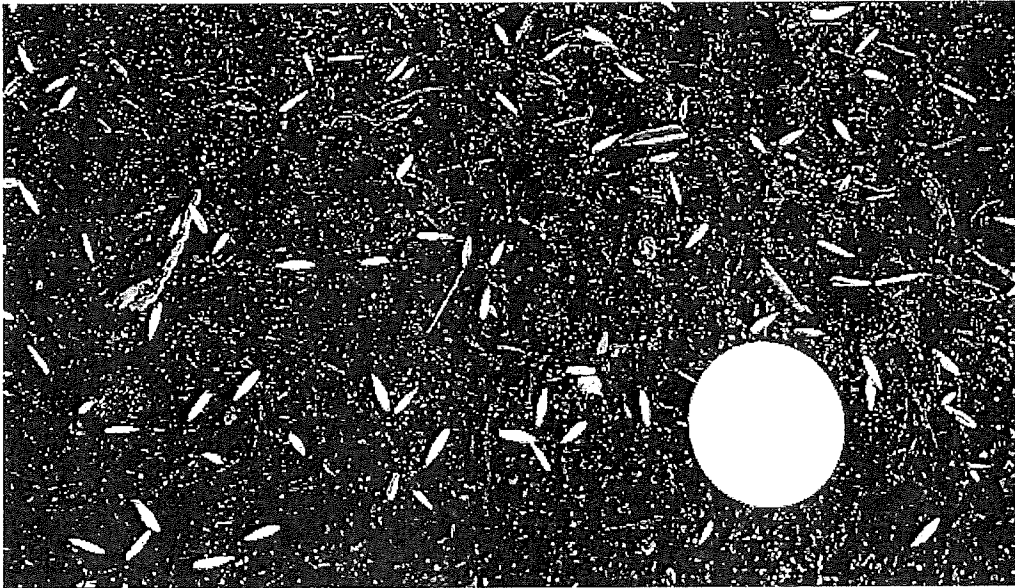
<b>OPS/AIR OPS</b>			
OSC	Durrant, Mel	541-419-1914	melvin.durrant@usda.gov
OSC	Robertson, Dave	541-408-1363	smokechaser01@gmail.com
OSC	Rod Bonaker	541-306-8685	blackbuttebooks@gmail.com
OSC	Foster, Gordon	541-419-4291	
DIVS	Dingmann, Drew	608-448-5555	
DIVS	Bird, Jamison	872-588-9586	
DIVS	Jack, Renee	202-280-5943	
DIVS(t)	Smith Howard, Jyota	971-285-6482	
DIVS	Babb, Macker	907-347-5455	
DIVS	Bjorvik, Rod	541-948-2971	
DIVS	Airhart, Jon	406-546-1509	
AOBD	Sealing, Norm	541-728-1872	norman.sealing@usda.gov
ASGS	Rawlings, Thomas	406-261-1673	

**Suppression Repair Seed and Straw General directions:**

Seed at a rate of about 20 lbs per acre.

Mulch at rate of about 10 bales per acre. Each bale is about 100 lbs.

1. Seed first before mulching. Cover should be light like the photo below about 20 seeds per square foot.



2. Straw comes after seed. Cover bare soil like the photo below.





Smith River Complex	Sunday, 9/24/2023
---------------------	-------------------

**Major Hazards, Risks and Mitigations**  
**Reference Risk Analysis for Mitigations**

Fatigue / <u>Complacency</u>	Hazard Trees, Green and Snags	Increment Weather <u>Thunderstorm's</u>
Wildlife	Gravity Hazards	Traffic Distracted driving

**DRIVING SAFETY**

Driving is one of the most hazardous things we do because we literally perform the task hundreds of times in the course of our daily lives we tend to take it for granted. Based on recent accident trends, vehicle accidents are the source of more deaths and serious injuries to wildland firefighters than any other single cause.

- To be a safe driver you have to want to be one. Take a good hard look at your driving habits. Are you training yourself to do the right things the right way, like fastening your seat belt, checking your mirrors, and maintaining safe following distances?
  
- Inattentiveness is a major contributing factor in motor vehicle accidents within the wildland firefighting community. Since the average adult attention span is 15-20 minutes we must develop techniques that allow us to refocus our attention on our driving.
  
- Many things can lure our attention away from our driving such as: fatigue, eating and drinking, reading directions and maps, writing, cell phone and radio use, conversation within the vehicle and music.
  - Drive only when you are well rested and alert and avoid driving during the hours of 10:00 PM and 6:00 AM. Take a 10 to 15 minute break after every 2 hours.
  - Practice situational awareness; be aware of what is happening in front, behind, and on both sides of your vehicle.
  - Never drive when taking medications that make you drowsy.
  - Delegate navigation and communication to a passenger or pull over.
  - By constantly moving your vision, checking mirrors and distant road conditions, you can avoid highway hypnosis and daydreaming.
  - Avoid eating or drinking while driving.
  - When talking with passengers, keep your eyes on the road and both hands on the steering wheel. Avoid serious or argumentative conversations.
  - Do not be in a hurry, be patient.
  
- Safe driving starts with a safe vehicle. Something as simple as under-inflated tires can have serious consequences. Before operating any vehicle, do a walk-around to look for potential problems, make sure the lights and blinkers work, and adjust your seat and mirrors. If it is the first time you have driven the vehicle, make yourself aware of where everything is.

*Your Smith River Safety Group*

## FINANCE MESSAGE

**Finance Email:** [2023.smithrivercomplex.finance@firenet.gov](mailto:2023.smithrivercomplex.finance@firenet.gov)

**Equipment:** 971-713-1521

**Personnel:** 206-376-7448

**This incident requires electronic documentation.** Please email your time to the Finance email address daily *with the word "NORTH" as the first word in the subject line.* Finance documents required upon check in are:

### Required Documents

Overhead, Agency Crews & Cooperators	Contract Resources
<b>Check-in docs needed:</b> Resource Order, Manifest, Cooperative Agreement, Casual Hire Form w/ECI# (as applicable)	<b>Check-in docs needed:</b> Resource Order, Manifest, Full Contract/Agreement, Certifications ( <i>If required</i> ) Pre-Inspection
<b>Daily:</b> CTRs, Shift Tickets	<b>Daily:</b> CTRs, Shift Tickets, receipts (claims, etc.)
<b>Demob:</b> Signed OF-288; Signed OF-286	<b>Demob:</b> Contractor Evaluations, Shift Tickets, receipt(s) for Addition/Deductions, Post-Inspection, Signed OF-286

Additional Incident Information (to be added to your Shift Ticket or CTR) Incident Name: Smith River Complex North  
Incident Number: CA-SRF-000968

Financial codes:

DOI – QJ6L

USDA – P5QJ6L (0510)

**THANK YOU!!**

## LOGISTICS

LAKE SELMAC ICP	ORDERING
<b>Kitchen Hours:</b> <ul style="list-style-type: none"> <li>• Breakfast 0530-0830</li> <li>• Lunch/Water/Ice @ Refer from 0530-2130</li> <li>• Dinner 1730-2030</li> </ul> <b>Showers:</b> <ul style="list-style-type: none"> <li>• Closed – 1130-1330</li> </ul> <b>Laundry:</b> <ul style="list-style-type: none"> <li>• Open 0500-2145 (24hr turnaround)</li> </ul> <b>Ground Support:</b> Evan Johnson, 541-480-1527 Open 0600-2100 <b>Transportation:</b> Austin Tschida (EQPM) 541-977-7477 <b>Fuel Tender</b> <ul style="list-style-type: none"> <li>• Open 0600-1200</li> <li>• Open 1300-2100</li> </ul> <b>Supply:</b> Open 0600-2200 <b>Line Orders:</b> 206-735-9031  <b>Security Manager:</b> Rico Burgess 541-280-2632	<b>Email Address:</b> 2023.smithrivercomplex.ordering@firenet.gov <b>Subject:</b> Attn North Della (ORDM): 541-915-9650 Brook (ORDM-t): 907-482-0523
	<b>CAVE STAGING</b> (30365 Redwood Hwy (Hwy 199), Cave Junction, OR)
	<b>Fuel Tender:</b> <ul style="list-style-type: none"> <li>• Open 0600-1200</li> <li>• Open 1300-2100</li> </ul> <b>Weed Wash:</b> <ul style="list-style-type: none"> <li>• Open 0700-1900</li> </ul> <b>Mechanic On-site</b>
	<b>HARBOR CAMP</b> (16023 Boat Basin Rd, Harbor, OR)
	<b>Logistics Chief:</b> Paul Kimpling 320-905-0637 <b>Base Camp Manager:</b> Eric Aubert 360-890-8327 <b>Security Manager:</b> Eric Ozog 425-583-3931



## Human Resource Message

### Smith River Complex (North) Sep 24, 2023

#### Stress

Contributing to incident response is something we all decide to do. Being here provides opportunities for learning, adventure, camaraderie, financial benefits, and hard work.

It also includes stress, creates the potential for injury, is full of ambiguity, and is arduous. We all react to stress -- there's no "right" way to respond to stress.

Information on Stress First Aid is available, and by giving some of your time to learn more, you can apply the concepts to your own life and provide real support for your teammates. Please scan the QR code below for more Firefighter Stress Management information -



Stew Souders  
Human Resource Specialist  
360-259-3288  
[stew\\_souders@firenet.gov](mailto:stew_souders@firenet.gov)

.....  
Thought for the Day:

*"It's not the load that breaks you down; it's the way you carry it."* — Lou Holtz (football coach, sports analyst, and author)

.....  
*Incident information on the web – <https://inciweb.nwcg.gov/incident-information/ca-srf-smith-river-complex>*

## **Smith River Complex Demob Process**

### **As your Demob day approaches:**

- Pay attention to the IAP Demob Schedule.
- Alert DMOB if there are issues. We can only fix things we know about.
- **PHONE: 541-414-6539; Email: [2023.smithrivercomplex.demob@firenet.gov](mailto:2023.smithrivercomplex.demob@firenet.gov)**
- NO CELL COVERAGE: See your Division Supervisor
  
- **Contact FINANCE 48 hours prior to give them a heads-up you are departing.**
- **Finance Phones:    Equipment: 971-713-1521                      Personnel: 206-376-7448**
- **Email: [2023.smithrivercomplex.finance@firenet.gov](mailto:2023.smithrivercomplex.finance@firenet.gov)** Turn in any outstanding or travel CTRs/Shift Tickets. Make sure they're SIGNED.
- **Confirm no missing financial documentation. See Finance Page for full information.**

### **Need COMMERCIAL AIR TRAVEL to get home?**

To schedule a flight home you need contact DMOB Frank at [541-414-6539](tel:541-414-6539) at least four (days) prior to your DMOB date!

## **DMOB PROCESS**

### **On your Day of Demob:**

Follow these steps in the order below:

1. **Weed Wash** –All vehicles that have driven off the pavement need to complete a weed wash. Weed wash locations are Rough & Ready Staging or Harbor Camp.
2. **Ground Support** – Contractors must stop-to sign their release inspection. The inspection is optional for agency resources.
3. **Supply** - Return any items you checked out.
4. **Communications** - Return any items you checked out.
5. **Finance** –
  - a. If you are assigned at Lake Selmac, proceed to the Finance yurt to receive your final timesheet or invoice.
  - b. If you are assigned at Harbor Camp, contact Finance on your DMOB day prior to meeting with Planning Section Chief Mike Williams to finalize your timesheet or invoice.
6. **Documentation** –
  - a. If you are assigned at Lake Selmac, drop any documentation in the box at DMOB.
  - b. If you are assigned at Harbor Camp, drop any documentation with the Planning Section Chief.
7. **DMOB Unit** – FINAL STEP: Provide DMOB with your estimated time of departure and arrival home. You are not completely demobed until you inform DMOB
  - a. If you are assigned at Lake Selmac, stop by the DMOB Yurt and tell DMOB Frank.
  - b. If you are assigned at Harbor Camp, call DMOB Frank

To request a remote demob from Smith River South Demob  
call 208-854-9127

Rev. 9/18

09/24/2023

TENTATIVE RELEASE

SMITH RIVER COMPLEX US-CA-SRF-000968

**CREWS**

C-119	0700	(CRW2)	PONDEROSA TIMBERLAND
C-50055	0700	(CRW2)	J.C.OROZCO C-7

**EQUIPMENT**

E-50081	0700	(VUTV)	BOSS OF THE WOODS
E-50217	0700	(SKD1)	PACIFIC RIDGELINE
E-50225	0700	(VUTV)	KIRCHER & SHERMAN LLC
E-50254	0700	(MBM2)	LAP CONTRACTING
E-50277	0700	(WTS2)	ROGUE BASIN
E-50308	0700	(CHP2)	ABRAHAM CONTRACTING
E-50314	0700	(ENG6)	3B'S FORESTRY
E-50316	0700	(ENG3)	ALLIED WATER SERVICE
E-50318	0700	(WTT2)	MOAPA VALLEY FD 73
E-50327	0700	(CHP2)	SAWTOOTH FIREWISE LLC
E-50127	1000	(FUT2)	MUD LAKE OIL INC
E-50169	1000	(GWT2)	ALL AMERICAN EMERGENCY SERVICES -
E-50288	1000	(FUT2)	MUD LAKE OIL

**OVERHEAD**

O-50361	0700	(HEQB)	LEE, LISSEY A
O-50539	0900	(INCM)	BURTON, ROBERT PAUL
O-50355	1200	(HMGB)	KANE, DYLAN T
O-50382	1800	(SEC1)	DAVIS, MATTHEW B

09/23/2023

22:21:09

Revision Date: 12/19/2011

09/25/2023

TENTATIVE RELEASE

SMITH RIVER COMPLEX US-CA-SRF-000968

**EQUIPMENT**

E-232	0700	(MBM2)	WARREN KIRK PARTRIDGE
E-399	0700	(ENG6)	ALLEN FIRE
E-50037	0700	(WTS2)	LAVENBARG -2
E-50148	0700	(ENG6)	CARBON WORKS
E-50149	0700	(ENG4)	COHO FORESTRY
E-50161	0700	(AMB1)	AMBO 4 CLARK COUNTY
E-50244	0730	(AMB2)	EMERGENCY
E-50286	0730	(ENG6)	GE FORESTRY

**OVERHEAD**

O-50106	0700	(READ)	SAUNDERS, ANTHONY JAMES
O-50098	0700	(FMOD)	TOP NOTCH
O-50366	0800	(TFLD)	BIRD, JAMISON DONALD
O-50388	0800	(SEC2)	GARCIA, IGNACIO
O-50391	0800	(HECM)	IMLAY, SANDI
O-50362	1000	(HEQB)	LINDSAY, JAMES A
O-50397	1200	(SOF2)	GREILING, THOMAS E
O-50482	1500	(PSCC)	WILLIAMS, MIKE J
O-50495	1800	(SOFR)	LEUTZINGER, JOSHUA DANIEL

09/23/2023

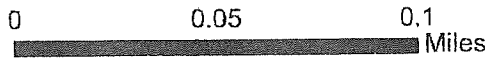
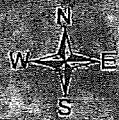
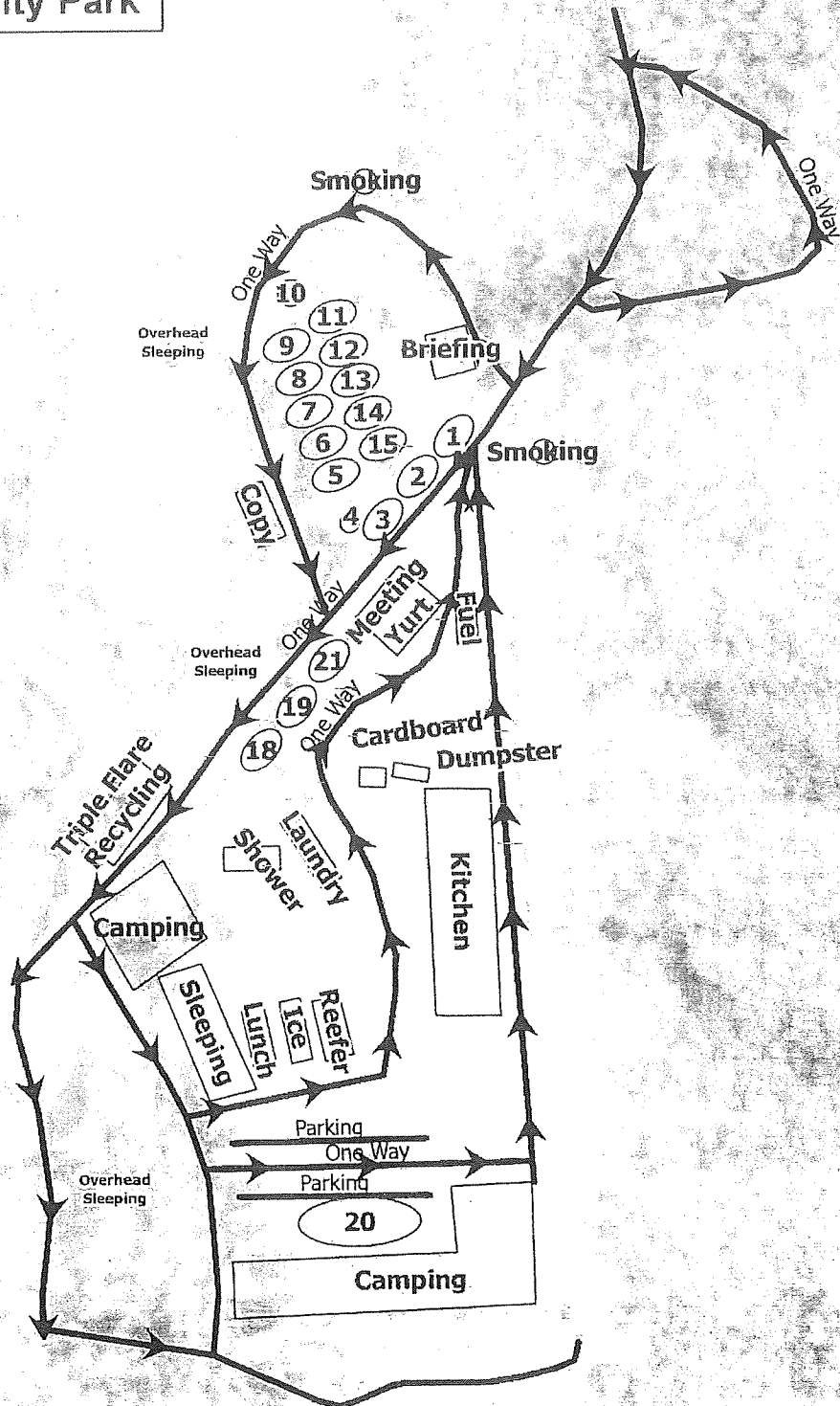
22:21:09

Revision Date: 12/19/2011

# Camp Facilities Map Lake Selmac County Park

Security	1
Communications	2
Medical	3
Ordering	4
Check-in/Docl	5
Plans	6
GIS/Situation	7
READ/Agency Admin.	8
IC/Liason	9
HR	10
Operations/Resources	11
Air Ops	12
FBAN/IMET/AIR	13
PIO	14
Finance	15
Supply	18
Supply	19
Ground Support	20
Logistics/Facilities	21

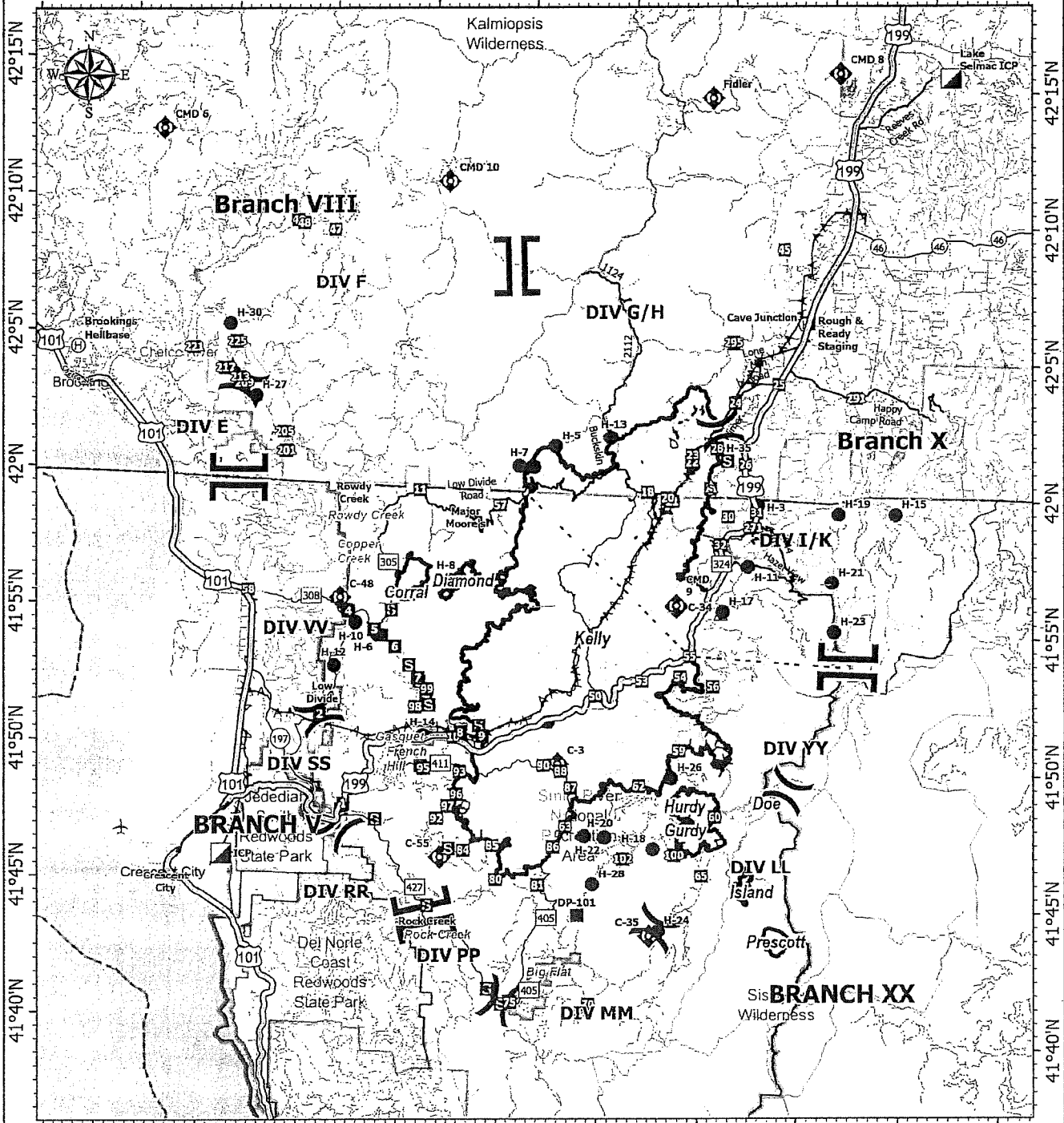
Weed wash located at  
30365 Redwood Hwy Cave  
Junction, OR 97523



42°15.5'N

# TRANSPORTATION

124°20'W 124°15'W 124°10'W 124°5'W 124°W 123°55'W 123°50'W 123°45'W 123°40'W 123°35'W

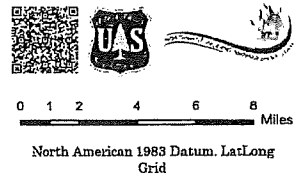


124°15'W 124°10'W 124°5'W 124°W 123°55'W 123°50'W 123°45'W 123°40'W 123°35'W 123°30'W

**Smith River Complex**  
**CA-SRF-000968**  
**9/24/2023**

94,508 acres at 9/22/2023 @ 2004 PDT  
 9/23/2023 0921  
 Acres from NIROPS

- Helispot
- ⊕ Helibase
- ⌘ Division Break
- ⌚ Branch Break
- ⊠ Incident
- ⊡ Command Post
- Drop Point
- ⊠ Staging Area
- ◆ Repeater
- ▲ Safety Zone
- - - Highlighted Feature
- AA Aerial Hazard
- Contained
- ⌚ Uncontained
- Expressway
- ⌚ Secondary Hwy
- Local Connector
- Major Roads
- County Road





## To File Official 2023 Fire Documentation:

TEAMS ->2023\_CASRF\_SmithRiverComplex -> General -> Files ->Draft eDOC Box -> 01\_Draft\_eDoc\_NW8\_20230918\_000968\_3

HINT: NW8 Draft eDoc Box is the RED folder at the top of the page

1. Scroll to your Section and click on it
2. Scroll to your Unit and click on it
3. You will now see all your Unit files
4. Click on your Unit file and it will open for you to drag/upload your document

Things to remember.....

- Use the NWCG Standard Naming Conventions for all your documents
  - ✓ A Section Naming Convention Template is located in each Section Channel
  - ✓ There are no spaces, special characters, dots or dashes in the naming conventions
  - ✓ Dates should be entered as YYYYMMDD (example: 20230918 for September 18, 2023)
  - ✓ Do not use an 'x' at the beginning of your naming conventions (this is used by the DOCL only)
- Use only the folders listed in the Draft eDoc Box (do not add any folders)
- For your 213s and 214s:
  - ✓ Open NW8 Draft eDoc Box
  - ✓ Click on the 8 ICS-213 – ICS-214 folder on the Main folder page
  - ✓ Click on your Section and select either the 213 folder or 214 folder
  - ✓ Click on your Unit and drag/upload the appropriate document with correct naming convention
- For Performance Evaluations:
  - ✓ Open the NW8 Draft eDoc Box
  - ✓ Click on the 9 Performance Evaluations folder on the Main folder page
  - ✓ Click on the appropriate folder to file the evaluation (CREW, EQUIPMENT, OVERHEAD)

PLEASE NOTE: VIPR Contractor Evaluations are forwarded to FINANCE ONLY

If you have ANY questions about your documents, naming conventions or where to file your documents, please contact me so we can get everyone to the right place! If sending an email, please insert NORTH at the beginning of the subject line.

Please let me know if you would like a copy of the file naming conventions for your section/unit.

Chris Rohrbach, Documentation Unit Leader (virtual) 484-358-6258  
[2023.smithrivercomplex.docs@firenet.gov](mailto:2023.smithrivercomplex.docs@firenet.gov)

### 9/24 UPDATE:

Because we share the eDoc Box with the South area, please add the word North *AFTER THE DATE* in all your naming conventions. EXAMPLE: RadTrafLog\_20230924\_North\_000968

If you have multiple documents on the same day, please add the number (1,2,3, etc) between North and the incident number. EXAMPLE: Waybills\_20230924\_North\_1\_000968

# INFORMATION SECTION

Share your photos with the Information Section  
to help us tell your crew's story on Smith River Complex Fire



*THANK YOU to New York State Department of Environmental Conservation T21A fire crew for the successful suppression repair operations on the north end of the Smith River Complex in Gasquet, CA on Tuesday, September 19, 2023. Photo credit: Nick Johnston*

**Ensure your safety while photographing and please show use of proper personal protective equipment.** Stop by the PIO yurt (AirDrop/NFC) or

send your BEST photos to: [2023.SmithRiverComplex@firenet.gov](mailto:2023.SmithRiverComplex@firenet.gov)

**INFO NEEDED:**

Photographer:  
WHO/WHAT is in photo:  
WHEN:  
WHERE:

**EXAMPLE:**

Robin B. Firefighter  
Stanislaus Hot Shots clearing line  
September 6, 2023  
Near Monkey Creek on south end of Division K

**MAIL:** We can send or receive mail for you.

**US Postal Service mailing address:**

Name, Resource Order #  
c/o Smith River Complex Fire – NORTH  
General Delivery  
Selma, OR 97538

**FedEx/UPS mailing address:**

Name, Resource Order #  
c/o Smith River Complex Fire - NORTH  
500 Reeves Creek Road  
Selma, OR 97538









**MESSAGE FOR TRAINEES:** *If you are a trainee, please ensure you have an initiated task book from your home unit and work with your supervisor on the fire to identify tasks you will accomplish. Prior to demobilization, confirm that you have an evaluation record completed at the back of the task book and have a received a personal evaluation. Submit completed taskbooks and evaluations to your home unit training coordinator and/or supervisor. If you have questions, please contact:*

*Shaun Larson, PSC, (541) 350-7675*

*Alex Enna, PSC-T, (541) 410-1691*

## MEDICAL PLAN (ICS 206 WF)

1. Incident/Project Name		Operational Period						
<b>Smith River Complex North</b>		<b>Date/Time: 09/24/23 0700-1900</b>						
2. Medical Aid Stations								
Name	Complete Address	Phone	Advanced Life Support (ALS)					
			YES	NO				
ICP	Selmack Lake ICP	MEDL Watts (541)270-4131 MEDL(t) Read (253)569-2933 AMBO 6 Eyerly (646)574-0705	X					
Cave Helibase	Heibase	Medic 5- Machula (757)822-3771	X					
Harbor Camp	16023 Boat Basin Rd, Harbor, OR	MEDL Poncelet (206)276-5509 AMBO 5 (Nights)	X					
3. Ambulance Services								
Name	Phone	Type of Aircraft & Capability						
AMR (for East Side)	911 (through MEDL, IWI Plan)	ALS and BLS Ground Transport						
CAL/ORE (for West side)	911 (through MEDL, IWI Plan)	ALS and BLS Ground Transport						
Mercy Flight	1-800-903-9000, Press 0	Critical care team of Paramedic & RN, 24 hr, 100x100 LZ						
REACH	1-800-338-4045	Critical care team of Paramedic & RN, 24 hr, 100x100 LZ						
Yellowstone Short Haul	Order through Air Ops (IWI Plan)	ALS, Short Haul, Daytime-Merlin OR						
Coast Guard Humboldt County	Order through Air Ops (IWI Plan)	Hoist and Night Vision						
4. Hospitals								
Name Complete Address	Degrees Decimal Minutes		Travel Time From ICP		Phone	Helipad		Level of Care Facility
	Lat:	Long:	Air	Ground		Yes	No	
Asante 3 Rivers Medical Center 500 SW Ramsey Ave Grants Pass, OR	42° 25.27' N	123° 20.56' W	20 MINS	90 MINS	541-472-7081	X		Level 3 Trauma
	2825 E Barnett Rd Center Medford, OR							
Curry Medical Center 500 5 <sup>th</sup> St. Brookings, OR	N/A	N/A	N/A	15 MINS	Supervisor 541-412-6105		X	Free Standing ER (Stemi/Stroke)
	N/A							
Sutter Coast Hospital 800 E Washington Blvd Crescent City, CA	45° 32.668' N	122° 40.293' W	90 MINS	5 HRS	503-413-4121	X		Level 1 Trauma Burn Center
	2175 Rosaline Ave Redding, CA							
UC Davis Medical Center 4301 X St Sacramento, CA	38° 33.20' N	121° 27.28' W	120 MINS	6 HRS	916-734-3636	X		Level 1 Trauma Burn Center
5. BRANCH/DIVISIONS								
<b>Branch VII DIV E</b>	<b>EMS Responders &amp; Capabilities:</b>		<b>Medic 24-Weig 605-545-5866</b>					
	<b>Equipment Available on Scene:</b>		ALS, AED, O2					
	<b>Medical Emergency Channel:</b>		Command					
	<b>Air Ambulance ETA to Scene:</b>		70 Mins					
	<b>Ground Ambulance ETA to Scene:</b>		30 Mins					
	<b>Approved Helispot:</b>		H-27 42° 02.907' N 124° 08.434' W			H-30 42° 05.51' N 124° 09.92' W		
<b>Branch VIII DIV F</b>	<b>EMS Responders &amp; Capabilities:</b>		<b>Medic 6-Yuan 510-402-3022, AMBO 5-Baker 205-389-7064</b>					
	<b>Equipment Available on Scene:</b>		ALS, AED, O2, UTV, SKED					
	<b>Medical Emergency Channel:</b>		Command					
	<b>Air Ambulance ETA to Scene:</b>		70 Mins					
	<b>Ground Ambulance ETA to Scene:</b>		20 Mins					
	<b>Approved Helispot:</b>		H-27 42° 02.907' N 124° 08.434' W			H-30 42° 05.51' N 124° 09.92' W		

### MEDICAL PLAN (ICS 206 WF)

<b>Branch X DIV G/H</b>	EMS Responders & Capabilities:		REMS 1-Blaul 949-577-2663				
	Equipment Available on Scene:		ALS, AED, O2, UTV, SKED				
	Medical Emergency Channel:		Command				
	Air Ambulance ETA to Scene:		30-60 Mins				
	Ground Ambulance ETA to Scene:		40 Mins				
	Approved Helispot:		H-5 42° 01.470' N 123° 53.299' W	H-7 42° 00.692' N 123° 55.056' W	H-13 42° 01.867' N 123° 50.567' W	H-25 42° 00.678' N 123° 54.330' W	
<b>Branch X DIV I/K</b>	EMS Responders & Capabilities:		EMT 1-Luker 425-350-3377, EMT 3-Wilson 509-860-0114 AMBO 3-Cook 956-382-4168, AMBO 4- Kotov 360-991-1332				
	Equipment Available On Scene:		ALD, AED, O2, SKED				
	Medical Emergency Channel:		Command				
	Air Ambulance ETA to Scene:		30-60 Mins				
	Ground Ambulance ETA to Scene:		15 Mins				
	Approved Helispot:		H-3 41° 59.577' N 123° 43.053' W				
<b>Branch X Suppression/ Repair</b>	EMS Responders & Capabilities:		REMS 2- Studebaker 541-218-0368				
	Equipment Available on Scene:		ALS, AED, O2, UTV, SKED				
	Medical Emergency Channel:		Command				
	Air Ambulance ETA to Scene:		30-60 Mins				
	Ground Ambulance ETA to Scene:		15-20 Mins				
	Approved Helispots:		H-1 41° 59.635' N 123° 47.356' W	H-11 41° 57.323' N 123° 43.435' W	H-21 41° 56.770' N 123° 39.209' W		
6. Prepared by (Medical Unit Leader)		Date:		7. Reviewed By (Safety Officer)		Date:	
Chloe Read MEDL(t) <i>Chloe Read</i>		09/23/23		Jeff Bishop SOFR <i>Jeff Bishop</i>		<i>SOFR</i>	

# MEDICAL PLAN (ICS 206 WF)

Controlled Unclassified Information//Basic

Medical Incident Report																													
<p>FOR A NON-EMERGENCY INCIDENT, WORK THROUGH CHAIN OF COMMAND TO REPORT AND TRANSPORT INJURED PERSONNEL AS NECESSARY.</p> <p>FOR A MEDICAL EMERGENCY: IDENTIFY ON SCENE INCIDENT COMMANDER BY NAME AND POSITION AND ANNOUNCE "MEDICAL EMERGENCY" TO INITIATE RESPONSE FROM IMT COMMUNICATIONS/DISPATCH.</p>																													
<p>Use the following items to communicate situation to communications/dispatch.</p>																													
<p><b>1. CONTACT COMMUNICATIONS / DISPATCH</b> (Verify correct frequency prior to starting report)  <i>Ex: "Communications, Div. Alpha. Stand-by for Emergency Traffic."</i></p> <p><b>2. INCIDENT STATUS:</b> Provide incident summary (including number of patients) and command structure.  <i>Ex: "Communications, I have a Red priority patient, unconscious, struck by a falling tree. Requesting air ambulance to Forest Road 1 at (Lat./Long.) This will be the Trout Meadow Medical, IC is TFLD Jones. EMT Smith is providing medical care."</i></p>																													
Severity of Emergency / Transport Priority	<input type="checkbox"/> <b>RED / PRIORITY 1</b> Life or limb threatening injury or illness. Evacuation need is <b>IMMEDIATE</b> <i>Ex: Unconscious, difficulty breathing, bleeding severely, 2<sup>o</sup> - 3<sup>o</sup> burns more than 4 palm sizes, heat stroke, disoriented.</i> <input type="checkbox"/> <b>YELLOW / PRIORITY 2</b> Serious Injury or illness. Evacuation may be <b>DELAYED</b> if necessary. <i>Ex: Significant trauma, unable to-walk, 2<sup>o</sup> - 3<sup>o</sup> burns not more than 1-3 palm sizes.</i> <input type="checkbox"/> <b>GREEN / PRIORITY 3</b> Minor Injury or illness. Non-Emergency transport <i>Ex: Sprains, strains, minor heat-related illness.</i>																												
Nature of Injury or Illness & Mechanism of Injury			<i>Brief Summary of Injury or Illness                  (Ex: Unconscious, Struck by Falling Tree)</i>																										
Transport Request			<i>Air Ambulance / Short Haul/Hoist                  Ground Ambulance / Other</i>																										
Patient Location	<i>Descriptive Location &amp; Lat. / Long. (WGS84)</i>																												
Incident Name	<i>Geographic Name + "Medical"                  (Ex: Trout Meadow Medical)</i>																												
On-Scene Incident Commander	<i>Name of on-scene IC of Incident within an Incident (Ex: TFLD Jones)</i>																												
Patient Care	<i>Name of Care Provider                  (Ex: EMT Smith)</i>																												
<p><b>3. INITIAL PATIENT ASSESSMENT:</b> Complete this section for each patient as applicable (start with the most severe patient)</p> <p>Patient Assessment: See IRPG page 106</p> <p>Treatment:</p>																													
<p><b>4. TRANSPORT PLAN:</b></p> <p>Evacuation Location (if different): (Descriptive Location (drop point, intersection, etc.) or Lat. / Long.) Patient's ETA to Evacuation Location:</p> <p>Helispot / Extraction Site Size and Hazards:</p>																													
<p><b>5. ADDITIONAL RESOURCES / EQUIPMENT NEEDS:</b></p> <p><i>Example: Paramedic/EMT, Crews, Immobilization Devices, AED, Oxygen, Trauma Bag, IV/Fluid(s), Splints, Rope rescue, Wheeled litter, HAZMAT, Extrication</i></p>																													
<p><b>6. COMMUNICATIONS: Identify State Air/Ground EMS Frequencies and Hospital Contacts as applicable</b></p> <table border="1" style="width: 100%; border-collapse: collapse;"> <thead> <tr> <th style="width: 15%;">Function</th> <th style="width: 20%;">Channel Name/Number</th> <th style="width: 15%;">Receive (RX)</th> <th style="width: 15%;">Tone/NAC *</th> <th style="width: 15%;">Transmit (TX)</th> <th style="width: 20%;">Tone/NAC *</th> </tr> </thead> <tbody> <tr> <td>COMMAND</td> <td></td> <td></td> <td></td> <td></td> <td></td> </tr> <tr> <td>AIR-TO-GRND</td> <td></td> <td></td> <td></td> <td></td> <td></td> </tr> <tr> <td>TACTICAL</td> <td></td> <td></td> <td></td> <td></td> <td></td> </tr> </tbody> </table>						Function	Channel Name/Number	Receive (RX)	Tone/NAC *	Transmit (TX)	Tone/NAC *	COMMAND						AIR-TO-GRND						TACTICAL					
Function	Channel Name/Number	Receive (RX)	Tone/NAC *	Transmit (TX)	Tone/NAC *																								
COMMAND																													
AIR-TO-GRND																													
TACTICAL																													
<p><b>7. CONTINGENCY: Considerations:</b> If primary options fail, what actions can be implemented in conjunction with primary evacuation method? Be thinking ahead.</p>																													
<p><b>8. ADDITIONAL INFORMATION:</b> Updates/Changes, etc.</p>																													
<p><b>REMEMBER:</b> Confirm ETA's of resources ordered. Act according to your level of training. Be Alert. Keep Calm. Think Clearly. Act Decisively.</p>																													