

INCIDENT ACTION PLAN SMITH RIVER COMPLEX SOUTH INCIDENT

CA-SRF-000968

Wednesday



OPERATIONAL PERIOD

9/27/2023 0700

to

9/28/2023 0700



INTENTIONALLY LEFT BLANK



Fire Weather Forecast



FORECAST NO: 41
PREDICTION FOR: Wednesday-Thursday
DATE: September 27th 2023
FORECAST ISSUED: 1900 September 26th, 2023

FIRE: Smith River Complex South
UNIT: CA-SRF-968
IMET: steven.vanhorn@noaa.gov (240-778-5285)
SIGNED: *Steven Van Horn*

WEATHER DISCUSSION: * Valley elevations = 400-1200ft (Gasquet), Ridgetop elevations = 3500 ft (Camp Six) *
 A frontal band will bring rain over the area early this morning before tapering off by 1000 PDT. Low clouds will break up in the afternoon with partly sunny conditions this afternoon. Winds will be light from the northwest. Clear skies tonight will result in strong radiational cooling with fog developing in the valleys into Thursday morning. Thursday will also see a break between weather systems.

TODAY:

WEATHER: Cloudy in the morning then partly sunny in the afternoon. Rain tapering off between 0800-1000 PDT.
MAX TEMP: Valleys: 61-65°F (little change) **MIN RH:** Valleys: 55-60% (little change)
 Ridgetops: 56-60°F (little change) **Ridgetops:** 59-68% (little change)
CHC WTG RAIN: 70% **LAL:** 1 **SFC VIS:** 5 miles in the morning then 6+ miles by 1100.

WINDS: Valleys: Northwest 3-7 mph.
 (20 feet) Ridgetops: Northwest 5-9 mph.

MIXING HEIGHT: Rising to 3,500 ft MSL by 1400 PDT. **TRANSPORT WIND:** West-Northwest around 7 mph.

TONIGHT:

WEATHER: Mostly clear. Fog developing overnight.
MIN TEMP: Valleys: 42-46° (3-5 ↓) **MAX RH:** Valleys: 92-98% (little change)
 Ridgetops: 46-50° (1-3 ↓) **Ridgetops:** 80-90% (10-15 ↓)
CHC WTG RAIN: 0% **LAL:** 1 **SFC VIS:** 1-2 miles.

WINDS: Valleys: Downslope/Downvalley 1-3 mph.
 (20 feet) Ridgetops: North-Northwest 6-10 mph in the evening becoming north-northeast after 2200 PDT.

INVERSION: Inversion height near surface after 2100 PDT. **TRANSPORT WIND:** North around 5 mph.

THURSDAY:

WEATHER: Fog in the morning then mostly sunny in the afternoon.
MAX TEMP: Valleys: 66-70°F (3-6 ↑) **MIN RH:** Valleys: 48-55% (6-8 ↓)
 Ridgetops: 61-65°F (3-6 ↑) **Ridgetops:** 55-63% (5-7 ↓)
CHC WTG RAIN: 0% **LAL:** 1 **SFC VIS:** 2 miles in the morning increasing to 6+ miles.

WINDS: Valleys: Northwest 3-7 mph.
 (20 feet) Ridgetops: North-Northeast 6-10 mph in the morning becoming northwest in the afternoon.

MIXING HEIGHT: Rising to 4,000 ft MSL by 1300 PDT. **TRANSPORT WIND:** North around 8 mph.

EXTENDED OUTLOOK: Another weather system will move through on Friday bringing a shot of more rain and keep temperatures below normal. Wetting rains of between 0.25 to 0.50 inches will be possible. Confidence is increasing for breezy northeast winds over the weekend, which will also bring warmer and drier conditions.

Nearby Weather Observations →



Fire Behavior Forecast #41

Name of Incidents: Smith River Complex – South Zone	Administrative Unit: Six Rivers NF – Gasquet District
Date & Time Issued: 26 September 2023 - 2000	Operational Period: September 27 (0700-1900)
Weather Summary: Scattered showers Wednesday, cool and dry Thursday, Chance of rain Friday. A drier pattern is forecasted to set up over the weekend.	FBAN: 530-412-2333- cell Linda Ferguson FBAN trainee

Fire Behavior Summary

General – Max. spot dist.: 24 ch. or (0.3 mile) Prob. Ignition: 16% - shaded 30% - unshaded LAL: 1 CWR 70%	FUEL MODEL	Back [ROS] Head		Back [FL] Head	
	GS2: Burn scars with moderate dead/down, grass, manzanita brush	0.6 ch/hr	8 ch/hr	0.7'	2.2'
	TU5: Very high load mixed conifer and shrubs – heavy forest litter, deep duff, heavy dead/down fuels	0.4 ch/hr	6 ch/hr	1.6'	6'
	TL3/8: Long-needle pine litter, Gambel oak and sparse grass	0.1 ch/hr	1 ch/hr	0.2'	0.8'

Today's General Fire Behavior:

Dead and down fuels are quite damp after the rain. Minimal fire behavior is expected. Smoldering will still take place in duff layers, root systems, stump holes and areas that were shaded from the rain such as tree wells.

Specifics:

Branch V:
Division RR: Minimal fire behavior, interior smoldering.
Division SS/VV: Minimal fire behavior, interior smoldering.

Branch XX:
Division LL: Minimal fire behavior, interior smoldering.
Division MM/PP: Minimal fire behavior, interior smoldering on PP. No fire behavior expected on MM.
Division YY: Minimal fire behavior, interior smoldering.

Initial Attack and Emergency Response: Be aware of secondary fire effects such as fire weakened trees, unstable root systems, soft shoulders, and falling rocks in steep canyons.

Secondary Fire Effects Fire Effects/Watchouts

Widespread precipitation and moisture will serve as an insulator to stump holes and ash pits. The precipitation will only penetrate the top layer of the ash turning it from white to black. This will give the appearance that the area is cold. However, the top dark layer will hide areas of white ash underneath, which will remain hot. Use appropriate precautions when walking or mopping up.

Safety Message

Risks to fireline personnel increase significantly during transfer of command periods regardless of the size or complexity of the incident. Incoming resources have not had the opportunity to familiarize themselves with the fire environment you have experienced and adapted to. Be intentional about sharing what you have learned about the fire behavior in your area with incoming resources.

Smith River Complex South – Safety Message

INCIDENT #CA-SRF-000968

DATE: 09/27/23 TIME: 0700-1900 Day Shift

Incident Management Team Transition

- Sometimes called the 19th Watch Out Situation
- Take the time to understand the plan. Ensure all resources completely understand the assignment, Communications, and Medical Plan.
- Supervisory positions have changed. Know who you are working for.
- Briefings: Required every shift for all personnel, for new assignments, and for changing conditions.

Any Firefighter knows how Every firefighter should know why

Make a Safety Difference

- As a supervisor, provide constant and relentless oversight.
- ***Stay focused on the task at hand all the time!***
- Come up with a safer way to perform a risky assignment.
- Discuss situations that might cause a near miss.
- Never tolerate “Hey, watch this!”
- Discuss the effects of fatigue and how to mitigate the effects of fatigue.
- While in the fire zone, wear your hard hat when you leave the vehicle.
Have a purpose in what you do.

Ensure....

- Strategic and tactical decisions take into account extended duration firefighting efforts with massive destruction.
- Tactical decisions keep pace with the evolving fire conditions and behavior.
- Firefighting operations are coordinated with adjacent branches, divisions, and groups.
- Specific firefighting tasks are consistent with the strategy and tactics to control the incident.
- We avoid the arrogance of success or, think what we did yesterday will be sufficient for tomorrow.

Prepared by:



Team 12 Safety Group



INCIDENT RISK ANALYSIS

ICS (215A) DAY SHIFT

BR/DV	HAZARDOUS ACTIONS – CONDITIONS	MITIGATIONS – WARNINGS – REMEDIES
ALL	WEATHER / THUNDERSTORM SAFETY	<ul style="list-style-type: none"> • Take weather throughout the shift to get timely and accurate information. • Is what we predicted what you are observing? • Request spot weather forecasts if you notice a notable change in the weather. • Communicate any changes in weather with your crew and adjacent resources. • Take shelter in a vehicle or building if possible. • If outdoors, find a low spot away from tall trees. If in the woods, move to an area with shorter trees. • If in open country, crouch low with feet together and minimize contact with the ground. • Don't stay on ridge tops or in wide open areas. • Follow Thunderstorm Safety in your IRPG (pg. 17).
ALL	TRAFFIC HAZARDS AND DRIVING	<ul style="list-style-type: none"> • Take extra precautions when entering or exiting the roadways. • Maintain high visibility when in the operational area and use warning lights when working on roads or traveling in smoke. • Many roads are narrow and mid-slope, with soft shoulders. Allow heavy vehicles to pass on the uphill side. Use spotters when backing or turning around. • Keep your speed down in all areas. Drive at or below posted speed limits. • Use warning lights when working on roads or traveling in smoke. • Use chock blocks and turn wheels into hills.
ALL	COLD STRESS	<ul style="list-style-type: none"> • Keep extra clothing handy if you get wet and need to change. • Drink warm, sweetened fluids. • Avoid touching cold metal or wet surfaces with bare skin. • Use proper engineering controls, safe work practices, and protective equipment.
ALL	DEBRIS FLOW / MUDSLIDES	<ul style="list-style-type: none"> • Never underestimate a debris flow or mudslide. • Pay attention to weather forecasts for the burn area. • Know the warning signs (listen and watch for rushing water, mud, unusual sounds). • Have an evacuation/escape route planned that is least likely to be impacted by flash flooding.
ALL	STEEP TERRAIN & ROLLING DEBRIS	<ul style="list-style-type: none"> • Maintain 8'-10' spacing when working & walking. • Do not work above any personnel. • Evaluate the necessity to send personnel into areas with limited access.
ALL	HAZARD / DANGER TREES	<ul style="list-style-type: none"> • Follow Hazard Tree Safety Guidelines (IRPG p.22.) • Limit the number of personnel around snags and their exposure time. • Fallers must be qualified for the trees being felled. • Be alert around hazard trees during wind events, even green trees. • The hazard zone extends a minimum of 2½ tree lengths. • Avoid parking vehicles or taking breaks under or near hazard trees.
ALL	FATIGUE AND COMPLACENCY	<ul style="list-style-type: none"> • Be alert, and monitor all resources for signs of fatigue, and take breaks as necessary. • Maintain a 2:1 Work to rest ratio. • Repeated assignments in the same area can lead to complacency, making personnel more vulnerable to accidents. • Take steps to maintain situational awareness for the duration of the incident. • Take tactical pauses as practical and feasible.
ALL	HEAVY EQUIPMENT OPERATIONS	<ul style="list-style-type: none"> • Ensure communications are established with operators. • Use hand signals if other communications are unavailable. • Maintain a 50'-100' exclusion area around equipment. • Use road guards as needed to control traffic.
ALL	MENTAL WELL-BEING	<ul style="list-style-type: none"> • Prioritize sleep and eat a healthy diet. • Include your family and friends. Call home and initiate social connections. • Monitor resources and engage in healthy activities. • Focus on positivity and engage in self-care.
ALL	MOP-UP	<ul style="list-style-type: none"> • Balance the risk of exposure to hazards against the mop-up objective. • Evaluate areas for hazard trees and locate stump holes for avoidance. • Monitor fatigue; shorten shifts to increase rest where appropriate. • Review and follow "Look Up, Look Down, Look Around" procedures. • Evaluate mop-up distances against what is safe and necessary.

INCIDENT NAME:

**SMITH RIVER COMPLEX
SOUTH**

OPERATIONAL PERIOD: 0700 – 1900

SEPTEMBER 27, 2023

Date/Time Prepared: 09/26/2023 – 1500



ASSIGNMENT LIST (ICS 204 WF)

CONTROLLED UNCLASSIFIED
INFORMATION//BASIC

1. Incident Name: SMITH RIVER COMPLEX SOUTH	2. Operational Period: Date From: 09/27/23 Date To: 09/28/23 Time From: 0700 Time To: 0700	3. Branch Division V RR/SS/VV
4. Operations Personnel:		Page 1 of 1

Operations Section Chief: John Owings	Night Ops:
Branch Director: Rob Szczepanek	Branch Safety:
Division/Group Supervisor: Andres Luna/Steve Rushing(T)	Air Attack:

5. Resources Assigned:	** Resources Below in Bold are 12 Hour **						
Resource Identifier	ALS	LWD	Leader	Personnel	Request #	Hours	Reporting Location
CRW1 ALPINE IHC		9/30	CHAMP, JAMES	21	C-132	0700-1900	GASQUET CAMP
ENG3 STF 343		10/2	GREEN, PAT	5	E-648	0700-1900	GASQUET CAMP
ENG3 CNF E330		9/30	HESS, PRAWIT	3	E-671	0700-1900	GASQUET CAMP
ENG3 INF 341		10/1	BAILEY, TORRE	5	E-672	0700-1900	GASQUET CAMP
ENG3 STF 342		10/2	FRANKLIN, JUSTIN	5	E-690	0700-1900	GASQUET CAMP
ENG3 SABINO FIRE		10/2	EELEY, TONY	3	E-688	0700-1900	GASQUET CAMP
WTT2 MOAPA VALLEY		10/2	TRIGG, KELCEY	1	E-676	0700-1900	GASQUET CAMP
WTS1 OILER 341		10/2	HEMSTED, GARY	1	E-341	0700-1900	GASQUET CAMP
TFLD(T) RHODES		9/30	RHODES, MARK	1	E-671.1	0700-1900	GASQUET CAMP
RAM REMS	X	9/29	KLASSEN, DANIEL	4	E-309	0700-1900	GASQUET CAMP
ROUGH COUNTRY UTV2	X	10/1	ZIEGMAN, AARON	2	E-543	0700-1900	GASQUET CAMP
EMPF HOESE	X	9/27	HOESE, MICHAEL	1	O-701	0700-1900	GASQUET CAMP
EMTF FARRER		9/27	FARRER, JOBEE	1	O-890	0700-1900	GASQUET CAMP
AMBO 3	X	9/28	DEBOCK, DREW	2	E-91	0700-1900	GASQUET CAMP
SOFR FARMER		9/29	FARMER, JAMES	1	O-936	0700-1900	GASQUET CAMP
SOFR(T) LEIGH-ANNE ORR		10/1	ORR, LEIGH-ANNE	1	O-955	0700-1900	GASQUET CAMP

6. Work Assignments:
 Patrol and mop up to the extent necessary from DP9-DP80.
 Identify hazard trees along 17N40 road, dozer lines, and hand lines to implement mitigation measures.
 Patrol along Hwy 199 and respond to service calls for smoke reports and mop up to the extent necessary.
 Patrol and mop up handline from the 17N40 road to Craigs Creek.

7. Special Instructions:
 REAFs need to check in and out with DIVS.
 Backhaul trash and excess supplies to Gasquet and update Field Maps from any removed accountable property.
 Be strategically and tactically prepared to alter and enhance changing environmental conditions.
 Ensure escape routes to staging areas or safety zones will not be compromised by mud slides or debris flows.

8. Communications

Name	Ch	Function	Rx Freq	Rx Tone	Tx Freq	Tx Tone	Mode	Notes
NIFC C55	5	COMMAND	173.8375	(T3) 131.8	165.5125	(T3) 131.8	A	RC DIP all rpt. linked to ICP
NIFC T5	9	TACTICAL	166.7750	(T3) 131.8	166.7750	(T3) 131.8	A	
A/G CMD	13	A/G CMD	173.8500	0.0	173.8500	0.0	A	
CALCORD	15	TACTICAL	156.0750	(T6) 156.7	156.0750	(T6) 156.7	A	EMS AIR COORDINATOR
AIRGUARD	16	AIRGUARD	168.6250	0.0	168.6250	(T1) 110.9	A	EMERGENCY USE ONLY

9. Prepared by: Name: Mike Yeun RESL

Signature:

ICS 204 Date/Time: 9/26/2023 2200 Personnel Count: 57

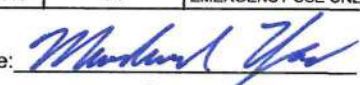
ASSIGNMENT LIST (ICS 204 WF)

CONTROLLED UNCLASSIFIED
INFORMATION//BASIC

1. Incident Name:			2. Operational Period:				3. Branch		Division	
SMITH RIVER COMPLEX SOUTH			Date From: 09/27/23		Date To: 09/28/23		V		Gasquet Repair	
			Time From: 0700		Time To: 0700					
4. Operations Personnel:								Page 1 of 2		
Operations Section Chief: John Owings					Night Ops:					
Branch Director: Rob Szczepanek					Branch Safety:					
Division/Group Supervisor: Ryan Aeby					Air Attack:					
5. Resources Assigned:			** Resources Below in Bold are 12 Hour **							
Resource Identifier	ALS	LWD	Leader	Personnel	Request #	Hours	Reporting Location			
CRW2IA FIRESTORM		10/2	SPRAGUE, CHRIS	18	C-129	0700-1900	GASQUET CAMP			
CRW2IA NAVAJO SCOUTS 1		10/1	BILLIE, BRIAN	20	C-130	0700-1900	GASQUET CAMP			
ENG6 RX FIRE		10/3	GLICK, JONAS	3	E-152	0700-1900	GASQUET CAMP			
ENG6 MIS E2261		10/3	KLETTE, RYAN	3	E-691	0700-1900	GASQUET CAMP			
WTS2 DARRAH 705		10/4	WATERMAN, TIM	1	E-705	0700-1900	GASQUET CAMP			
DOZ2 JUNGWORTH 171		9/30	BROWN, PETER	2	E-171	0700-1900	GASQUET CAMP			
DOZ2 SMOKY MOUNTAIN		9/29	TOMLINSON, BRIGGS	2	E-173	0700-1900	GASQUET CAMP			
EXCA2 LONESTAR		10/6	JOHNSON, CHRISTIAN	2	E-299	0700-1900	GASQUET CAMP			
EXCA2 SMOKY MOUNTAIN		9/27	TOMLINSON, IKE	2	E-301	0700-1900	GASQUET CAMP			
EXCA2 DARRAH		10/4	KINDLEY, COLE	2	E-702	0700-1900	GASQUET CAMP			
CHIP2 CECIL LOG 434		10/1	MCDONALD, PATRICK	3	E-434	0700-1900	GASQUET CAMP			
TFLD NITTMAN		9/27	NITTMAN, BRYOR	1	O-710	0700-1900	GASQUET CAMP			
TFLD BRONK		10/7	BRONK, JOEL	1	O-1051	0700-1900	GASQUET CAMP			
TFLD(T) ITHURBURN		10/8	ITHURBURN, PAUL	1	O-1068	0700-1900	GASQUET CAMP			
NORTH COUNTY REMS		9/30	JONES, EDDIE	4	O-114	0700-1900	GASQUET CAMP			
EMPF AUBERT	X	9/28	AUBERT, GABE	1	O-888	0700-1900	GASQUET CAMP			
EMTF MCKINLEY		9/28	MCKINLEY, LANCE	1	O-894	0700-1900	GASQUET CAMP			
SOFR MARTINO		9/28	MARTINO, NICHOLAS	1	O-935	0700-1900	GASQUET CAMP			
6. Work Assignments:										
Continue suppression repair with implemented repair plan.										
7. Special Instructions:										
REAFs need to check in and out with DIVS.										
Backhaul trash and excess supplies to Gasquet and update Field Maps from any removed accountable property.										
Be strategically and tactically prepared to alter and enhance changing environmental conditions.										
Ensure escape routes to staging areas or safety zones will not be compromised by mud slides or debris flows.										
8. Communications										
Name	Ch	Function	Rx Freq	Rx Tone	Tx Freq	Tx Tone	Mode	Notes		
NIFC C3	1	COMMAND	170.4250	(T3) 131.8	168.0750	(T3) 131.8	A	CAMP 6 all rpt. linked to ICP		
NIFC T6	10	TACTICAL	168.2500	(T3) 131.8	168.2500	(T3) 131.8	A			
A/G CMD	13	A/G CMD	173.8500	0.0	173.8500	0.0	A			
CALCORD	15	TACTICAL	156.0750	(T6) 156.7	156.0750	(T6) 156.7	A	EMS AIR COORDINATOR		
AIRGUARD	16	AIRGUARD	168.6250	0.0	168.6250	(T1) 110.9	A	EMERGENCY USE ONLY		
9. Prepared by: Name:			Mike Yeun				RESL			
							Signature:			
ICS 204			Date/Time: 9/26/2023 2200				Personnel Count: 68			

ASSIGNMENT LIST (ICS 204 WF)

CONTROLLED UNCLASSIFIED
INFORMATION//BASIC

1. Incident Name: SMITH RIVER COMPLEX SOUTH		2. Operational Period: Date From: 09/27/23 Date To: 09/28/23 Time From: 0700 Time To: 0700				3. Branch V		Division Smith Repair	
4. Operations Personnel:						Page 1 of 2			
Operations Section Chief: John Owings					Night Ops:				
Branch Director: Rob Szczepanek					Branch Safety:				
Division/Group Supervisor: Anna Wright					Air Attack:				
5. Resources Assigned:		** Resources Below in Bold are 12 Hour **							
Resource Identifier	ALS	LWD	Leader	Personnel	Request #	Hours	Reporting Location		
WTS2 DARRAH 706		10/4	KINCAID, RICK	1	E-706	0700-1900	GASQUET CAMP		
DOZ2 LEESVILLE 293		10/3	RUBINI, NATE	2	E-293	0700-1900	GASQUET CAMP		
SENNEBOGEN		9/27	WEST, TODD	2	S-933	0700-1900	GASQUET CAMP		
FEL1 PONSEE MILLER TIMBER*		9/29	BERNAL, SERGIO	2	E-50083	0700-1900	GASQUET CAMP		
FEL1 AXSUS ENTERPRISES*		10/1	RIECKERS, DUSTY	2	E-50084	0700-1900	GASQUET CAMP		
FEL2 AXSUS ENTERPRISES*		10/2	JAGER, ANDREW	2	E-50063	0700-1900	GASQUET CAMP		
CHIP2 ADKINS		10/3	ADKINS, RONALD	3	E-698	0700-1900	GASQUET CAMP		
CHIP2 SISKIYOU		10/3	LANGE, DENNIS	3	E-699	0700-1900	GASQUET CAMP		
GRD DARRAH			KEITH DARRAH	1	E-727	0700-1900	GASQUET CAMP		
TFLD GUNDLE		9/28	GUNDLE, COLIN	1	O-868	0700-1900	GASQUET CAMP		
TFLD HERRERA		10/4	HERRERA, GREG	1	O-956	0700-1900	GASQUET CAMP		
TFLD(T) VANCE		10/1	VANCE, JEREMY	1	O-972	0700-1900	GASQUET CAMP		
FMOD TAYLOR TIMBER		10/4	TAYLOR, CHRIS	2	O-155	0700-1900	GASQUET CAMP		
FMOD MOEN FALLERS		9/28	MOEN, ANDREW	2	O-116	0700-1900	GASQUET CAMP		
FMOD CHARLIE FALLERS 154		10/3	KECK, DAN	2	O-154	0700-1900	GASQUET CAMP		
FMOD PAC RIDGELINE 156		10/5	ADAMS, ERINE	2	O-156	0700-1900	GASQUET CAMP		
FMOD REDWOOD EMPIRE		10/3	ROJAS, TIRSO	2	O-157	0700-1900	GASQUET CAMP		
BLACKWOODS REMS 4		9/29	BOYD, WILLIAM	4	E-310	0700-1900	GASQUET CAMP		
ROUGH COUNTRY UTV3	X	10/1	DOUVILLE, ROB	2	E-542	0700-1900	GASQUET CAMP		
AMBO 2	X	9/26	PRITCHET, REID	2	E-92	0700-1900	GASQUET CAMP		
6. Work Assignments: Continue suppression repair with implemented repair plan.									
7. Special Instructions: *North resources will have shift tickets signed by Smith River South Ops, but will submit them virtually to North Finance. REAFs need to check in and out with DIVS. Backhaul trash and excess supplies to Gasquet and update Field Maps from any removed accountable property. Be strategically and tactically prepared to alter and enhance changing environmental conditions. Ensure escape routes to staging areas or safety zones will not be compromised by mud slides or debris flows.									
8. Communications									
Name	Ch	Function	Rx Freq	Rx Tone	Tx Freq	Tx Tone	Mode	Notes	
NIFC C55	5	COMMAND	173.8375	(T3) 131.8	165.5125	(T3) 131.8	A	RC DIP all rpt. linked to ICP	
NIFC T3	7	TACTICAL	168.6000	(T3) 131.8	168.6000	(T3) 131.8	A		
A/G CMD	13	A/G CMD	173.8500	0.0	173.8500	0.0	A		
CALCORD	15	TACTICAL	156.0750	(T6) 156.7	156.0750	(T6) 156.7	A	EMS AIR COORDINATOR	
AIRGUARD	16	AIRGUARD	168.6250	0.0	168.6250	(T1) 110.9	A	EMERGENCY USE ONLY	
9. Prepared by: Name:		Mike Yeun			RESL				
					Signature: 				
ICS 204		Date/Time: 9/26/2023 2200			Personnel Count: 35				

ASSIGNMENT LIST (ICS 204 WF)

CONTROLLED UNCLASSIFIED
INFORMATION/BASIC

1. Incident Name: SMITH RIVER COMPLEX SOUTH	2. Operational Period: Date From: 09/27/23 Date To: 09/28/23 Time From: 0700 Time To: 0700	3. Branch Division XX LL/YY
--	---	--

4. Operations Personnel: Page 1 of 2

Operations Section Chief: John Owings	Night Ops:
Branch Director: Joe Tieso	Branch Safety:
Division/Group Supervisor: Ken Van Wig/Jack Reimers(T) /Ranbir Lally(T)	Air Attack:

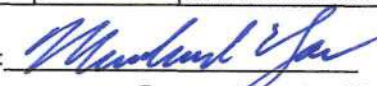
5. Resources Assigned:	** Resources Below in Bold are 12 Hour **						
Resource Identifier	ALS	LWD	Leader	Personnel	Request #	Hours	Reporting Location
CRW1 DIAMOND MT. IHC		9/28	DOBYNS, DAN	20	C-127	0700-1900	GASQUET CAMP
CRW1 SHASTA LAKE IHC		9/29	BOGDAN, JOSEPH	22	C-128	0700-1900	GASQUET CAMP
ENG3 TNF 331		9/30	PRATSCNER, KAI	5	E-670	0700-1900	GASQUET CAMP
ENG3 SUNDANCE FIRE		10/2	CAMPASANO, MICHAEL	3	E-689	0700-1900	GASQUET CAMP
ENG6 MISSOULA RFD		10/3	LAPINSKI, NATHAN	2	E-692	0700-1900	GASQUET CAMP
WTT2 5J CONTRACTING		10/4	JACKSON, KEELY	2	E-161	0700-1900	GASQUET CAMP
WTT2 NORTHWEST		10/3	CRAVENER, JAMES	2	E-677	0700-1900	GASQUET CAMP
DOZ2 LET ER BUCK		10/4	LASSEN, STEVE	2	E-707	0700-1900	GASQUET CAMP
TFLD SMITH		10/4	SMITH, MARK	1	O-996	0700-1900	GASQUET CAMP
TFLD(T) BAKER		10/3	BAKER, FRANK	1	O-1011	0700-1900	GASQUET CAMP
HEQB(T) SOWELL		10/5	SOWELL, WILL	1	O-1015	0700-1900	GASQUET CAMP
BLACKWOODS REMS 6		10/6	LEFEVER, CHANDLER	4	O-476	0700-1900	GASQUET CAMP
ROUGH COUNTRY UTV1	X	10/7	PEACOCK, MIKE	2	E-544	0700-1900	GASQUET CAMP
EMPF BANKS	X	9/27	BANKS, CAMERON	1	O-885	0700-1900	GASQUET CAMP
EMTF FITZSIMMONS		9/27	FITZSIMMONS, W.	1	O-891	0700-1900	GASQUET CAMP
EMPF(T) KIM	X	9/28	KIM, EDWARD	1	O-883	0700-1900	GASQUET CAMP
EMTF COPPO		9/28	COPPO, JOSEPH	1	O-892	0700-1900	GASQUET CAMP
AMBO 5	X	10/1	BARROS, NOLAN	2	E-454	0700-1900	GASQUET CAMP
SOFR FULLMER		10/1	FULMER, DONALD	1	O-951	0700-1900	GASQUET CAMP

6. Work Assignments:
Patrol and mop up to the extent necessary on the Hurdy Gurdy, and from DP55 to DP62.

7. Special Instructions:
 REAFs need to check in and out with DIVS.
 Backhaul trash and excess supplies to Gasquet and update Field Maps from any removed accountable property.
 Be strategically and tactically prepared to alter and enhance changing environmental conditions.
 Ensure escape routes to staging areas or safety zones will not be compromised by mud slides or debris flows.

8. Communications

Name	Ch	Function	Rx Freq	Rx Tone	Tx Freq	Tx Tone	Mode	Notes
NIFC C35	3	COMMAND	173.8625	(T3) 131.8	163.8250	(T3) 131.8	A	SHIP LOOKOUT all rpt. linked to ICP
VFIRE 24	12	TACTICAL	154.2725	(T6) 156.7	154.2725	(T6) 156.7	A	
A/G CMD	13	A/G CMD	173.8500	0.0	173.8500	0.0	A	
CALCORD	15	TACTICAL	156.0750	(T6) 156.7	156.0750	(T6) 156.7	A	EMS AIR COORDINATOR
AIRGUARD	16	AIRGUARD	168.6250	0.0	168.6250	(T1) 110.9	A	EMERGENCY USE ONLY

9. Prepared by: Name: Mike Yeun RESL
 Signature: 
ICS 204 Date/Time: 9/26/2023 2200 Personnel Count: 73

ASSIGNMENT LIST (ICS 204 WF)

CONTROLLED UNCLASSIFIED
INFORMATION//BASIC

1. Incident Name: SMITH RIVER COMPLEX SOUTH	2. Operational Period: Date From: 09/27/23 Date To: 09/28/23 Time From: 0700 Time To: 0700	3. Branch XX	Division MM/PP
--	---	-------------------------------	---------------------------------

4. Operations Personnel: Page 1 of 1

Operations Section Chief: John Owings	Night Ops:
Branch Director: Joe Tieso	Branch Safety:
Division/Group Supervisor: Greg Lowdermilk	Air Attack:

5. Resources Assigned: ** Resources Below in Bold are 12 Hour **

Resource Identifier	ALS	LWD	Leader	Personnel	Request #	Hours	Reporting Location
CRW1 LASSEN IHC		10/1	SCHULTZE, ALLEN	20	C-126	0700-1900	STEVEN SPIKE
ENG3 SRF 311		9/27	MCCULLOCH, BROCK	7	E-664	0700-1900	STEVEN SPIKE
EMPF WILSON	X	9/27	WILSON, ADAM	1	O-884	0700-1900	STEVEN SPIKE
EMTF BAKER		9/27	BAKER, MATT	1	O-889	0700-1900	STEVEN SPIKE
SOFR GOLONDZINIER		9/29	GOLONDZINIER, JAMES	1	O-914	0700-1900	STEVEN SPIKE
SOFR(T) SORENSEN		9/29	SORENSEN, JOHN	1	O-974	0700-1900	STEVEN SPIKE

6. Work Assignments:


Patrol and mop up to the extent necessary from DP80 to DP62.

7. Special Instructions:

REAFs need to check in and out with DIVS.
Backhaul trash and excess supplies to Gasquet and update Field Maps from any removed accountable property.
Be strategically and tactically prepared to alter and enhance changing environmental conditions.
Ensure escape routes to staging areas or safety zones will not be compromised by mud slides or debris flows.

8. Communications

Name	Ch	Function	Rx Freq	Rx Tone	Tx Freq	Tx Tone	Mode	Notes
NIFC C35	3	COMMAND	173.8625	(T3) 131.8	163.8250	(T3) 131.8	A	SHIP LOOKOUT all rpt. linked to ICP
NIFC T4	8	TACTICAL	166.7250	(T3) 131.8	166.7250	(T3) 131.8	A	
A/G CMD	13	A/G CMD	173.8500	0.0	173.8500	0.0	A	
CALCORD	15	TACTICAL	156.0750	(T6) 156.7	156.0750	(T6) 156.7	A	EMS AIR COORDINATOR
AIRGUARD	16	AIRGUARD	168.6250	0.0	168.6250	(T1) 110.9	A	EMERGENCY USE ONLY

9. Prepared by: Name: Mike Yeun	RESL	Signature: 
ICS 204	Date/Time: 9/26/2023 2200	Personnel Count: 31

ASSIGNMENT LIST (ICS 204 WF)

CONTROLLED UNCLASSIFIED
INFORMATION//BASIC

1. Incident Name: SMITH RIVER COMPLEX SOUTH	2. Operational Period: Date From: 09/27/23 Date To: 09/28/23 Time From: 0700 Time To: 0700	3. Branch Division XX Stevens Repair
4. Operations Personnel:		Page 1 of 1

Operations Section Chief: John Owings	Night Ops:
Branch Director: Joe Tieso	Branch Safety:
Division/Group Supervisor: Steve Kovacs/Brett Matthews (T)	Air Attack:

5. Resources Assigned:		** Resources Below in Bold are 12 Hour **					
Resource Identifier	ALS	LWD	Leader	Personnel	Request #	Hours	Reporting Location
WTT2 NATIONAL 166		10/7	TIBBALS, JORDAN	2	E-166	0700-1900	STEVEN SPIKE
DOZ2 EVANS BROTHERS		10/2	EVANS, DOUG	3	E-169	0700-1900	STEVEN SPIKE
DOZ2 KENNETH		10/6	DREW, LARRY	2	E-294	0700-1900	STEVEN SPIKE
EXCA2 ADAMS		10/2	ADAMS, STEVE	2	E-298	0700-1900	STEVEN SPIKE
TFLD ALLEMAN		9/28	ALLEMAN, BILL	1	O-867	0700-1900	STEVEN SPIKE
BLACKWOODS REMS 3		10/3	ENGLUND, DALTON	4	E-311	0700-1900	STEVEN SPIKE
ROUGH COUNTRY UTV4	X	9/30	MARILLO, MJ	2	E-545	0700-1900	STEVEN SPIKE
EMPF BAGGETT	X	9/28	BAGGETT, MICHEE	1	O-886	0700-1900	STEVEN SPIKE
EMTF HERNANDEZ		9/28	HERNANDEZ, RAUL	1	O-893	0700-1900	STEVEN SPIKE
AMBO 1	X	10/4	KROLL, JEFF	2	E-93	0700-1900	STEVEN SPIKE
SOF2 BARNHART		10/2	BARNHART, JEFF	1	O-798	0700-1900	STEVEN SPIKE

6. Work Assignments:
Continue suppression repair with implemented repair plan.

7. Special Instructions:
 REAFs need to check in and out with DIVS.
 Backhaul trash and excess supplies to Gasquet and update Field Maps from any removed accountable property.
 Be strategically and tactically prepared to alter and enhance changing environmental conditions.
 Ensure escape routes to staging areas or safety zones will not be compromised by mud slides or debris flows.

8. Communications

Name	Ch	Function	Rx Freq	Rx Tone	Tx Freq	Tx Tone	Mode	Notes
NIFC C55	5	COMMAND	173.8375	(T3) 131.8	165.5125	(T3) 131.8	A	RC DIP all rpt. linked to ICP
NIFC T1	6	TACTICAL	168.0500	(T3) 131.8	168.0500	(T3) 131.8	A	
A/G CMD	13	A/G CMD	173.8500	0.0	173.8500	0.0	A	
CALCORD	15	TACTICAL	156.0750	(T6) 156.7	156.0750	(T6) 156.7	A	EMS AIR COORDINATOR
AIRGUARD	16	AIRGUARD	168.6250	0.0	168.6250	(T1) 110.9	A	EMERGENCY USE ONLY

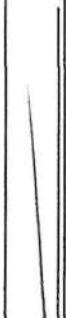
9. Prepared by: Name: Mike Yeun RESL

Signature:

ICS 204 Date/Time: 9/26/2023 2200 Personnel Count: 21

ICS 205 - INCIDENT RADIO COMMUNICATIONS PLAN

CONTROLLED UNCLASSIFIED
INFORMATION//BASIC


1. Incident Name: SMITH RIVER COMPLEX SOUTH Incident Channels		2. Date/Time Prepared Date: 09/26/2023 Time: 1930		3. Operational Period: Date From: 09/27/23 Time From: 0700		Date To: 09/28/23 Time To: 0700			
4. Communications									
Ch#	Function	Name	Assigned To	Rx Freq	Rx Tone	Tx Freq	Tx Tone	Mode	Notes
1	COMMAND	NIFC C3	ALL BRANCHES	170.4250	(T3) 131.8	168.0750	(T3) 131.8	A	CAMP 6 all rpt. linked to ICP
2	COMMAND	NIFC C34	ALL BRANCHES	173.9750	(T3) 131.8	164.8625	(T3) 131.8	A	MONKEY RIDGE all rpt. linked to ICP
3	COMMAND	NIFC C35	ALL BRANCHES	173.8625	(T3) 131.8	163.8250	(T3) 131.8	A	SHIP LOOKOUT all rpt. linked to ICP
4	COMMAND	NIFC C48	ALL BRANCHES	165.4625	(T3) 131.8	162.1750	(T3) 131.8	A	HIGH DIVIDE all rpt. linked to ICP
5	COMMAND	NIFC C55	ALL BRANCHES	173.8375	(T3) 131.8	165.5125	(T3) 131.8	A	RC DIP all rpt. linked to ICP
6	TACTICAL	NIFC T1	STEVEN REPAIR	168.0500	(T3) 131.8	168.0500	(T3) 131.8	A	
7	TACTICAL	NIFC T3	SMITH REPAIR	168.6000	(T3) 131.8	168.6000	(T3) 131.8	A	
8	TACTICAL	NIFC T4	DIV MM / PP	166.7250	(T3) 131.8	166.7250	(T3) 131.8	A	
9	TACTICAL	NIFC T5	DIV RR/SS/ VV	166.7750	(T3) 131.8	166.7750	(T3) 131.8	A	
10	TACTICAL	NIFC T6	GASQUET REPAIR	168.2500	(T3) 131.8	168.2500	(T3) 131.8	A	
11	TACTICAL	VFIRE 22		154.2650	(T6) 156.7	154.2650	(T6) 156.7	A	
12	TACTICAL	VFIRE 24	DIV LL/ YY	154.2725	(T6) 156.7	154.2725	(T6) 156.7	A	
13	A/G CMD	A/G CMD	ALL BRANCHES	173.8500	0.0	173.8500	0.0	A	
14	A/G TAC	A/G TAC	A/G TACTICAL	169.4875	0.0	169.4875	0.0	A	
15	TACTICAL	CALCORD	ALL DIVS	156.0750	(T6) 156.7	156.0750	(T6) 156.7	A	EMS AIR COORDINATOR
16	AIRGUARD	AIRGUARD	ALL DIVS	168.6250	0.0	168.6250	(T1) 110.9	A	EMERGENCY USE ONLY
17									
18									
19									
20	AIRGUARD	AIRGUARD	EMERGENCY	168.6250	0.0	168.6250	(T1) 110.9	A	
5. Special Instructions									
COMMUNICATION PHONE # 208-850-7093									
6. Prepared by (Communications Unit Leader): Name: Chris Perry				NIMS IAP		Signature: 			
				Date/Time: 09/26/23				1930	

ICS 205 - INCIDENT RADIO COMMUNICATIONS PLAN

1. Incident Name: SMITH RIVER IA Page 2		2. Date/Time Prepared Date: 09/26/2023 Time: 1930		3. Operational Period: Date To: 09/28/23 Time To: 0700	
--	--	--	--	---	--

4. Communications									
Ch#	Function	Name	Assigned To	Rx Freq	Rx Tone	Tx Freq	Tx Tone	Mode	Notes
1	DISPATCH	SRF 12	DISPATCH	172.3750	0.0	164.1750	(T12) 127.3	A	GORDON MOUNTAIN
2	DISPATCH	SRF 4	DISPATCH	172.3750	0.0	164.1750	(T4) 136.5	A	SHIP MOUNTAIN
3	DISPATCH	SRF 1	DISPATCH	172.3750	0.0	164.1750	(T1) 110.9	A	MONKEY RIDGE
4	DISPATCH	HUU RPT	FORTUNA	151.2500	(T1) 110.9	159.4050	(T14) 151.4	A	FORTUNA
5	TACTICAL	NIFC T2	TACTICAL	168.2000	0.0	168.2000	0.0	A	I/A SURGE
6	TACTICAL	R5 T4	TACTICAL	166.5500	0.0	166.5500	0.0	A	
7	TACTICAL	R5 T5	TACTICAL	167.1125	0.0	167.1125	0.0	A	
8	TACTICAL	R5 PROJ	TACTICAL	168.6625	0.0	168.6625	0.0	A	
9	TACTICAL	VTAC 14	TACTICAL	159.4725	(T6) 156.7	159.4725	(T6) 156.7	A	
10	TACTICAL	CDF T3	TACTICAL	151.1750	(T16) 192.8	151.1750	(T16) 192.8	A	
11	TACTICAL	R5 T6	TACTICAL	168.2375	0.0	168.2375	0.0	A	
12	TACTICAL	LOCAL	GASQUET VFD	154.4150	0.0	154.4150	(T16) 192.8	A	GASQUET VFD
13	A/G	A/G-43	PRIMARY A/G	167.6000	0.0	167.6000	0.0	A	PRIMARY A/G
14	A/G	A/G-08	SECONDARY A/G	166.8750	0.0	166.8750	0.0	A	SECONDARY A/G
15	TACTICAL	CALCORD	ALL DIVS	156.0750	(T6) 156.7	156.0750	(T6) 156.7	A	EMS AIR COORDINATOR
16	AIRGUARD	AIRGUARD	EMERGENCY	168.6250	0.0	168.6250	(T1) 110.9	A	EMERGENCY USE ONLY
17									
18									
19									
20	AIRGUARD	AIRGUARD	EMERGENCY	168.6250	0.0	168.6250	(T1) 110.9	A	

5. Special Instructions

6. Prepared by (Communications Unit Leader): Name: Chris Perry
 Signature: 
 Date/Time: 09/26/23
 NIMS IAP: 1930

AIR OPERATIONS SUMMARY ICS-220

Incident Name / Number	Sunrise	Startup	Cutoff	Sunset
SMITH RIVER COMPLEX - CA-SRF-000968	7:07	7:37	18:38	19:04
General Remarks, Safety Notes, Hazards, Air Operations Special Equipment, etc.				
TRACK ALL DIPSITE LOCATIONS / NUMBER OF DIPS / GALLONS TAKEN.				
TRACK ALL DROP LOCATIONS / NUMBER OF DROPS / GALLONS DROPPED.				
COLLECT ALL GPS DATA IN DEGREES, MINUTES, DECIMAL MINUTES, FORMAT.				

AVOID aerial application of retardant / foam / agent within 300' of waterways, bodies of water, etc. If retardant / foam / agent is dropped within these areas, immediately notify the AOB and provide the following information: Lat / long, estimated number of gallons and a map detailing the area.

Record % Buckets Dropped in Cost Summaries Notes: % Fed and % Private

Time Prepared	Date Prepared	Prepared By
15:00	Tuesday, September 26, 2023	Kyle Beinschroth
Shutdown	Operational Period - Date	Operational Period - Time
19:34	Wednesday, September 27, 2023	0700-2100
Helibase Information		
Name Cave		
Latitude 42 08.250		
Longitude 123 40.916		
TFR Information		
Request # A-160 NM		
Rectangle Altitude: 10,000' MSL		
Centerpoint: Multi Lat		
NOTAMS: Multi Long		
Frequency: 3/0449		
http://tfr.faa.gov/tfr2/list.html		

Frequencies	TX	Tone	RX	Tone	AM / FM	Position	Name	Phone	Trainee/Helibase	Phone
Command-South (Linked)	See South 205				FM	SOUTH AOB	Kyle Beinschroth	760-617-9493		
Command-North (Linked)	See North 205				FM	SOUTH ASGS				
AIR / GROUND - TACTICAL	169.4875	0.0000	169.4875	0.0000	FM					
AIR/AIR ROTARY WING	123.7250	0.0000	123.7250	0.0000	AM					
TFR	126.0750	0.0000	126.0750	0.0000	AM					
FW AIR TACTICS	173.7000	0.0000	173.7000	0.0000	FM	ASGS(t)	Tom Rawlings	406-261-1673	Cave Helibase	971-713-0297
AIR/GROUND COMMAND	173.8500	0.0000	173.8500	0.0000	FM	Cave HEBM	Cammy Roy	907-750-8620	Cave Email	ivhb2023@gmail.com
VMED 29-MEDICAL North	155.3475	156.7	155.3475	156.7	FM					
TOLC	168.1375	0.0000	168.1375	0.0000	FM					
CALCORD - MEDICAL South	156.0750	156.7 (6)	156.0750	156.7 (6)	FM					
AIRGUARD - Emergency Only	168.6250	110.9 (1)	168.6250	0.0000	FM	UR36	Jacob Shuler	707-672-3187		

See IAP for IA 205's

HELICOPTERS													
FAA #	Type	Make/Model	Helibase	Avail	Start	Remarks	FAA #	Type	Make/Model	Helibase	Avail	Start	Remarks
HB-16FH	1	UH-60	Cave	0800	0830	LL BUCKET	H-168BH	3	AS-350B3	Cave	0800	0830	PAX/RECON/ILL
H-510	2	Bell 212	Cave	0800	0830	LL BUCKET							
364TA	3	AS350	Gasquet	0800	0830	LL BUCKET / Recon							
UR36	3	DJI M600	Gasquet	0800	0830	IR/PSD (Shuler Mod.)							
SOUTH	MEDICAL A/C												
TBD	3	MH-65	Humboldt			Coast Guard							
H-902	2	UH1	Kneeland			Cal Fire							
H-14	3	A-Star B3	Redding			CHP							

FIXED WING (Use Page 2 if Needed)													
FAA #	Type	Make/Model	Base	Avail	Start	Remarks	FAA #	Type	Make/Model	Base	Avail	Start	Remarks
TBD	1	TBD	RDD	0800	0830	ATGS (RDD) (Pool)	TBD	1	TBD	MFR	0800	0830	ATGS (MFR) (Pool)

FINANCE MESSAGE

Fire Name: Smith River Complex
Fire Number: CA-SRF-000968
Accounting Code: P5 QJ6L (0510)
Email: 2023.smithrivercomplex.finance@firenet.gov

Finance Documents Needed upon "Check In" (If Not Already Submitted):

Please email these documents or scan the QR Code below, attach & submit.			
FED Equipment/ Crews: <ul style="list-style-type: none"> • Manifest - showing employment type (GS or WG) or AD rates if applicable 	Overhead: <ul style="list-style-type: none"> • AD/Casual Hire Form • If regular Agency please ensure "GS" or "WG" is written on your first CTR 	Contract Equipment/ Contract Crews: <ul style="list-style-type: none"> • Agreement • Manifest • Resource Order • Inspections 	Cooperator: <ul style="list-style-type: none"> • Cooperative Agreement • Resource Order

When emailing finance:

- Overhead/FED: *subject line:* TIME, Resource #, Resource Name
- Equipment/Cooperator: *subject line:* EQTR, Resource #, Resource Name

Prior to your demob date, please contact Finance *via email* to expedite the demob process. Upon submittal of your final CTR/Shift Tickets, Finance will email you copies of your pay documents for review and signature.



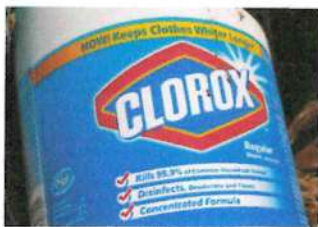
Smith River Complex Incident: Resource Advisor Message

IMPORTANT: Yellow/White Striped flagging 'Equipment Exclusion' indicates resource AVOIDANCE areas.

Cultural and Heritage Resources:

The area you are working in is rich in cultural and heritage resources which may be encountered while fighting fire or during suppression repair. Avoid disturbing cultural or heritage resource if encountered.

- GPS its location and take a photo, do not remove or collect anything. Work with your division to notify a READ for recommendations on how to proceed.
- Some cultural resources present hazardous conditions, such as mining shafts. Be attentive to these potential hazards when working around known mining areas or in rocky areas.
- Known resources may be flagged ahead in work areas.
- Finding of cultural resources should not be reported over the radio.
- Coordinate with READs on all dozer operations to minimize impacts to cultural and heritage sites. Limit dozer operations to pre-existing dozer lines and limit widths to the extent possible.



Port Orford Cedar root disease

Some local drainages are infected with a root disease that spreads via mud and water and kills Port Orford cedar trees. To prevent spreading this disease to uninfected areas, all water tenders and engines will apply bleach to their tanks (1:1000 ratio). **Designated Draft Site Location by Division (setup with Bleach and fish screen)**

- Panther Flat Day Use - Gasquet Structure Grp, Div A
- DP 10 (Gasquet Ranger District) - ALL Divs
- DP85 (Coon Creek) - Div YY



WEED WASH:

The area in and around the Smith River Complex, are home to many sensitive species. Infestations of highly invasive plant species are one of the largest threats to sensitive species populations here. Spread via vehicles and foot traffic as well as re-activation via fire is of high concern. To help protect these sensitive places, do not park in and try to avoid areas flagged areas. **Make sure to visit the WEED WASH 1 mile east Gasquet Base Camp on south side pullout State Highway 199.**



Human Resource Message Smith River Complex Fire

HUMAN RESOURCES MESSAGE

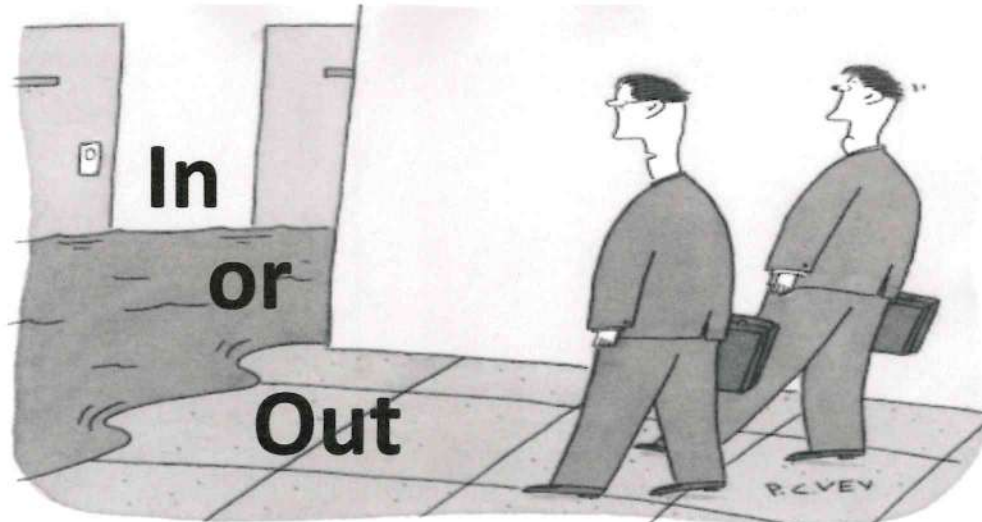
My name is Anthony “Tony” Torres. I am the Human Resource Specialist assigned to the incident. As the Human Resource Specialist, I am available to incident personnel to provide work environment information and assist with conflict resolution if needed. If I can be of assistance to you, please let me know. I’m in the Yurt at the end of main street. You can also contact me by cell phone at 505-249-2341 or via e-mail at Anthony.Torres@usda.gov

As a reminder, we have a zero tolerance for illegal drugs, alcohol, sexual harassment, and any other type of inappropriate behavior. We expect all incident personnel to treat each other with dignity and respect, and to work as a team to support a positive work environment.

Be Safe! Keep your positive attitude and have a great day!

Tony Torres - (HRSP) – (505) 249-2341

Training Specialist Message



"Let's not panic till we know whether it's coming in or going out."

All trainees come see the Training Specialist when you check in at the incident and before you check out.

Training is located at Ward Air Field ICP on Trailer Row if you can't make it then use the QR code, or give me a call.



John Fakehany

909-693-9748

Smith River Complex
(South)

CHECK-IN

1. Scan the QR code and select INITIAL CHECK IN
2. Submit all required documents to Finance by emailing them to 2023.SmithRiverComplex.Finance@firenet.gov
3. Go find your incident supervisor or attend morning briefing

E-Mail: 2023.SmithRiverComplex.Checkin@firenet.gov

DEMOB

1. Make sure you are current with your CTR's or Shift Tickets.
2. Stop by the Check-In / Dmob trailer to pick up your 221 Demob Sheet.
3. Return any **Supplies** and **Communication** equipment, get inspected and weed washed. Tie in with the **Training Specialist** if you are a trainee.
4. Finalize time with **Finance**
5. Submit the completed 221 to DMOB. Safe travels !

Questions ? Call DMOB at 608 797-6554

Email: 2023.SmithRiverComplex.demob@firenet.gov

SMITH RIVER COMPLEX US-CA-SRF-000968

TENTATIVE RELEASE

09/27/2023

RESOURCE #	TIME	Item	Resource ID
OVERHEAD			
O-857	0700	EQPM	AMERINE, S.
O-863	0800	RCDM	FORBES, K.
O-869	0815	DIVS	ESTRADA, F.
O-870	0830	DIVS	WILLIAMSON, T.
O-988	0900	ASGS	DICKSON, S.

SMITH RIVER COMPLEX US-CA-SRF-000968

TENTATIVE RELEASE

09/28/2023

RESOURCE #	TIME	Item	Resource ID
EQUIPMENT			
E-301`	0830	EXC2	SMOKEY MOUNTAIN
E-485	0830	STK1	INDIHAR, P.

OVERHEAD

O-262	0700	ARCH	SEGROVES, A.
O-645	0730	ARCH	SULLIVAN, S.
O-701	0745	EMPF	HOESE, M.
O-705	0800	RADO	LOPEZ, R.
O-840	0900	RCDM	WEINBRENNER, L.
O-849	0915	DRIV	MILLER, S.
O-854	0930	GISS	HEEREN, A.
O-864	0945	GSUL	YOUNG, V.
O-880	1000	DPRO	HARLAN, S.
O-884	0815	EMPF	WILSON, A.
O-885	0830	EMPF	BANKS, C.
O-889	0845	EMTF	BAKER, M.
O-890	0900	EMTF	FARRER, J.
O-891	0915	EMTF	FITZSIMMONS, W.



Logistics Operating Hours

Caterer at Gasquet base: Breakfast: 0600-0900, Dinner: 1800-2100

Shower: 0500 - 1200 then 1400 - 2300

Supply: 0630 - 2100

Laundry: 0500 - 2300

Fuel at Gasquet: 0600 - 1300 then 1500 to 2100

Medical Trailer: 0600 - 2200, (Emergencies 24/7)

Weed Wash: 0700 - 1900

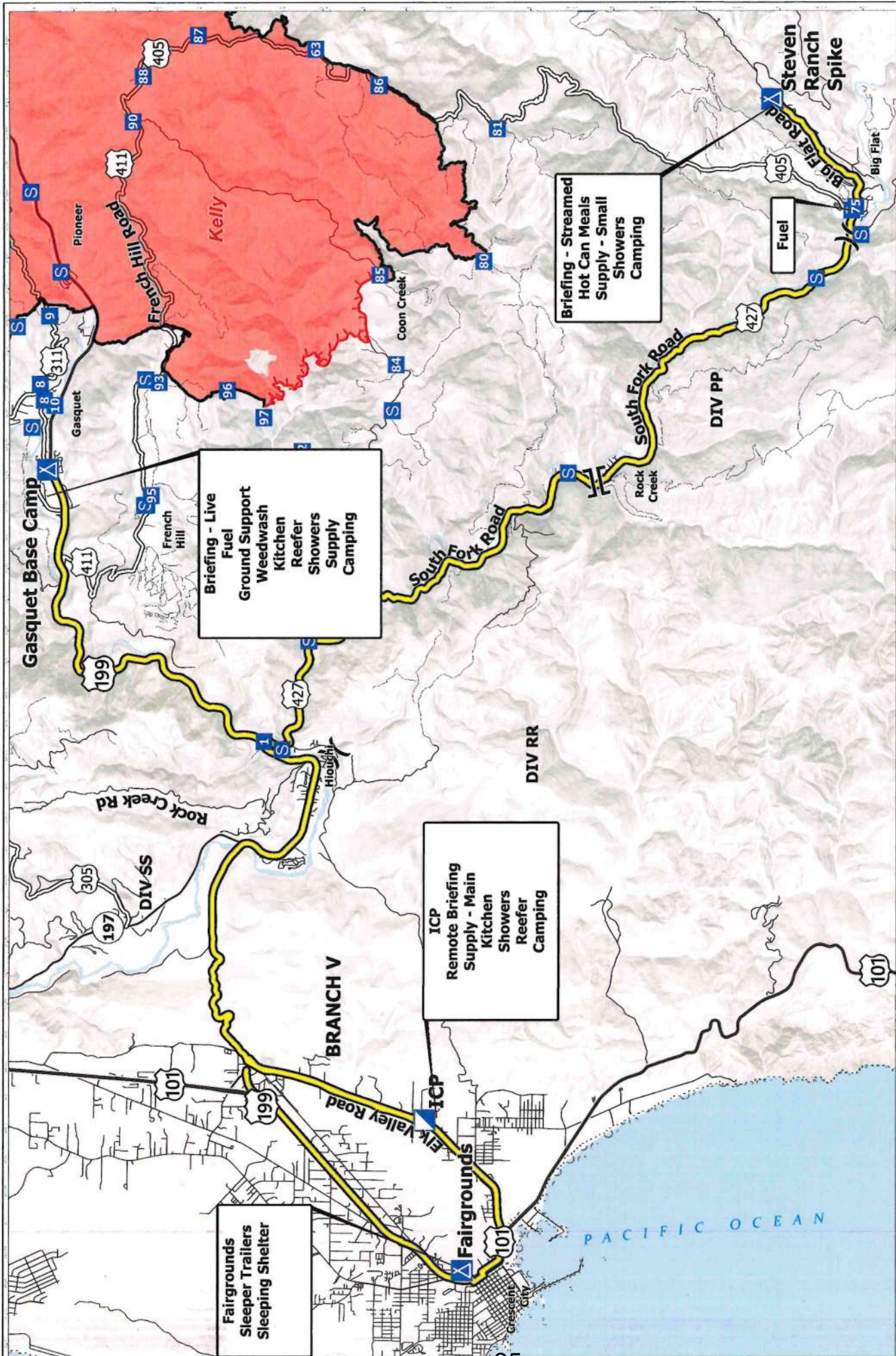
- There will not be food service to Steven Ranch Spike until (possibly) Thursday Dinner.
- The incident is providing all meals! Personnel that have been approved for hotels are not approved for per-diem. Meals procured outside of what's provided are not covered.

LINE ORDER FORM

ORDER #	DATE & TIME ORDERED Received from the Line	WHO PLACED ORDER DIVS, OPS, etc...	DELIVER to (DIV, Helispot, DP, etc.) Division, Heli-Spot, Drop Point, etc.	MODE of DEVIVERY Drive, Helo, pick-up			
Order Received in Communications By:				TIME:			
Communications Relayed/Placed the Order To:				TIME:			
Order Shipped to the Line By (Name):				TIME:			
ITEM#	DESCRIPTION			AMOUNT			
1	1,000 Foot Hose Lay: Includes the following 10 lengths, 1 ½" x 100' Hose. 10 lengths, 1" x 100' Hose. 10ea. 1 ½" Gated Wyes. 10ea. 1 ½" to 1" Reducers. 10ea. 1" Nozzles.						
2	2,000 Foot Hose Lay: Includes the following 20 lengths, 1 ½" x 100' Hose. 20 lengths, 1" x 100' Hose. 20ea. 1 ½" Gated Wyes. 20ea. 1 ½" to 1" Reducers. 20ea. 1" Nozzles.						
3	3,000 Foot Hose Lay: Includes the following 30 lengths, 1 ½" x 100' Hose. 30 lengths, 1" x 100' Hose. 30ea. 1 ½" Gated Wyes. 30ea. 1 ½" to 1" Reducers. 30ea. 1" Nozzles.						
ITEM#	REQUESTED ITEM	NFES#	AMOUNT	ITEM#	REQUESTED ITEM	NFES#	AMOUNT
4	Backpack Pump, 5 gallon	1149		26	Batteries, "AA", (package)	0030	
5	Foam, 5 gallon	1145		27	Gasoline, Unleaded (gallon)		
6	Hose, ¾ inch, 50 ft. length	1016		28	Oil, 2 Cycle Mix (quart)	0341	
7	Hose, 1 inch, 100 ft. length	0966		29	Diesel, straight (gallon)		
8	Hose, 1 ½ inch, 100 ft. length	0967		30	Oil, Bar & Chain (gallon)	1880	
9	Increaser, ¾" to 1"	2235		31	Fusees (box)	0105	
10	Increaser, 1" to 1 ½"	0416		32	Torch, Drip Torch ea.	0241	
11	Nozzle, Garden ¾ inch	0136		33	Mix, Drip Torch 3-1, 5 gal.		
12	Nozzle, Forester, 1"	0024		34	Flagging, Ribbon, Color/Roll		
13	Nozzle, KK Type, 1"	1081		35	Washcloth, Waterless	0206	
14	Nozzle, KK Type, 1 ½"	1082		36	Water, Cubi, 5 gallon ea.	0048	
15	Reducer, 1" to ¾"	0733		37	Water, Bottled, (case)		
16	Reducer, 1 ½" to 1"	0009		38	Sports Drink, Gatorade (case)		
17	Tee, Hoseline, 1"x1"x ¾"	1809		39	Food, MRE's (12 per Box)	1842	
18	Tee, Hoseline, 1"x1"x 1"	2240		40	Pump Kit, High Pressure	0870	
19	Tee, Hoseline, 1 ½" x 1 ½" x 1"	0230		41	Pump, High Pressure	0148	
20	Wye, Gated, ¾" inch	0904		42	Pump Kit, Light Weight	0670	
21	Wye, Gated, 1"	0259		43	Sprinkler Kit	1048	
22	Wye, Gated, 1 ½"	0231		44	Pump Kit, Volume	6041	
23	Tank, Collapsible. Capacity Gallons?			45	Mop-Up Kit	0772	
24	Tank, Folding/Frame. Capacity ??						
25	Wrap, Structure (roll)	0881					

Date and Time Needed: _____ Point of Contact at Delivery Location: _____

OTHER / NOTES:

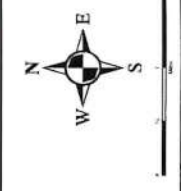


Briefing - Live
Fuel
Ground Support
Weedwash
Kitchen
Reefer
Showers
Supply
Camping

Briefing - Streamed
Hot Can Meals
Supply - Small
Showers
Camping

ICP
Remote Briefing
Supply - Main
Kitchen
Showers
Reefer
Camping

Fairgrounds
Sleeper Trailers
Sleeping Shelter

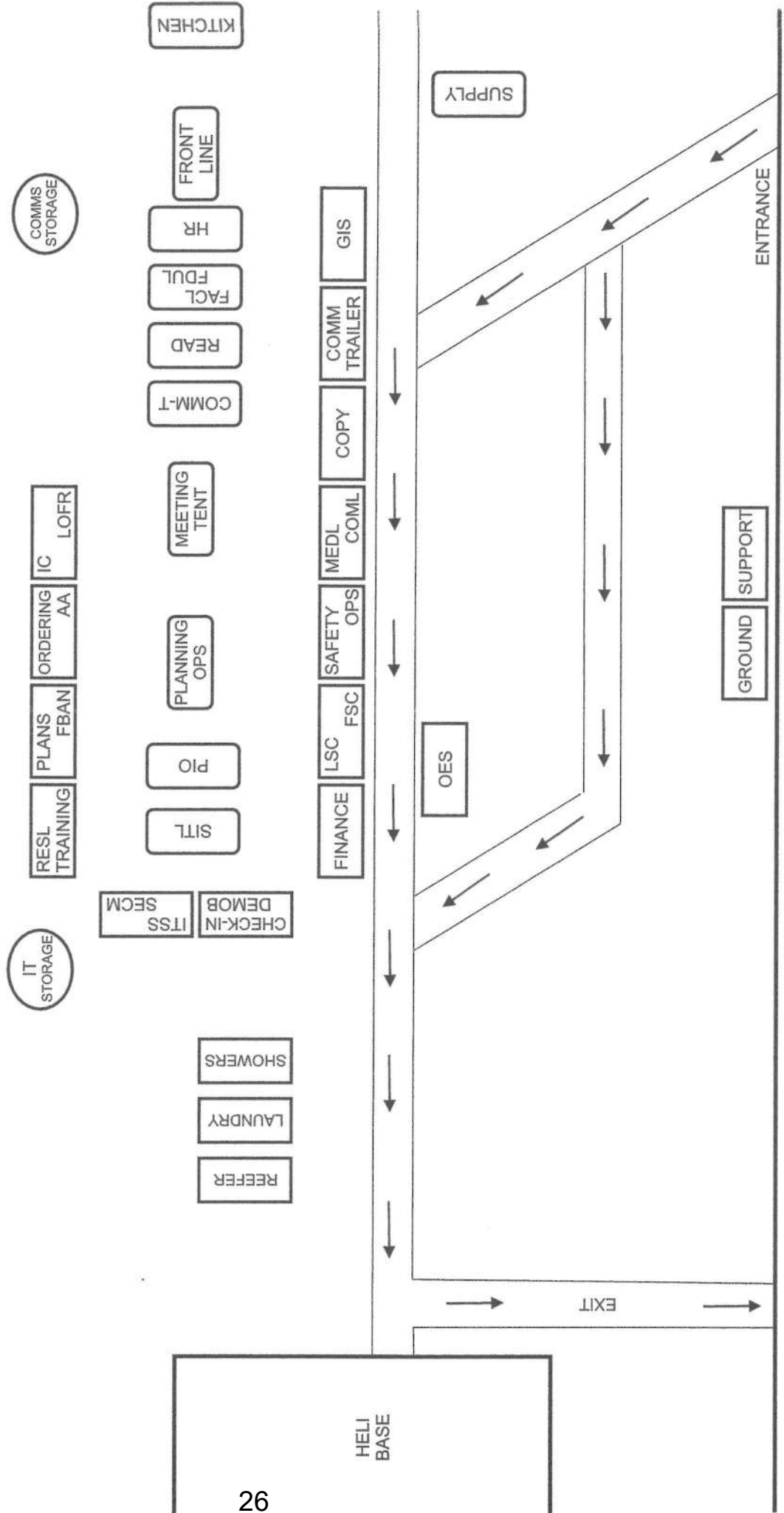


- X Division Break
- JL Branch Break
- Incident Command Post
- Drop Point
- Routes
 - Interstate
 - Highway
 - Local Connecting Road
 - County Road
- Camp
 - Staging Area
 - Contained
 - Uncontained
 - Smith River Cx Wildfire Perimeter



TRANSPORTATION
 Smith River Complex - South
 CA-SRF-000968

Smith River Incident Base



UNIT LOG (ICS 214)

1. Incident Name: <p style="text-align: center; margin: 0;">SMITH RIVER COMPLEX SOUTH</p>	2. Operational Period: Date From: 9/27/23 Date To: 9/28/23 Time From: 0700 Time To: 0700
--	--

3. Unit Name/Designators	4. Unit Leader (Name and ICS Position)
---------------------------------	---

5. Personnel Assigned/Designators

NAME	ICS POSITION	HOME BASE

6. Activity Log (Continue on Reverse)

TIME	MAJOR EVENTS

7. Prepared By:	Date/Time:
------------------------	-------------------

1. Incident Name				2. Operational Period							
Smith River Complex – South				Date/Time: 9/27/2023 (0700-1900)							
3. Incident Medical Aid											
Name		Location		Medical Emergency Contact		ALS Yes No					
Frontline Medical Supply Unit		Gasquet Base Camp		COMMAND		X					
Ambulance 6		Steven Ranch Spike		COMMAND		X					
Ambulance 7		Gasquet Base Camp		COMMAND		X					
4. Air Rescue / Air Ambulance Services											
Name		Location / Contact		Type of Aircraft & Capability							
Cal Fire 902		South Smith Comms		Helicopter Type 2 ALS / Day Hoist Only							
CHP H14/H15		South Smith Comms		Helicopter Type 3 ALS / Day Hoist Only							
Reach 5		South Smith Comms		Helicopter Type 3 ALS / Medevac only / 24hrs							
5. Hospitals (all times estimated from incident location)											
Name & Trauma Level		GPS Datum – WGS 84 Degrees Decimal Minutes		Travel Time (From ICP) Air Ground		Phone		Helipad Yes No		Address	
Sutter Coast Hospital Level 4		Lat:	N 41° 46.423'		N/A	5 MINS	707-464-8888		X	800 E. Washington Blvd Crescent City, CA 95531	
		Long:	W 124° 11.643'								
Asante Rogue Regional Level 2		Lat:	N 42° 19.050'		50 MINS	3.5 HRS	541-789-7000	X		2825 E. Barnett Rd. Medford, OR 97504	
		Long:	W 122° 49.839'								
Mercy Medical Center Level 2		Lat:	N 40° 34.300'		65 MINS	4.5 HRS	530-225-7200	X		2175 Rosaline Ave. Redding, CA 96001	
		Long:	W 122° 23.754'								
UC Davis Medical Center Level 1 – Burn Center		Lat:	N 38° 33.282'		1.5 HRS	7 HRS	916-734-2011	X		4301 X Street Sacramento, CA 95817	
		Long:	W 121° 27.279'								
6. Division / Crew Emergency Pre-Plan				<i>Update and discuss with assigned resources daily.</i>							
Fireline EMT / Medic's Division / Branch Location											
Air Hoist site location site: Lat: / Long: / Elevation:											
Helispot: Lat: / Long: / Elevation: MED LZ:											
7. Prepared By (Medical Unit Leader)			8. Date/Time		9. Reviewed By (Safety Officer)		10. Date/Time				
<i>Gena Foulkes</i> MEDL			09/26/2023 1800		<i>Mike Seymour</i> SOF2		9/26/2023 1800				

Medical Incident Report

FOR A **NON-EMERGENCY INCIDENT**: WORK THROUGH CHAIN OF COMMAND TO REPORT AND TRANSPORT INJURED PERSONNEL AS NECESSARY.

FOR A **MEDICAL EMERGENCY**: IDENTIFY ON SCENE INCIDENT COMMANDER BY NAME AND POSITION AND ANNOUNCE **"MEDICAL EMERGENCY"** TO INITIATE RESPONSE FROM COMMUNICATIONS

Use the following items to communicate situation to communications/dispatch.

1. CONTACT COMMUNICATIONS / DISPATCH (Verify correct frequency prior to starting report)
Ex: "Communications, Div. Alpha. Stand-by for Emergency Traffic."

2. INCIDENT STATUS: *Provide incident summary (including number of patients) and command structure.*
Ex: "Communications, I have a Red priority patient, unconscious, struck by a falling tree. Requesting air ambulance to Forest Road 1 at (Lat./Long.) This will be the Trout Meadow Medical Incident, IC is TFLD Jones. EMT Smith is providing medical care."

Severity of Emergency AND Transport Priority (priority 1, 2, 3)	<input type="checkbox"/> RED / PRIORITY 1 Life or limb threatening injury or illness. Evacuation need is IMMEDIATE <i>Ex: Unconscious, difficulty breathing, bleeding severely, 2° – 3° burns more than 4 palm sizes, heat stroke, disoriented.</i> <input type="checkbox"/> YELLOW / PRIORITY 2 Serious injury or illness. Evacuation may be DELAYED if necessary. <i>Ex: Significant trauma, unable to walk, 2° – 3° burns not more than 1-3 palm sizes.</i> <input type="checkbox"/> GREEN / PRIORITY 3 Minor injury or illness. Non-Emergency transport <i>Ex: Sprains, strains, minor heat-related illness.</i>
Nature of Injury or Illness & Mechanism of Injury	Brief Summary of Injury or Illness (Ex: Unconscious, Struck by Falling Tree)
Transport Request	Air Ambulance / Short Haul/Hoist Ground Ambulance / Other
Patient Location	Descriptive Location & Lat. / Long. (WGS84)
Incident Name	Geographic Name + "Medical" (Ex: Trout Meadow Medical)
On-Scene Incident Commander	Name of on-scene IC of Incident within an Incident (Ex: TFLD Jones)
Crew Patient Care	Name of Care Provider (Ex: EMT Smith)

3. INITIAL PATIENT ASSESSMENT: *Complete this section for each patient as applicable (start with the most severe patient)*

Patient Assessment: (IRPG PAGE 106)	Age:	Weight:	Chief Complaint:
Skin Signs: (color/moisture/temp)	Level of Consciousness:	BP:	HR: Respirations:
Treatment:			

4. TRANSPORT PLAN:

Evacuation Location (*drop point, intersection, helispot, Lat. / Long, hazards*) Patient's ETA to Location:

5. ADDITIONAL RESOURCES / EQUIPMENT NEEDS:

Paramedic / EMT - Crews - Immobilization Devices - AED - Oxygen - Trauma Bag - IV/Fluid(s) - Splints - Rope rescue - Wheeled litter - HAZMAT - Extrication

6. COMMUNICATIONS: Identify State Air/Ground EMS Frequencies and Hospital Contacts as applicable

Function	Channel Name/Number	Receive (RX)	Tone/NAC *	Transmit (TX)	Tone/NAC *
COMMAND					
AIR-TO-GRND					
TACTICAL					

7. CONTINGENCY: Considerations: *If primary options fail, what actions can be implemented in conjunction with primary evacuation method? Be thinking ahead.*

8. ADDITIONAL INFORMATION: *Updates/Changes, etc.*

REMEMBER: Confirm ETA's of resources ordered. Act according to your level of training
 Be Alert - Keep Calm - Think Clearly - Act Decisively

*** Follow up with MEDL upon return to ICP ***