

INCIDENT ACTION PLAN SMITH RIVER COMPLEX SOUTH INCIDENT

CA-SRF-000968

P5 QJ6L (0510)



Sunday

OPERATIONAL PERIOD

10/1/2023 0700

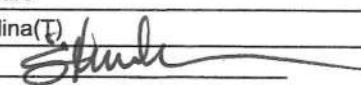
to

10/2/2023 0700



INTENTIONALLY LEFT BLANK

ORGANIZATION ASSIGNMENT LIST (ICS 203)

1. Incident Name: SMITH RIVER COMPLEX SOUTH		2. Operational Period: Date From: 10/1/2023 Time From: 0700		Date To: 10/2/2023 Time To: 0700	
3. Incident Commander(s) and Command Staff:			7. Operation Section:		
IC/UC's	James Aragon IC/Mike Page(T)	Operations	John Owings/John Chester(T)		
Safety Officer	Mike Seymour/Jayson Smith	Planning OPS	Mike Milkovich/Jason Flores(T)		
Information Officer	Mark Tibideau/Lyn Sieliet	Night Ops			
Liaison Officer	Jerry Martinez	Staging Area			
Human Resources	Tony Torres	Branch	V	Rob Szczepanek/Rob DeCamp(T)	
4. Agency/Organization Representatives:		Division/Group	R/S/V	Andres Luna/Steve Rushing(T)	
Agency/Organization	Name	Division/Group	Gasquet Repair	Ryan Aeby	
SRF Forest Supervisor	Ted Mcarthur	Division/Group	Smith Repair	Anna Wright/Aaron Schumacher/Adam Lara	
SRF Agency Admin.	K. Allen/K. Otto/V. Keeler	Division/Group			
CAL OES (ESC)	Ryan Wakefield	Division/Group			
CAL Fire	Garrett Dean	Division/Group			
CHP	LT. Pete Roach	Branch	XX	Joe Tieso/Ken Van Wig(T)	
Del Norte Co. OEM	Randy Hooper	Division/Group	K/L	Derek Sams/Mark Smith(T)	
Crescent City Manager	Eric Wier	Division/Group	M/P	Greg Lowdermilk	
Cal Trans	Paul Johnson	Division/Group	Stevens Repair	Steve Kovacs	
Del Norte Sheriff LELO	Jon Maxwell	Division/Group			
Crescent City Fire Chief	Kevin Carey				
NPS Superintendent	Steven Mietz	Division/Group			
Bureau of Indian Affairs	Nathan Gogna	Division/Group			
Tolowa Dee-ni' Nation	Rachel McCain	Division/Group			
Red Cross	Mary Dorman	Branch			
Resource Advisor	Tony Permas	Division/Group			
5. Planning Section:		Division/Group			
Chief	Steve Anderson/Bryan Vergne(T)	Division/Group			
Resource Unit	Mike Yeun/Ed Morgan	Division/Group			
Situation Unit	Ray Rook/Branden Strohsbeen	Division/Group			
Documentation Unit	Sheila Larsen(V)	Division/Group			
Demobilization Unit	Jan Grisedale/Scott Laurie	Division/Group			
GISS	Rene Gonzales/Richard Murillo/Eric Ball(T)	Branch			
FBAN	Linda Ferguson(T)	Division/Group			
IMET	Matt Mehle	Division/Group			
TNSP	John Fakehaney	Division/Group			
SCKN	Patrick Volosin(T), Bill Johnston(T)	Division/Group			
ITSS	Brett Davidson/Rocio Del Arroyo(T)	Division/Group			
6. Logistics Section:		Air Operations Branch		Director:	Kyle Beinschroth
Chief	Scott Ashbach/Dave Alicea/Aron Levin	Air Tactical Group Supervisor			
Supply Unit	Matt Berger(T)	Helibase Manager			
Facilities Unit	Art Curley/Dave Senevirante(T)				
Ground Support Unit	Chris Syler/Jeff Lantello(T)	8. Finance/Administration Section:			
EQPM	Jonar Rodrigo	Chief	Sarah Rietz/Rebecca Lang/Dave Dukart(V)		
Communications Unit	Chris Perry	Time Unit	Cara Scott(V)		
COMT	Mike Greene/Vinny Pugliese	Equipment Time	Tracy Falls/Amy Van Atta(T)/Ryan Kirtland(T)		
Medical Unit	Brandon Bennewate/Matt Caffey(T)	Procurement Unit			
Food Unit Leader	Mikeal Gates/Ronnie Gilman(T)	Comp/Claims Unit	Debra McClure		
Security	Grant Grisedale	Cost Unit	Eleanor Molina(T)		
Prepared By: Name:	Steve Anderson	Position/Title:	PSC2	Signature:	
ICS 203		Date/Time:	9/30/2023 2300 hours		



Fire Weather Forecast



FORECAST NO: 44
 PREDICTION FOR: Sunday-Monday
 DATE: October 1, 2023
 FORECAST ISSUED: 1900 September 30, 2023

FIRE: Smith River Complex South
 UNIT: CA-SRF-968
 IMET: Matt Mehle (831-200-4107)
 SIGNED: *Matt Mehle*

*****Breezy Northeast Winds with Drier Conditions this Weekend*****

WEATHER DISCUSSION: * Valley elevations = 400-1200ft (Gasquet), Ridgetop elevations = 3500 ft (Camp Six) *
 Drier offshore flow will be the main weather highlight over the next two days. Temperatures will warm a few degrees each day as relative humidities gradually decrease. Northeasterly flow will be strongest during the evening and early nighttime hours the next two days. Winds will ease each afternoon, but still remain breezy to gusty at times.

SUNDAY:

WEATHER: Patchy morning fog possible. Mostly sunny in the afternoon.

MAX TEMP:	Valleys: 65-70°F (3 ↑)	MIN RH:	Valleys: 35-45% (5 ↓)
	Ridgetops: 59-64°F (3 ↑)		Ridgetops: 40-50% (15 ↓)
CHC WTG RAIN: 0%	LAL: 1	SFC VIS: 4 miles in the morning increasing to 6+ miles.	

WINDS: **Valleys:** Northeast 6-12 with gusts to 25 mph.
(20 feet) **Ridgetops:** Northeast 8-15 with gusts to 30 mph.

MIXING HEIGHT: Rising to 4,500 ft MSL by 1300 PDT. **TRANSPORT WIND:** Northeast 10-15 mph.

SUNDAY NIGHT:

WEATHER: Mostly clear with patchy valley fog.

MIN TEMP:	Valleys: 45-50° (1-3↑)	MAX RH:	Valleys: 75-85% (10↓)
	Ridgetops: 42-47° (1-3↑)		Ridgetops: 75-85% (10↓)
CHC WTG RAIN: 0%	LAL: 1	SFC VIS: 5 miles...locally less than 3 in valleys with fog.	

WINDS: **Valleys:** Northeast 5-10. Gusts to 20 mph in the evening.
(20 feet) **Ridgetops:** Northeast 6-12 with gusts to 25 mph in the evening.

INVERSION: Inversion height around 800 ft MSL by 2000 PDT. **TRANSPORT WIND:** Northeast 10-15 mph.

MONDAY:

WEATHER: Patchy morning fog possible. Mostly sunny in the afternoon.

MAX TEMP:	Valleys: 69-74°F (3 ↑)	MIN RH:	Valleys: 35-45% (5 ↓)
	Ridgetops: 61-67°F (3 ↑)		Ridgetops: 40-50% (5 ↓)
CHC WTG RAIN: 0%	LAL: 1	SFC VIS: 4 miles in the morning increasing to 6+ miles.	

WINDS: **Valleys:** Northeast 5-10 with gusts to 15 mph.
(20 feet) **Ridgetops:** Northeast 6-12 with gusts to 20 mph..

MIXING HEIGHT: Rising to 4,500 ft MSL by 1300 PDT. **TRANSPORT WIND:** Northeast 10-15 mph.

EXTENDED OUTLOOK: Offshore flow will keep a warming and drying trend in place for much of the upcoming week.

→ Nearby Weather Observations



Fire Behavior Forecast #44

Name of Incidents: Smith River Complex – South Zone	Administrative Unit: Six Rivers NF – Gasquet District
Date & Time Issued: September 29, 2023 - 1800	Operational Periods: 9/30/23 through 10/4/23
Weather Summary: Seasonal conditions, subtle warming and drying	FBAN: 530-412-2333- cell Linda Ferguson FBAN trainee

Fire Behavior Summary

General – Max. spot dist.: 40 ch. or (0.5 mile) Prob. Ignition: 25% - shaded 40% - unshaded LAL: 1	FUEL MODEL	Back [ROS] Head		Back [FL] Head	
	GS2: Burn scars with moderate dead/down, grass, manzanita brush	0.6 ch/hr	20 ch/hr	0.6'	3.2
	TU5: Very high load mixed conifer and shrubs – heavy forest litter, deep duff, heavy dead/down fuels	0.3 ch/hr	13 ch/hr	1.5'	8'
	TL3/8: Long-needle pine litter, Gambel oak and sparse grass	0.1 ch/hr	1 ch/hr	0.2'	1'

General Fire Behavior from 9/29 through 10/4:
 This forecast is for 5 operational periods and is very generalized. Subtle changes may occur in the fire environment with current forecasts
 Dead and down fuels are quite damp after the rain. Minimal fire behavior is expected. Fuels have been too wet to actively carry fire, but fuels will continue to smolder and may dry out with the north winds predicted. Smoldering will take place in duff layers, root systems, and stump holes. Fuel moistures may change with updated forecasts.

Specifics:

Division R/S/V: Minimal fire behavior, interior smoldering.

Division K: Minimal fire behavior, interior smoldering.

Division L: Minimal fire behavior, interior smoldering.

Division P: Minimal fire behavior, interior smoldering.

09/30 Fuel Moistures:

1hr	11%
10 hr	25%
100 hr	24%
1000 hr	18%

Secondary Fire Effects/Watchouts

Widespread precipitation and moisture will serve as an insulator to stump holes and ash pits. The precipitation will only penetrate the top layer of the ash turning it from white to black. This will give the appearance that the area is cold. However, the top dark layer will hide areas of white ash underneath, which will remain hot. Use appropriate precautions when walking or mopping up.

Safety Message

Watch for fire weakened root systems. Trees with weak root systems can fall with very little wind. As smoke lifts look around your work area again; as overhead hazards may have gone unnoticed over the past week because of the limited visibility and haze. Areas of deep ash may be concealed with darker material. Look up, look down, look around.



SAFETY MESSAGE

Fire fighter safety comes first on every fire, every t

We are **ALL** accountable for **SAFE** behaviors
 For Day Operations: 10/01/23 0700 – 1900

INCIDENT: Smith River Complex	Date Prepared: September 30, 2023 TIME: 1500
--------------------------------------	---

Parking Safely on Slopes

Standard operating procedures for parking vehicles safely on slopes are:

In wildland fire operations, we frequently exit vehicles quickly, but it is imperative that anytime a vehicle is left unattended, time is taken to assure it is parked safely and will not present a hazard to ourselves or others.

- Turn the front wheels uphill or into the inside/embankment.
- Firmly set the emergency brake.
- Put the vehicle in park (if automatic transmission) or in forward gear (if manual transmission); do not leave it in neutral.
- Turn off the engine.
- Chock the wheels. When utilizing chocks, make sure they are on the correct side in reference to the slope. Assure the chocks are approved to hold the weight of the vehicle and will grip on the road surface.
- Be aware of safe parking on slopes during an incident when moving a vehicle frequently. When using engines in pumping operations along a roadway, it is easy to get complacent with procedures. Realize when the vehicle is on a slightly different slope and requires placing chocks differently. It is the driver's responsibility to assure not only that the vehicle is operated safely but is positioned and parked safely.

Reminders: Snag Trees can be killer tree's! Stay clear of snags. If a snag tree can't be mitigated by being putt on the ground, than flag the area and limit folks from entering the kill zone.

Life First

- ✓ Stop
- ✓ Think
- ✓ Talk
- ✓ Act

○ It means that knowing the dangers we face, we still expect that our personnel will not engage unless they can do so with the greatest margin of safety.

○ We expect our emergency responders to refuse assignments where hazards cannot be satisfactorily addressed.

○ We ask people to take risks in fire every day, sending them to work in environments that are known to be hazardous, but we should only do so where the values we have determined threatened justify the risks and the probability of success is high.

○ The way to achieve our goal of zero fatalities is to train, to practice risk management, to think, to communicate, and to foster a learning environment to seek smarter ways to meet our objectives in every situation, and to learn and improve every day.

Thanks, from your Safety Team!!
 Safety Officers: *Mike Seymour SOF2, Jayson Smith SOF2,*

Safety Tips For ATVs/UTVs

- ✓ Load/Unload Correctly
- ✓ Practice Trail Etiquette
- ✓ Properly Tow Cargo
- ✓ Handle Slopes With Care
- ✓ Slow Down After Dark
- ✓ Keep Limbs Close To You
- ✓ Ride Right-Sized Vehicle
- ✓ Wear Safety Gear

"Interagency Standards for Fire and Fire Aviation Operations"

Red Book 2021

All personnel authorized to operate an ATV/UTV must first complete 2 agency specific or manufacturer-provided training in safe operating 3 procedures and appropriate PPE.

Specific authorization for ATV/UTV use is required – All ATV/UTV operations must hold a valid Motor Vehicle Operator's Identification Card, OF-346 or agency equivalent.


Required PPE

UTV Head Protection for Wildland Fire Operations:
 • Helmets must meet DOT, ANSI Z90.1; or Snell SA2010, SA2015 34 certification unless:

www.nifc.gov/sites/default/files/redbook-files/Chapter14.pdf

INCIDENT RISK ANALYSIS

ICS (215A) DAY SHIFT

BR/DV	HAZARDOUS ACTIONS – CONDITIONS	MITIGATIONS – WARNINGS – REMEDIES	
ALL	UTV / ATV	<ul style="list-style-type: none"> • Proper PPE Use while operating. • Operating with proper training and license • Reduce operating speed during reduced visibility. • Pre-inspection before hauling / towing. • Chalk trailer when not in use • Proper trail etiquette • Balance and secure loads properly. • Do not exceed passenger capability. • Use spotter when loading and unloading on trailer. • Evaluate driving conditions and driver capabilities on uneven terrain. 	
ALL	TRAFFIC HAZARDS AND DRIVING	<ul style="list-style-type: none"> • Take extra precautions when entering or exiting the roadways. • Maintain high visibility when in the operational area and use warning lights when working on roads or traveling in smoke. • Many roads are narrow and mid-slope, with soft shoulders. Allow heavy vehicles to pass on the uphill side. Use spotters when backing or turning around. • Keep your speed down in all areas. Drive at or below posted speed limits. • Use warning lights when working on roads or traveling in smoke. • Use chock blocks and turn wheels into hills. 	
ALL	COLD STRESS	<ul style="list-style-type: none"> • Keep extra clothing handy if you get wet and need to change. • Drink warm, sweetened fluids. • Avoid touching cold metal or wet surfaces with bare skin. • Use proper engineering controls, safe work practices, and protective equipment. 	
ALL	PUBLIC INTERACTION	<ul style="list-style-type: none"> • Provide road guards when work hazards affect roadway. • Avoid escalating conflict with public interactions. • Use educational approach during public contact in closed areas. • Use appropriate authorities to enforce closures. • Professional approach to public interaction. 	
ALL	STEEP TERRAIN & ROLLING DEBRIS	<ul style="list-style-type: none"> • Maintain 8'-10' spacing when working & walking. • Do not work above any personnel. • Evaluate the necessity to send personnel into areas with limited access. 	
ALL	HAZARD / DANGER TREES	<ul style="list-style-type: none"> • Follow Hazard Tree Safety Guidelines (IRPG p.22.) • Limit the number of personnel around snags and their exposure time. • Fallers must be qualified for the trees being felled. • Be alert around hazard trees during wind events, even green trees. • The hazard zone extends a minimum of 2½ tree lengths. • Avoid parking vehicles or taking breaks under or near hazard trees. 	
ALL	FATIGUE AND COMPLACENCY	<ul style="list-style-type: none"> • Be alert, and monitor all resources for signs of fatigue, and take breaks as necessary. • Maintain a 2:1 Work to rest ratio. • Repeated assignments in the same area can lead to complacency, making personnel more vulnerable to accidents. • Take steps to maintain situational awareness for the duration of the incident. • Take tactical pauses as practical and feasible. 	
ALL	HEAVY EQUIPMENT OPERATIONS	<ul style="list-style-type: none"> • Ensure communications are established with operators. • Use hand signals if other communications are unavailable. • Maintain a 50'-100' exclusion area around equipment. • Use road guards as needed to control traffic. 	
ALL	MENTAL WELL-BEING	<ul style="list-style-type: none"> • Prioritize sleep and eat a healthy diet. • Include your family and friends. Call home and initiate social connections. • Monitor resources and engage in healthy activities. • Focus on positivity and engage in self-care. 	
ALL	MOP-UP	<ul style="list-style-type: none"> • Balance the risk of exposure to hazards against the mop-up objective. • Evaluate areas for hazard trees and locate stump holes for avoidance. • Monitor fatigue; shorten shifts to increase rest where appropriate. • Review and follow "Look Up, Look Down, Look Around" procedures. • Evaluate mop-up distances against what is safe and necessary. 	
<p>INCIDENT NAME:</p> <p>SMITH RIVER COMPLEX SOUTH</p>		<p>OPERATIONAL PERIOD: 0700 – 0700</p> <p>October 1, 2023</p> <p>Date/Time Prepared: 09/30/2023 – 1500</p>	

ASSIGNMENT LIST (ICS 204 WF)

CONTROLLED UNCLASSIFIED
INFORMATION//BASIC

1. Incident Name: SMITH RIVER COMPLEX SOUTH	2. Operational Period: Date From: 10/01/23 Date To: 10/02/23 Time From: 0700 Time To: 0700	3. Branch Division V R/SV
--	---	--

4. Operations Personnel:		Page 1 of 1
Operations Section Chief: John Owings/John Chester(T)	Night Ops:	
Branch Director: Rob Szczepanek/Rob DeCamp(T)	Branch Safety:	
Division/Group Supervisor: Andres Luna/Steve Rushing(T)	Air Attack:	

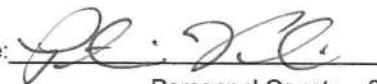
5. Resources Assigned:		** Resources Below in Bold are 12 Hour **					
Resource Identifier	ALS	LWD	Leader	Personnel	Request #	Hours	Reporting Location
* ENG3 STF 343		10/2	GREEN, PAT	5	E-648	0700-1900	GASQUET CAMP
ENG3 INF 341		10/1	BAILEY, TORRE	5	E-672	0700-1900	GASQUET CAMP
* ENG3 STF 342		10/2	FRANKLIN, JUSTIN	5	E-690	0700-1900	GASQUET CAMP
* WTS1 OILER 341		10/17	OILER, JILL	1	E-341	0700-1900	GASQUET CAMP
CHIP2 GOD AND COUNTRY		10/12	KNOTT, ALEX	2	E-737	0700-1900	GASQUET CAMP
RAM REMS	X	10/12	WASELESKI, NICK	4	E-309	0700-1900	GASQUET CAMP
ROUGH COUNTRY UTV2	X	10/15	SIGGINS, MATT	2	E-543	0700-1900	GASQUET CAMP
EMPF BULMER	X	10/9	BULMER, EUAN	1	O-1133	0700-1900	GASQUET CAMP
EMPF FISCHER	X	10/9	FISCHER, SILAS	1	O-1134	0700-1900	GASQUET CAMP
AMBO 6		10/5	SWABODA, JARED	2	E-561	0700-1900	GASQUET CAMP
SOFR(T) LEIGH-ANNE ORR		10/1	ORR, LEIGH-ANNE	1	O-955	0700-1900	GASQUET CAMP

6. Work Assignments:
 Patrol and mop up to the extent necessary from DP9-DP80.
 Identify hazard trees along 17N40 road, dozer lines, and hand lines to implement mitigation measures.
 Patrol along Hwy 199 and respond to service calls for smoke reports and mop up to the extent necessary.
 Patrol and mop up handline from the 17N40 road to Craigs Creek.

7. Special Instructions:
 Resources denoted with * is identified as I/A resources within the TFR.
 REAFs need to check in and out with DIVS.
 Backhaul trash and excess supplies to Gasquet and update Field Maps from any removed accountable property.
 Be strategically and tactically prepared for changing environmental conditions.
 Ensure escape routes to staging areas or safety zones will not be compromised by mud slides or debris flows.

8. Communications

Name	Ch	Function	Rx Freq	Rx Tone	Tx Freq	Tx Tone	Mode	Notes
NIFC C55	5	COMMAND	173.8375	(T3) 131.8	165.5125	(T3) 131.8	A	RC DIP all rpt. linked to ICP
NIFC T5	10	TACTICAL	166.7750	(T3) 131.8	166.7750	(T3) 131.8	A	
A/G TAC	14	A/G TAC	169.4875	0.0	169.4875	0.0	A	
CALCORD	15	TACTICAL	156.0750	(T6) 156.7	156.0750	(T6) 156.7	A	EMS AIR COORDINATOR
AIRGUARD	16	AIRGUARD	168.6250	0.0	168.6250	(T1) 110.9	A	EMERGENCY USE ONLY

9. Prepared by: Name: Mike Yeun RESL
 Signature: 

ICS 204 Date/Time: 9/30/2023 2200 Personnel Count: 29

ASSIGNMENT LIST (ICS 204 WF)

CONTROLLED UNCLASSIFIED
INFORMATION//BASIC

1. Incident Name: SMITH RIVER COMPLEX SOUTH	2. Operational Period: Date From: 10/01/23 Date To: 10/02/23 Time From: 0700 Time To: 0700	3. Branch Division V Gasquet Repair
4. Operations Personnel:		Page 1 of 1

Operations Section Chief: John Owings/John Chester(T)	Night Ops:
Branch Director: Rob Szczepanek/Rob DeCamp(T)	Branch Safety:
Division/Group Supervisor: Ryan Aeby	Air Attack:

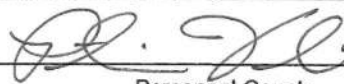
5. Resources Assigned:	** Resources Below in Bold are 12 Hour **							
Resource Identifier	ALS	LWD	Leader	Personnel	Request #	Hours	Reporting Location	
CRW2IA FIRESTORM		10/9	SPRAGUE, CHRIS	18	C-129	0700-1900	GASQUET CAMP	
* CRW2IA NAVAJO SCOUTS 1		10/8	BILLIE, BRIAN	20	C-130	0700-1900	GASQUET CAMP	
ENG6 RX FIRE		10/3	GLICK, JONAS	3	E-152	0700-1900	GASQUET CAMP	
* ENG6 MIS E2261		10/3	KLETTE, RYAN	3	E-691	0700-1900	GASQUET CAMP	
WTS2 DARRAH 705		10/11	BROWNE, RODNEY	1	E-705	0700-1900	GASQUET CAMP	
* DOZ2 JUNGWORTH 171		10/14	BROWN, PETER	2	E-171	0700-1900	GASQUET CAMP	
DOZ2 SMOKY MOUNTAIN		10/9	TOMLINSON, BRIGGS	2	E-173	0700-1900	GASQUET CAMP	
EXCA2 LONESTAR		10/6	JOHNSON, CHRISTIAN	2	E-299	0700-1900	GASQUET CAMP	
EXCA2 SMOKY MOUNTAIN		10/13	TOMLINSON, IKE	2	E-301	0700-1900	GASQUET CAMP	
EXCA2 DARRAH 1		10/10	KINDLEY, COLE	2	E-702	0700-1900	GASQUET CAMP	
EXCA2 DARRAH 2		10/12	WATERMAN, TIM	2	E-728	0700-1900	GASQUET CAMP	
CHIP2 CECIL LOG 434		10/8	MCDONALD, PATRICK	3	E-434	0700-1900	GASQUET CAMP	
TFLD BRONK		10/7	BRONK, JOEL	1	O-1051	0700-1900	GASQUET CAMP	
TFLD WILLARDSON		10/14	WILLARDSON, MICHAEL	1	O-1129	0700-1900	GASQUET CAMP	
TFLD(T) ITHURBURN		10/8	ITHURBURN, PAUL	1	O-1068	0700-1900	GASQUET CAMP	
CONSUMNES REMS 7		10/11	CHERNYY, YURIY	4	O-1095	0700-1900	GASQUET CAMP	
EMPF SPELLMAN	X	10/12	SPELLMAN, RON	1	O-1135	0700-1900	GASQUET CAMP	
EMTF DEVINCENZI		10/9	DEVINCENZI, STEVEN	1	O-1143	0700-1900	GASQUET CAMP	
SOFR HUTCHINSON		10/12	HUTCHINSON, MATTHEW	1	O-1092	0700-1900	GASQUET CAMP	
SOFR(T) LUCERO		10/13	LUCERO, RICK	1	O-1108	0700-1900	GASQUET CAMP	

6. Work Assignments:
Continue suppression repair according to repair plan between Hwy 199 to Branch V/XX break.
Continue to evaluate and assess suppression repair needs.

7. Special Instructions:
Resources denoted with * is identified as I/A resources within the TFR.
REAFs need to check in and out with DIVS.
Backhaul trash and excess supplies to Gasquet and update Field Maps from any removed accountable property.
Be strategically and tactically prepared for changing environmental conditions.
Ensure escape routes to staging areas or safety zones will not be compromised by mud slides or debris flows.

8. Communications

Name	Ch	Function	Rx Freq	Rx Tone	Tx Freq	Tx Tone	Mode	Notes
NIFC C3	1	COMMAND	170.4250	(T3) 131.8	168.0750	(T3) 131.8	A	CAMP 6 all rpt. linked to ICP
NIFC T6	11	TACTICAL	168.2500	(T3) 131.8	168.2500	(T3) 131.8	A	
A/G TAC	14	A/G TAC	169.4875	0.0	169.4875	0.0	A	
CALCORD	15	TACTICAL	156.0750	(T6) 156.7	156.0750	(T6) 156.7	A	EMS AIR COORDINATOR
AIRGUARD	16	AIRGUARD	168.6250	0.0	168.6250	(T1) 110.9	A	EMERGENCY USE ONLY

9. Prepared by: Name: Mike Yeun RESL
Signature: 

ICS 204 Date/Time: 9/30/2023 2200 Personnel Count: 69

ASSIGNMENT LIST (ICS 204 WF)

CONTROLLED UNCLASSIFIED
INFORMATION//BASIC

1. Incident Name: SMITH RIVER COMPLEX SOUTH	2. Operational Period: Date From: 10/01/23 Date To: 10/02/23 Time From: 0700 Time To: 0700	3. Branch Division XX K/L
--	---	--

4. Operations Personnel:		Page 1 of 1
Operations Section Chief: John Owings/John Chester(T)	Night Ops:	
Branch Director: Joe Tieso/Ken Van Wig(T)	Branch Safety:	
Division/Group Supervisor: Derek Sams/Mark Smith(T)	Air Attack:	

5. Resources Assigned:		** Resources Below in Bold are 12 Hour **					
Resource Identifier	ALS	LWD	Leader	Personnel	Request #	Hours	Reporting Location
ENG3 SUNDANCE FIRE		10/9	CAMPASANO, MICHAEL	3	E-689	0700-1900	GASQUET CAMP
ENG6 MISSOULA RFD		10/3	LAPINSKI, NATHAN	2	E-692	0700-1900	GASQUET CAMP
WTT2 NORTHWEST		10/3	CRAVENER, JAMES	2	E-677	0700-1900	GASQUET CAMP
DOZ2 ADAMS CONST		10/12	ADAMS, STEVE	2	E-733	0700-1900	GASQUET CAMP
DOZ2 ROWBERRY		10/13	ROWBERRY, CALEB	2	E-735	0700-1900	GASQUET CAMP
EXCA2 DAVIS CONST		10/13	PARKER, CHRIS	2	E-736	0700-1900	GASQUET CAMP
EXCA3 THOMAS GRANT		10/11	ELDER, SHANE	2	E-725	0700-1900	GASQUET CAMP
TFLD ROBERT WINKLER		10/1	WINKLER, ROBERT	1	O-993	0700-1900	GASQUET CAMP
TFLD(T) BAKER		10/3	BAKER, FRANK	1	O-1011	0700-1900	GASQUET CAMP
BLACKWOODS REMS 6		10/6	LEFEVER, CHANDLER	4	O-476	0700-1900	GASQUET CAMP
ROUGH COUNTRY UTV1	X	10/7	PEACOCK, MIKE	2	E-544	0700-1900	GASQUET CAMP
EMTF COPPO		10/5	COPPO, JOSEPH	1	O-892	0700-1900	GASQUET CAMP
EMTF MCKINLEY		10/4	MCKINLEY, LANCE	1	O-894	0700-1900	GASQUET CAMP
AMBO 5	X	10/11	BYL, DAVE	2	E-454	0700-1900	GASQUET CAMP
SOFR FULLMER		10/1	FULLMER, DONALD	1	O-951	0700-1900	GASQUET CAMP
SOFR(T) NEASE		10/13	NEASE, MATTHEW	1	O-1106	0700-1900	GASQUET CAMP

6. Work Assignments:
Patrol and mop up to the extent necessary from Branch X/XX break to M/P.
Continue to evaluate and assess opportunities to engage within the Siskiyou Wilderness.

7. Special Instructions:
Resources denoted with * is identified as I/A resources within the TFR.
REAFs need to check in and out with DIVS.
Backhaul trash and excess supplies to Gasquet and update Field Maps from any removed accountable property.
Be strategically and tactically prepared for changing environmental conditions.
Ensure escape routes to staging areas or safety zones will not be compromised by mud slides or debris flows.

8. Communications								
Name	Ch	Function	Rx Freq	Rx Tone	Tx Freq	Tx Tone	Mode	Notes
NIFC C35	3	COMMAND	173.8625	(T3) 131.8	163.8250	(T3) 131.8	A	SHIP LOOKOUT all rpt. linked to ICP
VFIRE 24	13	TACTICAL	154.2725	(T6) 156.7	154.2725	(T6) 156.7	A	
A/G TAC	14	A/G TAC	169.4875	0.0	169.4875	0.0	A	
CALCORD	15	TACTICAL	156.0750	(T6) 156.7	156.0750	(T6) 156.7	A	EMS AIR COORDINATOR
AIRGUARD	16	AIRGUARD	168.6250	0.0	168.6250	(T1) 110.9	A	EMERGENCY USE ONLY

9. Prepared by: Name:	Mike Yeun	RESL	Signature:
ICS 204	Date/Time: 9/30/2023	2200	Personnel Count: 29

ASSIGNMENT LIST (ICS 204 WF)

CONTROLLED UNCLASSIFIED
INFORMATION//BASIC

1. Incident Name: SMITH RIVER COMPLEX SOUTH	2. Operational Period: Date From: 10/01/23 Date To: 10/02/23 Time From: 0700 Time To: 0700	3. Branch Division XX M/P
4. Operations Personnel:		Page 1 of 1

Operations Section Chief: John Owings/John Chester(T)	Night Ops:
Branch Director: Joe Tieso/Ken Van Wig(T)	Branch Safety:
Division/Group Supervisor: Greg Lowdermilk	Air Attack:

5. Resources Assigned:	** Resources Below in Bold are 12 Hour **							
Resource Identifier	ALS	LWD	Leader	Personnel	Request #	Hours	Reporting Location	
CRW2IA ELK MOUNTAIN		10/11	MARCKS, WILLIAM	22	C-137	0700-1900	STEVEN SPIKE	
ENG3 SRF 341		10/12	BENTON, JASON	5	E-731	0700-1900	STEVEN SPIKE	
DOZ2 LET ER BUCK		10/10	CUMMINGS, TERRY	2	E-707	0700-1900	STEVEN SPIKE	
DOZ2 BRAUN		10/13	WILEY, JOSHUA	2	E-732	0700-1900	STEVEN SPIKE	
DOZ2 T AND S		10/13	ZIMMERMAN, TUCKER	2	E-734	0700-1900	STEVEN SPIKE	
LOG AMERIVE		10/13	LOVELL, CORY	2	E-717	0700-1900	STEVEN SPIKE	
HEQB(T) SOWELL		10/5	SOWELL, WILL	1	O-1015	0700-1900	STEVEN SPIKE	
HEQB MOLINA		10/13	MOLINA, ROBERT	1	O-1125	0700-1900	STEVEN SPIKE	
BLACKWOODS REMS 3		10/14	ENGLUND, DALTON	4	E-311	0700-1900	STEVEN SPIKE	
EMPF WILSON	X	10/4	WILSON, ADAM	1	O-884	0700-1900	STEVEN SPIKE	
EMTF PAHLER		10/4	PAHLER, MICHAEL	1	O-1010	0700-1900	STEVEN SPIKE	
SOFR GOLONDZINIER		10/6	GOLONDZINIER, JAMES	1	O-914	0700-1900	STEVEN SPIKE	
SOFR(T) CAIN		10/13	CAIN, JASON	1	O-1107	0700-1900	STEVEN SPIKE	

6. Work Assignments:
Patrol and mop up to the extent necessary within the Hurdy Gurdy Fire.
Continue to improve containment lines and mitigate hazards.

7. Special Instructions:
Resources denoted with * is identified as I/A resources within the TFR.
REAFs need to check in and out with DIVS.
Backhaul trash and excess supplies to Gasquet and update Field Maps from any removed accountable property.
Be strategically and tactically prepared for changing environmental conditions.
Ensure escape routes to staging areas or safety zones will not be compromised by mud slides or debris flows.


8. Communications


Name	Ch	Function	Rx Freq	Rx Tone	Tx Freq	Tx Tone	Mode	Notes
NIFC C35	3	COMMAND	173.8625	(T3) 131.8	163.8250	(T3) 131.8	A	SHIP LOOKOUT all rpt. linked to ICP
NIFC T4	9	TACTICAL	166.7250	(T3) 131.8	166.7250	(T3) 131.8	A	
A/G TAC	14	A/G TAC	169.4875	0.0	169.4875	0.0	A	
CALCORD	15	TACTICAL	156.0750	(T6) 156.7	156.0750	(T6) 156.7	A	EMS AIR COORDINATOR
AIRGUARD	16	AIRGUARD	168.6250	0.0	168.6250	(T1) 110.9	A	EMERGENCY USE ONLY

9. Prepared by: Name: Mike Yeun	RESL	Signature:
ICS 204	Date/Time: 9/30/2023 2200	Personnel Count: 45

ICS 205 - INCIDENT RADIO COMMUNICATIONS PLAN

CONTROLLED UNCLASSIFIED
INFORMATION//BASIC

1. Incident Name: SMITH RIVER COMPLEX SOUTH Incident Channels		2. Date/Time Prepared Date: 09/30/2023 Time: 1930		3. Operational Period: Date From: 10/01/23 Time From: 0700		Date To: 10/02/23 Time To: 0700			
4. Communications									
Ch#	Function	Name	Assigned To	Rx Freq	Rx Tone	Tx Freq	Tx Tone	Mode	Notes
1	COMMAND	NIFC C3	ALL BRANCHES	170.4250	(T3) 131.8	168.0750	(T3) 131.8	A	CAMP 6 all rpt. linked to ICP
2	COMMAND	NIFC C34	ALL BRANCHES	173.9750	(T3) 131.8	164.8625	(T3) 131.8	A	MONKEY RIDGE all rpt. linked to ICP
3	COMMAND	NIFC C35	ALL BRANCHES	173.8625	(T3) 131.8	163.8250	(T3) 131.8	A	SHIP LOOKOUT all rpt. linked to ICP
4	COMMAND	NIFC C48	ALL BRANCHES	165.4625	(T3) 131.8	162.1750	(T3) 131.8	A	HIGH DIVIDE all rpt. linked to ICP
5	COMMAND	NIFC C55	ALL BRANCHES	173.8375	(T3) 131.8	165.5125	(T3) 131.8	A	RC DIP all rpt. linked to ICP
6	DISPATCH	SRF 12	DISPATCH	172.3750	0.0	164.1750	(T12) 127.3	A	NORTH COAST DISPATCH
7	TACTICAL	NIFC T1	STEVEN REPAIR	168.0500	(T3) 131.8	168.0500	(T3) 131.8	A	
8	TACTICAL	NIFC T3	SMITH REPAIR	168.6000	(T3) 131.8	168.6000	(T3) 131.8	A	
9	TACTICAL	NIFC T4	DIV M/P	166.7250	(T3) 131.8	166.7250	(T3) 131.8	A	
10	TACTICAL	NIFC T5	DIV R/S/V	166.7750	(T3) 131.8	166.7750	(T3) 131.8	A	
11	TACTICAL	NIFC T6	GASQUET REPAIR	168.2500	(T3) 131.8	168.2500	(T3) 131.8	A	
12	TACTICAL	VFIRE 22	UNASSIGNED	154.2650	(T6) 156.7	154.2650	(T6) 156.7	A	
13	TACTICAL	VFIRE 24	DIV K/L	154.2725	(T6) 156.7	154.2725	(T6) 156.7	A	
14	A/G TAC	A/G TAC	ALL BRANCHES	169.4875	0.0	169.4875	0.0	A	
15	TACTICAL	CALCORD	ALL DIVS	156.0750	(T6) 156.7	156.0750	(T6) 156.7	A	EMS AIR COORDINATOR
16	AIRGUARD	AIRGUARD	ALL DIVS	168.6250	0.0	168.6250	(T1) 110.9	A	EMERGENCY USE ONLY
17									
18									
19									
20	AIRGUARD	AIRGUARD	EMERGENCY	168.6250	0.0	168.6250	(T1) 110.9	A	
5. Special Instructions									
COMMUNICATION PHONE # 510 507-5906									
6. Prepared by (Communications Unit Leader): Name: Chris Perry				NIMS IAP		Signature: 		Date/Time: 09/30/23 1930	
ICS 205 - CONTROLLED UNCLASSIFIED INFORMATION//BASIC									

1. Incident Name: SMITH RIVER IA Page 2		2. Date/Time Prepared Date: 09/30/2023 Time: 1930		3. Operational Period: Date From: 10/01/23 Time From: 0700		Date To: 10/02/23 Time To: 0700			
4. Communications									
Ch#	Function	Name	Assigned To	Rx Freq	Rx Tone	Tx Freq	Tx Tone	Mode	Notes
1	DISPATCH	SRF 12	DISPATCH	172.3750	0.0	164.1750	(T12) 127.3	A	GORDON MOUNTAIN
2	DISPATCH	SRF 4	DISPATCH	172.3750	0.0	164.1750	(T4) 136.5	A	SHIP MOUNTAIN
3	DISPATCH	SRF 1	DISPATCH	172.3750	0.0	164.1750	(T1) 110.9	A	MONKEY RIDGE
4	DISPATCH	HUU RPT	FORTUNA	151.2500	(T1) 110.9	159.4050	(T14) 151.4	A	FORTUNA
5	TACTICAL	NIFC T2	TACTICAL	168.2000	0.0	168.2000	0.0	A	I/A SURGE
6	TACTICAL	R5 T4	TACTICAL	166.5500	0.0	166.5500	0.0	A	
7	TACTICAL	R5 T5	TACTICAL	167.1125	0.0	167.1125	0.0	A	
8	TACTICAL	R5 PROJ	TACTICAL	168.6625	0.0	168.6625	0.0	A	
9	TACTICAL	VTAC 14	TACTICAL	159.4725	(T6) 156.7	159.4725	(T6) 156.7	A	
10	TACTICAL	CDF T3	TACTICAL	151.1750	(T16) 192.8	151.1750	(T16) 192.8	A	
11	TACTICAL	R5 T6	TACTICAL	168.2375	0.0	168.2375	0.0	A	
12	TACTICAL	LOCAL	GASQUET VFD	154.4150	0.0	154.4150	(T16) 192.8	A	GASQUET VFD
13	A/G	A/G-43	PRIMARY A/G	167.6000	0.0	167.6000	0.0	A	PRIMARY A/G
14	A/G	A/G-08	SECONDARY A/G	166.8750	0.0	166.8750	0.0	A	SECONDARY A/G
15	TACTICAL	CALCORD	ALL DIVS	156.0750	(T6) 156.7	156.0750	(T6) 156.7	A	EMS AIR COORDINATOR
16	AIRGUARD	AIRGUARD	EMERGENCY	168.6250	0.0	168.6250	(T1) 110.9	A	EMERGENCY USE ONLY
17									
18									
19									
20	AIRGUARD	AIRGUARD	EMERGENCY	168.6250	0.0	168.6250	(T1) 110.9	A	
5. Special Instructions									
6. Prepared by (Communications Unit Leader): Name: Chris Perry			Signature: 		Date/Time: 09/30/23		1930		
ICS 205 - CONTROLLED UNCLASSIFIED INFORMATION//BASIC								NIMS IAP	

AIR OPERATIONS SUMMARY ICS-220

Incident Name / Number		Sunrise		Cutoff		Sunset	
SMITH RIVER COMPLEX - CA-SRF-000968		7:11		18:30		18:56	
<p>General Remarks, Safety Notes, Hazards, Air Operations Special Equipment, etc. TRACK ALL DIPSITE LOCATIONS / NUMBER OF DIPS / GALLONS TAKEN. TRACK ALL DROP LOCATIONS / NUMBER OF DROPS / GALLONS DROPPED. COLLECT ALL GPS DATA IN DEGREES, MINUTES, DECIMAL MINUTES, FORMAT.</p> <p><i>AVOID aerial application of retardant / foam / agent within 300' of waterways, bodies of water, etc. If retardant / foam / agent is dropped within these areas, immediately notify the AOB/D and provide the following information: Lat / long, estimated number of gallons and a map detailing the area.</i></p> <p>Record % Buckets Dropped in Cost Summaries Notes: % Fed and % Private</p>							
Time Prepared				Date Prepared			
15:00				Saturday, September 30, 2023			
Shutdown				Operational Period - Date			
19:26				Sunday, October 1, 2023			
Helibase Information				TFR Information			
Name Cave				Request # A-160			
Latitude 42.06.250				Altitude: 10,000' MSL			
Longitude 123.40.916				Centerpoint: Multi Lat			
				NOTAMS: 3/0449			
				Frequency 126.0750			
				http://tfr.faa.gov/tfr2/list.html			

Command-South (Linked)	TX	Tone	RX	Tone	AM / FM	Position	Name	Phone	Trainee/Helibase	Phone
	See South 205				FM	SOUTH AOB/D	Kyle Beinschroth	760-617-9493		
AIR / GROUND - TACTICAL	169.4875	0.0000	169.4875	0.0000	FM	SOUTH ASGS				
AIR/AIR ROTARY WING	123.7250	0.0000	123.7250	0.0000	AM					
TFR	126.0750	0.0000	126.0750	0.0000	AM					
F/W AIR TACTICS	173.7000	0.0000	173.7000	0.0000	FM	ASGS(t)	Tom Rawlings	406-261-1673	Cave Helibase	971-713-0287
						Cave HEBM	Cami Roy	907-750-8620	Cave Email	ivhb2023@gmail.com
						HEBM (T)	Steve Rodgers	307-277-1239		
TOLC	168.1375	0.0000	168.1375	0.0000	FM					
CALCORD - MEDICAL South	156.0750	156.7 (6)	156.0750	156.7 (6)	FM					
AIRGUARD - Emergency Only	168.6250	110.9 (1)	168.6250	0.0000	FM	UR36	Jacob Shuler	707-672-3187		

SOUTH HELICOPTERS

FAA #	Type	Make/Model	Helibase	Avail	Start	Remarks	FAA #	Type	Make/Model	Helibase	Avail	Start	Remarks
HB-16FH	1	UH-60	Cave	0800	0830	LL BUCKET							
H-510	2	Bell 212	Cave	0800	0830	LL BUCKET							
364TA	3	AS350	Gasquet	0800	0830	LL BUCKET / Recon							
UR36	3	DJI M600	Gasquet	0800	0830	IR/PSD (Shuler Mod.)							
MEDICAL A/C													
TBD	3	MH-65	Humboldt			Coast Guard							
H-902	2	UH1	Kneeland			Cal Fire							
H-14	3	A-Star B3	Redding			CHP							
353SH	3	A-Star B3	Krassel			FS							

NORTH HELICOPTERS

FAA #	Type	Make/Model	Base	Avail	Start	Remarks	FAA #	Type	Make/Model	Base	Avail	Start	Remarks
TBD	1	TBD	RDD	0800	0830	ATGS (RDD) (Pool)	TBD	1	TBD	MFR	0800	0830	ATGS (MFR) (Pool)

FIXED WING (Use Page 2 if Needed)

FINANCE MESSAGE

Fire Name: Smith River Complex
Fire Number: CA-SRF-000968
Accounting Code: P5 QJ6L (0510)
Email: 2023.smithrivercomplex.finance@firenet.gov

Finance Documents Needed upon "Check In" (If Not Already Submitted):

Please email these documents or scan the QR Code below, attach & submit.			
FED Equipment/ Crews: <ul style="list-style-type: none"> Manifest - showing employment type (GS or WG) or AD rates if applicable 	Overhead: <ul style="list-style-type: none"> AD/Casual Hire Form If regular Agency please ensure "GS" or "WG" is written on your first CTR 	Contract Equipment/ Contract Crews: <ul style="list-style-type: none"> Agreement Manifest Resource Order Inspections 	Cooperator: <ul style="list-style-type: none"> Cooperative Agreement Resource Order

When emailing finance:

- Overhead/FED: *subject line:* TIME, Resource #, Resource Name
- Equipment/Cooperator: *subject line:* EQTR, Resource #, Resource Name

Prior to your demob date, please contact Finance *via email* to expedite the demob process. Upon submittal of your final CTR/Shift Tickets, Finance will email you copies of your pay documents for review and signature.



Smith River Complex Incident: Resource Advisor Message

IMPORTANT: Yellow/White Striped flagging 'Equipment Exclusion' indicates resource AVOIDANCE areas.

Cultural and Heritage Resources:

The area you are working in is rich in cultural and heritage resources which may be encountered while fighting fire or during suppression repair. Avoid disturbing cultural or heritage resource if encountered.

- GPS its location and take a photo, do not remove or collect anything. Work with your division to notify a READ for recommendations on how to proceed.
- Some cultural resources present hazardous conditions, such as mining shafts. Be attentive to these potential hazards when working around known mining areas or in rocky areas.
- Known resources may be flagged ahead in work areas.
- Finding of cultural resources should not be reported over the radio.
- Coordinate with READs on all dozer operations to minimize impacts to cultural and heritage sites. Limit dozer operations to pre-existing dozer lines and limit widths to the extent possible.



Port Orford Cedar root disease

Some local drainages are infected with a root disease that spreads via mud and water and kills Port Orford cedar trees. To prevent spreading this disease to uninfected areas, all water tenders and engines will apply bleach to their tanks (1:1000 ratio). **Designated Draft Site Location by Division (setup with Bleach and fish screen)**

- Panther Flat Day Use - Gasquet Structure Grp, Div A
- DP 10 (Gasquet Ranger District) - ALL Divs
- DP85 (Coon Creek) - Div YY

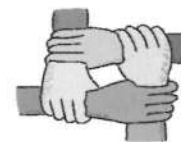


WEED WASH:

The area in and around the Smith River Complex, are home to many sensitive species. Infestations of highly invasive plant species are one of the largest threats to sensitive species populations here. Spread via vehicles and foot traffic as well as re-activation via fire is of high concern. To help protect these sensitive places, do not park in and try to avoid areas flagged areas. **Make sure to visit the WEED WASH 1 mile east Gasquet Base Camp on south side pullout State Highway 199.**



Human Resource Message



Alertness

Alertness is the state of active attention by high sensory awareness such as being watchful and prompt to meet danger or emergency or being quick to perceive and act. It is related to psychology as well as to physiology. The team wants everyone to be mindful of their situation and to make it home safely. If you get tired pull over and take a nap, drink a coffee, and/or sing with the radio.

The Human Resources Specialists are here on assignment to help you and your teams manage the operational stress keeping your crews safe, positive, and productive increasing your situational awareness.

Human Resources Specialist– Tony Torres
505-249-2341 (call/text) or email @ Anthony.Torres@usda.gov

TRAINING MESSAGE

TRAINEES: IF YOU ARE WORKING ON A POSITION TASKBOOK AND HAVE NOT CHECKED IN WITH THE TRAINING SECTION, PLEASE DO SO AS SOON AS POSSIBLE. YOU CAN USE THE QR CODE BELOW FOR REMOTE CHECK IN.

TRAINEES: PLEASE ALLOW TIME BEFORE YOUR DEMOB TO CLOSE OUT WITH TRAINING.

WHEN CLOSING OUT WITH TRAINING, PLEASE BRING YOUR COMPLETED PERFORMANCE EVALUATION (225/226) AND POSITION TASKBOOK WITH COMPLETED TASKBOOK EVALUATOR'S PAGE.

TRAINERS: MAKE SURE PERFORMANCE EVALUATIONS AND TASKBOOK EVALUATOR'S PAGES ARE SIGNED.

JOHN FAKEHANY, TRAINING SPECIALIST





PUBLIC INFORMATION



FIRE INFORMATION

The PIO team maintains a Linktree website with informational links to Inciweb, CalTrans, smoke reports and much more. Please feel free to direct members of the public to our Linktree website using the QR code here.

LOST AND FOUND

Lost something on the incident? Missing your keys or wallet? Stop by the PIO office at Gasquet base camp and check our lost and found!



THINK BEFORE YOU POST



Please have your photos of the incident approved by the PIO team before posting to your personal social media accounts. Contact us with any questions or concerns about approved content.

Direct any public or media inquiries to the Information Center at 707-383-9727 (8 am to 8 pm) or email at 2023.SmithRiverComplex@firenet.gov.

Smith River Complex
(South)

CHECK-IN

1. Scan the QR code and select INITIAL CHECK IN. If returning from R&R use the same QR code but fill out the RETURN FROM R&R link.
2. Submit all required documents to Finance by emailing them to 2023.SmithRiverComplex.Finance@firenet.gov
3. Go find your incident supervisor or attend morning briefing.

E-Mail: 2023.SmithRiverComplex.Checkin@firenet.gov

DEMOB

1. Make sure you are current with your CTR's or Shift Tickets.
2. Stop by the Check-In / Demob trailer to pick up your **221 Demob Sheet**.
3. Visit **Supplies** and **Communication**. Get inspected at **Ground Support**. Get weed washed. If a trainee visit the **Training Specialist**.
4. Finalize time with **Finance**
5. Submit the completed 221 to DEMOB. Safe travels !

If you need a flight home contact DEMOB 72 hours (3 days) before your demob date. Stop by to fill out an Air Travel Request form.

DEMOB questions ? 541 801-3761

Email: 2023.SmithRiverComplex.demob@firenet.gov

SMITH RIVER COMPLEX TENTATIVE DMOB

10/1/2023

CREWS

C-126	0800	CRW1	LASSEN
-------	------	------	--------

EQUIPMENT

E-671	0730	ENG3	CACNF E330
E-676	0700	WTT2	MOAPA VALLEY

OVERHEAD

O-114	0730	MESU	NCF REMS 11
O-874	0715	SPUL	LOPEZ, RAMON
O-916	0745	DIVS	MATTHEWS, B.
O-923	0700	RCDM	LOPEZ, ROY
O-929	0800	DPRO	WALKER, A.
O-984	0815	REAF	RADFORD, S.
O-972	1500	TFLD	VANCE, J.

10/2/2023

CREWS

C-115	0800	CRWC	SHASTA 22
C-130	0700	CR2I	NAVAJO SCOUTS

EQUIPMENT

E-293	0730	DZR2	LEESVILLE
E-672	0800	ENG3	CAINF 341

OVERHEAD

O-860	0745	DIVS	AEBY, R.
O-917	0730	PIOF	SUBE, B.
O-951	0700	SOFR	FULLMER, D.
O-955	0715	SOFR	ORR, L.
O-989	0800	INCM	DRUMRIGHT, A.
O-993	0830	DIVS	WINKLER, R.
O-1069	0815	IMET	MEHLE, M.



Logistics Operating Hours

Caterer at Gasquet base:

Breakfast:	0600 - 0900
Dinner:	1800 - 2100
Shower:	0500 - 1200 then 1400 - 2300
Supply:	0630 - 2100
Laundry:	0500 - 2300
Fuel at Gasquet:	0600 - 1300 then 1500 to 2100
Medical Trailer:	0600 - 2200, (Emergencies 24/7)
Weed Wash:	0700 - 1900

LINE ORDER FORM

<u>ORDER #</u>	<u>DATE & TIME ORDERED</u> Received from the Line	<u>WHO PLACED ORDER</u> DIVS, OPS, etc...	<u>DELIVER to (DIV, Helispot, DP, etc.)</u> Division, Heli-Spot, Drop Point, etc.	<u>MODE of DEVIVERY</u> Drive, Helo, pick-up

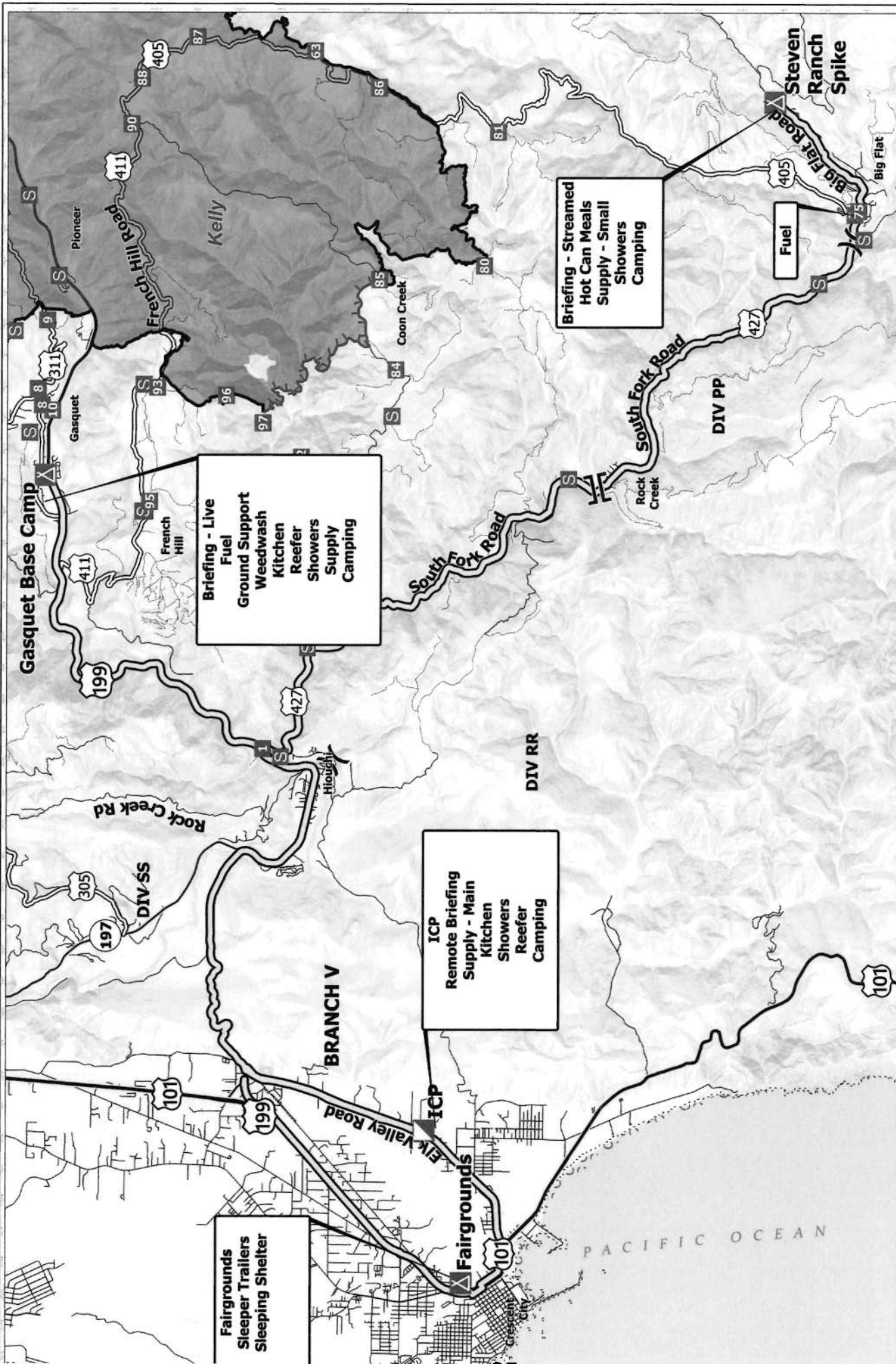
<u>Order Received in Communications By:</u>	<u>TIME:</u>
<u>Communications Relayed/Placed the Order To:</u>	<u>TIME:</u>
<u>Order Shipped to the Line By (Name):</u>	<u>TIME:</u>

<u>ITEM#</u>	<u>DESCRIPTION</u>	<u>AMOUNT</u>
1	1,000 Foot Hose Lay: Includes the following 10 lengths, 1 ½" x 100' Hose. 10 lengths, 1" x 100' Hose. 10ea. 1 ½" Gated Wyes. 10ea. 1 ½" to 1" Reducers. 10ea. 1" Nozzles.	
2	2,000 Foot Hose Lay: Includes the following 20 lengths, 1 ½" x 100' Hose. 20 lengths, 1" x 100' Hose. 20ea. 1 ½" Gated Wyes. 20ea. 1 ½" to 1" Reducers. 20ea. 1" Nozzles.	
3	3,000 Foot Hose Lay: Includes the following 30 lengths, 1 ½" x 100' Hose. 30 lengths, 1" x 100' Hose. 30ea. 1 ½" Gated Wyes. 30ea. 1 ½" to 1" Reducers. 30ea. 1" Nozzles.	

<u>ITEM#</u>	<u>REQUESTED ITEM</u>	<u>NFES#</u>	<u>AMOUNT</u>	<u>ITEM#</u>	<u>REQUESTED ITEM</u>	<u>NFES#</u>	<u>AMOUNT</u>
4	Backpack Pump, 5 gallon	1149		26	Batteries, "AA", (package)	0030	
5	Foam, 5 gallon	1145		27	Gasoline, Unleaded (gallon)		
6	Hose, ¾ inch, 50 ft. length	1016		28	Oil, 2 Cycle Mix (quart)	0341	
7	Hose, 1 inch, 100 ft. length	0966		29	Diesel, straight (gallon)		
8	Hose, 1 ½ inch, 100 ft. length	0967		30	Oil, Bar & Chain (gallon)	1880	
9	Increaser, ¾" to 1"	2235		31	Fusees (box)	0105	
10	Increaser, 1" to 1 ½"	0416		32	Torch, Drip Torch ea.	0241	
11	Nozzle, Garden ¾ inch	0136		33	Mix, Drip Torch 3-1, 5 gal.		
12	Nozzle, Forester, 1"	0024		34	Flagging, Ribbon, Color/Roll		
13	Nozzle, KK Type, 1"	1081		35	Washcloth, Waterless	0206	
14	Nozzle, KK Type, 1 ½"	1082		36	Water, Cubi, 5 gallon ea.	0048	
15	Reducer, 1" to ¾"	0733		37	Water, Bottled, (case)		
16	Reducer, 1 ½" to 1"	0009		38	Sports Drink, Gatorade (case)		
17	Tee, Hoseline, 1"x1"x ¾"	1809		39	Food, MRE's (12 per Box)	1842	
18	Tee, Hoseline, 1"x1"x 1"	2240		40	Pump Kit, High Pressure	0870	
19	Tee, Hoseline, 1 ½" x 1 ½" x 1"	0230		41	Pump, High Pressure	0148	
20	Wye, Gated, ¾" inch	0904		42	Pump Kit, Light Weight	0670	
21	Wye, Gated, 1"	0259		43	Sprinkler Kit	1048	
22	Wye, Gated, 1 ½"	0231		44	Pump Kit, Volume	6041	
23	Tank, Collapsible. Capacity Gallons?			45	Mop-Up Kit	0772	
24	Tank, Folding/Frame. Capacity ??						
25	Wrap, Structure (roll)	0881					

Date and Time Needed: _____ **Point of Contact at Delivery Location:** _____

OTHER / NOTES:



- Routes**
- Interstate
 - Highway
 - Local Connecting Road
 - County Road
- Camp**
- Staging Area
 - Contained
 - Uncontained
 - Smith River Complex Wildfire Perimeter

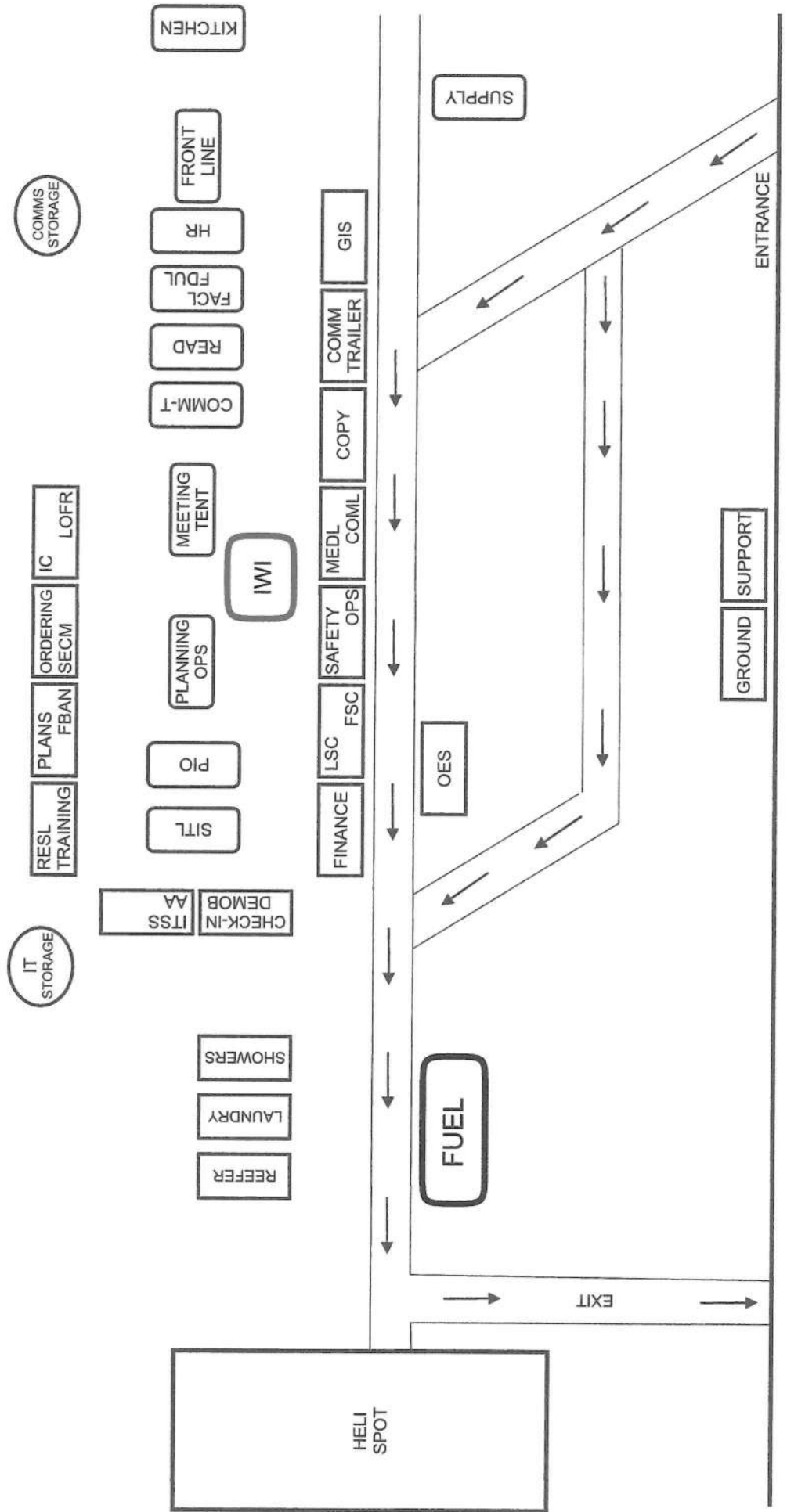
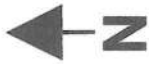
- X Division Break
- II Branch Break
- Incident Command Post
- Drop Point



TRANSPORTATION
 Smith River Complex - South
 CA-SRF-000968

Smith River Incident Base

Gasquet Airport (Ward Field)



1. Incident Name				2. Operational Period							
Smith River Complex – South				Date/Time: 10/1/2023-10/2/2023 (0700-0700)							
3. Incident Medical Aid											
Name		Location		Medical Emergency Contact		ALS Yes No					
Frontline Medical Supply Unit		Gasquet Base Camp		COMMAND		X					
Ambulance 1		Steven Ranch Spike		COMMAND		X					
4. Air Rescue / Air Ambulance Services											
Name		Location / Contact		Type of Aircraft & Capability							
Cal Fire 902		South Smith Comms		Helicopter Type 2 ALS / Day Hoist Only							
CHP H14/H15		South Smith Comms		Helicopter Type 3 ALS / Day Hoist Only							
H-3SH		South Smith Comms from Scott Valley HB		Helicopter Type 3 BLS / Short Haul Only							
Reach 5		South Smith Comms		Helicopter Type 3 ALS / Medevac only / 24hrs							
5. Hospitals (all times estimated from incident location)											
Name & Trauma Level		GPS Datum – WGS 84 Degrees Decimal Minutes		Travel Time (From ICP)		Phone		Helipad Yes No		Address	
				Air	Ground						
Sutter Coast Hospital Level 4		Lat: N 41° 46.423'	W 124° 11.643'	N/A	5 MINS	707-464-8888		X	800 E. Washington Blvd Crescent City, CA 95531		
		Long:									
Asante Rogue Regional Level 2		Lat: N 42° 19.050'	W 122° 49.839'	50 MINS	3.5 HRS	541-789-7000	X		2825 E. Barnett Rd. Medford, OR 97504		
		Long:									
Mercy Medical Center Level 2		Lat: N 40° 34.300'	W 122° 23.754'	65 MINS	4.5 HRS	530-225-7200	X		2175 Rosaline Ave. Redding, CA 96001		
		Long:									
UC Davis Medical Center Level 1 – Burn Center		Lat: N 38° 33.282'	W 121° 27.279'	1.5 HRS	7 HRS	ER Physician Referral ONLY	X		4301 X Street Sacramento, CA 95817		
		Long:									
6. Division / Crew Emergency Pre-Plan								<i>Update and discuss with assigned resources daily.</i>			
Fireline EMT / Medic's Division / Branch Location											
Air Hoist site location site: Lat: / Long: / Elevation:											
Helispot: Lat: / Long: / Elevation: MED LZ:											
7. Prepared By (Medical Unit Leader)				8. Date/Time		9. Reviewed By (Safety Officer)		10. Date/Time			
<i>Gena Fowlkes</i> MEDL				09/30/2023 1800		<i>Mike Seymour</i> SOF2		9/30/2023 1800			

Medical Incident Report

FOR A **NON-EMERGENCY INCIDENT**: WORK THROUGH CHAIN OF COMMAND TO REPORT AND TRANSPORT INJURED PERSONNEL AS NECESSARY.

FOR A **MEDICAL EMERGENCY**: IDENTIFY ON SCENE INCIDENT COMMANDER BY NAME AND POSITION AND ANNOUNCE "MEDICAL EMERGENCY" TO INITIATE RESPONSE FROM COMMUNICATIONS

Use the following items to communicate situation to communications/dispatch.

1. CONTACT COMMUNICATIONS / DISPATCH (Verify correct frequency prior to starting report)

Ex: "Communications, Div. Alpha. Stand-by for Emergency Traffic."

2. INCIDENT STATUS: Provide incident summary (including number of patients) and command structure.

Ex: "Communications, I have a Red priority patient, unconscious, struck by a falling tree.

Requesting air ambulance to Forest Road 1 at (Lat./Long.)

"This will be the Trout Meadow Medical Incident, IC is TFLD Jones. EMT Smith is providing medical care."

Severity of Emergency AND Transport Priority (priority 1, 2, 3)	<input type="checkbox"/> RED / PRIORITY 1 Life or limb threatening injury or illness. Evacuation need is IMMEDIATE <i>Ex: Unconscious, difficulty breathing, bleeding severely, 2° – 3° burns more than 4 palm sizes, heat stroke, disoriented.</i>	
	<input type="checkbox"/> YELLOW / PRIORITY 2 Serious Injury or illness. Evacuation may be DELAYED if necessary. <i>Ex: Significant trauma, unable to walk, 2° – 3° burns not more than 1-3 palm sizes.</i>	
	<input type="checkbox"/> GREEN / PRIORITY 3 Minor Injury or illness. Non-Emergency transport <i>Ex: Sprains, strains, minor heat-related illness.</i>	
Nature of Injury or Illness & Mechanism of Injury		Brief Summary of Injury or Illness (Ex: Unconscious, Struck by Falling Tree)
Transport Request		Air Ambulance / Short Haul/Hoist Ground Ambulance / Other
Patient Location		Descriptive Location & Lat. / Long. (WGS84)
Incident Name		Geographic Name + "Medical" (Ex: Trout Meadow Medical)
On-Scene Incident Commander		Name of on-scene IC of Incident within an Incident (Ex: TFLD Jones)
Crew Patient Care		Name of Care Provider (Ex: EMT Smith)

3. INITIAL PATIENT ASSESSMENT: Complete this section for each patient as applicable (start with the most severe patient)

Patient Assessment: (IRPG PAGE 106) Age: Weight: Chief Complaint:

Skin Signs: (color/moisture/temp) Level of Consciousness: BP: HR: Respirations:

Treatment:

4. TRANSPORT PLAN:

Evacuation Location (drop point, intersection, helispot, Lat. / Long, hazards) Patient's ETA to Location:

5. ADDITIONAL RESOURCES / EQUIPMENT NEEDS:

Paramedic / EMT - Crews - Immobilization Devices - AED - Oxygen - Trauma Bag - IV/Fluid(s) - Splints - Rope rescue - Wheeled litter - HAZMAT - Extrication

6. COMMUNICATIONS: Identify State Air/Ground EMS Frequencies and Hospital Contacts as applicable

Function	Channel Name/Number	Receive (RX)	Tone/NAC *	Transmit (TX)	Tone/NAC *
COMMAND					
AIR-TO-GRND					
TACTICAL					

7. CONTINGENCY: Considerations: If primary options fail, what actions can be implemented in conjunction with primary evacuation method?
Be thinking ahead.

8. ADDITIONAL INFORMATION: Updates/Changes, etc.

REMEMBER: Confirm ETA's of resources ordered. Act according to your level of training
Be Alert - Keep Calm - Think Clearly - Act Decisively

*** Follow up with MEDL upon return to ICP ***