

\* \* \* CORRECTED \* \* \*

# INCIDENT ACTION PLAN SMITH RIVER COMPLEX SOUTH INCIDENT

CA-SRF-000968

P5 QJ6L (0510)



## OPERATIONAL PERIOD

10/10/2023 0700  
to  
10/15/2023 0700

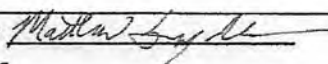


\* \* \* CORRECTED \* \* \*

**INTENTIONALLY LEFT BLANK**



## ORGANIZATION ASSIGNMENT LIST (ICS 203)

<b>1. Incident Name:</b> SMITH RIVER COMPLEX SOUTH		<b>2. Operational Period: Date From:</b> 10/10/2023 Time From: 0700		<b>Date To:</b> 10/15/2023 Time To: 0700	
<b>3. Incident Commander(s) and Command Staff:</b>			<b>7. Operation Section:</b>		
IC/UCs	Tomas Gonzales/Ben Hendricks(T)	Operations	Tony Zavalla		
Safety Officer	Jeff Barnhart	Planning Ops	Jayson Smith		
Information Officer	Lia Parker/Matt Gillotti(T)/Augie Romo(T)	Night Ops			
Liaison Officer	Jerry Martinez	Staging Area			
Human Resources		Branch			
<b>4. Agency/Organization Representatives:</b>		Division/Group	Suppression	Justin Foye	
Agency/Organization	Name	Division/Group	Repair West	Phillip Oosahwe	
SRF Forest Supervisor	Ted McArthur	Division/Group	Repair East	William Almand	
SRF Agency Admin.	K. Allen	Division/Group	Hazard Tree	Aaron Schumacher/Adam Lara(T)	
CAL OES (ESC)	Ryan Wakefield	Division/Group			
CAL Fire	Garrett Dean	Division/Group			
CHP	LT. Pete Roach	Division/Group			
Del Norte Co. OEM	Randy Hooper	Branch			
Crescent City Manager	Eric Wier	Division/Group			
Cal Trans	Paul Johnson	Division/Group			
Del Norte Sheriff LEO	Jon Maxwell	Division/Group			
Crescent City Fire Chief	Kevin Carey	Division/Group			
NPS Superintendent	Steven Mietz	Division/Group			
Bureau of Indian Affairs	Nathan Gogna	Division/Group			
Tolowa Dee-ni' Nation	Rachel McCain	Branch			
Red Cross	Mary Dorman	Division/Group			
Resource Advisor	Donna Peppin	Division/Group			
<b>5. Planning Section:</b>		Division/Group			
Chief	Matt Snyder(T)	Division/Group			
Resource Unit	Ed Morgan	Division/Group			
Situation Unit	Ray Rook	Branch			
Documentation Unit	Sheila Larsen(V)	Division/Group			
Demobilization Unit	Jan Grisedale	Division/Group			
GISS	Dan LaBarre(V)	Division/Group			
IMET	Rich Thompson	Division/Group			
TNSP		Division/Group			
SCKN	Melody Flores/Patrick Volosin(T)/Bill Johnston(T)	Division/Group			
ITSS	Julian Martinez	Division/Group			
<b>6. Logistics Section:</b>		<b>Air Operations Branch</b>		<b>Director:</b> <del>Ray Ucha</del> Demob	
Chief	Scott Ashbach/Nikkie Green(T)	Air Tactical Group Supervisor			
Supply Unit	Matt Berger(T)	Helibase Manager			
Facilities Unit	Art Curley				
Ground Support Unit	Chris Syler				
<b>8. Finance/Administration Section:</b>					
EQPM	Jonar Rodrigo	Chief	Krisandra Kappus(V)/Roger Siemers(T)		
Communications Unit	Chris Perry	Personnel Time	Mary Jane Derendoff/Lili McGary/Paula McQuestion		
COMT	Mike Greene/Vinny Pugliese	Equipment Time	Sherise Foster/Barbara Phegley		
Medical Unit	Jim Emerson/Dan Corban(T)/Zack Wolf(T)	INBA	Derendoff		
Food Unit Leader	Mikeal Gates/Ronnie Gilman(T)	Comp/Claims Unit			
Security	Grant Grisedale	Cost Unit			
<b>Prepared By: Name:</b>	Matt Snyder	<b>Position/Title:</b>	PSC3 (T)	<b>Signature:</b>	
<b>ICS 203</b>		<b>Date/Time:</b>	10/9/2023 2300 hours		



# INCIDENT Weather Forecast

FORECAST NO: 53  
 PREDICTION FOR: Tuesday-Saturday  
 SHIFT DATE: 10/10-10/14  
 FORECAST ISSUED: 10/9/23 @ 1800

NAME OF FIRE: Smith River Complex  
 UNIT: SRF  
 SIGNED: *Rich Thompson*  
 Rich Thompson Incident Meteorologist

**WEATHER DISCUSSION:** Periods of rain are expected through the operational period. The best time periods for rainfall will be this morning then again this evening. Rainfall totals through the operational period are likely to range between 0.50 and 1.00 inches with a 40% chance of totals up to around 1.50 inches. Along with the rain, gusty south to southwest winds are expected.

A lingering threat of light showers is expected on Wednesday. After a dry and slightly warmer day on Thursday, the chances of rain will return Friday through the weekend.

## WEATHER FORECAST:

**WEATHER:** Periods of rain. Heaviest rain is expected this morning with a secondary moderate pulse this evening.

**TEMPERATURES:** Max: 53-58 Valleys...46-53 Ridgetops  
 Min: 42-50

**HUMIDITY:** 80-100%

**20 FT WINDS:**

**RIDGETOP -**  
 0700-0900: South to southwest 10-15 MPH Gust 20-25 MPH  
 0900-1600: South to southwest 12-20 MPH Gust 25-35 MPH  
 1600-2100: Southwest 10-15 MPH Gust 20-25 MPH  
 2100-0700: Southwest to west 6-12 MPH Gust 15-20 MPH

**SLOPE/VALLEY -**  
 0700-1000: South to southwest 5-10 MPH Gust 12-15 MPH  
 1000-1600: South to southwest 6-12 MPH Gust 15-25 MPH  
 1600-2100: Southwest 4-8 MPH Gust 12-15 MPH  
 2100-0700: Variable 4-8 MPH

**OUTLOOK FOR WEDNESDAY:** Mostly cloudy. Scattered showers, tapering off through the day. Highs: 54-59 valleys...47-54 ridgetops. Lows: 40-48. RH: Min 60-75%...Max 85-100%. Ridgetop Winds: west to northwest 6-12 MPH Gust 15 MPH. Slope/Valley Winds: South to southwest 5-10 MPH Gust 12-15 MPH.


## EXTENDED FORECAST (THURSDAY THROUGH SATURDAY):

**THURSDAY:** Mostly clear. Highs: 65-72 valleys...57-65 ridgetops. Lows: 44-52. Min RH: 45-55%. Max RH: 80-100%. 20 Foot Winds: Northeast to east 6-12 MPH Gust 15-25 MPH, becoming southwest to west 6-12 MPH in the afternoon.

**FRIDAY:** Mostly cloudy with rain becoming likely. Highs: 60-67 valleys...52-60 ridgetops. Lows: 46-56. Min RH: 50-70%. Max RH: 80-100%. 20 Foot Winds: South to southwest 6-12 MPH Gust 15-20 MPH.

**SATURDAY:** Mostly cloudy with rain likely. Highs: 58-66 valleys...50-58 ridgetops. Lows: 46-56. Min RH: 65-80%. Max RH: 80-100%. 20 Foot Winds: South to southwest 6-12 MPH Gust 15-25 MPH.

## FIRE BEHAVIOR FORECAST

<b>FORECAST NUMBER:</b> 52	<b>TYPE OF FIRE:</b> Wildfire
<b>FIRE NAME:</b> Smith River Complex – South	<b>OPERATIONAL PERIOD:</b> October 10 - 14, 2023
<b>DATE ISSUED:</b> October 9, 2023	<b>TIME ISSUED:</b> 1800
<b>UNIT:</b> Six Rivers National Forest – Gasquet District	<b>SIGNED:</b>  <b>Typed/printed:</b> Nic Elmquist (FBAN)

### INPUTS

**WEATHER SUMMARY:**                    **\*\*See Fire Weather Forecast\*\***

The stormy weather pattern is forecasted to persist for the foreseeable future, with periodic pulses of heavy rain and gusty winds.

**FUELS SUMMARY:**

Due to below normal precipitation last winter, fuel moisture levels did not fully recover this spring. The shrubs and dead surface fuels were readily available for consumption at the onset of the complex on August 15<sup>th</sup>. The fire danger readings were setting maximum records during this time as well. Over the last month most of the fire area has received over 5" (and counting) of rainfall causing significant spikes in both live and dead fuel moistures. A prolonged period of wet and cool conditions will saturate all fuels making them unavailable to burn.

### OUTPUTS

**FIRE BEHAVIOR**

**GENERAL:**

A season ending event consists of precipitation followed by a persistent pattern of environmental factors that mark the end of the fire season. These factors include pulses of precipitation, lower temperatures, higher humidity, a lower sun angle, and shorter days. Looking at historical data, the likelihood of this area being under season ending conditions by October 10<sup>th</sup> is over 95%. Given the hard work over the last several months by fire resources and the current and expected weather conditions, there will be little fire behavior across the Smith River Complex.

**Fire Danger Indices – 2022 IRPG Page 39**

Energy Release Component (ERC): 0 -10<sup>th</sup>

October Average ERC Percentile: 50<sup>th</sup>

Maximum Spotting Distance: None

**Peak Burn Period (1300 – 1600) - Probability of Ignition (PIG): 0 - 10% (unshaded)**

**SPECIFIC:**

**Branch V and XX:** The wet weather pattern that has arrived over the incident will assist in extinguishing the few remaining hotspots across the fires. This weather pattern is forecasted to persist for an extended period. Given the time of year and the current and extended weather pattern, very little fire activity is expected for the duration of the incident. Any fire activity will be limited to smoldering stump holes and other ground fuels sheltered from the rain.

**AIR OPERATIONS:**

Sunrise 0654, Last Light 1914 (Daylength: losing 2 min, 46 sec each day)

Stormy conditions, including poor visibility and gusty winds will keep the potential to utilize aircraft limited for the next several operational periods.

### SAFETY

The additional rainfall will cause the ground to become saturated. Periods of strong winds are going to cause large trees and boulders to come down the hill. Limit your time in and around the timber and steep slopes during periods of rain and high winds.

## HEALTH AND SAFETY MESSAGE

*SAFETY* starts with *YOU*

We are ALL accountable for SAFE behaviors

October 10 - 14, 2023

INCIDENT: Smith River Complex South

Operational Period: 0700-0700

### Steep Terrain and Remote location

- Helicopter rescue may be limited due to wind or weather
- Pre-plan an alternate rescue option for your work area
- Review Medical Plan and Communications Protocol
- Evaluate Risk versus Benefit of working in high risk areas

### Are you ready for the rain?

Have you checked your vehicle to make sure it is ready to drive in the rain?

Do you have the appropriate gear if you are working in the rain?

### Working with Heavy Equipment

- Establish visual and radio communication prior to engaging
- No one but the operator should ride on the equipment
- Refer to the Working With Heavy Equipment section on page 85 of the IRPG

### Hazard Trees

- Be Aware of Snags and Green Tree Hazards
- Identify, Flag, Avoid and Communicate to others
- Mitigate with Qualified Personnel


### The five step process that provides firefighters with a simple, universal, and consistent way to practice risk management

- 1) Establish situation awareness
- 2) Identify hazard and assess the risk
- 3) Control or eliminate hazards
- 4) Make decision based on the acceptability of the remaining risk
- 5) Evaluate the effectiveness of hazard controls and continuously re-evaluate the situation

**INCIDENT RISK ANALYSIS**

**ICS (215A) DAY SHIFT**

BR/DV	HAZARDOUS ACTIONS – CONDITIONS	MITIGATIONS – WARNINGS – REMEDIES
ALL	WEATHER / THUNDERSTORM SAFETY	<ul style="list-style-type: none"> <li>• Take weather throughout the shift to get timely and accurate information.</li> <li>• Is what we predicted what you are observing?</li> <li>• Request spot weather forecasts if you notice a notable change in the weather.</li> <li>• Communicate any changes in weather with your crew and adjacent resources.</li> <li>• Take shelter in a vehicle or building if possible.</li> <li>• If outdoors, find a low spot away from tall trees. If in the woods, move to an area with shorter trees.</li> <li>• If in open country, crouch low with feet together and minimize contact with the ground.</li> <li>• Don't stay on ridge tops or in wide open areas.</li> <li>• Get to hard packed roads during rain events.</li> <li>• Follow Thunderstorm Safety in your IRPG (pg. 17).</li> </ul>
ALL	TRAFFIC HAZARDS AND DRIVING	<ul style="list-style-type: none"> <li>• Take extra precautions when entering or exiting the roadways.</li> <li>• Maintain high visibility when in the operational area and use warning lights when working on roads or traveling in smoke.</li> <li>• Many roads are narrow and mid-slope, with soft shoulders. Allow heavy vehicles to pass on the uphill side. Use spotters when backing or turning around.</li> <li>• Keep your speed down in all areas. Drive at or below posted speed limits.</li> <li>• Use warning lights when working on roads or traveling in smoke.</li> <li>• Use chock blocks and turn wheels into hills.</li> </ul>
ALL	COLD STRESS	<ul style="list-style-type: none"> <li>• Keep extra clothing handy if you get wet and need to change.</li> <li>• Drink warm, sweetened fluids.</li> <li>• Avoid touching cold metal or wet surfaces with bare skin.</li> <li>• Use proper engineering controls, safe work practices, and protective equipment.</li> </ul>
ALL	DEBRIS FLOW / MUDSLIDES	<ul style="list-style-type: none"> <li>• Never underestimate a debris flow or mudslide.</li> <li>• Never attempt to cross a debris flow.</li> <li>• Pay attention to weather forecasts for the burn area.</li> <li>• Know the warning signs (listen and watch for rushing water, mud, unusual sounds.</li> <li>• Have an evacuation/escape route planned that is least likely to be impacted by flash flooding.</li> </ul>
ALL	STEEP TERRAIN & ROLLING DEBRIS	<ul style="list-style-type: none"> <li>• Maintain 8'-10' spacing when working &amp; walking.</li> <li>• Do not work above any personnel.</li> <li>• Evaluate the necessity to send personnel into areas with limited access.</li> </ul>
ALL	HAZARD / DANGER TREES	<ul style="list-style-type: none"> <li>• Follow Hazard Tree Safety Guidelines (IRPG p.22.)</li> <li>• Limit the number of personnel around snags and their exposure time.</li> <li>• Fallers must be qualified for the trees being felled.</li> <li>• Be alert around hazard trees during wind events, even green trees.</li> <li>• The hazard zone extends a minimum of 2½ tree lengths.</li> <li>• Avoid parking vehicles or taking breaks under or near hazard trees.</li> </ul>
ALL	FATIGUE AND COMPLACENCY	<ul style="list-style-type: none"> <li>• Be alert, and monitor all resources for signs of fatigue, and take breaks as necessary.</li> <li>• Maintain a 2:1 Work to rest ratio.</li> <li>• Repeated assignments in the same area can lead to complacency, making personnel more vulnerable to accidents.</li> <li>• Take steps to maintain situational awareness for the duration of the incident.</li> <li>• Take tactical pauses as practical and feasible.</li> </ul>
ALL	HEAVY EQUIPMENT OPERATIONS	<ul style="list-style-type: none"> <li>• Ensure communications are established with operators.</li> <li>• Use hand signals if other communications are unavailable.</li> <li>• Maintain a 50'-100' exclusion area around equipment.</li> <li>• Use road guards as needed to control traffic.</li> </ul>
ALL	MENTAL WELL-BEING	<ul style="list-style-type: none"> <li>• Prioritize sleep and eat a healthy diet.</li> <li>• Include your family and friends. Call home and initiate social connections.</li> <li>• Monitor resources and engage in healthy activities.</li> <li>• Focus on positivity and engage in self-care.</li> </ul>
ALL	MOP-UP	<ul style="list-style-type: none"> <li>• Balance the risk of exposure to hazards against the mop-up objective.</li> <li>• Evaluate areas for hazard trees and locate stump holes for avoidance.</li> <li>• Monitor fatigue; shorten shifts to increase rest where appropriate.</li> <li>• Review and follow "Look Up, Look Down, Look Around" procedures.</li> <li>• Evaluate mop-up distances against what is safe and necessary.</li> </ul>

<p><b>INCIDENT NAME:</b></p> <p><b>SMITH RIVER COMPLEX SOUTH</b></p>	<p><b>OPERATIONAL PERIOD: 0700 – 0700</b></p> <p><b>October 10-15, 2023</b></p> <p>Date/Time Prepared: 10/09/2023 – 1500</p>	
--	--	---





# ASSIGNMENT LIST (ICS 204 WF)

CONTROLLED UNCLASSIFIED  
INFORMATION/BASIC

<b>1. Incident Name:</b> <b>SMITH RIVER COMPLEX SOUTH</b>	<b>2. Operational Period:</b> Date From: 10/10/23    Date To: 10/15/23 Time From: 0700    Time To: 0700	<b>3. Branch</b> <b>Division</b>  <b>Repair West</b>
--	---	--

<b>4. Operations Personnel:</b>		Page 1 of 1
Operations Section Chief: <b>Tony Zavalla</b> Branch Director: Division/Group Supervisor: <b>Phillip Oosahwe</b>	Night Ops: Branch Safety: Air Attack:	

5. Resources Assigned:		** Resources Below in Bold are 12 Hour **					
Resource Identifier	ALS	LWD	Leader	Personnel	Request #	Hours	Reporting Location
<b>*CRW2 NW UMF#4</b>		10/16	<b>MITCHELL, CASEY</b>	19	<b>C-144</b>	<b>0700-1900</b>	<b>GASQUET CAMP</b>
<b>CRW2 RJT CONTRACTING</b>		10/17	<b>MARTINEZ, MARCO</b>	20	<b>C-145</b>	<b>0700-1900</b>	<b>GASQUET CAMP</b>
<b>EXC2 BUSHEY FARMS</b>		10/17	<b>BUSHEY, ANDREW</b>	2	<b>E-762</b>	<b>0700-1900</b>	<b>GASQUET CAMP</b>
<b>EXC2 MCFADDEN CONSTR</b>		10/18	<b>MORELAND TYSON</b>	1	<b>E-769</b>	<b>0700-1900</b>	<b>GASQUET CAMP</b>
<b>HEQB VELASCO</b>		10/16	<b>VELASCO, MICHAEL</b>	1	<b>O-1166</b>	<b>0700-1900</b>	<b>GASQUET CAMP</b>
<b>HEQB(T) ADAMS</b>		10/16	<b>ADAMS, ROY</b>	1	<b>O-1157</b>	<b>0700-1900</b>	<b>GASQUET CAMP</b>
<b>REAF GRITZNER</b>		10/20	<b>GRITZNER, JASON</b>	1	<b>O-1208</b>	<b>0700-1900</b>	<b>GASQUET CAMP</b>
<b>MESV MOUNTAIN MEDICS UTV5</b>	X	10/19	<b>HOLLIS, CARLI</b>	3	<b>E-785</b>	<b>0700-1900</b>	<b>GASQUET CAMP</b>
<b>SOFR JONES</b>		10/15	<b>JONES, RICK</b>	1	<b>O-1144</b>	<b>0700-1900</b>	<b>GASQUET CAMP</b>

**6. Work Assignments:**  
 Continue repair work in the French Hill area.  
 Continue to protect values at risk, assets, and infrastructure.  
 Continue to help minimize impacts according to the Suppression Repair Plan.

**7. Special Instructions:**  
 READs need to check in/out with DIVS and sync data.  
 Backhaul trash and accountable property, and return to ICP.

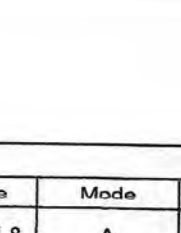
**8. Communications**

Name	Ch	Function	Rx Freq	Rx Tone	Tx Freq	Tx Tone	Mode	Notes
NIFC C55	5	COMMAND	173.8375	(T3) 131.8	165.5125	(T3) 131.8	A	RG DIP all rpt. linked to ICP
NIFC T3	8	TACTICAL	168.6000	(T3) 131.8	168.6000	(T3) 131.8	A	
A/G TAC	14	A/G TAC	169.4875	0.0	169.4875	0.0	A	
CALCORD	15	TACTICAL	156.0750	(T6) 156.7	156.0750	(T6) 156.7	A	
AIRGUARD	16	AIRGUARD	168.6250	0.0	168.6250	(T1) 110.9	A	

**9. Prepared by: Name:** Ed Morgan    **RESL**  
**Signature:**   
**ICS 204**    **Date/Time:** 10/9/2023 2200    **Personnel Count:** 49

# ASSIGNMENT LIST (ICS 204 WF)

CONTROLLED UNCLASSIFIED  
INFORMATION/BASIC

<b>1. Incident Name:</b> <b>SMITH RIVER COMPLEX SOUTH</b>		<b>2. Operational Period:</b> Date From: 10/10/23    Date To: 10/15/23 Time From: 0700    Time To: 0700				<b>3. Branch</b> <b>Division</b>  <b>Repair East</b>		
<b>4. Operations Personnel:</b> Operations Section Chief: <b>Tony Zavalla</b> Branch Director: Division/Group Supervisor: <b>William Almand</b>		Night Ops: Branch Safety: Air Attack:						
<b>5. Resources Assigned:</b>		<b>** Resources Below in Bold are 12 Hour **</b>						
Resource Identifier	ALS	LWD	Leader	Personnel	Request #	Hours	Reporting Location	
CRW2 IRON MOUNTAIN		10/17	<b>CISNEROS, FRANCISCO</b>	20	C-146	0700-1900	GASQUET CAMP	
CRW2 JC OROZCO		10/17	<b>OROZCO, CHRIS</b>	20	C-147	0700-1900	GASQUET CAMP	
WTS2 DARRAH 706		10/18	<b>KINCAID, RICK</b>	1	E-706	0700-1900	GASQUET CAMP	
DOZ2 EVANS BROTHERS		10/18	<del>HUDMAN, JAMES</del> <del>EVANS, DOUG</del> <del>GLITTON, RICHARD</del> <b>EVANS, DOUG</b>	2	E-169	0700-1900	GASQUET CAMP	
EXC2 ADAMS		10/18	<del>HUDMAN, JAMES</del> <b>HUDMAN, JAMES</b>	2	E-298	0700-1900	GASQUET CAMP	
EXC2 MILLER TRUCKING		10/19	<b>MILLER, HAROLD</b>	2	E-768	0700-1900	GASQUET CAMP	
EXC2 TIMBERSMITH GRAPPLE 2		11/4	<b>MCCLURE, CONNOR</b>	1	E-779	0700-1900	GASQUET CAMP	
CHSL TIMBERSMITH TRACK CHIPPER 2		11/4	<b>KIRBY, KEATON</b>	1	E-746	0700-1900	GASQUET CAMP	
GRD1 LET ER BUCK		10/10	<b>LASSEN, STEVE</b>	1	E-726	0700-1900	GASQUET CAMP	
TFLD JOHNSON		10/15	<b>JOHNSON, MARK</b>	1	O-1101	0700-1900	GASQUET CAMP	
TFLD TOWNSEND		10/14	<b>TOWNSEND, JACK</b>	1	O-1158	0700-1900	GASQUET CAMP	
HEQB MOLINA		10/13	<b>MOLINA, ROBERT</b>	1	O-1125	0700-1900	GASQUET CAMP	
HEQB COCKRUM		10/15	<b>COCKRUM, PAT</b>	1	O-1165	0700-1900	GASQUET CAMP	
HEQB MOLLENBERG		10/17	<b>MOLLENBERG, TYLER</b>	1	O-1192	0700-1900	GASQUET CAMP	
REAF TONER		10/15	<b>TONER, SHAIN</b>	1	O-1148	0700-1900	GASQUET CAMP	
ARCH SULLIVAN		10/18	<b>SULLIVAN, SEAN</b>	1	O-645	0700-1900	GASQUET CAMP	
AMBO 1	X	10/18	<b>JOHANSEN, ALEX</b>	2	E-93	0700-1900	GASQUET CAMP	
SOFR HUTCHINSON		10/12	<b>HUTCHINSON, MATTHEW</b>	1	O-1092	0700-1900	GASQUET CAMP	
SOFR(T) CAIN		10/13	<b>CAIN, JASON</b>	1	O-1107	0700-1900	GASQUET CAMP	
<b>6. Work Assignments:</b> Continue repair work on the 405-Road and adjacent spur roads. <span style="color: red;">BLACKWOODS REMSBY (FROM HAZARD TREE) TURNER, KALEB 1 0-476</span> Continue to work on the 16N03 and adjacent spur roads. <span style="color: red;">ROUGH COUNTRY UTV 2 10/15 (FROM HAZARD TREE) SIGGINS, MIKE 2 E-543</span> Continue to minimize impacts according to the Suppression Repair Plan.								
<b>7. Special Instructions:</b> READs need to check in/out with DIVS and sync data. Backhaul accountable property back to ICP.								
<b>8. Communications</b>								
Name	Ch	Function	Rx Freq	Rx Tone	Tx Freq	Tx Tone	Mode	Notes
NIFC C35	3	COMMAND	173.8625	(T3) 131.8	163.8250	(T3) 131.8	A	SHIP LOOKOUT all rpt. linked to ICP
NIFC T4	9	TACTICAL	166.7250	(T3) 131.8	166.7250	(T3) 131.8	A	
A/G TAC	14	A/G TAC	169.4875	0.0	169.4875	0.0	A	
CALCORD	15	TACTICAL	156.0750	(T6) 156.7	156.0750	(T6) 156.7	A	
AIRGUARD	16	AIRGUARD	168.6250	0.0	168.6250	(T1) 110.9	A	
<b>9. Prepared by: Name:</b>		Ed Morgan		RESL		Signature: 		
<b>ICS 204</b>		Date/Time: 10/9/2023 2200		Personnel Count: 61				

NIMS IAP

CONTROLLED UNCLASSIFIED INFORMATION/BASIC

# ASSIGNMENT LIST (ICS 204 WF)

CONTROLLED UNCLASSIFIED  
INFORMATION//BASIC

<b>1. Incident Name:</b> <b>SMITH RIVER COMPLEX SOUTH</b>	<b>2. Operational Period:</b> Date From: 10/10/23    Date To: 10/15/23 Time From: 0700    Time To: 0700	<b>3. Branch</b> <b>Division</b>  <b>Hazard Tree</b>
--	---	--

**4. Operations Personnel:** Page 1 of 2

Operations Section Chief: <b>Tony Zavalla</b> Branch Director: Division/Group Supervisor: <b>Aaron Schumacher/Adam Lara(T)</b>	Night Ops: Branch Safety: Air Attack:
--	---

**5. Resources Assigned:**      **\*\* Resources Below in Bold are 12 Hour \*\***

Resource Identifier	ALS	LWD	Leader	Personnel	Request #	Hours	Reporting Location
CRW1 MAD RIVER IHC		10/15	<b>ESQUIVEL, ERICK</b>	23	<b>C-142</b>	0700-1900	<b>GASQUET CAMP</b>
DOZ2 LEESVILLE 293		10/19	<b>DUGO, MATT</b>	2	<b>E-293</b>	0700-1900	<b>GASQUET CAMP</b>
AXSUS SENNEBOGEN		10/17	<b>PEREZ, ESTANCIO</b>	2	<b>S-933</b>	0700-1900	<b>GASQUET CAMP</b>
HARV BFC LIMITED		10/11	<b>MAREK, JACK</b>	2	<b>E-50346</b>	0700-1900	<b>GASQUET CAMP</b>
FEL1 PONSEE MILLER TIMBER*		10/24	<b>BERNAL, SERGIO</b>	2	<b>E-50083</b>	0700-1900	<b>GASQUET CAMP</b>
FEL1 AXSUS ENTERPRISES*		10/15	<b>RIECKERS, DUSTY</b>	2	<b>E-50084</b>	0700-1900	<b>GASQUET CAMP</b>
FEL2 MORRIS FORESTRY		10/20	<b>DAWSON, CLATE</b>	2	<b>E-718</b>	0700-1900	<b>GASQUET CAMP</b>
FEL2 AXSUS ENTERPRISES		10/16	<b>JAGER, ANDREW</b>	2	<b>E-50063</b>	0700-1900	<b>GASQUET CAMP</b>
CHSL TIMBERSMITH TRACK CHIPPER 1		11/2	<b>BRITT, RON</b>	1	<b>E-743</b>	0700-1900	<b>GASQUET CAMP</b>
EXC2 TIMBERSMITH GRAPPLE 1		11/2	<b>SIEBENTHALL, SHANE</b>	1	<b>E-778</b>	0700-1900	<b>GASQUET CAMP.</b>
CHSL TIMBERSMITH TRACK CHIPPER 3		11/6	<b>YEOMANS, ROBBY</b>	1	<b>E-747</b>	0700-1900	<b>GASQUET CAMP</b>
EXC2 TIMBERSMITH GRAPPLE 3		11/6	<b>MARTINEZ, SERGIO</b>	1	<b>E-780</b>	0700-1900	<b>GASQUET CAMP</b>
CHP1 PACIFIC RIDGELINE		10/19	<b>PERNICKA, DRAKE</b>	3	<b>E-776</b>	0700-1900	<b>GASQUET CAMP</b>
CHP2 SISKIYOU		10/18	<b>LANGE, DENNIS</b>	3	<b>E-699</b>	0700-1900	<b>GASQUET CAMP</b>
SKD2 STATEWIDE		10/27	<b>STAPP, RYAN</b>	2	<b>E-720</b>	0700-1900	<b>GASQUET CAMP</b>
SKD2 MCKELLAR		10/12	<b>MCKELLAR, DOUG</b>	2	<b>E-721</b>	0700-1900	<b>GASQUET CAMP</b>
SKD2 RIDGE LOGGING INC		10/22	<b>SLACK, JAMES</b>	2	<b>E-50334</b>	0700-1900	<b>GASQUET CAMP</b>
LOGL LESLIE HEAVY 1		10/28	<b>BARABAS, CHRISTIAN</b>	2	<b>E-723</b>	0700-1900	<b>GASQUET CAMP</b>
LOGL LESLIE HEAVY 2		10/26	<b>BARABAS, CHRISTIAN</b>	2	<b>E-724</b>	0700-1900	<b>GASQUET CAMP</b>
FORW AMERIVE		10/19	<b>SIMPKINS, ALEX</b>	2	<b>E-722</b>	0700-1900	<b>GASQUET CAMP</b>

**6. Work Assignments:**  
Continue working with READs, falling teams, and heavy equipment to mitigate hazardous trees as identified on the hazard tree abatement map.

**7. Special Instructions:**  
Backhaul trash and excess supplies, and remove accountable property.  
READs need to check in/out with DIVS and sync data.

**8. Communications**

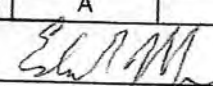
Name	Ch	Function	Rx Freq	Rx Tone	Tx Freq	Tx Tone	Mode	Notes
NIFC C35	3	COMMAND	173.8625	(T3) 131.8	163.8250	(T3) 131.8	A	SHIP LOOKOUT all rpt. linked to ICP
NIFC T5	10	TACTICAL	166.7750	(T3) 131.8	166.7750	(T3) 131.8	A	
A/G TAC	14	A/G TAC	169.4875	0.0	169.4875	0.0	A	
CALCORD	15	TACTICAL	156.0750	(T6) 156.7	156.0750	(T6) 156.7	A	
AIRGUARD	16	AIRGUARD	168.6250	0.0	168.6250	(T1) 110.9	A	

**9. Prepared by: Name:** Ed Morgan      RESL      Signature:

**ICS 204**      Date/Time: 10/9/2023 2200      Personnel Count: 59


# ASSIGNMENT LIST (ICS 204 WF)

CONTROLLED UNCLASSIFIED  
INFORMATION/BASIC

<b>1. Incident Name:</b> SMITH RIVER COMPLEX SOUTH		<b>2. Operational Period:</b> Date From: 10/10/23    Date To: 10/15/23 Time From: 0700    Time To: 0700				<b>3. Branch</b> <b>Division</b>  Hazard Tree		
<b>4. Operations Personnel:</b> Operations Section Chief: <b>Tony Zavalla</b> Branch Director: Division/Group Supervisor: <b>Aaron Schumacher/Adam Lara(T)</b>						Page 2 of 2		
						Night Ops: Branch Safety: Air Attack:		
<b>5. Resources Assigned:</b>		<b>** Resources Below in Bold are 12 Hour **</b>						
Resource Identifier	ALS	LWD	Leader	Personnel	Request #	Hours	Reporting Location	
FMOD MOEN FALLERS		10/24	<b>MOEN, ANDREW</b>	2	O-116	0700-1900	GASQUET CAMP	
FMOD CHARLIE FALLERS 154		10/24	<b>JACKSON, JUSTIN</b>	2	O-154	0700-1900	GASQUET CAMP	
FMOD TAYLOR TIMBER		10/16	<b>HOLLEMAN, COLTER</b>	2	O-155	0700-1900	GASQUET CAMP	
FMOD PAC RIDGELINE 156		10/19	<b>GRIFFIN, GENE</b>	2	O-156	0700-1900	GASQUET CAMP	
FMOD REDWOOD EMPIRE		10/21	<b>SAALA, JESSE</b>	2	O-157	0700-1900	GASQUET CAMP	
FMOD CHARLIE FALLERS		10/17	<b>CLABORN, JOSIAH</b>	2	O-1194	0700-1900	GASQUET CAMP	
<del>TFLD RIVERO (DEMOB)</del>		<del>10/17</del>	<del>RIVERO, TOMAS</del>	<del>1</del>	<del>O-1191</del>	<del>0700-1900</del>	<del>GASQUET CAMP</del>	
TFLD GUNDLE		10/19	<b>GUNDLE, COLIN</b>	1	O-1211	0700-1900	GASQUET CAMP	
REAF GRAY		10/13	<b>GRAY, CORA</b>	1	O-180	0700-1900	GASQUET CAMP	
REAF ESCAMILLA		10/20	<b>ESCAMILLA, LOUREN</b>	1	O-1207	0700-1900	GASQUET CAMP	
ARCH BONSKOWSKI		10/17	<b>BONSKOWSKI, ALICIA</b>	1	O-939	0700-1900	GASQUET CAMP	
ARCH STEVER		10/16	<b>STEVER, ERIC</b>	1	O-1168	0700-1900	GASQUET CAMP	
<del>READ</del> PFT2 JASTRZEMSKI		10/22	<b>JASTRZEMSKI, TIFFANY</b>	1	O-1213	0700-1900	GASQUET CAMP	
<del>BLACKWOODS REMS 6 (TO REP EAST)</del>		<del>10/20</del>	<del>TURNER, KALEB</del>	<del>4</del>	<del>O-476</del>	<del>0700-1900</del>	<del>GASQUET CAMP</del>	
ROUGH COUNTRY UTV3	X	10/15	<b>GIFFORD GREGGORY</b>	2	E-542	0700-1900	GASQUET CAMP	
<del>ROUGH COUNTRY UTV2 (TO REP EAST)</del>	X	<del>10/15</del>	<del>SIGGINS, MATT</del>	<del>2</del>	<del>E-543</del>	<del>0700-1900</del>	<del>GASQUET CAMP</del>	
AMBO 2	X	10/16	<b>SMITH, CHRIS</b>	2	E-92	0700-1900	GASQUET CAMP	
SOFR BASS		10/15	<b>BASS, LELAND</b>	1	O-1109	0700-1900	GASQUET CAMP	
SOFR(T) NEASE		10/13	<b>NEASE, MATTHEW</b>	1	O-1106	0700-1900	GASQUET CAMP	
SOFR(T) LUCERO		10/13	<b>LUCERO, RICK</b>	1	O-1108	0700-1900	GASQUET CAMP	
<b>6. Work Assignments:</b> Continue working with READs, falling teams, and heavy equipment to mitigate hazardous trees as identified on the hazard tree abatement map.								
<b>7. Special Instructions:</b> Backhaul trash and excess supplies, and remove accountable property. READs need to check in/out with DIVS and sync data.								
<b>8. Communications</b>								
Name	Ch	Function	Rx Freq	Rx Tone	Tx Freq	Tx Tone	Mode	Notes
NIFC C35	3	COMMAND	173.8625	(T3) 131.8	163.8250	(T3) 131.8	A	SHIP LOOKOUT all rpt. linked to ICP
NIFC T5	10	TACTICAL	166.7750	(T3) 131.8	166.7750	(T3) 131.8	A	
A/G TAC	14	A/G TAC	169.4875	0.0	169.4875	0.0	A	
CALCORD	15	TACTICAL	156.0750	(T6) 156.7	156.0750	(T6) 156.7	A	
AIRGUARD	16	AIRGUARD	168.6250	0.0	168.6250	(T1) 110.9	A	
<b>9. Prepared by: Name:</b> Ed Morgan    RESL								
ICS 204				Date/Time: 10/9/2023 2200		Signature: 		Personnel Count: 32

CONTROLLED UNCLASSIFIED INFORMATION/BASIC

# ICS 205 - INCIDENT RADIO COMMUNICATIONS PLAN

<b>1. Incident Name:</b> SMITH RIVER COMPLEX SOUTH Incident Channels		<b>2. Date/Time Prepared</b> Date: 10/09/2023 Time: 1930		<b>3. Operational Period:</b> Date To: 10/15/23 Time To: 0700					
<b>4. Communications</b>									
Ch#	Function	Name	Assigned To	Rx Freq	Rx Tone	Tx Freq	Tx Tone	Mode	Notes
1	COMMAND	NIFC C3	ALL BRANCHES	170.4250	(T3) 131.8	168.0750	(T3) 131.8	A	CAMP 6 all rpt. linked to ICP
2	COMMAND	NIFC C34	ALL BRANCHES	173.9750	(T3) 131.8	164.8625	(T3) 131.8	A	MONKEY RIDGE all rpt. linked to ICP
3	COMMAND	NIFC C35	ALL BRANCHES	173.8625	(T3) 131.8	163.8250	(T3) 131.8	A	SHIP LOOKOUT all rpt. linked to ICP
4	COMMAND	NIFC C48	UNASSIGNED	165.4625	(T3) 131.8	162.1750	(T3) 131.8	A	REMOVED FROM SYSTEM!!!
5	COMMAND	NIFC C55	ALL BRANCHES	173.8375	(T3) 131.8	165.5125	(T3) 131.8	A	RC DIP all rpt. linked to ICP
6	DISPATCH	SRF 12	DISPATCH	172.3750	0.0	164.1750	(T12) 127.3	A	NORTH COAST DISPATCH
7	TACTICAL	NIFC T1	SUPPRESSION	168.0500	(T3) 131.8	168.0500	(T3) 131.8	A	
8	TACTICAL	NIFC T3	REPAIR WEST	168.6000	(T3) 131.8	168.6000	(T3) 131.8	A	
9	TACTICAL	NIFC T4	REPAIR EAST	166.7250	(T3) 131.8	166.7250	(T3) 131.8	A	
10	TACTICAL	NIFC T5	HAZARD TREE	166.7750	(T3) 131.8	166.7750	(T3) 131.8	A	
11	TACTICAL	NIFC T6	UNASSIGNED	168.2500	(T3) 131.8	168.2500	(T3) 131.8	A	
12	TACTICAL	VFIRE 22	UNASSIGNED	154.2650	(T6) 156.7	154.2650	(T6) 156.7	A	
13	TACTICAL	VFIRE 24	UNASSIGNED	154.2725	(T6) 156.7	154.2725	(T6) 156.7	A	
14	A/G TAC	A/G TAC	ALL BRANCHES	169.4875	0.0	169.4875	0.0	A	
15	TACTICAL	CALCORD	ALL DIVS	156.0750	(T6) 156.7	156.0750	(T6) 156.7	A	EMS AIR COORDINATOR
16	AIRGUARD	AIRGUARD	ALL DIVS	168.6250	0.0	168.6250	(T1) 110.9	A	EMERGENCY USE ONLY
17									
18									
19									
20	AIRGUARD	AIRGUARD	EMERGENCY	168.6250	0.0	168.6250	(T1) 110.9	A	
<b>5. Special Instructions</b> COMMUNICATION PHONE # 510 507-5906									
<b>6. Prepared by (Communications Unit Leader): Name: Chris Perry</b>			Signature: 		Date/Time: 10/09/23 1930				
ICS 205 - CONTROLLED UNCLASSIFIED INFORMATION//BASIC									

# AIR OPERATIONS SUMMARY ICS-220

<b>Incident Name / Number</b> SMITH RIVER COMPLEX - CA-SRF-000988	<b>Sunrise</b> 7:20 <b>Startup</b> 7:50 <b>Cutoff</b> 18:10 <b>Sunset</b> 18:40	<b>Time Prepared</b> 15:00 <b>Shutdown</b> 19:10	<b>Date Prepared</b> Monday, October 9, 2023 <b>Operational Period - Date</b> Oct. 10-15, 2023	<b>Prepared By</b> Ray Ucha <b>Operational Period - Time</b> 0700-0700
<b>General Remarks, Safety Notes, Hazards, Air Operations Special Equipment, etc.</b> TRACK ALL DIPSITE LOCATIONS / NUMBER OF DIPS / GALLONS TAKEN. TRACK ALL DROP LOCATIONS / NUMBER OF DROPS / GALLONS DROPPED. COLLECT ALL GPS DATA IN DEGREES, MINUTES, DECIMAL MINUTES FORMAT.		<b>Helibase Information</b> Name Gasquet Latitude 41 50.45 Longitude 123 58.54		
<b>Frequencies</b> Command-South (Linked) See South 205 AIR / GROUND - TACTICAL 169.4875 0.0000 AIR/AIR ROTARY WING 123.7250 0.0000 TFR 126.0750 0.0000 FW AIR TACTICS 173.7000 0.0000 TOLC 168.1375 0.0000 CALCORD - MEDICAL South 166.0750 156.7 (6) AIRGUARD - Emergency Only 168.6250 110.9 (1) * See IAP for IA 205's*		<b>TFR Information</b> Request # Rectangle Altitude: Centerpoint: NOTAMS: Frequency 126.0750 <a href="http://tfr.faa.gov/tfr-2/list.html">http://tfr.faa.gov/tfr-2/list.html</a>		
<b>Rescue Ship Information</b> Day Helist Night Helist Name Phone Make/Model Location Request Procedure for These Aircraft: Shorthaul through Rogue Dispatch (Aircraft) See Medical Plan For Additional Info		<b>Rescue Ship Information</b> Day Helist Night Helist Name Phone Make/Model Location Request Procedure for These Aircraft: Shorthaul through Rogue Dispatch (Aircraft) See Medical Plan For Additional Info		

No TFR starting 10/10/2023 This 220 will be good for the next five days.

Frequencies	TX	Tone	RX	Tone	AM / FM	Position	Name	Phone	Trainee/Helibase	Phone
AIR / GROUND - TACTICAL	169.4875	0.0000	169.4875	0.0000	FM	SOUTH AOB				
AIR/AIR ROTARY WING	123.7250	0.0000	123.7250	0.0000	FM	SOUTH ASGS				
TFR	126.0750	0.0000	126.0750	0.0000	AM					
FW AIR TACTICS	173.7000	0.0000	173.7000	0.0000	FM					
TOLC	168.1375	0.0000	168.1375	0.0000	FM					
CALCORD - MEDICAL South	166.0750	156.7 (6)	166.0750	156.7 (6)	FM					
AIRGUARD - Emergency Only	168.6250	110.9 (1)	168.6250	0.0000	FM					
						Gasquet HEBM	Tyler Williams	530-310-3510	Helibase Email	tyhb2023@gmail.com

HELICOPTERS													
FAA #	Type	Make/Model	Helibase	Avail	Start	Remarks	FAA #	Type	Make/Model	Helibase	Avail	Start	Remarks
H-510	2	Bell 212	Gasquet	0800	0830	LL BUCKET							
MEDICAL A/C													
TBD	3	MH-65	Humboldt										
H-302	2	UH1	Kneeland			Coast Guard							
H-14	3	A-Star B3	Redding			Cal Fire							
353SH	3	A-Star B3	Scott Valley			CHP							
						FS							

FIXED WING ( Use Page 2 if Needed )													
FAA #	Type	Make/Model	Base	Avail	Start	Remarks	FAA #	Type	Make/Model	Base	Avail	Start	Remarks
TBD	1	TBD	RDD	0800	0830	ATGS (RDD) (Pool)	TBD	1	TBD	MFR	0800	0830	ATGS (MFR) (Pool)

## FINANCE MESSAGE

<b>Fire Name:</b> Smith River Complex
<b>Fire Number:</b> CA-SRF-000968
<b>Accounting Code:</b> P5 QJ6L (0510)
<b>Email:</b> <a href="mailto:2023.smithrivercomplex.finance@firenet.gov">2023.smithrivercomplex.finance@firenet.gov</a>
<b>Incident Phone:</b> 925-407-6353

### Finance Documents Needed upon "Check In" (If Not Already Submitted):

Please email these documents or scan the QR Code below, attach & submit.			
<b>FED Equipment/ Crews:</b> <ul style="list-style-type: none"> <li>Manifest - showing employment type (GS or WG) or AD rates if applicable</li> </ul>	<b>Overhead:</b> <ul style="list-style-type: none"> <li>AD/Casual Hire Form</li> <li>If regular Agency please ensure "GS" or "WG" is written on your CTR</li> </ul>	<b>Contract Equipment/ Contract Crews:</b> <ul style="list-style-type: none"> <li>Agreement</li> <li>Manifest</li> <li>Resource Order</li> <li>Inspections</li> </ul>	<b>Cooperator:</b> <ul style="list-style-type: none"> <li>Cooperative Agreement</li> <li>Resource Order</li> </ul>

### When emailing finance:

- Overhead/FED: *subject line:* TIME, Resource #, Resource Name
- Equipment/Cooperator: *subject line:* EQTR, Resource #, Resource Name

**Prior to your demob date, please contact Finance *via email* to expedite the demob process.**  
**Upon submittal of your final CTR/Shift Tickets, Finance will email you copies of your pay documents for review and signature.**



### Local Government Resources on CFAA

If you are demobing from an incident and there are no OES AREP on site:

Utilize your MARS account for your F-42  
 Once your draft is complete or if you have any questions call:

Chief Wakefield 916-704-3445

Or

Chief Courson 916-281-4484

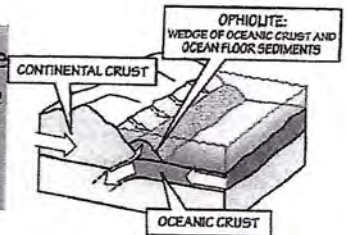
If claiming any expenses, you MUST have Finance sign your form 213 and demob 221



## Smith River Complex Incident: Resource Advisor Message

IMPORTANT: Yellow/White Striped flagging 'Equipment Exclusion' indicates resource AVOIDANCE areas.

**Lil' Gasquet fact!** The 157-million-year-old Josephine Ophiolite is one of the largest and most complete ophiolite sequences in the world. The Josephine ophiolite is famous for its massive sulfide deposits, which yield gold, silver, copper, zinc, and cobalt.



### CULTURAL AND HERITAGE RESOURCES:

The area you are working in is rich in cultural and heritage resources which may be encountered while fighting fire or during suppression repair. Avoid disturbing cultural or heritage resource if encountered.

- GPS its location and take a photo, do not remove or collect anything. Work with your division to notify a READ for recommendations on how to proceed.
- Some cultural resources present hazardous conditions, such as mining shafts. Be attentive to these potential hazards when working around known mining areas or in rocky areas.
- Known resources may be flagged ahead in work areas.
- Finding of cultural resources should not be reported over the radio.
- Coordinate with READs on all dozer operations to minimize impacts to cultural and heritage sites. Limit dozer operations to pre-existing dozer lines and limit widths to the extent possible.

### PORT ORFORD CEDAR ROOT DISEASE:

Some local drainages are infected with a root disease that spreads via mud and water and kills Port Orford cedar trees. To prevent spreading this disease to uninfected areas, all water tenders and engines will apply bleach to their tanks (1:1000 ratio). **Designated Draft Site Location by Division (setup with Bleach and fish screen)**

- Steven Bridge – Div M/P, Steven's Repair



### WEED WASH:

#### INVASIVE PLANTS



The area in and around the Smith River Complex, are home to many sensitive species. Infestations of highly invasive plant species are one of the largest threats to sensitive species populations here. Spread via vehicles and foot traffic as well as re-activation via fire is of high concern. To help protect these sensitive places, do not park in and try to avoid areas flagged areas. **Make sure to visit the WEED WASH 1 mile east Gasquet Base Camp on south side pullout State Highway 199, and one on Steven's Bridge on South Fork Road.**

## HAZARD TREE ABATEMENT GUIDELINES

### 17N05 and 17N08 Road Systems

#### Treatment Extent Includes Items 1-3

- 1) Cutting trees within 1.5 tree lengths above the road and 0.5 dominant tree height (roughly 80') below the road.
- 2) Only cutting **completely** dead trees. Trees with a **single green needle** shall stay unless impeding operations (ie. completely dead trees beyond trees with few green needles).
- 3) Felling of all trees less than 18" dbh, trees over 18" dbh may be cut if within striking distance of areas of moderate use. This includes areas of moderate and high personnel residence time such as landings, campgrounds, and bathrooms. Coordinate with Timber Resource Advisors on moderate use determination.

#### Key Operational Side Bars

- Ground equipment will be limited to slopes of 35% or less.
- Coordinate with Resource Advisors for equipment exclusion zone and site-specific treatments.
- No equipment is allowed within Riparian Reserves (Equipment Exclusion Zones) - 320 feet slope distance of perennial and 160 feet intermittent stream channels. Retain trees in Riparian Reserves, unless excessive fuels loading.
- Within Equipment Exclusion Zones, with coordination with resource advisors, material may be removed from these areas if full suspension can be achieved in order to prevent excess fuels loading.
- Whole tree yard and skid to greatest extent practicable.
- Minimize Landing Sizes
- $\geq 1$  ft. stump height

#### Rules and Guidelines:

- **Always buck for the longest preferred length. Preferred Lengths are 16'6", 33' and 41.**
- Logs not capable of being bucked to a preferred length shall be bucked to the next longest length in two-foot (2') multiples.
- Minimum scaling diameter is 6" DIB. Minimum log length is 10'. Maximum log length is 41' for tree less than 36" dbh.
- All trees 36" dbh or higher felled and retained onsite, unless excessive fuels loading

Unless otherwise specified during operations, each piece less than or equal to 20 feet will have a trim allowance of 6 inches. All logs 22-40 feet will have a 12-inch trim allowance.

#### Slash

- (1) **Chipping** is the preferred method – chip depth should not exceed 6 inches.
- (2) **Machine piles** – this is second preferred method of slash disposal. **No soil in piles.** Follow site specific of pile size and placement. Cover piles with **black 6ml plastic over a minimum of 75% of the pile.**
- (3) **Stack hardwood boles separately.** Keep stacks < 10 ft. in height.
- (4) Slash must be spread to a depth of not more than six (6) inches.

#### Flagging colors

- o **Red:** Private Property boundary
- o Boundary of Little Jones Timber Sale
- o **Orange:** Landing
- o **White and yellow striped "EQUIPMENT EXCLUSION":** Avoidance area (Exceptions: work with Resource Advisors for special circumstances)
- Minimize walking equipment across chip sealed or asphalt surface. Rubber mats or tires are required when crossing.
- Keep road surface and ditches free and clear of debris.
- Protect all structural improvements

**\*\*REFER TO HAZARD TREE ABATEMENT PLAN FOR FULL DETAILS\*\***



## Human Resource Message



# YOUR RIGHTS AND RESPONSIBILITIES

### **Rights:**

- ❖ To work in a harassment-free environment where people treat one another with dignity, equity, courtesy, and respect.
- ❖ To say “no” to unwelcome advances or requests for favors.
- ❖ To file complaints or grievances through appropriate avenues.

### **Responsibilities:**

- ❖ To behave in a manner that treats people with dignity, equity, courtesy, and respect.
- ❖ To abide by agency and incident ethics and conduct regulations.
- ❖ To report any harassment or other inappropriate behavior you observe or experience.



# PUBLIC INFORMATION



## FIRE INFORMATION

The PIO team maintains a Linktree website with informational links to Inciweb, CalTrans, smoke reports and much more. Please feel free to direct members of the public to our Linktree website using the QR code here.

---

## LOST AND FOUND

Lost something on the incident? Missing your keys or wallet? Stop by the PIO office at Gasquet base camp and check our lost and found!



## THINK BEFORE YOU POST

Please have your photos of the incident approved by the PIO team before posting to your personal social media accounts. Contact us with any questions or concerns about approved content.

---

Direct any public or media inquiries to the Information Center at 707-383-9727 (8 am to 8 pm) or email at [2023.SmithRiverComplex@firenet.gov](mailto:2023.SmithRiverComplex@firenet.gov).

Smith River Complex  
(South)

## CHECK-IN

1. Scan the QR code and select INITIAL CHECK IN. If returning from R&R use the same QR code but fill out the RETURN FROM R&R link.
2. Submit all required documents to Finance by emailing them to [2023.SmithRiverComplex.Finance@firenet.gov](mailto:2023.SmithRiverComplex.Finance@firenet.gov)
3. Go find your incident supervisor or attend morning briefing.

E-Mail: [2023.SmithRiverComplex.Checkin@firenet.gov](mailto:2023.SmithRiverComplex.Checkin@firenet.gov)

## DEMOB

1. Make sure you are current with your CTR's or Shift Tickets.
2. Stop by the Check-In / Demob trailer to pick up your **221 Demob Sheet**.
3. Visit **Supplies** and **Communication**. Get inspected at **Ground Support**. Get weed washed. If a trainee visit the **Training Specialist**.
4. Finalize time with **Finance**.
5. Submit the completed 221 to DEMOB. Safe travels!

**If you need a flight home contact DEMOB 72 hours (3 days) before your demob date. Stop by to fill out an Air Travel Request form.**

DEMOB questions? 541 801-3761

Email: [2023.SmithRiverComplex.demob@firenet.gov](mailto:2023.SmithRiverComplex.demob@firenet.gov)



**SMITH RIVER COMPLEX  
TENTATIVE RELEASE**

**5 DAY IAP DEMO LIST**

**TUESDAY, OCTOBER 10, 2023**

<u>RESOURCE #</u>	<u>ITEM CODE</u>	<u>NAME</u>	<u>TIME TO SEE FINANCE</u>
<u>CREWS:</u>			
C-143	CRWC	VISTA 1	0730
<u>EQUIPMENT:</u>			
E-77	MECH	ROGER MICHAEL'S EQUIPMENT	0730
E-308	GIS1	FIRESTORM WILDLAND	0730
E-79	CLSU	J & A BUSINESS	0800
<u>OVERHEAD:</u>			
O-1067	REAF	JASMINE BERG	0730
O-1034	READ	DALYNN DYKSTRA	0730
O-1041	SECI	ARTHUR SEYLER	0740
O-1057	COMT	JUSTIN BELL	0740
O-1196	PTRC	LILI MCGARY	0750
O-1128	DIVS	ROB DECAMP	0750
O-1127	AOBD	RAMON UCHA	0800

**WEDNESDAY, OCTOBER 11, 2023**

<u>RESOURCE #</u>	<u>ITEM CODE</u>	<u>NAME</u>	<u>TIME TO SEE FINANCE</u>
<u>EQUIPMENT:</u>			
E-486	STK1	FIREFOX	0730
<u>OVERHEAD:</u>			
O-154	FMOD	CHARLIE FALLERS	0730
O-1179	RADO	ALEJANDRO VASQUEZ	0730
O-1064	TNSP	JOHN FAKEHANY	0740
O-1062	HRSP	ANTHONY TORRES	0740

**THURSDAY, OCTOBER 12, 2023**

<u>RESOURCE #</u>	<u>ITEM CODE</u>	<u>NAME</u>	<u>TIME TO SEE FINANCE</u>
<u>EQUIPMENT:</u>			
E-454	AMB2	CHLEMS INC	0730
E-471	STK1	SIERRA EARTHWORKS	0730
<u>OVERHEAD:</u>			
O-50559	REAF	NICOLE PHILLIPS	0730
O-1085	MEDL	DANIEL CORBIN	0730
O-50553	REAF	CHLOE ROSS	0740

### FRIDAY, OCTOBER 13, 2023

<u>RESOURCE #</u>	<u>ITEM CODE</u>	<u>NAME</u>	<u>TIME TO SEE FINANCE</u>
<u>EQUIPMENT:</u>			
E-721	SKD2	MCKELLAR TREE	0730
E-731	ENG3	CASRF E341	0730
<u>OVERHEAD:</u>			
O-1203	RADO	BRANDON PAULITE	0730
O-1108	SOFR	RICK LUCERO	0730
O-1088	SCKN	PATRICK VOLOSIN	0740
O-1084	SCKN(T)	WILLIAM JOHNSON	0740
O-1092	SOFR	MATTHEW HUTCHINSON	0750
O-1087	DIVS	ADAM LARA	0750
O-1209	PROC	PAUL WOOD	0800
O-1081	DIVS	AARON SCHUMACHER	0800
O-1062	FOBS	AUSTIN KRIE	0810
O-1083	FOBS	JOSEPH ORONA	0820

### SATURDAY, OCTOBER 14, 2023

<u>RESOURCE #</u>	<u>ITEM CODE</u>	<u>NAME</u>	<u>TIME TO SEE FINANCE</u>
<u>OVERHEAD:</u>			
O-1146	EQTR	BARBARA PHEGLEY	0730
O-1086	SCKN	MELODY FLORES	0730
O-1125	HEQB	ROBERT MOLINA	0740
O-1113	AREP	EDGARDO LOPEZ	0740
O-1107	SOFR	JASON CAIN	0750
O-1106	SOFR	MATTHEW NEASE	0750



## **Logistics Operating Hours**

### ***Gasquet***

Caterer:	Breakfast: 0600-0900, Dinner: 1800-2100
Shower:	0500 - 1200 then 1400 - 2300
Supply:	0630 - 2100
Laundry:	0500 - 2300
Fuel at Gasquet:	0600 - 1300 then 1500 to 2100
Medical Trailer:	0600 - 2200, (Emergencies 24/7)
Weed Wash:	0700 - 1900

***Stevens Ranch Remote Base is closed as of the afternoon of Sunday, October 8, 2023. There will be no services at that location.***

### ***Weed Wash Direction***

**Gasquet Weed Wash is 1 mile east of Gasquet ICP on South side of the road.**

**Steven's Weed Wash is on the south side of Stevens Bridge.**

**All vehicles must visit the Stevens Weed Wash when working Div M or Div L, and heading to Gasquet Base or another work location. When working all other fire locations, or working out of Gasquet, the proper Weed Wash to use is Gasquet Weed Wash.**



## LINE ORDER FORM

<u>ORDER #</u>	<u>DATE &amp; TIME ORDERED</u> Received from the Line	<u>WHO PLACED ORDER</u> DIVS, OPS, etc...	<u>DELIVER to (DIV, Helispot, DP, etc.)</u> Division, Heli-Spot, Drop Point, etc.	<u>MODE of DEVIVERY</u> Drive, Helo, pick-up

<u>Order Received in Communications By:</u>	<u>TIME:</u>

<u>Communications Relayed/Placed the Order To:</u>	<u>TIME:</u>

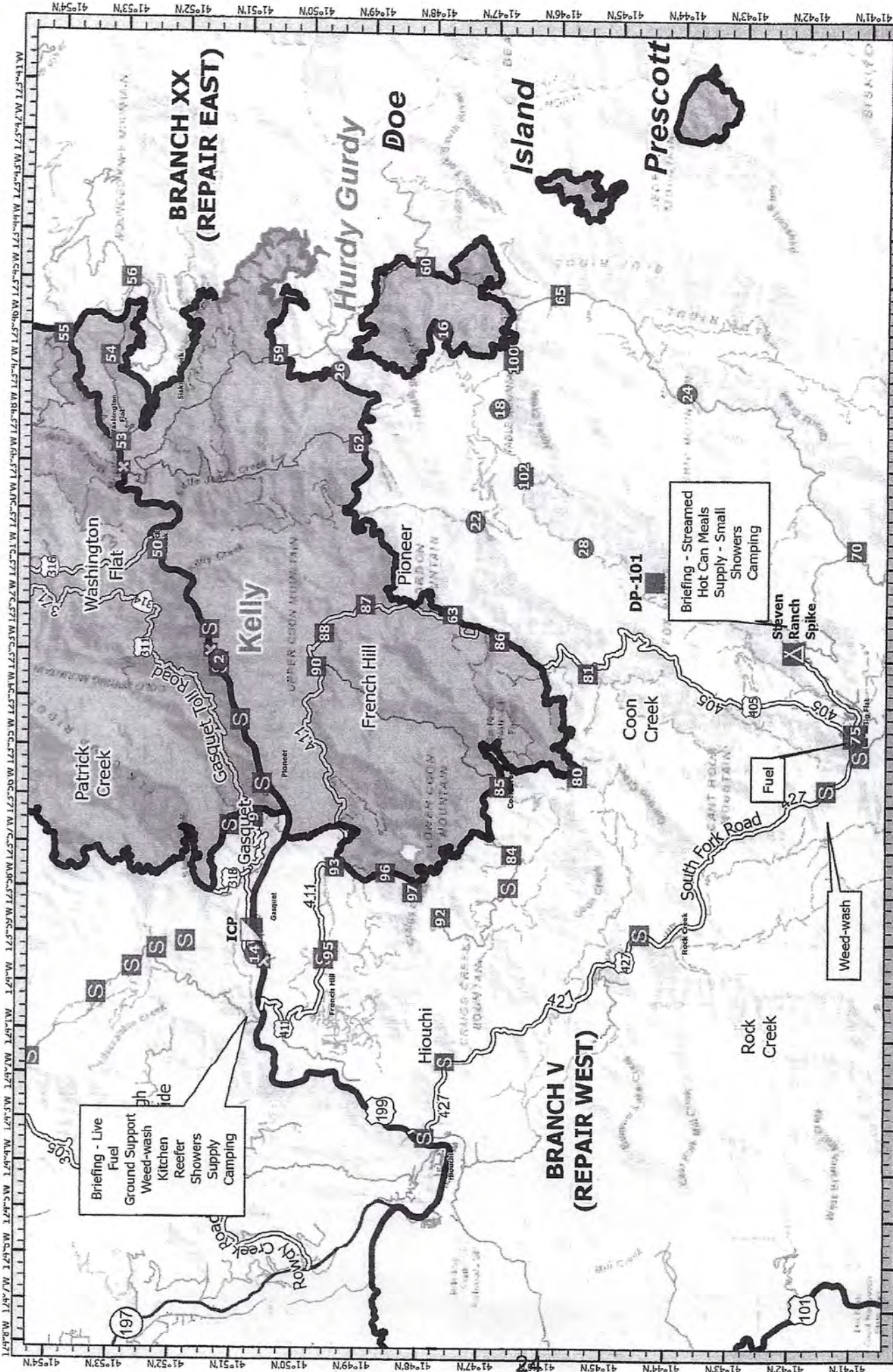
<u>Order Shipped to the Line By (Name):</u>	<u>TIME:</u>

<u>ITEM#</u>	<u>DESCRIPTION</u>	<u>AMOUNT</u>
1	<b>1,000 Foot Hose Lay:</b> Includes the following 10 lengths, 1 ½" x 100' Hose. 10 lengths, 1" x 100' Hose. 10ea. 1 ½" Gated Wyes. 10ea. 1 ½" to 1" Reducers. 10ea. 1" Nozzles.	
2	<b>2,000 Foot Hose Lay:</b> Includes the following 20 lengths, 1 ½" x 100' Hose. 20 lengths, 1" x 100' Hose. 20ea. 1 ½" Gated Wyes. 20ea. 1 ½" to 1" Reducers. 20ea. 1" Nozzles.	
3	<b>3,000 Foot Hose Lay:</b> Includes the following 30 lengths, 1 ½" x 100' Hose. 30 lengths, 1" x 100' Hose. 30ea. 1 ½" Gated Wyes. 30ea. 1 ½" to 1" Reducers. 30ea. 1" Nozzles.	

<u>ITEM#</u>	<u>REQUESTED ITEM</u>	<u>NFES#</u>	<u>AMOUNT</u>	<u>ITEM#</u>	<u>REQUESTED ITEM</u>	<u>NFES#</u>	<u>AMOUNT</u>
4	Backpack Pump, 5 gallon	1149		26	Batteries, "AA", (package)	0030	
5	Foam, 5 gallon	1145		27	Gasoline, Unleaded (gallon)		
6	Hose, ¾ inch, 50 ft. length	1016		28	Oil, 2 Cycle Mix (quart)	0341	
7	Hose, 1 inch, 100 ft. length	0966		29	Diesel, straight (gallon)		
8	Hose, 1 ½ inch, 100 ft. length	0967		30	Oil, Bar & Chain (gallon)	1880	
9	Increaser, ¾" to 1"	2235		31	Fusees (box)	0105	
10	Increaser, 1" to 1 ½"	0416		32	Torch, Drip Torch ea.	0241	
11	Nozzle, Garden ¾ inch	0136		33	Mix, Drip Torch 3-1, 5 gal.		
12	Nozzle, Forester, 1"	0024		34	Flagging, Ribbon, Color/Roll		
13	Nozzle, KK Type, 1"	1081		35	Washcloth, Waterless	0206	
14	Nozzle, KK Type, 1 ½"	1082		36	Water, Cubi, 5 gallon ea.	0048	
15	Reducer, 1" to ¾"	0733		37	Water, Bottled, (case)		
16	Reducer, 1 ½" to 1"	0009		38	Sports Drink, Gatorade (case)		
17	Tee, Hoseline, 1"x1"x ¾"	1809		39	Food, MRE's (12 per Box)	1842	
18	Tee, Hoseline, 1"x1"x 1"	2240		40	Pump Kit, High Pressure	0870	
19	Tee, Hoseline, 1 ½" x 1 ½" x 1"	0230		41	Pump, High Pressure	0148	
20	Wye, Gated, ¾" inch	0904		42	Pump Kit, Light Weight	0670	
21	Wye, Gated, 1"	0259		43	Sprinkler Kit	1048	
22	Wye, Gated, 1 ½"	0231		44	Pump Kit, Volume	6041	
23	Tank, Collapsible. Capacity Gallons?			45	Mop-Up Kit	0772	
24	Tank, Folding/Frame. Capacity ??						
25	Wrap, Structure (roll)	0881					

Date and Time Needed: \_\_\_\_\_ Point of Contact at Delivery Location: \_\_\_\_\_

OTHER / NOTES:



Briefing - Live  
 Fuel  
 Ground Support  
 Weed-wash  
 Kitchen  
 Reefer  
 Showers  
 Supply  
 Camping

Briefing - Streamed  
 Hot Can Meals  
 Supply - Small  
 Showers  
 Camping

Weed-wash

Smith River Complex  
**TRANS**  
 CA-SRF-000968

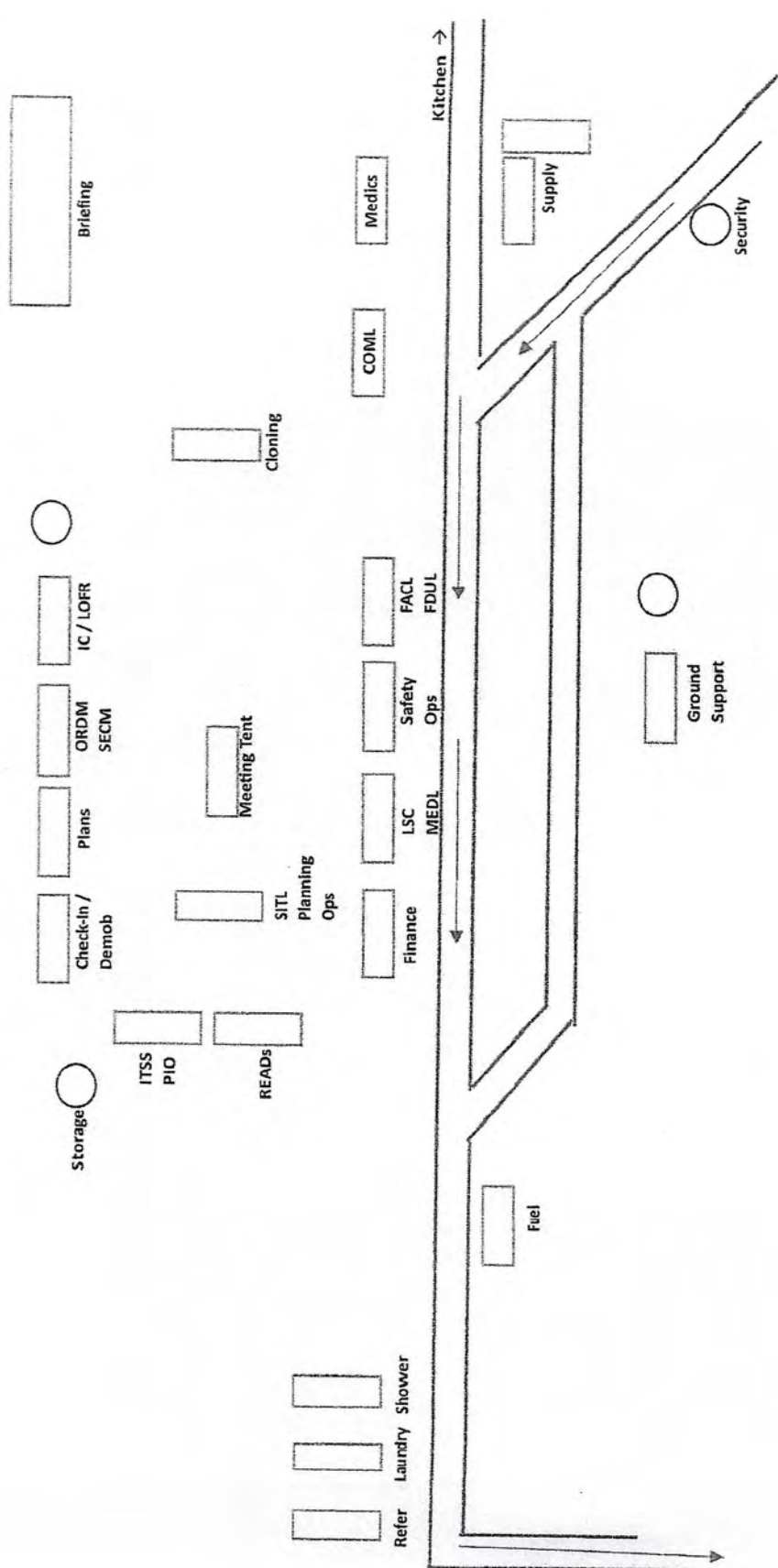
0 0.75 1.5 3 Miles

NR093 LTM 10N 1144.000

● Heli-spot  
 II Branch Break  
 ▽ Incident Command Post  
 ■ Drop Point  
 X Closure  
 △ Camp  
 ▽ Staging Area  
 ■ Contained  
 □ Uncontained  
 — Interstate  
 — Highway  
 — Local Road



Personality: GCR-000968-001-001



Base Camp Map

**INTENTIONALLY LEFT BLANK**





1. Incident Name				2. Operational Period							
<b>Smith River Complex – South</b>				Date/Time: <b>10/10/2023-10/15/2023(0700-0700)</b>							
3. Incident Medical Aid											
Name		Location		Medical Emergency Contact		ALS Yes No					
Mountain Medics		Gasquet Base Camp		COMMAND		X					
4. Air Rescue / Air Ambulance Services											
Name		Location / Contact		Type of Aircraft & Capability							
Cal Fire 902		South Smith Comms		Helicopter Type 2 ALS / Day Hoist Only							
CHP H14/H15		South Smith Comms		Helicopter Type 3 ALS / Day Hoist Only							
H-353SH		South Smith Comms from Scott Valley HB		Helicopter Type 3 BLS / Short Haul Only							
Reach 5		South Smith Comms		Helicopter Type 3 ALS / Medevac only / 24hrs							
5. Hospitals (all times estimated from incident location)											
Name & Trauma Level		GPS Datum – WGS 84 Degrees Decimal Minutes		Travel Time (From ICP)		Phone		Helipad Yes No		Address	
				Air	Ground						
Sutter Coast Hospital Level 4		Lat: N 41° 46.423'	W 124° 11.643'	N/A	25 MINS	707-464-8888			X	800 E. Washington Blvd Crescent City, CA 95531	
Asante 3 Rivers Medical Center Level 3		Lat: N 42° 25.291'	W 123° 20.577'	25 MINS	1.5 HRS	541-789-7000		X		500 SW Ramsey Ave. Grants Pass, OR 97527	
Asante Rogue Regional Level 2		Lat: N 42° 19.050'	W 122° 49.839'	50 MINS	3.5 HRS	541-789-7000		X		2825 E. Barnett Rd. Medford, OR 97504	
Mercy Medical Center Level 2		Lat: N 40° 34.300'	W 122° 23.754'	65 MINS	4.5 HRS	530-225-7200		X		2175 Rosaline Ave. Redding, CA 96001	
UC Davis Medical Center Level 1 – Burn Center		Lat: N 38° 33.282'	W 121° 27.279'	1.5 HRS	7 HRS	ER Physician Referral ONLY		X		4301 X Street Sacramento, CA 95817	
6. Division / Crew Emergency Pre-Plan				Update and discuss with assigned resources daily.							
Fireline EMT / Medic's Division / Branch Location											
Air Hoist site location site: Lat: / Long: / Elevation:											
Helispot: Lat: / Long: / Elevation: MED LZ:											
7. Prepared By (Medical Unit Leader)			8. Date/Time		9. Reviewed By (Safety Officer)		10. Date/Time				
<b>Zachary Wolf</b> MEDL-T			10/9/2023 1800		<b>Jeff Barnhart</b> SOF2		10/09/2023 1800				

FOR A **NON-EMERGENCY INCIDENT**: WORK THROUGH CHAIN OF COMMAND TO REPORT AND TRANSPORT INJURED PERSONNEL AS NECESSARY.

FOR A **MEDICAL EMERGENCY**: IDENTIFY ON SCENE INCIDENT COMMANDER BY NAME AND POSITION AND ANNOUNCE "MEDICAL EMERGENCY" TO INITIATE RESPONSE FROM COMMUNICATIONS

Use the following items to communicate situation to communications/dispatch.

**1. CONTACT COMMUNICATIONS / DISPATCH** (Verify correct frequency prior to starting report)

Ex: "Communications, Div. Alpha. Stand-by for Emergency Traffic."

**2. INCIDENT STATUS:** Provide incident summary (including number of patients) and command structure.

Ex: "Communications, I have a Red priority patient, unconscious, struck by a falling tree.

Requesting air ambulance to Forest Road 1 at (Lat./Long.)

"This will be the Trout Meadow Medical Incident, IC is TFLD Jones. EMT Smith is providing medical care."

Severity of Emergency AND Transport Priority (priority 1, 2, 3)	<input type="checkbox"/> <b>RED / PRIORITY 1 Life or limb threatening injury or illness. Evacuation need is IMMEDIATE</b> <i>Ex: Unconscious, difficulty breathing, bleeding severely, 2<sup>o</sup> - 3<sup>o</sup> burns more than 4 palm sizes, heat stroke, disoriented.</i>	
	<input type="checkbox"/> <b>YELLOW / PRIORITY 2 Serious Injury or illness. Evacuation may be DELAYED if necessary.</b> <i>Ex: Significant trauma, unable to walk, 2<sup>o</sup> - 3<sup>o</sup> burns not more than 1-3 palm sizes.</i>	
	<input type="checkbox"/> <b>GREEN / PRIORITY 3 Minor Injury or illness. Non-Emergency transport</b> <i>Ex: Sprains, strains, minor heat-related illness.</i>	
Nature of Injury or Illness & Mechanism of Injury		Brief Summary of Injury or Illness (Ex: Unconscious, Struck by Falling Tree)
Transport Request		Air Ambulance / Short Haul/Hoist Ground Ambulance / Other
Patient Location		Descriptive Location & Lat. / Long. (WGS84)
Incident Name		Geographic Name + "Medical" (Ex: Trout Meadow Medical)
On-Scene Incident Commander		Name of on-scene IC of Incident within an Incident (Ex: TFLD Jones)
Crew Patient Care		Name of Care Provider (Ex: EMT Smith)

**3. INITIAL PATIENT ASSESSMENT:** Complete this section for each patient as applicable (start with the most severe patient)

Patient Assessment: (IRPG PAGE 106)	Age:	Weight:	Chief Complaint:
Skin Signs: (color/moisture/temp)	Level of Consciousness:	BP:	HR:      Respirations:
Treatment:			

**4. TRANSPORT PLAN:**

Evacuation Location (drop point, intersection, helispot, Lat. / Long, hazards)      Patient's ETA to Location:

**5. ADDITIONAL RESOURCES / EQUIPMENT NEEDS:**

Paramedic / EMT - Crews - Immobilization Devices - AED - Oxygen - Trauma Bag - IV/Fluid(s) - Splints - Rope rescue - Wheeled litter - HAZMAT - Extrication

**6. COMMUNICATIONS: Identify State Air/Ground EMS Frequencies and Hospital Contacts as applicable**

Function	Channel Name/Number	Receive (RX)	Tone/NAC *	Transmit (TX)	Tone/NAC *
COMMAND					
AIR-TO-GRND					
TACTICAL					

**7. CONTINGENCY: Considerations:** If primary options fail, what actions can be implemented in conjunction with primary evacuation method?  
Be thinking ahead.

**8. ADDITIONAL INFORMATION:** Updates/Changes, etc.

**REMEMBER:** Confirm ETA's of resources ordered. Act according to your level of training  
Be Alert - Keep Calm - Think Clearly - Act Decisively

\*\*\* Follow up with MEDL upon return to ICP \*\*\*