

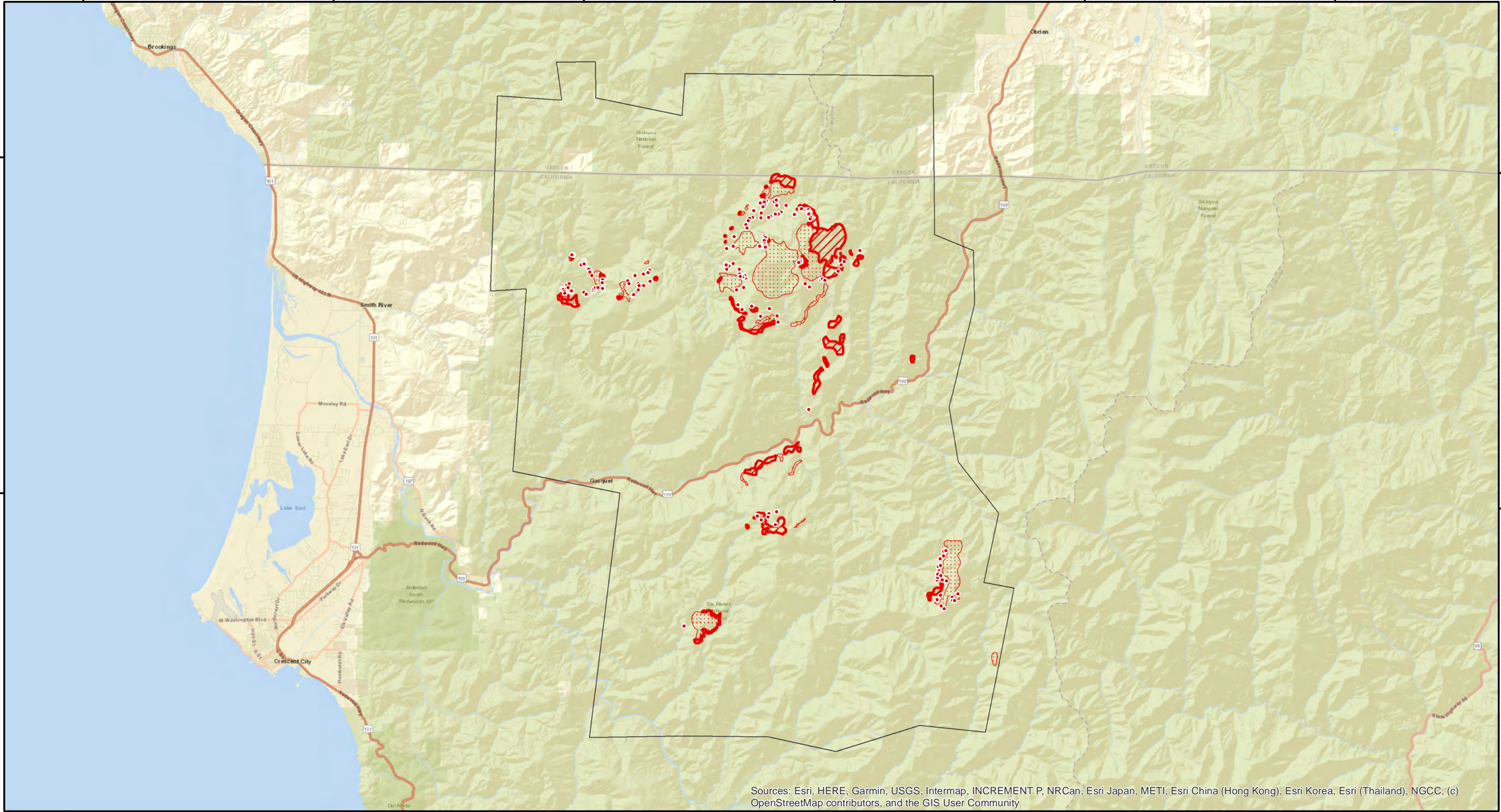
124°20'0"W 124°10'0"W 124°0'0"W 123°50'0"W 123°40'0"W 123°30'0"W

42°0'0"N

42°0'0"N

41°50'0"N

41°50'0"N



Sources: Esri, HERE, Garmin, USGS, Intermap, INCREMENT P, NRCan, Esri Japan, METI, Esri China (Hong Kong), Esri Korea, Esri (Thailand), NGCC, (c) OpenStreetMap contributors, and the GIS User Community

124°20'0"W

124°10'0"W

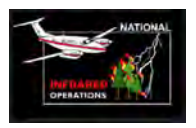
124°0'0"W

123°50'0"W

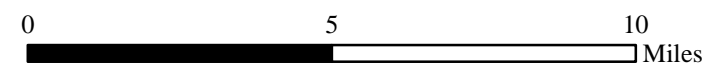
123°40'0"W

123°30'0"W

INFRARED MAP
SMITH RIVER COMPLEX
CA-SRF-968
 Infrared (Interpreted) Acres:N/A
 August 19, 2023 @ 2109 PDT



IRIN: Cheron Ferland
Duluth, MN
Nad 83 Zone 10



| | |
|--|-------------------------|
| | IR Isolated Heat Source |
| | Cloud Cover |
| | IR Heat Perimeter |
| | IR Intense Heat |
| | IR Scattered Heat |