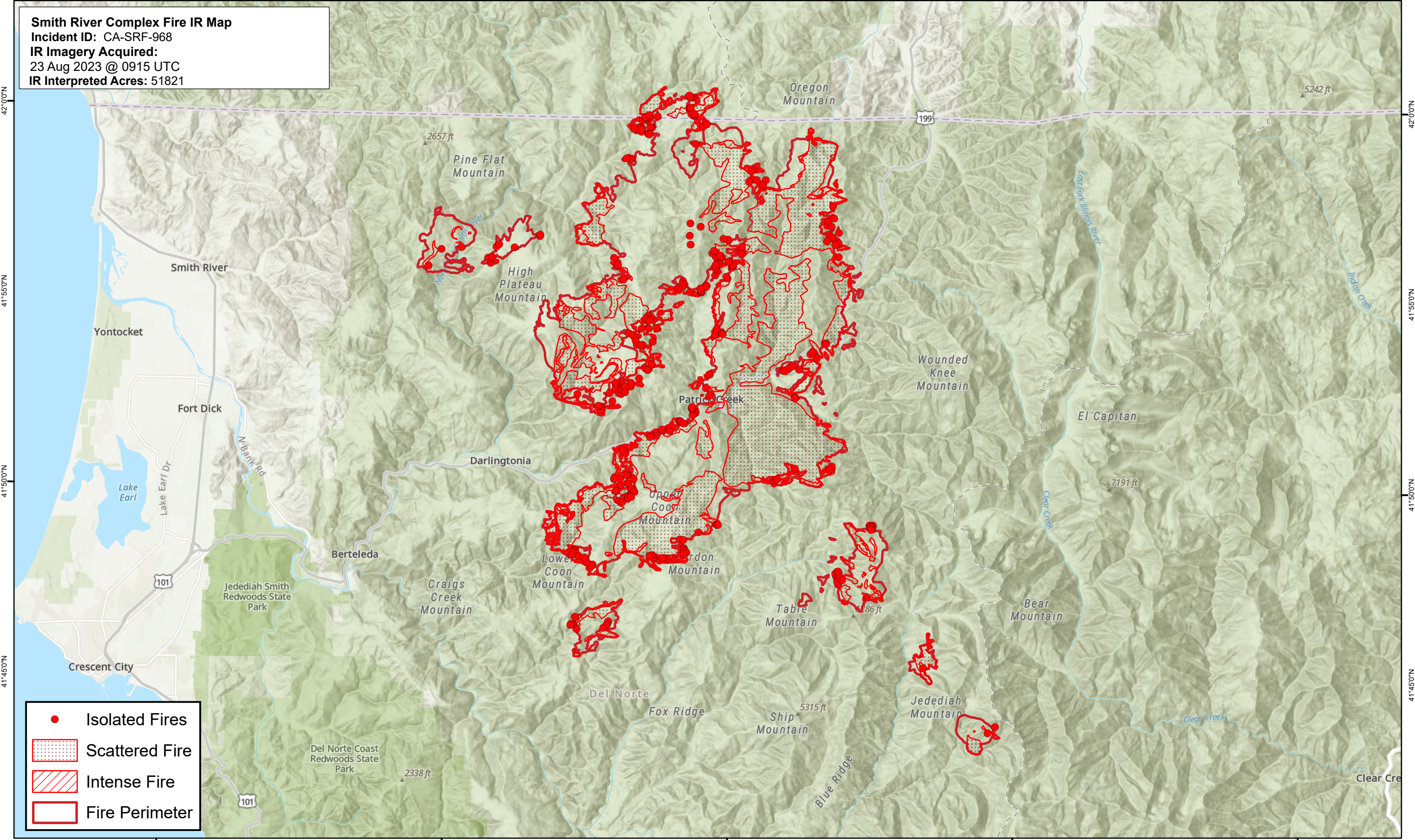




124°15'0"W 124°10'0"W 124°5'0"W 124°0'0"W 123°55'0"W 123°50'0"W 123°45'0"W 123°40'0"W 123°35'0"W 123°30'0"W

Smith River Complex Fire IR Map
Incident ID: CA-SRF-968
IR Imagery Acquired:
23 Aug 2023 @ 0915 UTC
IR Interpreted Acres: 51821



42°0'0"N
41°55'0"N
41°50'0"N
41°45'0"N

42°0'0"N
41°55'0"N
41°50'0"N
41°45'0"N

124°10'0"W 124°5'0"W 124°0'0"W 123°55'0"W 123°50'0"W 123°45'0"W 123°40'0"W 123°35'0"W 123°30'0"W

- Isolated Fires
- Scattered Fire
- Intense Fire
- Fire Perimeter

