

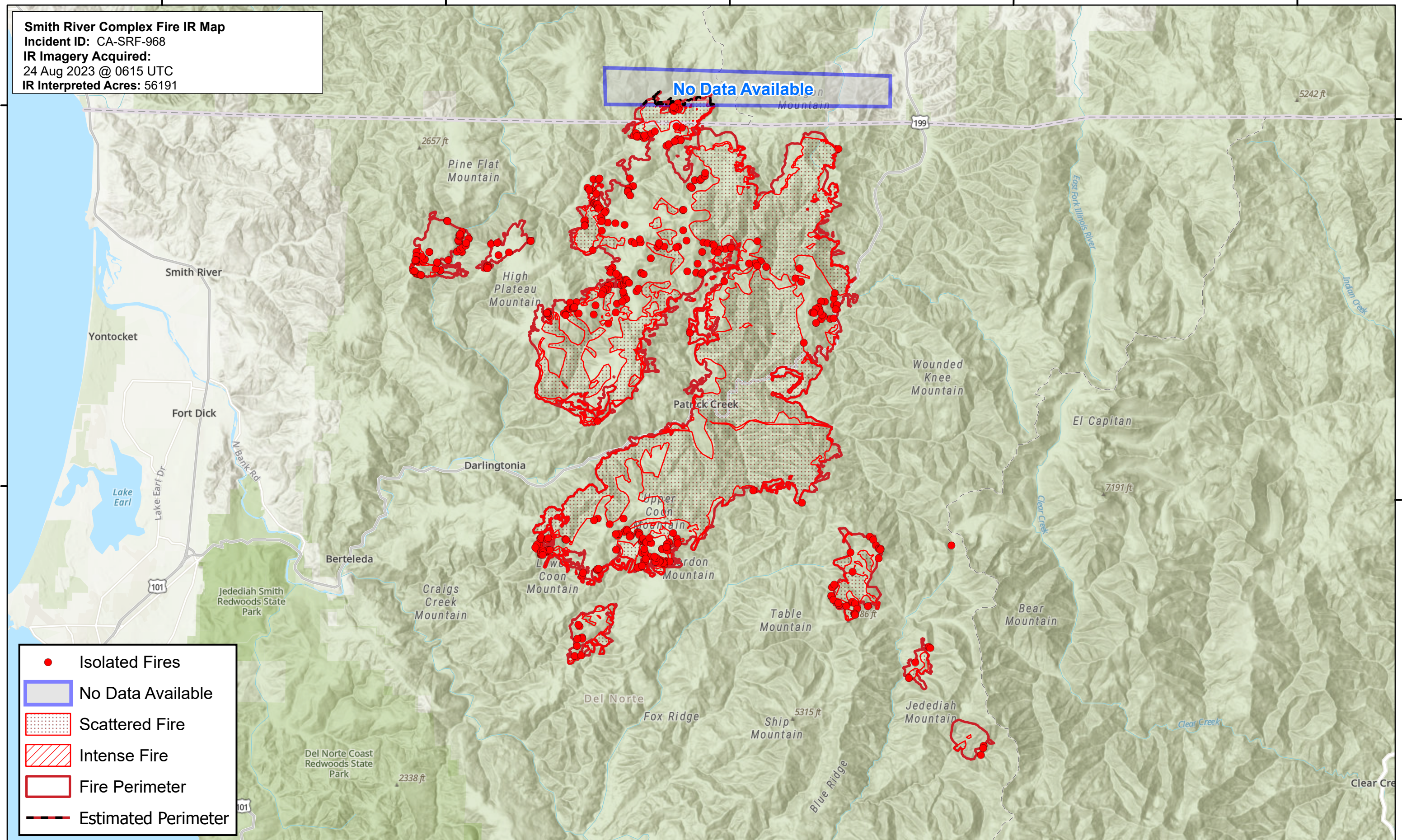


124°15'0"W 124°10'0"W 124°5'0"W 124°0'0"W 123°55'0"W 123°50'0"W 123°45'0"W 123°40'0"W 123°35'0"W 123°30'0"W

### Smith River Complex Fire IR Map

Incident ID: CA-SRF-968  
IR Imagery Acquired:  
24 Aug 2023 @ 0615 UTC  
IR Interpreted Acres: 56191

No Data Available



- Isolated Fires
- ▭ No Data Available
- ▨ Scattered Fire
- ▧ Intense Fire
- ▭ Fire Perimeter
- Estimated Perimeter

