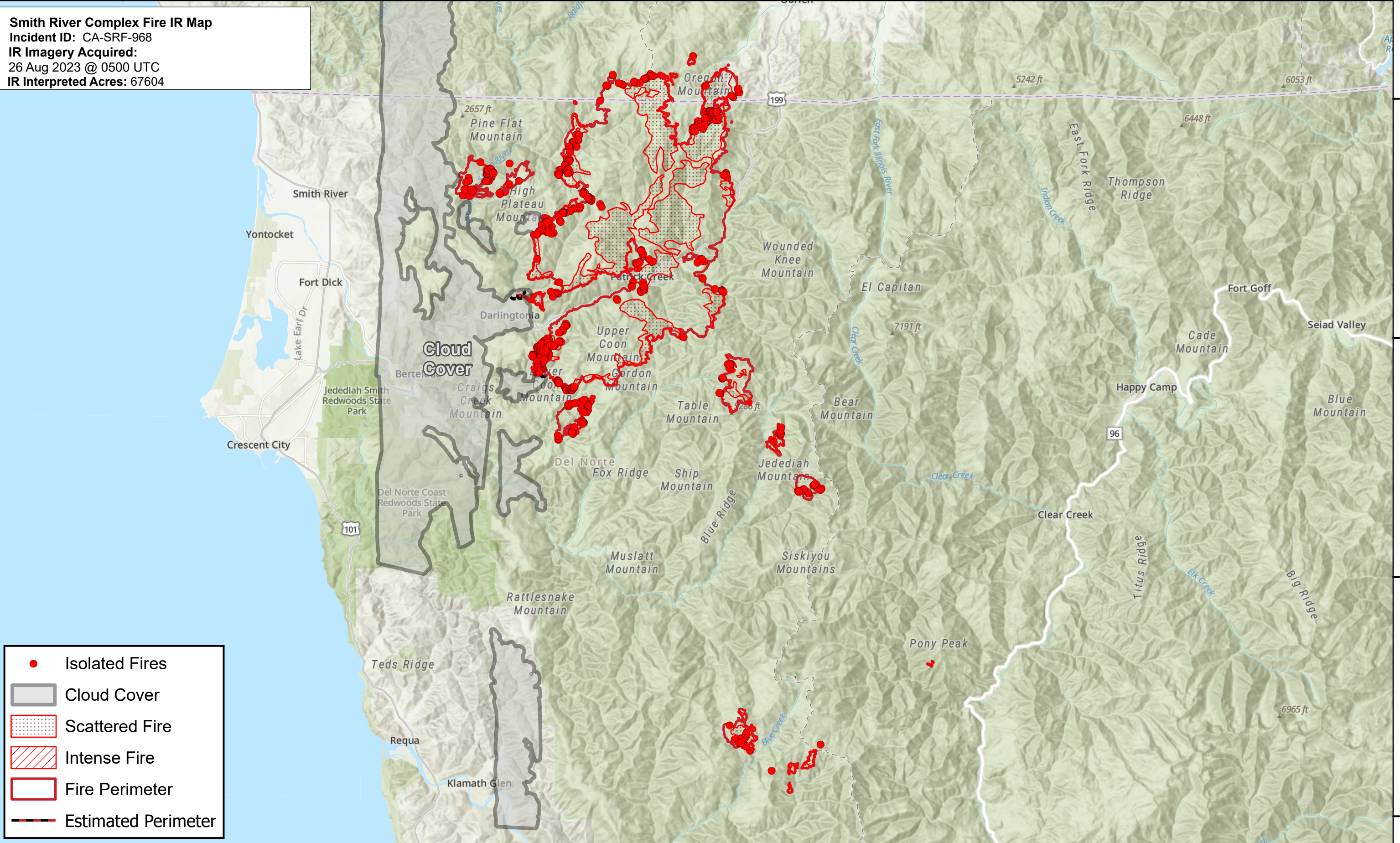




124°25'0"W 124°20'0"W 124°15'0"W 124°10'0"W 124°5'0"W 124°0'0"W 123°55'0"W 123°50'0"W 123°45'0"W 123°40'0"W 123°35'0"W 123°30'0"W 123°25'0"W 123°20'0"W 123°15'0"W 123°10'0"W

Smith River Complex Fire IR Map
Incident ID: CA-SRF-968
IR Imagery Acquired:
26 Aug 2023 @ 0500 UTC
IR Interpreted Acres: 67604

42°0'0"N
41°55'0"N
41°50'0"N
41°45'0"N
41°40'0"N
41°35'0"N
41°30'0"N



- Isolated Fires
- Cloud Cover
- Scattered Fire
- Intense Fire
- Fire Perimeter
- Estimated Perimeter

124°25'0"W 124°20'0"W 124°15'0"W 124°10'0"W 124°5'0"W 124°0'0"W 123°55'0"W 123°50'0"W 123°45'0"W 123°40'0"W 123°35'0"W 123°30'0"W 123°25'0"W 123°20'0"W 123°15'0"W 123°10'0"W

