

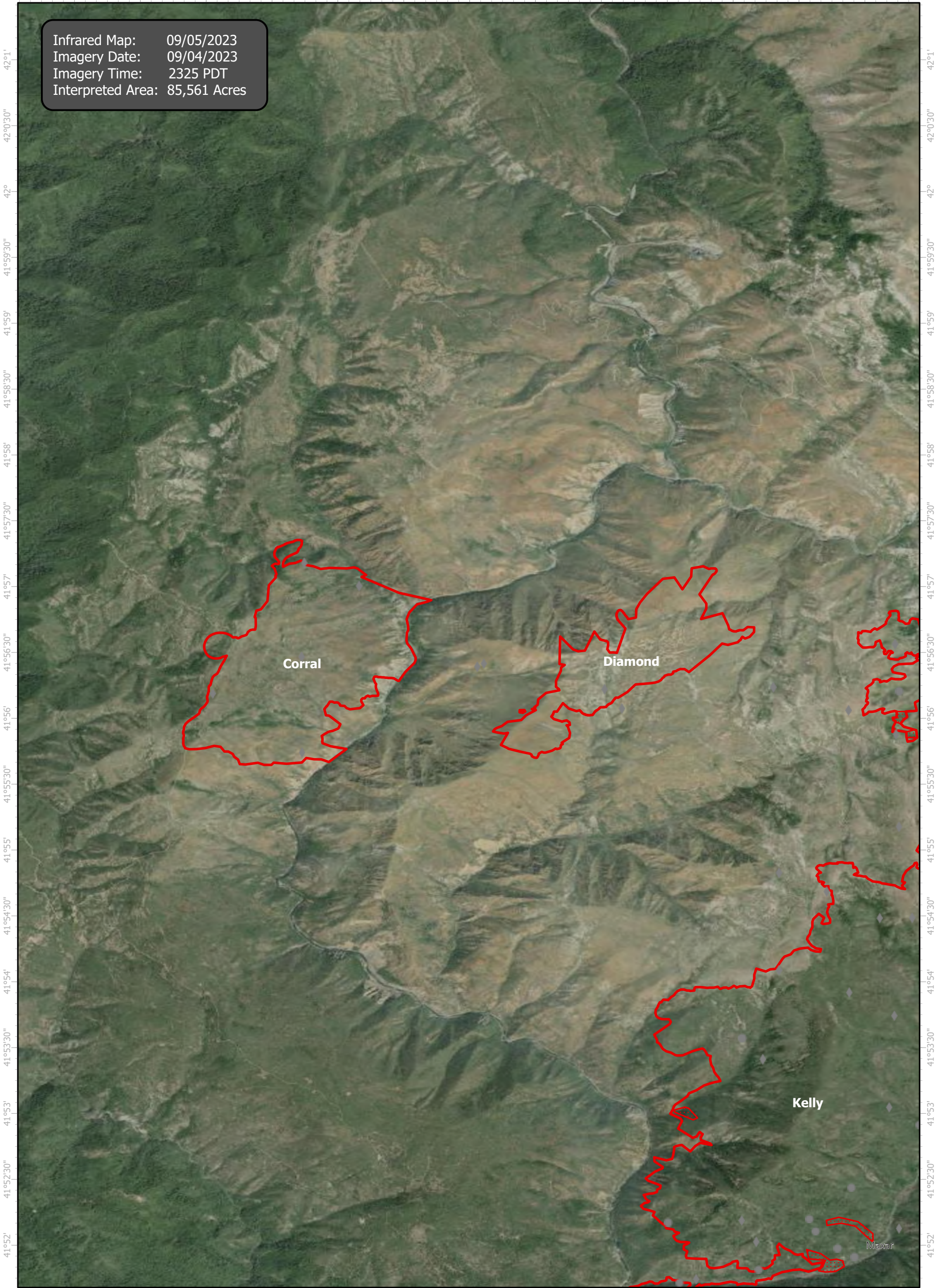
SmithRiverComplex Infrared Map

Incident # (CA-SRF-968W) Corral (1, 090 Acres), Diamond (550 Acres)



-124°2' -124°1'30" -124°1' -124°0'30" -124° -123°59'30" -123°59' -123°58'30" -123°58' -123°57'30" -123°57' -123°56'30" -123°56'

Infrared Map: 09/05/2023
Imagery Date: 09/04/2023
Imagery Time: 2325 PDT
Interpreted Area: 85,561 Acres



Corral

Diamond

Kelly

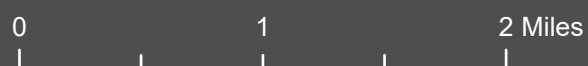
Maxar

-124°2' -124°1'30" -124°1' -124°0'30" -124° -123°59'30" -123°59' -123°58'30" -123°58' -123°57'30" -123°57' -123°56'30" -123°56'



GCS WGS 1984

Scale: 1:50,000



- IR Isolated Heat Source
- ◆ Possible IR Heat Source
- ▭ IR Heat Perimeter
- ▭ IR Scattered Heat

Infrared Interrupter: Daniel LeVrier
email: daniel.levrier@usda.gov