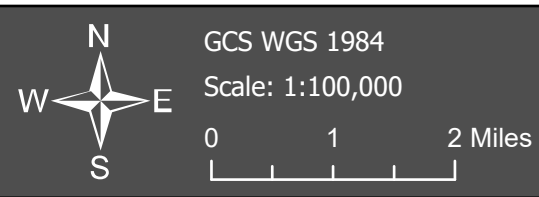
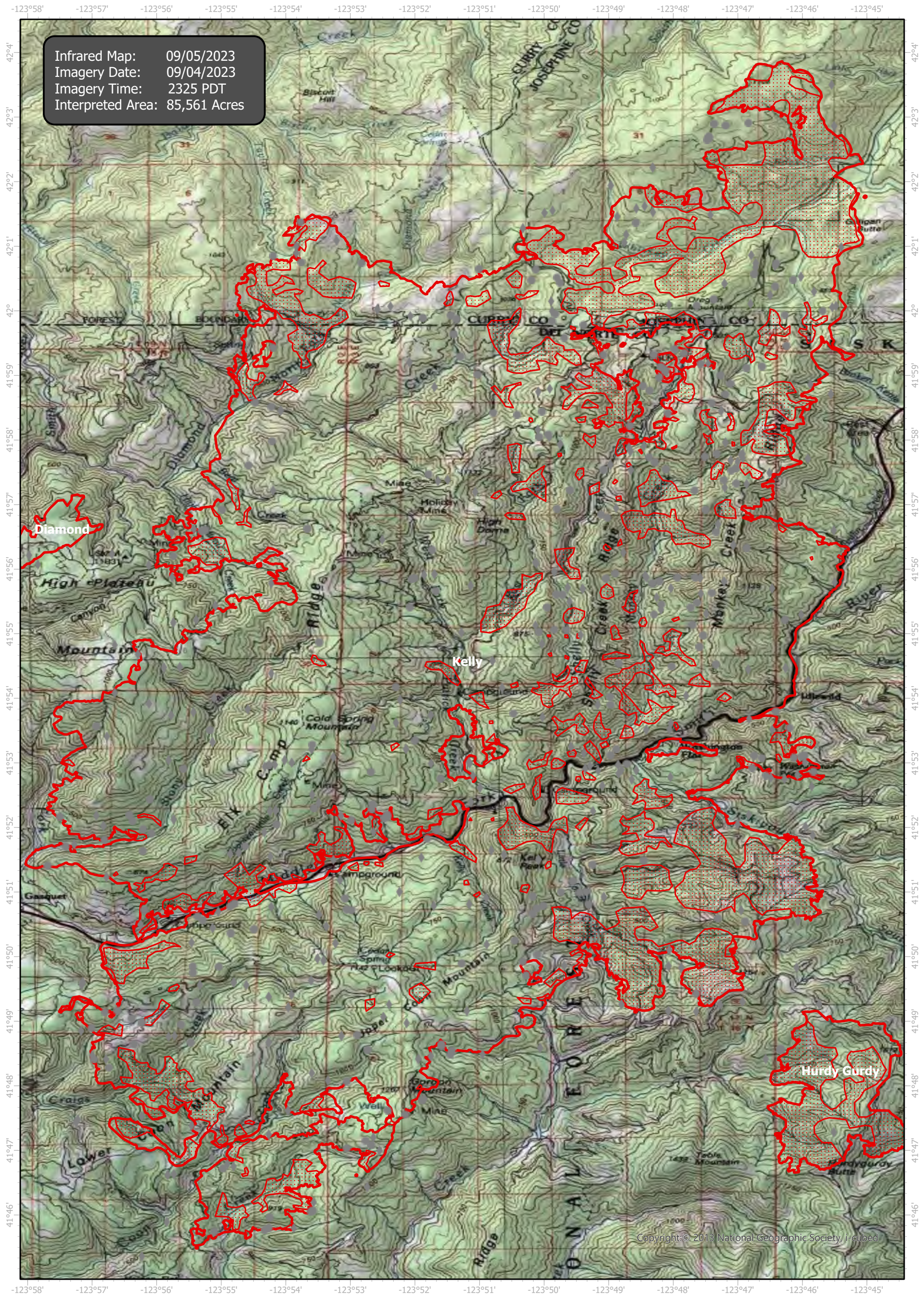


SmithRiverComplex Infrared Map

Incident # (CA-SRF-968) Kelly (80, 725 Acres)



- IR Isolated Heat Source
- ◆ Possible IR Heat Source
- ▭ IR Heat Perimeter
- ▨ IR Scattered Heat

Infrared Interrupter: Daniel LeVrier
email: daniel.levrier@usda.gov