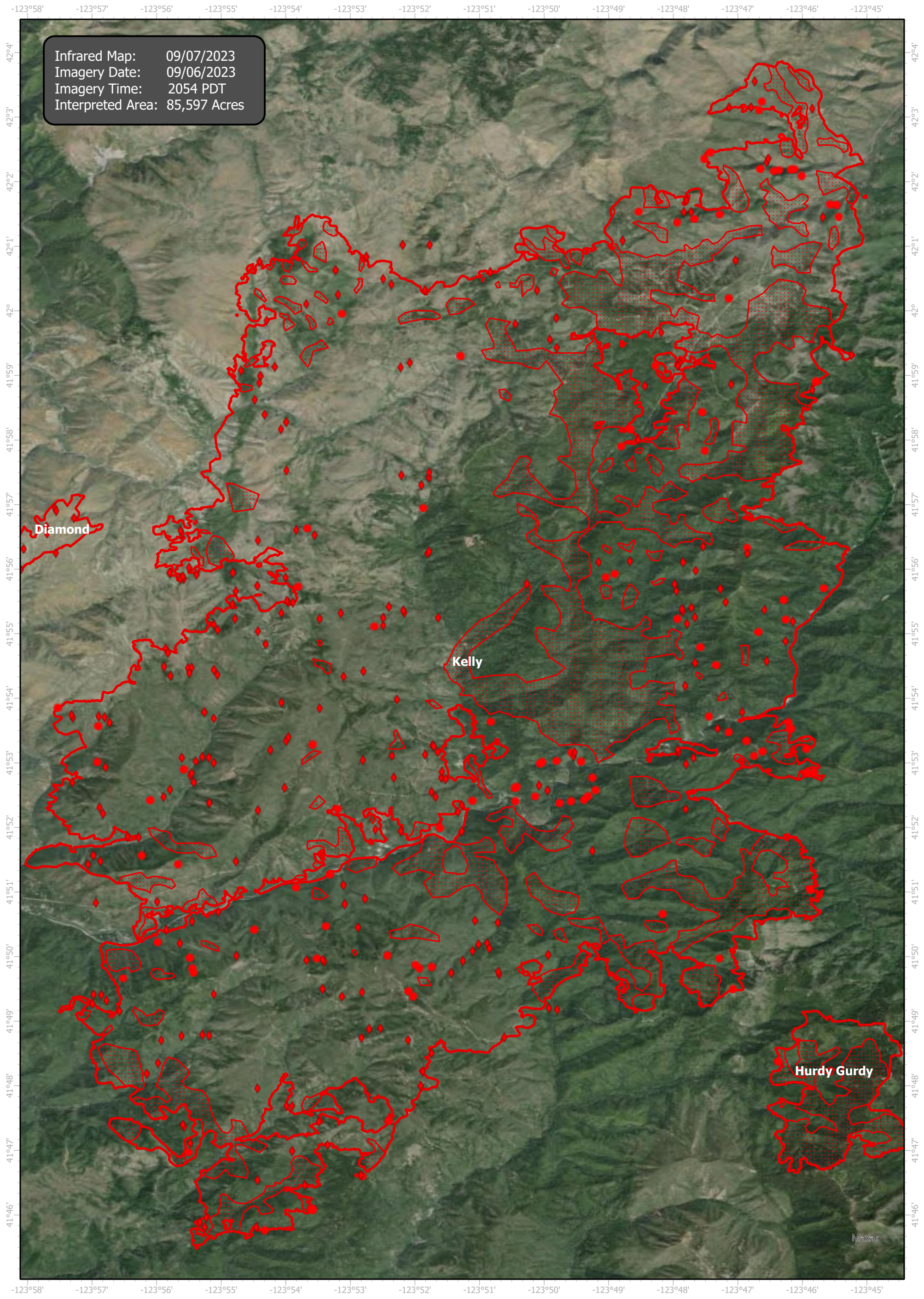
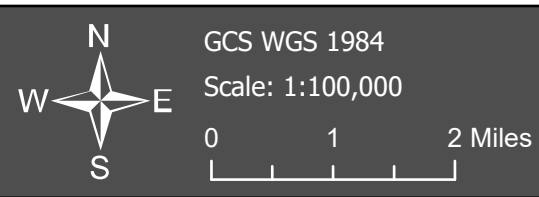


SmithRiverComplex Infrared Map

Incident # (CA-SRF-968) Kelly (80, 741 Acres)



Infrared Map: 09/07/2023
Imagery Date: 09/06/2023
Imagery Time: 2054 PDT
Interpreted Area: 85,597 Acres



- IR Isolated Heat Source
- ◆ Possible IR Heat Source
- ▨ IR Intense Heat
- ▤ IR Scattered Heat
- ▭ IR Heat Perimeter

Infrared Interrupter: Daniel LeVrier
email: daniel.levrier@usda.gov