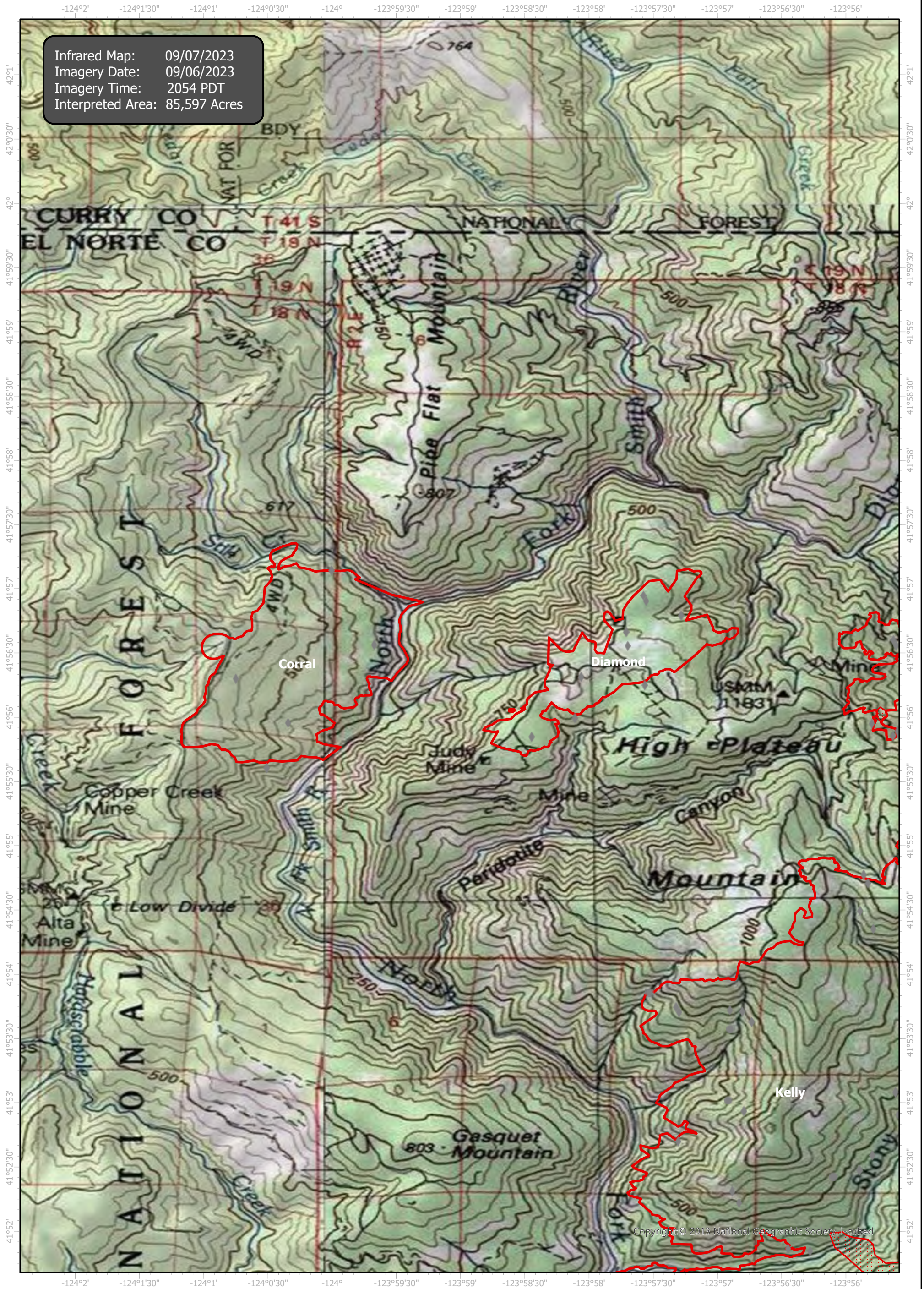


SmithRiverComplex Infrared Map

Incident # (CA-SRF-968W) Corral (1, 090 Acres), Diamond (550 Acres)



Infrared Map: 09/07/2023
Imagery Date: 09/06/2023
Imagery Time: 2054 PDT
Interpreted Area: 85,597 Acres

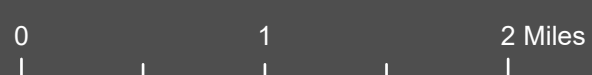


Copyright © 2013 National Geographic Society, Inc.



GCS WGS 1984

Scale: 1:50,000



- IR Isolated Heat Source
- ◆ Possible IR Heat Source
- ▭ IR Heat Perimeter
- ▭ IR Scattered Heat

Infrared Interrupter: Daniel LeVrier
email: daniel.levrier@usda.gov