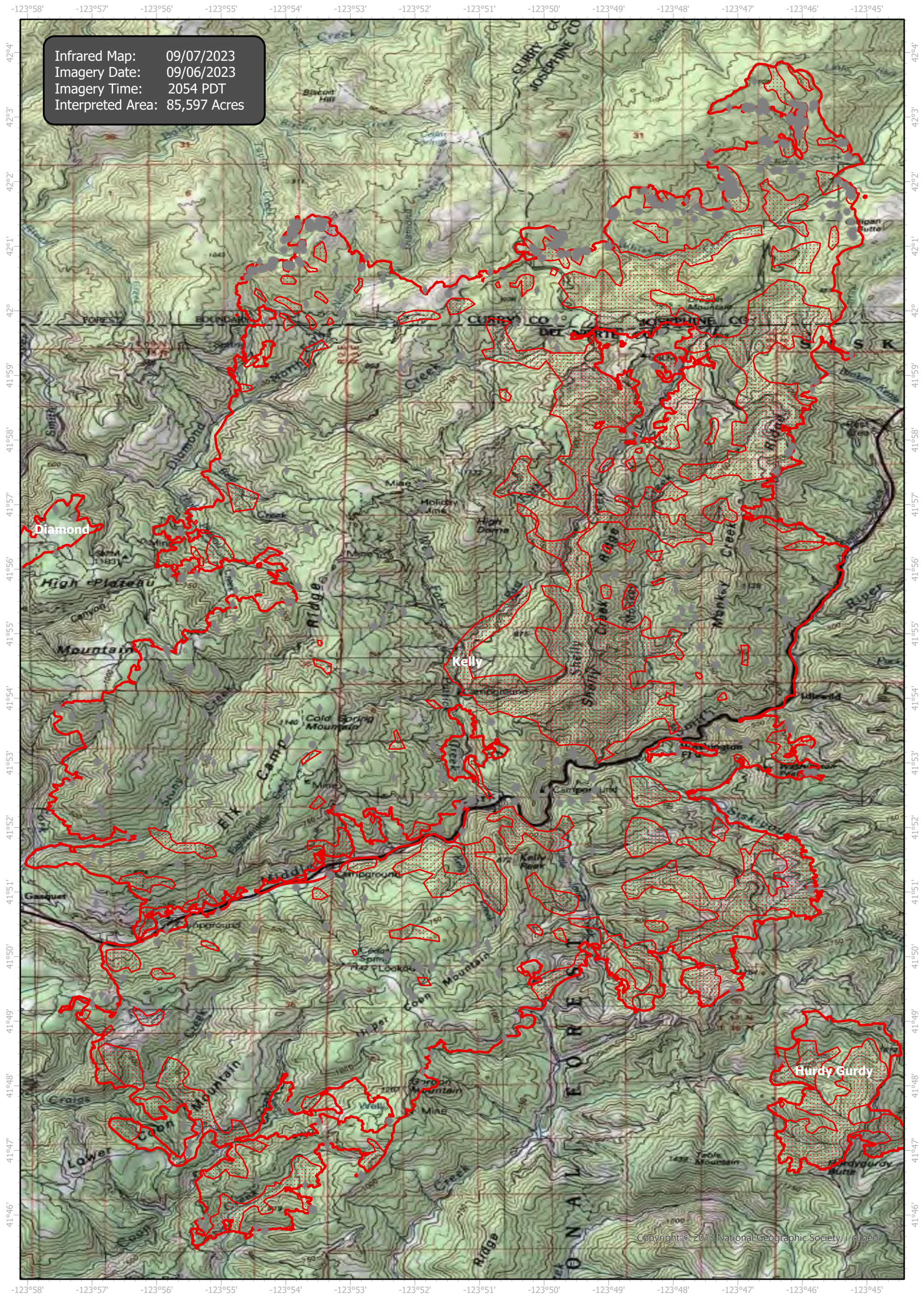


SmithRiverComplex Infrared Map

Incident # (CA-SRF-968) Kelly (80, 741 Acres)



Copyright: © 2013 National Geographic Society, i-cubed



GCS WGS 1984

Scale: 1:100,000



- IR Isolated Heat Source
- ◆ Possible IR Heat Source
- IR Heat Perimeter
- ▨ IR Intense Heat
- ▤ IR Scattered Heat

Infrared Interrupter: Daniel LeVrier
email: daniel.levrier@usda.gov