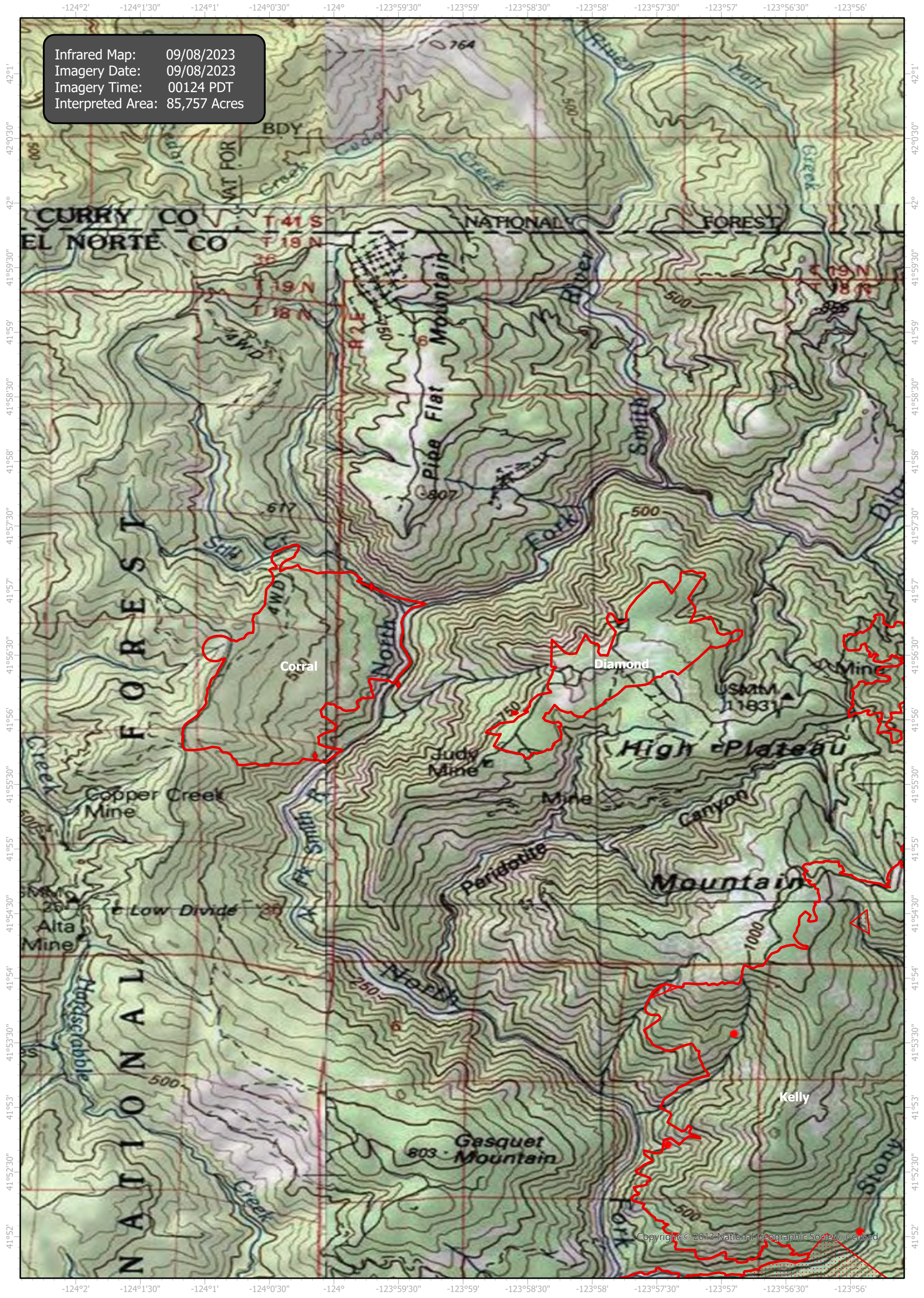



# SmithRiverComplex Infrared Map

Incident # (CA-SRF-968W) Corral (1, 090 Acres), Diamond (550 Acres)



Infrared Map: 09/08/2023  
Imagery Date: 09/08/2023  
Imagery Time: 00124 PDT  
Interpreted Area: 85,757 Acres



W  E  
S

GCS WGS 1984  
Scale: 1:50,000  
0 1 2 Miles

- IR Isolated Heat Source
- ◆ Possible IR Heat Source
- ▭ IR Heat Perimeter
- ▨ IR Intense Heat
- ▤ IR Scattered Heat

Copyright © 2013 National Geographic Society, Inc. Infrared Interrupter: Daniel LeVrier email: daniel.levrier@usda.gov