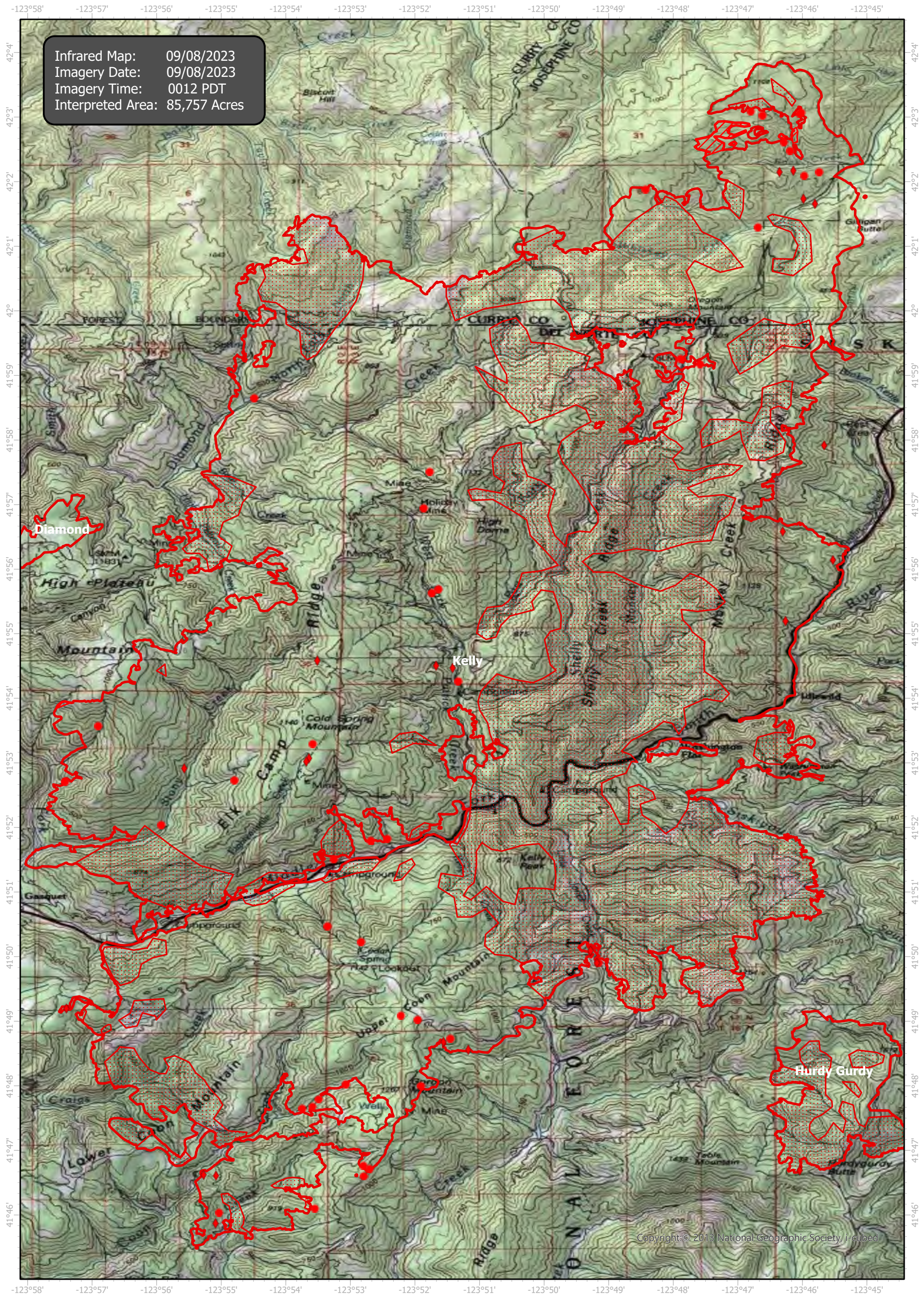


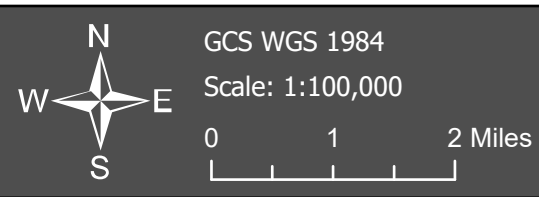
# SmithRiverComplex Infrared Map

Incident # (CA-SRF-968) Kelly (80,901 Acres)



Infrared Map: 09/08/2023  
Imagery Date: 09/08/2023  
Imagery Time: 0012 PDT  
Interpreted Area: 85,757 Acres

Copyright: © 2013 National Geographic Society, I-cubed



- IR Isolated Heat Source
- ◆ Possible IR Heat Source
- ▭ IR Heat Perimeter
- ▨ IR Intense Heat
- ▤ IR Scattered Heat

Infrared Interrupter: Daniel LeVrier  
email: [daniel.levrier@usda.gov](mailto:daniel.levrier@usda.gov)