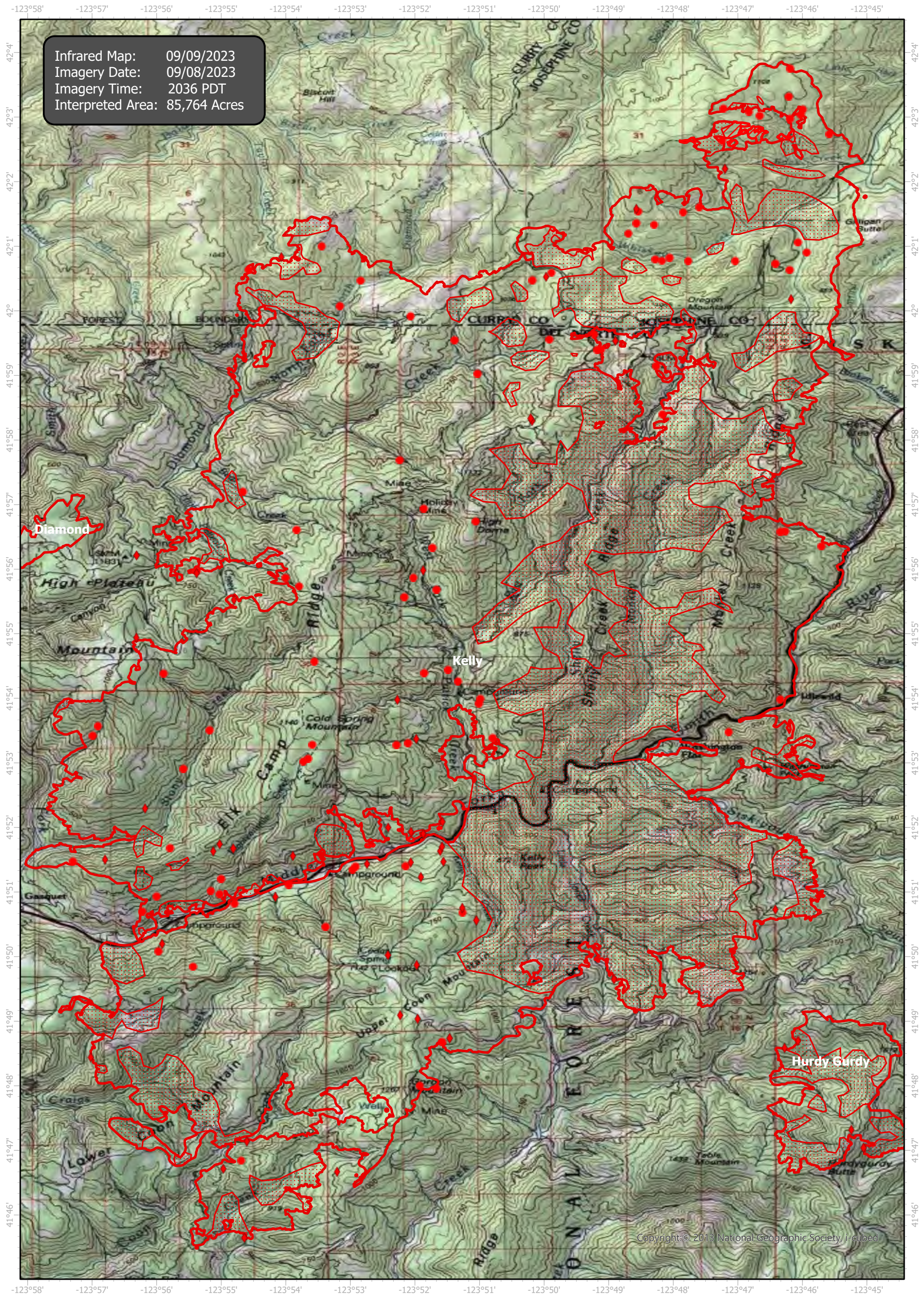


SmithRiverComplex Infrared Map

Incident # (CA-SRF-968) Kelly (80,908 Acres)



Infrared Map: 09/09/2023
Imagery Date: 09/08/2023
Imagery Time: 2036 PDT
Interpreted Area: 85,764 Acres

Copyright: © 2013 National Geographic Society, I-cubed



GCS WGS 1984

Scale: 1:100,000

0 1 2 Miles



- IR Isolated Heat Source
- ◆ Possible IR Heat Source
- ▭ IR Heat Perimeter
- ▨ IR Intense Heat
- ▤ IR Scattered Heat

Infrared Interrupter: Daniel LeVrier
email: daniel.levrier@usda.gov