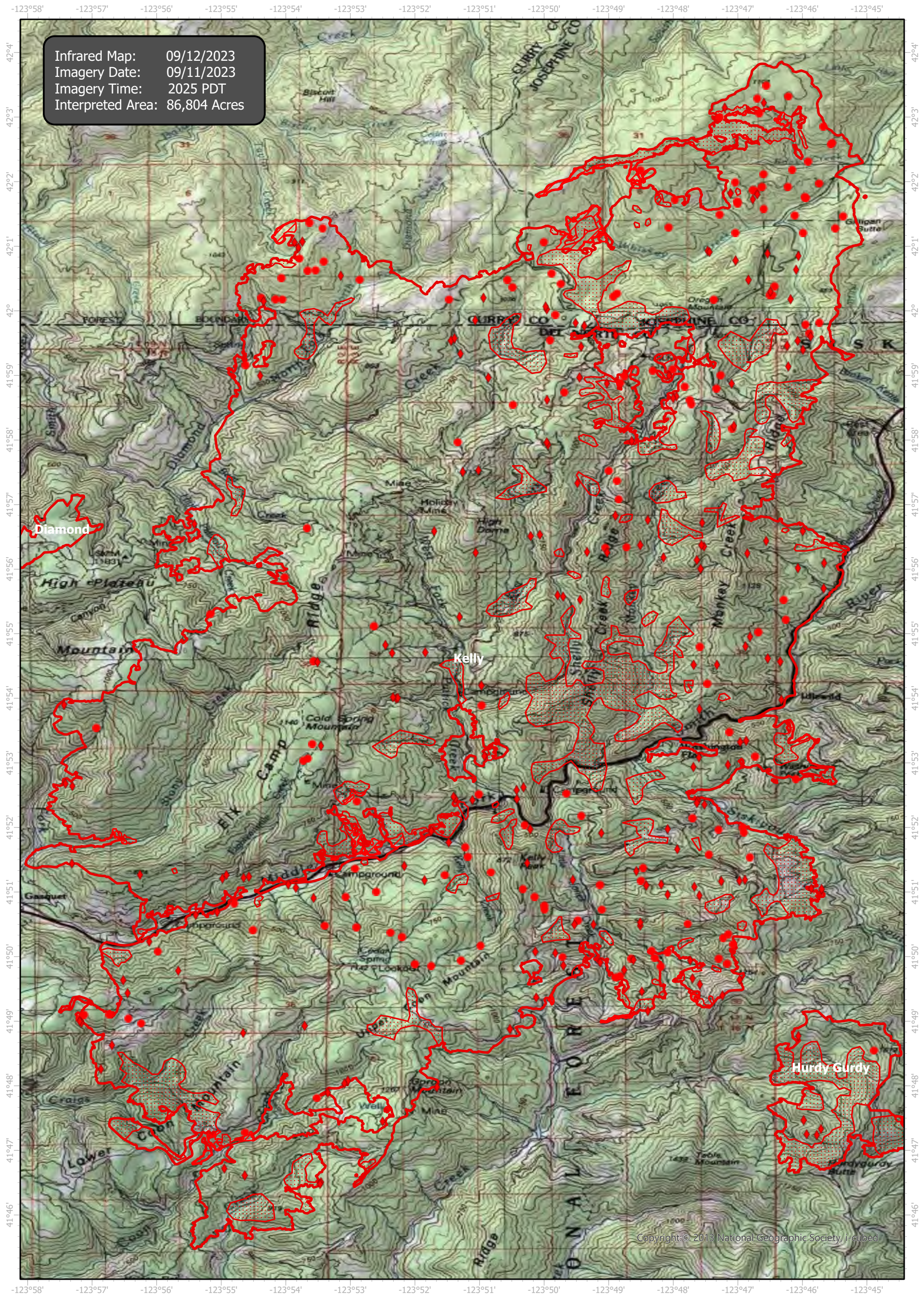


SmithRiverComplex Infrared Map

Incident # (CA-SRF-968) Kelly (81,936 Acres)



Infrared Map: 09/12/2023
Imagery Date: 09/11/2023
Imagery Time: 2025 PDT
Interpreted Area: 86,804 Acres

Copyright: © 2013 National Geographic Society, i-cubed

N
W E
S

GCS WGS 1984
Scale: 1:100,000

0 1 2 Miles

- IR Isolated Heat Source
- ◆ Possible IR Heat Source
- ▭ IR Heat Perimeter
- ▨ IR Intense Heat
- ▤ IR Scattered Heat

Infrared Interrupter: Daniel LeVrier
email: daniel.levrier@usda.gov