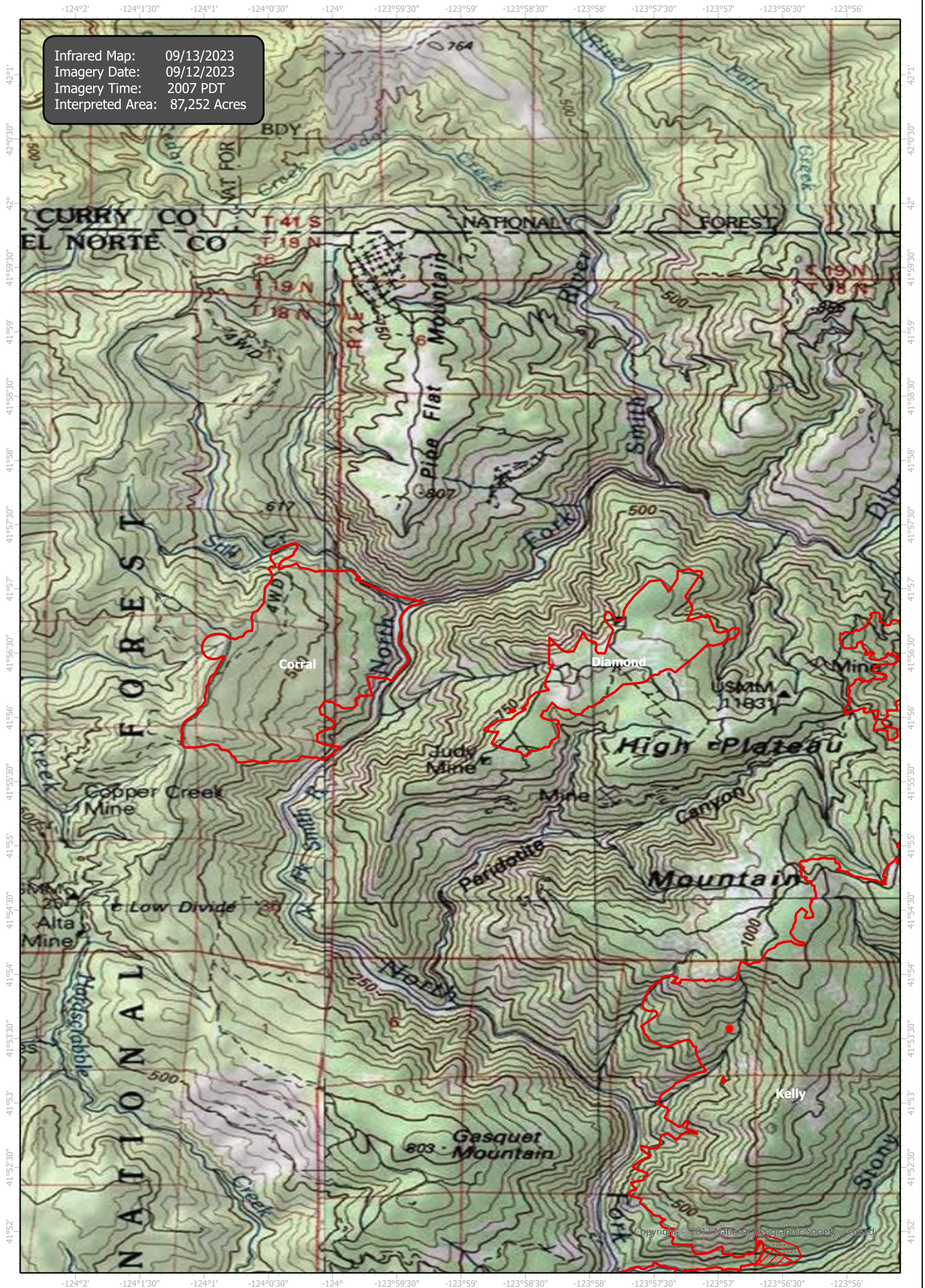


# SmithRiverComplex Infrared Map

Incident # (CA-SRF-968W) Corral (1, 090 Acres), Diamond (550 Acres)



Infrared Map: 09/13/2023  
Imagery Date: 09/12/2023  
Imagery Time: 2007 PDT  
Interpreted Area: 87,252 Acres

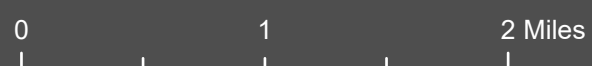


Copyright © 2013 National Geographic Society, Inc.



GCS WGS 1984

Scale: 1:50,000



- IR Isolated Heat Source
- ◆ Possible IR Heat Source
- ▭ IR Heat Perimeter
- ▨ IR Intense Heat
- ▤ IR Scattered Heat

Infrared Interrupter: Daniel LeVrier  
email: daniel.levrier@usda.gov