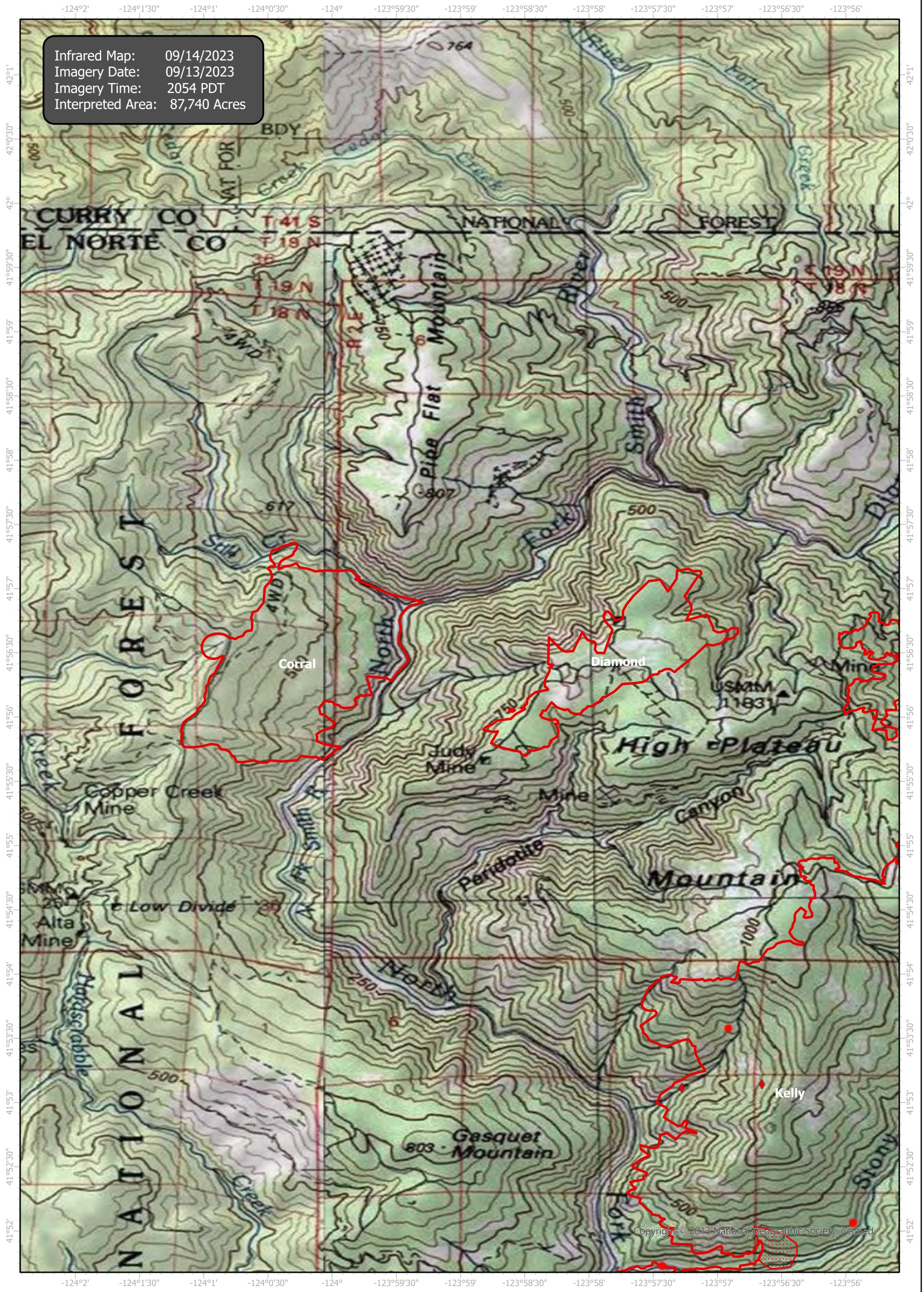


SmithRiverComplex Infrared Map

Incident # (CA-SRF-968W) Corral (1, 090 Acres), Diamond (550 Acres)



Infrared Map: 09/14/2023
 Imagery Date: 09/13/2023
 Imagery Time: 2054 PDT
 Interpreted Area: 87,740 Acres



Copyright © 2013 National Geographic Society, Inc.



GCS WGS 1984
 Scale: 1:50,000



- IR Isolated Heat Source
- Possible IR Heat Source
- ▭ IR Heat Perimeter
- ▭ IR Scattered Heat

Infrared Interrupter: Daniel LeVrier
 email: daniel.levrier@usda.gov