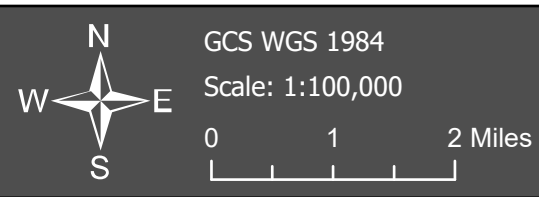
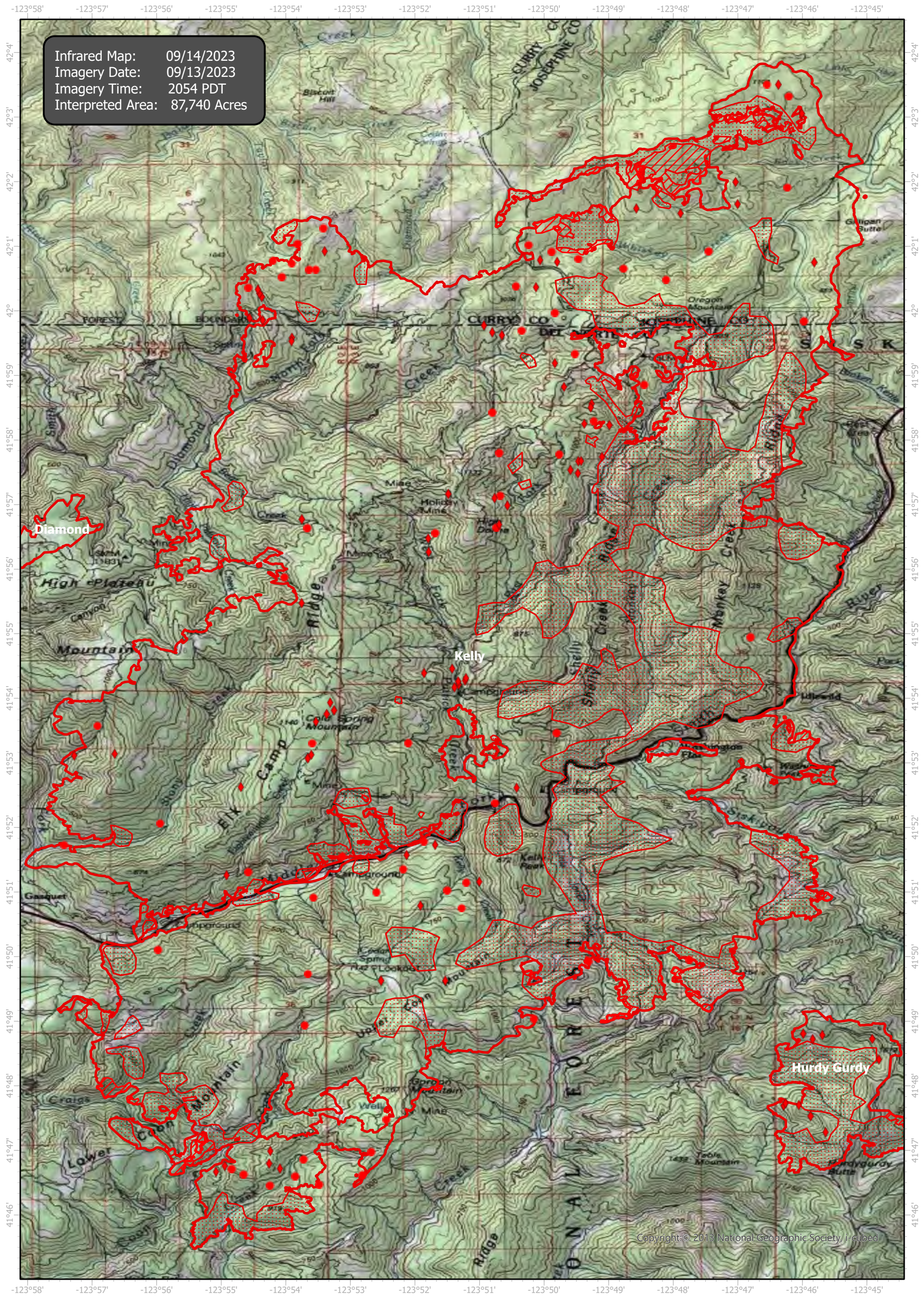


# SmithRiverComplex Infrared Map

Incident # (CA-SRF-968) Kelly (82,868 Acres)



- IR Isolated Heat Source
- ◆ Possible IR Heat Source
- ▭ IR Heat Perimeter
- ▨ IR Intense Heat
- ▩ IR Scattered Heat

Infrared Interrupter: Daniel LeVrier  
email: [daniel.levrier@usda.gov](mailto:daniel.levrier@usda.gov)