

2023 SRF LIGHTNING COMPLEX INCIDENT ACTION PLAN

FRIDAY



SCAN FOR INCIDENT INFORMATION

CA-SRF-000986

P5QKB4 (0510)



OPERATIONAL PERIOD

08/25/2023 – 08/26/23

0700 HRS - 0700 HRS



FRIDAY

INCIDENT OBJECTIVES (ICS 202)	1. INCIDENT NAME: SRF Lightning Complex	2. DATE: 8/24/2023	3. TIME: 1900 hrs.
--------------------------------------	--	-----------------------	-----------------------

4. OPERATIONAL PERIOD (DATE/TIME):
08/25/2023 thru 08/26/2023
0700 to 0700



5. OBJECTIVES:

Strategic Framework

Confine, contain, or control all fires utilizing a full suppression strategy. Values at risk include human safety, private timberlands, communities, cultural, critical infrastructure, and associated improvements. Apply tactics that offer the highest probability of success.

Leaders Intent

Provide the highest level of customer service to all involved with or impacted. Ensure transparent, timely and accurate communication at all levels of the incident and strengthen relationships with cooperators. All incident assigned personnel should be prepared to take appropriate actions regarding:

- Personal safety and the safety of others, including driving slowly and defensively.
- Manage fatigue by taking breaks and maintaining work/rest cycles.
- Minimize risk and limit exposure to infectious disease by implementing Center of Disease Control, California Department of Public Health, and agency guidelines.
- Professional behavior, and timely/effective communication.

Management Objectives

- Prior to engagement, stop and discuss strategies and tactics to ensure sound risk management principles are in place to provide for firefighter and public safety.
- Implement fire suppression activities in accordance with Incident Resource Advisors.
- Minimize impacts to cultural, resources, infrastructure, and private property inholdings.

Control Objectives

Keep Fires within the Six Rivers National Forest:

- Within remote National Forest areas to protect heritage, cultural, natural resources.
- East of Hoopa, Orleans and Hwy 96 to protect the communities along the Klamath River corridor.

Keep Fires within the Redwood National Park:

- As small as possible and within park lands to protect old growth redwoods, private timber land and cultural values.

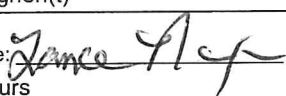
Site Safety Plan Required: Yes No Approved Site Safety Plan Located at:

9. Attachments (if attached):

<input checked="" type="checkbox"/> Organization List (ICS 203)	<input checked="" type="checkbox"/> Safety Message	<input type="checkbox"/> Incident Phone List	<input type="checkbox"/> Logistics Message
<input checked="" type="checkbox"/> Weather Forecast	<input type="checkbox"/> Risk Analysis (ICS 215A)	<input checked="" type="checkbox"/> Finance Message	<input type="checkbox"/> READ Message
<input checked="" type="checkbox"/> Fire Behavior Forecast	<input checked="" type="checkbox"/> Medical Plan (ICS 206)	<input checked="" type="checkbox"/> Info / Pio Message	<input type="checkbox"/> Dmob - Plan / Pending
<input checked="" type="checkbox"/> Incident Assignments (ICS 204)	<input checked="" type="checkbox"/> Medical Report - 8 Line	<input checked="" type="checkbox"/> Human Resource	<input checked="" type="checkbox"/> Maps - Travel / Camp
<input checked="" type="checkbox"/> Air Ops (ICS 220)	<input checked="" type="checkbox"/> Communication Plan (ICS 205)	<input checked="" type="checkbox"/> Training Message	<input checked="" type="checkbox"/> Unit Log (ICS 214)

10. PREPARED BY (PLANNING SECTION CHIEF) <i>Lawrence Hoy</i>	11. APPROVED BY (INCIDENT COMMANDER) <i>[Signature]</i>
---	--

ORGANIZATION ASSIGNMENT LIST (ICS 203)

1. Incident Name: 2023 SRF Lightning Complex		2. Operational Period: Date From: 8/25/2023 Date To: 8/26/2023 Time From: 0700 Time To: 0700		
3. Incident Commander(s) and Command Staff:		7. Operation Section:		
IC/UC's	Nickie Johnny	Operations	Patrick Russell, Travis Thane(t)	
Deputy	Curtis Coots, John Goss(t)	Planning Ops	Matt Conklin, Kristian Litz(t)	
Safety Officer	John Nickey, Linda Ferguson, Doug McKelvey, Matt Lipson Anna Maria Echeverria			
Information Officer	Deanna Younger, Daron Wyatt, Jim Mackensen	Staging Area		
Liaison Officer	Robbin Ekman, Dennis Rein, Ray Torres(t)	Branch	V	
4. Agency/Organization Representatives:		Division/Group	A	Shawn Woodbury, Adams Stevens(t)
Agency/Organization	Name	Division/Group	D	Orlando Genao, Curtis Wayka(t)
NPS-AA	Steve Mietz	Division/Group	H	Unstaffed
NPS-AREP	Mike Minton	Division/Group		
Forest Service AA	Ted McArthur	Division/Group		
Forest Service AREP	Nolan Colegrove, Jen Dyer(t)	Branch	X	Rod Mendes, Mike Hildebrand (t)
Hoopla Tribe	Greg Moon	Division/Group	J	Anna Wright, Ry Phipps(t)
Karuk Tribe	Vicki Preston	Division/Group	Y	Robert McClellan, Jamie Willburn(t)
Yurok Tribe	Rod Mendes	Division/Group	Z	Jason McCarty, Greg Herrera(t)
CalFire AREP	Sean Norman	Division/Group	Structure Grp	Brian Heath, Mike Evers(t)
BIA AA	Nathan Gogna	Division/Group	R	Eric Darragh
BIA AREP	Shane Santos	Division/Group	T	Unstaffed
PG&E	Donovan Lee	Division/Group	U	Unstaffed
PG&E	Daren Dalrymple	Division/Group		
CCC AREP	Benjamin Herbert	Division/Group		
		Branch	XX	Ian Morgan, Nathan Arellano
		Division/Group	M	Brian Brennan, Mike Gawronski (t)
		Division/Group	N	Brendon Banwell, Geoffrey Phelan (t)
5. Planning Section:		Branch	XL	Jake Akerberg, Jason Dyer
Chief	Lance Noxon, Aaron Grove,	Division/Group	AA	
Deputy	Justin Saiz(t)	Division/Group	ZZ	
Resource Unit	Jeff Ferguson, Jay Shaffer, Alyssa Thornburg(t), Jennifer Dean(t)	Division/Group	DD/GG	
Situation Unit	Jeff Chung(t)	Division/Group	Contingency	Russ Mitchell, Andrew Davenport(t)
Documentation Unit		Division/Group		
Demobilization Unit		Branch		
GISS	Carvel Bass	Division/Group	NIGHT	Unstaffed
FBAN	Dennis Burns	Division/Group		
IMET	Rececca Muessle	Division/Group		
Training Tech Spec	Dominic Panno	Air Operations Branch		Director:
SCKN	Stephen Gillette, Aimee Lorincz Matthew Earl, Scott Cichoracki		AOBD	Terry Harris
Lead Read	Erin Rentz (ICP) Emma McClure (Lost)	Air Attack Group Supervisor		
6. Logistics Section		Air Support Group Supervisor		Kelvin McElfish
Chief	Tom Crakes, Jeremiah Green (Orleans) PM Clarity(t)			
Supply Unit	Mani Bouslaugh	8. Finance/Administration Section:		
Facilities Unit	Stephen McNaughten, Rod Torres	Chief	Larry Lee, Tracy Falls(t), Rob Taylor(t)	
Ground Support Unit	Dave Trussel	Time Unit	Terrell Hope	
Communications Unit	David Paschke, Kody Kerwin	Procurement Unit	Maggie Prochazka	
Medical Unit	Scott Mohlenbrok, Josh Rubinstein, Christopher Schilling	Comp/Claims Unit	Cassandra Avila	
ITSS	Gerald Fong, Terri Miller	Cost Unit	Matt Gagnon(t)	
Prepared By: Name:	Lance Noxon, Aaron Grove,	Position/Title:	PSC	Signature: 
ICS 203		Date/Time:	8/24/2023 2300 hours	<small>NIMS IAP</small>



2023 SRF Lightning Complex (Branches XX, X & V) Weather Forecast



FORECAST NO: 8
FORECAST FOR: Fri, Aug 25th Day/Night Shift
FORECAST ISSUED: Aug 24, 2023, 1900 PDT

NAME OF FIRE: 2023 SRF Lightning Complex
SIGNED: /s/ Rebecca Muessle - IMET
PHONE NUMBER: (971)394-0798

WEATHER DISCUSSION: More settled weather as low pressure returns to the coast. Return to diurnally driven wind. East to northeast in the morning transitioning to the west-northwest in the afternoon. Exposed ridgetops will see the gustiest conditions from both directions during the peak swing in temperatures. Marine stratus will move into the coast and elevations below 1000 ft. Stratus will be stagnant with minimal mixing. Fog likely below the inversion at 1000 ft but will lift when temperatures begin to rise.

For Lost Fire weather, please see next page

FORECAST FOR TODAY: Partly cloudy (25-35%) skies becoming clear in the late morning. Patchy fog and settled smoke in Branch X within the valleys and near the ICP. General onshore flow so temperatures will be mild and daytime humidity will be above critical levels. Inversion lifts around 1330. Lingering smoke will dampen temperatures.

Branch XX Fires:

Branch V & X Fires:

Max Temperature: 78-86°	Max Temperature: 80-89°
Min RH: 38-48%	Min RH: 32-40%
20 FT Winds	20 FT Winds
Slopes/Valleys: NE 2-4 mph becoming NW 4-7 mph with gusts up to 12 mph	Slopes/Valleys: NE 2-5 mph becoming NW 5-9 mph with gusts to 15 mph
Ridges: NE 4-6 mph with gusts to 12 mph becoming NW 8-11 mph with gusts up to 18 mph	Ridges: NE 2-5 mph becoming NNW 8-11 with gusts up to 19 mph

OUTLOOK FOR TONIGHT: Partly cloudy (25-35%) through the night which will cause lower temperatures. Inversion will establish after 2300 at 1000 ft which will cause smoke to settle into the valleys. Humidity recovery will be less favorable in areas that remain clear or above the inversion.

Branch XX Fires:

Branch X & V Fires:

Min Temperature: 55-59°	Min Temperature: 50-61°
Max RH: 68-80%	Max RH: 75-91%
20 FT Winds	20 FT Winds
Slopes/Valleys: NW 4-7 mph becoming NE less than 5 mph.	Slopes/Valleys: NW 2-4 mph becoming downslope
Ridges: NW 5-7 mph becoming NE 5-7 mph with isolated gusts up to 13 mph	Ridges: NW 4-6 mph with gusts up to 11 mph becoming NE 3-6 mph.

OUTLOOK FOR SATURDAY: Minimal changes as the pattern remains stagnant. The inversion will fill in right before sunrise which will cause smoke to sink into valleys and drainages. Onshore flow will dominate the region with diurnal winds. North-northeast in the morning becoming westerly in the afternoon. Temperatures will be seasonable with highs in the low to mid 80s, though cooler in areas that remain under smoke through the day. Low temperatures will see little change from the previous night in the low to mid 50s. Humidity will follow a similar trend as previous days.



2023 SRF Lost Fire Spot Weather Forecast



FORECAST NO: 5
FORECAST FOR: Fri, Aug 25th Day/Night Shift
FORECAST ISSUED: Aug 24, 2023, 1900 PDT

NAME OF FIRE: 2023 SRF Lightning Complex
SIGNED: /s/ Rebecca Muesle - IMET
PHONE NUMBER: (971)394-0798

Discussion: Weather will settle and return to a typical summer pattern. Onshore flow will maintain marine stratus in the morning, and cooler air will enhance the inversion layer that keeps it trapped at the surface. Northeasterly winds overnight will become northwesterly during the afternoon. Exposed ridges will see the highest gusts - especially in the southern portion of the Redwoods. Favorable overnight humidity recoveries.

For Branches XX, X, & V fire weather, please see previous page

FORECAST FOR TODAY:

Valleys & Slopes (below 1000 ft)	Ridgetops and Above 1000 ft
Max Temperature: 72-79°	Max Temperature: 73-83°
Min RH: 51-58%	Min RH: 38-50%
20 FT Winds: Variable becoming upslope 5-9 mph	20 FT Winds: East 6-9 mph then W 9-12 mph with gusts to 18 mph

OUTLOOK FOR TONIGHT:

Valleys & Slopes (below 1000 ft)	Ridgetops and Above 1000 ft
Min Temperature: 51-58°	Min Temperature: 50-60°
Max RH: 89-97%	Max RH: 76-88%
20 FT Winds: NW becoming drainage 2-5 mph	20 FT Winds: W 7-10 mph becoming NE 6-9 mph with gusts up to 16 mph

OUTLOOK FOR SATURDAY: Minimal change in the conditions as the broad low pressure system remains nearly stationary over the coast. This will be the trend for the next few days. The pattern will lead to a rinse and repeat of marine stratus moving into the lowest levels of the fire, with the inversion forming at 1000 ft. The inversion will aid in keeping the stratus in place through much of the day until after 1300 when we will see partial clearing. With trapped smoke and sky cover, temperatures will be a few degrees cooler than previous days (around 70-75 degrees) and humidity ranging from near 55% in the lower elevations, and 45% above the inversion. Overnight, humidity recoveries will be high, and temperatures will trend on the warmer side.

FIRE BEHAVIOR FORECAST

FORECAST NUMBER: 7	TYPE OF FIRE: Wildfire
FIRE NAME: SRF Lightning Complex	OPERATIONAL PERIOD: August 25, 2023 24hr
DATE ISSUED: 8/24/23	TIME ISSUED: 1800
UNIT: CA-SRF	SIGNED: _____ Typed/printed: Dennis Burns/s/

INPUTS

WEATHER SUMMARY: ***Warm and Dry***
Temps: Inland Day 78-89 Night 54-61 Redwood Day 72-83 Night 50-60
RH: Inland Day 32-48% Night 80-91% Redwood Day 38-58% Night 76-97%
Winds: Day Inland NW 4-7mph gusts to 12mph. Redwood W 9-12 gusts to 18mph.
Night Inland NE 4-7mph Redwood NE 6-9mph gusts to 16mph.

FUELS SUMMARY: Dense mixed conifer, old-growth timber, heavy dead/down, mixed ground fuels.

OUTPUTS

FIRE BEHAVIOR

GENERAL:

Expect active fire behavior once the inversion mixes out, this includes single and group tree torching with short crown runs on aligned slopes. Primary fire spread will be active backing surface fire. Roll out will also contribute to fire spread. Rapid upslope runs are possible when fire reaches drainage bottoms and reverses slope. Spotting from torching trees will be in the range of 400 feet. With the large amount of snags, surface fire will be resistant to control. With the steep multiple intersecting drainages, active fire has a high probability of generating fire whirls.
Probability of ignition 70%
If any resources are dispatched to assist with IA expect moderate to rapid rates of spread with mainly surface fire and some torching in the denser tree stands.

SPECIFIC:

Branch X: No forward fire progression is expected fire behavior will be smoldering and creeping.

Branch XX: Expect active backing and flanking fire spread. Keep a heads up for fire spread or rollout that could lead to slope reversals. Fire established on an aligned slope will have rapid rates of spread and the potential for short crown runs. With the heavy dead down component, fires will be resistant to control. Expect active surface fire with single and group tree torching, with the fires located on exposed ridges, keep a heads up for spot fires from the torching trees.

Redwood Fires: Lost Fire: Expect backing fire with minimal flame lengths. Some single and group tree torching is probable with short range spotting. Keep a heads up for fire movement south across Lost Man Creek which will lead to a slope reversal up Holter Ridge. 100-1000hr fuels are what is carrying the fire. Devil and Glen Fires: Continued smoldering with no new forward fire movement expected.

Night Shift: With the RH recovery minimal forward fire progression is expected on any of the fires.

AIR OPERATIONS: Expect the smoke to limit air operations until the inversion mixes out, potentially as late as 1430.

SAFETY

- Make sure Lookouts are posted in places where they can see potential spotting.
- Fire weakened timber poses a threat to personnel working in timber areas.

Incident:

SRF Lightning Complex CA-SRF-000986

Date:

9-25-2023 to 9-26-2023

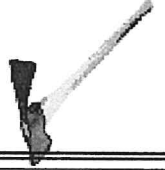
Operational Period:

0700-0700



SAFETY MESSAGE

Fire fighter safety comes first on every fire, every time



Major Hazards and Risks:

Boil Water Notice: The community of Orleans is in a Boil Water Notice. All fire personal only use drinking water from Orleans Spike Camp. Do not use and/or consume any drinking water in the Orleans Community.

Saw Use: Heads up for fire weakened trees, identify and flag hazard. Make sure you follow your agency policy on Fireline Power Saw Use. Have all proper PPE from hiking to and from work site, bucking and falling. Use lookouts for falling operations and keep area clear 2 ½ times the height of the tree. Know where your saw tips is at all times when cutting. **See IRPG page 20.**

Power lines: Remember to LOOK UP, LOOK DOWN & ALL AROUND! These are aerial hazards, as well. **Treat all powerlines as live!** Flag areas where lines are down and report this through your divisions to Safety.

Indirect Line Construction

- Does your work area have the most exposure to indirect line hazards.
- Establish strong, positive LCES that doesn't solely rely on aircraft.
- Construct Safety Zones as needed to progress at intervals appropriate for the fuels and fire progression speeds.

Establish trigger points that give ample time to disengage and depart the area without resorting to a mad scramble. Make sure you include conversation for the long travel times on this fire.

IWI-Incident Within an Incident

As the fire progresses the hazards and operations change. What does not change, is the constant threat of experiencing an incident within the incident. Are you ready?

- Discuss the process with your crew
- Know and brief the communication plan to request assistance.
- Teach the procedure to others in case it is **you** that needs help.
- Consider your position on the fire relative to reflex time of resources.
- Be clear about your needs when initiating an IWI.

Train like you fight so you'll fight like you've trained!

Team Safety Officers: Linda Ferguson, Annamaria Echeverria, John Nickey, Doug McKelvey, Matt Lipson

ASSIGNMENT LIST (ICS 204 WF)

CONTROLLED UNCLASSIFIED
INFORMATION/BASIC

1. Incident Name: 2023 SRF Lightning Complex		2. Operational Period: Date From: 08/25/23 Date To: 08/26/23 Time From: 0700 Time To: 0700		3. Branch X		Division J		
4. Operations Personnel:		Operations Section Chief: Patrick Russell, Travis Thane(t)		Night Ops:		Page 1 of 2		
		Branch Director: Rod Mendes, Mike Hildebrand (t)		Branch Safety:		Juliet		
		Division/Group Supervisor: Anna Wright, Ry Phipps(t)		Air Attack:				
5. Resources Assigned:		**RESOURCES IN BOLD ARE 12HR, UNBOLDED ARE 24HR**						
Resource Identifier	ALS	LWD	Leader	Personnel	Request #	Hours	Reporting Location	
HC1 FULTON IHC		8/26	Josh Acosta	23	C-2	0700-2100	Orleans Spike	
S/T HC2IA CA SBC 1546G		9/1	Tyler Gilliom	35	C-45	0700-2100	Orleans Spike	
HC21A BUZZARD CREEK		8/30	Daniel Renner	20	C-2	0700-2100	Orleans Spike	
HC2IA PVT AYE GARCIA C-11		9/1	Noel Solis	20	C-11	0700-2100	Orleans Spike	
HC2 FRANCO C-6			Leo Rasch	20	C-6	0700-2100	Orleans Spike	
HC2 MOUNTAINEER CONTRACTING		9/4	Jesus Ramos	20	C-44	0700-2100	Orleans Spike	
HC2 JD FORESTRY C-18		9/3		20	C-18	0700-2100	Orleans Spike	
ENG4 ID-BOF 413		8/30	Paul Mitchell	6	E-2	0700-2100	Orleans Spike	
ENG6 CO-ARF 654		9/5	Robert Lemay	6	E-99	0700-2100	Orleans Spike	
ENG6 CRANES WILDFIRE		9/5	Don Crane	3	E-149	0700-2100	Orleans Spike	
ENG6 FIREANT 326		9/5	Chris Anthis		E-150	0700-2100	Orleans Spike	
ENG6 EAGLE FIRE		8/31	John Bradshaw	3	E-153	0700-2100	Orleans Spike	
ENG6 UINTAH FIRE BRUSH 41		8/31	Patrick Berry	3	E-154	0700-2100	Orleans Spike	
ENG6 MT ROSE 33		9/5	Cameron Moore		E-155	0700-2100	Orleans Spike	
ENG6 AMERICAN FIRE COMPANY		9/5	Kate Webber	3	E-158	0700-2100	Orleans Spike	
ENG6 A1 FIRESTORM 5		9/5	Donald Lafferty	3	E-162	0700-2100	Orleans Spike	
DOZ2 DARRAH LOGGING 1077		9/5		1	E-6	0700-2100	Orleans Spike	
DOZ2 CHAMBERS LOGGING			Daniel Linton		E-19	0700-2100	Orleans Spike	
6. Work Assignments: Construct control line and improve the connecting motorway from the J/Z break to the north to limit western fire progression and to mitigate fire impact to the Orleans communities. Utilize indirect firing strategies to secure control lines and to reduce fire intensity on impact.								
7. Special Instructions: Coordinate with READs to validate control line locations prior to implementation. Do not use community hydrants unless there is fire impact to values at risk. Utilize drafting as primary water source. CULS Nick Hillman, Jessica Conrad working across DIV J and DIV Z. Matt Lipson SOF1 is working across BR X.								
8. Communications								
Name	Ch	Function	Rx Freq	Rx Tone	Tx Freq	Tx Tone	Mode	Notes
NIFC C44	2	COMMAND	170.7625	(T7) 167.9	165.6250	(T7) 167.9	A	Tone 7
VFIRE 23	7	TACTICAL	154.2950	(T6) 156.7	154.2950	(T6) 156.7	A	Tone 6
A/G 43	14	TACTICAL	167.6000		167.6000		A	
CALCORD	15	TACTICAL	156.0750	(T6) 156.7	156.0750	(T6) 156.7	A	MEDICAL A/G
AIR GUARD	16		168.6250		168.6250	(T1) 110.9	A	
9. Prepared by: Name:		Jeff Ferguson, Jay Shaffer, Alyssa Thornburg(t), Jennifer Dean(t)			RESL		Signature: _____	
ICS 204	Date/Time: 8/24/2023 2200			Personnel Count: 186				

ASSIGNMENT LIST (ICS 204 WF)

CONTROLLED UNCLASSIFIED
INFORMATION//BASIC

1. Incident Name:			2. Operational Period:				3. Branch		Division	
2023 SRF Lightning Complex			Date From: 08/25/23		Date To: 08/26/23		X		J	
			Time From: 0700		Time To: 0700		Page 2 of 2		Juliet	
4. Operations Personnel:										
Operations Section Chief: Patrick Russell, Travis Thane(t)						Night Ops:				
Branch Director: Rod Mendes, Mike Hildebrand (t)						Branch Safety:				
Division/Group Supervisor: Anna Wright, Ry Phipps(t)						Air Attack:				
5. Resources Assigned:										
RESOURCES IN BOLD ARE 12HR, UNBOLDED ARE 24HR										
Resource Identifier	ALS	LWD	Leader	Personnel	Request #	Hours	Reporting Location			
DOZ2 PVT BUSHY FARMS E-20		8/31	Gary Purgason		E-20	0700-2100	Orleans Spike			
EXC MOORE		9/2	Sonny Moore	2	E-16	0700-2100	Orleans Spike			
EXC LASSON		9/3	Baker	2	E-113	0700-2100	Orleans Spike			
WT2 PVT BLACK KNIGHT			Dustin Harner	1	E-19	0700-2100	Orleans Spike			
FMOD NORTH ZONE FALLERS		8/30	Mike Robins	2	O-22	0700-2100	Orleans Spike			
FMOD UNDERDOG TIMBER FALLERS		8/31		2		0700-2100	Orleans Spike			
FMOD SWEDBERG CONTRACTING			Gary Schaffer	2	O-241	0700-2100	Orleans Spike			
FMOD MOEN		9/6	Gary Balmain	2	O-236	0700-2100	Orleans Spike			
FMOD CHARLIE FALLERS		9/5	Clay Ritts	2	O-237	0700-2100	Orleans Spike			
TFLD (t) RUIZ		8/29	Andres Ruiz	1	O-221	0700-2100	Orleans Spike			
HEQB WILLAMS		9/6	Brian Williams	2	O-279	0700-2100	Orleans Spike			
MONTEREY REMS		8/31	Robert Klimek		O-61	0700-2100	Orleans Spike			
EMPF CHRISTY		9/4	Julian Christy	1	O-90	0700-2100	Orleans Spike			
EMPF STODDARD		9/5	Matt Stoddard	1	O-93	0700-2100	Orleans Spike			
SOFR QUIGLEY			Tim Quigley	1		0700-2100	Orleans Spike			
6. Work Assignments:										
Construct control line and improve the connecting motorway from the J/Z break to the north to limit western fire progression and to mitigate fire impact to the Orleans communities.										
Utilize indirect firing strategies to secure control lines and to reduce fire intensity on impact.										
7. Special Instructions:										
Coordinate with READs to validate control line locations prior to implementation.										
Do not use community hydrants unless there is fire impact to values at risk. Utilize drafting as primary water source.										
CULS Nick Hillman, Jessica Conrad working across DIV J and DIV Z.										
Matt Lipson SOF1 is working across BR X.										
8. Communications										
Name	Ch	Function	Rx Freq	Rx Tone	Tx Freq	Tx Tone	Mode	Notes		
NIFC C44	2	COMMAND	170.7625	(T7) 167.9	165.6250	(T7) 167.9	A	Tone 7		
VFIRE 23	7	TACTICAL	154.2950	(T6) 156.7	154.2950	(T6) 156.7	A	Tone 6		
A/G 43	14	TACTICAL	167.6000		167.6000		A			
CALCORD	15	TACTICAL	156.0750	(T6) 156.7	156.0750	(T6) 156.7	A	MEDICAL A/G		
AIR GUARD	16		168.6250		168.6250	(T1) 110.9	A			
9. Prepared by: Name:										
Jeff Ferguson, Jay Shaffer, Alyssa Thornburg(t), Jennifer Dean(t)				RESL		Signature: _____				
ICS 204										
Date/Time: 8/24/2023 2200					Personnel Count: 21					

ASSIGNMENT LIST (ICS 204 WF)

CONTROLLED UNCLASSIFIED
INFORMATION//BASIC

1. Incident Name:	2. Operational Period:	3. Branch	Division
2023 SRF Lightning Complex	Date From: 08/25/23 Date To: 08/26/23 Time From: 0700 Time To: 0700	X	Y
4. Operations Personnel:		Page 1 of 1	Yankee

Operations Section Chief: Patrick Russell, Travis Thane(t)	Night Ops:
Branch Director: Rod Mendes, Mike Hildebrand (t)	Branch Safety:
Division/Group Supervisor: Robert McClellan, Jamie Willburn(t)	Air Attack:

5. Resources Assigned:	**RESOURCES IN BOLD ARE 12HR, UNBOLDED ARE 24HR**						
Resource Identifier	ALS	LWD	Leader	Personnel	Request #	Hours	Reporting Location
ENG3 DEBEQUE FPD 82		9/5	Jason Lee	4	E-107	0700-2100	Orleans Spike
ENG4 BLM E478		9/5	Nathanial Green	5	E-167	0700-2100	Orleans Spike
ENG5 STONE MTN FIRE E-102		9/5	Adam Gadeberg	3	E-102	0700-2100	Orleans Spike
ENG5 STONE MTN FIRE E-157		9/5	Jonathan Villareal	3	E-157	0700-2100	Orleans Spike
ENG5 BLACKSTONE 1028		9/5	Josh Richards	3	E-160	0700-2100	Orleans Spike
ENG6 WESTERN FIRE 323		9/5	Derrick Holdstock	3	E-20	0700-2100	Orleans Spike
ENG6 A1 FIRESTORM 6			Noah Lafferty	3	E-94	0700-2100	Orleans Spike
ENG6 FREMONT CO		9/4	Chaz Brown	3	E-111	0700-2100	Orleans Spike
ENG6 HI COUNTRY		9/5	Zach Mostad	3	E-96	0700-2100	Orleans Spike
ENG6 GRAND VALLEY		9/6	Tony Wade	2	E-108	0700-2100	Orleans Spike
ENG6 WEST METRO FIRE BRUSH 9		9/4	Jonathan Ashford	4	E-112	0700-2100	Orleans Spike
ENG6 114 FIRECAT		9/5	Matt Soiland	3	E-114	0700-2100	Orleans Spike
ENG6 ARCHER MTN		9/4	Colton Kenny	3	E-159	0700-2100	Orleans Spike
ENG6 FIRE WORKS LLC		9/5	Tom Mathews	3	E-165	0700-2100	Orleans Spike
ENG6 MONTROSE		9/5	Brent Stanley	3	E-117	0700-2100	Orleans Spike
EMTF SOTO		9/5	Enrique Soto	1	O-234	0700-2100	Orleans Spike
EMTF ORNELAS		8/31	Pablo Ornelas	1	O-235	0700-2100	Orleans Spike

6. Work Assignments:
 Construct control line from the Y/Z break to the east to limit southern fire progression.
 Scout along the Salmon River Road to develop a structure defense plan.

7. Special Instructions:
 Do not use community hydrants unless there is fire impact to values at risk. Utilize drafting as primary water source.
 READs Heather Rickard, Nick Hillman, and Jessica Conrad working across Branch X.
 Matt Lipson SOF1 is working across BR X.

8. Communications

Name	Ch	Function	Rx Freq	Rx Tone	Tx Freq	Tx Tone	Mode	Notes
NIFC C44	2	COMMAND	170.7625	(T7) 167.9	165.6250	(T7) 167.9	A	Tone 7
VTAC12	11	TACTICAL	154.4525	(T6) 156.7	154.4525	(T6) 156.7	A	Tone 6
A/G 43	14	TACTICAL	167.6000		167.6000		A	
CALCORD	15	TACTICAL	156.0750	(T6) 156.7	156.0750	(T6) 156.7	A	MEDICAL A/G
AIR GUARD	16		168.6250		168.6250	(T1) 110.9	A	

9. Prepared by: Name: Jeff Ferguson, Jay Shaffer, Alyssa Thornburg(t), Jennifer Dean(t) RESL
 Signature: _____

ICS 204 Date/Time: 8/24/2023 2200 Personnel Count: 50

ASSIGNMENT LIST (ICS 204 WF)

CONTROLLED UNCLASSIFIED
INFORMATION//BASIC

1. Incident Name: 2023 SRF Lightning Complex		2. Operational Period: Date From: 08/25/23 Date To: 08/26/23 Time From: 0700 Time To: 0700				3. Branch Division X Structure Grp		
4. Operations Personnel:						Page 1 of 3		
Operations Section Chief: Patrick Russell, Travis Thane(t)				Night Ops:				
Branch Director: Rod Mendes, Mike Hildebrand (t)				Branch Safety:				
Division/Group Supervisor: Brian Heath, Mike Evers(t)				Air Attack:				
5. Resources Assigned:		**RESOURCES IN BOLD ARE 12HR, UNBOLDED ARE 24HR**						
Resource Identifier	ALS	LWD	Leader	Personnel	Request #	Hours	Reporting Location	
HC2 SUNSET FORESTRY INC		9/5	Adam Mejia	20	C-40	0700-2100	Orleans Spike	
HC2 FRANCO FORESTRY		9/5	Octavio Quevedo	20	C-41	0700-2100	Orleans Spike	
ENG S/T 6604C			Crawford Gunn	25	E-2	0700-2100	Orleans Spike	
ENG S/T 4807A		9/5	Jayne Ramirez		E-86	0700-2100	Orleans Spike	
S/T 2075C		9/6	Chris Emmons	19	E-88	0700-2100	Orleans Spike	
TASK FORCE 1								
TFLD GUNDLE			Collin Gundle	1	O-182	0700-2100	Orleans Spike	
ENG3 J3 CONTRACTING 32		9/5		3	E-17	0700-2100	Orleans Spike	
ENG4 WINSTON		9/4	Robin Winston		E-144	0700-2100	Orleans Spike	
ENG5 PVT BUSCHER		9/3	Robert Rennich	3	E-91	0700-2100	Orleans Spike	
ENG6 OAK CREEK FIRE			Tim Hohnbaum	4	E-110	0700-2100	Orleans Spike	
ENG6 SUNDANCE E-118					E-118	0700-2100	Orleans Spike	
ENG6 GREEN MOUNTAIN		9/4		3	E-136	0700-2100	Orleans Spike	
TASK FORCE 2								
TFLD MARSALA					E-212	0700-2100	Orleans Spike	
ENG3 CORONA 180			Klinton Smuda		E-4	0700-2100	Orleans Spike	
ENG3 FULL SUPPRESSION			Eric Spinter		E-14	0700-2100	Orleans Spike	
ENG3 J3 CONTRACTING 41		9/6		3	E-97	0700-2100	Orleans Spike	
6. Work Assignments: Create defensible space and implement other defensible measures to reduce adverse fire impact to the values at risk in the Orleans communities.								
7. Special Instructions: Identify resources to respond to new starts within the complex footprint. Do not use community hydrants unless there is fire impact to values at risk. Utilize drafting as primary water source. Matt Lipson SOF1 is working across BR X. READs Heather Rickard, Nick Hillman, and Jessica Conrad working across Branch X.								
8. Communications								
Name	Ch	Function	Rx Freq	Rx Tone	Tx Freq	Tx Tone	Mode	Notes
NIFC C44	2	COMMAND	170.7625	(T7) 167.9	165.6250	(T7) 167.9	A	Tone 7
VFIRE 25	9	TACTICAL	154.2875	(T6) 156.7	154.2875	(T6) 156.7	A	Tone 6
A/G 43	14	TACTICAL	167.6000		167.6000		A	
CALCORD	15	TACTICAL	156.0750	(T6) 156.7	156.0750	(T6) 156.7	A	MEDICAL A/G
AIR GUARD	16		168.6250		168.6250	(T1) 110.9	A	
9. Prepared by: Name:		Jeff Ferguson, Jay Shaffer, Alyssa Thornburg(t), Jennifer Dean(t)			RESL		Signature: _____	
ICS 204	Date/Time: 8/24/2023 2200			Personnel Count: 101				

ASSIGNMENT LIST (ICS 204 WF)

CONTROLLED UNCLASSIFIED
INFORMATION//BASIC

1. Incident Name:		2. Operational Period:				3. Branch		Division	
2023 SRF Lightning Complex		Date From: 08/25/23	Date To: 08/26/23			X		Structure Grp	
		Time From: 0700	Time To: 0700						
4. Operations Personnel:						Page 2 of 3			
Operations Section Chief: Patrick Russell, Travis Thane(t)			Night Ops:						
Branch Director: Rod Mendes, Mike Hildebrand (t)			Branch Safety:						
Division/Group Supervisor: Brian Heath, Mike Evers(t)			Air Attack:						
5. Resources Assigned:		**RESOURCES IN BOLD ARE 12HR, UNBOLDED ARE 24HR**							
Resource Identifier	ALS	LWD	Leader	Personnel	Request #	Hours	Reporting Location		
TASK FORCE 2 CONT.									
ENG3 BLUE LAKE 8838			Joe Enein	4	E-128	0700-2100	Orleans Spike		
ENG6 PVT AAA FORESTRY		9/1	Chris Martin	4	E-37	0700-2100	Orleans Spike		
TASK FORCE 3									
TFLD KINLEY						0700-2100	Orleans Spike		
ENG3 STEAMBOAT SPRINGS			Leighton White	4	E-4	0700-2100	Orleans Spike		
ENG3 CASTLE MTN (4) E-12			Blaine Fifield	4	E-12	0700-2100	Orleans Spike		
ENG3 J3 CONTRACTING 39		9/5	AS Klotz	3	E-26	0700-2100	Orleans Spike		
ENG3 FIREANT 321		9/5	Zach Anthis	4	E-151	0700-2100	Orleans Spike		
ENG3 FIREANT 322		9/5	Mark Bennett		E-152	0700-2100	Orleans Spike		
ENG4 NV HTF 452 (5) E-21			Shawn Krajewski	5	E-21	0700-2100	Orleans Spike		
ENG4 EARTH INDUSTRIES		9/4	Allan Robertson	3	E-135	0700-2100	Orleans Spike		
ENG5 BUSCHER 616		9/5	Steve Kinley	3	E-163	0700-2100	Orleans Spike		
ENG6 SAND HOLLOW FD B21		8/31	Jonathon Thomas	3	E-137	0700-2100	Orleans Spike		
ENG6 BIRD DOG FIRE E-142		9/5		3	E-142	0700-2100	Orleans Spike		
TASK FORCE 4									
ENG6 NATIONAL FIRE 8		9/6	Juniper Odell	3	E-98	0700-2100	Orleans Spike		
ENG6 BRIGHTON FIRE		9/5	Brian Guyer	3	E-100	0700-2100	Orleans Spike		
ENG6 NATIONAL WILDLAND FIRE		9/6	Brian Ennis	3	E-103	0700-2100	Orleans Spike		
6. Work Assignments:									
Create defensible space and implement other defensible measures to reduce adverse fire impact to the values at risk in the Orleans communities.									
7. Special Instructions:									
Identify resources to respond to new starts within the complex footprint.									
Do not use community hydrants unless there is fire impact to values at risk. Utilize drafting as primary water source.									
READs Heather Rickard, Nick Hillman, and Jessica Conrad working across Branch X.									
Matt Lipson SOF1 is working across BR X.									
8. Communications									
Name	Ch	Function	Rx Freq	Rx Tone	Tx Freq	Tx Tone	Mode	Notes	
NIFC C44	2	COMMAND	170.7625	(T7) 167.9	165.6250	(T7) 167.9	A	Tone 7	
VFIRE 25	9	TACTICAL	154.2875	(T6) 156.7	154.2875	(T6) 156.7	A	Tone 6	
A/G 43	14	TACTICAL	167.6000		167.6000		A		
CALCORD	15	TACTICAL	156.0750	(T6) 156.7	156.0750	(T6) 156.7	A	MEDICAL A/G	
AIR GUARD	16		168.6250		168.6250	(T1) 110.9	A		
9. Prepared by: Name:		Jeff Ferguson, Jay Shaffer, Alyssa Thornburg(t), Jennifer Dean(t)			RESL		Signature: _____		
ICS 204		Date/Time: 8/24/2023 2200			Personnel Count: 49				

ASSIGNMENT LIST (ICS 204 WF)

CONTROLLED UNCLASSIFIED
INFORMATION//BASIC

1. Incident Name:		2. Operational Period:				3. Branch		Division		
2023 SRF Lightning Complex		Date From: 08/25/23	Date To: 08/26/23			X		Structure Grp		
		Time From: 0700	Time To: 0700							
4. Operations Personnel:						Page 3 of 4				
Operations Section Chief: Patrick Russell, Travis Thane(t)				Night Ops:						
Branch Director: Rod Mendes, Mike Hildebrand (t)				Branch Safety:						
Division/Group Supervisor: Brian Heath, Mike Evers(t)				Air Attack:						
5. Resources Assigned:		**RESOURCES IN BOLD ARE 12HR, UNBOLDED ARE 24HR**								
Resource Identifier	ALS	LWD	Leader	Personnel	Request #	Hours	Reporting Location			
TASK FORCE 5										
ENG4 LONE PEAK 492		9/3	Luis Ruis	6	E-90	0700-2100	Orleans Spike			
ENG6 FIRE TRAX		9/6	Jeff Herron	3	E-106	0700-2100	Orleans Spike			
ENG6 E 6541			Erik Acker	4	E-140	0700-2100	Orleans Spike			
ENG6 E631			Travis Adcock	4	E-173	0700-2100	Orleans Spike			
END OF TASK FORCE 5										
ENG3 OAK CREEK FIRE		9/6	Garrett Pohlman	4	E-109	0700-2100	Orleans Spike			
ENG3 J3 CONTRACTING E-131		9/5	Ben Perry	3	E-131	0700-2100	Orleans Spike			
ENG3 INF 323		9/4	Oliver Litchfield	5	E-148	0700-2100	Orleans Spike			
ENG3 J3 CONTRACTING E-166		9/6		4	E-166	0700-2100	Orleans Spike			
ENG6 PVT AAA FORESTRY		9/1	Chris Martin	4	E-37	0700-2100	Orleans Spike			
ENG6 OREGON WOODS		9/6	Lonny Hanson	3	E-95	0700-2100	Orleans Spike			
ENG6 OUTBACK 113		9/5	Rick Manchester	3	E-113	0700-2100	Orleans Spike			
ENG6 RING OF FIRE		9/6	Ryan Schlater	3	E-170	0700-2100	Orleans Spike			
ENG6 WILDLAND FIRE SERVICE		9/6	Mehg Chuor	3	E-172	0700-2100	Orleans Spike			
DOZ3 LAGUA				2	E-6	0700-2100	Orleans Spike			
MAST COTTONWOOD					E-10	0700-2100	Orleans Spike			
CHP DAVIS CORP			Jose Fabela	3	E-192	0700-2100	Orleans Spike			
6. Work Assignments:										
Create defensible space and implement other defensible measures to reduce adverse fire impact to the values at risk in the Orleans communities.										
7. Special Instructions:										
Identify resources to respond to new starts within the complex footprint.										
Do not use community hydrants unless there is fire impact to values at risk. Utilize drafting as primary water source.										
READs Heather Rickard, Nick Hillman, and Jessica Conrad working across Branch X.										
Matt Lipson SOF1 is working across BR X.										
8. Communications										
Name	Ch	Function	Rx Freq	Rx Tone	Tx Freq	Tx Tone	Mode	Notes		
NIFC C44	2	COMMAND	170.7625	(T7) 167.9	165.6250	(T7) 167.9	A	Tone 7		
VFIRE 25	9	TACTICAL	154.2875	(T6) 156.7	154.2875	(T6) 156.7	A	Tone 6		
A/G 43	14	TACTICAL	167.6000		167.6000		A			
CALCORD	15	TACTICAL	156.0750	(T6) 156.7	156.0750	(T6) 156.7	A	MEDICAL A/G		
AIR GUARD	16		168.6250		168.6250	(T1) 110.9	A			
9. Prepared by: Name:			Jeff Ferguson, Jay Shaffer, Alyssa Thornburg(t), Jennifer Dean(t)			RESL		Signature: _____		
ICS 204		Date/Time: 8/24/2023 2200			Personnel Count: 54					

ASSIGNMENT LIST (ICS 204 WF)

CONTROLLED UNCLASSIFIED
INFORMATION//BASIC

1. Incident Name:	2. Operational Period:	3. Branch	Division
2023 SRF Lightning Complex	Date From: 08/25/23 Date To: 08/26/23 Time From: 0700 Time To: 0700	X	Structure Grp

Page 4 of 4

4. Operations Personnel:			
Operations Section Chief: Patrick Russell, Travis Thane(t)	Night Ops:		
Branch Director: Rod Mendes, Mike Hildebrand (t)	Branch Safety:		
Division/Group Supervisor: Brian Heath, Mike Evers(t)	Air Attack:		

5. Resources Assigned:	**RESOURCES IN BOLD ARE 12HR, UNBOLDED ARE 24HR**						
Resource Identifier	ALS	LWD	Leader	Personnel	Request #	Hours	Reporting Location
CHP2 SISKIYOU TREES PLUS				3	E-193	0700-2100	Orleans Spike
WT2 PEEPLES VALLEY		8/30			E-1	0700-2100	Orleans Spike
WT2 KIT CONTRACTING			Tony Hill	1	E-5	0700-2100	Orleans Spike
WT2 DARRAH LOGGING E-15			Rodney Browne	1	E-15	0700-2100	Orleans Spike
WT2 DARRAH LOGGING E-18			Richard Kincaid	1	E-18	0700-2100	Orleans Spike
WT2 SHAN CREEK		8/30	Zion Gottschalk	1	E-20	0700-2100	Orleans Spike
WT2 PRO DUMP			Mike Seabourn	1	E-22	0700-2100	Orleans Spike
WT3 DAVE DUERR		9/4		1	E-120	0700-2100	Orleans Spike
WT3 ALANS WT		9/4		1	E-194	0700-2100	Orleans Spike
EMPF CHRISTY		9/4	Julian Christy	1	O-90	0700-2100	Orleans Spike
EMPF STODDARD		9/5	Matt Stoddard	1	O-93	0700-2100	Orleans Spike
PUMPZILLA		9/5	Abel Pini	2	S-74	0700-2100	Orleans Spike

6. Work Assignments:
 Create defensible space and implement other defensible measures to reduce adverse fire impact to the values at risk in the Orleans communities.

7. Special Instructions:
 Identify resources to respond to new starts within the complex footprint.
 Do not use community hydrants unless there is fire impact to values at risk. Utilize drafting as primary water source.
 READs Heather Rickard, Nick Hillman, and Jessica Conrad working across Branch X.
 Matt Lipson SOF1 is working across BR X.

8. Communications								
Name	Ch	Function	Rx Freq	Rx Tone	Tx Freq	Tx Tone	Mode	Notes
NIFC C44	2	COMMAND	170.7625	(T7) 167.9	165.6250	(T7) 167.9	A	Tone 7
VFIRE 25	9	TACTICAL	154.2875	(T6) 156.7	154.2875	(T6) 156.7	A	Tone 6
A/G 43	14	TACTICAL	167.6000		167.6000		A	
CALCORD	15	TACTICAL	156.0750	(T6) 156.7	156.0750	(T6) 156.7	A	MEDICAL A/G
AIR GUARD	16		168.6250		168.6250	(T1) 110.9	A	

9. Prepared by: Name: Jeff Ferguson, Jay Shaffer, Alyssa Thornburg(t), Jennifer Dean(t) RESL Signature: _____

ICS 204 Date/Time: 8/24/2023 2200 Personnel Count: 14

ASSIGNMENT LIST (ICS 204 WF)

CONTROLLED UNCLASSIFIED
INFORMATION//BASIC

1. Incident Name:		2. Operational Period:				3. Branch		Division		
2023 SRF Lightning Complex		Date From: 08/25/23	Date To: 08/26/23			XX		M		
		Time From: 0700	Time To: 0700							
4. Operations Personnel:						Page 1 of 3		Mike		
Operations Section Chief: Patrick Russell, Travis Thane(t)				Night Ops:						
Branch Director: Ian Morgan, Nathan Arellano				Branch Safety:						
Division/Group Supervisor: Brian Brennan, Mike Gawronski (t)				Air Attack:						
5. Resources Assigned:		**RESOURCES IN BOLD ARE 12HR, UNBOLDED ARE 24HR**								
Resource Identifier	ALS	LWD	Leader	Personnel	Request #	Hours	Reporting Location			
HC2 PVT PR REFORESTATION		9/3	Hector Gonzalez	20	C-17	0700-2100	Orleans Spike			
HC2 PVT WILLAMETTE VALLEY		9/3	Nemesio Vargas	20	C-19	0700-2100	Orleans Spike			
HC2 BLUE MOUNTAN		9/4	Andrew Duran	20	C-38	0700-2100	Orleans Spike			
HC2 GRIZZLY FIREFIGHTERS		9/6	Akeem Farr	20	C-43	0700-2100	Orleans Spike			
S/T XSL 1472C		9/6	Brian Lewis	17	E-201	0700-2100	Orleans Spike			
ENG3 SOUTH METRO FIRE 20		8/29	Jeremy Rath	4	E-92	0700-2100	Orleans Spike			
ENG4 E1302				4	E-6	0700-2100	Orleans Spike			
ENG4 PACIFIC HABITAT		9/3	Jake Williams	3	E-93	0700-2100	Orleans Spike			
ENG4 SUNDANCE FIRE E-19		9/3	Philip Long	3	E-19	0700-2100	Orleans Spike			
ENG4 SUNDANCE FIRE E-25		9/3	Matt Abbe	3	E-25	0700-2100	Orleans Spike			
ENG5 UTTING CONSTRUCTION		9/4	Tyler Nelson	3	E-18	0700-2100	Orleans Spike			
ENG5 GLOBAL WILDFIRE E-27		9/4	Logan Malone	3	E-27	0700-2100	Orleans Spike			
ENG5 GLOBAL WILDFIRE E-28		9/4	Brad Touissant	3	E-28	0700-2100	Orleans Spike			
ENG5 ELKO CO FIRE E-132		9/4	Teren Mitton	4	E-132	0700-2100	Orleans Spike			
ENG5 ELKO CO FIRE E-133		9/4	Carter Alvarado	4	E-133	0700-2100	Orleans Spike			
ENG5 PACIFIC OASIS		9/4	Wes Dodds	3	E-134	0700-2100	Orleans Spike			
ENG6 YUROK 9462		8/29	Talbert Alvarado	4	E-36	0700-2100	Orleans Spike			
ENG6 AAA THUNDERBOLT FIRE		9/5	James Grant	3	E-146	0700-2100	Orleans Spike			
6. Work Assignments:										
Secure the 12N12 road to limit eastern fire progression.										
Establish control lines and secure the Cedar Camp Road to limit southern fire progression.										
Scout for containment opportunities to limit northern fire progression.										
7. Special Instructions:										
Coordinate with READs to validate control line locations prior to implementation.										
Do not use community hydrants unless there is fire impact to values at risk. Utilize drafting as primary water source.										
Casy Hague (REAF), Kevin Colegrove (REAF), Eric Blake (READ), Heather Rickard (CULS), Amber Bishop (REAF), Jason Nez (ARCH), Sarah Brey (READ(t)), Tim Breen (READ) and Roy Sutcliff (READ(t)) are working across DIV M & DIV N.										
Tim Quigley SOFR is working across Branch XX										
8. Communications										
Name	Ch	Function	Rx Freq	Rx Tone	Tx Freq	Tx Tone	Mode	Notes		
NIFC C44	2	COMMAND	170.7625	(T7) 167.9	165.6250	(T7) 167.9	A	Tone 7		
VFIRE 24	8	TACTICAL	154.2725	(T6) 156.7	154.2725	(T6) 156.7	A	Tone 6		
A/G 43	14	TACTICAL	167.6000		167.6000		A			
CALCORD	15	TACTICAL	156.0750	(T6) 156.7	156.0750	(T6) 156.7	A	MEDICAL A/G		
AIR GUARD	16		168.6250		168.6250	(T1) 110.9	A			
9. Prepared by: Name:		Jeff Ferguson, Jay Shaffer, Alyssa Thornburg(t), Jennifer Dean(t)			RESL		Signature: _____			
ICS 204		Date/Time: 8/24/2023		2200		Personnel Count: 141				

ASSIGNMENT LIST (ICS 204 WF)

CONTROLLED UNCLASSIFIED
INFORMATION//BASIC

1. Incident Name:		2. Operational Period:				3. Branch		Division		
2023 SRF Lightning Complex		Date From: 08/25/23	Date To: 08/26/23			XX		M		
		Time From: 0700	Time To: 0700							
4. Operations Personnel:						Page 2 of 3		Mike		
Operations Section Chief: Patrick Russell, Travis Thane(t)				Night Ops:						
Branch Director: Ian Morgan, Nathan Arellano				Branch Safety:						
Division/Group Supervisor: Brian Brennan, Mike Gawronski (t)				Air Attack:						
5. Resources Assigned:		**RESOURCES IN BOLD ARE 12HR, UNBOLDED ARE 24HR**								
Resource Identifier	ALS	LWD	Leader	Personnel	Request #	Hours	Reporting Location			
ENG6 THUNDER MOUNTAIN		9/5		3	E-116	0700-2100	Orleans Spike			
ENG6 J3 CONTRACTING E-156		9/4	Curtis Pumphrey	3	E-156	0700-2100	Orleans Spike			
DOZ2 LET-ER-BUCK		9/1	Mike Baker	2	E-1	0700-2100	Orleans Spike			
DOZ3 KIT		8/31	Braydon Tomlinson	2	E-35	0700-2100	Orleans Spike			
MAST NORTH STATE EQUIP		9/3					Orleans Spike			
MAST PREMIER CLEARING		9/4	Mike Bridwell	2	E-182	0700-2100	Orleans Spike			
MAST LASSEN MASTICATOR		9/5	TJ Chrisman	2	E-230	0700-2100	Orleans Spike			
WT2 DARRAH LOGGING E-16			Dave Kaundart	1	E-16	0700-2100	Orleans Spike			
WT2 DARRAH LOGGING E-17		8/31	Tom Waterman	1	E-17	0700-2100	Orleans Spike			
WT2 PVT E-18			Daniel Cook		E-18	0700-2100	Orleans Spike			
WTT2 AVRA VALLEY		9/4	David Collins	2	E-121	0700-2100	Orleans Spike			
WT2 NORTHWEST FIRE		9/5	James Cravener	2	E-125	0700-2100	Orleans Spike			
TFLD KIRKMAN		8/28	Brian Kirkman	1		0700-2100	Orleans Spike			
TFLD FISHER		8/28	Isiah Fisher	1		0700-2100	Orleans Spike			
HEQB LOZANO		8/28	Steven Lozano	1		0700-2100	Orleans Spike			
FELB O'CONNOR		8/28	Morgan O'Connor	1		0700-2100	Orleans Spike			
STEQ FENWICK		9/4	Maria Fenwick	1	O-34	0700-2100	Orleans Spike			
AMBU 1223						0700-2100	Orleans Spike			
6. Work Assignments:										
Secure the 12N12 road to limit eastern fire progression.										
Establish control lines and secure the Cedar Camp Road to limit southern fire progression.										
Scout for containment opportunities to limit northern fire progression.										
7. Special Instructions:										
Coordinate with READs to validate control line locations prior to implementation.										
Do not use community hydrants unless there is fire impact to values at risk. Utilize drafting as primary water source.										
Casy Hague (REAF), Kevin Colegrove (REAF), Eric Blake (READ), Heather Rickard (CULS), Amber Bishop (REAF), Jason Nez (ARCH), Sarah Brey (READ(t)), Tim Breen (READ) and Roy Sutcliff (READ(t)) are working across Div M & Div N.										
Tim Quigley SOFR is working across Branch XX										
8. Communications										
Name	Ch	Function	Rx Freq	Rx Tone	Tx Freq	Tx Tone	Mode	Notes		
NIFC C44	2	COMMAND	170.7625	(T7) 167.9	165.6250	(T7) 167.9	A	Tone 7		
VFIRE 24	8	TACTICAL	154.2725	(T6) 156.7	154.2725	(T6) 156.7	A	Tone 6		
A/G 43	14	TACTICAL	167.6000		167.6000		A			
CALCORD	15	TACTICAL	156.0750	(T6) 156.7	156.0750	(T6) 156.7	A	MEDICAL A/G		
AIR GUARD	16		168.6250		168.6250	(T1) 110.9	A			
9. Prepared by: Name:		Jeff Ferguson, Jay Shaffer, Alyssa Thornburg(t), Jennifer Dean(t)			RESL		Signature: _____			
ICS 204		Date/Time: 8/24/2023		2200		Personnel Count: 25				

ASSIGNMENT LIST (ICS 204 WF)

CONTROLLED UNCLASSIFIED
INFORMATION/BASIC

1. Incident Name:		2. Operational Period:				3. Branch		Division		
2023 SRF Lightning Complex		Date From: 08/25/23	Date To: 08/26/23			XX		N		
		Time From: 0700	Time To: 0700							
4. Operations Personnel:						Page 1 of 2		November		
Operations Section Chief: Patrick Russell, Travis Thane(t)				Night Ops:						
Branch Director: Ian Morgan, Nathan Arellano				Branch Safety:						
Division/Group Supervisor: Brendon Banwell, Geoffrey Phelan (t)				Air Attack:						
5. Resources Assigned:		**RESOURCES IN BOLD ARE 12HR, UNBOLDED ARE 24HR**								
Resource Identifier	ALS	LWD	Leader	Personnel	Request #	Hours	Reporting Location			
HC2IA FRANCO			Jose Mora	20	C-36	0700-2100	Orleans Spike			
HC2 CABRERA CONTRACTING				20	C-39	0700-2100	Orleans Spike			
HC2 MOUNTAINEER CONTRACT		9/4	Jesus Ramos	20	C-44	0700-2100	Orleans Spike			
WFM ORLEANS		9/4	Ben Peterson	16	O-225	0700-2100	Orleans Spike			
TF 7102		9/5	Desmond Pellum	13	E-199	0700-2100	Orleans Spike			
ENG3 CA MDF 335		9/5	Tristean Wood	5	E-147	0700-2100	Orleans Spike			
ENG3 INF 323		9/4	Oliver Litchfield	5	E-148	0700-2100	Orleans Spike			
ENG3 PLATTE CANYON 33		8/28	Devon Macdonald	4	E-141	0700-2100	Orleans Spike			
ENG3 WEST METRO 9		8/28	Travis Griffin	4	E-139	0700-2100	Orleans Spike			
ENG YUOK E-9434		8/29	Fermin Sanchez	5		0700-2100	Orleans Spike			
ENG6 BIRD DOG FIRE		9/5	Jon Keyton	3	E-143	0700-2100	Orleans Spike			
ENG6 FLASHOVER LLC		9/4	Travis Grunenfelder	3	E-24	0700-2100	Orleans Spike			
ENG6 GRIZ ONE FIREFIGHTING		9/4	Shana Bekke	3	E-145	0700-2100	Orleans Spike			
ENG6 ROARING FORK		8/29	Maureen McPhee	3	E-138	0700-2100	Orleans Spike			
DOZ2 JIM SHERER TRUCKING		9/2		4	E-8	0700-2100	Orleans Spike			
DOZ2 STONY CREEK		9/6	Ken Cook	2	E-130	0700-2100	Orleans Spike			
DOZ2 LA RUE DOZER		9/5	Dan LaRue	2	E-129	0700-2100	Orleans Spike			
WT2 SQF 221		9/4		2	E-127	0700-2100	Orleans Spike			
6. Work Assignments:										
Construct control line along the 13N01 road to limit western fire progression.										
Scout for opportunities to construct control lines to limit the fire progression.										
7. Special Instructions:										
Do not use community hydrants unless there is fire impact to values at risk. Utilize drafting as primary water source.										
Casy Hague (REAF), Kevin Colegrove (REAF), Eric Blake (READ), Heather Rickard (CULS), Amber Bishop (REAF), Jason Nez (ARCH), Sarah Brey (READ(t), Tim Breen (READ) and Roy Sutcliff (READ(t) are working across Div M & Div N.										
Tim Quigley SOFR is working across Branch XX										
8. Communications										
Name	Ch	Function	Rx Freq	Rx Tone	Tx Freq	Tx Tone	Mode	Notes		
NIFC C44	2	COMMAND	170.7625	(T7) 167.9	165.6250	(T7) 167.9	A	Tone 7		
VTAC12	11	TACTICAL	154.4525	(T6) 156.7	154.4525	(T6) 156.7	A	Tone 6		
A/G 43	14	TACTICAL	167.6000		167.6000		A			
CALCORD	15	TACTICAL	156.0750	(T6) 156.7	156.0750	(T6) 156.7	A	MEDICAL A/G		
AIR GUARD	16		168.6250		168.6250	(T1) 110.9	A			
9. Prepared by: Name:		Jeff Ferguson, Jay Shaffer, Alyssa Thornburg(t), Jennifer Dean(t)				RESL		Signature: _____		
ICS 204		Date/Time: 8/24/2023 2200						Personnel Count: 134		

ASSIGNMENT LIST (ICS 204 WF)

CONTROLLED UNCLASSIFIED
INFORMATION/BASIC

1. Incident Name: 2023 SRF Lightning Complex		2. Operational Period: Date From: 08/25/23 Date To: 08/26/23 Time From: 0700 Time To: 0700				3. Branch XL		Division AA	
4. Operations Personnel:						Page 1 of 1		Alpha-Alpha	
Operations Section Chief: Patrick Russell, Travis Thane(t)				Night Ops:					
Branch Director: Jake Akerberg, Mike Conaty				Branch Safety: Doug McKelvey					
Division/Group Supervisor: Hayden Pitt(t)				Air Attack:					
5. Resources Assigned:		**RESOURCES IN BOLD ARE 12HR, UNBOLDED ARE 24HR**							
Resource Identifier	ALS	LWD	Leader	Personnel	Request #	Hours	Reporting Location		
WFM OLYMPIC		8/31	Jasper Peach	12	O-2	0700-2100	Orick Rodeo Grnds		
WFM KILEWEIA			Web	7		0700-2100	Orick Rodeo Grnds		
S/T SHU 9242G			Bobich	32	C-2	0700-0700	Orick Rodeo Grnds		
S/T AEU 9275G			Siliro		C-3	0700-0700	Orick Rodeo Grnds		
S/T MEU 9111C			Scott Davis	16	E-10	0700-0700	Orick Rodeo Grnds		
S/T SCU 9160C			Collins			0700-0700	Orick Rodeo Grnds		
WTS2 RIO 7157			Joseph Sancho	2		0700-0700	Orick Rodeo Grnds		
WTS2 ARF 8258				2		0700-0700	Orick Rodeo Grnds		
WTS2 PVT DARRAH 323			Carl Walker	1	E-1	0700-2100	Orick Rodeo Grnds		
WT1 5J WATER SERV			Bryan Jackson		E-15	0700-2100	Orick Rodeo Grnds		
CHIP PVT G AND C			Alex Knott	3	e-12	0700-2100	Orick Rodeo Grnds		
READ KINSMAN			Samantha Kinsman	1		0700-2100	Orick Rodeo Grnds		
EMPF FUGATE			Adam Fugate	1	O-188	0700-0700	Orick Rodeo Grnds		
EMPF SELLERS			Patrick Sellers	1	O-85	0700-0700	Orick Rodeo Grnds		
6. Work Assignments:									
Secure Holter Ridge Road from the AA/ZZ break north to limit eastern fire progression.									
Prep indirect line from DP 30 SW following designated ridge system to the fire's edge to limit northern fire progression.									
Construct contingency line west down the Geneva Road and onto the Geneva ridge system to limit northern fire progression.									
Utilize indirect firing strategies to secure control lines to reduce fire intensity on impact.									
7. Special Instructions:									
Keep the fire footprint as small as possible to reduce impacts to private lands and Old Growth Forest within the park.									
Coordinate with cooperating agencies to ensure control lines established meet incident needs.									
READ Emma McClure will be working across Branch XL.									
8. Communications									
Name	Ch	Function	Rx Freq	Rx Tone	Tx Freq	Tx Tone	Mode	Notes	
NIFC C45	3	COMMAND	173.0875	(T7) 167.9	162.8125	(T7) 167.9	A	Tone 7	
NIFC C54	4	COMMAND	173.9250	(T7) 167.9	170.5625	(T7) 167.9	A	Tone 7	
VTAC11	10	TACTICAL	151.1375	(T6) 156.7	151.1375	(T6) 156.7	A	Tone 6	
A/G 43	14	TACTICAL	167.6000		167.6000		A		
CALCORD	15	TACTICAL	156.0750	(T6) 156.7	156.0750	(T6) 156.7	A	MEDICAL A/G	
AIR GUARD	16		168.6250		168.6250	(T1) 110.9	A		
9. Prepared by: Name:									
Jeff Ferguson, Jay Shaffer, Alyssa Thornburg(t), Jennifer Dean(t)					RESL				
Signature: _____									
ICS 204		Date/Time: 8/24/2023 2200				Personnel Count: 78			

ASSIGNMENT LIST (ICS 204 WF)

CONTROLLED UNCLASSIFIED
INFORMATION//BASIC

1. Incident Name:	2. Operational Period:	3. Branch	Division
2023 SRF Lightning Complex	Date From: 08/25/23 Date To: 08/26/23 Time From: 0700 Time To: 0700	XL	ZZ

Page 1 of 1 Zulu-Zulu

4. Operations Personnel:	
Operations Section Chief: Patrick Russell, Travis Thane(t)	Night Ops:
Branch Director: Jake Akerberg, Mike Conaty	Branch Safety: Doug McKelvey
Division/Group Supervisor: Marshall Turbeville	Air Attack:

5. Resources Assigned:		**RESOURCES IN BOLD ARE 12HR, UNBOLDED ARE 24HR**					
Resource Identifier	ALS	LWD	Leader	Personnel	Request #	Hours	Reporting Location
YOSEMITE WFM		8/31	John O-Ocoy	9	O-1	0700-2100	Orick Rodeo Grnds
S/T MEU 9113G			Pat Crow	33	C-5	0700-0700	Orick Rodeo Grnds
S/T SCU 9161C			Jeff Nichols	20	E-12	0700-0700	Orick Rodeo Grnds
S/T LNU 9141C			Joshua Hartwed	17		0700-0700	Orick Rodeo Grnds
WTS1 PVT HAWLING A			Dan Ramirez	1	E-3	0700-2100	Orick Rodeo Grnds
FORESTER 1290			Joseph Fazio	1	O-30	0700-2100	Orick Rodeo Grnds
FORESTER 1299			Noah Coonan	1	O-31	0700-2100	Orick Rodeo Grnds
READ GOFF			Gabe Goff	1		0700-2100	Orick Rodeo Grnds
READ ANNA			Anna Hellwege-Bales	1		0700-2100	Orick Rodeo Grnds
EMPF HORVATH			Josh Horvath	1	O-88	0700-0700	Orick Rodeo Grnds
EMPF (t) BARKER			Adam Barker	1	O-87	0700-0700	Orick Rodeo Grnds

6. Work Assignments:

Secure and mop up from Holter Ridge Road down the 131 to the fire's edge to limit southern fire progression.
 Construct indirect line from the 141-road northwest to Lost Man Creek to limit southern fire progression.
 Utilize indirect firing strategies to secure control lines to reduce fire intensity on impact.

7. Special Instructions:

Keep the fire footprint as small as possible to reduce impacts to private lands and Old Growth Forest within the park.
 Coordinate with cooperating agencies to ensure control lines established meet incident needs.
 READ Emma McClure will be working across Branch XL.
 Hydrant use is off limits unless imminent structure threat.

8. Communications

Name	Ch	Function	Rx Freq	Rx Tone	Tx Freq	Tx Tone	Mode	Notes
NIFC C45	3	COMMAND	173.0875	(T7) 167.9	162.8125	(T7) 167.9	A	Tone 7
NIFC C54	4	COMMAND	173.9250	(T7) 167.9	170.5625	(T7) 167.9	A	Tone 7
VFIRE 24	8	TACTICAL	154.2725	(T6) 156.7	154.2725	(T6) 156.7	A	Tone 6
A/G 43	14	TACTICAL	167.6000		167.6000		A	
CALCORD	15	TACTICAL	156.0750	(T6) 156.7	156.0750	(T6) 156.7	A	MEDICAL A/G
AIR GUARD	16		168.6250		168.6250	(T1) 110.9	A	

9. Prepared by: Name: Jeff Ferguson, Jay Shaffer, Alyssa Thornburg(t), Jennifer Dean(t) RESL

Signature: _____

ICS 204 Date/Time: 8/24/2023 2200 Personnel Count: 86

Controlled Unclassified Information/Basic

AIR OPERATIONS SUMMARY 220	Prepared By: Terry Harris AOB	Prepared: 08/24/23	Prepared Time: 1700 hrs.
1. 55 INCIDENT NAME: SRF LIGHTNING COMPLEX KNEELAND HELIBASE	2. OPERATIONAL PERIOD 08/25/23	START TIME: 0900	END TIME: 2000
		SUNRISE: 0635	SUNSET: 2001

<p>3. REMARKS (Safety Notes, Hazards, Air Operations Special Equipment, etc.).</p> <p><u>HIGH VELOCITY, SHIFTING, ERRATIC WINDS WILL AFFECT AIRCRAFT PERFORMANCE AND AVAILABILITY OVER THE FIRE.</u></p> <p><u>STAY VIGILANT FOR CIVILIAN UAS AND UNAUTHORIZED AIRCRAFT</u></p> <p><u>NO FLY ZONES: CAMP CREEK/ORLEANS 8/26/23-8/30/23 & SOMES BAR AREA - 9/10/23/9/19/23</u></p>	<p>4. READY ALERT AIRCRAFT:</p> <p>REFERENCE MEDICAL PLAN</p> <p>5. TFR: 3/1052 TFR Frequency 126.2750 Polygon up to 8000' MSL</p>
--	--

6. PERSONNEL	NAME	PHONE #	7. FREQUENCIES	AM	FM	8. FIXED-WING Avail/ Type/ Make-Model/ N#/ Base
AOBD	Terry Harris	936-366-4239	TFR	126.2750		N OSM AC 690 AA-15 BASED @ RDD
ASGS	Kelvin McElfish	909-907-2677	A/G Command		167.8125	
			A/G Tactical		172.5500	
ATGS	Pat Basch	559-281-0533	Primary Air Tactics		171.0875	
HMGB 506	Ian Svendsen	406-925-2095	Secondary Air Tactics		171.8625	
HMGB 520	Shane Hagen	559-974-4500	Rotor Wing	126.425		
			Deck		168.500	
			Air Guard		168.6250	110.9 TX

9. HELICOPTERS

FAA N#	TY	MAKE/ MODEL	BASE	START	AVAIL	REMARKS	FAA N#	TY	MAKE/ MODEL	BASE	START	AVAIL	REMARKS
22Z(506)	2	BELL 212	019	0830	0900	Bucket/Recon	3HT(520)	2	BELL 205++	019	0830	0900	Rappel

INCIDENT RADIO COMMUNICATIONS PLAN (ICS 205) Incident Name: **2023 SRF LIGHTNING COMPLEX** Date/Time Prepared: **8/24/2023 1200** Operational Period Date/Time: **8/25/23 to 8/26/23 0700 TO 0700**

CONTROLLED CLASSIFIED INFORMATION/BASIC

Utilization of any frequency other than those listed on this form are prohibited, subject to fines by the FCC and demobilization from the incident.

Zn Ch	Function	Channel Name/Trunked Radio System Talkgroup	Assignment	RX Freq N or W	RX Tone/NAC	TX Freq N or W	Tx Tone/NAC	Dev	Pwr	Mode A, D or M	Remarks
1	COMMAND	NIFC C41	BR V	170.1375	167.9	165.1500	167.9	N	H	A	Tone 7
2	COMMAND	NIFC C44	BR X/XX	170.7625	167.9	165.6250	167.9	N	H	A	Tone 7
3	COMMAND	NIFC C45	BR XL	173.0875	167.9	162.8125	167.9	N	H	A	Tone 7
4	COMMAND	NIFC C54	BR XL	173.9250	167.9	170.5625	167.9	N	H	A	Tone 7
5											
6	TACTICAL	VFIRE 22	DIV A / DD / GG	154.2650	156.7	154.2650	156.7	N	H	A	Tone 6
7	TACTICAL	VFIRE 23	DIV J	154.2950	156.7	154.2950	156.7	N	H	A	Tone 6
8	TACTICAL	VFIRE 24	DIV M / ZZ	154.2725	156.7	154.2725	156.7	N	H	A	Tone 6
9	TACTICAL	VFIRE 25	DIV D / R / STR GRP	154.2875	156.7	154.2875	156.7	N	H	A	Tone 6
10	TACTICAL	VTAC11	DIV H / U / Z / AA	151.1375	156.7	151.1375	156.7	N	H	A	Tone 6
11	TACTICAL	VTAC12	DIV N / T / Y	154.4525	156.7	154.4525	156.7	N	H	A	Tone 6
12	TACTICAL	VTAC13	CONTINGENCY	158.7375	156.7	158.7375	156.7	N	H	A	Tone 6
13	TACTICAL	VTAC14	TBD	159.4725	156.7	159.4725	156.7	N	H	A	Tone 6
14	TACTICAL	A/G 43	LOCAL IA A/G	167.6000	NONE	167.6000	NONE	N	H	A	
15	TACTICAL	CALCORD	MEDICAL	156.0750	156.7	156.0750	156.7	N	H	A	Medical A/G
16	EMERGENCY	AIRGUARD	EMERGENCY	168.6250	N	168.6250	110.9	N	H	A	

Prepared By (Communications Unit Leader) *Kody Kerwin* Incident Location: HOOPA, CA Forest / Unit / Jurisdiction: Six Rivers NF

Kody Kerwin, COML (925) 953-3044 Latitude: " N Longitude: W
Lightening Communications :(510) 507-5460 State: CA County: HUMBOLDT

MEDICAL PLAN (206)	1. INCIDENT NAME: SRF LIGHTNING COMPLEX	2. DATE PREPARED: August 24, 2023	3. TIME PREPARED: 1900	4. OPERATIONAL PERIOD 08/25/23 - 08/26/23 0700-0700
---------------------------	---	---	----------------------------------	---

5. INCIDENT MEDICAL AID			
MEDICAL AID STATIONS	LOCATION	ALS	
		YES	NO
Frontline Medical	ICP 11120 CA-96, Hoopa, CA 95546	X	
Frontline Medical	12 Eyesee Road, Orleans, CA 95556	X	

6. TRANSPORTATION				
A. Ground Ambulance				
NAME	LOCATION	PHONE	ALS	
			Yes	No
Mountain Medics Ambulance	AMBO 2	Branch X Resource	(530) 859-3157	X
Mountain Medics Ambulance	AMBO 4	Branch V Resource	(530) 859-8416	X
American Ambulance	AMBO1241	Branch XL Resource	(559) 331-3936	X
American Ambulance	AMBO1233	Branch XX Resource	(559) 972-5162	X
B. Air Ambulance				
NAME	CONTACT	Type of Aircraft & Capability	ALS	
			Yes	No
Cal Fire 902	COMMAND	Helicopter Type 2 -ALS, Day Hoist Only (ETA 10 min.)	X	
Reach 5	COMMAND	Helicopter Type 3 -ALS 24 hour. (ETA 30 min.)	X	
CHP H14/H15	COMMAND	Helicopter Type 3 – ALS, Day Hoist Only (ETA 30 min.)	X	
Sac Metro Copter-1	COMMAND	Helicopter – ALS 24 hour, NVG, Hoist, Medevac (ETA 30 min.)	X	

7. HOSPITALS										
NAME	ADDRESS	TRVL TIME		PHONE	TRAUMA		HELIPAD		BURN CENTER	
		AIR	GRND		Yes	No	YES	NO	YES	NO
Mad River Community Hospital	3800 Janes Rd. Arcata, CA 95521 40° 53.72" N, 124° 05.45 W	20 Min	60 Min	(707) 822-3621	LVL 4		X			X
St. Joseph Hospital	2700 Dolbeer St. Eureka, CA 95501 40° 22.10 N, 121° 41.40 W	20 Min	1.5 Hrs.	(707) 445-8121	LVL 3		X			X
Mercy Medical Center Redding	2175 Rosaline Ave. Redding, CA 96001 40° 34.33 N, 122° 23.80 W	30 Min	2 Hrs.	(530) 225-7201	LVL 2		X			X
UC Davis Medical Center	2315 Stockton Blvd. Sacramento, CA 95817 38° 33.32 N, 121° 27.35 W	2 Hrs	4.5 Hrs.	916-734-2011	LVL 1		X		X	

8. MEDICAL EMERGENCY PROCEDURES

LINE "MEDICAL-EMERGENCY" PLAN:

- Crew Supervisor to contact Division Supervisor/Operations with:
 - Patient Complaint, Condition and Location via Tactical or Command frequency.
 - Priority 1/Red & 2/Yellow patients trigger Incident within Incident (IWI).
- Division Supervisor/Operation contacts Communications/Dispatch:
 - Division Supervisor or POC* will run "Medical –Emergency" on the Command frequency.
 - Division Supervisor or POC* to use "Medical Incident Report" worksheet on back of this page or back of IRPG.
 - Communication contacts Medical Unit Leader on the Command frequency or cell phone (916) 591-9031 (Medical Emergencies Only).

POC* (Point of Contact) and/or Operations

LINE "NON-EMERGENCY INCIDENT" PLAN:

- Crew Supervisor to contact Division Supervisor with:
 - Patient Complaint, Condition and Location via Tactical or Command frequency.
 - Priority 3/Green, (Minor) Patients **do not** trigger Incident within Incident (IWI).
- Division Supervisor to contact Communications/dispatch:
 - Division Supervisor or POC* will run "Non-Emergency Incident" on the Command frequency.
 - Division Supervisor or POC* will use "Medical Incident Report" worksheet on the back of this page or back of IRPG.
 - Communications contacts Medical Unit Leader on the Command frequency or cell phone (916) 591-9031 (For medical related incidents only).

IN-CAMP – 24 HOUR MEDICAL

- Contact 911 and Medical Unit (916) 591-9031 with:
 - Patient Complaint, Condition and Location

9. PREPARED BY
Scott Mohlenbrok (MEDL)

10. REVIEWED BY
Safety Officer

Medical Incident Report

FOR A **NON-EMERGENCY INCIDENT**: WORK THROUGH CHAIN OF COMMAND TO REPORT AND TRANSPORT INJURED PERSONNEL AS NECESSARY.

FOR A **MEDICAL EMERGENCY**: IDENTIFY ON SCENE INCIDENT COMMANDER BY NAME AND POSITION AND ANNOUNCE "MEDICAL EMERGENCY" TO INITIATE RESPONSE FROM COMMUNICATIONS

Use the following items to communicate situation to communications/dispatch.

1. CONTACT COMMUNICATIONS / DISPATCH (Verify correct frequency prior to starting report)

Ex: "Communications, Div. Alpha. Stand-by for Emergency Traffic."

2. INCIDENT STATUS: Provide incident summary (including number of patients) and command structure.

Ex: "Communications, I have a Red priority patient, unconscious, struck by a falling tree.

Requesting air ambulance to Forest Road 1 at (Lat./Long.)

"This will be the Trout Meadow Medical Incident, IC is TFLD Jones. EMT Smith is providing medical care."

Severity of Emergency AND Transport Priority (priority 1, 2, 3)	<input type="checkbox"/> RED / PRIORITY 1 Life or limb threatening injury or illness. Evacuation need is IMMEDIATE <i>Ex: Unconscious, difficulty breathing, bleeding severely, 2° – 3° burns more than 4 palm sizes, heat stroke, disoriented.</i> <input type="checkbox"/> YELLOW / PRIORITY 2 Serious Injury or illness. Evacuation may be DELAYED if necessary. <i>Ex: Significant trauma, unable to walk, 2° – 3° burns not more than 1-3 palm sizes.</i> <input type="checkbox"/> GREEN / PRIORITY 3 Minor Injury or illness. Non-Emergency transport <i>Ex: Sprains, strains, minor heat-related illness.</i>	
Nature of Injury or Illness & Mechanism of Injury		<i>Brief Summary of Injury or Illness (Ex: Unconscious, Struck by Falling Tree)</i>
Transport Request		<i>Air Ambulance / Short Haul/Hoist Ground Ambulance / Other</i>
Patient Location		<i>Descriptive Location & Lat. / Long. (WGS84)</i>
Incident Name		<i>Geographic Name + "Medical" (Ex: Trout Meadow Medical)</i>
On-Scene Incident Commander		<i>Name of on-scene IC of Incident within an Incident (Ex: TFLD Jones)</i>
Crew Patient Care		<i>Name of Care Provider (Ex: EMT Smith)</i>

3. INITIAL PATIENT ASSESSMENT: Complete this section for each patient as applicable (start with the most severe patient)

Agency Affiliation: (NO PATIENT NAMES) Federal Contractor Local Government

Patient Assessment: Age: Weight: Chief Complaint:

(If pertinent to Injury) Skin Signs: (color/moisture/temp) Level of Consciousness: BP: HR: Respirations:

Treatment:

4. TRANSPORT PLAN:

Evacuation Location (*drop point, intersection, helispot, Lat. / Long, hazards*) Patient's ETA to Location:

5. ADDITIONAL RESOURCES / EQUIPMENT NEEDS:

Paramedic / EMT - Crews - Immobilization Devices - AED - Oxygen - Trauma Bag - IV/Fluid(s) - Splints - Rope rescue - Wheeled litter - HAZMAT - Extrication

6. COMMUNICATIONS: Identify State Air/Ground EMS Frequencies and Hospital Contacts as applicable

Function	Channel Name/Number	Receive (RX)	Tone/NAC *	Transmit (TX)	Tone/NAC *
COMMAND					
AIR-TO-GRND					
TACTICAL					

7. CONTINGENCY: Considerations: If primary options fail, what actions can be implemented in conjunction with primary evacuation method? *Be thinking ahead.*

8. ADDITIONAL INFORMATION: *Updates/Changes, etc.*

REMEMBER: Confirm ETA's of resources ordered. Act according to your level of training
Be Alert - Keep Calm - Think Clearly - Act Decisively

*** Follow up with MEDL upon return to ICP ***



TEAM 2 FINANCE MESSAGE



2023 LIGHTNING COMPLEX: QKB4

- NOW accepting either electronic or hard copy documentation, SEE QR CODE page in the IAP for Finance email link. (Agreements, Resource Order, Equipment Inspections, CTRs and Shift Tickets)
- PDF format is preferred for submitted documents.
- If you have not checked in with Finance, please come in and visit us.
- Early assigned resources check in to see if your paperwork is in order.
- FINANCE LOCATION- HOOPA FIRE DEPT- Finance trailer hours 0600-2130 Daily



LOST INCIDENT: QJ5R

FEDERAL FINANCE MESSAGE

- NOW accepting either electronic or hard copy documentation, SEE QR CODE page in the IAP for Finance email link. (Agreements, Resource Order, Equipment Inspections, CTRs and Shift Tickets)
- PDF format is preferred for submitted documents.
- If you have not checked in with Finance, please submit documents electronically via QR code.
- Early assigned resources check in to see if your paperwork is in order.
- FINANCE Representative will be at morning briefing in Orick, come see us for questions!



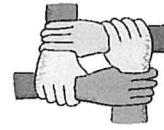
CAL FIRE FINANCE MESSAGE

CAHUU 008310 HUU LOST INCIDENT SUPPORT

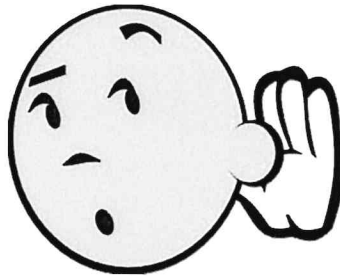
- CAL FIRE Finance Section is located at Redwood Acres Fair Grounds
- **No Off-Site Feeding.** All feeding is provided by the Food Unit at the Incident Base.
- Please come by the Time Unit and start and update your FC-33
- Vendors, please drop off your agreements to the Time Unit
- Shift Tickets need to be completed by line supervisor and turned in at the end of each shift.
- All injuries and potential claims need to be reported to the COMP/CLAIMS Unit @ Matt Boone 530-789-1985
- All property damage must be reported and documented.



Human Resource Message



Listen More



A wise man once told me that we have 2 ears and 1 mouth for a reason – to listen twice as much as we speak; and if you notice, our ears always stay open, while our mouths have a hinge so it can be closed.

Also, note that “listen” and “silent” are spelled with the same letters. Is that just a coincidence, or is it that you need to be silent in order to be able to really listen? Check that out and think about it!

Let’s try really listening to each other more and see if we can resolve our issues and/or concerns that we may have much faster.

Take Home Message:

Good listening allows us to demonstrate that we are paying attention to the thoughts, feelings and behaviors of the other person (seeing the world through their eyes). This is crucial to maintaining productive relationships, and sometimes the only way to establish communication

The Human Resources Specialist is here on assignment to help you and your teams manage the operational stress keeping your crews safe, positive, and productive increasing your situational awareness.

Human Resources Specialist – Tony Torres
505.249.2341 (call/text) or email @ Anthony.Torres@usda.gov



Cal OES

AREP

Eric Petterson

(916) 634-8498



Protect our Forest from Port-Orford-cedar Root Disease

What is it?

Port-Orford-cedar root disease is a pathogen called *Phytophthora lateralis*, a water mold related to brown algae. It spreads by producing spores that infect the roots of Port-Orford-cedar trees. In the early stages the tree foliage yellows before becoming brown. Large trees die within two to four years after infection; seedlings die within a few weeks. *In areas impacted by this disease up to*



How does it spread?

This pathogen is spread by spores that are carried in wet soils and in water from infected areas to unaffected stands of Port-Orford-cedar (POC). Spores can be carried on the vehicle tires and under-carriage, boots, pump hoses and other equipment.

Where is it found?

Currently, infected stands occur in areas of Southern Oregon and Northern California including the Smith River District and the Orleans district in the Bluff Creek drainage. BUT, not all stands are infected!

Prevention:

1. Wash vehicles and equipment in weed wash that includes a bleach solution, before entering areas with un-infected POC areas.
2. Where possible, avoid driving through areas with wet soils where diseased POC trees are present. Wash vehicles and equipment in weed wash after leaving infected areas.
3. Avoid drafting in areas within or below streams with infected POC.
4. Clean off boots and tools after working in infected stands of POC.

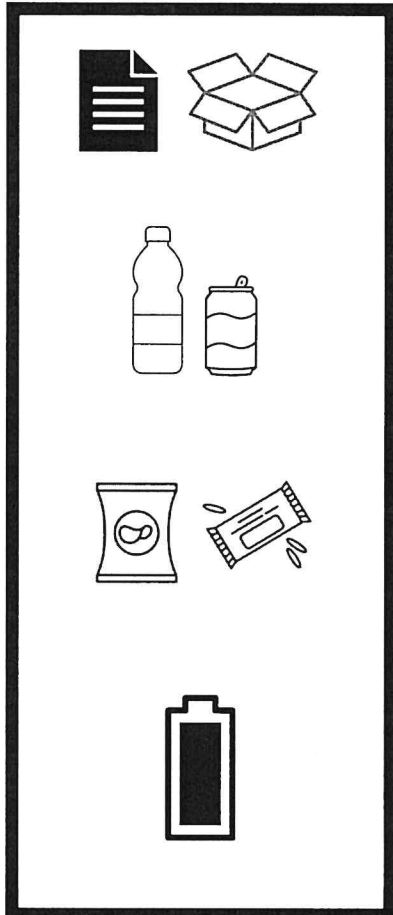
Please talk to a resource advisor if you need additional information.

Thank you!



RECYCLING IS HERE!

On the SRF Lightning Complex



PAPER AND CARDBOARD

PLASTIC BOTTLES, GLASS
BOTTLES AND ALUMINUM
CANS

NON-PERISHABLE FOOD
DONATIONS (Chips,
Snacks, etc.)

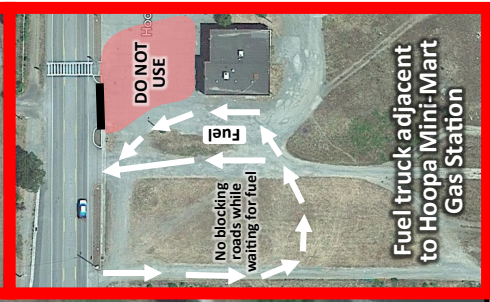
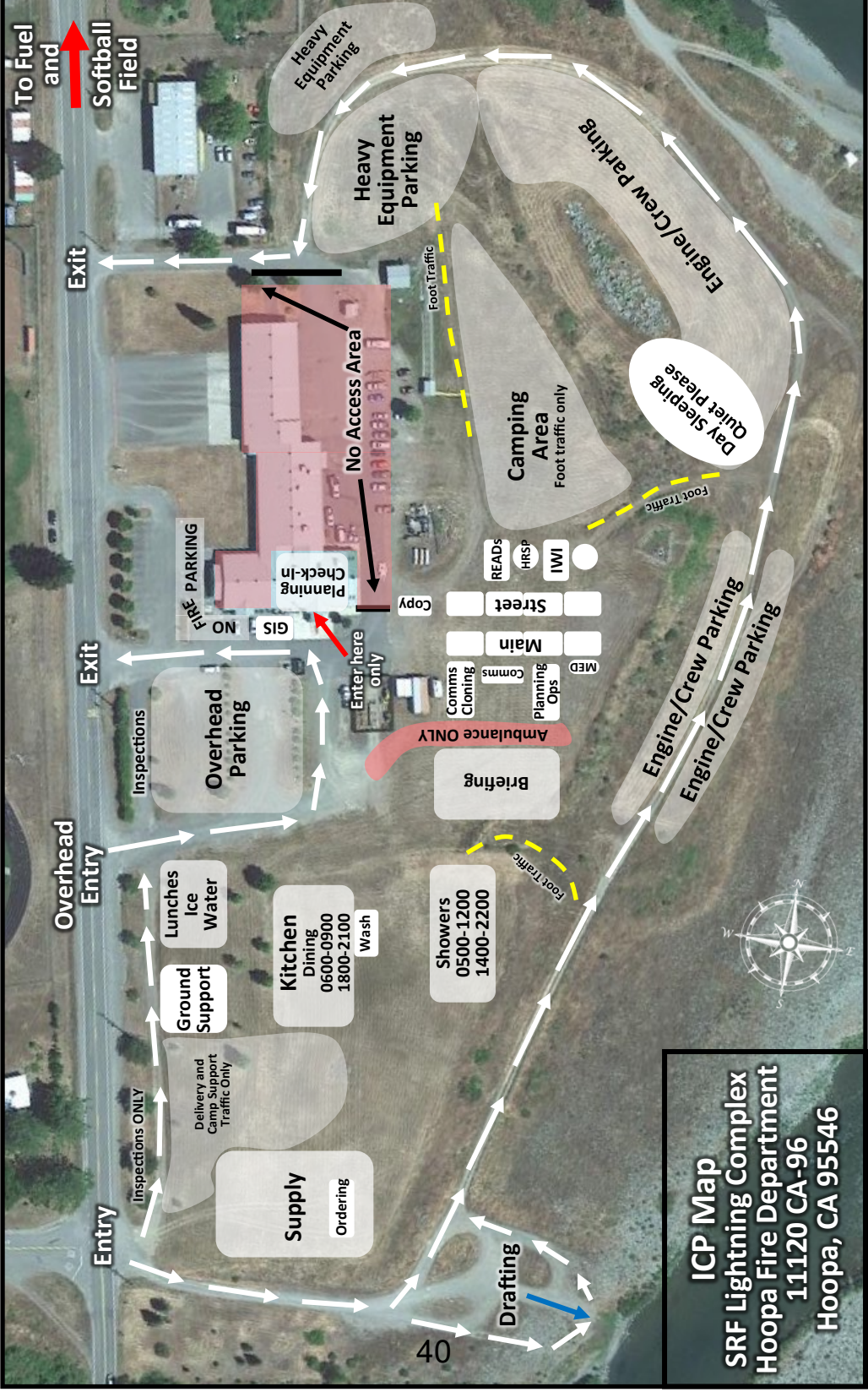
BATTERIES

Thanks for Recycling Right:

- Sort your trash
- Put recycling in a Blue Bag
- Empty liquids and remove caps from bottles
- Only non-perishable foods

*Blue Recycling Bags available at
Recycling Center and Refer.*





ICP Map
SRF Lightning Complex
Hoopa Fire Department
11120 CA-96
Hoopa, CA 95546

