

# 2023 SRF LIGHTNING COMPLEX INCIDENT ACTION PLAN

SCAN FOR INCIDENT INFORMATION



SCAN FOR INCIDENT INFORMATION

SUNDAY

SRF LIGHTNING COMPLEX

## CA-SRF-00986

P5QKB4 (0510)

REDWOOD LIGHTNING COMPLEX

QJ5R (1522)



**OPERATIONAL PERIOD**

**08/27/2023 – 08/28/23**

**0700 HRS - 0700 HRS**

SUNDAY



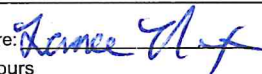


<b>INCIDENT OBJECTIVES (ICS 202)</b>	1. INCIDENT NAME: SRF Lightning Complex	2. DATE: 8/26/2023	3. TIME: 1900 hrs.
4. OPERATIONAL PERIOD (DATE/TIME): 08/27/2023 thru 08/28/2023 0700 to 0700			
5. OBJECTIVES:			
<p><u>Strategic Framework</u></p> <p>Confine, contain, or control all fires utilizing a full suppression strategy. Values at risk include human safety, private timberlands, communities, cultural, critical infrastructure, and associated improvements. Apply tactics that offer the highest probability of success.</p> <p><u>Leaders Intent</u></p> <p>Provide the highest level of customer service to all involved with or impacted. Ensure transparent, timely and accurate communication at all levels of the incident and strengthen relationships with cooperators. All incident assigned personnel should be prepared to take appropriate actions regarding:</p> <ul style="list-style-type: none"> <li>• Personal safety and the safety of others, including driving slowly and defensively.</li> <li>• Manage fatigue by taking breaks and maintaining work/rest cycles.</li> <li>• Minimize risk and limit exposure to infectious disease by implementing Center of Disease Control, California Department of Public Health, and agency guidelines.</li> <li>• Professional behavior, and timely/effective communication.</li> </ul> <p><u>Management Objectives</u></p> <ul style="list-style-type: none"> <li>• Prior to engagement, stop and discuss strategies and tactics to ensure sound risk management principles are in place to provide for firefighter and public safety.</li> <li>• Implement fire suppression activities in accordance with Incident Resource Advisors.</li> <li>• Minimize impacts to cultural, resources, infrastructure, and private property inholdings.</li> </ul> <p><u>Control Objectives</u></p> <p>Keep Fires within the Six Rivers National Forest:</p> <ul style="list-style-type: none"> <li>• Within remote National Forest areas to protect heritage, cultural, natural resources.</li> <li>• East of Hoopa, Orleans and Hwy 96 to protect the communities along the Klamath River corridor.</li> </ul> <p>Keep Fires within the Redwood National Park:</p> <ul style="list-style-type: none"> <li>• As small as possible and within park lands to protect old growth redwoods, private timber land and cultural values.</li> </ul>			
Site Safety Plan Required: <input type="checkbox"/> Yes <input checked="" type="checkbox"/> No    Approved Site Safety Plan Located at:			
9. Attachments (☑ if attached):			
☑ Organization List (ICS 203)	☑ Safety Message	<input type="checkbox"/> Incident Phone List	<input type="checkbox"/> Logistics Message
☑ Weather Forecast	<input type="checkbox"/> Risk Analysis (ICS 215A)	☑ Finance Message	☑ READ Message
☑ Fire Behavior Forecast	☑ Medical Plan (ICS 206)	☑ Info / Pio Message	☑ Dmob - Plan / Pending
☑ Incident Assignments (ICS 204)	☑ Medical Report - 8 Line	☑ Human Resource	☑ Maps - Travel / Camp
☑ Air Ops (ICS 220)	☑ Communication Plan (ICS 205)	☑ Training Message	☑ Unit Log (ICS 214)
10. PREPARED BY (PLANNING SECTION CHIEF) <i>Dance Nye</i>	11. APPROVED BY (INCIDENT COMMANDER) <i>[Signature]</i>		





## ORGANIZATION ASSIGNMENT LIST (ICS 203)

<b>1. Incident Name:</b> 2023 SRF Lightning Complex		<b>2. Operational Period: Date From:</b> 8/27/2023 <b>Date To:</b> 8/28/2023	
		Time From: 0700    Time To: 0700	
<b>3. Incident Commander(s) and Command Staff:</b>		<b>7. Operation Section:</b>	
IC/UC's	Nickie Johnny	Operations	Patrick Russell, Travis Thane(t)
Deputy	Curtis Coots, John Goss(t)	Planning Ops	Matt Conklin, Kristian Litz(t)
Safety Officer	John Nickey, Linda Ferguson, Doug McKelvey, Matt Lipson Anna Maria Echeverria		
Information Officer	Deanna Younger, Daron Wyatt, Jim Mackensen	Staging Area	
Liaison Officer	Robbin Ekman, Dennis Rein, Ray Torres(t)	Branch	V
<b>4. Agency/Organization Representatives:</b>		Division/Group	A/D/H
Agency/Organization	Name	Division/Group	Shawn Woodbury, Adam Stevens(t)
NPS-AA	Steve Mietz	Branch	X <b>Rod Mendes, Mike Hildebrand (t)</b>
NPS-AREP	Mike Minton	Division/Group	J    Anna Wright, Ry Phipps(t)
Forest Service AA	Ted McArthur	Division/Group	Y    Robert McClellan, Jamie Willburn(t)
Forest Service AREP	Nolan Colegrove, Jen Dyer(t)	Division/Group	Z    Jason McCarty, Greg Herrera(t)
Hoopa Tribe	Greg Moon	Division/Group	Structure Grp    Brian Heath, Mike Evers(t)
Karuk Tribe	Vicki Preston	Division/Group	R/T/U    Eric Darragh, Laurence Williams(t)
Yurok Tribe	Tim Hayden	Division/Group	
CalFire AREP	Sean Norman	Division/Group	
BIA AA	Nathan Gogna	Division/Group	
BIA AREP	Shane Santos	Division/Group	
PG&E	Donovan Lee	Division/Group	
PG&E	Daren Dalrymple	Branch	XX <b>Ian Morgan, Nathan Arellano (t)</b>
CCC AREP	Benjamin Herbert	Division/Group	L    Orlando Genao, Curtis Wayka(t)
		Division/Group	M    Brian Brennan, Mike Gawronski (t)
		Division/Group	N    Brendon Banwell, Geoffrey Phelan (t)
		Division/Group	
<b>5. Planning Section:</b>		Branch	XL <b>Jake Akerberg, Lief Mathiesen, Jason Dyer</b>
Chief	Lance Noxon, Aaron Grove,	Division/Group	AA    Joe Walton
Deputy	Justin Saiz(t)	Division/Group	ZZ    Mason Gorham
Resource Unit	Jeff Ferguson, Jay Shaffer, Alyssa Thornburg(t)	Division/Group	CC/DD/GG    Russ Mitchell, Bryan Boatman(t)
Situation Unit	Jeff Chung(t), Joe O'Conor (t) (Orleans)	Division/Group	Contingency    Andrew Davenport(t)
Documentation Unit		Division/Group	
Demobilization Unit	Irma Conteras, Jennifer Dean(t)	Branch	
GISS	Carvel Bass	Division/Group	NIGHT    Unstaffed
FBAN	Dennis Burns	Division/Group	
IMET	Rececca Muessle	Division/Group	
Training Tech Spec	Dominic Panno	<b>Air Operations Branch</b> <b>Director:</b>	
SCKN	Stephen Gillette, Aimee Lorincz Matthew Earl, Scott Cichoracki	AOBD    Terry Harris	
Lead Read	Erin Rentz (ICP) Emma McClure (Lost)	Air Attack Group Supervisor	
<b>6. Logistics Section</b>		Air Support Group Supervisor    Kelvin McElfish	
Chief	Tom Crakes, Jeremiah Green (Orleans) PM Clarity(t)		
Supply Unit	Mani Bouslaugh	<b>8. Finance/Administration Section:</b>	
Facilities Unit	Stephen McNaughten, Rod Torres	Chief	Larry Lee, Tracy Falls(t), Rob Taylor(t)
Ground Support Unit	Dave Trussel, Frankie Brit	Time Unit	Terrell Hope
Food Unit Leader	James Junette		
Communications Unit	David Paschke, Kody Kerwin	Procurement Unit	Maggie Prochazka
Medical Unit	Scott Mohlenbrok, Josh Rubinstein, Christopher Schilling	Comp/Claims Unit	Cassandra Avila
ITSS	Gerald Fong, Terri Miller, Rick Shellooe	Cost Unit	Matt Gagnon(t)
<b>Prepared By: Name:</b>	Lance Noxon, Aaron Grove,	<b>Position/Title:</b>	PSC    Signature: 
<b>ICS 203</b>		<b>Date/Time:</b>	8/26/2023 2300 hours    NIMS IAP





## 2023 SRF Lost Fire Spot Weather Forecast



**FORECAST NO:** 7  
**FORECAST FOR:** Sun, Aug 27th Day/Night Shift  
**FORECAST ISSUED:** Aug 26, 2023, 1900 PDT

**NAME OF FIRE:** 2023 SRF Lightning Complex  
**SIGNED:** /s/ Rebecca Muesle - IMET  
**OBSERVATION PHONE NUMBER:** (971)394-0798

**Discussion:** Minimal change as the pattern is stagnant. Marine stratus through most of the day with overcast skies. An inversion forming around 2000 ft will keep humidity below the inversion higher than above 2000 ft. Below the inversion fog is likely which will limit visibility at times. No precipitation expected. Diurnal and terrain driven winds.

For Branches XX, X, & V fire weather, please see previous page

### FORECAST FOR TODAY:

#### Valleys & Slopes (below 1000 ft)

#### Ridgetops and Above 1000 ft

<b>Max Temperature:</b> 60-70°	<b>Max Temperature:</b> 73-85°
<b>Min RH:</b> 76-85%	<b>Min RH:</b> 34-50%
<b>20 FT Winds:</b> Variable becoming upslope 3-8 mph	<b>20 FT Winds:</b> East 6-8 mph with isolated gusts to 13 mph, then NW 8-10 mph with gusts to 17 mph

### OUTLOOK FOR TONIGHT:

#### Valleys & Slopes (below 1000 ft)

#### Ridgetops and Above 1000 ft

<b>Min Temperature:</b> 50-58°	<b>Min Temperature:</b> 49-98°
<b>Max RH:</b> 90-99%	<b>Max RH:</b> 80-90%
<b>20 FT Winds:</b> NW becoming drainage 2-5 mph	<b>20 FT Winds:</b> W 7-10 mph becoming NE 6-9 mph with gusts up to 14 mph early Monday morning

**OUTLOOK FOR MONDAY:** Transitional day as a broad low pressure system slowly advances inland. While it will not fully move inland, the onshore flow will become stronger causing enhanced marine stratus and cooler temperatures. The inversion will continue to be a main feature of the environment. The diurnal winds will become weaker in favor of a more dominant northwesterly direction. Wind speeds will remain around 5-9 mph with gusts along the higher terrain up to 19 mph in the afternoon. Temperatures will see little change with highs ranging from 60-70 degrees, lows from 51-60 degrees. Daytime humidity from 59-70% (lower along the ridges above the inversion), and recoveries 90-near 100%

# FIRE BEHAVIOR FORECAST

<b>FORECAST NUMBER:</b> 9	<b>TYPE OF FIRE:</b> Wildfire
<b>FIRE NAME:</b> SRF Lightning Complex	<b>OPERATIONAL PERIOD:</b> August 27, 2023 24hr
<b>DATE ISSUED:</b> 8/26/23	<b>TIME ISSUED:</b> 1800
<b>UNIT:</b> CA-SRF	<b>SIGNED:</b> _____ <b>Typed/printed:</b> Dennis Burns/s/

## INPUTS

**WEATHER SUMMARY:** \*\*\*Warm and Dry\*\*\*  
Temps: Inland Day 86-91 Night 54-61 Redwood Day 73-83 Night 50-60  
RH: Inland Day 29-40% Night 75-95% Redwood Day 38-58% Night 80-99%  
Winds: Day Inland WNW 4-7mph gusts to 20mph. Redwood W 8-10 gusts to 17mph.  
Night Inland NE 5-7mph Redwood NE 6-9mph gusts to 14mph.

**FUELS SUMMARY:** Dense mixed conifer, old-growth timber, heavy dead/down, mixed ground fuels.

## OUTPUTS

### FIRE BEHAVIOR

#### GENERAL:

Little change in the forecast activity will depend on what time the smoke and marine inversions mix out. Expect active fire behavior once the inversion mixes out, this includes single and group tree torching with short crown runs on aligned slopes. Primary fire spread will be active backing surface fire. Roll out will also contribute to fire spread. Rapid upslope runs are possible when fire reaches drainage bottoms and reverses slope. Spotting from torching trees will be in the range of 400 feet. With the large amount of snags, surface fire will be resistant to control. With the steep multiple intersecting drainages, active fire has a high probability of generating fire whirls.

Probability of ignition 70%

If any resources are dispatched to assist with IA expect moderate to rapid rates of spread with mainly surface fire and some torching in the denser tree stands.

#### SPECIFIC:

**Branch V:** No forward fire progression is expected fire behavior will be smoldering and creeping.

**Branch X:** Expect active backing and flanking fire spread. Keep a heads up for fire spread or rollout that could lead to slope reversals. Fire established on an aligned slope will have rapid rates of spread and the potential for short crown runs. With the heavy dead down component, fires will be resistant to control. Very little moisture made it through areas with dense canopy cover as a result there are potentially opportunities to initiate firing operations.

**Branch XX:** Expect active surface fire with single and group tree torching. With the fires located on exposed ridges, keep a heads up for spot fires from the torching trees.

**Redwood Fires:** Lost Fire: Expect mainly backing fire with smoldering and creeping. Minimal forward fire progression is expected. Bridge: Flanking and creeping above the marine layer on aligned slopes isolated single tree torching and short range spotting. Fires in this fuel type are very resistant to control.

**Night Shift:** With the RH recovery minimal forward fire progression is expected on any of the fires.

**AIR OPERATIONS:** Expect the smoke to limit air operations until the inversion mixes out, potentially as late as 1430.

## SAFETY

- Make sure Lookouts are posted in places where they can see potential spotting.
- Fire weakened timber poses a threat to personnel working in timber areas.





# SAFETY MESSAGE

*Fire fighter safety comes first on every fire, every time*



INCIDENT: SRF Lightning Complex

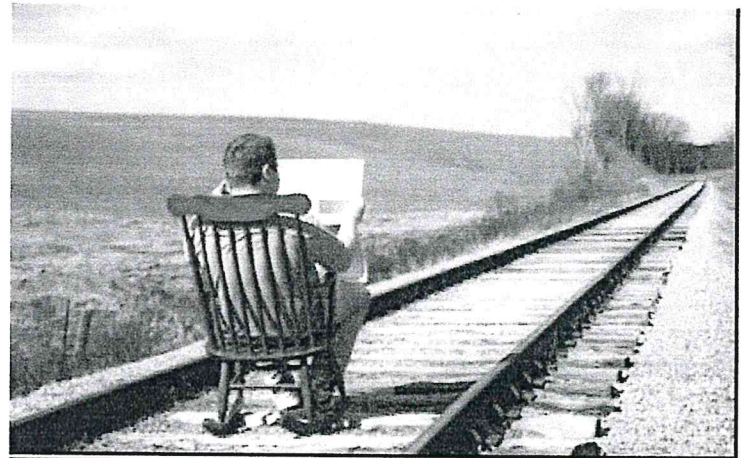
Date: 8/27/23 thru 8/28/23

Operational Period: 0700-0700

## COMPLACENCY

Now is a critical time to be on guard for complacency to set in. Fire and line activity have settled into a routine and it is easy to get into a comfortable routine. It is important to remain alert to changing weather conditions and aware of your work environment. Think about what you are doing and what the consequences of your actions are because they may affect somebody else!

*Are you as engaged today as you were on the first day you were here?*



## COMPLACENCY

Hard to get past the newspaper

**If not, get your stuff together!!**

Complacency occurs when you've been doing something one way for so long without incident that you assume there can never be an incident.

In a constantly changing environment, extra vigilance is needed, but workers still become complacent. Inspections fail to happen and workers walk or move equipment without looking where they're going, to the point where, from a safety standpoint, they seem to be sleepwalking through the job.

### **How to Fight Complacency**

**Stay vigilant and ensure that those that work around you remain vigilant as well.**

**Team Safety Officers: Linda Ferguson, Annamaria Echeverria, John Nickey, Doug McKelvey, Matt Lipson**



# ASSIGNMENT LIST (ICS 204 WF)

CONTROLLED UNCLASSIFIED  
INFORMATION//BASIC

<b>1. Incident Name:</b> <b>2023 SRF Lightning Complex</b>	<b>2. Operational Period:</b> Date From: 08/27/23    Date To: 08/28/23 Time From: 0700    Time To: 0700	<b>3. Branch</b> <b>Division</b> <b>V</b> <b>A/D/H</b>
<b>4. Operations Personnel:</b>		Page 1 of 1

Operations Section Chief: <b>Patrick Russell, Travis Thane(t)</b>	Night Ops:
Branch Director:	Branch Safety:
Division/Group Supervisor: <b>Shawn Woodbury, Adam Stevens(t)</b>	Air Attack:

<b>5. Resources Assigned:</b>		<b>**RESOURCES IN BOLD ARE 12HR, UNBOLDED ARE 24HR**</b>					
Resource Identifier	ALS	LWD	Leader	Personnel	Request #	Hours	Reporting Location
<b>HC2 FRANCO AFS FORESTRY</b>		<b>9/2</b>	<b>Guadalupe</b>	20	<b>C-9</b>	<b>0700-2100</b>	<b>ICP</b>
<b>ENG3 PVT OUTBACK</b>		<b>9/1</b>	<b>Grover Allread</b>	3	<b>E-8</b>	<b>0700-2100</b>	<b>ICP</b>
<b>ENG3 SRF 342</b>		<b>8/29</b>	<b>Sam Collenson</b>	5	<b>E-38</b>	<b>0700-2100</b>	<b>ICP</b>
<b>ENG4 ROCK CREEK</b>		<b>8/29</b>	<b>Stacey Thomas</b>	3	<b>E-2</b>	<b>0700-2100</b>	<b>ICP</b>
<b>WT2 V&amp;P SERVICES</b>		<b>8/29</b>	<b>Victor Knight</b>	1	<b>E-13</b>	<b>0700-2100</b>	<b>ICP</b>

**6. Work Assignments:**  
Patrol and mitigate any concerns to ensure that escape is improbable.

**7. Special Instructions:**  
Coordinate with READs to validate to identify any suppression repair needs.  
Do not use community hydrants unless there is fire impact to values at risk. Utilize drafting as primary water source.

**8. Communications**

Name	Ch	Function	Rx Freq	Rx Tone	Tx Freq	Tx Tone	Mode	Notes
NIFC C41	1	COMMAND	170.1375	(T7) 167.9	165.1500	(T7) 167.9	A	Tone 7
VFIRE 22	6	TACTICAL	154.2650	(T6) 156.7	154.2650	(T6) 156.7	A	Tone 6
A/G CMD	12	TACTICAL	167.8125		167.8125		A	
A/G TAC	13	TACTICAL	172.5500		172.5500		A	
CALCORD	15	TACTICAL	156.0750	(T6) 156.7	156.0750	(T6) 156.7	A	MEDICAL A/G
AIR GUARD	16		168.6250		168.6250	(T1) 110.9	A	

**9. Prepared by: Name:** Jeff Ferguson, Jay Shaffer, Alyssa Thornburg(t)    RESL    Signature: \_\_\_\_\_

**ICS 204**    Date/Time: 8/26/2023 2200    Personnel Count: 32

# ASSIGNMENT LIST (ICS 204 WF)

CONTROLLED UNCLASSIFIED  
INFORMATION/BASIC

<b>1. Incident Name:</b>			<b>2. Operational Period:</b>				<b>3. Branch</b>		<b>Division</b>	
<b>2023 SRF Lightning Complex</b>			Date From: 08/27/23		Date To: 08/28/23		<b>X</b>		<b>J</b>	
			Time From: 0700		Time To: 0700					
<b>4. Operations Personnel:</b>							<b>Page 1 of 2</b>		<b>Juliet</b>	
Operations Section Chief: <b>Patrick Russell, Travis Thane(t)</b>					Night Ops:					
Branch Director: <b>Rod Mendes, Mike Hildebrand (t)</b>					Branch Safety: <b>Matt Lipson</b>					
Division/Group Supervisor: <b>Anna Wright, Ry Phipps(t)</b>					Air Attack:					
<b>5. Resources Assigned:</b>			<b>**RESOURCES IN BOLD ARE 12HR, UNBOLDED ARE 24HR**</b>							
Resource Identifier	ALS	LWD	Leader	Personnel	Request #	Hours	Reporting Location			
<b>HC1 FULTON IHC</b>		<b>8/26</b>	<b>Josh Acosta</b>	23	<b>C-2</b>	<b>0700-2100</b>	<b>Orleans Spike</b>			
<b>HC21A BUZZARD CREEK</b>		<b>8/30</b>	<b>Daniel Renner</b>	20	<b>C-2</b>	<b>0700-2100</b>	<b>Orleans Spike</b>			
<b>HC2 FRANCO C-6</b>		<b>9/2</b>	<b>Leo Rasch</b>	20	<b>C-6</b>	<b>0700-2100</b>	<b>Orleans Spike</b>			
<b>HC2 MOUNTAINEER CONTRACTING</b>		<b>9/4</b>	<b>Javier Ramos</b>	20	<b>C-7</b>	<b>0700-2100</b>	<b>Orleans Spike</b>			
<b>HC2 PVT AYE GARCIA C-11</b>		<b>9/1</b>	<b>Noel Solis</b>	20	<b>C-11</b>	<b>0700-2100</b>	<b>Orleans Spike</b>			
<b>HC2IA PVT KLAMATH FALLS C-12</b>		<b>9/1</b>	<b>Leo Orozco</b>	20	<b>C-12</b>	<b>0700-2100</b>	<b>Orleans Spike</b>			
<b>HC2 JD FORESTRY C-18</b>		<b>9/3</b>	<b>Hector Gonzalez</b>	20	<b>C-18</b>	<b>0700-2100</b>	<b>Orleans Spike</b>			
<b>S/T HC2IA CA SBC 1546G</b>		<b>9/1</b>	<b>Tyler Gilliom</b>	35	<b>C-45</b>	<b>0700-2100</b>	<b>Orleans Spike</b>			
<b>ENG3 OAK CREEK FIRE</b>		<b>9/6</b>	<b>Garrett Pohlman</b>	4	<b>E-109</b>	<b>0700-2100</b>	<b>Orleans Spike</b>			
<b>ENG3 ID-BOF 441</b>		<b>8/30</b>	<b>Trenton Stone</b>	5	<b>E-3</b>	<b>0700-2100</b>	<b>Orleans Spike</b>			
<b>ENG4 ID-BOF 413</b>		<b>8/30</b>	<b>Paul Mitchell</b>	6	<b>E-2</b>	<b>0700-2100</b>	<b>Orleans Spike</b>			
<b>ENG6 CO-ARF 654</b>		<b>9/5</b>	<b>Robert Lemay</b>	6	<b>E-99</b>	<b>0700-2100</b>	<b>Orleans Spike</b>			
<b>ENG6 CRANES WILDFIRE</b>		<b>9/5</b>	<b>Don Crane</b>	3	<b>E-149</b>	<b>0700-2100</b>	<b>Orleans Spike</b>			
<b>ENG6 FIREANT 326</b>		<b>9/5</b>	<b>Chris Anthis</b>	3	<b>E-150</b>	<b>0700-2100</b>	<b>Orleans Spike</b>			
<b>ENG6 EAGLE FIRE</b>		<b>9/1</b>	<b>John Bradshaw</b>	3	<b>E-153</b>	<b>0700-2100</b>	<b>Orleans Spike</b>			
<b>ENG6 Uintah Fire Brush 41</b>		<b>8/31</b>	<b>Patrick Berry</b>	3	<b>E-154</b>	<b>0700-2100</b>	<b>Orleans Spike</b>			
<b>ENG6 MT ROSE 33</b>		<b>9/5</b>	<b>Cameron Moore</b>		<b>E-155</b>	<b>0700-2100</b>	<b>Orleans Spike</b>			
<b>ENG6 AMERICAN FIRE COMPANY</b>		<b>9/5</b>	<b>Kate Webber</b>	3	<b>E-158</b>	<b>0700-2100</b>	<b>Orleans Spike</b>			
<b>6. Work Assignments:</b>										
Prepare to utilize indirect firing strategies to secure control lines from the J/Z break through DP14 and along the control line to the north to DP11 to reduce fire intensity on impact.										
Construct control line from DP11 to DP17 to limit western fire progression and to mitigate fire impact to the Orleans communities.										
<b>7. Special Instructions:</b>										
Coordinate with READs to validate control line locations prior to implementation.										
Do not use community hydrants unless there is fire impact to values at risk. Utilize drafting as primary water source.										
CULS Nick Hillman, Jessica Conrad, Jason Nez (Arch) and Sarah Brey(t) working across DIV J and DIV Z.										
<b>8. Communications</b>										
Name	Ch	Function	Rx Freq	Rx Tone	Tx Freq	Tx Tone	Mode	Notes		
NIFC C44	2	COMMAND	170.7625	(T7) 167.9	165.6250	(T7) 167.9	A	Tone 7		
VFIRE 23	7	TACTICAL	154.2950	(T6) 156.7	154.2950	(T6) 156.7	A	Tone 6		
A/G CMD	12	TACTICAL	167.8125		167.8125		A			
A/G TAC	13	TACTICAL	172.5500		172.5500		A			
CALCORD	15	TACTICAL	156.0750	(T6) 156.7	156.0750	(T6) 156.7	A	MEDICAL A/G		
AIR GUARD	16		168.6250		168.6250	(T1) 110.9	A			
<b>9. Prepared by: Name:</b>			Jeff Ferguson, Jay Shaffer, Alyssa Thornburg(t)		RESL		Signature: _____			
<b>ICS 204</b>			Date/Time: 8/26/2023 2200				Personnel Count: 214			



# ASSIGNMENT LIST (ICS 204 WF)

CONTROLLED UNCLASSIFIED  
INFORMATION//BASIC

<b>1. Incident Name:</b> <b>2023 SRF Lightning Complex</b>	<b>2. Operational Period:</b> Date From: 08/27/23    Date To: 08/28/23 Time From: 0700    Time To: 0700	<b>3. Branch</b> <b>Division</b>  <b>X</b> <b>J</b>  Page 2 of 2    Juliet
---	---	--

<b>4. Operations Personnel:</b>	
Operations Section Chief: <b>Patrick Russell, Travis Thane(t)</b>	Night Ops:
Branch Director: <b>Rod Mendes, Mike Hildebrand (t)</b>	Branch Safety: <b>Matt Lipson</b>
Division/Group Supervisor: <b>Anna Wright, Ry Phipps(t)</b>	Air Attack:

<b>5. Resources Assigned:</b>		<b>**RESOURCES IN BOLD ARE 12HR, UNBOLDED ARE 24HR**</b>					
Resource Identifier	ALS	LWD	Leader	Personnel	Request #	Hours	Reporting Location
<b>ENG6 A1 FIRESTORM 5</b>		<b>9/5</b>	<b>Donald Lafferty</b>	<b>3</b>	<b>E-162</b>	<b>0700-2100</b>	<b>Orleans Spike</b>
<b>DOZ2 DARRAH LOGGING 1077</b>		<b>9/5</b>	<b>Keith Darrah</b>	<b>1</b>	<b>E-6</b>	<b>0700-2100</b>	<b>Orleans Spike</b>
<b>DOZ2 CHAMBERS LOGGING</b>		<b>9/1</b>	<b>Daniel Linton</b>	<b>1</b>	<b>E-19</b>	<b>0700-2100</b>	<b>Orleans Spike</b>
<b>EXC MOORE</b>		<b>9/2</b>	<b>Sonny Moore</b>	<b>2</b>	<b>E-16</b>	<b>0700-2100</b>	<b>Orleans Spike</b>
<b>FMOD NORTH ZONE FALLERS</b>		<b>8/30</b>	<b>Mike Robins</b>	<b>2</b>	<b>O-57</b>	<b>0700-2100</b>	<b>Orleans Spike</b>
<b>FMOD UNDERDOG TIMBER FALLERS</b>		<b>8/31</b>	<b>Richard Brown</b>	<b>2</b>		<b>0700-2100</b>	<b>Orleans Spike</b>
<b>TFLD (t) RUIZ</b>		<b>8/29</b>	<b>Andres Ruiz</b>	<b>1</b>	<b>O-221</b>	<b>0700-2100</b>	<b>Orleans Spike</b>
<b>HEQB DVORIN</b>		<b>9/3</b>	<b>Marshall Dvorin</b>	<b>1</b>	<b>O-276</b>	<b>0700-2100</b>	<b>Orleans Spike</b>
<b>HEQB WILLIAMS</b>		<b>9/6</b>	<b>Brian Williams</b>	<b>1</b>	<b>O-279</b>	<b>0700-2100</b>	<b>Orleans Spike</b>
<b>HEQB RENZ</b>		<b>9/8</b>	<b>Tanner Renz</b>	<b>1</b>	<b>O-352</b>	<b>0700-2100</b>	<b>Orleans Spike</b>
<b>EMPF STODDARD</b>		<b>9/5</b>	<b>Matt Stoddard</b>	<b>1</b>	<b>O-93</b>	<b>0700-2100</b>	<b>Orleans Spike</b>
<b>EMPF CHRISTY</b>		<b>9/4</b>	<b>Julian Christy</b>	<b>1</b>	<b>O-90</b>	<b>0700-2100</b>	<b>Orleans Spike</b>
<b>SOFR FOWLER</b>		<b>9/8</b>	<b>Joseph Fowler</b>	<b>1</b>	<b>O-361</b>	<b>0700-2100</b>	<b>Orleans Spike</b>
<b>SOFR SOUDER</b>		<b>9/9</b>	<b>Ryan Souder</b>	<b>1</b>	<b>O-360</b>	<b>0700-2100</b>	<b>Orleans Spike</b>

**6. Work Assignments:**  
 Prepare to utilize indirect firing strategies to secure control lines from the J/Z break through DP14 and along the control line to the north to DP11 to reduce fire intensity on impact.  
 Construct control line from DP11 to DP17 to limit western fire progression and to mitigate fire impact to the Orleans communities.

**7. Special Instructions:**  
 Coordinate with READs to validate control line locations prior to implementation.  
 Do not use community hydrants unless there is fire impact to values at risk. Utilize drafting as primary water source.  
 CULS Nick Hillman, Jessica Conrad, Jason Nez (Arch) and Sarah Brey(t) working across DIV J and DIV Z.

<b>8. Communications</b>								
Name	Ch	Function	Rx Freq	Rx Tone	Tx Freq	Tx Tone	Mode	Notes
NIFC C44	2	COMMAND	170.7625	(T7) 167.9	165.6250	(T7) 167.9	A	Tone 7
VFIRE 23	7	TACTICAL	154.2950	(T6) 156.7	154.2950	(T6) 156.7	A	Tone 6
A/G CMD	12	TACTICAL	167.8125		167.8125		A	
A/G TAC	13	TACTICAL	172.5500		172.5500		A	
CALCORD	15	TACTICAL	156.0750	(T6) 156.7	156.0750	(T6) 156.7	A	MEDICAL A/G
AIR GUARD	16		168.6250		168.6250	(T1) 110.9	A	

**9. Prepared by: Name:** Jeff Ferguson, Jay Shaffer, Alyssa Thornburg(t)      RESL      Signature: \_\_\_\_\_  
**ICS 204**      Date/Time: 8/26/2023 2200      Personnel Count: 19



# ASSIGNMENT LIST (ICS 204 WF)

CONTROLLED UNCLASSIFIED  
INFORMATION//BASIC

<b>1. Incident Name:</b>	<b>2. Operational Period:</b>	<b>3. Branch</b>	<b>Division</b>
<b>2023 SRF Lightning Complex</b>	Date From: 08/27/23    Date To: 08/28/23 Time From: 0700    Time To: 0700	<b>X</b>	<b>Y</b>
<b>4. Operations Personnel:</b>		Page 1 of 2	Yankee

Operations Section Chief: <b>Patrick Russell, Travis Thane(t)</b>	Night Ops:
Branch Director: <b>Rod Mendes, Mike Hildebrand (t)</b>	Branch Safety: <b>Matt Lipson</b>
Division/Group Supervisor: <b>Robert McClellan, Jamie Willburn(t)</b>	Air Attack:

5. Resources Assigned:		**RESOURCES IN BOLD ARE 12HR, UNBOLDED ARE 24HR**					
Resource Identifier	ALS	LWD	Leader	Personnel	Request #	Hours	Reporting Location
ENG3 DEBEQUE FPD 82		9/5	<b>Jason Lee</b>	4	E-107	0700-2100	Orleans Spike
ENG3 SAND HOLLOW B22		9/7	<b>Derek Davison</b>	4	E-223	0700-2100	Orleans Spike
ENG4 LITE EM UP 101		9/5	<b>Bob Viger</b>	1	E-101	0700-2100	Orleans Spike
ENG4 BLM E478		9/5	<b>Nathanial Green</b>	5	E-167	0700-2100	Orleans Spike
ENG4 FLASHBACK		9/6			E-168	0700-2100	Orleans Spike
ENG4 CROWN CHASER 90		9/6	<b>Richard Walczyk</b>	1	E-169	0700-2100	Orleans Spike
ENG4 BLUE MTN FIRE		9/7	<b>James Dittrich</b>	3	E-171	0700-2100	Orleans Spike
ENG5 STONE MTN FIRE E-102		9/5	<b>Adam Gadeberg</b>	3	E-102	0700-2100	Orleans Spike
ENG5 STONE MTN FIRE E-157		9/5	<b>Jonathan Villareal</b>	3	E-157	0700-2100	Orleans Spike
ENG5 BLACKSTONE 1028		9/5	<b>Josh Richards</b>	3	E-160	0700-2100	Orleans Spike
ENG6 WESTERN FIRE 323		9/5	<b>Derrick Holdstock</b>	3	E-20	0700-2100	Orleans Spike
ENG6 A1 FIRESTORM 6		9/5	<b>Noah Lafferty</b>	3	E-94	0700-2100	Orleans Spike
ENG6 FREMONT CO		9/4	<b>Chaz Brown</b>	3	E-111	0700-2100	Orleans Spike
ENG6 HI COUNTRY		9/5	<b>Zach Mostad</b>	3	E-96	0700-2100	Orleans Spike
ENG6 GRAND VALLEY		9/6	<b>Tony Wade</b>	2	E-108	0700-2100	Orleans Spike
ENG6 WEST METRO FIRE BRUSH 9		9/4	<b>Jonathan Ashford</b>	4	E-112	0700-2100	Orleans Spike
ENG6 114 FIRECAT		9/5	<b>Matt Soiland</b>	3	E-114	0700-2100	Orleans Spike
ENG6 ARCHER MTN		9/4	<b>Colton Kenny</b>	3	E-159	0700-2100	Orleans Spike

**6. Work Assignments:**  
 Construct control line from the Y/Z break to the east to limit southern fire progression.  
 Create defensible space and implement other defensible measures to reduce adverse fire impact to the values at risk along the Salmon River Rd.

**7. Special Instructions:**  
 Do not use community hydrants unless there is fire impact to values at risk. Utilize drafting as primary water source.  
 READs Heather Rickard, Nick Hillman, and Jessica Conrad working across Branch X.

8. Communications								
Name	Ch	Function	Rx Freq	Rx Tone	Tx Freq	Tx Tone	Mode	Notes
NIFC C44	2	COMMAND	170.7625	(T7) 167.9	165.6250	(T7) 167.9	A	Tone 7
VTAC12	11	TACTICAL	154.4525	(T6) 156.7	154.4525	(T6) 156.7	A	Tone 6
A/G CMD	12	TACTICAL	167.8125		167.8125		A	
A/G TAC	13	TACTICAL	172.5500		172.5500		A	
CALCORD	15	TACTICAL	156.0750	(T6) 156.7	156.0750	(T6) 156.7	A	MEDICAL A/G
AIR GUARD	16		168.6250		168.6250	(T1) 110.9	A	

**9. Prepared by: Name:** Jeff Ferguson, Jay Shaffer, Alyssa Thornburg(t)      RESL      Signature: \_\_\_\_\_

ICS 204      Date/Time: 8/26/2023 2200      Personnel Count: 51

# ASSIGNMENT LIST (ICS 204 WF)

CONTROLLED UNCLASSIFIED  
INFORMATION//BASIC

<b>1. Incident Name:</b> <b>2023 SRF Lightning Complex</b>	<b>2. Operational Period:</b> Date From: 08/27/23    Date To: 08/28/23 Time From: 0700          Time To: 0700	<b>3. Branch</b> <b>X</b>	<b>Division</b> <b>Y</b>
<b>4. Operations Personnel:</b>		Page 2 of 2	Yankee

Operations Section Chief: <b>Patrick Russell, Travis Thane(t)</b>	Night Ops:
Branch Director: <b>Rod Mendes, Mike Hildebrand (t)</b>	Branch Safety: <b>Matt Lipson</b>
Division/Group Supervisor: <b>Robert McClellan, Jamie Willburn(t)</b>	Air Attack:

<b>5. Resources Assigned:</b>		<b>**RESOURCES IN BOLD ARE 12HR, UNBOLDED ARE 24HR**</b>					
Resource Identifier	ALS	LWD	Leader	Personnel	Request #	Hours	Reporting Location
<b>ENG6 FIRE WORKS LLC</b>		<b>9/5</b>	<b>Tom Mathews</b>	<b>3</b>	<b>E-165</b>	<b>0700-2100</b>	<b>Orleans Spike</b>
<b>ENG6 MONTROSE</b>		<b>9/5</b>	<b>Brent Stanley</b>	<b>3</b>	<b>E-117</b>	<b>0700-2100</b>	<b>Orleans Spike</b>
<b>REMS ADVENTURE MEDICS</b>		<b>9/8</b>	<b>Benaniah Sawyer</b>	<b>4</b>	<b>O-263</b>	<b>0700-2100</b>	<b>Orleans Spike</b>
<b>EMTF ORNELAS</b>		<b>8/31</b>	<b>Pablo Ornelas</b>	<b>1</b>	<b>O-235</b>	<b>0700-2100</b>	<b>Orleans Spike</b>
<b>EMTF SOTO</b>		<b>9/5</b>	<b>Enrique Soto</b>	<b>1</b>	<b>O-234</b>	<b>0700-2100</b>	<b>Orleans Spike</b>
							Orleans Spike

**6. Work Assignments:**  
 Construct control line from the Y/Z break to the east to limit southern fire progression.  
 Create defensible space and implement other defensible measures to reduce adverse fire impact to the values at risk along the Salmon River Rd.

**7. Special Instructions:**  
 Do not use community hydrants unless there is fire impact to values at risk. Utilize drafting as primary water source.  
 READs Heather Rickard, Nick Hillman, and Jessica Conrad working across Branch X.

**8. Communications**

Name	Ch	Function	Rx Freq	Rx Tone	Tx Freq	Tx Tone	Mode	Notes
NIFC C44	2	COMMAND	170.7625	(T7) 167.9	165.6250	(T7) 167.9	A	Tone 7
VTAC12	11	TACTICAL	154.4525	(T6) 156.7	154.4525	(T6) 156.7	A	Tone 6
A/G CMD	12	TACTICAL	167.8125		167.8125		A	
A/G TAC	13	TACTICAL	172.5500		172.5500		A	
CALCORD	15	TACTICAL	156.0750	(T6) 156.7	156.0750	(T6) 156.7	A	MEDICAL A/G
AIR GUARD	16		168.6250		168.6250	(T1) 110.9	A	

**9. Prepared by: Name:** Jeff Ferguson, Jay Shaffer, Alyssa Thornburg(t)          RESL

Signature: \_\_\_\_\_

**ICS 204**          Date/Time: 8/26/2023 2200          Personnel Count: 9



# ASSIGNMENT LIST (ICS 204 WF)

CONTROLLED UNCLASSIFIED  
INFORMATION//BASIC

<b>1. Incident Name:</b>	<b>2. Operational Period:</b>	<b>3. Branch</b>	<b>Division</b>
<b>2023 SRF Lightning Complex</b>	Date From: 08/27/23    Date To: 08/28/23 Time From: 0700    Time To: 0700	<b>X</b>	<b>Z</b>
<b>4. Operations Personnel:</b>		Page 1 of 1	Zulu

Operations Section Chief: <b>Patrick Russell, Travis Thane(t)</b>	Night Ops:
Branch Director: <b>Rod Mendes, Mike Hildebrand (t)</b>	Branch Safety: <b>Matt Lipson</b>
Division/Group Supervisor: <b>Jason McCarty, Greg Herrera(t)</b>	Air Attack:

5. Resources Assigned:								**RESOURCES IN BOLD ARE 12HR, UNBOLDED ARE 24HR**							
Resource Identifier	ALS	LWD	Leader	Personnel	Request #	Hours	Reporting Location								
HC1 EL CARISO IHC		<b>8/30</b>	<b>Josh Acevedo</b>	20	<b>C-1</b>	<b>0700-2100</b>	Orleans Spike								
HC2 PACIFIC COAST C-8		<b>9/3</b>	<b>Jesse Miracle</b>	20	<b>C-8</b>	<b>0700-2100</b>	Orleans Spike								
HC2 PACIFIC COAST C-16		<b>9/3</b>	<b>Ubaldo Vargas</b>	20	<b>C-16</b>	<b>0700-2100</b>	Orleans Spike								
DO22 ADAMS		<b>8/30</b>	<b>John Smith</b>	2	<b>E-1</b>	<b>0700-2100</b>	Orleans Spike								
SMKJ TRUCK #1		<b>8/28</b>	<b>Cole Skinner</b>			<b>0700-2100</b>	Orleans Spike								
SMKJ TRUCK #2		<b>8/28</b>	<b>Cole Skinner</b>			<b>0700-2100</b>	Orleans Spike								
EMPF PROUTY		<b>9/3</b>	<b>Sean Prouty</b>	1	<b>O-286</b>	<b>0700-2100</b>	Orleans Spike								
EMTF HERNANDEZ (t)		<b>9/2</b>	<b>Raul Hernandez</b>	1	<b>O-208</b>	<b>0700-2100</b>	Orleans Spike								

**6. Work Assignments:**  
 Utilize firing techniques from DP15 to the J/Z break to secure the indirect control line that will limit southern fire progression.  
 Construct control line from DP15 to the Y/Z break to limit southern fire progression.

**7. Special Instructions:**  
 Coordinate with READs to validate control line locations prior to implementation.  
 Do not use community hydrants unless there is fire impact to values at risk. Utilize drafting as primary water source.  
 CULS Nick Hillman, Jessica Conrad, Jason Nez (Arch) and Sarah Brey(t) working across DIV J and DIV Z.

8. Communications								
Name	Ch	Function	Rx Freq	Rx Tone	Tx Freq	Tx Tone	Mode	Notes
NIFC C44	2	COMMAND	170.7625	(T7) 167.9	165.6250	(T7) 167.9	A	Tone 7
VTAC11	10	TACTICAL	151.1375	(T6) 156.7	151.1375	(T6) 156.7	A	Tone 6
A/G CMD	12	TACTICAL	167.8125		167.8125		A	
A/G TAC	13	TACTICAL	172.5500		172.5500		A	
CALCORD	15	TACTICAL	156.0750	(T6) 156.7	156.0750	(T6) 156.7	A	MEDICAL A/G
AIR GUARD	16		168.6250		168.6250	(T1) 110.9	A	

<b>9. Prepared by: Name:</b>	Jeff Ferguson, Jay Shaffer, Alyssa Thornburg(t)	RESL
		Signature: _____
<b>ICS 204</b>	Date/Time: 8/26/2023 2200	Personnel Count: 64



# ASSIGNMENT LIST (ICS 204 WF)

CONTROLLED UNCLASSIFIED  
INFORMATION//BASIC

<b>1. Incident Name:</b> <b>2023 SRF Lightning Complex</b>	<b>2. Operational Period:</b> Date From: 08/27/23    Date To: 08/28/23 Time From: 0700        Time To: 0700	<b>3. Branch</b> <b>Division</b>  <b>X</b> <b>Structure Grp</b>
---	---	---

**4. Operations Personnel:** Page 1 of 4

Operations Section Chief: <b>Patrick Russell, Travis Thane(t)</b>	Night Ops:
Branch Director: <b>Rod Mendes, Mike Hildebrand (t)</b>	Branch Safety: <b>Matt Lipson</b>
Division/Group Supervisor: <b>Brian Heath, Mike Evers(t)</b>	Air Attack:

**5. Resources Assigned:** \*\*RESOURCES IN BOLD ARE 12HR, UNBOLDED ARE 24HR\*\*

Resource Identifier	ALS	LWD	Leader	Personnel	Request #	Hours	Reporting Location
<b>HC2 SUNSET FORESTRY INC</b>		<b>9/5</b>	<b>Adam Mejia</b>	20	<b>C-40</b>	<b>0700-2100</b>	<b>Orleans Spike</b>
<b>S/T 4807A</b>		<b>9/5</b>	<b>Jayme Ramirez</b>		<b>E-86</b>	<b>0700-2100</b>	<b>Orleans Spike</b>
<b>S/T 6840A</b>		<b>9/5</b>	<b>Jeff Hernandez</b>	21	<b>E-87</b>	<b>0700-2100</b>	<b>Orleans Spike</b>
<b>S/T 6604C</b>		<b>8/30</b>	<b>Crawford Gunn</b>	25	<b>E-2</b>	<b>0700-2100</b>	<b>Orleans Spike</b>
<b>S/T 2075C</b>		<b>9/6</b>	<b>Chris Emmons</b>	19	<b>E-88</b>	<b>0700-2100</b>	<b>Orleans Spike</b>

**TASK FORCE 1**

<b>TFLD GUNDLE</b>		<b>9/5</b>	<b>Collin Gundle</b>	1	<b>O-182</b>	<b>0700-2100</b>	<b>Orleans Spike</b>
<b>ENG3 J3 CONTRACTING 32</b>		<b>9/5</b>		3	<b>E-17</b>	<b>0700-2100</b>	<b>Orleans Spike</b>
<b>ENG4 WINSTON</b>		<b>9/4</b>	<b>Robin Winston</b>	3	<b>E-144</b>	<b>0700-2100</b>	<b>Orleans Spike</b>
<b>ENG5 PVT BUSCHER</b>		<b>9/3</b>	<b>Robert Rennich</b>	3	<b>E-91</b>	<b>0700-2100</b>	<b>Orleans Spike</b>
<b>ENG6 OAK CREEK FIRE</b>		<b>9/5</b>	<b>Tim Hohnbaum</b>	4	<b>E-110</b>	<b>0700-2100</b>	<b>Orleans Spike</b>
<b>ENG6 SUNDANCE E-118</b>		<b>9/6</b>		3	<b>E-118</b>	<b>0700-2100</b>	<b>Orleans Spike</b>
<b>ENG6 GREEN MOUNTAIN</b>		<b>9/4</b>		3	<b>E-136</b>	<b>0700-2100</b>	<b>Orleans Spike</b>

**TASK FORCE 2**

<b>TFLD MARSALA</b>		<b>8/28</b>		1	<b>E-212</b>	<b>0700-2100</b>	<b>Orleans Spike</b>
<b>ENG3 CORONA 180</b>		<b>8/31</b>	<b>Klinton Smuda</b>		<b>E-4</b>	<b>0700-2100</b>	<b>Orleans Spike</b>
<b>ENG3 FULL SUPPRESSION</b>		<b>9/1</b>	<b>Eric Spinter</b>		<b>E-14</b>	<b>0700-2100</b>	<b>Orleans Spike</b>

**6. Work Assignments:**  
Create defensible space and implement other defensible measures to reduce adverse fire impact to the values at risk in the Orleans communities.

**7. Special Instructions:**  
Identify resources to respond to new starts within the complex footprint.  
Do not use community hydrants unless there is fire impact to values at risk. Utilize drafting as primary water source.  
READs Heather Rickard, Nick Hillman, and Jessica Conrad working across Branch X.

**8. Communications**

Name	Ch	Function	Rx Freq	Rx Tone	Tx Freq	Tx Tone	Mode	Notes
NIFC C44	2	COMMAND	170.7625	(T7) 167.9	165.6250	(T7) 167.9	A	Tone 7
VFIRE 25	9	TACTICAL	154.2875	(T6) 156.7	154.2875	(T6) 156.7	A	Tone 6
A/G CMD	12	TACTICAL	167.8125		167.8125		A	
A/G TAC	13	TACTICAL	172.5500		172.5500		A	
CALCORD	15	TACTICAL	156.0750	(T6) 156.7	156.0750	(T6) 156.7	A	MEDICAL A/G
AIR GUARD	16		168.6250		168.6250	(T1) 110.9	A	

**9. Prepared by: Name:** Jeff Ferguson, Jay Shaffer, Alyssa Thornburg(t)                      RESL                      Signature: \_\_\_\_\_

**ICS 204**                      Date/Time: 8/26/2023 2200                      Personnel Count: 106

# ASSIGNMENT LIST (ICS 204 WF)

CONTROLLED UNCLASSIFIED  
INFORMATION//BASIC

<b>1. Incident Name:</b> 2023 SRF Lightning Complex		<b>2. Operational Period:</b> Date From: 08/27/23    Date To: 08/28/23 Time From: 0700            Time To: 0700				<b>3. Branch</b>  <b>X</b>		<b>Division</b>  <b>Structure Grp</b>	
<b>4. Operations Personnel:</b>						Page 2 of 4			
Operations Section Chief: <b>Patrick Russell, Travis Thane(t)</b>				Night Ops:					
Branch Director: <b>Rod Mendes, Mike Hildebrand (t)</b>				Branch Safety: <b>Matt Lipson</b>					
Division/Group Supervisor: <b>Brian Heath, Mike Evers(t)</b>				Air Attack:					
<b>5. Resources Assigned:</b>		<b>**RESOURCES IN BOLD ARE 12HR, UNBOLDED ARE 24HR**</b>							
Resource Identifier	ALS	LWD	Leader	Personnel	Request #	Hours	Reporting Location		
<b>TASK FORCE 2 CONT.</b>									
ENG3 J3 CONTRACTING 41		9/6		3	E-97	0700-2100	Orleans Spike		
ENG3 BLUE LAKE 8838		8/28	Lester White	4	E-128	0700-2100	Orleans Spike		
ENG6 PVT AAA FORESTRY		9/1	Chris Martin	4	E-37	0700-2100	Orleans Spike		
<b>TASK FORCE 3</b>									
TFLD KINLEY						0700-2100	Orleans Spike		
ENG3 STEAMBOAT SPRINGS		8/29	Leighton White	4	E-4	0700-2100	Orleans Spike		
ENG3 CASTLE MTN E-12		9/5	Blaine Fifield	4	E-12	0700-2100	Orleans Spike		
ENG3 J3 CONTRACTING 39		9/5	AS Klotz	3	E-26	0700-2100	Orleans Spike		
ENG3 FIREANT 321		9/5	Zach Anthis	4	E-151	0700-2100	Orleans Spike		
ENG3 FIREANT 322		9/5	Mark Bennett		E-152	0700-2100	Orleans Spike		
ENG4 NV HTF 452 E-21		9/4	Shawn Krajewski	5	E-21	0700-2100	Orleans Spike		
ENG4 EARTH INDUSTRIES		9/4	Allan Robertson	3	E-135	0700-2100	Orleans Spike		
ENG5 BUSCHER 616		9/5	Steve Kinley	3	E-163	0700-2100	Orleans Spike		
ENG6 SAND HOLLOW FD B21		8/31	Jonathon Thomas	3	E-137	0700-2100	Orleans Spike		
ENG6 BIRD DOG FIRE E-142		9/5		3	E-142	0700-2100	Orleans Spike		
<b>6. Work Assignments:</b>									
Create defensible space and implement other defensible measures to reduce adverse fire impact to the values at risk in the Orleans communities.									
<b>7. Special Instructions:</b>									
Identify resources to respond to new starts within the complex footprint. Do not use community hydrants unless there is fire impact to values at risk. Utilize drafting as primary water source. READs Heather Rickard, Nick Hillman, and Jessica Conrad working across Branch X.									
<b>8. Communications</b>									
Name	Ch	Function	Rx Freq	Rx Tone	Tx Freq	Tx Tone	Mode	Notes	
NIFC C44	2	COMMAND	170.7625	(T7) 167.9	165.6250	(T7) 167.9	A	Tone 7	
VFIRE 25	9	TACTICAL	154.2875	(T6) 156.7	154.2875	(T6) 156.7	A	Tone 6	
A/G CMD	12	TACTICAL	167.8125		167.8125		A		
A/G TAC	13	TACTICAL	172.5500		172.5500		A		
CALCORD	15	TACTICAL	156.0750	(T6) 156.7	156.0750	(T6) 156.7	A	MEDICAL A/G	
AIR GUARD	16		168.6250		168.6250	(T1) 110.9	A		
<b>9. Prepared by: Name:</b>			Jeff Ferguson, Jay Shaffer, Alyssa Thornburg(t)		RESL		Signature: _____		
<b>ICS 204</b>		Date/Time: 8/26/2023 2200			Personnel Count: 43				



# ASSIGNMENT LIST (ICS 204 WF)

CONTROLLED UNCLASSIFIED  
INFORMATION//BASIC

<b>1. Incident Name:</b> <b>2023 SRF Lightning Complex</b>			<b>2. Operational Period:</b> Date From: 08/27/23    Date To: 08/28/23 Time From: 0700    Time To: 0700				<b>3. Branch</b> <b>X</b>		<b>Division</b> <b>Structure Grp</b>	
<b>4. Operations Personnel:</b>							Page 3 of 4			
Operations Section Chief: <b>Patrick Russell, Travis Thane(t)</b>					Night Ops:					
Branch Director: <b>Rod Mendes, Mike Hildebrand (t)</b>					Branch Safety: <b>Matt Lipson</b>					
Division/Group Supervisor: <b>Brian Heath, Mike Evers(t)</b>					Air Attack:					
<b>5. Resources Assigned:</b>			<b>**RESOURCES IN BOLD ARE 12HR, UNBOLDED ARE 24HR**</b>							
Resource Identifier	ALS	LWD	Leader	Personnel	Request #	Hours	Reporting Location			
<b>TASK FORCE 4</b>										
ENG6 NATIONAL FIRE 8		9/6	<b>Juniper Odell</b>	3	<b>E-98</b>	<b>0700-2100</b>	<b>Orleans Spike</b>			
ENG6 BRIGHTON FIRE		9/5	<b>Brian Guyer</b>	3	<b>E-100</b>	<b>0700-2100</b>	<b>Orleans Spike</b>			
ENG6 NATIONAL WILDLAND FIRE		9/6	<b>Brian Ennis</b>	3	<b>E-103</b>	<b>0700-2100</b>	<b>Orleans Spike</b>			
<b>TASK FORCE 5</b>										
ENG3 J3 CONTRACTING E-131		9/5	<b>Ben Perry</b>	3	<b>E-131</b>	<b>0700-2100</b>	<b>Orleans Spike</b>			
ENG4 LONE PEAK 492		9/3	<b>Luis Ruis</b>	6	<b>E-90</b>	<b>0700-2100</b>	<b>Orleans Spike</b>			
ENG6 FIRE TRAX		9/6	<b>Jeff Herron</b>	3	<b>E-106</b>	<b>0700-2100</b>	<b>Orleans Spike</b>			
ENG6 E 6541		9/4	<b>Erik Acker</b>	4	<b>E-140</b>	<b>0700-2100</b>	<b>Orleans Spike</b>			
ENG6 E631		9/6	<b>Travis Adcock</b>	4	<b>E-173</b>	<b>0700-2100</b>	<b>Orleans Spike</b>			
<b>END OF TASK FORCE 5</b>										
ENG3 J3 CONTRACTING E-166		9/6		4	<b>E-166</b>	<b>0700-2100</b>	<b>Orleans Spike</b>			
ENG6 OREGON WOODS		9/6	<b>Lonny Hanson</b>	3	<b>E-95</b>	<b>0700-2100</b>	<b>Orleans Spike</b>			
ENG6 OUTBACK 113		9/6	<b>Rick Manchester</b>	3	<b>E-113</b>	<b>0700-2100</b>	<b>Orleans Spike</b>			
ENG6 RING OF FIRE		9/6	<b>Ryan Schlater</b>	3	<b>E-170</b>	<b>0700-2100</b>	<b>Orleans Spike</b>			
ENG6 WILDLAND FIRE SERVICE		9/6	<b>Mehg Chuor</b>	3	<b>E-172</b>	<b>0700-2100</b>	<b>Orleans Spike</b>			
ENG6 APACHE-SITGREAVES		9/6	<b>Daniel Rubush</b>	1	<b>E-175</b>	<b>0700-2100</b>	<b>Orleans Spike</b>			
ENG6 SARATOGA SPRINGS		9/7	<b>Taylor Olsen</b>	3	<b>E-224</b>	<b>0700-2100</b>	<b>Orleans Spike</b>			
<b>6. Work Assignments:</b> Create defensible space and implement other defensible measures to reduce adverse fire impact to the values at risk in the Orleans communities.										
<b>7. Special Instructions:</b> Identify resources to respond to new starts within the complex footprint. Do not use community hydrants unless there is fire impact to values at risk. Utilize drafting as primary water source. READs Heather Rickard, Nick Hillman, and Jessica Conrad working across Branch X.										
<b>8. Communications</b>										
Name	Ch	Function	Rx Freq	Rx Tone	Tx Freq	Tx Tone	Mode	Notes		
NIFC C44	2	COMMAND	170.7625	(T7) 167.9	165.6250	(T7) 167.9	A	Tone 7		
VFIRE 25	9	TACTICAL	154.2875	(T6) 156.7	154.2875	(T6) 156.7	A	Tone 6		
A/G CMD	12	TACTICAL	167.8125		167.8125		A			
A/G TAC	13	TACTICAL	172.5500		172.5500		A			
CALCORD	15	TACTICAL	156.0750	(T6) 156.7	156.0750	(T6) 156.7	A	MEDICAL A/G		
AIR GUARD	16		168.6250		168.6250	(T1) 110.9	A			
<b>9. Prepared by: Name:</b>			Jeff Ferguson, Jay Shaffer, Alyssa Thornburg(t)		RESL		Signature: _____			
<b>ICS 204</b>		Date/Time: 8/26/2023 2200			Personnel Count: 49					



# ASSIGNMENT LIST (ICS 204 WF)

CONTROLLED UNCLASSIFIED  
INFORMATION//BASIC

<b>1. Incident Name:</b>		<b>2. Operational Period:</b>				<b>3. Branch</b>		<b>Division</b>	
<b>2023 SRF Lightning Complex</b>		Date From: 08/27/23	Date To: 08/28/23			<b>X</b>		<b>Structure Grp</b>	
		Time From: 0700	Time To: 0700						
<b>4. Operations Personnel:</b>						<b>Page 4 of 4</b>			
Operations Section Chief: <b>Patrick Russell, Travis Thane(t)</b>				Night Ops:					
Branch Director: <b>Rod Mendes, Mike Hildebrand (t)</b>				Branch Safety: <b>Matt Lipson</b>					
Division/Group Supervisor: <b>Brian Heath, Mike Evers(t)</b>				Air Attack:					
<b>5. Resources Assigned:</b>		<b>**RESOURCES IN BOLD ARE 12HR, UNBOLDED ARE 24HR**</b>							
Resource Identifier	ALS	LWD	Leader	Personnel	Request #	Hours	Reporting Location		
<b>DOZ3 DARRAH</b>			<b>Jake Moore</b>	2	<b>E-6</b>	<b>0700-2100</b>	<b>Orleans Spike</b>		
<b>MAST COTTONWOOD</b>					<b>E-10</b>	<b>0700-2100</b>	<b>Orleans Spike</b>		
<b>CHP DAVIS CORP</b>			<b>Jose Fabela</b>	3	<b>E-192</b>	<b>0700-2100</b>	<b>Orleans Spike</b>		
<b>CHP2 SISKIYOU TREES PLUS</b>				3	<b>E-193</b>	<b>0700-2100</b>	<b>Orleans Spike</b>		
<b>CHIP BIG BARK</b>		9/8		3	<b>E-243</b>	<b>0700-2100</b>	<b>Orleans Spike</b>		
<b>CHIP RAPID RESPONSE</b>		9/8	<b>Rob Mayo</b>	3	<b>E-244</b>	<b>0700-2100</b>	<b>Orleans Spike</b>		
<b>WT2 PEEPLES VALLEY</b>		8/30			<b>E-1</b>	<b>0700-2100</b>	<b>Orleans Spike</b>		
<b>WT2 KIT CONTRACTING</b>			<b>Tony Hill</b>	1	<b>E-5</b>	<b>0700-2100</b>	<b>Orleans Spike</b>		
<b>WT2 DARRAH LOGGING E-15</b>			<b>Rodney Browne</b>	1	<b>E-15</b>	<b>0700-2100</b>	<b>Orleans Spike</b>		
<b>WT2 DARRAH LOGGING E-18</b>			<b>Richard Kincaid</b>	1	<b>E-18</b>	<b>0700-2100</b>	<b>Orleans Spike</b>		
<b>WT2 SHAN CREEK</b>		8/30	<b>Zion Gottschalk</b>	1	<b>E-20</b>	<b>0700-2100</b>	<b>Orleans Spike</b>		
<b>WT2 PRO DUMP</b>			<b>Mike Seabourn</b>	1	<b>E-22</b>	<b>0700-2100</b>	<b>Orleans Spike</b>		
<b>EMPF BILLEDEAUX</b>			<b>Jeremy Billedeaux</b>	1	<b>O-184</b>	<b>0700-2100</b>	<b>Orleans Spike</b>		
<b>EMPF HAGIE</b>		9/5	<b>Tyler Hagie</b>	1	<b>O-185</b>	<b>0700-2100</b>	<b>Orleans Spike</b>		
<b>PUMPZILLA</b>		9/5	<b>Abel Pini</b>	2	<b>S-74</b>	<b>0700-2100</b>	<b>Orleans Spike</b>		
<b>6. Work Assignments:</b>									
Create defensible space and implement other defensible measures to reduce adverse fire impact to the values at risk in the Orleans communities.									
<b>7. Special Instructions:</b>									
Identify resources to respond to new starts within the complex footprint.									
Do not use community hydrants unless there is fire impact to values at risk. Utilize drafting as primary water source.									
READs Heather Rickard, Nick Hillman, and Jessica Conrad working across Branch X.									
<b>8. Communications</b>									
Name	Ch	Function	Rx Freq	Rx Tone	Tx Freq	Tx Tone	Mode	Notes	
NIFC C44	2	COMMAND	170.7625	(T7) 167.9	165.6250	(T7) 167.9	A	Tone 7	
VFIRE 25	9	TACTICAL	154.2875	(T6) 156.7	154.2875	(T6) 156.7	A	Tone 6	
A/G CMD	12	TACTICAL	167.8125		167.8125		A		
A/G TAC	13	TACTICAL	172.5500		172.5500		A		
CALCORD	15	TACTICAL	156.0750	(T6) 156.7	156.0750	(T6) 156.7	A	MEDICAL A/G	
AIR GUARD	16		168.6250		168.6250	(T1) 110.9	A		
<b>9. Prepared by: Name:</b>		Jeff Ferguson, Jay Shaffer, Alyssa Thornburg(t)			RESL		Signature: _____		
<b>ICS 204</b>		Date/Time: 8/26/2023 2200			Personnel Count: 0				

# ASSIGNMENT LIST (ICS 204 WF)

CONTROLLED UNCLASSIFIED  
INFORMATION//BASIC

<b>1. Incident Name:</b> <b>2023 SRF Lightning Complex</b>	<b>2. Operational Period:</b> Date From: 08/27/23    Date To: 08/28/23 Time From: 0700    Time To: 0700	<b>3. Branch</b> <b>Division</b>  <b>X</b> <b>R/T/U</b>
---	---	---

Page 1 of 1

<b>4. Operations Personnel:</b>			
Operations Section Chief: <b>Patrick Russell, Travis Thane(t)</b>	Night Ops:		
Branch Director: <b>Rod Mendes, Mike Hildebrand (t)</b>	Branch Safety: <b>Matt Lipson</b>		
Division/Group Supervisor: <b>Eric Darragh, Laurence Williams(t)</b>	Air Attack:		

<b>5. Resources Assigned:</b>		<b>**RESOURCES IN BOLD ARE 12HR, UNBOLDED ARE 24HR**</b>						
Resource Identifier	ALS	LWD	Leader	Personnel	Request #	Hours	Reporting Location	
<b>ENG3 ROCKY MOUNTAIN FIRE</b>		9/1	<b>Cole Stanford</b>	3	<b>E-11</b>	<b>0700-2100</b>	<b>Orleans Spike</b>	
<b>ENG3 COOP UTAH COUNTY</b>		8/27	<b>Josh Lane</b>	4	<b>E-39</b>	<b>0700-2100</b>	<b>Orleans Spike</b>	
<b>ENG6 REDRIDGE 225</b>		9/6	<b>Rich Austin</b>	3	<b>E-225</b>	<b>0700-2100</b>	<b>Orleans Spike</b>	
<b>WT2 PVT GRANIT COMMERCIAL</b>		8/31	<b>Jim Johnson</b>	1	<b>E-21</b>	<b>0700-2100</b>	<b>Orleans Spike</b>	
<b>EMPF FISCHER</b>		9/1	<b>Silas Fischer</b>	1	<b>O-233</b>	<b>0700-2100</b>	<b>Orleans Spike</b>	
<b>EMPF ZUHLKE</b>		9/5	<b>Justin Zuhlke</b>	1	<b>O-189</b>	<b>0700-2100</b>	<b>Orleans Spike</b>	

**6. Work Assignments:**  
Patrol the perimeter of the Div R and mitigate concerns to make escape improbable.  
Div T and Div U are unstaffed

**7. Special Instructions:**  
READs Heather Rickard, Nick Hillman, and Jessica Conrad working across Branch X.

<b>8. Communications</b>								
Name	Ch	Function	Rx Freq	Rx Tone	Tx Freq	Tx Tone	Mode	Notes
NIFC C44	2	COMMAND	170.7625	(T7) 167.9	165.6250	(T7) 167.9	A	Tone 7
VTAC11	10	TACTICAL	151.1375	(T6) 156.7	151.1375	(T6) 156.7	A	Tone 6
A/G CMD	12	TACTICAL	167.8125		167.8125		A	
A/G TAC	13	TACTICAL	172.5500		172.5500		A	
CALCORD	15	TACTICAL	156.0750	(T6) 156.7	156.0750	(T6) 156.7	A	MEDICAL A/G
AIR GUARD	16		168.6250		168.6250	(T1) 110.9	A	

<b>9. Prepared by: Name:</b>	Jeff Ferguson, Jay Shaffer, Alyssa Thornburg(t)	RESL	Signature: _____
<b>ICS 204</b>	Date/Time: 8/26/2023    2200	Personnel Count: 0	



# ASSIGNMENT LIST (ICS 204 WF)

CONTROLLED UNCLASSIFIED  
INFORMATION//BASIC

<b>1. Incident Name:</b> <b>2023 SRF Lightning Complex</b>	<b>2. Operational Period:</b> Date From: 08/27/23    Date To: 08/28/23 Time From: 0700    Time To: 0700	<b>3. Branch</b> <b>XX</b>	<b>Division</b> <b>L</b>
---	---	-------------------------------	-----------------------------

<b>4. Operations Personnel:</b>		Page 1 of 1	Lima
Operations Section Chief:	<b>Patrick Russell, Travis Thane(t)</b>	Night Ops:	
Branch Director:	<b>Ian Morgan, Nathan Arellano (t)</b>	Branch Safety:	<b>Taylor Fernsten</b>
Division/Group Supervisor:	<b>Orlando Genao, Curtis Wayka(t)</b>	Air Attack:	

<b>5. Resources Assigned:</b>		<b>**RESOURCES IN BOLD ARE 12HR, UNBOLDED ARE 24HR**</b>						
Resource Identifier	ALS	LWD	Leader	Personnel	Request #	Hours	Reporting Location	
<b>S/T XSL 1472C</b>		<b>9/6</b>	<b>Brian Lewis</b>	17	<b>E-201</b>	<b>0700-2100</b>	<b>Orleans Spike</b>	
<b>WT2 PVT BLACK KNIGHT</b>		<b>8/30</b>	<b>Dustin Harner</b>	1	<b>E-19</b>	<b>0700-2100</b>	<b>Orleans Spike</b>	
<b>WT2 NORTHWEST FIRE</b>		<b>9/5</b>	<b>James Cravener</b>	2	<b>E-125</b>	<b>0700-2100</b>	<b>Orleans Spike</b>	

**6. Work Assignments:**  
Scout north along the 12N12 for opportunities to utilize indirect control line to limit the northern and eastern fire progression.  
Scout the 13N01 road from DP40 north for opportunities to utilize indirect control line to limit the northern and western fire progression.

**7. Special Instructions:**  
Coordinate with READs to validate control line locations prior to implementation.  
Casy Hague (REAF), Kevin Colegrove (REAF), Eric Blake (READ), Heather Rickard (CULS), Amber Bishop (REAF), Jason Nez (ARCH), Sarah Brey (READ(t), Tim Breen (READ), Roy Sutcliff (READ(t), Roy Ammon (CULS), and Caw Tep Silvia (REAF) are working across Div M, Div N and Div L

<b>8. Communications</b>								
Name	Ch	Function	Rx Freq	Rx Tone	Tx Freq	Tx Tone	Mode	Notes
NIFC C44	2	COMMAND	170.7625	(T7) 167.9	165.6250	(T7) 167.9	A	Tone 7
VFIRE 22	6	TACTICAL	154.2650	(T6) 156.7	154.2650	(T6) 156.7	A	Tone 6
A/G CMD	12	TACTICAL	167.8125		167.8125		A	
A/G TAC	13	TACTICAL	172.5500		172.5500		A	
CALCORD	15	TACTICAL	156.0750	(T6) 156.7	156.0750	(T6) 156.7	A	MEDICAL A/G
AIR GUARD	16		168.6250		168.6250	(T1) 110.9	A	

<b>9. Prepared by: Name:</b>	Jeff Ferguson, Jay Shaffer, Alyssa Thornburg(t)	RESL	Signature: _____
<b>ICS 204</b>	Date/Time: 8/26/2023 2200	Personnel Count:	3

# ASSIGNMENT LIST (ICS 204 WF)

CONTROLLED UNCLASSIFIED  
INFORMATION//BASIC

<b>1. Incident Name:</b>		<b>2. Operational Period:</b>				<b>3. Branch</b>		<b>Division</b>	
<b>2023 SRF Lightning Complex</b>		Date From: 08/27/23	Date To: 08/28/23			<b>XX</b>		<b>M</b>	
		Time From: 0700	Time To: 0700			Page 1 of 3		Mike	
<b>4. Operations Personnel:</b>									
Operations Section Chief: <b>Patrick Russell, Travis Thane(t)</b>				Night Ops:					
Branch Director: <b>Ian Morgan, Nathan Arellano (t)</b>				Branch Safety: <b>Taylor Fernsten</b>					
Division/Group Supervisor: <b>Brian Brennan, Mike Gawronski (t)</b>				Air Attack:					
<b>5. Resources Assigned:</b>									
<b>**RESOURCES IN BOLD ARE 12HR, UNBOLDED ARE 24HR**</b>									
Resource Identifier	ALS	LWD	Leader	Personnel	Request #	Hours	Reporting Location		
HC2 PVT PR REFORESTATION		9/3	<b>Hector Gonzalez</b>	20	<b>C-17</b>	<b>0700-2100</b>	<b>Orleans Spike</b>		
HC2 PVT WILLAMETTE VALLEY		9/3	<b>Nemesio Vargas</b>	20	<b>C-19</b>	<b>0700-2100</b>	<b>Orleans Spike</b>		
HC2 BLUE MOUNTAIN		9/5	<b>Javier Frasta</b>	20	<b>C-37</b>	<b>0700-2100</b>	<b>Orleans Spike</b>		
HC2 BLUE MOUNTAN		9/4	<b>Andrew Duran</b>	20	<b>C-38</b>	<b>0700-2100</b>	<b>Orleans Spike</b>		
HC2 GRIZZLY FIREFIGHTERS		9/6	<b>Akeem Farr</b>	20	<b>C-43</b>	<b>0700-2100</b>	<b>Orleans Spike</b>		
ENG3 PVT LEFTHAND FPD 4104		8/29	<b>Peter McElvaney</b>	4	<b>E-8</b>	<b>0700-2100</b>	<b>Orleans Spike</b>		
ENG3 SOUTH METRO FIRE 20		8/29	<b>Jeremy Rath</b>	4	<b>E-92</b>	<b>0700-2100</b>	<b>Orleans Spike</b>		
ENG3 PRO TEMPS 119		9/6	<b>Byron Long</b>	3	<b>E-115</b>	<b>0700-2100</b>	<b>Orleans Spike</b>		
ENG4 E1302		9/1	<b>Tylor Nofez</b>	4	<b>E-6</b>	<b>0700-2100</b>	<b>Orleans Spike</b>		
ENG4 SUNDANCE FIRE E-19		9/3	<b>Philip Long</b>	3	<b>E-19</b>	<b>0700-2100</b>	<b>Orleans Spike</b>		
ENG4 SUNDANCE FIRE E-25		9/3	<b>Matt Abbe</b>	3	<b>E-25</b>	<b>0700-2100</b>	<b>Orleans Spike</b>		
ENG4 PACIFIC HABITAT		9/3	<b>Jake Williams</b>	3	<b>E-93</b>	<b>0700-2100</b>	<b>Orleans Spike</b>		
ENG5 UTTING CONSTRUCTION		9/4	<b>Tyler Nelson</b>	3	<b>E-18</b>	<b>0700-2100</b>	<b>Orleans Spike</b>		
ENG5 GLOBAL WILDFIRE E-27		9/4	<b>Logan Malone</b>	3	<b>E-27</b>	<b>0700-2100</b>	<b>Orleans Spike</b>		
ENG5 GLOBAL WILDFIRE E-28		9/4	<b>Brad Touissant</b>	3	<b>E-28</b>	<b>0700-2100</b>	<b>Orleans Spike</b>		
ENG5 ELKO CO FIRE E-132		9/4	<b>Teren Mitton</b>	4	<b>E-132</b>	<b>0700-2100</b>	<b>Orleans Spike</b>		
ENG5 ELKO CO FIRE E-133		9/4	<b>Carter Alvarado</b>	4	<b>E-133</b>	<b>0700-2100</b>	<b>Orleans Spike</b>		
ENG5 PACIFIC OASIS		9/4	<b>Wes Dodds</b>	3	<b>E-134</b>	<b>0700-2100</b>	<b>Orleans Spike</b>		
<b>6. Work Assignments:</b>									
Prepare the 12N12 road north from the fires edge to DP21 for indirect firing strategies to secure the indirect control line.									
Secure the 12N12 road to limit eastern fire progression.									
Secure control lines and the Cedar Camp Road to limit southern fire progression.									
Construct indirect control lines from Cedar Camp Rd to the west to Bluff Creek to limit southern fire progression.									
<b>7. Special Instructions:</b>									
Coordinate with READs to validate control line locations prior to implementation.									
Do not use community hydrants unless there is fire impact to values at risk. Utilize drafting as primary water source.									
Casy Hague (REAF), Kevin Colegrove (REAF), Eric Blake (READ), Heather Rickard (CULS), Amber Bishop (REAF), Jason Nez (ARCH), Sarah Brey (READ(t)), Tim Breen (READ), Roy Sutcliff (READ(t)), Roy Ammon (CULS), and Caw Tep Silvia (REAF) are working across Div M, Div N and Div L									
<b>8. Communications</b>									
Name	Ch	Function	Rx Freq	Rx Tone	Tx Freq	Tx Tone	Mode	Notes	
NIFC C44	2	COMMAND	170.7625	(T7) 167.9	165.6250	(T7) 167.9	A	Tone 7	
VFIRE 24	8	TACTICAL	154.2725	(T6) 156.7	154.2725	(T6) 156.7	A	Tone 6	
A/G CMD	12	TACTICAL	167.8125		167.8125		A		
A/G TAC	13	TACTICAL	172.5500		172.5500		A		
CALCORD	15	TACTICAL	156.0750	(T6) 156.7	156.0750	(T6) 156.7	A	MEDICAL A/G	
AIR GUARD	16		168.6250		168.6250	(T1) 110.9	A		
<b>9. Prepared by: Name:</b>									
Jeff Ferguson, Jay Shaffer, Alyssa Thornburg(t)				RESL		Signature: _____			
<b>ICS 204</b>		Date/Time: 8/26/2023 2200		Personnel Count: 144					



# ASSIGNMENT LIST (ICS 204 WF)

CONTROLLED UNCLASSIFIED  
INFORMATION//BASIC

<b>1. Incident Name:</b>		<b>2. Operational Period:</b>				<b>3. Branch</b>		<b>Division</b>	
<b>2023 SRF Lightning Complex</b>		Date From: 08/27/23	Date To: 08/28/23			<b>XX</b>		<b>M</b>	
		Time From: 0700	Time To: 0700			Page 2 of 3		Mike	
<b>4. Operations Personnel:</b>									
Operations Section Chief: <b>Patrick Russell, Travis Thane(t)</b>					Night Ops:				
Branch Director: <b>Ian Morgan, Nathan Arellano (t)</b>					Branch Safety: <b>Taylor Fernsten</b>				
Division/Group Supervisor: <b>Brian Brennan, Mike Gawronski (t)</b>					Air Attack:				
<b>5. Resources Assigned:</b>									
<b>**RESOURCES IN BOLD ARE 12HR, UNBOLDED ARE 24HR**</b>									
Resource Identifier	ALS	LWD	Leader	Personnel	Request #	Hours	Reporting Location		
<b>ENG6 NV-NLT BRUSH 16</b>		<b>8/29</b>	<b>Kyle Neckels</b>	<b>5</b>	<b>E-1</b>	<b>0700-2100</b>	<b>Orleans Spike</b>		
<b>ENG6 YUOK 9462</b>		<b>8/28</b>	<b>Talbert Alvarado</b>	<b>4</b>	<b>E-2</b>	<b>0700-2100</b>	<b>Orleans Spike</b>		
<b>ENG6 THUNDER MOUNTAIN</b>		<b>9/5</b>	<b>Jeremiah Millier</b>	<b>3</b>	<b>E-116</b>	<b>0700-2100</b>	<b>Orleans Spike</b>		
<b>ENG6 AAA THUNDERBOLT FIRE</b>		<b>9/5</b>	<b>James Grant</b>	<b>3</b>	<b>E-146</b>	<b>0700-2100</b>	<b>Orleans Spike</b>		
<b>ENG6 J3 CONTRACTING E-156</b>			<b>Curtis Pumphrey</b>	<b>3</b>	<b>E-156</b>	<b>0700-2100</b>	<b>Orleans Spike</b>		
<b>DOZ2 LET-ER-BUCK</b>		<b>8/29</b>	<b>Mike Baker</b>	<b>2</b>	<b>E-1</b>	<b>0700-2100</b>	<b>Orleans Spike</b>		
<b>DOZ3 KIT</b>		<b>8/31</b>	<b>Braydon Tomlinson</b>	<b>2</b>	<b>E-35</b>	<b>0700-2100</b>	<b>Orleans Spike</b>		
<b>MAST NORTH STATE EQUIP</b>		<b>9/4</b>	<b>Michael Bridwell</b>	<b>2</b>	<b>E-9</b>	<b>0700-2100</b>	<b>Orleans Spike</b>		
<b>MAST LEPAGE</b>		<b>9/5</b>	<b>Nathan Richards</b>	<b>2</b>	<b>E-11</b>	<b>0700-2100</b>	<b>Orleans Spike</b>		
<b>MAST LESLIE HEAVY HAUL</b>		<b>9/8</b>	<b>Dwane Taylor</b>	<b>2</b>	<b>E-178</b>	<b>0700-2100</b>	<b>Orleans Spike</b>		
<b>MAST EVANS ROW E-180</b>			<b>Aristeo Gonzalez</b>	<b>2</b>	<b>E-180</b>	<b>0700-2100</b>	<b>Orleans Spike</b>		
<b>MAST EVANS ROW E-181</b>			<b>Chuck Layton</b>	<b>2</b>	<b>E-181</b>	<b>0700-2100</b>	<b>Orleans Spike</b>		
<b>MAST LASSEN MASTICATOR</b>		<b>9/5</b>	<b>TJ Chrisman</b>	<b>2</b>	<b>E-230</b>	<b>0700-2100</b>	<b>Orleans Spike</b>		
<b>MAST HOOPA FIRE</b>			<b>Whits Marshall</b>	<b>2</b>	<b>E-285</b>	<b>0700-2100</b>	<b>Orleans Spike</b>		
<b>WT2 ZABEL</b>		<b>8/28</b>	<b>Frank Zabel</b>	<b>1</b>	<b>E-12</b>	<b>0700-2100</b>	<b>Orleans Spike</b>		
<b>WT2 DARRAH LOGGING E-16</b>			<b>Dave Kaundart</b>	<b>1</b>	<b>E-16</b>	<b>0700-2100</b>	<b>Orleans Spike</b>		
<b>WT2 DARRAH LOGGING E-17</b>		<b>8/31</b>	<b>Tom Waterman</b>	<b>1</b>	<b>E-17</b>	<b>0700-2100</b>	<b>Orleans Spike</b>		
<b>WT2 PVT E-18</b>			<b>Daniel Cook</b>	<b>1</b>	<b>E-18</b>	<b>0700-2100</b>	<b>Orleans Spike</b>		
<b>6. Work Assignments:</b>									
Prepare the 12N12 road north from the fires edge to DP21 for indirect firing strategies to secure the indirect control line.									
Secure the 12N12 road to limit eastern fire progression.									
Secure control lines and the Cedar Camp Road to limit southern fire progression.									
Construct indirect control lines from Cedar Camp Rd to the west to Bluff Creek to limit southern fire progression.									
<b>7. Special Instructions:</b>									
Coordinate with READs to validate control line locations prior to implementation.									
Do not use community hydrants unless there is fire impact to values at risk. Utilize drafting as primary water source.									
Casy Hague (REAF), Kevin Colegrove (REAF), Eric Blake (READ), Heather Rickard (CULS), Amber Bishop (REAF), Jason Nez (ARCH), Sarah Brey (READ(t)), Tim Breen (READ), Roy Sutcliff (READ(t)), Roy Ammon (CULS), and Caw Tep Silvia (REAF) are working across Div M, Div N and Div L									
<b>8. Communications</b>									
Name	Ch	Function	Rx Freq	Rx Tone	Tx Freq	Tx Tone	Mode	Notes	
NIFC C44	2	COMMAND	170.7625	(T7) 167.9	165.6250	(T7) 167.9	A	Tone 7	
VFIRE 24	8	TACTICAL	154.2725	(T6) 156.7	154.2725	(T6) 156.7	A	Tone 6	
A/G CMD	12	TACTICAL	167.8125		167.8125		A		
A/G TAC	13	TACTICAL	172.5500		172.5500		A		
CALCORD	15	TACTICAL	156.0750	(T6) 156.7	156.0750	(T6) 156.7	A	MEDICAL A/G	
AIR GUARD	16		168.6250		168.6250	(T1) 110.9	A		
<b>9. Prepared by: Name:</b>									
Jeff Ferguson, Jay Shaffer, Alyssa Thornburg(t)					RESL				
Signature: _____									
<b>ICS 204</b>		Date/Time: 8/26/2023 2200			Personnel Count: 40				

# ASSIGNMENT LIST (ICS 204 WF)

CONTROLLED UNCLASSIFIED  
INFORMATION//BASIC

<b>1. Incident Name:</b> <b>2023 SRF Lightning Complex</b>		<b>2. Operational Period:</b> Date From: 08/27/23    Date To: 08/28/23 Time From: 0700    Time To: 0700				<b>3. Branch</b> <b>XX</b>		<b>Division</b> <b>M</b>	
<b>4. Operations Personnel:</b>						Page 3 of 3		Mike	
Operations Section Chief: <b>Patrick Russell, Travis Thane(t)</b>				Night Ops:					
Branch Director: <b>Ian Morgan, Nathan Arellano (t)</b>				Branch Safety: <b>Taylor Fernsten</b>					
Division/Group Supervisor: <b>Brian Brennan, Mike Gawronski (t)</b>				Air Attack:					
<b>5. Resources Assigned:</b>		<b>**RESOURCES IN BOLD ARE 12HR, UNBOLDED ARE 24HR**</b>							
Resource Identifier	ALS	LWD	Leader	Personnel	Request #	Hours	Reporting Location		
<b>TFLD KIRKMAN</b>		<b>8/28</b>	<b>Brian Kirkman</b>	<b>1</b>		<b>0700-2100</b>	<b>Orleans Spike</b>		
<b>TFLD FISHER</b>			<b>Isiah Fisher</b>	<b>1</b>		<b>0700-2100</b>	<b>Orleans Spike</b>		
<b>HEQB LOZANO</b>			<b>Steven Lozano</b>	<b>1</b>		<b>0700-2100</b>	<b>Orleans Spike</b>		
<b>FMOD MOEN</b>		<b>9/6</b>	<b>Gary Balmain</b>	<b>2</b>	<b>O-236</b>	<b>0700-2100</b>	<b>Orleans Spike</b>		
<b>FMOD A &amp; F FALLERS</b>			<b>Jesse Aousa</b>	<b>2</b>	<b>O-240</b>	<b>0700-2100</b>	<b>Orleans Spike</b>		
<b>FMOD SWEDBERG CONTRACTING</b>			<b>Gary Schaffer</b>	<b>2</b>	<b>O-241</b>	<b>0700-2100</b>	<b>Orleans Spike</b>		
<b>FELB O'CONNOR</b>		<b>8/28</b>	<b>Morgan O'Connor</b>	<b>1</b>		<b>0700-2100</b>	<b>Orleans Spike</b>		
<b>STEQ FENWICK</b>			<b>Maria Fenwick</b>	<b>1</b>	<b>O-34</b>	<b>0700-2100</b>	<b>Orleans Spike</b>		
<b>REMS HPC REMS</b>			<b>David LaPearl</b>	<b>4</b>	<b>O-264</b>	<b>0700-2100</b>	<b>Orleans Spike</b>		
<b>EMPF COLEY</b>			<b>Mike Coley</b>	<b>1</b>	<b>O-194</b>	<b>0700-2100</b>	<b>Orleans Spike</b>		
<b>EMPF WATSON (t)</b>			<b>Ryan Watson</b>	<b>1</b>	<b>O-187</b>	<b>0700-2100</b>	<b>Orleans Spike</b>		
<b>6. Work Assignments:</b>									
Prepare the 12N12 road north from the fires edge to DP21 for indirect firing strategies to secure the indirect control line.									
Secure the 12N12 road to limit eastern fire progression.									
Secure control lines and the Cedar Camp Road to limit southern fire progression.									
Construct indirect control lines from Cedar Camp Rd to the west to Bluff Creek to limit southern fire progression.									
<b>7. Special Instructions:</b>									
Coordinate with READs to validate control line locations prior to implementation.									
Do not use community hydrants unless there is fire impact to values at risk. Utilize drafting as primary water source.									
Casy Hague (REAF), Kevin Colegrove (REAF), Eric Blake (READ), Heather Rickard (CULS), Amber Bishop (REAF), Jason Nez (ARCH), Sarah Brey (READ(t)), Tim Breen (READ), Roy Sutcliff (READ(t)), Roy Ammon (CULS), and Caw Tep Silvia (REAF) are working across Div M, Div N and Div LN.									
<b>8. Communications</b>									
Name	Ch	Function	Rx Freq	Rx Tone	Tx Freq	Tx Tone	Mode	Notes	
NIFC C44	2	COMMAND	170.7625	(T7) 167.9	165.6250	(T7) 167.9	A	Tone 7	
VFIRE 24	8	TACTICAL	154.2725	(T6) 156.7	154.2725	(T6) 156.7	A	Tone 6	
A/G CMD	12	TACTICAL	167.8125		167.8125		A		
A/G TAC	13	TACTICAL	172.5500		172.5500		A		
CALCORD	15	TACTICAL	156.0750	(T6) 156.7	156.0750	(T6) 156.7	A	MEDICAL A/G	
AIR GUARD	16		168.6250		168.6250	(T1) 110.9	A		
<b>9. Prepared by: Name:</b>			Jeff Ferguson, Jay Shaffer, Alyssa Thornburg(t)		RESL		Signature: _____		
<b>ICS 204</b>		Date/Time: 8/26/2023 2200			Personnel Count: 17				



# ASSIGNMENT LIST (ICS 204 WF)

CONTROLLED UNCLASSIFIED  
INFORMATION//BASIC

<b>1. Incident Name:</b>		<b>2. Operational Period:</b>				<b>3. Branch</b>		<b>Division</b>	
<b>2023 SRF Lightning Complex</b>		Date From: 08/27/23	Date To: 08/28/23	Time From: 0700	Time To: 0700	<b>XX</b>		<b>N</b>	
<b>4. Operations Personnel:</b>						Page 1 of 2		November	
Operations Section Chief: <b>Patrick Russell, Travis Thane(t)</b>				Night Ops:					
Branch Director: <b>Ian Morgan, Nathan Arellano (t)</b>				Branch Safety: <b>Taylor Fernsten</b>					
Division/Group Supervisor: <b>Brendon Banwell, Geoffrey Phelan (t)</b>				Air Attack:					
<b>5. Resources Assigned:</b>		<b>**RESOURCES IN BOLD ARE 12HR, UNBOLDED ARE 24HR**</b>							
Resource Identifier	ALS	LWD	Leader	Personnel	Request #	Hours	Reporting Location		
HC2 FRANCO AFS FORSTRY C-8			<b>Jorge Amezcquta</b>	20	<b>C-8</b>	<b>0700-2100</b>	<b>Orleans Spike</b>		
HC2IA FRANCO		9/5	<b>Jose Mora</b>	20	<b>C-36</b>	<b>0700-2100</b>	<b>Orleans Spike</b>		
HC2 CABRERA CONTRACTING		9/5	<b>Rafael Cabrera</b>	20	<b>C-39</b>	<b>0700-2100</b>	<b>Orleans Spike</b>		
HC2 IMPERIAL		9/6	<b>Alvaro Gonzalez</b>	20	<b>C-42</b>	<b>0700-2100</b>	<b>Orleans Spike</b>		
HC2 MOUNTAINEER CONTRACTING		9/4	<b>Javier Ramos</b>	20	<b>C-7</b>	<b>0700-2100</b>	<b>Orleans Spike</b>		
WFM SIX RIVERS		9/4	<b>Ben Peterson</b>	16	<b>O-255</b>	<b>0700-2100</b>	<b>Orleans Spike</b>		
TF 7102		9/5	<b>Desmond Pellum</b>	13	<b>E-199</b>	<b>0700-2100</b>	<b>Orleans Spike</b>		
ENG3 WEST METRO 9		8/28	<b>Travis Griffin</b>	4	<b>E-139</b>	<b>0700-2100</b>	<b>Orleans Spike</b>		
ENG3 PLATTE CANYON 33		8/28	<b>Devon Macdonald</b>	4	<b>E-141</b>	<b>0700-2100</b>	<b>Orleans Spike</b>		
ENG3 CA MDF 335		9/5	<b>Tristan Wood</b>	5	<b>E-147</b>	<b>0700-2100</b>	<b>Orleans Spike</b>		
ENG3 INF 323		9/4	<b>Oliver Litchfield</b>	5	<b>E-148</b>	<b>0700-2100</b>	<b>Orleans Spike</b>		
ENG YUOK E-9434		8/29	<b>Fermin Sanchez</b>	5		<b>0700-2100</b>	<b>Orleans Spike</b>		
ENG6 FLASHOVER LLC		9/4	<b>Travis Grunenfelder</b>	3	<b>E-24</b>	<b>0700-2100</b>	<b>Orleans Spike</b>		
ENG6 LITE EM UP 275			<b>Jenie Evans</b>	3	<b>E-105</b>	<b>0700-2100</b>	<b>Orleans Spike</b>		
ENG6 ROARING FORK		8/29	<b>Maureen McPhee</b>	3	<b>E-138</b>	<b>0700-2100</b>	<b>Orleans Spike</b>		
ENG6 BIRD DOG FIRE		9/5	<b>Jon Keyton</b>	3	<b>E-143</b>	<b>0700-2100</b>	<b>Orleans Spike</b>		
ENG6 USWFS 1611			<b>Lucas Stringfield</b>	3	<b>E-174</b>	<b>0700-2100</b>	<b>Orleans Spike</b>		
DOZ2 JIM SHERER TRUCKING		9/2	<b>Sean Sherer</b>	4	<b>E-8</b>	<b>0700-2100</b>	<b>Orleans Spike</b>		
<b>6. Work Assignments:</b>									
Construct indirect control lines north along the 13N01 road to DP40 to limit western and northern fire progression.									
Secure the control line along the 13N01 road to limit western fire progression.									
Construct direct and indirect control lines from DP41 to the east to Bluff Creek to limit southern fire progression.									
<b>7. Special Instructions:</b>									
Do not use community hydrants unless there is fire impact to values at risk. Utilize drafting as primary water source.									
Casy Hague (REAF), Kevin Colegrove (REAF), Eric Blake (READ), Heather Rickard (CULS), Amber Bishop (REAF), Jason Nez (ARCH), Sarah Brey (READ(t), Tim Breen (READ), Roy Sutcliff (READ(t), Roy Ammon (CULS), and Caw Tep Silvia (REAF) are working across Div M, Div N and Div L									
<b>8. Communications</b>									
Name	Ch	Function	Rx Freq	Rx Tone	Tx Freq	Tx Tone	Mode	Notes	
NIFC C44	2	COMMAND	170.7625	(T7) 167.9	165.6250	(T7) 167.9	A	Tone 7	
VTAC12	11	TACTICAL	154.4525	(T6) 156.7	154.4525	(T6) 156.7	A	Tone 6	
A/G CMD	12	TACTICAL	167.8125		167.8125		A		
A/G TAC	13	TACTICAL	172.5500		172.5500		A		
CALCORD	15	TACTICAL	156.0750	(T6) 156.7	156.0750	(T6) 156.7	A	MEDICAL A/G	
AIR GUARD	16		168.6250		168.6250	(T1) 110.9	A		
<b>9. Prepared by: Name:</b>		Jeff Ferguson, Jay Shaffer, Alyssa Thornburg(t)			RESL		Signature: _____		
<b>ICS 204</b>		Date/Time: 8/26/2023 2200			Personnel Count: 171				

# ASSIGNMENT LIST (ICS 204 WF)

CONTROLLED UNCLASSIFIED  
INFORMATION//BASIC

<b>1. Incident Name:</b> <b>2023 SRF Lightning Complex</b>	<b>2. Operational Period:</b> Date From: 08/27/23    Date To: 08/28/23 Time From: 0700    Time To: 0700	<b>3. Branch</b> <b>Division</b> <b>XX</b> <b>N</b> <b>Page 2 of 2</b> <b>November</b>
---	---	--

<b>4. Operations Personnel:</b>	
Operations Section Chief: <b>Patrick Russell, Travis Thane(t)</b>	Night Ops:
Branch Director: <b>Ian Morgan, Nathan Arellano (t)</b>	Branch Safety: <b>Taylor Fernsten</b>
Division/Group Supervisor: <b>Brendon Banwell, Geoffrey Phelan (t)</b>	Air Attack:

<b>5. Resources Assigned:</b>		<b>**RESOURCES IN BOLD ARE 12HR, UNBOLDED ARE 24HR**</b>					
Resource Identifier	ALS	LWD	Leader	Personnel	Request #	Hours	Reporting Location
<b>DOZ2 LA RUE DOZER</b>		<b>9/5</b>	<b>Dan LaRue</b>	<b>2</b>	<b>E-129</b>	<b>0700-2100</b>	<b>Orleans Spike</b>
<b>DOZ2 STONY CREEK</b>		<b>9/6</b>	<b>Ken Cook</b>	<b>2</b>	<b>E-130</b>	<b>0700-2100</b>	<b>Orleans Spike</b>
<b>MAST GRAM</b>		<b>9/8</b>	<b>Don Andrews</b>	<b>2</b>	<b>E-176</b>	<b>0700-2100</b>	<b>Orleans Spike</b>
<b>MAST TOUGH CO</b>			<b>Brandon Elbay</b>	<b>2</b>	<b>E-231</b>	<b>0700-2100</b>	<b>Orleans Spike</b>
<b>WTT2 USFS ANF 225</b>		<b>8/31</b>	<b>Aaron Unkovich</b>	<b>1</b>	<b>E-122</b>	<b>0700-2100</b>	<b>Orleans Spike</b>
<b>WT2 SQF 221</b>		<b>9/4</b>	<b>Cole William</b>	<b>2</b>	<b>E-127</b>	<b>0700-2100</b>	<b>Orleans Spike</b>
<b>FMOD LIBERTY LUMBERJACK</b>		<b>9/3</b>	<b>Jeff Baker</b>	<b>2</b>	<b>O-50</b>	<b>0700-2100</b>	<b>Orleans Spike</b>
<b>FMOB SWEDBERG</b>		<b>9/8</b>	<b>Jason Bishop</b>	<b>2</b>	<b>O-238</b>	<b>0700-2100</b>	<b>Orleans Spike</b>
<b>FMOB TIMBER TIPPERS</b>		<b>9/8</b>	<b>Michael Williams</b>	<b>2</b>	<b>O-312</b>	<b>0700-2100</b>	<b>Orleans Spike</b>
<b>HEQB OOSAHWE</b>		<b>9/6</b>	<b>Phil Oosahwe</b>	<b>1</b>	<b>O-229</b>	<b>0700-2100</b>	<b>Orleans Spike</b>
<b>HEQB FARNSWORTH</b>		<b>9/3</b>	<b>Joe Farnsworth</b>	<b>1</b>	<b>O-275</b>	<b>0700-2100</b>	<b>Orleans Spike</b>
<b>EMPF TOYOTA</b>		<b>9/5</b>	<b>Yosh Toyota</b>	<b>1</b>	<b>O-190</b>	<b>0700-2100</b>	<b>Orleans Spike</b>
<b>EMTF REAVES (t)</b>		<b>9/5</b>	<b>Forrest Reaves</b>	<b>1</b>	<b>O-215</b>	<b>0700-2100</b>	<b>Orleans Spike</b>

**6. Work Assignments:**  
 Construct indirect control lines north along the 13N01 road to DP40 to limit western and northern fire progression.  
 Secure the control line along the 13N01 road to limit western fire progression.  
 Construct direct and indirect control lines from DP41 to the east to Bluff Creek to limit southern fire progression.

**7. Special Instructions:**  
 Do not use community hydrants unless there is fire impact to values at risk. Utilize drafting as primary water source.  
 Casy Hague (REAF), Kevin Colegrove (REAF), Eric Blake (READ), Heather Rickard (CULS), Amber Bishop (REAF), Jason Nez (ARCH), Sarah Brey (READ(t), Tim Breen (READ), Roy Sutcliff (READ(t), Roy Ammon (CULS), and Caw Tep Silvia (REAF) are working across Div M, Div N and Div L  
 Tim Quigley SOFR is working across Branch XX

**8. Communications**

Name	Ch	Function	Rx Freq	Rx Tone	Tx Freq	Tx Tone	Mode	Notes
NIFC C44	2	COMMAND	170.7625	(T7) 167.9	165.6250	(T7) 167.9	A	Tone 7
VTAC12	11	TACTICAL	154.4525	(T6) 156.7	154.4525	(T6) 156.7	A	Tone 6
A/G CMD	12	TACTICAL	167.8125		167.8125		A	
A/G TAC	13	TACTICAL	172.5500		172.5500		A	
CALCORD	15	TACTICAL	156.0750	(T6) 156.7	156.0750	(T6) 156.7	A	MEDICAL A/G
AIR GUARD	16		168.6250		168.6250	(T1) 110.9	A	

**9. Prepared by: Name:** Jeff Ferguson, Jay Shaffer, Alyssa Thornburg(t)    RESL    Signature: \_\_\_\_\_  
**ICS 204**    Date/Time: 8/26/2023 2200    Personnel Count: 21



# ASSIGNMENT LIST (ICS 204 WF)

CONTROLLED UNCLASSIFIED  
INFORMATION//BASIC

<b>1. Incident Name:</b> <b>2023 SRF Lightning Complex</b>		<b>2. Operational Period:</b> Date From: 08/27/23    Date To: 08/28/23 Time From: 0700    Time To: 0700				<b>3. Branch</b> <b>XL</b>		<b>Division</b> <b>AA</b>	
<b>4. Operations Personnel:</b>						Page 1 of 1		Alpha-Alpha	
Operations Section Chief: <b>Patrick Russell, Travis Thane(t)</b>		Branch Director: <b>Jake Akerberg, Lief Mathiesen, Jason Dyer</b>		Division/Group Supervisor: <b>Joe Walton</b>		Night Ops:		Branch Safety: <b>Doug McKelvey</b>	
						Air Attack:			
<b>5. Resources Assigned:</b>			<b>**RESOURCES IN BOLD ARE 12HR, UNBOLDED ARE 24HR**</b>						
Resource Identifier	ALS	LWD	Leader	Personnel	Request #	Hours	Reporting Location		
<b>WFM KILEWEIA</b>			<b>Web</b>	7		<b>0700-2100</b>	<b>Orick Rodeo Grnds</b>		
S/T AEU 9275G			Siliro			0700-0700	Orick Rodeo Grnds		
ENG S/T 9257G			Ed Smith	34		0700-0700	Orick Rodeo Grnds		
S/T MEU 9111C			Scott Davis	16	C-3	0700-0700	Orick Rodeo Grnds		
WTS2 RIO 7157			Joseph Sancho	2		0700-0700	Orick Rodeo Grnds		
WTS2 ARF 8258				2		0700-0700	Orick Rodeo Grnds		
<b>WTS2 PVT DARRAH 323</b>			<b>Carl Walker</b>	1	<b>E-26</b>	<b>0700-2100</b>	<b>Orick Rodeo Grnds</b>		
<b>WT1 5J WATER SERV</b>			<b>Bryan Jackson</b>		<b>E-15</b>	<b>0700-2100</b>	<b>Orick Rodeo Grnds</b>		
<b>WTS2 RIO 7157 (NIGHT)</b>				2		<b>2100-0700</b>	<b>Orick Rodeo Grnds</b>		
<b>CHIP PVT G AND C</b>			<b>Alex Knott</b>	3	<b>e-12</b>	<b>0700-2100</b>	<b>Orick Rodeo Grnds</b>		
<b>READ KINSMAN</b>			<b>Samantha Kinsman</b>	1		<b>0700-2100</b>	<b>Orick Rodeo Grnds</b>		
<b>READ HARMAN</b>			<b>Andy Harman</b>	1		<b>0700-2100</b>	<b>Orick Rodeo Grnds</b>		
EMPF FUGATE			Adam Fugate	1	O-188	0700-0700	Orick Rodeo Grnds		
EMPF SELLERS			Patrick Sellers	1	O-85	0700-0700	Orick Rodeo Grnds		
REMS MONTEREY		8/31	Robert Klemek	4	O-61	0700-0700	Orick Rodeo Grnds		
<b>6. Work Assignments:</b>									
Secure Holter Ridge Road from the AA/ZZ break north to the 121 road limit eastern fire progression.									
Secure direct line from the 121 road, towards Lost Man Creek, to the fires edge to limit northern fire progression.									
Scout for direct and indirect control line opportunities in Lost Man Creek to limit the fire progression to the west.									
<b>7. Special Instructions:</b>									
Keep the fire footprint as small as possible to reduce impacts to private lands and Old Growth Forest within the park.									
Coordinate with cooperating agencies to ensure control lines established meet incident needs.									
READ Emma McClure, ARCH David Neiss, Alex Leigh will be working across Branch XL									
<b>8. Communications</b>									
Name	Ch	Function	Rx Freq	Rx Tone	Tx Freq	Tx Tone	Mode	Notes	
NIFC C45	3	COMMAND	173.0875	(T7) 167.9	162.8125	(T7) 167.9	A	Tone 7	
NIFC C54	4	COMMAND	173.9250	(T7) 167.9	170.5625	(T7) 167.9	A	Tone 7	
VTAC12	11	TACTICAL	154.4525	(T6) 156.7	154.4525	(T6) 156.7	A	Tone 6	
A/G CMD	12	TACTICAL	167.8125		167.8125		A		
A/G TAC	13	TACTICAL	172.5500		172.5500		A		
CALCORD	15	TACTICAL	156.0750	(T6) 156.7	156.0750	(T6) 156.7	A	MEDICAL A/G	
AIR GUARD	16		168.6250		168.6250	(T1) 110.9	A		
<b>9. Prepared by: Name:</b>			Jeff Ferguson, Jay Shaffer, Alyssa Thornburg(t)		RESL		Signature: _____		
<b>ICS 204</b>		Date/Time: 8/26/2023 2200		Personnel Count: 75					

# ASSIGNMENT LIST (ICS 204 WF)

CONTROLLED UNCLASSIFIED  
INFORMATION//BASIC

<b>1. Incident Name:</b>	<b>2. Operational Period:</b>	<b>3. Branch</b>	<b>Division</b>
<b>2023 SRF Lightning Complex</b>	Date From: 08/27/23      Date To: 08/28/23 Time From: 0700      Time To: 0700	<b>XL</b>	<b>ZZ</b>
<b>4. Operations Personnel:</b>		Page 1 of 1	Zulu-Zulu

Operations Section Chief: <b>Patrick Russell, Travis Thane(t)</b>	Night Ops:
Branch Director: <b>Jake Akerberg, Lief Mathiesen, Jason Dyer</b>	Branch Safety: <b>Doug McKelvey</b>
Division/Group Supervisor: <b>Mason Gorham</b>	Air Attack:

5. Resources Assigned:      **RESOURCES IN BOLD ARE 12HR, UNBOLDED ARE 24HR**							
Resource Identifier	ALS	LWD	Leader	Personnel	Request #	Hours	Reporting Location
<b>YOSEMITE WFM</b>		8/31	<b>John O-Ocoy</b>	9	<b>O-1</b>	<b>0700-2100</b>	<b>Orick Rodeo Grnds</b>
S/T HUU 9126G			John Altmarino	33	C-35	0700-0700	Orick Rodeo Grnds
S/T SCU 9161C			Dave Thermer	20	E-12	0700-0700	Orick Rodeo Grnds
<b>WTS1 PVT HAWLING A</b>			<b>Dan Ramirez</b>	1	<b>E-3</b>	<b>0700-2100</b>	<b>Orick Rodeo Grnds</b>
<b>FORESTER 1290</b>			<b>Joseph Fazio</b>	1	<b>O-29</b>	<b>0700-2100</b>	<b>Orick Rodeo Grnds</b>
<b>FORESTER 1299</b>			<b>Noah Coonen</b>	1	<b>O-30</b>	<b>0700-1900</b>	<b>Orick Rodeo Grnds</b>
<b>READ GOFF</b>			<b>Gabe Goff</b>	1		<b>0700-1900</b>	<b>Orick Rodeo Grnds</b>
<b>EMPF HORVATH (NIGHT)</b>			<b>Josh Horvath</b>	1	<b>O-88</b>	<b>2100-0700</b>	<b>Orick Rodeo Grnds</b>
<b>EMPF (t) BARKER (NIGHT)</b>			<b>Adam Barker</b>	1	<b>O-87</b>	<b>2100-0700</b>	<b>Orick Rodeo Grnds</b>

**6. Work Assignments:**  
 Secure Holter Ridge Road from the AA/ZZ break south to the 131 road to limit eastern fire progression.  
 Secure the 131 road to Lost Man Creek to the fires edge to limit southern fire progression.  
 Secure and mop up along the 141-road to limit southern fire progression.  
 Scout for direct and indirect control line opportunities in Lost Man Creek to limit the fire progression to the west.

**7. Special Instructions:**  
 Keep the fire footprint as small as possible to reduce impacts to private lands and Old Growth Forest within the park.  
 Coordinate with cooperating agencies to ensure control lines established meet incident needs.  
 READ Emma McClure, ARCH David Neiss, Alex Leigh will be working across Branch XL

**8. Communications**

Name	Ch	Function	Rx Freq	Rx Tone	Tx Freq	Tx Tone	Mode	Notes
NIFC C45	3	COMMAND	173.0875	(T7) 167.9	162.8125	(T7) 167.9	A	Tone 7
NIFC C54	4	COMMAND	173.9250	(T7) 167.9	170.5625	(T7) 167.9	A	Tone 7
VFIRE 24	8	TACTICAL	154.2725	(T6) 156.7	154.2725	(T6) 156.7	A	Tone 6
A/G CMD	12	TACTICAL	167.8125		167.8125		A	
A/G TAC	13	TACTICAL	172.5500		172.5500		A	
CALCORD	15	TACTICAL	156.0750	(T6) 156.7	156.0750	(T6) 156.7	A	MEDICAL A/G
AIR GUARD	16		168.6250		168.6250	(T1) 110.9	A	

**9. Prepared by: Name:** Jeff Ferguson, Jay Shaffer, Alyssa Thornburg(t)      RESL      Signature: \_\_\_\_\_

**ICS 204**      Date/Time: 8/26/2023 2200      Personnel Count: 68



# ASSIGNMENT LIST (ICS 204 WF)

CONTROLLED UNCLASSIFIED  
INFORMATION//BASIC

<b>1. Incident Name:</b> <b>2023 SRF Lightning Complex</b>		<b>2. Operational Period:</b> Date From: 08/27/23    Date To: 08/28/23 Time From: 0700    Time To: 0700				<b>3. Branch</b> <b>XL</b>		<b>Division</b> <b>CC/DD/GG</b>	
<b>4. Operations Personnel:</b>						Page 1 of 1			
Operations Section Chief: <b>Patrick Russell, Travis Thane(t)</b>				Night Ops:					
Branch Director: <b>Jake Akerberg, Lief Mathiesen, Jason Dyer</b>				Branch Safety: <b>Doug McKelvey</b>					
Division/Group Supervisor: <b>Russ Mitchell, Bryan Boatman(t)</b>				Air Attack:					
<b>5. Resources Assigned:</b>		<b>**RESOURCES IN BOLD ARE 12HR, UNBOLDED ARE 24HR**</b>							
Resource Identifier	ALS	LWD	Leader	Personnel	Request #	Hours	Reporting Location		
<b>WFM OLYMPIC</b>		<b>8/31</b>	<b>Jasper Peach</b>	12	<b>O-2</b>	<b>0700-2100</b>	<b>Orick Rodeo Grnds</b>		
<b>WFM KILEWEIA</b>			<b>Web</b>	7		<b>0700-2100</b>	<b>Orick Rodeo Grnds</b>		
<b>HC2IA UKONOM</b>		<b>8/29</b>	<b>Brian Janes</b>	20	<b>C-4</b>	<b>0700-2100</b>	<b>Orick Rodeo Grnds</b>		
<b>HC2I FRANCO 3</b>		<b>9/5</b>	<b>Octavio Quevedo</b>	20	<b>C-41</b>	<b>0700-2100</b>	<b>Orick Rodeo Grnds</b>		
<b>ENG4 HIA 2043</b>		<b>8/30</b>	<b>Richard Yusie</b>	3	<b>E-2</b>	<b>0700-2100</b>	<b>Orick Rodeo Grnds</b>		
<b>ENG6 ID CTF 671</b>		<b>9/8</b>	<b>Dionicio Lopez</b>	5	<b>E-227</b>	<b>0700-2100</b>	<b>Orick Rodeo Grnds</b>		
<b>ENG6 SARATOGA SPRINGS</b>		<b>9/7</b>	<b>Taylor Olsen</b>	3	<b>E-224</b>	<b>0700-2100</b>	<b>Orick Rodeo Grnds</b>		
<b>ENG6 FIRE CO. 103</b>		<b>9/7</b>	<b>Chris Hanson</b>	3	<b>E-226</b>	<b>0700-2100</b>	<b>Orick Rodeo Grnds</b>		
<b>ENG6 PVT 9902</b>		<b>8/25</b>	<b>Stan Hankins</b>	3	<b>E-23</b>	<b>0700-2100</b>	<b>Orick Rodeo Grnds</b>		
<b>ENG4 PEANUT PIE 7</b>		<b>9/9</b>	<b>Michael Kern</b>	3	<b>E-29</b>	<b>0700-2100</b>	<b>Orick Rodeo Grnds</b>		
<b>WTS2 RIO 7157</b>			<b>Joseph Sancho</b>	2		<b>0700-2100</b>	<b>Orick Rodeo Grnds</b>		
<b>DOZ2 PVT JUNGWIRTH</b>		<b>9/2</b>	<b>Lary Perry</b>	2	<b>E-5</b>	<b>0700-2100</b>	<b>Orick Rodeo Grnds</b>		
<b>SKD2 PACIFIC RIDGE</b>		<b>9/8</b>	<b>Mark Tripp</b>	2	<b>E-17</b>	<b>0700-2100</b>	<b>Orick Rodeo Grnds</b>		
<b>FMOD CFFM2</b>		<b>9/9</b>	<b>Clay Ritts</b>	2	<b>O-11</b>	<b>0700-2100</b>	<b>Orick Rodeo Grnds</b>		
<b>EMPF HORVATH</b>			<b>Josh Horvath</b>	1	<b>O-88</b>	<b>0700-2100</b>	<b>Orick Rodeo Grnds</b>		
<b>EMPF (t) BARKER</b>			<b>Adam Barker</b>	1	<b>O-87</b>	<b>0700-2100</b>	<b>Orick Rodeo Grnds</b>		
<b>6. Work Assignments:</b>									
Secure the fire's edge in DIV CC to limit the fire progression and make escape improbable.									
Scout the area around DIV CC for opportunities to construct contingency lines.									
Patrol DIV DD and DIV GG and mitigate any concerns to ensure that escape is improbable.									
<b>7. Special Instructions:</b>									
Keep the fire footprint as small as possible to reduce impacts to private lands and Old Growth Forest within the park.									
Utilize pumps and sprinklers to minimize fire impact to old growth trees.									
READ Emma McClure, ARCH David Neiss, Alex Leigh will be working across Branch XL									
<b>8. Communications</b>									
Name	Ch	Function	Rx Freq	Rx Tone	Tx Freq	Tx Tone	Mode	Notes	
NIFC C45	3	COMMAND	173.0875	(T7) 167.9	162.8125	(T7) 167.9	A	Tone 7	
NIFC C54	4	COMMAND	173.9250	(T7) 167.9	170.5625	(T7) 167.9	A	Tone 7	
VFIRE 22	6	TACTICAL	154.2650	(T6) 156.7	154.2650	(T6) 156.7	A	Tone 6	
A/G CMD	12	TACTICAL	167.8125		167.8125		A		
A/G TAC	13	TACTICAL	172.5500		172.5500		A		
CALCORD	15	TACTICAL	156.0750	(T6) 156.7	156.0750	(T6) 156.7	A	MEDICAL A/G	
AIR GUARD	16		168.6250		168.6250	(T1) 110.9	A		
<b>9. Prepared by: Name:</b> Jeff Ferguson, Jay Shaffer, Alyssa Thornburg(t)    RESL									
Signature: _____									
<b>ICS 204</b>		Date/Time: 8/26/2023 2200				Personnel Count: 89			







**Controlled Unclassified Information/Basic**

<b>AIR OPERATIONS SUMMARY 220</b>	Prepared By: Terry Harris AOB	Prepared: 08/26/23	Prepared Time: 1700 hrs.
<b>1. 55INCIDENT NAME: SRF LIGHTNING COMPLEX KNEELAND HELIBASE</b>	<b>2. OPERATIONAL PERIOD</b> 08/27/23	<b>START TIME:</b> 0900	<b>END TIME:</b> 2000
		<b>SUNRISE:</b> 0637	<b>SUNSET:</b> 1957

**3. REMARKS** (Safety Notes, Hazards, Air Operations Special Equipment, etc.).

HIGH VELOCITY, SHIFTING, ERRATIC WINDS WILL AFFECT AIRCRAFT PERFORMANCE AND AVAILABILITY OVER THE FIRE.

STAY VIGILANT FOR CIVILIAN UAS AND UNAUTHORIZED AIRCRAFT

NO FLY ZONES: CAMP CREEK/ORLEANS 8/26/23-8/30/23 & SOMES BAR AREA -- 9/10/23/9/19/23

**4. READY ALERT AIRCRAFT:**  
REFERENCE MEDICAL PLAN


**5. TFR: 3/1682**  
TFR Frequency 126.2750  
Polygon up to 10,000' MSL

6. PERSONNEL	NAME	PHONE #	7. FREQUENCIES	AM	FM	8. FIXED-WING Avail/ Type/ Make-Model/ N#/ Base
AOBD	Terry Harris	936-366-4239	TFR	126.2750		N OSM AC 690 AA-15 BASED @ RDD
ASGS	Kelvin McElfish	909-907-2677	A/G Command A/G Tactical		167.8125 172.5500	
ATGS	Pat Basch	559-281-0533	Primary Air Tactics		171.0875	
HMGB 506	Ian Svendsen	406-925-2095	Secondary Air Tactics		171.8625	
HMGB 520	Shane Hagen	559-974-4500	Rotor Wing	126.425		
			Deck		168.3500	
			Air Guard		168.6250	110.9 TX

**9. HELICOPTERS**

FAA N#	TY	MAKE/ MODEL	BASE	START	AVAIL	REMARKS	FAA N#	TY	MAKE/ MODEL	BASE	START	AVAIL	REMARKS
6RA	1	CH-47D	019	0830	0900	Bucket	3HT(520)	2	BELL 205++	019	0830	0900	Rappel
7RA	1	CH-47D	019	0830	0900	Bucket	2ZZ(506)	2	BELL 212	01	0830	0900	Bucket/Recon
351E	3	AS-350B3	019	0830	0900	Recon/HLCO							



INCIDENT RADIO COMMUNICATIONS PLAN (ICS 205)		Incident Name		Date/Time Prepared		Operational Period Date/Time									
INCIDENT RADIO COMMUNICATIONS PLAN (ICS 205)		2023 SRF LIGHTNING COMPLEX		8/26/2023 1200		8/27/23 to 8/28/23 0700 TO 0700									
CONTROLLED CLASSIFIED INFORMATION/BASIC															
<b>Utilization of any frequency other than those listed on this form are prohibited, subject to fines by the FCC and demobilization from the incident.</b>															
Zn Ch	Function	Channel Name/Trunked Radio System Talkgroup	Assignment	RX Freq N or W	RX Tone/NAC	TX Freq N or W	TX Tone/NAC	Dev	Pwr	Mode A, D or M	Remarks				
1	COMMAND	NIFC C41	BR V	170.1375	167.9	165.1500	167.9	N	H	A	Tone 7				
2	COMMAND	NIFC C44	BR XXX	170.7625	167.9	165.6250	167.9	N	H	A	Tone 7				
3	COMMAND	NIFC C45	BR XL	173.0875	167.9	162.8125	167.9	N	H	A	Tone 7				
4	COMMAND	NIFC C54	BR XL	173.9250	167.9	170.5625	167.9	N	H	A	Tone 7				
5															
6	TACTICAL	VFIRE 22	DIV (A, D, H) (CC, DD,GG) L	154.2650	156.7	154.2650	156.7	N	H	A	Tone 6				
7	TACTICAL	VFIRE 23	DIV J / CONT	154.2950	156.7	154.2950	156.7	N	H	A	Tone 6				
8	TACTICAL	VFIRE 24	DIV M / ZZ	154.2725	156.7	154.2725	156.7	N	H	A	Tone 6				
9	TACTICAL	VFIRE 25	STR GRP	154.2875	156.7	154.2875	156.7	N	H	A	Tone 6				
10	TACTICAL	VTAC11	DIV ( R, T, U ) / Z	151.1375	156.7	151.1375	156.7	N	H	A	Tone 6				
11	TACTICAL	VTAC12	DIV N / Y / AA	154.4525	156.7	154.4525	156.7	N	H	A	Tone 6				
12	TACTICAL	A/G CMD	ALL DIVISIONS	167.8125	CSQ	167.8125	NONE	N	H	A					
13	TACTICAL	A/G TAC	ALL DIVISIONS	172.5500	CSQ	172.5500	NONE	N	H	A					
14	TACTICAL	A/G 43	LOCAL IA A/G	167.6000	NONE	167.6000	NONE	N	H	A					
15	TACTICAL	CALCORD	MEDICAL	156.0750	156.7	156.0750	156.7	N	H	A	Medical A/G				
16	EMERGENCY	AIRGUARD	EMERGENCY	168.6250	NONE	168.6250	110.9	N	H	A					
Prepared By (Communications Unit Leader)				Incident Location:HOOPA,CA				Forest / Unit / Jurisdiction: Six Rivers NF							
Kody Kerwin, COML (925) 953-3044 				County: HUMBOLDT				State: CA				Latitude: " N Longitude: W			
Lightening Communications :(510) 507-5460															



INCIDENT RADIO COMMUNICATIONS PLAN (ICS 205)		Incident Name		Date/Time Prepared		Operational Period Date/Time					
SRF LIGHTNING IA		8/26/2023 1200		8/27/2023 0700 - 8/28/2023 0700							
<b>Utilization of any frequency other than those listed on this form are prohibited, subject to fines by the FCC and demobilization from the incident.</b>											
Zn Ch	Function	Channel Name/Trunked Radio System Talkgroup	Assignment	RX Freq N or W	RX Tone/NAC	TX Freq N or W	TX Tone/NAC	Dev	Pwr	Mode A, D or M	Remarks
1	COMMAND	FOREST RPT		172.3750	NONE	164.1750	OST	N	H	A	T13-HORSE MTN/ T3-PINE RIDGE / T7 Ukonom Mtn
2	COMMAND	ADM RPT		170.4750	NONE	165.7500	OST	N	H	A	T5-ORLEANS MTN
3	COMMAND	RWP CMD		169.9875	NONE	164.4250	OST	N	H	A	T4 RED MTN/ T2 SCHOOL HOUSE MTN
4	COMMAND	HOOPA RPT		155.3850	NONE	150.8050	OST	N	H	A	T6 HORSE RIDGE
5	TACTICAL	HOOPA DIR		155.3850	NONE	155.3850	NONE	N	H	A	
6	TACTICAL	R5 PROJECT		168.6625	NONE	168.6625	NONE	N	H	A	
7	TACTICAL	NIFC T1		168.0500	NONE	168.0500	NONE	N	H	A	
8	TACTICAL	NIFC T2		168.2000	NONE	168.2000	NONE	N	H	A	
9	TACTICAL	NIFC T3		168.6000	NONE	168.6000	NONE	N	H	A	
10	TACTICAL	R5 T4		166.5500	NONE	166.5500	NONE	N	H	A	
11	TACTICAL	R5 T5		167.1125	NONE	167.1125	NONE	N	H	A	
12	TACTICAL	R5 T6		168.2375	NONE	168.2375	NONE	N	H	A	
13	Air-to-Ground	A/G 43 PRI		167.6000	NONE	167.6000	NONE	N	H	A	
14	Air-to-Ground	A/G 8 SEC		166.8750	NONE	166.8750	NONE	N	H	A	
15	TACTICAL	CALCORD	MEDEVAC	156.0750	Tone 6 156.7	156.0750	Tone 6 156.7	N	H	A	
16	EMERGENCY	AIRGUARD	EMERGENCY	168.6250	NONE	168.6250	Tone 1 110.9	N	H	A	EMERGENCY ONLY
Prepared By (Communications Unit Leader)				Incident Location: HOOPA				Forest / Unit / Jurisdiction: Six Rivers NF			
Kody Kerwin				County: Humboldt				Latitude: " 41.047764°N			
Kody Kerwin, COML (925) 953-3044				State: CA				Longitude: -123.672758°W			
Lightning Communications: (510) 507-5460											



<b>MEDICAL PLAN (206)</b>	1. INCIDENT NAME: <b>SRF LIGHTNING COMPLEX</b>	2. DATE PREPARED: <b>August 26, 2023</b>	3. TIME PREPARED: <b>1900</b>	4. OPERATIONAL PERIOD <b>08/27/23 - 08/28/23 0700-0700</b>
---------------------------	---	---	----------------------------------	---

**5. INCIDENT MEDICAL AID**

MEDICAL AID STATIONS	LOCATION	ALS	
		YES	NO
Frontline Medical	ICP 11120 CA-96, Hoopa, CA 95546	X	
Frontline Medical	12 Eyesee Road, Orleans, CA 95556	X	

**6. TRANSPORTATION**

**A. Ground Ambulance**

NAME	LOCATION	PHONE	ALS	
			Yes	No
Mountain Medics Ambulance AMBO 2	Branch X Resource	(530) 859-3157	X	
Mountain Medics Ambulance AMBO 4	Branch XX Resource	(530) 859-8416	X	
American Ambulance AMBO1241	Branch XL Resource	(559) 331-3936	X	
American Ambulance AMBO1233	Branch XX Resource	(559) 972-5162	X	

**B. Air Ambulance**

NAME	CONTACT	Type of Aircraft & Capability	ALS	
			Yes	No
Cal Fire 902	COMMAND	Helicopter Type 2 -ALS, Day Hoist Only (ETA 10 min.)	X	
Reach 5	COMMAND	Helicopter Type 3 -ALS 24 hour. (ETA 30 min.)	X	
CHP H14/H15	COMMAND	Helicopter Type 3 – ALS, Day Hoist Only (ETA 30 min.)	X	
Sac Metro Copter-1	COMMAND	Helicopter – ALS 24 hour, NVG, Hoist, Medevac (ETA 30 min.)	X	

**7. HOSPITALS**

NAME	ADDRESS	TRVL TIME		PHONE	TRAUMA		HELIPAD		BURN CENTER	
		AIR	GRND		Yes	No	YES	NO	YES	NO
		Min	Min		LVL					
<b>Mad River Community Hospital</b>	3800 Janes Rd. Arcata, CA 95521 40° 53.72" N, 124° 05.45 W	20 Min	60 Min	(707) 822-3621	LVL 4		X			X
<b>St. Joseph Hospital</b>	2700 Dolbeer St. Eureka, CA 95501 40° 22.10 N, 121° 41.40 W	20 Min	1.5 Hrs.	(707) 445-8121	LVL 3		X			X
<b>Mercy Medical Center Redding</b>	2175 Rosaline Ave. Redding, CA 96001 40° 34.33 N, 122° 23.80 W	30 Min	2 Hrs.	(530) 225-7201	LVL 2		X			X
<b>UC Davis Medical Center</b>	2315 Stockton Blvd. Sacramento, CA 95817 38° 33.32 N, 121° 27.35 W	2 Hrs	4.5 Hrs.	916-734-2011	LVL 1		X		X	

**8. MEDICAL EMERGENCY PROCEDURES**

**LINE "MEDICAL-EMERGENCY" PLAN:**

- **Crew Supervisor** to contact Division Supervisor/Operations with:
  - Patient Complaint, Condition and Location via Tactical or Command frequency.
  - Priority 1/Red & 2/Yellow patients trigger Incident within Incident (IWI).
- **Division Supervisor/Operation** contacts Communications/Dispatch:
  - Division Supervisor or POC\* will run "Medical –Emergency" on the Command frequency.
  - Division Supervisor or POC\* to use "Medical Incident Report" worksheet on back of this page or back of IRPG.
  - Communication contacts Medical Unit Leader on the Command frequency or cell phone (916) 591-9031 (Medical Emergencies Only).

POC\* (Point of Contact) and/or Operations

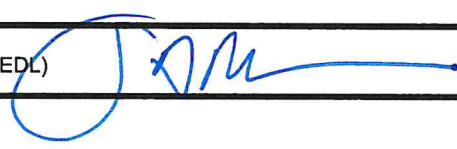
**LINE "NON-EMERGENCY INCIDENT" PLAN:**

- **Crew Supervisor** to contact Division Supervisor with:
  - Patient Complaint, Condition and Location via Tactical or Command frequency.
  - **Priority 3/Green, (Minor) Patients do not** trigger Incident within Incident (IWI).
- **Division Supervisor** to contact Communications/dispatch:
  - Division Supervisor or POC\* will run "Non-Emergency Incident" on the Command frequency.
  - Division Supervisor or POC\* will use "Medical Incident Report" worksheet on the back of this page or back of IRPG.
  - Communications contacts Medical Unit Leader on the Command frequency or cell phone (916) 591-9031 (For medical related incidents only).

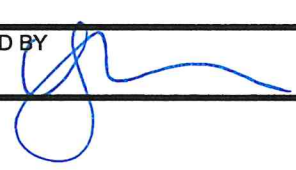
**IN-CAMP – 24 HOUR MEDICAL**

- Contact 911 and Medical Unit (916) 591-9031 with:
  - Patient Complaint, Condition and Location

9. PREPARED BY  
Scott Mohlenbrok (MEDL)



10. REVIEWED BY  
Safety Officer



**Medical Incident Report**

FOR A **NON-EMERGENCY INCIDENT**: WORK THROUGH CHAIN OF COMMAND TO REPORT AND TRANSPORT INJURED PERSONNEL AS NECESSARY.

FOR A **MEDICAL EMERGENCY**: IDENTIFY ON SCENE INCIDENT COMMANDER BY NAME AND POSITION AND ANNOUNCE **"MEDICAL EMERGENCY"** TO INITIATE RESPONSE FROM COMMUNICATIONS

**Use the following items to communicate situation to communications/dispatch.**

- 1. CONTACT COMMUNICATIONS / DISPATCH** (Verify correct frequency prior to starting report)  
*Ex: "Communications, Div. Alpha. Stand-by for Emergency Traffic."*
- 2. INCIDENT STATUS:** Provide incident summary (including number of patients) and command structure.  
*Ex: "Communications, I have a Red priority patient, unconscious, struck by a falling tree. Requesting air ambulance to Forest Road 1 at (Lat./Long.) This will be the Trout Meadow Medical Incident, IC is TFLD Jones. EMT Smith is providing medical care."*

Severity of Emergency AND Transport Priority (priority 1, 2, 3)	<input type="checkbox"/> <b>RED / PRIORITY 1 Life or limb threatening injury or illness. Evacuation need is IMMEDIATE</b> <i>Ex: Unconscious, difficulty breathing, bleeding severely, 2° – 3° burns more than 4 palm sizes, heat stroke, disoriented.</i> <input type="checkbox"/> <b>YELLOW / PRIORITY 2 Serious injury or illness. Evacuation may be DELAYED if necessary.</b> <i>Ex: Significant trauma, unable to walk, 2° – 3° burns not more than 1-3 palm sizes.</i> <input type="checkbox"/> <b>GREEN / PRIORITY 3 Minor Injury or illness. Non-Emergency transport</b> <i>Ex: Sprains, strains, minor heat-related illness.</i>	
Nature of Injury or Illness & Mechanism of Injury		<i>Brief Summary of Injury or Illness (Ex: Unconscious, Struck by Falling Tree)</i>
Transport Request		<i>Air Ambulance / Short Haul/Hoist Ground Ambulance / Other</i>
Patient Location		<i>Descriptive Location &amp; Lat. / Long. (WGS84)</i>
Incident Name		<i>Geographic Name + "Medical" (Ex: Trout Meadow Medical)</i>
On-Scene Incident Commander		<i>Name of on-scene IC of Incident within an Incident (Ex: TFLD Jones)</i>
Crew Patient Care		<i>Name of Care Provider (Ex: EMT Smith)</i>

**3. INITIAL PATIENT ASSESSMENT:** Complete this section for each patient as applicable (start with the most severe patient)

Agency Affiliation: (NO PATIENT NAMES)                      Federal                      Contractor                      Local Government

Patient Assessment:                      Age:                      Weight:                      Chief Complaint:

(If pertinent to Injury)      Skin Signs: (color/moisture/temp)                      Level of Consciousness:                      BP:                      HR:                      Respirations:

Treatment:

**4. TRANSPORT PLAN:**

Evacuation Location (*drop point, intersection, helispot, Lat. / Long, hazards*)                      Patient's ETA to Location:

**5. ADDITIONAL RESOURCES / EQUIPMENT NEEDS:**

*Paramedic / EMT - Crews - Immobilization Devices - AED - Oxygen - Trauma Bag - IV/Fluid(s) - Splints - Rope rescue - Wheeled litter - HAZMAT - Extrication*

**6. COMMUNICATIONS: Identify State Air/Ground EMS Frequencies and Hospital Contacts as applicable**

Function	Channel Name/Number	Receive (RX)	Tone/NAC *	Transmit (TX)	Tone/NAC *
COMMAND					
AIR-TO-GRND					
TACTICAL					

**7. CONTINGENCY: Considerations:** If primary options fail, what actions can be implemented in conjunction with primary evacuation method?  
*Be thinking ahead.*

**8. ADDITIONAL INFORMATION:** *Updates/Changes, etc.*

**REMEMBER:** Confirm ETA's of resources ordered. Act according to your level of training  
 Be Alert - Keep Calm - Think Clearly - Act Decisively

\*\*\* Follow up with MEDL upon return to ICP \*\*\*





## HUMAN RESOURCE MESSAGE



### Alertness

Alertness is the state of active attention by high sensory awareness such as being watchful and prompt to meet danger or emergency or being quick to perceive and act. It is related to psychology as well as to physiology. The team wants everyone to be mindful of their situation and to make it home safely. If you get tired pull over and take a nap, drink a coffee, and/or sing with the radio.

The Human Resources Specialists are here on assignment to help you and your teams manage the operational stress keeping your crews safe, positive, and productive increasing your situational awareness. Human Resources Specialist– Tony Torres 505-249-2341 (call/text) or email @ Anthony.Torres@usda.gov

### TEAM 2 FINANCE MESSAGE

- Federal Finance documents collected at Hoopa, Orleans, and Orick
- See Finance QR Code for email to submit documents (Agreements, Resource Order, Equipment Inspections, CTRs and Shift Tickets)
- PDF format is preferred for submitted documents.
- Note Comp/Claims QR Code for appropriate forms; also can call Cassie @ 805-450-4513
- Early assigned resources visit a Finance representative to see if your paperwork is in order.
- PRIMARY FINANCE LOCATION- HOOPA FIRE DEPT- Finance trailer hours 0600-2130 Daily
- Demob from SRF Lightning Complex occurring at Hoopa location

**CONTACT FINANCE @ 925-532-5440**

### CAL FIRE FINANCE MESSAGE

- CAL FIRE Finance Section is located at Redwood Acres Fair Grounds
- Please come by the Time Unit and start and update your FC-33
- Vendors, please drop off your agreements to the Time Unit



## CAL OES AREP

ERIC PETTERSON

(916) 634-8498



### TRAINING SPECIALIST MESSAGE

#### To assure proper documentation for your assignment:

1. Scan the QR Code on the **IAP cover**.
2. Complete the Trainee Registration Form.

#### At the end of your assignment:

**Trainee:** Complete the exit interview form. Use the exit interview QR code to access the document.

**Trainer:** Fill in the Position Task Book as completely as possible for this incident.

**Trainer:** Complete the ICS 225 performance evaluation and discuss with your Trainee. Make sure it's signed by both the Trainer and Trainee. Take a picture/copy of the ICS 225 and send it to [imt2training@gmail.com](mailto:imt2training@gmail.com)

The Training Specialist will send the training documents to the email address you provided. For training related questions, call/text Dominic Panno (TNSP) at 530-913-8251 or email- [imt2training@gmail.com](mailto:imt2training@gmail.com)



## RECYCLING IS HERE!

### Thanks for Recycling Right:

- ✓ Sort your trash
- ✓ Put recycling in a Blue Bag
- ✓ Empty liquids and remove caps from bottles
- ✓ Only non-perishable foods

Blue Recycling Bags available at Recycling Center and Refer.

### RESOURCE ADVISOR MESSAGE

Our goal is to support the mission of containing this wildfire while minimizing resource damage to the extent practical.

- The area where the fire is burning is culturally and naturally significant. Fostering good working relationships and minimizing impact to cultural sites will result from working closely, communicating early and often with specialists from the Karuk Tribe and Local archaeologists.
- Please coordinate with REAF's and Heritage Consultants prior to initiating line construction and limit falling ops as snags and other vegetation can have cultural significance.
- Yellow/White stripped flagging is utilized for identifying resource concerns.
- Please be mindful of diminishing water levels at drafting sites. Utilize fish screens and the appropriate decon procedures for drafting.
- Clean Fire Equip. prior to arriving and leaving the incident, weed wash is located at ICP.
- See information regarding Port-Orford-Cedar Root Disease on information boards.

### Public Information

GET YOUR PHOTOS TO US!

EMAIL TO: [2023.LIGHTNINGCOMPLEX@FIRENET.GOV](mailto:2023.LIGHTNINGCOMPLEX@FIRENET.GOV)

IF you have photos or video from this fire PLEASE come by the PIO Trailer to share or send to the email address above and we can post them to Inciweb and the Forest Facebook page.

REMEMBER:

- Be safe when taking pictures
- Make sure Firefighters are wearing all PPE
- Give us the time and date, location, crew or person shown, etc.
- Don't take photos of accidents, injuries, near misses, etc.

#### THINK BEFORE YOU POST

- Does this photo show your agency in a positive way?
- DO NOT post pictures of any accident, injuries, or victims

WE HAVE: LOST & FOUND

PACKAGE PICK-UP (MUST HAVE YOUR E/O NUMBER ON THE LABEL)

Six Rivers Lightning Fire Camp

11121 Hwy. 96

Hoopla, CA. 95546

FIRE PUBLIC INFORMATION LINE: (531) 536-0767

### DEMOB INSTRUCTIONS

Make sure your supervisor is aware of your demob date.

If you are driving, come see DEMOB on your last work day.

If you are flying, come see DEMOB three days before your last work day

#### Questions?

Phone:

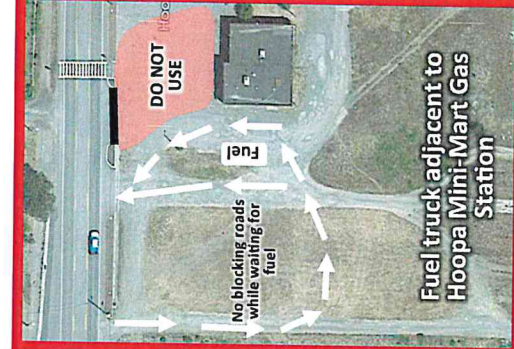
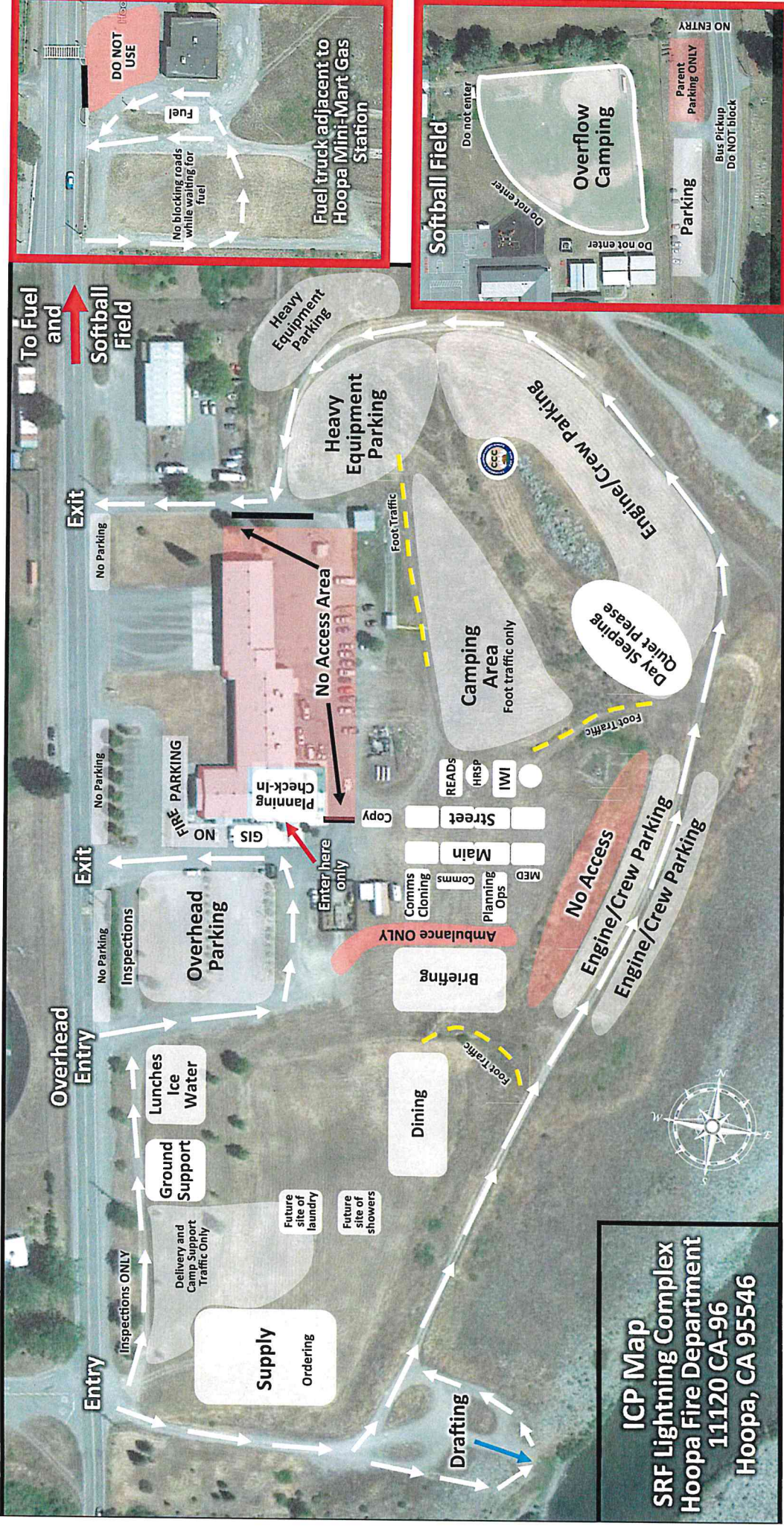
925-783-7744

Email:

[2023.lightningcomplex.demob@firenet.gov](mailto:2023.lightningcomplex.demob@firenet.gov)

8/25/2023





**ICP Map**  
**SRF Lightning Complex**  
**Hoopa Fire Department**  
**11120 CA-96**  
**Hoopa, CA 95546**



