










## ORGANIZATION ASSIGNMENT LIST (ICS 203)

|  |   |  |                              |  |   |
|--|---|--|------------------------------|--|---|
| <b>1. Incident Name:</b><br>2023 SRF Lightning Complex |   | <b>2. Operational Period: Date From:</b> 9/30/2023 |                              | <b>Date To:</b> 10/1/2023              |   |
|  |   | <b>Time From:</b> 0700                             |                              | <b>Time To:</b> 0700                   |   |
| <b>3. Incident Commander(s) and Command Staff:</b>     |   |  | <b>7. Operation Section:</b> |  |   |
| IC/UC's  | John Goss                                     | Operations   | Travis Thane                 |  |   |
| Deputy   | Jerry McGowan                                 | Deputy Operations                                  | Tom Himmelrich               |  |   |
| Safety Officer   | Doug McKelvey / Matt Lipson                   | Night Ops  |                              |  |   |
| Information Officer                                    | Kristen Allison / Derek Tisinger              | Staging Area                                       |                              |  |   |
| Liaison Officer  | Celeste Prescott/Steve Knuckles/Darrel Miller | Branch   | X                            | Shane Santos / George Trosi (t)        |   |
| <b>4. Agency/Organization Representatives:</b>         |   | Division/Group                                     | J                            | Brian Pitts                            |   |
| Agency/Organization                                    | Name  | Division/Group                                     | Y                            | Ryan Riddle                            |   |
| USFS AA  | Ted McArthur                                  | Division/Group                                     | Structure Group              | Steven Thime                           |   |
| USFS SRF AREP  | Jason Armbruster                              | Division/Group                                     |                              |  |   |
| USFS KNF AREP  | Chad Kirschbaum                               | Division/Group                                     |                              |  |   |
| HOOPA TRIBE  | Raldon Brown                                  | Branch   | XX                           | Robert Laeng / Mark Todd (t)           |   |
| KARUK TRIBE  | Vikki Preston                                 | Division/Group                                     | L                            | Todd Decker / Justin McArthur (t)      |   |
| YUROK TRIBE  | Rod Mendes                                    | Division/Group                                     | M                            | Jim Genung                             |   |
| CAL FIRE AREP  | Sean Mendes                                   | Division/Group                                     | N                            | R. Edmonson / C. Madden(t) / J. Kujala |   |
| CAL OES  | Rick Young                                    | Division/Group                                     | O                            | Mike Loeffler / Kevin Breitwieser (t)  |   |
| BIA AA   | Nathan Gogna                                  | Division/Group                                     | R                            | Chris Markey                           |   |
| HUMBOLDT OES   | Ryan Derby                                    | Branch   |                              |  |   |
| SISKIYOU OES   | Bryan Schenone                                | Division/Group                                     |                              |  |   |
| CAL TRAN   | Izzy Konops                                   | Division/Group                                     |                              |  |   |
| PG&E   | Dave Hotchriss                                | Division/Group                                     |                              |  |   |
| CCC Arep   | Ben Herbert                                   | Division/Group                                     |                              |  |   |
| FBAT   | Brian Stearns/Alexander Miyagishima           | Division/Group                                     |                              |  |   |
|  |   | Branch   |                              |  |   |
|  |   | Division/Group                                     |                              |  |   |
| <b>5. Planning Section:</b>                            |   | Division/Group                                     |                              |  |   |
| Chief  | Derek Parker / Jonathan Roberts (t)           | Division/Group                                     |                              |  |   |
| Resource Unit  | Dameron/Carlson/Lewis/Agueria                 | Division/Group                                     |                              |  |   |
| SCKN   | Roxanne Merrick                               | Division/Group                                     |                              |  |   |
| Situation Unit   | Jeffrey Chung / Zacariah Jackson (t)          | Branch   |                              |  |   |
| Demobilization Unit                                    | Thomas Skinner                                | Division/Group                                     |                              |  |   |
| GISS   | Melanie Hans / James Roberts                  | Division/Group                                     |                              |  |   |
| FBAN / IMET  | Patrick Doyle / Chris Foltz                   | Division/Group                                     |                              |  |   |
| ITSS   | Ulysses Huerta / Jacob Huerta (t)             | Division/Group                                     |                              |  |   |
| Training Tech Spec                                     | Robert Reville                                | Division/Group                                     |                              |  |   |
| LTAN   | Dan Osterman                                  | <b>Air Operations Branch</b>                       |                              | <b>Director:</b>                       | Rocco Terracciano   |
| Lead Read  | Kevin Keeler                                  | Air Support Group Supervisor                       |                              | Kevin McElfish                         |   |
| Air Resource Advisor                                   | Gayle Hagler / Carolyn Koury                  | Air Tactical Group Supervisor                      |                              |  |   |
| <b>6. Logistics Section</b>                            |   | Helibase Manager                                   |                              |  |   |
| Chief  | Dan Turner / Douglass Winn                    |  |                              |  |   |
| Supply Unit  | Mani Bouslaugh                                | <b>8. Finance/Administration Section:</b>          |                              |  |   |
| Facilities Unit  | Ronaldo Navarro / Richard Martinez            | Chief  | Lisa Wilson / Nina Hardin    |  |   |
| Ground Support Unit                                    | Dave Trussell/Dave Corral/Wendy Hanson (t)    | Time Unit  | Teresa Reniff                |  |   |
| Communications Unit                                    | Kody Kerwin                                   | Procurement Unit                                   | Paul Wood                    |  |   |
| Medical Unit   | Kain Packwood / Matthew Vierra                | Comp/Claims Unit                                   |                              |  |   |
| Security Manager                                       | David Clark                                   | Cost Unit  | Lee Piper                    |  |   |
| ORDM   | Sara Felix / Tammy Meyers (t)                 |  |                              |  |   |
| <b>Prepared By: Name:</b>                              | Jonathan Roberts                              | <b>Position/Title:</b>                             | PSC                          | <b>Signature:</b>                      |  |
| <b>ICS 203</b>   |   | <b>Date/Time:</b>                                  | 9/29/2023 2300 hours         |  |   |





## Fire Weather Forecast



**FORECAST NO:** 44  
**PREDICTION FOR:** Saturday's Operational Period  
**SHIFT DATE:** September 30, 2023  
**TIME AND DATE ISSUED:** September 29, 2023 1900 hrs

**INCIDENT:** 2023 SRF Lightning Complex  
**UNIT:** Six Rivers NF  
**SIGNED:** Chris Foltz *Chris Foltz*  
 Incident Meteorologist (IMET)

### Discussion:

Only very isolated showers remain possible early today before a shift toward drier conditions. Highs today will remain below normal but will be a few degrees warmer than Friday. The primary forecast focus today and tomorrow will center on increasing winds beginning this afternoon. Strong wind gusts in excess of 30 mph are expected after 1200 over the ridges and exposed areas. These strong winds will continue through the overnight with the potential for wind gusts exceeding 40 mph at times. Winds will diminish a bit on Sunday but still remain breezy with gusts of 25 to 30 mph expected over the ridges and exposed areas.

### TODAY:

**Sky/Weather:** Mostly cloudy early with showers ending by mid-day. Sky will begin to clear by mid-afternoon. Gusty winds possible during the afternoon and evening.

**Max Temperature: Valleys:** 68 to 73. **Mid-Slopes and Ridges:** 50 to 59.

**Min RH: Valleys:** 35 to 45 percent. **Mid-Slopes and Ridges:** 45 to 55 percent.

**20 ft Winds: Lower Valleys:** Terrain 3 to 7 mph becoming north 10 to 14 mph with gusts to 21 mph after 1200.

**Mid-slopes and Ridges:** Terrain 4 to 8 mph becoming north 16-20 mph with gusts to 35 mph after 1200.

**Transport Winds:** NE 26 mph.

**Chance of Rain:** 20 percent.

**Expected Rain Amount:** 0.00-0.05"

### TONIGHT:

**Sky/Weather:** Becoming mostly clear with gusty winds continuing along the ridges and exposed areas.

**Min Temperature: Lower Valleys:** 40 to 46. **Mid-Slopes and Ridges:** 39 to 45.

**Max RH: Lower Valleys:** 85 to 95 percent. **Mid-Slopes and Ridges:** 50 to 60 percent.

**20 ft Winds: Valleys/Lower Slopes:** Terrain/down-valley 5 to 9 mph.

**Mid-Slopes and Ridges:** North-northeast 12 to 16 mph with gusts to 30 mph

**Inversion:** 300 ft after 2100.

### SUNDAY:

**Sky/Weather:** Mostly sunny and continued breezy.

**Max Temperature: Valleys:** 72 to 77. **Mid-Slopes and Ridges:** 55 to 61.

**Min RH: Valleys:** 20 to 30 percent. **Mid-Slopes and Ridges:** 30 to 40 percent.

**20 ft Winds: Lower Valleys:** Terrain 3 to 7 mph becoming north-northeast 8 to 12 mph with gusts to 18 mph.

**Mid-slopes and Ridges:** North-northeast 13 to 17 mph with gusts to 25 mph.

**Transport Winds:** NE 17 mph.

**Chance of Rain:** 0 percent.

**Expected Rain Amount:** None.

**OUTLOOK FOR MONDAY THROUGH WEDNESDAY:** A drier and warmer weather pattern will continue to expand over the region. Afternoon highs each day will warm approximately 5 degrees from the day prior. This will result in highs reaching in the lower to middle 70s on the mid-slopes and ridges by Wednesday. Meanwhile, valleys could push the upper 80s to near 90 degrees. Winds will remain from the north-northeast each day with sustained winds generally between 10 and 15 mph with gusts to around 20 mph. Overnight humidity recoveries will gradually trend lower by mid-week with values remaining in the forties overnight. Afternoon minimum humidity values will range from twenty to forty percent depending on elevation. No precipitation is expected during this time period.

Weather observations can be texted to 816-833-6299 or emailed to [christopher.foltz@noaa.gov](mailto:christopher.foltz@noaa.gov)

## FIRE BEHAVIOR FORECAST

|  |  |
|--|--|
| <b>FORECAST NUMBER:</b> 43                   | <b>TYPE OF FIRE:</b> Wildfire          |
| <b>FIRE NAME:</b> 2023 SRF Lightning Complex | <b>OPERATIONAL PERIOD:</b> 09/30 Day   |
| <b>DATE ISSUED:</b> September 29, 2023       | <b>TIME ISSUED:</b> 1530               |
| <b>UNIT:</b> CA-SRF                          | <b>SIGNED:</b> /s/ Patrick Doyle, FBAN |

**WEATHER SUMMARY** (See Fire Wx Forecast)

**TOPOGRAPHY: Elevations:** 350-6,200 **Slopes:** 0%-100+% (0°-68°degrees)

**FUELS: Key Fuel Models, Fuel Moistures, FDR**

|  |                |   |
|--|----------------|---|
| <b>Grass/Shrub</b>                       | <b>GS2</b>     | <b>Forecasted:</b><br>NFDY (Y)<br>ERC: 26 (up 1)<br>Bl: 18 (up 5) |
| <b>Timber</b>                            | <b>TU5</b>     |   |
| <b>FDFM (1hr)</b>                        | 24<br>%▲13     |   |
| <b>10-hr (%)</b>                         | 25 % ▲13       |   |
| <b>100-hr (%)</b>                        | 21 % ▲1        |   |
| <b>1000-hr(%)</b>                        | 18 % ▲1        |   |
| <b>Live Fuels<br/>(Seasonal grasses)</b> | fully<br>cured |   |

Slate Creek RAWS (040330), PSA-NC04,  
NC=No change, ▲up, ▼down

**Probability of Ignition:** 5% Unshaded / 4% Shaded  
**Spotting Distance:** up to 0.3 mile (short range)  
Values below use 40% slope and assume upslope spread.

| Fuel Model  | Day         |                    | Night         |             |                    |
|-------------|-------------|--------------------|---------------|-------------|--------------------|
|             | FL<br>(Ft.) | ROS<br>(Ch/Hr<br>) | Fuel<br>Model | FL<br>(Ft.) | ROS<br>(Ch/Hr<br>) |
| Grass/Shrub | 0-1         | 0                  | GS2           | 0           | 1-20               |
| Timber      | 1-4         | 5                  | TU5           | 1-3         | 4                  |

**Fire Behavior (for new starts or unburned areas)**

### FIRE BEHAVIOR

#### GENERAL:

- Decreased fire activity throughout the fire area, except a few areas of isolated heat. Where heat is holding over, such as stump holes, boles of trees, sheltered litter/duff, or heavier fuel loads of dead/down logs.
- Nighttime relative humidity (Rh) recoveries have and will continue to increase fuel moisture values over the next few days. This will reduce availability of fine dead fuels, such as dry grass, conifer needles, and leaf litter from being readily available to carry fire except during the late afternoons during the burn period when the lowest fuel moistures follow a parallel nighttime high/daytime low pattern with the relative humidity.

#### SPECIFIC:

**Branch X:** Minimal fire activity most of the division. IR flight from night 9/27-28 showed significant number of isolated heat signatures dispersed over north-half Peach fire. But no intense or scattered for majority of area. Monitor for fire/heat creeping through duff and heavy fuels near control features, and effect of winds in the afternoon on known pockets of heat in heavier fuels for potential threats to the line.

**Branch XX:** Minimal fire activity throughout fire area, except for numerous isolated heat signatures in what could be considered the original footprint(s) of the Bluff #1, Blue Creek 2, Copper, Marlow, and very northern portion of Mosquito, near the GO Road (in general are of DP 22). Activity should pick up earliest in areas where alignment of solar heating (sunlight), south aspect, and exposure to wind (accelerates drying).

#### AIR OPERATIONS:

Cloudy in the morning, but skies clearing in the afternoon will improve air operations.

Sunrise: 7:10am, Sunset: 6:58pm, Daylength: 11 hours, 48 minutes, 14 seconds (-2:41min)

#### SAFETY:

Rolling material loosened by fire activity burning out the supporting structure is still a threat when working on fire perimeter, or along roadway. Stay vigilant and remain focused on the task at hand.







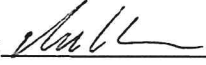






## ASSIGNMENT LIST (ICS 204 WF)

CONTROLLED UNCLASSIFIED  
INFORMATION//BASIC

|  |     |   |                 |                |                     |                       |                    |                                    |  |
|--|-----|---|-----------------|----------------|---------------------|-----------------------|--------------------|------------------------------------|--|
| <b>1. Incident Name:</b><br>2023 SRF Lightning Complex   |     | <b>2. Operational Period:</b><br>Date From: 09/30/23    Date To: 10/01/23<br>Time From: 0700    Time To: 0700 |                 |                |                     | <b>3. Branch</b><br>X |                    | <b>Division</b><br>Structure Group |  |
| <b>4. Operations Personnel:</b>  |     |   |                 |                |                     | Page 1 of 2           |                    |                                    |  |
| Operations Section Chief: <b>Travis Thane</b>  |     |   |                 | Night Ops:     |                     |                       |                    |                                    |  |
| Branch Director: <b>Shane Santos / George Troisi (t)</b>   |     |   |                 | Branch Safety: |                     |                       |                    |                                    |  |
| Division/Group Supervisor: <b>Steven Thime</b>   |     |   |                 | Air Attack:    |                     |                       |                    |                                    |  |
| <b>5. Resources Assigned:</b>  |     | <b>** Resources Below in Bold are 12 Hour **</b>  |                 |                |                     |                       |                    |                                    |  |
| Resource Identifier  | ALS | LWD   | Leader          | Personnel      | Request #           | Hours                 | Reporting Location |                                    |  |
| WFM2 EAGLE LAKE  |     | 10/1  | Dane Nesbit     | 10             | O-781               | 0700 - 2100           | ICP                |                                    |  |
| ENG3 BLUE LAKE RANCHERIA   |     | 10/2  | Lester White    | 3              | E-128               | 0700 - 2100           | ICP                |                                    |  |
| ENG3 SRF E322  |     | 10/4  | Kyle Fears      | 5              | E-524               | 0700 - 2100           | ICP                |                                    |  |
| ENG3 ENGINE 10   |     | 10/2  | Raymee Castillo | 4              | E-460               | 0700 - 2100           | ICP                |                                    |  |
| ENG3 ANF E338  |     | 9/30  | Robert Raney    | 5              | E-462               | 0700 - 2100           | ICP                |                                    |  |
| ENG6 HOLTER E13334   |     | 9/30  | Eric Randolph   | 3              | E-463               | 0700 - 2100           | ICP                |                                    |  |
| ENG6 FELIXFIRE E619  |     | 10/1  | Guss Cerda      | 3              | E-476               | 0700 - 2100           | ICP                |                                    |  |
| <del>ENG6 MCKENZIE FIRE</del> → <b>DIVO</b>  |     | 10/4  | Preston Ley     | 3              | E-495               | 0700 - 2100           | ICP                |                                    |  |
| ENG6 AMARAL NURSERY  |     | 10/2  | Luis Amaral     | 3              | E-496               | 0700 - 2100           | ICP                |                                    |  |
| ENG6 ROBIN WINSTON   |     | 10/2  | Jay Flora       | 3              | E-494               | 0700 - 2100           | ICP                |                                    |  |
| WTS1 NORTHSTATE (LOST RO)  |     | 10/6  | Willie Yentsch  | 1              | E-24                | 0700 - 2100           | ICP                |                                    |  |
| WTS1 328131  |     | 9/30  | John McGary     | 1              | E-486               | 0700 - 2100           | ICP                |                                    |  |
| WTS2 GRANITE COMMERCIAL  |     | 10/7  | Rick Walton     | 1              | E-445               | 0700 - 2100           | ICP                |                                    |  |
| WTS2 NORTHSTATE 267128   |     | 10/3  | Gary Chandler   | 1              | E-464               | 0700 - 2100           | ICP                |                                    |  |
| WTS2 WARREN PARTRIDGE  |     | 9/30  | Will Jimerson   | 1              | E-465               | 0700 - 2100           | ICP                |                                    |  |
| TFLD WOODBURY  |     | 10/10   | Shawn Woodbury  | 1              | O-940               | 0700 - 2100           | ICP                |                                    |  |
| TFLD MEDVIN  |     | 10/6  | Brad Medvin     | 1              | O-897               | 0700 - 2100           | ICP                |                                    |  |
| TFLD TURNER (t)  |     | 10/6  | Daniel Turner   | 1              | O-898               | 0700 - 2100           | ICP                |                                    |  |
| <b>6. Work Assignments:</b>  |     |   |                 |                |                     |                       |                    |                                    |  |
| TASK: Provide point protection preparation. Maintain immediate readiness. Backhaul resources where appropriate.                |     |   |                 |                |                     |                       |                    |                                    |  |
| PURPOSE: Protection of life, property and the environment.   |     |   |                 |                |                     |                       |                    |                                    |  |
| END STATE: Return the area to as natural a condition as possible. Accountable property is returned to supply when appropriate. |     |   |                 |                |                     |                       |                    |                                    |  |
| <b>7. Special Instructions:</b>  |     |   |                 |                |                     |                       |                    |                                    |  |
| Coordinate with READs for any repair work.   |     |   |                 |                |                     |                       |                    |                                    |  |
| Strategically withdrawal accountable property to the Orleans Supply Unit.  |     |   |                 |                |                     |                       |                    |                                    |  |
| Do not utilize community hydrants unless there is fire impact to values at risk.   |     |   |                 |                |                     |                       |                    |                                    |  |
| Utilize drafting as primary water source.  |     |   |                 |                |                     |                       |                    |                                    |  |
| Resource advisors are working across all Branches.   |     |   |                 |                |                     |                       |                    |                                    |  |
| Medical resources are available from Div Y.  |     |   |                 |                |                     |                       |                    |                                    |  |
| <b>8. Communications</b>   |     |   |                 |                |                     |                       |                    |                                    |  |
| Name   | Ch  | Function  | Rx Freq         | Rx Tone        | Tx Freq             | Tx Tone               | Mode               | Notes                              |  |
| NIFC C44   | 2   | COMMAND   | 170.7625        | (T7) 167.9     | 165.6250            | (T7) 167.9            | A                  |                                    |  |
| VTAC 12  | 11  | TACTICAL  | 154.4525        | (T6) 156.7     | 154.4525            | (T6) 156.7            | A                  |                                    |  |
| A/G CMND   | 12  | A/G CMD   | 167.8125        |                | 168.8125            |                       | A                  |                                    |  |
| CALCORD  | 15  | TACTICAL  | 156.0750        | (T6) 156.7     | 156.0750            | (T6) 156.7            | A                  |                                    |  |
| AIRGUARD   | 16  | AIRGUARD  | 168.6250        | 0.0            | 168.6250            | (T1) 110.9            | A                  |                                    |  |
| <b>9. Prepared by: Name:</b>   |     | Micah Carlson   |                 |                | RESL                |                       |                    |                                    |  |
| Signature:                                |     | Date/Time: 9/29/2023 2200   |                 |                | Personnel Count: 50 |                       |                    |                                    |  |
| ICS 204  |     |   |                 |                |                     |                       |                    |                                    |  |

NIMS IAP

CONTROLLED UNCLASSIFIED INFORMATION//BASIC







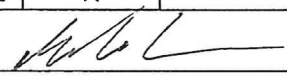






## ASSIGNMENT LIST (ICS 204 WF)

CONTROLLED UNCLASSIFIED  
INFORMATION//BASIC

|  |                           |   |                            |                        |           |  |                    |       |
|--|---------------------------|---|----------------------------|------------------------|-----------|--|--------------------|-------|
| <b>1. Incident Name:</b><br>2023 SRF Lightning Complex   |                           | <b>2. Operational Period:</b><br>Date From: 09/30/23    Date To: 10/01/23<br>Time From: 0700    Time To: 0700 |                            | <b>3. Branch</b><br>XX |           | <b>Division</b><br>N   |                    |       |
| <b>4. Operations Personnel:</b>  |                           |   |                            | Page 1 of 2            |           | November   |                    |       |
| Operations Section Chief: <b>Travis Thane</b>  |                           |   | Night Ops:                 |                        |           |  |                    |       |
| Branch Director: <b>Robert Laeng / Mark Todd (t)</b>   |                           |   | Branch Safety:             |                        |           |  |                    |       |
| Division/Group Supervisor: <b>R. Edmonson / C. Madden(t) / J. Kujala (t)</b>   |                           |   | Air Attack:                |                        |           |  |                    |       |
| <b>5. Resources Assigned:</b>  |                           | <b>** Resources Below in Bold are 12 Hour **</b>  |                            |                        |           |  |                    |       |
| Resource Identifier  | ALS                       | LWD   | Leader                     | Personnel              | Request # | Hours  | Reporting Location |       |
| HC2 PONDEROSA TIMBERLAND   |                           | 10/7  | <b>Caleb Taylor</b>        | 20                     | C-99      | 0700 - 2100  | ICP                |       |
| HC2 FUEGO FIRE AND FORESTRY  |                           | 10/6  | <b>Gianluigi Benvenuto</b> | 20                     | C-100     | 0700 - 2100  | ICP                |       |
| HC2 ROCHA REFORESTATION  |                           | 10/9  | <b>Jorge Duran</b>         | 20                     | C-101     | 0700 - 2100  | ICP                |       |
| HC2 J.O. INTERNATIONAL REFO  |                           | 10/6  | <b>Tanner Moore</b>        | 20                     | C-102     | 0700 - 2100  | ICP                |       |
| ENG6 MT ADAMS WILDFIRE 1   |                           | 10/1  | <b>Andrew Chico</b>        | 3                      | E-472     | 0700 - 2100  | ICP                |       |
| ENG6 IMPERIAL FORESTRY   |                           | 10/1  | <b>Alvarado Gonzales</b>   | 3                      | E-474     | 0700 - 2100  | ICP                |       |
| ENG6 WOODPECKER  |                           | 10/2  | <b>Michelle Herrin</b>     | 3                      | E-488     | 0700 - 2100  | ICP                |       |
| ENG6 WEST VALLEY CITY FD E6  |                           | 10/2  | <b>Morris Barker</b>       | 3                      | E-499     | 0700 - 2100  | ICP                |       |
| FMOD UNDERDOG MOD 6  |                           | 10/4  | <b>Richard Brown</b>       | 2                      | O-309     | 0700 - 2100  | ICP                |       |
| FMOD GOD AND COUNTRY   |                           | 10/2  | <b>Joseph Johnson</b>      | 2                      | O-566     | 0700 - 2100  | ICP                |       |
| WTS2 LENAHAN   |                           | 10/7  | <b>Douglas Covey</b>       | 1                      | E-293     | 0700 - 2100  | ICP                |       |
| WTS2 STEPHEN LARRY   | 10/8                      | <del>10/6</del>   | <b>Nolan Dinsmore</b>      | 1                      | E-402     | 0700 - 2100  | ICP                |       |
| WTS2 DARRAH LOGGING 1  |                           | 10/1  | <b>Carl Walker</b>         | 1                      | E-404     | 0700 - 2100  | ICP                |       |
| WTS2 DARRAH LOGGING 2  |                           | 10/6  | <b>Bob Cretton</b>         | 1                      | E-405     | 0700 - 2100  | ICP                |       |
| MBM2 TOUGH CO  |                           | 10/11   | <b>Brandon Leboy</b>       | 2                      | E-231     | 0700 - 2100  | ICP                |       |
| MBM2 LOUIS MOOSIOS   |                           | 10/11   | <b>Louis Moosios</b>       | 2                      | E-294     | 0700 - 2100  | ICP                |       |
| MBM2 SERMON FARMS  |                           | 10/14   | <b>Roy Sermon</b>          | 2                      | E-347     | 0700 - 2100  | ICP                |       |
| MBM2 LAP CONTRACTING   |                           | 10/8  | <b>Cyle Moss</b>           | 2                      | E-351     | 0700 - 2100  | ICP                |       |
| <b>6. Work Assignments:</b>  |                           |   |                            |                        |           |  |                    |       |
| TASK: Patrol, hold, and improve containment lines. Determine Suppression Repair needs. Continue mastication project on the Bluff Creek Road to Hwy 96. |                           |   |                            |                        |           |  |                    |       |
| PURPOSE: Hold the fire within established control lines.   |                           |   |                            |                        |           |  |                    |       |
| END STATE: Keep fire within planned perimeter. Return the area to as natural a condition as possible.  |                           |   |                            |                        |           |  |                    |       |
| <b>7. Special Instructions:</b>  |                           |   |                            |                        |           |  |                    |       |
| Coordinate with READs for any repair work.   |                           |   |                            |                        |           |  |                    |       |
| Do not utilize community hydrants unless there is fire impact to values at risk.   |                           |   |                            |                        |           |  |                    |       |
| Utilize drafting as primary water source.  |                           |   |                            |                        |           |  |                    |       |
| Resource advisors are working across all Branches.   |                           |   |                            |                        |           |  |                    |       |
| SOFRRs from Div M are shared with Div N.   |                           |   |                            |                        |           |  |                    |       |
| <b>8. Communications</b>   |                           |   |                            |                        |           |  |                    |       |
| Name   | Ch                        | Function  | Rx Freq                    | Rx Tone                | Tx Freq   | Tx Tone  | Mode               | Notes |
| NIFC C44   | 2                         | COMMAND   | 170.7625                   | (T7) 167.9             | 165.6250  | (T7) 167.9   | A                  |       |
| NIFC T4  | 9                         | TACTICAL  | 166.7250                   | (T7) 167.9             | 166.7250  | (T7) 167.9   | A                  |       |
| A/G CMND   | 12                        | A/G CMD   | 167.8125                   |                        | 168.8125  |  | A                  |       |
| CALCORD  | 15                        | TACTICAL  | 156.0750                   | (T6) 156.7             | 156.0750  | (T6) 156.7   | A                  |       |
| AIRGUARD   | 16                        | AIRGUARD  | 168.6250                   | 0.0                    | 168.6250  | (T1) 110.9   | A                  |       |
| <b>9. Prepared by: Name:</b>   |                           | Micah Carlson   |                            | RESL                   |           | Signature:  |                    |       |
| ICS 204  | Date/Time: 9/29/2023 2200 |   |                            | Personnel Count: 108   |           |  |                    |       |

NIMS IAP

CONTROLLED UNCLASSIFIED INFORMATION//BASIC

# ASSIGNMENT LIST (ICS 204 WF)

CONTROLLED UNCLASSIFIED  
INFORMATION//BASIC

|  |            |                               |                         |            |                |                    |                     |                 |  |
|--|------------|-------------------------------|-------------------------|------------|----------------|--------------------|---------------------|-----------------|--|
| <b>1. Incident Name:</b>   |            | <b>2. Operational Period:</b> |                         |            |                | <b>3. Branch</b>   |                     | <b>Division</b> |  |
| <b>2023 SRF Lightning Complex</b>  |            | Date From: 09/30/23           | Date To: 10/01/23       |            |                | <b>XX</b>          |                     | <b>N</b>        |  |
|  |            | Time From: 0700               | Time To: 0700           |            |                | Page 2 of 2        |                     | November        |  |
| <b>4. Operations Personnel:</b>  |            |                               |                         |            |                |                    |                     |                 |  |
| Operations Section Chief: <b>Travis Thane</b>  |            |                               |                         |            | Night Ops:     |                    |                     |                 |  |
| Branch Director: <b>Robert Laeng / Mark Todd (t)</b>   |            |                               |                         |            | Branch Safety: |                    |                     |                 |  |
| Division/Group Supervisor: <b>R. Edmonson / C. Madden(t) / J. Kujala (t)</b>   |            |                               |                         |            | Air Attack:    |                    |                     |                 |  |
| <b>5. Resources Assigned:</b>  |            |                               |                         |            |                |                    |                     |                 |  |
| <b>** Resources Below in Bold are 12 Hour **</b>   |            |                               |                         |            |                |                    |                     |                 |  |
| Resource Identifier  | ALS        | LWD                           | Leader                  | Personnel  | Request #      | Hours              | Reporting Location  |                 |  |
| <b>MBM2 DAVIS CORP 2</b>   |            | <b>10/8</b>                   | <b>Matt Deister</b>     | <b>2</b>   | <b>E-438</b>   | <b>0700 - 2100</b> | <b>ICP</b>          |                 |  |
| <b>MBM3 WARNER ENTERPRISES</b>   |            | <b>10/4</b>                   | <b>Cesar Rodriguez</b>  | <b>2</b>   | <b>E-357</b>   | <b>0700 - 2100</b> | <b>ICP</b>          |                 |  |
| <b>MBM3 DAVIS CORP 3</b>   |            | <b>10/13</b>                  | <b>Joe Stafford</b>     | <b>2</b>   | <b>E-358</b>   | <b>0700 - 2100</b> | <b>ICP</b>          |                 |  |
| <b>CHP1 DAVIS CORP</b>   |            | <b>10/10</b>                  | <b>Jose Fabela</b>      | <b>2</b>   | <b>E-332</b>   | <b>0700 - 2100</b> | <b>ICP</b>          |                 |  |
| <b>CHP2 FIRE TRAX</b>  |            | <b>10/6</b>                   | <b>Dillon Ormsby</b>    | <b>3</b>   | <b>E-297</b>   | <b>0700 - 2100</b> | <b>ICP</b>          |                 |  |
| <b>CHP2 THE TREE GUYS</b>  |            | <b>10/9</b>                   | <b>Bleu Luna</b>        | <b>3</b>   | <b>E-298</b>   | <b>0700 - 2100</b> | <b>ICP</b>          |                 |  |
| <b>TFLD FRAZIER</b>  |            | <b>10/1</b>                   | <b>Thomas Frazier</b>   | <b>1</b>   | <b>O-753</b>   | <b>0700 - 2100</b> | <b>ICP</b>          |                 |  |
| <b>TFLD DOWNS</b>  |            | <b>10/3</b>                   | <b>Michael Downs</b>    | <b>1</b>   | <b>O-885</b>   | <b>0700 - 2100</b> | <b>ICP</b>          |                 |  |
| <b>HEQB HARTMAN</b>  |            | <b>10/6</b>                   | <b>Carson Hartman</b>   | <b>1</b>   | <b>O-887</b>   | <b>0700 - 2100</b> | <b>ICP</b>          |                 |  |
| <b>HEQB VOETBERG (t)</b>   |            | <b>9/30</b>                   | <b>Vanessa Voetberg</b> | <b>1</b>   | <b>O-807</b>   | <b>0700 - 2100</b> | <b>ICP</b>          |                 |  |
| <b>REMS 1 BLACKWOODS</b>   | <b>YES</b> | <b>10/4</b>                   | <b>Patrick Kabanuck</b> | <b>4</b>   | <b>O-842</b>   | <b>0700 - 2100</b> | <b>ICP</b>          |                 |  |
| <b>EMPF QUEENAN</b>  |            | <b>10/4</b>                   | <b>James Queenan</b>    | <b>1</b>   | <b>O-839</b>   | <b>0700 - 2100</b> | <b>ICP</b>          |                 |  |
| <b>EMTF MCDONALD</b>   |            | <b>10/4</b>                   | <b>Taylor McDonald</b>  | <b>1</b>   | <b>O-837</b>   | <b>0700 - 2100</b> | <b>ICP</b>          |                 |  |
| <b>AMBU 2 MTN MEDICS</b>   | <b>YES</b> | <b>9/30</b>                   | <b>Mark Cooper</b>      | <b>2</b>   | <b>E-29</b>    | <b>0700 - 2100</b> | <b>ICP</b>          |                 |  |
| <b>SOFR QUIGLEY</b>  |            | <b>10/8</b>                   | <b>Tim Quigley</b>      | <b>1</b>   | <b>O-884</b>   | <b>0700 - 2100</b> | <b>ICP</b>          |                 |  |
| <i>TFLD (4) Colin Shafer</i>   |            |                               |                         |            |                |                    |                     |                 |  |
| <i>TFLD Roman Rodriguez</i>  |            |                               |                         |            |                |                    |                     |                 |  |
| <b>6. Work Assignments:</b>  |            |                               |                         |            |                |                    |                     |                 |  |
| TASK: Patrol, hold, and improve containment lines. Determine Suppression Repair needs. Continue mastication project on the Bluff Creek Road to Hwy 96. |            |                               |                         |            |                |                    |                     |                 |  |
| PURPOSE: Hold the fire within established control lines.   |            |                               |                         |            |                |                    |                     |                 |  |
| END STATE: Keep fire within planned perimeter. Return the area to as natural a condition as possible.  |            |                               |                         |            |                |                    |                     |                 |  |
| <b>7. Special Instructions:</b>  |            |                               |                         |            |                |                    |                     |                 |  |
| Coordinate with READs for any repair work.   |            |                               |                         |            |                |                    |                     |                 |  |
| Do not utilize community hydrants unless there is fire impact to values at risk.   |            |                               |                         |            |                |                    |                     |                 |  |
| Utilize drafting as primary water source.  |            |                               |                         |            |                |                    |                     |                 |  |
| Resource advisors are working across all Branches.   |            |                               |                         |            |                |                    |                     |                 |  |
| SOFRs from Div M are shared with Div N.  |            |                               |                         |            |                |                    |                     |                 |  |
| <b>8. Communications</b>   |            |                               |                         |            |                |                    |                     |                 |  |
| Name   | Ch         | Function                      | Rx Freq                 | Rx Tone    | Tx Freq        | Tx Tone            | Mode                | Notes           |  |
| NIFC C44   | 2          | COMMAND                       | 170.7625                | (T7) 167.9 | 165.6250       | (T7) 167.9         | A                   |                 |  |
| NIFC T4  | 9          | TACTICAL                      | 166.7250                | (T7) 167.9 | 166.7250       | (T7) 167.9         | A                   |                 |  |
| A/G CMND   | 12         | A/G CMD                       | 167.8125                |            | 168.8125       |                    | A                   |                 |  |
| CALCORD  | 15         | TACTICAL                      | 156.0750                | (T6) 156.7 | 156.0750       | (T6) 156.7         | A                   |                 |  |
| AIRGUARD   | 16         | AIRGUARD                      | 168.6250                | 0.0        | 168.6250       | (T1) 110.9         | A                   |                 |  |
| <b>9. Prepared by: Name:</b>   |            |                               |                         |            |                |                    |                     |                 |  |
| Micah Carlson  |            |                               |                         |            | RESL           |                    |                     |                 |  |
| Signature:   |            |                               |                         |            |                |                    |                     |                 |  |
| <b>ICS 204</b>   |            | Date/Time: 9/29/2023          |                         |            | 2200           |                    | Personnel Count: 27 |                 |  |

NIMS IAP

CONTROLLED UNCLASSIFIED INFORMATION//BASIC



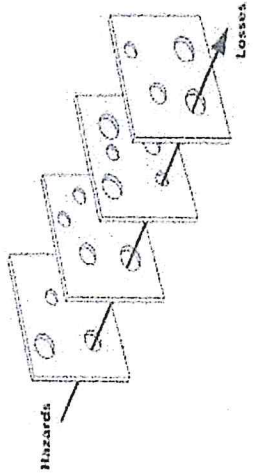






|   |   |                            |                          |
|---|---|----------------------------|--------------------------|
| <b>AIR OPERATIONS SUMMARY 220</b>           | Prepared By: Rocco Terracciano            | Prepared: 9/29/2023        | Prepared Time: 1700      |
| <b>1. INCIDENT NAME: 2023 SRF LIGHTNING</b> | <b>2. OPERATIONAL PERIOD</b><br>9/30/2023 | <b>START TIME:</b><br>0800 | <b>END TIME:</b><br>2000 |
|   |   | <b>SUNRISE:</b><br>07:08   | <b>SUNSET:</b><br>19:00  |

**3. REMARKS:** (Safety Notes, Hazards, etc.)  
See Air Ops Pilot Map for No-fly zones.



**4. READY ALERT AIRCRAFT:**

IA: H 512  
 Kneeland Helibase  
 Cal Fire 8355  
 Kneeland , Ca. 95549

Medivac: SEE MEDICAL PLAN  
 Short haul Scott Valley

Order Through  
 Communications

**5. TFR: 317458**  
**317477**  
**126.2750**

| 6. PERSONNEL | NAME              | PHONE #      | 7. FREQUENCIES  | AM       | FM       | 8A. FIXED-WING                                |
|--------------|-------------------|--------------|-----------------|----------|----------|---|
| AOBD         | Rocco Terracciano | 951-204-8461 | A/A Fix         | 126.2750 |          | AIRTANKERS- none assigned.                    |
| HEBM         | Rex Sundstrom     | 218-368-8554 | A/A Rotor       | 126.4250 |          | 8B. Aerial Supervision / Personnel / Location |
| HEBM(t)      | Steve Ocampo      | 530-575-0368 | Air Tactics     |          | 171.0875 | ATGS -none assigned.                          |
|              |                   | 530-927-9780 | IA A/G Command  |          | 167.8125 |   |
|              |                   |              | IA A/G Tactical |          | 172.5500 |   |
|              |                   |              | IA A/G 43       |          | 167.6000 |   |
|              |                   |              | TOLC            |          | 167.550  |   |
|              |                   |              | DECK            |          | 168.350  |   |
|              |                   |              |                 |          |          | H3 (ICP/PEARCH) N 41 18.38 W 123 33.21        |

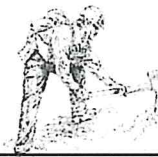
**9. HELICOPTERS:** (Order through ATGS or Operations)

| FAA N#      | TY | MAKE/MODEL | BASE | START | AVAIL | REMARKS | FAA N# | TY | MAKE/MODEL | BASE | START | AVAIL | REMARKS |
|-------------|----|------------|------|-------|-------|---------|--------|----|------------|------|-------|-------|---------|
| 205BT (512) | 2  | B205 A1++  | O-19 | 0830  | 0900  | Bucket  |        |    |            |      |       |       |         |
| 351E        | 3  | A-Star B3  | O-19 | 0830  | 0900  | Recon   |        |    |            |      |       |       |         |

APPROVED BY /s/ Rocco Terracciano AOBD



|  |                                |   |
|--|--------------------------------|---|
| <b>Incident:</b><br>SRF Lightning Complex CA-MDF-00896 | <b>Date:</b><br>9-30/10-1/2023 | <b>Operational Period:</b><br>0700-0700 |
|--|--------------------------------|---|



## ***SAFETY MESSAGE***

*Fire fighter safety comes first on every fire, every time*



### **Major Hazards and Risks:**

- Driving - Snags - Encounters with the public - Travel time to medical care

### **The Weakest Link and Medical Response Times!**

- Every division has one.
- Identify with Division Leadership and Safety.
- Where will the injury occur?
- Who do you notify?
- How long to respond?
- How long to extract?
- How long to prep for transport?
  - Air (if available) Call for Air... Plan for Ground
  - Division R 2½ Hours from DP 53-55 to DP 5
  - Division O 2 Hours from DP 215 to DP 5
  - Division N/M ¾ -1 Hour to DP 5
  - Division Y ¾ - 1 Hour to DP 5
  - Plus additional time to definitive care.
- Develop and understand the plan.
- Adjust with the movement of resources.
- Briefing for every change.

### **Other things to consider:**

- Patient Status, Road Status: (Wet, narrow/winding, One way in/out, Smoke impact), Public in the area, Time of day.

## **HAVE A PLAN BEFORE IT HAPPENS!**

*P.A.C.E (Primary, Alternate, Contingency, Emergency)*

#### Safety Officers:

**Team Safety Officers:** Doug McKelvey SOF, Matthew Lipson SOF, Kenneth Glazer SOF(T)

| INCIDENT RADIO COMMUNICATIONS PLAN (ICS 205)  |               | Incident Name<br><b>2023 SRF LIGHTNING COMPLEX<br/>BRANCH X</b> |                  | Date/Time Prepared<br><b>9/29/2023 1200</b> | Operational Period Date/Time<br><b>9/30/23 to 10/1/23 0700 to 0700</b> |   |     |              |                |                  |
|---|---------------|---|------------------|---|--|---|-----|--------------|----------------|------------------|
| CONTROLLED CLASSIFIED INFORMATION/BASIC   |               |   |                  |   |  |   |     |              |                |                  |
| Utilization of any frequency other than those listed on this form are prohibited, subject to fines by the FCC and demobilization from the incident. |               |   |                  |   |  |   |     |              |                |                  |
| Zn Ch   | Function      | Channel Name/Trunked Radio System Talkgroup                     | Assignment       | RX Freq N or W                              | RX Tone/NAC  | TX Tone/NAC                                 | Dev | Pwr          | Mode A, D or M | Remarks          |
| 1   | COMMAND       | NIFC C41  | COMMAND          | 170.1375                                    | Tone 7<br>167.9  | Tone 7<br>167.9                             | N   | H            | A              | UKONOM MOUNTAIN  |
| 2   | COMMAND       | NIFC C44  | COMMAND          | 170.7625                                    | Tone 7<br>167.9  | Tone 7<br>167.9                             | N   | H            | A              | ORLEANS MOUNTAIN |
| 3   | COMMAND       | NIFC C45  | COMMAND          | 173.0875                                    | Tone 7<br>167.9  | Tone 7<br>167.9                             | N   | H            | A              | HOG RANGE        |
| 4   | COMMAND       | NIFC C12  | COMMAND          | 173.0375                                    | Tone 7<br>167.9  | Tone 7<br>167.9                             | N   | H            | A              | PROSPECT HILL    |
| 5   | COMMAND       | NIFC C55  | COMMAND          | 173.7250                                    | Tone 7<br>167.9  | Tone 7<br>167.9                             | N   | H            | A              | ROCK CREEK       |
| 6   | TACTICAL      | VFIRE 22  | NIGHT OPERATIONS | 154.2650                                    | Tone 6<br>156.7  | Tone 6<br>156.7                             | N   | H            | A              |                  |
| 7   | TACTICAL      | VFIRE 23  | DIV J            | 154.2950                                    | Tone 6<br>156.7  | Tone 6<br>156.7                             | N   | H            | A              |                  |
| 8   | TACTICAL      | VFIRE 24  | AVAILABLE        | 154.2725                                    | Tone 6<br>156.7  | Tone 6<br>156.7                             | N   | H            | A              |                  |
| 9   | TACTICAL      | VFIRE 25  | DIV Y            | 154.2875                                    | Tone 6<br>156.7  | Tone 6<br>156.7                             | N   | H            | A              |                  |
| 10  | TACTICAL      | VTAC11  | CONTINGENCY GRP  | 151.1375                                    | Tone 6<br>156.7  | Tone 6<br>156.7                             | N   | H            | A              |                  |
| 11  | TACTICAL      | VTAC12  | STRUCTURE GRP    | 154.4525                                    | Tone 6<br>156.7  | Tone 6<br>156.7                             | N   | H            | A              |                  |
| 12  | Air-to-Ground | A/G CMD   | ALL DIVISIONS    | 167.8125                                    | NONE   | NONE  | N   | H            | A              |                  |
| 13  | Air-to-Ground | A/G TAC   | ALL DIVISIONS    | 172.5500                                    | NONE   | NONE  | N   | H            | A              |                  |
| 14  | Air-to-Ground | A/G 43  | LOCAL IA A/G     | 167.6000                                    | NONE   | NONE  | N   | H            | A              |                  |
| 15  | TACTICAL      | CALCORD   | MEDICAL          | 156.0750                                    | Tone 6<br>156.7  | Tone 6<br>156.7                             | N   | H            | A              |                  |
| 16  | EMERGENCY     | AIRGUARD  | EMERGENCY        | 168.6250                                    | NONE   | Tone 1<br>110.9                             | N   | H            | A              | EMERGENCY ONLY   |
| Prepared By (Communications Unit Leader) <i>Kody Kerwin</i>   |               |   |                  | Incident Location: ORLEANS                  |  | Forest / Unit / Jurisdiction: Six Rivers NF |     |              |                |                  |
| Kody Kerwin, COML (925) 953-3044 Communications: 510-507-1544   |               |   |                  | County: Humboldt                            | State: CA  | Latitude: " N                               |     | Longitude: W |                |                  |



| INCIDENT RADIO COMMUNICATIONS PLAN (ICS 205)  |               | Incident Name<br><b>2023 SRF LIGHTNING COMPLEX<br/>BRANCH XX</b> |                  | Date/Time Prepared<br><b>9/29/2023 1200</b> |                 | Operational Period Date/Time<br><b>9/30/23 to 10/1/23 0700 to 0700</b> |                 |   |     |                |                  |
|---|---------------|--|------------------|---|-----------------|--|-----------------|---|-----|----------------|------------------|
| <b>CONTROLLED CLASSIFIED INFORMATION/BASIC</b>  |               |  |                  |   |                 |  |                 |   |     |                |                  |
| Utilization of any frequency other than those listed on this form are prohibited, subject to fines by the FCC and demobilization from the incident. |               |  |                  |   |                 |  |                 |   |     |                |                  |
| Zn Ch   | Function      | Channel Name/Trunked Radio System Talkgroup                      | Assignment       | RX Freq N or W                              | RX Tone/NAC     | TX Freq N or W   | TX Tone/NAC     | Dev   | Pwr | Mode A, D or M | Remarks          |
| 1   | COMMAND       | NIFC C41   | COMMAND          | 170.1375                                    | Tone 7<br>167.9 | 165.1500   | Tone 7<br>167.9 | N   | H   | A              | UKONOM MOUNTAIN  |
| 2   | COMMAND       | NIFC C44   | COMMAND          | 170.7625                                    | Tone 7<br>167.9 | 165.6250   | Tone 7<br>167.9 | N   | H   | A              | ORLEANS MOUNTAIN |
| 3   |               |  |                  |   |                 |  |                 |   |     |                |                  |
| 4   | COMMAND       | NIFC C54   | COMMAND          | 173.9250                                    | Tone 7<br>167.9 | 170.5625   | Tone 7<br>167.9 | N   | H   | A              |                  |
| 5   | COMMAND       | NIFC C55   | COMMAND          | 173.7250                                    | Tone 7<br>167.9 | 171.0250   | Tone 7<br>167.9 | N   | H   | A              |                  |
| 6   | TACTICAL      | TAC 1  | NIGHT OPERATIONS | 168.0500                                    | Tone 7<br>167.9 | 168.0500   | Tone 7<br>167.9 | N   | H   | A              | NIFC T1          |
| 7   | TACTICAL      | TAC 2  | DIV L            | 168.2000                                    | Tone 7<br>167.9 | 168.2000   | Tone 7<br>167.9 | N   | H   | A              | NIFC T2          |
| 8   | TACTICAL      | TAC 3  | DIV M            | 168.6000                                    | Tone 7<br>167.9 | 168.6000   | Tone 7<br>167.9 | N   | H   | A              | NIFC T3          |
| 9   | TACTICAL      | TAC 4  | DIV N            | 166.7250                                    | Tone 7<br>167.9 | 166.7250   | Tone 7<br>167.9 | N   | H   | A              | NIFC T4          |
| 10  | TACTICAL      | TAC 5  | DIV O            | 166.7750                                    | Tone 7<br>167.9 | 166.7750   | Tone 7<br>167.9 | N   | H   | A              | NIFC T5          |
| 11  | TACTICAL      | TAC 6  | DIV R            | 168.2500                                    | Tone 7<br>167.9 | 168.2500   | Tone 7<br>167.9 | N   | H   | A              | NIFC T6          |
| 12  | Air-to-Ground | A/G CMD  | ALL DIVISIONS    | 167.8125                                    | NONE            | 167.8125   | NONE            | N   | H   | A              |                  |
| 13  | Air-to-Ground | A/G TAC  | ALL DIVISIONS    | 172.5500                                    | NONE            | 172.5500   | NONE            | N   | H   | A              |                  |
| 14  | Air-to-Ground | A/G 43   | LOCAL IA A/G     | 167.6000                                    | NONE            | 167.6000   | NONE            | N   | H   | A              |                  |
| 15  | TACTICAL      | CALCORD  | MEDICAL          | 156.0750                                    | Tone 6<br>156.7 | 156.0750   | Tone 6<br>156.7 | N   | H   | A              |                  |
| 16  | EMERGENCY     | AIRGUARD   | EMERGENCY        | 168.6250                                    | NONE            | 168.6250   | Tone 1<br>110.9 | N   | H   | A              | EMERGENCY ONLY   |
| Prepared By (Communications Unit Leader) <i>Kody Kerwin</i>   |               |  |                  | Incident Location: ORLEANS                  |                 |  |                 | Forest / Unit / Jurisdiction: Six Rivers NF |     |                |                  |
| Kody Kerwin, COML (925) 953-3044 Communications: 510-507-1544   |               |  |                  | County: Humboldt State: CA                  |                 |  |                 | Latitude: " N Longitude: " W                |     |                |                  |

# SRF Lightning Complex FINANCE PROCEDURES

Finance Email: [2023.lightningcomplex.finance@firenet.gov](mailto:2023.lightningcomplex.finance@firenet.gov)

Please submit your documents

## ELECTRONICALLY.

(If you are completing CTRs/Shift Tickets on paper, you can take a picture, save it as a PDF and then email it.)

ALL RESOURCES – When emailing, **please include your RO# in the subject line** and on all documents. Provide a contact phone number in your email.

For easy document submission, scan the QR codes.



At **check-in** submit the following:

- Resource Order
- Manifest/Roster
- Cooperator agreement or contract (*w/ correct resource highlighted*)
- AD Casual Hire Form
- Vehicle Inspection Form

Daily submit the following:

- CTRs
- Shift Tickets

*Ensure all CTR/Shift Tickets are signed and dated.*

*Contracted Resources: Please ensure daily hours worked do NOT exceed operational period without including written justification and supervisor's approval.*

Recommended Naming of files:

- CTR\_O99\_230929 (for CTR RO#O99 dated 9/29/23)
- ST\_E99\_230929\_30 (for Shift Ticket E-99 dated 9/29/23-9/30/23)

Demobing soon? We will need the below documents to process your OF-288/286.

At **DEMOB** submit the following:

- Final CTR/Shift Tickets w/ projected travel home
- Release Vehicle Inspection Form



## HUMAN RESOURCES MESSAGE

### YOUR RIGHTS AND RESPONSIBILITIES

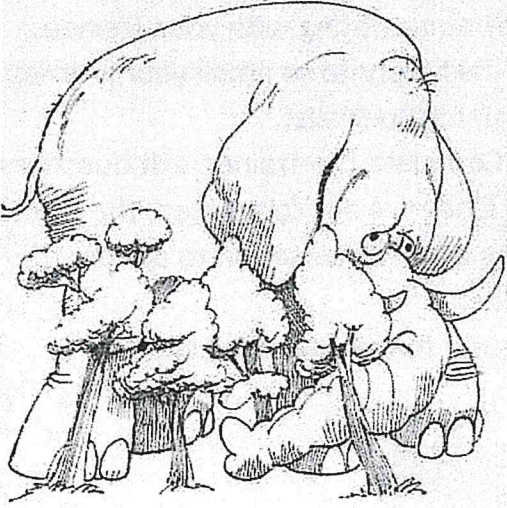
#### Rights:

- ✦ To work in a harassment-free environment where people treat one another with dignity, equity, courtesy and respect.
- ✦ To say "no" to unwelcome advances or requests for favors.
- ✦ To file complaints or grievances through appropriate avenues.

#### Responsibilities:

- ✦ To behave in a manner that treats people with dignity, equity, courtesy and respect.
- ✦ To abide by agency and incident ethics and conduct regulations.
- ✦ To report any harassment or other inappropriate behavior you observe or experience.

The role of the HRSP is to assist Incident Personnel and Incident Management with human resource, civil rights, and inappropriate behavior concerns.

|   |   |
|---|---|
| <p><b>REMEMBER:</b></p> <p>We have a responsibility to report <b>ANY</b> harassment or other inappropriate behavior you <u>observe</u> or <u>experience</u>.</p> <p>Don't act like you can't see the elephant because the trees are in the way.</p> | <p><b>FIND THE ELEPHANT</b></p> <p>can you find the elephant hidden in this picture?</p>  |
|---|---|

Incident Human Resource Specialist: Karen Hartman  
Phone: 801-368-3493



# ***Training Specialist***

## ***2023 SRF Lightning Complex***

**The Training Specialist is working remotely. Training Specialist contact information for the 2023 SRF Lightning Complex:**

- Robert Rivelle
- Important: If any Trainee or Trainer has any questions or concerns, call/text: 707.498.1761 “anytime”.
- Email: robert\_rivelle@nps.gov

### **How to register as a Trainee:**

1. Use the QR code below or on the front of the IAP to register. If you’re unable to register using the QR code, please call 707.498.1761.
2. Once registered, you will receive text and email updates.

### **How to close-out your training assignment:**

1. **Trainer and Trainee:** Have a conversation, open dialog between both.
2. **Trainer:** Complete an Evaluation Record in the back of the Position Task Book and make as many entries as possible within the individual tasks. Discuss this with your Trainee.
3. **Trainer:** Complete an individual performance rating (ICS 225) and go over the performance rating with your Trainee.
4. **Trainee:** Text a photo or email your individual performance rating (ICS 225) to the Training Specialist.
5. **Trainee:** Complete the Trainee exit questions at the QR code below.
6. **Trainee:** Once 1-4 are completed, the Trainee and the Training Specialist will have a brief conversation to discuss the Task Book and assignment with the Trainee.
7. **Done,** except for safe travels home!

#### **Trainee Registration**



#### **Trainee Exit Questions**





## TENTATIVE RELEASE

9/30/2023

### CREWS

C-92 1400 (CR2I) HAT CREEK

### EQUIPMENT

E-461 0715 (ENG3) ENGINE - 310  
E-481 0730 (ENG3) ENG3 - CASRF E331  
E-486 0745 (WTS1) WTS1 - SEMPLE, JOHN  
E-459 0800 (ENG6) ID-CTF E673  
E-341 0815 (WTS2) CUTTING EDGE

### OVERHEAD

O-760 0700 (DIVS) CHAMBERS, MATTHEW  
O-672 0700 (TIME) HARRISON, DALE  
O-765 0730 (EMPF) SIMPSON, JEFF  
O-716 0800 (PIO3) ABRAMSON, ERIC  
O-670 0800 (PROC) BOYD, SARAH L  
O-877 0800 (DIVS) SHIELDS, ROBERT JOHN  
O-495 0845 (SMOD) KARUK 1  
O-764.1 0900 (MEDV) FREMONT COUNTY EMS  
O-764 0900 (EMPF) HOLTOM, PAYTON  
O-873 1100 (TFLD) DYE, DAVEY DOLAN  
O-754 1200 (TFLD) COX, JONATHAN

10/1/2023

### CREWS

C-96 0800 (CR2I) BEAR JAW

### EQUIPMENT

E-228 0700 (POT1) NORTHSTATE HEAVY EQUIPMENT  
E-156 0715 (ENG6) J3 CONTRACTING  
E-231 0730 (MBM2) TOUGH CO  
E-462 0745 (ENG3) ANF E- 338  
E-463 0800 (ENG6) HOLTER - E13334  
E-458 0815 (ENG6) CMR - E5162  
E-465 0830 (WTS2) WARREN PARTRIDGE-386818  
E-487 0845 (ENG6) PACIFIC OASIS INC

### OVERHEAD

O-743.54 0600 (PIO3) BOWERS-ZOSCHG, SUZANNE DAWN  
O-762 0600 (SOFR) THOMSON, DARBY  
O-767 0700 (ASGS) EMPEY, MARK  
O-761 0730 (DIVS) PITTS, BRIAN  
O-771 0745 (DIVS) GENUING, JIM  
O-775 0800 (RSOP) REMS - MODULE - RAPID EXTRACTION  
O-807 0815 (HEQB) VOETBERG, VANESSA

# LG Reimbursement Message (CFAA)

## 2023 SRF Lightning Complex (CA-SRF-000986)

If you are responsible for completing F42's and reimbursement documentation, please ensure you are registered in MARS and have a Username and Password prior to DMOB as ALL F42's will be completed electronically through MARS.

CAL OES Contact for 2023 SRF Lightning Complex

Cal OES AREP

Rick Young (916) 541-3165

[ricky.young@caloes.ca.gov](mailto:ricky.young@caloes.ca.gov)



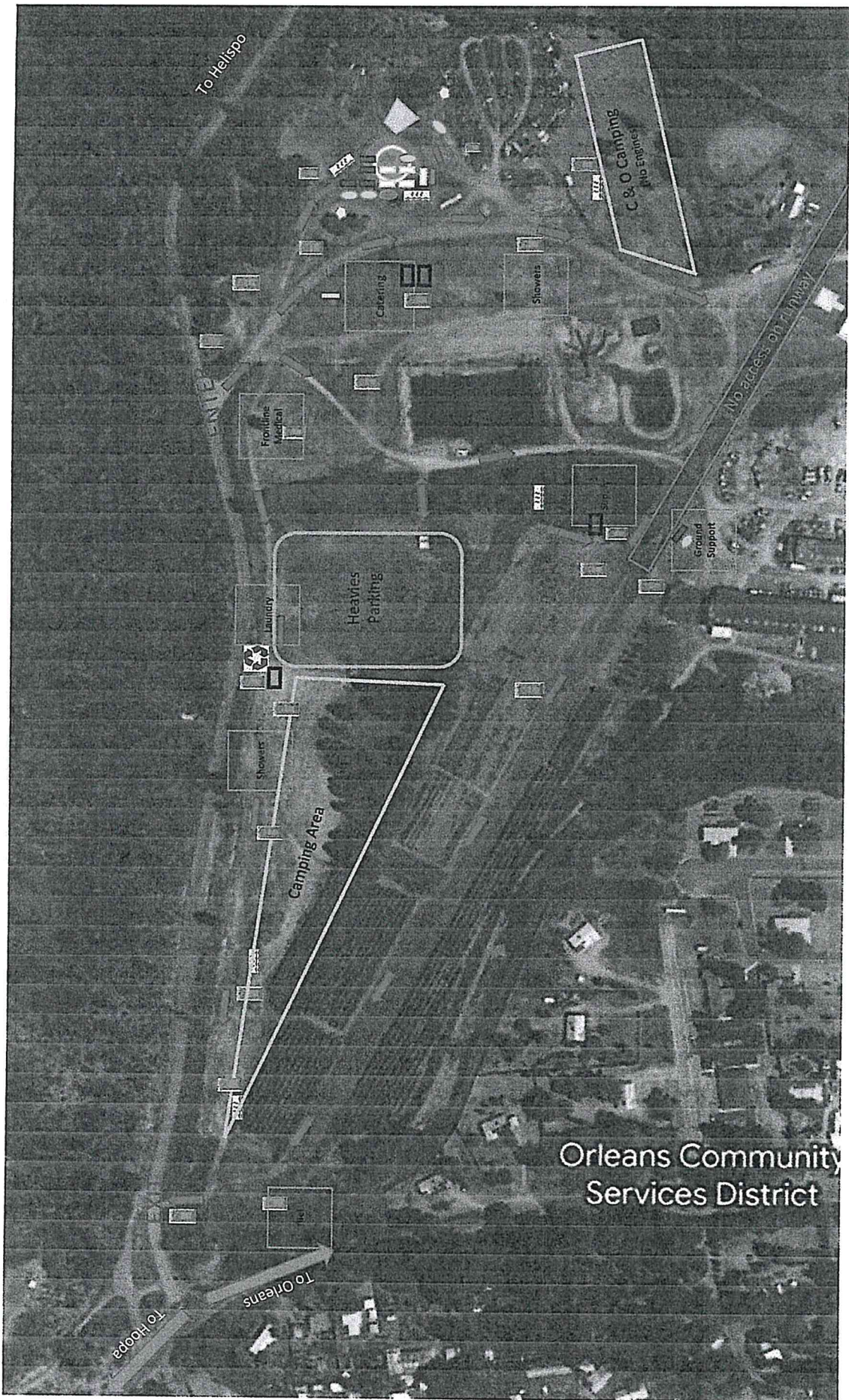
Cal OES Check-In



MARS


















| 1. Incident Name  |   | 2. Operational Period                   |  |     |  |         |    |                                       |
|---|---|---|--|-----|--|---------|----|---------------------------------------|
| <b>SRF LIGHTNING COMPLEX</b>  |   | Date/Time:<br><b>09/30/23 0700-1900</b> |  |     |  |         |    |                                       |
| 3. Medical Aid Stations / Ambulance Services                          |   |   |  |     |  |         |    |                                       |
| Name  | Location  | Frequency                               | Advanced Life Support (ALS)<br>Yes No  |     |  |         |    |                                       |
| Frontline Medical Trailer   | ORLEANS ICP                                     | Walk-In                                 | X  |     |  |         |    |                                       |
| <b>INCIDENT AMBULANCES</b>  |   |   |  |     |  |         |    |                                       |
| AMBO-5 Wilderness Medics  | DIV J   | Command                                 | X  |     |  |         |    |                                       |
| AMBO-2 Mountain Medics  | DIV N   | Command                                 | X  |     |  |         |    |                                       |
| AMBO-3 Med Transport Inc  | DIV M   | Command                                 | X  |     |  |         |    |                                       |
| AMBO-7 Injury Care EMS  | DIV R   | Command                                 | X  |     |  |         |    |                                       |
| <b>LOCAL AMBULANCE</b>  |   |   |  |     |  |         |    |                                       |
| Hoopla Ambulance  | ALS Intercept for HWY 96/196. DP 5              | 911 or 530-625-4180                     | X  |     |  |         |    |                                       |
| 4. Air Rescue / Air Ambulance Services                                |   |   |  |     |  |         |    |                                       |
| Name  | Location  | Aircraft & Capability                   |  |     |  |         |    |                                       |
| Reach Air Medical 5   | Redding   | ALS                                     | 911  |     |  |         |    |                                       |
| CHP H-14/ H15   | Redding   | ALS/ Hoist                              | 911  |     |  |         |    |                                       |
| North Coast Dispatch Air Desk   |   |   | (707) 441-3658   |     |  |         |    |                                       |
| 5. Hospitals (all times estimated from incident location)             |   |   |  |     |  |         |    |                                       |
| Name & Level  | GPS Datum – (NAD 83)<br>Degrees Decimal Minutes |   | Travel Time<br>(From ICP)  |     | Phone                                    | Helipad |    | Address                               |
|   | Lat:  | Long:                                   | Air  | Gnd |  | Yes     | No |                                       |
| Mad River Community Hosp<br>(Level 4)                                 | N 40° 53.72'                                    | W 124° 05.45'                           | 30   | 2   | (707) 826-8264                           | X       |    | 3800 Janes Rd<br>Arcada, CA           |
|   | MINS  |   | HR   |     |  |         |    |                                       |
| St. Joseph Hosp<br>(Level 3 Antivenom)                                | N 40° 22.10'                                    | W 121° 41.40'                           | 35   | 2   | (707) 269-4250                           | X       |    | 2700 Dolbeer St<br>Eureka, CA         |
|   | MINS  |   | HR   |     |  |         |    |                                       |
| Mercy Medical Center<br>(Level 2)                                     | N 40° 34.33'                                    | W 122° 23.80'                           | 50   | 3   | (775) 982-2005                           | X       |    | 2175 Rosaline Ave<br>Redding, CA      |
|   | MINS  |   | HR   |     |  |         |    |                                       |
| U.C. Davis Medical Center<br>(Level 1 Trauma / Burn)                  | N 38° 33.28'                                    | W 121° 27.35'                           | 2  | 5   | (916) 734-5669 ED<br>(916) 734-3544 Rcrd | X       |    | 2315 Stockton Blvd.<br>Sacramento, CA |
|   | MINS  |   | HRS  |     |  |         |    |                                       |
| 6. Division / Crew Emergency Pre-Plan                                 |   |   |  |     |  |         |    |                                       |
| <i>Update and discuss with assigned resources daily.</i>              |   |   |  |     |  |         |    |                                       |
| Fireline EMT / Medic's Division /<br>Branch Location                  |   |   |  |     |  |         |    |                                       |
| Air Hoist site location site:<br>Lat: / Long: / Elevation:            |   |   |  |     |  |         |    |                                       |
| Helispot:<br>Lat: / Long: / Elevation:<br>MED LZ:                     |   |   |  |     |  |         |    |                                       |
| 7. Prepared By (Medical Unit Leader)                                  |   | 8. Date/Time                            | 9. Reviewed By (Safety Officer)  |     | 10. Date/Time                            |         |    |                                       |
| On Call MEDL 24HR (925) 324-9776<br>Kain Packwood MEDL (209) 202-2450 |   | 09/29/2023 1700                         | SOF1 Matt Lipson<br> |     | 09/29/2023 1700                          |         |    |                                       |

**Medical Incident Report**

FOR A **NON-EMERGENCY INCIDENT**: WORK THROUGH CHAIN OF COMMAND TO REPORT AND TRANSPORT INJURED PERSONNEL AS NECESSARY.

FOR A **MEDICAL EMERGENCY**: IDENTIFY ON SCENE INCIDENT COMMANDER BY NAME AND POSITION AND ANNOUNCE "MEDICAL EMERGENCY" TO INITIATE RESPONSE FROM COMMUNICATIONS

**Use the following items to communicate situation to communications/dispatch.**

**1. CONTACT COMMUNICATIONS / DISPATCH** (Verify correct frequency prior to starting report)

*Ex: "Communications, Div. Alpha. Stand-by for Emergency Traffic."*

**2. INCIDENT STATUS:** Provide incident summary (including number of patients) and command structure.

*Ex: "Communications, I have a Red priority patient, unconscious, struck by a falling tree.*

*Requesting air ambulance to Forest Road 1 at (Lat./Long.)*

*"This will be the Trout Meadow Medical Incident, IC is TFLD Jones. EMT Smith is providing medical care."*

|   |   |   |
|---|---|---|
| Severity of Emergency / Transport Priority        | <input type="checkbox"/> <b>RED / PRIORITY 1 Life or limb threatening injury or illness. Evacuation need is IMMEDIATE</b><br><i>Ex: Unconscious, difficulty breathing, bleeding severely, 2° - 3° burns more than 4 palm sizes, heat stroke, disoriented.</i> |   |
|   | <input type="checkbox"/> <b>YELLOW / PRIORITY 2 Serious Injury or illness. Evacuation may be DELAYED if necessary.</b><br><i>Ex: Significant trauma, unable to walk, 2° - 3° burns not more than 1-3 palm sizes.</i>  |   |
|   | <input type="checkbox"/> <b>GREEN / PRIORITY 3 Minor Injury or illness. Non-Emergency transport</b><br><i>Ex: Sprains, strains, minor heat-related illness.</i>   |   |
| Nature of Injury or Illness & Mechanism of Injury |   | <i>Brief Summary of Injury or Illness<br/>(Ex: Unconscious, Struck by Falling Tree)</i> |
| Transport Request                                 |   | <i>Air Ambulance / Short Haul/Hoist<br/>Ground Ambulance / Other</i>                    |
| Patient Location                                  |   | <i>Descriptive Location &amp; Lat. / Long. (WGS84)</i>                                  |
| Incident Name                                     |   | <i>Geographic Name + "Medical"<br/>(Ex: Trout Meadow Medical)</i>                       |
| On-Scene Incident Commander                       |   | <i>Name of on-scene IC of Incident within an<br/>Incident (Ex: TFLD Jones)</i>          |
| Crew Patient Care                                 |   | <i>Name of Care Provider<br/>(Ex: EMT Smith)</i>  |

**3. INITIAL PATIENT ASSESSMENT:** Complete this section for each patient as applicable (start with the most severe patient)

Patient Assessment:      Age:      Weight:      Chief Complaint:

(IRPG PAGE 106)

Skin Signs: (color/moisture/temp)      Level of Consciousness:      BP:      HR:      Respirations:

Treatment:

**4. TRANSPORT PLAN:**

Evacuation Location (drop point, intersection, helispot, Lat. / Long, hazards)      Patient's ETA to Location:

**5. ADDITIONAL RESOURCES / EQUIPMENT NEEDS:**

*Paramedic / EMT - Crews - Immobilization Devices - AED - Oxygen - Trauma Bag - IV/Fluid(s) - Splints - Rope rescue - Wheeled litter - HAZMAT - Extrication*

**6. COMMUNICATIONS: Identify State Air/Ground EMS Frequencies and Hospital Contacts as applicable**

| Function    | Channel Name/Number | Receive (RX) | Tone/NAC * | Transmit (TX) | Tone/NAC * |
|-------------|---------------------|--------------|------------|---------------|------------|
| COMMAND     |                     |              |            |               |            |
| AIR-TO-GRND |                     |              |            |               |            |
| TACTICAL    |                     |              |            |               |            |

**7. CONTINGENCY: Considerations:** If primary options fail, what actions can be implemented in conjunction with primary evacuation method?  
*Be thinking ahead.*

**8. ADDITIONAL INFORMATION:** Updates/Changes, etc.

**REMEMBER:**      Confirm ETA's of resources ordered. Act according to your level of training.

**Be Alert - Keep Calm - Think Clearly - Act Decisively**  
**\*\*\* Follow up with MEDL upon return to ICP \*\*\***