





## ORGANIZATION ASSIGNMENT LIST (ICS 203)

<b>1. Incident Name:</b> 2023 SRF Lightning Complex		<b>2. Operational Period: Date From:</b> 10/10/2023		<b>Date To:</b> 10/15/2023	
		<b>Time From:</b> 0700		<b>Time To:</b> 0700	
<b>3. Incident Commander(s) and Command Staff:</b>			<b>7. Operation Section:</b>		
IC/UC's	Rod Mendes, Tristen Kiehl (t)	Operations	Jake Akerberg / Derrick Branham (t)		
Deputy	Gordon Meyer	Planning Operations	Steve D'Ambra		
Safety Officer	Richard Hamden	Night Ops			
Information Officer	Eric Abramson / Basho Parks	Staging Area			
Liaison Officer		Division/Group	REPAIR	Josh Wright / Kevin Breitwieser (t)	
Human Resources		Division/Group	ROADS	Josh Wright / Matthew Stanford (t)	
<b>4. Agency/Organization Representatives:</b>			Division/Group		
Agency/Organization	Name	Division/Group			
USFS AA	Nolan Colegrove	Division/Group			
USFS KNF AREP	Chard Kirschbaum	Division/Group			
HOOPA TRIBE	Raldon Brown	Division/Group			
KARUK TRIBE	Meeko Sanchez	Division/Group			
YUOK TRIBE		Division/Group			
CAL FIRE AREP	Sean Mendes	Division/Group			
BIA AA	Nathan Gogna	Division/Group			
SRF PAO	Adrienne Rublaco	Division/Group			
CAL TRAN	Izzy Konops	Division/Group			
PG&E	Dave Hotchriss	Division/Group			
CCC Arep	Ben Herbert	Division/Group			
FBAT	Brian Stearns/Alexander Miyagishima	Division/Group			
		Division/Group			
		Division/Group			
		Division/Group			
		Division/Group			
<b>5. Planning Section:</b>			Division/Group		
Chief	Jeff Ferguson	Division/Group			
Deputy		Division/Group			
Resource Unit		Division/Group			
Situation Unit	Jeffery Chung	Division/Group			
Demobilization Unit	RIST	Division/Group			
GISS	Melanie Hans	Division/Group			
FOBS	Bryce Sweeny	Division/Group			
IMET		Division/Group			
Training Tech Spec	Robert Reville	Division/Group			
ITSS	Ulysses Huerta	Air Operations Branch			
		Air Support Group Supervisor	Heather Wonenberg (t)		
		Air Tactical Group Supervisor			
		Helibase Manager			
<b>6. Logistics Section</b>			<b>8. Finance/Administration Section:</b>		
Chief	Mani Bouslaugh		Chief	Lee Piper	
Ordering Manager	Sara Felix		Time Unit	Ann Espinoza	
Base Camp Manager	Ray Herbert		Procurement Unit	Troy Boudro (t)	
FDUL	Le-Ann Lewis-Brander		Comp/Claims Unit	Matt Vierra	
GSUL	Lori Cayo		EGTR/PROC	Jody Gover / Raleigh Coppin	
Medical Unit	Mathew Vierra		EQTR	Eric Gregory	
Security	Churchman/Hauck/Schifert/Breese		PTRC	Cristina Matteson	
COMT	Ernesto Guijano/Lauren Fox-Humphreys (t)				
<b>Prepared By: Name:</b> Jeff Ferguson		<b>Position/Title:</b> PSC		<b>Signature:</b> _____	
ICS 203		<b>Date/Time:</b> 10/9/2023 2300 hours			

NIMS IAP



## 2023 SRF Lightning Complex Weather Transition Outlook



**FORECAST NO:** 54  
**PREDICTION FOR:** Tuesday – Saturday (10/10-10/15)  
**FORECAST ISSUED:** Monday, October 9, 2023

**INCIDENT:** 2023 SRF Lightning Complex  
**UNIT:** Six Rivers NF  
**SIGNED:** Chris Foltz *Chris Foltz*  
Incident Meteorologist (IMET)

\*\*\* FOR UP-TO-DATE INFORMATION, CONTACT NWS EUREKA, CA AT 707-442-2171 \*\*\*  
\*\*\* FOR SPOT FORECASTS, GO TO WEATHER.GOV/SPOT/REQUEST \*\*\*

**WEATHER DISCUSSION:** Another round of precipitation is expected on Tuesday with showers off and on through much of the day. Light precipitation lingers into early Wednesday before ending. No precipitation is expected Thursday but the weather pattern will support additional precipitation over the weekend. Below normal temperatures are expected Wednesday with a return to near normal temperatures Thursday and Friday.

### TUESDAY:

**WEATHER:** Mostly cloudy with periods of rain.

**MAX TEMP:** 44-65°      **MIN RH:** 65-80%

**CHC WTG RAIN (>0.10"): 100%**

**WINDS (20ft):** Valleys: SW 10-14 mph, gusts to 20 mph

**MIXING HEIGHT:** 1,900'

**MIN TEMP:** 40-46°

**MAX RH:** 85-100%

**EXPECTED PRECIP:** 0.50-1.50" – locally higher

**Mid-Slopes and Ridges:** SW 17-21 mph, gusts to 30 mph

**TRANSPORT WIND:** SW 23 mph

### WEDNESDAY:

**WEATHER:** Showers early becoming partly cloudy by afternoon.

**MAX TEMP:** 44-68°      **MIN RH:** 45-65%

**CHC WTG RAIN (>0.10"): 30%**

**WINDS (20ft):** Valleys: Terrain then NW 8-12 mph, gust 15

**MIXING HEIGHT:** 4,300'

**MIN TEMP:** 34-44°

**MAX RH:** 85-100%

**EXPECTED PRECIP:** T-0.10"

**Mid-Slopes and Ridges:** NW 9-13 mph, gusts to 18 mph

**TRANSPORT WIND:** N 9 mph

### THURSDAY:

**WEATHER:** Partly cloudy becoming mostly cloudy by afternoon. Warmer.

**MAX TEMP:** 58-80°      **MIN RH:** 30-45%

**CHC WTG RAIN (>0.10"): 0%**

**WINDS (20ft):** Valleys: Terrain then NE 7-11 mph, gust 14

**MIXING HEIGHT:** 2,300'

**MIN TEMP:** 41-49°

**MAX RH:** 70-90%

**EXPECTED PRECIP:** None

**Mid-Slopes and Ridges:** NE 8-12 mph, gusts to 16 mph

**TRANSPORT WIND:** NW 9 mph

**EXTENDED OUTLOOK (FRIDAY – SATURDAY):** An unsettled weather pattern will result in scattered showers Friday into Saturday. Wetting rains are possible. Temperatures during this period will remain near normal with valleys seeing highs in the 70s to lower 80s while mid-slope and ridge temperatures will remain in the 50s to lower 60s. Winds will be offshore/downslope overnight before becoming from the southwest each afternoon with gusts of 20 to 25 mph. Moderate to excellent overnight humidity recoveries are expected.

# SRF Lightning Complex General Weather Outlook

For Planning Purposes Only. See the IAP for the Official Forecast.

Forecast Made Monday Oct 09 2023 by IMET Chris Foltz



	Tue	Wed	Thu	Fri	Sat	Sun	Mon
<i>Condition</i>	<i>10-Oct</i>	<i>11-Oct</i>	<i>12-Oct</i>	<i>13-Oct</i>	<i>14-Oct</i>	<i>15-Oct</i>	<i>16-Oct</i>
Weather Highlights	<i>Showers Continuing</i>	<i>Showers Early</i>	<i>Partly Cloudy</i>	<i>Late Day Showers</i>	<i>Morning Showers</i>	<i>Isolated Showers</i>	<i>Scattered Showers</i>
Max Temp (F) @4,000'	48	52	62	61	56	61	60
Min Humidity (%)	75	66	42	48	60	60	65
AM RH Recovery (%)	95	85	70	54	75	70	77
Wind Direction/Speed	SW 18-22	NW 7-11	NW 6-10	NE->SW 8-12	SE->SW 11-15	SW 8-12	SW 12-16
Ridge Winds (MPH Gust)	29	15	14	18	20	16	23
Cloud Cover @ 1500	80	31	44	72	87	72	78
Chance of Rain (%)	100	30	0	20	40	30	50
Rain Amount (Inches)	0.50-1.00"	T-0.10"	0	T-0.10"	0.10-0.20"	0.10-0.20"	0.25-0.50"

KEY:	Moderate Burning Conditions	Elevated Burning Conditions			Critical Burning Conditions
Max Temp	<75	75	to	85	>85
Min Humidity	>25%	18	to	25	<18%
AM Humidity Recovery	>55%	36	to	55	<36%
Wind (Gust MPH)	< 10 MPH	10	to	25	> 25MPH
Clouds @ 1500	>25%	15	to	25	<15%

## FIRE BEHAVIOR FORECAST

<b>FORECAST NUMBER:</b> 53 - 57	<b>TYPE OF FIRE:</b> Wildfire
<b>FIRE NAME:</b> 2023 SRF Lightning Complex	<b>OPERATIONAL PERIOD:</b> 10/10/23 – 10/14/23
<b>DATE &amp; TIME ISSUED:</b> October 9, 2023	<b>TIME ISSUED:</b> 1800
<b>UNIT:</b> CA-SRF	<b>SIGNED:</b> /s/ Dan Ostmann, FBAN(t)

### INPUTS

**WEATHER SUMMARY:** \*\*\* See Fire Weather Forecast for Details (see previous page) \*\*\*

Recent perimeter growth:

Slate Creek RAWs (40330)	10 / 4	10 / 5	10 / 6	10 / 7	10 / 8
ERC	24	30	35	37	40
BI	33	35	39	46	48
1-hr FM @1300	10	9	8	9	8
10-hr FM @1300	14	10	9	10	11
100-hr FM @1300	18	16	13	12	12
1000-hr FM @1300	19	19	18	17	16
Daily Acres (complex-wide)	64	112	164	167	247

Forecast:

Slate Creek RAWs (40330):	10 / 10 (Tue)	10 / 11 (Wed)	10 / 12 (Thur)	10 / 13 (Fri)	10 / 14 (Sat)
ERC	18	16	20	25	23
BI	19	21	27	33	30
1-hr FM @1300	22	19	13	10	13
10-hr FM @1300	27	27	16	12	15
100-hr FM @1300	21	25	24	20	18
1000-hr FM @1300	16	17	18	19	19

Critical Thresholds: ERC >39, BI >29, 1000-hr FM <14%

Source: Slate Creek RAWs (040330), PSA (NC04), WIMS

### OUTPUTS

**GENERAL:**

Overall, fire behavior will be minimal. Heavy fuels like snags, logs, heavy duff, stumps, and roots will harbor heat until successive waves of precipitation occur and extinguish it. By Friday, several days after precipitation, fuels may be dry enough for heat holding over in heavy fuels to begin spreading again. However, alignment of wind and slope will be required for significant perimeter growth. There is a chance for another round of precipitation late in the week, which may preclude any additional fire spread.

**Projected Fire Behavior** (in unburned, available fuels, on 40% slope, burning uphill):

Fuel Type (40)	Max. Rate of Spread (ch/hr)	Max. Flame Length (ft)	Spotting Distance (mi)	Probability of Ignition (%)
Grass/Shrub (GS2)	0 - 18	0 - 4	Up to 0.3	Up to 29
Timber Understory (TU5)	0 - 8	0 - 7	Up to 0.3	Up to 29

**SPECIFIC FIRE BEHAVIOR: Tuesday – Saturday, October 10<sup>th</sup> – 14<sup>th</sup>, 2023**

**Pearch:** Anticipate minimal fire activity for several days. Expect some heat to hold over in heavy fuels in the upper portions of the *Monte Creek* drainage. Even without perimeter growth, heavy fuels may continue to burn out, which may cause debris to roll down steep slopes. Rollout of debris could continue to affect Hwy 96. By Friday, small-scale perimeter growth might occur in upper *Monte Creek*.

**Mosquito:** Anticipate minimal fire activity for several days. Expect some heat to hold over (smoldering in heavy fuels and possibly creeping in sheltered fuels) in the areas that showed activity most recently: on *Dillon Mountain*, near the 14N21 Rd, and in the *Lightning Ridge* area. By Friday, a small amount of perimeter growth may be possible in these areas. Expect primarily low-intensity, creeping fire behavior if surface spread initiates within the 5-day timeframe. An interior pocket of heat just north of the *East Fork of Bluff Creek* may also begin to spread within the forecast period.

**All Other Fires:** Expect minimal to no fire activity through the forecast period.

#### AIR OPERATIONS

Smoke is not expected to limit air operations in the next 5 days. However, low clouds or high winds may affect operations.

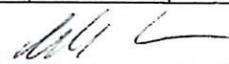
#### SAFETY

As fire activity winds down, do not let your guard down. Make sure your work area is assessed for fire-weakened trees and potential rolling hazards (such as rocks & logs) when doing repair work and patrolling.



# ASSIGNMENT LIST (ICS 204 WF)

CONTROLLED UNCLASSIFIED  
INFORMATION//BASIC

<b>1. Incident Name:</b> 2023 SRF Lightning Complex		<b>2. Operational Period:</b> Date From: 10/10/23    Date To: 10/15/23 Time From: 0700    Time To: 0700				<b>3. Branch</b> <b>GROUP</b>  <b>REPAIR</b>			
<b>4. Operations Personnel:</b>						Page 1 of 2			
Operations Section Chief: <b>Jake Akerberg / Derrick Branham (t)</b>		Night Ops:							
Branch Director:		Branch Safety:							
Division/Group Supervisor: <b>Josh Wright / Kevin Breitwieser (t)</b>		Air Attack:							
<b>5. Resources Assigned:</b>		<b>** Resources Below in Bold are 12 Hour **</b>							
Resource Identifier	ALS	LWD	Leader	Personnel	Request #	Hours	Reporting Location		
CR2I UKONOM		10/15	<b>Michael Peters</b>	18	<b>C-106</b>	0700 - 1900	ICP		
ENG3 TNF E342		10/17	<b>Francisco Navarro</b>	5	<b>E-546</b>	0700 - 1900	ICP		
ENG3 SHF E363		10/17	<b>Keith Smyth</b>	5	<b>E-548</b>	0700 - 1900	ICP		
ENG3 SHF E334		10/17	<b>Adam Dummer</b>	5	<b>E-550</b>	0700 - 1900	ICP		
ENG6 TMU 643		10/17	<del>Andrew Standridge</del>	4	<b>E-551</b>	0700 - 1900	ICP <b>John FREEMAN</b>		
DZR3 ANGELO CATTANEO		10/13	<b>Don George</b>	2	<b>E-359</b>	0700 - 1900	ICP		
DZR3 KIT CONTRACTING		10/22	<b>Shane Hullender</b>	2	<b>E-398</b>	0700 - 1900	ICP		
WTS2 CUTTING EDGE		10/16	<b>Ingo Middlebrook</b>	1	<b>E-341</b>	0700 - 1900	ICP		
WTS2 NORTHSTATE 267128		10/14	<b>Kimber Baker</b>	1	<b>E-464</b>	0700 - 1900	ICP		
FMOD NORTH ZONE 11-2		10/17	<b>Ben Wolf</b>	2	<b>O-565</b>	0700 - 1900	ICP		
FMOD GOD AND COUNTRY		10/18	<b>Joseph Johnson</b>	2	<b>O-566</b>	0700 - 1900	ICP		
EXC1 GEORGE WURLITZER		10/17	<b>Mike Gifford</b>	2	<b>E-537</b>	0700 - 1900	ICP		
EXC3 HOOPA FIRE		10/20	<b>Whits Marshall</b>	2	<b>E-285</b>	0700 - 1900	ICP		
CHP1 DAVIS CORP		10/18	<b>James Bovee</b>	2	<b>E-332</b>	0700 - 1900	ICP		
TFLD GOMEZ		10/22	<b>Ramon Gomez</b>	1	<b>O-1027</b>	0700 - 1900	ICP		
EMPF KLEIN		10/18	<b>Kevin Klein</b>	1	<b>O-1011</b>	0700 - 1900	ICP		
EMTF FARRER		10/19	<b>Jobee Farrer</b>	1	<b>O-1008</b>	0700 - 1900	ICP		
AMBU 5 WILDERNESS MEDICS	YES	10/12	<b>Mariah Estell</b>	2	<b>E-491</b>	0700 - 1900	ICP		
<b>6. Work Assignments:</b> Continue suppression repair with implemented repair plan									
<b>7. Special Instructions:</b> Do not utilize community hydrants unless there is fire impact to values at risk. Remove all miscellaneous flagging. Backhaul trash and excess supplies to ICP and update Field Maps for accountable property. All REMS and AMBULANCES are available to the incident as a whole.									
<b>8. Communications</b>									
Name	Ch	Function	Rx Freq	Rx Tone	Tx Freq	Tx Tone	Mode	Notes	
FOR RPT	1	COMMAND	172.3750		164.1750		A	T5 ORLEANS / T7 UKONOM	
NIFC T2 <i>Project</i>	<i>9.8</i>	TACTICAL	168.2000	(T7) 167.9	168.2000	(T7) 167.9	A		
<del>AG-43 <i>Comm</i></del>	<del>13.14</del>	<del>LOGALIA AVG</del>	<del>167.6000</del>		<del>167.6000</del>	<del>OST</del>		<b>SPE 205</b>	
CALCORD <i>AB</i>	<i>15</i>	TACTICAL	156.0750	(T6) 156.7	156.0750	(T6) 156.7	A		
AIRGUARD	16	AIRGUARD	168.6250	0.0	168.6250	(T1) 110.9	A		
<b>9. Prepared by: Name:</b>		Micah Carlson			RESL			Signature: 	
ICS 204		Date/Time: 10/9/2023 2200			Personnel Count: 58				

NIMS IAP

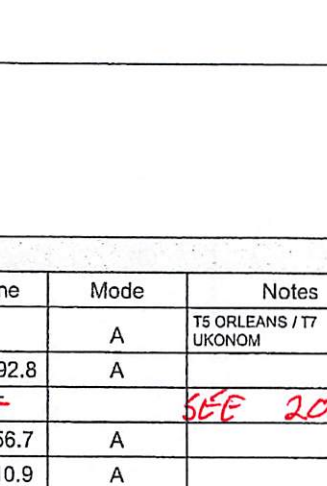
CONTROLLED UNCLASSIFIED INFORMATION//BASIC





# ASSIGNMENT LIST (ICS 204 WF)

CONTROLLED UNCLASSIFIED  
INFORMATION//BASIC

<b>1. Incident Name:</b> 2023 SRF Lightning Complex		<b>2. Operational Period:</b> Date From: 10/10/23    Date To: 10/15/23 Time From: 0700    Time To: 0700				<b>3. Branch</b> <b>GROUP</b>  <b>ROADS</b>		
<b>4. Operations Personnel:</b>						Page 1 of 2		
Operations Section Chief: <b>Jake Akerberg / Derrick Branham (t)</b>			Night Ops:					
Branch Director:			Branch Safety:					
Division/Group Supervisor: <b>Josh Wright / Matthew Stanford (t)</b>			Air Attack:					
<b>5. Resources Assigned:</b>		<b>** Resources Below in Bold are 12 Hour **</b>						
Resource Identifier	ALS	LWD	Leader	Personnel	Request #	Hours	Reporting Location	
CR2I FIRESTORM 5D		10/16	Mike Martin	20	C-107	0700 - 1900	ICP	
ENG6 HI COUNTRY		10/21	<b>23</b> Zach Mostad	3	E-96	0700 - 1900	ICP	
<del>ENG6 YUROK 9462</del>		10/23	Fermin Sanchez	5	E-564	0700 - 1900	ICP	
WTS2 LENAHAN		10/22	Jerrold Parrlott	1	E-293	0700 - 1900	ICP	
WTS2 TT CONSTRUCTION		10/13	Louis Mitchell Jr.	1	E-335	0700 - 1900	ICP	
WTS2 DARRAH LOGGING 2		10/18	Carl Brown	1	E-405	0700 - 1900	ICP	
WTS2 GRANITE COMMERCIAL		10/26	Jeff Blair	1	E-445	0700 - 1900	ICP	
FMOD NORTH ZONE 11-1		10/18	<b>17</b> Mike Lee	2	O-57	0700 - 1900	ICP	
EXC1 KDK GEN ENGINEERING		10/20	Mark Hawkins	2	E-437	0700 - 1900	ICP	
EXC2 LUKE ANDREWS		10/17	Luke Andrews	2	E-539	0700 - 1900	ICP	
EXC3 MOORE EXCAVATING		10/16	Dylan Moore	2	E-16	0700 - 1900	ICP	
GRD1 DUDLEY'S		10/19	John Stugelmeyer	2	E-555	0700 - 1900	ICP	
GRD2 R BROWN CONST.		10/18	<b>23</b> <del>John Marshall</del>	2	E-312	0700 - 1900	ICP <b>MIKE DIXON</b>	
MISC DUMP TR DEAN INNOV R1		10/19	Steve Carpentier	1	E-558	0700 - 1900	ICP	
MISC DUMP TR DEAN INNOV		10/19	Thomas Feldhake	1	E-559	0700 - 1900	ICP	
CHP2 CUT WRIGHT		10/17	Tim Wright	3	E-543	0700 - 1900	ICP	
BHOE AXSUS ENTERPRISES 560		10/21	Ty Baker	2	E-560	0700 - 1900	ICP	
BHOE AXSUS ENTERPRISES 561		10/23	Trebb Rainey	2	E-561	0700 - 1900	ICP	
<b>6. Work Assignments:</b> Continue road repair and suppression repair with implemented repair plan.								
<b>7. Special Instructions:</b> Do not utilize community hydrants unless there is fire impact to values at risk. Remove all miscellaneous flagging. Backhaul trash and excess supplies to ICP and update Field Maps for accountable property. All REMS and AMBULANCES are available to the incident as a whole.								
<b>8. Communications</b>								
Name	Ch	Function	Rx Freq	Rx Tone	Tx Freq	Tx Tone	Mode	Notes
FOR RPT	1	COMMAND	172.3750		164.1750		A	T5 ORLEANS / T7 UKONOM
CDF T3	7	TACTICAL	151.1750	(T16) 192.8	151.1750	(T16) 192.8	A	
<del>AG-43</del>	<del>14</del>	<del>LOCAL IA W/O</del>	<del>167.6000</del>		<del>167.6000</del>	<del>OST</del>		<b>SEE 205</b>
CALCORD	15	TACTICAL	156.0750	(T6) 156.7	156.0750	(T6) 156.7	A	
AIRGUARD	16	AIRGUARD	168.6250	0.0	168.6250	(T1) 110.9	A	
<b>9. Prepared by: Name:</b>		Micah Carlson		RESL		Signature: 		
ICS 204		Date/Time: 10/9/2023 2200		Personnel Count: 53				

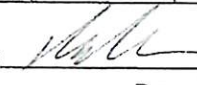
NIMS IAP

CONTROLLED UNCLASSIFIED INFORMATION//BASIC



# ASSIGNMENT LIST (ICS 204 WF)

CONTROLLED UNCLASSIFIED  
INFORMATION//BASIC

<b>1. Incident Name:</b>		<b>2. Operational Period:</b>		<b>3. Branch</b>		<b>GROUP</b>		
2023 SRF Lightning Complex		Date From: 10/10/23	Date To: 10/15/23	<b>ROADS</b>		Page 2 of 2		
		Time From: 0700	Time To: 0700					
<b>4. Operations Personnel:</b>								
Operations Section Chief: <b>Jake Akerberg / Derrick Branham (t)</b>				Night Ops:				
Branch Director:				Branch Safety:				
Division/Group Supervisor: <b>Josh Wright / Matthew Stanford (t)</b>				Air Attack:				
<b>5. Resources Assigned:</b>								
<b>** Resources Below in Bold are 12 Hour **</b>								
Resource Identifier	ALS	LWD	Leader	Personnel	Request #	Hours	Reporting Location	
BHOE AXSUS ENTERPRISES 562		10/21	Ashton Hall	2	E-562	0700 - 1900	ICP	
HEQB NELSON		10/14	Sam Nelson	1	O-999	0700 - 1900	ICP	
HEQB BAKER		10/17	Patrick Baker	1	O-1000	0700 - 1900	ICP	
HEQB BASSO (t)		10/14	Brian Basso	1	O-983	0700 - 1900	ICP	
HEQB SASSEN (t)		10/17	Tyler Sassen	1	O-1014	0700 - 1900	ICP	
HEQB MCVICKER (t)		10/18	Terrance Mcvicker	1	O-1015	0700 - 1900	ICP	
REMS 2 BLACKWOODS	YES	10/22	<del>Mark Swick</del>	<del>2</del> <b>4</b>	O-832	0700 - 1900	ICP <i>Chandler LEFMEYER</i>	
EMTF GONZALEZ		10/18	Carlos Gonzalez	1	O-1009	0700 - 1900	ICP	
AMBU 2 MTN MEDICS	YES	10/14	Dale Williams	2	E-29	0700 - 1900	ICP	
SOFR JOHNSON		10/14	Brent Johnson	1	O-875	0700 - 1900	ICP	
<b>6. Work Assignments:</b>								
Continue road repair and suppression repair with implemented repair plan.								
<b>7. Special Instructions:</b>								
Do not utilize community hydrants unless there is fire impact to values at risk.								
Remove all miscellaneous flagging.								
Backhaul trash and excess supplies to ICP and update Field Maps for accountable property.								
All REMS and AMBULANCES are available to the incident as a whole.								
<b>8. Communications</b>								
Name	Ch	Function	Rx Freq	Rx Tone	Tx Freq	Tx Tone	Mode	Notes
FOR RPT	1	COMMAND	172.3750		164.1750		A	T5 ORLEANS / T7 UKONOM
CDF T3	7	TACTICAL	151.1750	(T16) 192.8	151.1750	(T16) 192.8	A	
<del>AG-43</del>	<del>14</del>	<del>LOCAL IA A/G</del>	<del>167.6000</del>		<del>167.6000</del>	<del>OST</del>		<i>SEE 205</i>
CALCORD	15	TACTICAL	156.0750	(T6) 156.7	156.0750	(T6) 156.7	A	
AIRGUARD	16	AIRGUARD	168.6250	0.0	168.6250	(T1) 110.9	A	
<b>9. Prepared by: Name:</b>								
Micah Carlson			RESL					
						Signature: 		
<b>ICS 204</b>		Date/Time: 10/9/2023 2200			Personnel Count: 13			

NIMS IAP

CONTROLLED UNCLASSIFIED INFORMATION//BASIC

<b>AIR OPERATIONS SUMMARY 220</b>		Prepared By: Heather Wonenberg	Prepared: 10/09/2023	Prepared Time: 1500
<b>1. INCIDENT NAME: 2023 SRF LIGHTNING</b>	<b>2. OPERATIONAL PERIOD</b> 10/10/2023 – 10/14/2023	<b>START TIME:</b> 0700	<b>END TIME:</b> 1900	<b>SUNRISE:</b> 07:24
				<b>SUNSET:</b> 18:37

<p><b>3. REMARKS: (Safety Notes, Hazards, etc.)</b></p> <p>Aviation can always be delayed. Order aircraft early and always have a backup plan for emergencies.</p> <p style="text-align: center;">****Paramedic assigned to 74H****</p>	<p><b>4. READY ALERT AIRCRAFT:</b></p> <p>Medivac: <u>SEE MEDICAL PLAN</u> Short-haul (3SH) Scott Valley</p> <p style="text-align: center;">Scott Valley Helibase 8227 Island road Etna Ca 96027</p> <p>H3 (ICP) N 41 18.38 W 123 33.21</p>	<p><b>5. TFR:</b></p> <p>No TFR assigned to incident</p>
---	---	--

6. PERSONNEL	NAME	PHONE #	7. FREQUENCIES	AM	FM	8A. FIXED-WING
AOBD			FOREST RPT		Rx 172.3750 Tx 164.1750 Tone 5 Orleans Tone 7 Ukonom	AIRTANKERS- none assigned.
ASGS T	Heather Wonenbeg	209-347-7546	A/A		126.2750	8B. Aerial Supervision / Personnel / Location ATGS -none assigned.
74H Manager	Garrett Hires	760-310-7791				
74H Paramedic	Julian Krisey	707-330-1403	A/G CMD		167.8125	
			A/G TAC		171.0875	
Short-haul 3SH (Not assigned to SRF)			A/G 43 (IA primary)		167.6000	
Scott Valley HB (Not assigned to SRF)	Dakota Fulks	530-736-2863	A/G 8 (IA secondary)		166.8750	

**9. HELICOPTERS: (Order through ATGS or Operations)**

FAA N#	TY	MAKE/MODEL	BASE	START	AVAIL	REMARKS		TY	MAKE/MODEL	BASE	START	AVAIL	REMARKS
74H	3	Bell 407HP	ICP	0830	0900	Recon/ ALS Med ICP H3							

APPROVED BY /s/ Rocco Terracciano AOBD

<b>Incident:</b> <i>SRF LIGHTING COMPLEX</i>	<b>Date:</b> 10/10-15/23	<b>Operational Period:</b> ALL Shift
---	-----------------------------	---



## ***SAFETY MESSAGE***

*Fire fighter safety comes first on every fire, every time*

### **Transition Day: Go Slow to Go Fast**

Regardless of fire behavior or activities, transition is a likely time for things to slip through the cracks! Know who you are working for and establish good communication with them for accountability. If you don't know something, **ASK**. If you have helpful information pass it on. Remember that an obvious hazard to you may be unknown to others, unless **YOU** communicate it!!!

- There are new division supervisors, do you know who you are working for?
- Do you have an updated map?
- Do you know what command and tactical channels you are using?
- Do you know what to do in case of a medical emergency? (See the ICS 206)

### **Snags:**

- There are dead and fire weakened trees throughout the burn area. Maintain strong situational awareness for snag issues in your work area at all times. Ensure a good size up of the area and only mop-up to the extent needed to secure the line. Look up, look down, and around.
- Perform a risk assessment before working in snags and evaluate the risk vs. benefit.

### **Suppression Repair:**

- If you are working near heavy equipment, stay at least 100 feet in front and 50 feet behind all equipment. In timber, distances should be increased to 2.5 times the canopy height.
- Have good communication with operator.

### **Driving:**

- Highways are narrow and winding with steep drop offs. Dirt roads are slick with the current rain. They are steep with soft shoulders. The rain has caused rolling rocks to come onto the roadbed

## **THE TAKEAWAY MESSAGES HERE ARE ...**

*Know who you are working for, how to communicate to them and always maintain accountability. Communicate your concerns upward.*

Safety Officer: Rich Harnden SOFC



<b>INCIDENT RADIO COMMUNICATIONS PLAN (ICS 205)</b>	Incident Name <b>SRF LIGHTNING</b>	Date/Time Prepared <b>10/9/2023 1400</b>	Operational Period Date/Time <b>10/10/23 to 10/15/23 0700 to 0700</b>
---	---------------------------------------	---	--

**CONTROLLED CLASSIFIED INFORMATION/BASIC**

**Utilization of any frequency other than those listed on this form are prohibited, subject to fines by the FCC and demobilization from the incident.**

Zn Ch	Function	Channel Name/Trunked Radio System Talkgroup	Assignment	RX Freq N or W	RX Tone/NAC	TX Freq N or W	Tx Tone/NAC	Dev	Pwr	Mode A, D or M	Remarks
1	COMMAND	FOR RPT	ALL DIVS	172.3750	NONE	164.1750	OST	N	H	A	T5 ORLEANS / T7 UKONOM
2	COMMAND	ADM RPT		170.4750	NONE	165.7500	OST	N	H	A	T5 ORLEANS / T7 UKONOM
3	COMMAND	SERV RPT		169.9500	NONE	164.7875	OST	N	H	A	T5 ORLEANS
4	COMMAND	HIA RPT		155.3850	NONE	150.8050	OST	N	H	A	T6 HORSE RIDGE
5	COMMAND	HIA TAC2		154.3550	NONE	154.3550	OST	N	H	A	
6	COMMAND	HUU RPT		151.2500	NONE	159.4050	OST	N	H	A	T13 RED MOUNTAIN
7	TACTICAL	CDF T3	ROADS	151.1750	NONE	151.1750	OST	N	H	A	
8	TACTICAL	NIFC T2	ROADS	168.2000	NONE	168.2000	OST	N	H	A	
9	TACTICAL	R5 PROJ	REPAIR	168.6625	NONE	168.6625	OST	N	H	A	
10	TACTICAL	R5 T5	REPAIR	167.1125	NONE	167.1125	OST	N	H	A	
11	COMMAND	CNTY RPT		154.2500	NONE	156.1050	OST	N	H	A	
12	COMMAND	KNF RPT		171.5250	NONE	165.4125	OST	N	H	A	
13	Air-to-Ground	A/G CMD	ALL DIVS	167.8125	NONE	167.8125	OST	N	H	A	
14	Air-to-Ground	A/G 43	LOCAL IA A/G	167.6000	NONE	167.6000	OST	N	H	A	
15	Air-to-Ground	CALCORD	MEDICAL	156.0750	Tone 6 156.7	156.0750	Tone 6 156.7	N	H	A	
16	EMERGENCY	AIRGUARD	EMERGENCY	168.6250	NONE	168.6250	Tone 1 110.9	N	H	A	EMERGENCY ONLY

Prepared By (Communications Unit Leader)	Incident Location: ORLEANS	Forest / Unit / Jurisdiction: Six Rivers NF
North Coast Dispatch: 707-441-3644	County: Humboldt State: CA	Latitude: " N Longitude: W

# SRF Lightning Complex FINANCE PROCEDURES

Finance Email: [2023.lightningcomplex.finance@firenet.gov](mailto:2023.lightningcomplex.finance@firenet.gov)

Please submit your documents

## ELECTRONICALLY.

(If you are completing CTRs/Shift Tickets on paper, you can take a picture, save it as a PDF and then email it.)

ALL RESOURCES – When emailing, **please include your RO# in the subject line** and on all documents.

Provide a contact phone number in your email.

For easy document submission, scan the QR codes.



At **check-in** submit the following:

- Resource Order
- Manifest/Roster
- Cooperator agreement or contract (*w/ correct resource highlighted*)
- AD Casual Hire Form
- Vehicle Inspection Form

Daily submit the following:

- CTRs
- Shift Tickets

*Ensure all CTR/Shift Tickets are signed and dated.*

*Contracted Resources: Please ensure daily hours worked do NOT exceed operational period without including written justification and supervisor's approval.*

Recommended Naming of files:

- CTR\_O99\_231005 (for CTR RO#O99 dated 10/05/23)
- ST\_E99\_230930\_1001 (for Shift Ticket E-99 dated 9/30/23-10/01/23)

Demobing soon? We will need the below documents to process your OF-288/286.

At **DEMOB** submit the following:

- Final CTR/Shift Tickets w/ projected travel home
- Release Vehicle Inspection Form

If you have information to pass on to the timekeepers regarding your time, please use the remarks block of your CTR or Shift ticket. If you put it in the body of the email, there is a chance we may miss it. You are also welcome to stop by Finance and talk with us!



**We want your photos** - Email them to [2023.lightningcomplex@firenet.gov](mailto:2023.lightningcomplex@firenet.gov) or drop them off at the PIO trailer.

**We Have a Lost and Found** - Drop off or pick-up at the PIO trailer.

**Mail Delivery** - All mail delivery services are at ICP in Orleans and available for pick up at the PIO trailer. For all mail, please include the incident name and your resource order number.

SRF Lightning Complex (Insert your name and RO number) P.O. Box 410 Orleans, Ca 955556	SRF Lightning Complex (Insert your name and RO number) 1 ichi Pishi Rd Orleans, Ca 955556
USPS Delivery	UPS/Fed Ex Delivery

**When the public wants fire information, direct them to these official sources.**

**Public Information Phone:** (530) 618-3339

**Facebook:** [www.facebook.com/2023SRFRedwoodLightning](https://www.facebook.com/2023SRFRedwoodLightning)

**Inciweb:** <https://inciweb.nwcg.gov/incident-information/casrf-2023-srf-lightning-complex-and-redwood-lightning-complex>.

## HUMAN RESOURCE MESSAGE

I've Learned....

I've learned....

That just one person saying to me, "You've made my day!"  
MAKES MY DAY.

I've learned....

That no matter how serious your life requires you to be, everyone needs a friend to act  
goofy with.

I've learned....

That it's those small daily happenings that make life so spectacular.

I've learned....

That under everyone's hard shell is someone who wants to be appreciated and loved.

I've learned....

That to ignore the facts does not change the facts.

I've learned....

That everyone you meet deserves to be greeted with a smile.

I've learned....

That one should keep their words both soft and tender, because tomorrow they may have  
to eat them.

I've learned....

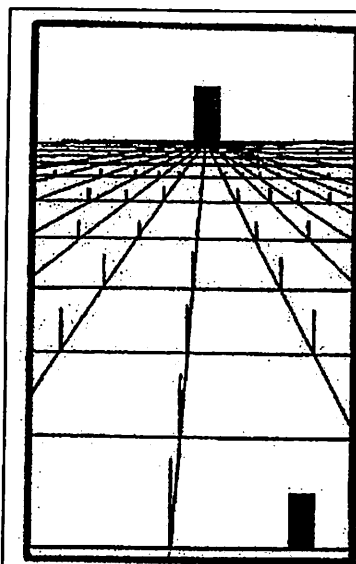
That a smile is an inexpensive way to improve your looks.

I've learned....

That I can't choose how I feel, but I can choose what I can do about it.

I've learned....

That it is best to give advice in only two circumstances; when it is requested and when it  
is a life threatening situation.



Which rectangle is bigger?

I've learned...that when it comes to optical  
illusions, the answer is always the simplest one.

They are the same size.

Human Resource Specialist:  
Karen Hartman

Keep up the good work!





# **Training Specialist**

## **2023 SRF Lightning Complex**

**The Training Specialist is working remotely. Training Specialist contact information for the 2023 SRF Lightning Complex:**

- Robert Rivelle
- Important: If any Trainee or Trainer has any questions or concerns, call/text: 707.498.1761 “anytime”.
- Email: robert\_rivelle@nps.gov

### **How to register as a Trainee:**

1. Use the QR code below or on the front of the IAP to register. If you're unable to register using the QR code, please call 707.498.1761.
2. Once registered, you will receive text and email updates.

### **How to close-out your training assignment:**

1. **Trainer and Trainee:** Have a conversation, open dialog between both.
2. **Trainer:** Complete an Evaluation Record in the back of the Position Task Book and make as many entries as possible within the individual tasks. Discuss this with your Trainee.
3. **Trainer:** Complete an individual performance rating (ICS 225) and go over the performance rating with your Trainee.
4. **Trainee:** Text a photo or email your individual performance rating (ICS 225) to the Training Specialist.
5. **Trainee:** Complete the Trainee exit questions at the QR code below.
6. **Trainee:** Once 1-4 are completed, the Trainee and the Training Specialist will have a brief conversation to discuss the Task Book and assignment with the Trainee.
7. **Done,** except for safe travels home!

#### **Trainee Registration**



#### **Trainee Exit Questions**



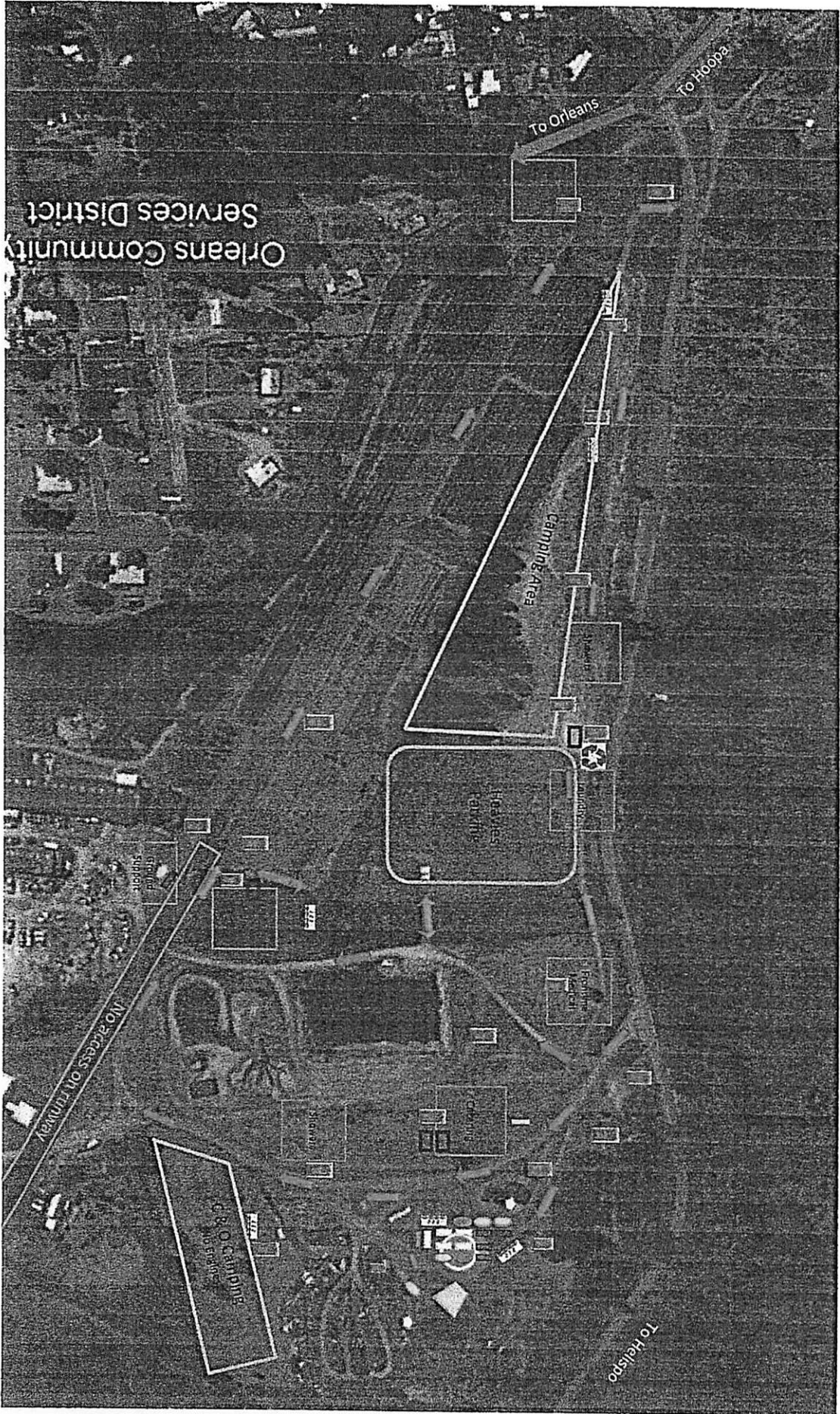
# 2023 SRF LIGHTNING COMPLEX US-CA-SRF-000986

## TENTATIVE RELEASE

10/10/2023

### OVERHEAD

O-911	0715	(FEMO)	BUNIS-HAINES, LILY ANN
O-946	0720	(SEC1)	BURNS, JOSEPH DUNCAN
O-1001	0725	(PIOF)	THOMAS, CHRISTOPHER A
O-936	0730	(BCMG)	CRAVEN, BRAD
O-896	0735	(RADO)	LACHENMYER, WILLIAM
O-909	0740	(THSP)	FLAHERTY, LANNY M
O-910	0745	(FEMO)	BIGGS, MATTHEW LEE
O-901	0750	(IMET)	FOLTZ, CHRIS
O-970	0805	(SECM)	TINGUE, SHARON ASHLEY
O-977	0810	(PIO3)	VAN SCHAIK, NATHANIEL THOMAS
O-884	0815	(SOFR)	QUIGLEY, TIM
O-930	0820	(CULS)	YAMAMOTO, SILAS KELSEY
O-956	0825	(FEMO)	WARD, MEGAN SHEA
O-968	0830	(SEC2)	DAVIS, WESTON SHAW
O-919	0835	(SECM)	CLARK, DAVID T
O-995	0840	(PIOF)	WRIGHT, CARY EDWARD
O-998	845	(PIOF)	WIGGINS, MATTHEW T
O-973	850	(COMT)	TILLBROOK, KENNETH











**In Camp Medical Emergency**

**Call 24-hour MEDL**

**925-324-9776**

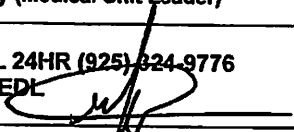
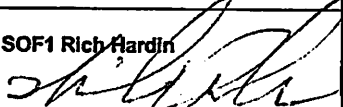
**Or go to directly to the**

**Ambulance**

**Or**

**MEDL**

**Medical Personnel tents are identified with  
signs and glow sticks**

1. Incident Name				2. Operational Period				
<b>2023 SRF LIGHTNING COMPLEX</b>				Date/Time: <b>10/10/2023 0700- 10/15/2023-0700</b>				
<b>3. Medical Aid Stations / Ambulance Services</b>								
Name	Location		Frequency		Advanced Life Support (ALS)			
Frontline Medical Trailer	ORLEANS ICP		Walk-In		Yes	No		
<b>INCIDENT AMBULANCES</b>								
AMBO-5 Wilderness Medics	SUPPRESSION REPAIR		Command		X			
AMBO-2 Mountain Medics	ROAD REPAIR		Command		X			
<b>LOCAL AMBULANCE</b>								
Hoopa Ambulance	ALS Intercept for HWY 96/196. DP 5		911 or 530-625-4180		X			
<b>4. Air Rescue / Air Ambulance Services</b>								
Name	Location		Aircraft & Capability		911			
Reach Air Medical 5	Redding		ALS		911			
CHP H-14/ H15	Redding		ALS/ Hoist		911			
74H	ICP/H3		ALS		Command			
North Coast Dispatch Air Desk					(707) 441-3658			
<b>5. Hospitals (all times estimated from incident location)</b>								
Name & Level	GPS Datum – (NAD 83) Degrees Decimal Minutes		Travel Time (From ICP)		Phone	Helipad		Address
	Lat:	Long:	Air	Grnd		Yes	No	
Mad River Community Hosp (Level 4)	N 40° 53.72'	W 124° 05.45'	30 MINS	2 HR	(707) 826-8264	X		3800 Janes Rd Arcata, CA
St. Joseph Hosp (Level 3 Antivenom)	N 40° 22.10'	W 121° 41.40'	35 MINS	2 HR 15 MIN	(707) 269-4250	X		2700 Dolbeer St Eureka, CA
Mercy Medical Center (Level 2)	N 40° 34.33'	W 122° 23.80'	50 MINS	3 HR 15 MIN	(775) 982-2005	X		2175 Rosaline Ave Redding, CA
U.C. Davis Medical Center (Level 1 Trauma / Burn)	N 38° 33.28'	W 121° 27.35'	2 HR	5 HRS	(916) 734-5669 ED (916) 734-3544 Rcrd	X		2315 Stockton Blvd. Sacramento, CA
<b>6. Division / Crew Emergency Pre-Plan</b>								
<i>Update and discuss with assigned resources daily.</i>								
Fireline EMT / Medic's Division / Branch Location								
Air Hoist site location site: Lat: / Long: / Elevation:								
Helispot: Lat: / Long: / Elevation: MED LZ:								
<b>7. Prepared By (Medical Unit Leader)</b>			<b>8. Date/Time</b>		<b>9. Reviewed By (Safety Officer)</b>		<b>10. Date/Time</b>	
On Call MEDL 24HR (925) 924-9776 Matt Vierra MEDL 			10/09/2023 1600		SOF1 Rich Hardin 		10/09/2023 1600	

**Medical Incident Report**

**FOR A NON-EMERGENCY INCIDENT: WORK THROUGH CHAIN OF COMMAND TO REPORT AND TRANSPORT INJURED PERSONNEL AS NECESSARY.**

**FOR A MEDICAL EMERGENCY: IDENTIFY ON SCENE INCIDENT COMMANDER BY NAME AND POSITION AND ANNOUNCE "MEDICAL EMERGENCY" TO INITIATE RESPONSE FROM COMMUNICATIONS**

**Use the following items to communicate situation to communications/dispatch.**

**1. CONTACT COMMUNICATIONS / DISPATCH** (Verify correct frequency prior to starting report)  
*Ex: "Communications, Div. Alpha. Stand-by for Emergency Traffic."*

**2. INCIDENT STATUS:** *Provide incident summary (including number of patients) and command structure.*  
*Ex: "Communications, I have a Red priority patient, unconscious, struck by a falling tree. Requesting air ambulance to Forest Road 1 at (Lat./Long.) This will be the Trout Meadow Medical Incident, IC is TFLD Jones. EMT Smith is providing medical care."*

Severity of Emergency / Transport Priority	<input type="checkbox"/> <b>RED / PRIORITY 1</b> Life or limb threatening injury or illness. Evacuation need is <b>IMMEDIATE</b> <i>Ex: Unconscious, difficulty breathing, bleeding severely, 2<sup>o</sup> - 3<sup>o</sup> burns more than 4 palm sizes, heat stroke, disoriented.</i>	
	<input type="checkbox"/> <b>YELLOW / PRIORITY 2</b> Serious injury or illness. Evacuation may be <b>DELAYED</b> if necessary. <i>Ex: Significant trauma, unable to walk, 2<sup>o</sup> - 3<sup>o</sup> burns not more than 1-3 palm sizes.</i>	
		<input type="checkbox"/> <b>GREEN / PRIORITY 3</b> Minor injury or illness. <b>Non-Emergency</b> transport <i>Ex: Sprains, strains, minor heat-related illness.</i>
Nature of Injury or Illness & Mechanism of Injury		Brief Summary of Injury or Illness <i>(Ex: Unconscious, Struck by Falling Tree)</i>
Transport Request		Air Ambulance / Short Haul/Hoist Ground Ambulance / Other
Patient Location		Descriptive Location & Lat. / Long. (WGS84)
Incident Name		Geographic Name + "Medical" <i>(Ex: Trout Meadow Medical)</i>
On-Scene Incident Commander		Name of on-scene IC of Incident within an Incident <i>(Ex: TFLD Jones)</i>
Crew Patient Care		Name of Care Provider <i>(Ex: EMT Smith)</i>

**3. INITIAL PATIENT ASSESSMENT:** *Complete this section for each patient as applicable (start with the most severe patient)*

Patient Assessment: <i>(IRPG PAGE 106)</i>	Age:	Weight:	Chief Complaint:
Skin Signs: (color/moisture/temp)	Level of Consciousness:	BP:	HR:      Respirations:
Treatment:			

**4. TRANSPORT PLAN:**

Evacuation Location <i>(drop point, intersection, helispot, Lat. / Long, hazards)</i>	Patient's ETA to Location:
---	----------------------------

**5. ADDITIONAL RESOURCES / EQUIPMENT NEEDS:**

*Paramedic / EMT - Crews - Immobilization Devices - AED - Oxygen - Trauma Bag - IV/Fluid(s) - Splints - Rope rescue - Wheeled litter - HAZMAT - Extrication*

**6. COMMUNICATIONS:** *Identify State Air/Ground EMS Frequencies and Hospital Contacts as applicable*

Function	Channel Name/Number	Receive (RX)	Tone/NAC *	Transmit (TX)	Tone/NAC *
COMMAND					
AIR-TO-GRND					
TACTICAL					

**7. CONTINGENCY:** *Considerations: If primary options fail, what actions can be implemented in conjunction with primary evacuation method? Be thinking ahead.*

**8. ADDITIONAL INFORMATION:** *Updates/Changes, etc.*

**REMEMBER:**      **Confirm ETA's of resources ordered. Act according to your level of training.**

**Be Alert - Keep Calm - Think Clearly - Act Decisively**  
**\*\*\* Follow up with MEDL upon return to ICP \*\*\***