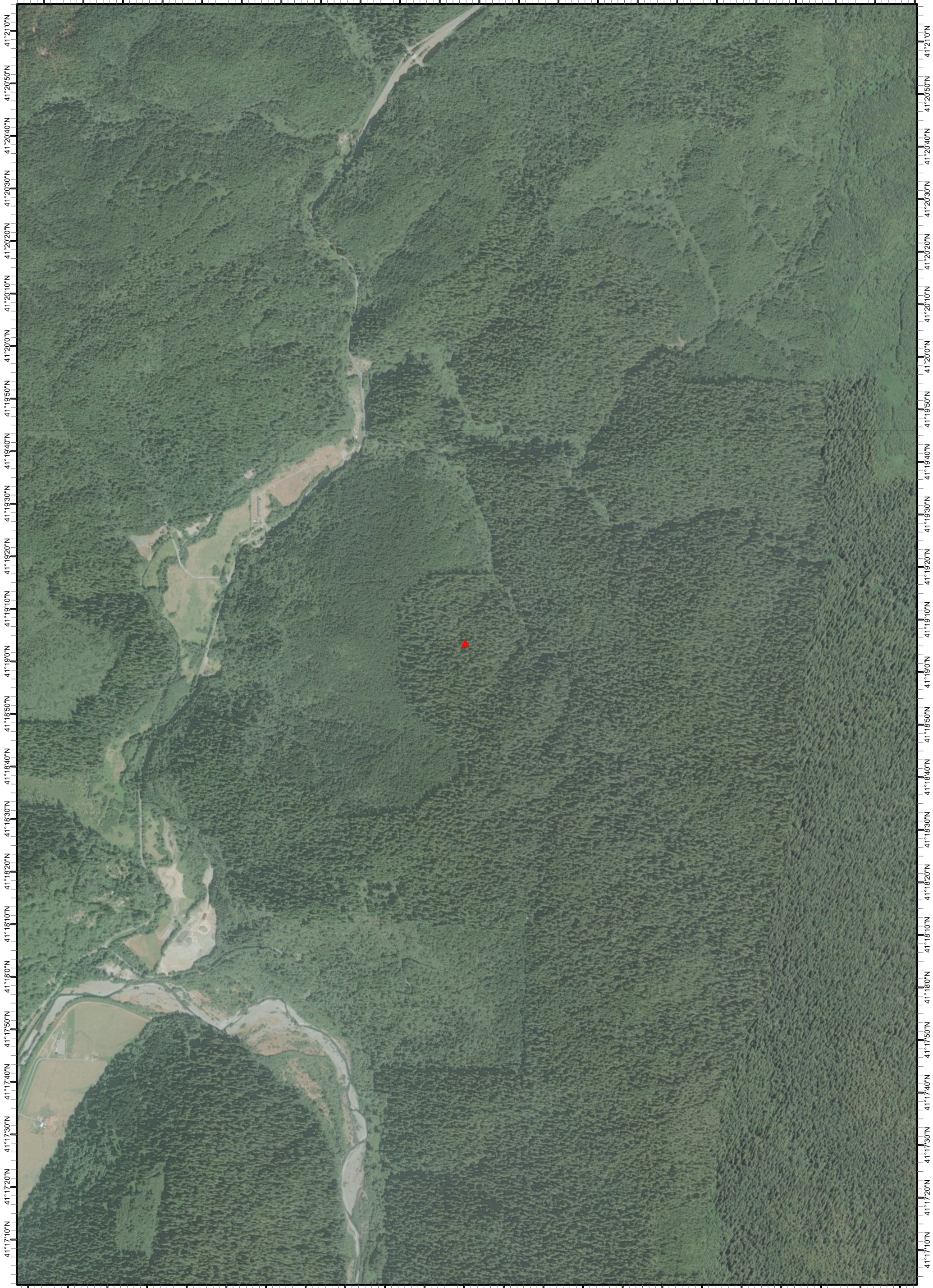


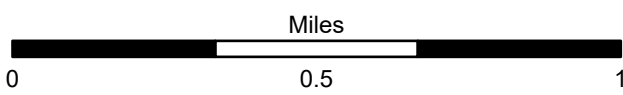
124°3'10"W 124°3'0"W 124°2'50"W 124°2'40"W 124°2'30"W 124°2'20"W 124°2'10"W 124°2'0"W 124°1'50"W 124°1'40"W 124°1'30"W 124°1'20"W 124°1'10"W 124°1'0"W 124°0'50"W 124°0'40"W 124°0'30"W 124°0'20"W 124°0'10"W 124°0'0"W 123°59'50"W 123°59'30"W



124°3'10"W 124°3'0"W 124°2'50"W 124°2'40"W 124°2'30"W 124°2'20"W 124°2'10"W 124°2'0"W 124°1'50"W 124°1'40"W 124°1'30"W 124°1'20"W 124°1'10"W 124°1'0"W 124°0'50"W 124°0'40"W 124°0'30"W 124°0'20"W 124°0'10"W 124°0'0"W 123°59'50"W 123°59'30"W

Glen
CA-SRF-000986
Infrared Heat Sources
08/24/2023 22:55hrs PDT
0 Interpreted Acres

- IR Isolated Heat Source
- ▭ IR Heat Perimeter
- ▭ IR Scattered Heat
- ▨ IR Intense Heat



Print Date: 08/24/2023
IRIN: Frazer

