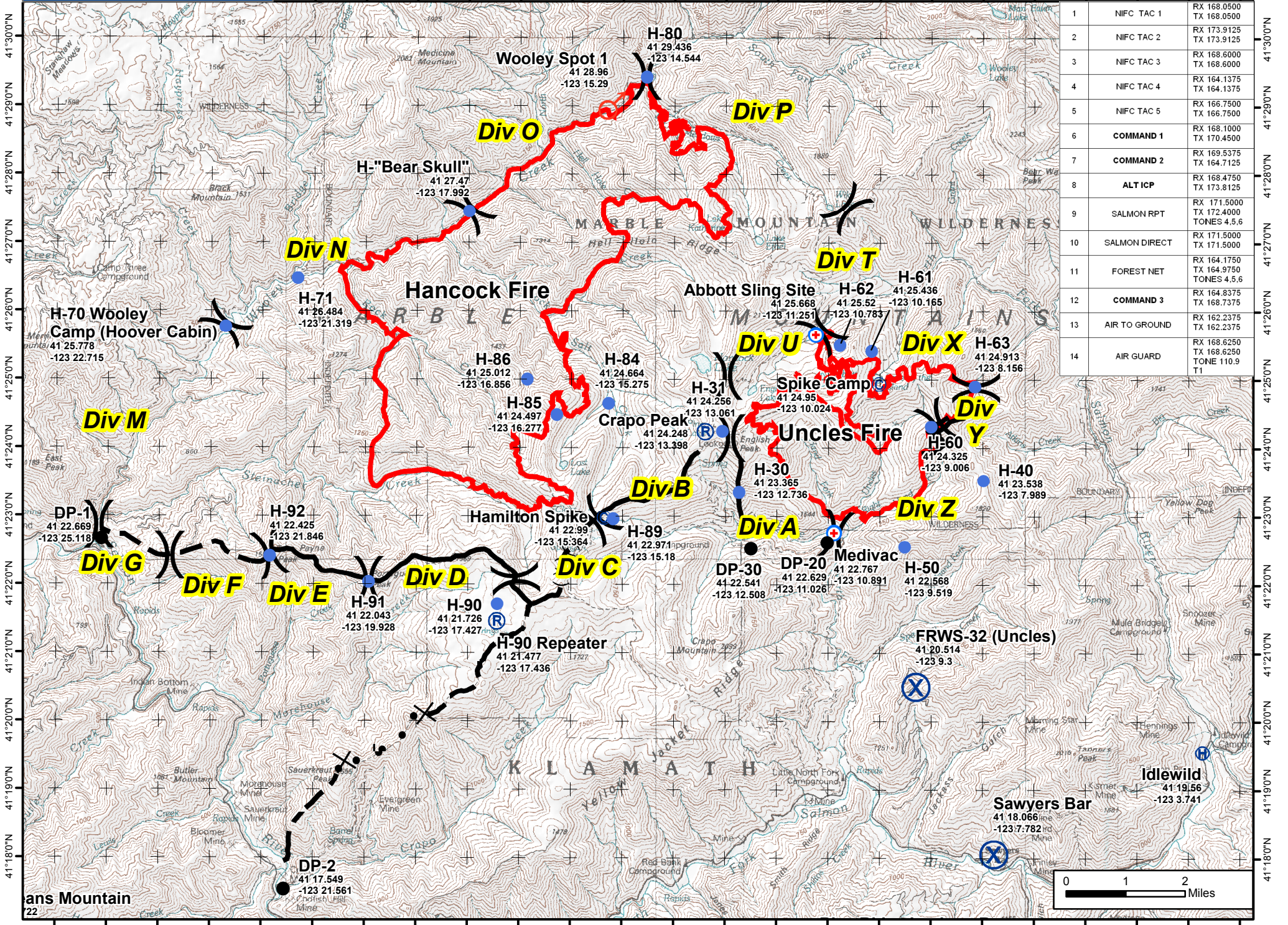


Pilot Map

Uncles Complex

September 10, 2006

123°20'0"W 123°18'0"W 123°16'0"W 123°14'0"W 123°12'0"W 123°10'0"W 123°8'0"W 123°6'0"W 123°4'0"W



1	NIFC TAC 1	RX 168.0500 TX 168.0500
2	NIFC TAC 2	RX 173.9125 TX 173.9125
3	NIFC TAC 3	RX 168.6000 TX 168.6000
4	NIFC TAC 4	RX 164.1375 TX 164.1375
5	NIFC TAC 5	RX 166.7500 TX 166.7500
6	COMMAND 1	RX 168.1000 TX 170.4500
7	COMMAND 2	RX 169.5375 TX 164.7125
8	ALT ICP	RX 168.4750 TX 173.8125
9	SALMON RPT	RX 171.5000 TX 172.4000 TONES 4.5.6
10	SALMON DIRECT	RX 171.5000 TX 171.5000
11	FOREST NET	RX 164.1750 TX 164.9750 TONES 4.5.6
12	COMMAND 3	RX 164.8375 TX 168.7375
13	AIR TO GROUND	RX 162.2375 TX 162.2375
14	AIR GUARD	RX 168.6250 TX 168.6250 TONE 110.9

