

Uncles Complex

Field Map - Overview

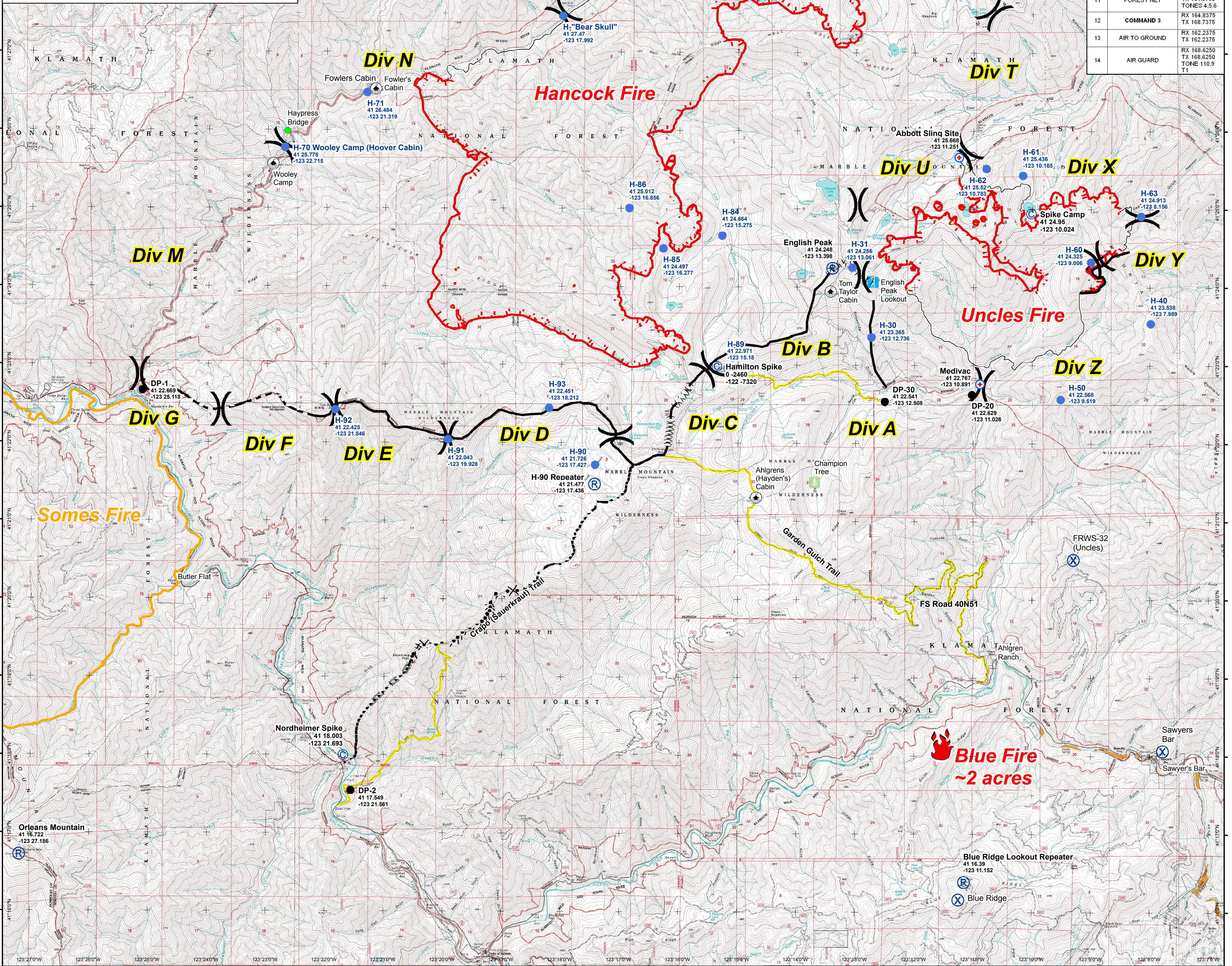
September 12, 2006

- Uncontrolled Fire Edge
- Completed Line
- Hand Line
- Completed Dozer Line
- Proposed Hand Line
- Proposed Dozer Line
- Ridge / Geographic Feature
- Fire Location
- Camp
- Drop Point
- Spot Fire
- Helibase
- Helispot
- MediVac Site
- Mobile Weather Unit
- Repeater
- Bridges
- Cabins/Ranches
- Champion Tree
- English Peak Lookout
- Mule Bridge Corrals
- Division
- Travel Route
- IR Heat Intensity

Perimeter as of 9/11/2006 1700. Map created by AF 9/11/06 2300.

Scale: 1:54,000

Miles: 0, 1, 2, 3



| | | |
|----|---------------|---|
| 1 | NIFC TAC 1 | RX 168.0500 TX 168.0500 |
| 2 | NIFC TAC 2 | RX 173.9125 TX 173.9125 |
| 3 | NIFC TAC 3 | RX 168.6000 TX 168.6000 |
| 4 | NIFC TAC 4 | RX 164.1375 TX 164.1375 |
| 5 | NIFC TAC 5 | RX 166.7500 TX 166.7500 |
| 6 | COMMAND 1 | RX 168.1000 TX 170.4500 |
| 7 | COMMAND 2 | RX 169.5375 TX 164.7125 |
| 8 | ALT ICP | RX 168.4750 TX 173.8125 |
| 9 | SALMON RPT | RX 171.5000 TX 172.4000 TONES 4.5.6 |
| 10 | SALMON DIRECT | RX 171.5000 TX 171.5000 |
| 11 | FOREST NET | RX 164.1750 TX 164.9750 TONES 4.5.6 |
| 12 | COMMAND 3 | RX 164.8375 TX 168.7375 |
| 13 | AIR TO GROUND | RX 162.2375 TX 162.2375 |
| 14 | AIR GUARD | RX 168.6250 TX 168.6250 TONE 110.9 |